

Data Path : Z:\VOASRV\HPCHEM1\MSVOA N\DATA\VN081018\
 Data File : VN050549.D
 Acq On : 11 Aug 2018 4:59
 Operator : MD\SY
 Sample : J4272-14
 Misc : 5.00mL/MSVOA N/WATER
 ALS Vial : 46 Sample Multiplier: 1

Instrument :
 MSVOA_N
 ClientSampleId :
 JC-03-080918-G

Quant Time: Aug 11 06:46:07 2018
 Quant Method : Z:\VOASRV\HPCHEM1\MSVOA_N\METHODS\82N080618W.M
 Quant Title : SW846 8260
 QLast Update : Tue Aug 07 05:22:15 2018
 Response via : Initial Calibration

Internal Standards	R.T.	QIon	Response	Conc	Units	Dev(Min)
1) Pentafluorobenzene	7.67	168	594139	50.00	ug/l	0.00
34) 1,4-Difluorobenzene	8.59	114	984584	50.00	ug/l	0.00
63) Chlorobenzene-d5	11.41	117	858689	50.00	ug/l	0.00
72) 1,4-Dichlorobenzene-d4	13.35	152	323855	50.00	ug/l	0.00

System Monitoring Compounds

33) 1,2-Dichloroethane-d4	8.03	65	413764	52.12	ug/l	0.00
Spiked Amount				50.000		
			Recovery	=	104.24%	
35) Dibromofluoromethane	7.59	113	381870	48.34	ug/l	0.00
Spiked Amount				50.000		
			Recovery	=	96.68%	
50) Toluene-d8	10.09	98	1360134	45.79	ug/l	0.00
Spiked Amount				50.000		
			Recovery	=	91.58%	
62) 4-Bromofluorobenzene	12.40	95	384052	37.94	ug/l	0.00
Spiked Amount				50.000		
			Recovery	=	75.88%	

Target Compounds

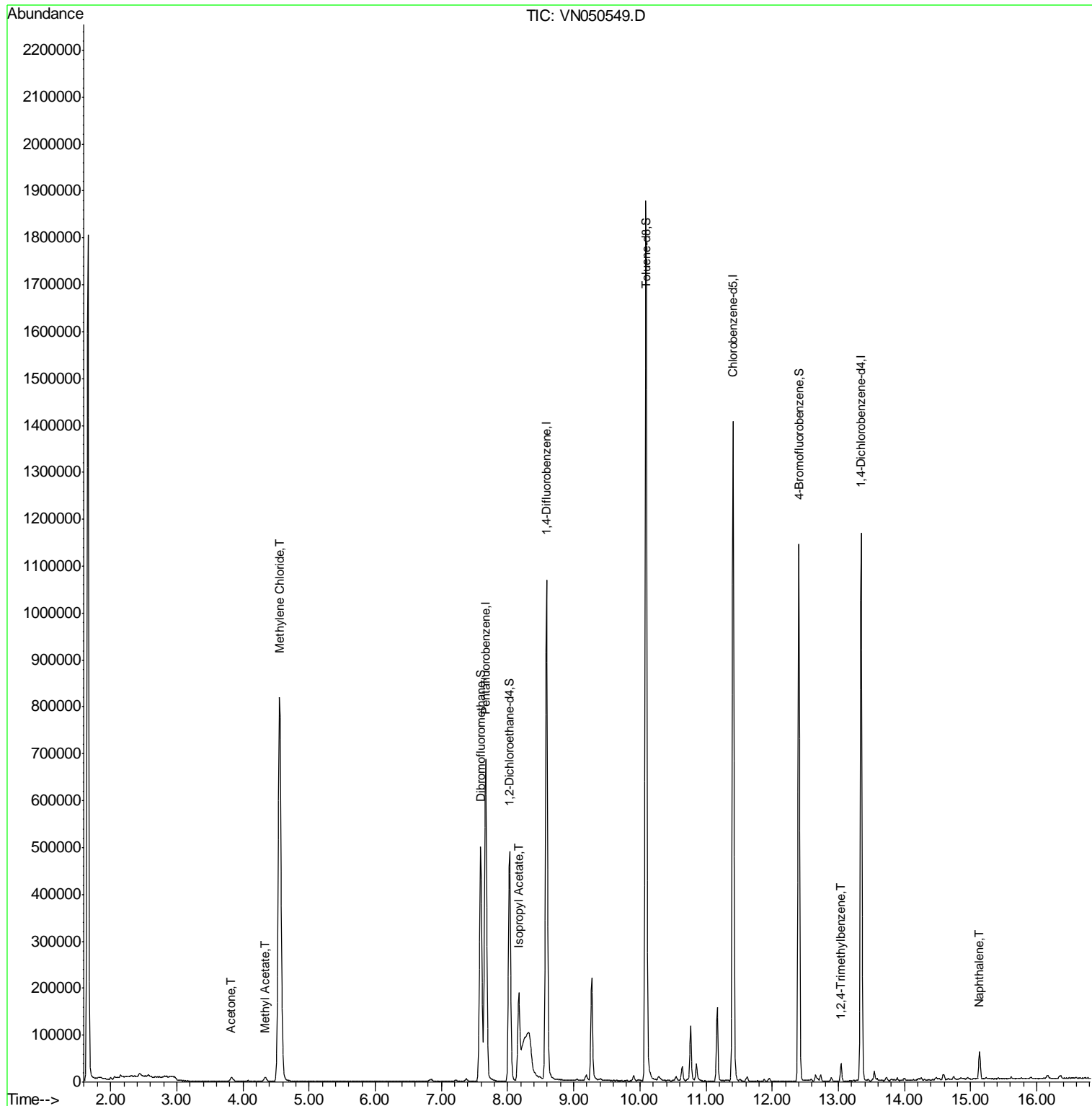
						Qvalue
16) Acetone	3.82	43	16009	6.41	ug/l	92
18) Methyl Acetate	4.34	43	16739	2.54	ug/l #	78
20) Methylene Chloride	4.55	84	649052	90.92	ug/l	99
43) Isopropyl Acetate	8.17	43	225383	16.76	ug/l	97
84) 1,2,4-Trimethylbenzene	13.04	105	20729	1.04	ug/l	97
95) Naphthalene	15.13	128	50559	6.61	ug/l	98

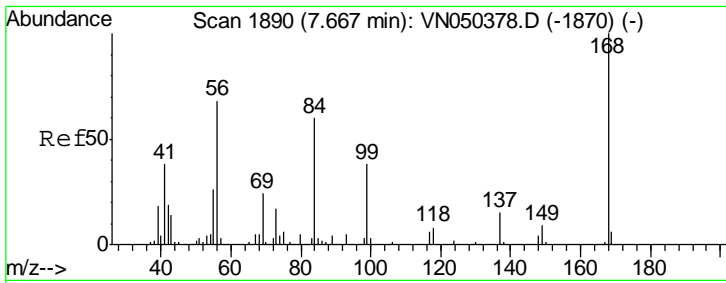
(#) = qualifier out of range (m) = manual integration (+) = signals summed

Data Path : Z:\VOASRV\HPCHEM1\MSVOA N\DATA\VN081018\
 Data File : VN050549.D
 Acq On : 11 Aug 2018 4:59
 Operator : MD\SY
 Sample : J4272-14
 Misc : 5.00mL/MSVOA N/WATER
 ALS Vial : 46 Sample Multiplier: 1

Instrument :
 MSVOA_N
 ClientSampleId :
 JC-03-080918-G

Quant Time: Aug 11 06:46:07 2018
 Quant Method : Z:\VOASRV\HPCHEM1\MSVOA_N\METHODS\82N080618W.M
 Quant Title : SW846 8260
 QLast Update : Tue Aug 07 05:22:15 2018
 Response via : Initial Calibration

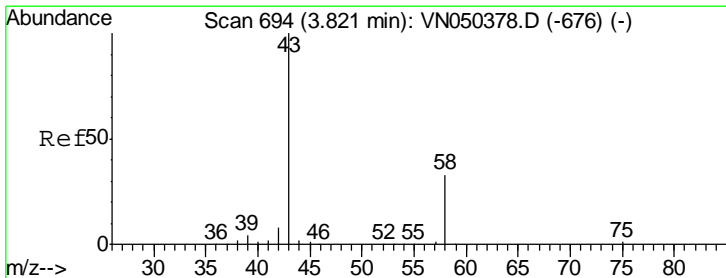
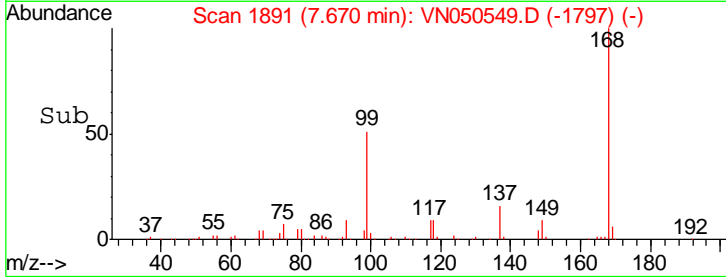
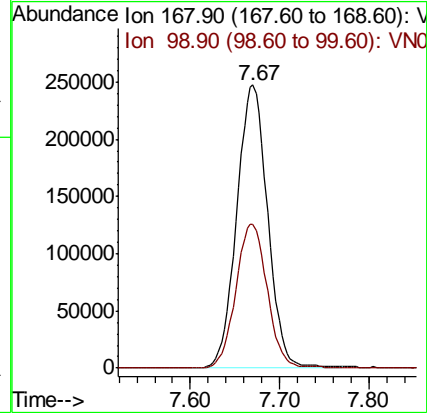
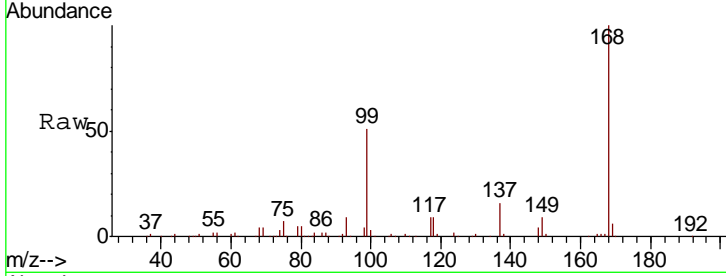




#1
 Pentafluorobenzene
 Concen: 50.00 ug/l
 RT: 7.67 min Scan# 1891
 Delta R.T. 0.00 min
 Lab File: VN050549.D
 Acq: 11 Aug 2018 4:59

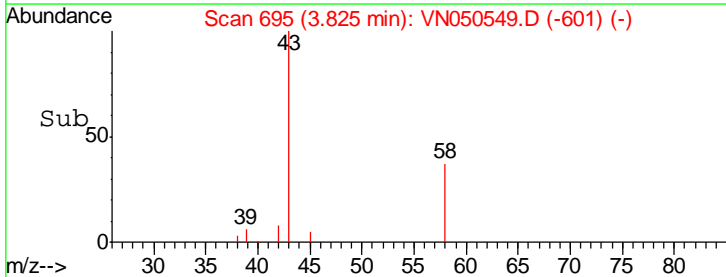
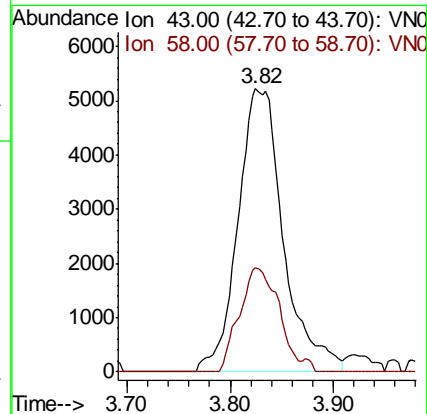
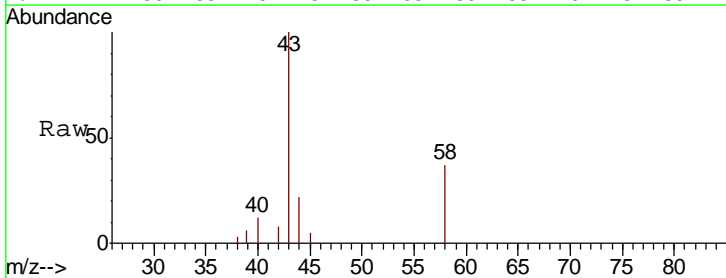
Instrument :
 MSVOA_N
 ClientSampled :
 JC-03-080918-G

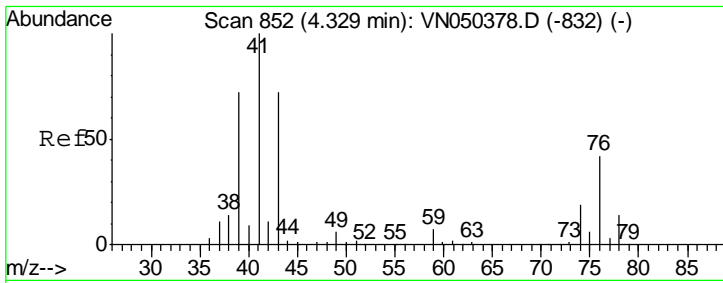
Tot Ion: 168 Resp: 594139
 Ion Ratio Lower Upper
 168 100
 99 50.8 40.0 60.0



#16
 Acetone
 Concen: 6.41 ug/l
 RT: 3.82 min Scan# 695
 Delta R.T. 0.00 min
 Lab File: VN050549.D
 Acq: 11 Aug 2018 4:59

Tgt Ion: 43 Resp: 16009
 Ion Ratio Lower Upper
 43 100
 58 36.9 25.8 38.8

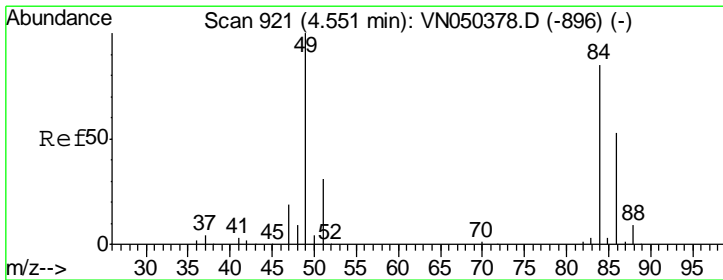
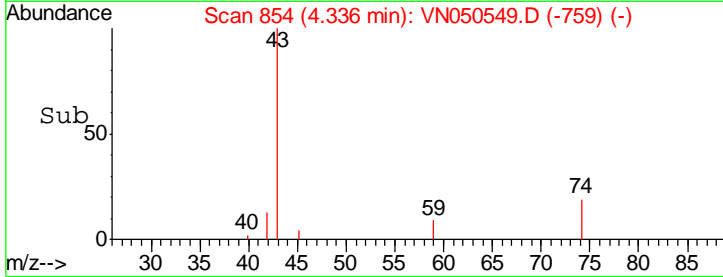
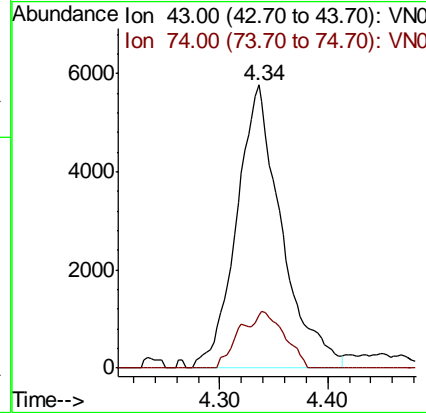
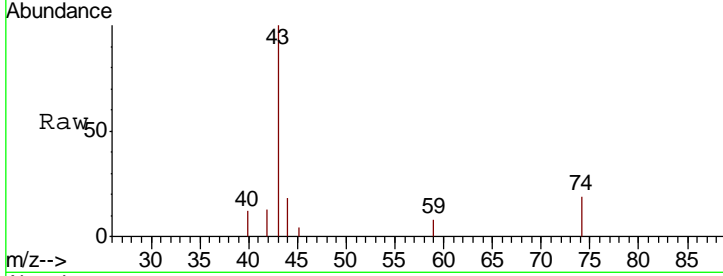




#18
 Methyl Acetate
 Concen: 2.54 ug/l
 RT: 4.34 min Scan# 854
 Delta R.T. 0.01 min
 Lab File: VN050549.D
 Acq: 11 Aug 2018 4:59

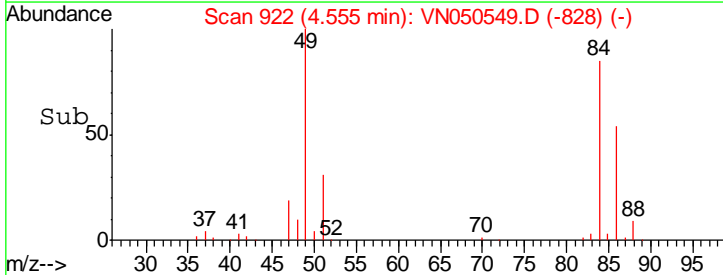
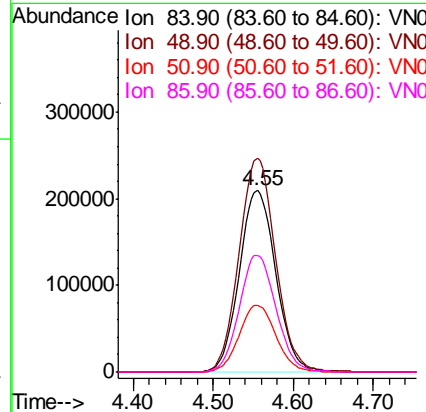
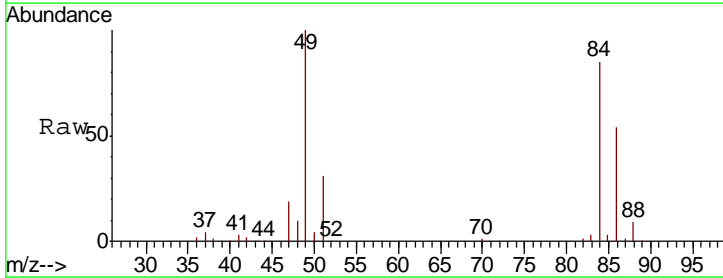
Instrument :
 MSVOA_N
 ClientSampleId :
 JC-03-080918-G

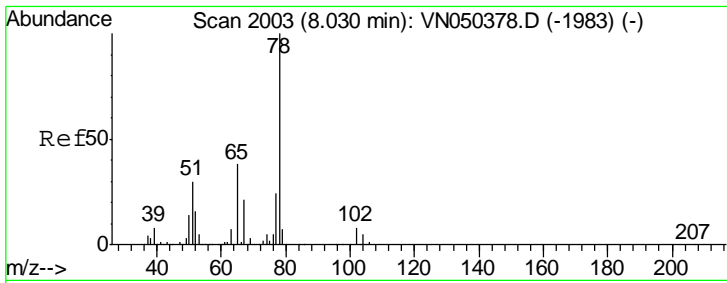
Tgt Ion	Resp	Lower	Upper
43	16739		
43	100		
74	12.9	19.2	28.8#



#20
 Methylene Chloride
 Concen: 90.92 ug/l
 RT: 4.55 min Scan# 922
 Delta R.T. 0.00 min
 Lab File: VN050549.D
 Acq: 11 Aug 2018 4:59

Tgt Ion	Resp	Lower	Upper
84	649052		
84	100		
49	117.8	94.8	142.2
51	36.7	28.3	42.5
86	64.2	51.0	76.6

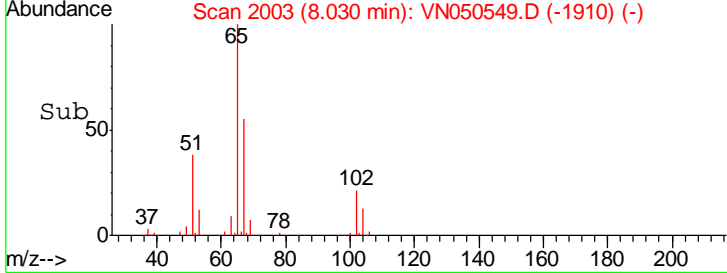
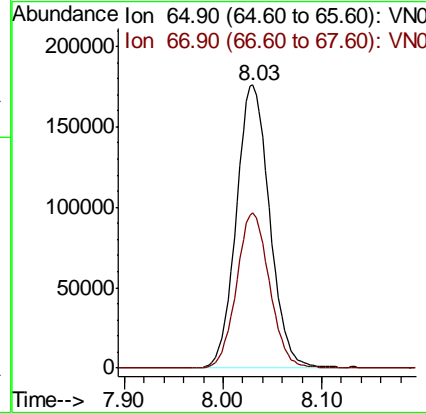
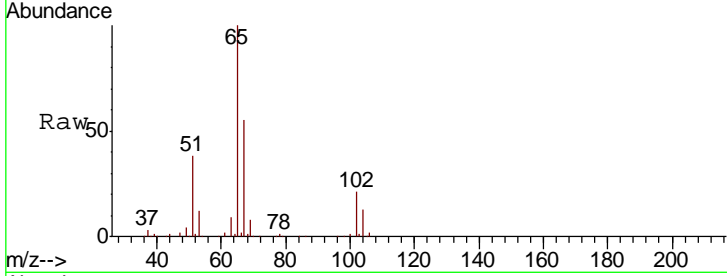




#33
 1,2-Dichloroethane-d4
 Concen: 52.12 ug/l
 RT: 8.03 min Scan# 2003
 Delta R.T. 0.00 min
 Lab File: VN050549.D
 Acq: 11 Aug 2018 4:59

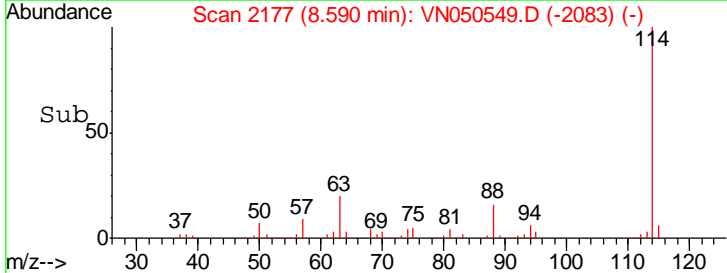
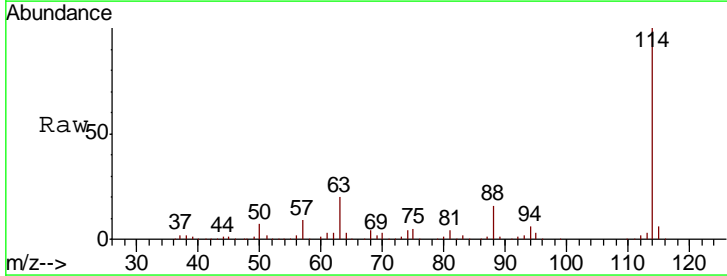
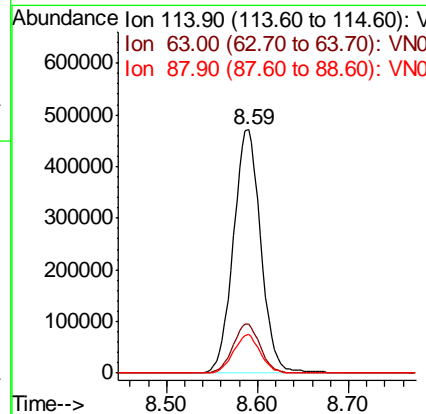
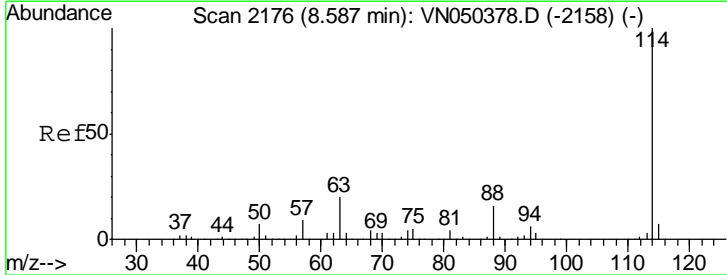
Instrument : MSVOA_N
 ClientSampled : JC-03-080918-G

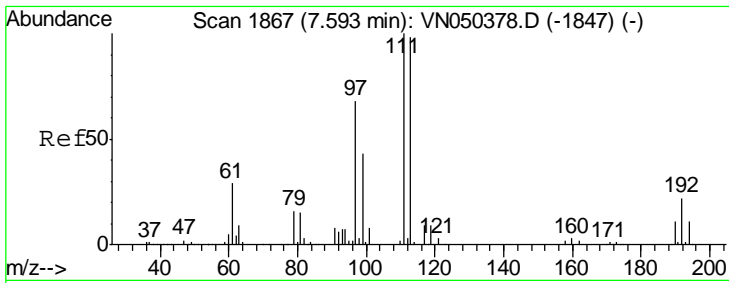
Tgt Ion	Resp	Lower	Upper
65	100		
67	54.3	0.0	108.4



#34
 1,4-Difluorobenzene
 Concen: 50.00 ug/l
 RT: 8.59 min Scan# 2177
 Delta R.T. 0.00 min
 Lab File: VN050549.D
 Acq: 11 Aug 2018 4:59

Tgt Ion	Resp	Lower	Upper
114	100		
63	19.9	0.0	40.0
88	15.8	0.0	31.2

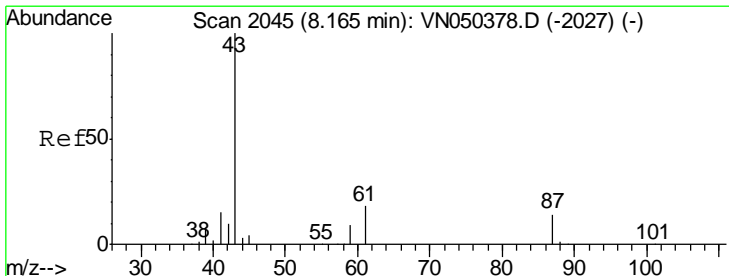
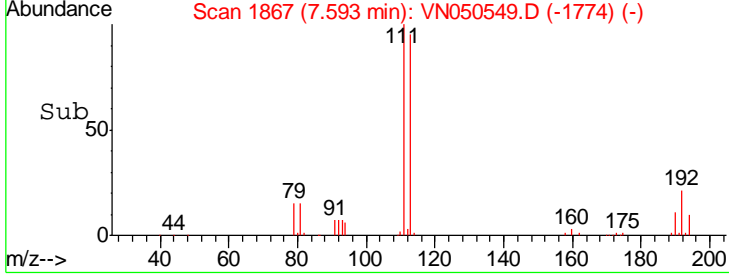
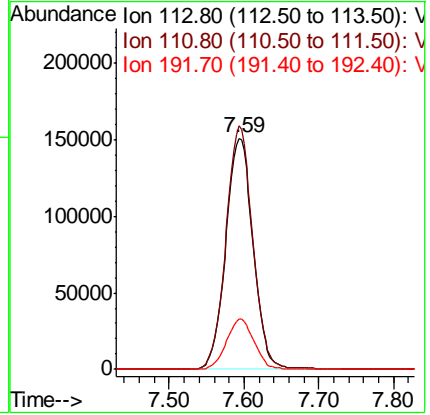
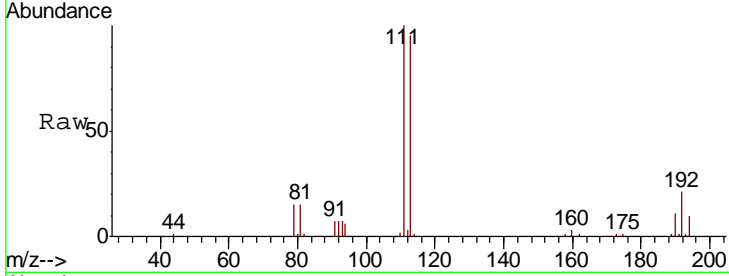




#35
 Dibromofluoromethane
 Concen: 48.34 ug/l
 RT: 7.59 min Scan# 1867
 Delta R.T. 0.00 min
 Lab File: VN050549.D
 Acq: 11 Aug 2018 4:59

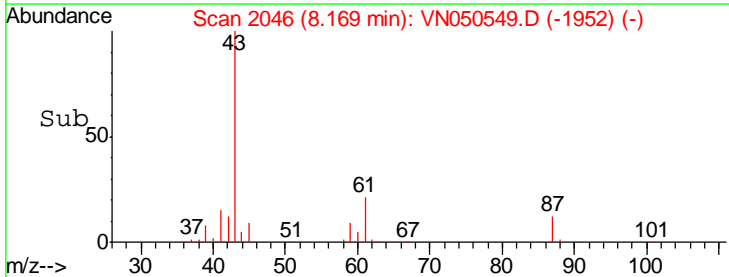
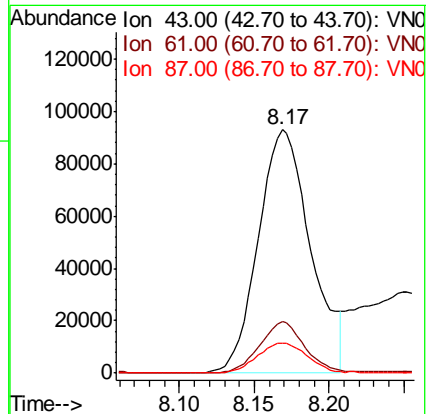
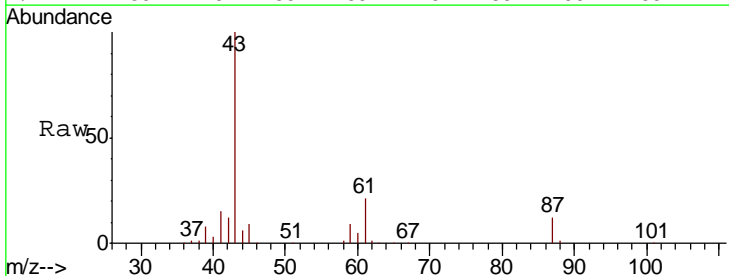
Instrument : MSVOA_N
 ClientSampled : JC-03-080918-G

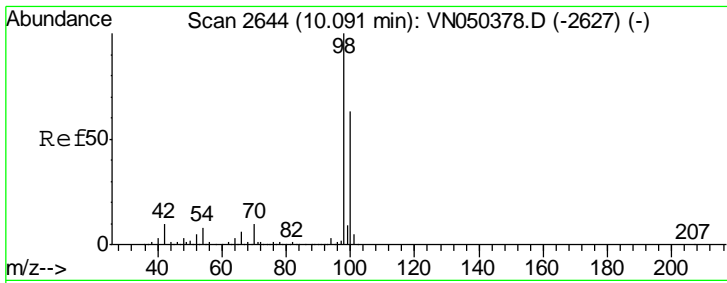
Tgt Ion	Resp	Lower	Upper
113	381870		
111	103.1	80.7	121.1
192	22.0	17.8	26.6



#43
 Isopropyl Acetate
 Concen: 16.76 ug/l
 RT: 8.17 min Scan# 2046
 Delta R.T. 0.00 min
 Lab File: VN050549.D
 Acq: 11 Aug 2018 4:59

Tgt Ion	Resp	Lower	Upper
43	225383		
61	18.3	15.8	23.6
87	11.7	10.3	15.5



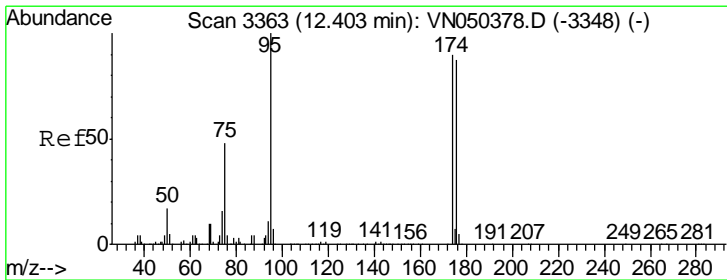
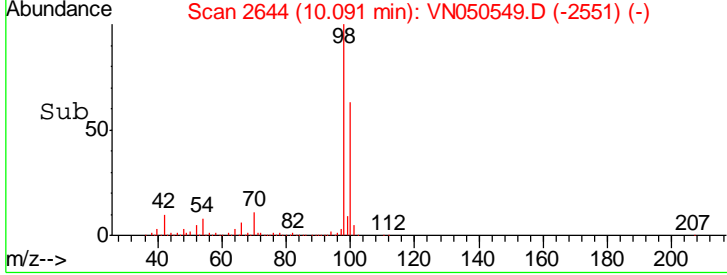
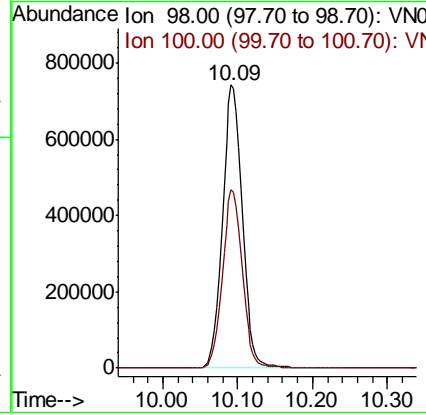
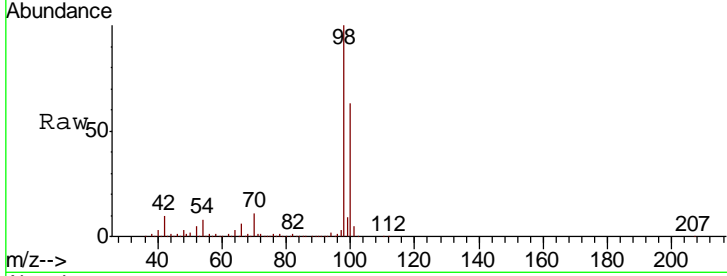


#50
 Toluene-d8
 Concen: 45.79 ug/l
 RT: 10.09 min Scan# 2644
 Delta R.T. 0.00 min
 Lab File: VN050549.D
 Acq: 11 Aug 2018 4:59

Instrument : MSVOA_N
 ClientSampled : JC-03-080918-G

Tgt Ion: 98 Resp: 1360134

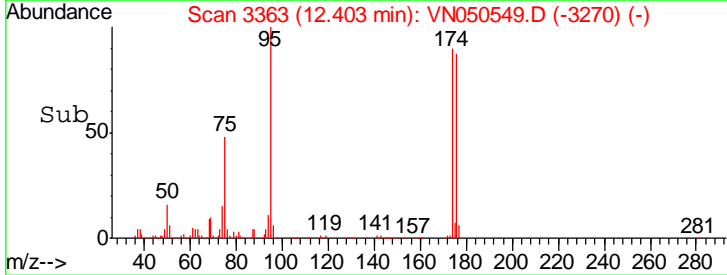
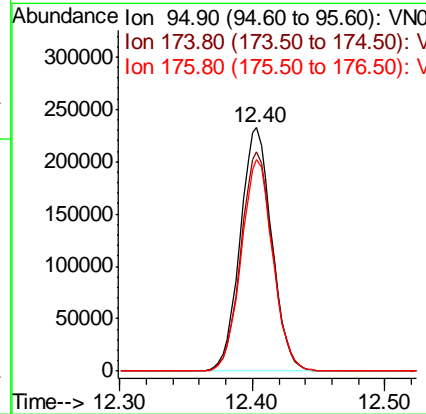
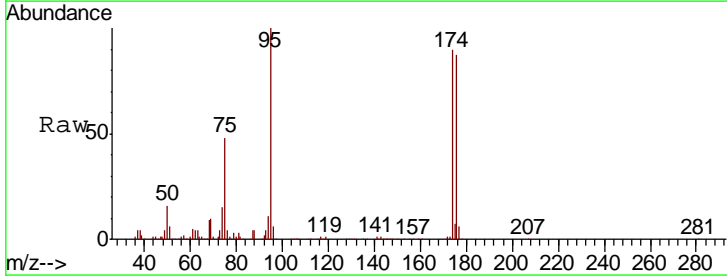
Ion	Ratio	Lower	Upper
98	100		
100	63.2	50.7	76.1

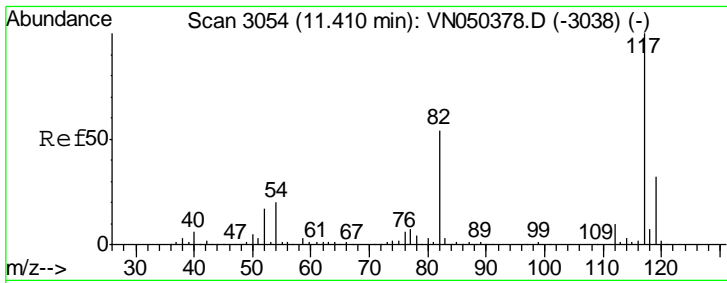


#62
 4-Bromofluorobenzene
 Concen: 37.94 ug/l
 RT: 12.40 min Scan# 3363
 Delta R.T. 0.00 min
 Lab File: VN050549.D
 Acq: 11 Aug 2018 4:59

Tgt Ion: 95 Resp: 384052

Ion	Ratio	Lower	Upper
95	100		
174	90.7	0.0	178.2
176	87.0	0.0	173.4

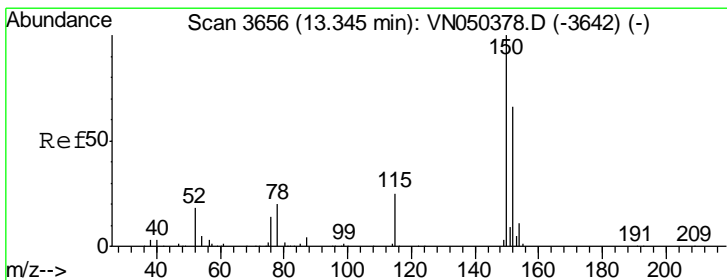
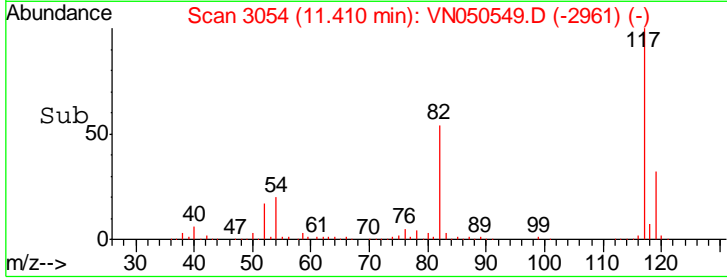
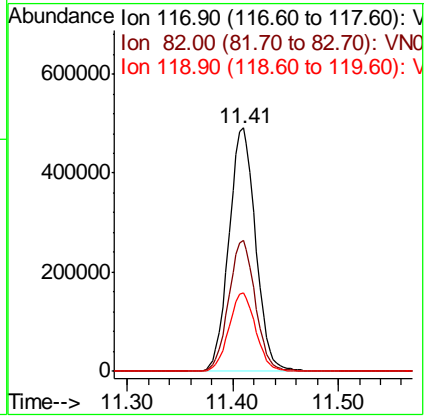
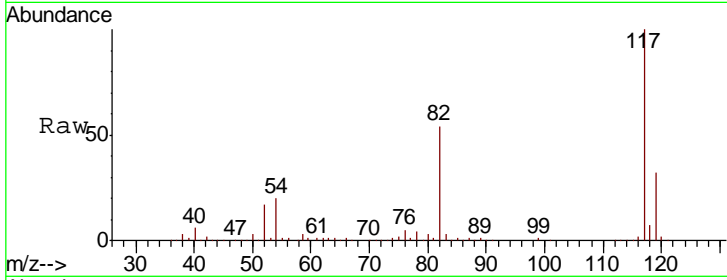




#63
 Chlorobenzene-d5
 Concen: 50.00 ug/l
 RT: 11.41 min Scan# 3054
 Delta R.T. 0.00 min
 Lab File: VN050549.D
 Acq: 11 Aug 2018 4:59

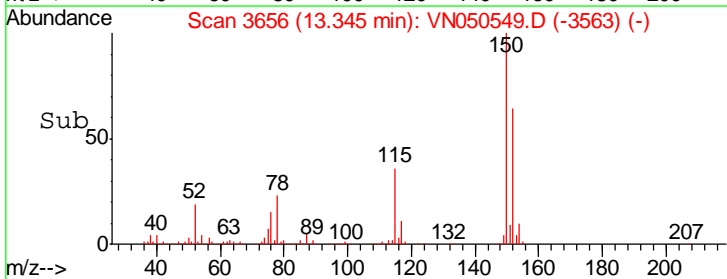
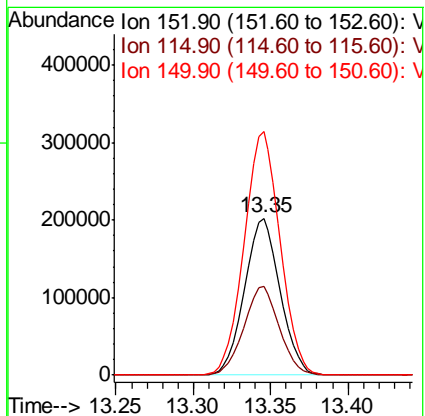
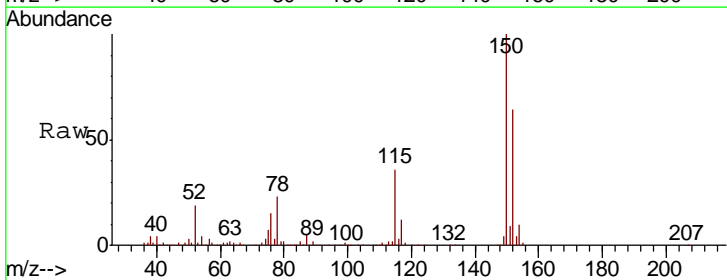
Instrument : MSVOA_N
 ClientSampled : JC-03-080918-G

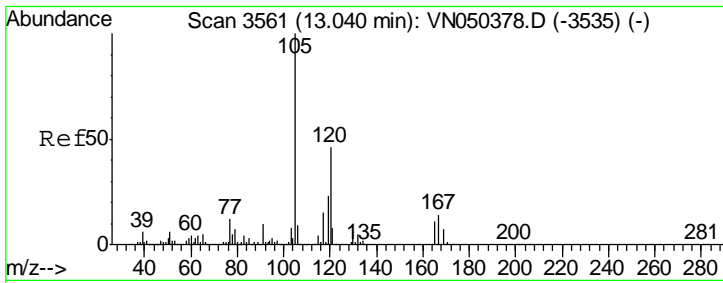
Tgt Ion	Resp	Lower	Upper
117	858689		
82	53.8	43.7	65.5
119	32.1	26.1	39.1



#72
 1,4-Dichlorobenzene-d4
 Concen: 50.00 ug/l
 RT: 13.35 min Scan# 3656
 Delta R.T. 0.00 min
 Lab File: VN050549.D
 Acq: 11 Aug 2018 4:59

Tgt Ion	Resp	Lower	Upper
152	323855		
152	100		
115	56.4	27.8	83.3
150	157.1	0.0	348.6

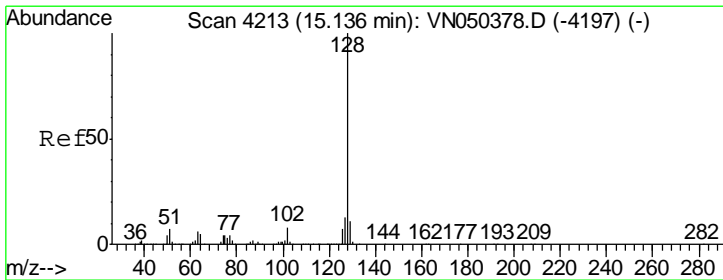
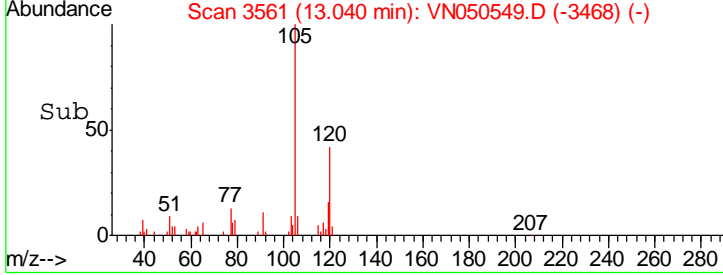
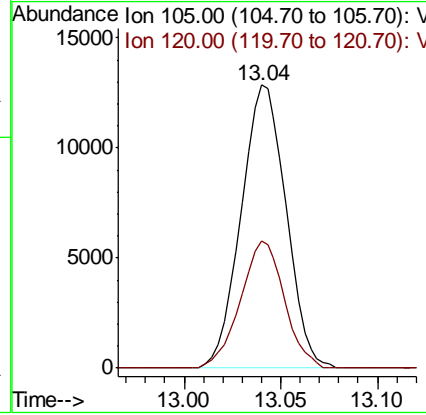
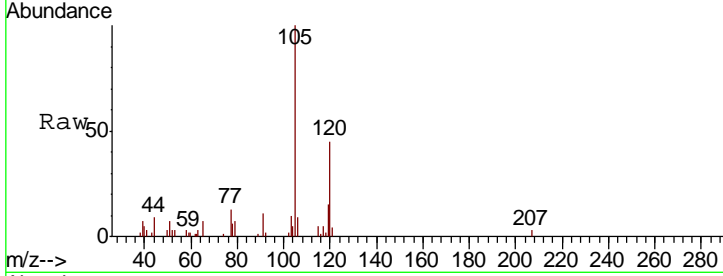




#84
 1,2,4-Trimethylbenzene
 Concen: 1.04 ug/l
 RT: 13.04 min Scan# 3561
 Delta R.T. 0.00 min
 Lab File: VN050549.D
 Acq: 11 Aug 2018 4:59

Instrument : MSVOA_N
 ClientSampled : JC-03-080918-G

Tgt Ion	Resp	Lower	Upper
105	20729		
120	43.9	22.9	68.7



#95
 Naphthalene
 Concen: 6.61 ug/l
 RT: 15.13 min Scan# 4212
 Delta R.T. -0.00 min
 Lab File: VN050549.D
 Acq: 11 Aug 2018 4:59

Tgt Ion	Resp	Lower	Upper
128	50559		
127	13.9	10.4	15.6
129	11.4	8.8	13.2

