

Data Path : Z:\VOASRV\HPCHEM1\MSVOA_N\DATA\VN081019\
 Data File : VN057172.D
 Acq On : 10 Aug 2019 13:27
 Operator : JC/SP
 Sample : K4221-02
 Misc : 5.00mL/MSVOA_N/WATER
 ALS Vial : 11 Sample Multiplier: 1

Instrument :
 MSVOA_N
ClientSampleId :
 DSN-002-SEWER-OUTLET-02

Quant Time: Aug 11 03:57:19 2019
 Quant Method : Z:\VOASRV\HPCHEM1\MSVOA_N\METHODS\624N081019W.M
 Quant Title : METHOD 624 VOLATILE ORGANIC ANALYSIS
 QLast Update : Sun Aug 11 03:53:25 2019
 Response via : Initial Calibration

| Internal Standards | R.T. | QIon | Response | Conc | Units | Dev(Min) |
|-------------------------|-------|------|----------|-------|-------|----------|
| 1) Bromochloromethane | 6.59 | 128 | 171752 | 30.00 | ug/l | 0.00 |
| 28) 1,4-Difluorobenzene | 8.01 | 114 | 938960 | 30.00 | ug/l | 0.00 |
| 57) Chlorobenzene-d5 | 10.91 | 117 | 765905 | 30.00 | ug/l | 0.00 |

System Monitoring Compounds

| | | | | | | |
|---------------------------|--------|-------|----------|----------|------|---------|
| 27) 1,2-Dichloroethane-d4 | 7.44 | 65 | 338047 | 30.19 | ug/l | 0.00 |
| Spiked Amount | 30.000 | Range | 50 - 169 | Recovery | = | 100.63% |
| 60) 4-Bromofluorobenzene | 11.92 | 95 | 267593 | 23.46 | ug/l | 0.00 |
| Spiked Amount | 30.000 | Range | 56 - 143 | Recovery | = | 78.20% |
| 63) Toluene-d8 | 9.56 | 98 | 1116511 | 31.58 | ug/l | 0.00 |
| Spiked Amount | 30.000 | Range | 66 - 137 | Recovery | = | 105.27% |

Target Compounds

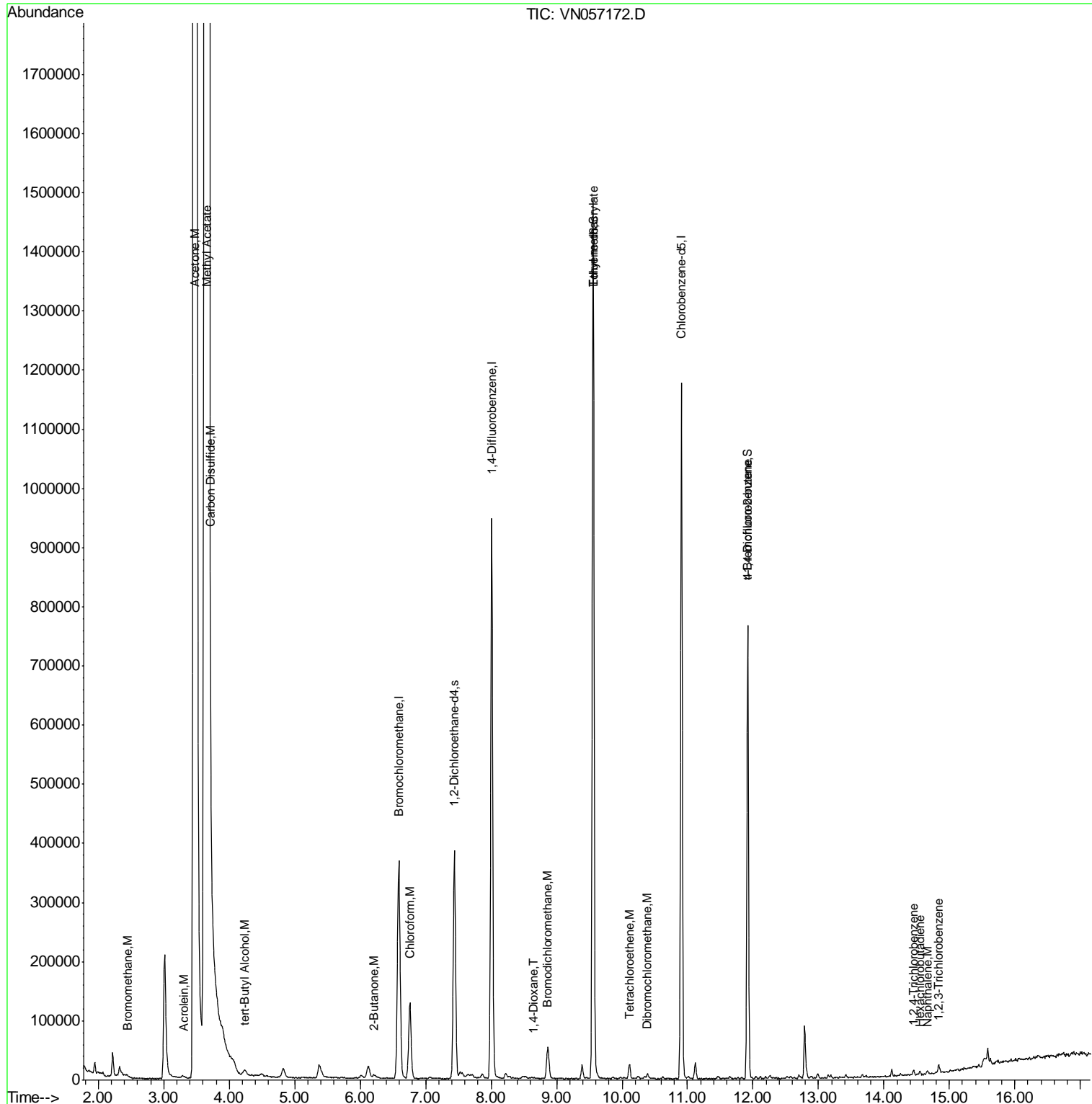
| | | | | | | Qvalue |
|-----------------------------|-------|-----|----------|----------|--------|--------|
| 5) Bromomethane | 2.45 | 94 | 1842 | 0.234 | ug/l | 91 |
| 12) Methyl Acetate | 3.66 | 43 | 14100337 | 1374.893 | ug/l # | 49 |
| 13) Acrolein | 3.32 | 56 | 2266 | 2.004 | ug/l # | 32 |
| 15) Acetone | 3.48 | 58 | 8133695 | 5727.755 | ug/l | 87 |
| 16) Carbon Disulfide | 3.72 | 76 | 6256 | 0.236 | ug/l # | 91 |
| 23) tert-Butyl Alcohol | 4.24 | 59 | 779 | 0.552 | ug/l # | 100 |
| 25) Chloroform | 6.76 | 83 | 145116 | 7.655 | ug/l | 98 |
| 30) 2-Butanone | 6.20 | 43 | 4024 | 0.724 | ug/l # | 70 |
| 41) Bromodichloromethane | 8.85 | 83 | 10298 | 0.724 | ug/l | 88 |
| 45) 1,4-Dioxane | 8.65 | 88 | 68 | 0.391 | ug/l # | 1 |
| 51) Ethyl methacrylate | 9.56 | 69 | 3001 | 0.208 | ug/l | 90 |
| 53) Dibromochloromethane | 10.39 | 129 | 5164 | 0.448 | ug/l | 87 |
| 61) Tetrachloroethene | 10.11 | 164 | 6676 | 0.568 | ug/l | 91 |
| 77) t-1,4-Dichloro-2-butene | 11.92 | 75 | 121471 | 32.689 | ug/l # | 13 |
| 89) 1,2,4-Trichlorobenzene | 14.45 | 180 | 3631 | 9.390 | ug/l | 87 |
| 90) Hexachlorobutadiene | 14.55 | 225 | 1797 | 0.231 | ug/l | 70 |
| 91) Naphthalene | 14.66 | 128 | 4275 | 0.312 | ug/l # | 91 |
| 92) 1,2,3-Trichlorobenzene | 14.84 | 180 | 4442 | 8.823 | ug/l | 91 |

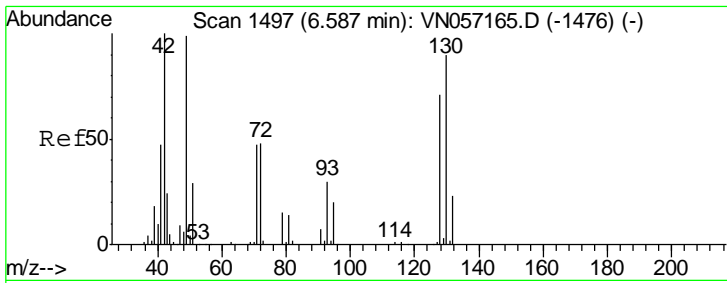
(#) = qualifier out of range (m) = manual integration (+) = signals summed

Data Path : Z:\VOASRV\HPCHEM1\MSVOA_N\DATA\VN081019\
 Data File : VN057172.D
 Acq On : 10 Aug 2019 13:27
 Operator : JC/SP
 Sample : K4221-02
 Misc : 5.00mL/MSVOA_N/WATER
 ALS Vial : 11 Sample Multiplier: 1

Instrument :
 MSVOA_N
 ClientSampleId :
 DSN-002-SEWER-OUTLET-02

Quant Time: Aug 11 03:57:19 2019
 Quant Method : Z:\VOASRV\HPCHEM1\MSVOA_N\METHODS\624N081019W.M
 Quant Title : METHOD 624 VOLATILE ORGANIC ANALYSIS
 QLast Update : Sun Aug 11 03:53:25 2019
 Response via : Initial Calibration

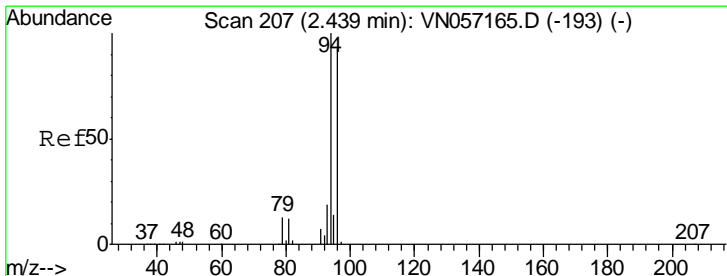
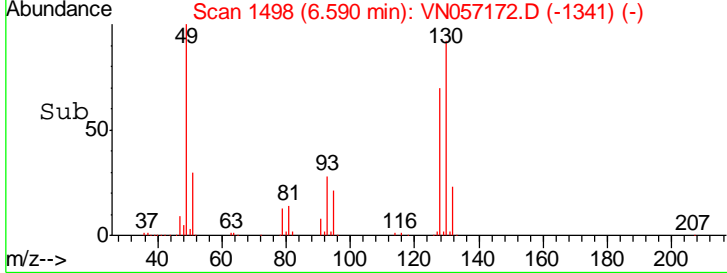
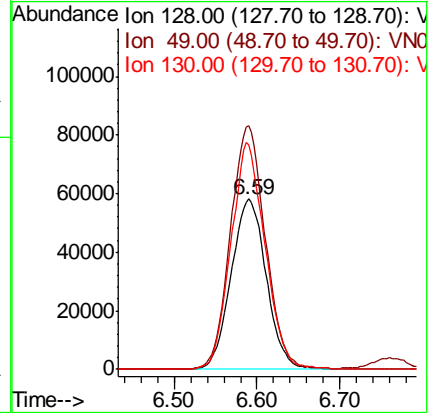
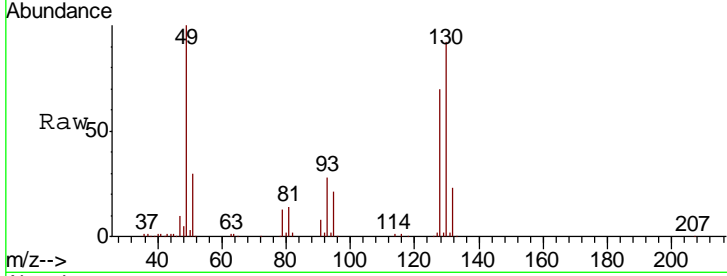




#1
 Bromochloromethane
 Concen: 30.000 ug/l
 RT: 6.59 min Scan# 1498
 Delta R.T. 0.00 min
 Lab File: VN057172.D
 Acq: 10 Aug 2019 13:27

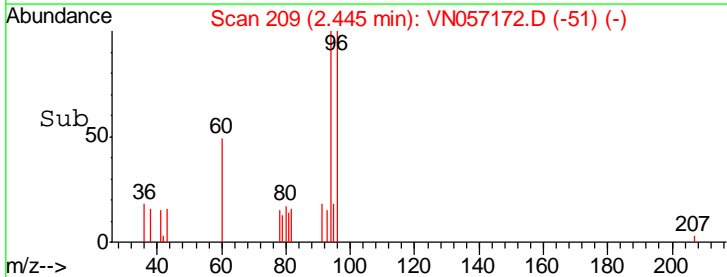
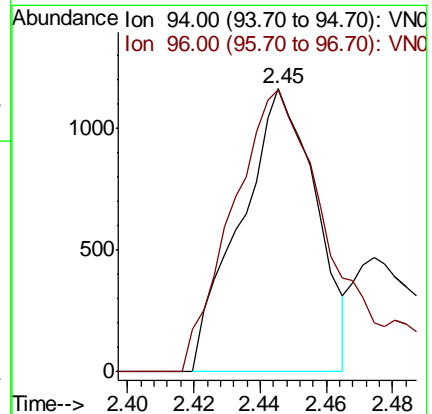
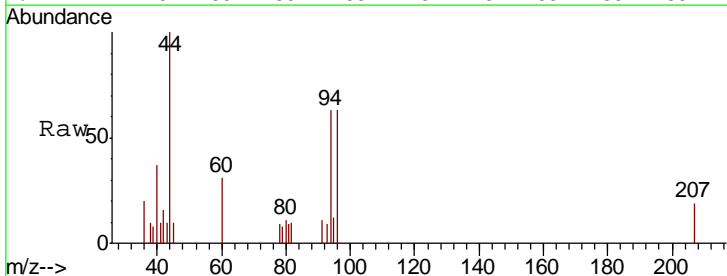
Instrument :
 MSVOA_N
ClientSampled :
 DSN-002-SEWER-OUTLET-02

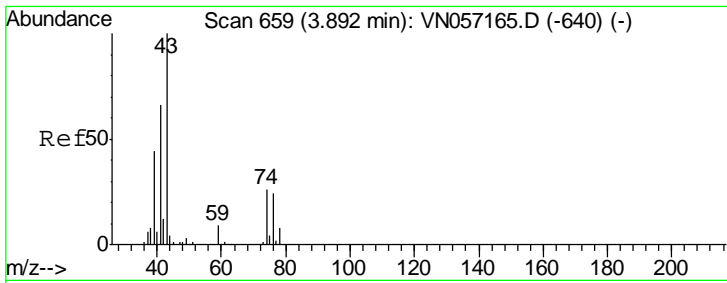
| Tgt Ion | Resp | Lower | Upper |
|---------|--------|-------|-------|
| 128 | 171752 | | |
| 49 | 141.0 | 0.0 | 361.0 |
| 130 | 128.6 | 0.0 | 329.5 |



#5
 Bromomethane
 Concen: 0.234 ug/l
 RT: 2.45 min Scan# 209
 Delta R.T. 0.01 min
 Lab File: VN057172.D
 Acq: 10 Aug 2019 13:27

| Tgt Ion | Resp | Lower | Upper |
|---------|------|-------|-------|
| 94 | 1842 | | |
| 94 | 100 | | |
| 96 | 84.8 | 74.7 | 112.1 |

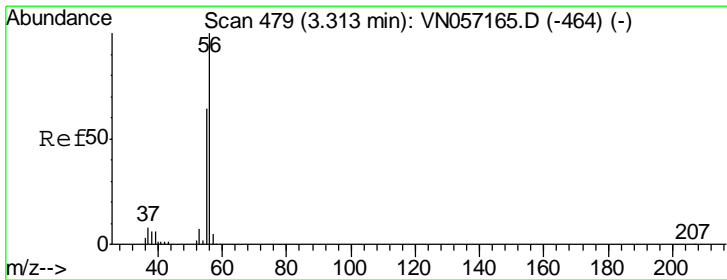
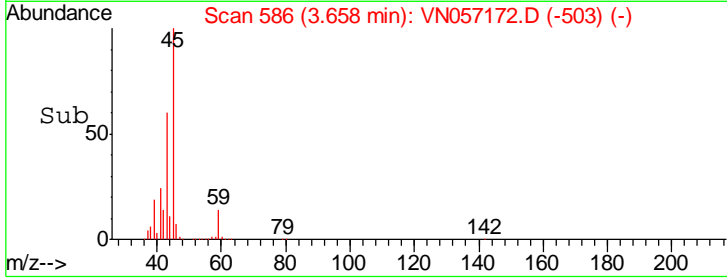
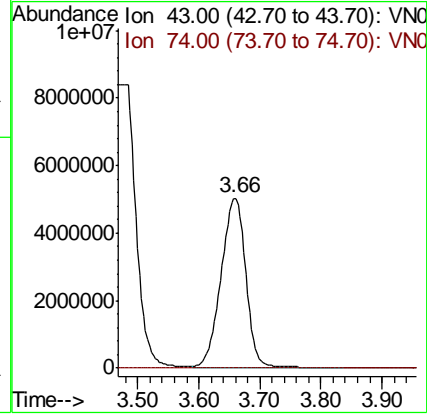
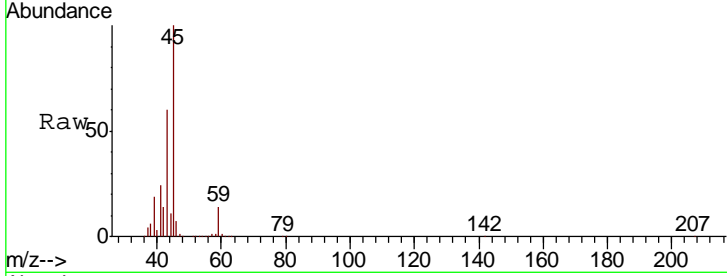




#12
 Methyl Acetate
 Concen: 1374.893 ug/l
 RT: 3.66 min Scan# 586
 Delta R.T. -0.23 min
 Lab File: VN057172.D
 Acq: 10 Aug 2019 13:27

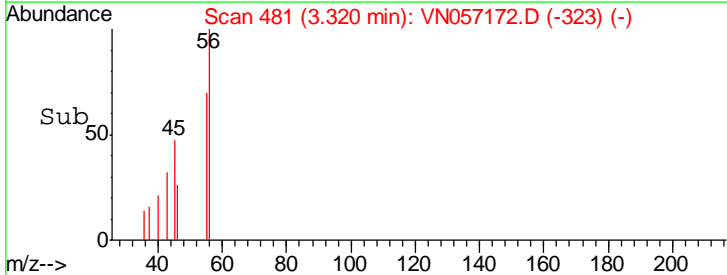
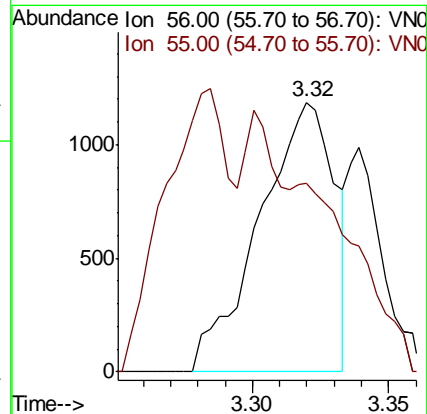
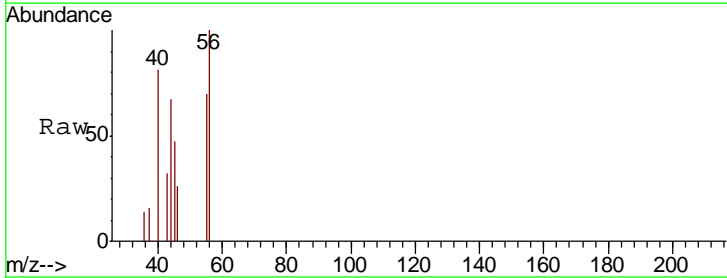
Instrument :
 MSVOA_N
 ClientSampled :
 DSN-002-SEWER-OUTLET-02

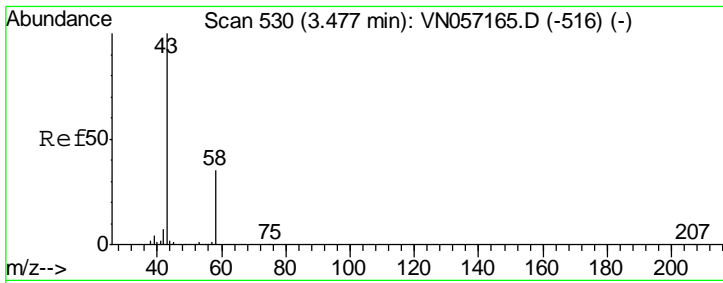
Tgt Ion: 43 Resp:14100337
 Ion Ratio Lower Upper
 43 100
 74 0.0 20.5 30.7#



#13
 Acrolein
 Concen: 2.004 ug/l
 RT: 3.32 min Scan# 481
 Delta R.T. 0.01 min
 Lab File: VN057172.D
 Acq: 10 Aug 2019 13:27

Tgt Ion: 56 Resp: 2266
 Ion Ratio Lower Upper
 56 100
 55 14.2 56.5 84.7#

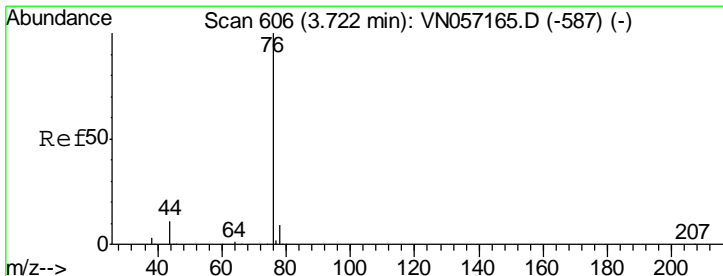
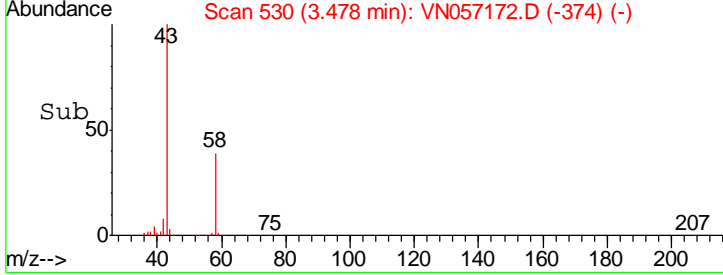
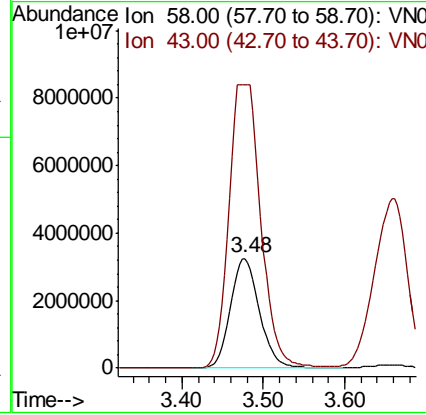
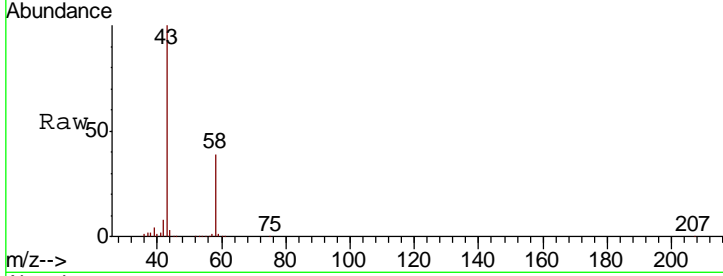




#15
 Acetone
 Concen: 5727.755 ug/l
 RT: 3.48 min Scan# 530
 Delta R.T. 0.00 min
 Lab File: VN057172.D
 Acq: 10 Aug 2019 13:27

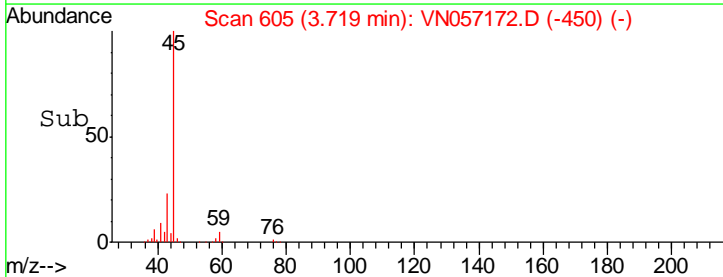
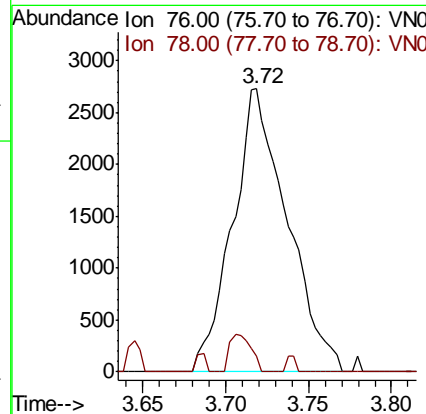
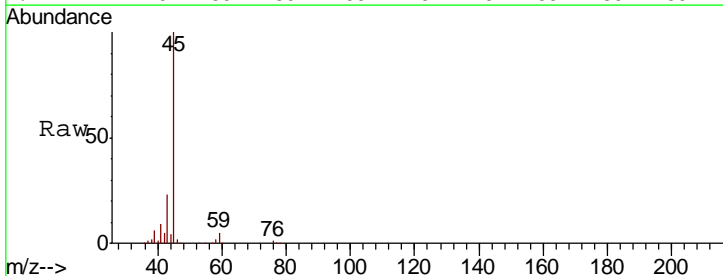
Instrument :
 MSVOA_N
ClientSampled :
 DSN-002-SEWER-OUTLET-02

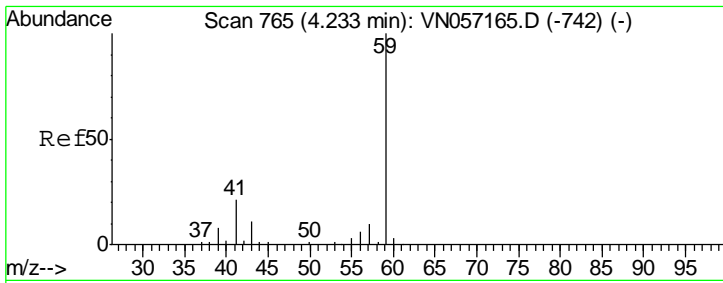
Tgt Ion: 58 Resp: 8133695
 Ion Ratio Lower Upper
 58 100
 43 258.6 226.2 339.2



#16
 Carbon Disulfide
 Concen: 0.236 ug/l
 RT: 3.72 min Scan# 605
 Delta R.T. -0.00 min
 Lab File: VN057172.D
 Acq: 10 Aug 2019 13:27

Tgt Ion: 76 Resp: 6256
 Ion Ratio Lower Upper
 76 100
 78 5.7 7.3 10.9#

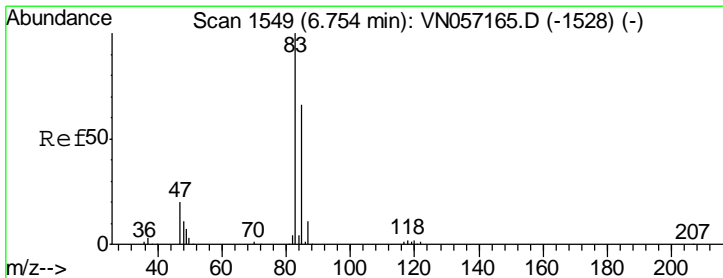
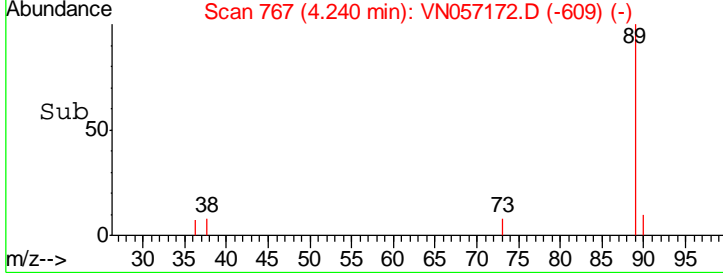
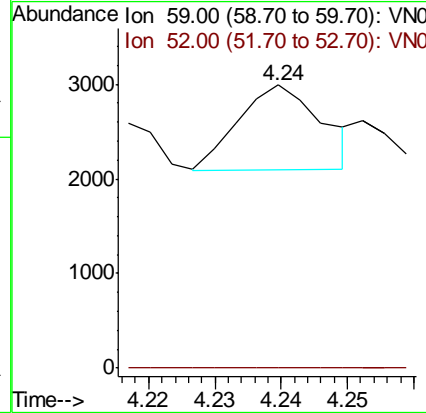
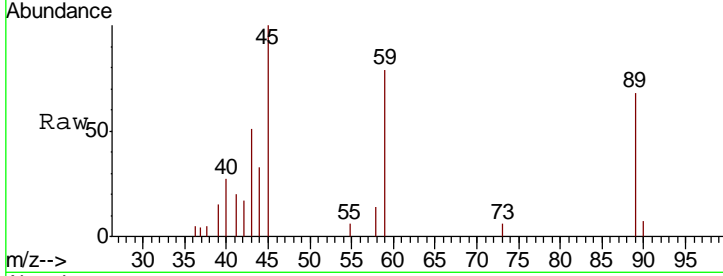




#23
 tert-Butyl Alcohol
 Concen: 0.552 ug/l
 RT: 4.24 min Scan# 767
 Delta R.T. 0.01 min
 Lab File: VN057172.D
 Acq: 10 Aug 2019 13:27

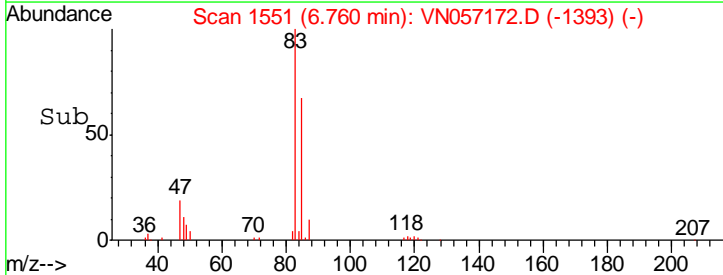
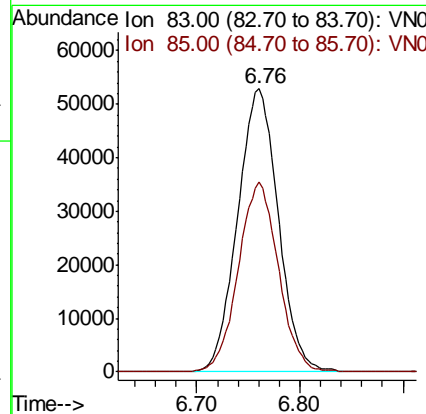
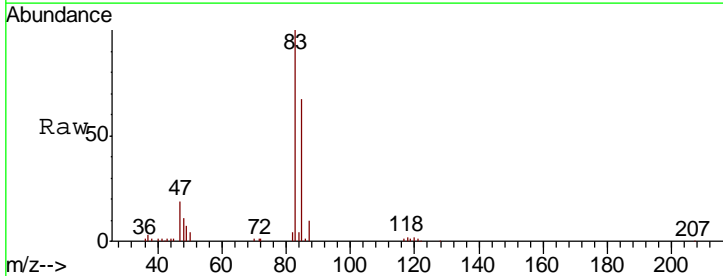
Instrument :
 MSVOA_N
 ClientSampled :
 DSN-002-SEWER-OUTLET-02

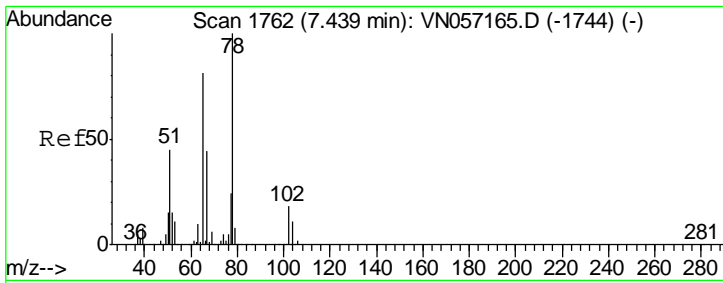
| Tgt Ion | Resp | Lower | Upper |
|---------|------|-------|-------|
| 59 | 100 | | |
| 52 | 0.0 | 0.2 | 0.2# |



#25
 Chloroform
 Concen: 7.655 ug/l
 RT: 6.76 min Scan# 1551
 Delta R.T. 0.01 min
 Lab File: VN057172.D
 Acq: 10 Aug 2019 13:27

| Tgt Ion | Resp | Lower | Upper |
|---------|------|-------|-------|
| 83 | 100 | | |
| 85 | 67.3 | 52.5 | 78.7 |

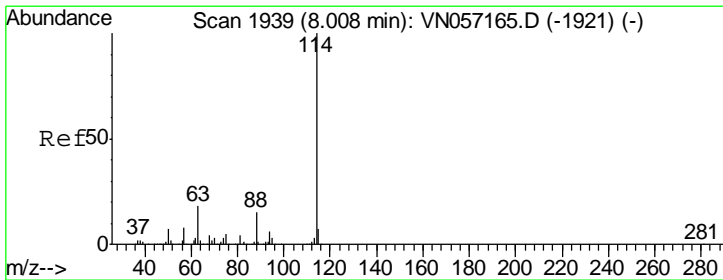
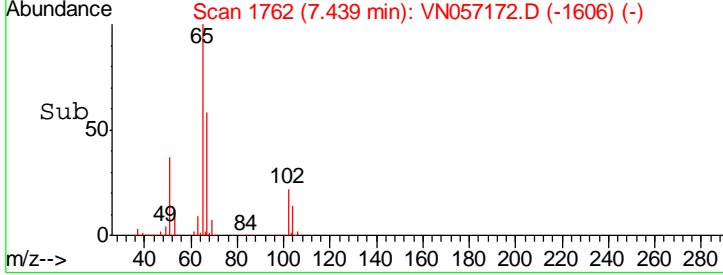
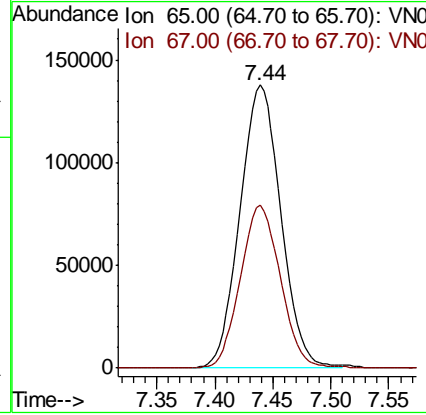
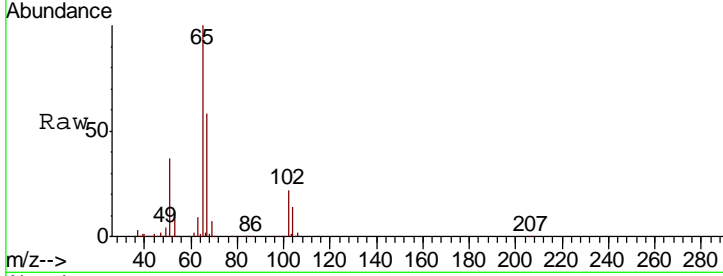




#27
 1,2-Dichloroethane-d4
 Concen: 30.194 ug/l
 RT: 7.44 min Scan# 1762
 Delta R.T. 0.00 min
 Lab File: VN057172.D
 Acq: 10 Aug 2019 13:27

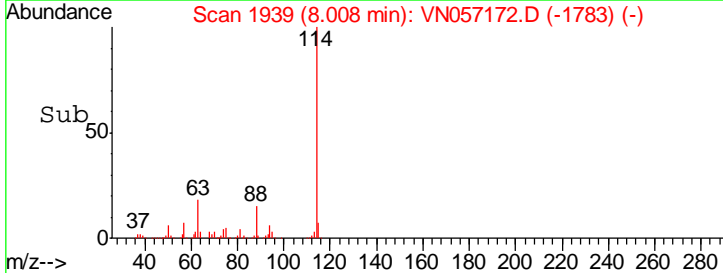
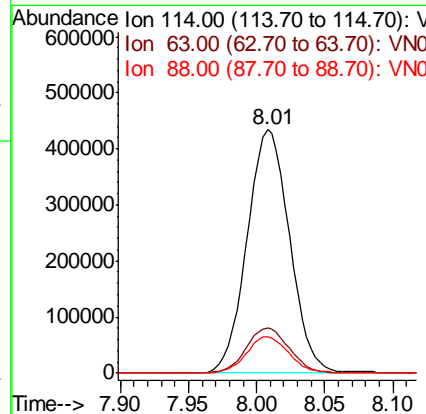
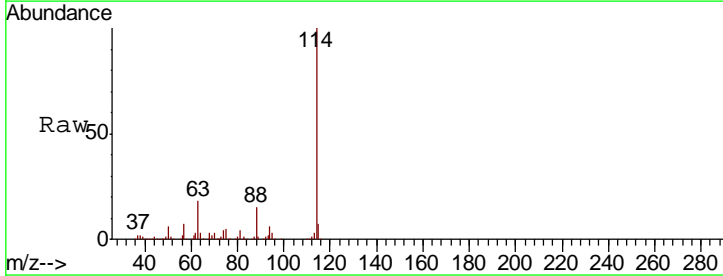
Instrument :
 MSVOA_N
ClientSampled :
 DSN-002-SEWER-OUTLET-02

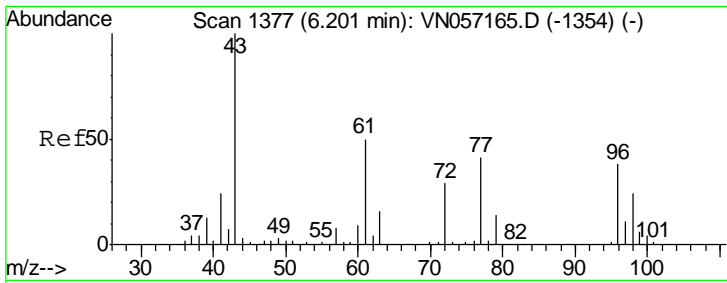
| Tgt Ion | Resp | Lower | Upper |
|---------|------|-------|-------|
| 65 | 100 | | |
| 67 | 56.3 | 42.4 | 63.6 |



#28
 1,4-Difluorobenzene
 Concen: 30.000 ug/l
 RT: 8.01 min Scan# 1939
 Delta R.T. 0.00 min
 Lab File: VN057172.D
 Acq: 10 Aug 2019 13:27

| Tgt Ion | Resp | Lower | Upper |
|---------|------|-------|-------|
| 114 | 100 | | |
| 63 | 18.8 | 14.6 | 21.8 |
| 88 | 15.0 | 12.2 | 18.2 |

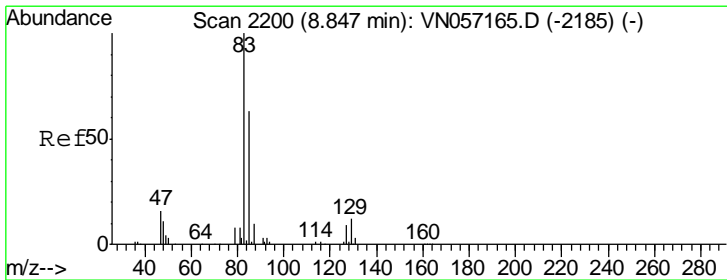
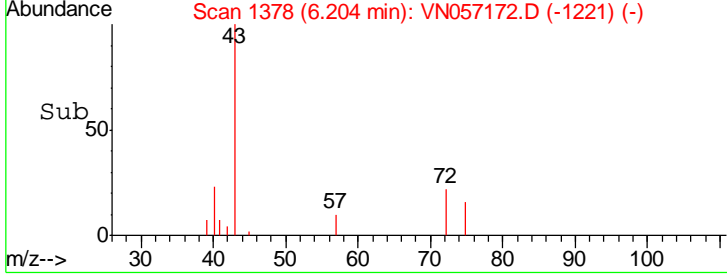
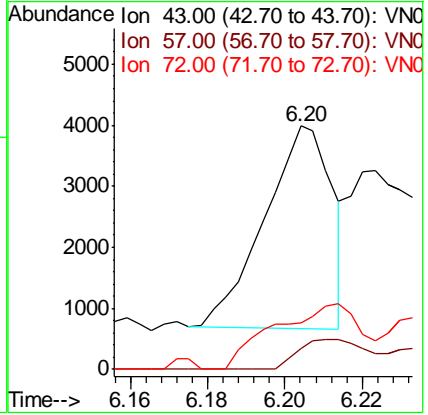
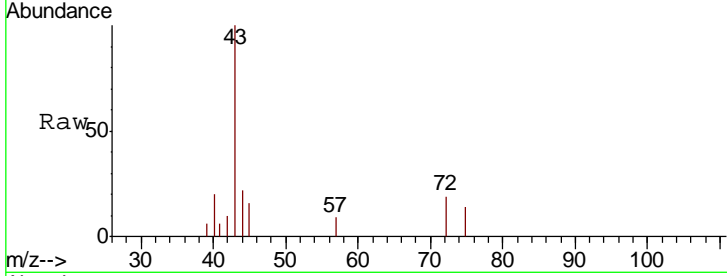




#30
 2-Butanone
 Concen: 0.724 ug/l
 RT: 6.20 min Scan# 1378
 Delta R.T. 0.00 min
 Lab File: VN057172.D
 Acq: 10 Aug 2019 13:27

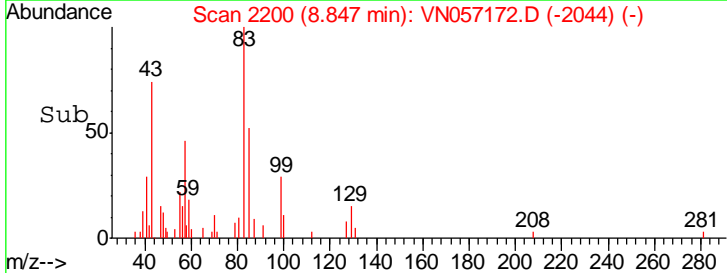
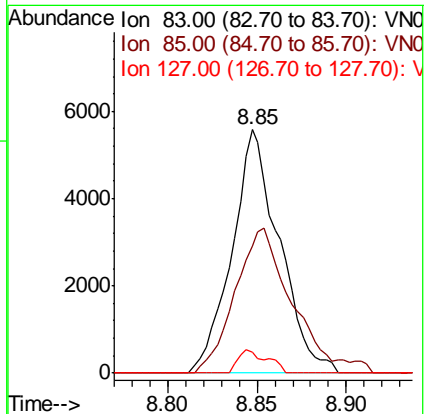
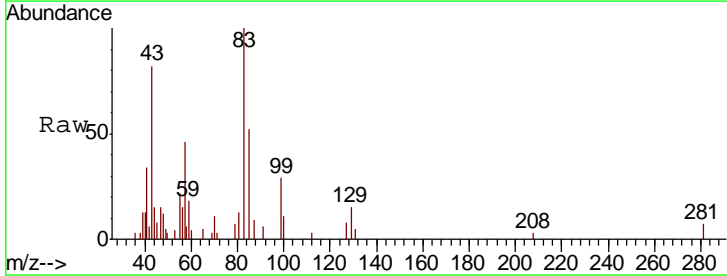
Instrument :
 MSVOA_N
 ClientSampled :
 DSN-002-SEWER-OUTLET-02

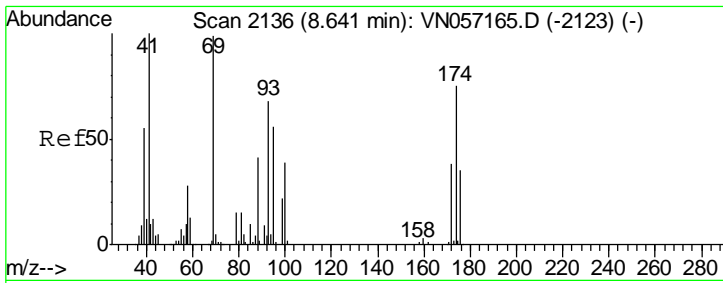
| Tgt Ion | Resp | Lower | Upper |
|---------|------|-------|-------|
| 43 | 100 | | |
| 57 | 14.4 | 6.8 | 10.2# |
| 72 | 10.4 | 23.0 | 34.6# |



#41
 Bromodichloromethane
 Concen: 0.724 ug/l
 RT: 8.85 min Scan# 2200
 Delta R.T. 0.00 min
 Lab File: VN057172.D
 Acq: 10 Aug 2019 13:27

| Tgt Ion | Resp | Lower | Upper |
|---------|------|-------|-------|
| 83 | 100 | | |
| 85 | 52.4 | 50.6 | 76.0 |
| 127 | 8.4 | 7.0 | 10.6 |

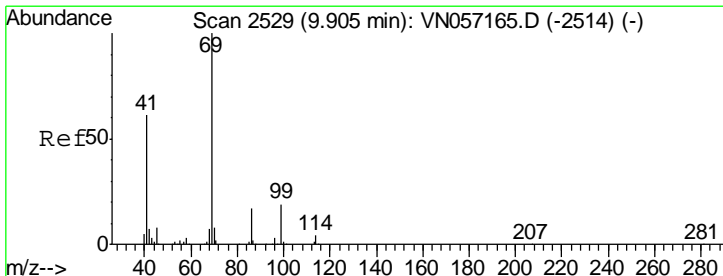
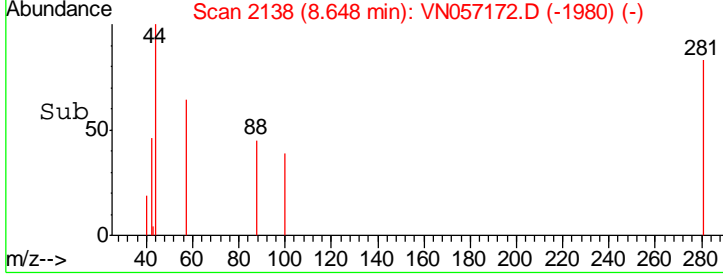
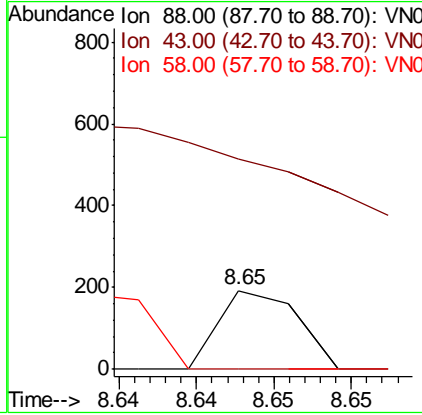
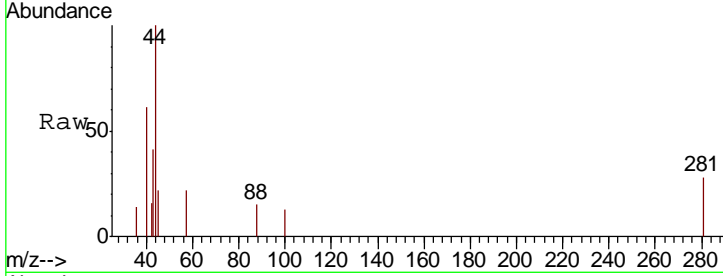




#45
 1,4-Dioxane
 Concen: 0.391 ug/l
 RT: 8.65 min Scan# 2138
 Delta R.T. 0.01 min
 Lab File: VN057172.D
 Acq: 10 Aug 2019 13:27

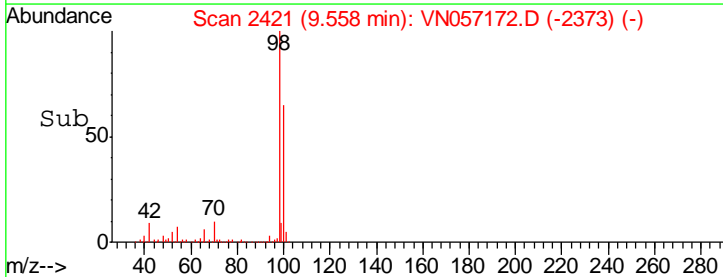
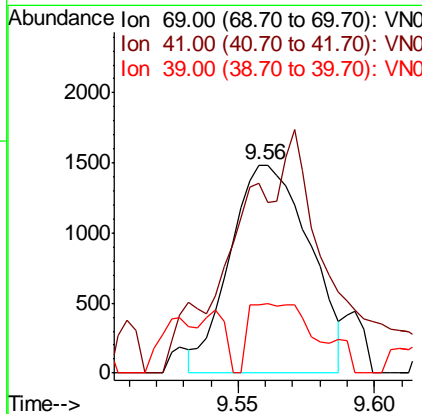
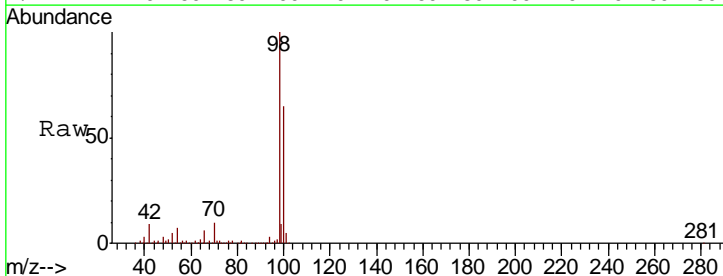
Instrument :
 MSVOA_N
ClientSampled :
 DSN-002-SEWER-OUTLET-02

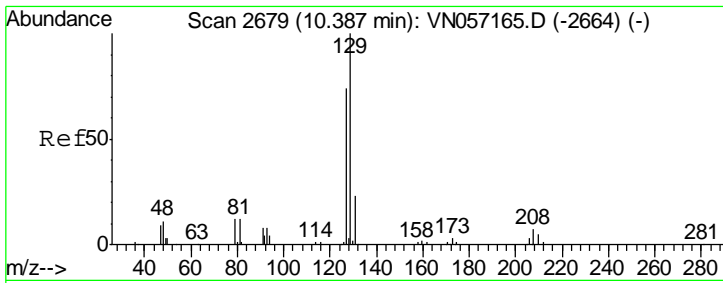
| Tgt Ion | Resp | Lower | Upper |
|---------|-------|-------|-------|
| 88 | 100 | | |
| 43 | 204.4 | 20.5 | 30.7# |
| 58 | 220.6 | 53.8 | 80.8# |



#51
 Ethyl methacrylate
 Concen: 0.208 ug/l
 RT: 9.56 min Scan# 2421
 Delta R.T. -0.35 min
 Lab File: VN057172.D
 Acq: 10 Aug 2019 13:27

| Tgt Ion | Resp | Lower | Upper |
|---------|------|-------|-------|
| 69 | 100 | | |
| 41 | 64.9 | 30.4 | 91.2 |
| 39 | 19.2 | 14.8 | 44.4 |

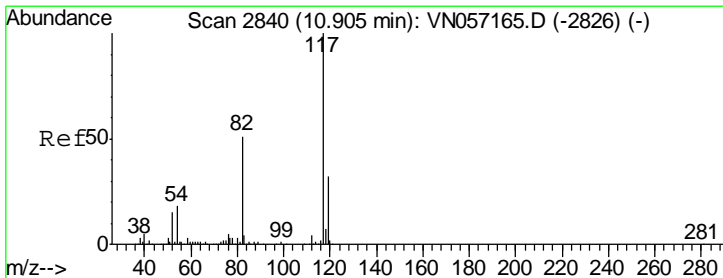
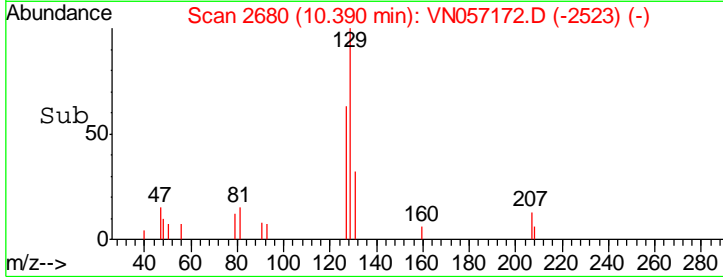
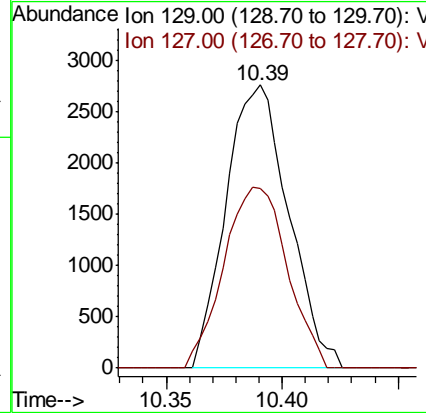
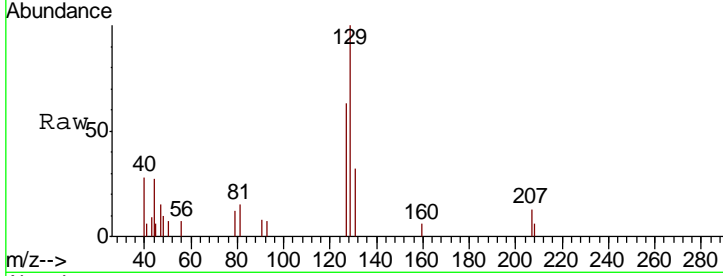




#53
 Dibromochloromethane
 Concen: 0.448 ug/l
 RT: 10.39 min Scan# 2680
 Delta R.T. 0.00 min
 Lab File: VN057172.D
 Acq: 10 Aug 2019 13:27

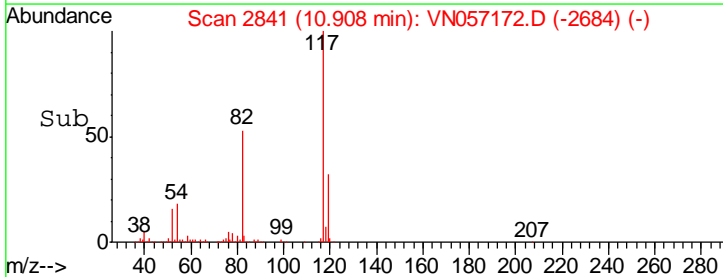
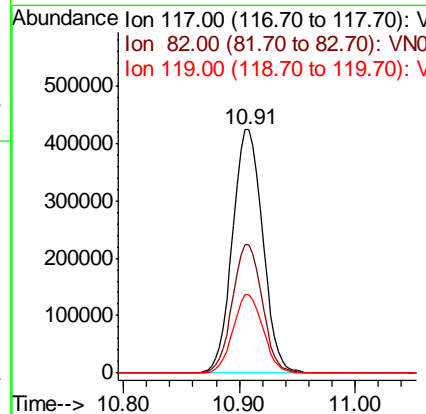
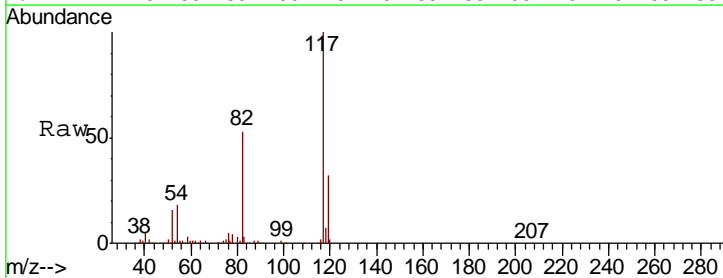
Instrument : MSVOA_N
 ClientSampled : DSN-002-SEWER-OUTLET-02

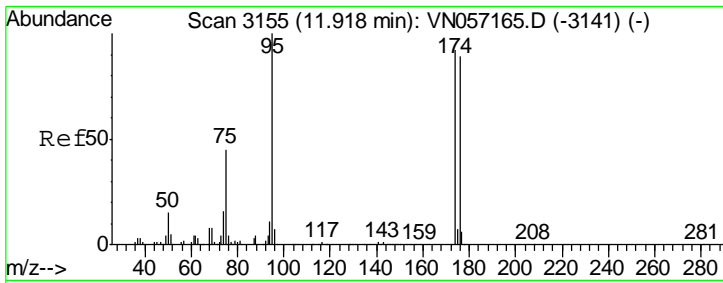
Tgt Ion:129 Resp: 5164
 Ion Ratio Lower Upper
 129 100
 127 64.9 38.2 114.6



#57
 Chlorobenzene-d5
 Concen: 30.000 ug/l
 RT: 10.91 min Scan# 2841
 Delta R.T. 0.00 min
 Lab File: VN057172.D
 Acq: 10 Aug 2019 13:27

Tgt Ion:117 Resp: 765905
 Ion Ratio Lower Upper
 117 100
 82 52.1 41.5 62.3
 119 31.9 26.1 39.1

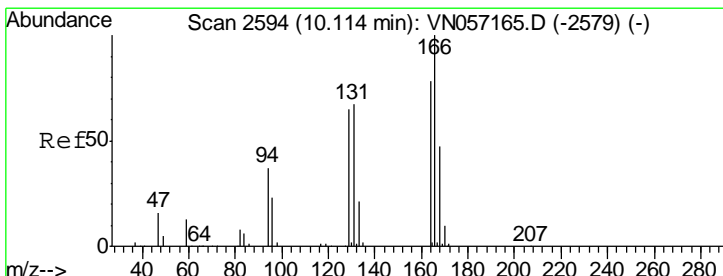
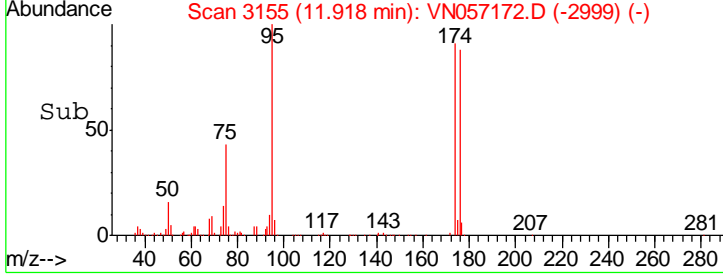
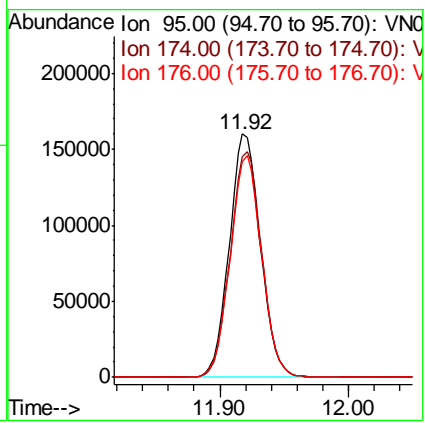
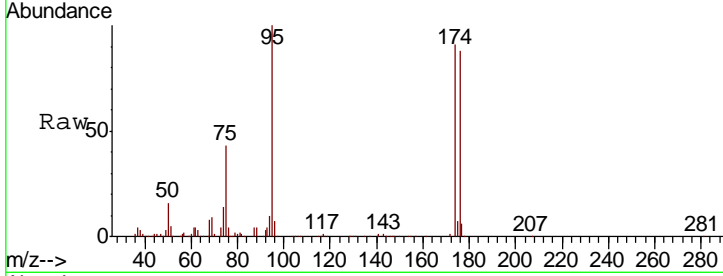




#60
 4-Bromofluorobenzene
 Concen: 23.464 ug/l
 RT: 11.92 min Scan# 3155
 Delta R.T. 0.00 min
 Lab File: VN057172.D
 Acq: 10 Aug 2019 13:27

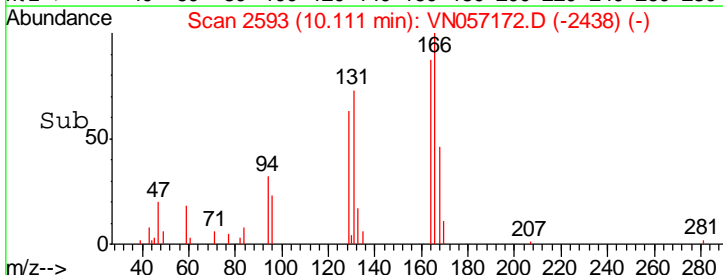
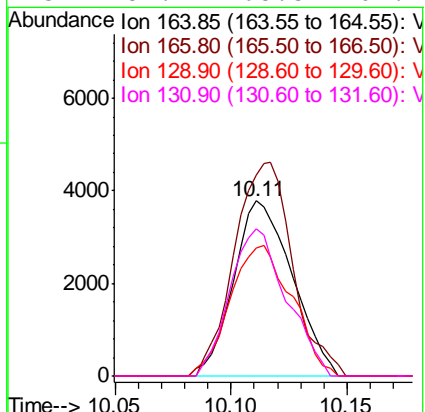
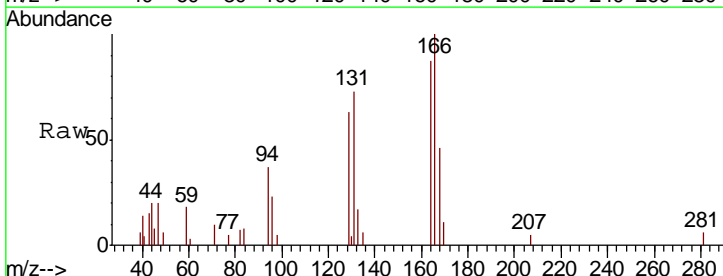
Instrument : MSVOA_N
 ClientSampled : DSN-002-SEWER-OUTLET-02

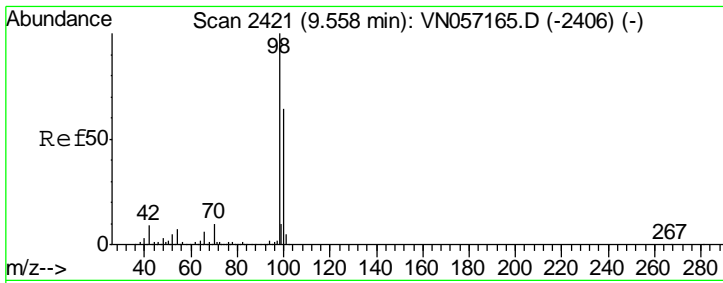
| Tgt Ion | Resp | Lower | Upper |
|---------|--------|-------|-------|
| 95 | 267593 | | |
| 174 | 94.2 | 74.9 | 112.3 |
| 176 | 91.8 | 72.1 | 108.1 |



#61
 Tetrachloroethene
 Concen: 0.568 ug/l
 RT: 10.11 min Scan# 2593
 Delta R.T. -0.00 min
 Lab File: VN057172.D
 Acq: 10 Aug 2019 13:27

| Tgt Ion | Resp | Lower | Upper |
|---------|-------|-------|-------|
| 164 | 6676 | | |
| 166 | 114.8 | 103.0 | 154.6 |
| 129 | 72.9 | 67.3 | 100.9 |
| 131 | 84.2 | 68.5 | 102.7 |

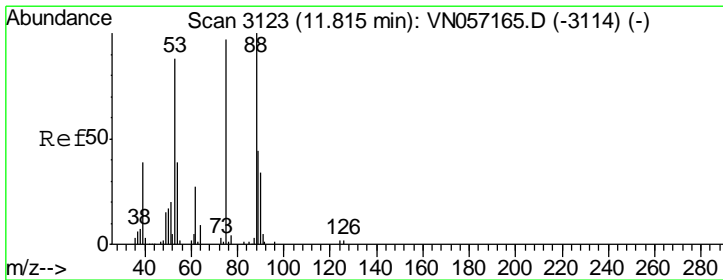
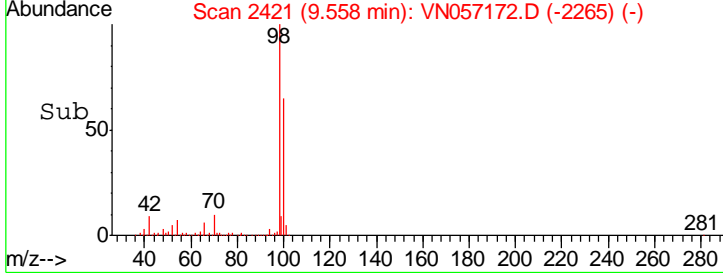
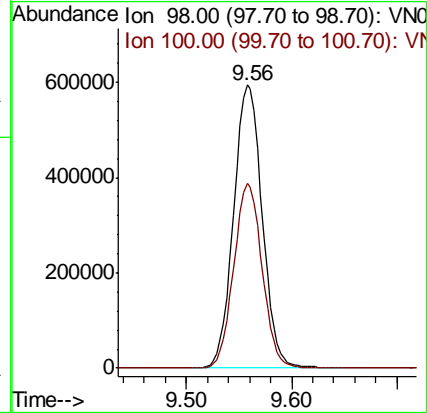
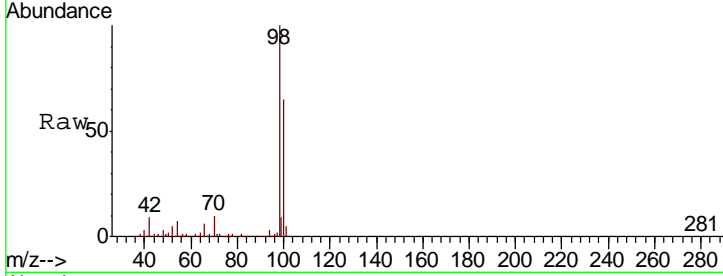




#63
 Toluene-d8
 Concen: 31.579 ug/l
 RT: 9.56 min Scan# 2421
 Delta R.T. 0.00 min
 Lab File: VN057172.D
 Acq: 10 Aug 2019 13:27

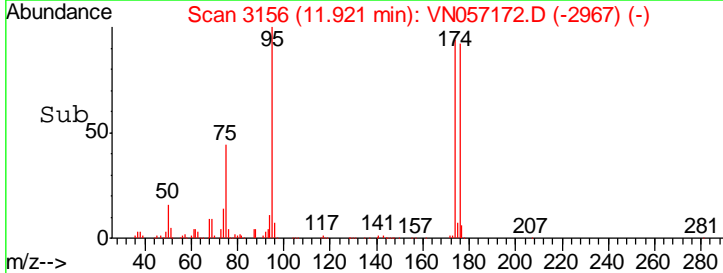
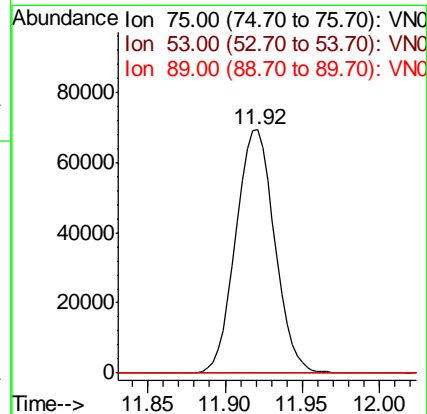
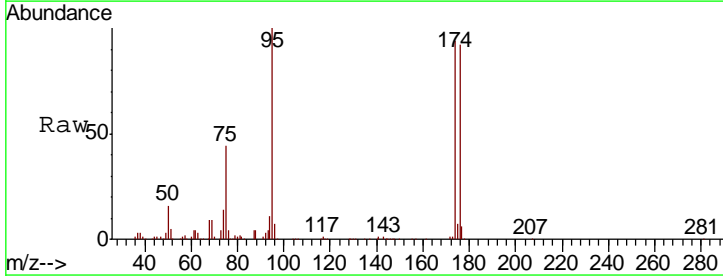
Instrument :
 MSVOA_N
ClientSampled :
 DSN-002-SEWER-OUTLET-02

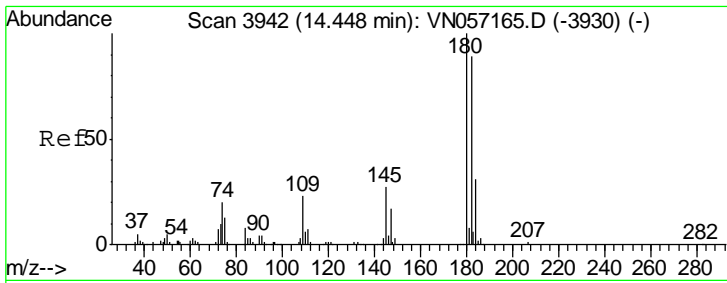
Tgt Ion: 98 Resp: 1116511
 Ion Ratio Lower Upper
 98 100
 100 64.7 52.4 78.6



#77
 t-1,4-Dichloro-2-butene
 Concen: 32.689 ug/l
 RT: 11.92 min Scan# 3156
 Delta R.T. 0.11 min
 Lab File: VN057172.D
 Acq: 10 Aug 2019 13:27

Tgt Ion: 75 Resp: 121471
 Ion Ratio Lower Upper
 75 100
 53 0.0 45.4 136.2#
 89 0.0 23.5 70.6#

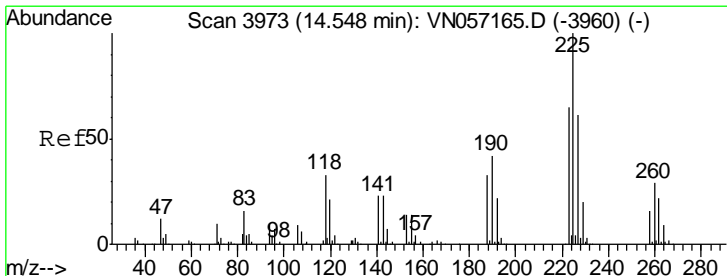
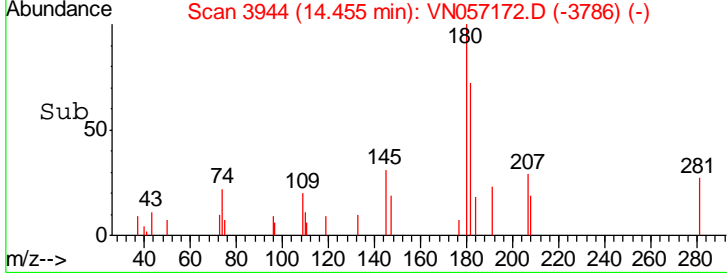
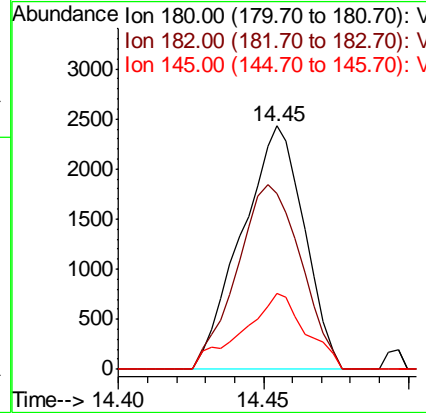
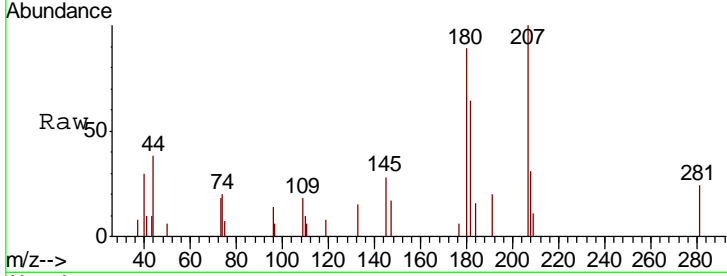




#89
 1,2,4-Trichlorobenzene
 Concen: 9.390 ug/l
 RT: 14.45 min Scan# 3944
 Delta R.T. 0.01 min
 Lab File: VN057172.D
 Acq: 10 Aug 2019 13:27

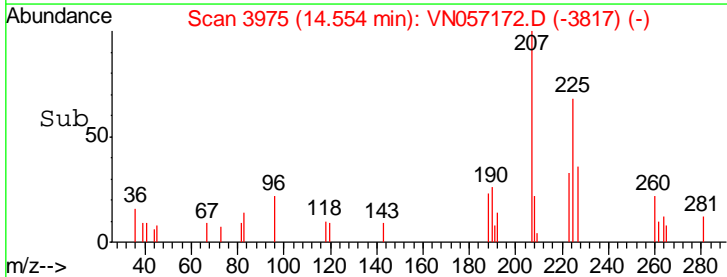
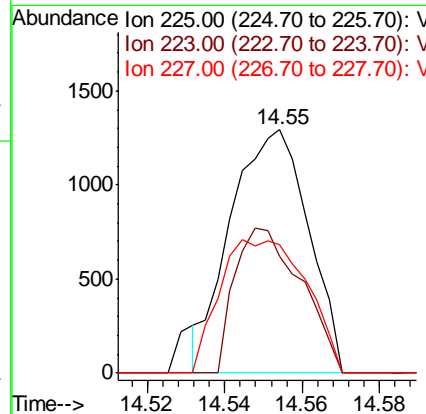
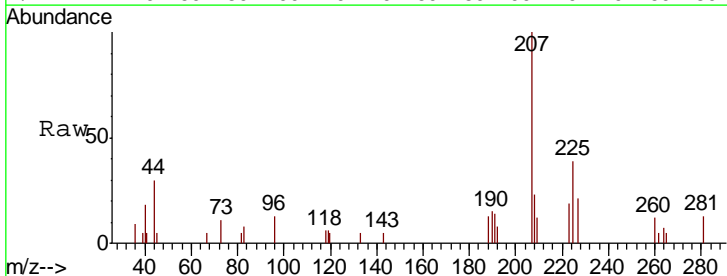
Instrument : MSVOA_N
 ClientSampled : DSN-002-SEWER-OUTLET-02

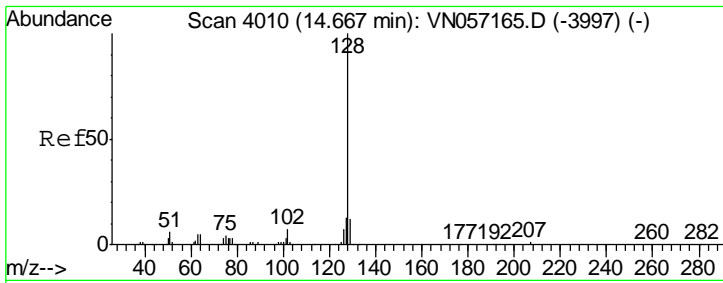
| Tgt Ion | Resp | Ion Ratio | Lower | Upper |
|---------|------|-----------|-------|-------|
| 180 | 3631 | 100 | | |
| 182 | 77.9 | 75.0 | 112.6 | |
| 145 | 28.1 | 21.7 | 32.5 | |



#90
 Hexachlorobutadiene
 Concen: 0.231 ug/l
 RT: 14.55 min Scan# 3975
 Delta R.T. 0.01 min
 Lab File: VN057172.D
 Acq: 10 Aug 2019 13:27

| Tgt Ion | Resp | Ion Ratio | Lower | Upper |
|---------|------|-----------|-------|-------|
| 225 | 1797 | 100 | | |
| 223 | 51.2 | 0.0 | 128.0 | |
| 227 | 28.6 | 0.0 | 125.6 | |

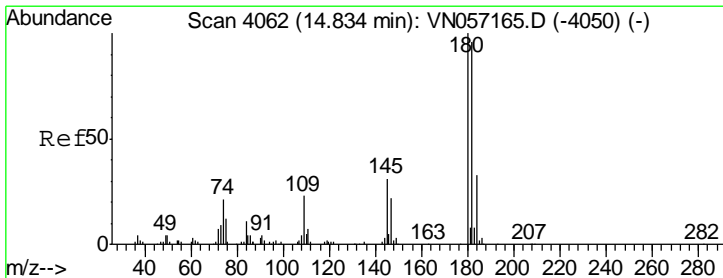
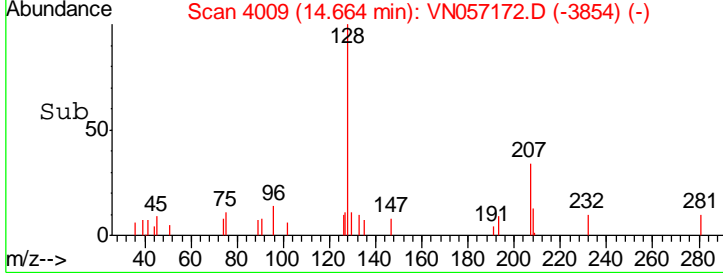
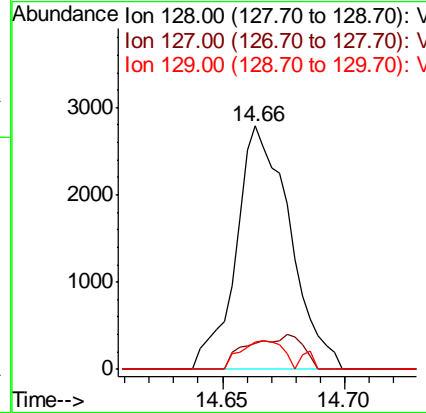
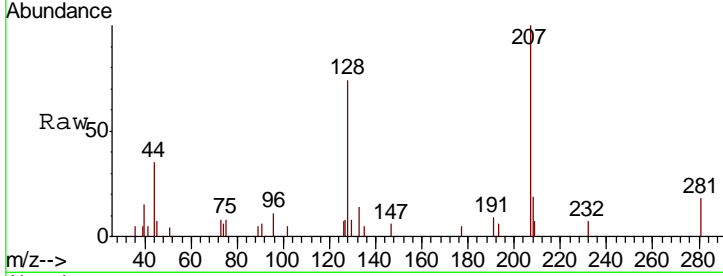




#91
 Naphthalene
 Concen: 0.312 ug/l
 RT: 14.66 min Scan# 4009
 Delta R.T. -0.00 min
 Lab File: VN057172.D
 Acq: 10 Aug 2019 13:27

Instrument : MSVOA_N
 ClientSampled : DSN-002-SEWER-OUTLET-02

| Tgt Ion | Resp | Lower | Upper |
|---------|------|-------|-------|
| 128 | 100 | | |
| 127 | 7.4 | 10.2 | 15.4# |
| 129 | 9.2 | 8.6 | 13.0 |



#92
 1,2,3-Trichlorobenzene
 Concen: 8.823 ug/l
 RT: 14.84 min Scan# 4063
 Delta R.T. 0.00 min
 Lab File: VN057172.D
 Acq: 10 Aug 2019 13:27

| Tgt Ion | Resp | Lower | Upper |
|---------|-------|-------|-------|
| 180 | 100 | | |
| 182 | 107.5 | 0.0 | 195.8 |
| 145 | 27.1 | 0.0 | 61.2 |

