

Data Path : Z:\voasrv\HPCHEM1\MSVOA_N\Data\VN081023\
 Data File : VN078826.D
 Acq On : 10 Aug 2023 10:23
 Operator : JC\MD
 Sample : VN0810WBL01
 Misc : 5.0mL/MSVOA_N/WATER
 ALS Vial : 3 Sample Multiplier: 1

Instrument :
 MSVOA_N
ClientSampleId :
 VN0810WBL01

Quant Time: Aug 10 23:46:47 2023
 Quant Method : Z:\voasrv\HPCHEM1\MSVOA_N\methods\82N080723W.M
 Quant Title : SW846 8260
 QLast Update : Tue Aug 08 05:03:52 2023
 Response via : Initial Calibration

Compound	R.T.	QIon	Response	Conc	Units	Dev(Min)
Internal Standards						
1) Pentafluorobenzene	8.236	168	164235	50.000	ug/l	0.00
34) 1,4-Difluorobenzene	9.106	114	308809	50.000	ug/l	0.00
63) Chlorobenzene-d5	11.871	117	261075	50.000	ug/l	0.00
72) 1,4-Dichlorobenzene-d4	13.794	152	69465	50.000	ug/l	0.00
System Monitoring Compounds						
33) 1,2-Dichloroethane-d4	8.588	65	128584	52.225	ug/l	0.00
Spiked Amount	50.000	Range	74 - 125	Recovery	=	104.440%
35) Dibromofluoromethane	8.177	113	105027	50.362	ug/l	0.00
Spiked Amount	50.000	Range	75 - 124	Recovery	=	100.720%
50) Toluene-d8	10.571	98	368274	47.988	ug/l	0.00
Spiked Amount	50.000	Range	86 - 113	Recovery	=	95.980%
62) 4-Bromofluorobenzene	12.859	95	96785	42.199	ug/l	0.00
Spiked Amount	50.000	Range	83 - 123	Recovery	=	84.400%

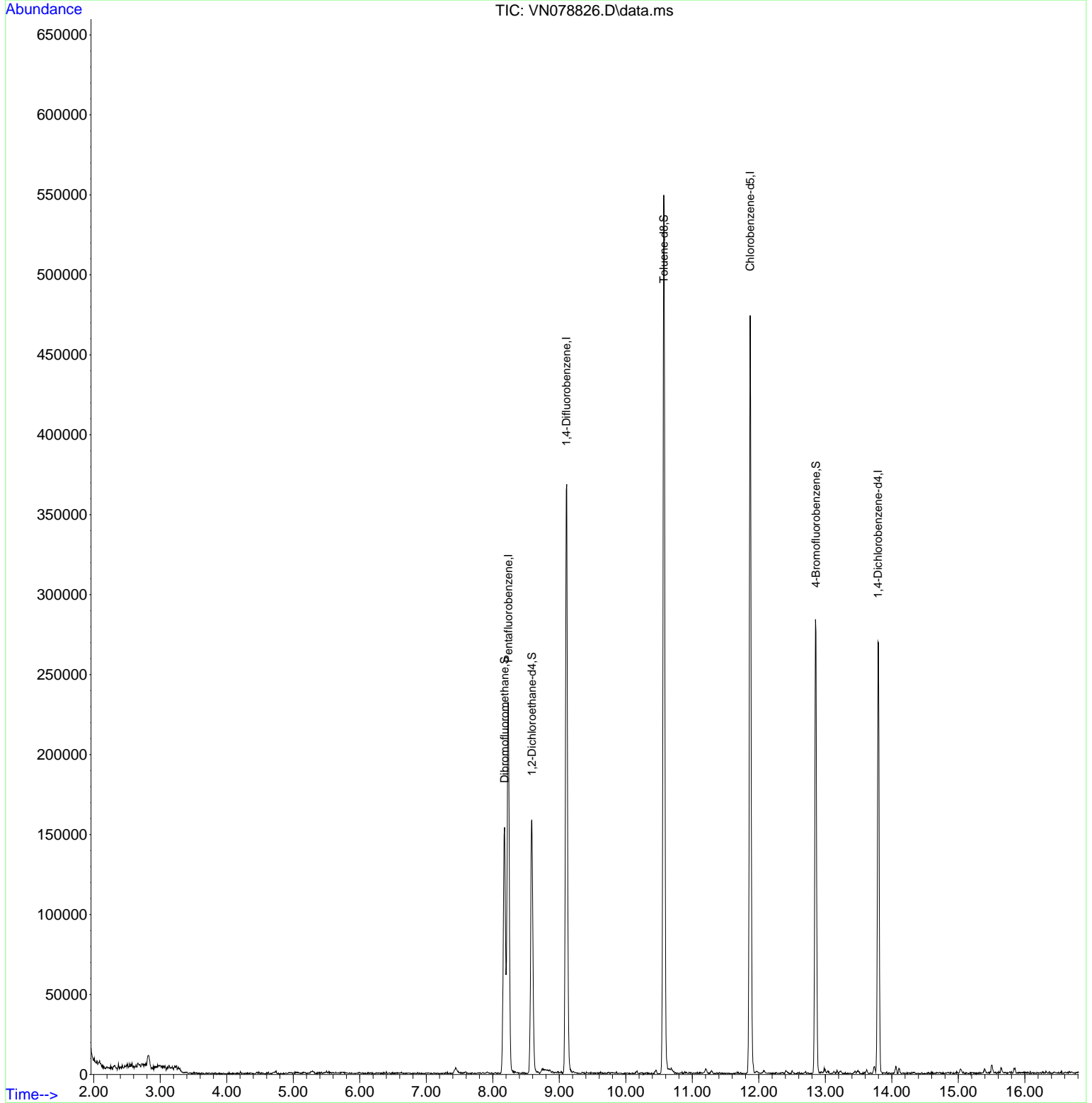
Target Compounds Qvalue

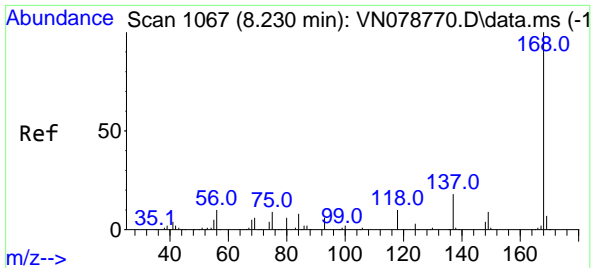
(#) = qualifier out of range (m) = manual integration (+) = signals summed

Data Path : Z:\voasrv\HPCHEM1\MSVOA_N\Data\VN081023\
 Data File : VN078826.D
 Acq On : 10 Aug 2023 10:23
 Operator : JC\MD
 Sample : VN0810WBL01
 Misc : 5.0mL/MSVOA_N/WATER
 ALS Vial : 3 Sample Multiplier: 1

Instrument :
 MSVOA_N
 ClientSampleId :
 VN0810WBL01

Quant Time: Aug 10 23:46:47 2023
 Quant Method : Z:\voasrv\HPCHEM1\MSVOA_N\methods\82N080723W.M
 Quant Title : SW846 8260
 QLast Update : Tue Aug 08 05:03:52 2023
 Response via : Initial Calibration

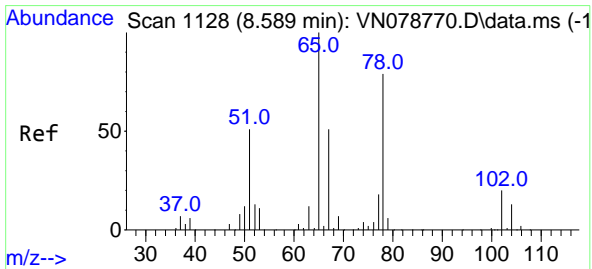
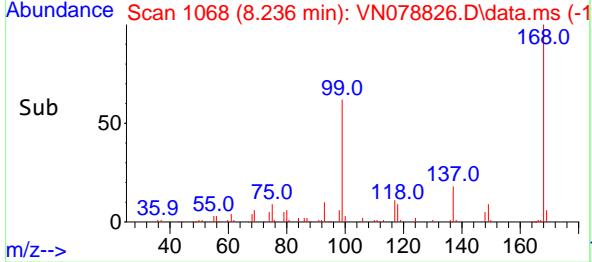
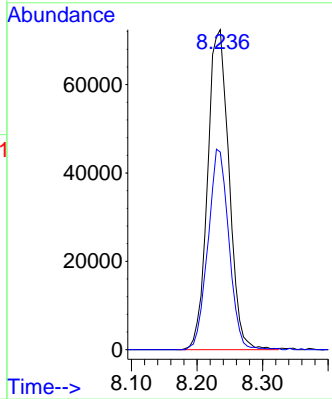
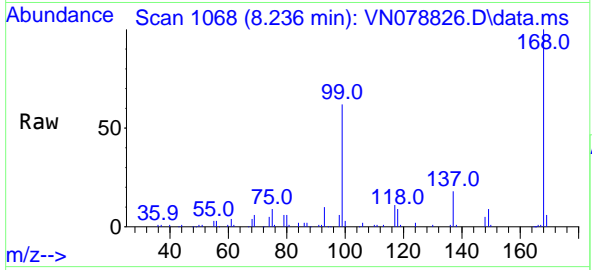




#1
 Pentafluorobenzene
 Concen: 50.000 ug/l
 RT: 8.236 min Scan# 1068
 Delta R.T. 0.005 min
 Lab File: VN078826.D
 Acq: 10 Aug 2023 10:23

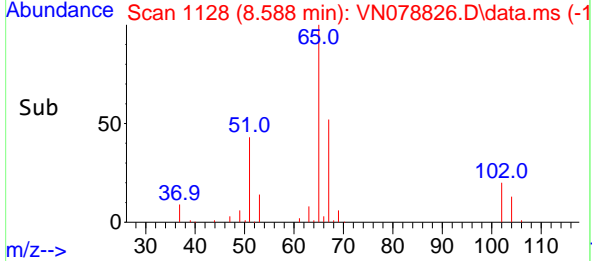
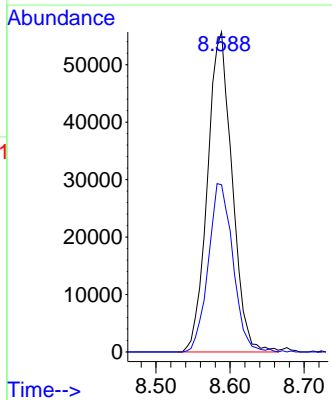
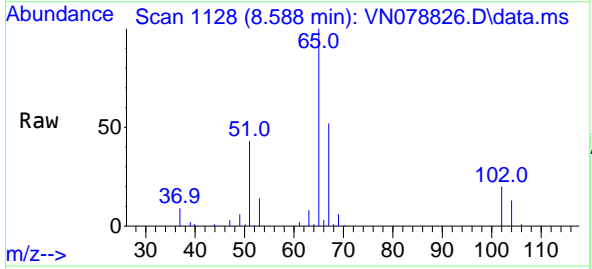
Instrument : MSVOA_N
 ClientSampleId : VN0810WBL01

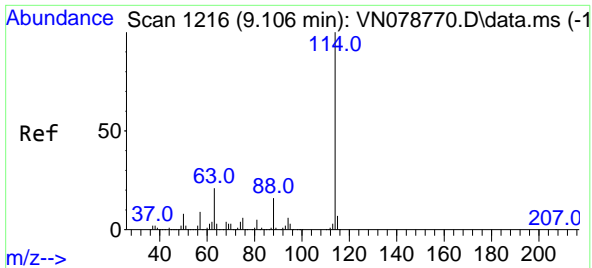
Tgt Ion:168 Resp: 164235
 Ion Ratio Lower Upper
 168 100
 99 61.8 53.0 79.6



#33
 1,2-Dichloroethane-d4
 Concen: 52.225 ug/l
 RT: 8.588 min Scan# 1128
 Delta R.T. -0.000 min
 Lab File: VN078826.D
 Acq: 10 Aug 2023 10:23

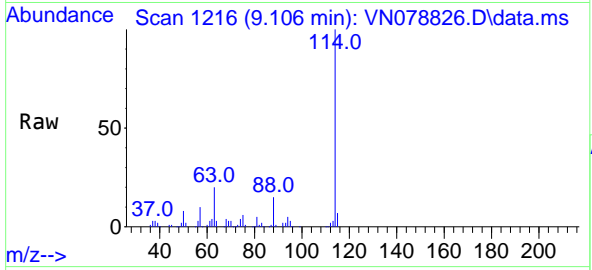
Tgt Ion: 65 Resp: 128584
 Ion Ratio Lower Upper
 65 100
 67 52.6 0.0 106.6





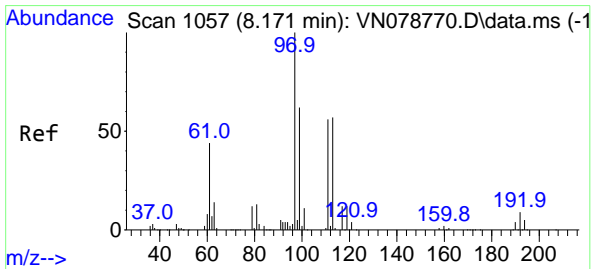
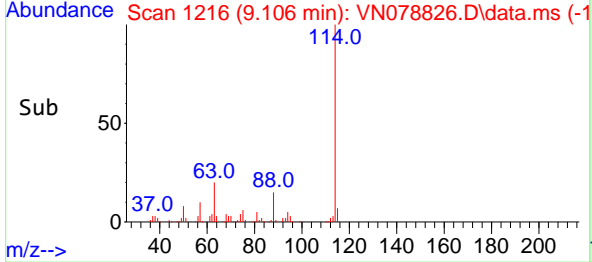
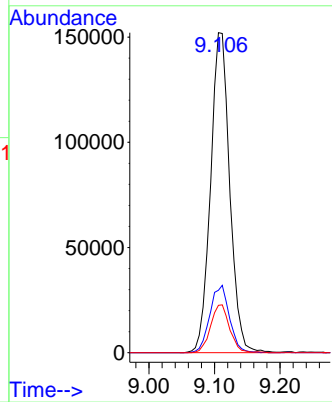
#34
 1,4-Difluorobenzene
 Concen: 50.000 ug/l
 RT: 9.106 min Scan# 11
 Delta R.T. -0.000 min
 Lab File: VN078826.D
 Acq: 10 Aug 2023 10:23

Instrument : MSVOA_N
 ClientSampleId : VN0810WBL01

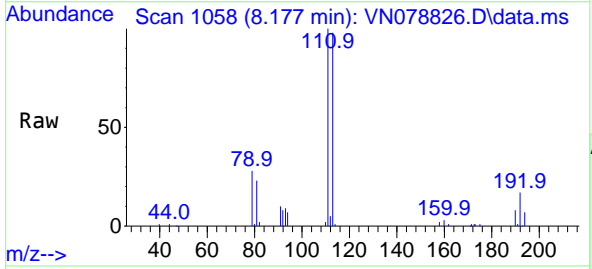


Tgt Ion:114 Resp: 308809

Ion	Ratio	Lower	Upper
114	100		
63	19.5	0.0	36.4
88	14.8	0.0	30.6

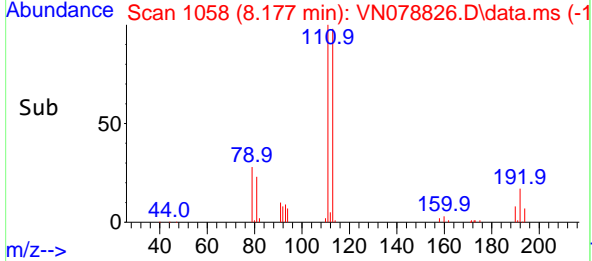
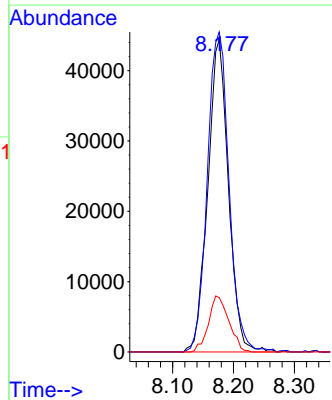


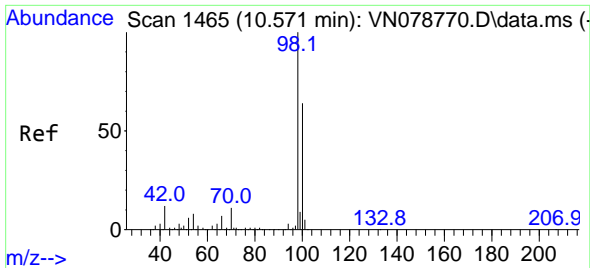
#35
 Dibromofluoromethane
 Concen: 50.362 ug/l
 RT: 8.177 min Scan# 1058
 Delta R.T. 0.006 min
 Lab File: VN078826.D
 Acq: 10 Aug 2023 10:23



Tgt Ion:113 Resp: 105027

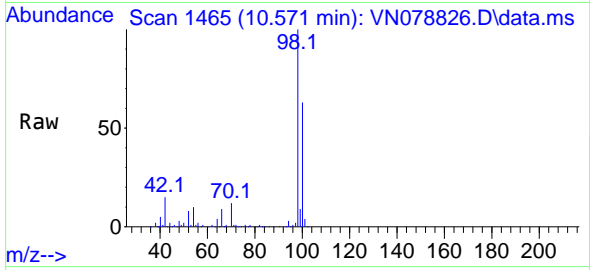
Ion	Ratio	Lower	Upper
113	100		
111	106.8	82.6	123.8
192	17.7	12.7	19.1



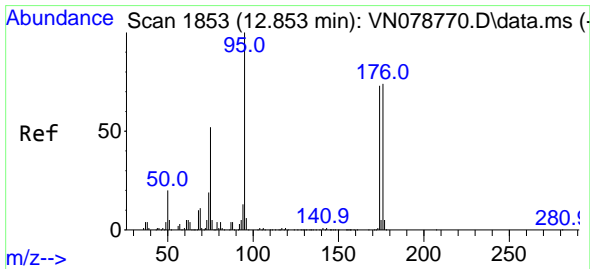
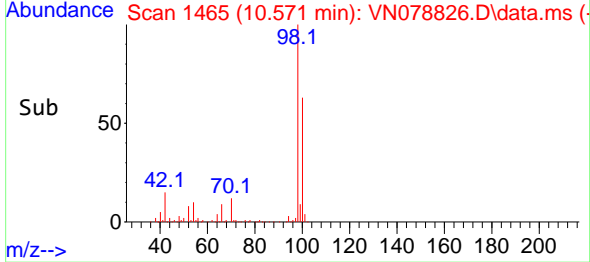
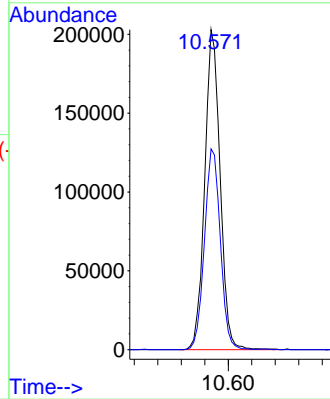


#50
 Toluene-d8
 Concen: 47.988 ug/l
 RT: 10.571 min Scan# 1465
 Delta R.T. -0.000 min
 Lab File: VN078826.D
 Acq: 10 Aug 2023 10:23

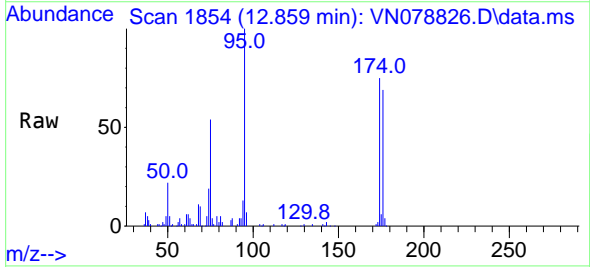
Instrument : MSVOA_N
 ClientSampleId : VN0810WBL01



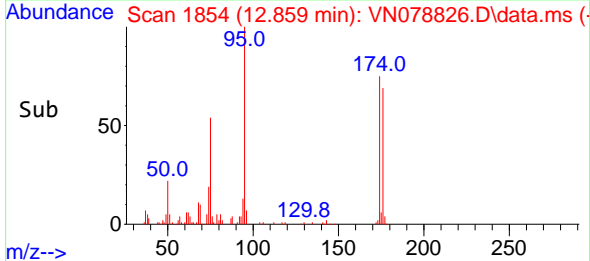
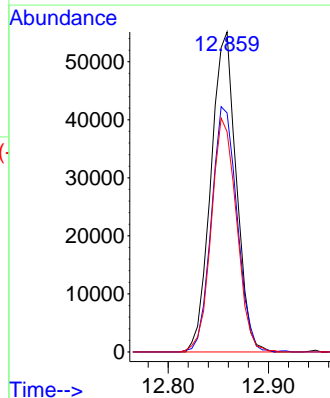
Tgt Ion: 98 Resp: 368274
 Ion Ratio Lower Upper
 98 100
 100 64.7 52.0 78.0

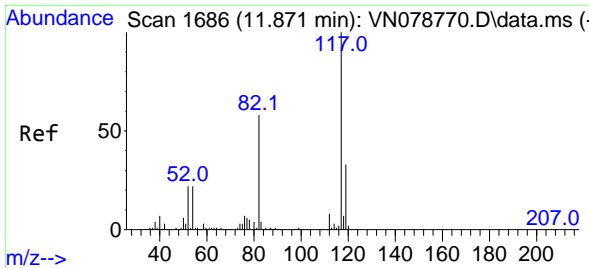


#62
 4-Bromofluorobenzene
 Concen: 42.199 ug/l
 RT: 12.859 min Scan# 1854
 Delta R.T. 0.006 min
 Lab File: VN078826.D
 Acq: 10 Aug 2023 10:23



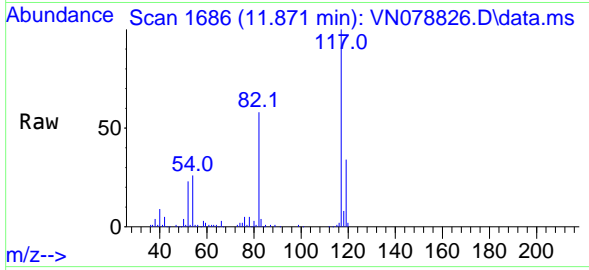
Tgt Ion: 95 Resp: 96785
 Ion Ratio Lower Upper
 95 100
 174 77.8 0.0 143.8
 176 72.8 0.0 135.8



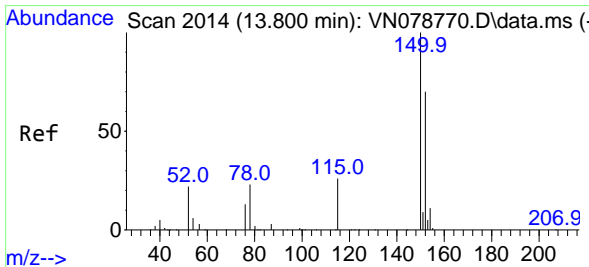
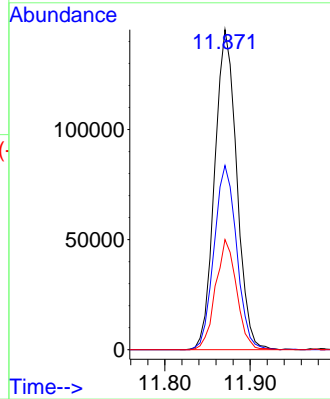
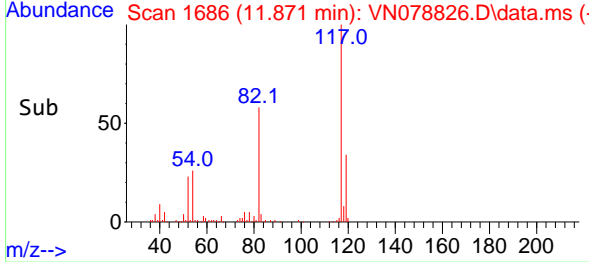


#63
 Chlorobenzene-d5
 Concen: 50.000 ug/l
 RT: 11.871 min Scan# 1
 Delta R.T. -0.000 min
 Lab File: VN078826.D
 Acq: 10 Aug 2023 10:23

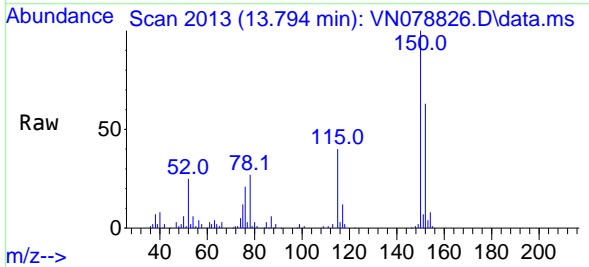
Instrument :
 MSVOA_N
 ClientSampleId :
 VN0810WBL01



Tgt Ion:117 Resp: 261075
 Ion Ratio Lower Upper
 117 100
 82 57.6 44.0 66.0
 119 34.4 25.6 38.4



#72
 1,4-Dichlorobenzene-d4
 Concen: 50.000 ug/l
 RT: 13.794 min Scan# 2013
 Delta R.T. -0.006 min
 Lab File: VN078826.D
 Acq: 10 Aug 2023 10:23



Tgt Ion:152 Resp: 69465
 Ion Ratio Lower Upper
 152 100
 115 60.3 32.3 96.8
 150 156.9 0.0 355.8

