

Data Path : Z:\voasrv\HPCHEM1\MSVOA_N\Data\VN081121\
 Data File : VN068069.D
 Acq On : 11 Aug 2021 13:41
 Operator : JC/MD
 Sample : M3343-10
 Misc : 5.00mL/MSVOA_N/WATER
 ALS Vial : 8 Sample Multiplier: 1

Instrument :
 MSVOA_N
 ClientSampleId :
 SPLP-AMENDED-COM-5

Quant Time: Aug 12 07:11:56 2021
 Quant Method : Z:\voasrv\HPCHEM1\MSVOA_N\methods\82N072921W.M
 Quant Title : SW846 8260
 QLast Update : Thu Jul 29 15:02:35 2021
 Response via : Initial Calibration

Compound	R.T.	QIon	Response	Conc	Units	Dev(Min)

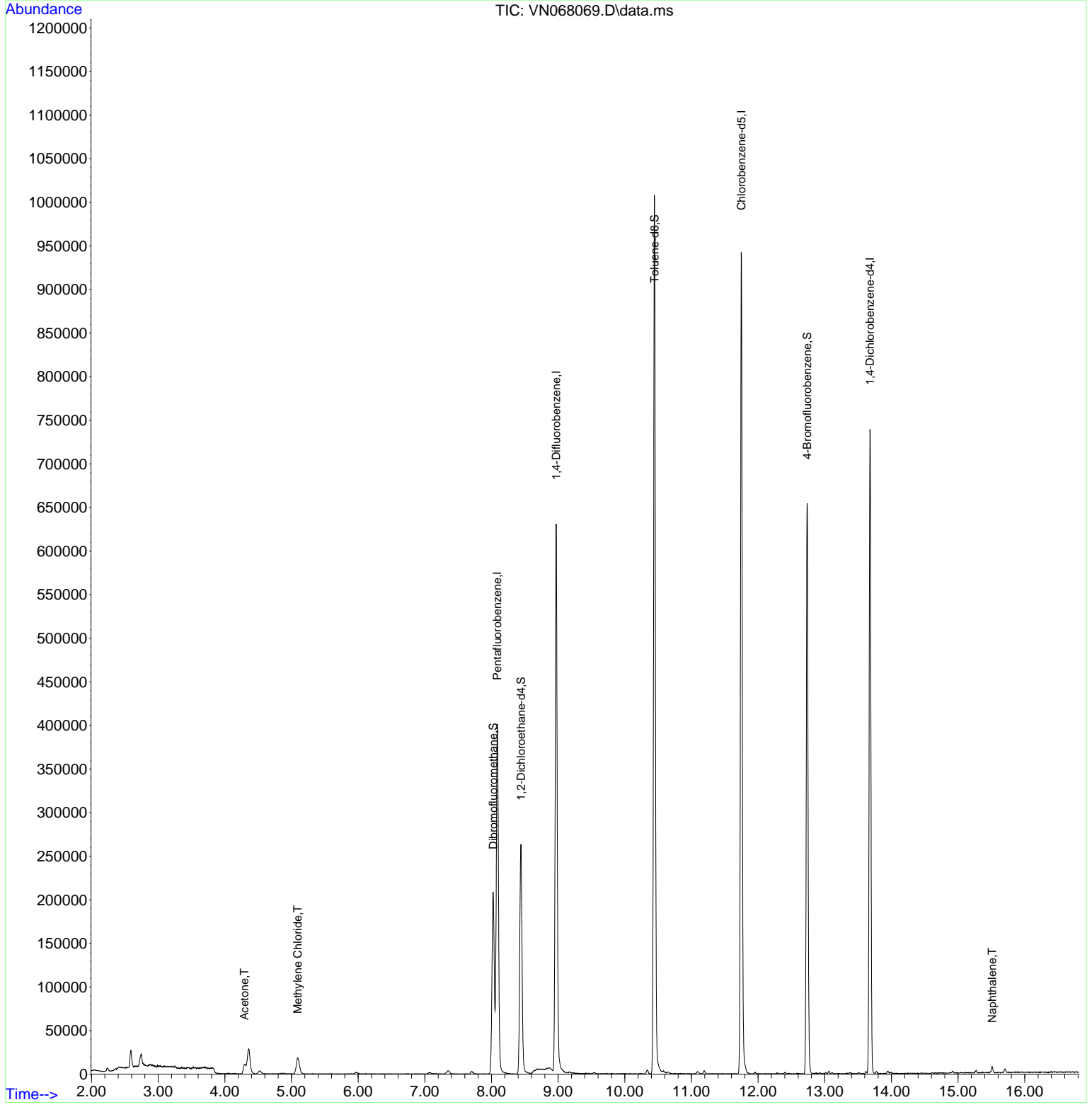
Internal Standards						
1) Pentafluorobenzene	8.088	168	290261	50.000	ug/l	# 0.00
34) 1,4-Difluorobenzene	8.971	114	551461	50.000	ug/l	0.00
63) Chlorobenzene-d5	11.749	117	558275	50.000	ug/l	0.00
72) 1,4-Dichlorobenzene-d4	13.678	152	195771	50.000	ug/l	0.00
System Monitoring Compounds						
33) 1,2-Dichloroethane-d4	8.442	65	228085	55.507	ug/l	0.00
Spiked Amount	50.000	Range 61 - 141	Recovery	=	111.020%	
35) Dibromofluoromethane	8.027	113	157511	49.010	ug/l	0.00
Spiked Amount	50.000	Range 69 - 133	Recovery	=	98.020%	
50) Toluene-d8	10.446	98	712965	48.218	ug/l	0.00
Spiked Amount	50.000	Range 65 - 126	Recovery	=	96.440%	
62) 4-Bromofluorobenzene	12.736	95	232249	43.498	ug/l	0.00
Spiked Amount	50.000	Range 58 - 135	Recovery	=	87.000%	
Target Compounds						
						Qvalue
16) Acetone	4.293	43	20775	13.856	ug/l	95
20) Methylene Chloride	5.093	84	15204	4.131	ug/l	87
95) Naphthalene	15.512	128	6097	3.820	ug/l #	88

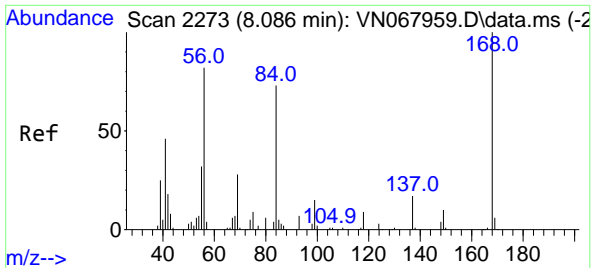
(#) = qualifier out of range (m) = manual integration (+) = signals summed

Data Path : Z:\voasrv\HPCHEM1\MSVOA_N\Data\VN081121\
 Data File : VN068069.D
 Acq On : 11 Aug 2021 13:41
 Operator : JC/MD
 Sample : M3343-10
 Misc : 5.00mL/MSVOA_N/WATER
 ALS Vial : 8 Sample Multiplier: 1

Instrument :
 MSVOA_N
ClientSampleId :
 SPLP-AMENDED-COM-5

Quant Time: Aug 12 07:11:56 2021
 Quant Method : Z:\voasrv\HPCHEM1\MSVOA_N\methods\82N072921W.M
 Quant Title : SW846 8260
 QLast Update : Thu Jul 29 15:02:35 2021
 Response via : Initial Calibration

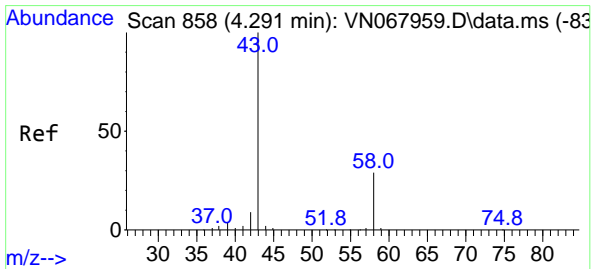
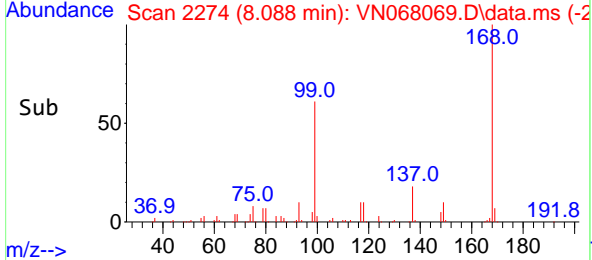
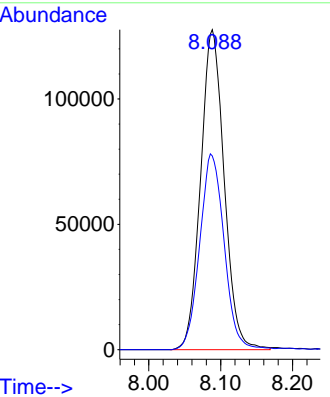
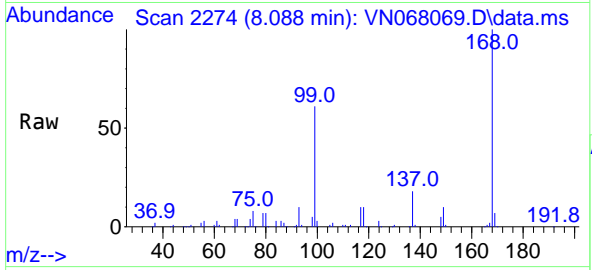




#1
 Pentafluorobenzene
 Concen: 50.000 ug/l
 RT: 8.088 min Scan# 2274
 Delta R.T. 0.002 min
 Lab File: VN068069.D
 Acq: 11 Aug 2021 13:41

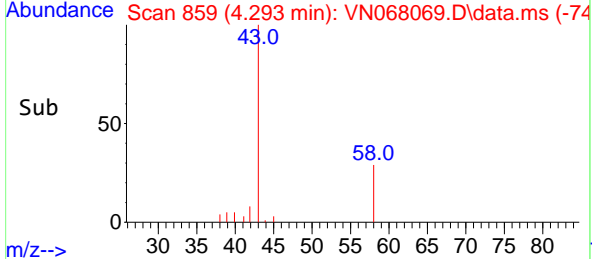
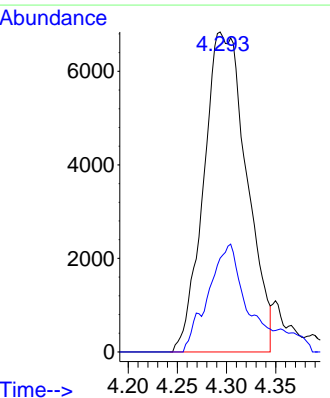
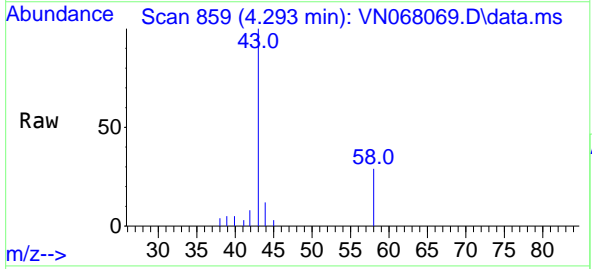
Instrument :
 MSVOA_N
ClientSampled :
 SPLP-AMENDED-COM-5

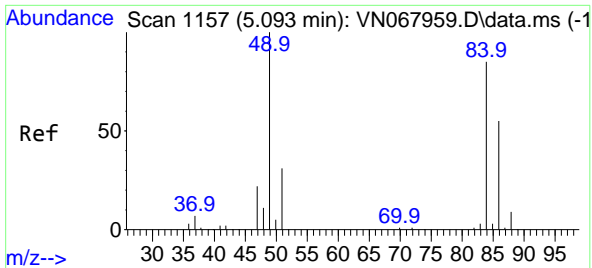
Tgt Ion:168 Resp: 290261
 Ion Ratio Lower Upper
 168 100
 99 60.6 62.9 94.3#



#16
 Acetone
 Concen: 13.856 ug/l
 RT: 4.293 min Scan# 859
 Delta R.T. 0.002 min
 Lab File: VN068069.D
 Acq: 11 Aug 2021 13:41

Tgt Ion: 43 Resp: 20775
 Ion Ratio Lower Upper
 43 100
 58 29.3 21.2 31.8



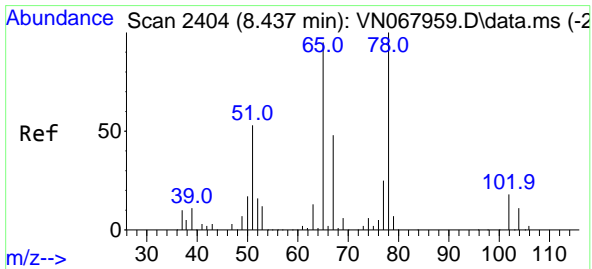
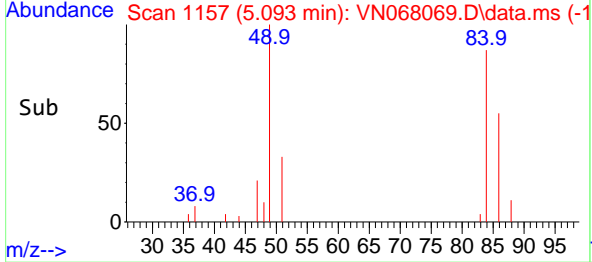
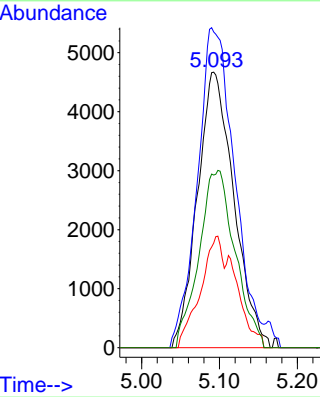
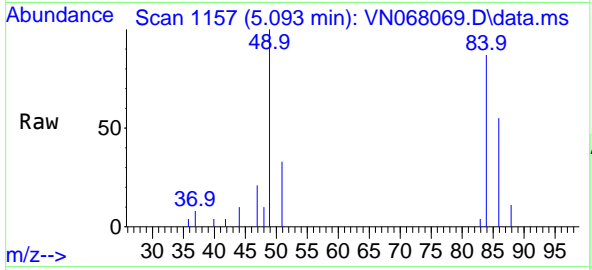


#20
 Methylene Chloride
 Concen: 4.131 ug/l
 RT: 5.093 min Scan# 1157
 Delta R.T. -0.000 min
 Lab File: VN068069.D
 Acq: 11 Aug 2021 13:41

Instrument :
 MSVOA_N
ClientSampled :
 SPLP-AMENDED-COM-5

Tgt Ion: 84 Resp: 15204

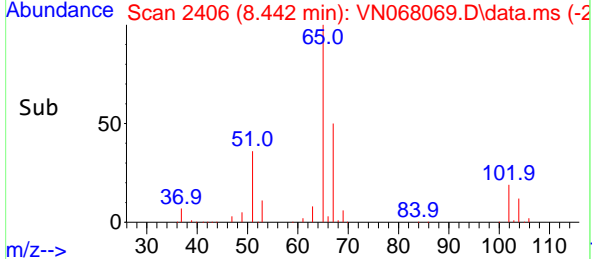
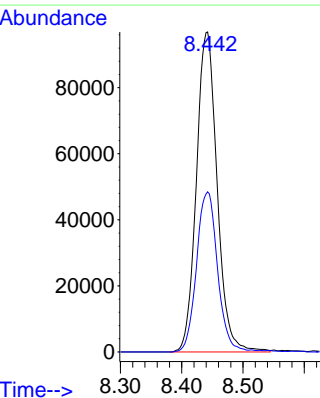
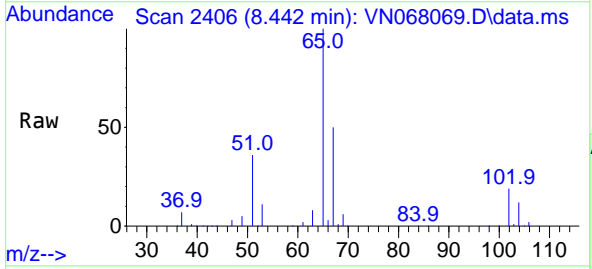
Ion	Ratio	Lower	Upper
84	100		
49	114.6	110.9	166.3
51	38.0	32.6	49.0
86	62.6	51.6	77.4

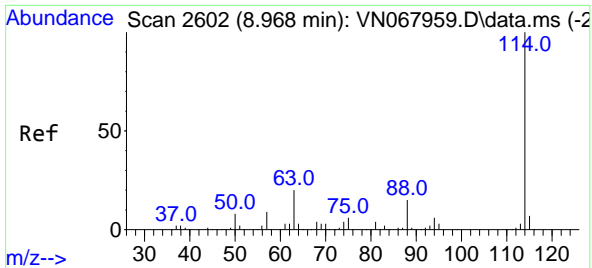


#33
 1,2-Dichloroethane-d4
 Concen: 55.507 ug/l
 RT: 8.442 min Scan# 2406
 Delta R.T. 0.005 min
 Lab File: VN068069.D
 Acq: 11 Aug 2021 13:41

Tgt Ion: 65 Resp: 228085

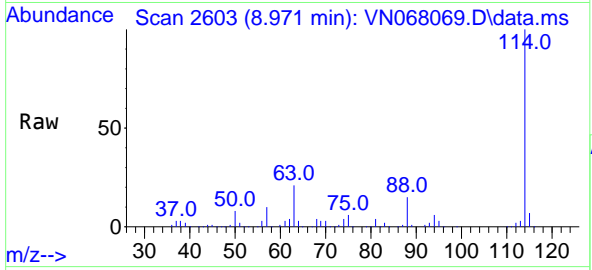
Ion	Ratio	Lower	Upper
65	100		
67	50.5	0.0	98.6





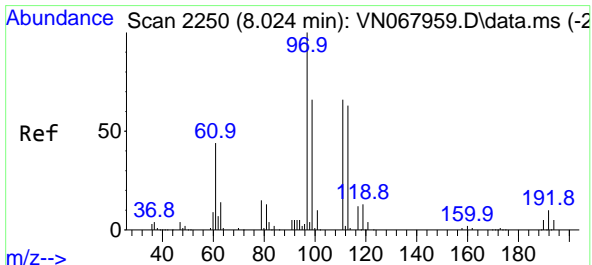
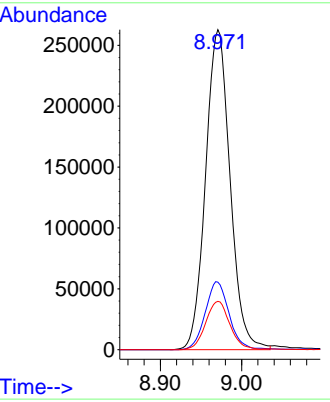
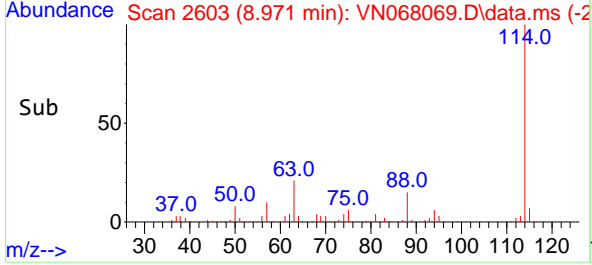
#34
 1,4-Difluorobenzene
 Concen: 50.000 ug/l
 RT: 8.971 min Scan# 2603
 Delta R.T. 0.003 min
 Lab File: VN068069.D
 Acq: 11 Aug 2021 13:41

Instrument :
 MSVOA_N
ClientSampled :
 SPLP-AMENDED-COM-5

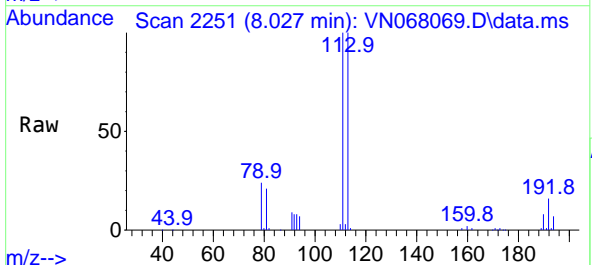


Tgt Ion:114 Resp: 551461

Ion	Ratio	Lower	Upper
114	100		
63	21.1	0.0	49.0
88	15.1	0.0	36.6

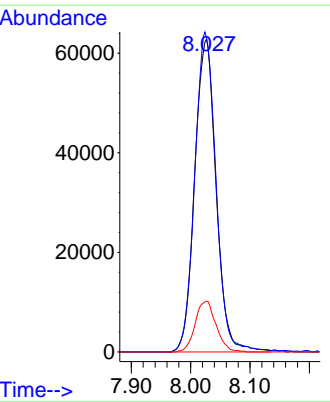
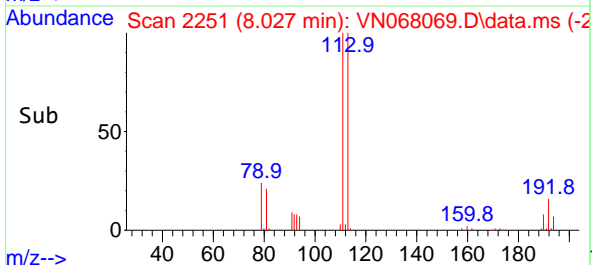


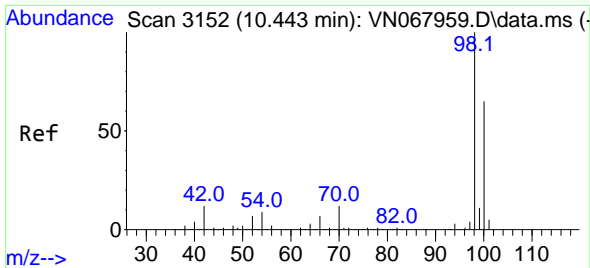
#35
 Dibromofluoromethane
 Concen: 49.010 ug/l
 RT: 8.027 min Scan# 2251
 Delta R.T. 0.003 min
 Lab File: VN068069.D
 Acq: 11 Aug 2021 13:41



Tgt Ion:113 Resp: 157511

Ion	Ratio	Lower	Upper
113	100		
111	101.1	83.8	125.8
192	15.9	13.4	20.0

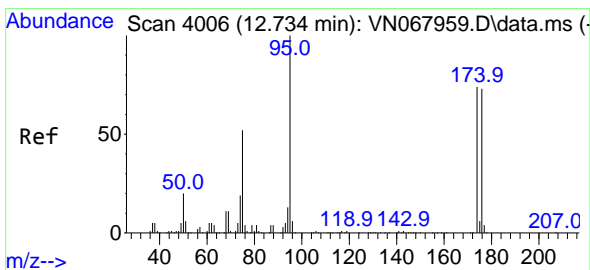
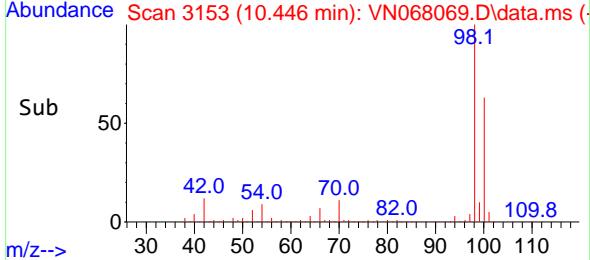
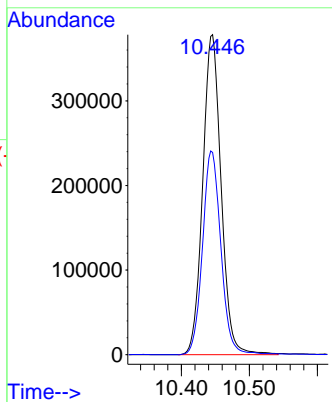
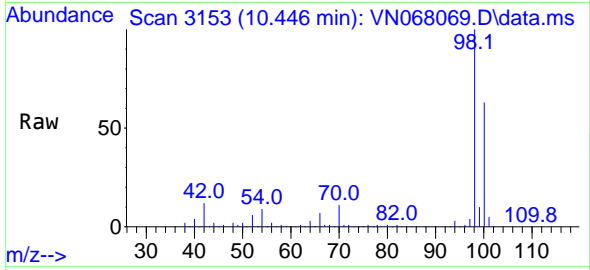




#50
 Toluene-d8
 Concen: 48.218 ug/l
 RT: 10.446 min Scan# 3153
 Delta R.T. 0.003 min
 Lab File: VN068069.D
 Acq: 11 Aug 2021 13:41

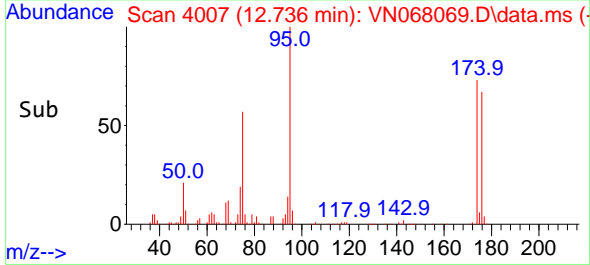
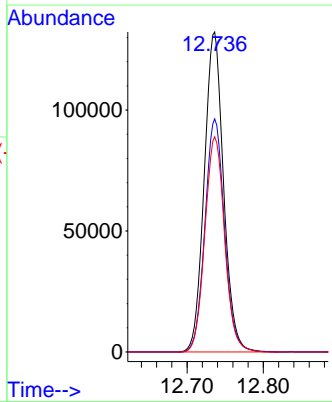
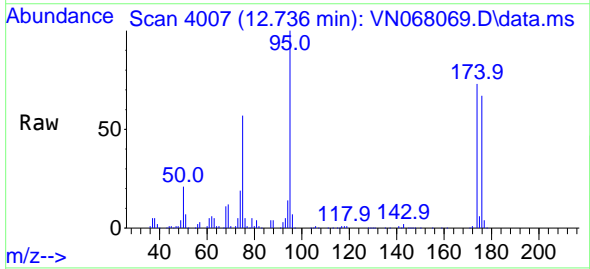
Instrument :
 MSVOA_N
ClientSampled :
 SPLP-AMENDED-COM-5

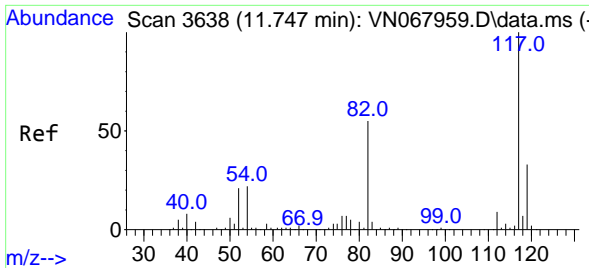
Tgt Ion: 98 Resp: 712965
 Ion Ratio Lower Upper
 98 100
 100 63.6 51.7 77.5



#62
 4-Bromofluorobenzene
 Concen: 43.498 ug/l
 RT: 12.736 min Scan# 4007
 Delta R.T. 0.002 min
 Lab File: VN068069.D
 Acq: 11 Aug 2021 13:41

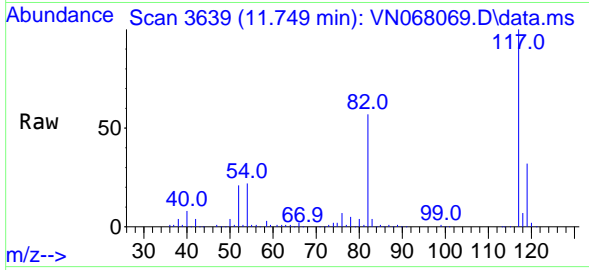
Tgt Ion: 95 Resp: 232249
 Ion Ratio Lower Upper
 95 100
 174 73.9 0.0 122.0
 176 68.7 0.0 117.6



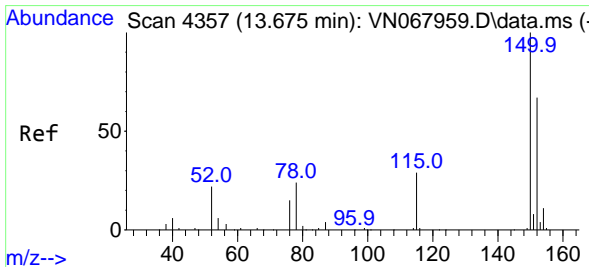
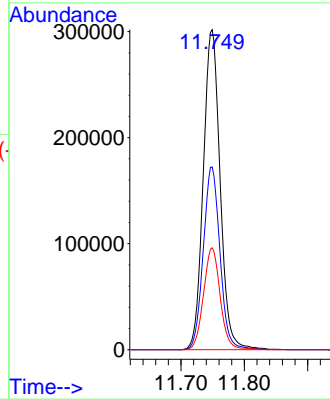
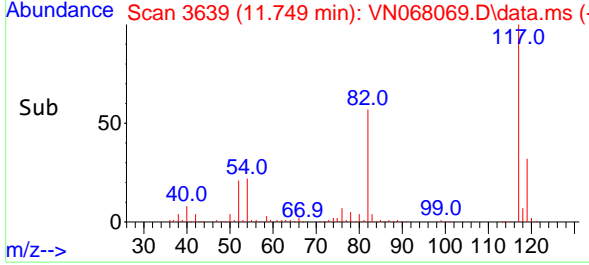


#63
 Chlorobenzene-d5
 Concen: 50.000 ug/l
 RT: 11.749 min Scan# 3639
 Delta R.T. 0.002 min
 Lab File: VN068069.D
 Acq: 11 Aug 2021 13:41

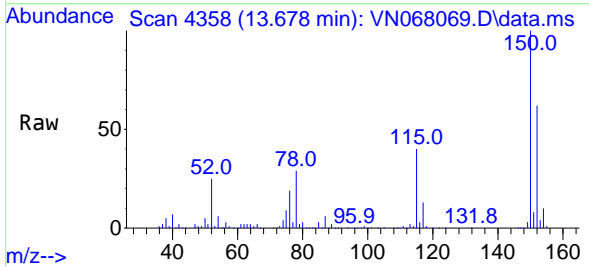
Instrument :
 MSVOA_N
ClientSampled :
 SPLP-AMENDED-COM-5



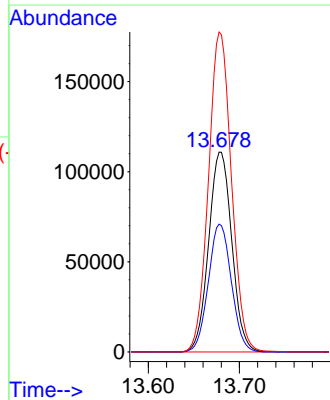
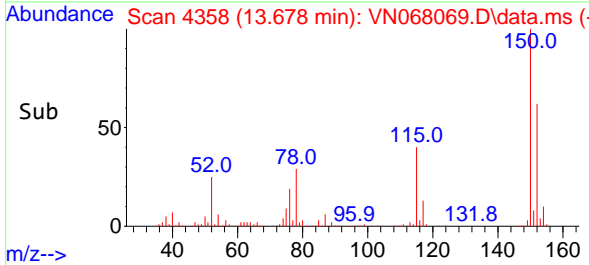
Tgt Ion:117 Resp: 558275
 Ion Ratio Lower Upper
 117 100
 82 57.1 53.1 79.7
 119 31.9 25.5 38.3

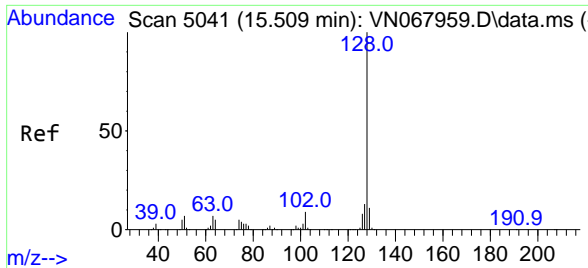


#72
 1,4-Dichlorobenzene-d4
 Concen: 50.000 ug/l
 RT: 13.678 min Scan# 4358
 Delta R.T. 0.003 min
 Lab File: VN068069.D
 Acq: 11 Aug 2021 13:41



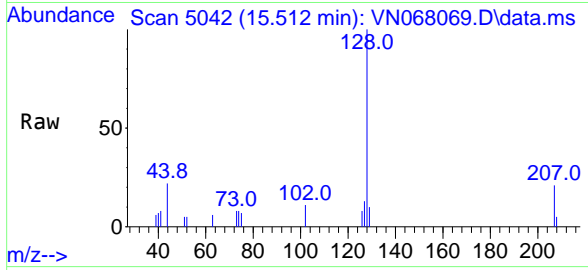
Tgt Ion:152 Resp: 195771
 Ion Ratio Lower Upper
 152 100
 115 63.5 36.1 108.5
 150 158.7 0.0 351.8





#95
 Naphthalene
 Concen: 3.820 ug/l
 RT: 15.512 min Scan# 5042
 Delta R.T. 0.003 min
 Lab File: VN068069.D
 Acq: 11 Aug 2021 13:41

Instrument :
 MSVOA_N
ClientSampled :
 SPLP-AMENDED-COM-5



Tgt Ion:128 Resp: 6097

Ion	Ratio	Lower	Upper
128	100		
127	8.3	10.6	15.8#
129	5.9	8.6	12.8#

