

Data Path : Z:\voasrv\HPCHEM1\MSVOA\_N\Data\VN081221\  
 Data File : VN068096.D  
 Acq On : 12 Aug 2021 17:54  
 Operator : JC/MD  
 Sample : M3361-10 50X  
 Misc : 5.00mL/MSVOA\_N/WATER  
 ALS Vial : 16 Sample Multiplier: 1

Instrument :  
 MSVOA\_N  
 ClientSampled :  
 41912

Integration Parameters: RTEINT.P  
 Integrator: RTE  
 Smoothing : ON Filtering: 5  
 Sampling : 1 Min Area: 3 % of largest Peak  
 Start Thrs: 0.2 Max Peaks: 100  
 Stop Thrs : 0 Peak Location: TOP

If leading or trailing edge < 100 prefer < Baseline drop else tangent >  
 Peak separation: 5

Method : Z:\voasrv\HPCHEM1\MSVOA\_N\methods\82N072921W.M  
 Title : SW846 8260

Signal : TIC: VN068096.D\data.ms

peak #	R.T. min	first scan	max scan	last scan	PK TY	peak height	corr. area	corr. % max.	% of total
1	2.749	267	283	284	rBV2	22185	34925	1.78%	0.364%
2	8.024	2227	2250	2261	rBV3	239778	577919	29.43%	6.025%
3	8.088	2262	2274	2297	rVB	400410	916745	46.69%	9.558%
4	8.440	2384	2405	2432	rBV	269548	626162	31.89%	6.528%
5	8.971	2584	2603	2631	rBV	644960	1341361	68.31%	13.985%
6	10.443	3133	3152	3190	rBV	1039594	1963674	100.00%	20.473%
7	11.747	3621	3638	3672	rBV	939610	1728545	88.03%	18.021%
8	12.734	3990	4006	4033	rBV2	644929	1157530	58.95%	12.068%
9	13.678	4340	4358	4380	rBV	710095	1244745	63.39%	12.977%

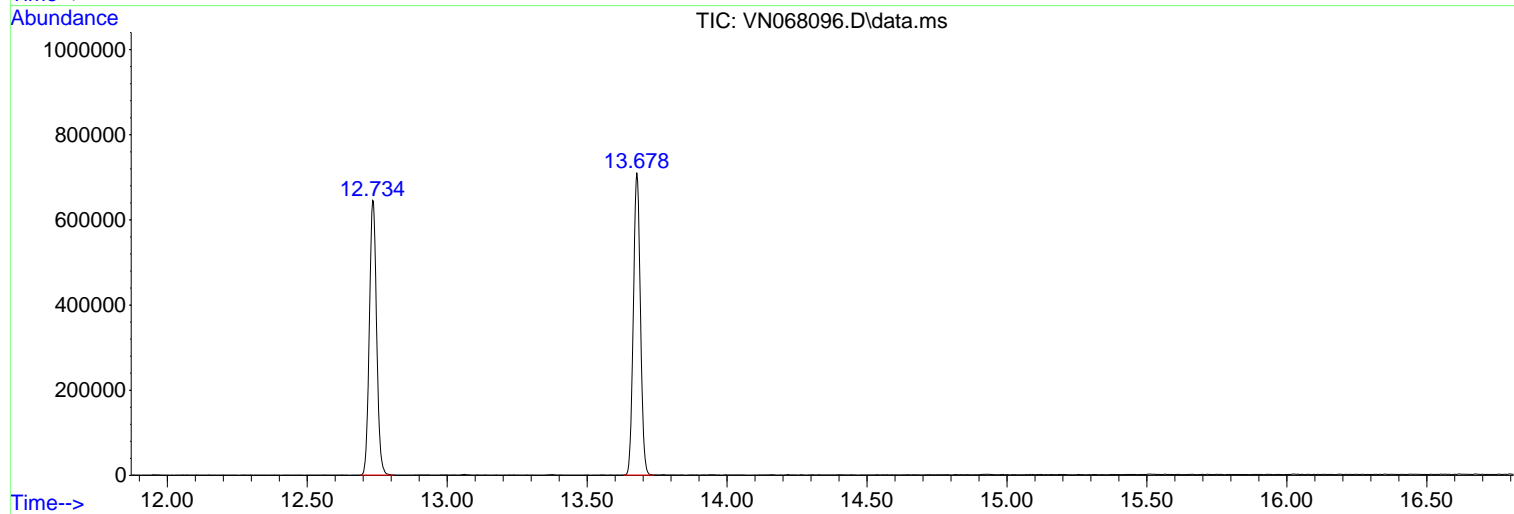
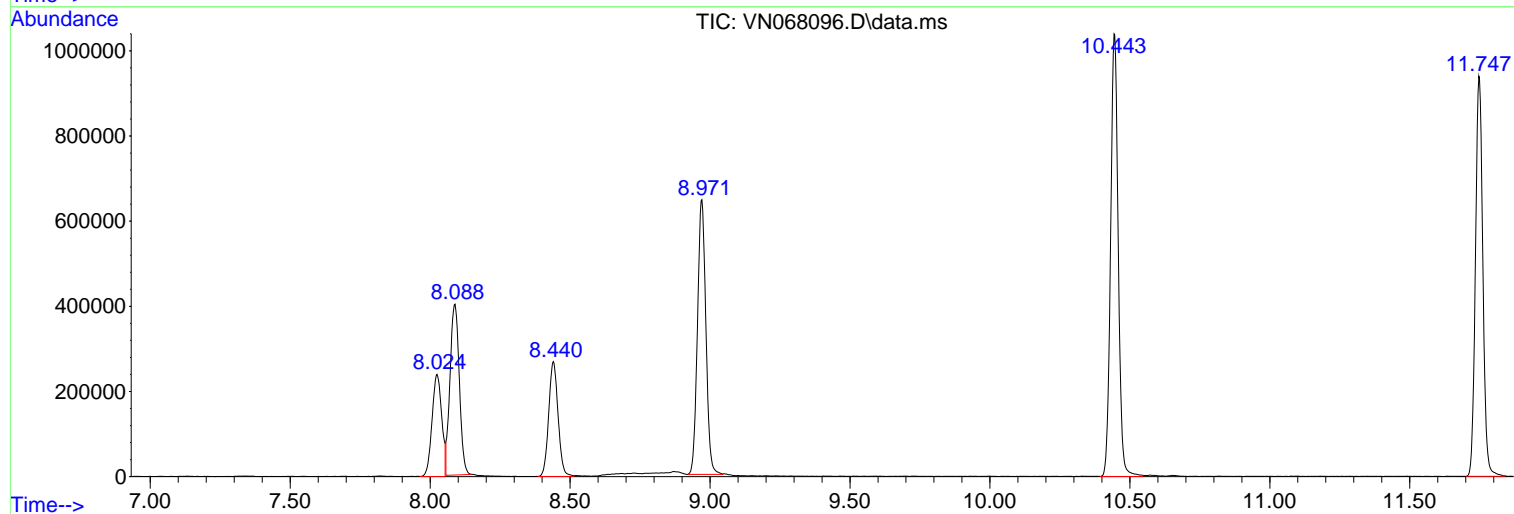
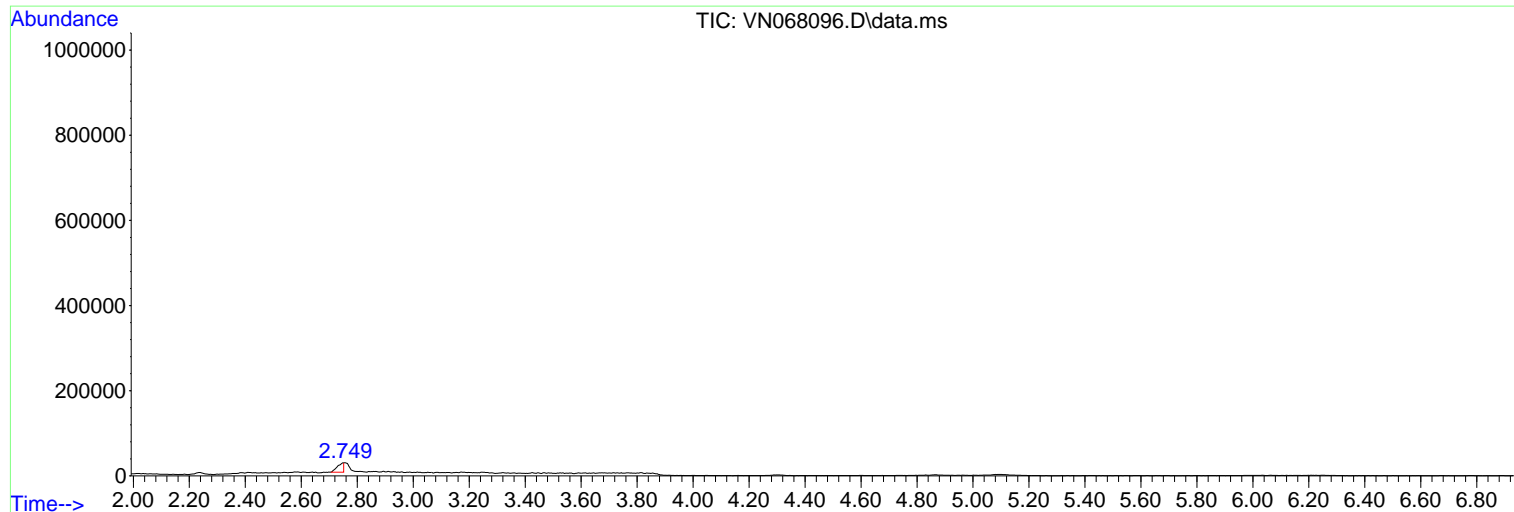
Sum of corrected areas: 9591606

Data Path : Z:\voasrv\HPCHEM1\MSVOA\_N\Data\VN081221\  
Data File : VN068096.D  
Acq On : 12 Aug 2021 17:54  
Operator : JC/MD  
Sample : M3361-10 50X  
Misc : 5.00mL/MSVOA\_N/WATER  
ALS Vial : 16 Sample Multiplier: 1

Instrument :  
MSVOA\_N  
ClientSampleId :  
41912

Quant Method : Z:\voasrv\HPCHEM1\MSVOA\_N\methods\82N072921W.M  
Quant Title : SW846 8260

TIC Library : C:\Database\NIST20.L  
TIC Integration Parameters: LSCINT.P



Library Search Compound Report

Data Path : Z:\voasrv\HPCHEM1\MSVOA\_N\Data\VN081221\  
Data File : VN068096.D  
Acq On : 12 Aug 2021 17:54  
Operator : JC/MD  
Sample : M3361-10 50X  
Misc : 5.00mL/MSVOA\_N/WATER  
ALS Vial : 16 Sample Multiplier: 1

Instrument :  
MSVOA\_N  
ClientSampleId :  
41912

Quant Method : Z:\voasrv\HPCHEM1\MSVOA\_N\methods\82N072921W.M  
Quant Title : SW846 8260

TIC Library : C:\Database\NIST20.L  
TIC Integration Parameters: LSCINT.P

No Library Search Compounds Detected

\*\*\*\*\*

Data Path : Z:\voasrv\HPCHEM1\MSVOA\_N\Data\VN081221\  
Data File : VN068096.D  
Acq On : 12 Aug 2021 17:54  
Operator : JC/MD  
Sample : M3361-10 50X  
Misc : 5.00mL/MSVOA\_N/WATER  
ALS Vial : 16 Sample Multiplier: 1

Instrument :  
MSVOA\_N  
ClientSampled :  
41912

Quant Method : Z:\voasrv\HPCHEM1\MSVOA\_N\methods\82N072921W.M  
Quant Title : SW846 8260

TIC Library : C:\Database\NIST20.L  
TIC Integration Parameters: LSCINT.P

TIC Top Hit name	RT	EstConc	Units	Response	--Internal Standard--			
					#	RT	Resp	Conc

---