

Data Path : Z:\voasrv\HPCHEM1\MSVOA_N\Data\VN081522\
 Data File : VN073931.D
 Acq On : 16 Aug 2022 06:35
 Operator : JC\MD
 Sample : N4200-14
 Misc : 5.0mL/MSVOA_N/WATER
 ALS Vial : 49 Sample Multiplier: 1

Instrument :
 MSVOA_N
 ClientSampleId :
 S1

Quant Time: Aug 16 07:18:16 2022
 Quant Method : Z:\voasrv\HPCHEM1\MSVOA_N\methods\82N081522W.M
 Quant Title : SW846 8260
 QLast Update : Tue Aug 16 00:45:21 2022
 Response via : Initial Calibration

Compound	R.T.	QIon	Response	Conc	Units	Dev(Min)

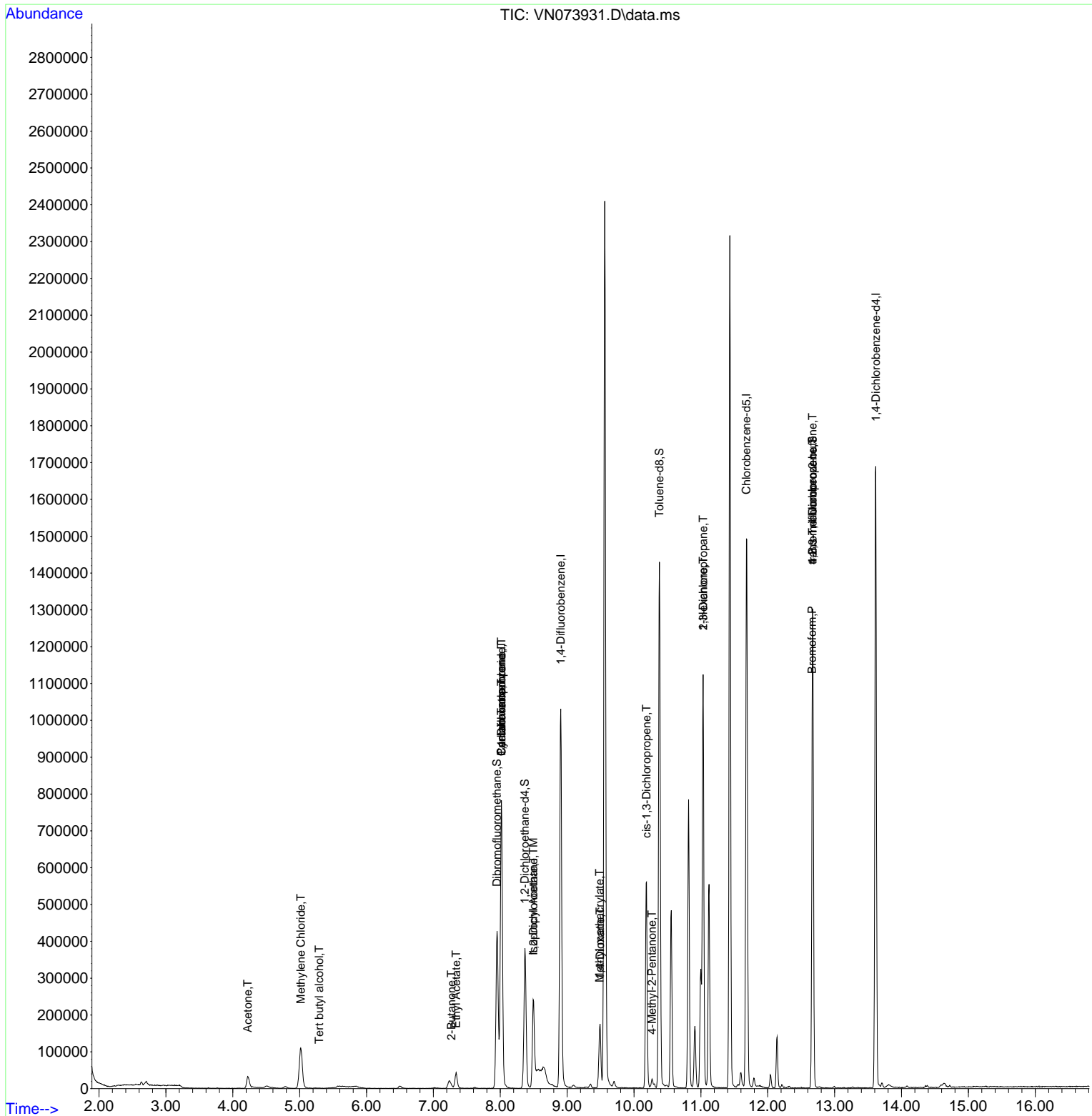
Internal Standards						
1) Pentafluorobenzene	8.016	168	663871	50.000	ug/l	0.00
34) 1,4-Difluorobenzene	8.904	114	980300	50.000	ug/l	0.00
63) Chlorobenzene-d5	11.680	117	957325	50.000	ug/l	0.00
72) 1,4-Dichlorobenzene-d4	13.616	152	506776	50.000	ug/l	0.00
System Monitoring Compounds						
33) 1,2-Dichloroethane-d4	8.369	65	313213	48.439	ug/l	0.00
Spiked Amount	50.000	Range	74 - 125	Recovery	=	96.880%
35) Dibromofluoromethane	7.951	113	306723	52.907	ug/l	0.00
Spiked Amount	50.000	Range	75 - 124	Recovery	=	105.820%
50) Toluene-d8	10.381	98	1040674	46.349	ug/l	0.00
Spiked Amount	50.000	Range	86 - 113	Recovery	=	92.700%
62) 4-Bromofluorobenzene	12.669	95	437007	58.645	ug/l	0.00
Spiked Amount	50.000	Range	83 - 123	Recovery	=	117.300%
Target Compounds						
						Qvalue
11) Tert butyl alcohol	5.293	59	1748	1.209	ug/l #	72
16) Acetone	4.222	43	60932	19.974	ug/l	100
18) Methyl Acetate	4.793	43	11206	Below Cal	#	72
20) Methylene Chloride	5.016	84	98196	15.254	ug/l	94
25) 2-Butanone	7.269	43	13752	2.843	ug/l #	86
31) Cyclohexane	8.016	56	10594	1.175	ug/l #	1
36) 1,1-Dichloropropene	8.016	75	40301	5.005	ug/l #	50
37) Ethyl Acetate	7.340	43	59004	6.048	ug/l	95
38) Carbon Tetrachloride	8.016	117	58039	6.306	ug/l #	17
42) 1,2-Dichloroethane	8.492	62	2097	0.240	ug/l #	74
43) Isopropyl Acetate	8.492	43	286982	20.650	ug/l #	91
48) Methyl methacrylate	9.486	41	9536	1.604	ug/l #	39
49) 1,4-Dioxane	9.492	88	53	0.300	ug/l #	1
51) 4-Methyl-2-Pentanone	10.269	43	23057	2.454	ug/l #	78
54) cis-1,3-Dichloropropene	10.186	75	112783	11.097	ug/l #	62
57) 1,3-Dichloropropane	11.033	76	12667	1.149	ug/l #	42
59) 2-Hexanone	11.033	43	119973	16.591	ug/l #	57
71) Bromoform	12.663	173	1725	0.251	ug/l #	1
76) 1,2,3-Trichloropropane	12.669	75	213518	20.271	ug/l #	1
81) trans-1,4-Dichloro-2-b...	12.669	75	213518	57.654	ug/l #	10

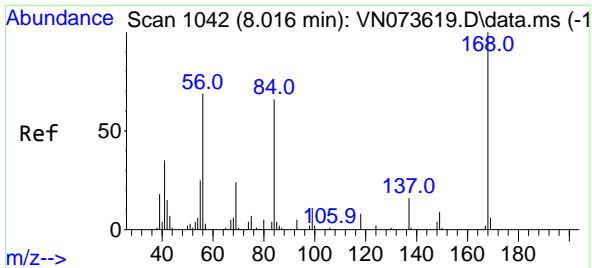
(#) = qualifier out of range (m) = manual integration (+) = signals summed

Data Path : Z:\voasrv\HPCHEM1\MSVOA_N\Data\VN081522\
 Data File : VN073931.D
 Acq On : 16 Aug 2022 06:35
 Operator : JC\MD
 Sample : N4200-14
 Misc : 5.0mL/MSVOA_N/WATER
 ALS Vial : 49 Sample Multiplier: 1

Instrument :
 MSVOA_N
 ClientSampleId :
 S1

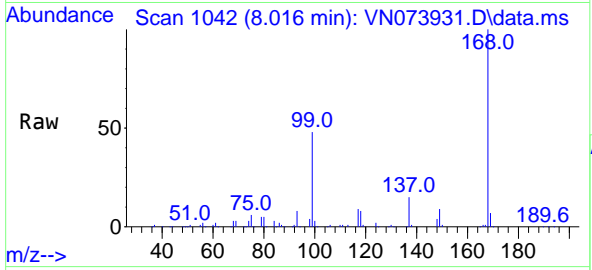
Quant Time: Aug 16 07:18:16 2022
 Quant Method : Z:\voasrv\HPCHEM1\MSVOA_N\methods\82N081522W.M
 Quant Title : SW846 8260
 QLast Update : Tue Aug 16 00:45:21 2022
 Response via : Initial Calibration



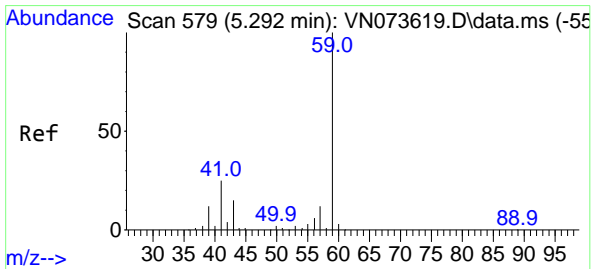
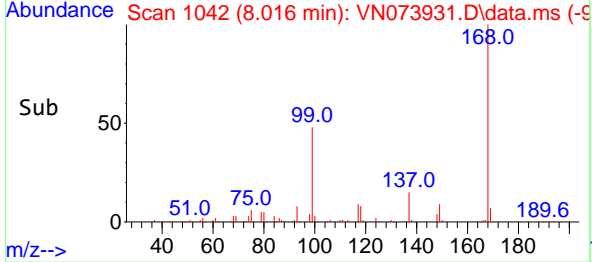
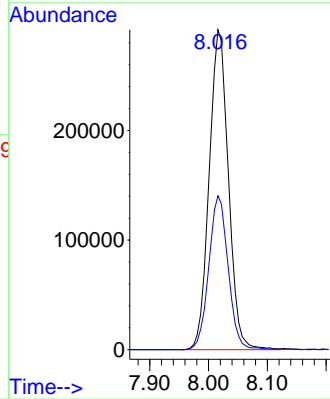


#1
 Pentafluorobenzene
 Concen: 50.000 ug/l
 RT: 8.016 min Scan# 1042
 Delta R.T. -0.000 min
 Lab File: VN073931.D
 Acq: 16 Aug 2022 06:35

Instrument : MSVOA_N
 ClientSampleId : S1

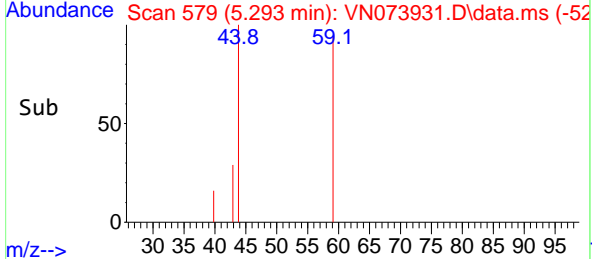
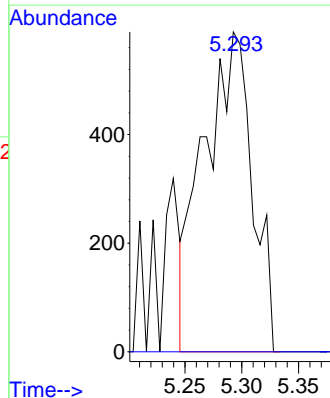
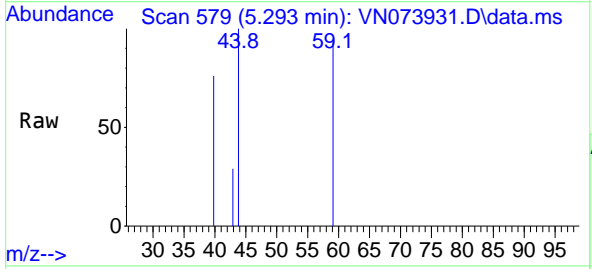


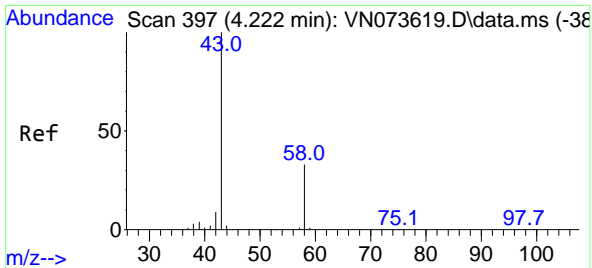
Tgt Ion:168 Resp: 663871
 Ion Ratio Lower Upper
 168 100
 99 48.1 42.3 63.5



#11
 Tert butyl alcohol
 Concen: 1.209 ug/l
 RT: 5.293 min Scan# 579
 Delta R.T. 0.001 min
 Lab File: VN073931.D
 Acq: 16 Aug 2022 06:35

Tgt Ion: 59 Resp: 1748
 Ion Ratio Lower Upper
 59 100
 57 0.0 8.3 12.5#

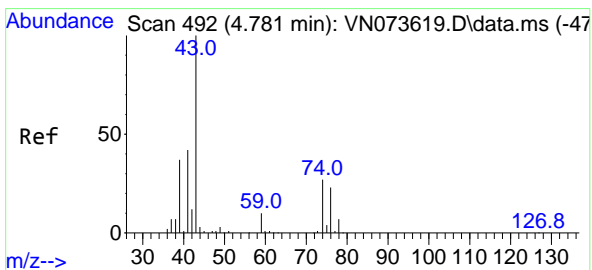
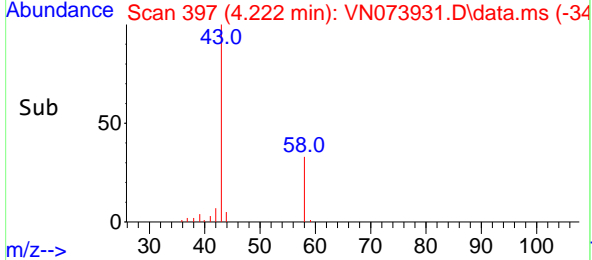
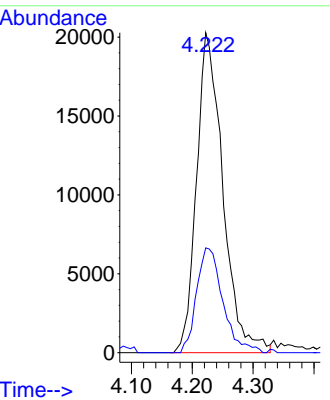
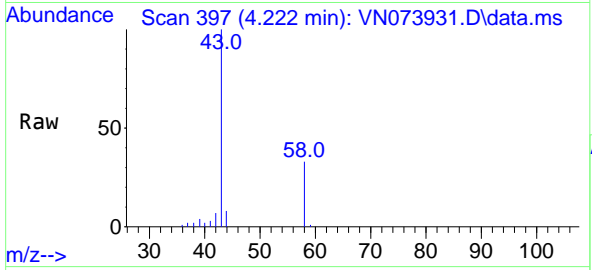




#16
 Acetone
 Concen: 19.974 ug/l
 RT: 4.222 min Scan# 397
 Delta R.T. 0.000 min
 Lab File: VN073931.D
 Acq: 16 Aug 2022 06:35

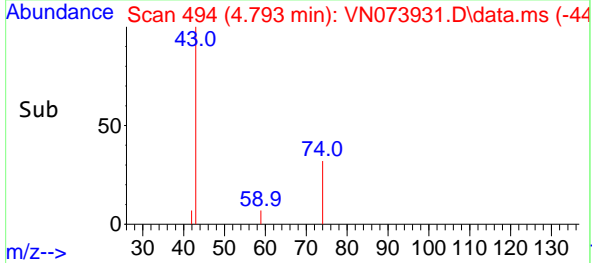
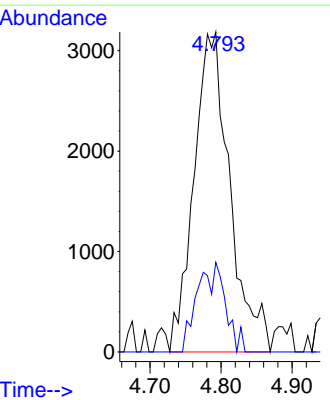
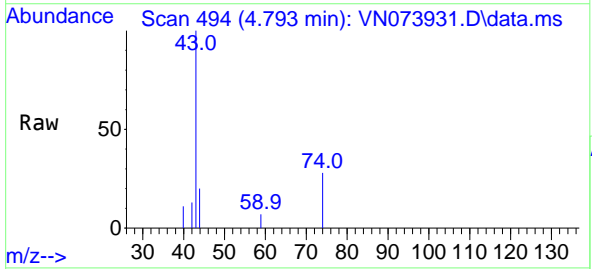
Instrument : MSVOA_N
 ClientSampleId : S1

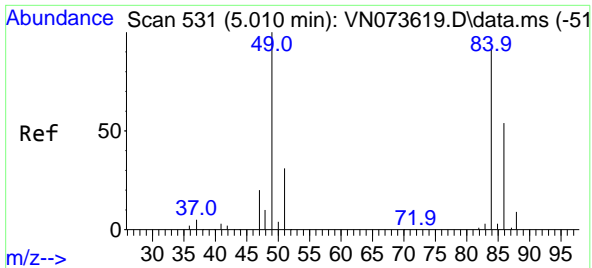
Tgt Ion: 43 Resp: 60932
 Ion Ratio Lower Upper
 43 100
 58 32.7 26.0 39.0



#18
 Methyl Acetate
 Concen: Below Cal
 RT: 4.793 min Scan# 494
 Delta R.T. 0.012 min
 Lab File: VN073931.D
 Acq: 16 Aug 2022 06:35

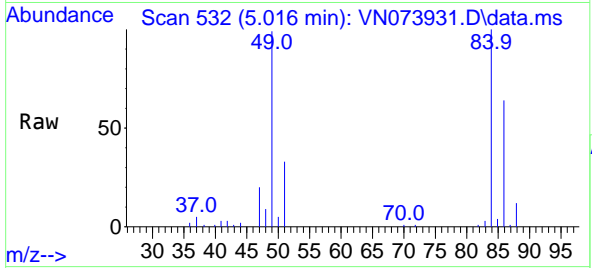
Tgt Ion: 43 Resp: 11206
 Ion Ratio Lower Upper
 43 100
 74 12.3 21.6 32.4#





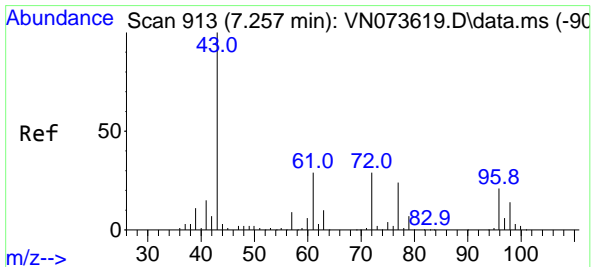
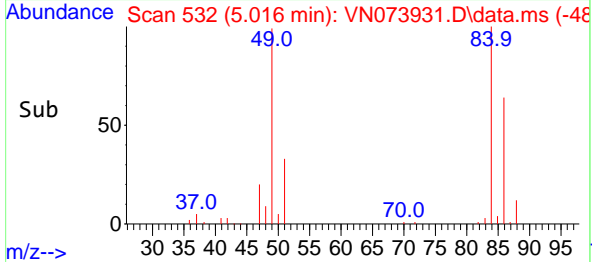
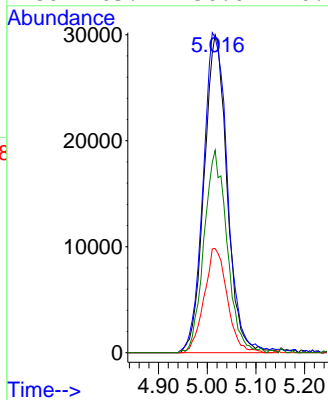
#20
 Methylene Chloride
 Concen: 15.254 ug/l
 RT: 5.016 min Scan# 51
 Delta R.T. 0.006 min
 Lab File: VN073931.D
 Acq: 16 Aug 2022 06:35

Instrument :
 MSVOA_N
 ClientSampleId :
 S1



Tgt Ion: 84 Resp: 98196

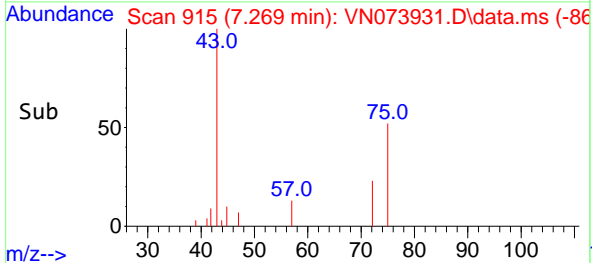
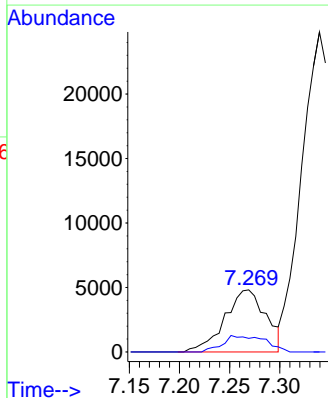
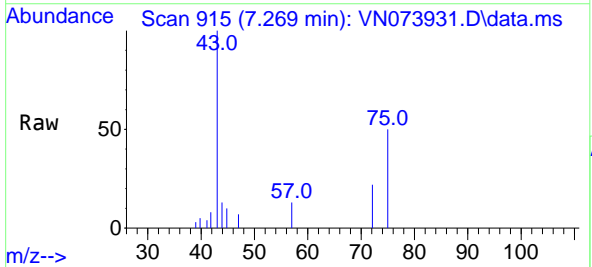
Ion	Ratio	Lower	Upper
84	100		
49	99.1	88.3	132.5
51	32.8	28.2	42.2
86	63.7	50.6	76.0

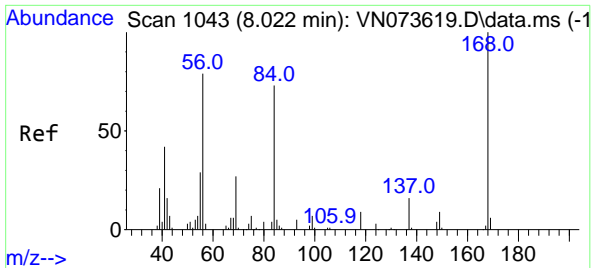


#25
 2-Butanone
 Concen: 2.843 ug/l
 RT: 7.269 min Scan# 915
 Delta R.T. 0.012 min
 Lab File: VN073931.D
 Acq: 16 Aug 2022 06:35

Tgt Ion: 43 Resp: 13752

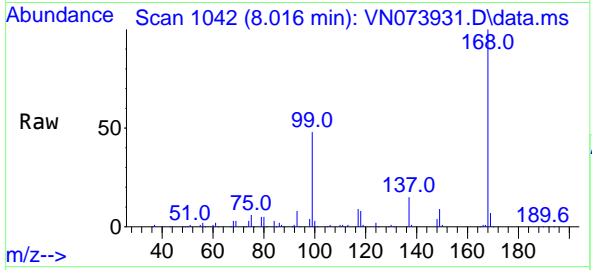
Ion	Ratio	Lower	Upper
43	100		
72	21.9	23.7	35.5#





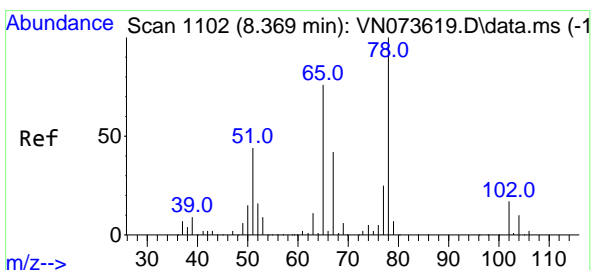
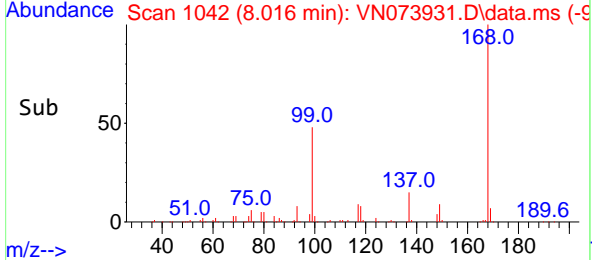
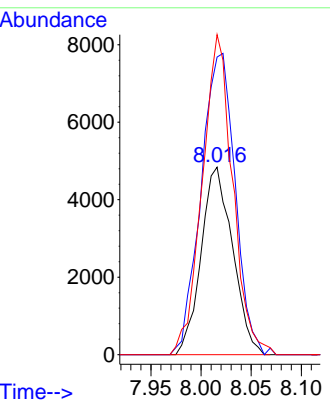
#31
 Cyclohexane
 Concen: 1.175 ug/l
 RT: 8.016 min Scan# 1042
 Delta R.T. -0.006 min
 Lab File: VN073931.D
 Acq: 16 Aug 2022 06:35

Instrument : MSVOA_N
 ClientSampleId : S1



Tgt Ion: 56 Resp: 10594

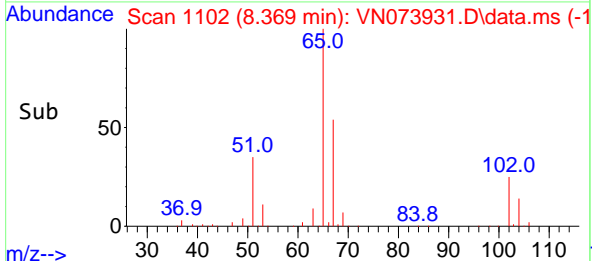
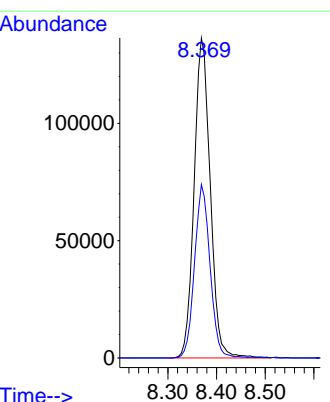
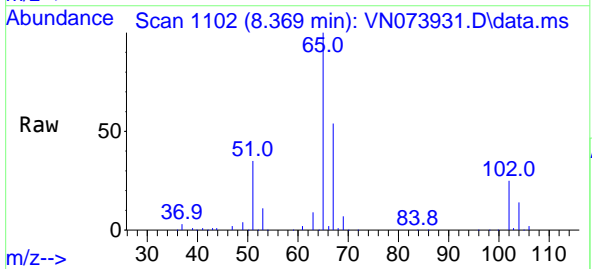
Ion	Ratio	Lower	Upper
56	100		
69	158.6	27.8	41.8#
84	170.6	76.9	115.3#

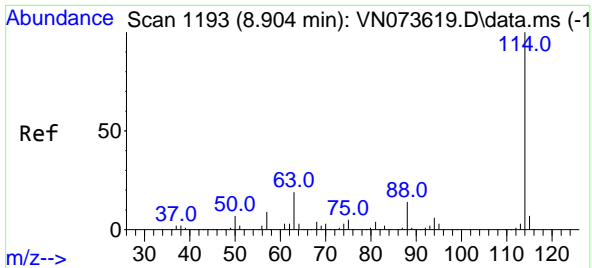


#33
 1,2-Dichloroethane-d4
 Concen: 48.439 ug/l
 RT: 8.369 min Scan# 1102
 Delta R.T. -0.000 min
 Lab File: VN073931.D
 Acq: 16 Aug 2022 06:35

Tgt Ion: 65 Resp: 313213

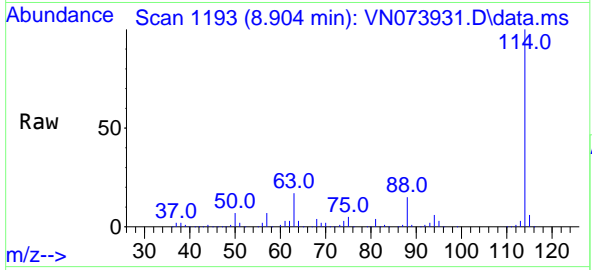
Ion	Ratio	Lower	Upper
65	100		
67	52.3	0.0	104.8





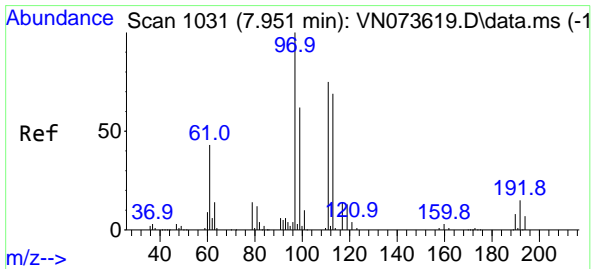
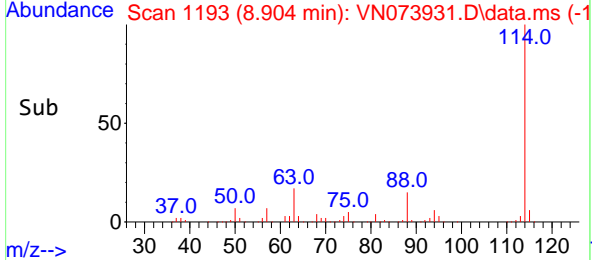
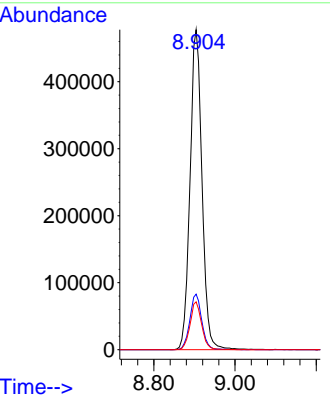
#34
 1,4-Difluorobenzene
 Concen: 50.000 ug/l
 RT: 8.904 min Scan# 1193
 Delta R.T. 0.000 min
 Lab File: VN073931.D
 Acq: 16 Aug 2022 06:35

Instrument : MSVOA_N
 ClientSampleId : S1



Tgt Ion:114 Resp: 980300

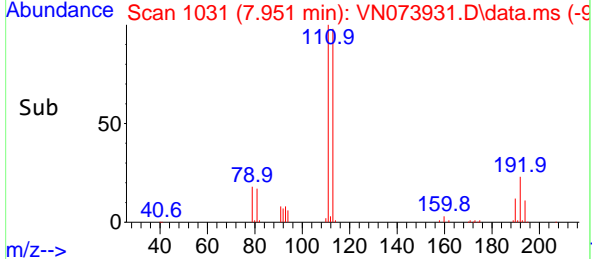
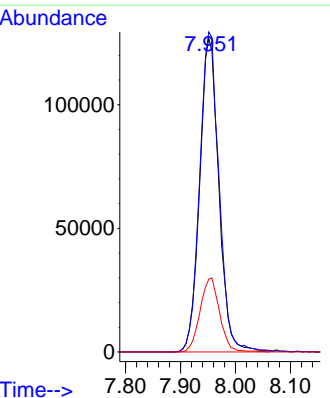
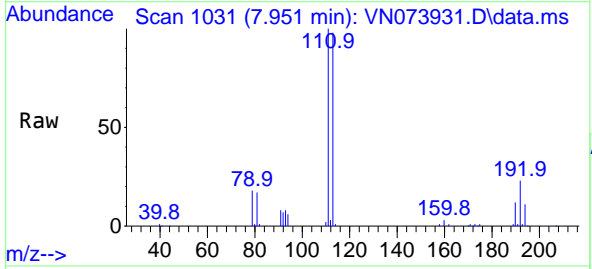
Ion	Ratio	Lower	Upper
114	100		
63	17.3	0.0	40.0
88	15.0	0.0	32.6

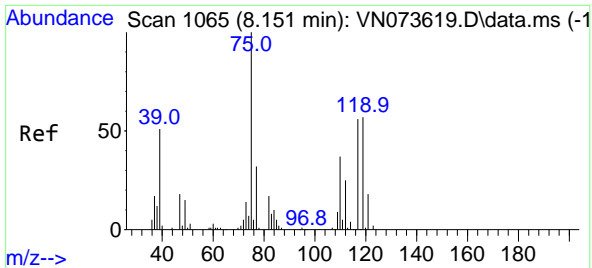


#35
 Dibromofluoromethane
 Concen: 52.907 ug/l
 RT: 7.951 min Scan# 1031
 Delta R.T. 0.000 min
 Lab File: VN073931.D
 Acq: 16 Aug 2022 06:35

Tgt Ion:113 Resp: 306723

Ion	Ratio	Lower	Upper
113	100		
111	103.5	81.4	122.0
192	24.1	17.0	25.6



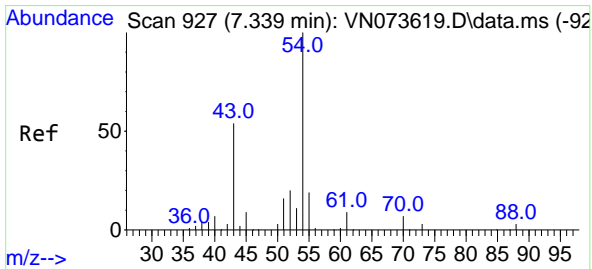
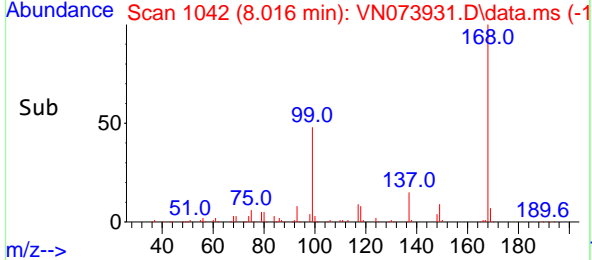
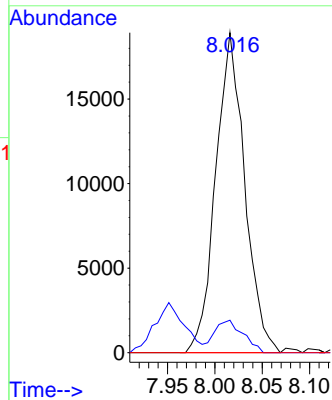
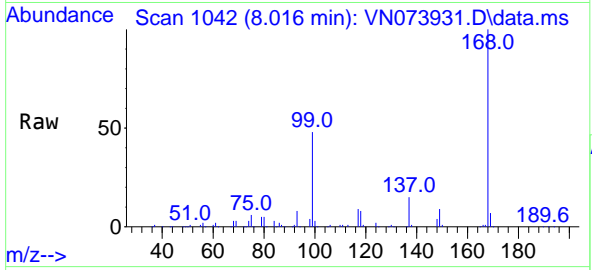


#36
 1,1-Dichloropropene
 Concen: 5.005 ug/l
 RT: 8.016 min Scan# 1065
 Delta R.T. -0.135 min
 Lab File: VN073931.D
 Acq: 16 Aug 2022 06:35

Instrument : MSVOA_N
 ClientSampleId : S1

Tgt Ion: 75 Resp: 40301

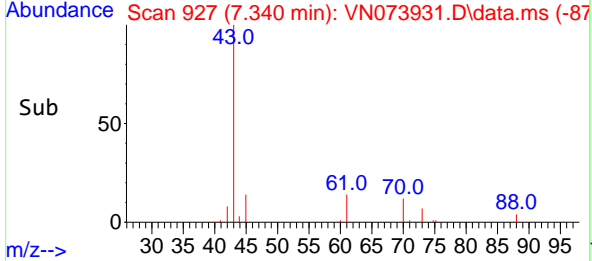
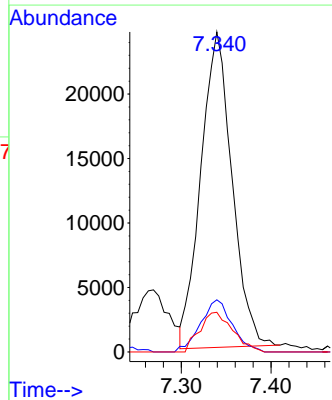
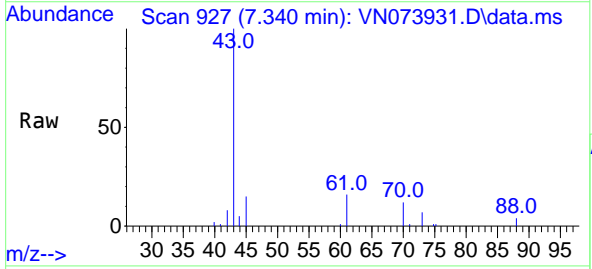
Ion	Ratio	Lower	Upper
75	100		
110	10.1	18.3	54.8#
77	0.0	25.1	37.7#

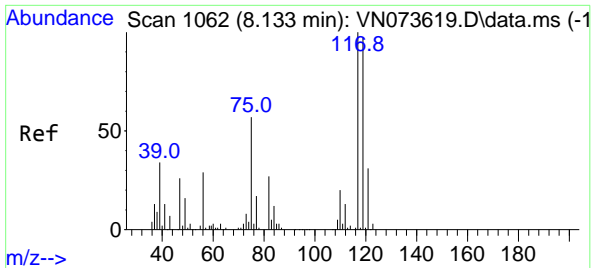


#37
 Ethyl Acetate
 Concen: 6.048 ug/l
 RT: 7.340 min Scan# 927
 Delta R.T. 0.001 min
 Lab File: VN073931.D
 Acq: 16 Aug 2022 06:35

Tgt Ion: 43 Resp: 59004

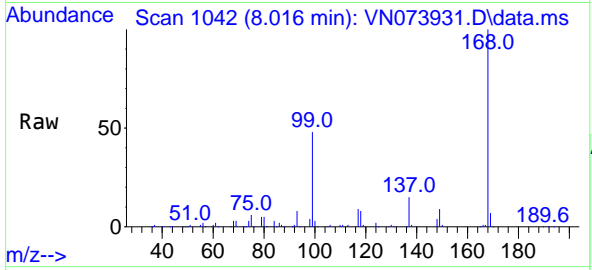
Ion	Ratio	Lower	Upper
43	100		
61	16.8	11.8	17.6
70	13.3	9.3	13.9



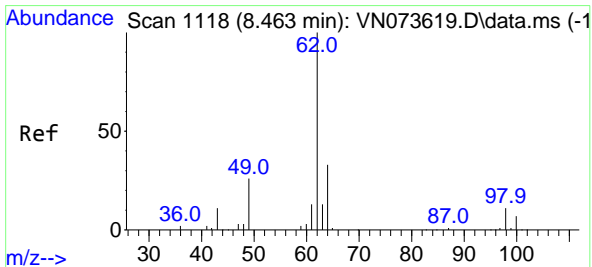
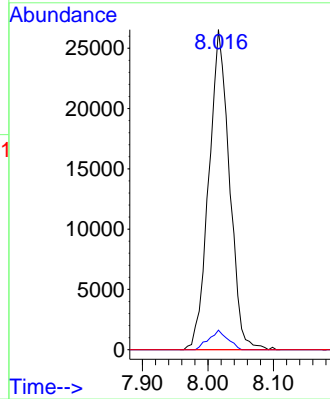
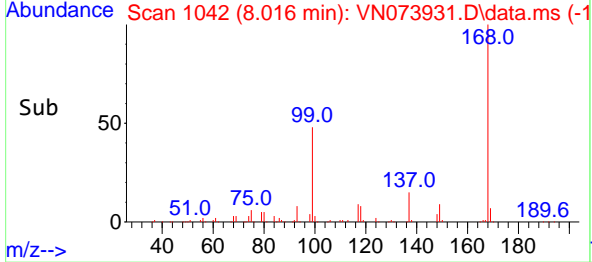


#38
 Carbon Tetrachloride
 Concen: 6.306 ug/l
 RT: 8.016 min Scan# 10
 Delta R.T. -0.117 min
 Lab File: VN073931.D
 Acq: 16 Aug 2022 06:35

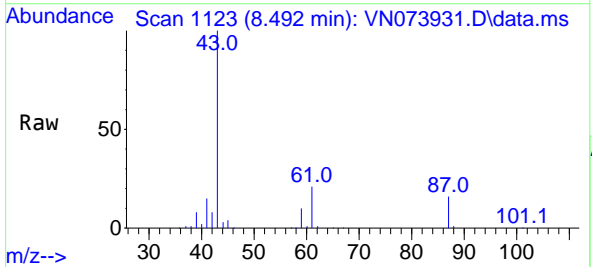
Instrument : MSVOA_N
 ClientSampleId : S1



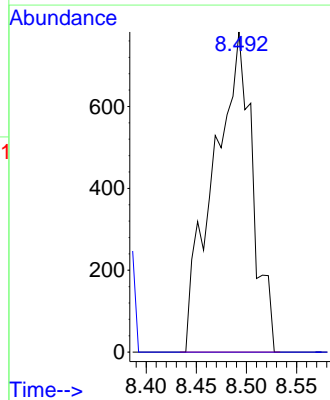
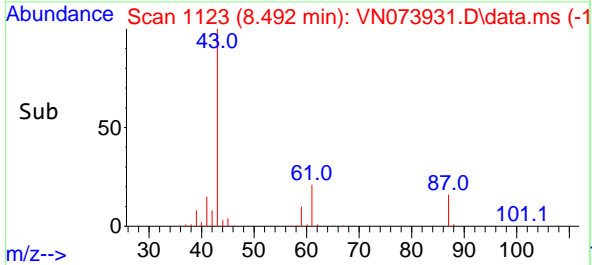
Tgt Ion: 117 Resp: 58039
 Ion Ratio Lower Upper
 117 100
 119 6.1 75.8 113.8#
 121 0.0 24.6 37.0#

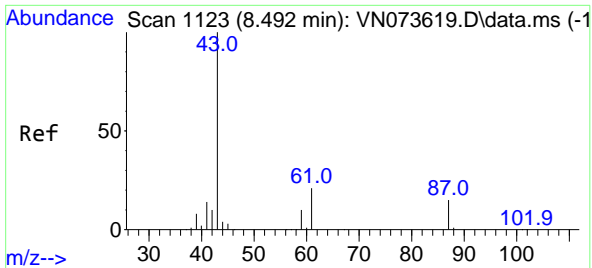


#42
 1,2-Dichloroethane
 Concen: 0.240 ug/l
 RT: 8.492 min Scan# 1123
 Delta R.T. 0.029 min
 Lab File: VN073931.D
 Acq: 16 Aug 2022 06:35



Tgt Ion: 62 Resp: 2097
 Ion Ratio Lower Upper
 62 100
 98 0.0 0.0 19.4



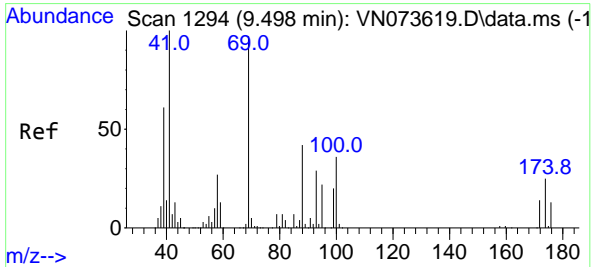
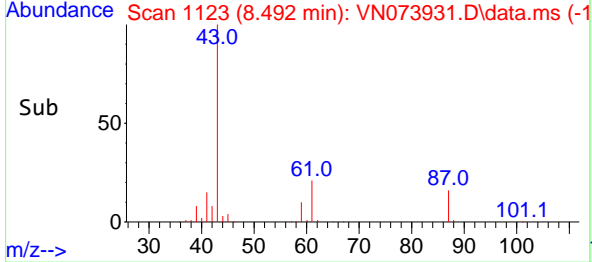
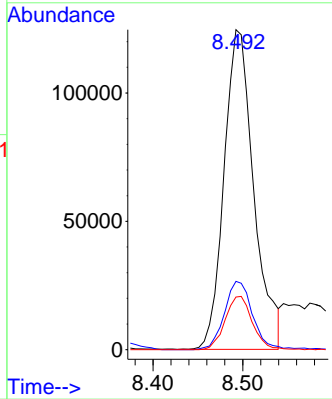
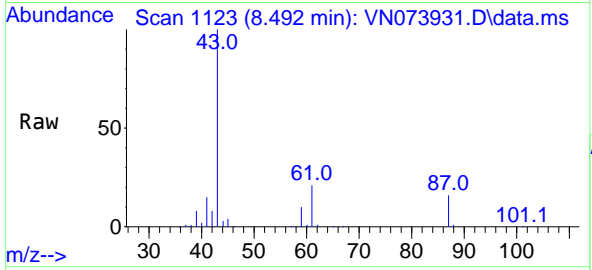


#43
 Isopropyl Acetate
 Concen: 20.650 ug/l
 RT: 8.492 min Scan# 1123
 Delta R.T. 0.000 min
 Lab File: VN073931.D
 Acq: 16 Aug 2022 06:35

Instrument : MSVOA_N
 ClientSampleId : S1

Tgt Ion: 43 Resp: 286982

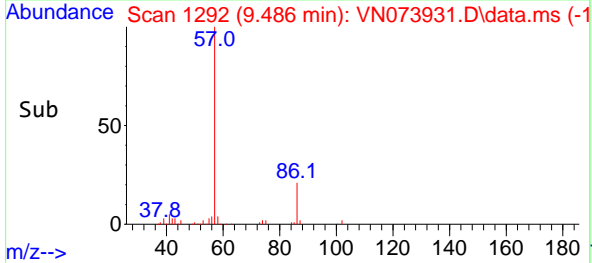
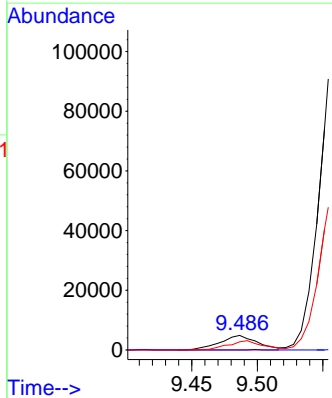
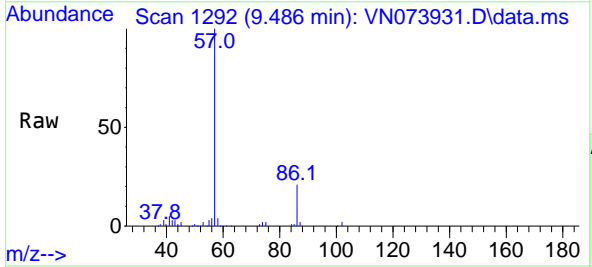
Ion	Ratio	Lower	Upper
43	100		
61	20.5	21.9	32.9#
87	15.3	12.0	18.0

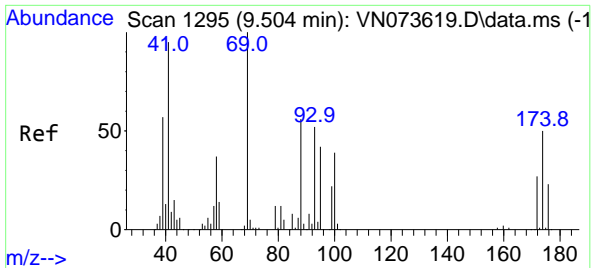


#48
 Methyl methacrylate
 Concen: 1.604 ug/l
 RT: 9.486 min Scan# 1292
 Delta R.T. -0.012 min
 Lab File: VN073931.D
 Acq: 16 Aug 2022 06:35

Tgt Ion: 41 Resp: 9536

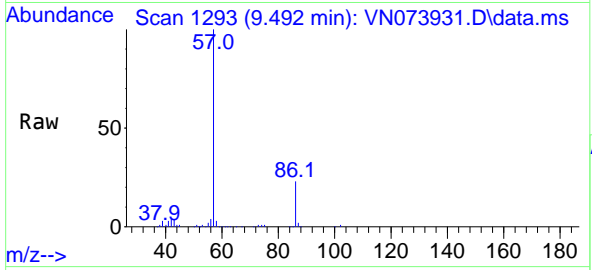
Ion	Ratio	Lower	Upper
41	100		
69	0.6	74.7	112.1#
39	60.0	45.6	68.4



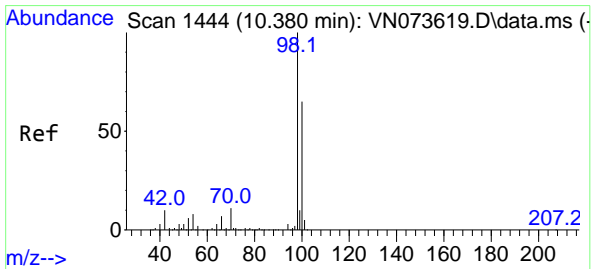
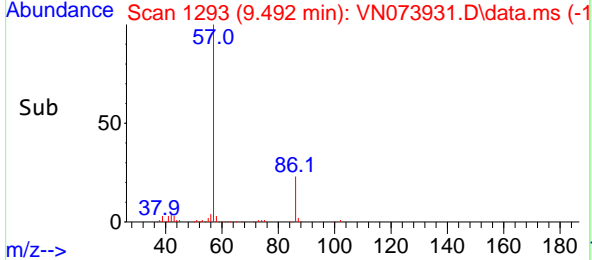
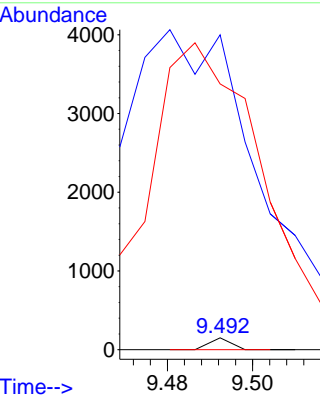


#49
 1,4-Dioxane
 Concen: 0.300 ug/l
 RT: 9.492 min Scan# 11
 Delta R.T. -0.012 min
 Lab File: VN073931.D
 Acq: 16 Aug 2022 06:35

Instrument : MSVOA_N
 ClientSampleId : S1

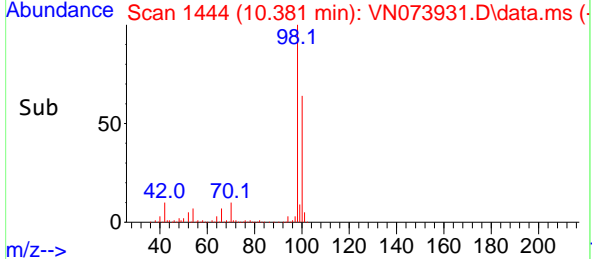
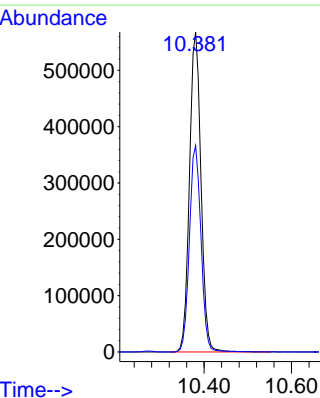
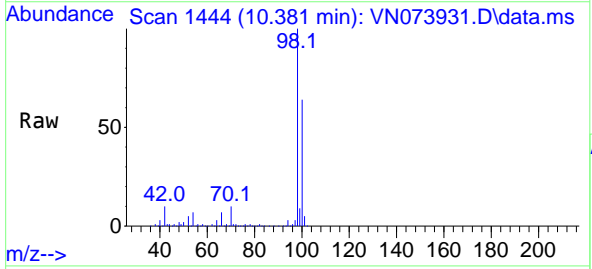


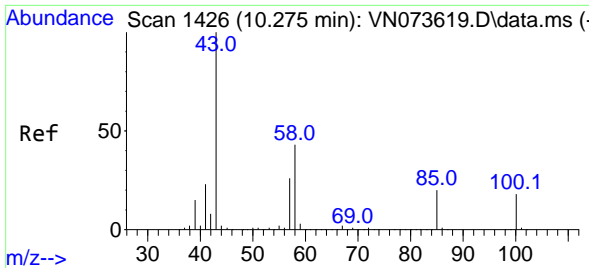
Tgt Ion: 88 Resp: 53
 Ion Ratio Lower Upper
 88 100
 43 0.0 20.2 30.4#
 58 15000.0 54.2 81.4#



#50
 Toluene-d8
 Concen: 46.349 ug/l
 RT: 10.381 min Scan# 1444
 Delta R.T. 0.001 min
 Lab File: VN073931.D
 Acq: 16 Aug 2022 06:35

Tgt Ion: 98 Resp: 1040674
 Ion Ratio Lower Upper
 98 100
 100 64.8 52.6 78.8

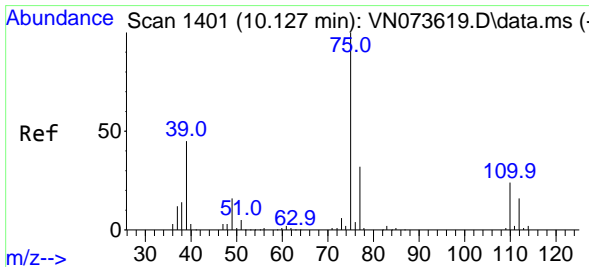
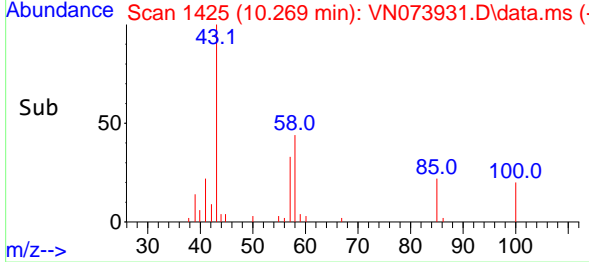
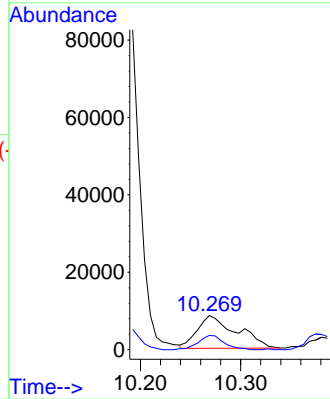
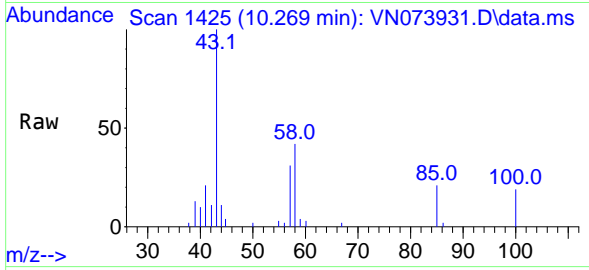




#51
 4-Methyl-2-Pentanone
 Concen: 2.454 ug/l
 RT: 10.269 min Scan# 1410
 Delta R.T. -0.006 min
 Lab File: VN073931.D
 Acq: 16 Aug 2022 06:35

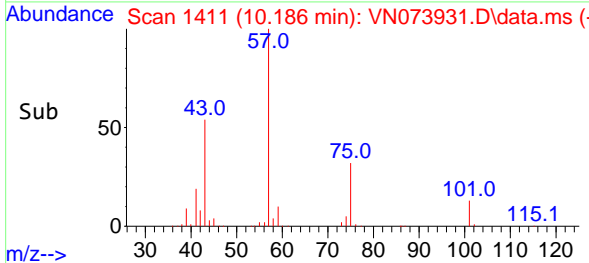
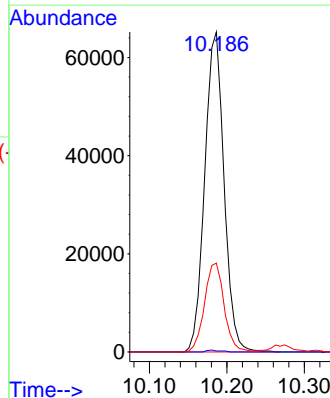
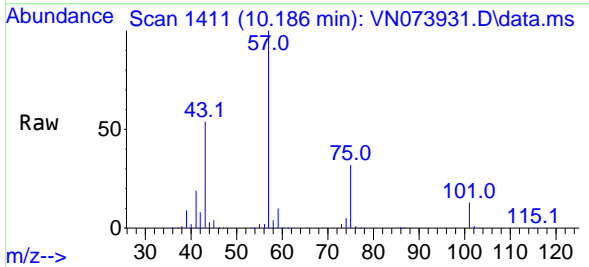
Instrument : MSVOA_N
 ClientSampleId : S1

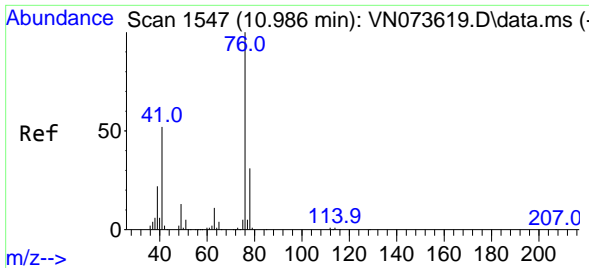
Tgt Ion: 43 Resp: 23057
 Ion Ratio Lower Upper
 43 100
 58 28.3 34.1 51.1#



#54
 cis-1,3-Dichloropropene
 Concen: 11.097 ug/l
 RT: 10.186 min Scan# 1411
 Delta R.T. 0.059 min
 Lab File: VN073931.D
 Acq: 16 Aug 2022 06:35

Tgt Ion: 75 Resp: 112783
 Ion Ratio Lower Upper
 75 100
 77 0.3 25.2 37.8#
 39 27.8 35.7 53.5#

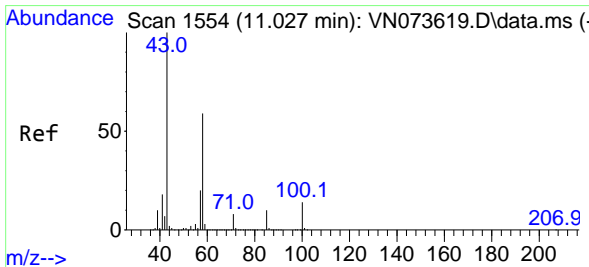
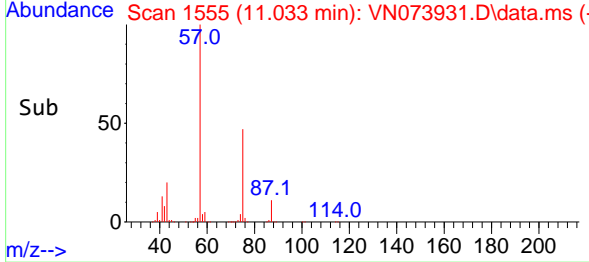
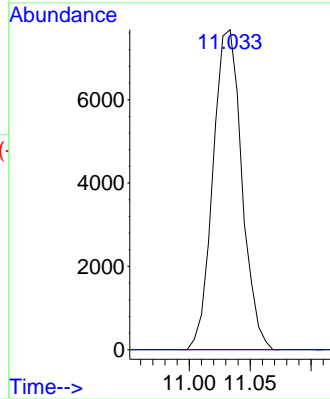
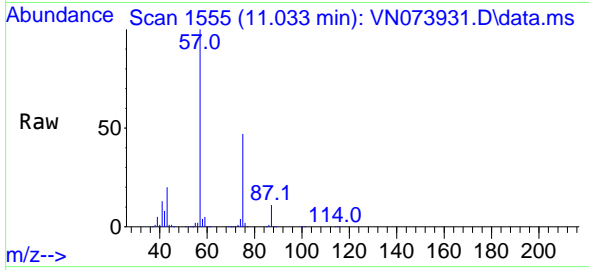




#57
 1,3-Dichloropropane
 Concen: 1.149 ug/l
 RT: 11.033 min Scan# 1555
 Delta R.T. 0.047 min
 Lab File: VN073931.D
 Acq: 16 Aug 2022 06:35

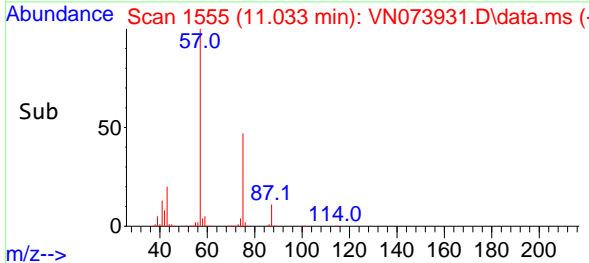
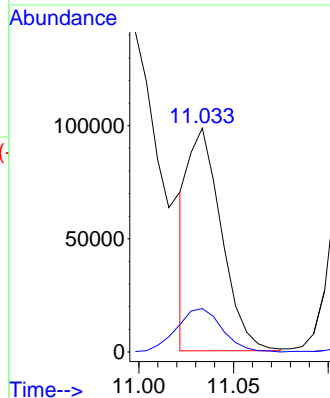
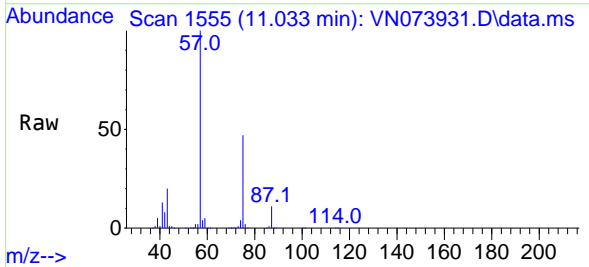
Instrument : MSVOA_N
 ClientSampleId : S1

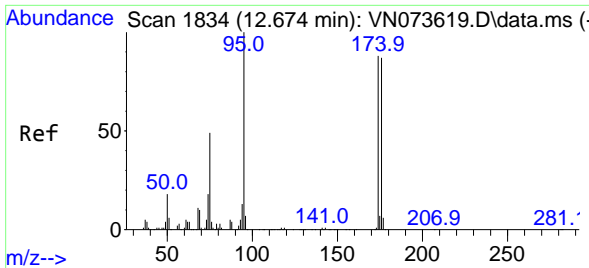
Tgt Ion: 76 Resp: 12667
 Ion Ratio Lower Upper
 76 100
 78 0.0 26.2 39.2#



#59
 2-Hexanone
 Concen: 16.591 ug/l
 RT: 11.033 min Scan# 1555
 Delta R.T. 0.006 min
 Lab File: VN073931.D
 Acq: 16 Aug 2022 06:35

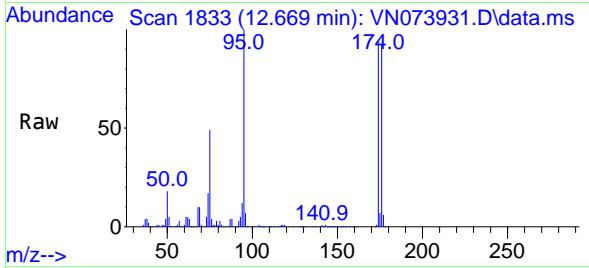
Tgt Ion: 43 Resp: 119973
 Ion Ratio Lower Upper
 43 100
 58 26.8 29.7 89.1#





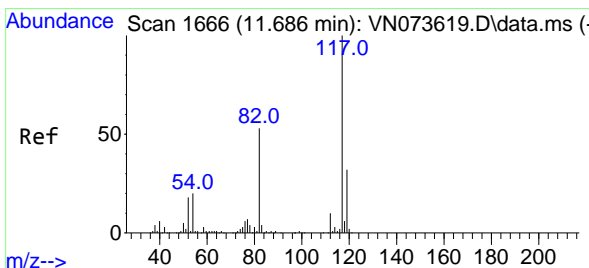
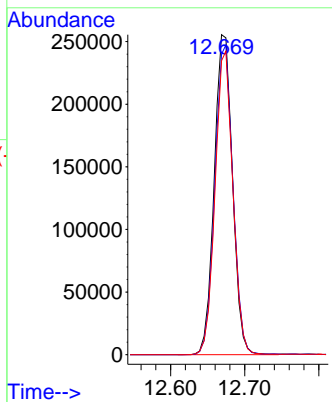
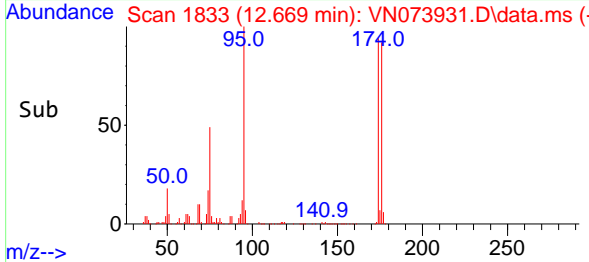
#62
 4-Bromofluorobenzene
 Concen: 58.645 ug/l
 RT: 12.669 min Scan# 1833
 Delta R.T. -0.005 min
 Lab File: VN073931.D
 Acq: 16 Aug 2022 06:35

Instrument : MSVOA_N
 ClientSampleId : S1

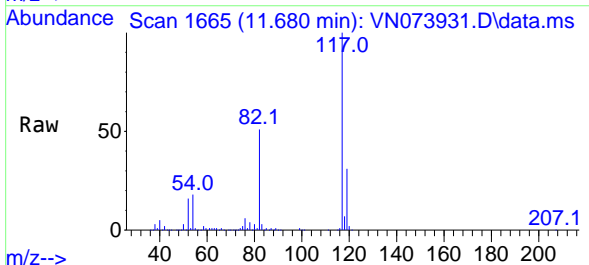


Tgt Ion: 95 Resp: 437007

Ion	Ratio	Lower	Upper
95	100		
174	95.6	0.0	167.6
176	92.5	0.0	163.4

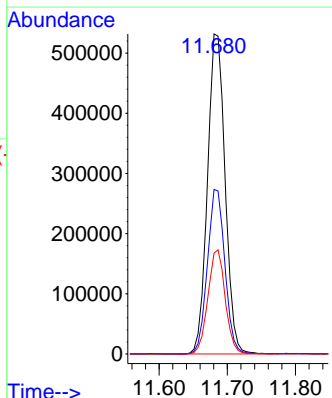
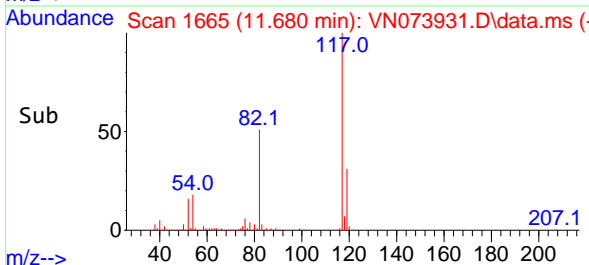


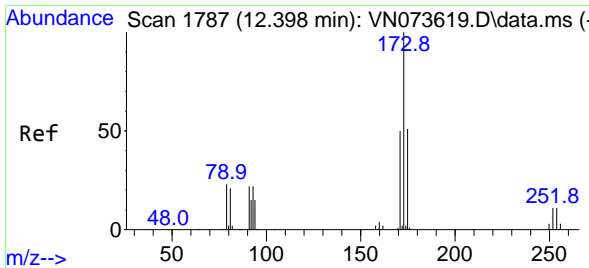
#63
 Chlorobenzene-d5
 Concen: 50.000 ug/l
 RT: 11.680 min Scan# 1665
 Delta R.T. -0.006 min
 Lab File: VN073931.D
 Acq: 16 Aug 2022 06:35



Tgt Ion: 117 Resp: 957325

Ion	Ratio	Lower	Upper
117	100		
82	51.4	44.2	66.2
119	31.5	25.4	38.0



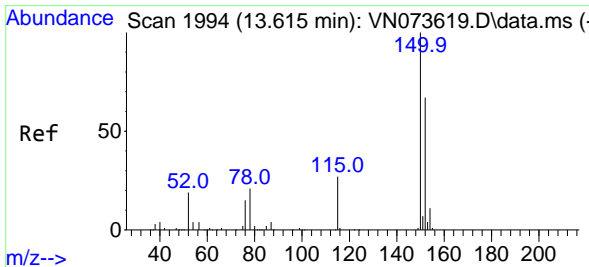
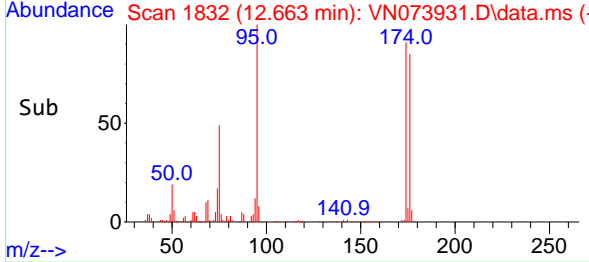
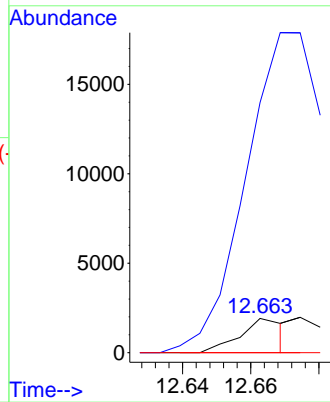
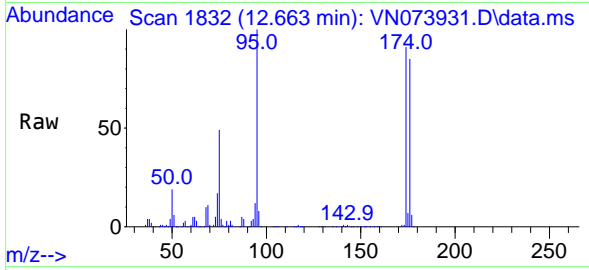


#71
 Bromoform
 Concen: 0.251 ug/l
 RT: 12.663 min Scan# 1832
 Delta R.T. 0.265 min
 Lab File: VN073931.D
 Acq: 16 Aug 2022 06:35

Instrument :
 MSVOA_N
 ClientSampleId :
 S1

Tgt Ion:173 Resp: 1725

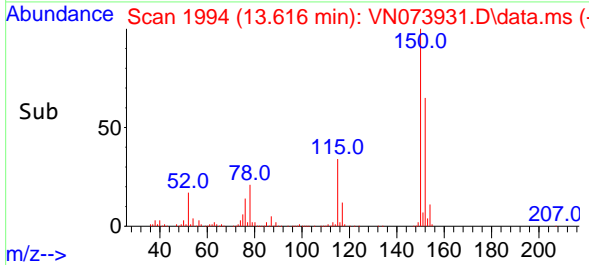
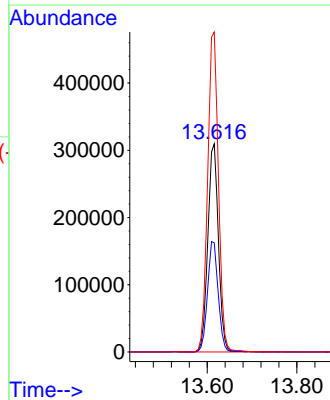
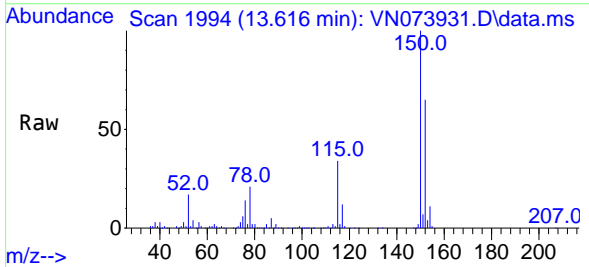
Ion	Ratio	Lower	Upper
173	100		
175	1282.2	24.6	73.6#
254	0.0	0.1	0.1#

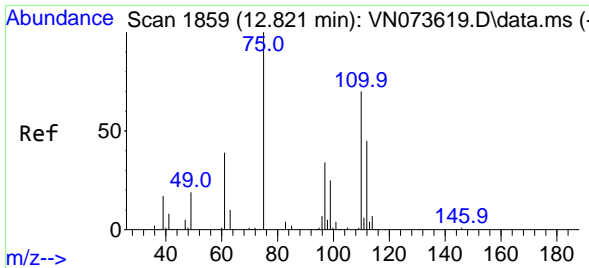


#72
 1,4-Dichlorobenzene-d4
 Concen: 50.000 ug/l
 RT: 13.616 min Scan# 1994
 Delta R.T. 0.001 min
 Lab File: VN073931.D
 Acq: 16 Aug 2022 06:35

Tgt Ion:152 Resp: 506776

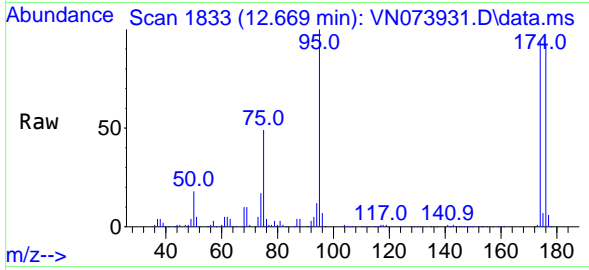
Ion	Ratio	Lower	Upper
152	100		
115	53.5	28.9	86.7
150	156.6	0.0	356.2



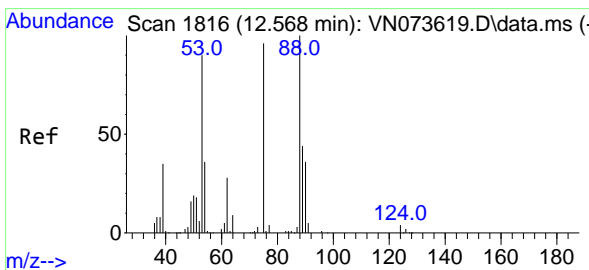
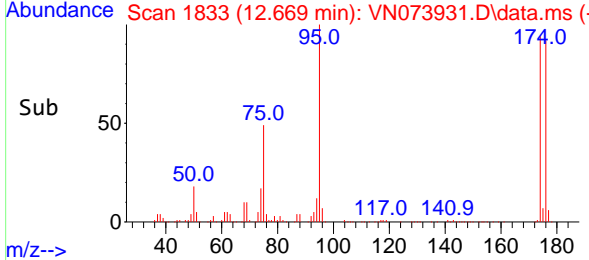
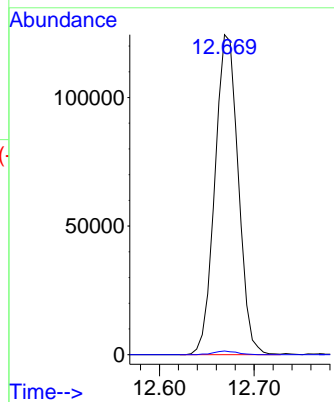


#76
 1,2,3-Trichloropropane
 Concen: 20.271 ug/l
 RT: 12.669 min Scan# 1833
 Delta R.T. -0.152 min
 Lab File: VN073931.D
 Acq: 16 Aug 2022 06:35

Instrument : MSVOA_N
 ClientSampleId : S1



Tgt Ion: 75 Resp: 213518
 Ion Ratio Lower Upper
 75 100
 77 1.1 98.5 295.5#



#81
 trans-1,4-Dichloro-2-butene
 Concen: 57.654 ug/l
 RT: 12.669 min Scan# 1833
 Delta R.T. 0.101 min
 Lab File: VN073931.D
 Acq: 16 Aug 2022 06:35

Tgt Ion: 75 Resp: 213518
 Ion Ratio Lower Upper
 75 100
 53 0.0 78.0 117.0#
 89 0.0 37.2 55.8#

