

Data Path : Z:\voasrv\HPCHEM1\MSVOA\_N\Data\VN081522\  
 Data File : VN073933.D  
 Acq On : 16 Aug 2022 07:24  
 Operator : JC\MD  
 Sample : N4211-06  
 Misc : 5.0mL/MSVOA\_N/WATER  
 ALS Vial : 51 Sample Multiplier: 1

Instrument :  
 MSVOA\_N  
 ClientSampleId :  
 VOC-WC-1

Quant Time: Aug 16 08:09:59 2022  
 Quant Method : Z:\voasrv\HPCHEM1\MSVOA\_N\methods\82N081522W.M  
 Quant Title : SW846 8260  
 QLast Update : Tue Aug 16 00:45:21 2022  
 Response via : Initial Calibration

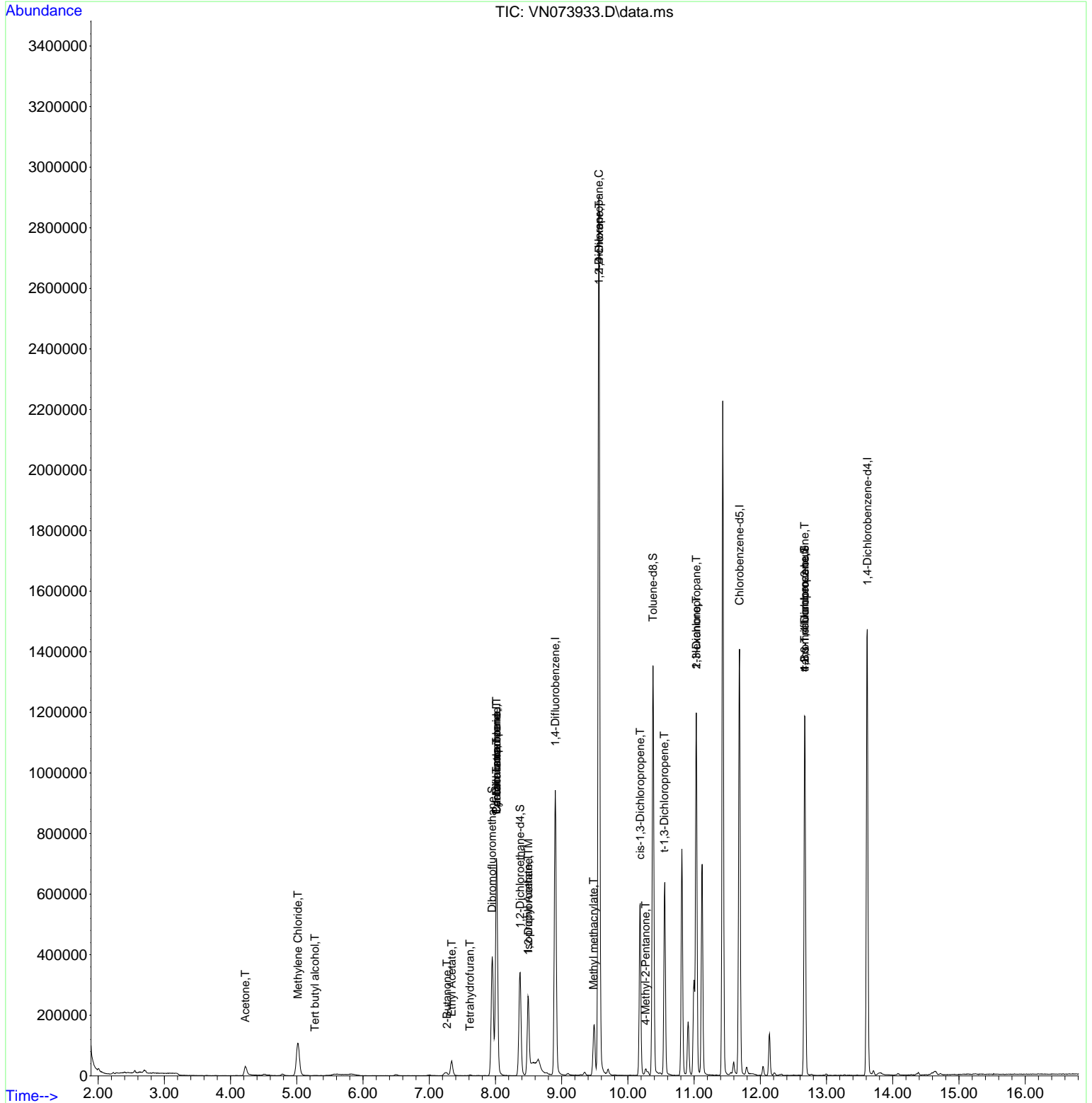
Compound	R.T.	QIon	Response	Conc	Units	Dev(Min)
-----						
Internal Standards						
1) Pentafluorobenzene	8.016	168	616623	50.000	ug/l	0.00
34) 1,4-Difluorobenzene	8.904	114	896417	50.000	ug/l	0.00
63) Chlorobenzene-d5	11.686	117	872816	50.000	ug/l	0.00
72) 1,4-Dichlorobenzene-d4	13.616	152	440191	50.000	ug/l	0.00
System Monitoring Compounds						
33) 1,2-Dichloroethane-d4	8.375	65	289387	48.184	ug/l	0.00
Spiked Amount	50.000	Range 74 - 125	Recovery	=	96.360%	
35) Dibromofluoromethane	7.951	113	288621	54.443	ug/l	0.00
Spiked Amount	50.000	Range 75 - 124	Recovery	=	108.880%	
50) Toluene-d8	10.380	98	956741	46.599	ug/l	0.00
Spiked Amount	50.000	Range 86 - 113	Recovery	=	93.200%	
62) 4-Bromofluorobenzene	12.669	95	387266	56.834	ug/l	0.00
Spiked Amount	50.000	Range 83 - 123	Recovery	=	113.660%	
Target Compounds						
						Qvalue
11) Tert butyl alcohol	5.275	59	1316	0.980	ug/l #	72
16) Acetone	4.222	43	57838	20.412	ug/l	94
18) Methyl Acetate	4.781	43	10742	Below Cal		96
20) Methylene Chloride	5.016	84	97582	16.320	ug/l	97
25) 2-Butanone	7.269	43	12102	2.694	ug/l	93
29) Tetrahydrofuran	7.616	42	1696	0.588	ug/l	96
31) Cyclohexane	8.016	56	10202	1.219	ug/l #	1
36) 1,1-Dichloropropene	8.016	75	38075	5.171	ug/l #	50
37) Ethyl Acetate	7.339	43	72354	8.111	ug/l	99
38) Carbon Tetrachloride	8.016	117	53693	6.379	ug/l #	16
42) 1,2-Dichloroethane	8.498	62	1991	0.249	ug/l #	74
43) Isopropyl Acetate	8.492	43	312672	24.604	ug/l #	90
45) 1,2-Dichloropropane	9.563	63	3908	0.702	ug/l #	44
48) Methyl methacrylate	9.481	41	9866	1.814	ug/l #	39
49) 1,4-Dioxane	9.569	88	715	4.422	ug/l #	1
51) 4-Methyl-2-Pentanone	10.269	43	13243	1.541	ug/l	96
53) t-1,3-Dichloropropene	10.551	75	1878	0.221	ug/l #	39
54) cis-1,3-Dichloropropene	10.186	75	111482	11.996	ug/l #	60
57) 1,3-Dichloropropane	11.033	76	13240	1.314	ug/l #	42
59) 2-Hexanone	11.033	43	156796	23.712	ug/l #	50
76) 1,2,3-Trichloropropane	12.669	75	195865	21.408	ug/l #	1
81) trans-1,4-Dichloro-2-b...	12.669	75	195865	60.887	ug/l #	10

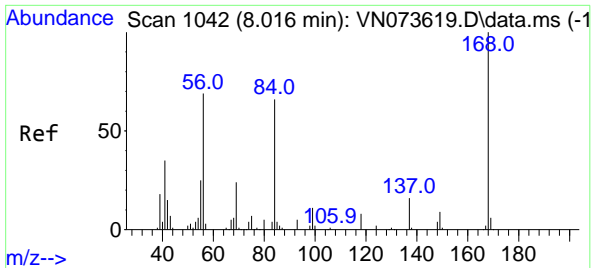
(#) = qualifier out of range (m) = manual integration (+) = signals summed

Data Path : Z:\voasrv\HPCHEM1\MSVOA\_N\Data\VN081522\  
 Data File : VN073933.D  
 Acq On : 16 Aug 2022 07:24  
 Operator : JC\MD  
 Sample : N4211-06  
 Misc : 5.0mL/MSVOA\_N/WATER  
 ALS Vial : 51 Sample Multiplier: 1

Instrument :  
 MSVOA\_N  
 ClientSampleId :  
 VOC-WC-1

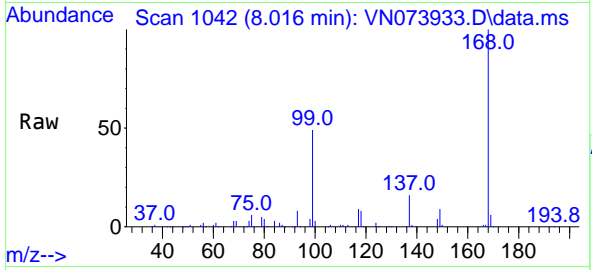
Quant Time: Aug 16 08:09:59 2022  
 Quant Method : Z:\voasrv\HPCHEM1\MSVOA\_N\methods\82N081522W.M  
 Quant Title : SW846 8260  
 QLast Update : Tue Aug 16 00:45:21 2022  
 Response via : Initial Calibration



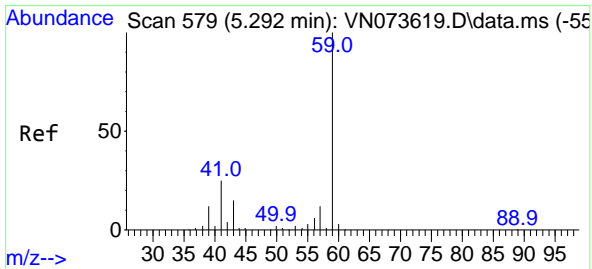
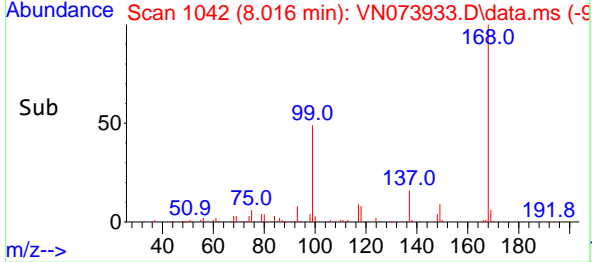
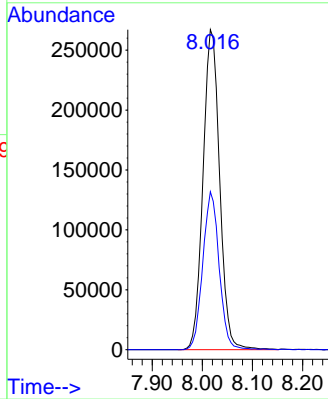


#1  
 Pentafluorobenzene  
 Concen: 50.000 ug/l  
 RT: 8.016 min Scan# 1042  
 Delta R.T. -0.000 min  
 Lab File: VN073933.D  
 Acq: 16 Aug 2022 07:24

Instrument : MSVOA\_N  
 ClientSampleId : VOC-WC-1

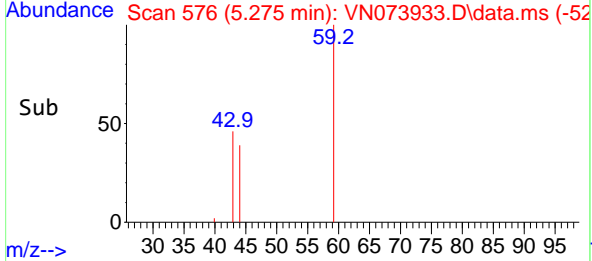
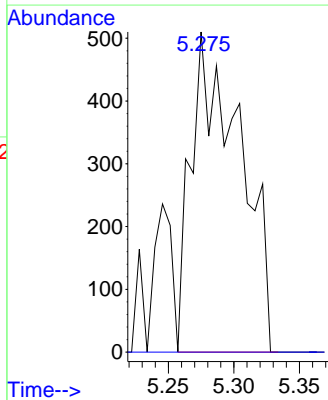
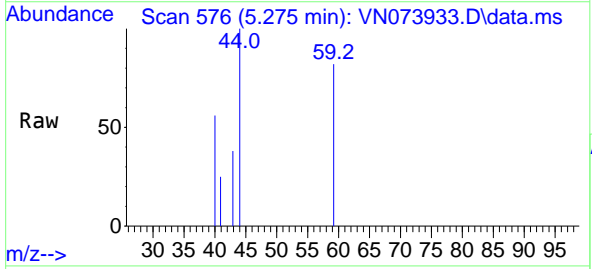


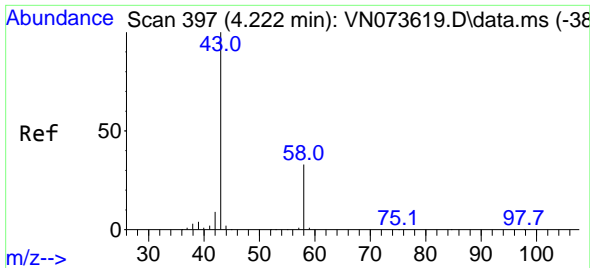
Tgt Ion:168 Resp: 616623  
 Ion Ratio Lower Upper  
 168 100  
 99 49.4 42.3 63.5



#11  
 Tert butyl alcohol  
 Concen: 0.980 ug/l  
 RT: 5.275 min Scan# 576  
 Delta R.T. -0.017 min  
 Lab File: VN073933.D  
 Acq: 16 Aug 2022 07:24

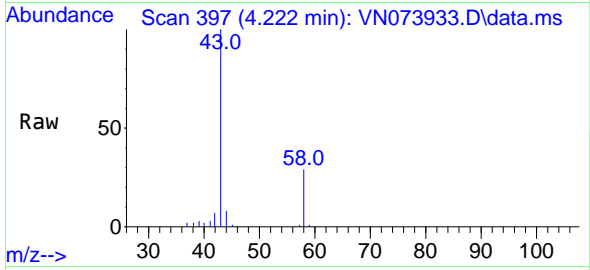
Tgt Ion: 59 Resp: 1316  
 Ion Ratio Lower Upper  
 59 100  
 57 0.0 8.3 12.5#



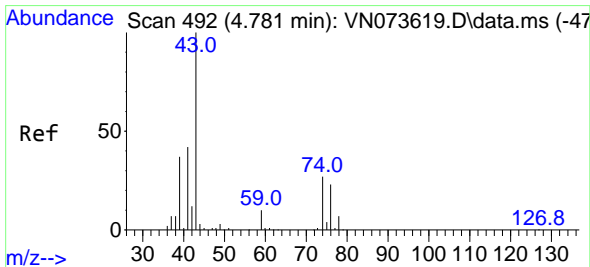
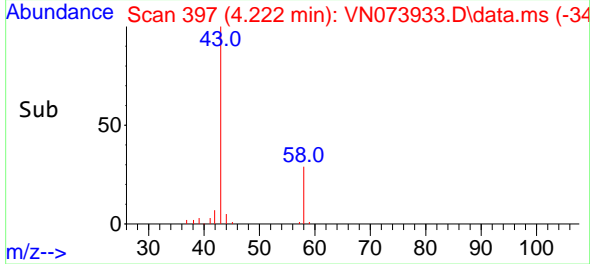
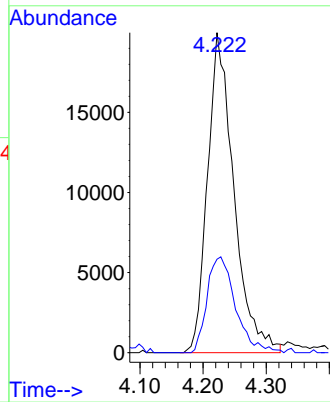


#16  
 Acetone  
 Concen: 20.412 ug/l  
 RT: 4.222 min Scan# 397  
 Delta R.T. 0.000 min  
 Lab File: VN073933.D  
 Acq: 16 Aug 2022 07:24

Instrument :  
 MSVOA\_N  
 ClientSampleId :  
 VOC-WC-1

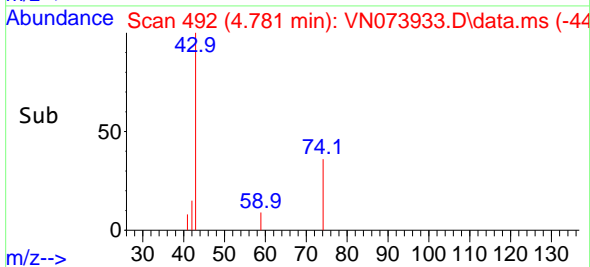
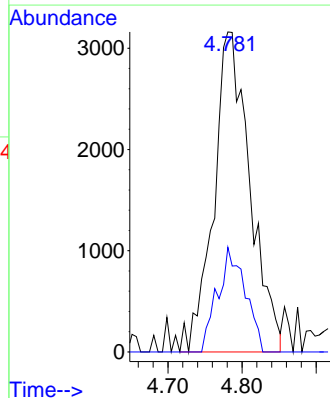
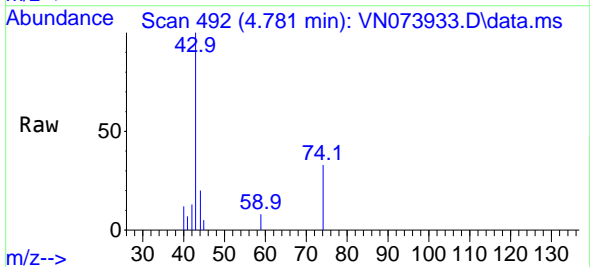


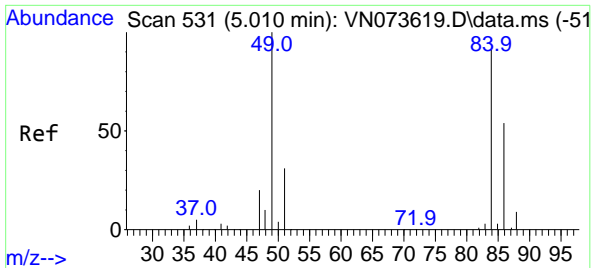
Tgt Ion: 43 Resp: 57838  
 Ion Ratio Lower Upper  
 43 100  
 58 29.2 26.0 39.0



#18  
 Methyl Acetate  
 Concen: Below Cal  
 RT: 4.781 min Scan# 492  
 Delta R.T. -0.000 min  
 Lab File: VN073933.D  
 Acq: 16 Aug 2022 07:24

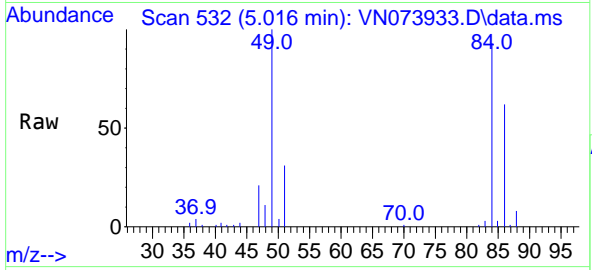
Tgt Ion: 43 Resp: 10742  
 Ion Ratio Lower Upper  
 43 100  
 74 24.9 21.6 32.4





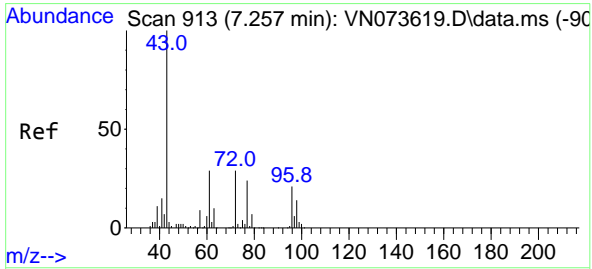
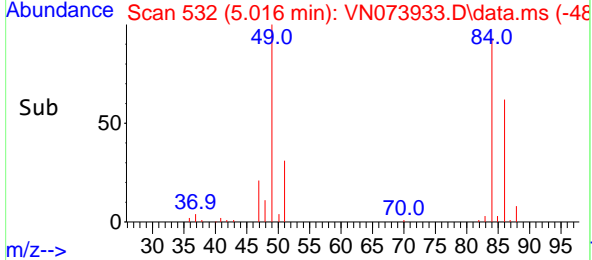
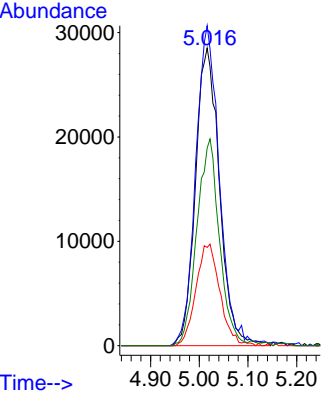
#20  
 Methylene Chloride  
 Concen: 16.320 ug/l  
 RT: 5.016 min Scan# 51  
 Delta R.T. 0.006 min  
 Lab File: VN073933.D  
 Acq: 16 Aug 2022 07:24

Instrument : MSVOA\_N  
 ClientSampleId : VOC-WC-1



Tgt Ion: 84 Resp: 97582

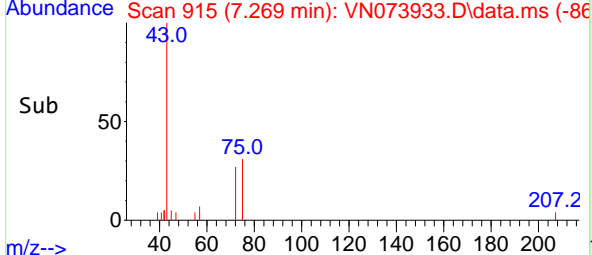
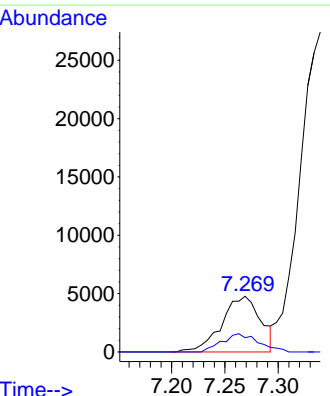
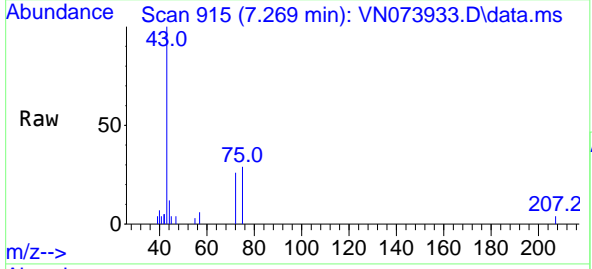
Ion	Ratio	Lower	Upper
84	100		
49	107.5	88.3	132.5
51	33.0	28.2	42.2
86	66.4	50.6	76.0

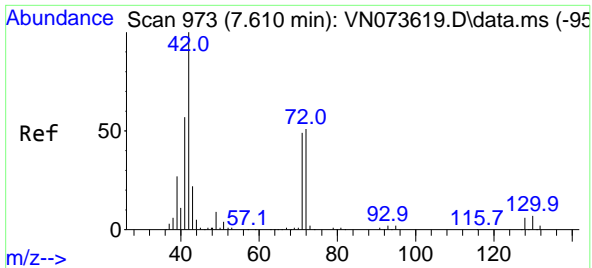


#25  
 2-Butanone  
 Concen: 2.694 ug/l  
 RT: 7.269 min Scan# 915  
 Delta R.T. 0.012 min  
 Lab File: VN073933.D  
 Acq: 16 Aug 2022 07:24

Tgt Ion: 43 Resp: 12102

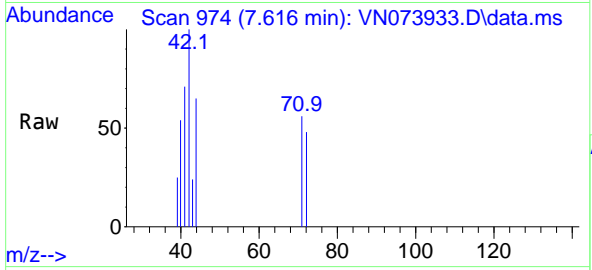
Ion	Ratio	Lower	Upper
43	100		
72	25.7	23.7	35.5





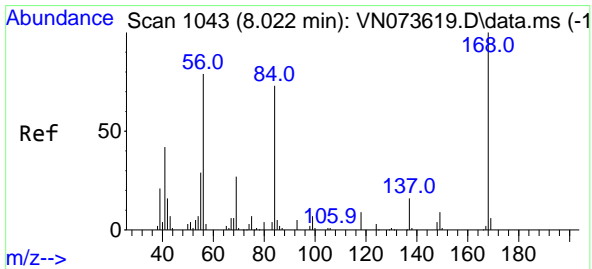
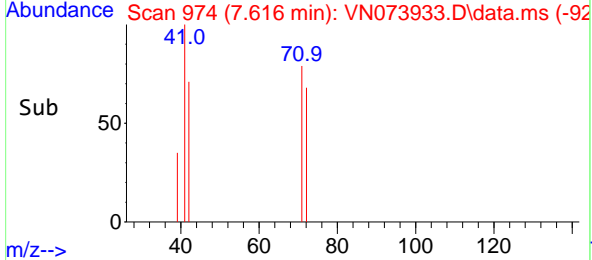
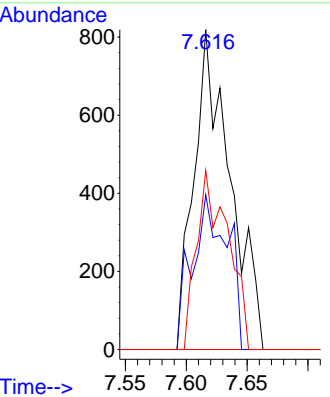
#29  
 Tetrahydrofuran  
 Concen: 0.588 ug/l  
 RT: 7.616 min Scan# 91  
 Delta R.T. 0.006 min  
 Lab File: VN073933.D  
 Acq: 16 Aug 2022 07:24

Instrument :  
 MSVOA\_N  
 ClientSampleId :  
 VOC-WC-1

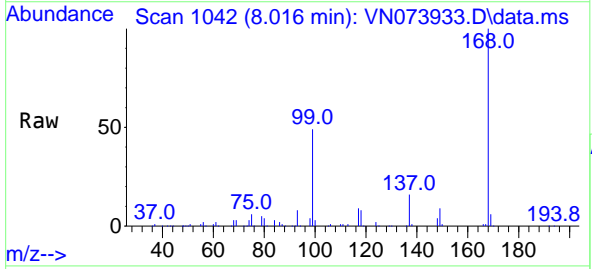


Tgt Ion: 42 Resp: 1696

Ion	Ratio	Lower	Upper
42	100		
72	46.7	39.7	59.5
71	48.8	36.6	55.0

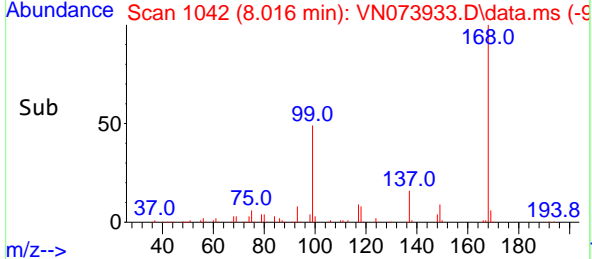
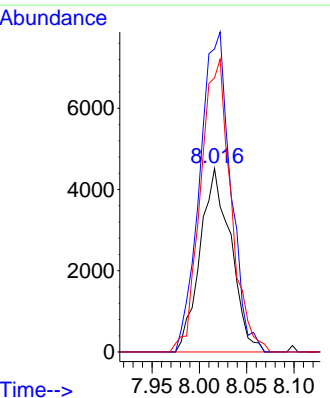


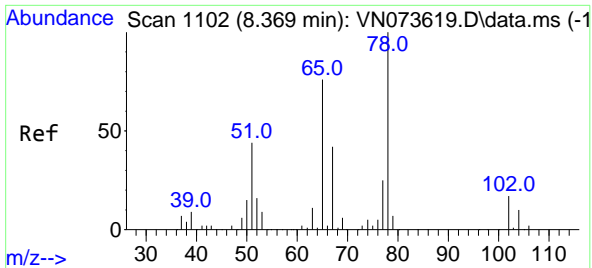
#31  
 Cyclohexane  
 Concen: 1.219 ug/l  
 RT: 8.016 min Scan# 1042  
 Delta R.T. -0.006 min  
 Lab File: VN073933.D  
 Acq: 16 Aug 2022 07:24



Tgt Ion: 56 Resp: 10202

Ion	Ratio	Lower	Upper
56	100		
69	165.1	27.8	41.8#
84	149.3	76.9	115.3#

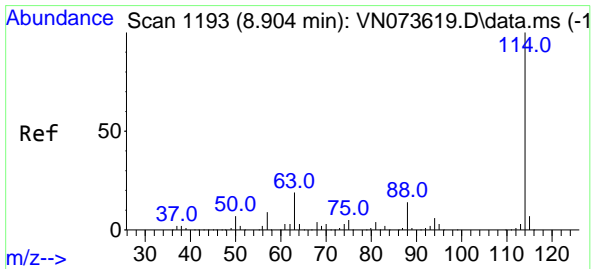
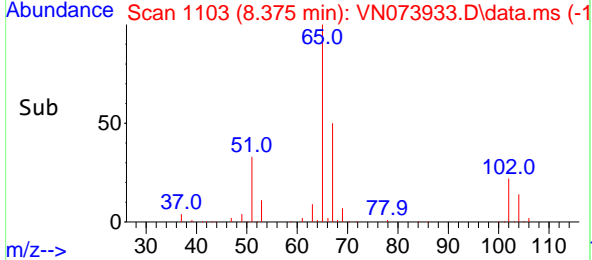
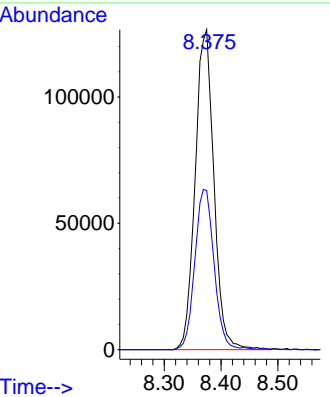
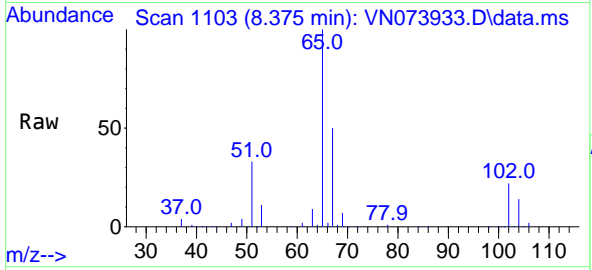




#33  
 1,2-Dichloroethane-d4  
 Concen: 48.184 ug/l  
 RT: 8.375 min Scan# 1103  
 Delta R.T. 0.006 min  
 Lab File: VN073933.D  
 Acq: 16 Aug 2022 07:24

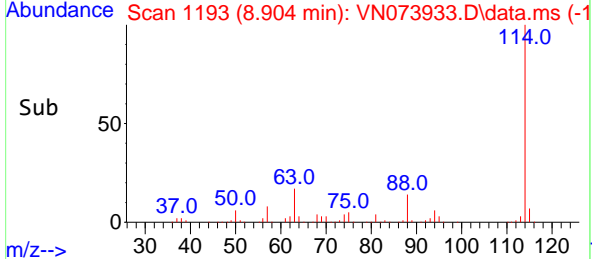
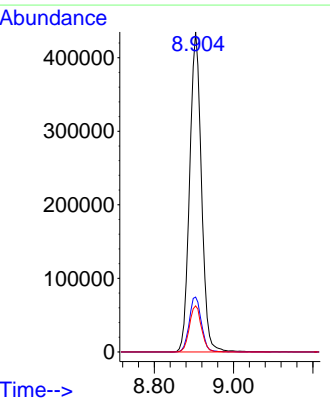
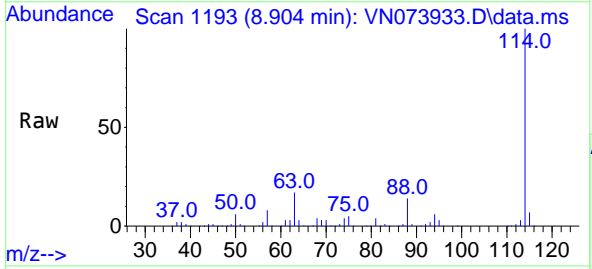
Instrument : MSVOA\_N  
 ClientSampleId : VOC-WC-1

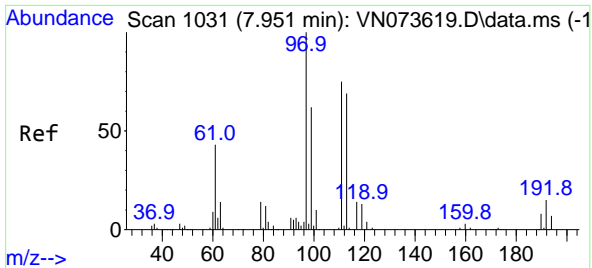
Tgt Ion: 65 Resp: 289387  
 Ion Ratio Lower Upper  
 65 100  
 67 51.6 0.0 104.8



#34  
 1,4-Difluorobenzene  
 Concen: 50.000 ug/l  
 RT: 8.904 min Scan# 1193  
 Delta R.T. 0.000 min  
 Lab File: VN073933.D  
 Acq: 16 Aug 2022 07:24

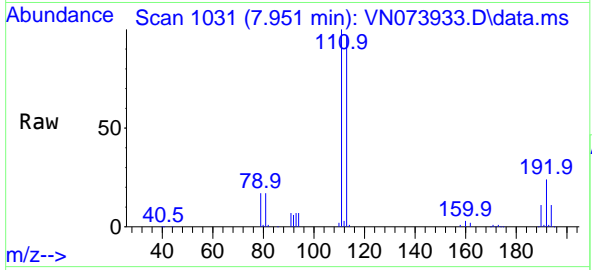
Tgt Ion: 114 Resp: 896417  
 Ion Ratio Lower Upper  
 114 100  
 63 17.2 0.0 40.0  
 88 14.4 0.0 32.6



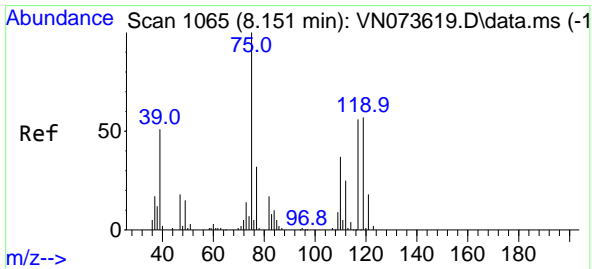
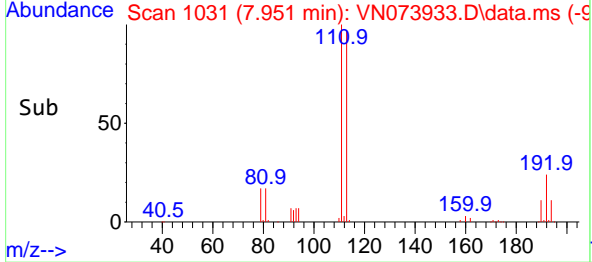
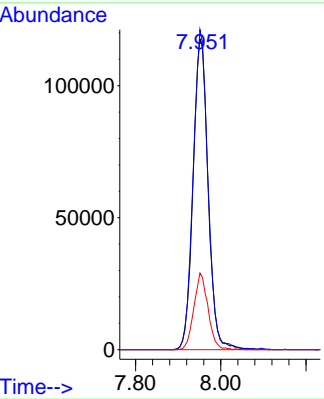


#35  
 Dibromofluoromethane  
 Concen: 54.443 ug/l  
 RT: 7.951 min Scan# 1042  
 Delta R.T. 0.000 min  
 Lab File: VN073933.D  
 Acq: 16 Aug 2022 07:24

Instrument : MSVOA\_N  
 ClientSampleId : VOC-WC-1

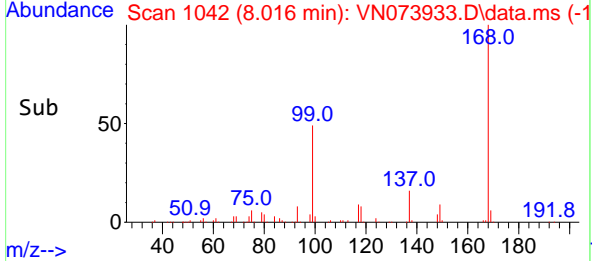
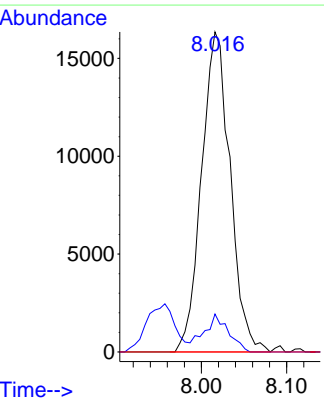
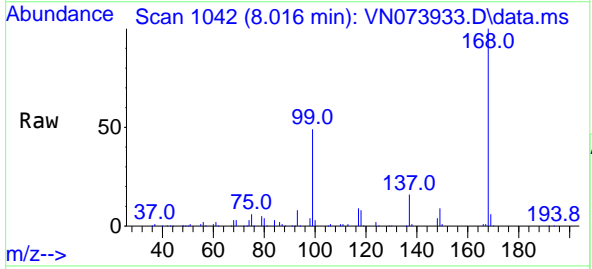


Tgt Ion: 113 Resp: 288621  
 Ion Ratio Lower Upper  
 113 100  
 111 101.8 81.4 122.0  
 192 23.1 17.0 25.6

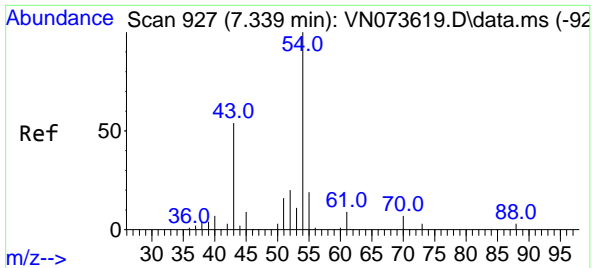


#36  
 1,1-Dichloropropene  
 Concen: 5.171 ug/l  
 RT: 8.016 min Scan# 1042  
 Delta R.T. -0.135 min  
 Lab File: VN073933.D  
 Acq: 16 Aug 2022 07:24

Tgt Ion: 75 Resp: 38075  
 Ion Ratio Lower Upper  
 75 100  
 110 9.9 18.3 54.8#  
 77 0.0 25.1 37.7#

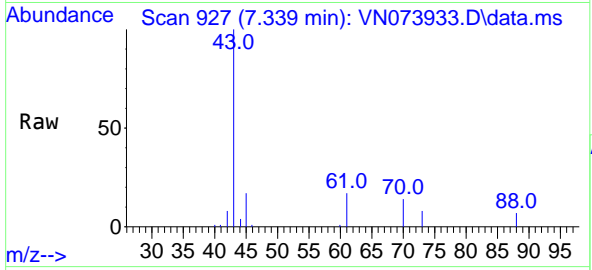






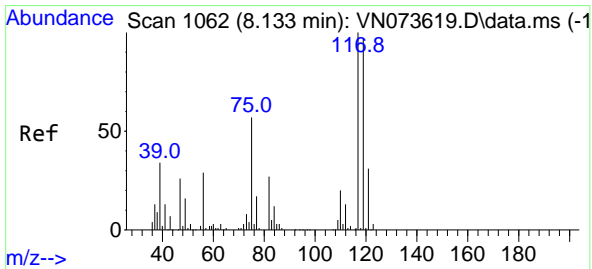
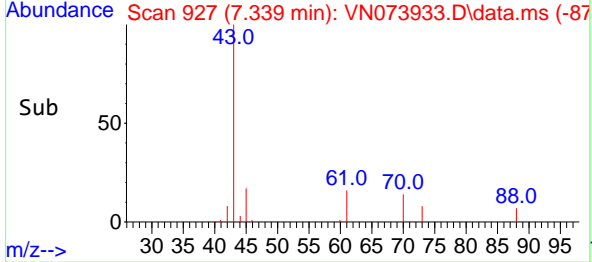
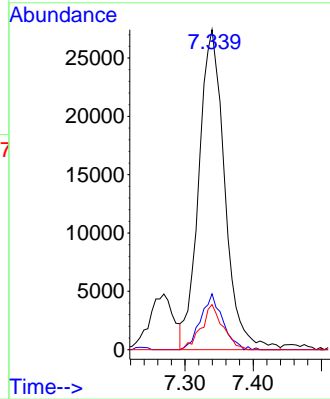
#37  
 Ethyl Acetate  
 Concen: 8.111 ug/l  
 RT: 7.339 min Scan# 91  
 Delta R.T. 0.000 min  
 Lab File: VN073933.D  
 Acq: 16 Aug 2022 07:24

Instrument : MSVOA\_N  
 ClientSampleId : VOC-WC-1



Tgt Ion: 43 Resp: 72354

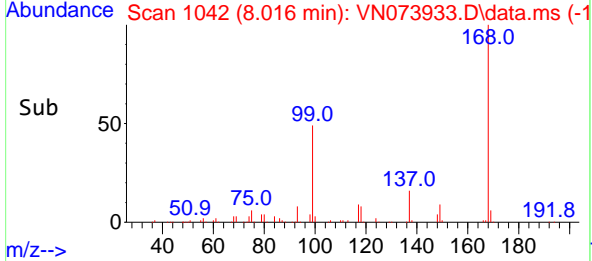
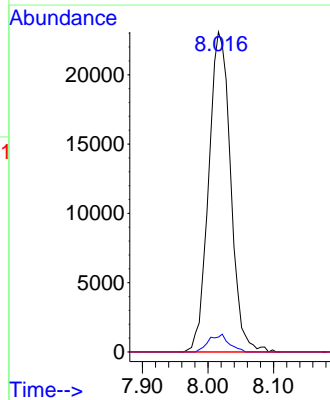
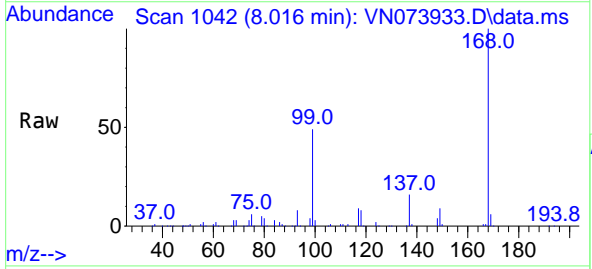
Ion	Ratio	Lower	Upper
43	100		
61	14.9	11.8	17.6
70	11.8	9.3	13.9

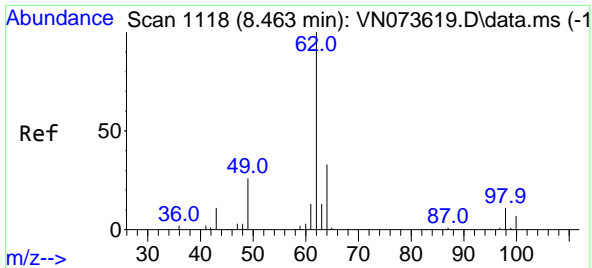


#38  
 Carbon Tetrachloride  
 Concen: 6.379 ug/l  
 RT: 8.016 min Scan# 1042  
 Delta R.T. -0.117 min  
 Lab File: VN073933.D  
 Acq: 16 Aug 2022 07:24

Tgt Ion: 117 Resp: 53693

Ion	Ratio	Lower	Upper
117	100		
119	4.6	75.8	113.8#
121	0.0	24.6	37.0#



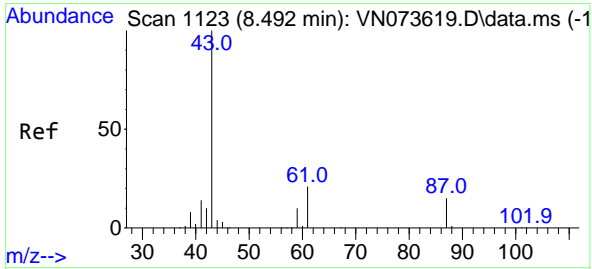
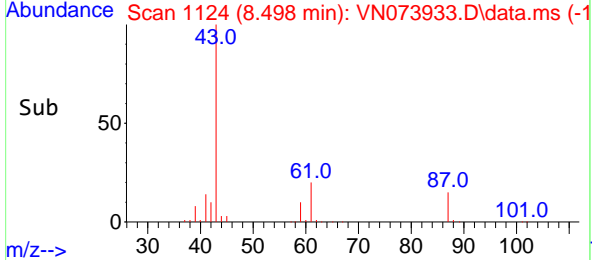
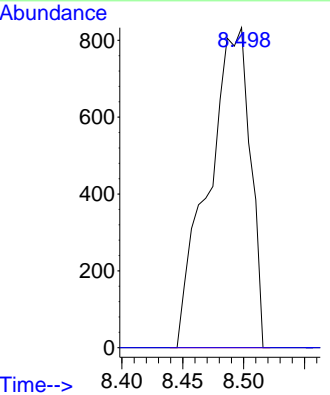
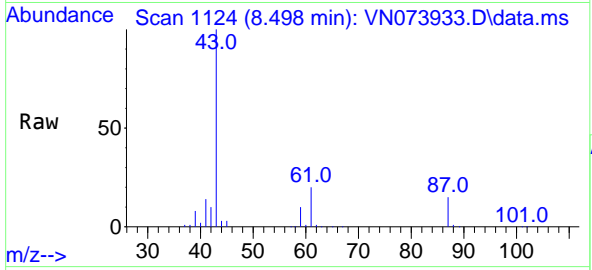


#42  
 1,2-Dichloroethane  
 Concen: 0.249 ug/l  
 RT: 8.498 min Scan# 1118  
 Delta R.T. 0.035 min  
 Lab File: VN073933.D  
 Acq: 16 Aug 2022 07:24

Instrument : MSVOA\_N  
 Client Sample Id : VOC-WC-1

Tgt Ion: 62 Resp: 1991

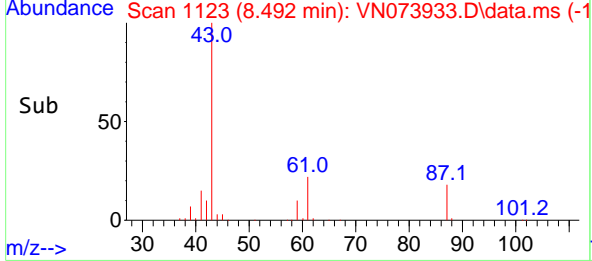
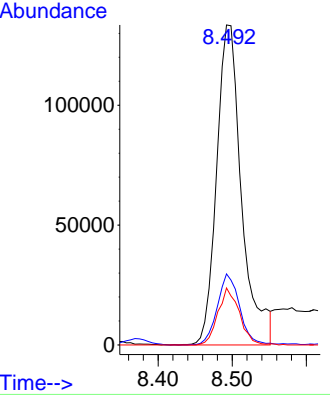
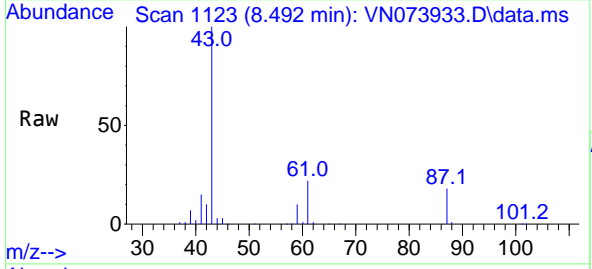
Ion	Ratio	Lower	Upper
62	100		
98	0.0	0.0	19.4

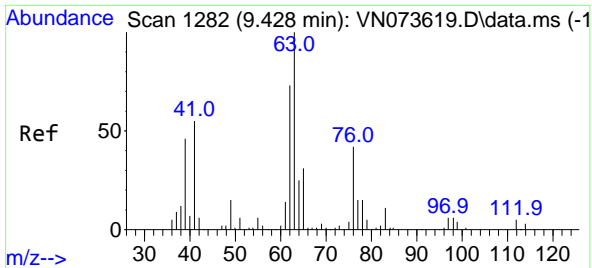


#43  
 Isopropyl Acetate  
 Concen: 24.604 ug/l  
 RT: 8.492 min Scan# 1123  
 Delta R.T. 0.000 min  
 Lab File: VN073933.D  
 Acq: 16 Aug 2022 07:24

Tgt Ion: 43 Resp: 312672

Ion	Ratio	Lower	Upper
43	100		
61	19.9	21.9	32.9#
87	15.4	12.0	18.0

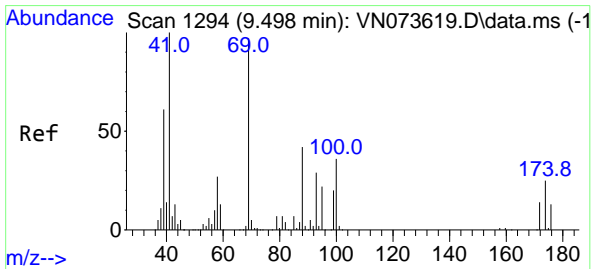
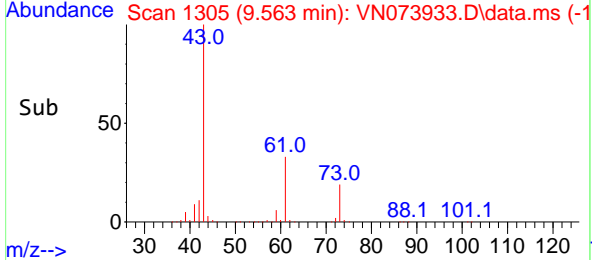
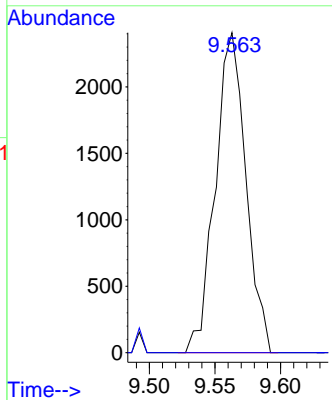
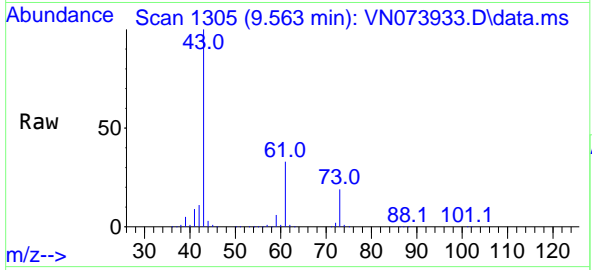




#45  
 1,2-Dichloropropane  
 Concen: 0.702 ug/l  
 RT: 9.563 min Scan# 11  
 Delta R.T. 0.135 min  
 Lab File: VN073933.D  
 Acq: 16 Aug 2022 07:24

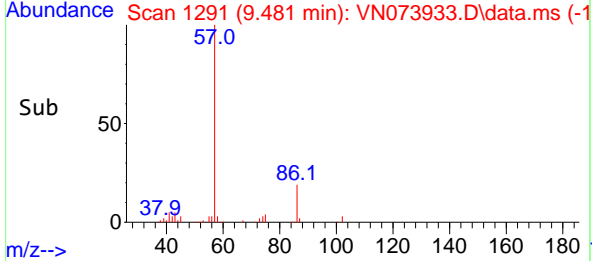
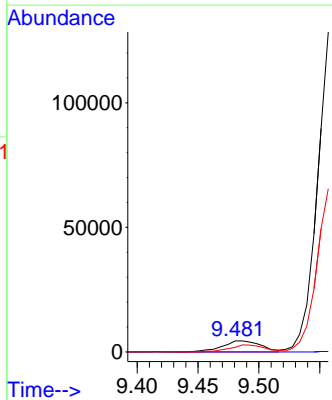
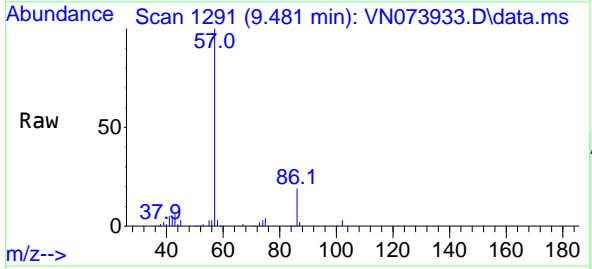
Instrument : MSVOA\_N  
 ClientSampleId : VOC-WC-1

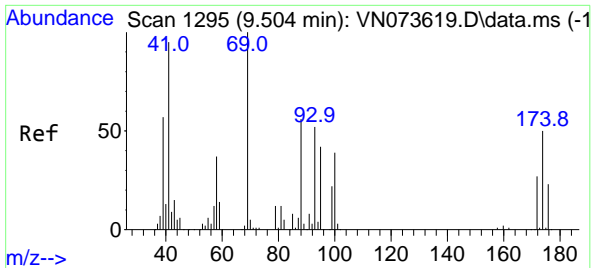
Tgt Ion: 63 Resp: 3908  
 Ion Ratio Lower Upper  
 63 100  
 65 0.0 24.9 37.3#



#48  
 Methyl methacrylate  
 Concen: 1.814 ug/l  
 RT: 9.481 min Scan# 1291  
 Delta R.T. -0.017 min  
 Lab File: VN073933.D  
 Acq: 16 Aug 2022 07:24

Tgt Ion: 41 Resp: 9866  
 Ion Ratio Lower Upper  
 41 100  
 69 0.0 74.7 112.1#  
 39 58.1 45.6 68.4

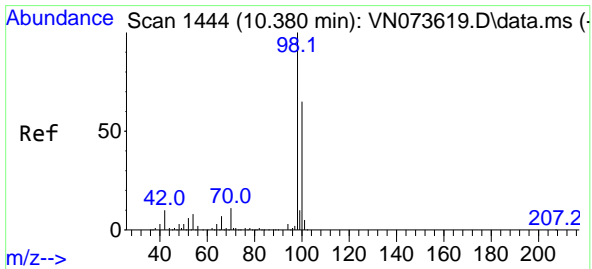
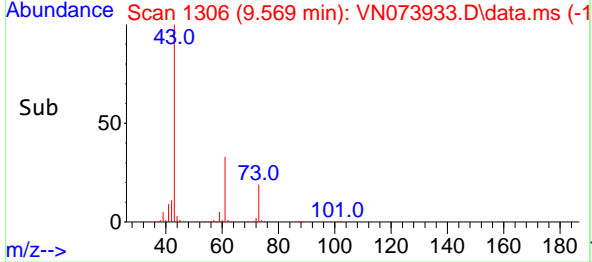
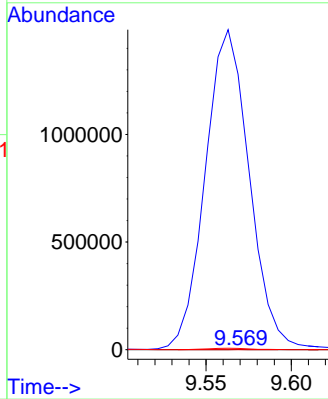
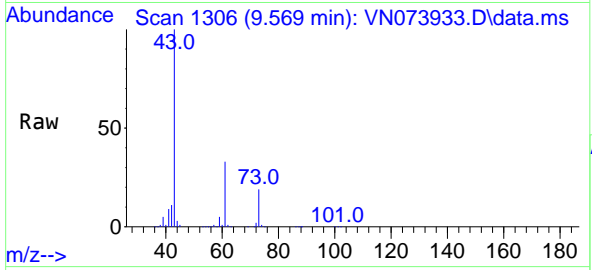




#49  
 1,4-Dioxane  
 Concen: 4.422 ug/l  
 RT: 9.569 min Scan# 111  
 Delta R.T. 0.065 min  
 Lab File: VN073933.D  
 Acq: 16 Aug 2022 07:24

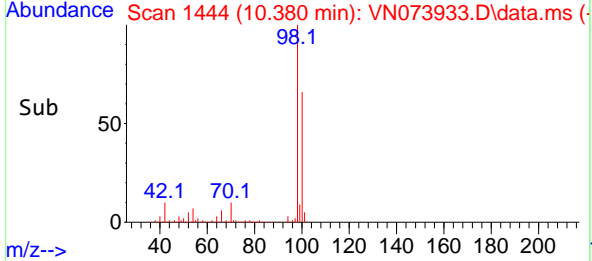
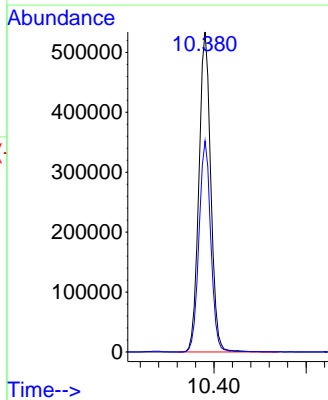
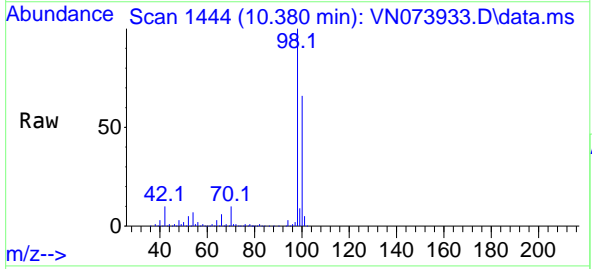
Instrument : MSVOA\_N  
 ClientSampleId : VOC-WC-1

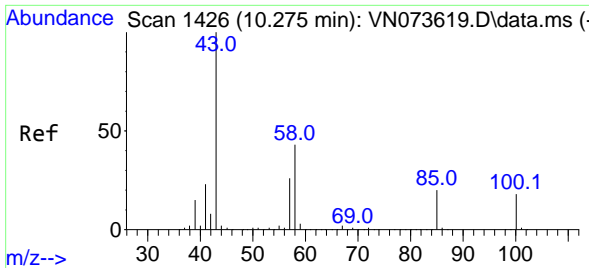
Tgt Ion: 88 Resp: 715  
 Ion Ratio Lower Upper  
 88 100  
 43 376591.6 20.2 30.4#  
 58 1728.4 54.2 81.4#



#50  
 Toluene-d8  
 Concen: 46.599 ug/l  
 RT: 10.380 min Scan# 1444  
 Delta R.T. 0.000 min  
 Lab File: VN073933.D  
 Acq: 16 Aug 2022 07:24

Tgt Ion: 98 Resp: 956741  
 Ion Ratio Lower Upper  
 98 100  
 100 65.8 52.6 78.8

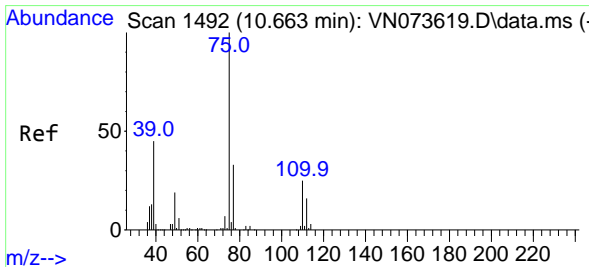
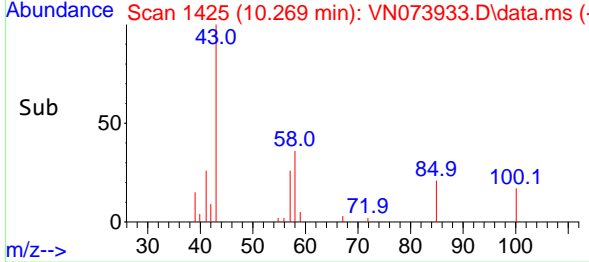
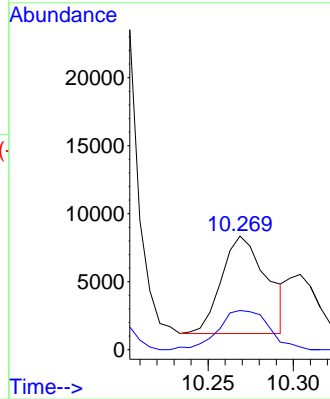
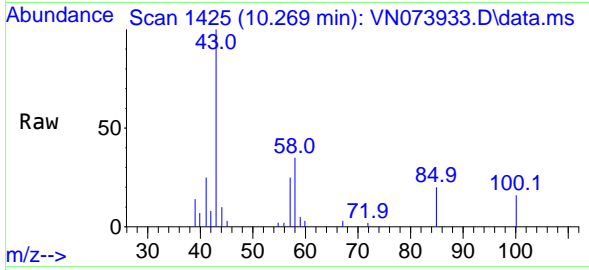




#51  
 4-Methyl-2-Pentanone  
 Concen: 1.541 ug/l  
 RT: 10.269 min Scan# 1425  
 Delta R.T. -0.006 min  
 Lab File: VN073933.D  
 Acq: 16 Aug 2022 07:24

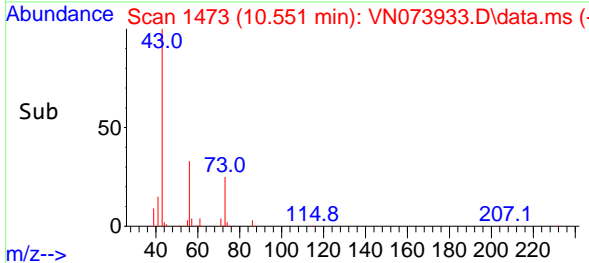
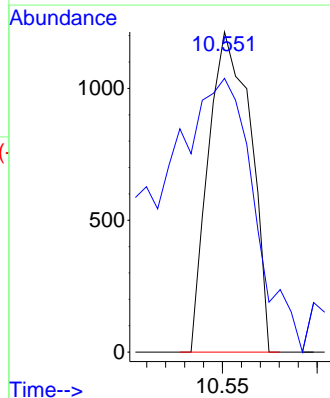
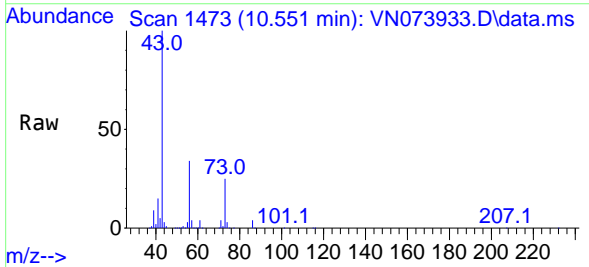
Instrument : MSVOA\_N  
 ClientSampleId : VOC-WC-1

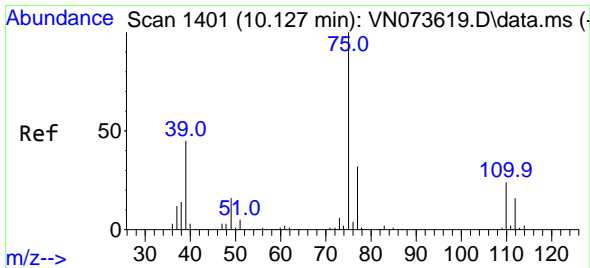
Tgt Ion: 43 Resp: 13243  
 Ion Ratio Lower Upper  
 43 100  
 58 45.0 34.1 51.1



#53  
 t-1,3-Dichloropropene  
 Concen: 0.221 ug/l  
 RT: 10.551 min Scan# 1473  
 Delta R.T. -0.112 min  
 Lab File: VN073933.D  
 Acq: 16 Aug 2022 07:24

Tgt Ion: 75 Resp: 1878  
 Ion Ratio Lower Upper  
 75 100  
 77 66.0 25.6 38.4#

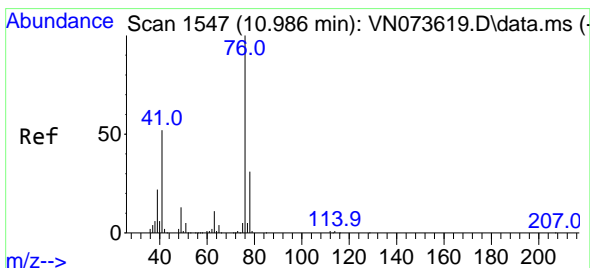
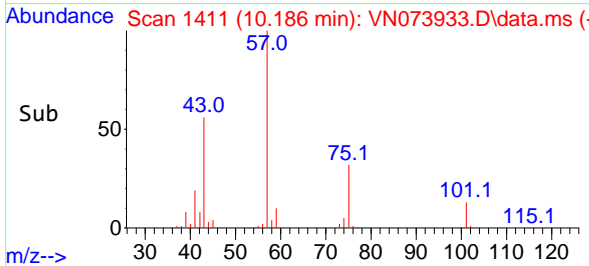
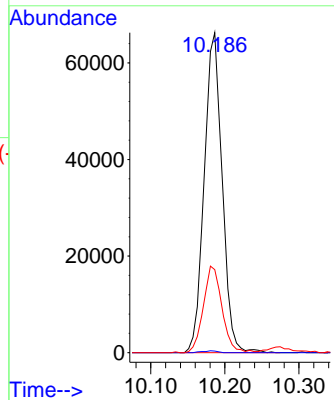
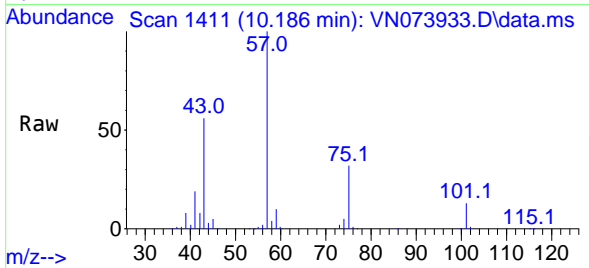




#54  
 cis-1,3-Dichloropropene  
 Concen: 11.996 ug/l  
 RT: 10.186 min Scan# 14  
 Delta R.T. 0.059 min  
 Lab File: VN073933.D  
 Acq: 16 Aug 2022 07:24

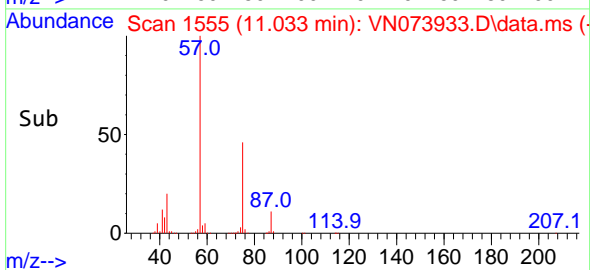
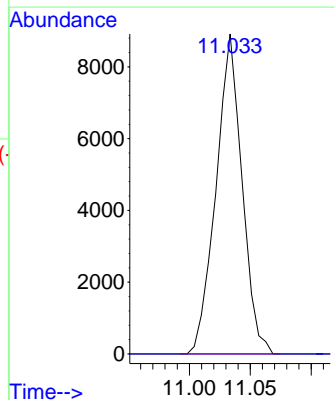
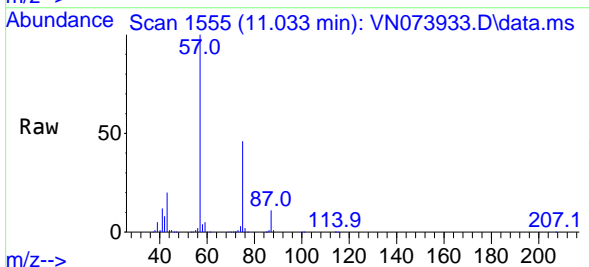
Instrument :  
 MSVOA\_N  
 ClientSampleId :  
 VOC-WC-1

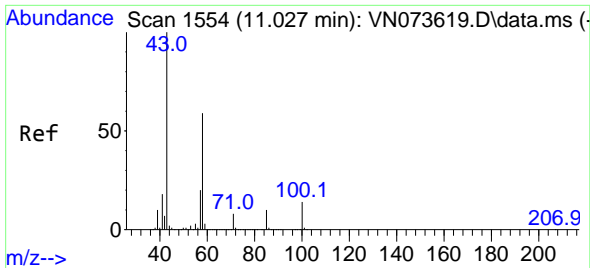
Tgt Ion: 75 Resp: 111482  
 Ion Ratio Lower Upper  
 75 100  
 77 0.5 25.2 37.8#  
 39 26.0 35.7 53.5#



#57  
 1,3-Dichloropropane  
 Concen: 1.314 ug/l  
 RT: 11.033 min Scan# 1555  
 Delta R.T. 0.047 min  
 Lab File: VN073933.D  
 Acq: 16 Aug 2022 07:24

Tgt Ion: 76 Resp: 13240  
 Ion Ratio Lower Upper  
 76 100  
 78 0.0 26.2 39.2#

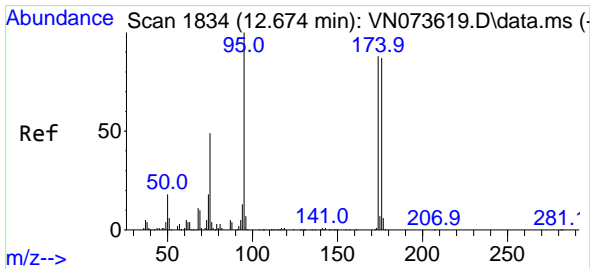
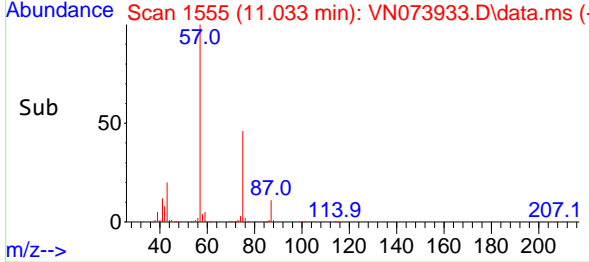
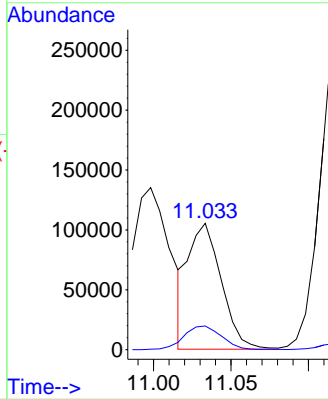
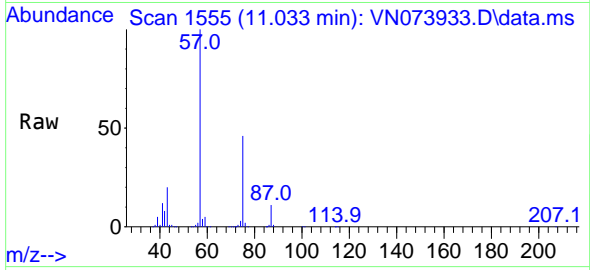




#59  
 2-Hexanone  
 Concen: 23.712 ug/l  
 RT: 11.033 min Scan# 11  
 Delta R.T. 0.006 min  
 Lab File: VN073933.D  
 Acq: 16 Aug 2022 07:24

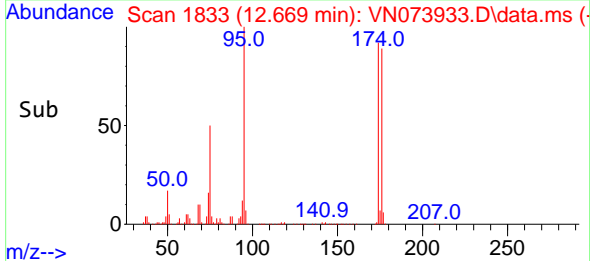
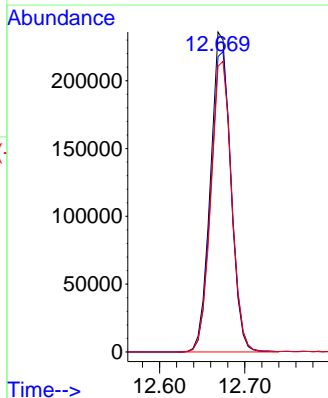
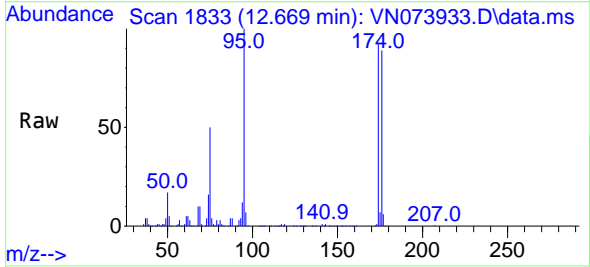
Instrument : MSVOA\_N  
 ClientSampleId : VOC-WC-1

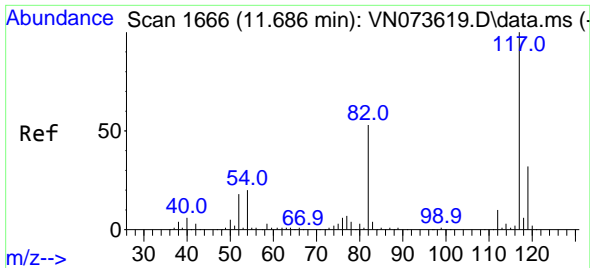
Tgt Ion: 43 Resp: 156796  
 Ion Ratio Lower Upper  
 43 100  
 58 21.6 29.7 89.1#



#62  
 4-Bromofluorobenzene  
 Concen: 56.834 ug/l  
 RT: 12.669 min Scan# 1833  
 Delta R.T. -0.005 min  
 Lab File: VN073933.D  
 Acq: 16 Aug 2022 07:24

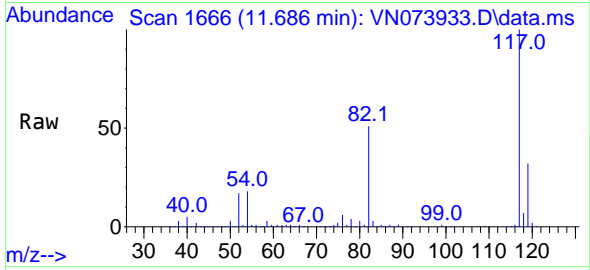
Tgt Ion: 95 Resp: 387266  
 Ion Ratio Lower Upper  
 95 100  
 174 95.8 0.0 167.6  
 176 93.2 0.0 163.4



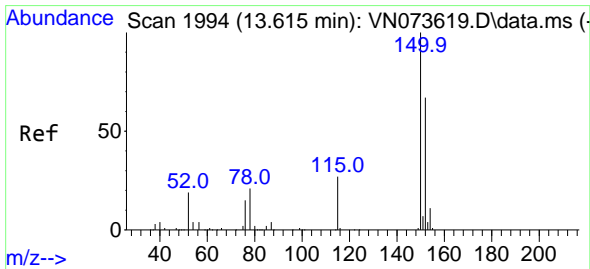
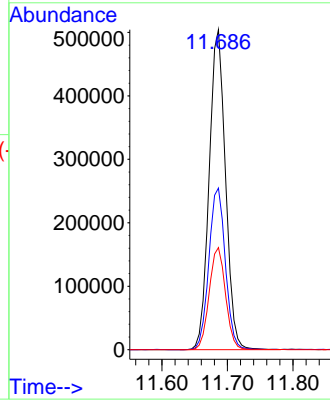
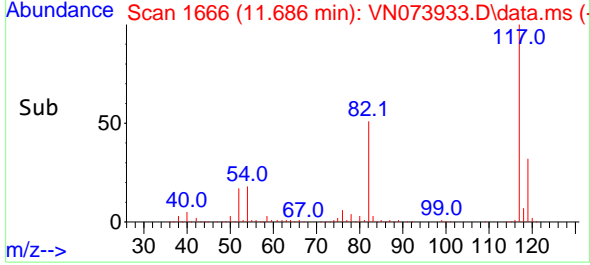


#63  
 Chlorobenzene-d5  
 Concen: 50.000 ug/l  
 RT: 11.686 min Scan# 1  
 Delta R.T. 0.000 min  
 Lab File: VN073933.D  
 Acq: 16 Aug 2022 07:24

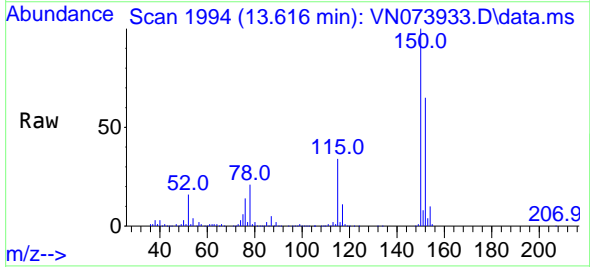
Instrument :  
 MSVOA\_N  
 ClientSampleId :  
 VOC-WC-1



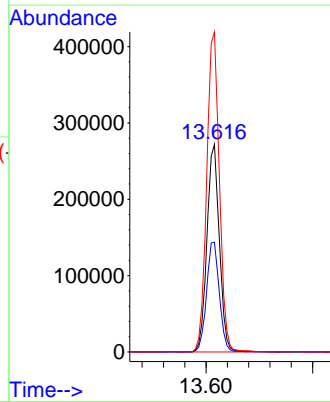
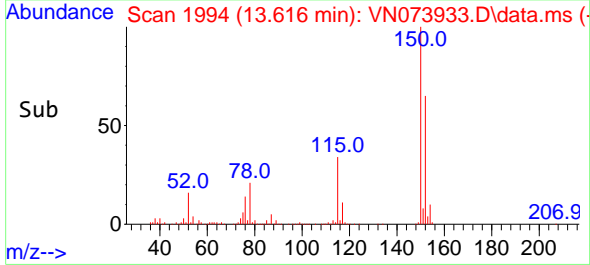
Tgt Ion:117 Resp: 872816  
 Ion Ratio Lower Upper  
 117 100  
 82 50.5 44.2 66.2  
 119 31.9 25.4 38.0



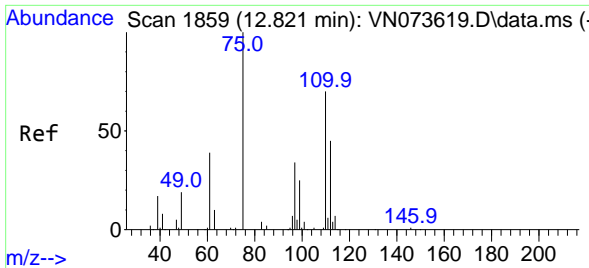
#72  
 1,4-Dichlorobenzene-d4  
 Concen: 50.000 ug/l  
 RT: 13.616 min Scan# 1994  
 Delta R.T. 0.001 min  
 Lab File: VN073933.D  
 Acq: 16 Aug 2022 07:24



Tgt Ion:152 Resp: 440191  
 Ion Ratio Lower Upper  
 152 100  
 115 54.6 28.9 86.7  
 150 156.9 0.0 356.2



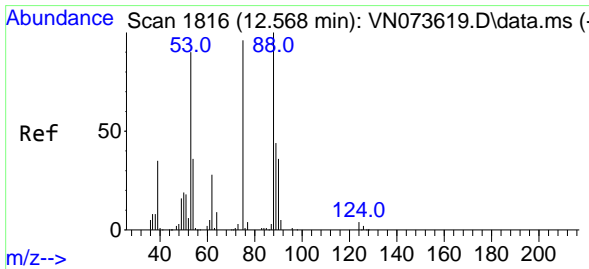
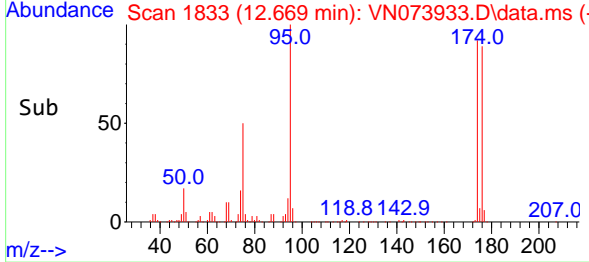
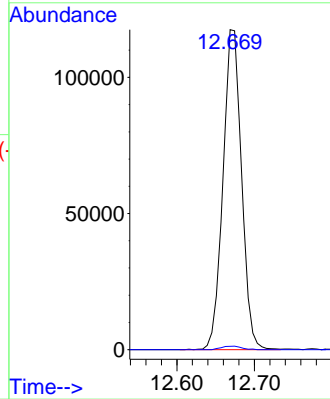
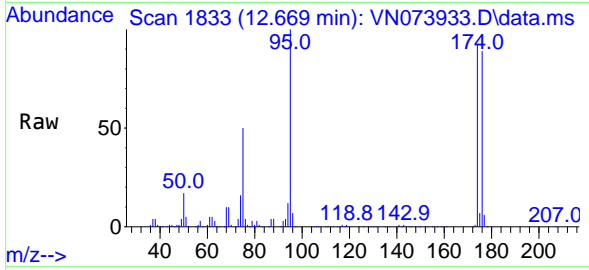




#76  
 1,2,3-Trichloropropane  
 Concen: 21.408 ug/l  
 RT: 12.669 min Scan# 1833  
 Delta R.T. -0.152 min  
 Lab File: VN073933.D  
 Acq: 16 Aug 2022 07:24

Instrument : MSVOA\_N  
 ClientSampleId : VOC-WC-1

Tgt Ion: 75 Resp: 195865  
 Ion Ratio Lower Upper  
 75 100  
 77 1.2 98.5 295.5#



#81  
 trans-1,4-Dichloro-2-butene  
 Concen: 60.887 ug/l  
 RT: 12.669 min Scan# 1833  
 Delta R.T. 0.101 min  
 Lab File: VN073933.D  
 Acq: 16 Aug 2022 07:24

Tgt Ion: 75 Resp: 195865  
 Ion Ratio Lower Upper  
 75 100  
 53 0.0 78.0 117.0#  
 89 0.0 37.2 55.8#

