

Data Path : Z:\VOASRV\HPCHEM1\MSVOA N\DATA\VN081718\
 Data File : VN050761.D
 Acq On : 18 Aug 2018 9:05
 Operator : MD\SY
 Sample : PB112140ZHE#07
 Misc : 5.00mL/MSVOA N/WATER
 ALS Vial : 50 Sample Multiplier: 1

Instrument :
 MSVOA_N
 ClientSampleId :
 PB112140ZHE#07

Quant Time: Aug 20 01:17:54 2018
 Quant Method : Z:\VOASRV\HPCHEM1\MSVOA_N\METHODS\82N081418W.M
 Quant Title : SW846 8260
 QLast Update : Tue Aug 14 08:07:08 2018
 Response via : Initial Calibration

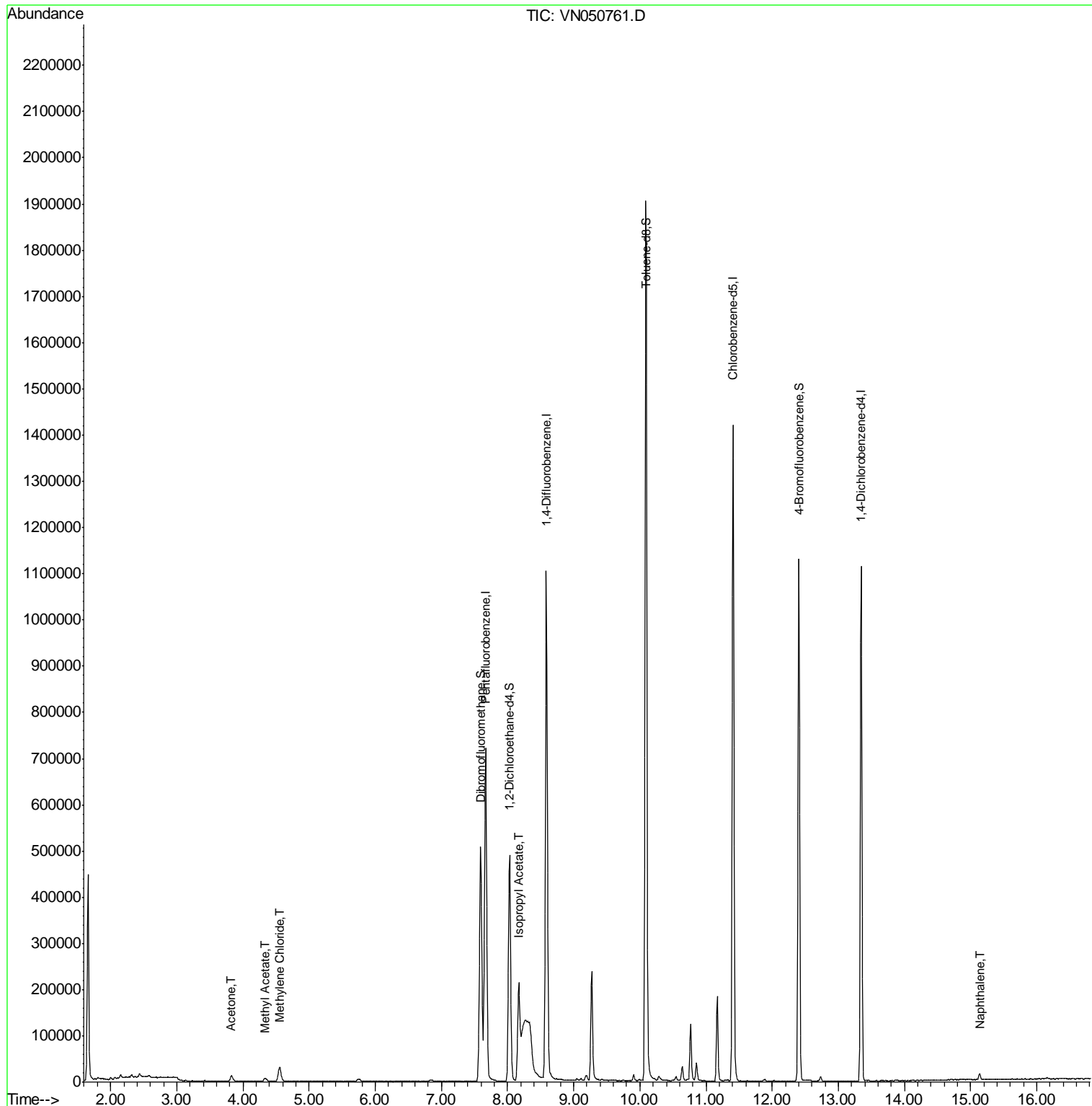
Internal Standards	R.T.	QIon	Response	Conc	Units	Dev(Min)
1) Pentafluorobenzene	7.67	168	627243	50.00	ug/l	0.00
34) 1,4-Difluorobenzene	8.59	114	1024666	50.00	ug/l	0.00
63) Chlorobenzene-d5	11.41	117	880584	50.00	ug/l	0.00
72) 1,4-Dichlorobenzene-d4	13.35	152	312931	50.00	ug/l	0.00
System Monitoring Compounds						
33) 1,2-Dichloroethane-d4	8.03	65	416465	52.67	ug/l	0.00
Spiked Amount	50.000		Recovery	=	105.34%	
35) Dibromofluoromethane	7.59	113	390526	47.74	ug/l	0.00
Spiked Amount	50.000		Recovery	=	95.48%	
50) Toluene-d8	10.09	98	1414882	45.96	ug/l	0.00
Spiked Amount	50.000		Recovery	=	91.92%	
62) 4-Bromofluorobenzene	12.40	95	384906	37.84	ug/l	0.00
Spiked Amount	50.000		Recovery	=	75.68%	
Target Compounds						
16) Acetone	3.83	43	22698	10.11	ug/l	95
18) Methyl Acetate	4.34	43	15572	1.85	ug/l	93
20) Methylene Chloride	4.56	84	24323	2.02	ug/l	98
43) Isopropyl Acetate	8.17	43	270172	22.99	ug/l	95
95) Naphthalene	15.14	128	11665	4.76	ug/l	99

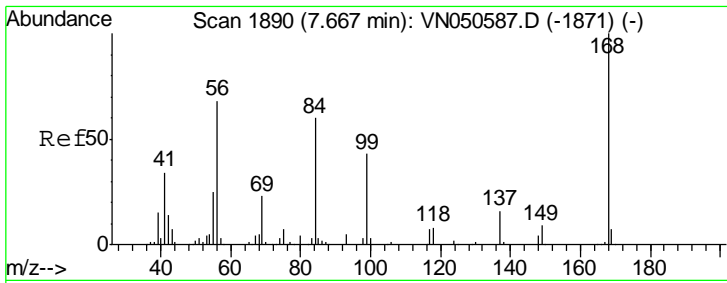
(#) = qualifier out of range (m) = manual integration (+) = signals summed

Data Path : Z:\VOASRV\HPCHEM1\MSVOA N\DATA\VN081718\
 Data File : VN050761.D
 Acq On : 18 Aug 2018 9:05
 Operator : MD\SY
 Sample : PB112140ZHE#07
 Misc : 5.00mL/MSVOA N/WATER
 ALS Vial : 50 Sample Multiplier: 1

Instrument :
 MSVOA_N
 ClientSampleId :
 PB112140ZHE#07

Quant Time: Aug 20 01:17:54 2018
 Quant Method : Z:\VOASRV\HPCHEM1\MSVOA_N\METHODS\82N081418W.M
 Quant Title : SW846 8260
 QLast Update : Tue Aug 14 08:07:08 2018
 Response via : Initial Calibration

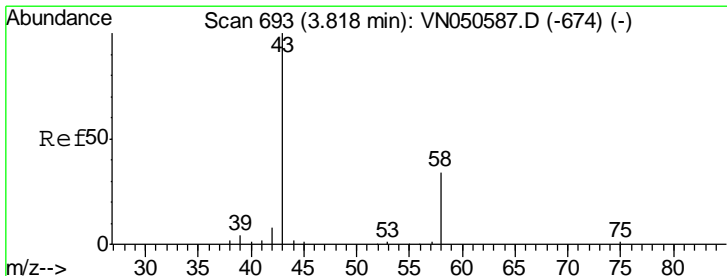
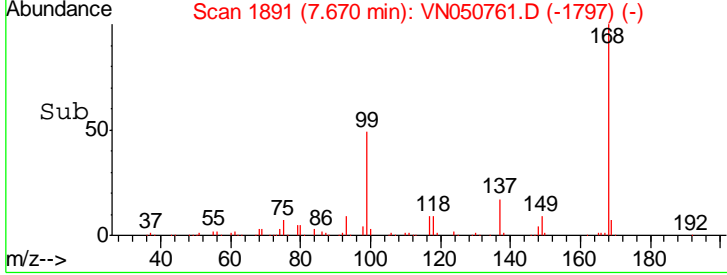
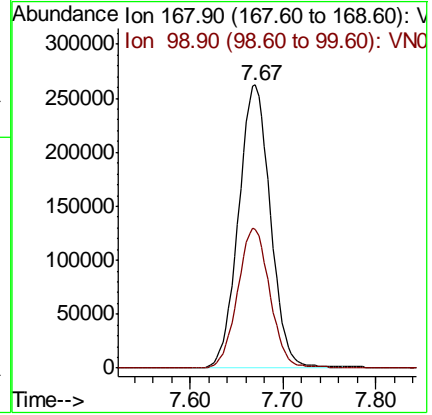
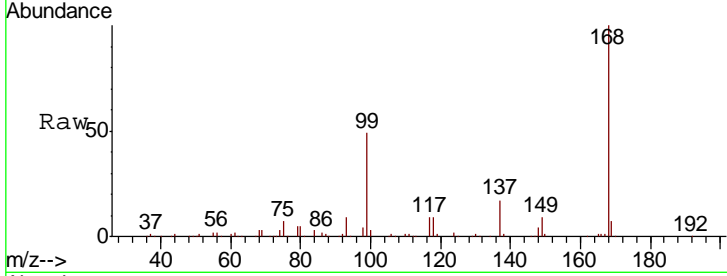




#1
 Pentafluorobenzene
 Concen: 50.00 ug/l
 RT: 7.67 min Scan# 1891
 Delta R.T. 0.00 min
 Lab File: VN050761.D
 Acq: 18 Aug 2018 9:05

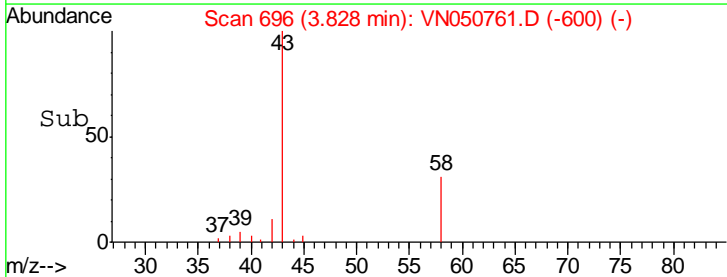
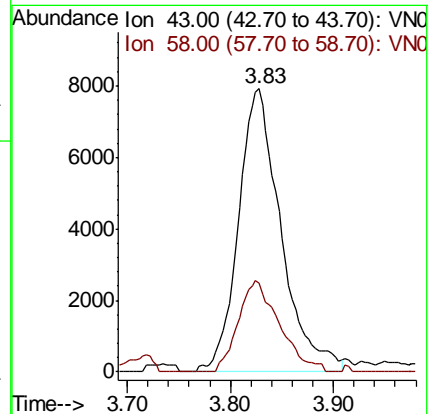
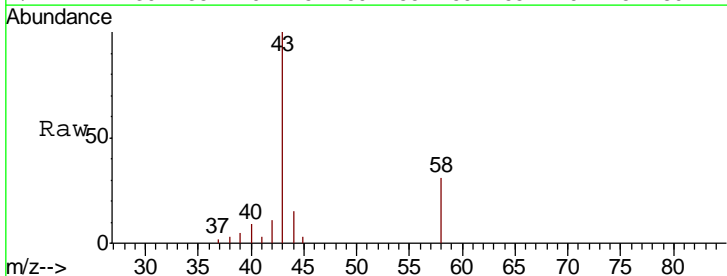
Instrument : MSVOA_N
 ClientSampleID : PB112140ZHE#07

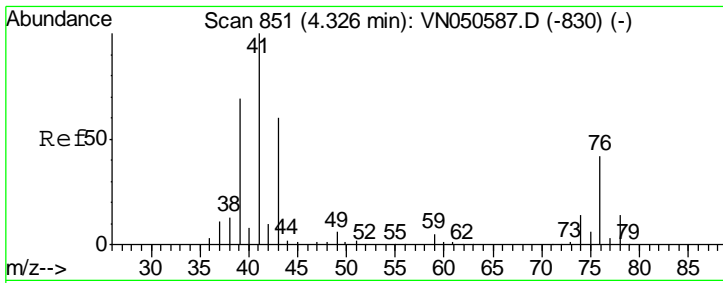
Tgt Ion	Resp	Lower	Upper
168	100		
99	49.1	40.8	61.2



#16
 Acetone
 Concen: 10.11 ug/l
 RT: 3.83 min Scan# 696
 Delta R.T. 0.01 min
 Lab File: VN050761.D
 Acq: 18 Aug 2018 9:05

Tgt Ion	Resp	Lower	Upper
43	100		
58	31.3	27.1	40.7

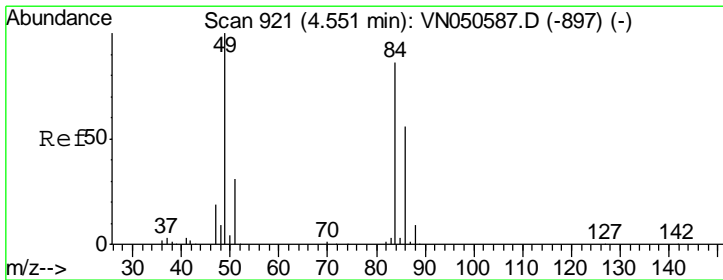
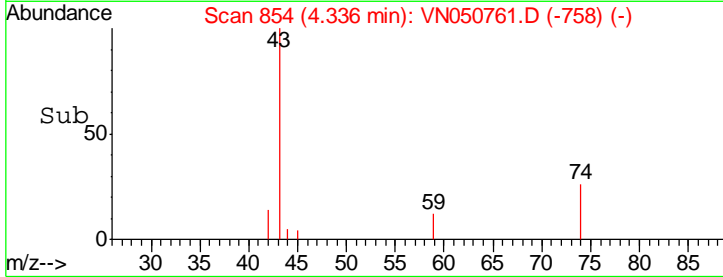
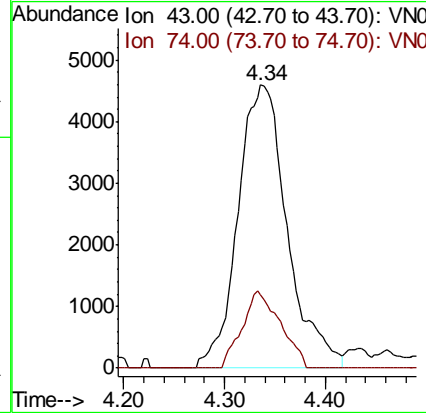
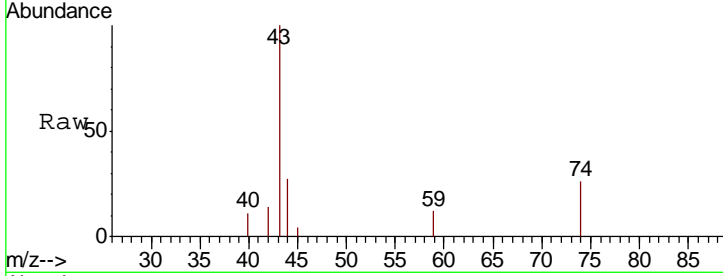




#18
 Methyl Acetate
 Concen: 1.85 ug/l
 RT: 4.34 min Scan# 854
 Delta R.T. 0.01 min
 Lab File: VN050761.D
 Acq: 18 Aug 2018 9:05

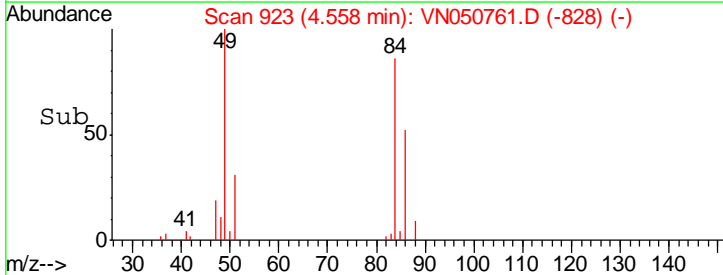
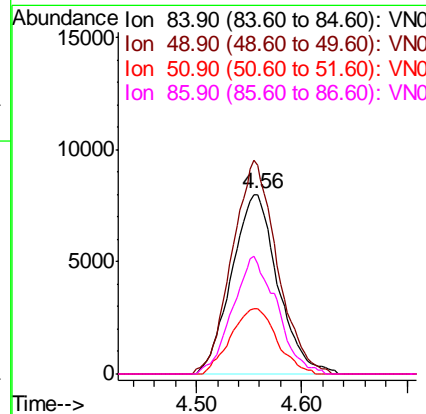
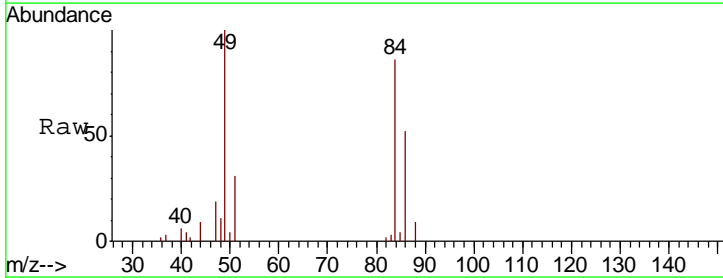
Instrument : MSVOA_N
 ClientSampleID : PB112140ZHE#07

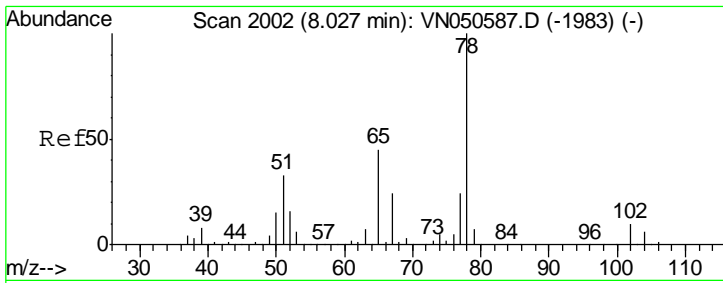
Tgt Ion	Resp	Lower	Upper
43	15572		
43	100		
74	21.1	19.7	29.5



#20
 Methylene Chloride
 Concen: 2.02 ug/l
 RT: 4.56 min Scan# 923
 Delta R.T. 0.01 min
 Lab File: VN050761.D
 Acq: 18 Aug 2018 9:05

Tgt Ion	Resp	Lower	Upper
84	24323		
84	100		
49	116.5	92.6	138.8
51	36.4	28.6	43.0
86	61.2	52.2	78.2

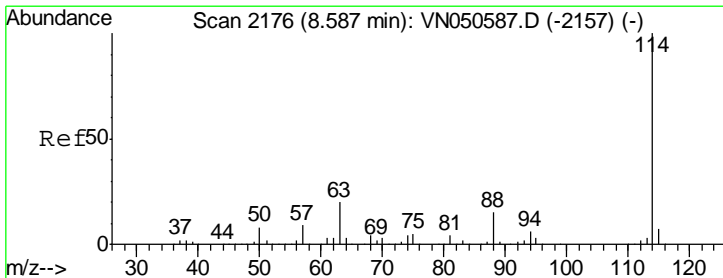
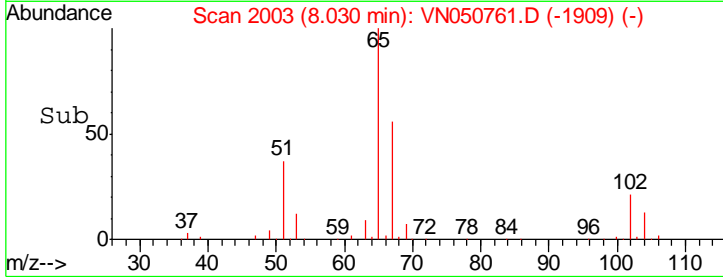
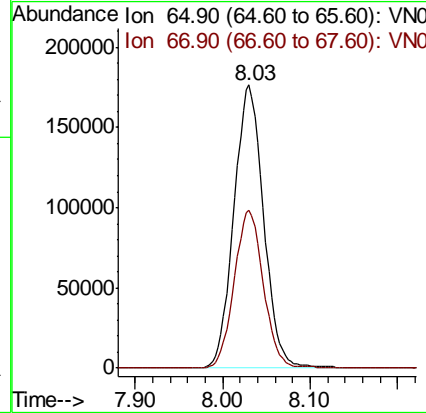
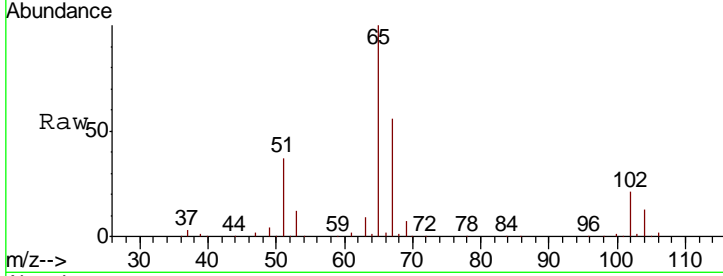




#33
 1,2-Dichloroethane-d4
 Concen: 52.67 ug/l
 RT: 8.03 min Scan# 2003
 Delta R.T. 0.00 min
 Lab File: VN050761.D
 Acq: 18 Aug 2018 9:05

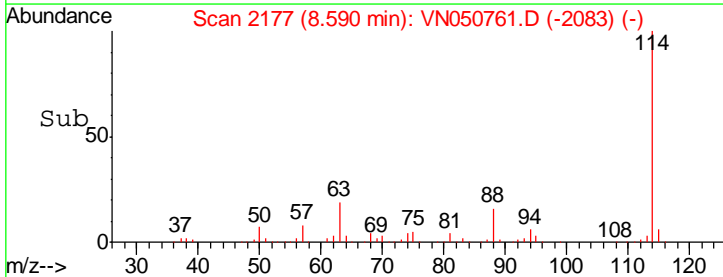
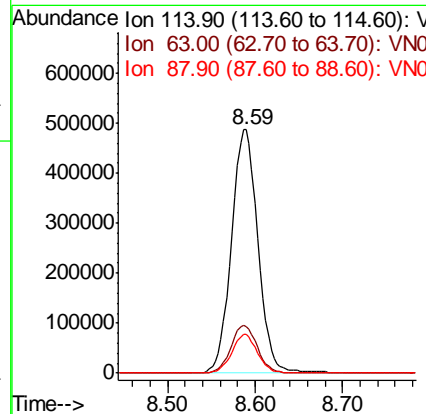
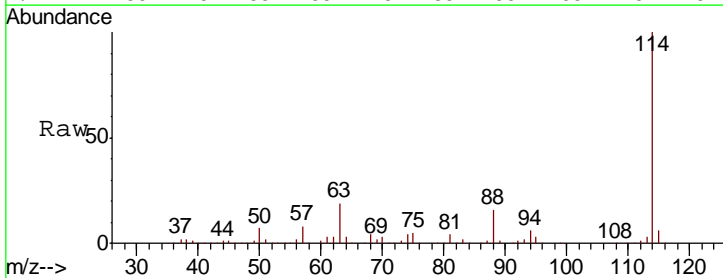
Instrument :
 MSVOA_N
 ClientSampleId :
 PB112140ZHE#07

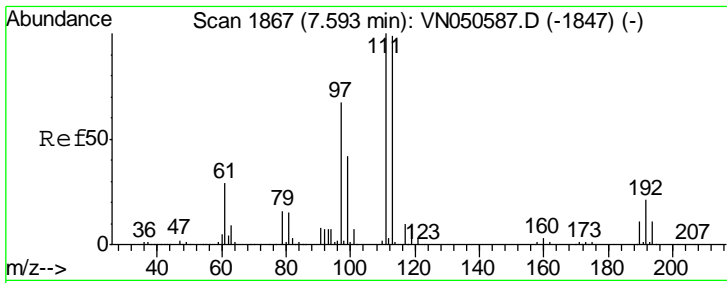
Tgt Ion: 65 Resp: 416465
 Ion Ratio Lower Upper
 65 100
 67 54.8 0.0 109.8



#34
 1,4-Difluorobenzene
 Concen: 50.00 ug/l
 RT: 8.59 min Scan# 2177
 Delta R.T. 0.00 min
 Lab File: VN050761.D
 Acq: 18 Aug 2018 9:05

Tgt Ion: 114 Resp: 1024666
 Ion Ratio Lower Upper
 114 100
 63 19.2 0.0 40.0
 88 15.8 0.0 30.8

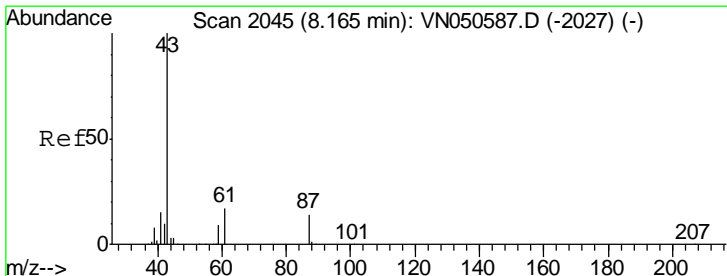
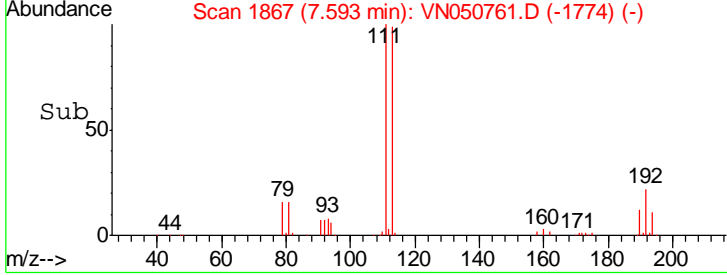
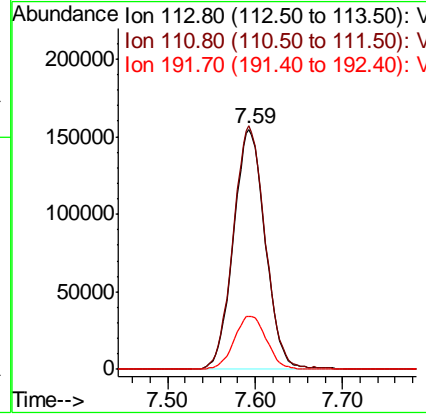
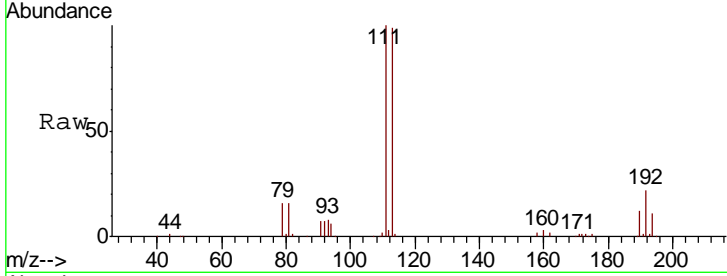




#35
 Dibromofluoromethane
 Concen: 47.74 ug/l
 RT: 7.59 min Scan# 1867
 Delta R.T. -0.00 min
 Lab File: VN050761.D
 Acq: 18 Aug 2018 9:05

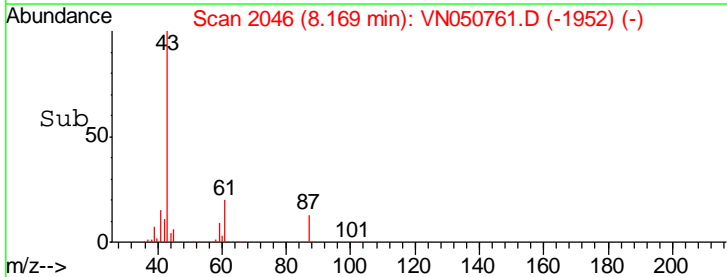
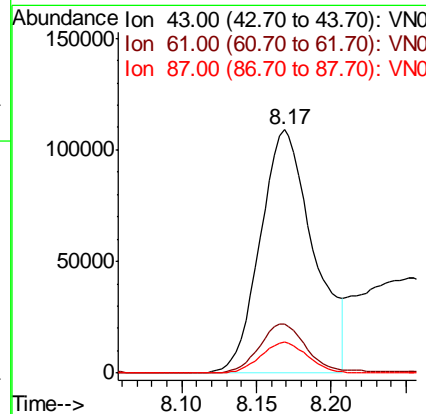
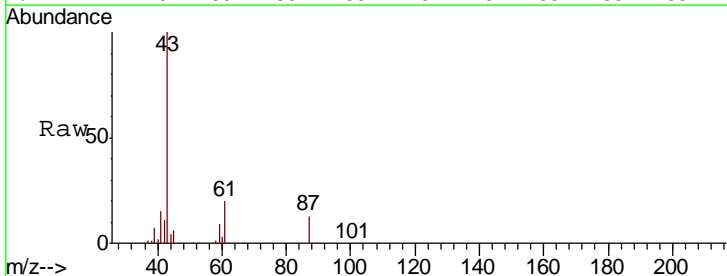
Instrument : MSVOA_N
 ClientSampled : PB112140ZHE#07

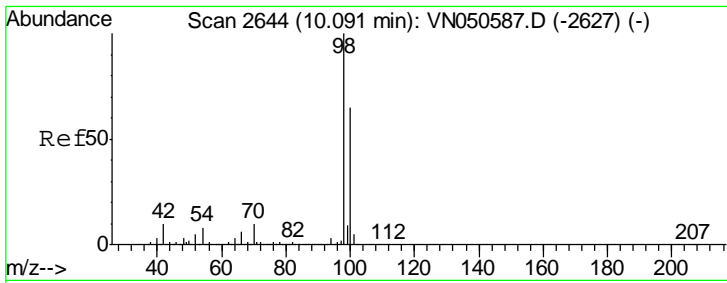
Tgt Ion	Resp	Lower	Upper
113	100		
111	102.2	81.0	121.6
192	22.6	17.6	26.4



#43
 Isopropyl Acetate
 Concen: 22.99 ug/l
 RT: 8.17 min Scan# 2046
 Delta R.T. 0.00 min
 Lab File: VN050761.D
 Acq: 18 Aug 2018 9:05

Tgt Ion	Resp	Lower	Upper
43	100		
61	18.3	16.2	24.2
87	11.3	10.9	16.3

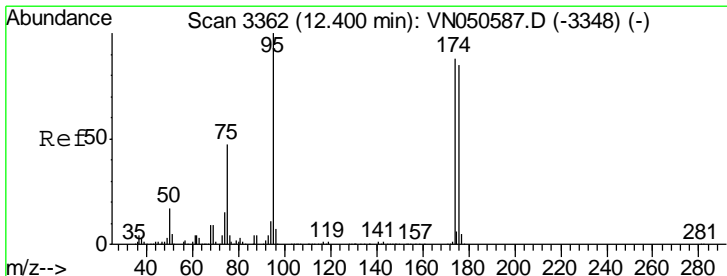
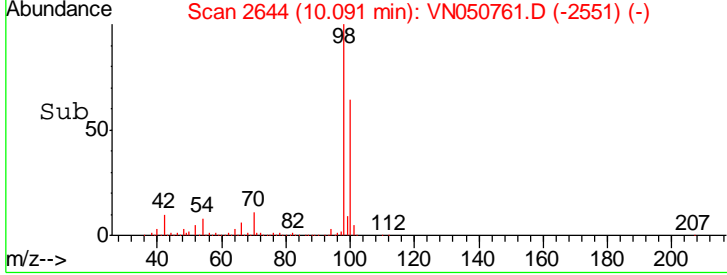
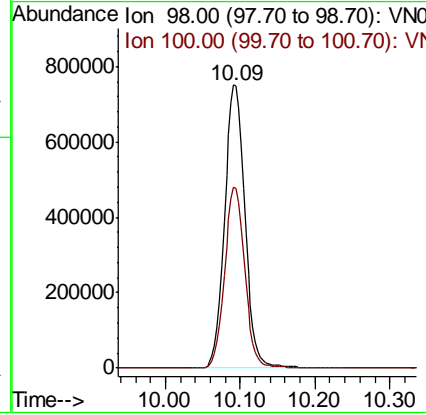
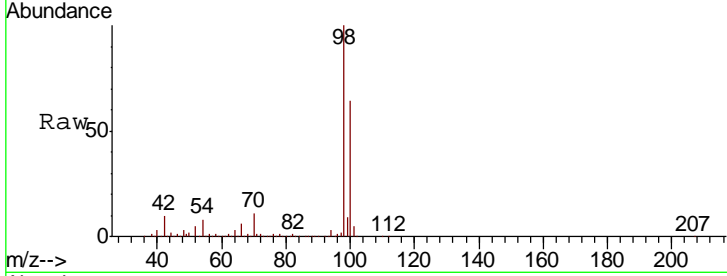




#50
 Toluene-d8
 Concen: 45.96 ug/l
 RT: 10.09 min Scan# 2644
 Delta R.T. -0.00 min
 Lab File: VN050761.D
 Acq: 18 Aug 2018 9:05

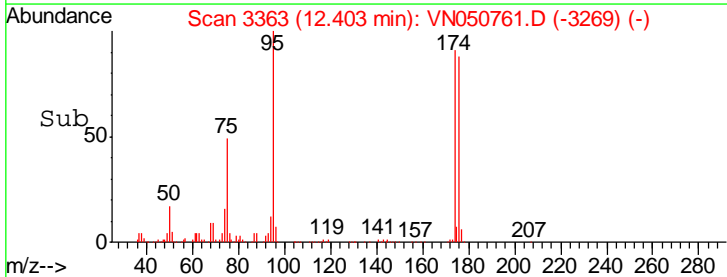
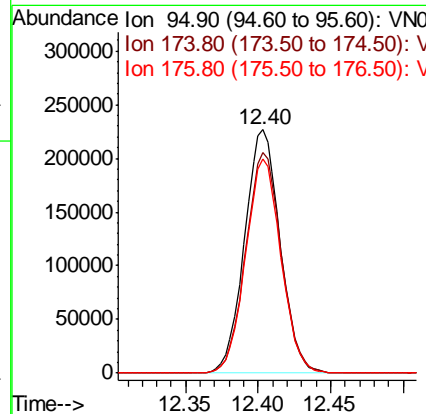
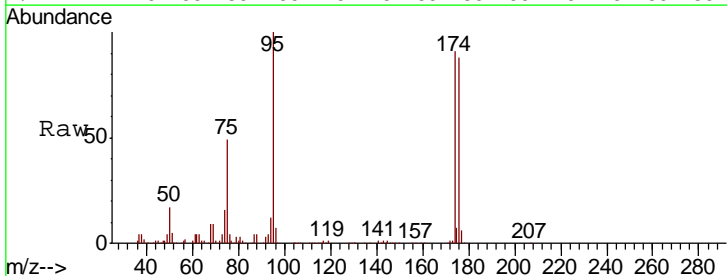
Instrument : MSVOA_N
 ClientSampled : PB112140ZHE#07

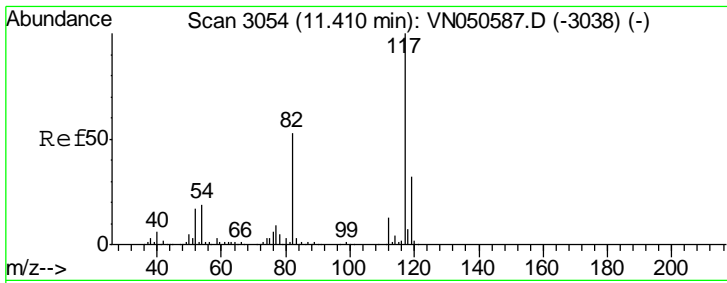
Tgt Ion	Resp	Lower	Upper
98	1414882		
98	100		
100	63.3	51.8	77.8



#62
 4-Bromofluorobenzene
 Concen: 37.84 ug/l
 RT: 12.40 min Scan# 3363
 Delta R.T. 0.00 min
 Lab File: VN050761.D
 Acq: 18 Aug 2018 9:05

Tgt Ion	Resp	Lower	Upper
95	384906		
95	100		
174	91.3	0.0	177.8
176	87.7	0.0	175.0

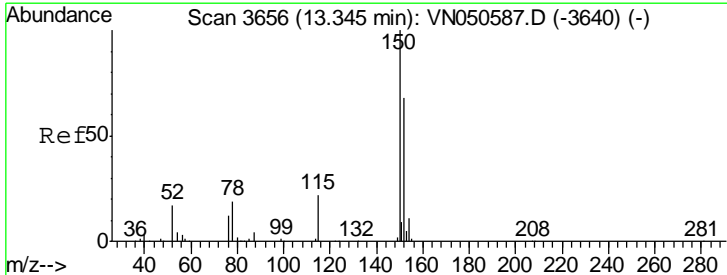
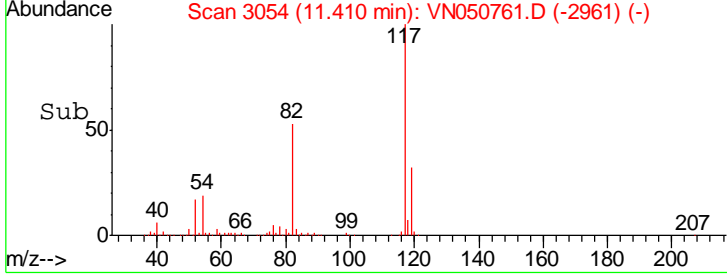
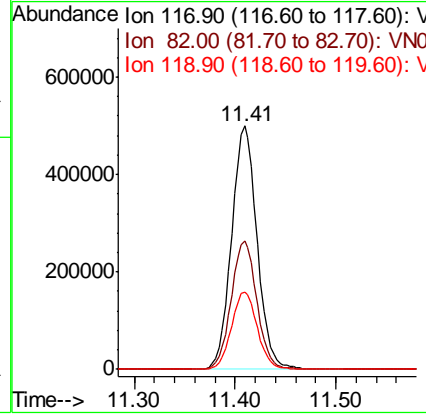
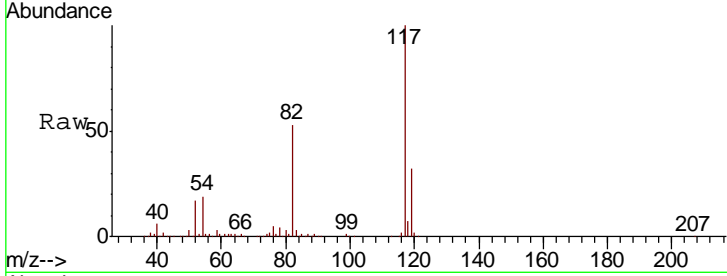




#63
 Chlorobenzene-d5
 Concen: 50.00 ug/l
 RT: 11.41 min Scan# 3054
 Delta R.T. -0.00 min
 Lab File: VN050761.D
 Acq: 18 Aug 2018 9:05

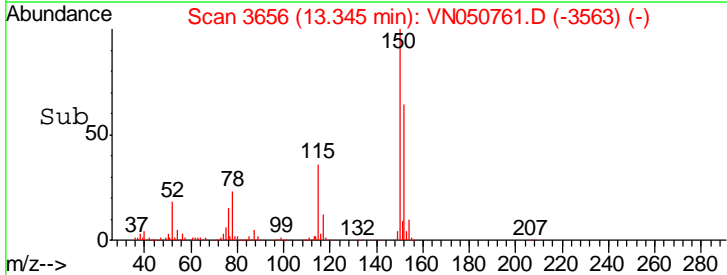
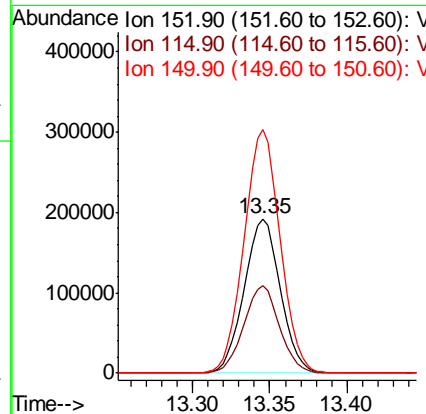
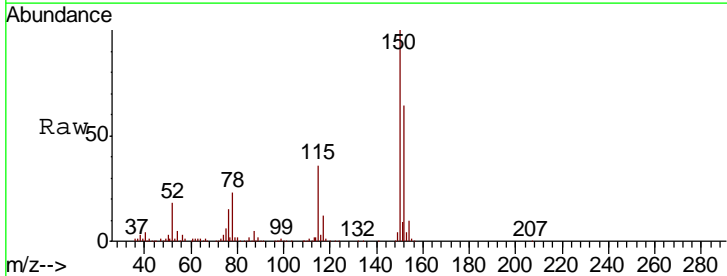
Instrument : MSVOA_N
 ClientSampled : PB112140ZHE#07

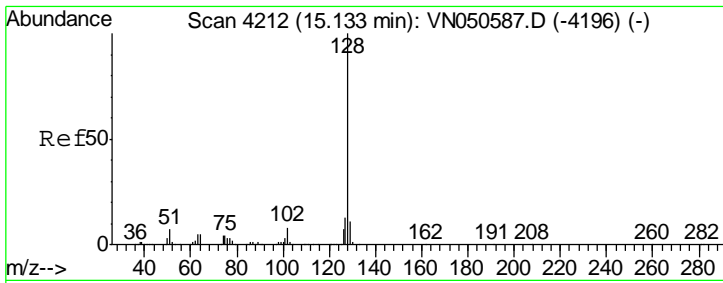
Tgt Ion	Resp	Lower	Upper
117	100		
82	52.6	42.4	63.6
119	32.0	25.8	38.8



#72
 1,4-Dichlorobenzene-d4
 Concen: 50.00 ug/l
 RT: 13.35 min Scan# 3656
 Delta R.T. -0.00 min
 Lab File: VN050761.D
 Acq: 18 Aug 2018 9:05

Tgt Ion	Resp	Lower	Upper
152	100		
115	55.8	28.1	84.2
150	157.2	0.0	347.8





#95
 Naphthalene
 Concen: 4.76 ug/l
 RT: 15.14 min Scan# 4213
 Delta R.T. 0.00 min
 Lab File: VN050761.D
 Acq: 18 Aug 2018 9:05

Instrument : MSVOA_N
 ClientSampled : PB112140ZHE#07

Tot Ion	Ion	Ratio	Lower	Upper
11665	128	100		
	127	12.6	10.3	15.5
	129	10.0	8.5	12.7

