

Data Path : Z:\voasrv\HPCHEM1\MSVOA_N\Data\VN081721\
 Data File : VN068165.D
 Acq On : 18 Aug 2021 1:28
 Operator : JC/MD
 Sample : M3435-33
 Misc : 5.00mL/MSVOA_N/WATER
 ALS Vial : 37 Sample Multiplier: 1

Instrument :
 MSVOA_N
 ClientSampleId :
 2021-08-11-EB-02

Quant Time: Aug 18 08:40:41 2021
 Quant Method : Z:\voasrv\HPCHEM1\MSVOA_N\methods\82N081721W.M
 Quant Title : SW846 8260
 QLast Update : Tue Aug 17 13:09:49 2021
 Response via : Initial Calibration

Compound	R.T.	QIon	Response	Conc	Units	Dev(Min)

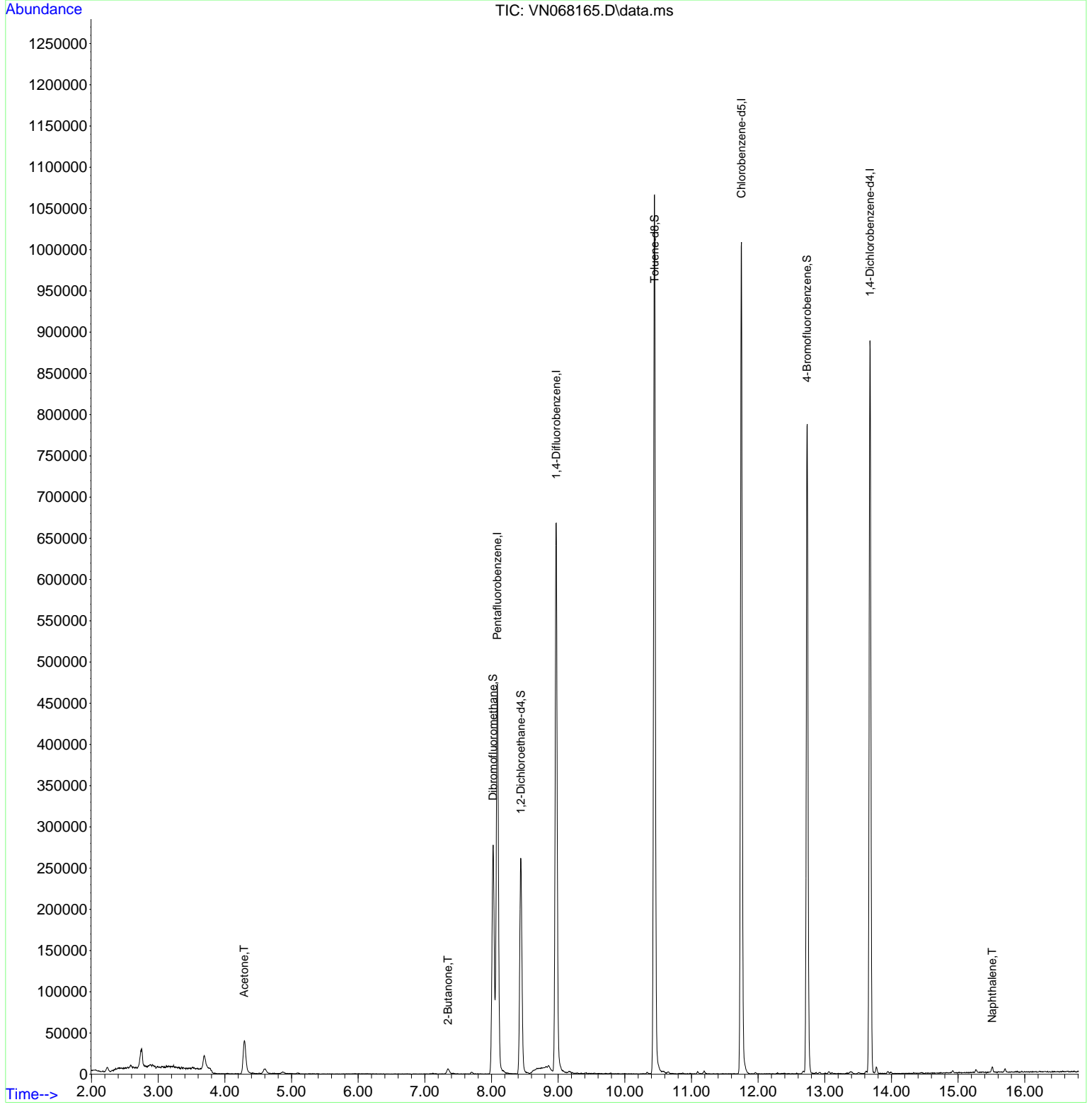
Internal Standards						
1) Pentafluorobenzene	8.088	168	390010	50.000	ug/l	# 0.00
34) 1,4-Difluorobenzene	8.971	114	645762	50.000	ug/l	0.00
63) Chlorobenzene-d5	11.749	117	647331	50.000	ug/l	# 0.00
72) 1,4-Dichlorobenzene-d4	13.678	152	270893	50.000	ug/l	0.00
System Monitoring Compounds						
33) 1,2-Dichloroethane-d4	8.440	65	222869	53.520	ug/l	0.00
Spiked Amount	50.000	Range 61 - 141	Recovery	=	107.040%	
35) Dibromofluoromethane	8.024	113	202550	49.960	ug/l	0.00
Spiked Amount	50.000	Range 69 - 133	Recovery	=	99.920%	
50) Toluene-d8	10.446	98	784050	50.754	ug/l	0.00
Spiked Amount	50.000	Range 65 - 126	Recovery	=	101.500%	
62) 4-Bromofluorobenzene	12.734	95	267407	51.998	ug/l	0.00
Spiked Amount	50.000	Range 58 - 135	Recovery	=	104.000%	
Target Compounds						
						Qvalue
16) Acetone	4.291	43	74654	61.402	ug/l	# 88
25) 2-Butanone	7.345	43	9784	5.164	ug/l	# 75
95) Naphthalene	15.512	128	6649	3.928	ug/l	# 96

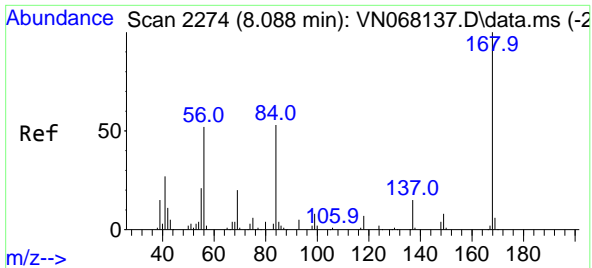
(#) = qualifier out of range (m) = manual integration (+) = signals summed

Data Path : Z:\voasrv\HPCHEM1\MSVOA_N\Data\VN081721\
 Data File : VN068165.D
 Acq On : 18 Aug 2021 1:28
 Operator : JC/MD
 Sample : M3435-33
 Misc : 5.00mL/MSVOA_N/WATER
 ALS Vial : 37 Sample Multiplier: 1

Instrument :
 MSVOA_N
 ClientSampleId :
 2021-08-11-EB-02

Quant Time: Aug 18 08:40:41 2021
 Quant Method : Z:\voasrv\HPCHEM1\MSVOA_N\methods\82N081721W.M
 Quant Title : SW846 8260
 QLast Update : Tue Aug 17 13:09:49 2021
 Response via : Initial Calibration

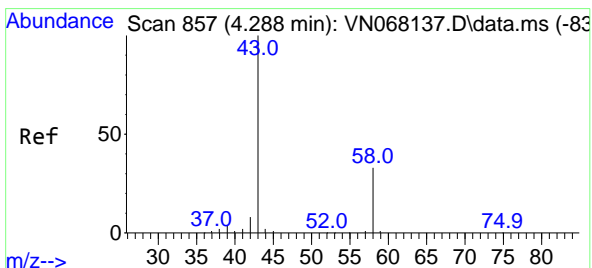
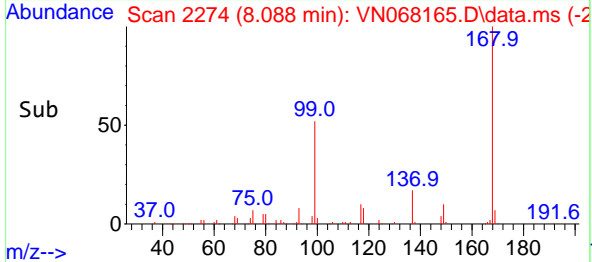
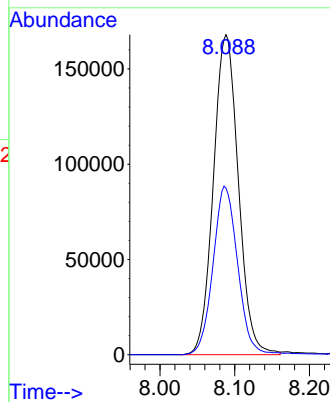
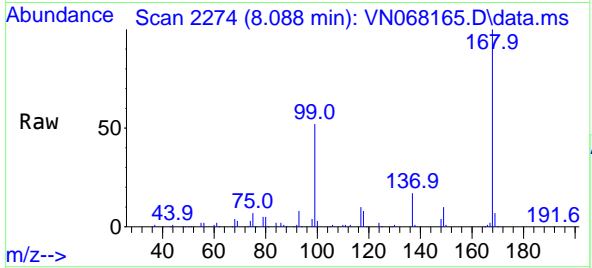




#1
 Pentafluorobenzene
 Concen: 50.000 ug/l
 RT: 8.088 min Scan# 2274
 Delta R.T. 0.000 min
 Lab File: VN068165.D
 Acq: 18 Aug 2021 1:28

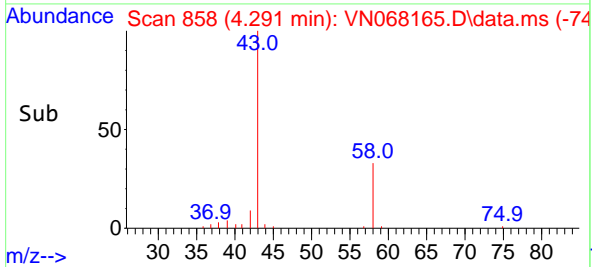
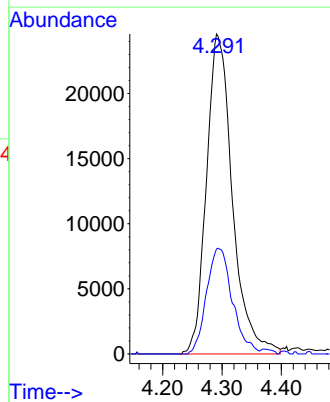
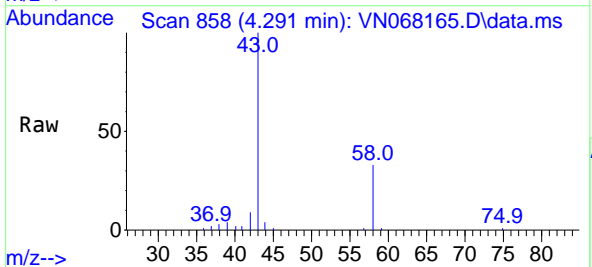
Instrument :
 MSVOA_N
 ClientSampled :
 2021-08-11-EB-02

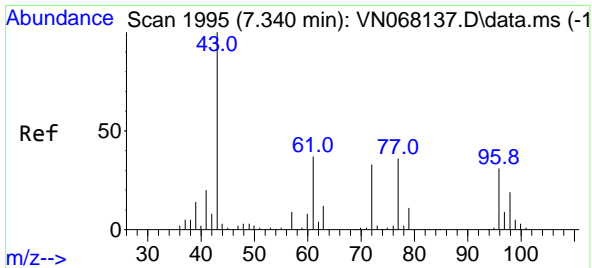
Tgt Ion:168 Resp: 390010
 Ion Ratio Lower Upper
 168 100
 99 52.0 62.9 94.3#



#16
 Acetone
 Concen: 61.402 ug/l
 RT: 4.291 min Scan# 858
 Delta R.T. 0.003 min
 Lab File: VN068165.D
 Acq: 18 Aug 2021 1:28

Tgt Ion: 43 Resp: 74654
 Ion Ratio Lower Upper
 43 100
 58 32.8 21.2 31.8#

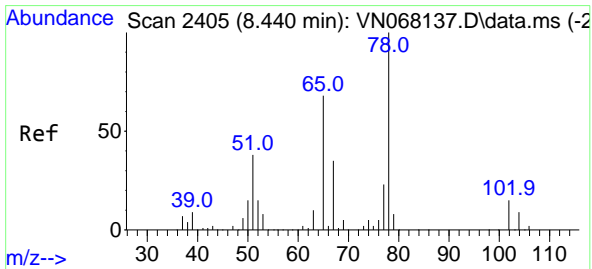
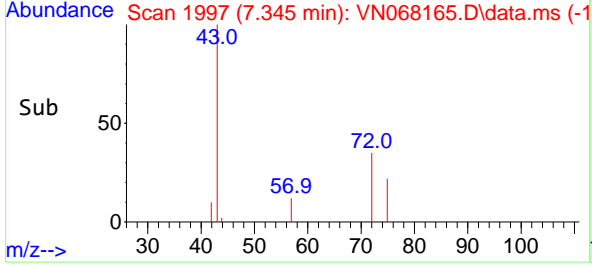
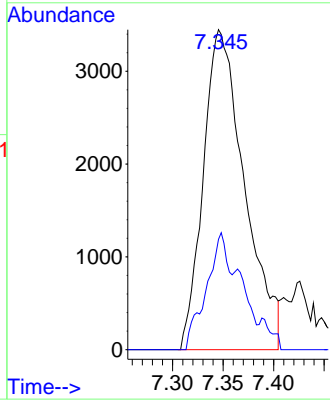
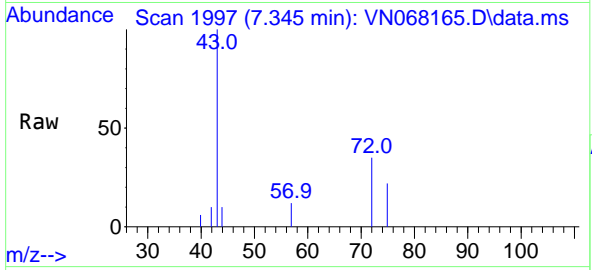




#25
 2-Butanone
 Concen: 5.164 ug/l
 RT: 7.345 min Scan# 1997
 Delta R.T. 0.005 min
 Lab File: VN068165.D
 Acq: 18 Aug 2021 1:28

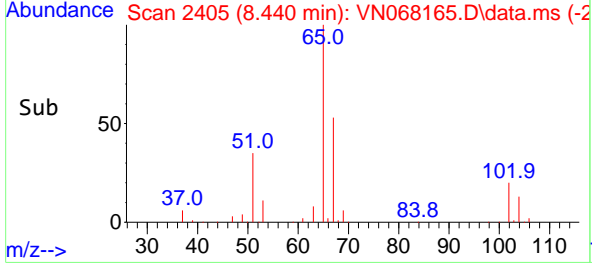
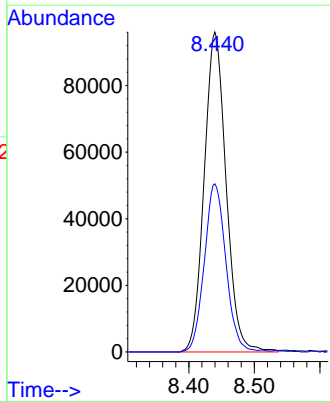
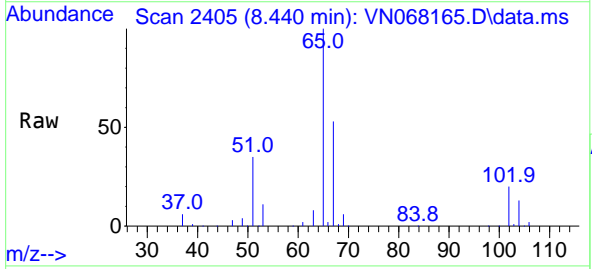
Instrument :
 MSVOA_N
ClientSampled :
 2021-08-11-EB-02

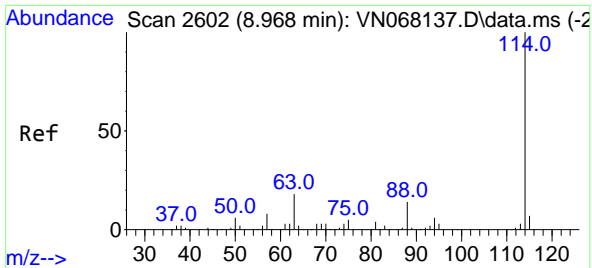
Tgt Ion: 43 Resp: 9784
 Ion Ratio Lower Upper
 43 100
 72 37.0 19.7 29.5#



#33
 1,2-Dichloroethane-d4
 Concen: 53.520 ug/l
 RT: 8.440 min Scan# 2405
 Delta R.T. -0.000 min
 Lab File: VN068165.D
 Acq: 18 Aug 2021 1:28

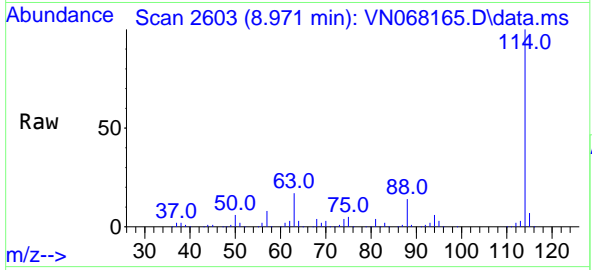
Tgt Ion: 65 Resp: 222869
 Ion Ratio Lower Upper
 65 100
 67 51.7 0.0 98.6





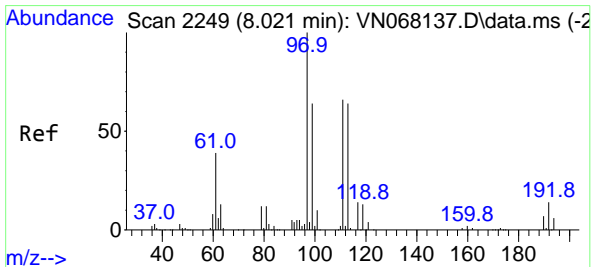
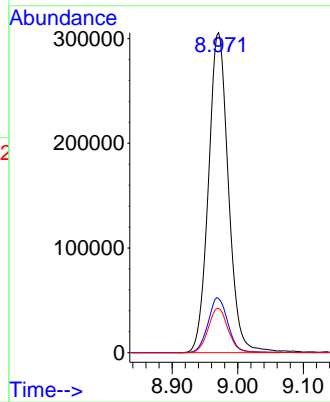
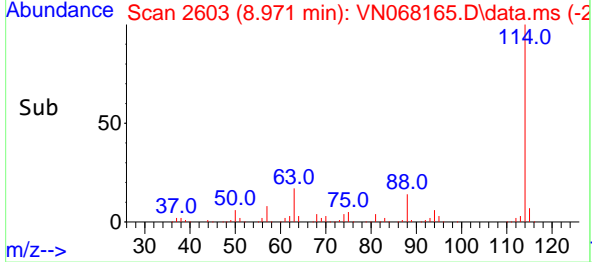
#34
 1,4-Difluorobenzene
 Concen: 50.000 ug/l
 RT: 8.971 min Scan# 2603
 Delta R.T. 0.003 min
 Lab File: VN068165.D
 Acq: 18 Aug 2021 1:28

Instrument :
 MSVOA_N
 ClientSampled :
 2021-08-11-EB-02

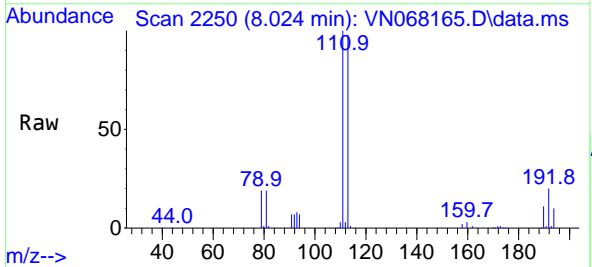


Tgt Ion:114 Resp: 645762

Ion	Ratio	Lower	Upper
114	100		
63	16.9	0.0	49.0
88	13.8	0.0	36.6

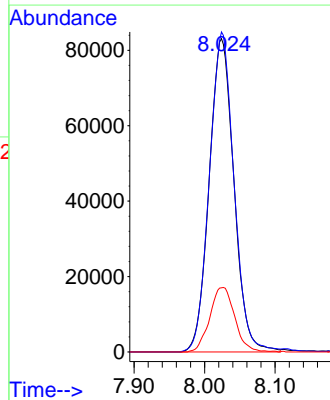
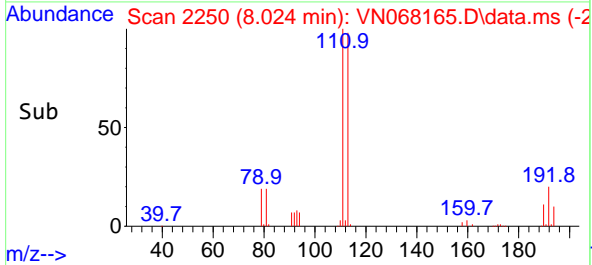


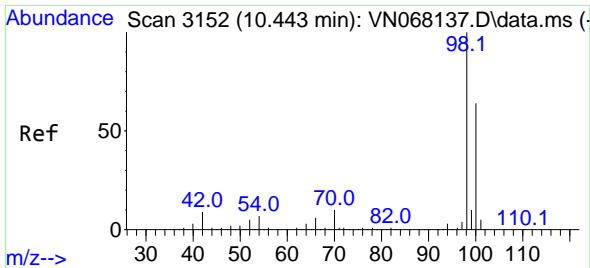
#35
 Dibromofluoromethane
 Concen: 49.960 ug/l
 RT: 8.024 min Scan# 2250
 Delta R.T. 0.003 min
 Lab File: VN068165.D
 Acq: 18 Aug 2021 1:28



Tgt Ion:113 Resp: 202550

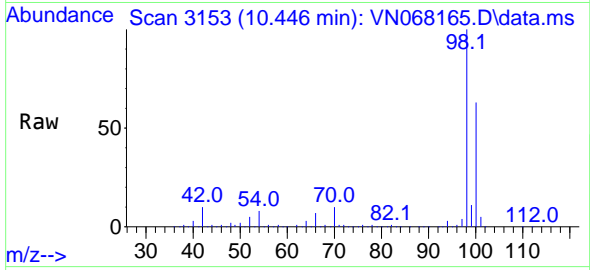
Ion	Ratio	Lower	Upper
113	100		
111	101.2	83.8	125.8
192	20.7	13.4	20.0#



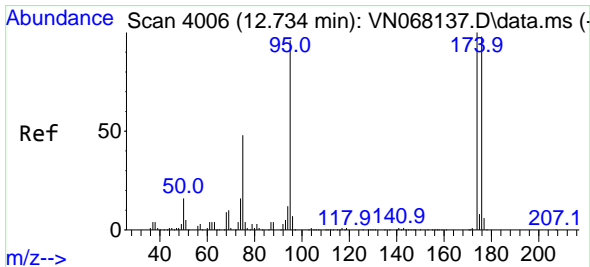
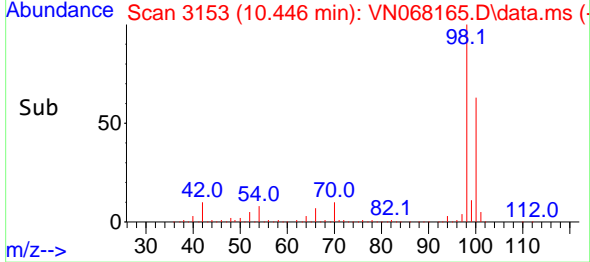
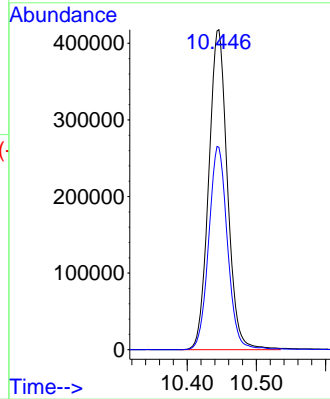


#50
 Toluene-d8
 Concen: 50.754 ug/l
 RT: 10.446 min Scan# 3153
 Delta R.T. 0.003 min
 Lab File: VN068165.D
 Acq: 18 Aug 2021 1:28

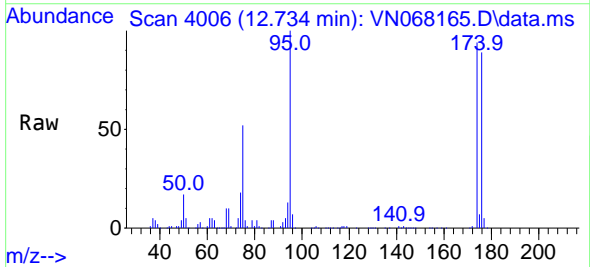
Instrument :
 MSVOA_N
 ClientSampled :
 2021-08-11-EB-02



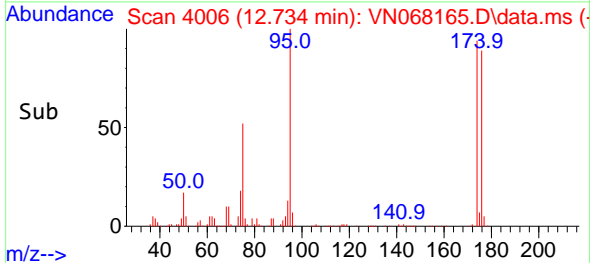
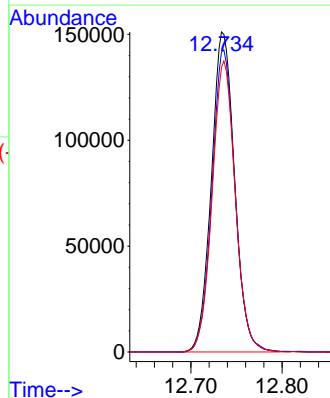
Tgt Ion: 98 Resp: 784050
 Ion Ratio Lower Upper
 98 100
 100 63.3 51.7 77.5

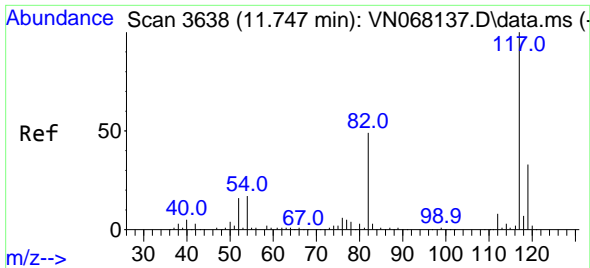


#62
 4-Bromofluorobenzene
 Concen: 51.998 ug/l
 RT: 12.734 min Scan# 4006
 Delta R.T. -0.000 min
 Lab File: VN068165.D
 Acq: 18 Aug 2021 1:28



Tgt Ion: 95 Resp: 267407
 Ion Ratio Lower Upper
 95 100
 174 93.9 0.0 122.0
 176 90.3 0.0 117.6

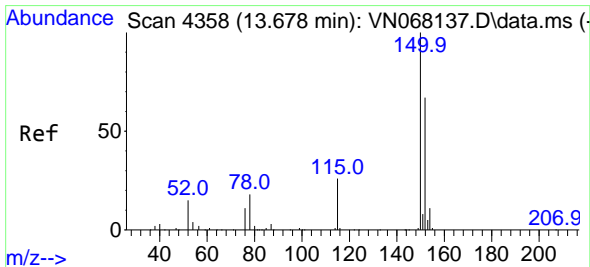
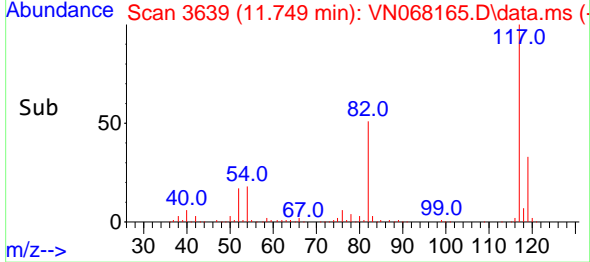
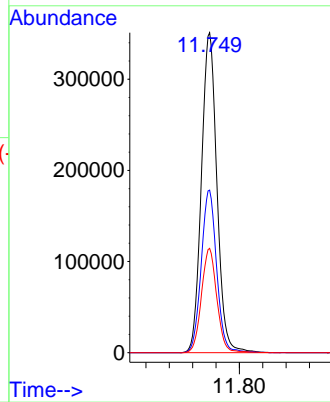
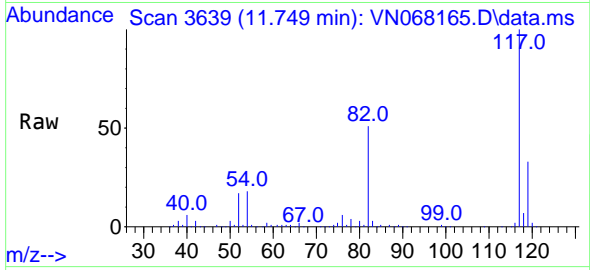




#63
 Chlorobenzene-d5
 Concen: 50.000 ug/l
 RT: 11.749 min Scan# 3639
 Delta R.T. 0.002 min
 Lab File: VN068165.D
 Acq: 18 Aug 2021 1:28

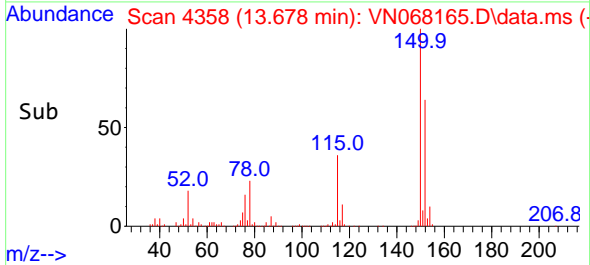
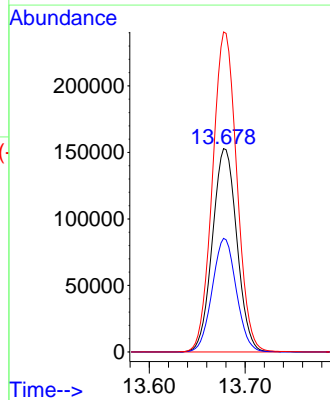
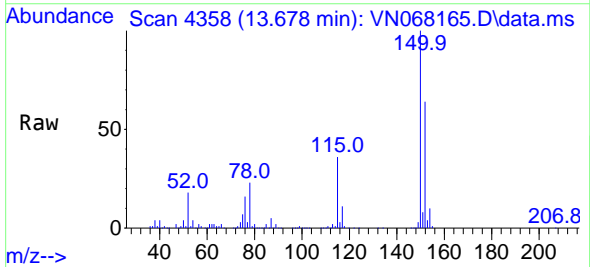
Instrument :
 MSVOA_N
 ClientSampled :
 2021-08-11-EB-02

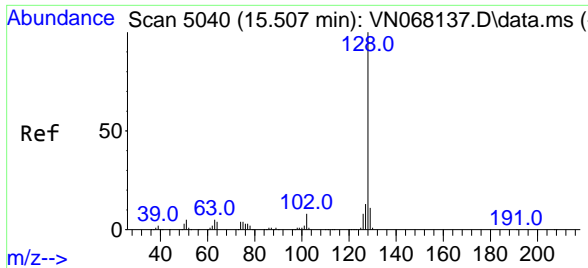
Tgt Ion:117 Resp: 647331
 Ion Ratio Lower Upper
 117 100
 82 50.8 53.1 79.7#
 119 32.6 25.5 38.3



#72
 1,4-Dichlorobenzene-d4
 Concen: 50.000 ug/l
 RT: 13.678 min Scan# 4358
 Delta R.T. -0.000 min
 Lab File: VN068165.D
 Acq: 18 Aug 2021 1:28

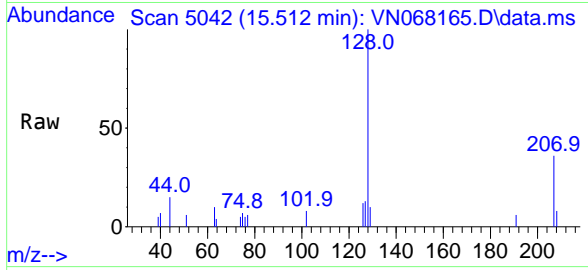
Tgt Ion:152 Resp: 270893
 Ion Ratio Lower Upper
 152 100
 115 55.1 36.1 108.5
 150 156.6 0.0 351.8





#95
 Naphthalene
 Concen: 3.928 ug/l
 RT: 15.512 min Scan# 5042
 Delta R.T. 0.005 min
 Lab File: VN068165.D
 Acq: 18 Aug 2021 1:28

Instrument :
 MSVOA_N
ClientSampled :
 2021-08-11-EB-02



Tgt Ion:128 Resp: 6649

Ion	Ratio	Lower	Upper
128	100		
127	13.8	10.6	15.8
129	7.7	8.6	12.8#

