

Data Path : Z:\VOASRV\HPCHEM1\MSVOA\_N\DATA\VN081819\  
 Data File : VN057360.D  
 Acq On : 16 Aug 2019 17:58  
 Operator : JC/SP  
 Sample : VN0818WBL01  
 Misc : 5.00mL/MSVOA\_N/WATER  
 ALS Vial : 20 Sample Multiplier: 1

Instrument :  
 MSVOA\_N  
 ClientSampleId :  
 VN0818WBL01

Quant Time: Aug 17 03:43:18 2019  
 Quant Method : Z:\VOASRV\HPCHEM1\MSVOA\_N\METHODS\82N081519W.M  
 Quant Title : SW846 8260  
 QLast Update : Thu Aug 15 11:33:14 2019  
 Response via : Initial Calibration

Internal Standards	R.T.	QIon	Response	Conc	Units	Dev(Min)
1) Pentafluorobenzene	7.66	168	1128238	50.00	ug/l	0.00
34) 1,4-Difluorobenzene	8.58	114	1576625	50.00	ug/l	0.00
63) Chlorobenzene-d5	11.41	117	1305980	50.00	ug/l	0.00
72) 1,4-Dichlorobenzene-d4	13.35	152	341537	50.00	ug/l	0.00

System Monitoring Compounds

33) 1,2-Dichloroethane-d4	8.02	65	510219	41.60	ug/l	0.00
Spiked Amount	50.000		Recovery	=	83.20%	
35) Dibromofluoromethane	7.58	113	470392	45.51	ug/l	0.00
Spiked Amount	50.000		Recovery	=	91.02%	
50) Toluene-d8	10.09	98	1798871	47.59	ug/l	0.00
Spiked Amount	50.000		Recovery	=	95.18%	
62) 4-Bromofluorobenzene	12.40	95	485955	36.38	ug/l	0.00
Spiked Amount	50.000		Recovery	=	72.76%	

Target Compounds

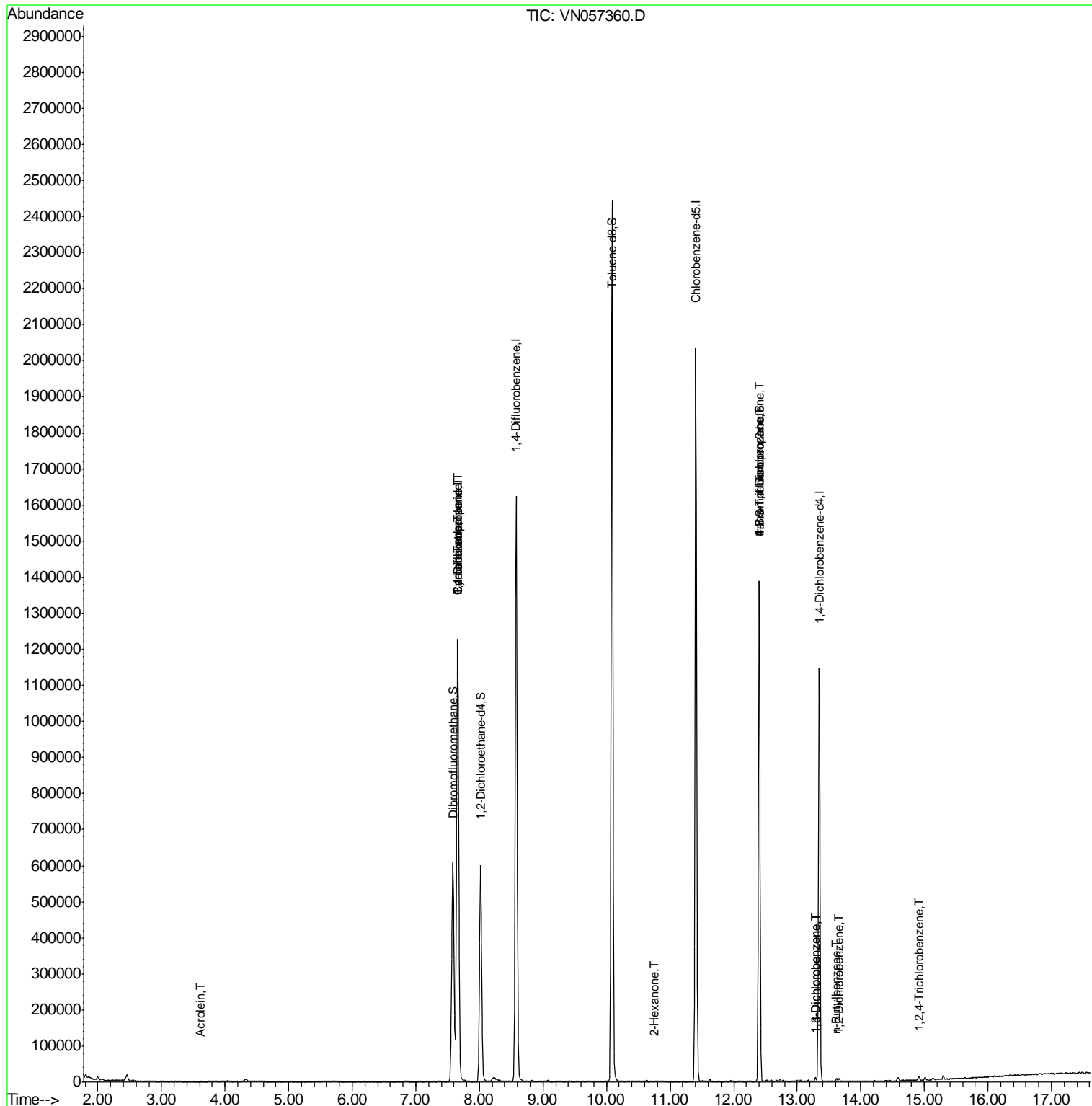
					Qvalue
13) Acrolein	3.61	56	354	0.334 ug/l	93
18) Methyl Acetate	4.32	43	13927	Below Cal	# 78
31) Cyclohexane	7.66	56	17002	1.017 ug/l	# 1
36) 1,1-Dichloropropene	7.66	75	66995	4.813 ug/l	# 42
38) Carbon Tetrachloride	7.66	117	95502	6.603 ug/l	# 15
43) Isopropyl Acetate	8.22	43	18321	Below Cal	# 54
59) 2-Hexanone	10.76	43	1996	0.236 ug/l	# 53
73) Isopropylbenzene	12.25	105	2391	Below Cal	# 68
75) 1,1,2,2-Tetrachloroethane	12.51	83	140	Below Cal	# 26
76) 1,2,3-Trichloropropane	12.40	75	223863	32.641 ug/l	# 100
77) Bromobenzene	12.53	156	955	Below Cal	# 73
79) 2-Chlorotoluene	12.68	91	2493	Below Cal	# 97
80) 1,3,5-Trimethylbenzene	12.74	105	2679	Below Cal	# 95
81) trans-1,4-Dichloro-2-buten	12.40	75	223863	79.925 ug/l	# 15
83) tert-Butylbenzene	12.99	119	1859	Below Cal	# 91
85) sec-Butylbenzene	13.18	105	3126	Below Cal	# 82
87) 1,3-Dichlorobenzene	13.28	146	3251	0.272 ug/l	# 84
88) 1,4-Dichlorobenzene	13.28	146	3251	0.286 ug/l	# 83
89) n-Butylbenzene	13.62	91	4308	0.240 ug/l	# 96
90) Hexachloroethane	13.88	117	140	Below Cal	# 1
91) 1,2-Dichlorobenzene	13.66	146	3848	0.345 ug/l	# 92
93) 1,2,4-Trichlorobenzene	14.91	180	4356	6.228 ug/l	# 96
94) Hexachlorobutadiene	15.01	225	1620	Below Cal	# 74
95) Naphthalene	15.13	128	5384	Below Cal	# 94
96) 1,2,3-Trichlorobenzene	15.29	180	4191	Below Cal	# 96

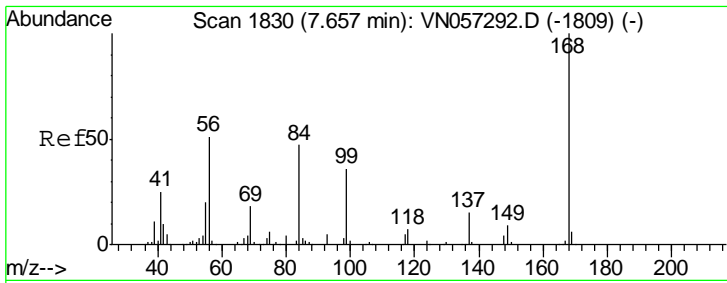
(#) = qualifier out of range (m) = manual integration (+) = signals summed

Data Path : Z:\VOASRV\HPCHEM1\MSVOA\_N\DATA\VN081819\  
 Data File : VN057360.D  
 Acq On : 16 Aug 2019 17:58  
 Operator : JC/SP  
 Sample : VN0818WBL01  
 Misc : 5.00mL/MSVOA\_N/WATER  
 ALS Vial : 20 Sample Multiplier: 1

Instrument :  
 MSVOA\_N  
 ClientSampleId :  
 VN0818WBL01

Quant Time: Aug 17 03:43:18 2019  
 Quant Method : Z:\VOASRV\HPCHEM1\MSVOA\_N\METHODS\82N081519W.M  
 Quant Title : SW846 8260  
 QLast Update : Thu Aug 15 11:33:14 2019  
 Response via : Initial Calibration

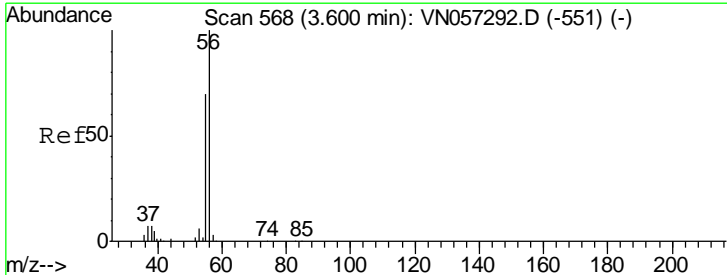
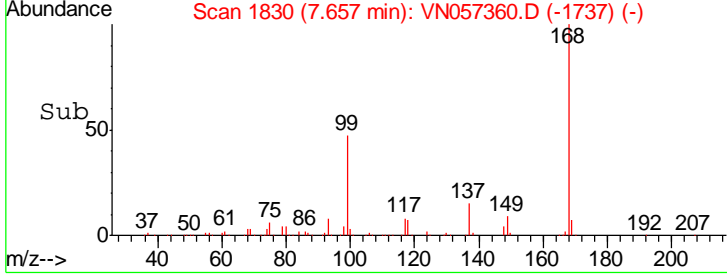
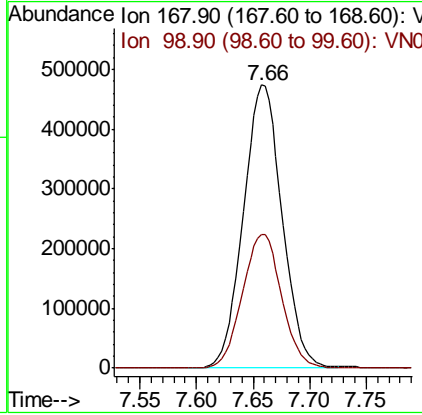
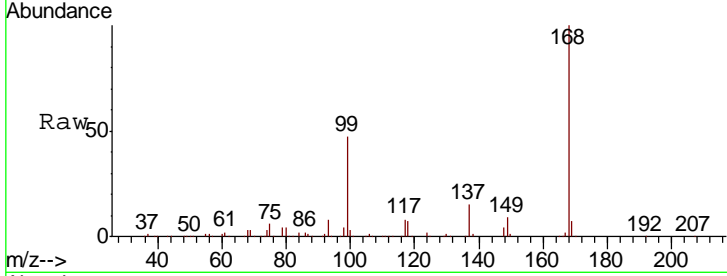




#1  
 Pentafluorobenzene  
 Concen: 50.000 ug/l  
 RT: 7.66 min Scan# 1830  
 Delta R.T. 0.00 min  
 Lab File: VN057360.D  
 Acq: 16 Aug 2019 17:58

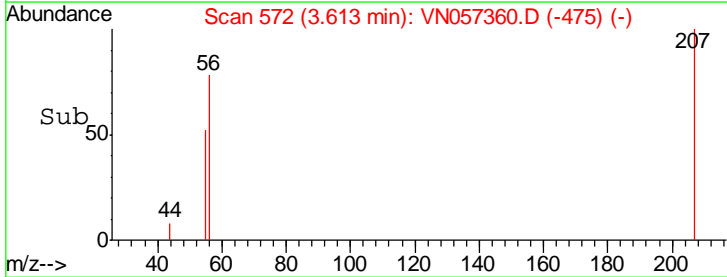
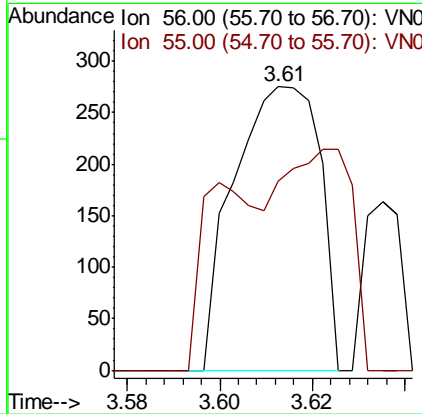
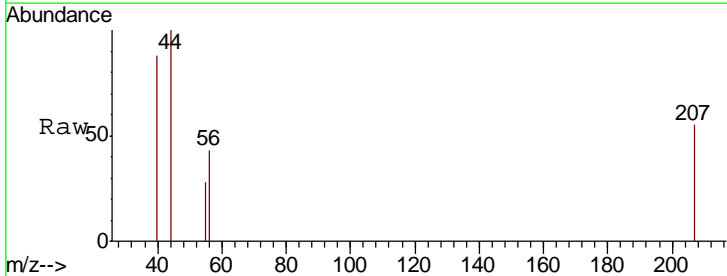
Instrument : MSVOA\_N  
 ClientSampled : VN0818WBL01

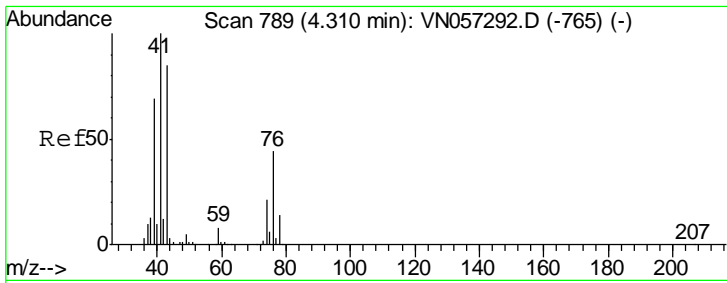
Tgt Ion: 168 Resp: 1128238  
 Ion Ratio Lower Upper  
 168 100  
 99 47.3 39.4 59.2



#13  
 Acrolein  
 Concen: 0.334 ug/l  
 RT: 3.61 min Scan# 572  
 Delta R.T. 0.01 min  
 Lab File: VN057360.D  
 Acq: 16 Aug 2019 17:58

Tgt Ion: 56 Resp: 354  
 Ion Ratio Lower Upper  
 56 100  
 55 65.0 56.6 84.8

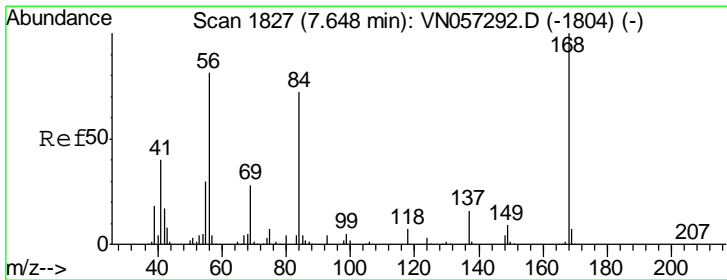
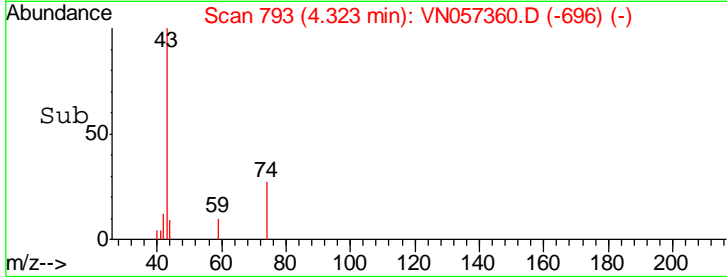
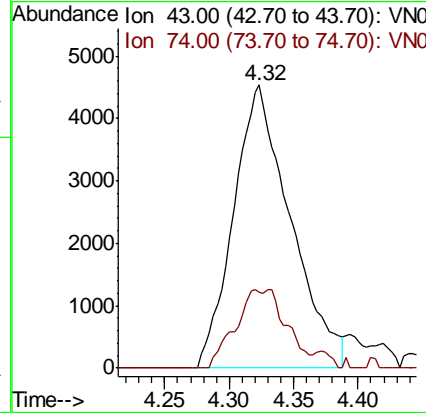
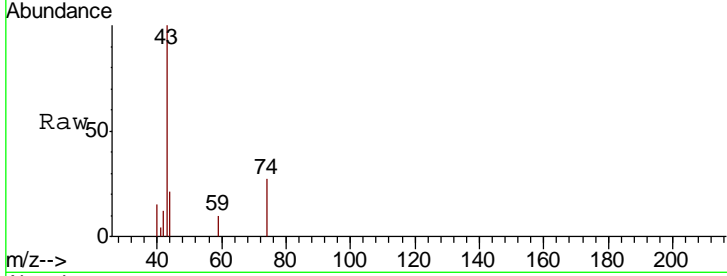




#18  
 Methyl Acetate  
 Concen: Below Cal  
 RT: 4.32 min Scan# 793  
 Delta R.T. 0.01 min  
 Lab File: VN057360.D  
 Acq: 16 Aug 2019 17:58

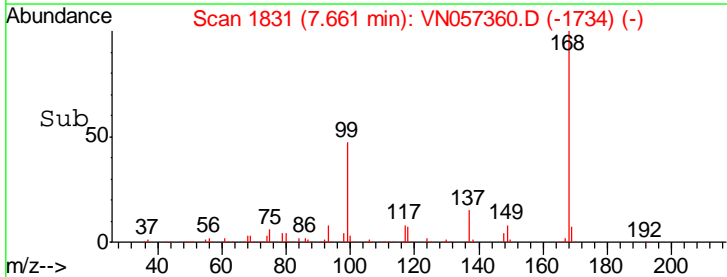
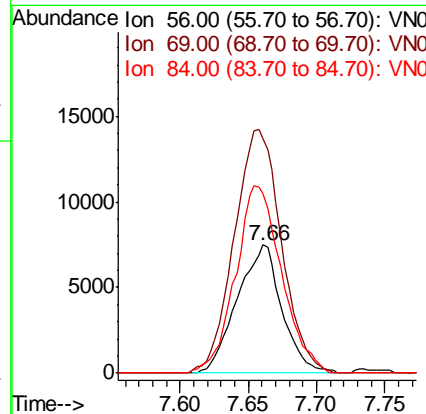
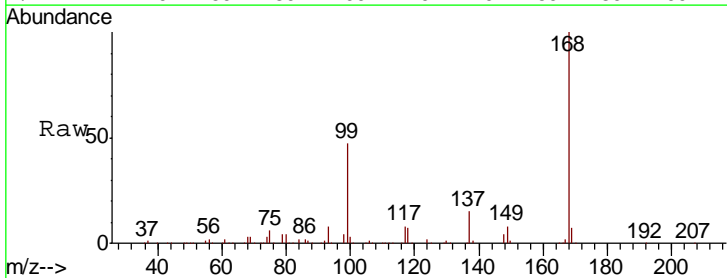
Instrument : MSVOA\_N  
 ClientSampled : VN0818WBL01

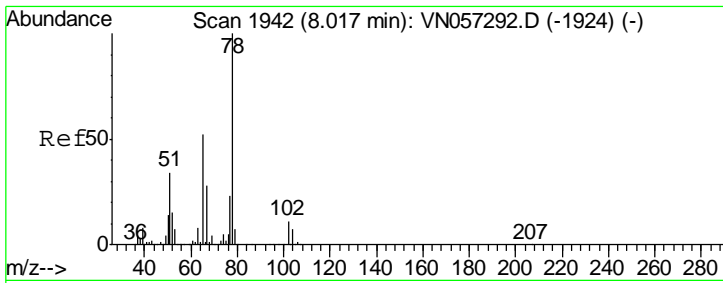
Tgt Ion: 43 Resp: 13927  
 Ion Ratio Lower Upper  
 43 100  
 74 13.9 20.2 30.2#



#31  
 Cyclohexane  
 Concen: 1.017 ug/l  
 RT: 7.66 min Scan# 1831  
 Delta R.T. 0.01 min  
 Lab File: VN057360.D  
 Acq: 16 Aug 2019 17:58

Tgt Ion: 56 Resp: 17002  
 Ion Ratio Lower Upper  
 56 100  
 69 183.0 27.3 40.9#  
 84 139.9 71.0 106.6#

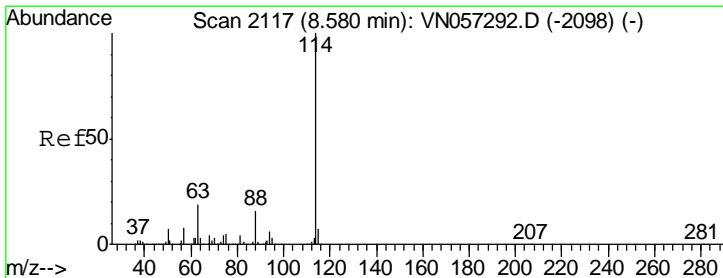
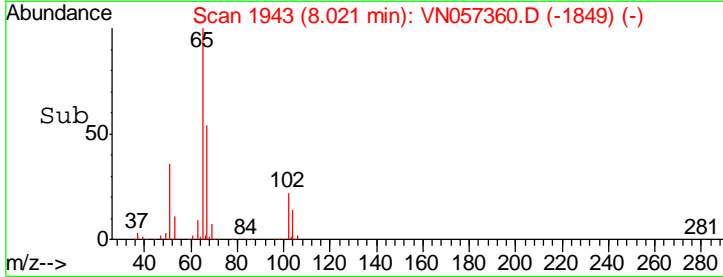
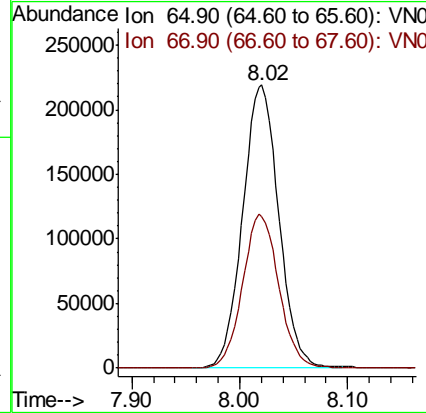
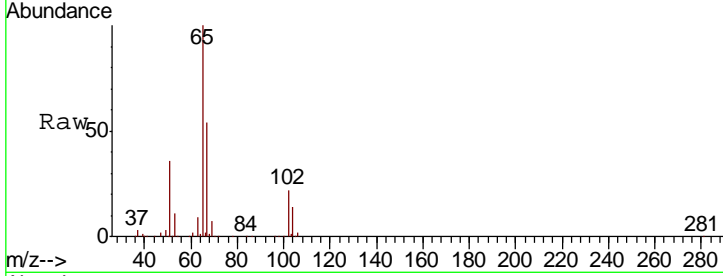




#33  
 1,2-Dichloroethane-d4  
 Concen: 41.599 ug/l  
 RT: 8.02 min Scan# 1943  
 Delta R.T. 0.00 min  
 Lab File: VN057360.D  
 Acq: 16 Aug 2019 17:58

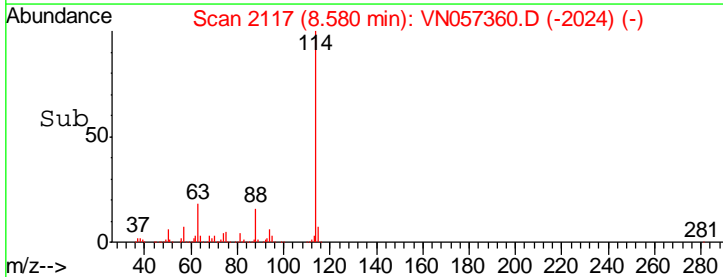
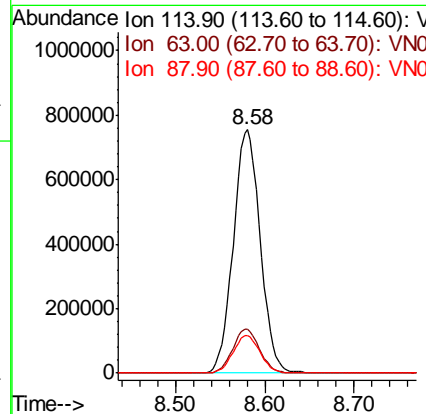
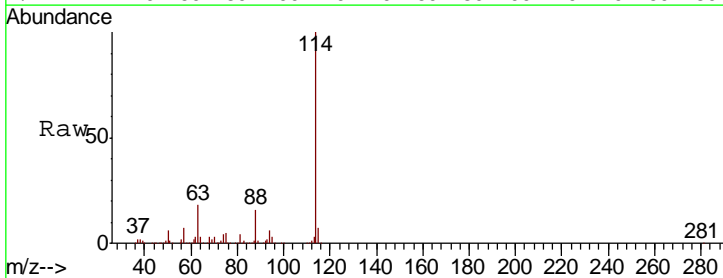
Instrument :  
 MSVOA\_N  
 ClientSampled :  
 VN0818WBL01

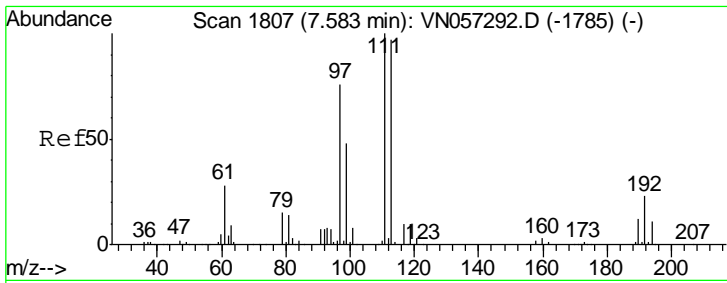
Tgt Ion: 65 Resp: 510219  
 Ion Ratio Lower Upper  
 65 100  
 67 54.3 0.0 107.4



#34  
 1,4-Difluorobenzene  
 Concen: 50.000 ug/l  
 RT: 8.58 min Scan# 2117  
 Delta R.T. 0.00 min  
 Lab File: VN057360.D  
 Acq: 16 Aug 2019 17:58

Tgt Ion: 114 Resp: 1576625  
 Ion Ratio Lower Upper  
 114 100  
 63 18.1 0.0 38.8  
 88 15.6 0.0 31.4

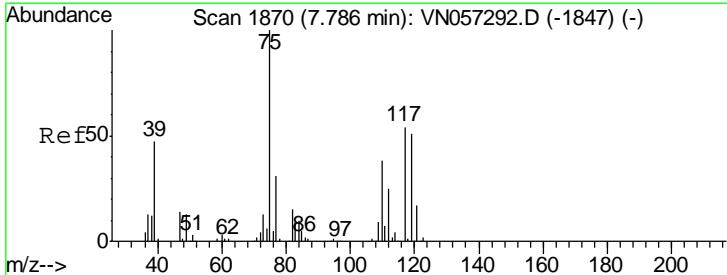
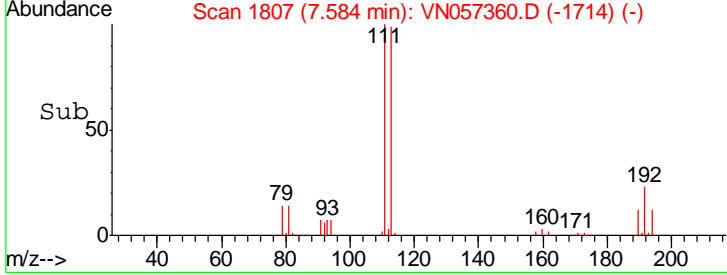
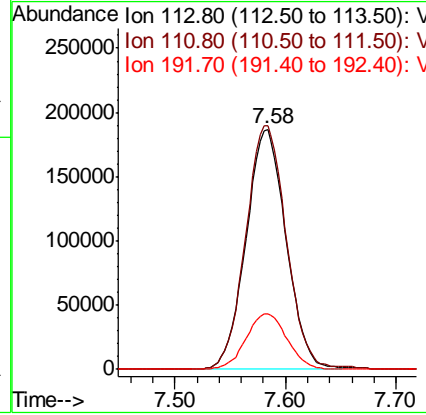
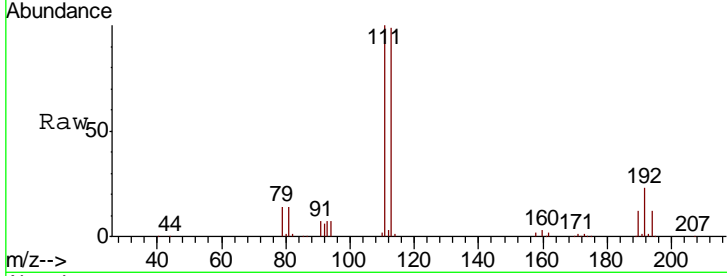




#35  
 Dibromofluoromethane  
 Concen: 45.514 ug/l  
 RT: 7.58 min Scan# 1807  
 Delta R.T. 0.00 min  
 Lab File: VN057360.D  
 Acq: 16 Aug 2019 17:58

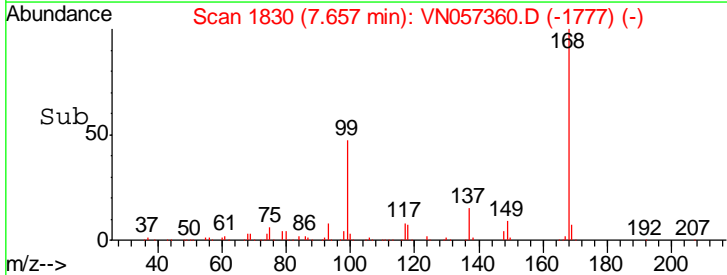
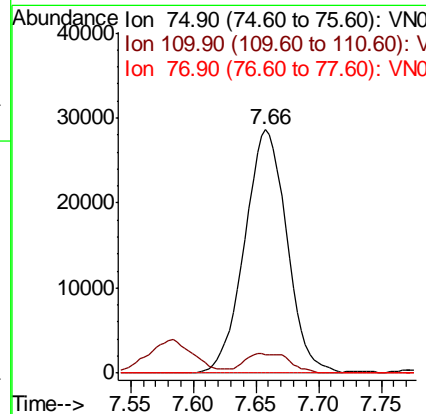
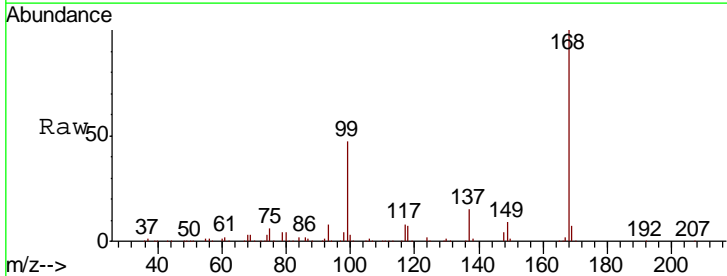
Instrument :  
 MSVOA\_N  
 ClientSampled :  
 VN0818WBL01

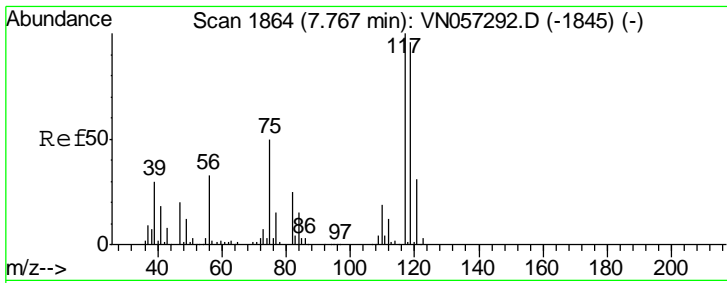
Tgt Ion	Resp	Lower	Upper
113	470392		
111	102.7	82.1	123.1
192	23.8	19.3	28.9



#36  
 1,1-Dichloropropene  
 Concen: 4.813 ug/l  
 RT: 7.66 min Scan# 1830  
 Delta R.T. -0.13 min  
 Lab File: VN057360.D  
 Acq: 16 Aug 2019 17:58

Tgt Ion	Resp	Lower	Upper
75	66995		
75	100		
110	3.5	19.5	58.5#
77	0.0	25.0	37.6#

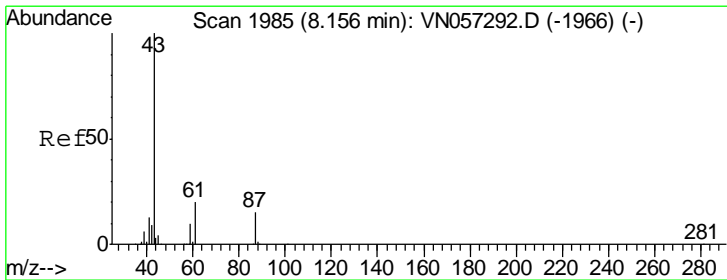
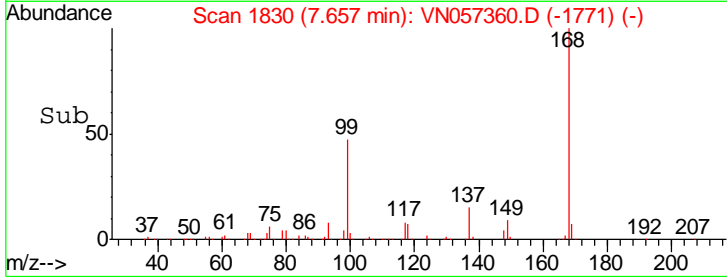
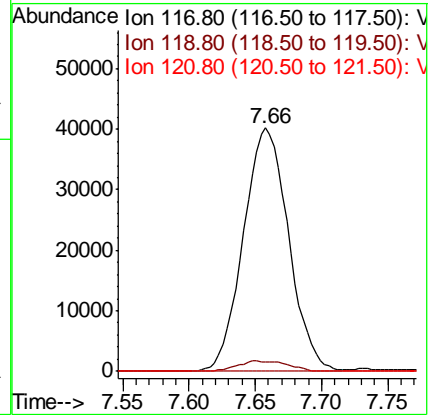
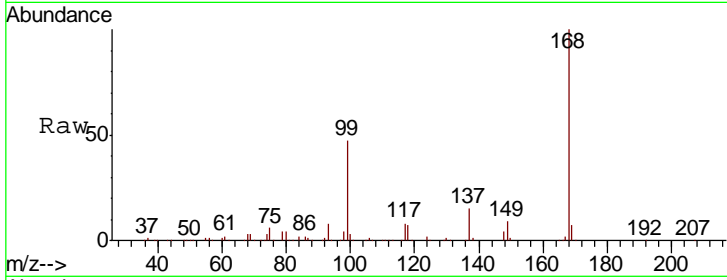




#38  
 Carbon Tetrachloride  
 Concen: 6.603 ug/l  
 RT: 7.66 min Scan# 1830  
 Delta R.T. -0.11 min  
 Lab File: VN057360.D  
 Acq: 16 Aug 2019 17:58

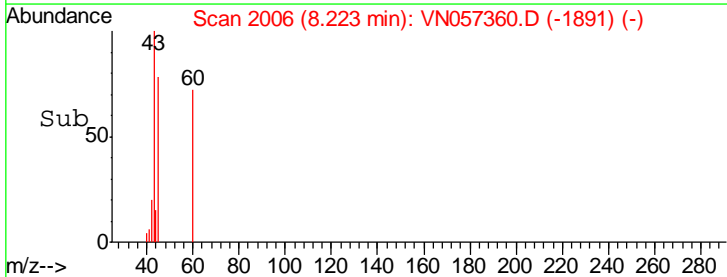
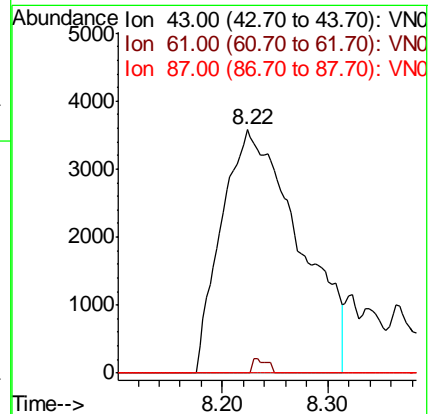
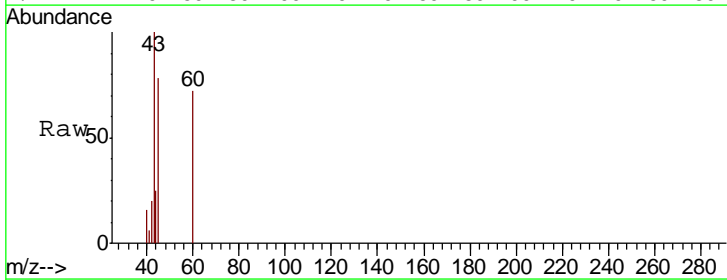
Instrument :  
 MSVOA\_N  
 ClientSampled :  
 VN0818WBL01

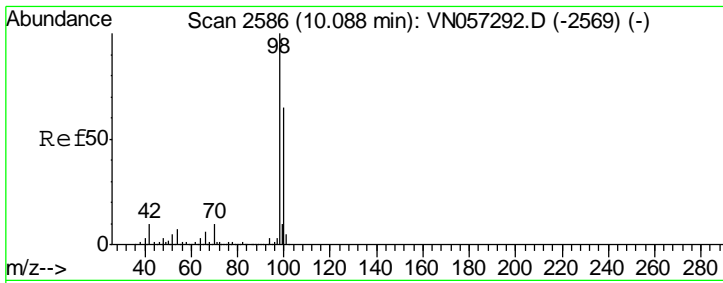
Tgt Ion	Resp	Lower	Upper
117	100		
119	4.0	76.8	115.2#
121	0.0	25.0	37.4#



#43  
 Isopropyl Acetate  
 Concen: Below Cal  
 RT: 8.22 min Scan# 2006  
 Delta R.T. 0.07 min  
 Lab File: VN057360.D  
 Acq: 16 Aug 2019 17:58

Tgt Ion	Resp	Lower	Upper
43	100		
61	0.0	21.6	32.4#
87	0.0	11.4	17.0#

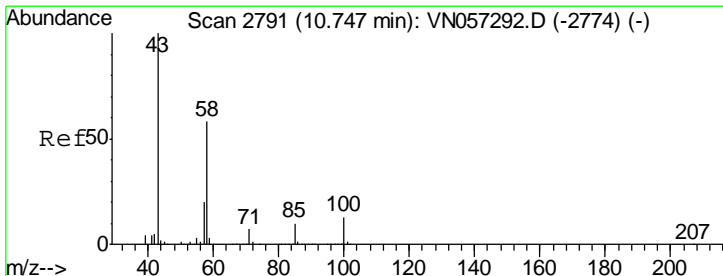
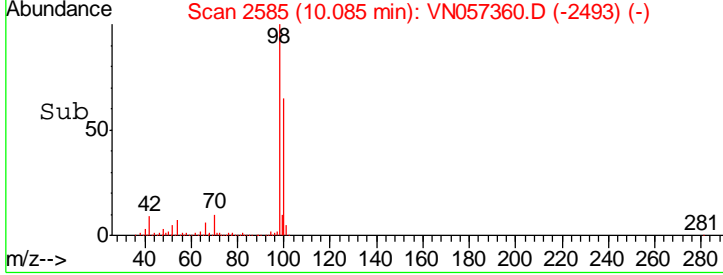
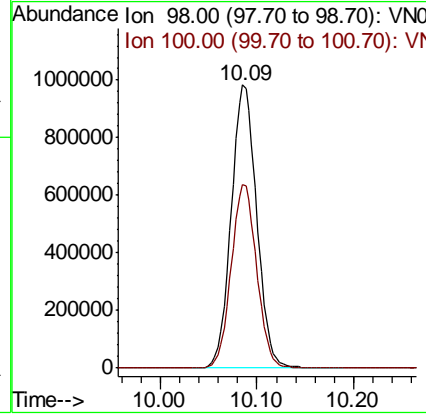
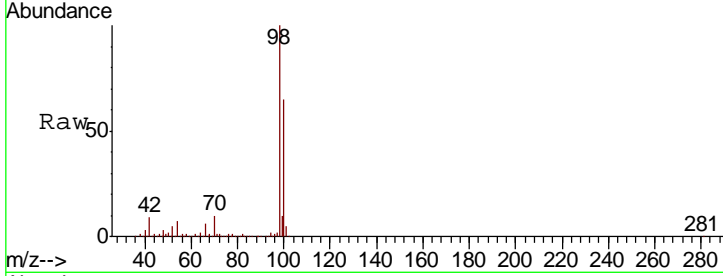




#50  
 Toluene-d8  
 Concen: 47.588 ug/l  
 RT: 10.09 min Scan# 2585  
 Delta R.T. -0.00 min  
 Lab File: VN057360.D  
 Acq: 16 Aug 2019 17:58

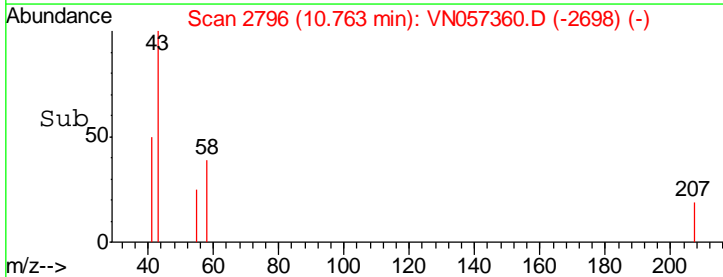
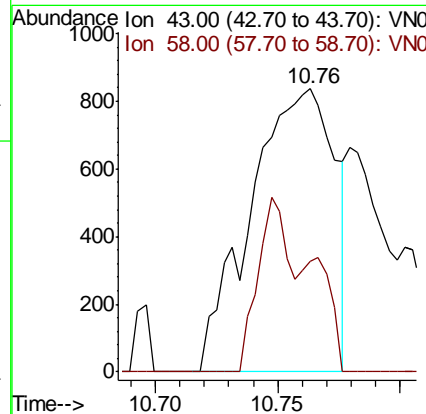
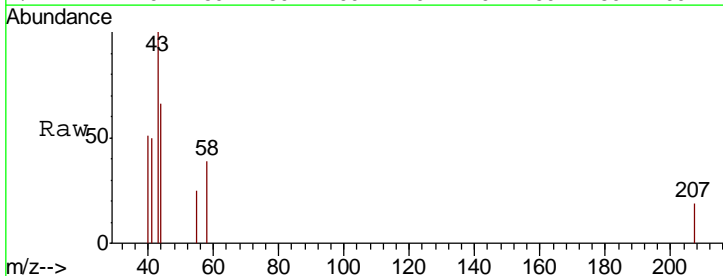
Instrument : MSVOA\_N  
 ClientSampled : VN0818WBL01

Tgt Ion: 98 Resp: 1798871  
 Ion Ratio Lower Upper  
 98 100  
 100 65.0 51.9 77.9

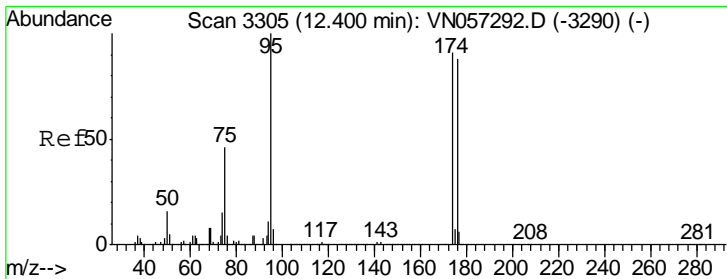


#59  
 2-Hexanone  
 Concen: 0.236 ug/l  
 RT: 10.76 min Scan# 2796  
 Delta R.T. 0.02 min  
 Lab File: VN057360.D  
 Acq: 16 Aug 2019 17:58

Tgt Ion: 43 Resp: 1996  
 Ion Ratio Lower Upper  
 43 100  
 58 22.9 28.6 85.9#



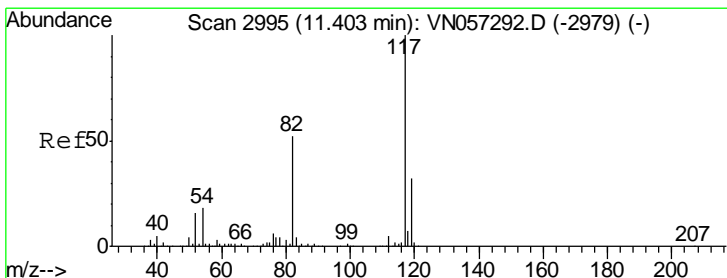
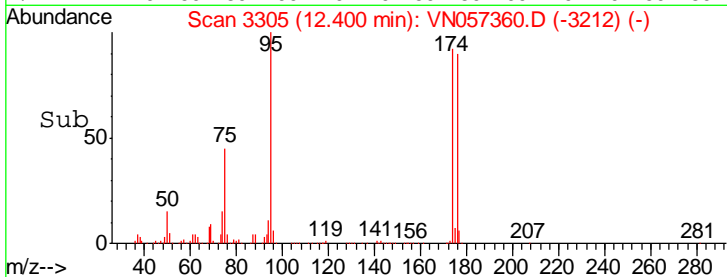
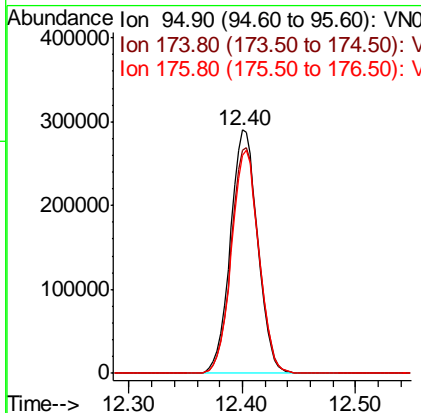
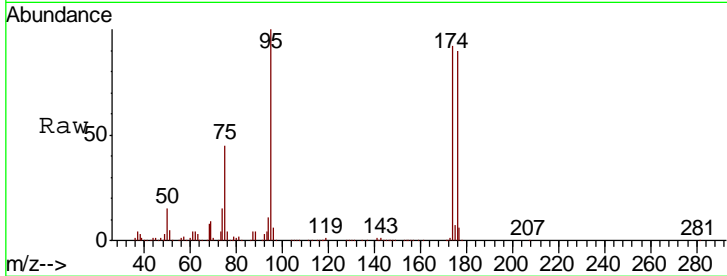




#62  
 4-Bromofluorobenzene  
 Concen: 36.378 ug/l  
 RT: 12.40 min Scan# 3305  
 Delta R.T. 0.00 min  
 Lab File: VN057360.D  
 Acq: 16 Aug 2019 17:58

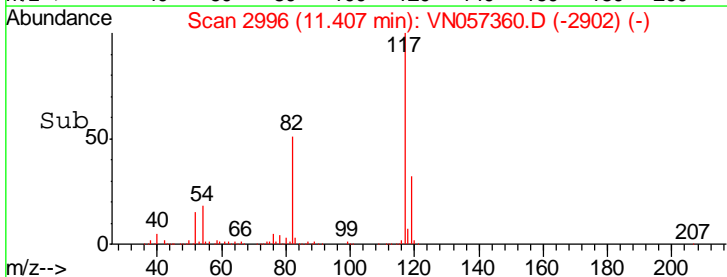
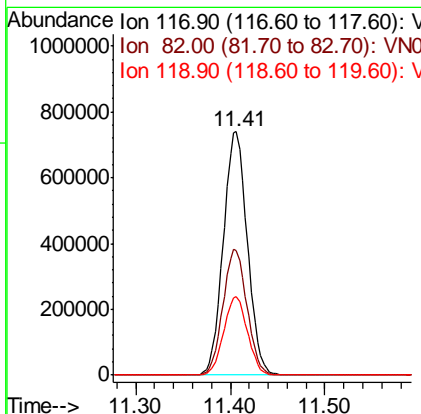
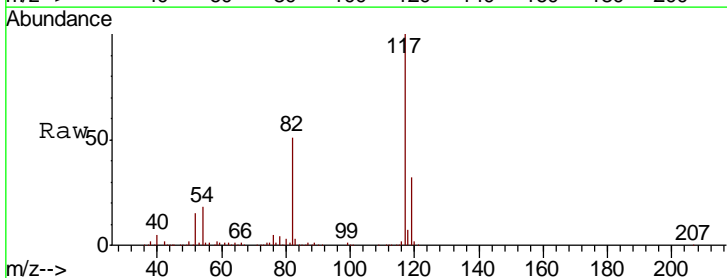
Instrument :  
 MSVOA\_N  
 ClientSampled :  
 VN0818WBL01

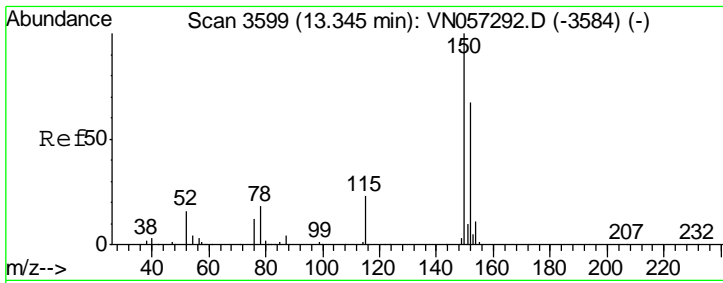
Tgt Ion	Resp	Lower	Upper
95	485955		
174	94.1	0.0	185.0
176	91.7	0.0	181.0



#63  
 Chlorobenzene-d5  
 Concen: 50.000 ug/l  
 RT: 11.41 min Scan# 2996  
 Delta R.T. 0.00 min  
 Lab File: VN057360.D  
 Acq: 16 Aug 2019 17:58

Tgt Ion	Resp	Lower	Upper
117	1305980		
82	51.2	41.2	61.8
119	32.1	25.8	38.8

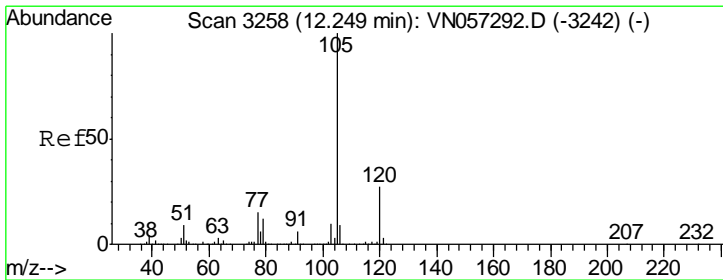
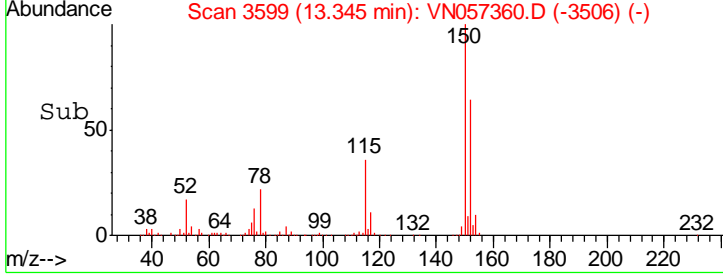
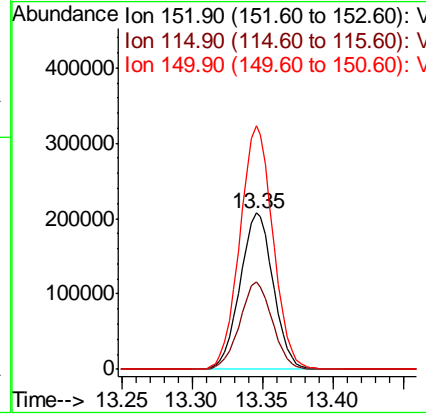
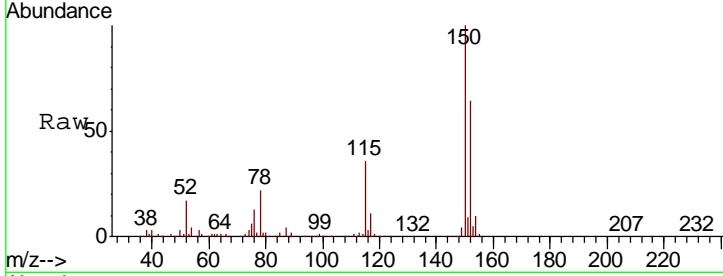




#72  
 1,4-Dichlorobenzene-d4  
 Concen: 50.000 ug/l  
 RT: 13.35 min Scan# 3599  
 Delta R.T. 0.00 min  
 Lab File: VN057360.D  
 Acq: 16 Aug 2019 17:58

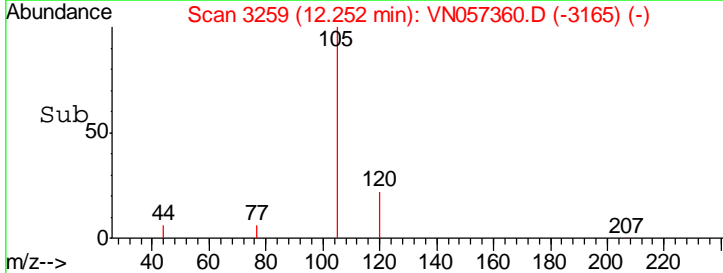
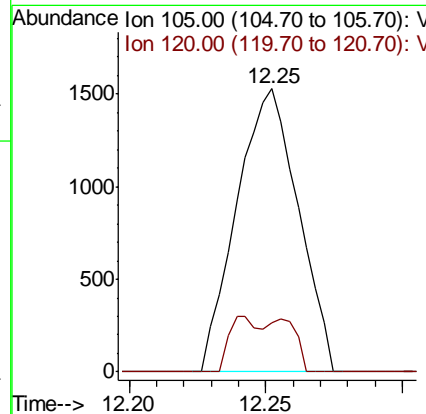
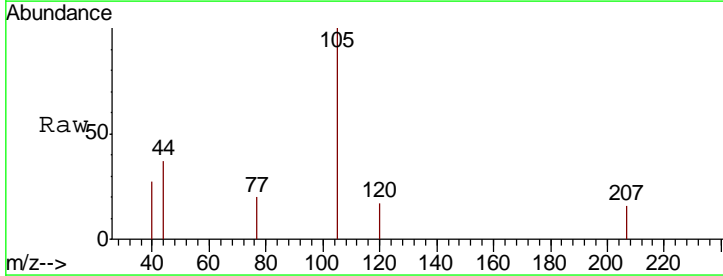
Instrument : MSVOA\_N  
 ClientSampled : VN0818WBL01

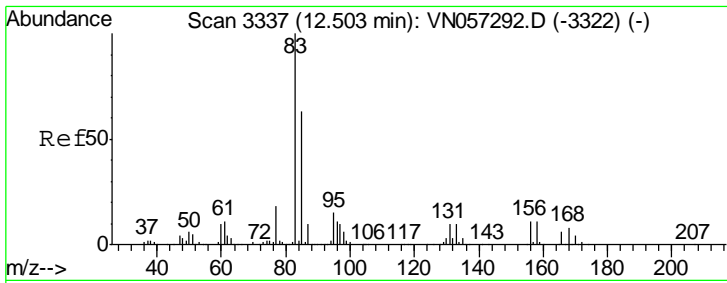
Tgt Ion	Resp	Lower	Upper
152	341537		
152	100		
115	54.5	27.3	81.9
150	155.7	0.0	344.4



#73  
 Isopropylbenzene  
 Concen: Below Cal  
 RT: 12.25 min Scan# 3259  
 Delta R.T. 0.00 min  
 Lab File: VN057360.D  
 Acq: 16 Aug 2019 17:58

Tgt Ion	Resp	Lower	Upper
105	2391		
105	100		
120	10.2	13.2	39.6#

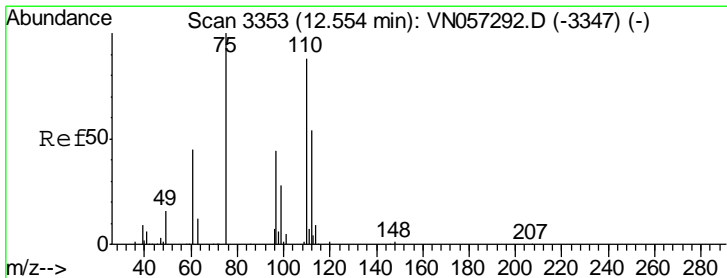
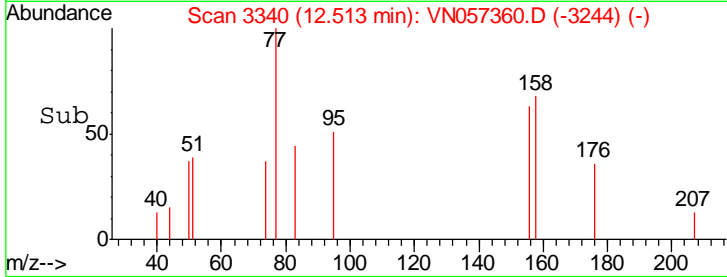
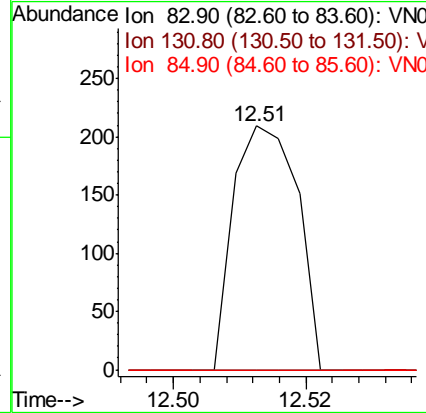
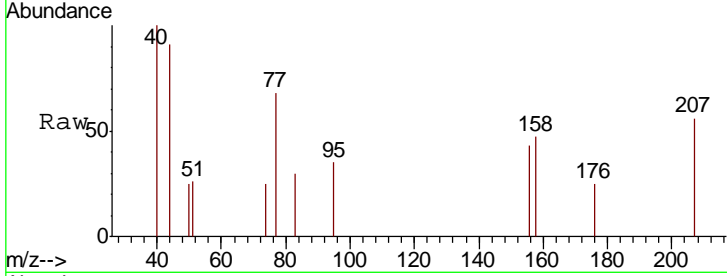




#75  
 1,1,2,2-Tetrachloroethane  
 Concen: Below Cal  
 RT: 12.51 min Scan# 3340  
 Delta R.T. 0.01 min  
 Lab File: VN057360.D  
 Acq: 16 Aug 2019 17:58

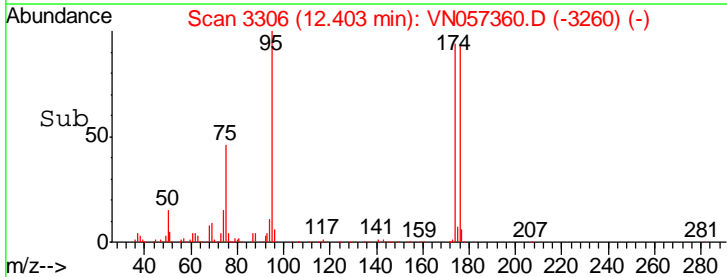
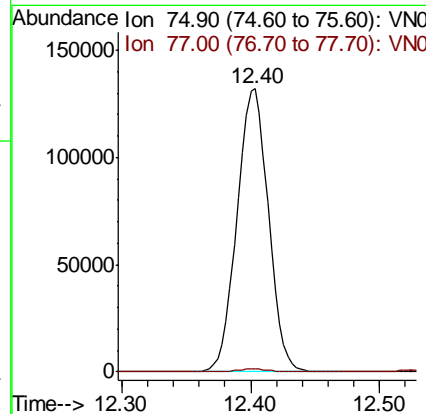
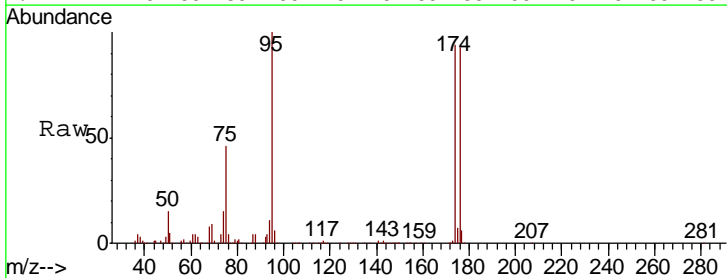
Instrument :  
 MSVOA\_N  
 ClientSampled :  
 VN0818WBL01

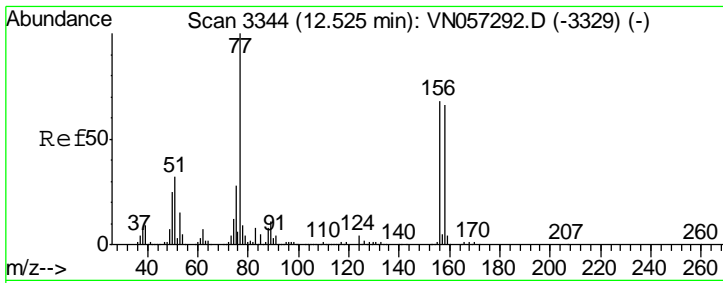
Tgt Ion	Resp	Lower	Upper
83	140		
131	0.0	5.4	16.2#
85	0.0	32.3	96.9#



#76  
 1,2,3-Trichloropropane  
 Concen: 32.641 ug/l  
 RT: 12.40 min Scan# 3306  
 Delta R.T. -0.15 min  
 Lab File: VN057360.D  
 Acq: 16 Aug 2019 17:58

Tgt Ion	Resp	Lower	Upper
75	223863		
75	100		
77	1.0	0.0	0.0#





#77

Bromobenzene

Concen: Below Cal

RT: 12.53 min Scan# 3345

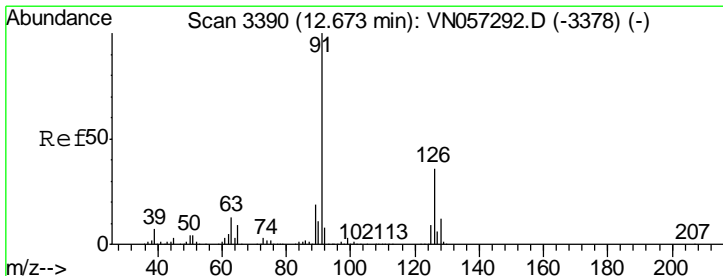
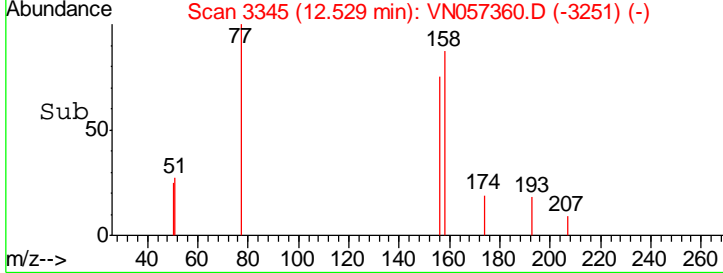
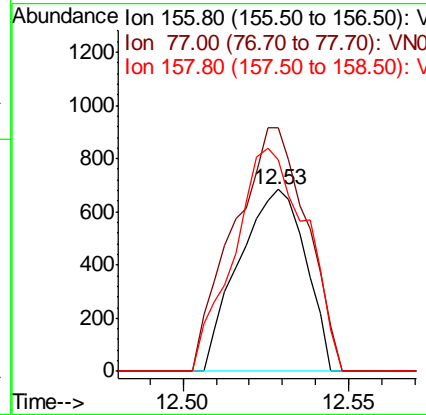
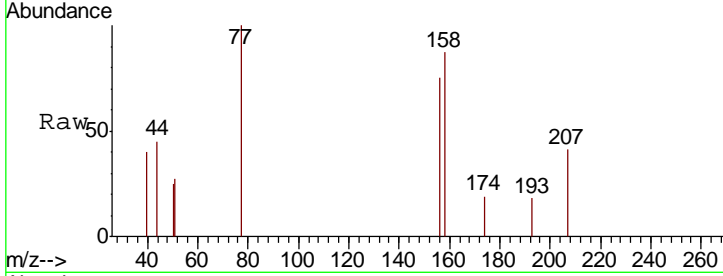
Delta R.T. 0.00 min

Lab File: VN057360.D

Acq: 16 Aug 2019 17:58

Instrument :  
MSVOA\_N  
ClientSampled :  
VN0818WBL01

Tgt Ion	Resp	Lower	Upper
156	955		
77	147.3	89.8	269.6
158	133.9	49.3	147.8



#79

2-Chlorotoluene

Concen: Below Cal

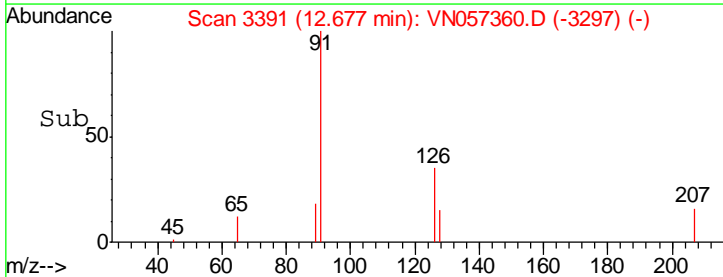
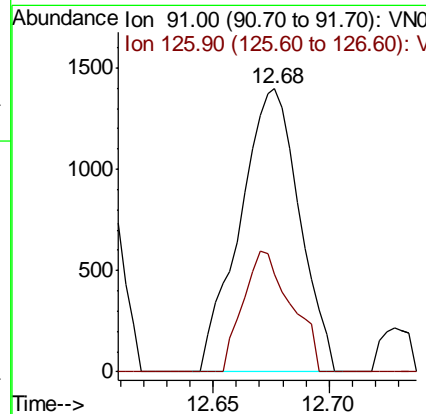
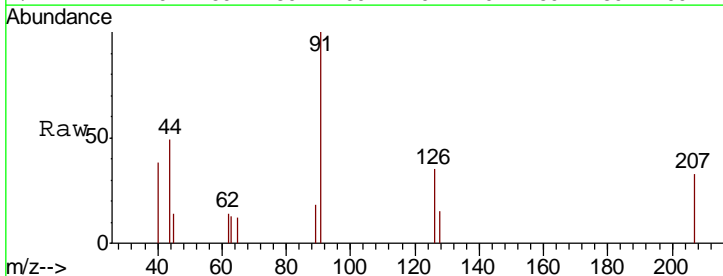
RT: 12.68 min Scan# 3391

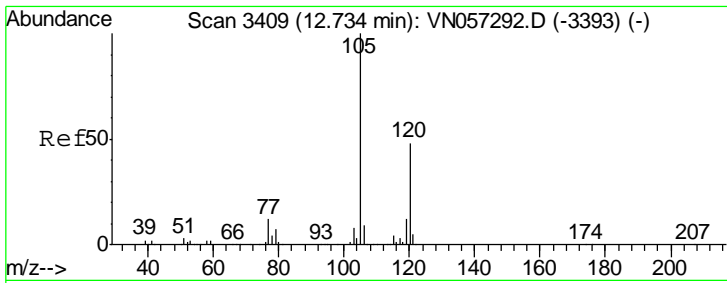
Delta R.T. 0.00 min

Lab File: VN057360.D

Acq: 16 Aug 2019 17:58

Tgt Ion	Resp	Lower	Upper
91	2493		
126	34.5	18.1	54.1

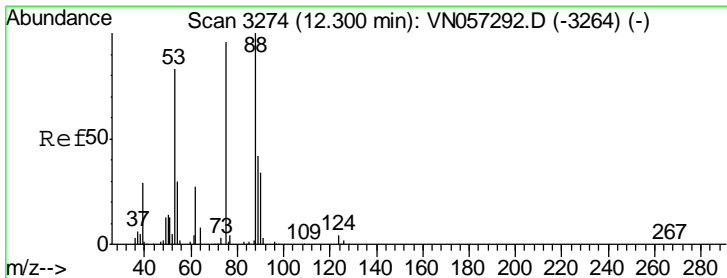
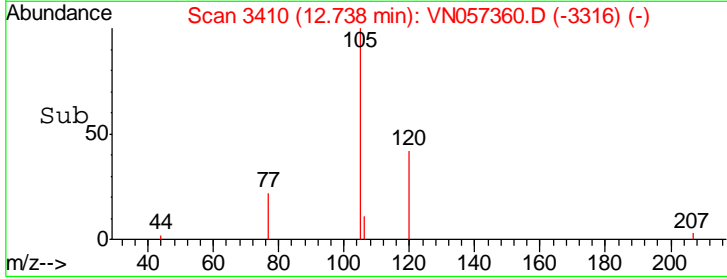
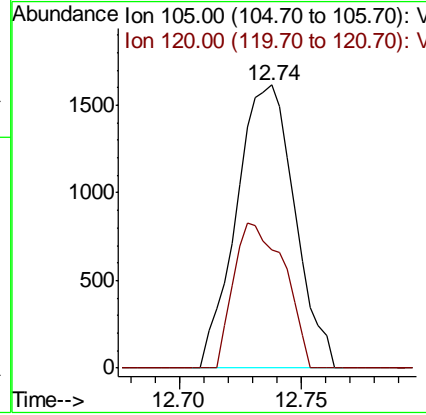
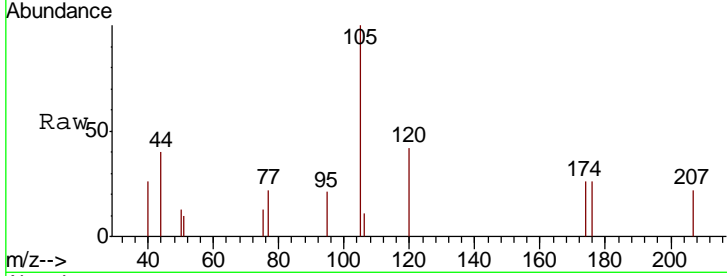




#80  
 1,3,5-Trimethylbenzene  
 Concen: Below Cal  
 RT: 12.74 min Scan# 3410  
 Delta R.T. 0.00 min  
 Lab File: VN057360.D  
 Acq: 16 Aug 2019 17:58

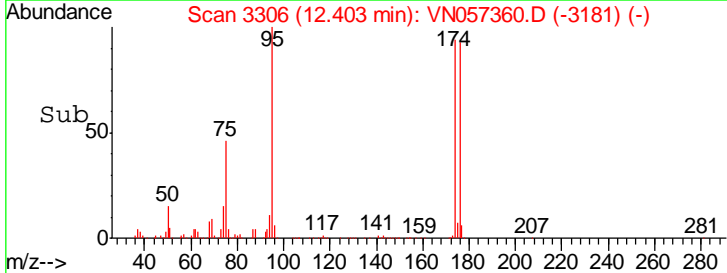
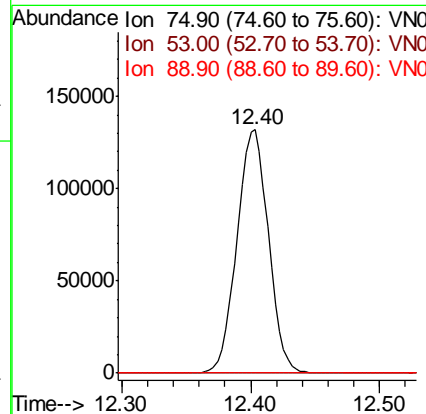
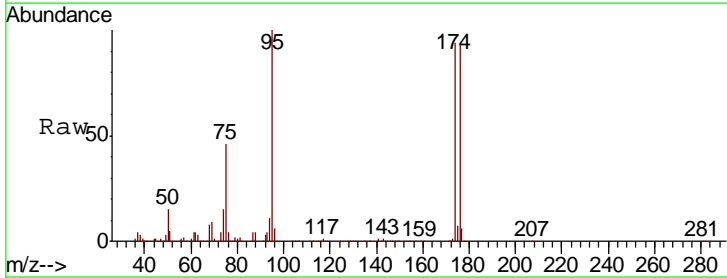
Instrument : MSVOA\_N  
 ClientSampled : VN0818WBL01

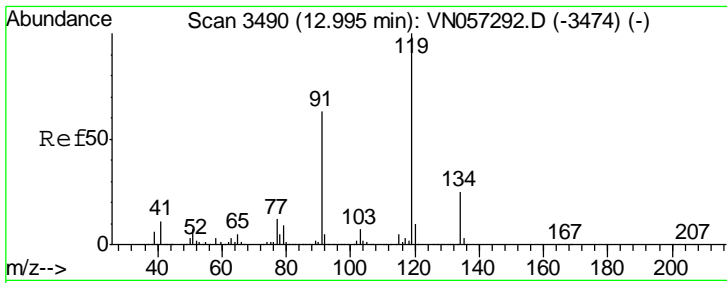
Tgt Ion	Resp	Lower	Upper
105	100		
120	45.0	24.3	73.0



#81  
 trans-1,4-Dichloro-2-butene  
 Concen: 79.925 ug/l  
 RT: 12.40 min Scan# 3306  
 Delta R.T. 0.10 min  
 Lab File: VN057360.D  
 Acq: 16 Aug 2019 17:58

Tgt Ion	Resp	Lower	Upper
75	100		
53	0.0	67.9	101.9#
89	0.0	36.2	54.4#

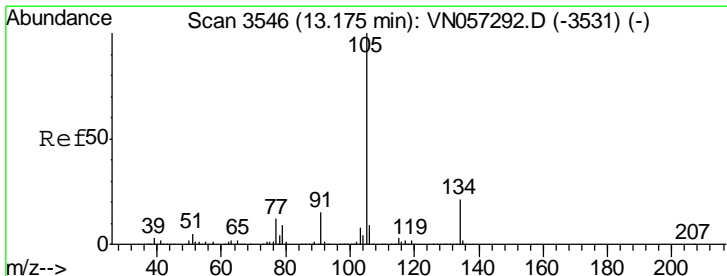
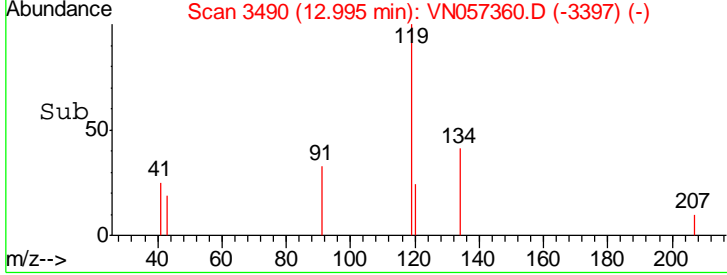
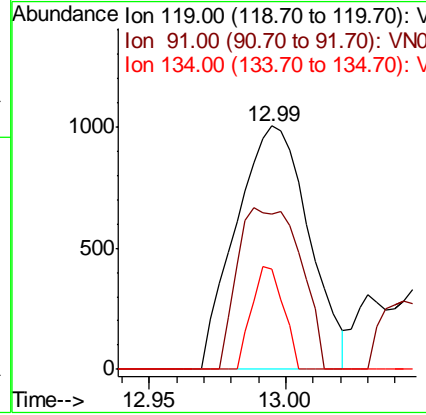
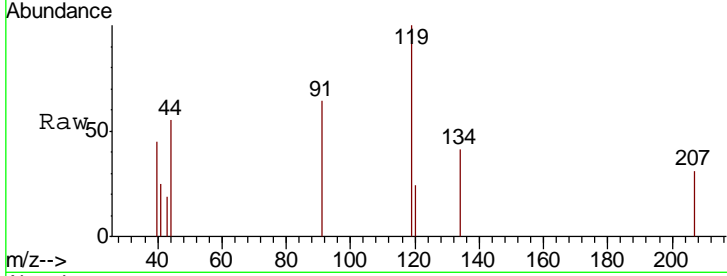




#83  
 tert-Butylbenzene  
 Concen: Below Cal  
 RT: 12.99 min Scan# 3490  
 Delta R.T. 0.00 min  
 Lab File: VN057360.D  
 Acq: 16 Aug 2019 17:58

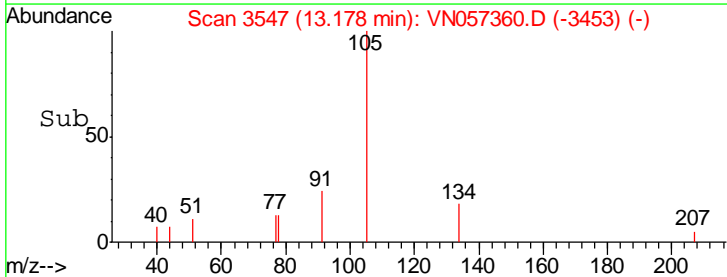
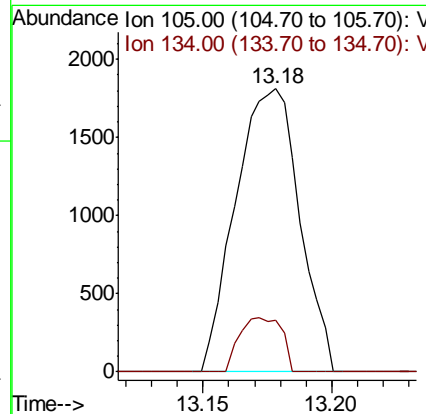
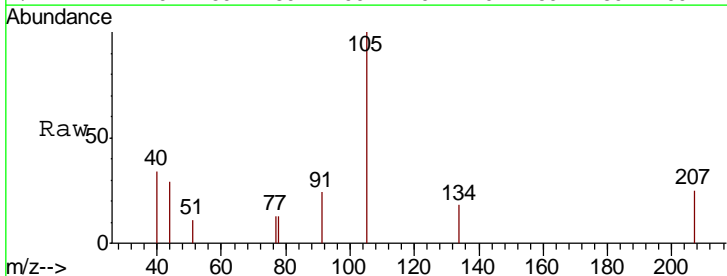
Instrument : MSVOA\_N  
 ClientSampled : VN0818WBL01

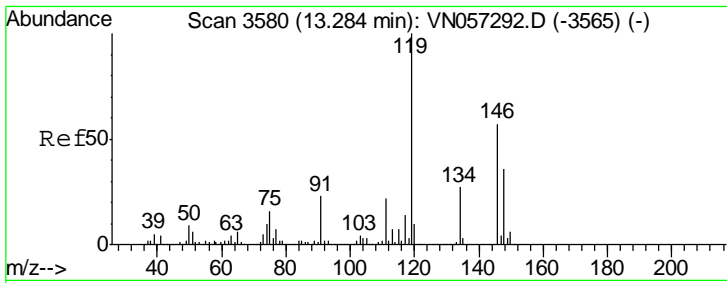
Tgt Ion	Resp	Lower	Upper
119	1859		
91	57.7	31.3	93.8
134	18.1	13.1	39.1



#85  
 sec-Butylbenzene  
 Concen: Below Cal  
 RT: 13.18 min Scan# 3547  
 Delta R.T. 0.00 min  
 Lab File: VN057360.D  
 Acq: 16 Aug 2019 17:58

Tgt Ion	Resp	Lower	Upper
105	3126		
134	12.5	10.4	31.2

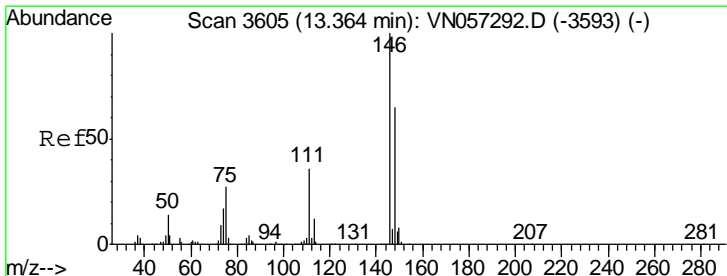
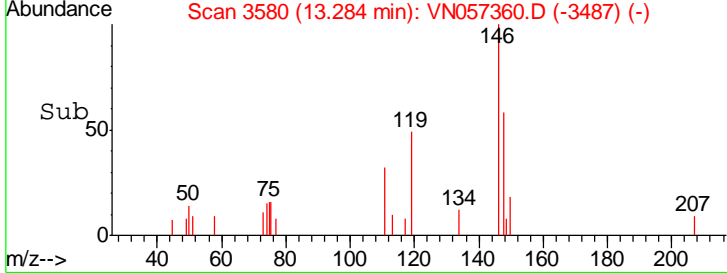
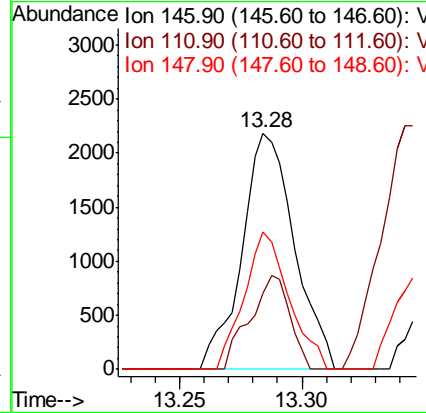
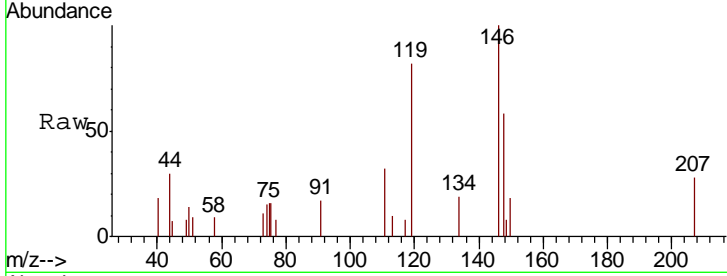




#87  
 1,3-Dichlorobenzene  
 Concen: 0.272 ug/l  
 RT: 13.28 min Scan# 3580  
 Delta R.T. 0.00 min  
 Lab File: VN057360.D  
 Acq: 16 Aug 2019 17:58

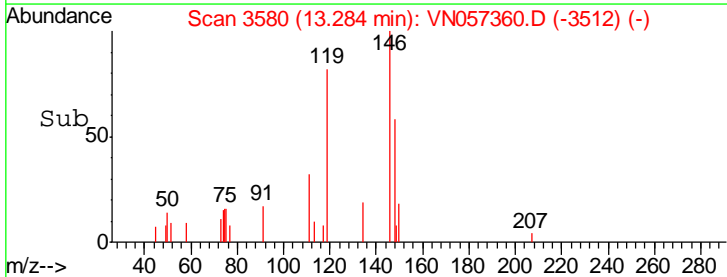
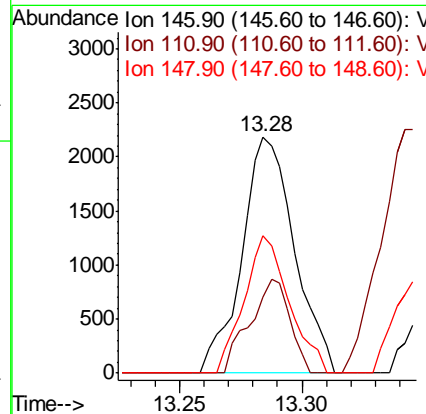
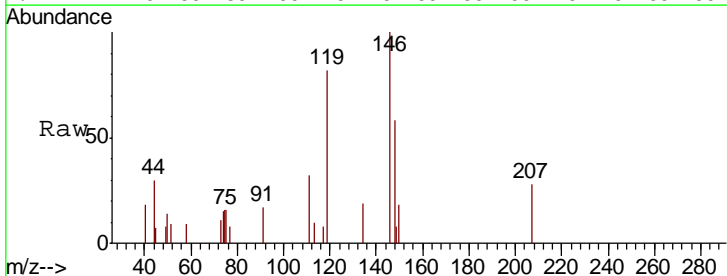
Instrument :  
 MSVOA\_N  
 ClientSampled :  
 VN0818WBL01

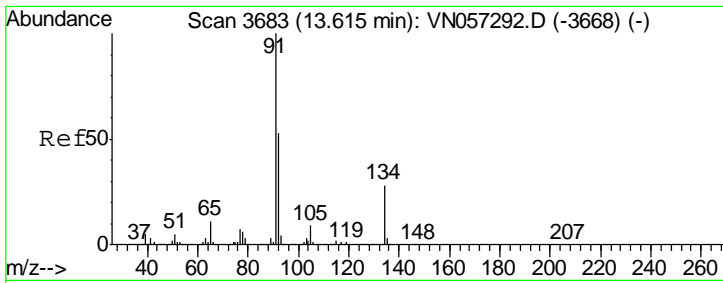
Tgt Ion	Resp	Lower	Upper
146	100		
111	30.1	18.7	56.1
148	49.5	31.7	95.1



#88  
 1,4-Dichlorobenzene  
 Concen: 0.286 ug/l  
 RT: 13.28 min Scan# 3580  
 Delta R.T. -0.08 min  
 Lab File: VN057360.D  
 Acq: 16 Aug 2019 17:58

Tgt Ion	Resp	Lower	Upper
146	100		
111	30.1	18.4	55.4
148	49.5	32.5	97.4



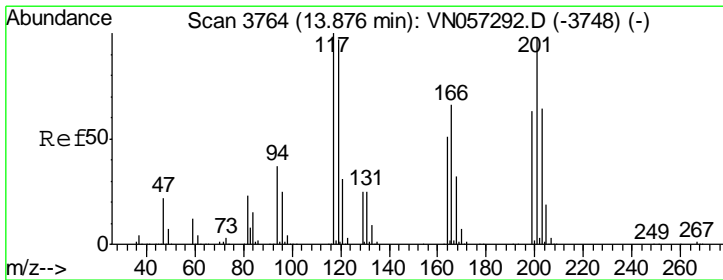
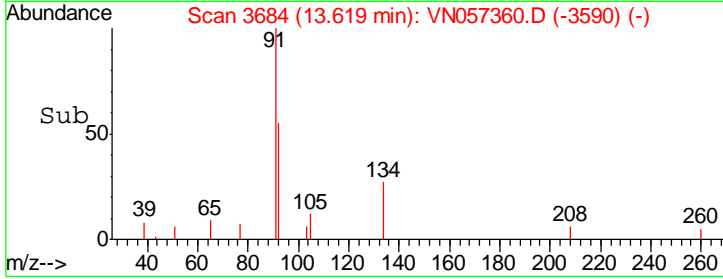
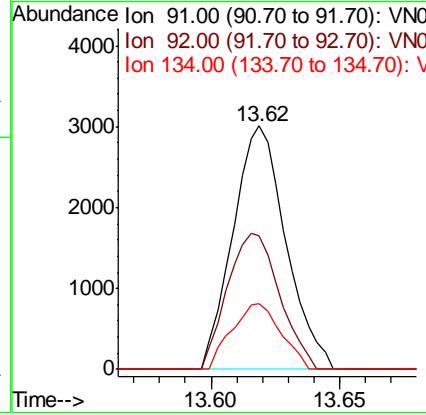
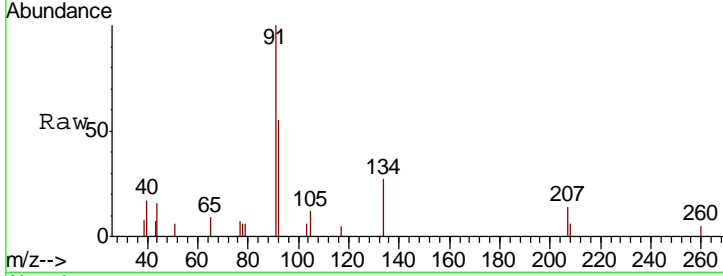


#89  
 n-Butylbenzene  
 Concen: 0.240 ug/l  
 RT: 13.62 min Scan# 3684  
 Delta R.T. 0.00 min  
 Lab File: VN057360.D  
 Acq: 16 Aug 2019 17:58

Instrument : MSVOA\_N  
 ClientSampled : VN0818WBL01

Tgt Ion: 91 Resp: 4308

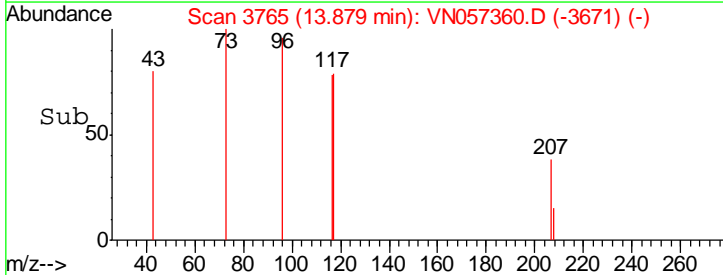
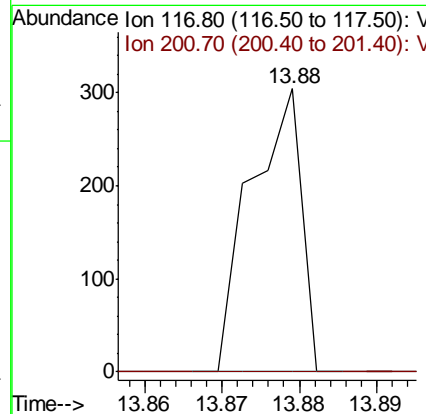
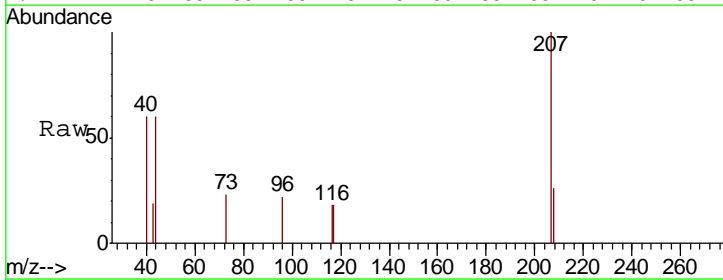
Ion	Ratio	Lower	Upper
91	100		
92	55.0	26.2	78.6
134	25.0	13.9	41.7



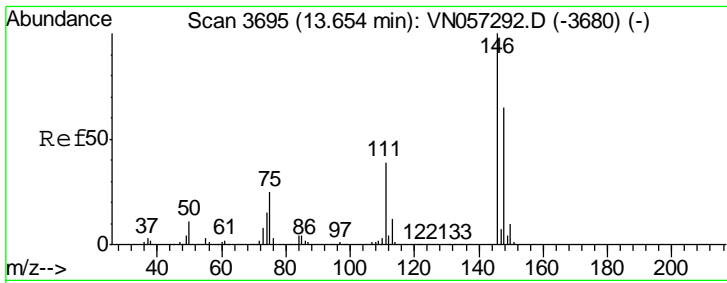
#90  
 Hexachloroethane  
 Concen: Below Cal  
 RT: 13.88 min Scan# 3765  
 Delta R.T. 0.00 min  
 Lab File: VN057360.D  
 Acq: 16 Aug 2019 17:58

Tgt Ion: 117 Resp: 140

Ion	Ratio	Lower	Upper
117	100		
201	0.0	48.4	145.0#





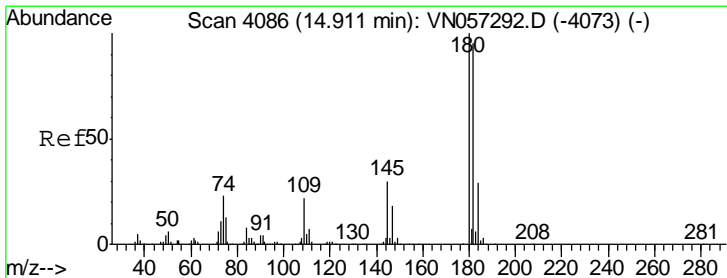
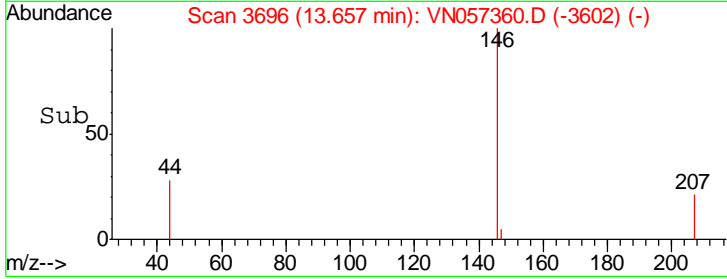
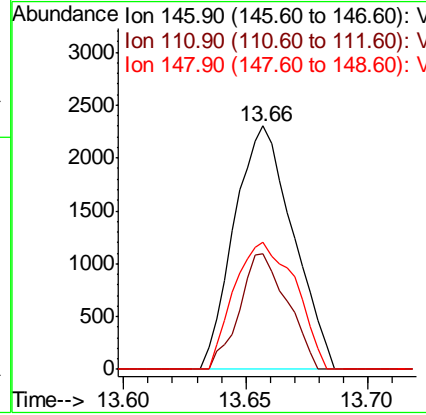
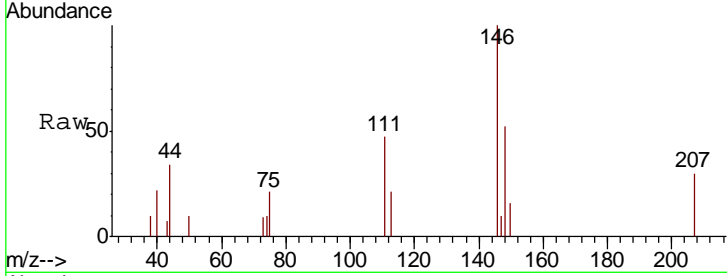


#91  
 1,2-Dichlorobenzene  
 Concen: 0.345 ug/l  
 RT: 13.66 min Scan# 3696  
 Delta R.T. 0.00 min  
 Lab File: VN057360.D  
 Acq: 16 Aug 2019 17:58

Instrument :  
 MSVOA\_N  
 ClientSampled :  
 VN0818WBL01

Tgt Ion:146 Resp: 3848

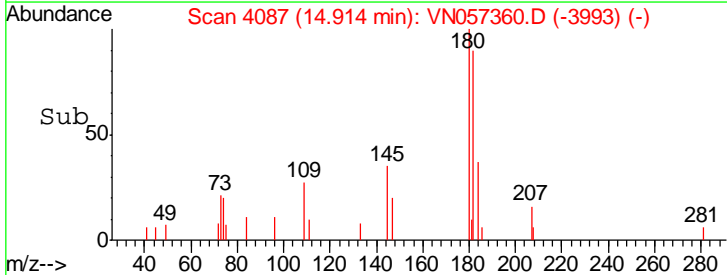
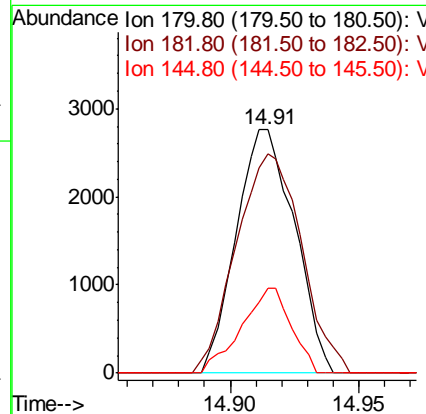
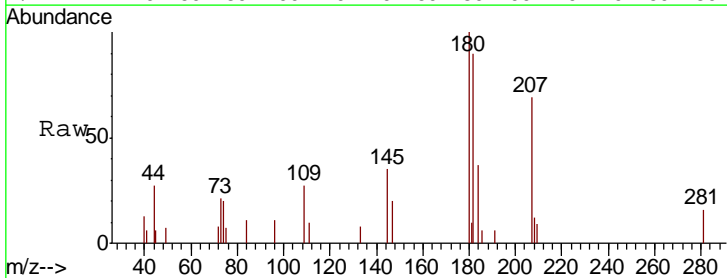
Ion	Ratio	Lower	Upper
146	100		
111	38.5	19.7	59.1
148	54.7	32.0	96.0

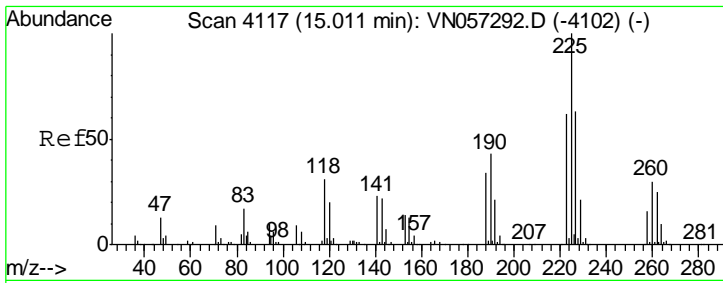


#93  
 1,2,4-Trichlorobenzene  
 Concen: 6.228 ug/l  
 RT: 14.91 min Scan# 4087  
 Delta R.T. 0.00 min  
 Lab File: VN057360.D  
 Acq: 16 Aug 2019 17:58

Tgt Ion:180 Resp: 4356

Ion	Ratio	Lower	Upper
180	100		
182	100.6	48.0	144.2
145	29.9	14.5	43.6

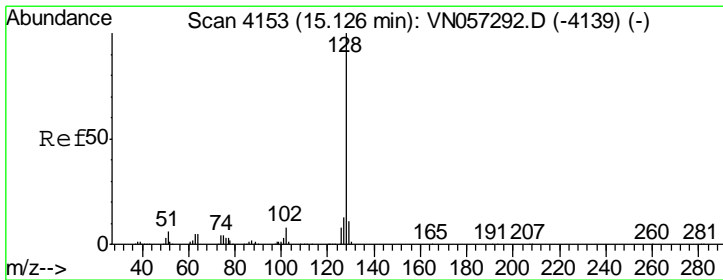
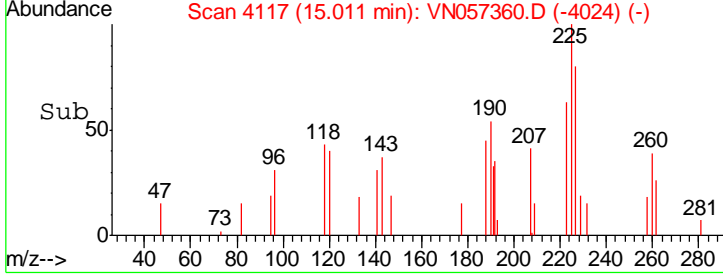
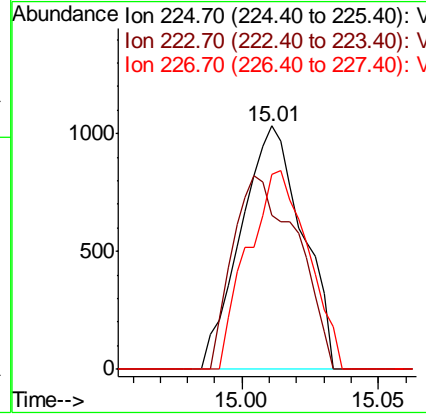
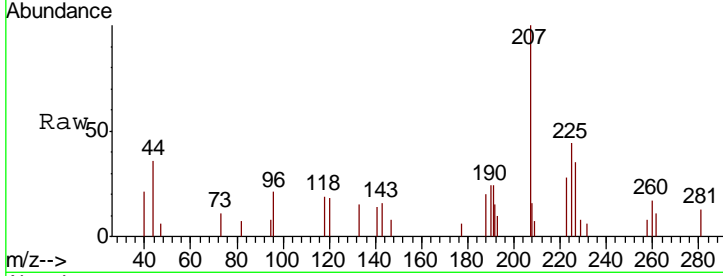




#94  
 Hexachlorobutadiene  
 Concen: Below Cal  
 RT: 15.01 min Scan# 4117  
 Delta R.T. 0.00 min  
 Lab File: VN057360.D  
 Acq: 16 Aug 2019 17:58

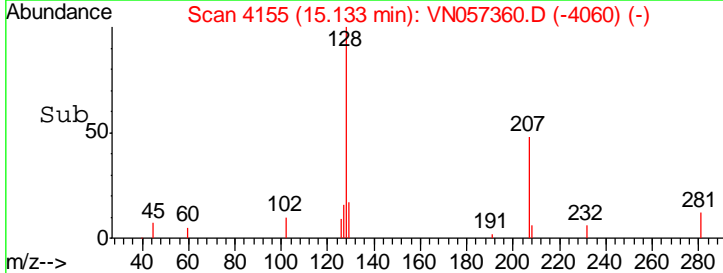
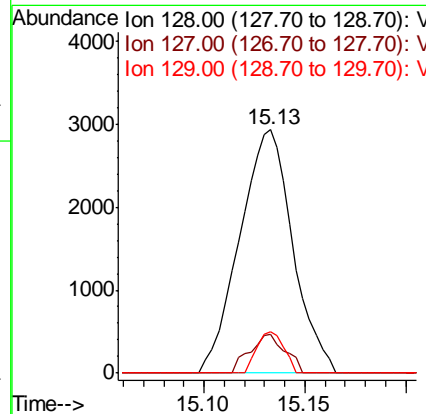
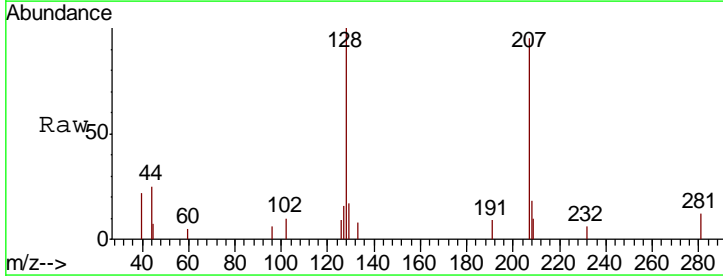
Instrument : MSVOA\_N  
 ClientSampled : VN0818WBL01

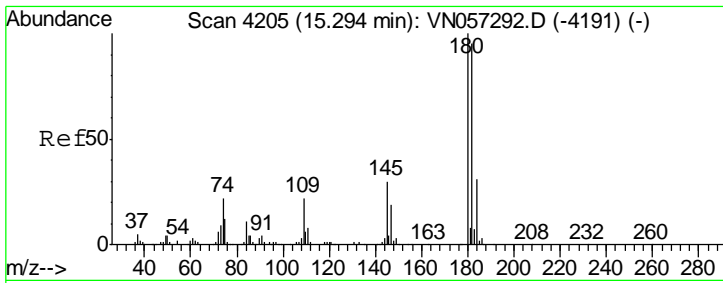
Tgt Ion	Resp	Lower	Upper
225	100		
223	83.8	30.7	92.1
227	80.1	30.9	92.7



#95  
 Naphthalene  
 Concen: Below Cal  
 RT: 15.13 min Scan# 4155  
 Delta R.T. 0.01 min  
 Lab File: VN057360.D  
 Acq: 16 Aug 2019 17:58

Tgt Ion	Resp	Lower	Upper
128	100		
127	10.7	10.5	15.7
129	8.7	8.8	13.2#



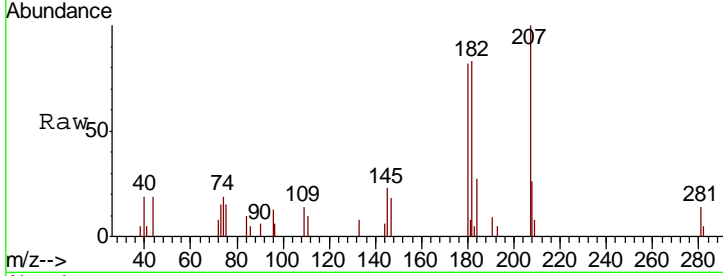


#96  
 1,2,3-Trichlorobenzene  
 Concen: Below Cal  
 RT: 15.29 min Scan# 4205  
 Delta R.T. 0.00 min  
 Lab File: VN057360.D  
 Acq: 16 Aug 2019 17:58

Instrument : MSVOA\_N  
 ClientSampled : VN0818WBL01

Tgt Ion:180 Resp: 4191

Ion	Ratio	Lower	Upper
180	100		
182	99.1	47.9	143.6
145	26.2	15.1	45.3



Abundance Ion 179.80 (179.50 to 180.50): V  
 Ion 181.80 (181.50 to 182.50): V  
 Ion 144.90 (144.60 to 145.60): V

