

Data Path : Z:\VOASRV\HPCHEM1\MSVOA N\DATA\VN081919\
 Data File : VN057424.D
 Acq On : 20 Aug 2019 2:02
 Operator : JC/SP
 Sample : K4386-27
 Misc : 5.00mL/MSVOA N/WATER
 ALS Vial : 44 Sample Multiplier: 1

Instrument :
 MSVOA_N
 Client Sampled :
 T8-E4-(2)

Manual Integrations
 APPROVED

MMDadoda
 8/21/2019 9:45:46 AM

Quant Time: Aug 20 09:23:02 2019
 Quant Method : Z:\VOASRV\HPCHEM1\MSVOA_N\METHODS\82N081519W.M
 Quant Title : SW846 8260
 QLast Update : Thu Aug 15 11:33:14 2019
 Response via : Initial Calibration

Internal Standards	R.T.	QIon	Response	Conc	Units	Dev(Min)
1) Pentafluorobenzene	7.66	168	1046842	50.00	ug/l	0.00
34) 1,4-Difluorobenzene	8.58	114	1458932	50.00	ug/l	0.00
63) Chlorobenzene-d5	11.41	117	1243348	50.00	ug/l	0.00
72) 1,4-Dichlorobenzene-d4	13.35	152	331253	50.00	ug/l	0.00
System Monitoring Compounds						
33) 1,2-Dichloroethane-d4	8.02	65	482397	42.39	ug/l	0.00
Spiked Amount	50.000		Recovery	=	84.78%	
35) Dibromofluoromethane	7.58	113	442846	46.31	ug/l	0.00
Spiked Amount	50.000		Recovery	=	92.62%	
50) Toluene-d8	10.08	98	1703083	48.69	ug/l	0.00
Spiked Amount	50.000		Recovery	=	97.38%	
62) 4-Bromofluorobenzene	12.40	95	450778	36.47	ug/l	0.00
Spiked Amount	50.000		Recovery	=	72.94%	
Target Compounds						
16) Acetone	3.81	43	11863m	3.005	ug/l	
43) Isopropyl Acetate	8.16	43	181629	8.477	ug/l #	83

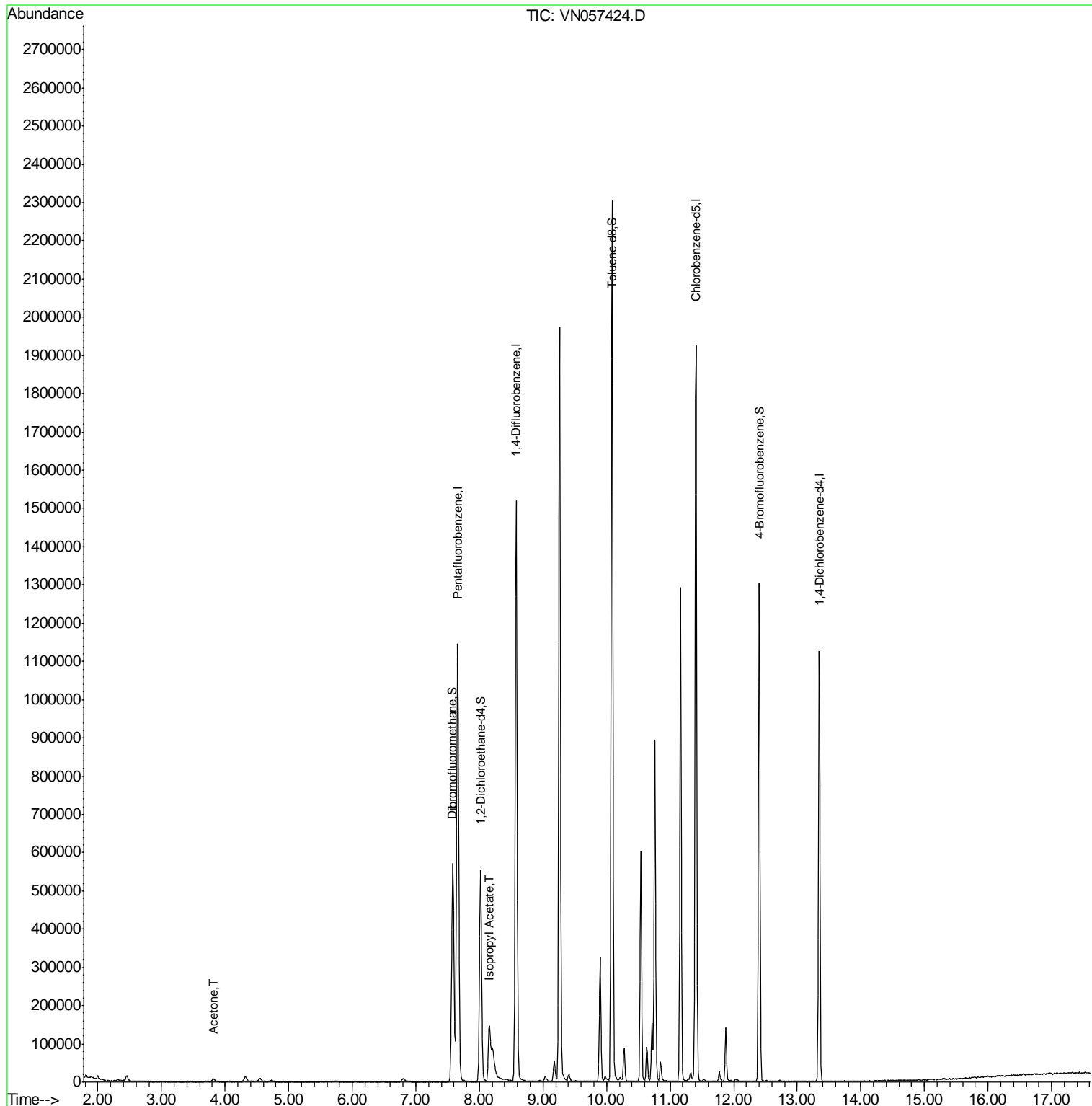
(#) = qualifier out of range (m) = manual integration (+) = signals summed

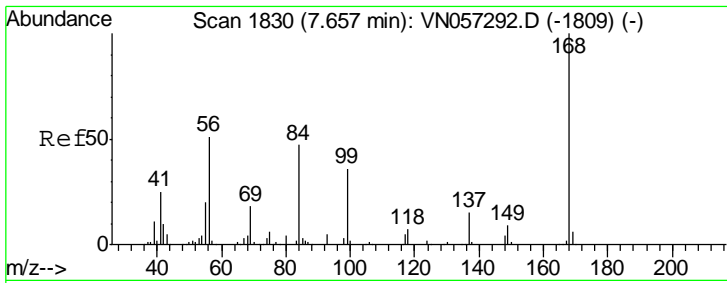
Data Path : Z:\VOASRV\HPCHEM1\MSVOA N\DATA\VN081919\
 Data File : VN057424.D
 Acq On : 20 Aug 2019 2:02
 Operator : JC/SP
 Sample : K4386-27
 Misc : 5.00mL/MSVOA N/WATER
 ALS Vial : 44 Sample Multiplier: 1

Instrument :
 MSVOA_N
 ClientSampled :
 T8-E4-(2)

Manual Integrations
 APPROVED
 MMDadoda
 8/21/2019 9:45:46 AM

Quant Time: Aug 20 09:23:02 2019
 Quant Method : Z:\VOASRV\HPCHEM1\MSVOA_N\METHODS\82N081519W.M
 Quant Title : SW846 8260
 QLast Update : Thu Aug 15 11:33:14 2019
 Response via : Initial Calibration





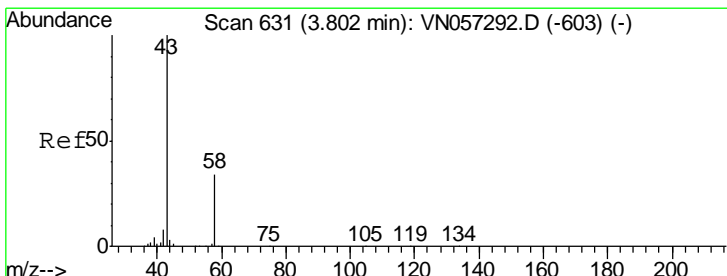
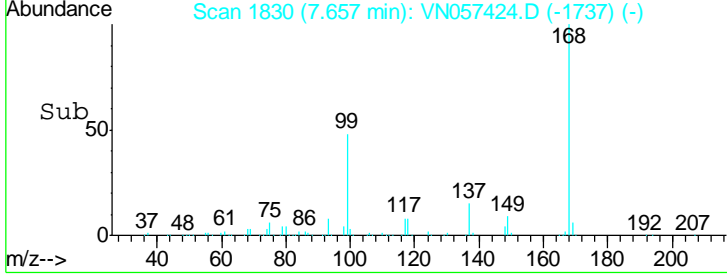
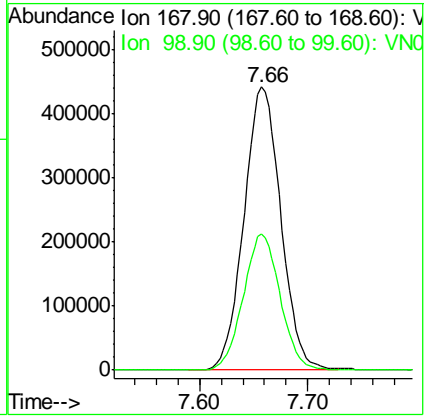
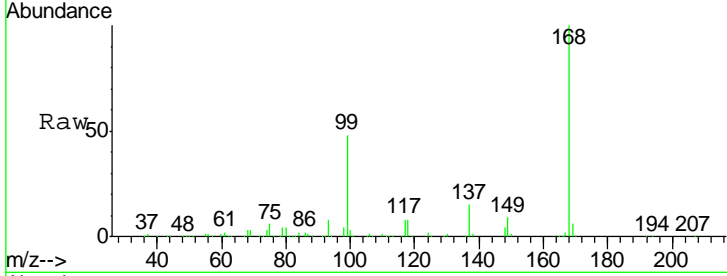
#1
 Pentafluorobenzene
 Concen: 50.000 ug/l
 RT: 7.66 min Scan# 1830
 Delta R.T. 0.00 min
 Lab File: VN057424.D
 Acq: 20 Aug 2019 2:02

Instrument : MSVOA_N
 ClientSampled : T8-E4-(2)

Tgt Ion: 168 Resp: 1046842

Ion	Ratio	Lower	Upper
168	100		
99	48.3	39.4	59.2

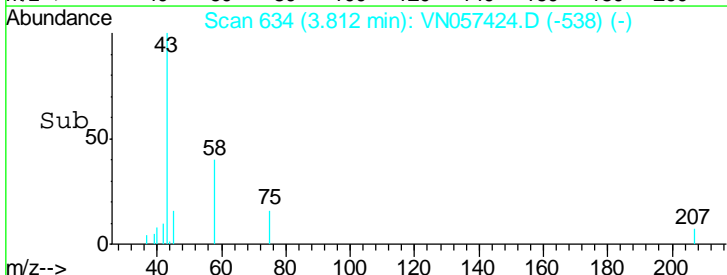
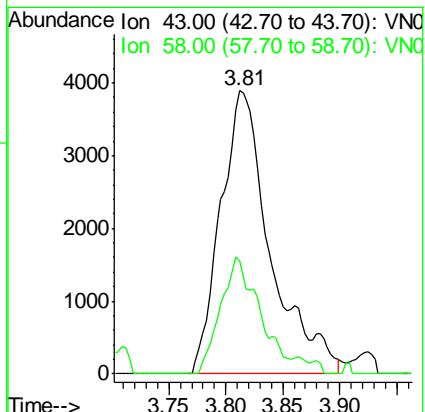
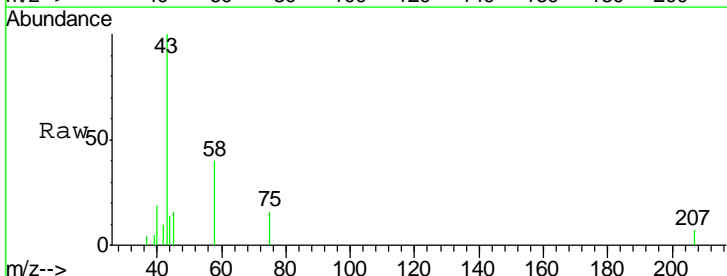
Manual Integrations
APPROVED
 MMDadoda
 8/21/2019 9:45:46 AM

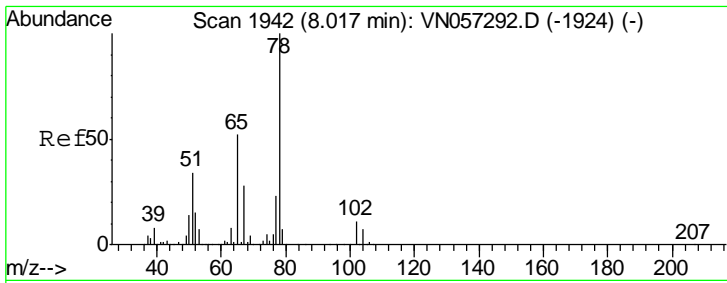


#16
 Acetone
 Concen: 3.005 ug/l m
 RT: 3.81 min Scan# 634
 Delta R.T. 0.01 min
 Lab File: VN057424.D
 Acq: 20 Aug 2019 2:02

Tgt Ion: 43 Resp: 11863

Ion	Ratio	Lower	Upper
43	100		
58	40.1	27.0	40.6



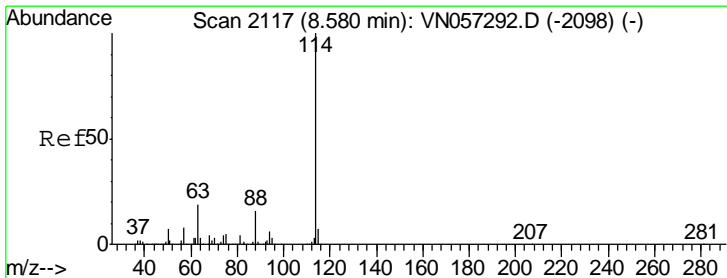
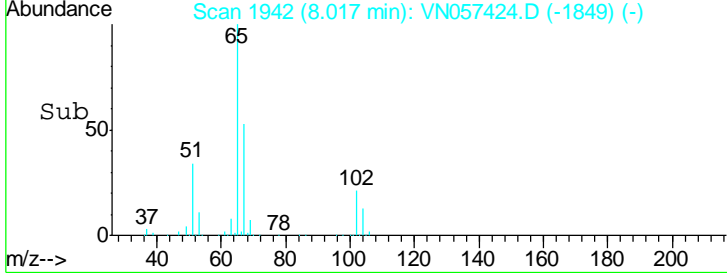
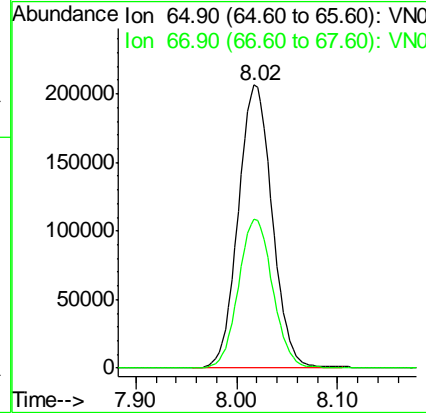
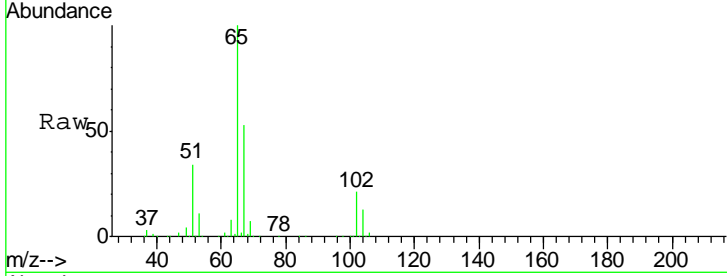


#33
 1,2-Dichloroethane-d4
 Concen: 42.389 ug/l
 RT: 8.02 min Scan# 1942
 Delta R.T. 0.00 min
 Lab File: VN057424.D
 Acq: 20 Aug 2019 2:02

Instrument :
 MSVOA_N
Client Sampled :
 T8-E4-(2)

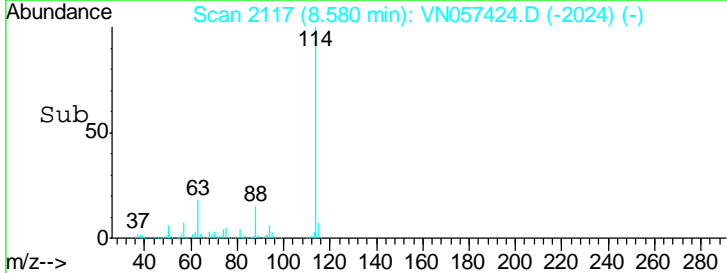
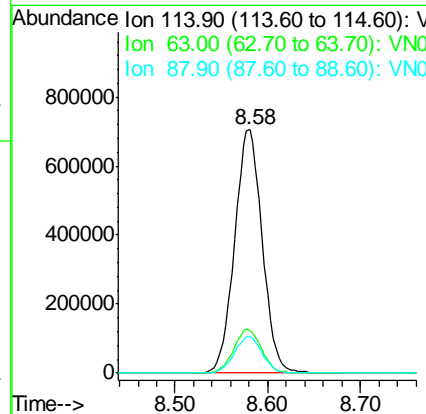
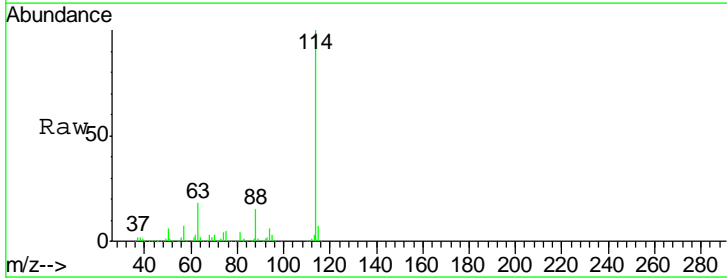
Tgt Ion	Resp	Lower	Upper
65	100		
67	53.1	0.0	107.4

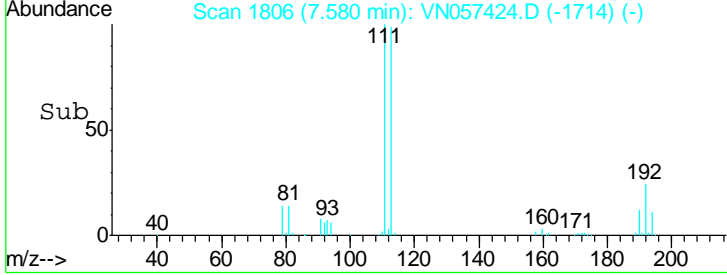
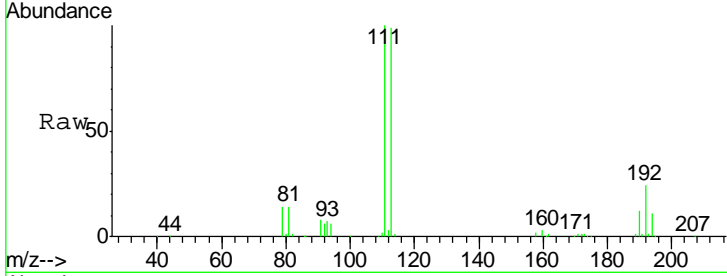
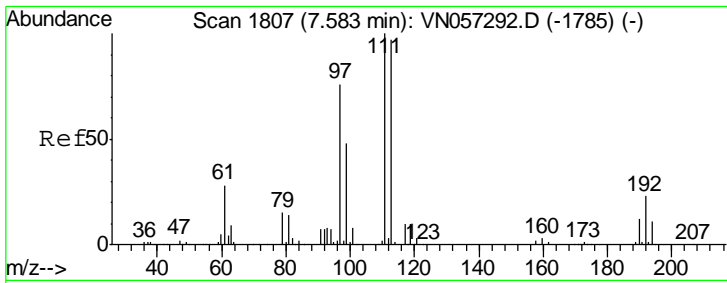
Manual Integrations
APPROVED
 MMDadoda
 8/21/2019 9:45:46 AM



#34
 1,4-Difluorobenzene
 Concen: 50.000 ug/l
 RT: 8.58 min Scan# 2117
 Delta R.T. 0.00 min
 Lab File: VN057424.D
 Acq: 20 Aug 2019 2:02

Tgt Ion	Resp	Lower	Upper
114	100		
63	17.8	0.0	38.8
88	15.0	0.0	31.4



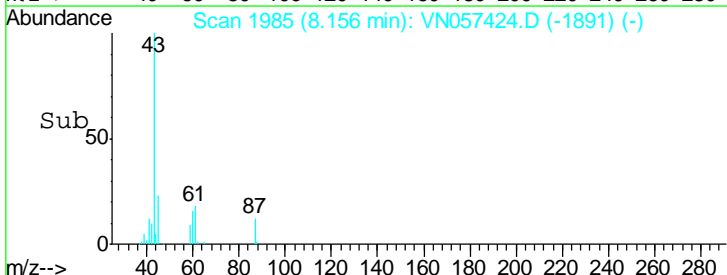
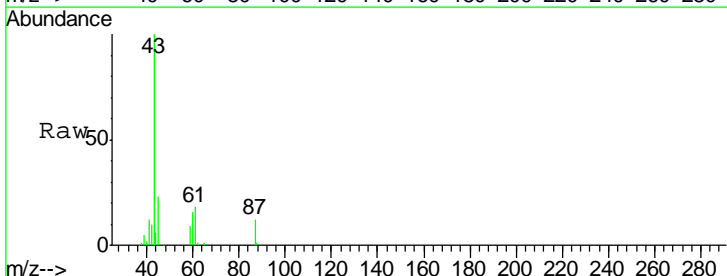
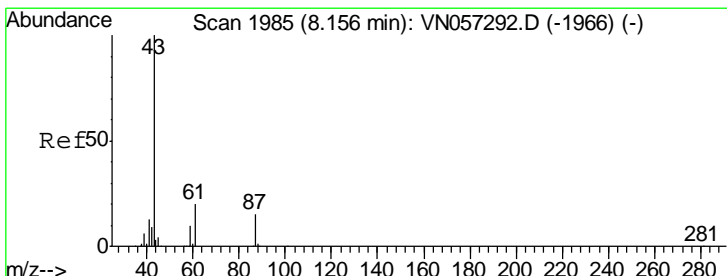
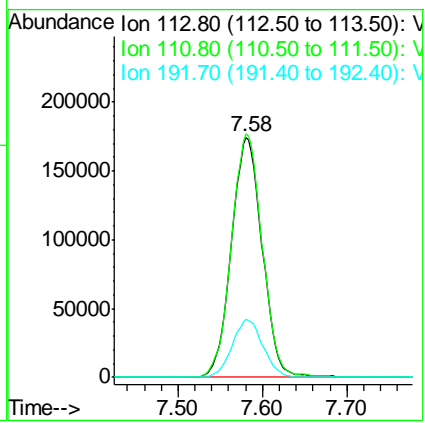


#35
 Dibromofluoromethane
 Concen: 46.305 ug/l
 RT: 7.58 min Scan# 1806
 Delta R.T. -0.00 min
 Lab File: VN057424.D
 Acq: 20 Aug 2019 2:02

Tgt Ion	Resp	Lower	Upper
113	100		
111	101.1	82.1	123.1
192	24.2	19.3	28.9

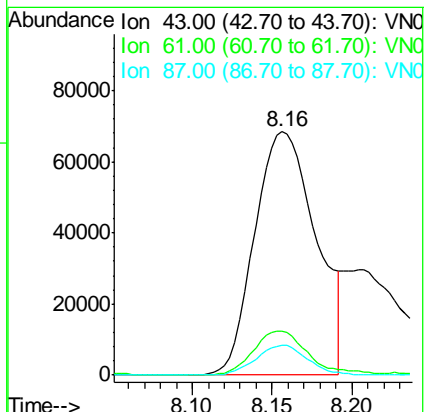
Instrument : MSVOA_N
 Client Sampled : T8-E4-(2)

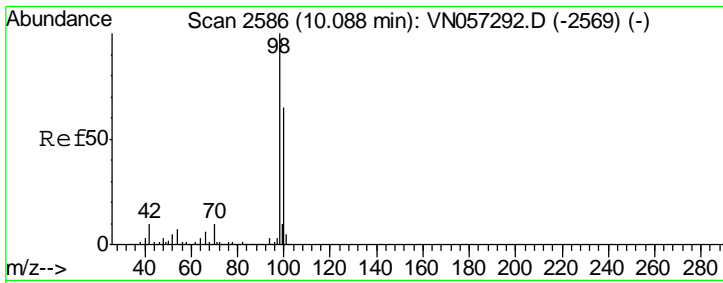
Manual Integrations APPROVED
 MMDadoda
 8/21/2019 9:45:46 AM



#43
 Isopropyl Acetate
 Concen: 8.477 ug/l
 RT: 8.16 min Scan# 1985
 Delta R.T. 0.00 min
 Lab File: VN057424.D
 Acq: 20 Aug 2019 2:02

Tgt Ion	Resp	Lower	Upper
43	100		
61	16.3	21.6	32.4#
87	10.3	11.4	17.0#





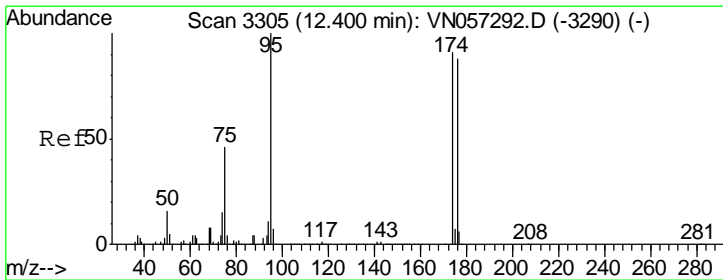
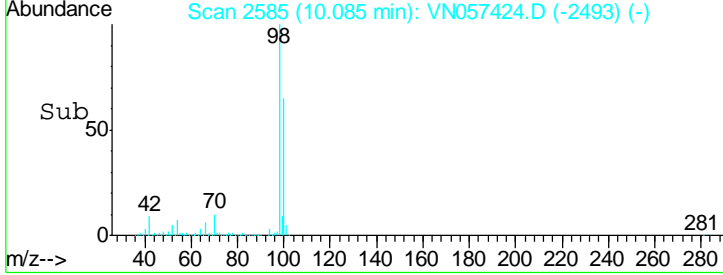
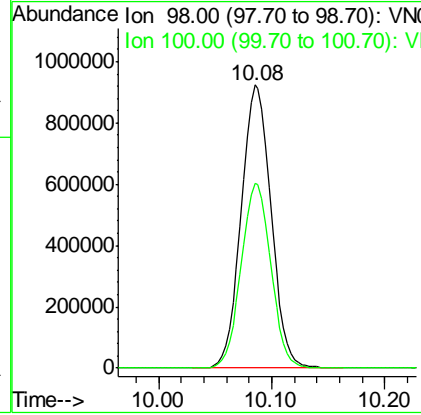
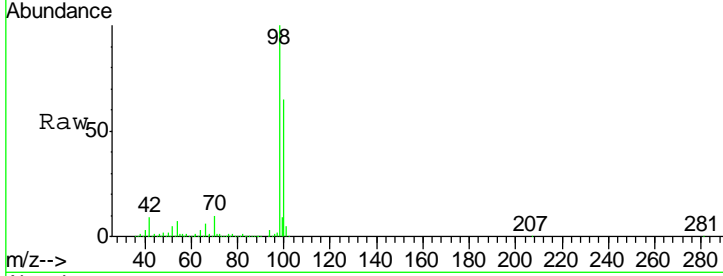
#50
 Toluene-d8
 Concen: 48.688 ug/l
 RT: 10.08 min Scan# 2585
 Delta R.T. -0.00 min
 Lab File: VN057424.D
 Acq: 20 Aug 2019 2:02

Instrument :
 MSVOA_N
ClientSampled :
 T8-E4-(2)

Tgt Ion	Resp	Lower	Upper
98	1703083		
98	100		
100	64.9	51.9	77.9

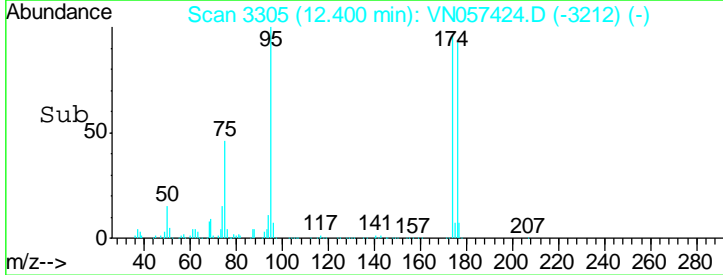
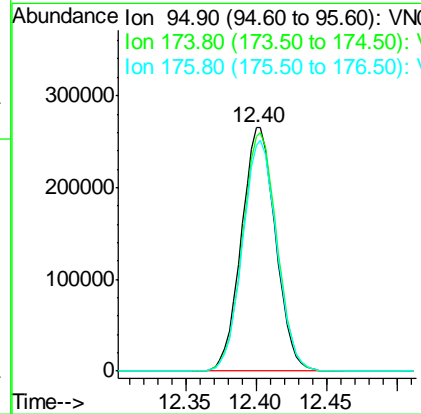
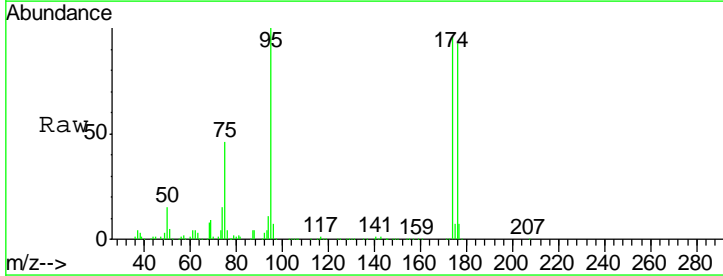
Manual Integrations
APPROVED

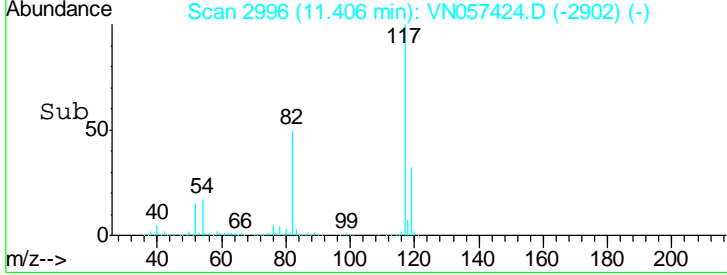
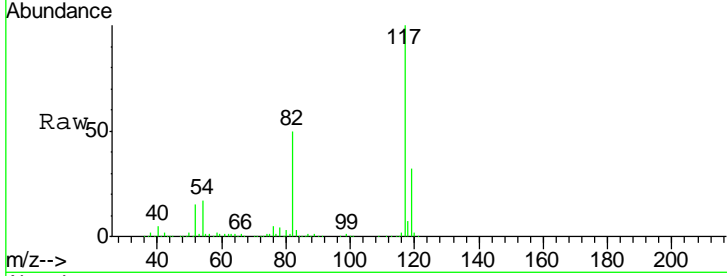
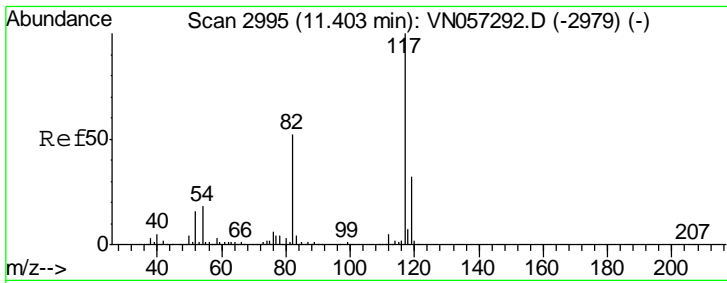
MMDadoda
 8/21/2019 9:45:46 AM



#62
 4-Bromofluorobenzene
 Concen: 36.467 ug/l
 RT: 12.40 min Scan# 3305
 Delta R.T. 0.00 min
 Lab File: VN057424.D
 Acq: 20 Aug 2019 2:02

Tgt Ion	Resp	Lower	Upper
95	450778		
95	100		
174	98.5	0.0	185.0
176	94.9	0.0	181.0



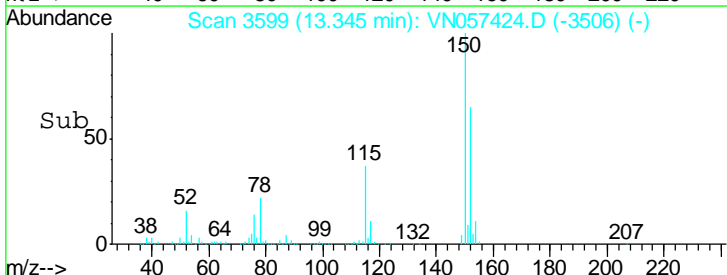
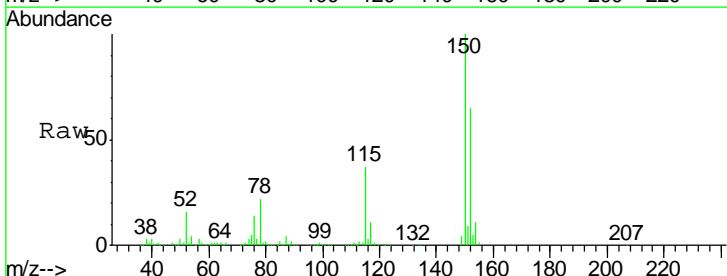
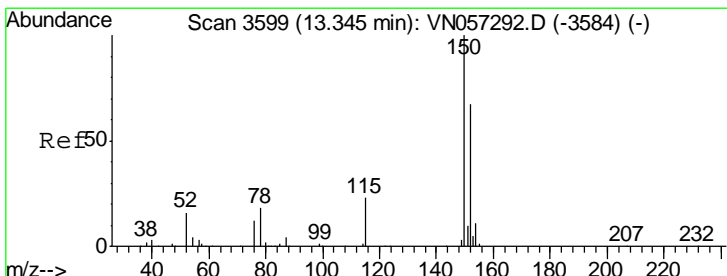
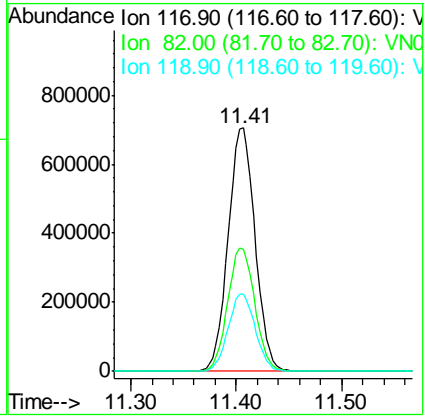


#63
 Chlorobenzene-d5
 Concen: 50.000 ug/l
 RT: 11.41 min Scan# 2996
 Delta R.T. 0.00 min
 Lab File: VN057424.D
 Acq: 20 Aug 2019 2:02

Tgt Ion	Resp	Lower	Upper
117	1243348		
82	50.2	41.2	61.8
119	31.9	25.8	38.8

Instrument : MSVOA_N
 ClientSampled : T8-E4-(2)

Manual Integrations APPROVED
 MMDadoda
 8/21/2019 9:45:46 AM



#72
 1,4-Dichlorobenzene-d4
 Concen: 50.000 ug/l
 RT: 13.35 min Scan# 3599
 Delta R.T. 0.00 min
 Lab File: VN057424.D
 Acq: 20 Aug 2019 2:02

Tgt Ion	Resp	Lower	Upper
152	331253		
115	57.4	27.3	81.9
150	156.3	0.0	344.4

