

Data Path : Z:\VOASRV\HPCHEM1\MSVOA N\DATA\VN081920\
 Data File : VN063003.D
 Acq On : 19 Aug 2020 10:44
 Operator : JC/MD
 Sample : VN0819WBL01
 Misc : 5.00mL/MSVOA N/WATER
 ALS Vial : 4 Sample Multiplier: 1

Instrument :
 MSVOA_N
 ClientSampleId :
 VN0819WBL01

Quant Time: Aug 19 14:09:15 2020
 Quant Method : Z:\VOASRV\HPCHEM1\MSVOA_N\METHODS\82N081820W.M
 Quant Title : SW846 8260
 QLast Update : Wed Aug 19 06:09:27 2020
 Response via : Initial Calibration

Internal Standards	R.T.	QIon	Response	Conc	Units	Dev(Min)
1) Pentafluorobenzene	7.63	168	145381	50.00	ug/l	0.00
34) 1,4-Difluorobenzene	8.55	114	242663	50.00	ug/l	0.00
63) Chlorobenzene-d5	11.38	117	243822	50.00	ug/l	0.00
72) 1,4-Dichlorobenzene-d4	13.32	152	88716	50.00	ug/l	0.00

System Monitoring Compounds

33) 1,2-Dichloroethane-d4	7.99	65	91422	53.06	ug/l	0.00
Spiked Amount	50.000		Recovery	=	106.12%	
35) Dibromofluoromethane	7.55	113	81443	51.51	ug/l	0.00
Spiked Amount	50.000		Recovery	=	103.02%	
50) Toluene-d8	10.06	98	304068	50.07	ug/l	0.00
Spiked Amount	50.000		Recovery	=	100.14%	
62) 4-Bromofluorobenzene	12.38	95	101398	47.31	ug/l	0.00
Spiked Amount	50.000		Recovery	=	94.62%	

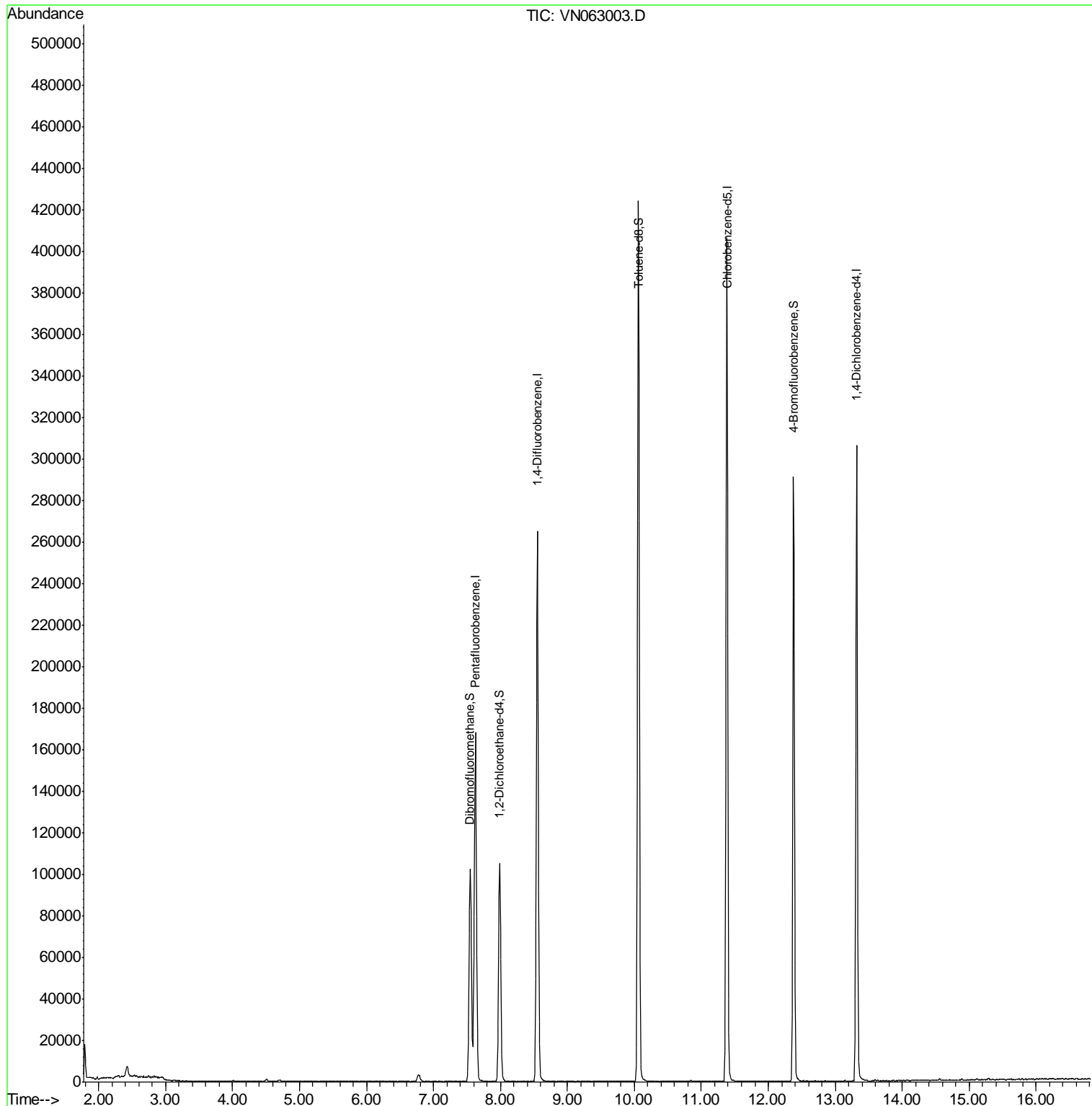
Target Compounds Qvalue

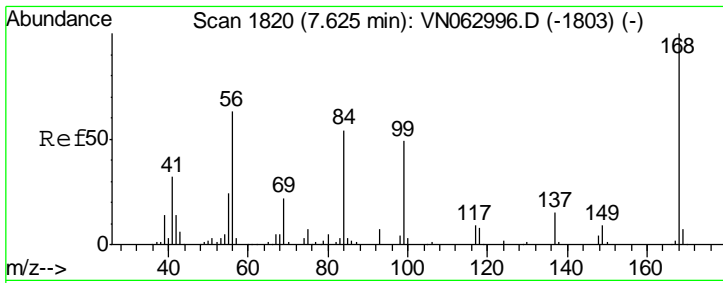
(#) = qualifier out of range (m) = manual integration (+) = signals summed

Data Path : Z:\VOASRV\HPCHEM1\MSVOA N\DATA\VN081920\
 Data File : VN063003.D
 Acq On : 19 Aug 2020 10:44
 Operator : JC/MD
 Sample : VN0819WBL01
 Misc : 5.00mL/MSVOA N/WATER
 ALS Vial : 4 Sample Multiplier: 1

Instrument :
 MSVOA_N
 ClientSampleId :
 VN0819WBL01

Quant Time: Aug 19 14:09:15 2020
 Quant Method : Z:\VOASRV\HPCHEM1\MSVOA_N\METHODS\82N081820W.M
 Quant Title : SW846 8260
 QLast Update : Wed Aug 19 06:09:27 2020
 Response via : Initial Calibration

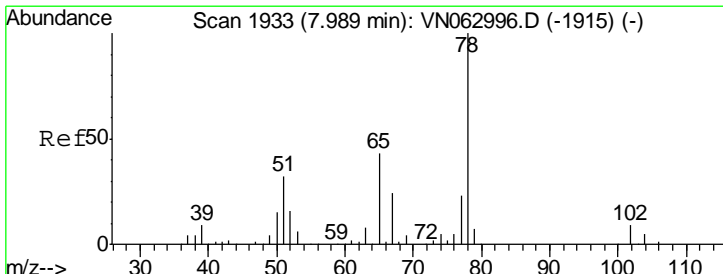
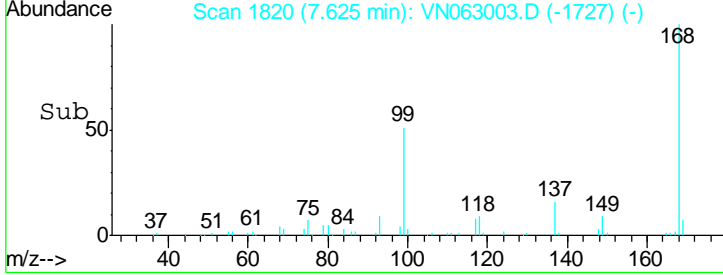
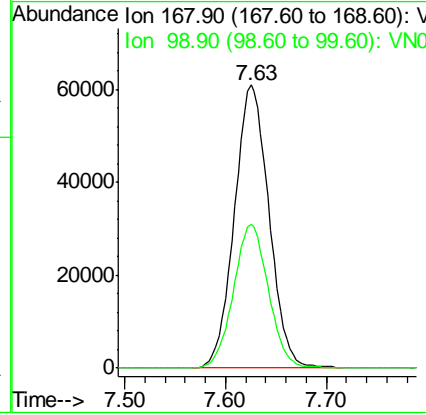
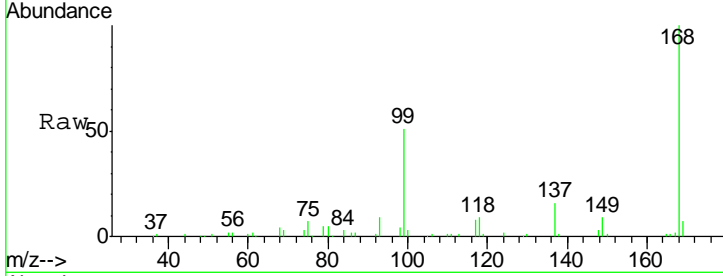




#1
 Pentafluorobenzene
 Concen: 50.000 ug/l
 RT: 7.63 min Scan# 1820
 Delta R.T. 0.00 min
 Lab File: VN063003.D
 Acq: 19 Aug 2020 10:44

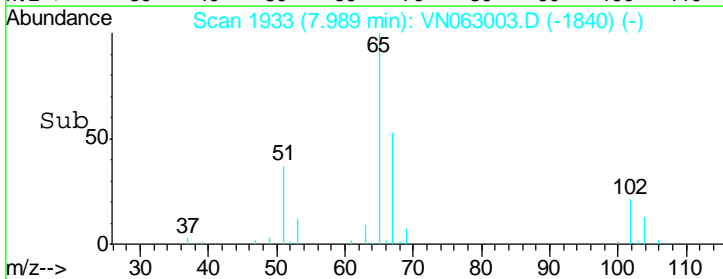
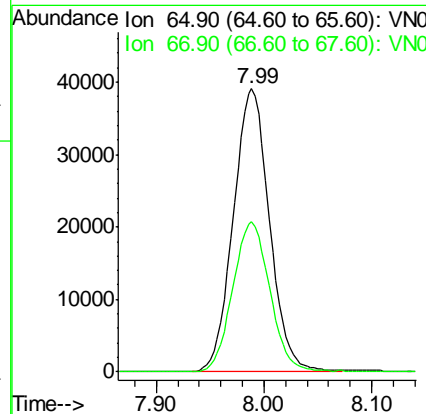
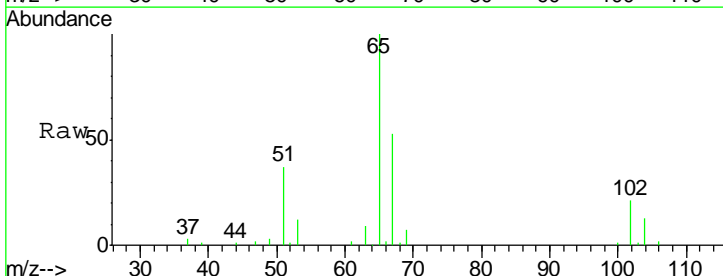
Instrument :
 MSVOA_N
ClientSampled :
 VN0819WBL01

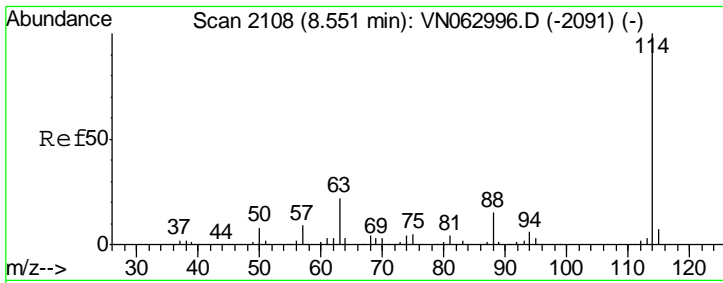
Tot Ion: 168 Resp: 145381
 Ion Ratio Lower Upper
 168 100
 99 50.9 42.0 63.0



#33
 1,2-Dichloroethane-d4
 Concen: 53.059 ug/l
 RT: 7.99 min Scan# 1933
 Delta R.T. 0.00 min
 Lab File: VN063003.D
 Acq: 19 Aug 2020 10:44

Tgt Ion: 65 Resp: 91422
 Ion Ratio Lower Upper
 65 100
 67 54.2 0.0 112.0

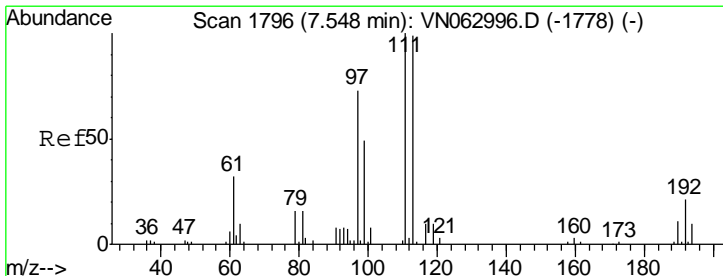
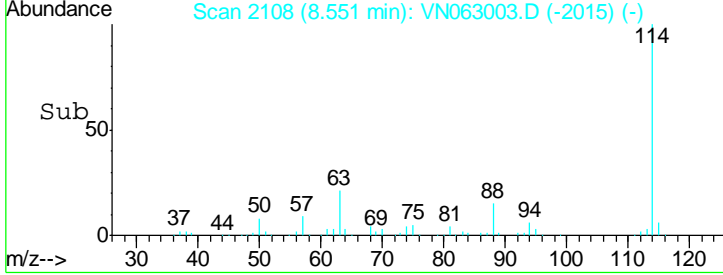
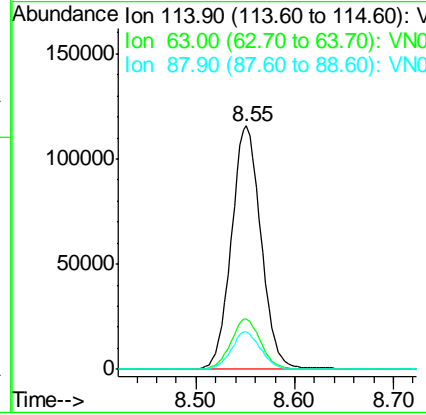
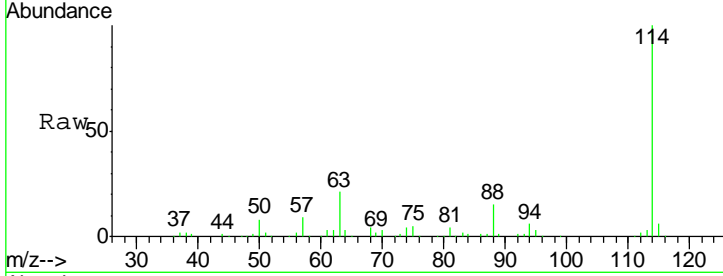




#34
 1,4-Difluorobenzene
 Concen: 50.000 ug/l
 RT: 8.55 min Scan# 2108
 Delta R.T. 0.00 min
 Lab File: VN063003.D
 Acq: 19 Aug 2020 10:44

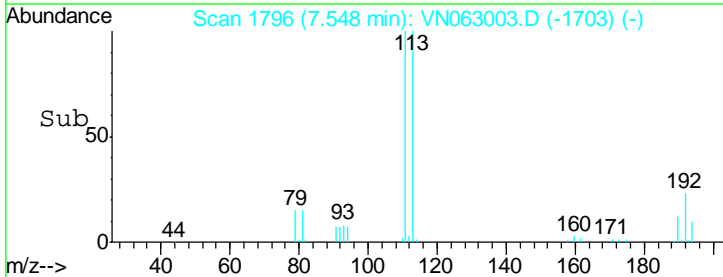
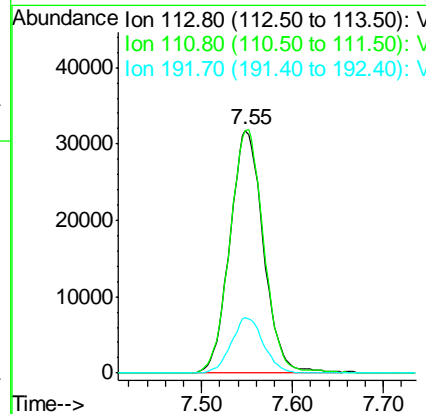
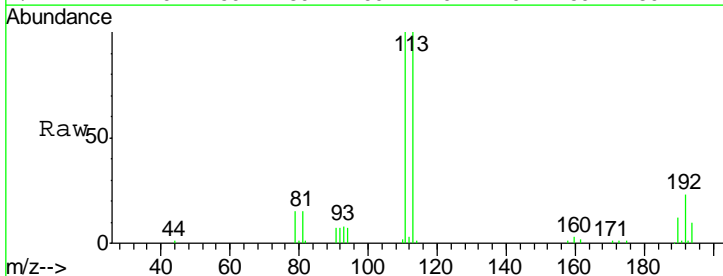
Instrument :
 MSVOA_N
 ClientSampleId :
 VN0819WBL01

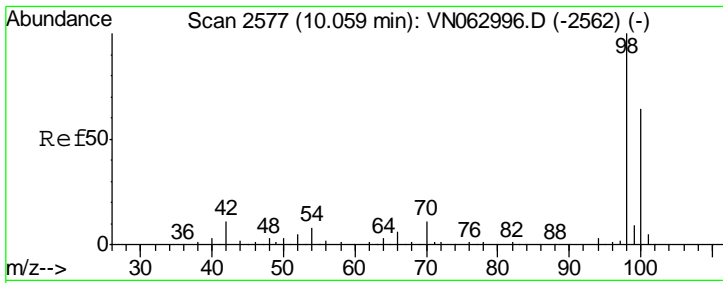
Tgt Ion	Resp	Lower	Upper
114	242663		
63	20.6	0.0	43.2
88	15.3	0.0	30.6



#35
 Dibromofluoromethane
 Concen: 51.508 ug/l
 RT: 7.55 min Scan# 1796
 Delta R.T. 0.00 min
 Lab File: VN063003.D
 Acq: 19 Aug 2020 10:44

Tgt Ion	Resp	Lower	Upper
113	81443		
111	100.3	81.7	122.5
192	21.7	17.5	26.3

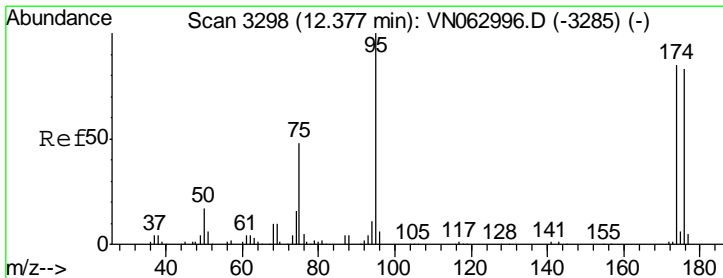
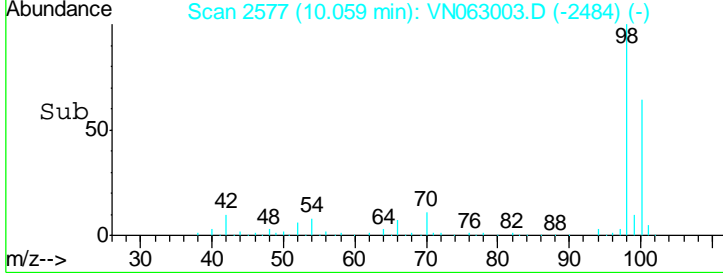
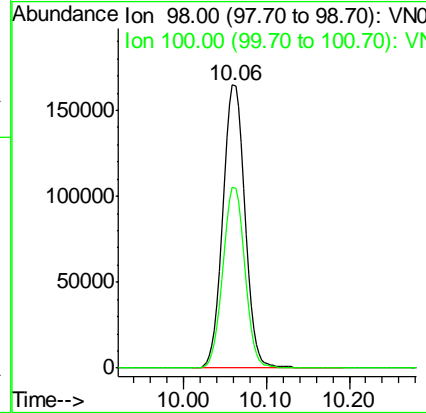
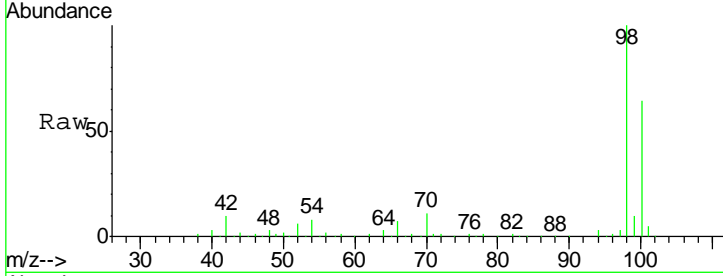




#50
 Toluene-d8
 Concen: 50.065 ug/l
 RT: 10.06 min Scan# 2577
 Delta R.T. 0.00 min
 Lab File: VN063003.D
 Acq: 19 Aug 2020 10:44

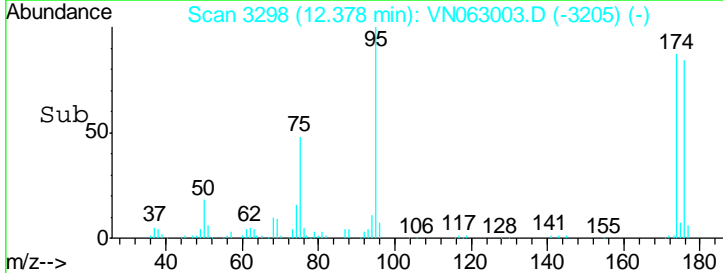
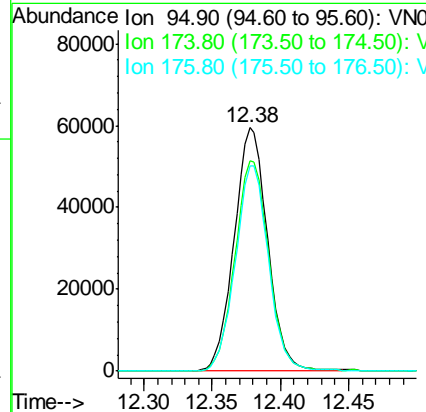
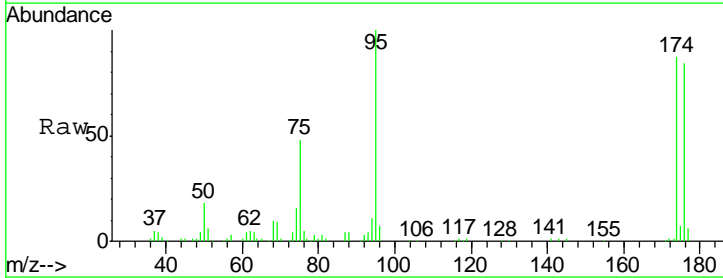
Instrument : MSVOA_N
 ClientSampled : VN0819WBL01

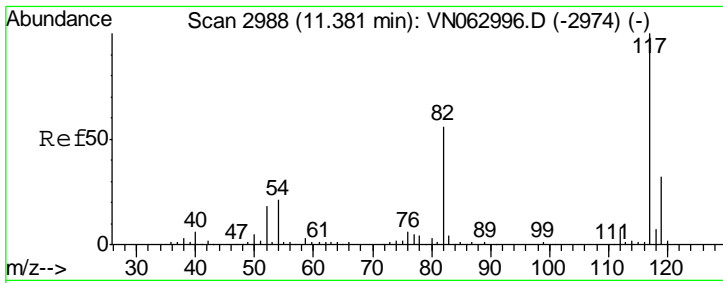
Tgt Ion	Resp	Lower	Upper
98	100		
100	63.3	51.2	76.8



#62
 4-Bromofluorobenzene
 Concen: 47.311 ug/l
 RT: 12.38 min Scan# 3298
 Delta R.T. 0.00 min
 Lab File: VN063003.D
 Acq: 19 Aug 2020 10:44

Tgt Ion	Resp	Lower	Upper
95	100		
174	87.2	0.0	170.8
176	83.5	0.0	164.8

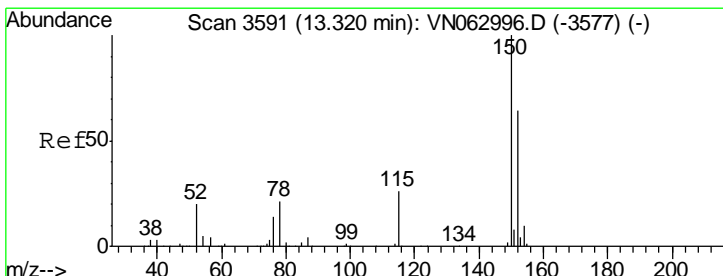
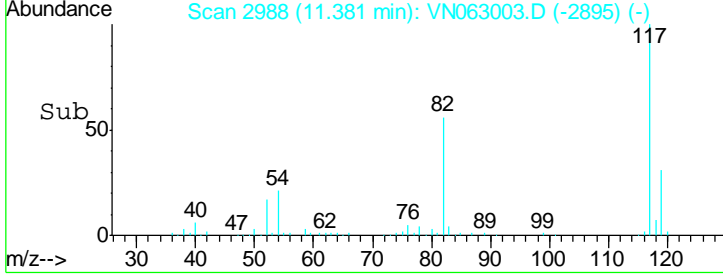
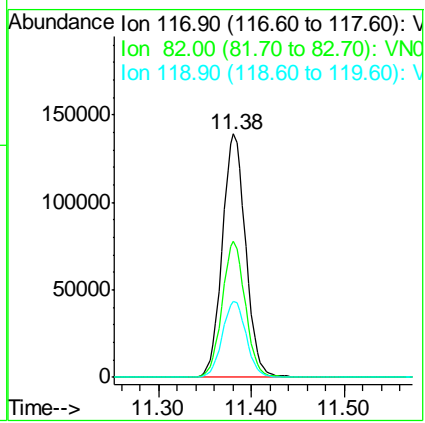
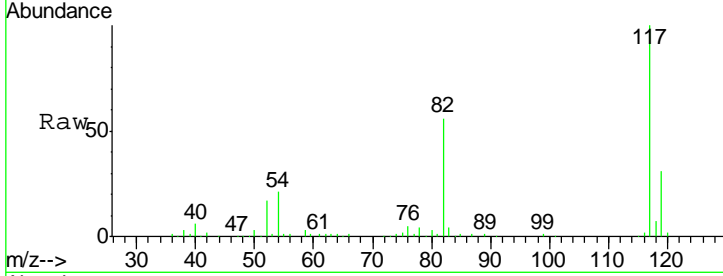




#63
 Chlorobenzene-d5
 Concen: 50.000 ug/l
 RT: 11.38 min Scan# 2988
 Delta R.T. 0.00 min
 Lab File: VN063003.D
 Acq: 19 Aug 2020 10:44

Instrument :
 MSVOA_N
 ClientSampled :
 VN0819WBL01

Tgt Ion	Resp	Lower	Upper
117	100		
82	55.8	44.5	66.7
119	31.4	25.5	38.3



#72
 1,4-Dichlorobenzene-d4
 Concen: 50.000 ug/l
 RT: 13.32 min Scan# 3591
 Delta R.T. 0.00 min
 Lab File: VN063003.D
 Acq: 19 Aug 2020 10:44

Tgt Ion	Resp	Lower	Upper
152	100		
115	56.3	28.7	86.3
150	157.0	0.0	348.8

