

Data Path : Z:\voasrv\HPCHEM1\MSVOA_N\Data\VN081921\
 Data File : VN068210.D
 Acq On : 19 Aug 2021 12:15
 Operator : JC/MD
 Sample : VN0819WBL01
 Misc : 5.00mL/MSVOA_N/WATER
 ALS Vial : 4 Sample Multiplier: 1

Instrument :
 MSVOA_N
 ClientSampleId :
 VN0819WBL01

Quant Time: Aug 19 13:03:41 2021
 Quant Method : Z:\voasrv\HPCHEM1\MSVOA_N\methods\82N081721W.M
 Quant Title : SW846 8260
 QLast Update : Tue Aug 17 13:09:49 2021
 Response via : Initial Calibration

Compound	R.T.	QIon	Response	Conc	Units	Dev(Min)

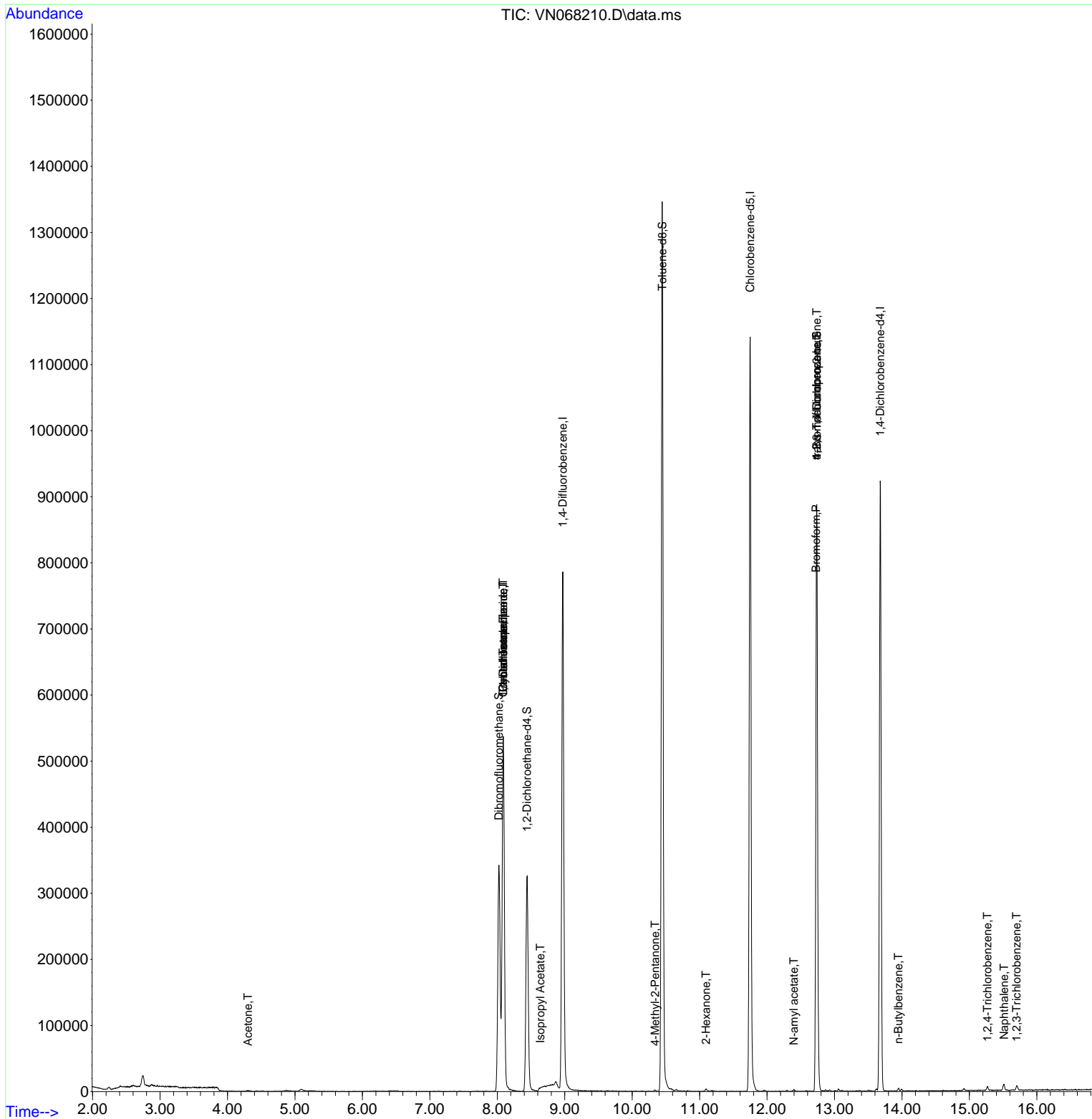
Internal Standards						
1) Pentafluorobenzene	8.088	168	446785	50.000	ug/l	# 0.00
34) 1,4-Difluorobenzene	8.971	114	746295	50.000	ug/l	0.00
63) Chlorobenzene-d5	11.749	117	739891	50.000	ug/l	# 0.00
72) 1,4-Dichlorobenzene-d4	13.678	152	276994	50.000	ug/l	0.00
System Monitoring Compounds						
33) 1,2-Dichloroethane-d4	8.440	65	278825	58.448	ug/l	0.00
Spiked Amount	50.000	Range 61 - 141	Recovery	=	116.900%	
35) Dibromofluoromethane	8.024	113	254956	54.415	ug/l	0.00
Spiked Amount	50.000	Range 69 - 133	Recovery	=	108.820%	
50) Toluene-d8	10.446	98	986094	55.234	ug/l	0.00
Spiked Amount	50.000	Range 65 - 126	Recovery	=	110.460%	
62) 4-Bromofluorobenzene	12.736	95	303167	51.010	ug/l	0.00
Spiked Amount	50.000	Range 58 - 135	Recovery	=	102.020%	
Target Compounds						
						Qvalue
5) Bromomethane	2.810	94	203	Below Cal	#	4
6) Chloroethane	3.172	64	50	Below Cal	#	44
13) Acrolein	4.044	56	101	Below Cal	#	14
16) Acetone	4.301	43	1906	1.368	ug/l	95
18) Methyl Acetate	4.856	43	1124	Below Cal	#	54
20) Methylene Chloride	5.098	84	2317	Below Cal	#	64
31) Cyclohexane	8.088	56	7814	1.244	ug/l	# 9
36) 1,1-Dichloropropene	8.086	75	30159	4.944	ug/l	# 52
38) Carbon Tetrachloride	8.086	117	42215	6.000	ug/l	# 17
43) Isopropyl Acetate	8.638	43	3276	0.394	ug/l	# 58
51) 4-Methyl-2-Pentanone	10.341	43	1709	0.334	ug/l	# 81
59) 2-Hexanone	11.095	43	2629	0.740	ug/l	93
71) Bromoform	12.728	173	1125	0.245	ug/l	# 1
74) N-amyl acetate	12.396	43	1715	0.334	ug/l	# 82
76) 1,2,3-Trichloropropane	12.736	75	155480	33.771	ug/l	# 100
81) trans-1,4-Dichloro-2-b...	12.736	75	155480	110.640	ug/l	# 6
89) n-Butylbenzene	13.946	91	2565	0.224	ug/l	90
93) 1,2,4-Trichlorobenzene	15.268	180	2260	3.148	ug/l	90
95) Naphthalene	15.515	128	9725	4.179	ug/l	# 94
96) 1,2,3-Trichlorobenzene	15.700	180	2824	3.439	ug/l	93

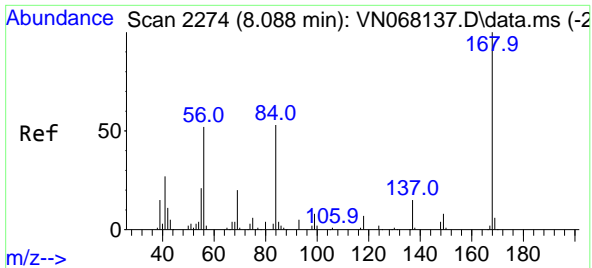
(#) = qualifier out of range (m) = manual integration (+) = signals summed

Data Path : Z:\voasrv\HPCHEM1\MSVOA_N\Data\VN081921\
 Data File : VN068210.D
 Acq On : 19 Aug 2021 12:15
 Operator : JC/MD
 Sample : VN0819WBL01
 Misc : 5.00mL/MSVOA_N/WATER
 ALS Vial : 4 Sample Multiplier: 1

Instrument :
 MSVOA_N
 Client Sampled :
 VN0819WBL01

Quant Time: Aug 19 13:03:41 2021
 Quant Method : Z:\voasrv\HPCHEM1\MSVOA_N\methods\82N081721W.M
 Quant Title : SW846 8260
 QLast Update : Tue Aug 17 13:09:49 2021
 Response via : Initial Calibration

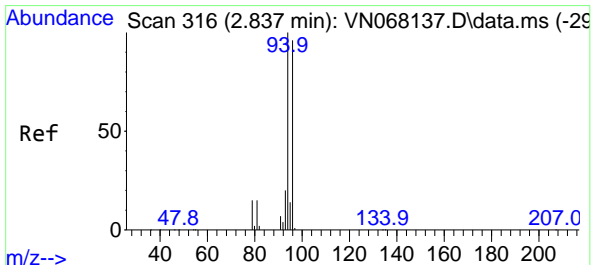
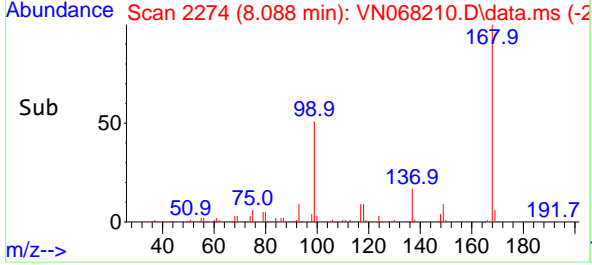
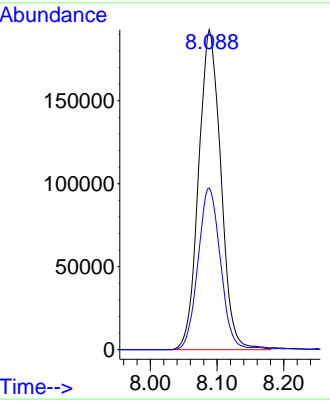
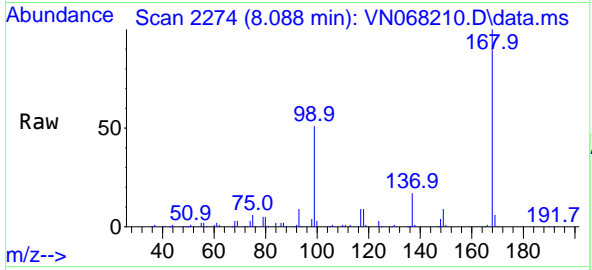




#1
 Pentafluorobenzene
 Concen: 50.000 ug/l
 RT: 8.088 min Scan# 2274
 Delta R.T. 0.000 min
 Lab File: VN068210.D
 Acq: 19 Aug 2021 12:15

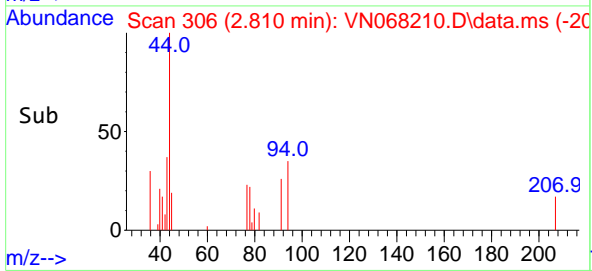
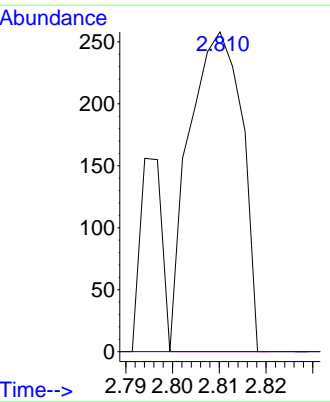
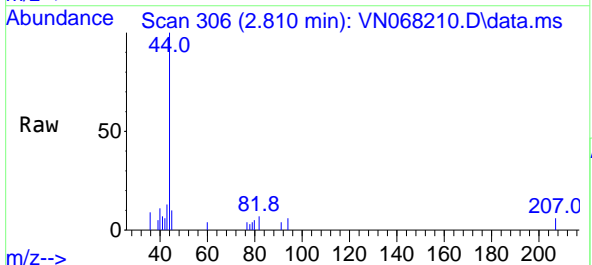
Instrument :
 MSVOA_N
 ClientSampled :
 VN0819WBL01

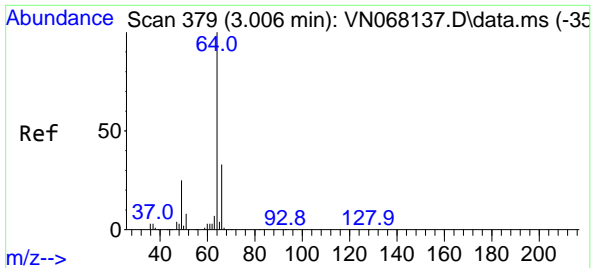
Tgt Ion:168 Resp: 446785
 Ion Ratio Lower Upper
 168 100
 99 50.5 62.9 94.3#



#5
 Bromomethane
 Concen: Below Cal
 RT: 2.810 min Scan# 306
 Delta R.T. -0.027 min
 Lab File: VN068210.D
 Acq: 19 Aug 2021 12:15

Tgt Ion: 94 Resp: 203
 Ion Ratio Lower Upper
 94 100
 96 0.0 73.7 110.5#

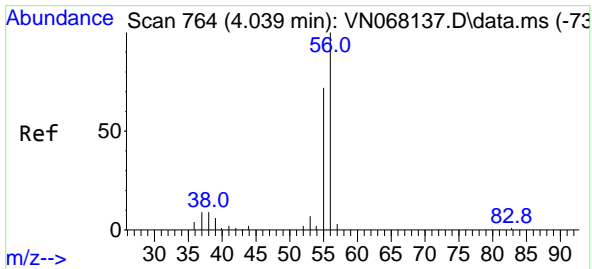
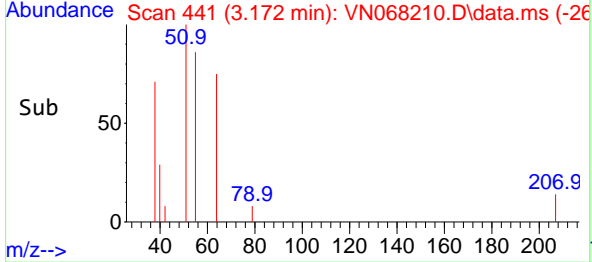
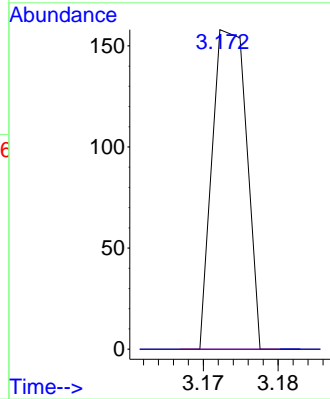
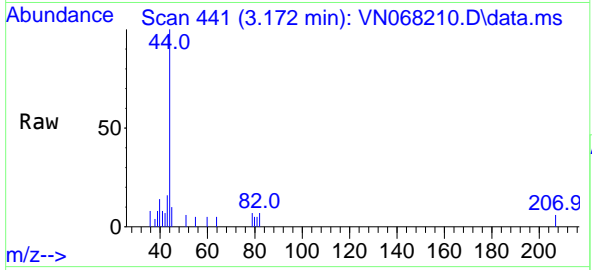




#6
 Chloroethane
 Concen: Below Cal
 RT: 3.172 min Scan# 441
 Delta R.T. 0.166 min
 Lab File: VN068210.D
 Acq: 19 Aug 2021 12:15

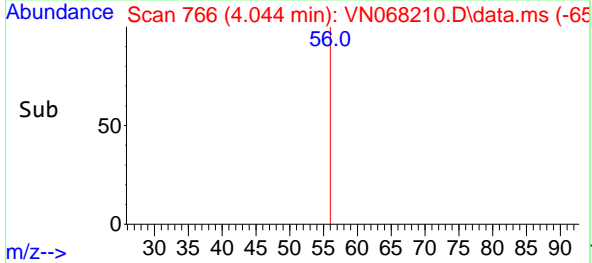
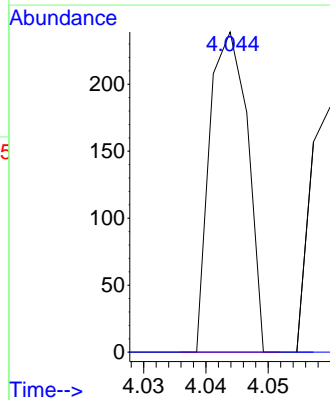
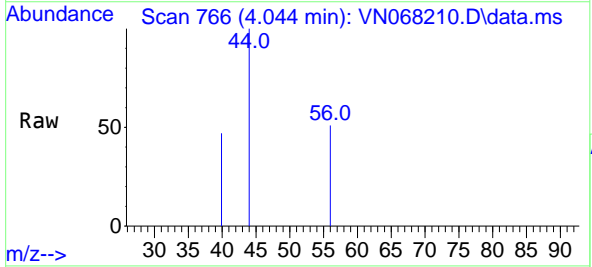
Instrument :
 MSVOA_N
 ClientSampled :
 VN0819WBL01

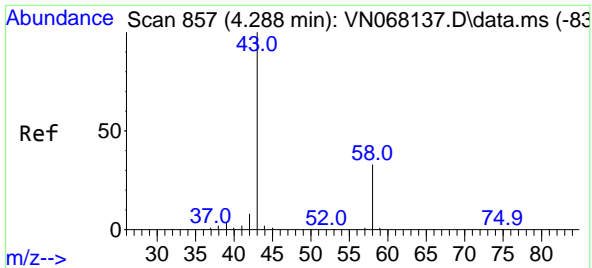
Tgt Ion: 64 Resp: 50
 Ion Ratio Lower Upper
 64 100
 66 0.0 24.7 37.1#



#13
 Acrolein
 Concen: Below Cal
 RT: 4.044 min Scan# 766
 Delta R.T. 0.005 min
 Lab File: VN068210.D
 Acq: 19 Aug 2021 12:15

Tgt Ion: 56 Resp: 101
 Ion Ratio Lower Upper
 56 100
 55 0.0 57.4 86.0#



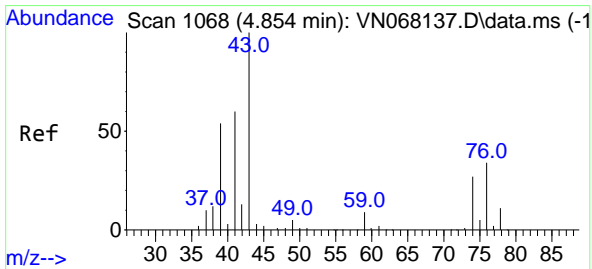
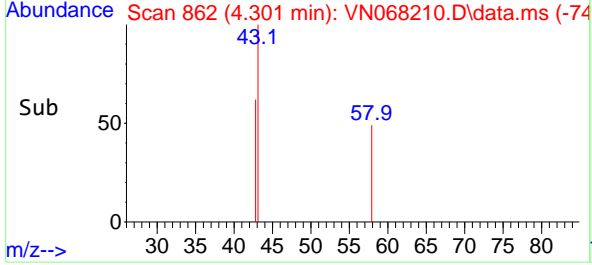
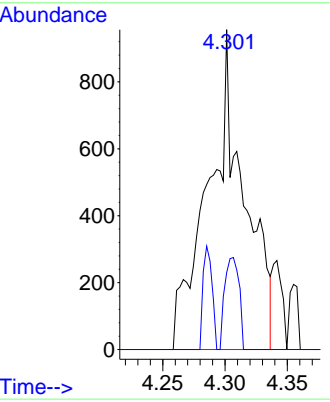
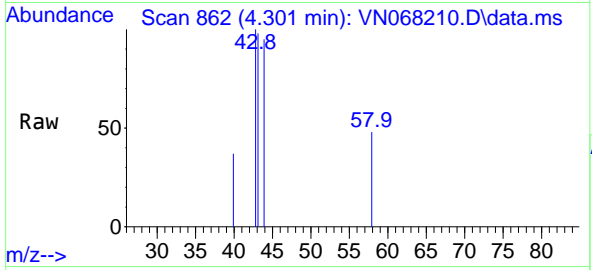


#16
 Acetone
 Concen: 1.368 ug/l
 RT: 4.301 min Scan# 862
 Delta R.T. 0.013 min
 Lab File: VN068210.D
 Acq: 19 Aug 2021 12:15

Instrument :
 MSVOA_N
ClientSampled :
 VN0819WBL01

Tgt Ion: 43 Resp: 1906

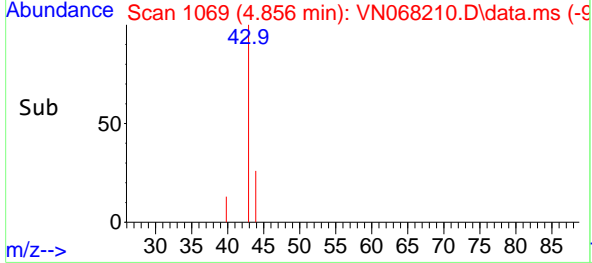
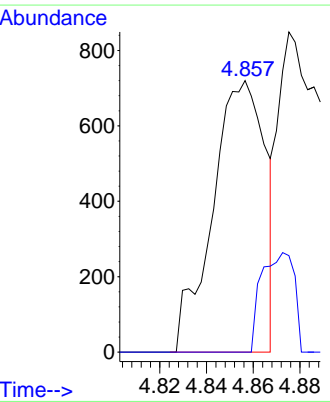
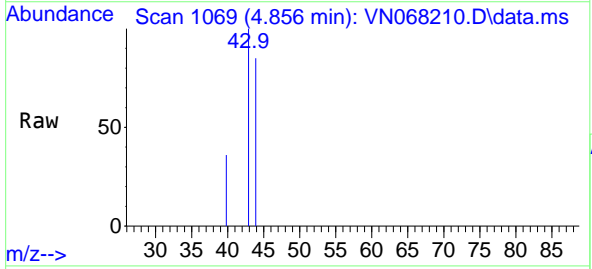
Ion	Ratio	Lower	Upper
43	100		
58	24.1	21.2	31.8

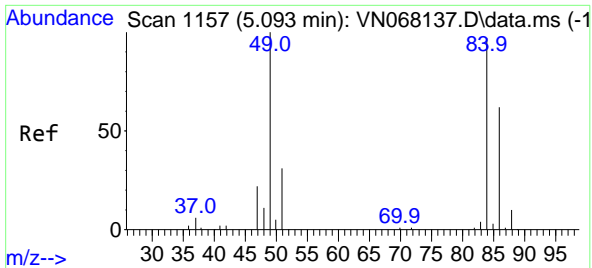


#18
 Methyl Acetate
 Concen: Below Cal
 RT: 4.856 min Scan# 1069
 Delta R.T. 0.002 min
 Lab File: VN068210.D
 Acq: 19 Aug 2021 12:15

Tgt Ion: 43 Resp: 1124

Ion	Ratio	Lower	Upper
43	100		
74	0.0	17.4	26.0#



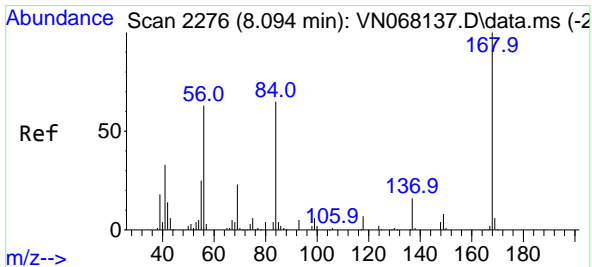
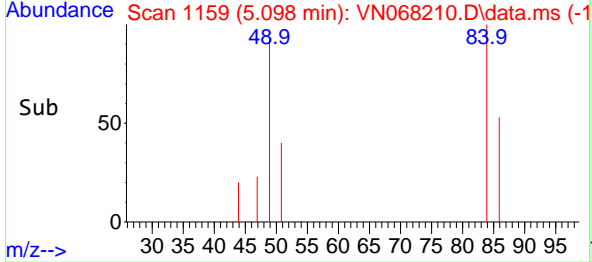
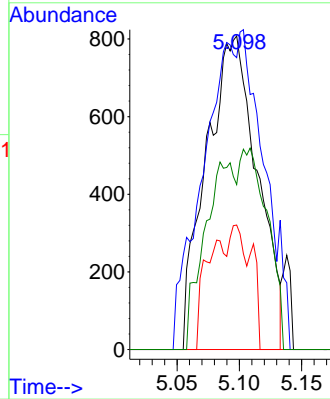
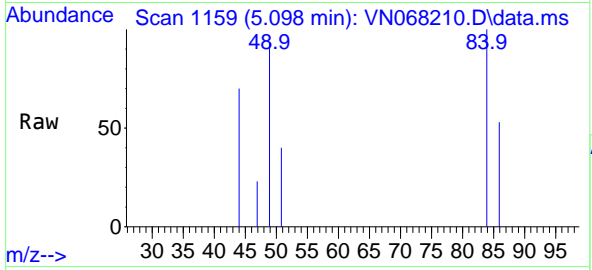


#20
 Methylene Chloride
 Concen: Below Cal
 RT: 5.098 min Scan# 1159
 Delta R.T. 0.005 min
 Lab File: VN068210.D
 Acq: 19 Aug 2021 12:15

Instrument :
 MSVOA_N
 ClientSampleID :
 VN0819WBL01

Tgt Ion: 84 Resp: 2317

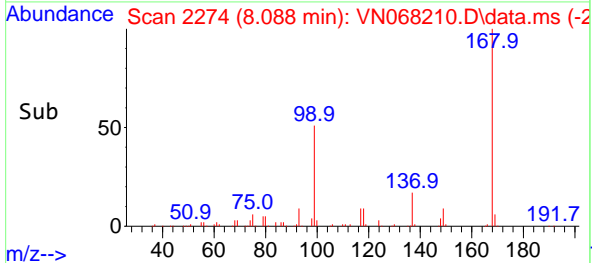
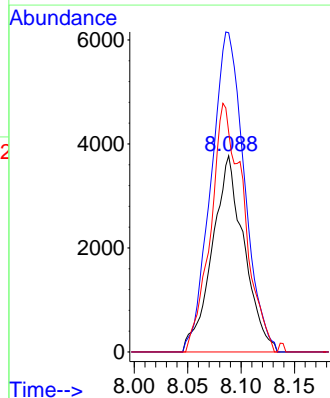
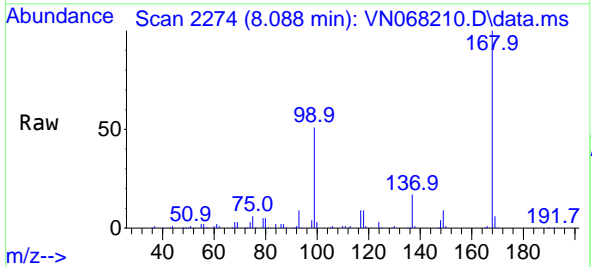
Ion	Ratio	Lower	Upper
84	100		
49	71.0	110.9	166.3#
51	39.7	32.6	49.0
86	52.6	51.6	77.4

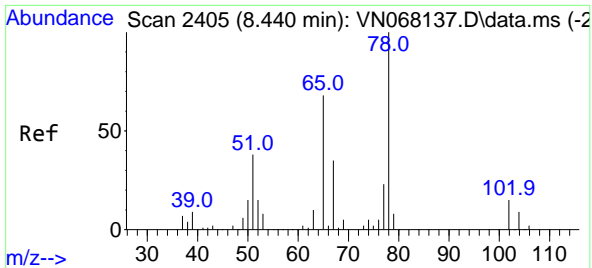


#31
 Cyclohexane
 Concen: 1.244 ug/l
 RT: 8.088 min Scan# 2274
 Delta R.T. -0.006 min
 Lab File: VN068210.D
 Acq: 19 Aug 2021 12:15

Tgt Ion: 56 Resp: 7814

Ion	Ratio	Lower	Upper
56	100		
69	162.7	27.3	40.9#
84	112.1	64.9	97.3#

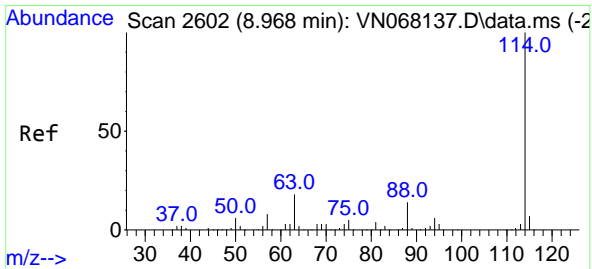
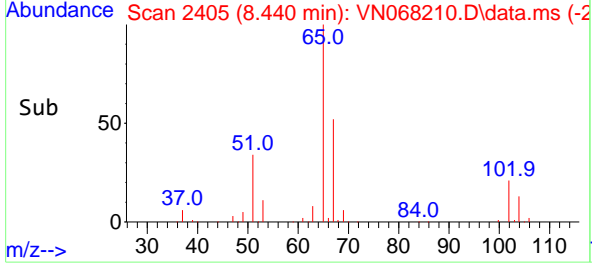
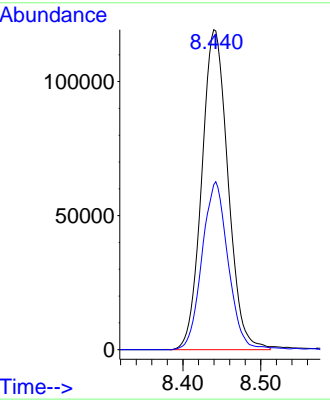
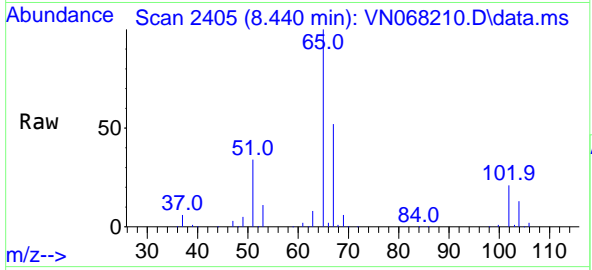




#33
 1,2-Dichloroethane-d4
 Concen: 58.448 ug/l
 RT: 8.440 min Scan# 2405
 Delta R.T. -0.000 min
 Lab File: VN068210.D
 Acq: 19 Aug 2021 12:15

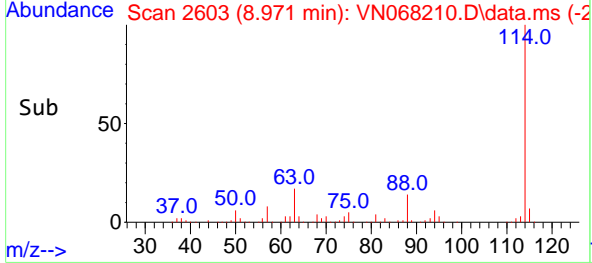
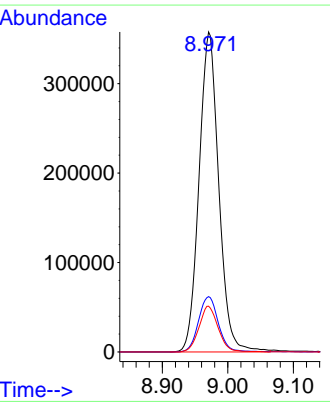
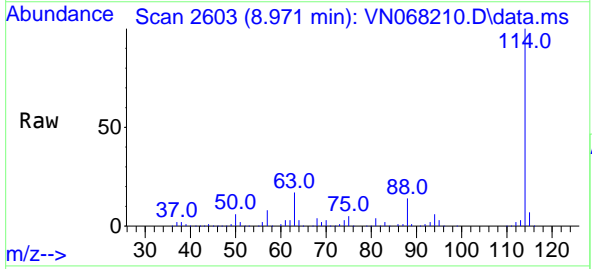
Instrument :
 MSVOA_N
 ClientSampled :
 VN0819WBL01

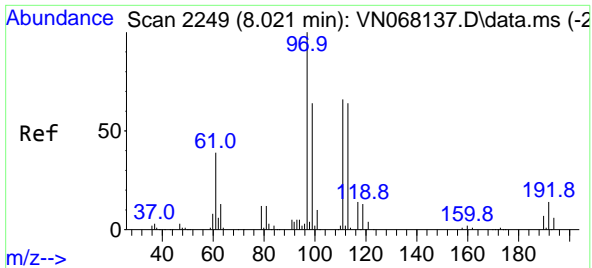
Tgt Ion: 65 Resp: 278825
 Ion Ratio Lower Upper
 65 100
 67 52.3 0.0 98.6



#34
 1,4-Difluorobenzene
 Concen: 50.000 ug/l
 RT: 8.971 min Scan# 2603
 Delta R.T. 0.003 min
 Lab File: VN068210.D
 Acq: 19 Aug 2021 12:15

Tgt Ion:114 Resp: 746295
 Ion Ratio Lower Upper
 114 100
 63 17.3 0.0 49.0
 88 14.3 0.0 36.6



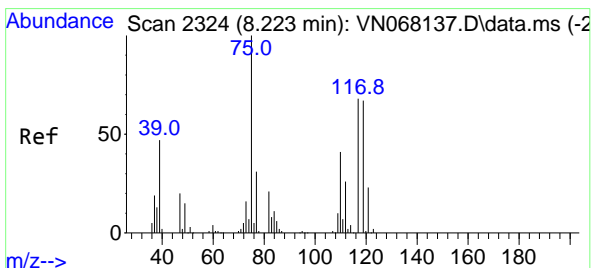
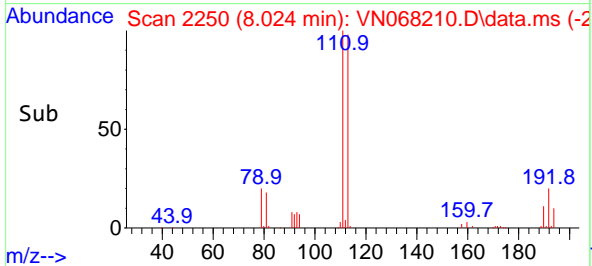
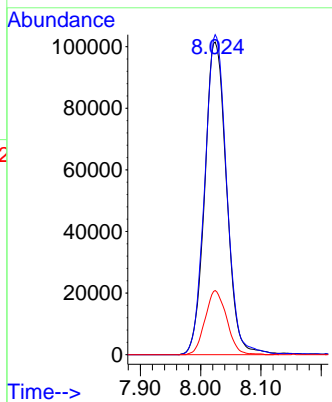
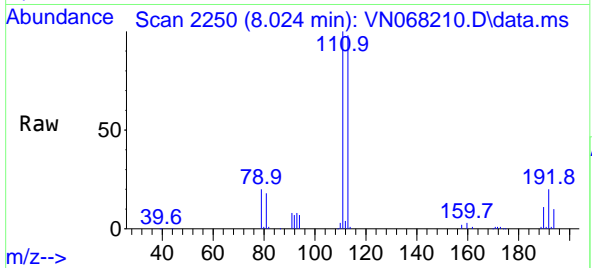


#35
 Dibromofluoromethane
 Concen: 54.415 ug/l
 RT: 8.024 min Scan# 2250
 Delta R.T. 0.003 min
 Lab File: VN068210.D
 Acq: 19 Aug 2021 12:15

Instrument :
 MSVOA_N
ClientSampled :
 VN0819WBL01

Tgt Ion:113 Resp: 254956

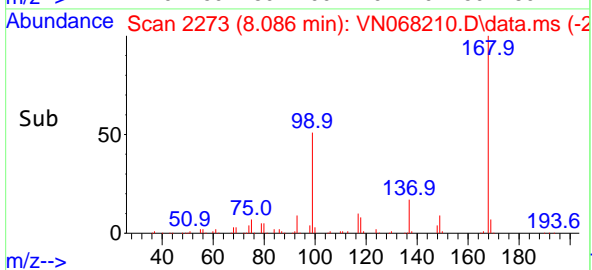
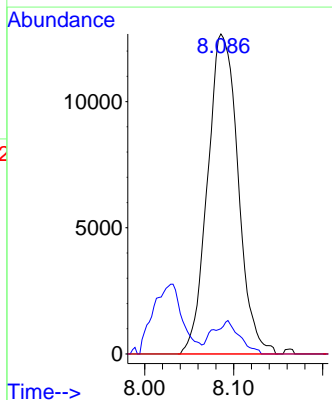
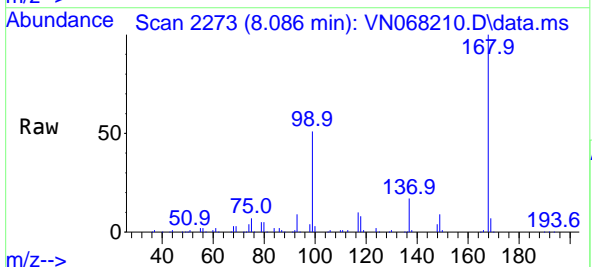
Ion	Ratio	Lower	Upper
113	100		
111	102.7	83.8	125.8
192	20.3	13.4	20.0#

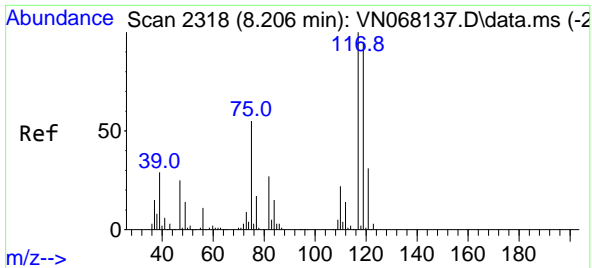


#36
 1,1-Dichloropropene
 Concen: 4.944 ug/l
 RT: 8.086 min Scan# 2273
 Delta R.T. -0.137 min
 Lab File: VN068210.D
 Acq: 19 Aug 2021 12:15

Tgt Ion: 75 Resp: 30159

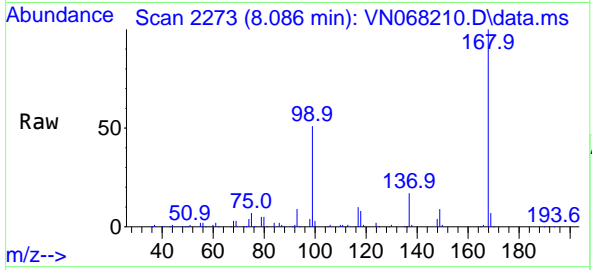
Ion	Ratio	Lower	Upper
75	100		
110	9.2	15.7	47.0#
77	0.0	24.6	37.0#





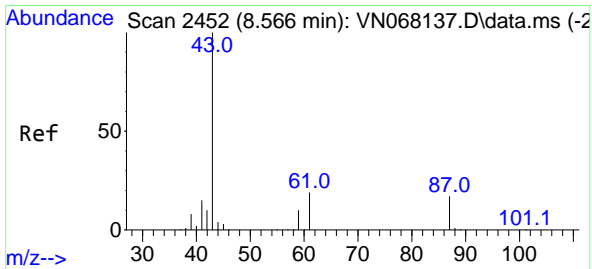
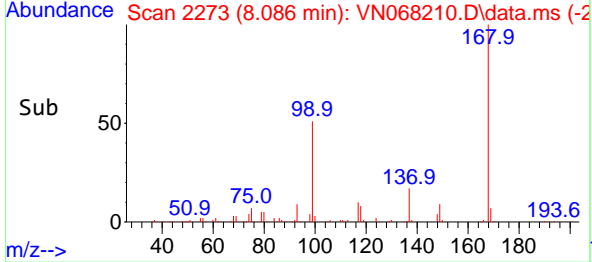
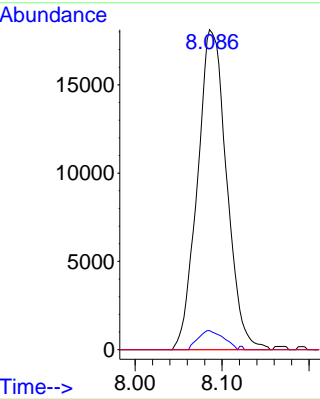
#38
 Carbon Tetrachloride
 Concen: 6.000 ug/l
 RT: 8.086 min Scan# 2273
 Delta R.T. -0.120 min
 Lab File: VN068210.D
 Acq: 19 Aug 2021 12:15

Instrument :
 MSVOA_N
ClientSampled :
 VN0819WBL01

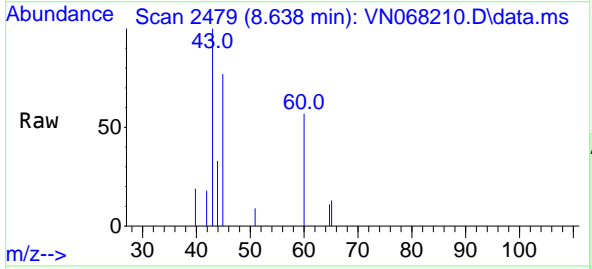


Tgt Ion: 117 Resp: 42215

Ion	Ratio	Lower	Upper
117	100		
119	5.9	75.4	113.2#
121	0.0	23.5	35.3#

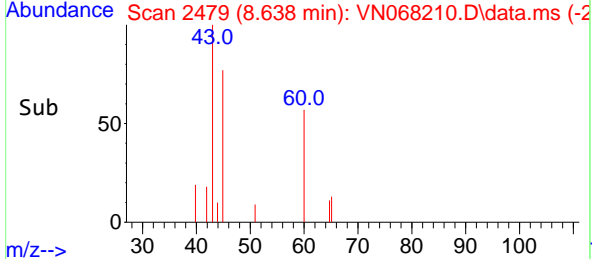
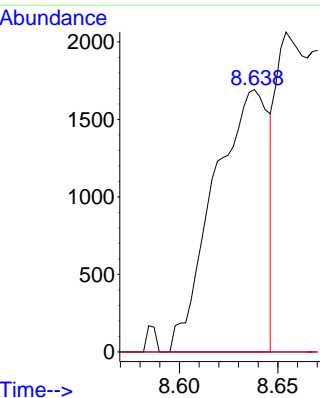


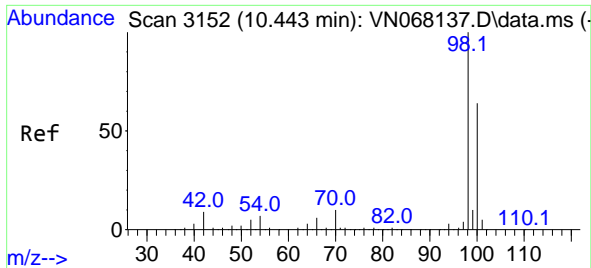
#43
 Isopropyl Acetate
 Concen: 0.394 ug/l
 RT: 8.638 min Scan# 2479
 Delta R.T. 0.072 min
 Lab File: VN068210.D
 Acq: 19 Aug 2021 12:15



Tgt Ion: 43 Resp: 3276

Ion	Ratio	Lower	Upper
43	100		
61	0.0	19.0	28.4#
87	0.0	9.5	14.3#

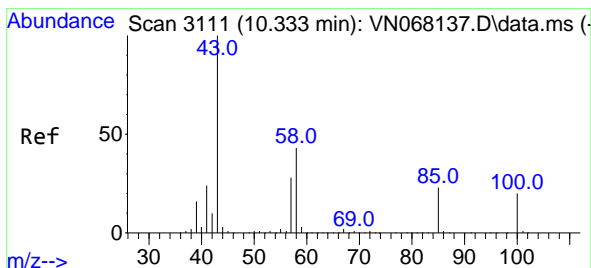
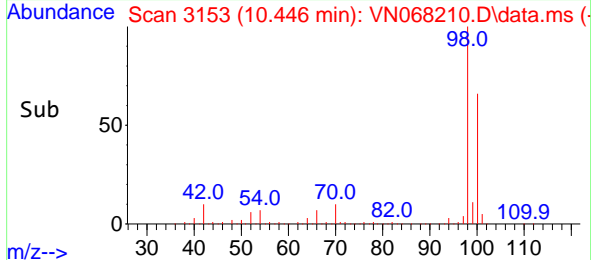
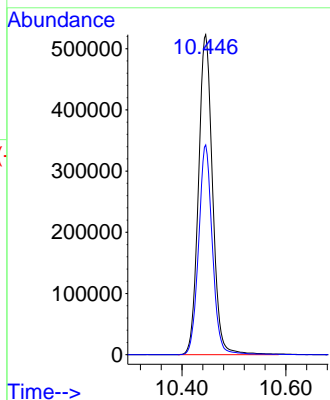
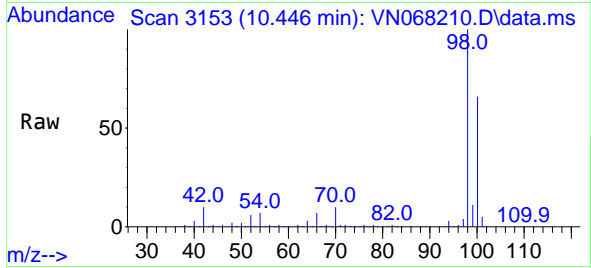




#50
Toluene-d8
Concen: 55.234 ug/l
RT: 10.446 min Scan# 3153
Delta R.T. 0.003 min
Lab File: VN068210.D
Acq: 19 Aug 2021 12:15

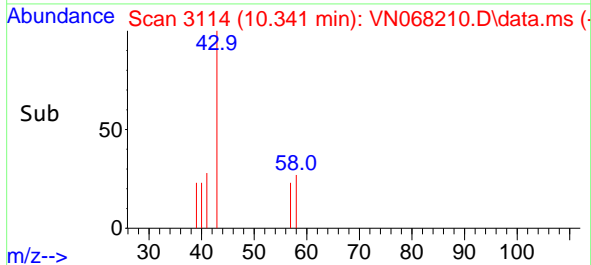
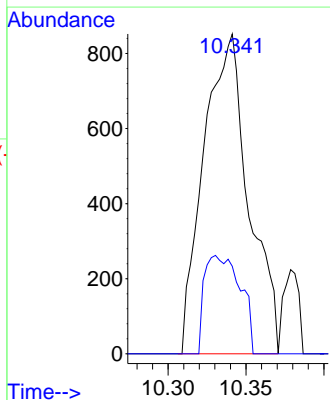
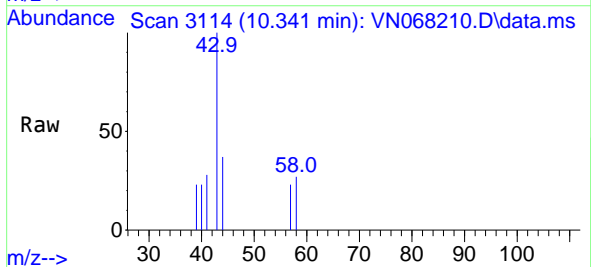
Instrument :
MSVOA_N
ClientSampleId :
VN0819WBL01

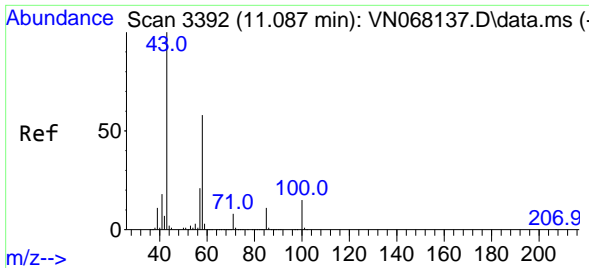
Tgt Ion: 98 Resp: 986094
Ion Ratio Lower Upper
98 100
100 63.7 51.7 77.5



#51
4-Methyl-2-Pentanone
Concen: 0.334 ug/l
RT: 10.341 min Scan# 3114
Delta R.T. 0.008 min
Lab File: VN068210.D
Acq: 19 Aug 2021 12:15

Tgt Ion: 43 Resp: 1709
Ion Ratio Lower Upper
43 100
58 24.5 28.6 43.0#

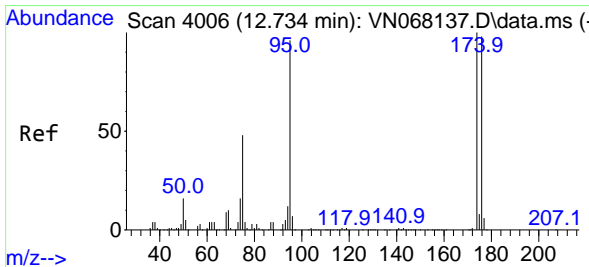
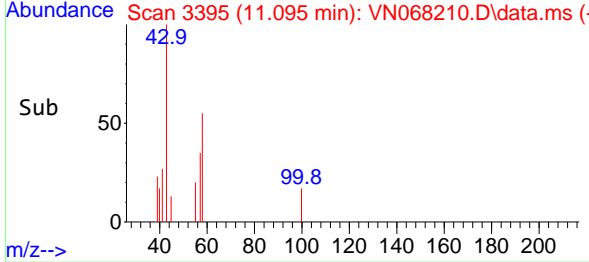
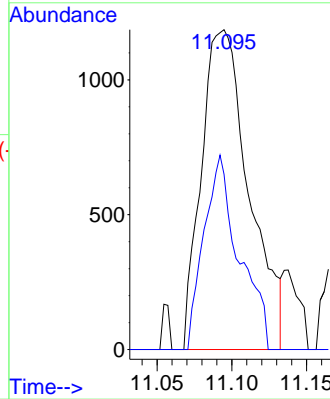
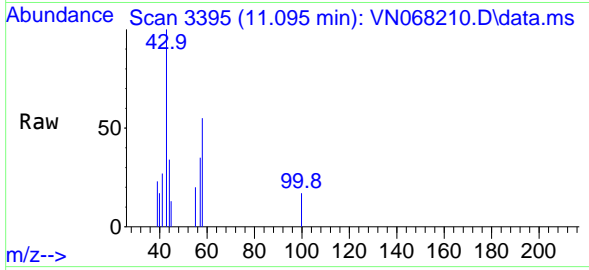




#59
 2-Hexanone
 Concen: 0.740 ug/l
 RT: 11.095 min Scan# 3395
 Delta R.T. 0.008 min
 Lab File: VN068210.D
 Acq: 19 Aug 2021 12:15

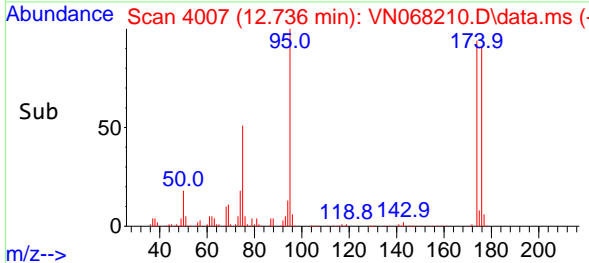
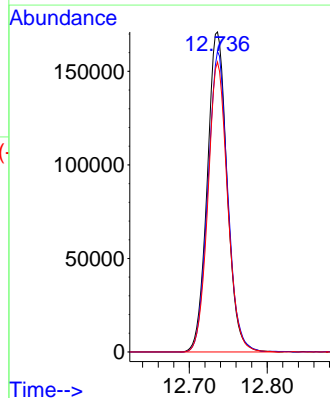
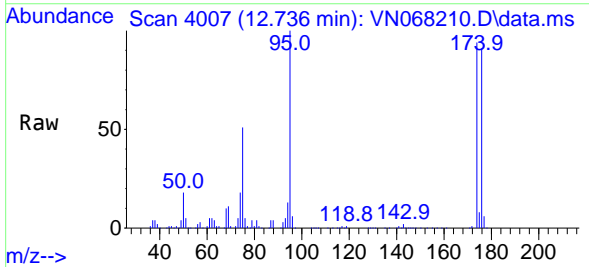
Instrument :
 MSVOA_N
 ClientSampled :
 VN0819WBL01

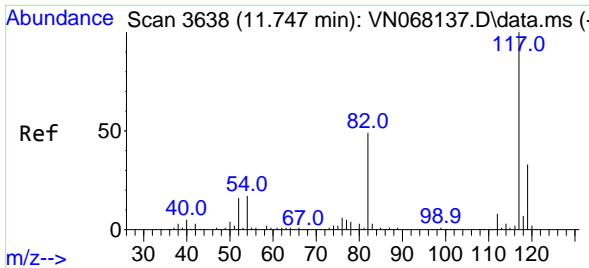
Tgt Ion: 43 Resp: 2629
 Ion Ratio Lower Upper
 43 100
 58 44.8 24.7 74.1



#62
 4-Bromofluorobenzene
 Concen: 51.010 ug/l
 RT: 12.736 min Scan# 4007
 Delta R.T. 0.002 min
 Lab File: VN068210.D
 Acq: 19 Aug 2021 12:15

Tgt Ion: 95 Resp: 303167
 Ion Ratio Lower Upper
 95 100
 174 93.9 0.0 122.0
 176 89.5 0.0 117.6

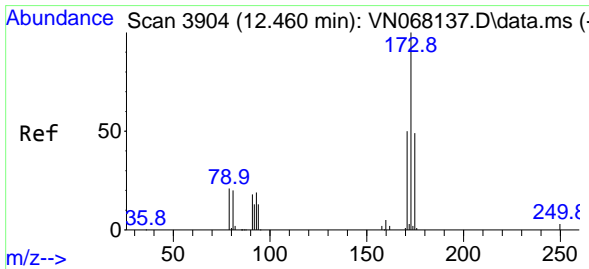
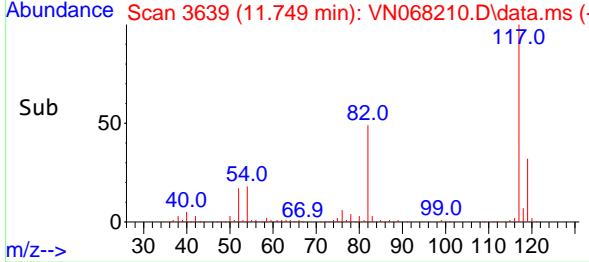
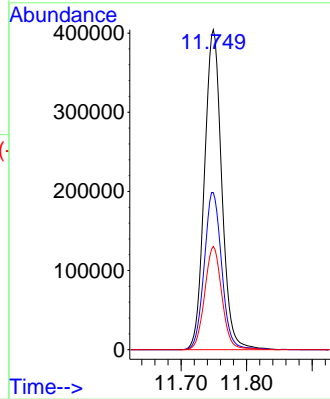
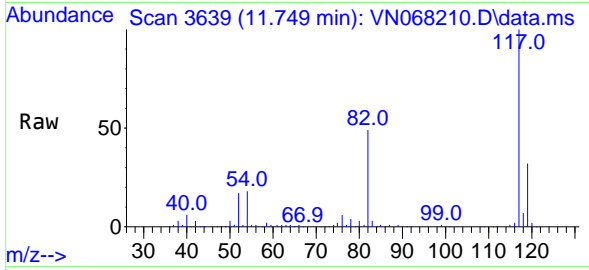




#63
 Chlorobenzene-d5
 Concen: 50.000 ug/l
 RT: 11.749 min Scan# 3639
 Delta R.T. 0.002 min
 Lab File: VN068210.D
 Acq: 19 Aug 2021 12:15

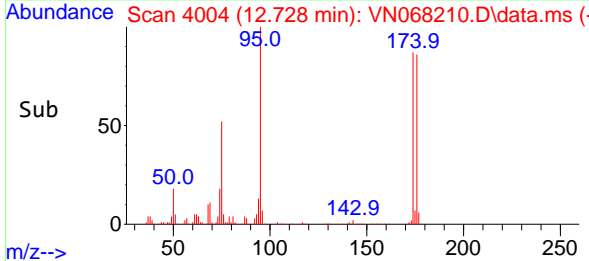
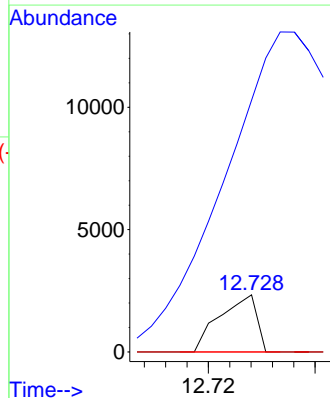
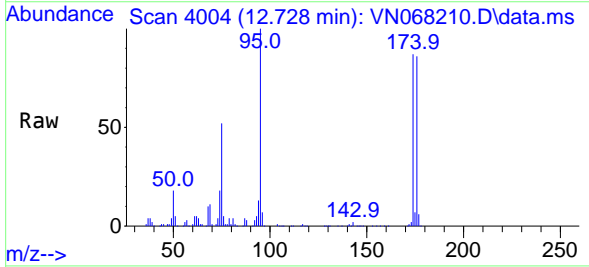
Instrument :
 MSVOA_N
 ClientSampled :
 VN0819WBL01

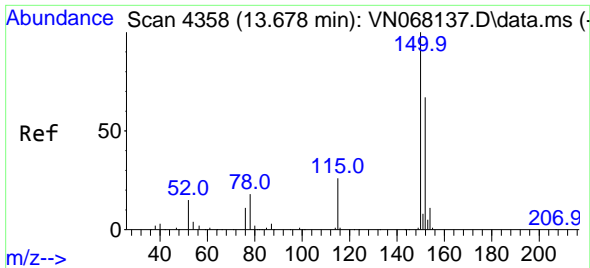
Tgt Ion:117 Resp: 739891
 Ion Ratio Lower Upper
 117 100
 82 49.1 53.1 79.7#
 119 32.3 25.5 38.3



#71
 Bromoform
 Concen: 0.245 ug/l
 RT: 12.728 min Scan# 4004
 Delta R.T. 0.268 min
 Lab File: VN068210.D
 Acq: 19 Aug 2021 12:15

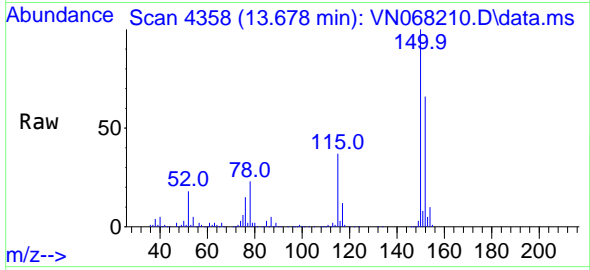
Tgt Ion:173 Resp: 1125
 Ion Ratio Lower Upper
 173 100
 175 1825.0 23.9 71.8#
 254 0.0 0.0 0.0



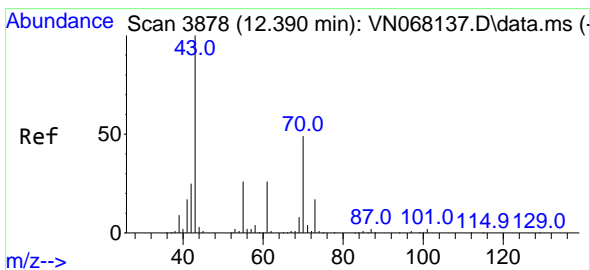
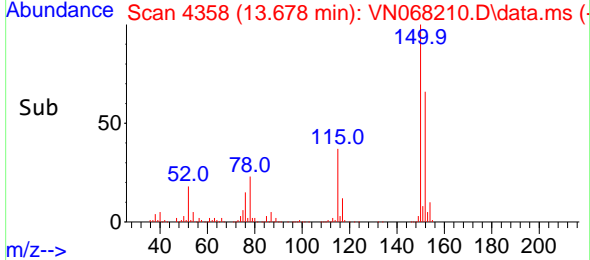
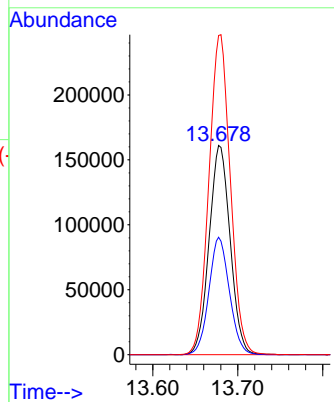


#72
 1,4-Dichlorobenzene-d4
 Concen: 50.000 ug/l
 RT: 13.678 min Scan# 4358
 Delta R.T. -0.001 min
 Lab File: VN068210.D
 Acq: 19 Aug 2021 12:15

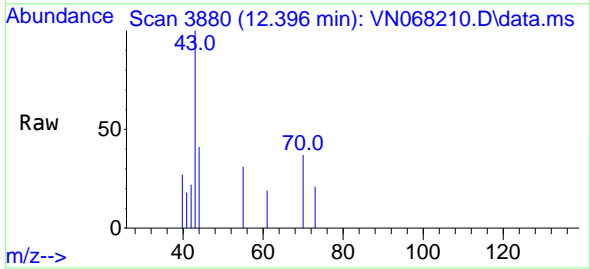
Instrument :
 MSVOA_N
 ClientSampled :
 VN0819WBL01



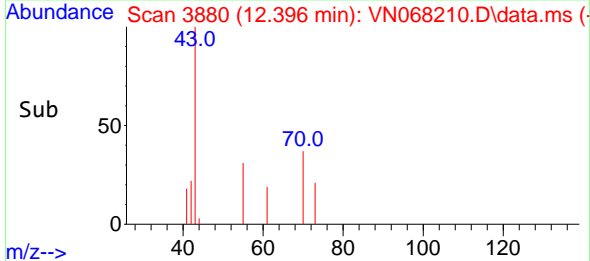
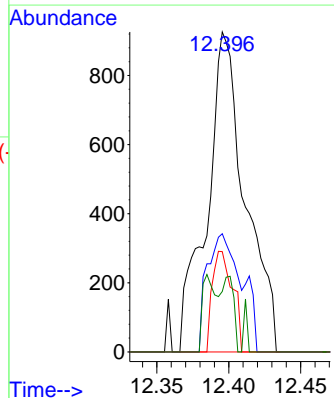
Tgt Ion:152 Resp: 276994
 Ion Ratio Lower Upper
 152 100
 115 54.7 36.1 108.5
 150 155.4 0.0 351.8

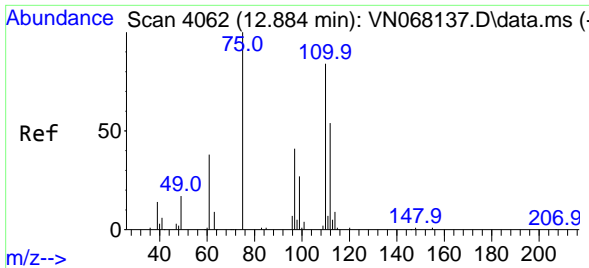


#74
 N-amy1 acetate
 Concen: 0.334 ug/l
 RT: 12.396 min Scan# 3880
 Delta R.T. 0.006 min
 Lab File: VN068210.D
 Acq: 19 Aug 2021 12:15



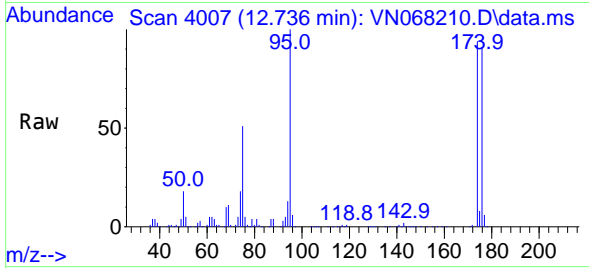
Tgt Ion: 43 Resp: 1715
 Ion Ratio Lower Upper
 43 100
 70 27.7 29.4 44.2#
 55 16.6 17.0 25.4#
 61 7.2 17.6 26.4#



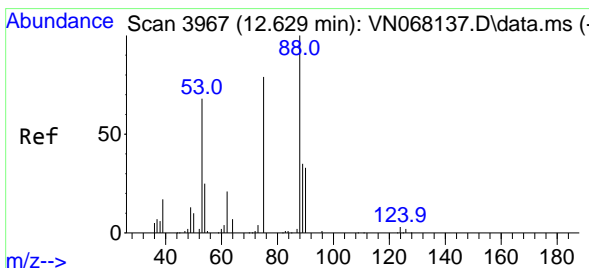
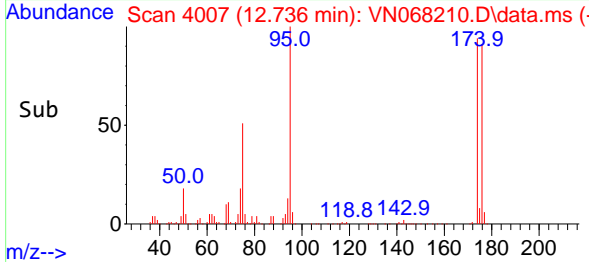
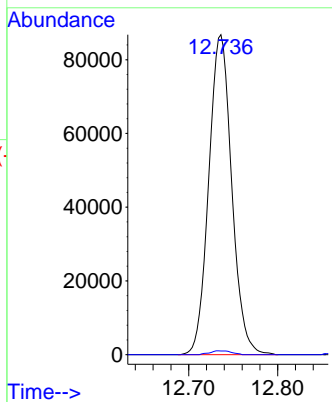


#76
 1,2,3-Trichloropropane
 Concen: 33.771 ug/l
 RT: 12.736 min Scan# 4007
 Delta R.T. -0.148 min
 Lab File: VN068210.D
 Acq: 19 Aug 2021 12:15

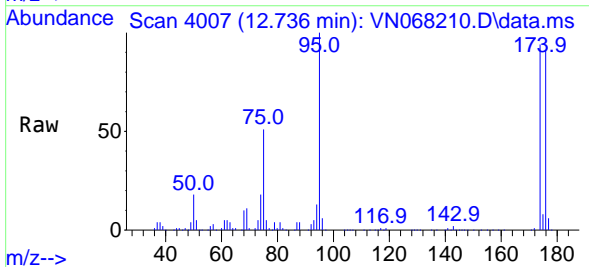
Instrument :
 MSVOA_N
 ClientSampled :
 VN0819WBL01



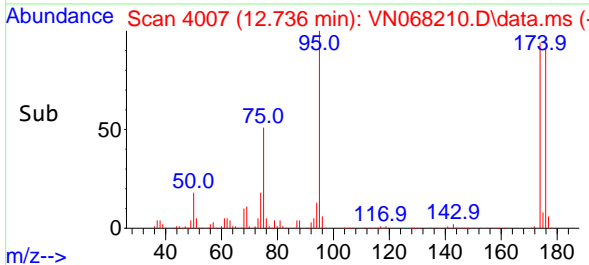
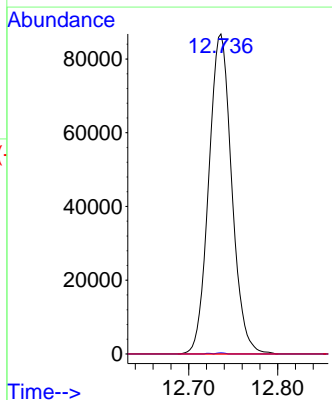
Tgt Ion: 75 Resp: 155480
 Ion Ratio Lower Upper
 75 100
 77 1.1 0.0 0.0#

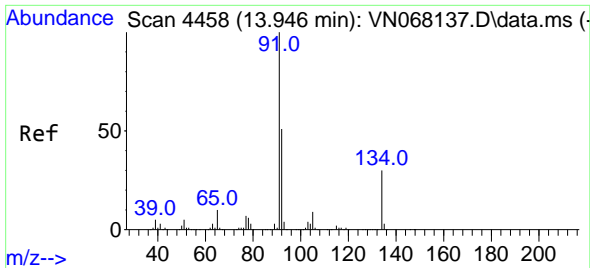


#81
 trans-1,4-Dichloro-2-butene
 Concen: 110.640 ug/l
 RT: 12.736 min Scan# 4007
 Delta R.T. 0.107 min
 Lab File: VN068210.D
 Acq: 19 Aug 2021 12:15



Tgt Ion: 75 Resp: 155480
 Ion Ratio Lower Upper
 75 100
 53 0.1 87.6 131.4#
 89 0.0 37.8 56.8#



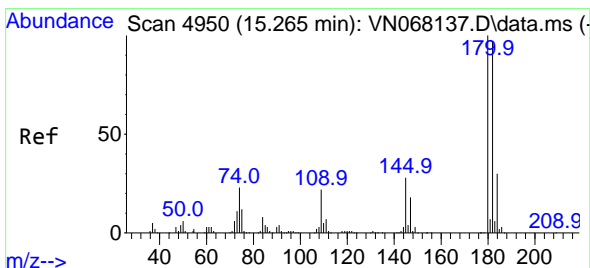
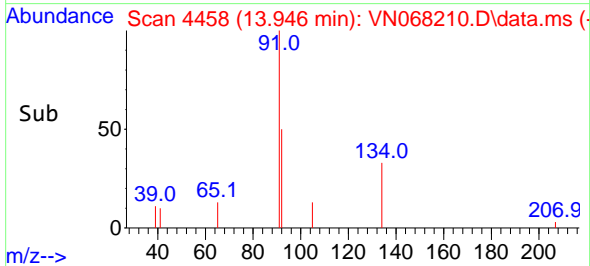
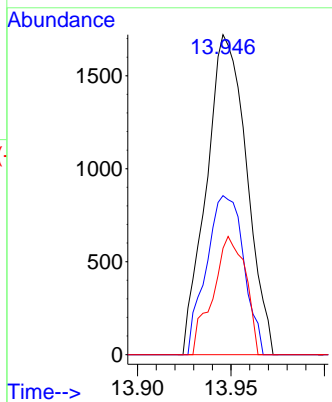
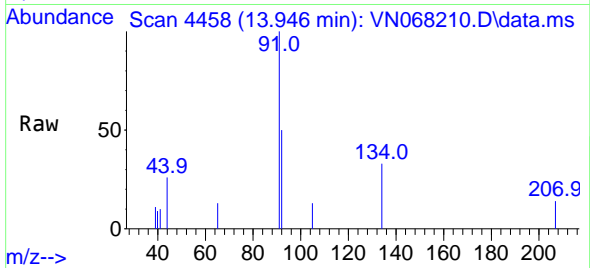


#89
 n-Butylbenzene
 Concen: 0.224 ug/l
 RT: 13.946 min Scan# 4458
 Delta R.T. -0.000 min
 Lab File: VN068210.D
 Acq: 19 Aug 2021 12:15

Instrument :
 MSVOA_N
 ClientSampled :
 VN0819WBL01

Tgt Ion: 91 Resp: 2565

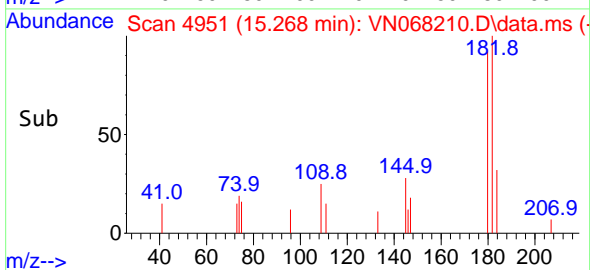
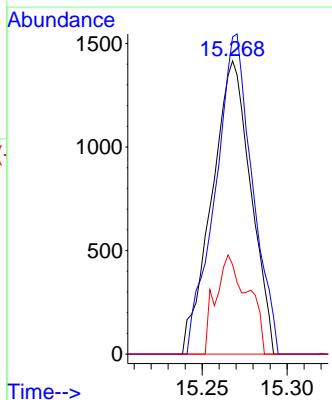
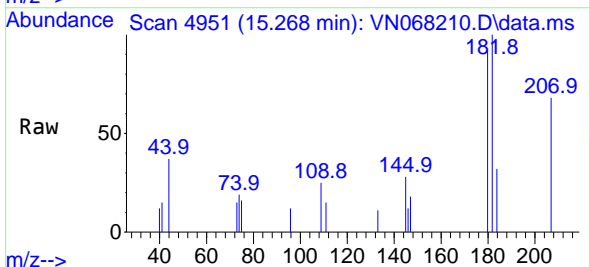
Ion	Ratio	Lower	Upper
91	100		
92	46.5	25.7	77.1
134	30.1	11.2	33.6

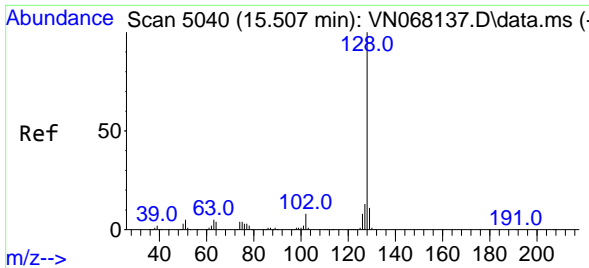


#93
 1,2,4-Trichlorobenzene
 Concen: 3.148 ug/l
 RT: 15.268 min Scan# 4951
 Delta R.T. 0.003 min
 Lab File: VN068210.D
 Acq: 19 Aug 2021 12:15

Tgt Ion: 180 Resp: 2260

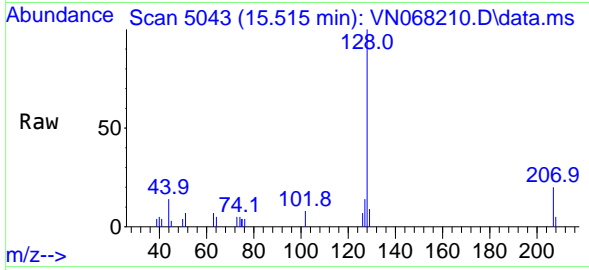
Ion	Ratio	Lower	Upper
180	100		
182	103.8	47.5	142.5
145	27.8	17.2	51.6





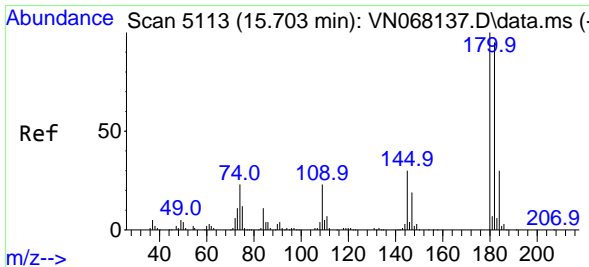
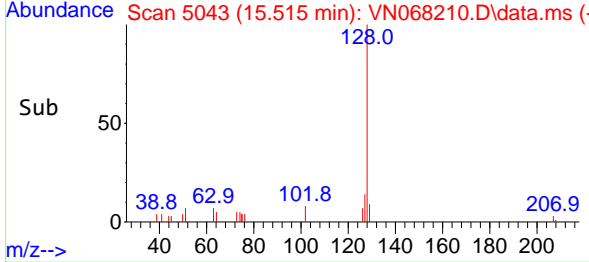
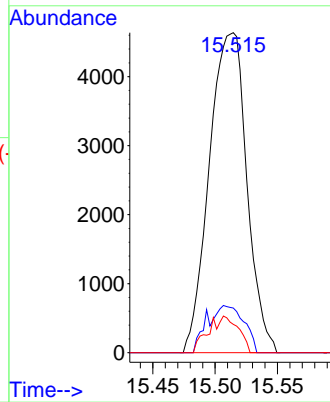
#95
 Naphthalene
 Concen: 4.179 ug/l
 RT: 15.515 min Scan# 5043
 Delta R.T. 0.008 min
 Lab File: VN068210.D
 Acq: 19 Aug 2021 12:15

Instrument :
 MSVOA_N
 ClientSampled :
 VN0819WBL01

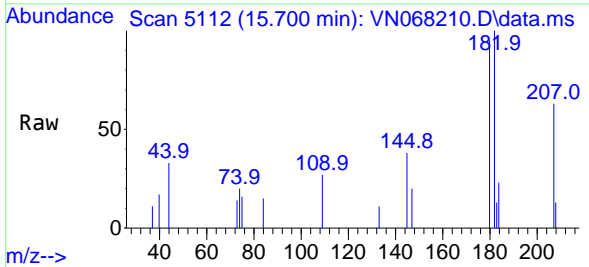


Tgt Ion:128 Resp: 9725

Ion	Ratio	Lower	Upper
128	100		
127	10.5	10.6	15.8#
129	9.1	8.6	12.8



#96
 1,2,3-Trichlorobenzene
 Concen: 3.439 ug/l
 RT: 15.700 min Scan# 5112
 Delta R.T. -0.003 min
 Lab File: VN068210.D
 Acq: 19 Aug 2021 12:15



Tgt Ion:180 Resp: 2824

Ion	Ratio	Lower	Upper
180	100		
182	101.8	47.8	143.3
145	30.5	18.2	54.6

