

Data Path : Z:\voasrv\HPCHEM1\MSVOA_N\Data\VN081922\
 Data File : VN074035.D
 Acq On : 19 Aug 2022 18:41
 Operator : JC\MD
 Sample : PB147119ZHE#06
 Misc : 5.0mL/MSVOA_N/WATER
 ALS Vial : 19 Sample Multiplier: 1

Instrument :
 MSVOA_N
 ClientSampleId :
 PB147119ZHE#06

Quant Time: Aug 20 03:07:22 2022
 Quant Method : Z:\voasrv\HPCHEM1\MSVOA_N\methods\82N081522W.M
 Quant Title : SW846 8260
 QLast Update : Tue Aug 16 00:45:21 2022
 Response via : Initial Calibration

Compound	R.T.	QIon	Response	Conc	Units	Dev(Min)

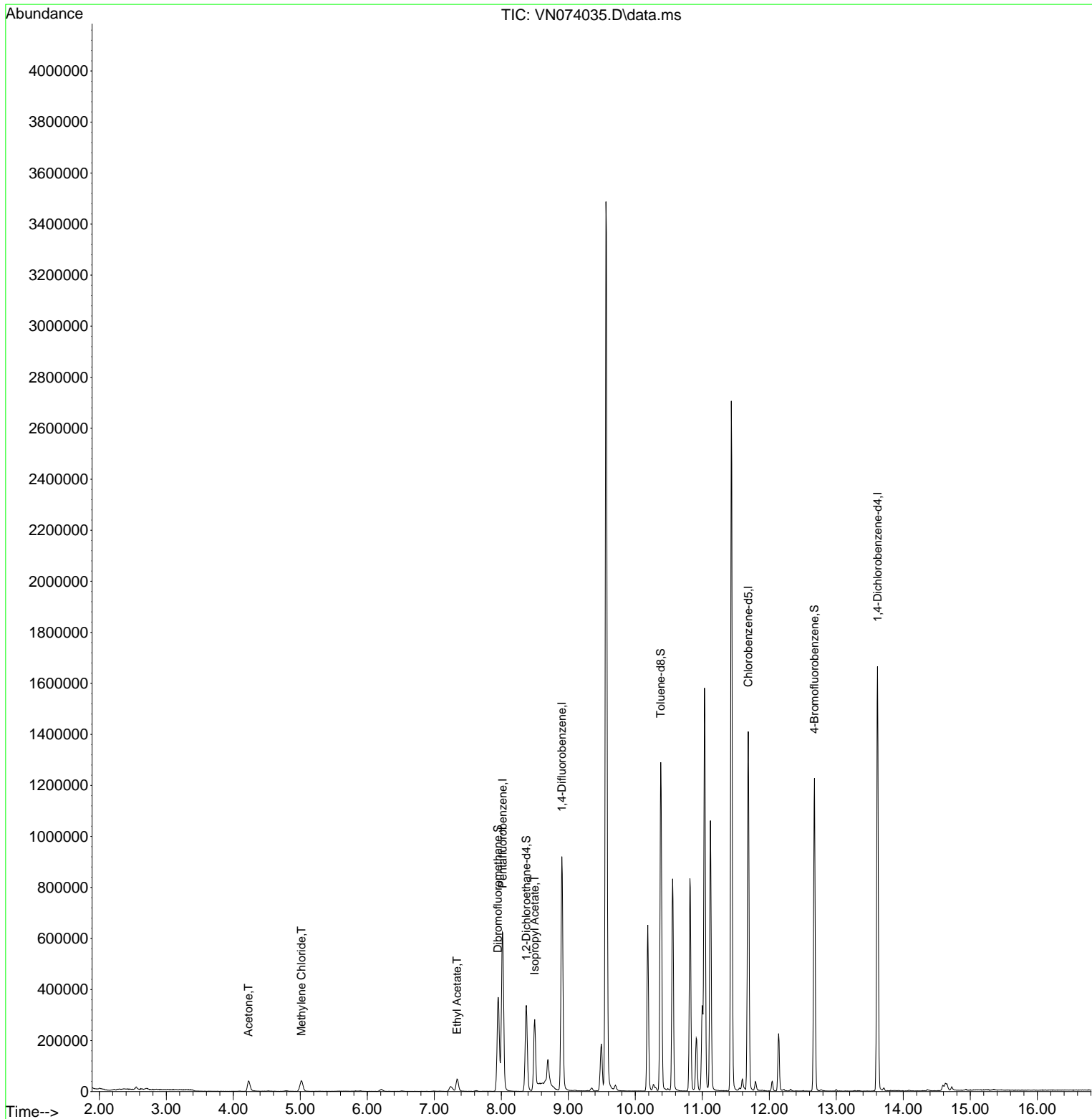
Internal Standards						
1) Pentafluorobenzene	8.022	168	529998	50.000	ug/l	0.00
34) 1,4-Difluorobenzene	8.904	114	857183	50.000	ug/l	0.00
63) Chlorobenzene-d5	11.686	117	864428	50.000	ug/l	0.00
72) 1,4-Dichlorobenzene-d4	13.615	152	485699	50.000	ug/l	0.00
System Monitoring Compounds						
33) 1,2-Dichloroethane-d4	8.375	65	284432	55.099	ug/l	0.00
Spiked Amount	50.000	Range	74 - 125	Recovery	=	110.200%
35) Dibromofluoromethane	7.951	113	273576	53.967	ug/l	0.00
Spiked Amount	50.000	Range	75 - 124	Recovery	=	107.940%
50) Toluene-d8	10.380	98	923900	47.059	ug/l	0.00
Spiked Amount	50.000	Range	86 - 113	Recovery	=	94.120%
62) 4-Bromofluorobenzene	12.674	95	407373	62.521	ug/l	0.00
Spiked Amount	50.000	Range	83 - 123	Recovery	=	125.040%#
Target Compounds						
						Qvalue
16) Acetone	4.228	43	75958	31.189	ug/l	98
20) Methylene Chloride	5.016	84	36689	7.139	ug/l	98
37) Ethyl Acetate	7.339	43	75008	8.793	ug/l	97
43) Isopropyl Acetate	8.498	43	326772	26.890	ug/l #	91

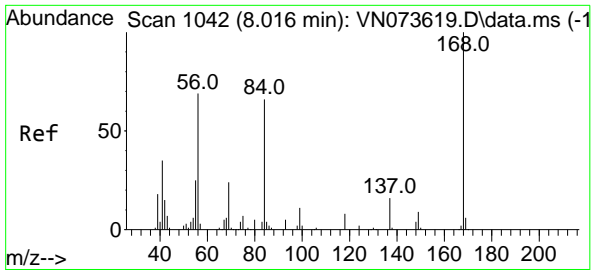
(#) = qualifier out of range (m) = manual integration (+) = signals summed

Data Path : Z:\voasrv\HPCHEM1\MSVOA_N\Data\VN081922\
 Data File : VN074035.D
 Acq On : 19 Aug 2022 18:41
 Operator : JC\MD
 Sample : PB147119ZHE#06
 Misc : 5.0mL/MSVOA_N/WATER
 ALS Vial : 19 Sample Multiplier: 1

Instrument :
 MSVOA_N
 ClientSampleId :
 PB147119ZHE#06

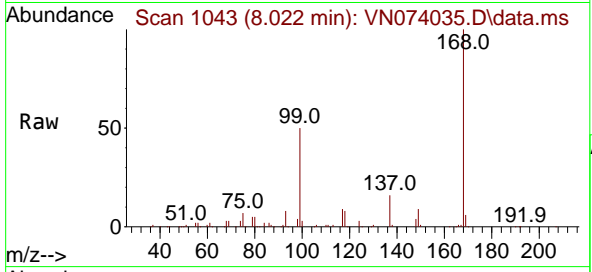
Quant Time: Aug 20 03:07:22 2022
 Quant Method : Z:\voasrv\HPCHEM1\MSVOA_N\methods\82N081522W.M
 Quant Title : SW846 8260
 QLast Update : Tue Aug 16 00:45:21 2022
 Response via : Initial Calibration



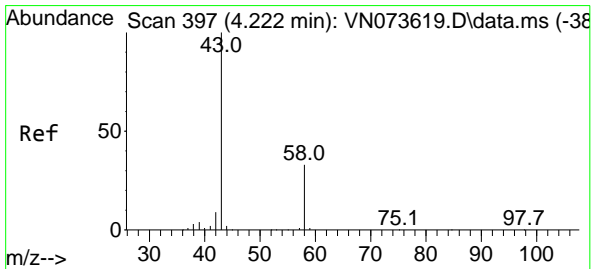
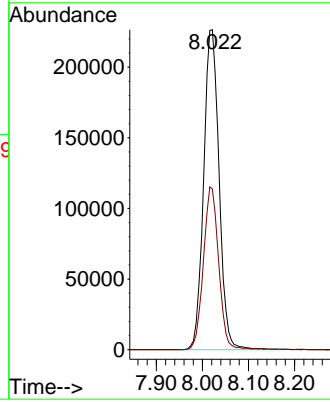
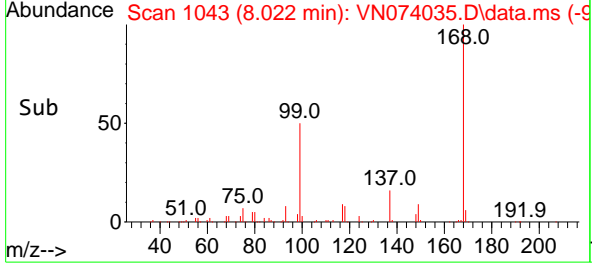


#1
 Pentafluorobenzene
 Concen: 50.000 ug/l
 RT: 8.022 min Scan# 1043
 Delta R.T. 0.006 min
 Lab File: VN074035.D
 Acq: 19 Aug 2022 18:41

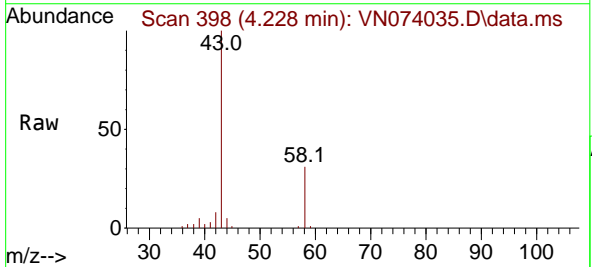
Instrument : MSVOA_N
 ClientSampleId : PB147119ZHE#06



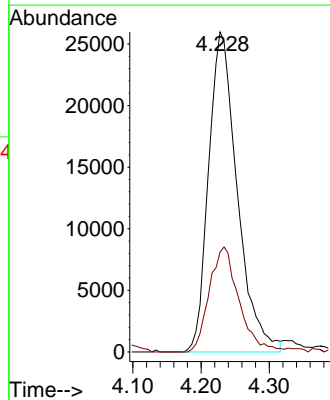
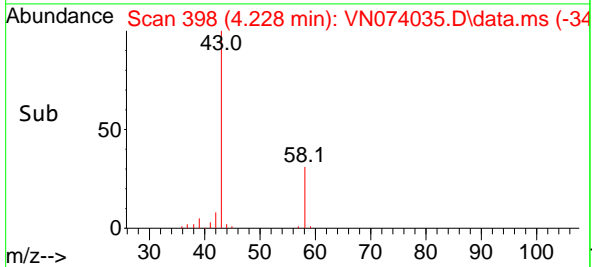
Tgt Ion:168 Resp: 529998
 Ion Ratio Lower Upper
 168 100
 99 50.2 42.3 63.5

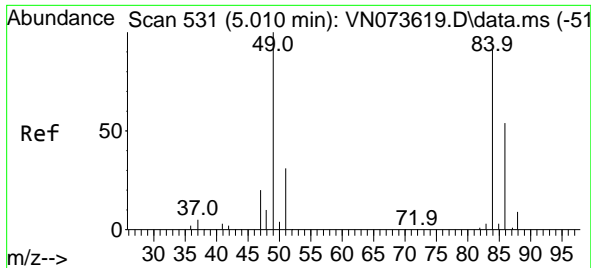


#16
 Acetone
 Concen: 31.189 ug/l
 RT: 4.228 min Scan# 398
 Delta R.T. 0.006 min
 Lab File: VN074035.D
 Acq: 19 Aug 2022 18:41



Tgt Ion: 43 Resp: 75958
 Ion Ratio Lower Upper
 43 100
 58 31.2 26.0 39.0

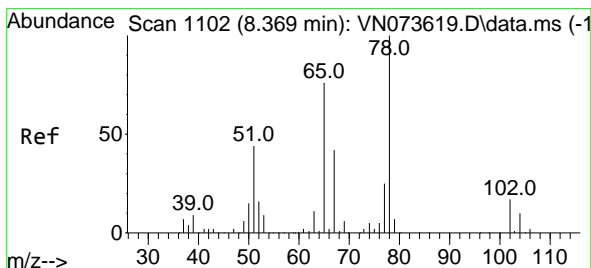
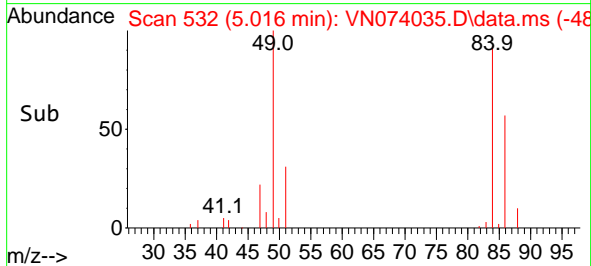
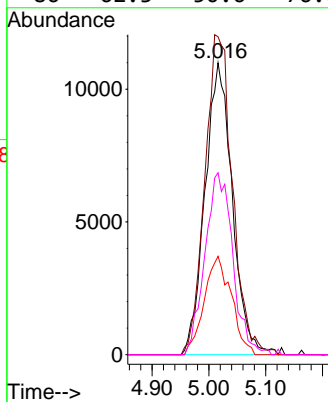
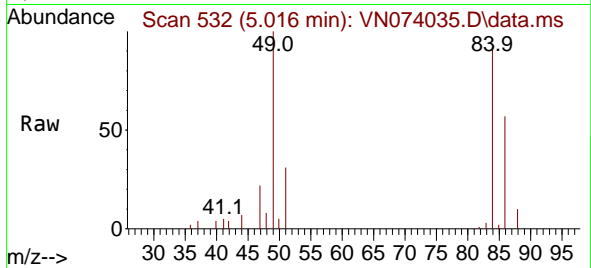




#20
 Methylene Chloride
 Concen: 7.139 ug/l
 RT: 5.016 min Scan# 51
 Delta R.T. 0.006 min
 Lab File: VN074035.D
 Acq: 19 Aug 2022 18:41

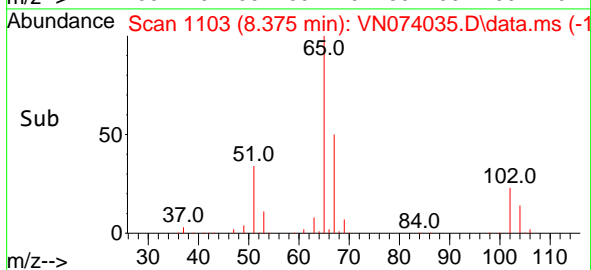
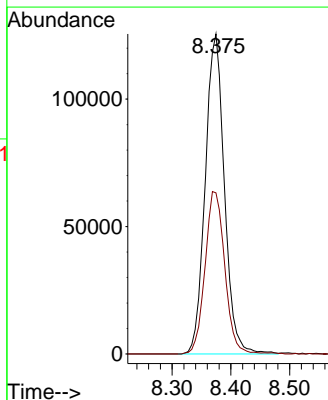
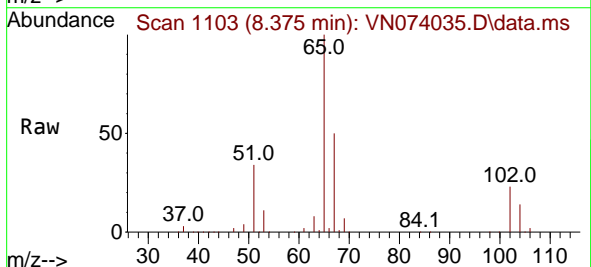
Instrument :
 MSVOA_N
 ClientSampleId :
 PB147119ZHE#06

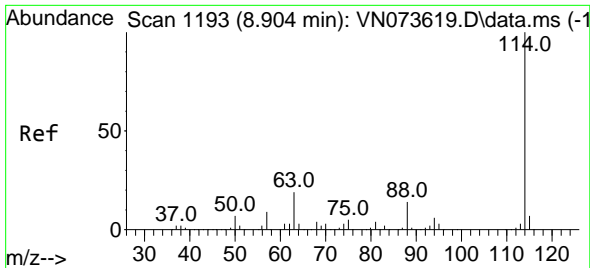
Tgt Ion	Resp	Lower	Upper
84	36689		
Ion Ratio			
84	100		
49	108.9	88.3	132.5
51	33.7	28.2	42.2
86	62.3	50.6	76.0



#33
 1,2-Dichloroethane-d4
 Concen: 55.099 ug/l
 RT: 8.375 min Scan# 1103
 Delta R.T. 0.006 min
 Lab File: VN074035.D
 Acq: 19 Aug 2022 18:41

Tgt Ion	Resp	Lower	Upper
65	284432		
Ion Ratio			
65	100		
67	52.4	0.0	104.8



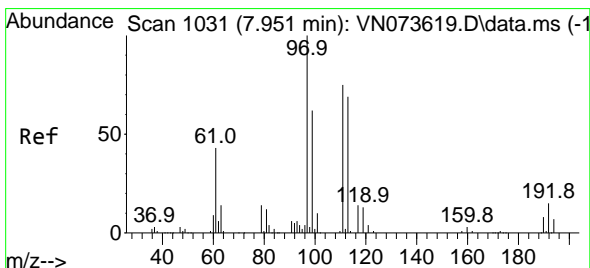
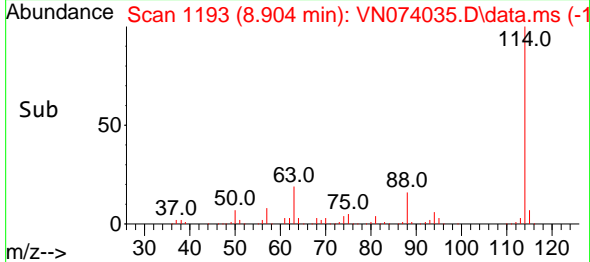
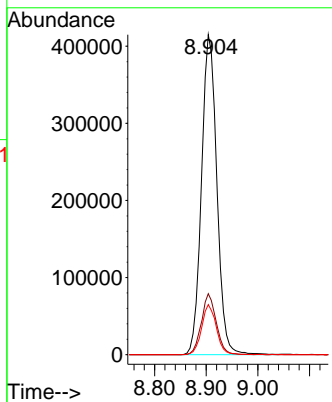
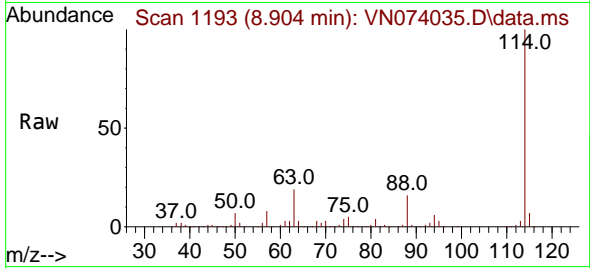


#34
 1,4-Difluorobenzene
 Concen: 50.000 ug/l
 RT: 8.904 min Scan# 1193
 Delta R.T. -0.000 min
 Lab File: VN074035.D
 Acq: 19 Aug 2022 18:41

Instrument : MSVOA_N
 ClientSampleId : PB147119ZHE#06

Tgt Ion:114 Resp: 857183

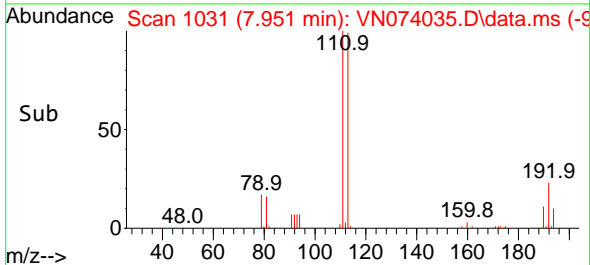
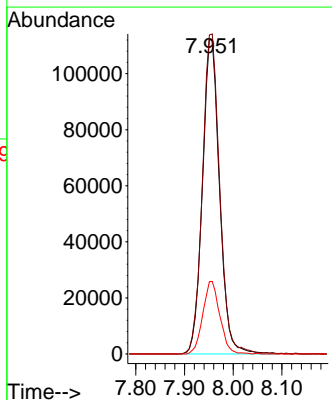
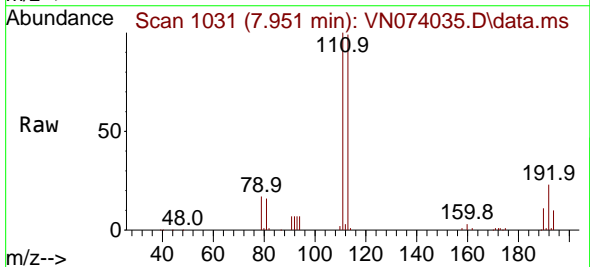
Ion	Ratio	Lower	Upper
114	100		
63	19.1	0.0	40.0
88	15.7	0.0	32.6

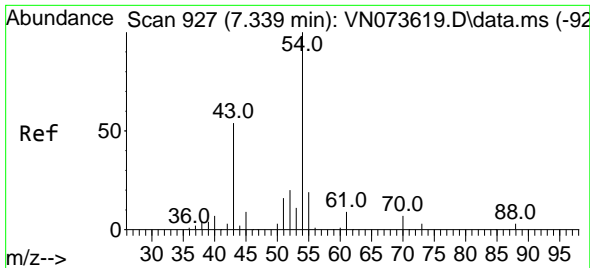


#35
 Dibromofluoromethane
 Concen: 53.967 ug/l
 RT: 7.951 min Scan# 1031
 Delta R.T. 0.000 min
 Lab File: VN074035.D
 Acq: 19 Aug 2022 18:41

Tgt Ion:113 Resp: 273576

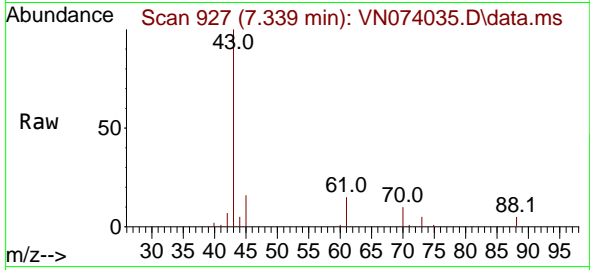
Ion	Ratio	Lower	Upper
113	100		
111	102.8	81.4	122.0
192	22.9	17.0	25.6





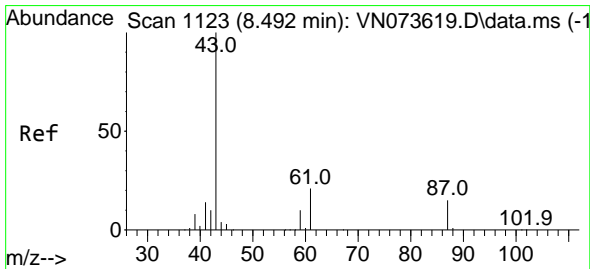
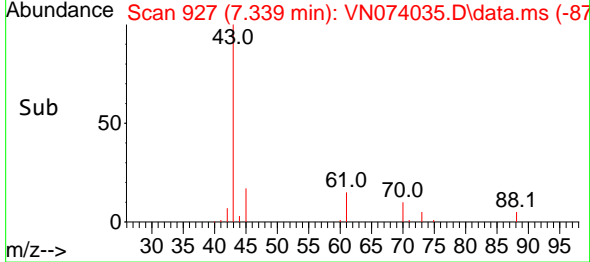
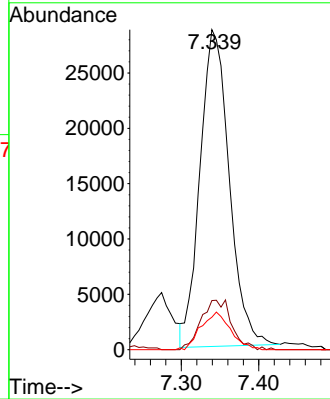
#37
 Ethyl Acetate
 Concen: 8.793 ug/l
 RT: 7.339 min Scan# 91
 Delta R.T. 0.000 min
 Lab File: VN074035.D
 Acq: 19 Aug 2022 18:41

Instrument : MSVOA_N
 ClientSampleId : PB147119ZHE#06



Tgt Ion: 43 Resp: 75008

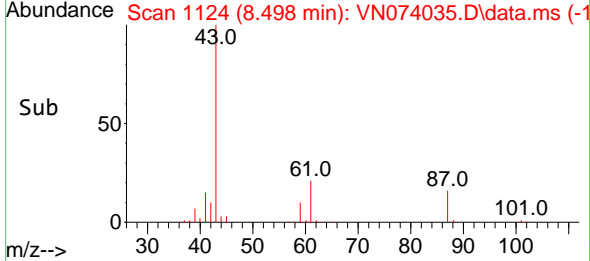
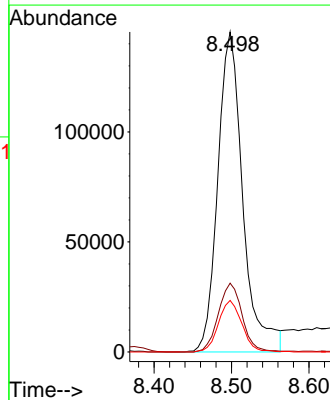
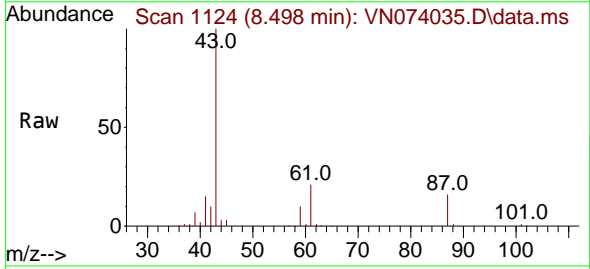
Ion	Ratio	Lower	Upper
43	100		
61	16.5	11.8	17.6
70	11.9	9.3	13.9

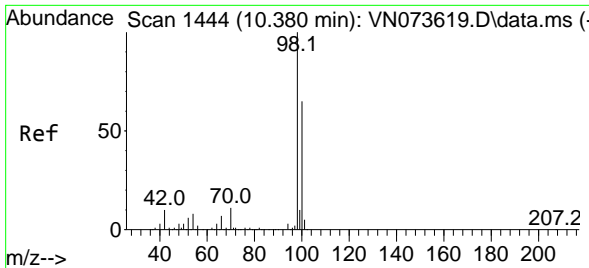


#43
 Isopropyl Acetate
 Concen: 26.890 ug/l
 RT: 8.498 min Scan# 1124
 Delta R.T. 0.006 min
 Lab File: VN074035.D
 Acq: 19 Aug 2022 18:41

Tgt Ion: 43 Resp: 326772

Ion	Ratio	Lower	Upper
43	100		
61	20.5	21.9	32.9#
87	15.0	12.0	18.0

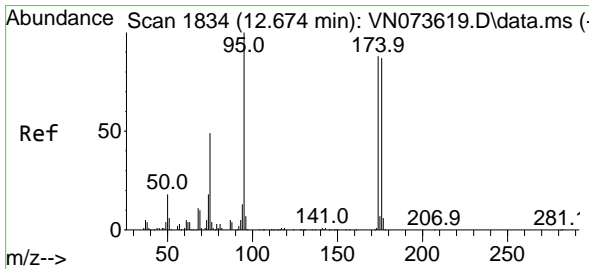
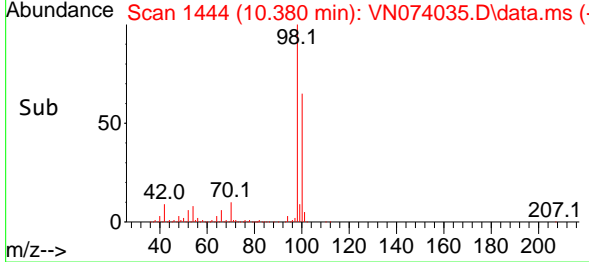
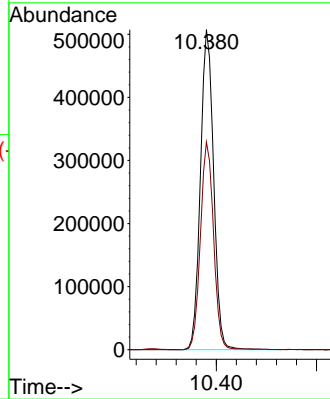
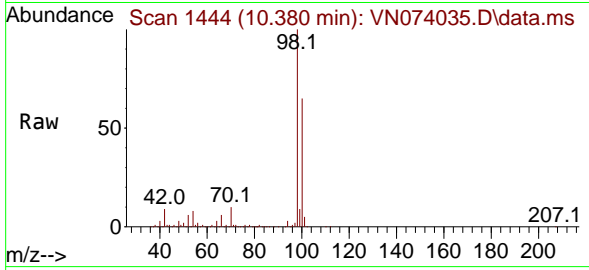




#50
 Toluene-d8
 Concen: 47.059 ug/l
 RT: 10.380 min Scan# 1444
 Delta R.T. 0.000 min
 Lab File: VN074035.D
 Acq: 19 Aug 2022 18:41

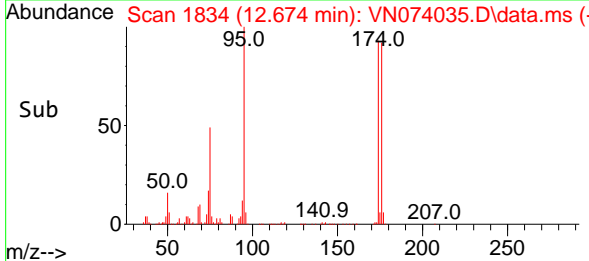
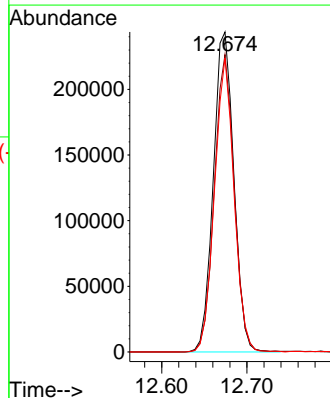
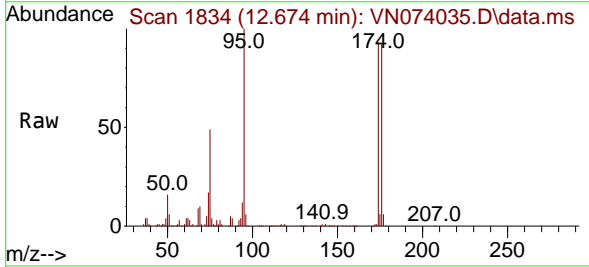
Instrument :
 MSVOA_N
 ClientSampleId :
 PB147119ZHE#06

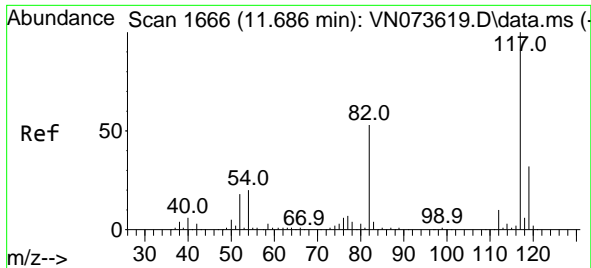
Tgt Ion: 98 Resp: 923900
 Ion Ratio Lower Upper
 98 100
 100 64.9 52.6 78.8



#62
 4-Bromofluorobenzene
 Concen: 62.521 ug/l
 RT: 12.674 min Scan# 1834
 Delta R.T. 0.000 min
 Lab File: VN074035.D
 Acq: 19 Aug 2022 18:41

Tgt Ion: 95 Resp: 407373
 Ion Ratio Lower Upper
 95 100
 174 90.4 0.0 167.6
 176 87.3 0.0 163.4



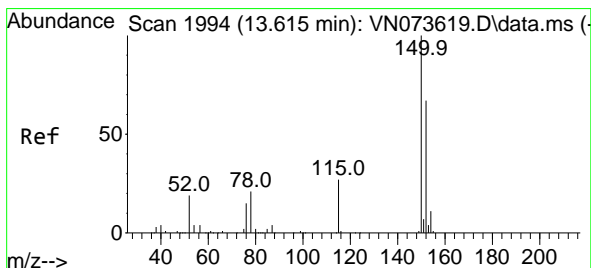
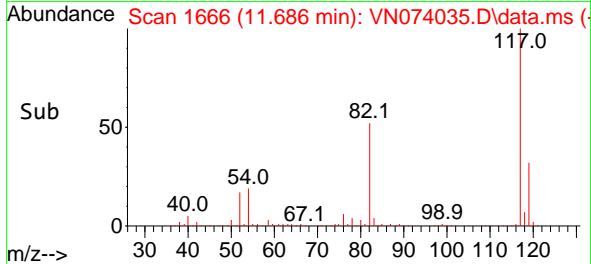
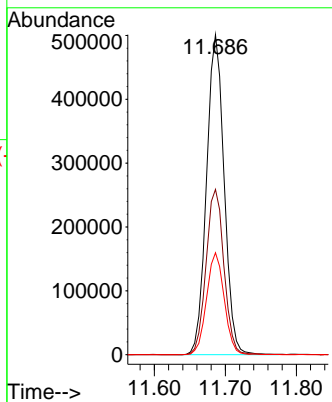
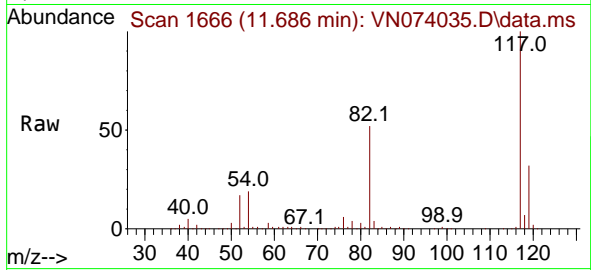


#63
 Chlorobenzene-d5
 Concen: 50.000 ug/l
 RT: 11.686 min Scan# 1170
 Delta R.T. 0.000 min
 Lab File: VN074035.D
 Acq: 19 Aug 2022 18:41

Instrument : MSVOA_N
 ClientSampleId : PB147119ZHE#06

Tgt Ion:117 Resp: 864428

Ion	Ratio	Lower	Upper
117	100		
82	51.6	44.2	66.2
119	31.8	25.4	38.0



#72
 1,4-Dichlorobenzene-d4
 Concen: 50.000 ug/l
 RT: 13.615 min Scan# 1994
 Delta R.T. 0.000 min
 Lab File: VN074035.D
 Acq: 19 Aug 2022 18:41

Tgt Ion:152 Resp: 485699

Ion	Ratio	Lower	Upper
152	100		
115	55.6	28.9	86.7
150	156.5	0.0	356.2

