

Data Path : Z:\VOASRV\HPCHEM1\MSVOA N\DATA\VN082318\
 Data File : VN050839.D
 Acq On : 23 Aug 2018 9:26
 Operator : MD\SY
 Sample : VN0823MBL01
 Misc : 5.00µ/10mL/100uL/5.00mL/MSVOA_N/MEOH
 ALS Vial : 4 Sample Multiplier: 1

Instrument :
 MSVOA_N
 ClientSampled :

Quant Time: Aug 24 01:06:34 2018
 Quant Method : Z:\voasrv\HPCHEM1\MSVOA_N\methods\82N082118W.M
 Quant Title : SW846 8260
 QLast Update : Wed Aug 22 05:38:12 2018
 Response via : Initial Calibration

Internal Standards	R.T.	QIon	Response	Conc	Units	Dev(Min)
1) Pentafluorobenzene	7.67	168	662351	50.00	µg/l	0.00
34) 1,4-Difluorobenzene	8.59	114	1053534	50.00	µg/l	0.00
63) Chlorobenzene-d5	11.41	117	913447	50.00	µg/l	0.00
72) 1,4-Dichlorobenzene-d4	13.35	152	313812	50.00	µg/l	0.00

System Monitoring Compounds	R.T.	QIon	Response	Conc	Units	Dev(Min)
33) 1,2-Dichloroethane-d4	8.03	65	426774	53.52	µg/l	0.00
Spiked Amount				50.000		
Recovery						107.04%
35) Dibromofluoromethane	7.59	113	401784	47.94	µg/l	0.00
Spiked Amount				50.000		
Recovery						95.88%
50) Toluene-d8	10.09	98	1475867	47.10	µg/l	0.00
Spiked Amount				50.000		
Recovery						94.20%
62) 4-Bromofluorobenzene	12.40	95	404974	38.89	µg/l	0.00
Spiked Amount				50.000		
Recovery						77.78%

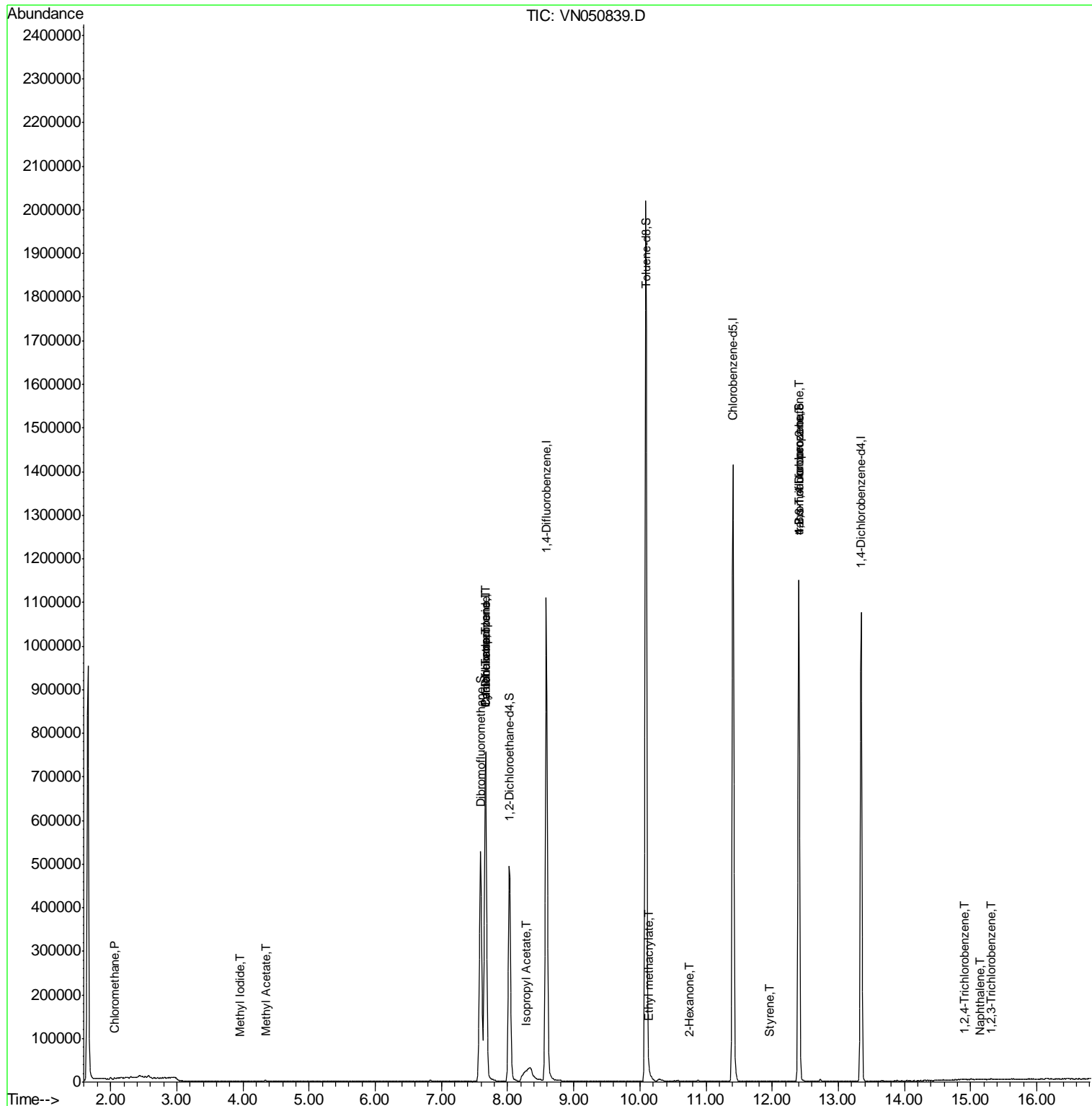
Target Compounds	R.T.	QIon	Response	Conc	Units	Qvalue
3) Chloromethane	2.06	50	2361	0.22	µg/l	90
5) Bromomethane	2.56	94	2589	Below Cal		91
10) Methyl Iodide	3.95	142	351	6.38	µg/l #	43
16) Acetone	3.82	43	994	Below Cal		93
18) Methyl Acetate	4.35	43	4821	0.64	µg/l	99
31) Cyclohexane	7.67	56	10950	1.27	µg/l #	1
36) 1,1-Dichloropropene	7.67	75	44424	3.57	µg/l #	48
38) Carbon Tetrachloride	7.67	117	56290	4.48	µg/l #	18
43) Isopropyl Acetate	8.27	43	29073	2.37	µg/l #	58
56) Ethyl methacrylate	10.15	69	150	2.36	µg/l #	28
59) 2-Hexanone	10.75	43	1050	0.22	µg/l #	23
70) Styrene	11.97	104	222	1.28	µg/l #	36
75) 1,1,2,2-Tetrachloroethane	12.40	83	64	Below Cal	#	1
76) 1,2,3-Trichloropropane	12.40	75	187787	34.17	µg/l #	100
81) trans-1,4-Dichloro-2-buten	12.40	75	187787	115.50	µg/l #	15
93) 1,2,4-Trichlorobenzene	14.90	180	284	4.13	µg/l #	60
94) Hexachlorobutadiene	15.01	225	406	Below Cal		82
95) Naphthalene	15.13	128	1505	5.51	µg/l #	78
96) 1,2,3-Trichlorobenzene	15.31	180	362	3.36	µg/l #	60

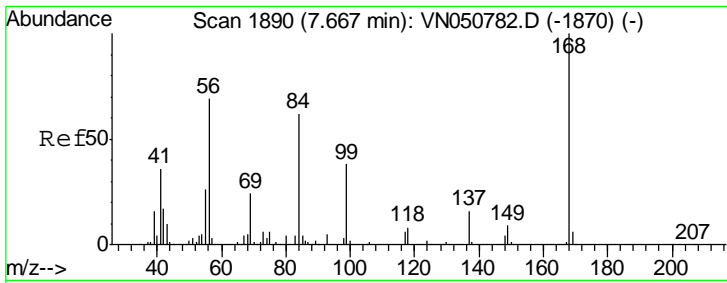
(#) = qualifier out of range (m) = manual integration (+) = signals summed

Data Path : Z:\VOASRV\HPCHEM1\MSVOA N\DATA\VN082318\
 Data File : VN050839.D
 Acq On : 23 Aug 2018 9:26
 Operator : MD\SY
 Sample : VN0823MBL01
 Misc : 5.00µ/10mL/100uL/5.00mL/MSVOA_N/MEOH
 ALS Vial : 4 Sample Multiplier: 1

Instrument :
 MSVOA_N
 ClientSampled :

Quant Time: Aug 24 01:06:34 2018
 Quant Method : Z:\voasrv\HPCHEM1\MSVOA_N\methods\82N082118W.M
 Quant Title : SW846 8260
 QLast Update : Wed Aug 22 05:38:12 2018
 Response via : Initial Calibration

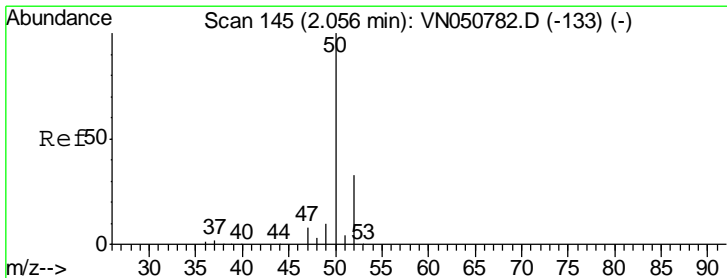
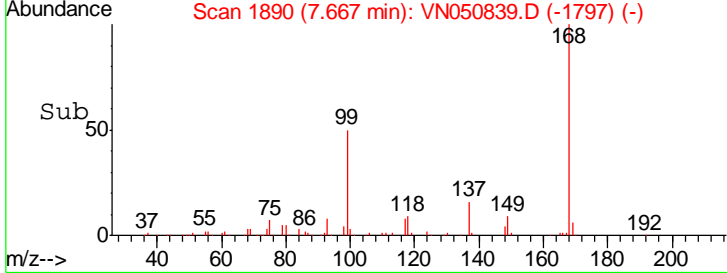
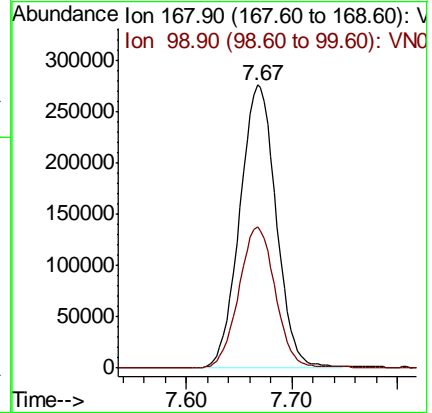
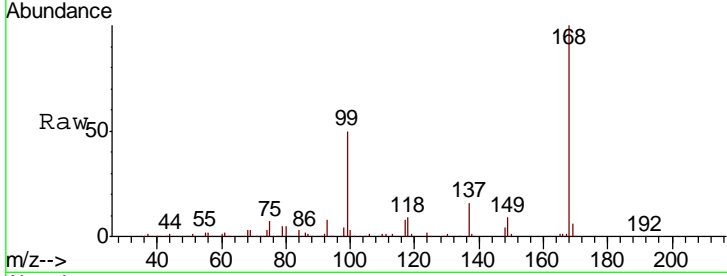




#1
 Pentafluorobenzene
 Concen: 50.00 ug/l
 RT: 7.67 min Scan# 1890
 Delta R.T. 0.00 min
 Lab File: VN050839.D
 Acq: 23 Aug 2018 9:26

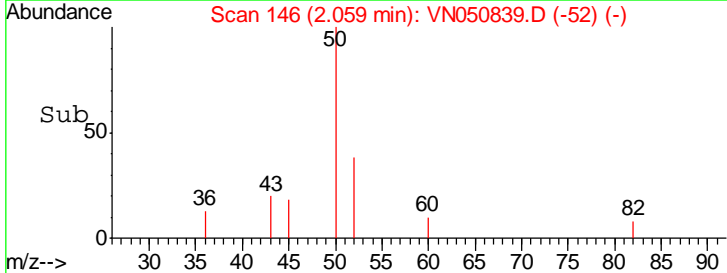
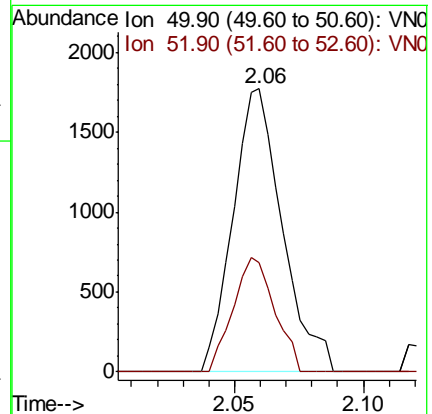
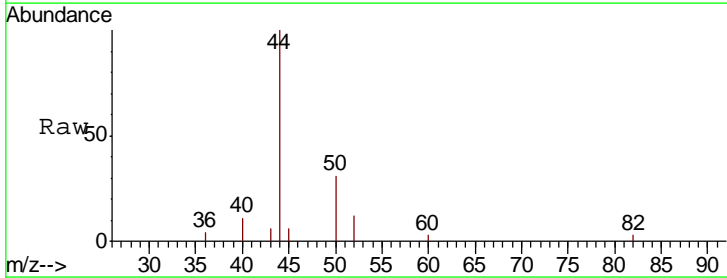
Instrument :
 MSVOA_N
 ClientSampled :

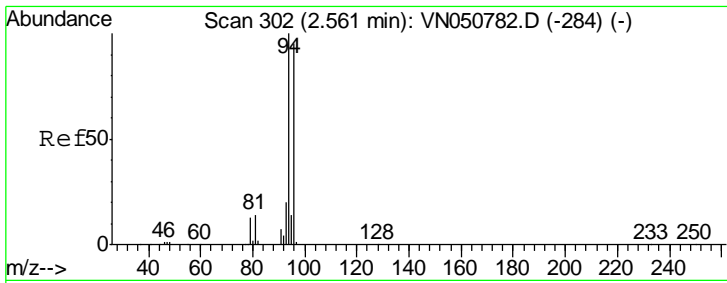
Tgt Ion	Resp	Lower	Upper
168	100		
99	50.0	39.6	59.4



#3
 Chloromethane
 Concen: 0.22 ug/l
 RT: 2.06 min Scan# 146
 Delta R.T. 0.00 min
 Lab File: VN050839.D
 Acq: 23 Aug 2018 9:26

Tgt Ion	Resp	Lower	Upper
50	100		
52	38.4	26.3	39.5

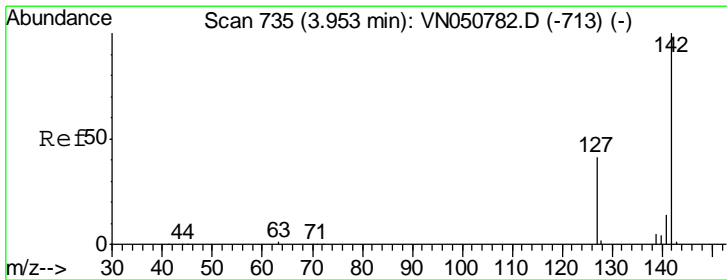
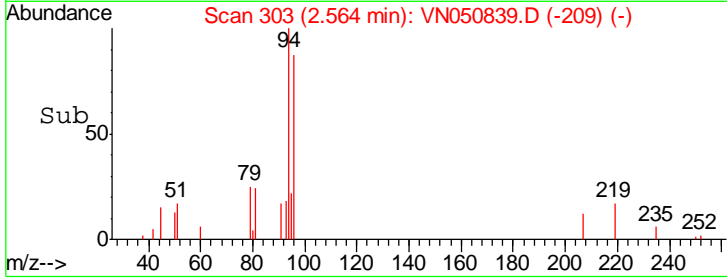
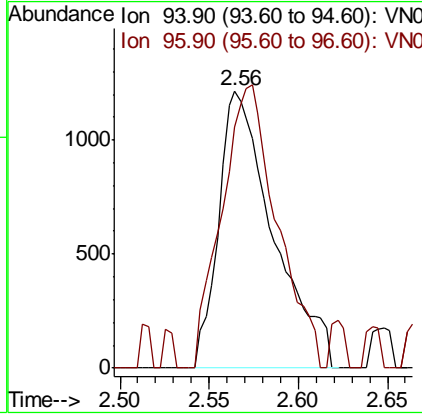
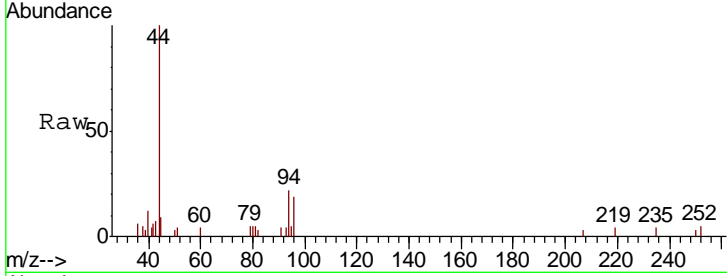




#5
 Bromomethane
 Concen: Below Cal
 RT: 2.56 min Scan# 303
 Delta R.T. 0.00 min
 Lab File: VN050839.D
 Acq: 23 Aug 2018 9:26

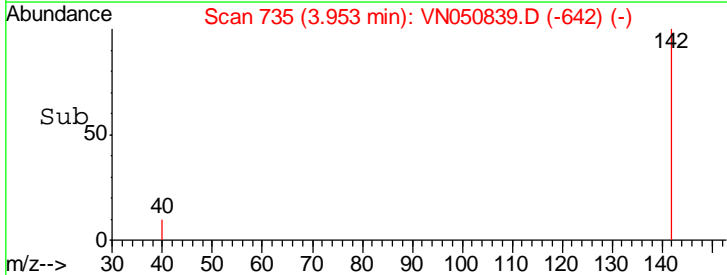
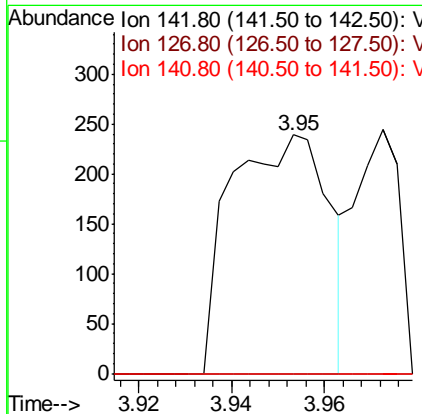
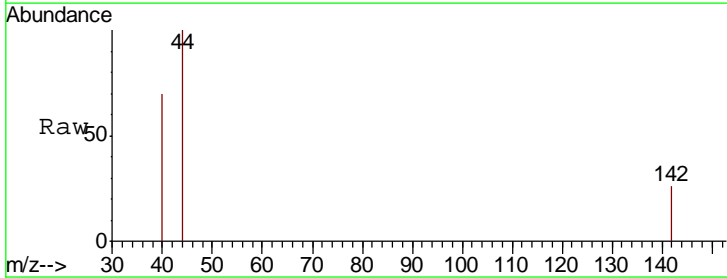
Instrument :
 MSVOA_N
 ClientSampled :

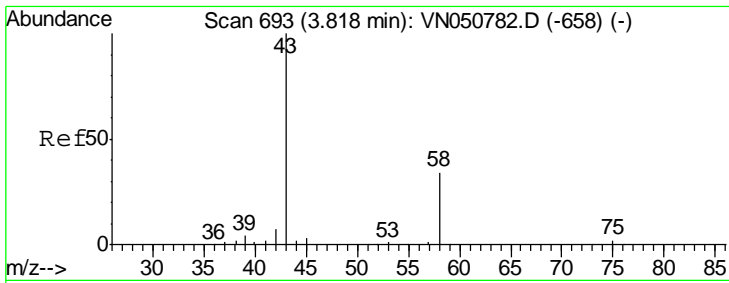
Tot Ion: 94 Resp: 2589
 Ion Ratio Lower Upper
 94 100
 96 86.8 76.2 114.2



#10
 Methyl Iodide
 Concen: 6.38 ug/l
 RT: 3.95 min Scan# 735
 Delta R.T. 0.00 min
 Lab File: VN050839.D
 Acq: 23 Aug 2018 9:26

Tgt Ion: 142 Resp: 351
 Ion Ratio Lower Upper
 142 100
 127 0.0 31.7 47.5#
 141 0.0 11.4 17.0#

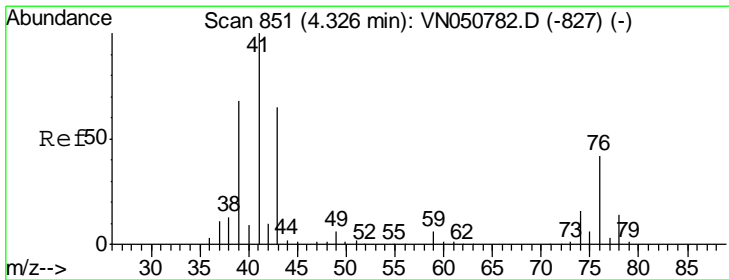
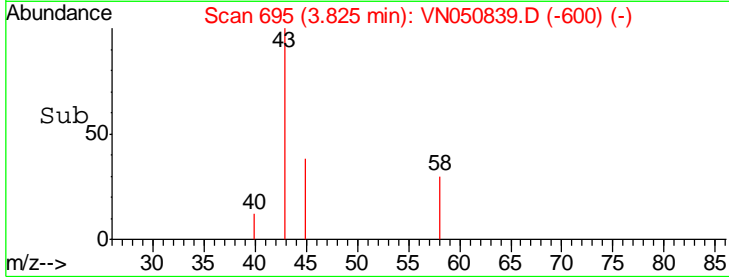
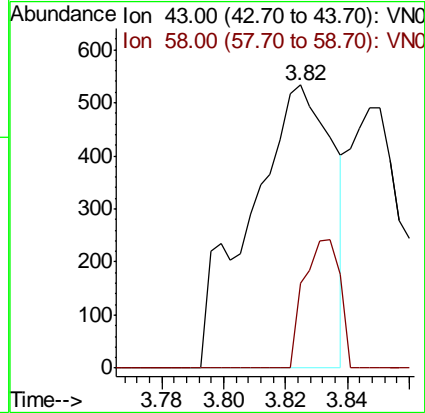
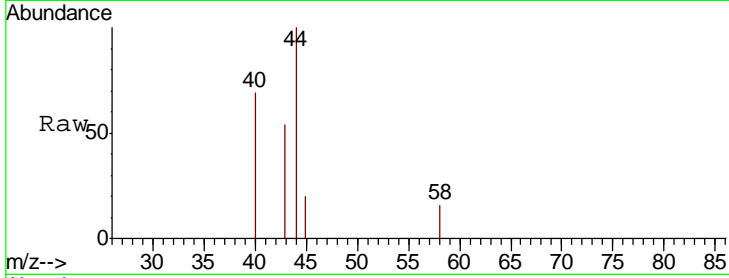




#16
 Acetone
 Concen: Below Cal
 RT: 3.82 min Scan# 695
 Delta R.T. 0.01 min
 Lab File: VN050839.D
 Acq: 23 Aug 2018 9:26

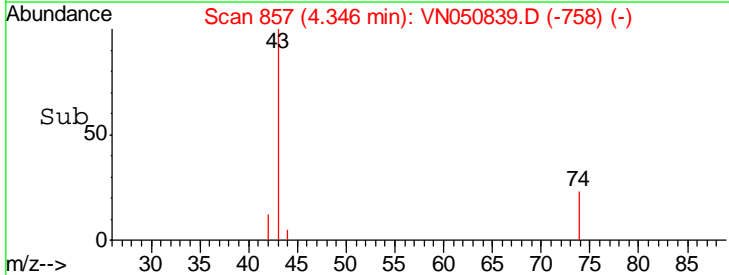
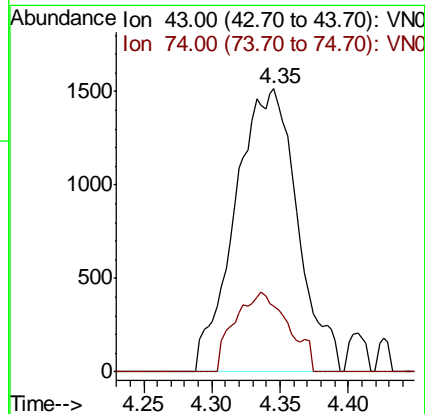
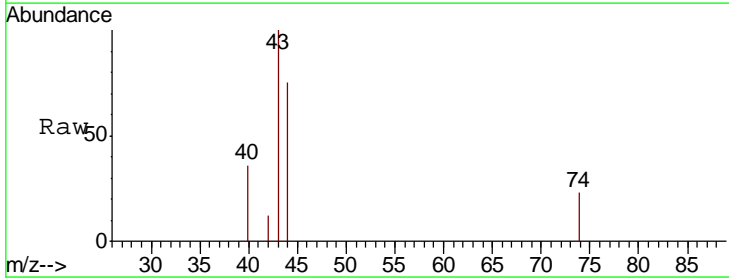
Instrument :
 MSVOA_N
 ClientSampled :

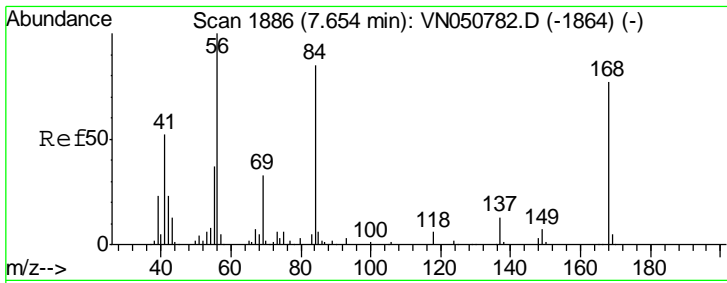
Tgt Ion	Resp	Lower	Upper
43	100		
58	30.0	27.2	40.8



#18
 Methyl Acetate
 Concen: 0.64 ug/l
 RT: 4.35 min Scan# 857
 Delta R.T. 0.02 min
 Lab File: VN050839.D
 Acq: 23 Aug 2018 9:26

Tgt Ion	Resp	Lower	Upper
43	100		
74	24.1	19.8	29.8

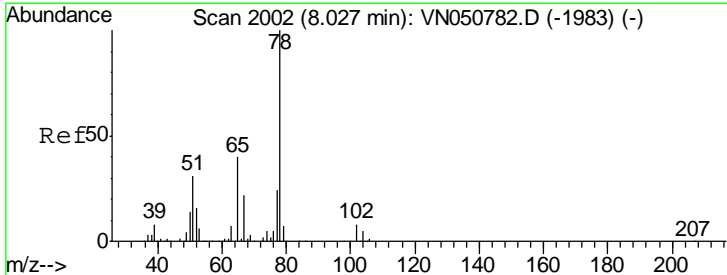
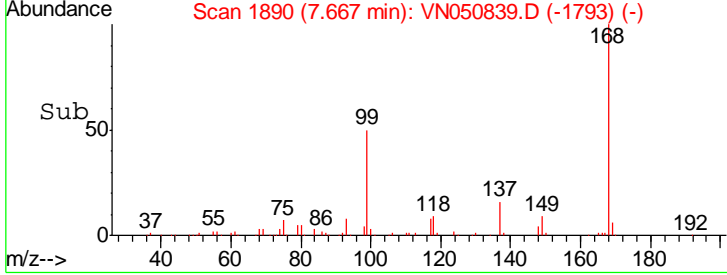
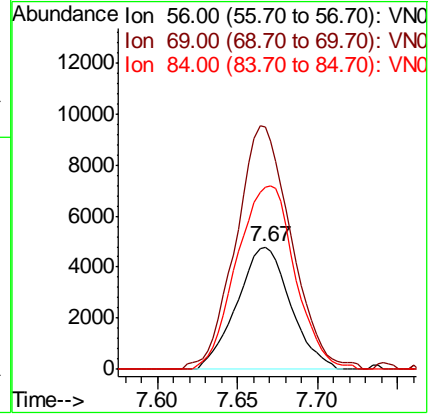
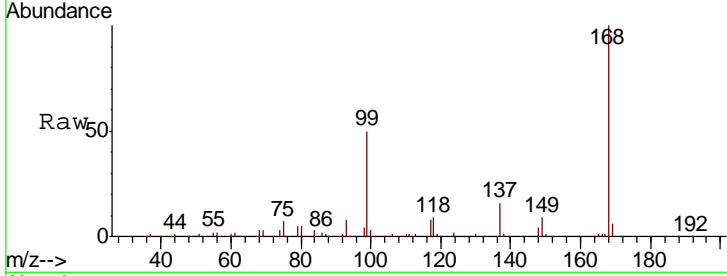




#31
 Cyclohexane
 Concen: 1.27 ug/l
 RT: 7.67 min Scan# 1890
 Delta R.T. 0.01 min
 Lab File: VN050839.D
 Acq: 23 Aug 2018 9:26

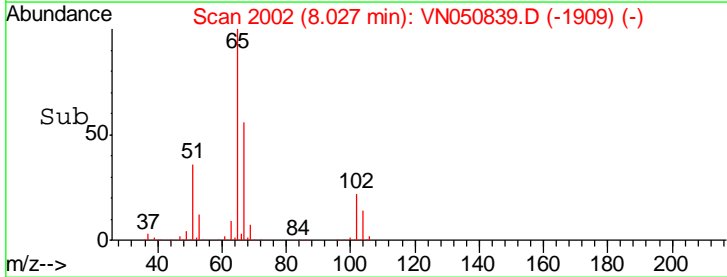
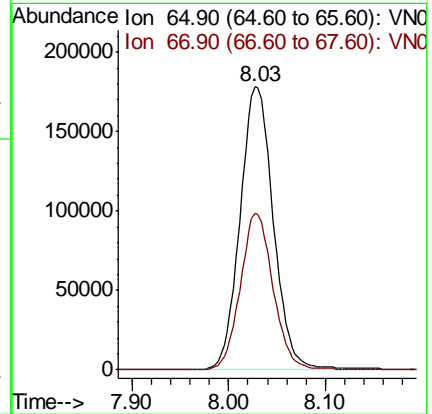
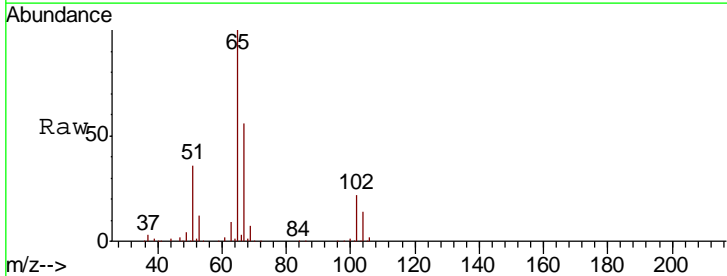
Instrument :
 MSVOA_N
 ClientSampled :

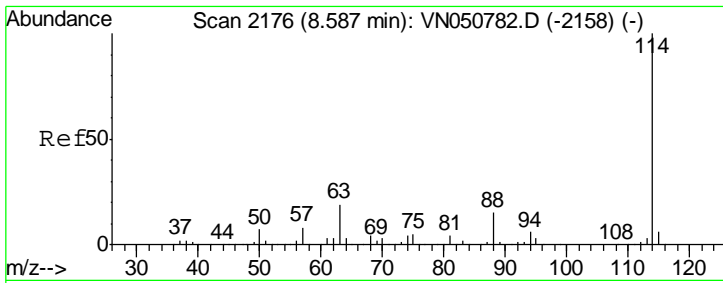
Tgt Ion	Resp	Lower	Upper
56	10950		
69	193.2	26.2	39.4#
84	149.1	68.3	102.5#



#33
 1,2-Dichloroethane-d4
 Concen: 53.52 ug/l
 RT: 8.03 min Scan# 2002
 Delta R.T. 0.00 min
 Lab File: VN050839.D
 Acq: 23 Aug 2018 9:26

Tgt Ion	Resp	Lower	Upper
65	426774		
67	54.3	0.0	110.4



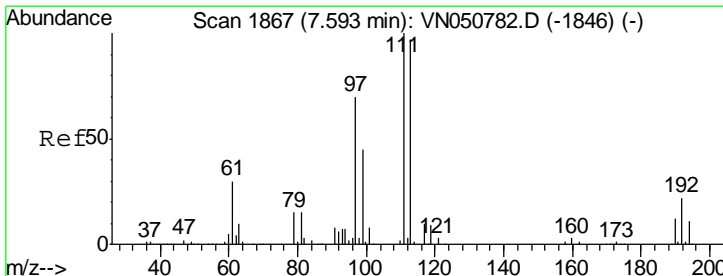
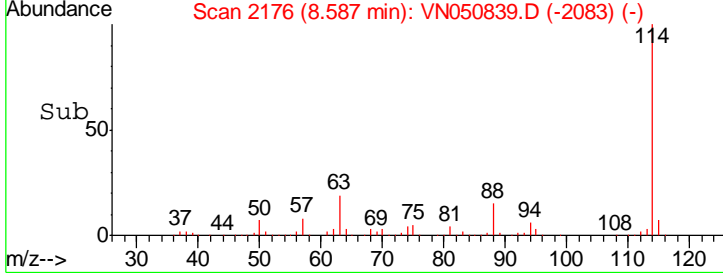
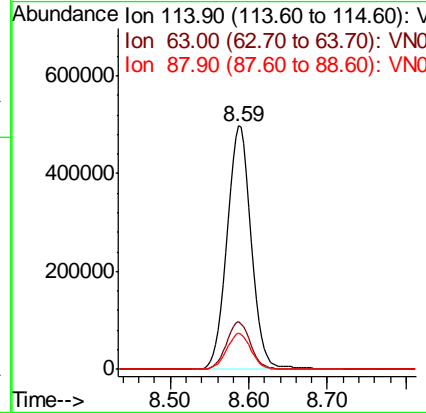
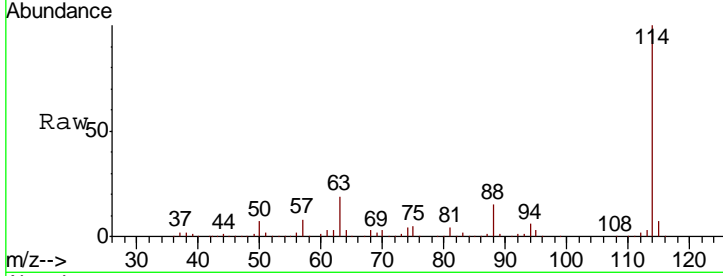


#34
 1,4-Difluorobenzene
 Concen: 50.00 ug/l
 RT: 8.59 min Scan# 2176
 Delta R.T. 0.00 min
 Lab File: VN050839.D
 Acq: 23 Aug 2018 9:26

Instrument :
 MSVOA_N
 ClientSampled :

Tot Ion:114 Resp: 1053534

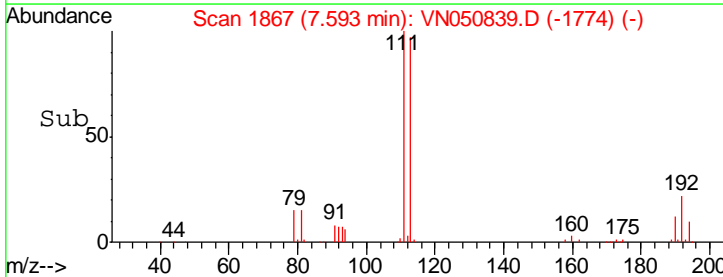
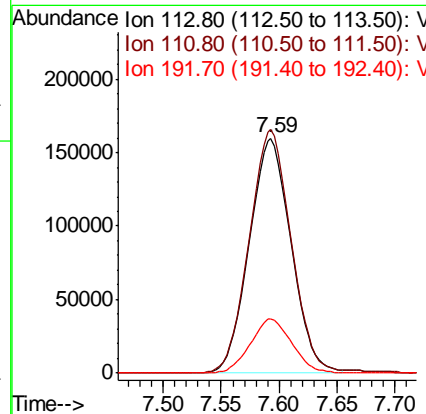
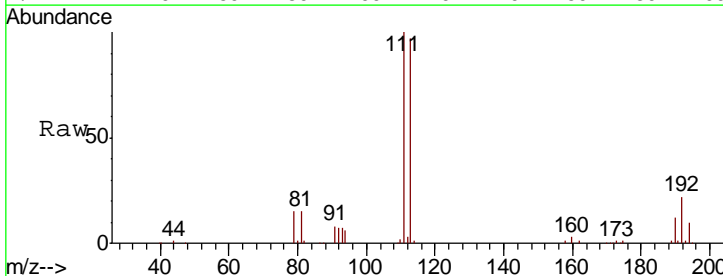
Ion	Ratio	Lower	Upper
114	100		
63	19.5	0.0	38.6
88	14.8	0.0	30.6

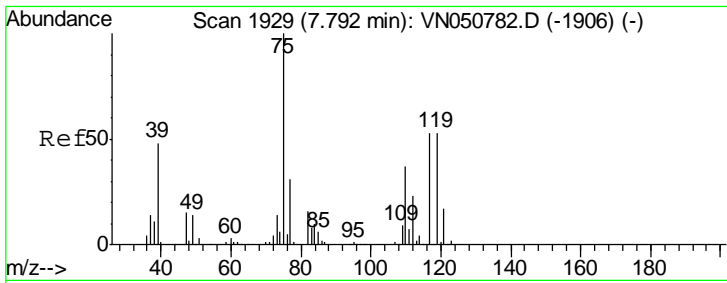


#35
 Dibromofluoromethane
 Concen: 47.94 ug/l
 RT: 7.59 min Scan# 1867
 Delta R.T. 0.00 min
 Lab File: VN050839.D
 Acq: 23 Aug 2018 9:26

Tgt Ion:113 Resp: 401784

Ion	Ratio	Lower	Upper
113	100		
111	104.6	82.6	123.8
192	22.8	18.0	27.0

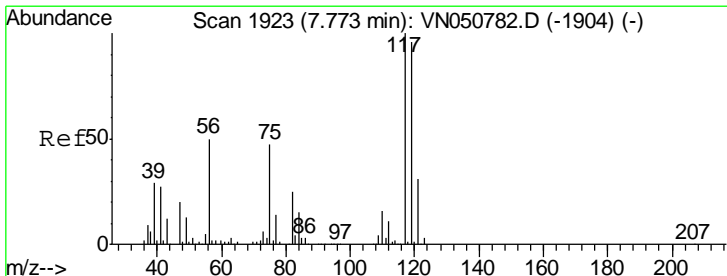
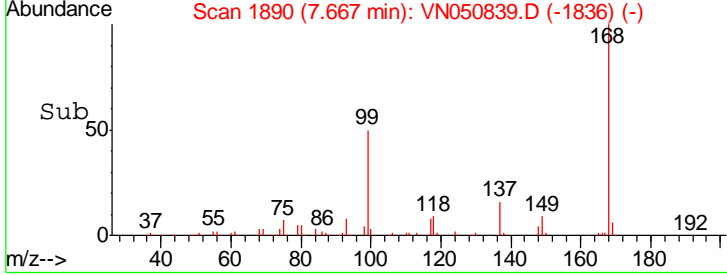
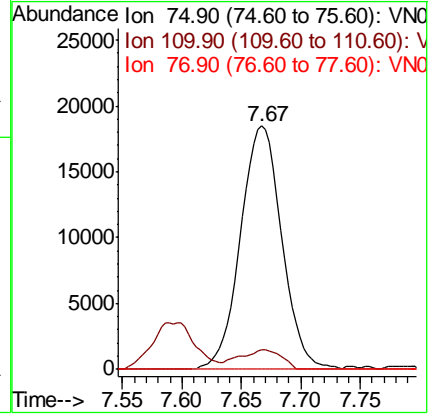
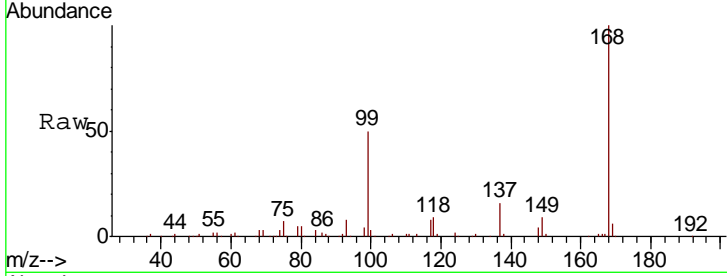




#36
 1,1-Dichloropropene
 Concen: 3.57 ug/l
 RT: 7.67 min Scan# 1890
 Delta R.T. -0.13 min
 Lab File: VN050839.D
 Acq: 23 Aug 2018 9:26

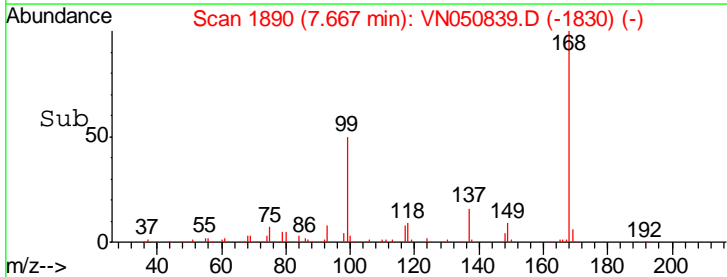
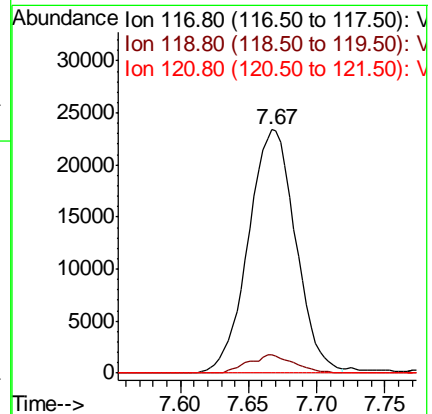
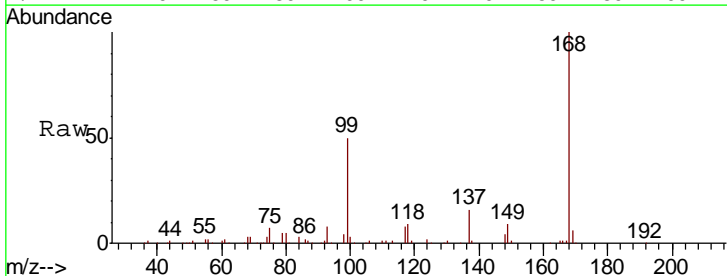
Instrument :
 MSVOA_N
 ClientSampled :

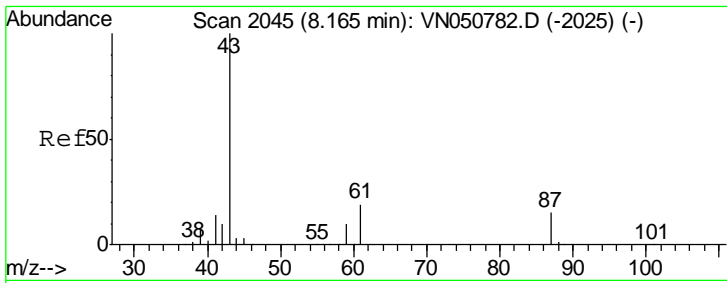
Tgt Ion	Resp	Lower	Upper
75	100		
110	8.3	18.1	54.4#
77	0.0	24.8	37.2#



#38
 Carbon Tetrachloride
 Concen: 4.48 ug/l
 RT: 7.67 min Scan# 1890
 Delta R.T. -0.11 min
 Lab File: VN050839.D
 Acq: 23 Aug 2018 9:26

Tgt Ion	Resp	Lower	Upper
117	100		
119	7.6	76.3	114.5#
121	0.0	24.6	36.8#

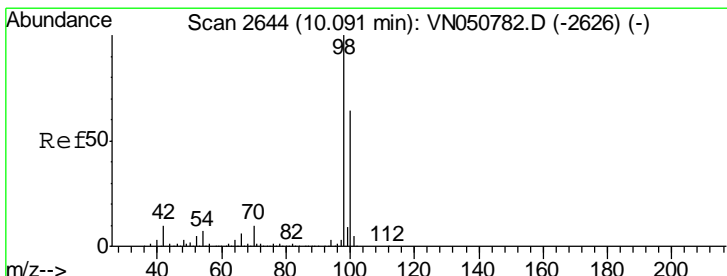
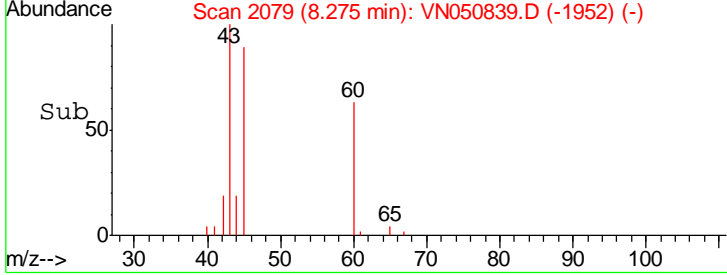
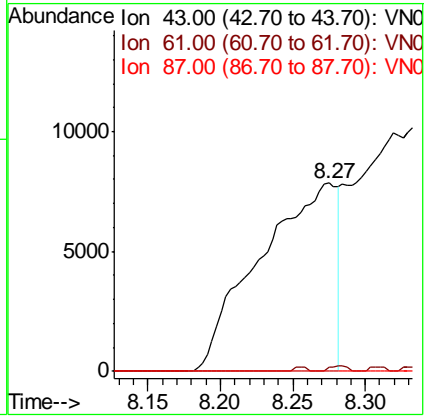
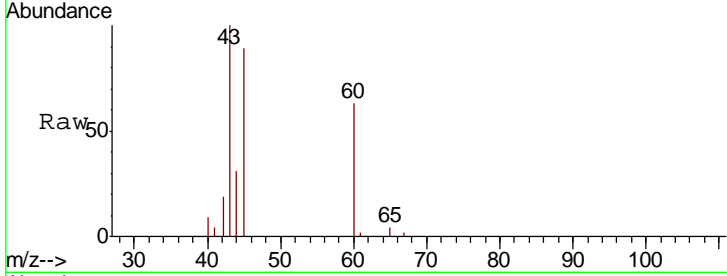




#43
 Isopropyl Acetate
 Concen: 2.37 ug/l
 RT: 8.27 min Scan# 2079
 Delta R.T. 0.11 min
 Lab File: VN050839.D
 Acq: 23 Aug 2018 9:26

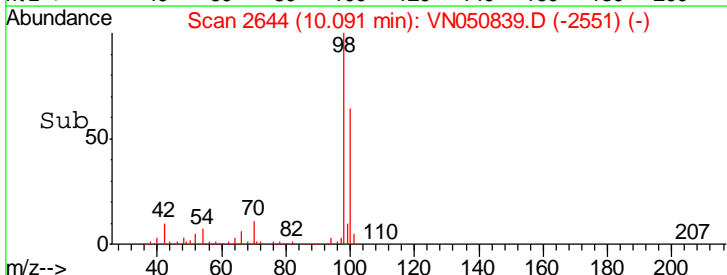
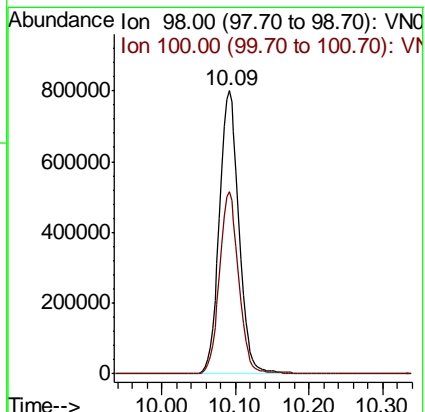
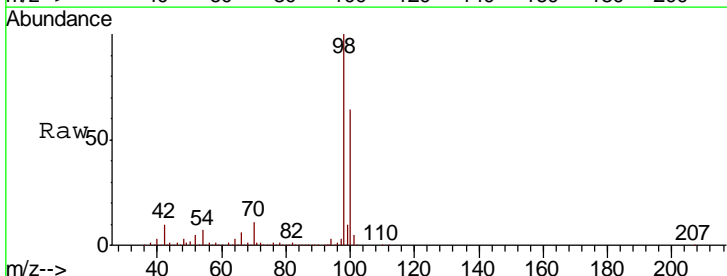
Instrument :
 MSVOA_N
 ClientSampled :

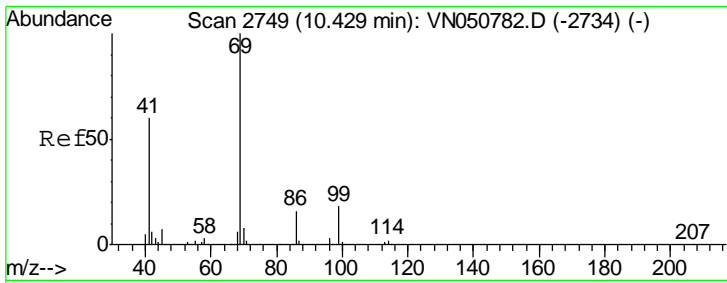
Tgt Ion	Resp	Lower	Upper
43	100		
61	0.0	17.5	26.3#
87	0.0	11.3	16.9#



#50
 Toluene-d8
 Concen: 47.10 ug/l
 RT: 10.09 min Scan# 2644
 Delta R.T. 0.00 min
 Lab File: VN050839.D
 Acq: 23 Aug 2018 9:26

Tgt Ion	Resp	Lower	Upper
98	100		
100	63.3	51.5	77.3

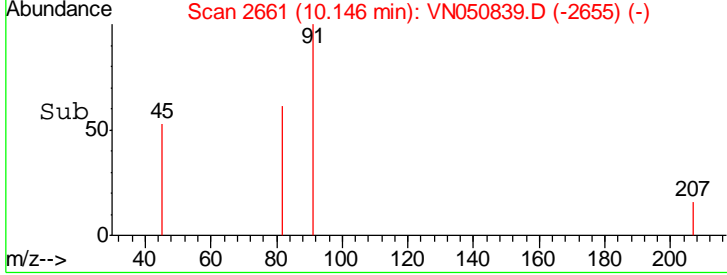
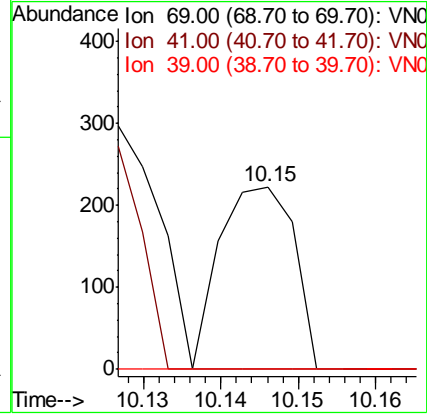
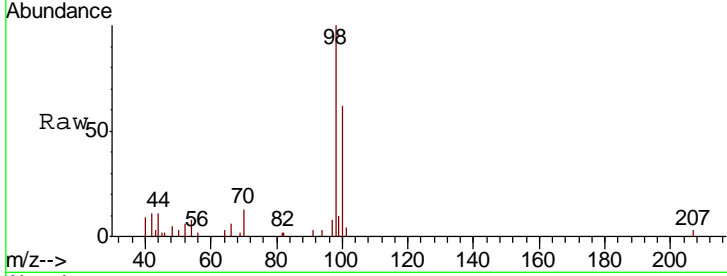




#56
 Ethyl methacrylate
 Concen: 2.36 ug/l
 RT: 10.15 min Scan# 2661
 Delta R.T. -0.28 min
 Lab File: VN050839.D
 Acq: 23 Aug 2018 9:26

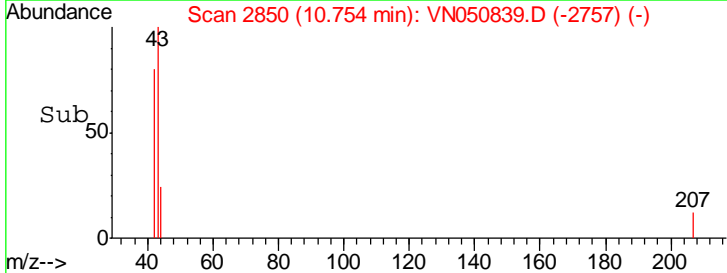
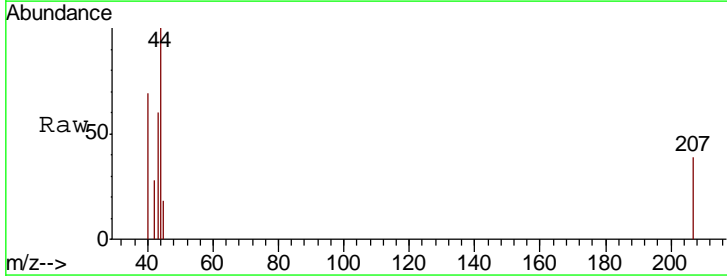
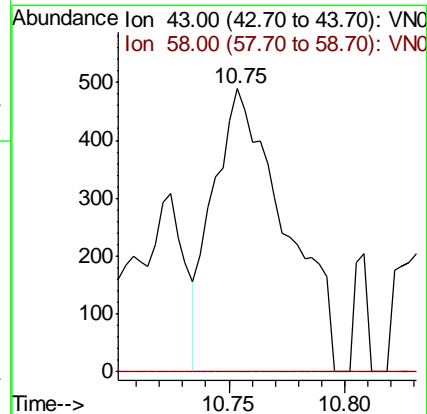
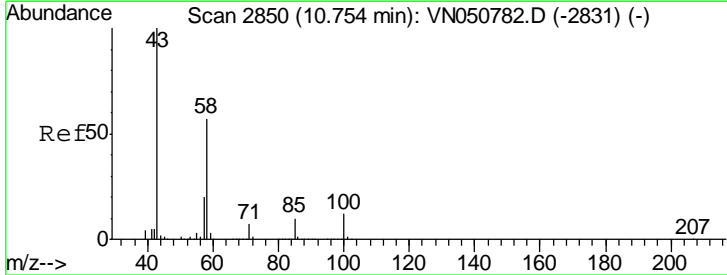
Instrument : MSVOA_N
 ClientSampled :

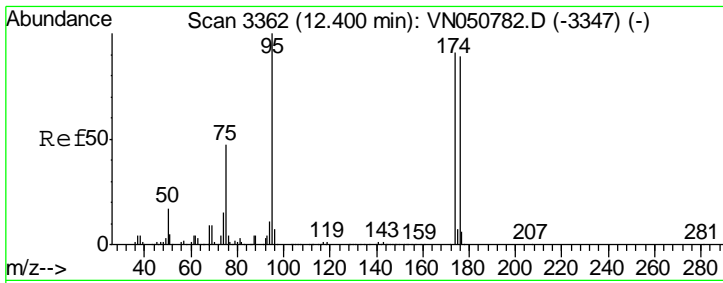
Tgt Ion	Resp	Lower	Upper
69	100		
41	0.0	48.3	72.5#
39	0.0	24.0	36.0#



#59
 2-Hexanone
 Concen: 0.22 ug/l
 RT: 10.75 min Scan# 2850
 Delta R.T. 0.00 min
 Lab File: VN050839.D
 Acq: 23 Aug 2018 9:26

Tgt Ion	Resp	Lower	Upper
43	100		
58	0.0	28.3	85.0#

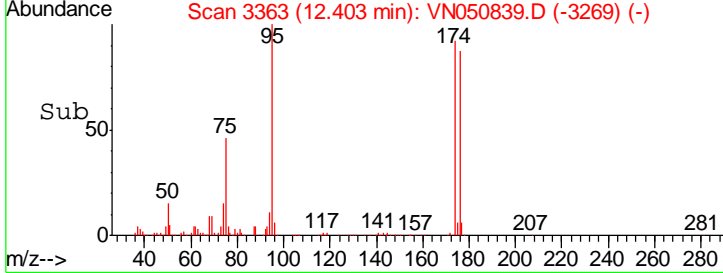
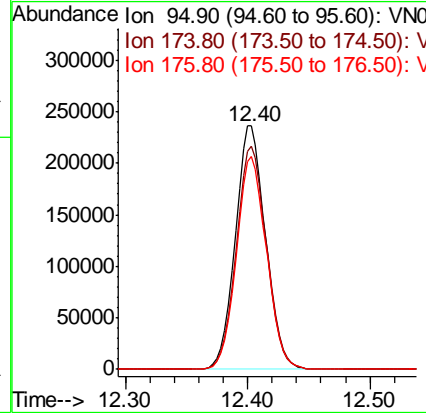
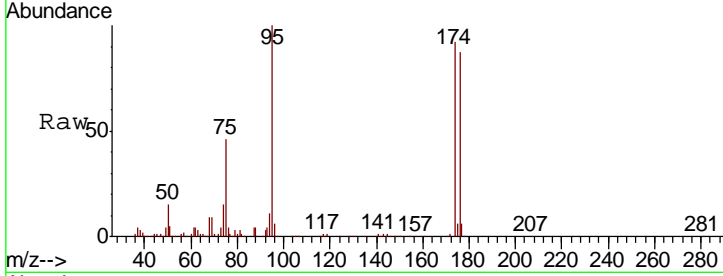




#62
 4-Bromofluorobenzene
 Concen: 38.89 ug/l
 RT: 12.40 min Scan# 3363
 Delta R.T. 0.00 min
 Lab File: VN050839.D
 Acq: 23 Aug 2018 9:26

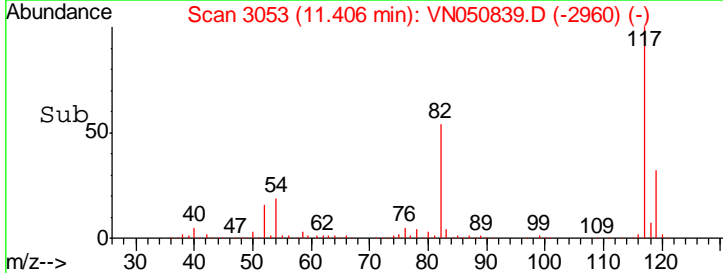
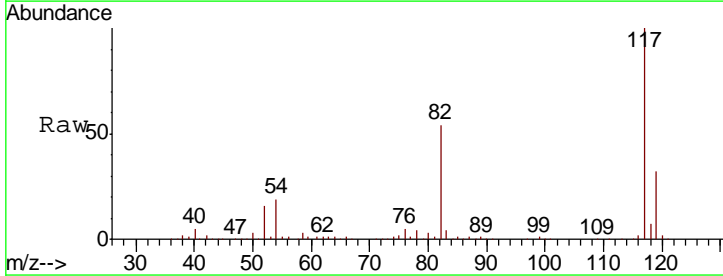
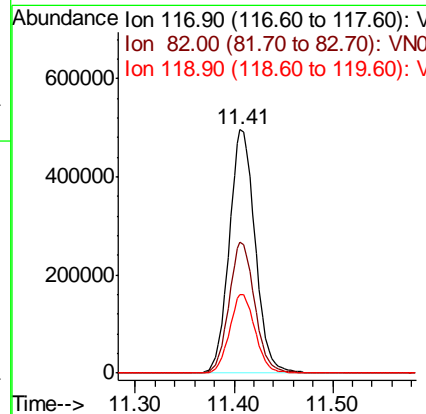
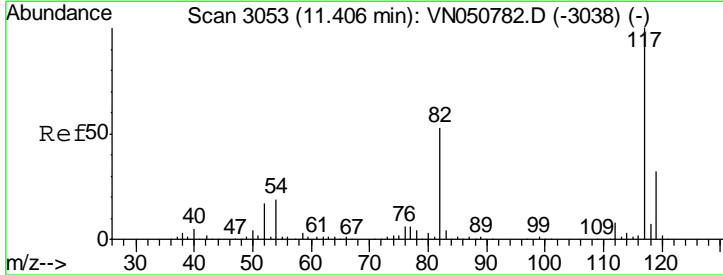
Instrument :
 MSVOA_N
 ClientSampled :

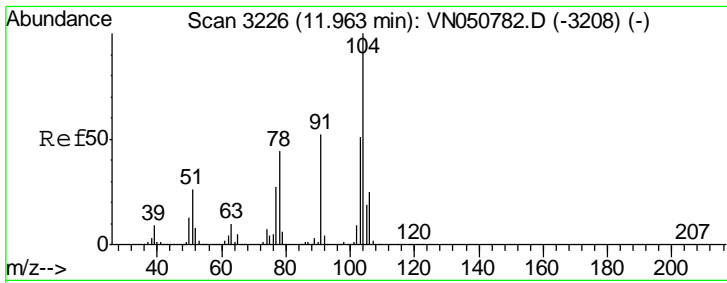
Tgt Ion	Resp	Lower	Upper
95	404974		
174	92.1	0.0	183.0
176	87.1	0.0	178.8



#63
 Chlorobenzene-d5
 Concen: 50.00 ug/l
 RT: 11.41 min Scan# 3053
 Delta R.T. 0.00 min
 Lab File: VN050839.D
 Acq: 23 Aug 2018 9:26

Tgt Ion	Resp	Lower	Upper
117	913447		
82	53.9	42.6	64.0
119	32.5	25.8	38.6

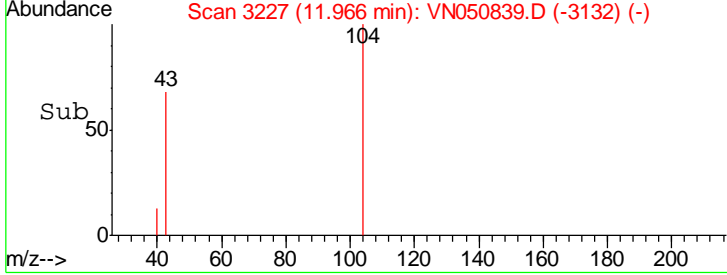
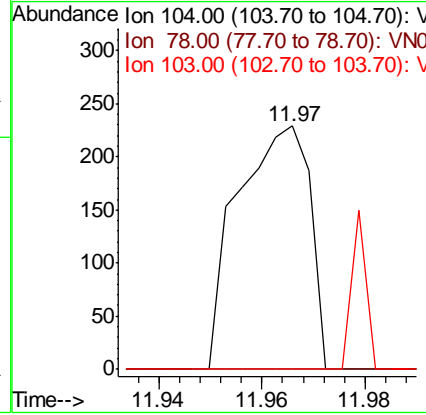
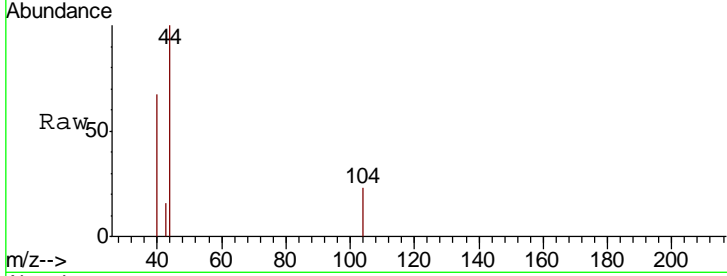




#70
 Styrene
 Concen: 1.28 ug/l
 RT: 11.97 min Scan# 3227
 Delta R.T. 0.00 min
 Lab File: VN050839.D
 Acq: 23 Aug 2018 9:26

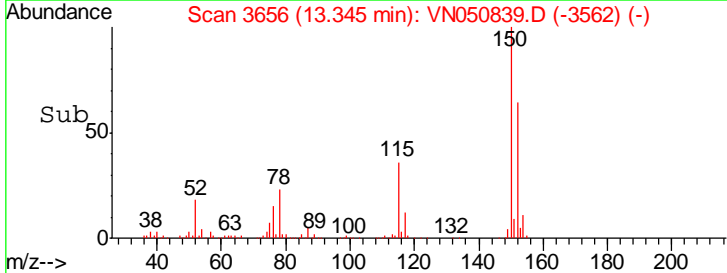
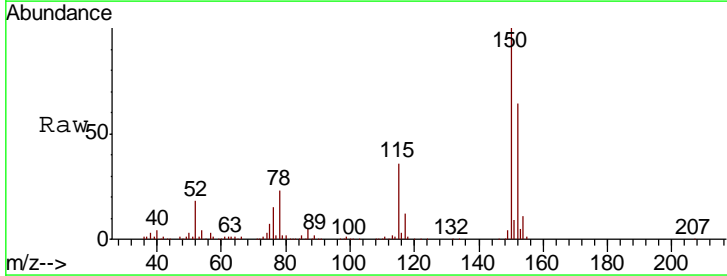
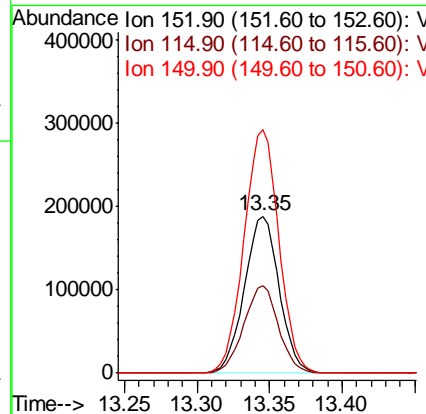
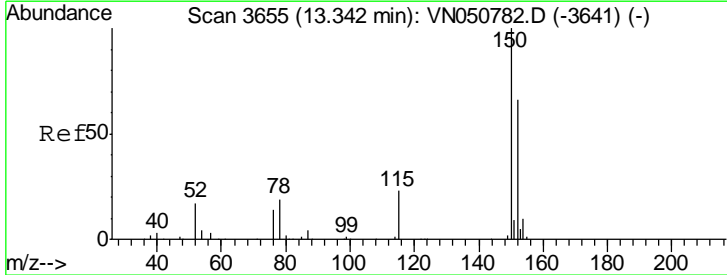
Instrument :
 MSVOA_N
 ClientSampled :

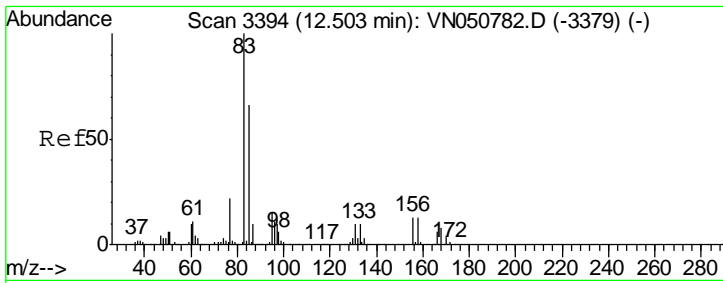
Tgt Ion	Resp	Lower	Upper
104	100		
78	0.0	38.2	57.4#
103	13.1	44.4	66.6#



#72
 1,4-Dichlorobenzene-d4
 Concen: 50.00 ug/l
 RT: 13.35 min Scan# 3656
 Delta R.T. 0.00 min
 Lab File: VN050839.D
 Acq: 23 Aug 2018 9:26

Tgt Ion	Resp	Lower	Upper
152	100		
115	55.8	27.8	83.4
150	156.1	0.0	351.4

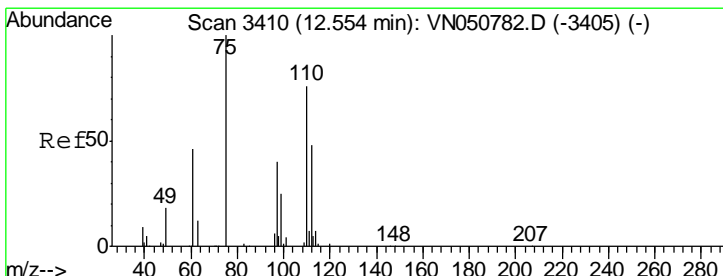
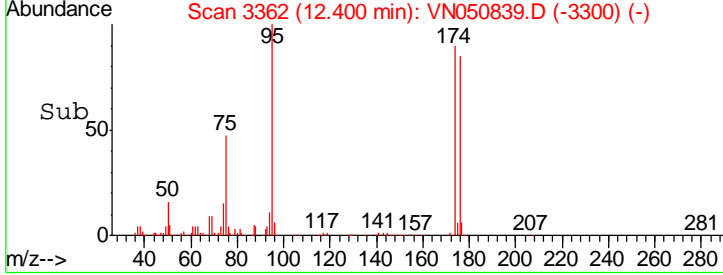
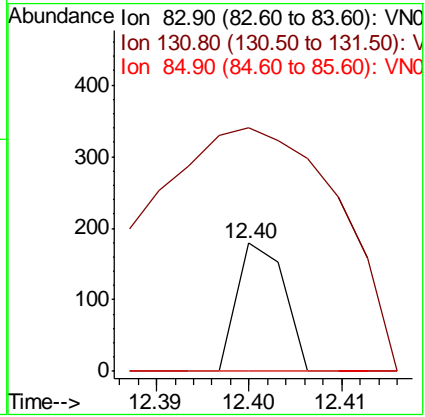
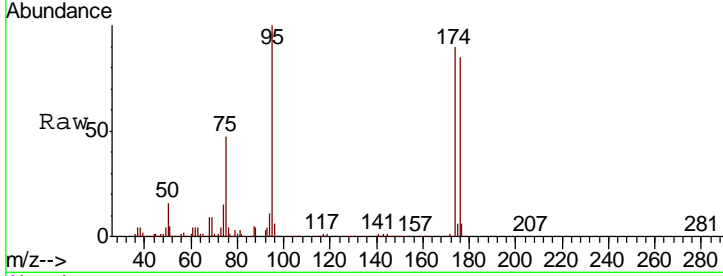




#75
 1,1,2,2-Tetrachloroethane
 Concen: Below Cal
 RT: 12.40 min Scan# 3362
 Delta R.T. -0.10 min
 Lab File: VN050839.D
 Acq: 23 Aug 2018 9:26

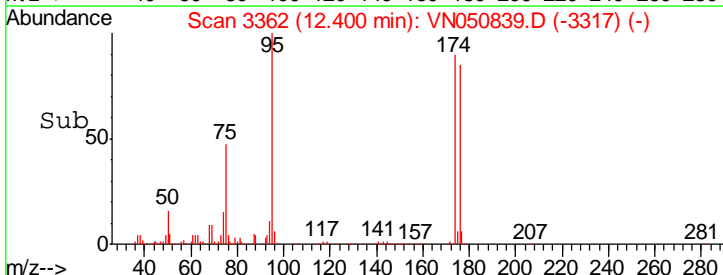
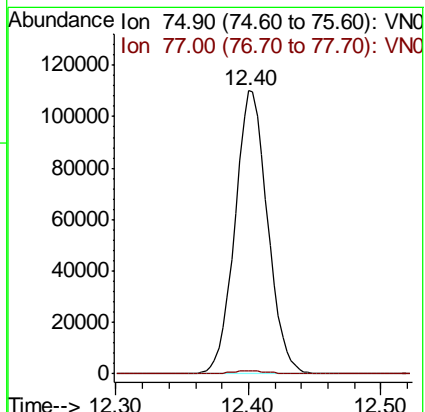
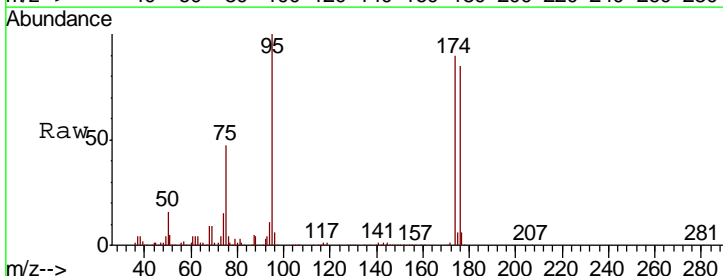
Instrument : MSVOA_N
 ClientSampled :

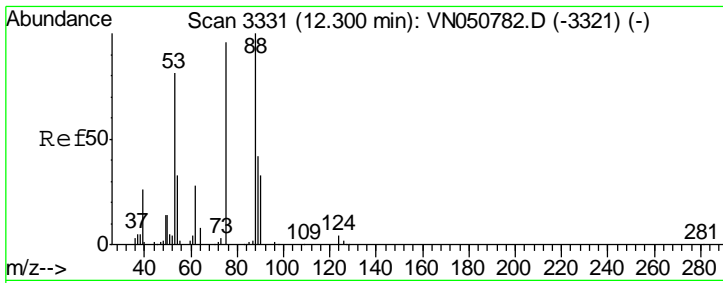
Tgt Ion	Resp	Lower	Upper
83	100		
131	732.8	5.3	15.9#
85	0.0	31.9	95.7#



#76
 1,2,3-Trichloropropane
 Concen: 34.17 ug/l
 RT: 12.40 min Scan# 3362
 Delta R.T. -0.15 min
 Lab File: VN050839.D
 Acq: 23 Aug 2018 9:26

Tgt Ion	Resp	Lower	Upper
75	100		
77	1.2	0.0	0.0#

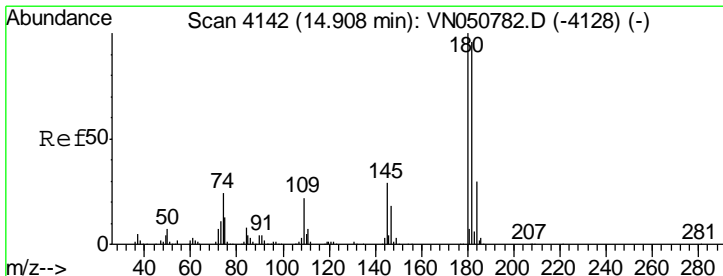
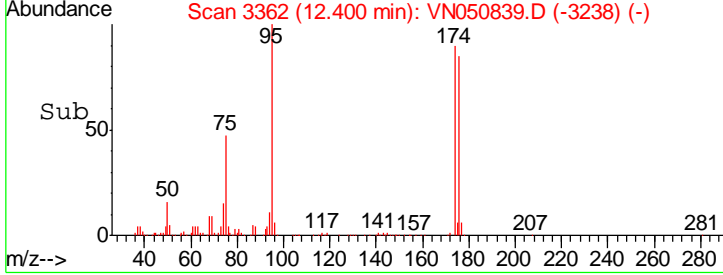
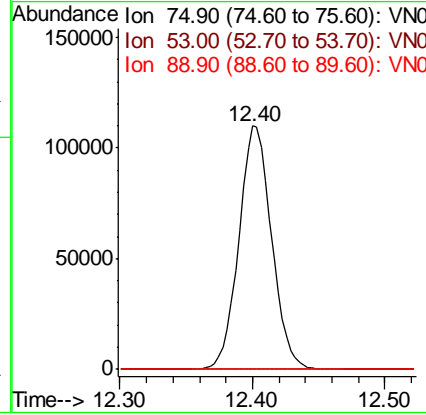
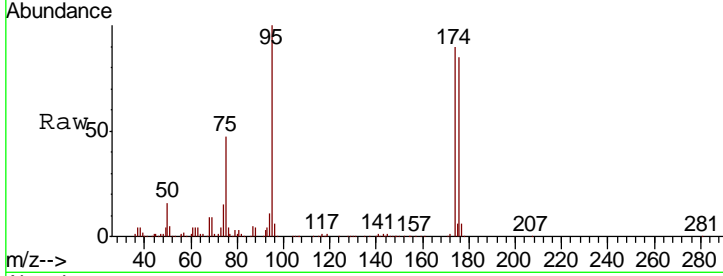




#81
 trans-1,4-Dichloro-2-butene
 Concen: 115.50 ug/l
 RT: 12.40 min Scan# 3362
 Delta R.T. 0.10 min
 Lab File: VN050839.D
 Acq: 23 Aug 2018 9:26

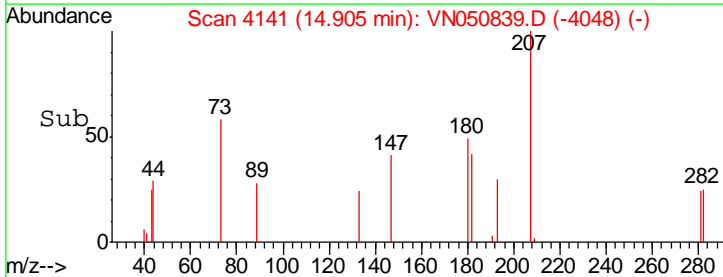
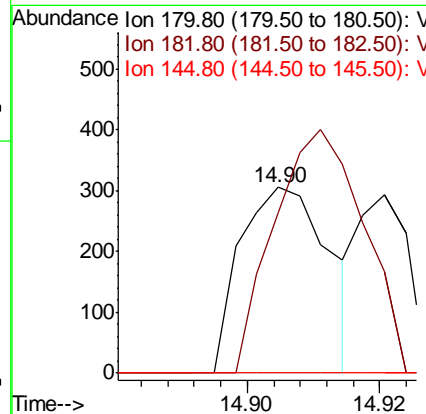
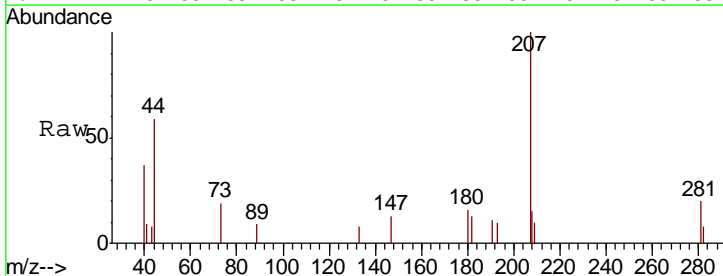
Instrument : MSVOA_N
 ClientSampled :

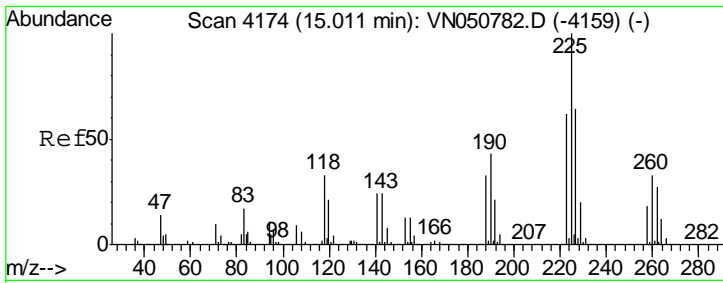
Tgt Ion	Resp	Lower	Upper
75	100		
53	0.1	68.9	103.3#
89	0.0	36.1	54.1#



#93
 1,2,4-Trichlorobenzene
 Concen: 4.13 ug/l
 RT: 14.90 min Scan# 4141
 Delta R.T. -0.00 min
 Lab File: VN050839.D
 Acq: 23 Aug 2018 9:26

Tgt Ion	Resp	Lower	Upper
180	100		
182	132.4	48.2	144.6
145	0.0	14.1	42.2#

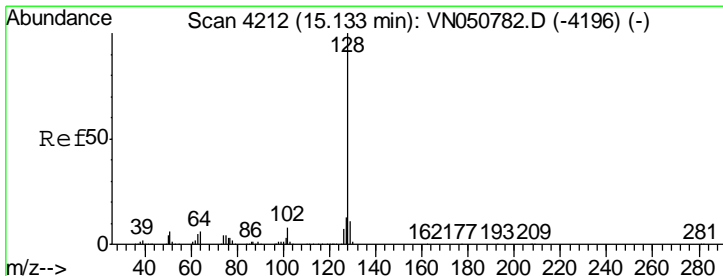
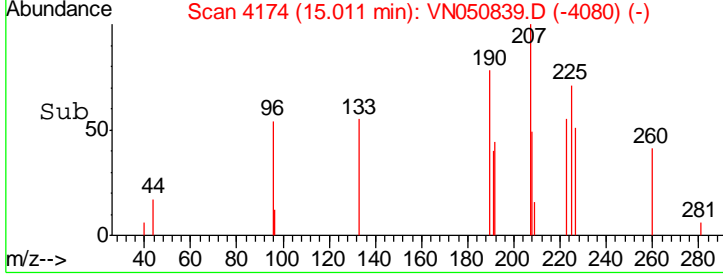
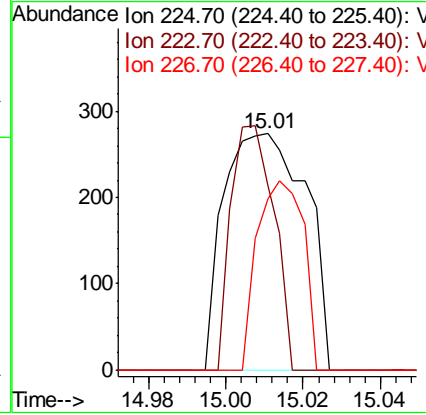
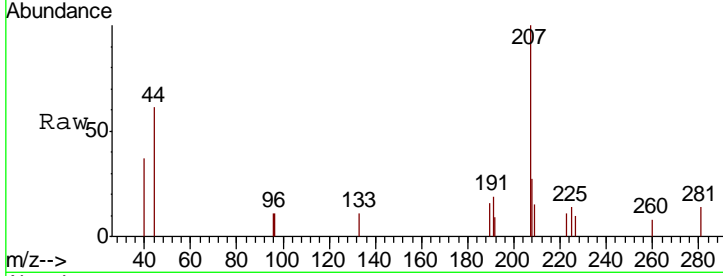




#94
 Hexachlorobutadiene
 Concen: Below Cal
 RT: 15.01 min Scan# 4174
 Delta R.T. 0.00 min
 Lab File: VN050839.D
 Acq: 23 Aug 2018 9:26

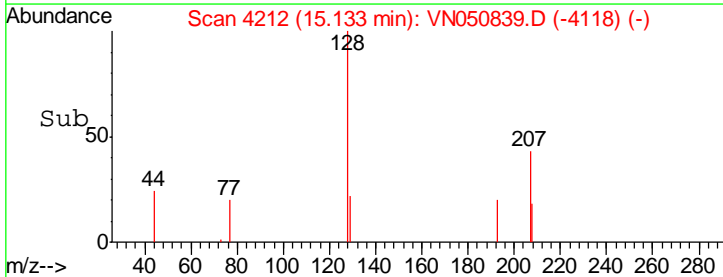
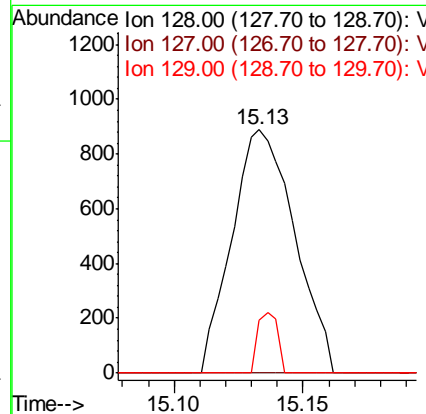
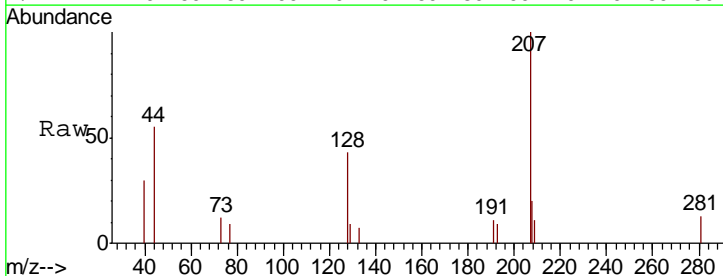
Instrument : MSVOA_N
 Client Sampled :

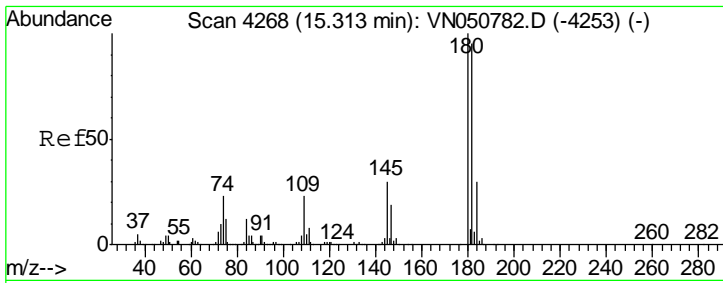
Tgt Ion	Resp	Lower	Upper
225	406		
223	53.4	31.3	93.8
227	44.8	32.0	96.2



#95
 Naphthalene
 Concen: 5.51 ug/l
 RT: 15.13 min Scan# 4212
 Delta R.T. 0.00 min
 Lab File: VN050839.D
 Acq: 23 Aug 2018 9:26

Tgt Ion	Resp	Lower	Upper
128	1505		
127	0.0	10.5	15.7#
129	7.8	8.7	13.1#





#96
 1,2,3-Trichlorobenzene
 Concen: 3.36 ug/l
 RT: 15.31 min Scan# 4266
 Delta R.T. -0.01 min
 Lab File: VN050839.D
 Acq: 23 Aug 2018 9:26

Instrument : MSVOA_N
 ClientSampled :

Tot Ion	180	182	145	Resp	Lower	Upper
362	100	129.8	0.0		48.0	144.2
					15.2	45.6#

