

Data Path : Z:\voasrv\HPCHEM1\MSVOA\_N\Data\VN082321\  
 Data File : VN068268.D  
 Acq On : 23 Aug 2021 14:54  
 Operator : JC/MD  
 Sample : M3502-02  
 Misc : 5.00mL/MSVOA\_N/WATER  
 ALS Vial : 11 Sample Multiplier: 1

Instrument :  
 MSVOA\_N  
 ClientSampled :

Quant Time: Aug 24 03:54:12 2021  
 Quant Method : Z:\voasrv\HPCHEM1\MSVOA\_N\methods\82N081721W.M  
 Quant Title : SW846 8260  
 QLast Update : Tue Aug 17 13:09:49 2021  
 Response via : Initial Calibration

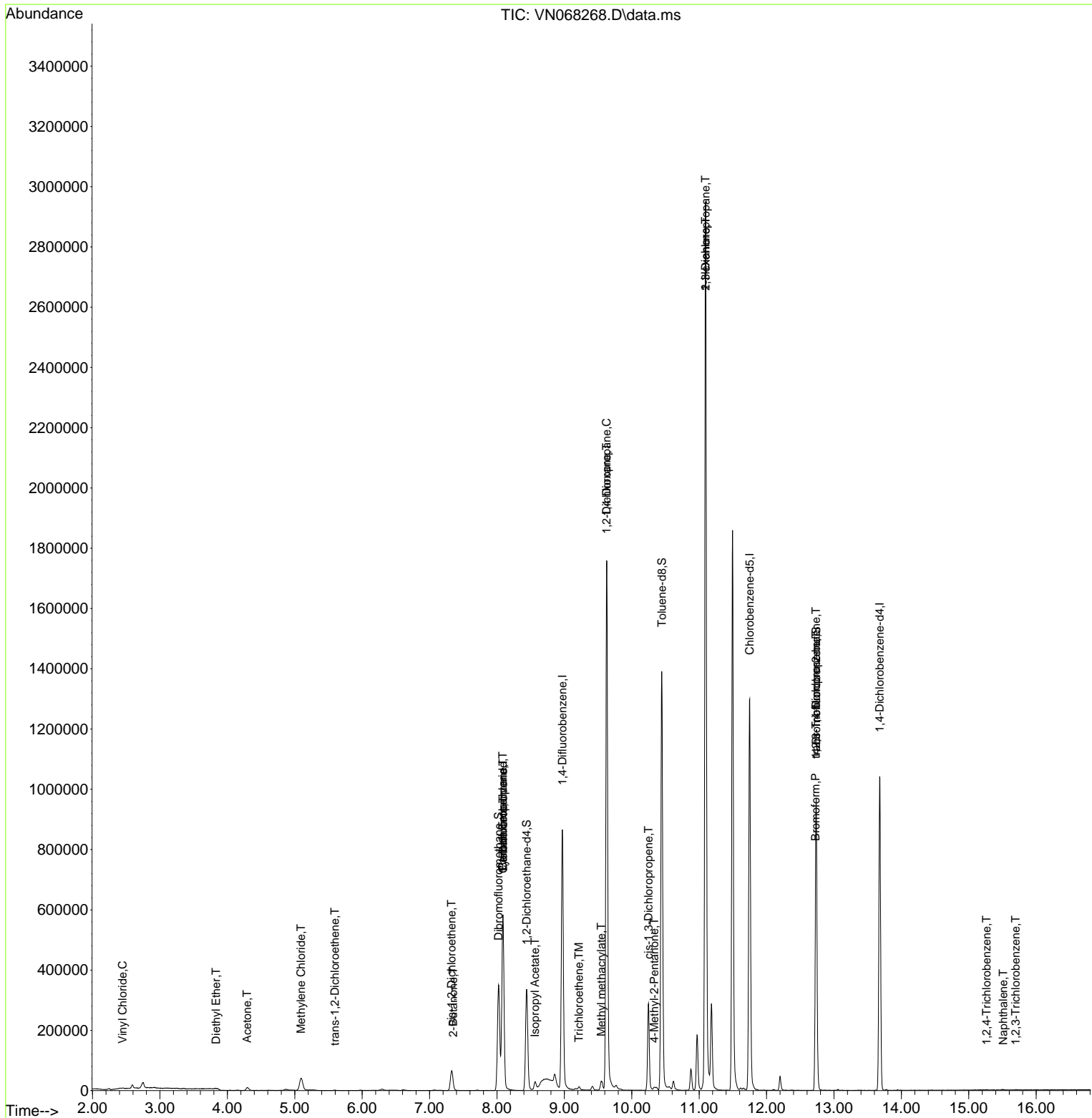
Compound	R.T.	QIon	Response	Conc	Units	Dev(Min)
-----						
Internal Standards						
1) Pentafluorobenzene	8.088	168	487911	50.000	ug/l	# 0.00
34) 1,4-Difluorobenzene	8.971	114	827881	50.000	ug/l	0.00
63) Chlorobenzene-d5	11.749	117	852983	50.000	ug/l	# 0.00
72) 1,4-Dichlorobenzene-d4	13.678	152	312257	50.000	ug/l	0.00
System Monitoring Compounds						
33) 1,2-Dichloroethane-d4	8.440	65	286240	54.945	ug/l	0.00
Spiked Amount	50.000	Range 61 - 141	Recovery	=	109.900%	
35) Dibromofluoromethane	8.024	113	257946	49.627	ug/l	0.00
Spiked Amount	50.000	Range 69 - 133	Recovery	=	99.260%	
50) Toluene-d8	10.446	98	1035080	52.264	ug/l	0.00
Spiked Amount	50.000	Range 65 - 126	Recovery	=	104.520%	
62) 4-Bromofluorobenzene	12.736	95	328649	49.848	ug/l	0.00
Spiked Amount	50.000	Range 58 - 135	Recovery	=	99.700%	
Target Compounds						
						Qvalue
4) Vinyl Chloride	2.445	62	1372	0.200	ug/l	# 88
5) Bromomethane	2.834	94	55	Below Cal		# 4
6) Chloroethane	2.896	64	51	Below Cal		# 44
8) Diethyl Ether	3.832	74	634	0.203	ug/l	55
13) Acrolein	4.039	56	208	Below Cal		93
16) Acetone	4.293	43	17352	11.408	ug/l	# 89
18) Methyl Acetate	4.870	43	7684	Below Cal		# 84
20) Methylene Chloride	5.093	84	35780	6.659	ug/l	# 81
21) trans-1,2-Dichloroethene	5.594	96	909	0.205	ug/l	# 41
25) 2-Butanone	7.351	43	3278	1.383	ug/l	97
27) cis-1,2-Dichloroethene	7.327	96	44261	8.348	ug/l	68
31) Cyclohexane	8.091	56	8552	1.246	ug/l	# 13
36) 1,1-Dichloropropene	8.091	75	31409	4.641	ug/l	# 49
38) Carbon Tetrachloride	8.088	117	45010	5.766	ug/l	# 16
43) Isopropyl Acetate	8.566	43	34155	3.698	ug/l	# 89
44) Trichloroethene	9.215	130	4015	0.646	ug/l	74
45) 1,2-Dichloropropane	9.625	63	2295	0.472	ug/l	# 44
48) Methyl methacrylate	9.547	41	8349	2.169	ug/l	# 12
49) 1,4-Dioxane	9.628	88	298	3.203	ug/l	# 1
51) 4-Methyl-2-Pentanone	10.333	43	6221	1.097	ug/l	95
54) cis-1,3-Dichloropropene	10.247	75	56997	7.272	ug/l	# 57
57) 1,3-Dichloropropane	11.095	76	34476	3.978	ug/l	# 43
59) 2-Hexanone	11.095	43	429996	109.159	ug/l	# 57
71) Bromoform	12.725	173	1162	0.220	ug/l	# 1
76) 1,2,3-Trichloropropane	12.733	75	167287	32.232	ug/l	# 100
81) trans-1,4-Dichloro-2-b...	12.733	75	167287	105.599	ug/l	# 6
93) 1,2,4-Trichlorobenzene	15.265	180	586	2.791	ug/l	# 70
95) Naphthalene	15.509	128	2446	3.531	ug/l	# 76
96) 1,2,3-Trichlorobenzene	15.697	180	340	2.896	ug/l	# 59
-----						

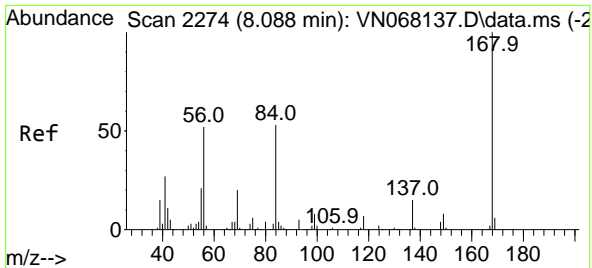
(#) = qualifier out of range (m) = manual integration (+) = signals summed

Data Path : Z:\voasrv\HPCHEM1\MSVOA\_N\Data\VN082321\  
 Data File : VN068268.D  
 Acq On : 23 Aug 2021 14:54  
 Operator : JC/MD  
 Sample : M3502-02  
 Misc : 5.00mL/MSVOA\_N/WATER  
 ALS Vial : 11 Sample Multiplier: 1

Instrument :  
 MSVOA\_N  
 ClientSampled :

Quant Time: Aug 24 03:54:12 2021  
 Quant Method : Z:\voasrv\HPCHEM1\MSVOA\_N\methods\82N081721W.M  
 Quant Title : SW846 8260  
 QLast Update : Tue Aug 17 13:09:49 2021  
 Response via : Initial Calibration

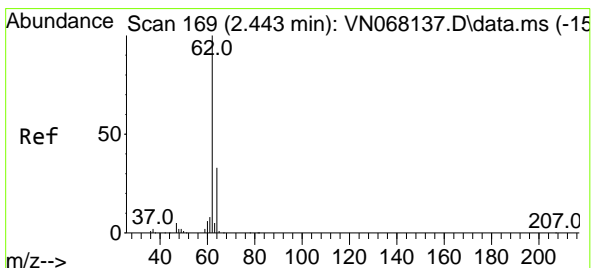
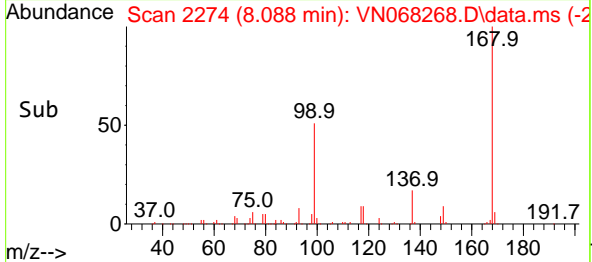
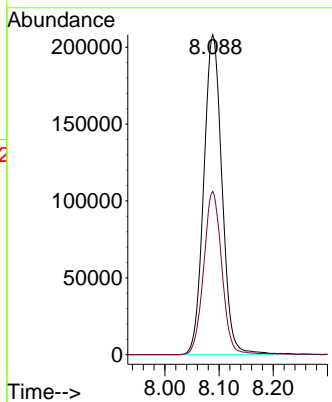
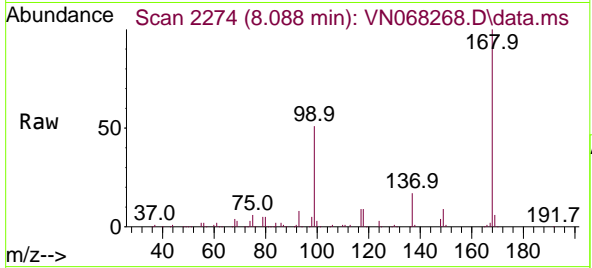




#1  
 Pentafluorobenzene  
 Concen: 50.000 ug/l  
 RT: 8.088 min Scan# 2274  
 Delta R.T. 0.000 min  
 Lab File: VN068268.D  
 Acq: 23 Aug 2021 14:54

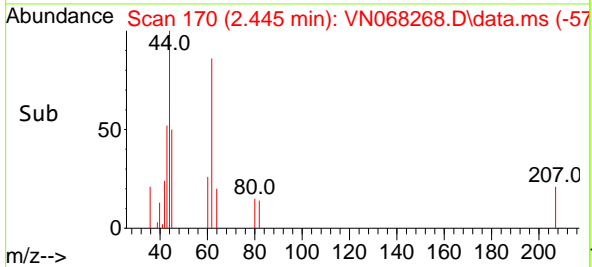
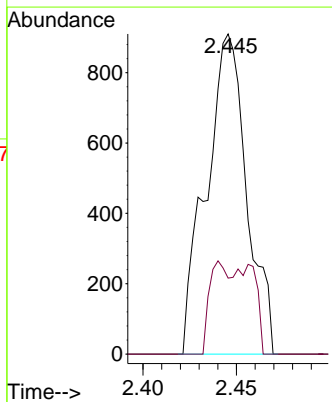
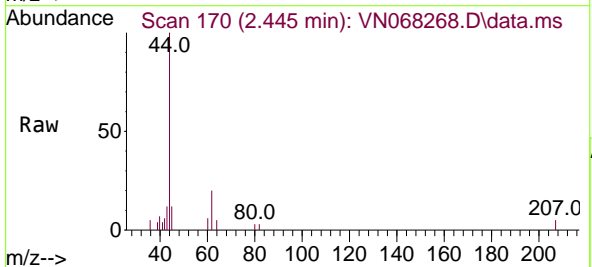
Instrument :  
 MSVOA\_N  
 ClientSampled :

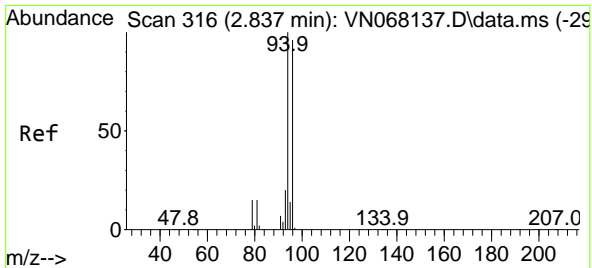
Tgt Ion:168 Resp: 487911  
 Ion Ratio Lower Upper  
 168 100  
 99 51.0 62.9 94.3#



#4  
 Vinyl Chloride  
 Concen: 0.200 ug/l  
 RT: 2.445 min Scan# 170  
 Delta R.T. 0.002 min  
 Lab File: VN068268.D  
 Acq: 23 Aug 2021 14:54

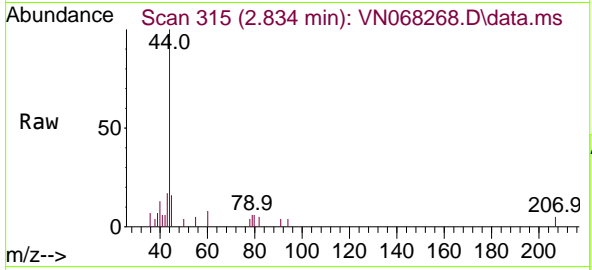
Tgt Ion: 62 Resp: 1372  
 Ion Ratio Lower Upper  
 62 100  
 64 23.7 24.4 36.6#



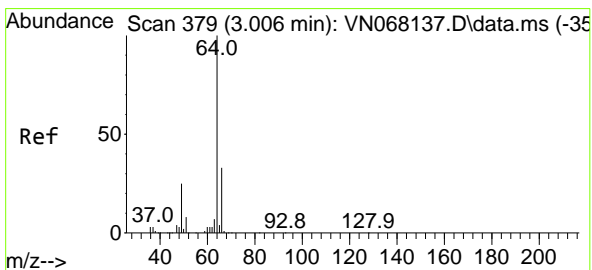
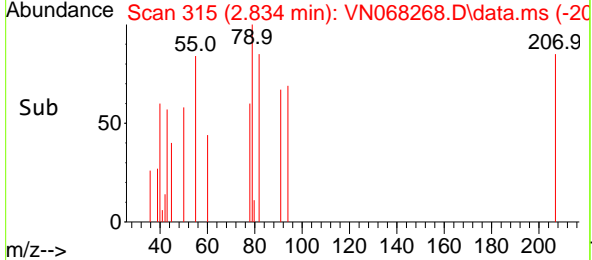
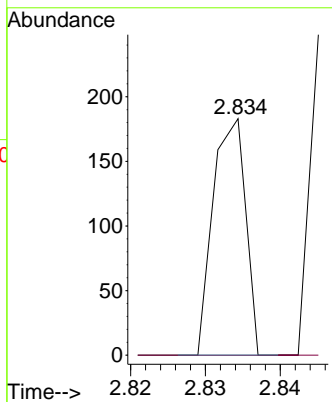


#5  
 Bromomethane  
 Concen: Below Cal  
 RT: 2.834 min Scan# 315  
 Delta R.T. -0.003 min  
 Lab File: VN068268.D  
 Acq: 23 Aug 2021 14:54

Instrument :  
 MSVOA\_N  
 ClientSampled :

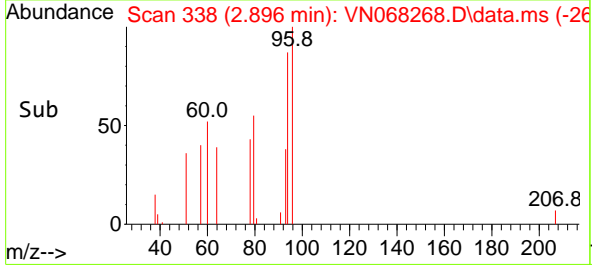
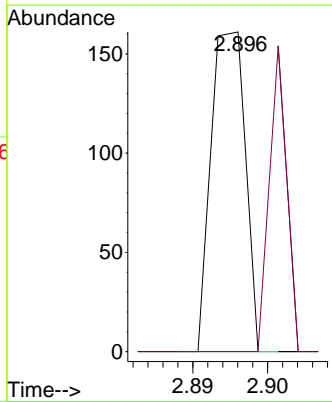
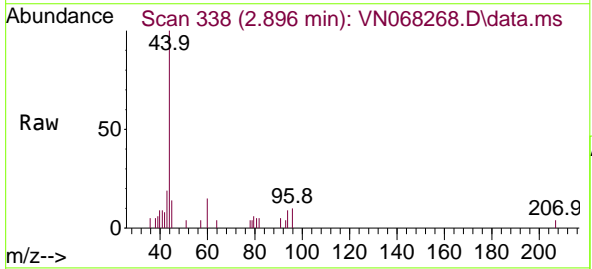


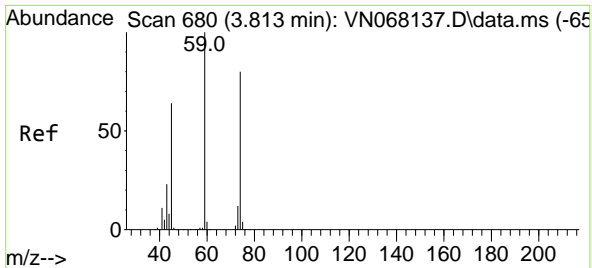
Tgt Ion: 94 Resp: 55  
 Ion Ratio Lower Upper  
 94 100  
 96 0.0 73.7 110.5#



#6  
 Chloroethane  
 Concen: Below Cal  
 RT: 2.896 min Scan# 338  
 Delta R.T. -0.110 min  
 Lab File: VN068268.D  
 Acq: 23 Aug 2021 14:54

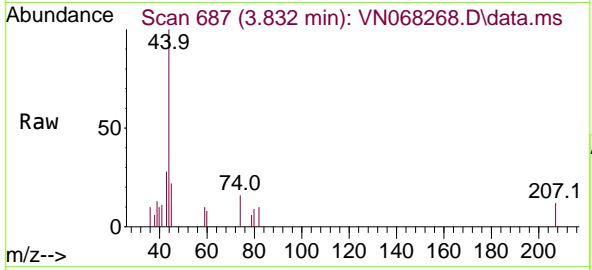
Tgt Ion: 64 Resp: 51  
 Ion Ratio Lower Upper  
 64 100  
 66 0.0 24.7 37.1#



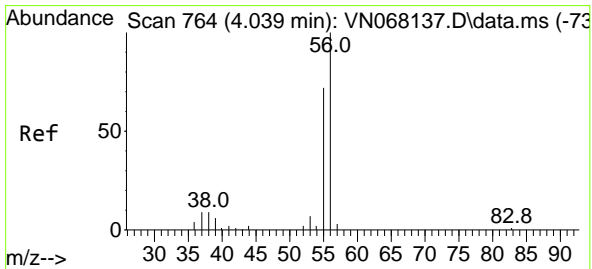
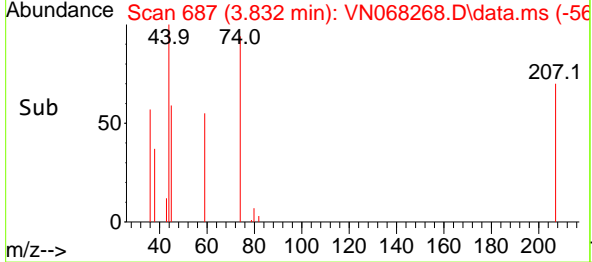
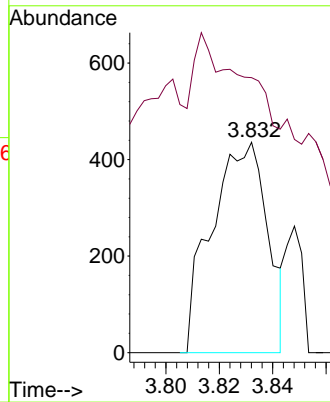


#8  
 Diethyl Ether  
 Concen: 0.203 ug/l  
 RT: 3.832 min Scan# 687  
 Delta R.T. 0.019 min  
 Lab File: VN068268.D  
 Acq: 23 Aug 2021 14:54

Instrument :  
 MSVOA\_N  
 ClientSampled :

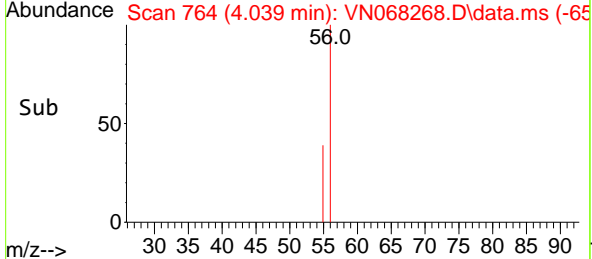
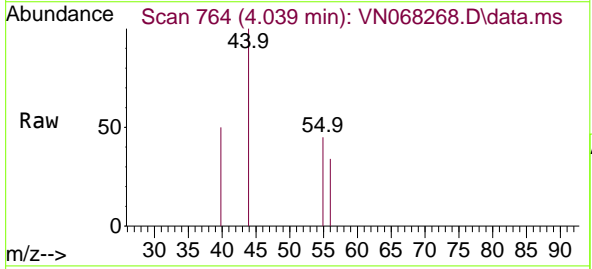
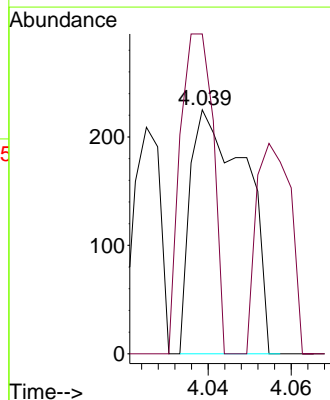


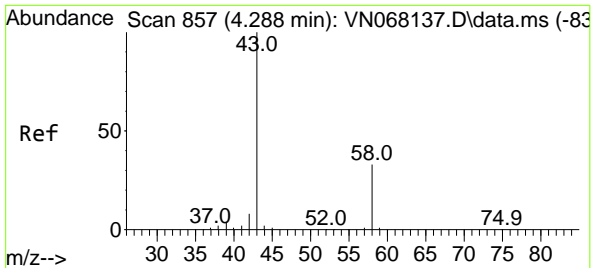
Tgt Ion: 74 Resp: 634  
 Ion Ratio Lower Upper  
 74 100  
 45 145.6 50.2 150.7



#13  
 Acrolein  
 Concen: Below Cal  
 RT: 4.039 min Scan# 764  
 Delta R.T. -0.000 min  
 Lab File: VN068268.D  
 Acq: 23 Aug 2021 14:54

Tgt Ion: 56 Resp: 208  
 Ion Ratio Lower Upper  
 56 100  
 55 77.9 57.4 86.0

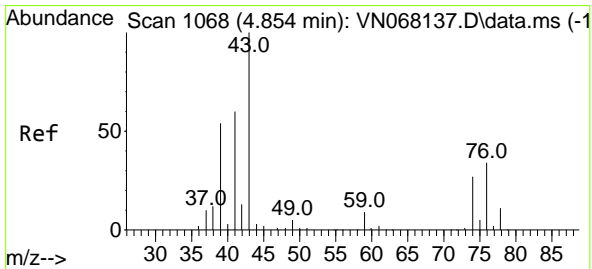
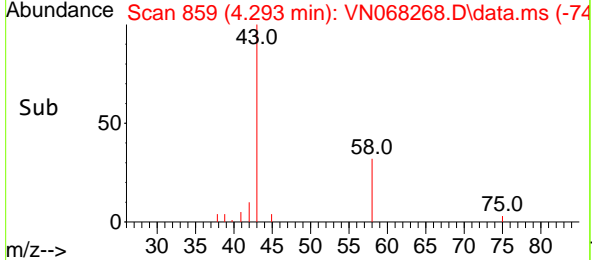
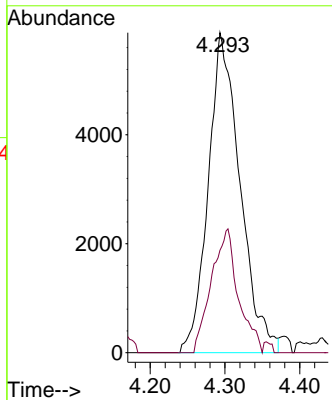
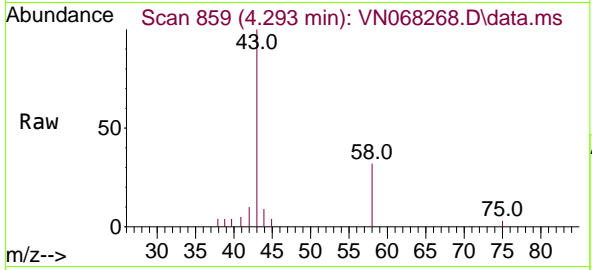




#16  
 Acetone  
 Concen: 11.408 ug/l  
 RT: 4.293 min Scan# 859  
 Delta R.T. 0.005 min  
 Lab File: VN068268.D  
 Acq: 23 Aug 2021 14:54

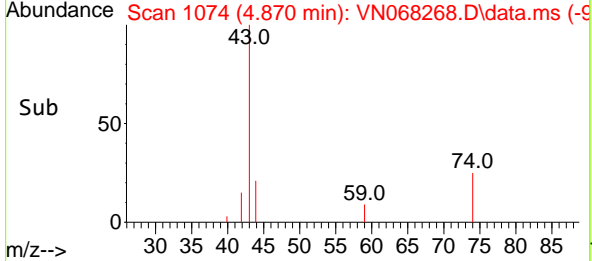
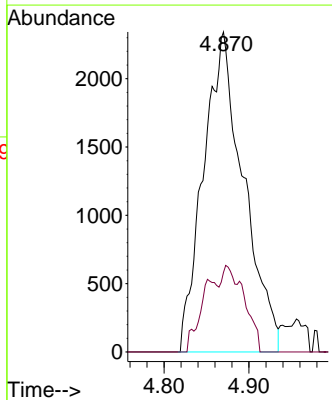
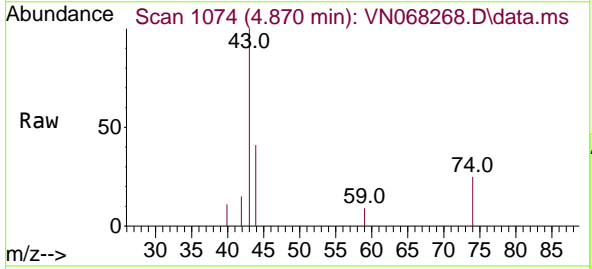
Instrument :  
 MSVOA\_N  
 ClientSampled :

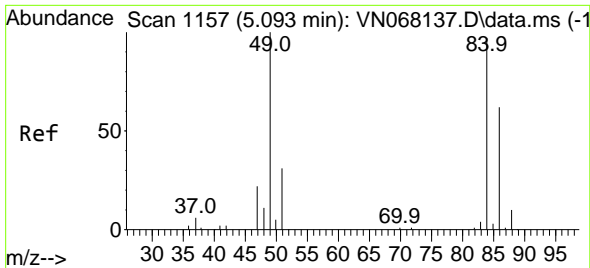
Tgt Ion: 43 Resp: 17352  
 Ion Ratio Lower Upper  
 43 100  
 58 32.0 21.2 31.8#



#18  
 Methyl Acetate  
 Concen: Below Cal  
 RT: 4.870 min Scan# 1074  
 Delta R.T. 0.016 min  
 Lab File: VN068268.D  
 Acq: 23 Aug 2021 14:54

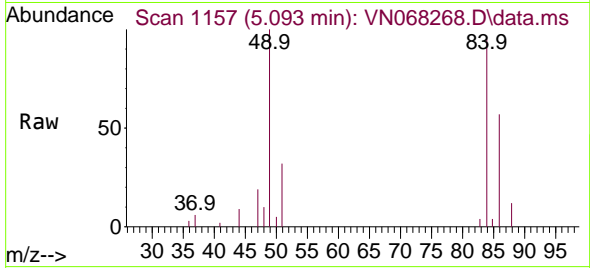
Tgt Ion: 43 Resp: 7684  
 Ion Ratio Lower Upper  
 43 100  
 74 14.3 17.4 26.0#





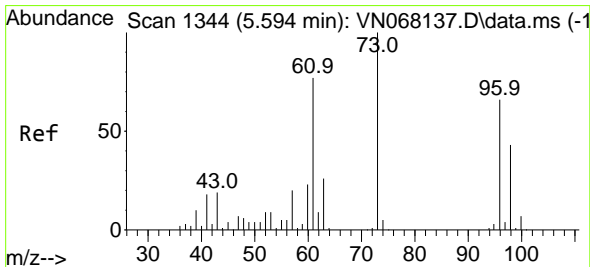
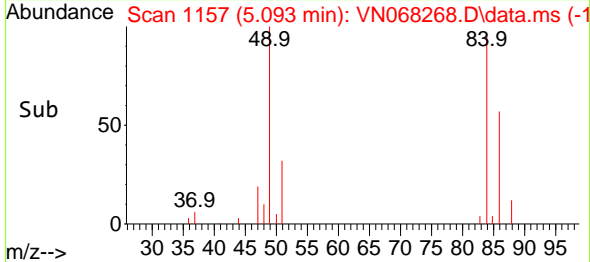
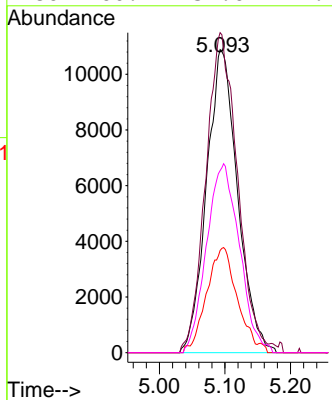
#20  
 Methylene Chloride  
 Concen: 6.659 ug/l  
 RT: 5.093 min Scan# 1157  
 Delta R.T. -0.000 min  
 Lab File: VN068268.D  
 Acq: 23 Aug 2021 14:54

Instrument :  
 MSVOA\_N  
 ClientSampled :

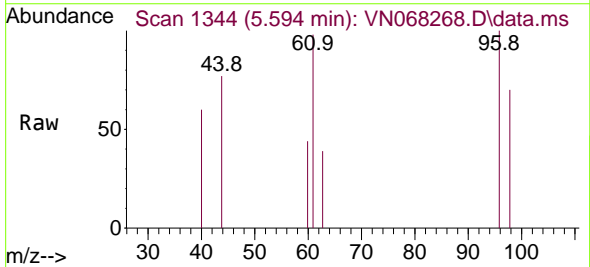


Tgt Ion: 84 Resp: 35780

Ion	Ratio	Lower	Upper
84	100		
49	105.6	110.9	166.3#
51	33.7	32.6	49.0
86	60.1	51.6	77.4

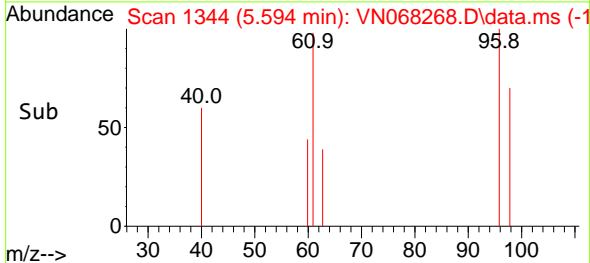
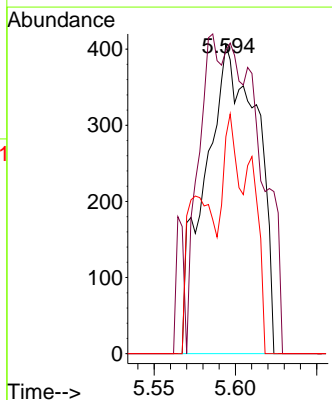


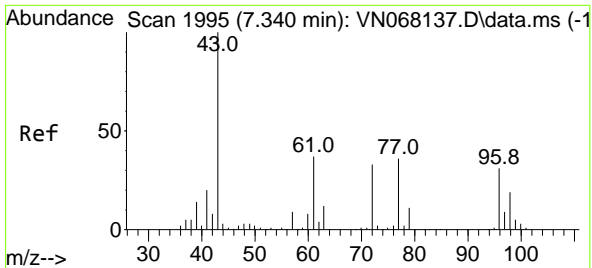
#21  
 trans-1,2-Dichloroethene  
 Concen: 0.205 ug/l  
 RT: 5.594 min Scan# 1344  
 Delta R.T. 0.000 min  
 Lab File: VN068268.D  
 Acq: 23 Aug 2021 14:54



Tgt Ion: 96 Resp: 909

Ion	Ratio	Lower	Upper
96	100		
61	53.7	123.5	185.3#
98	70.2	48.6	72.8

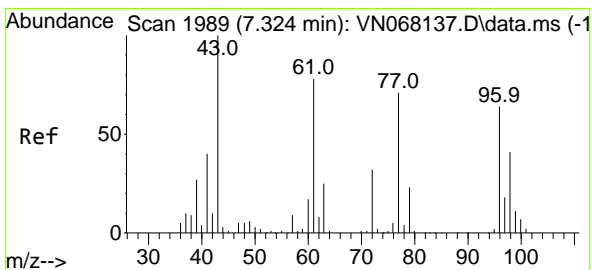
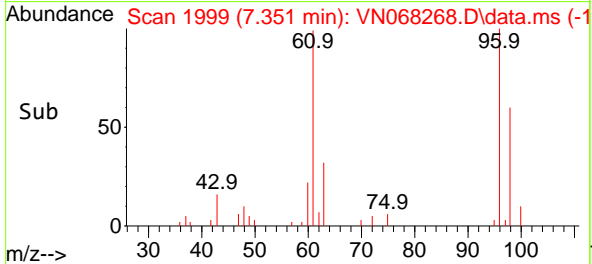
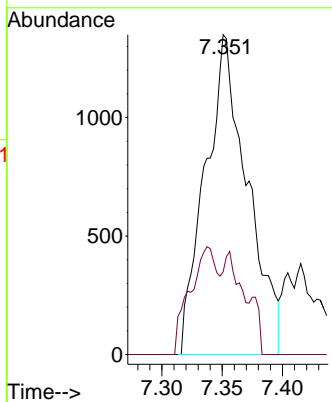
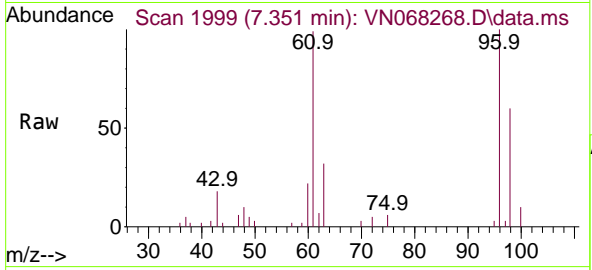




#25  
 2-Butanone  
 Concen: 1.383 ug/l  
 RT: 7.351 min Scan# 1999  
 Delta R.T. 0.011 min  
 Lab File: VN068268.D  
 Acq: 23 Aug 2021 14:54

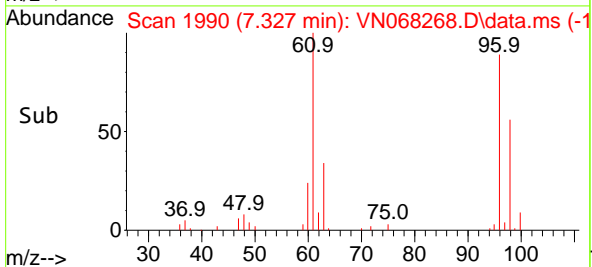
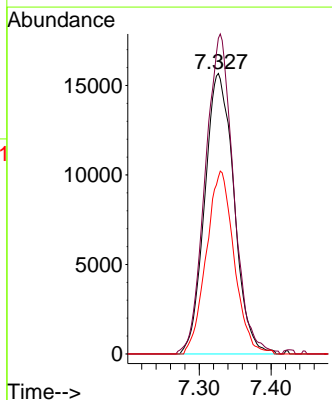
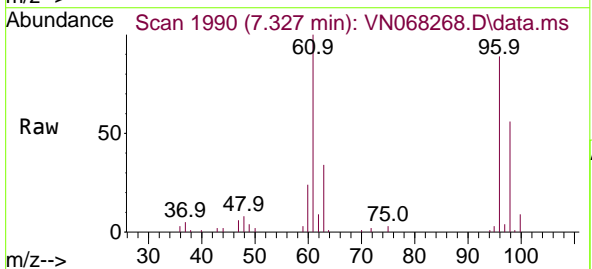
Instrument :  
 MSVOA\_N  
 ClientSampled :

Tgt Ion: 43 Resp: 3278  
 Ion Ratio Lower Upper  
 43 100  
 72 25.9 19.7 29.5

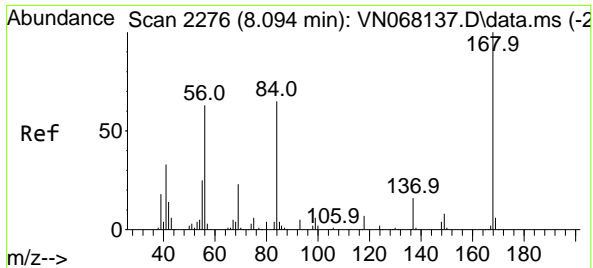


#27  
 cis-1,2-Dichloroethene  
 Concen: 8.348 ug/l  
 RT: 7.327 min Scan# 1990  
 Delta R.T. 0.003 min  
 Lab File: VN068268.D  
 Acq: 23 Aug 2021 14:54

Tgt Ion: 96 Resp: 44261  
 Ion Ratio Lower Upper  
 96 100  
 61 110.3 0.0 338.8  
 98 62.0 0.0 129.8



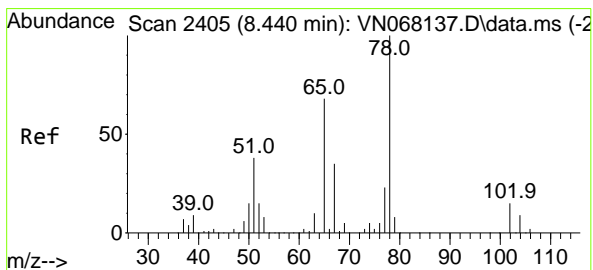
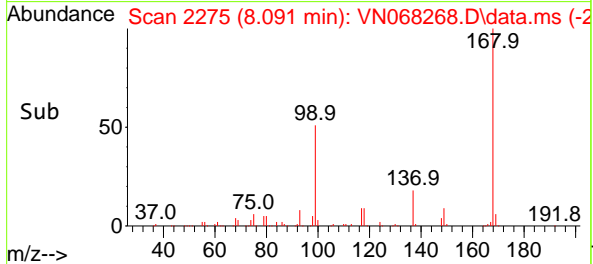
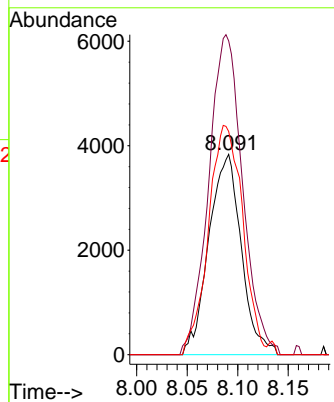
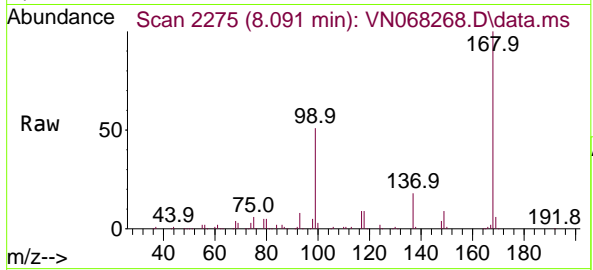




#31  
 Cyclohexane  
 Concen: 1.246 ug/l  
 RT: 8.091 min Scan# 2275  
 Delta R.T. -0.003 min  
 Lab File: VN068268.D  
 Acq: 23 Aug 2021 14:54

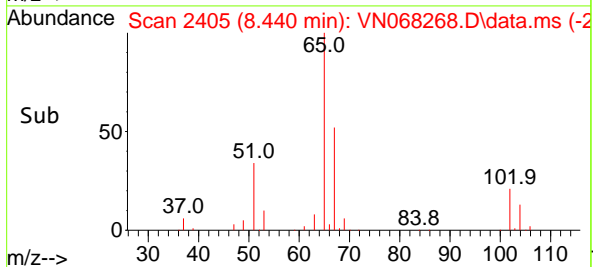
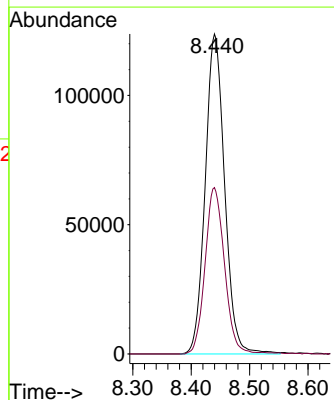
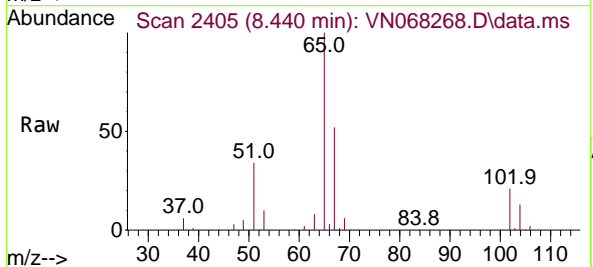
Instrument :  
 MSVOA\_N  
 ClientSampled :

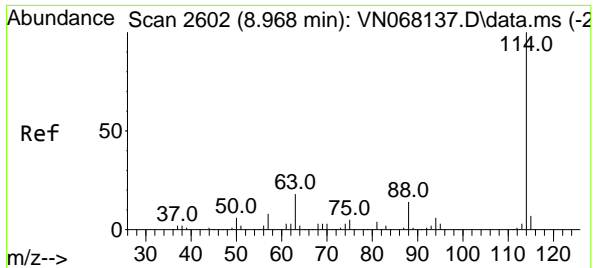
Tgt Ion	Resp	Lower	Upper
56	8552		
69	156.7	27.3	40.9#
84	111.5	64.9	97.3#



#33  
 1,2-Dichloroethane-d4  
 Concen: 54.945 ug/l  
 RT: 8.440 min Scan# 2405  
 Delta R.T. -0.000 min  
 Lab File: VN068268.D  
 Acq: 23 Aug 2021 14:54

Tgt Ion	Resp	Lower	Upper
65	286240		
67	51.9	0.0	98.6

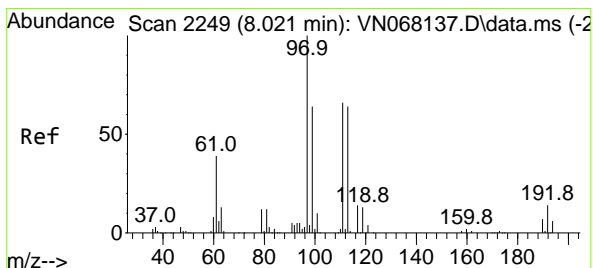
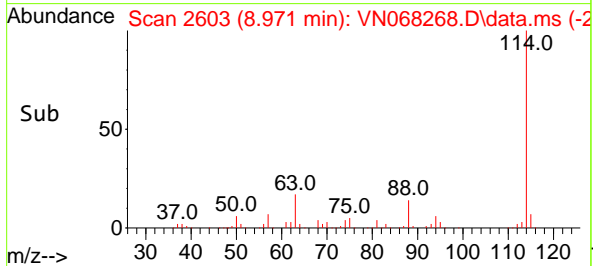
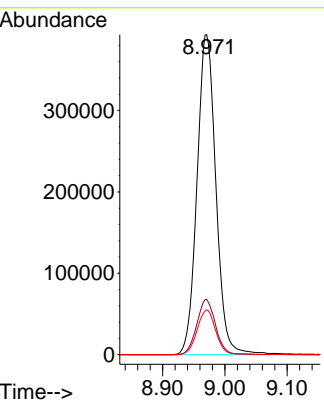
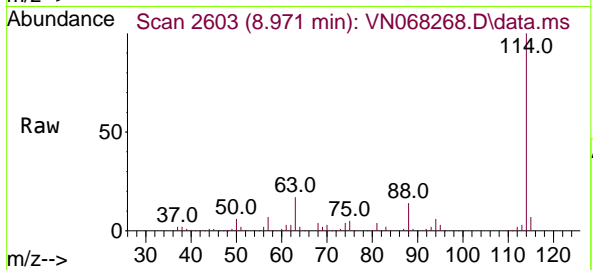




#34  
 1,4-Difluorobenzene  
 Concen: 50.000 ug/l  
 RT: 8.971 min Scan# 2603  
 Delta R.T. 0.003 min  
 Lab File: VN068268.D  
 Acq: 23 Aug 2021 14:54

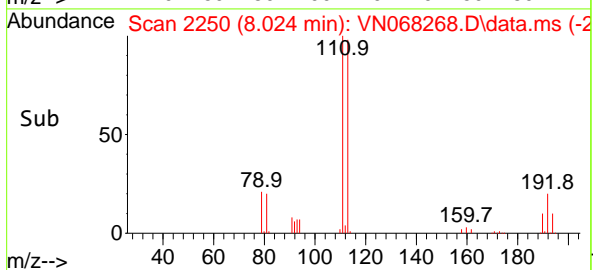
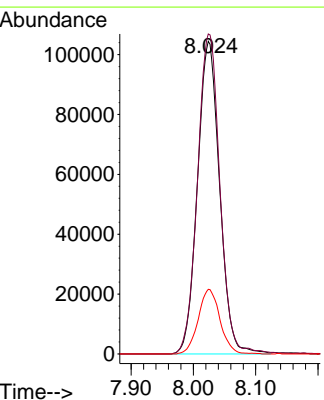
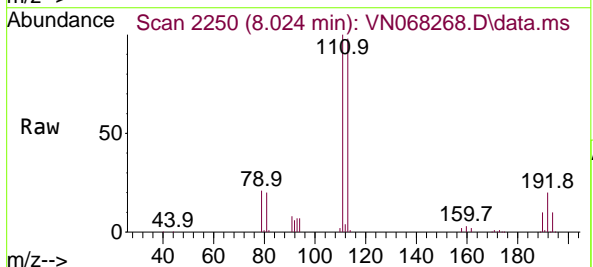
Instrument :  
 MSVOA\_N  
 ClientSampled :

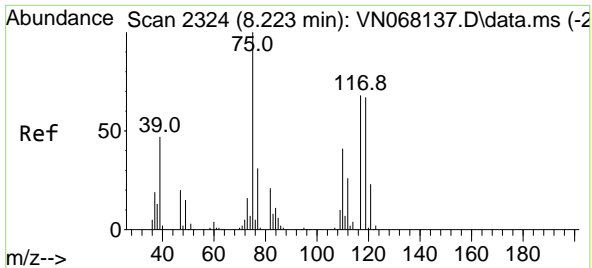
Tgt Ion	Resp	Lower	Upper
114	100		
63	17.3	0.0	49.0
88	14.0	0.0	36.6



#35  
 Dibromofluoromethane  
 Concen: 49.627 ug/l  
 RT: 8.024 min Scan# 2250  
 Delta R.T. 0.003 min  
 Lab File: VN068268.D  
 Acq: 23 Aug 2021 14:54

Tgt Ion	Resp	Lower	Upper
113	100		
111	102.3	83.8	125.8
192	20.3	13.4	20.0#

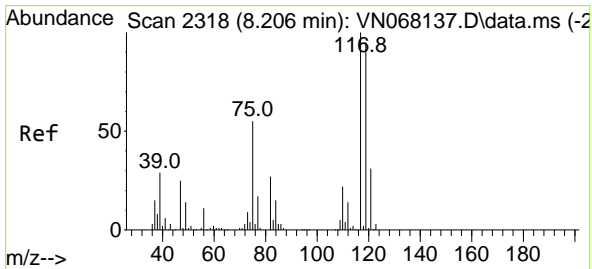
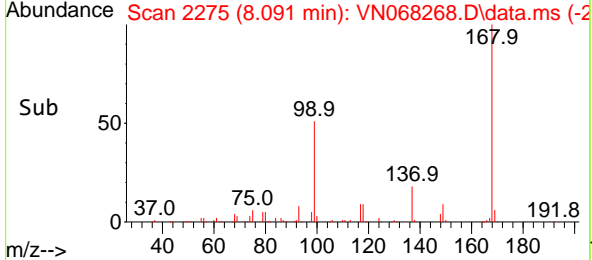
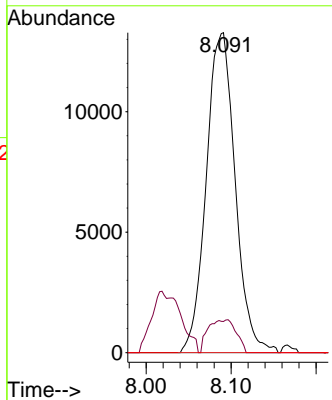
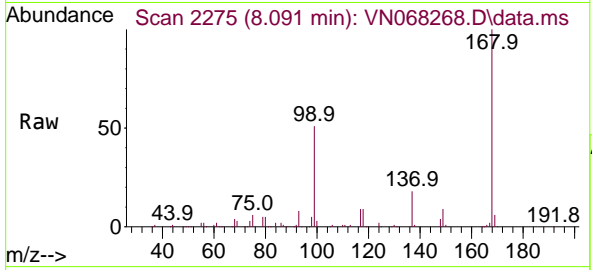




#36  
 1,1-Dichloropropene  
 Concen: 4.641 ug/l  
 RT: 8.091 min Scan# 2275  
 Delta R.T. -0.132 min  
 Lab File: VN068268.D  
 Acq: 23 Aug 2021 14:54

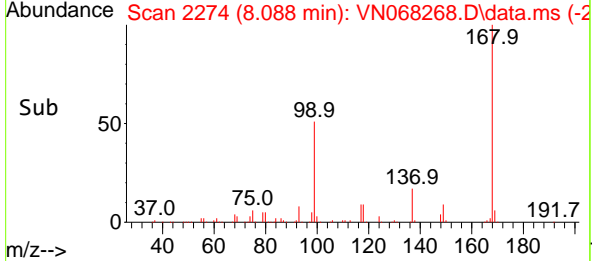
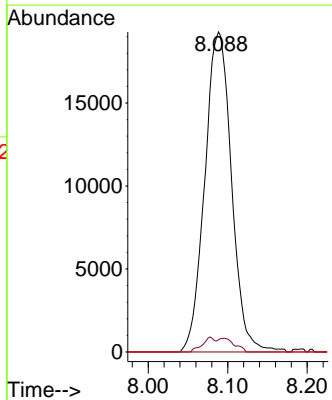
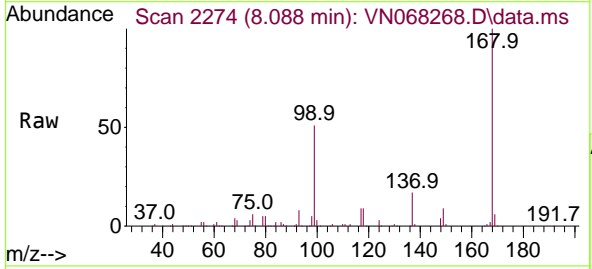
Instrument :  
 MSVOA\_N  
 ClientSampled :

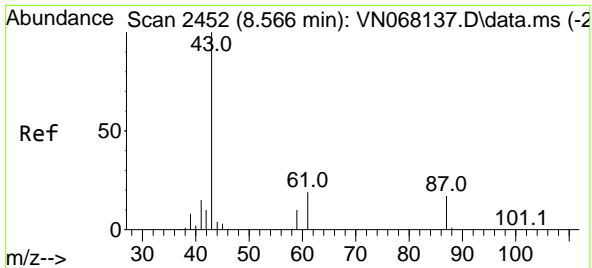
Tgt Ion	Resp	Lower	Upper
75	31409		
75	100		
110	5.8	15.7	47.0#
77	0.0	24.6	37.0#



#38  
 Carbon Tetrachloride  
 Concen: 5.766 ug/l  
 RT: 8.088 min Scan# 2274  
 Delta R.T. -0.118 min  
 Lab File: VN068268.D  
 Acq: 23 Aug 2021 14:54

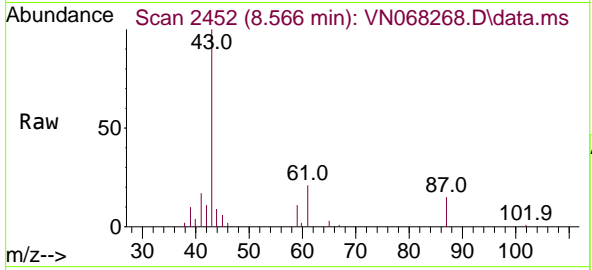
Tgt Ion	Resp	Lower	Upper
117	45010		
117	100		
119	3.8	75.4	113.2#
121	0.0	23.5	35.3#



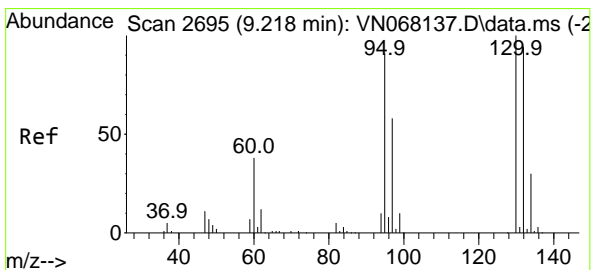
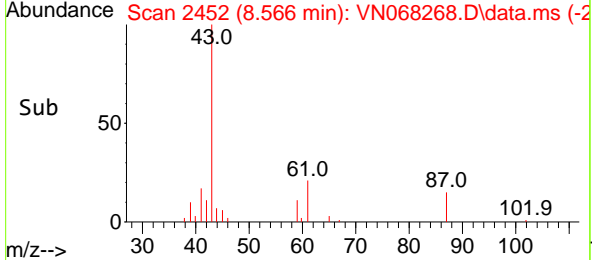
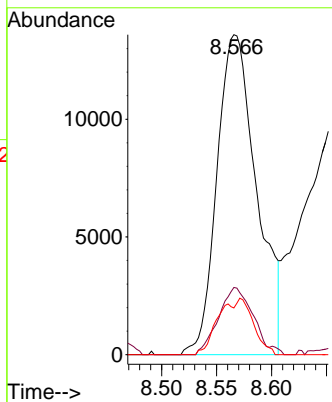


#43  
 Isopropyl Acetate  
 Concen: 3.698 ug/l  
 RT: 8.566 min Scan# 2452  
 Delta R.T. -0.000 min  
 Lab File: VN068268.D  
 Acq: 23 Aug 2021 14:54

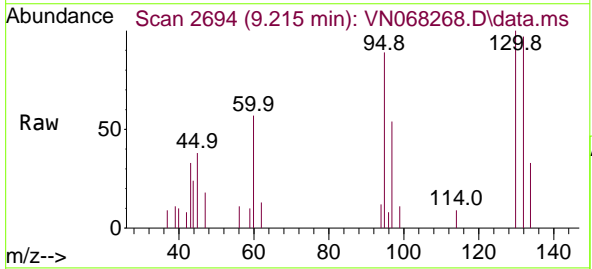
Instrument :  
 MSVOA\_N  
 ClientSampled :



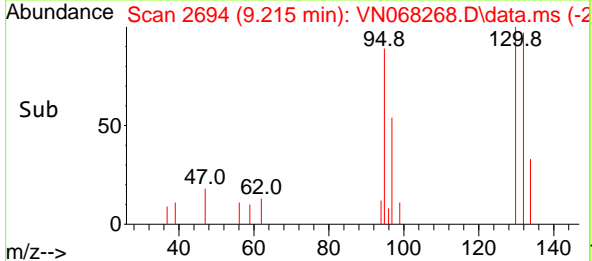
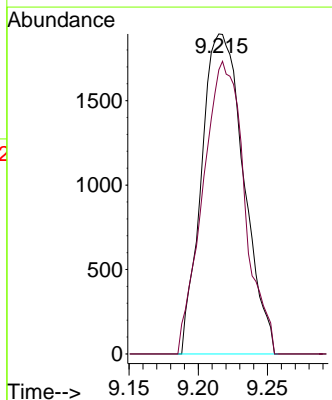
Tgt Ion: 43 Resp: 34155  
 Ion Ratio Lower Upper  
 43 100  
 61 18.4 19.0 28.4#  
 87 7.7 9.5 14.3#

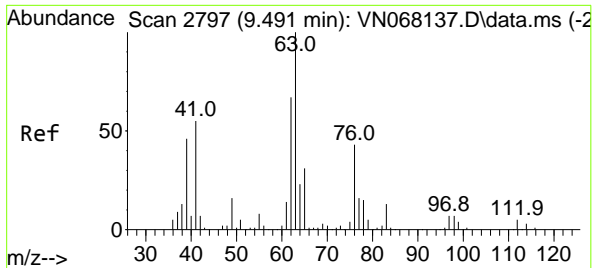


#44  
 Trichloroethene  
 Concen: 0.646 ug/l  
 RT: 9.215 min Scan# 2694  
 Delta R.T. -0.003 min  
 Lab File: VN068268.D  
 Acq: 23 Aug 2021 14:54



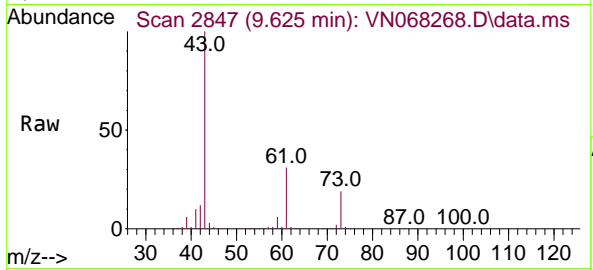
Tgt Ion:130 Resp: 4015  
 Ion Ratio Lower Upper  
 130 100  
 95 88.8 0.0 234.4



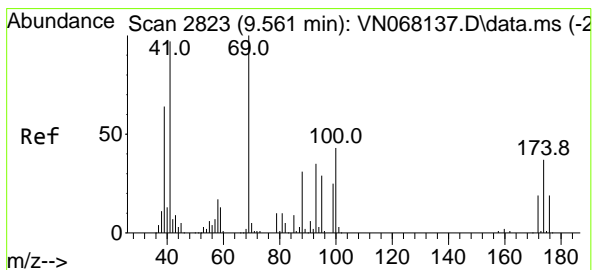
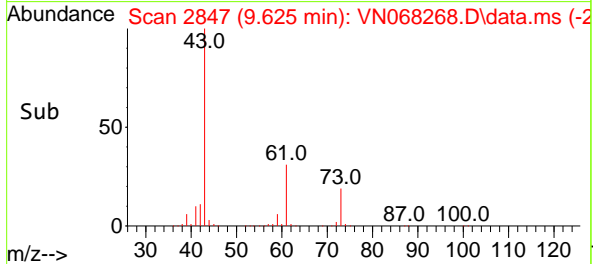
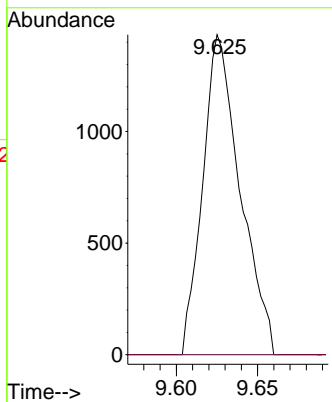


#45  
 1,2-Dichloropropane  
 Concen: 0.472 ug/l  
 RT: 9.625 min Scan# 2847  
 Delta R.T. 0.134 min  
 Lab File: VN068268.D  
 Acq: 23 Aug 2021 14:54

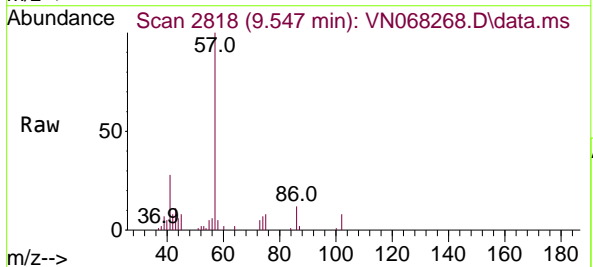
Instrument :  
 MSVOA\_N  
 ClientSampled :



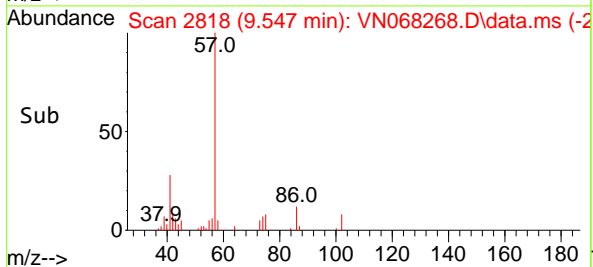
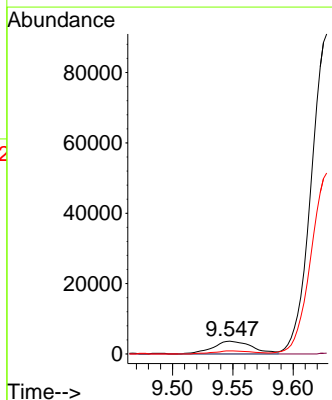
Tgt Ion: 63 Resp: 2295  
 Ion Ratio Lower Upper  
 63 100  
 65 0.0 24.3 36.5#

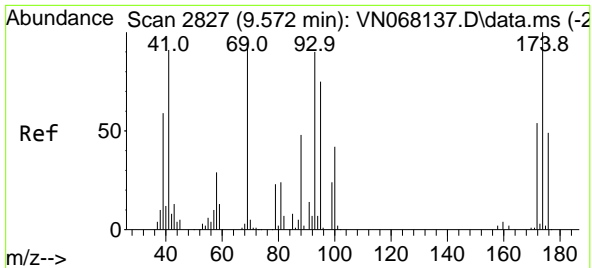


#48  
 Methyl methacrylate  
 Concen: 2.169 ug/l  
 RT: 9.547 min Scan# 2818  
 Delta R.T. -0.014 min  
 Lab File: VN068268.D  
 Acq: 23 Aug 2021 14:54



Tgt Ion: 41 Resp: 8349  
 Ion Ratio Lower Upper  
 41 100  
 69 0.0 64.6 96.8#  
 39 0.0 53.3 79.9#

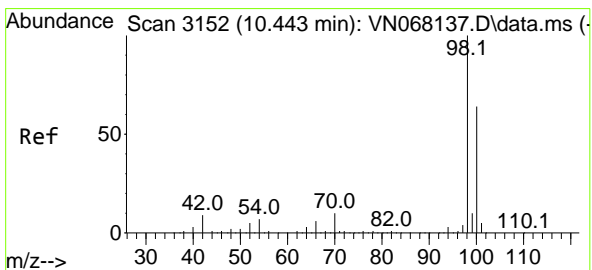
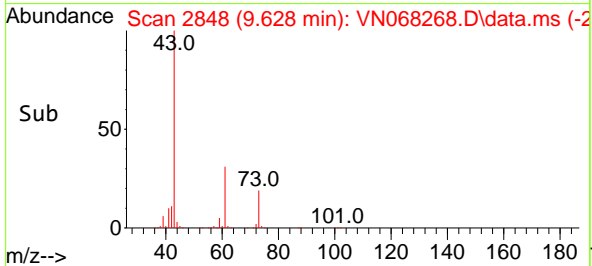
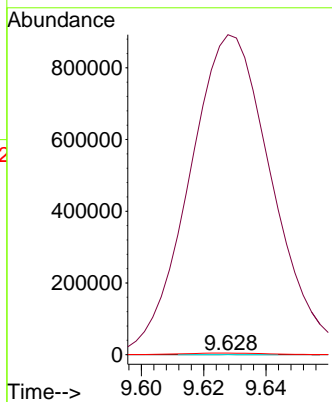
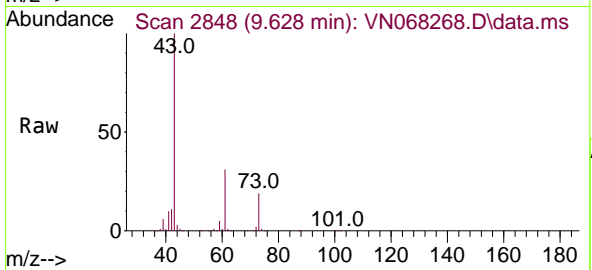




#49  
 1,4-Dioxane  
 Concen: 3.203 ug/l  
 RT: 9.628 min Scan# 2848  
 Delta R.T. 0.056 min  
 Lab File: VN068268.D  
 Acq: 23 Aug 2021 14:54

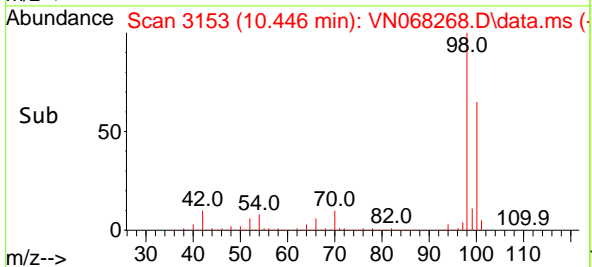
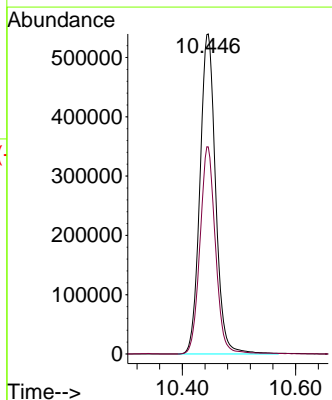
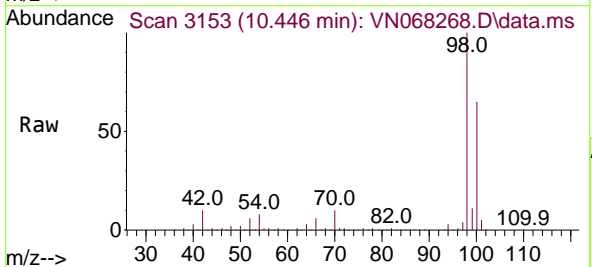
Instrument :  
 MSVOA\_N  
 ClientSampled :

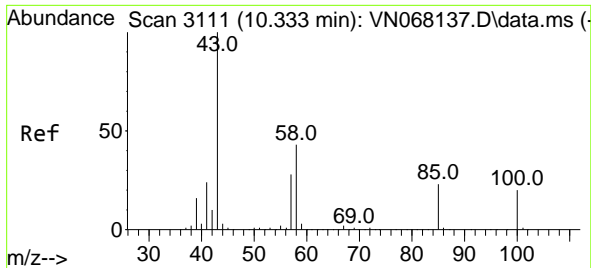
Tgt Ion: 88 Resp: 298  
 Ion Ratio Lower Upper  
 88 100  
 43 572385.6 28.8 43.2#  
 58 3037.6 60.4 90.6#



#50  
 Toluene-d8  
 Concen: 52.264 ug/l  
 RT: 10.446 min Scan# 3153  
 Delta R.T. 0.003 min  
 Lab File: VN068268.D  
 Acq: 23 Aug 2021 14:54

Tgt Ion: 98 Resp: 1035080  
 Ion Ratio Lower Upper  
 98 100  
 100 63.9 51.7 77.5

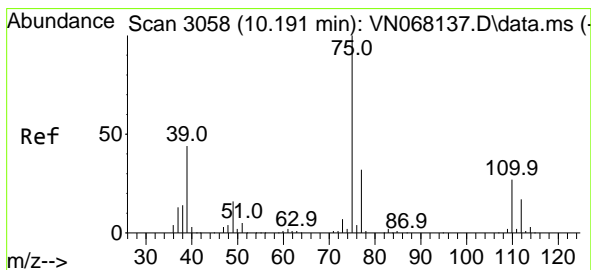
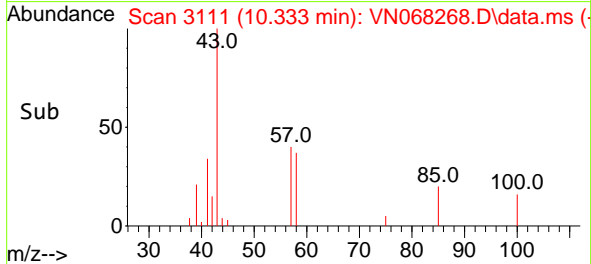
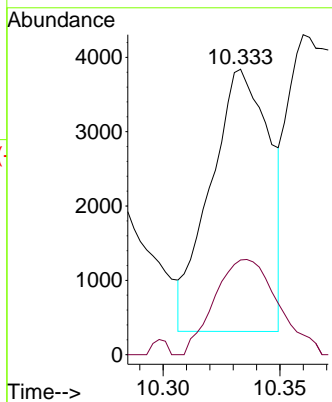
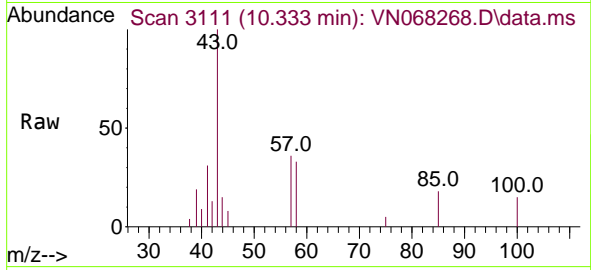




#51  
 4-Methyl-2-Pentanone  
 Concen: 1.097 ug/l  
 RT: 10.333 min Scan# 3111  
 Delta R.T. 0.000 min  
 Lab File: VN068268.D  
 Acq: 23 Aug 2021 14:54

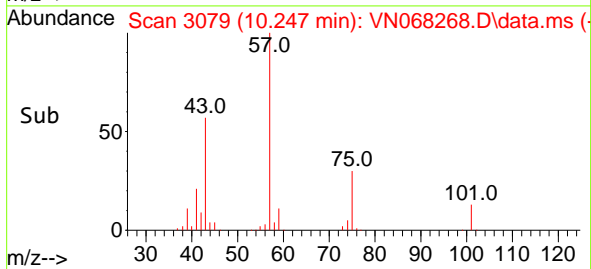
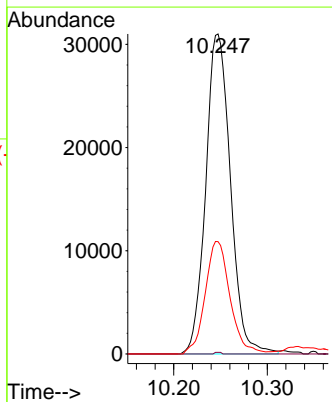
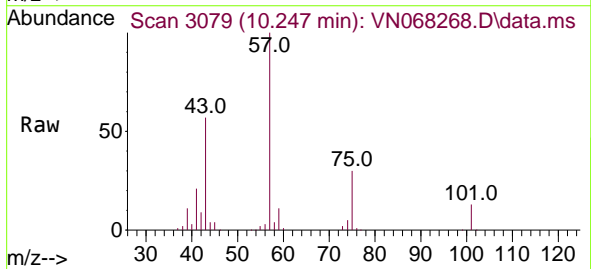
Instrument :  
 MSVOA\_N  
 ClientSampled :

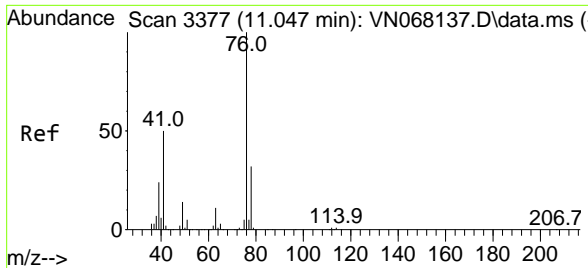
Tgt Ion: 43 Resp: 6221  
 Ion Ratio Lower Upper  
 43 100  
 58 38.9 28.6 43.0



#54  
 cis-1,3-Dichloropropene  
 Concen: 7.272 ug/l  
 RT: 10.247 min Scan# 3079  
 Delta R.T. 0.056 min  
 Lab File: VN068268.D  
 Acq: 23 Aug 2021 14:54

Tgt Ion: 75 Resp: 56997  
 Ion Ratio Lower Upper  
 75 100  
 77 0.5 24.6 37.0#  
 39 35.1 50.7 76.1#

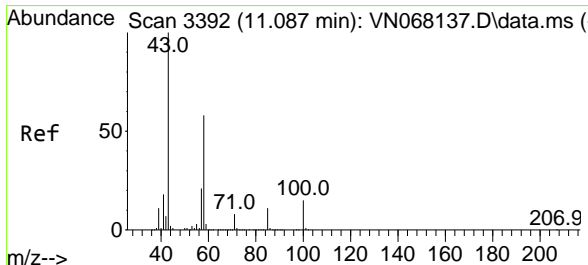
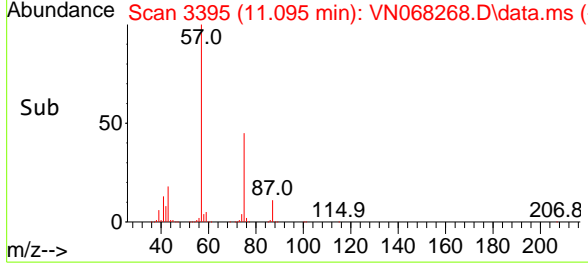
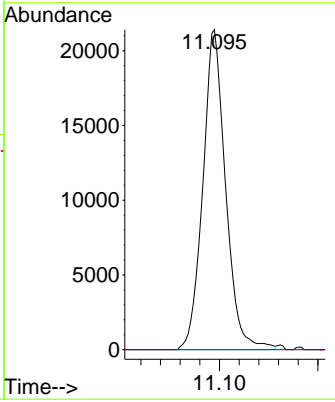
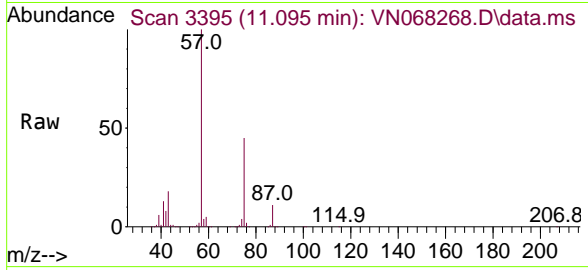




#57  
 1,3-Dichloropropane  
 Concen: 3.978 ug/l  
 RT: 11.095 min Scan# 3395  
 Delta R.T. 0.048 min  
 Lab File: VN068268.D  
 Acq: 23 Aug 2021 14:54

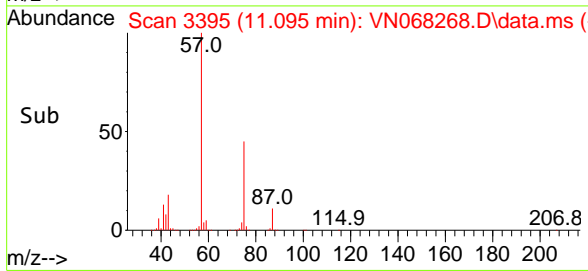
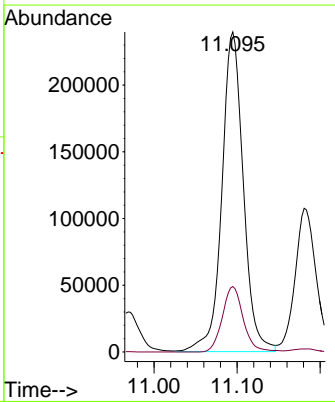
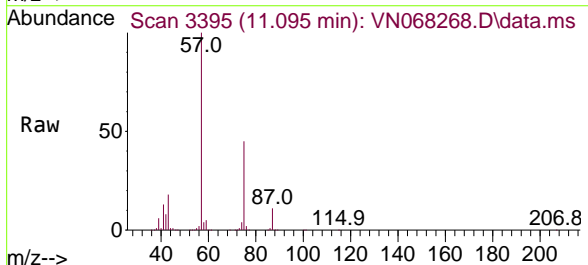
Instrument :  
 MSVOA\_N  
 ClientSampled :

Tgt Ion: 76 Resp: 34476  
 Ion Ratio Lower Upper  
 76 100  
 78 0.0 25.7 38.5#

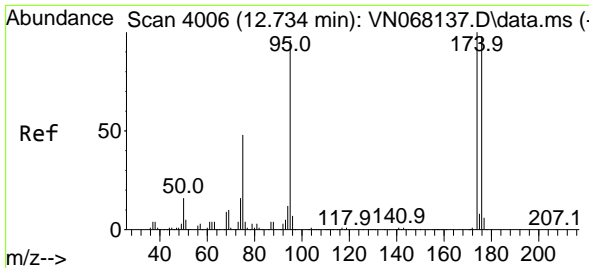


#59  
 2-Hexanone  
 Concen: 109.159 ug/l  
 RT: 11.095 min Scan# 3395  
 Delta R.T. 0.008 min  
 Lab File: VN068268.D  
 Acq: 23 Aug 2021 14:54

Tgt Ion: 43 Resp: 429996  
 Ion Ratio Lower Upper  
 43 100  
 58 20.0 24.7 74.1#

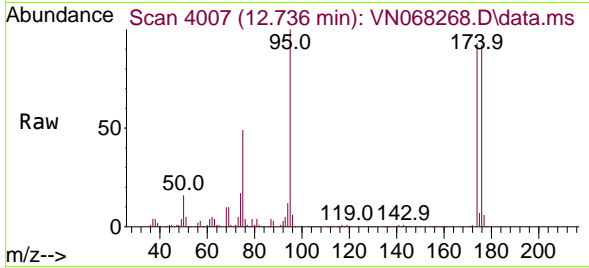




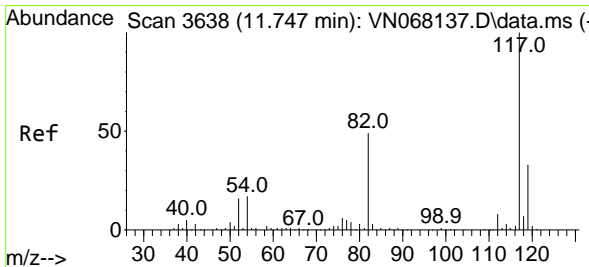
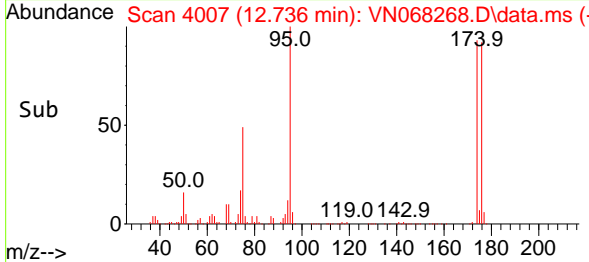
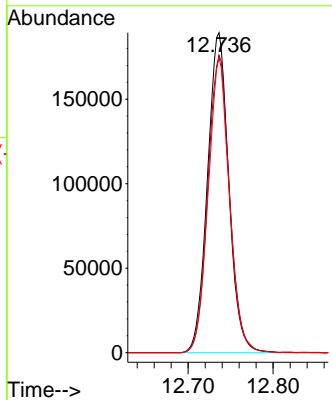


#62  
 4-Bromofluorobenzene  
 Concen: 49.848 ug/l  
 RT: 12.736 min Scan# 4007  
 Delta R.T. 0.002 min  
 Lab File: VN068268.D  
 Acq: 23 Aug 2021 14:54

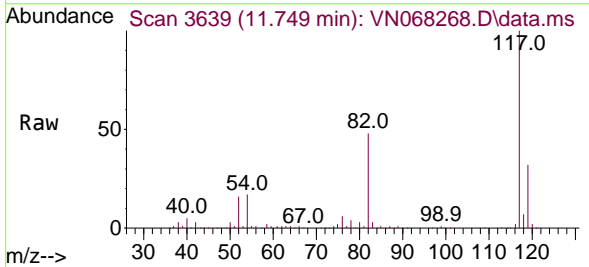
Instrument :  
 MSVOA\_N  
 ClientSampled :



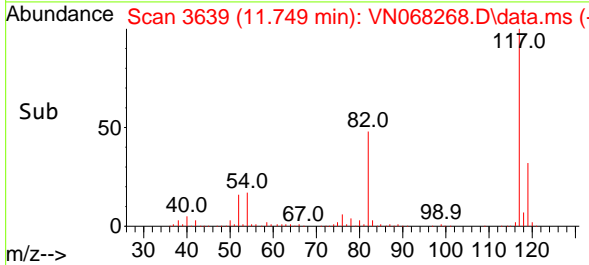
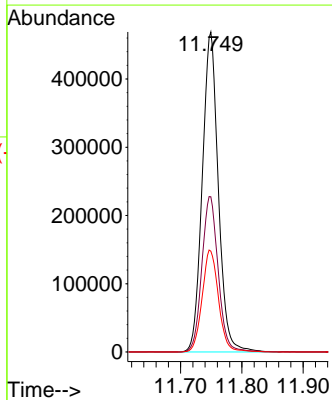
Tgt Ion: 95 Resp: 328649  
 Ion Ratio Lower Upper  
 95 100  
 174 95.2 0.0 122.0  
 176 91.9 0.0 117.6

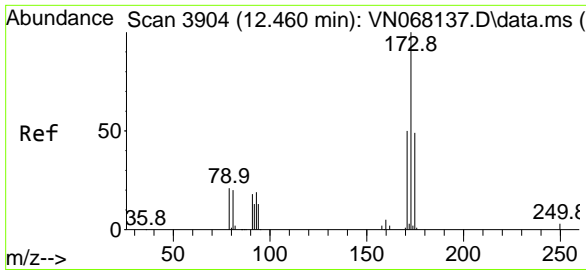


#63  
 Chlorobenzene-d5  
 Concen: 50.000 ug/l  
 RT: 11.749 min Scan# 3639  
 Delta R.T. 0.002 min  
 Lab File: VN068268.D  
 Acq: 23 Aug 2021 14:54



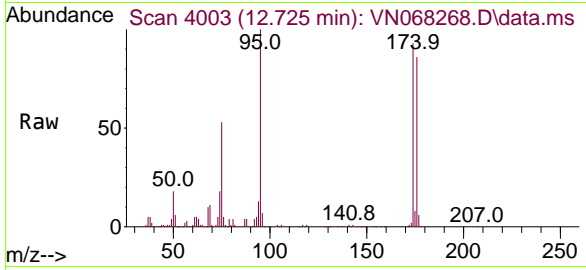
Tgt Ion: 117 Resp: 852983  
 Ion Ratio Lower Upper  
 117 100  
 82 48.5 53.1 79.7#  
 119 31.5 25.5 38.3



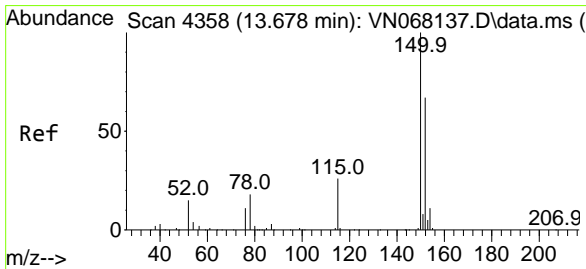
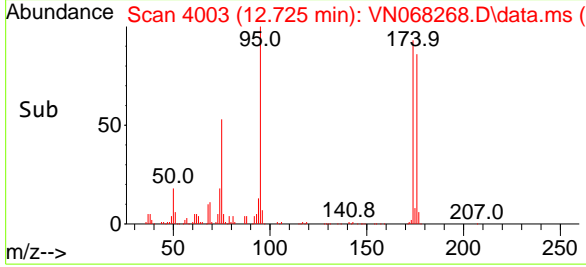
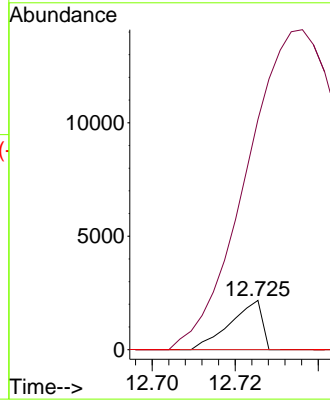


#71  
 Bromoform  
 Concen: 0.220 ug/l  
 RT: 12.725 min Scan# 4003  
 Delta R.T. 0.265 min  
 Lab File: VN068268.D  
 Acq: 23 Aug 2021 14:54

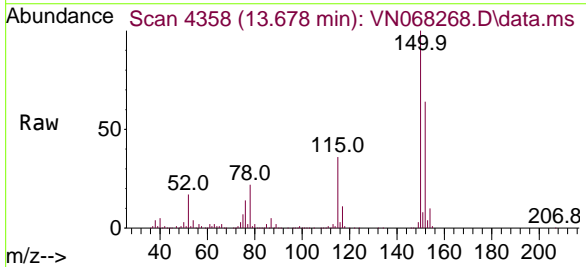
Instrument :  
 MSVOA\_N  
 ClientSampled :



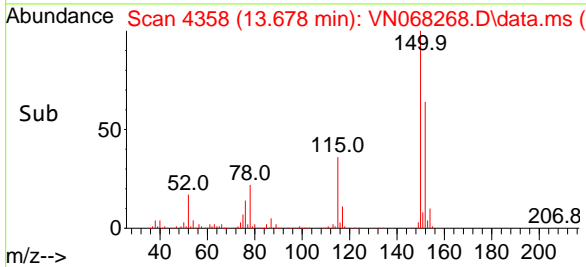
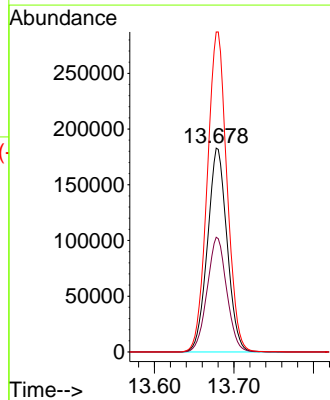
Tgt Ion:173 Resp: 1162  
 Ion Ratio Lower Upper  
 173 100  
 175 1899.2 23.9 71.8#  
 254 0.0 0.0 0.0

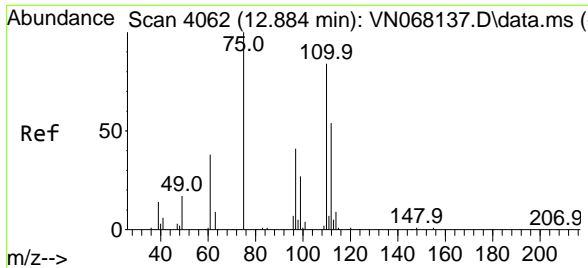


#72  
 1,4-Dichlorobenzene-d4  
 Concen: 50.000 ug/l  
 RT: 13.678 min Scan# 4358  
 Delta R.T. -0.000 min  
 Lab File: VN068268.D  
 Acq: 23 Aug 2021 14:54



Tgt Ion:152 Resp: 312257  
 Ion Ratio Lower Upper  
 152 100  
 115 56.5 36.1 108.5  
 150 158.1 0.0 351.8

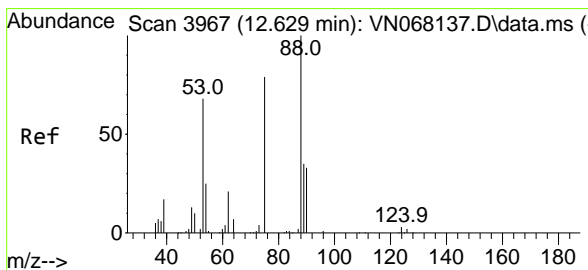
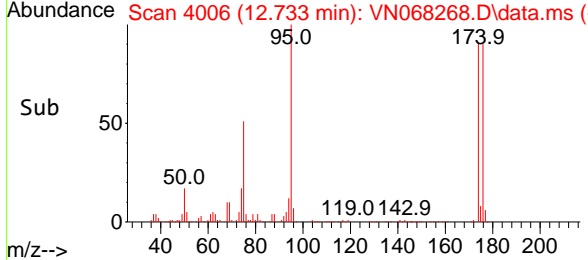
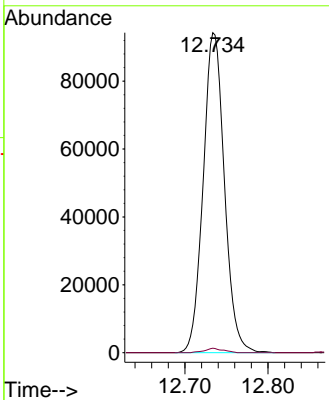
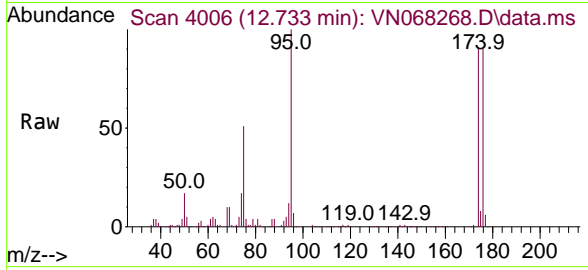




#76  
 1,2,3-Trichloropropane  
 Concen: 32.232 ug/l  
 RT: 12.733 min Scan# 4006  
 Delta R.T. -0.151 min  
 Lab File: VN068268.D  
 Acq: 23 Aug 2021 14:54

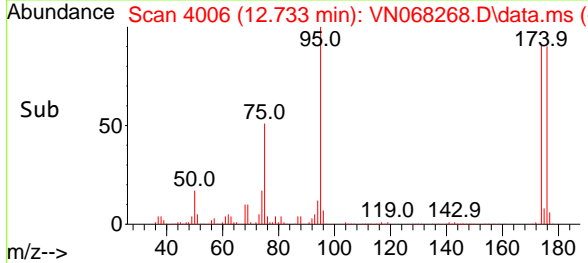
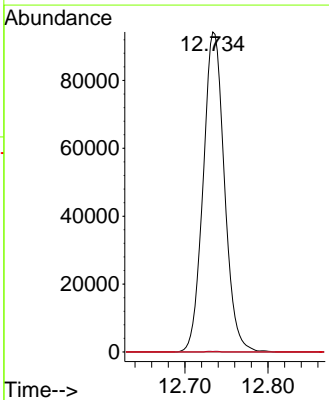
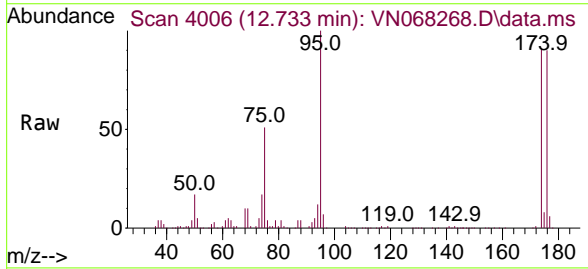
Instrument :  
 MSVOA\_N  
 ClientSampled :

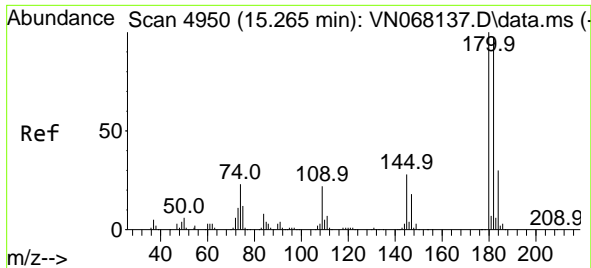
Tgt Ion: 75 Resp: 167287  
 Ion Ratio Lower Upper  
 75 100  
 77 1.2 0.0 0.0#



#81  
 trans-1,4-Dichloro-2-butene  
 Concen: 105.599 ug/l  
 RT: 12.733 min Scan# 4006  
 Delta R.T. 0.104 min  
 Lab File: VN068268.D  
 Acq: 23 Aug 2021 14:54

Tgt Ion: 75 Resp: 167287  
 Ion Ratio Lower Upper  
 75 100  
 53 0.1 87.6 131.4#  
 89 0.0 37.8 56.8#

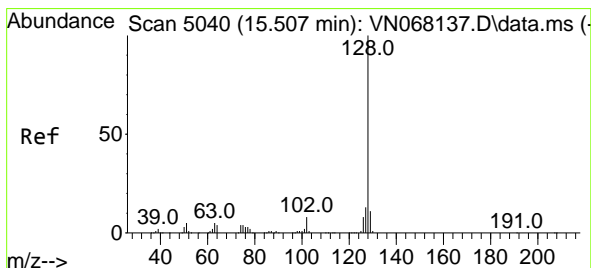
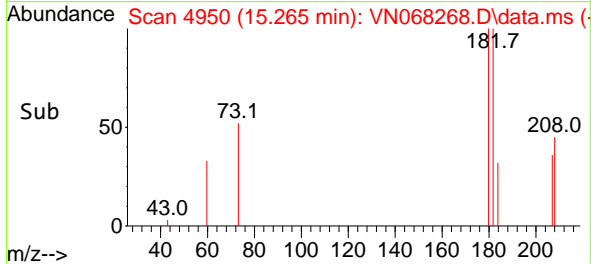
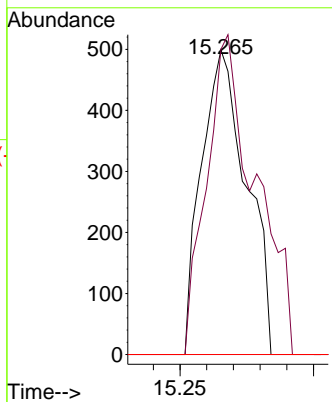
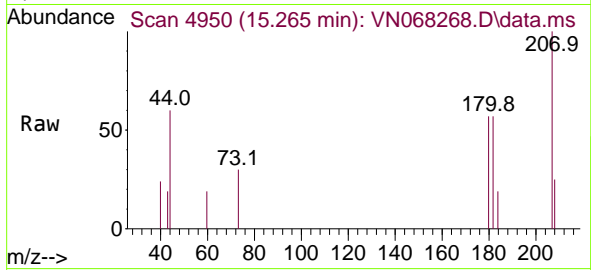




#93  
 1,2,4-Trichlorobenzene  
 Concen: 2.791 ug/l  
 RT: 15.265 min Scan# 4950  
 Delta R.T. 0.000 min  
 Lab File: VN068268.D  
 Acq: 23 Aug 2021 14:54

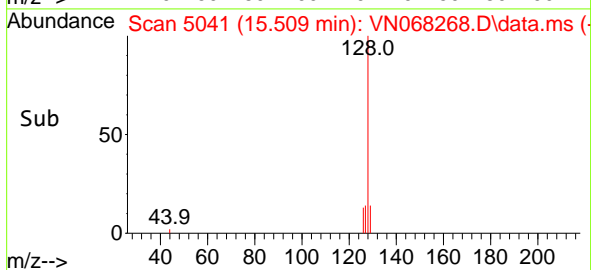
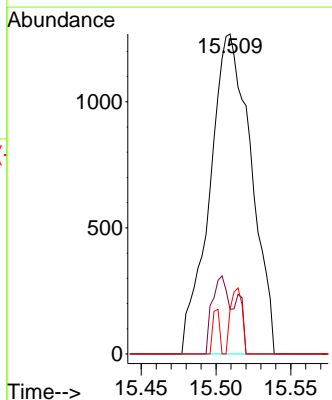
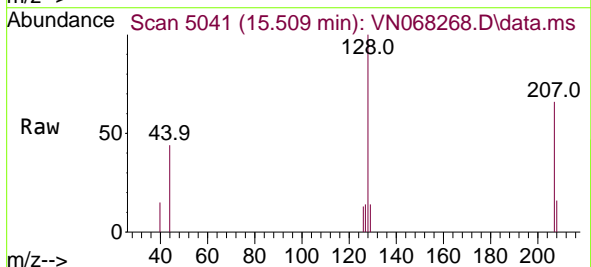
Instrument :  
 MSVOA\_N  
 ClientSampled :

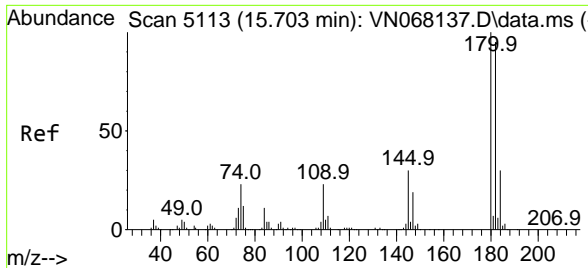
Tgt Ion	Resp	Lower	Upper
180	586		
180	100		
182	113.5	47.5	142.5
145	0.0	17.2	51.6#



#95  
 Naphthalene  
 Concen: 3.531 ug/l  
 RT: 15.509 min Scan# 5041  
 Delta R.T. 0.002 min  
 Lab File: VN068268.D  
 Acq: 23 Aug 2021 14:54

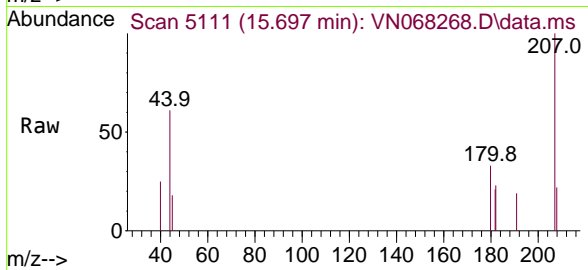
Tgt Ion	Resp	Lower	Upper
128	2446		
128	100		
127	0.0	10.6	15.8#
129	5.8	8.6	12.8#





#96  
 1,2,3-Trichlorobenzene  
 Concen: 2.896 ug/l  
 RT: 15.697 min Scan# 5111  
 Delta R.T. -0.006 min  
 Lab File: VN068268.D  
 Acq: 23 Aug 2021 14:54

Instrument :  
 MSVOA\_N  
 ClientSampled :



Tgt Ion:180 Resp: 340

Ion	Ratio	Lower	Upper
180	100		
182	63.2	47.8	143.3
145	0.0	18.2	54.6#

