

Data Path : Z:\voasrv\HPCHEM1\MSVOA\_N\Data\VN082321\  
 Data File : VN068269.D  
 Acq On : 23 Aug 2021 15:18  
 Operator : JC/MD  
 Sample : M3502-04  
 Misc : 5.00mL/MSVOA\_N/WATER  
 ALS Vial : 12 Sample Multiplier: 1

Instrument :  
 MSVOA\_N  
 ClientSampleId :  
 POST-MAEC-02

Quant Time: Aug 24 03:54:24 2021  
 Quant Method : Z:\voasrv\HPCHEM1\MSVOA\_N\methods\82N081721W.M  
 Quant Title : SW846 8260  
 QLast Update : Tue Aug 17 13:09:49 2021  
 Response via : Initial Calibration

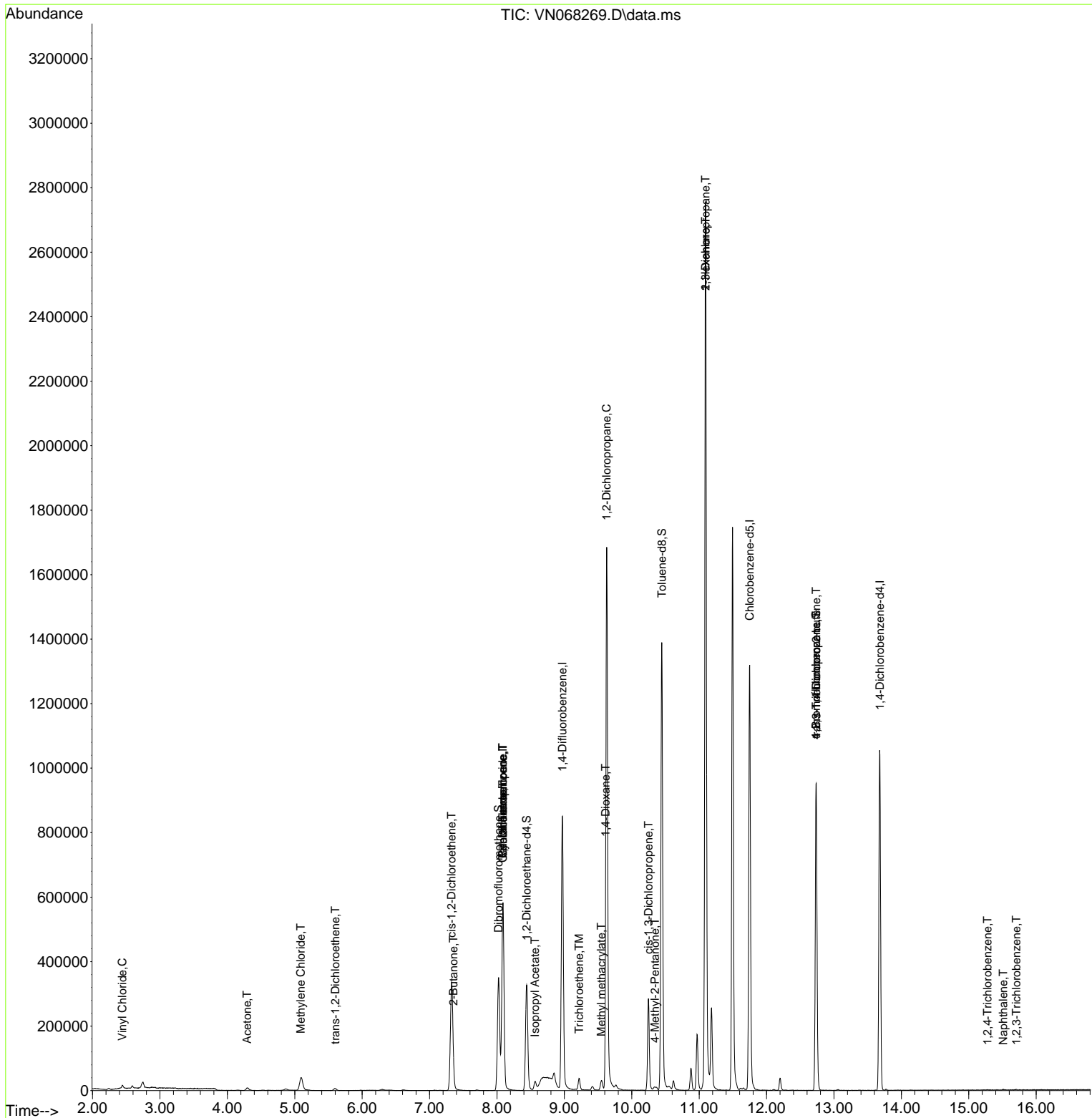
Compound	R.T.	QIon	Response	Conc	Units	Dev(Min)
-----						
Internal Standards						
1) Pentafluorobenzene	8.088	168	489177	50.000	ug/l	# 0.00
34) 1,4-Difluorobenzene	8.971	114	822712	50.000	ug/l	0.00
63) Chlorobenzene-d5	11.749	117	862214	50.000	ug/l	# 0.00
72) 1,4-Dichlorobenzene-d4	13.680	152	318602	50.000	ug/l	0.00
System Monitoring Compounds						
33) 1,2-Dichloroethane-d4	8.440	65	283766	54.329	ug/l	0.00
Spiked Amount	50.000	Range 61 - 141	Recovery	=	108.660%	
35) Dibromofluoromethane	8.024	113	256417	49.643	ug/l	0.00
Spiked Amount	50.000	Range 69 - 133	Recovery	=	99.280%	
50) Toluene-d8	10.446	98	1025044	52.082	ug/l	0.00
Spiked Amount	50.000	Range 65 - 126	Recovery	=	104.160%	
62) 4-Bromofluorobenzene	12.733	95	329289	50.259	ug/l	0.00
Spiked Amount	50.000	Range 58 - 135	Recovery	=	100.520%	
Target Compounds						
						Qvalue
4) Vinyl Chloride	2.443	62	8510	1.240	ug/l	# 89
5) Bromomethane	2.816	94	60	Below Cal		# 4
6) Chloroethane	2.748	64	162	Below Cal		# 44
13) Acrolein	4.049	56	229	Below Cal		89
16) Acetone	4.293	43	15898	10.425	ug/l	91
18) Methyl Acetate	4.867	43	7664	Below Cal		# 61
20) Methylene Chloride	5.090	84	34315	6.274	ug/l	# 81
21) trans-1,2-Dichloroethene	5.602	96	4746	1.069	ug/l	# 70
25) 2-Butanone	7.353	43	2300	0.968	ug/l	# 81
27) cis-1,2-Dichloroethene	7.327	96	226655	42.636	ug/l	68
31) Cyclohexane	8.088	56	8065	1.172	ug/l	# 6
36) 1,1-Dichloropropene	8.088	75	31054	4.617	ug/l	# 54
38) Carbon Tetrachloride	8.086	117	47287	6.096	ug/l	# 17
43) Isopropyl Acetate	8.566	43	32293	3.519	ug/l	# 91
44) Trichloroethene	9.220	130	13111	2.124	ug/l	73
45) 1,2-Dichloropropane	9.625	63	2286	0.473	ug/l	# 44
48) Methyl methacrylate	9.547	41	7611	1.990	ug/l	# 12
49) 1,4-Dioxane	9.612	88	52	0.563	ug/l	# 20
51) 4-Methyl-2-Pentanone	10.344	43	6896	1.223	ug/l	94
54) cis-1,3-Dichloropropene	10.247	75	55537	7.130	ug/l	# 55
57) 1,3-Dichloropropane	11.095	76	32266	3.746	ug/l	# 43
59) 2-Hexanone	11.095	43	392325	100.222	ug/l	# 57
76) 1,2,3-Trichloropropane	12.736	75	167740	31.676	ug/l	# 100
81) trans-1,4-Dichloro-2-b...	12.736	75	167740	103.776	ug/l	# 6
93) 1,2,4-Trichlorobenzene	15.276	180	407	2.757	ug/l	# 83
95) Naphthalene	15.509	128	1880	3.485	ug/l	# 80
96) 1,2,3-Trichlorobenzene	15.705	180	570	2.938	ug/l	# 85

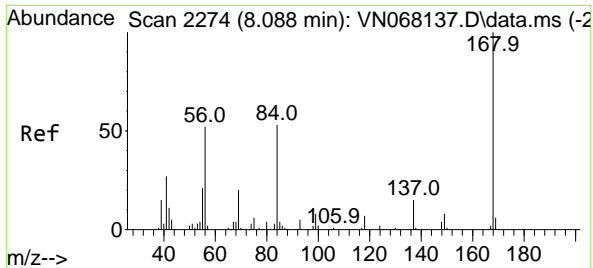
(#) = qualifier out of range (m) = manual integration (+) = signals summed

Data Path : Z:\voasrv\HPCHEM1\MSVOA\_N\Data\VN082321\  
 Data File : VN068269.D  
 Acq On : 23 Aug 2021 15:18  
 Operator : JC/MD  
 Sample : M3502-04  
 Misc : 5.00mL/MSVOA\_N/WATER  
 ALS Vial : 12 Sample Multiplier: 1

Instrument :  
 MSVOA\_N  
 Client Sampled :  
 POST-MAEC-02

Quant Time: Aug 24 03:54:24 2021  
 Quant Method : Z:\voasrv\HPCHEM1\MSVOA\_N\methods\82N081721W.M  
 Quant Title : SW846 8260  
 QLast Update : Tue Aug 17 13:09:49 2021  
 Response via : Initial Calibration

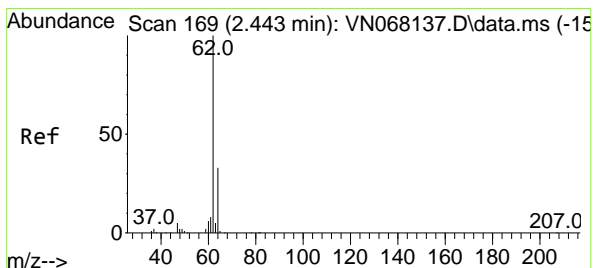
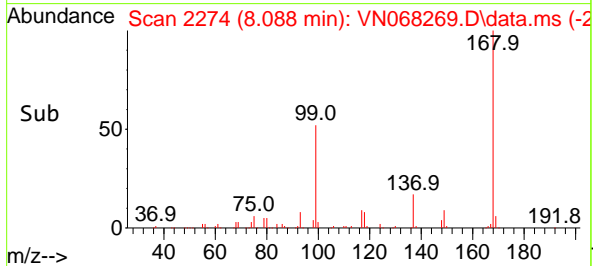
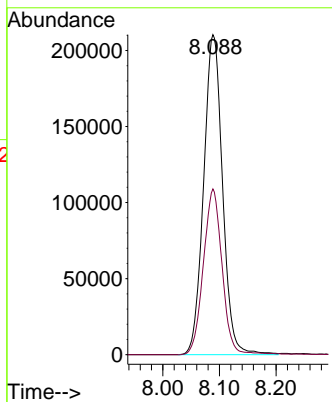
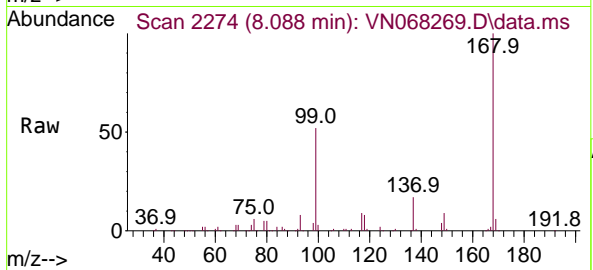




#1  
 Pentafluorobenzene  
 Concen: 50.000 ug/l  
 RT: 8.088 min Scan# 2274  
 Delta R.T. 0.000 min  
 Lab File: VN068269.D  
 Acq: 23 Aug 2021 15:18

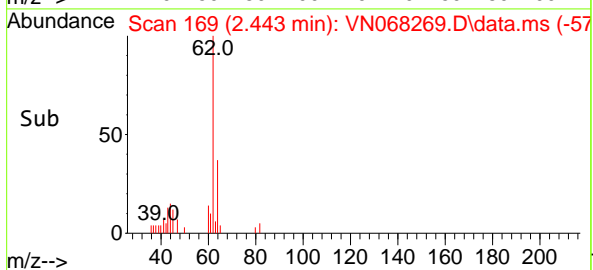
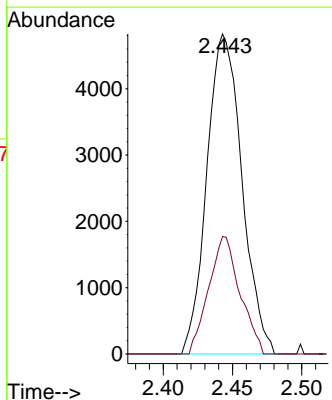
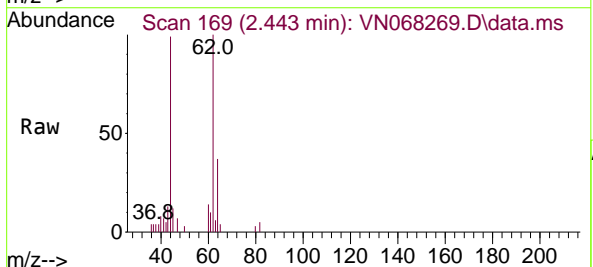
Instrument :  
 MSVOA\_N  
 ClientSampled :  
 POST-MAEC-02

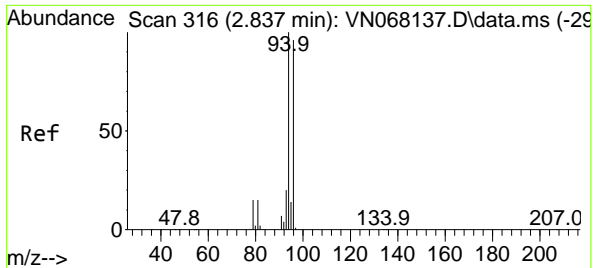
Tgt Ion:168 Resp: 489177  
 Ion Ratio Lower Upper  
 168 100  
 99 51.8 62.9 94.3#



#4  
 Vinyl Chloride  
 Concen: 1.240 ug/l  
 RT: 2.443 min Scan# 169  
 Delta R.T. -0.000 min  
 Lab File: VN068269.D  
 Acq: 23 Aug 2021 15:18

Tgt Ion: 62 Resp: 8510  
 Ion Ratio Lower Upper  
 62 100  
 64 36.7 24.4 36.6#

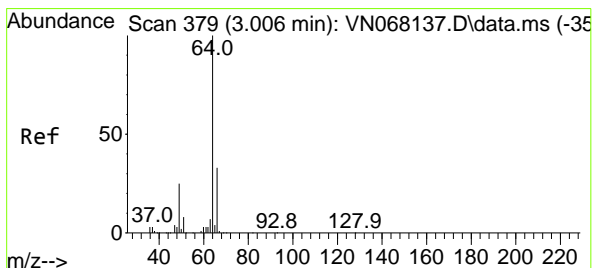
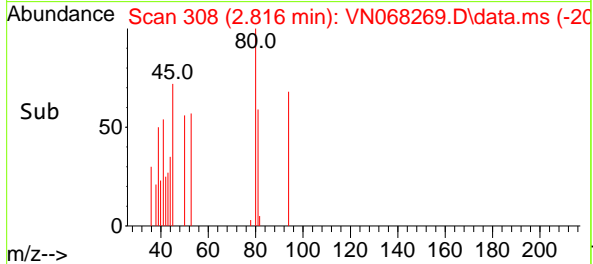
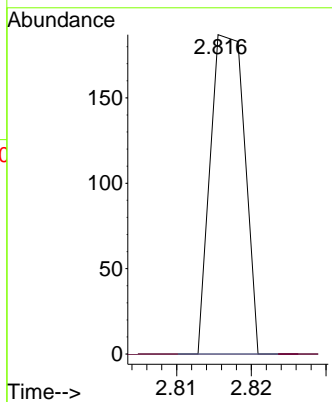
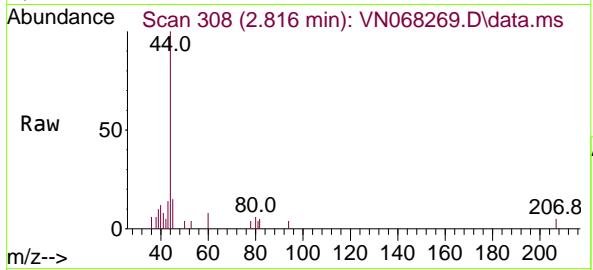




#5  
 Bromomethane  
 Concen: Below Cal  
 RT: 2.816 min Scan# 308  
 Delta R.T. -0.021 min  
 Lab File: VN068269.D  
 Acq: 23 Aug 2021 15:18

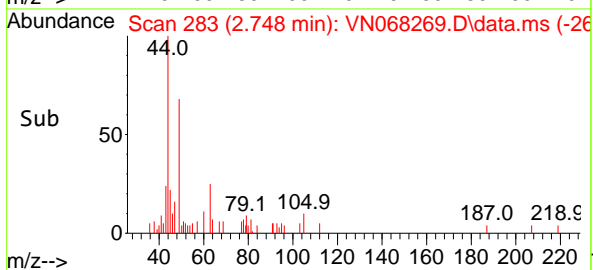
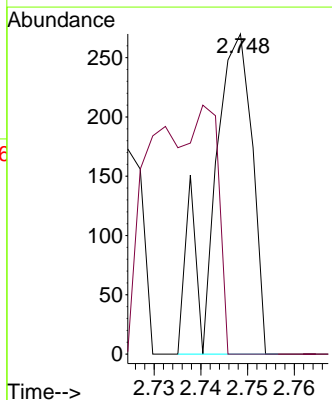
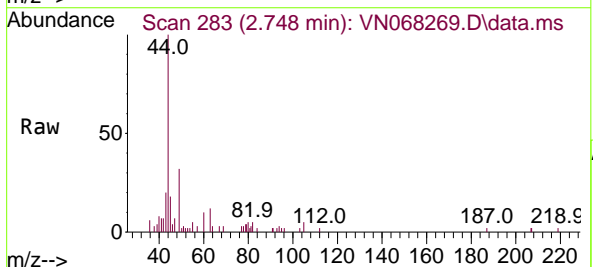
Instrument :  
 MSVOA\_N  
 ClientSampled :  
 POST-MAEC-02

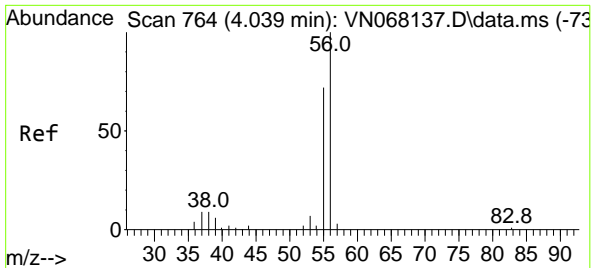
Tgt Ion: 94 Resp: 60  
 Ion Ratio Lower Upper  
 94 100  
 96 0.0 73.7 110.5#



#6  
 Chloroethane  
 Concen: Below Cal  
 RT: 2.748 min Scan# 283  
 Delta R.T. -0.258 min  
 Lab File: VN068269.D  
 Acq: 23 Aug 2021 15:18

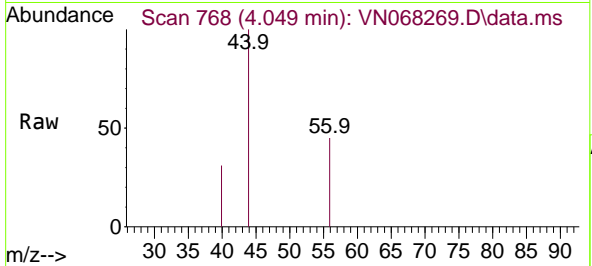
Tgt Ion: 64 Resp: 162  
 Ion Ratio Lower Upper  
 64 100  
 66 0.0 24.7 37.1#



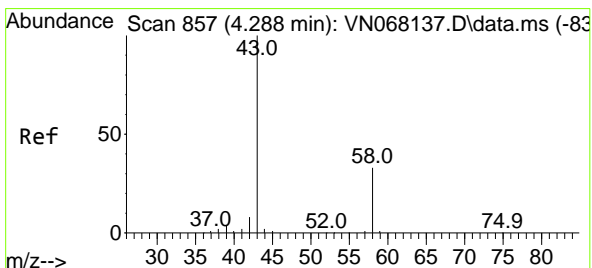
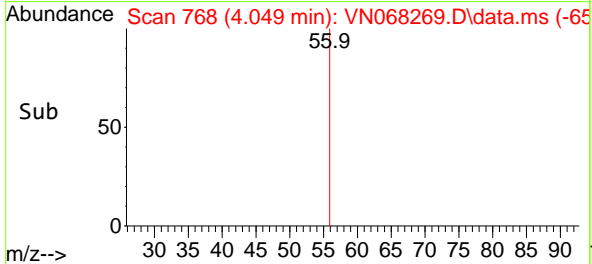
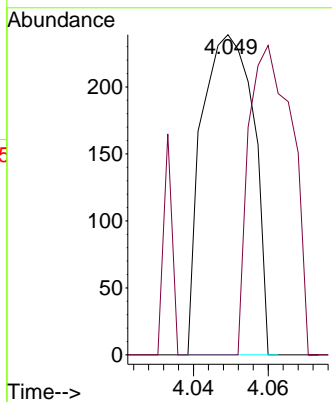


#13  
 Acrolein  
 Concen: Below Cal  
 RT: 4.049 min Scan# 768  
 Delta R.T. 0.010 min  
 Lab File: VN068269.D  
 Acq: 23 Aug 2021 15:18

Instrument :  
 MSVOA\_N  
 ClientSampled :  
 POST-MAEC-02

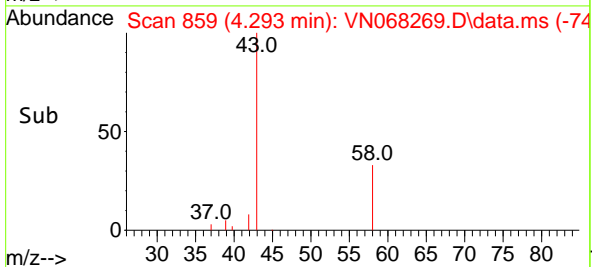
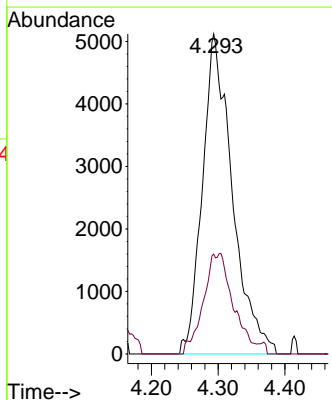
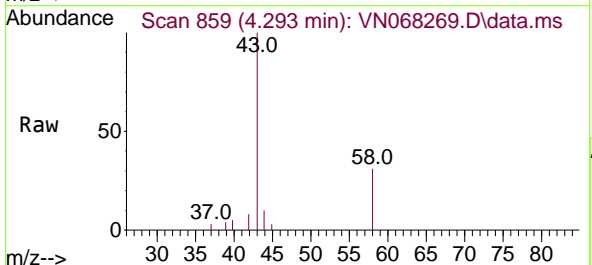


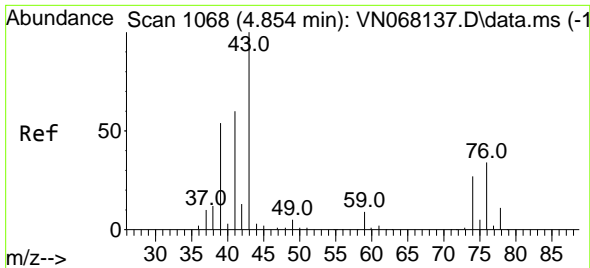
Tgt Ion: 56 Resp: 229  
 Ion Ratio Lower Upper  
 56 100  
 55 80.8 57.4 86.0



#16  
 Acetone  
 Concen: 10.425 ug/l  
 RT: 4.293 min Scan# 859  
 Delta R.T. 0.005 min  
 Lab File: VN068269.D  
 Acq: 23 Aug 2021 15:18

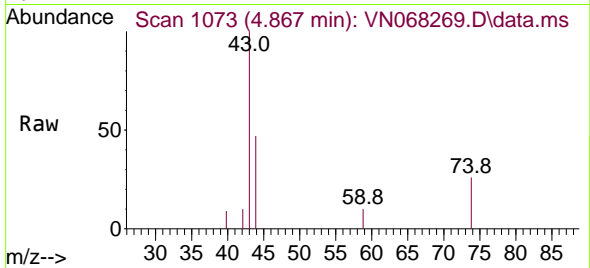
Tgt Ion: 43 Resp: 15898  
 Ion Ratio Lower Upper  
 43 100  
 58 31.2 21.2 31.8



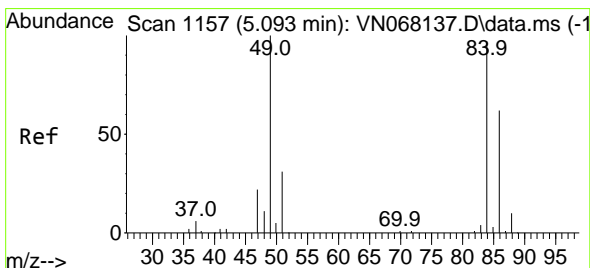
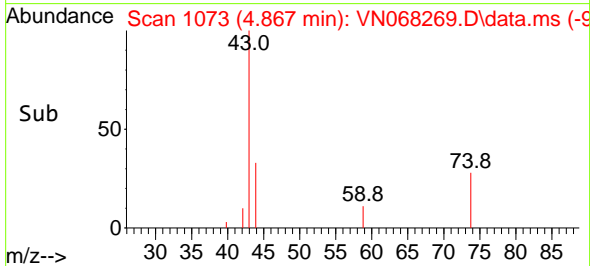
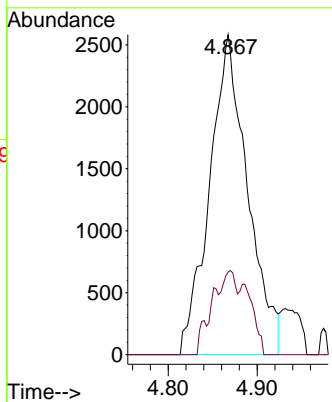


#18  
 Methyl Acetate  
 Concen: Below Cal  
 RT: 4.867 min Scan# 1073  
 Delta R.T. 0.013 min  
 Lab File: VN068269.D  
 Acq: 23 Aug 2021 15:18

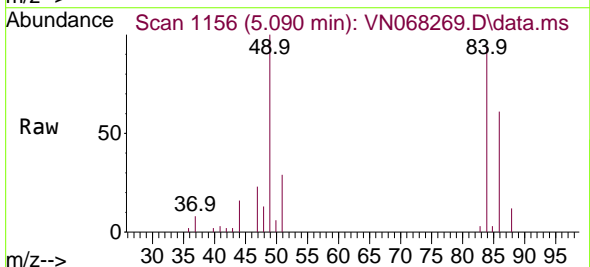
Instrument :  
 MSVOA\_N  
 ClientSampled :  
 POST-MAEC-02



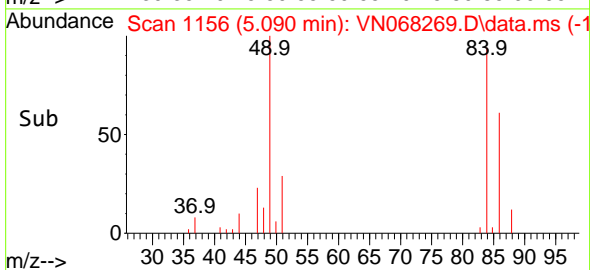
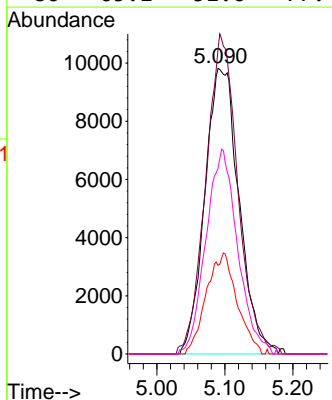
Tgt Ion: 43 Resp: 7664  
 Ion Ratio Lower Upper  
 43 100  
 74 3.1 17.4 26.0#

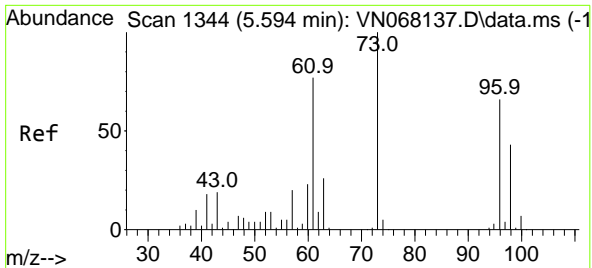


#20  
 Methylene Chloride  
 Concen: 6.274 ug/l  
 RT: 5.090 min Scan# 1156  
 Delta R.T. -0.003 min  
 Lab File: VN068269.D  
 Acq: 23 Aug 2021 15:18



Tgt Ion: 84 Resp: 34315  
 Ion Ratio Lower Upper  
 84 100  
 49 104.6 110.9 166.3#  
 51 31.0 32.6 49.0#  
 86 65.1 51.6 77.4

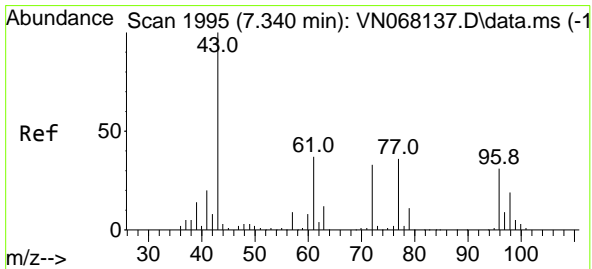
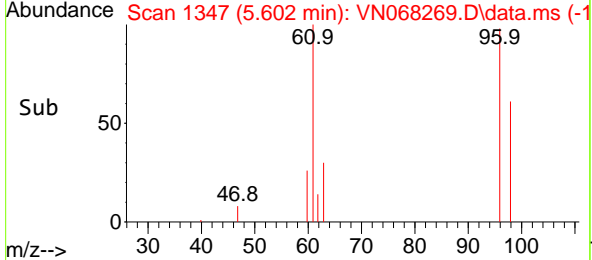
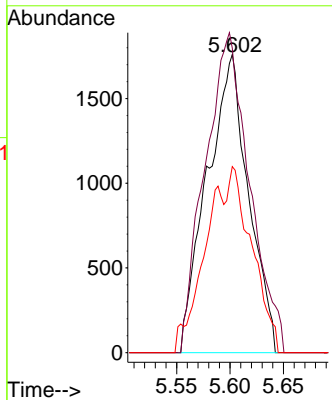
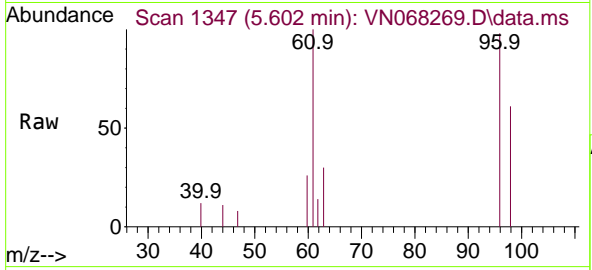




#21  
 trans-1,2-Dichloroethene  
 Concen: 1.069 ug/l  
 RT: 5.602 min Scan# 1347  
 Delta R.T. 0.008 min  
 Lab File: VN068269.D  
 Acq: 23 Aug 2021 15:18

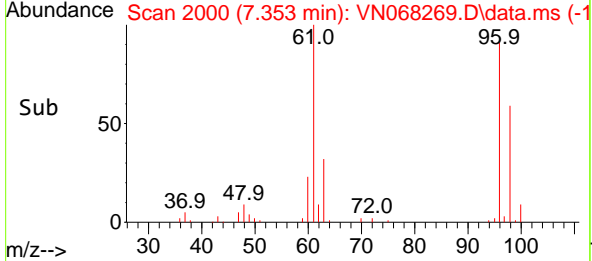
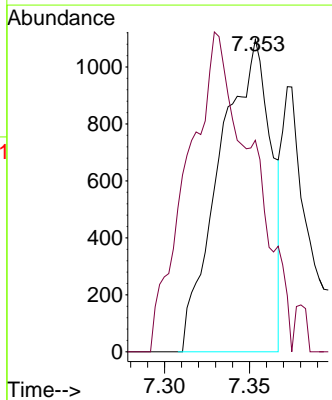
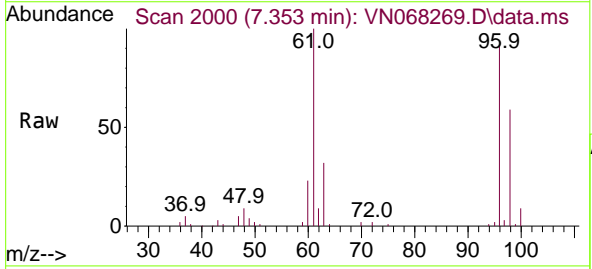
**Instrument :**  
 MSVOA\_N  
**ClientSampled :**  
 POST-MAEC-02

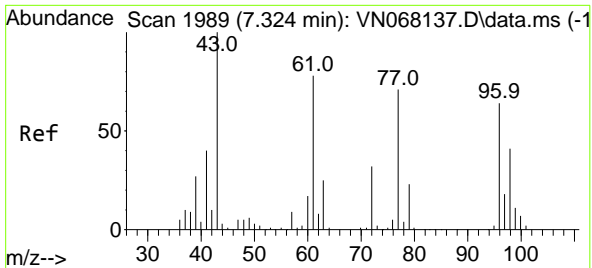
Tgt Ion	Resp	Lower	Upper
96	4746		
96	100		
61	102.2	123.5	185.3#
98	62.4	48.6	72.8



#25  
 2-Butanone  
 Concen: 0.968 ug/l  
 RT: 7.353 min Scan# 2000  
 Delta R.T. 0.013 min  
 Lab File: VN068269.D  
 Acq: 23 Aug 2021 15:18

Tgt Ion	Resp	Lower	Upper
43	2300		
43	100		
72	33.9	19.7	29.5#

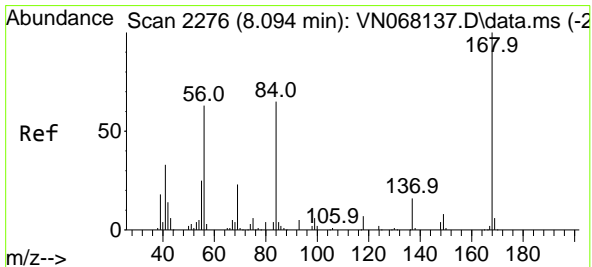
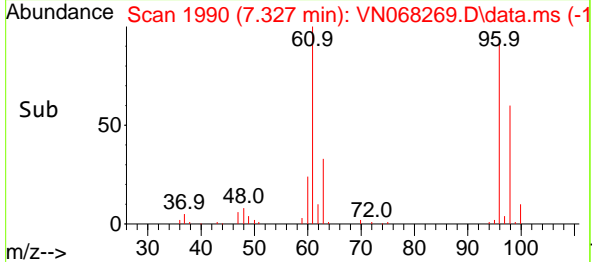
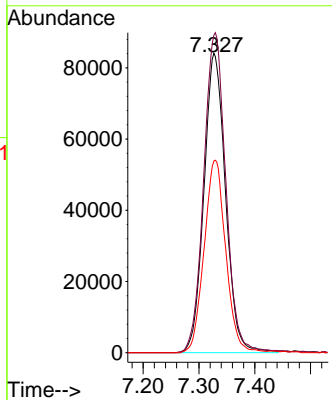
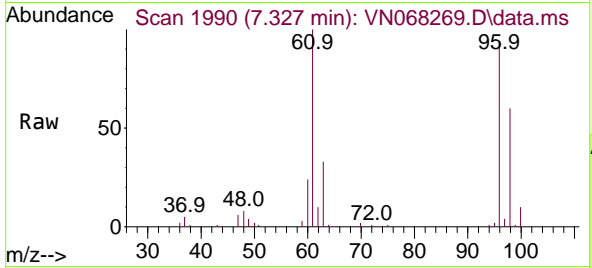




#27  
 cis-1,2-Dichloroethene  
 Concen: 42.636 ug/l  
 RT: 7.327 min Scan# 1990  
 Delta R.T. 0.003 min  
 Lab File: VN068269.D  
 Acq: 23 Aug 2021 15:18

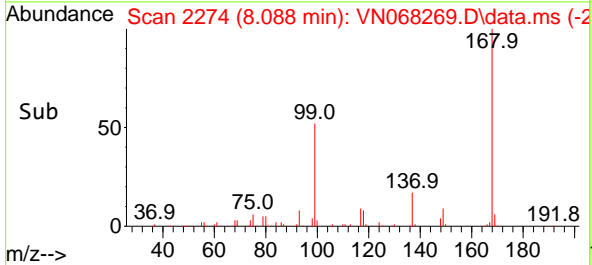
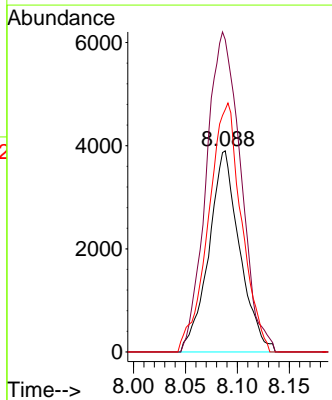
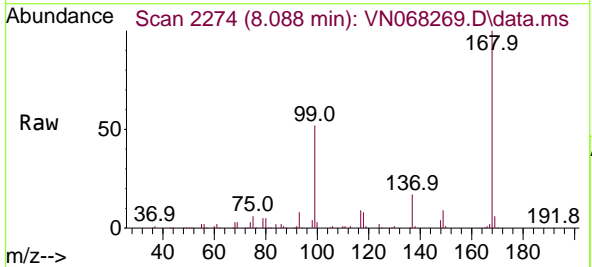
Instrument :  
 MSVOA\_N  
 ClientSampleId :  
 POST-MAEC-02

Tgt Ion	Resp	Lower	Upper
96	226655		
96	100		
61	108.7	0.0	338.8
98	64.2	0.0	129.8

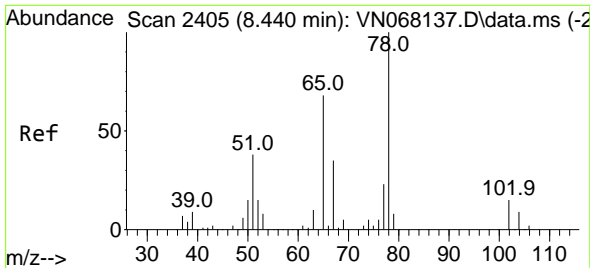


#31  
 Cyclohexane  
 Concen: 1.172 ug/l  
 RT: 8.088 min Scan# 2274  
 Delta R.T. -0.006 min  
 Lab File: VN068269.D  
 Acq: 23 Aug 2021 15:18

Tgt Ion	Resp	Lower	Upper
56	8065		
56	100		
69	155.3	27.3	40.9#
84	120.5	64.9	97.3#



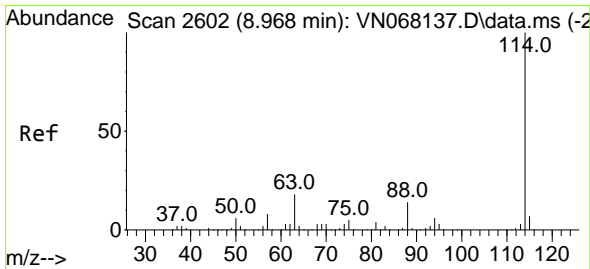
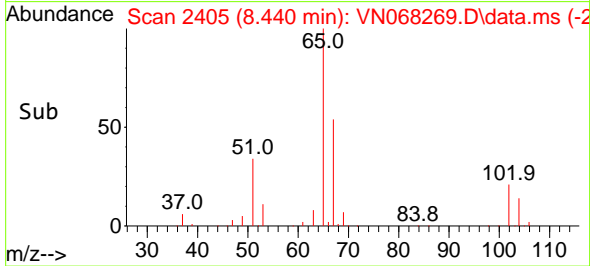
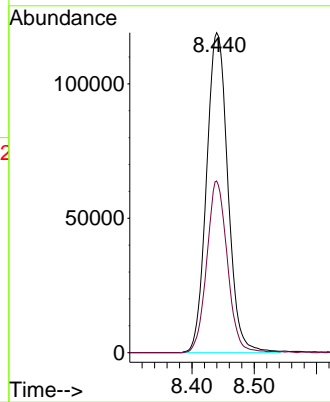
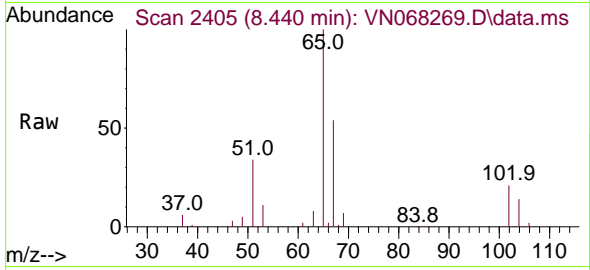




#33  
 1,2-Dichloroethane-d4  
 Concen: 54.329 ug/l  
 RT: 8.440 min Scan# 2405  
 Delta R.T. -0.000 min  
 Lab File: VN068269.D  
 Acq: 23 Aug 2021 15:18

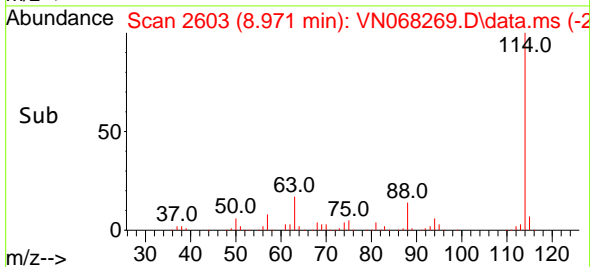
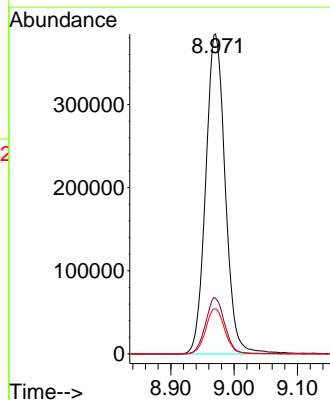
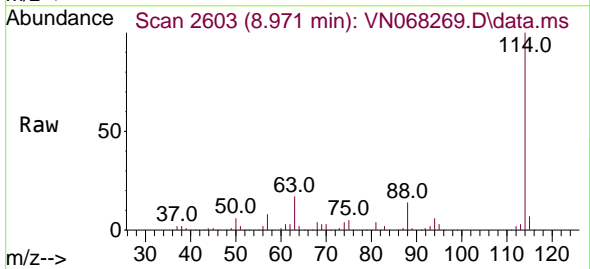
Instrument :  
 MSVOA\_N  
 ClientSampleId :  
 POST-MAEC-02

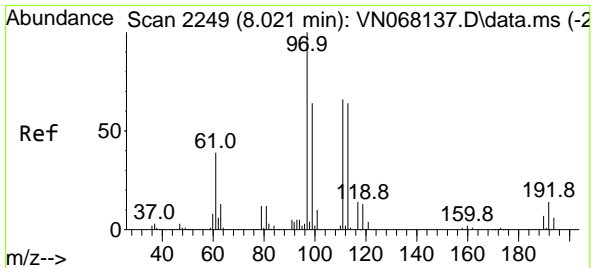
Tgt Ion: 65 Resp: 283766  
 Ion Ratio Lower Upper  
 65 100  
 67 51.6 0.0 98.6



#34  
 1,4-Difluorobenzene  
 Concen: 50.000 ug/l  
 RT: 8.971 min Scan# 2603  
 Delta R.T. 0.003 min  
 Lab File: VN068269.D  
 Acq: 23 Aug 2021 15:18

Tgt Ion:114 Resp: 822712  
 Ion Ratio Lower Upper  
 114 100  
 63 17.4 0.0 49.0  
 88 14.1 0.0 36.6

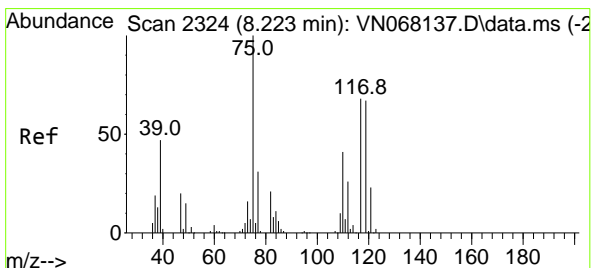
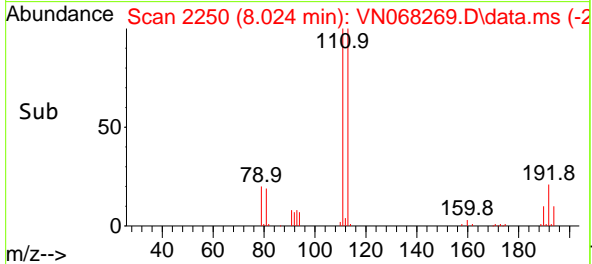
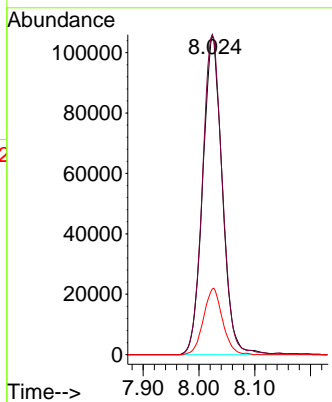
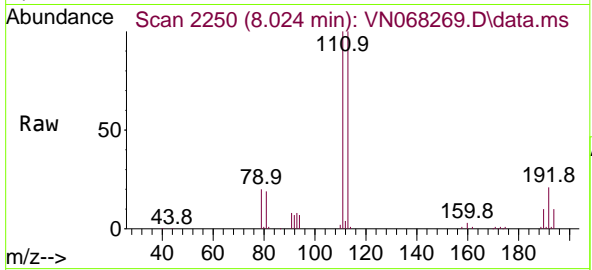




#35  
 Dibromofluoromethane  
 Concen: 49.643 ug/l  
 RT: 8.024 min Scan# 2250  
 Delta R.T. 0.003 min  
 Lab File: VN068269.D  
 Acq: 23 Aug 2021 15:18

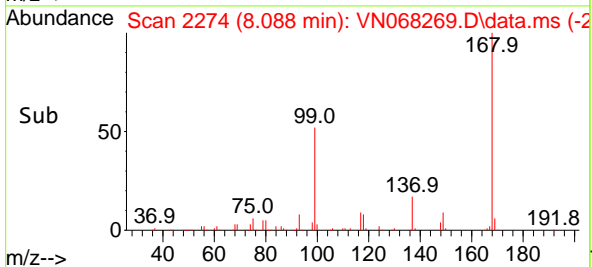
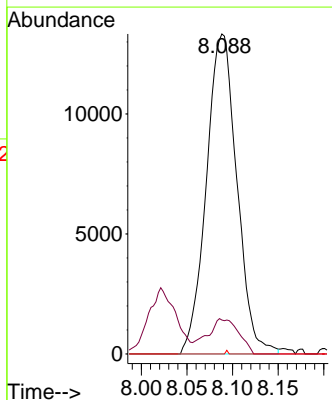
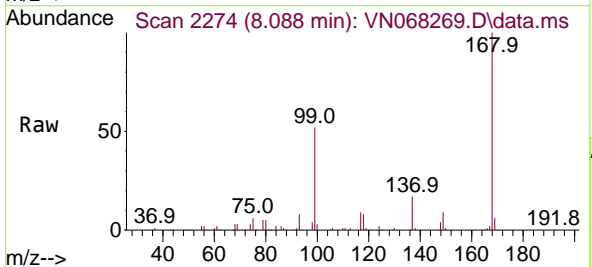
Instrument :  
 MSVOA\_N  
 ClientSampled :  
 POST-MAEC-02

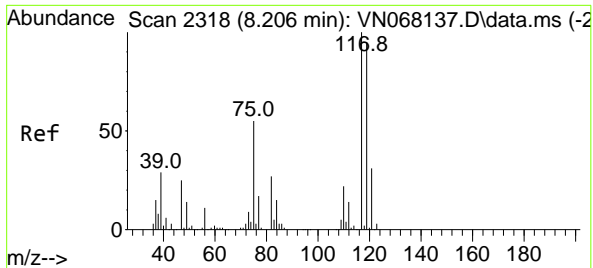
Tgt Ion:113 Resp: 256417  
 Ion Ratio Lower Upper  
 113 100  
 111 101.1 83.8 125.8  
 192 20.4 13.4 20.0#



#36  
 1,1-Dichloropropene  
 Concen: 4.617 ug/l  
 RT: 8.088 min Scan# 2274  
 Delta R.T. -0.135 min  
 Lab File: VN068269.D  
 Acq: 23 Aug 2021 15:18

Tgt Ion: 75 Resp: 31054  
 Ion Ratio Lower Upper  
 75 100  
 110 11.4 15.7 47.0#  
 77 0.1 24.6 37.0#



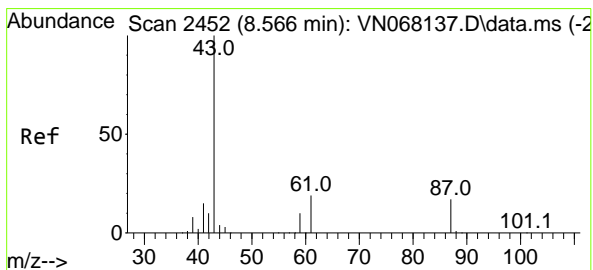
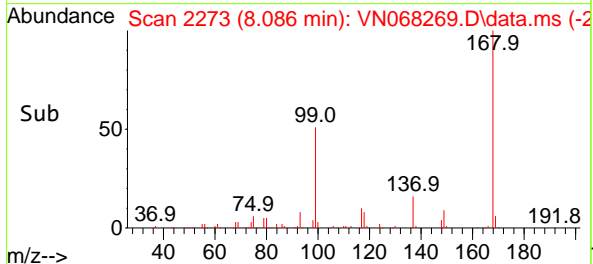
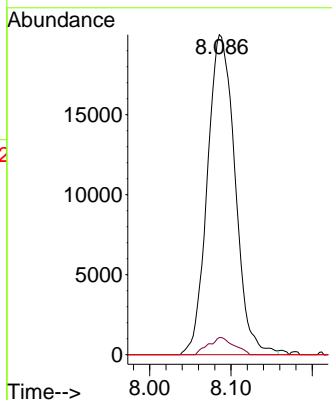
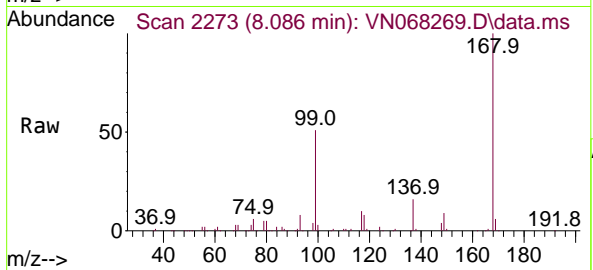


#38  
 Carbon Tetrachloride  
 Concen: 6.096 ug/l  
 RT: 8.086 min Scan# 2273  
 Delta R.T. -0.120 min  
 Lab File: VN068269.D  
 Acq: 23 Aug 2021 15:18

Instrument : MSVOA\_N  
 ClientSampled : POST-MAEC-02

Tgt Ion: 117 Resp: 47287

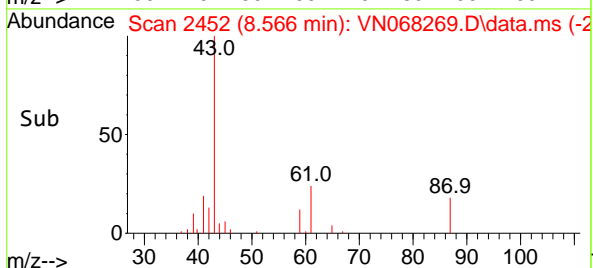
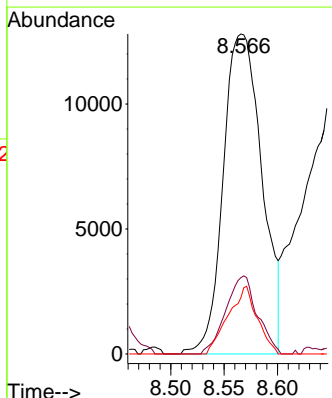
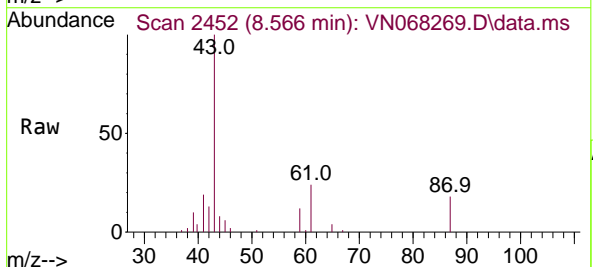
Ion	Ratio	Lower	Upper
117	100		
119	5.4	75.4	113.2#
121	0.0	23.5	35.3#

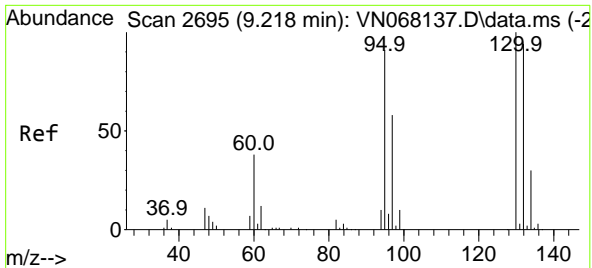


#43  
 Isopropyl Acetate  
 Concen: 3.519 ug/l  
 RT: 8.566 min Scan# 2452  
 Delta R.T. -0.000 min  
 Lab File: VN068269.D  
 Acq: 23 Aug 2021 15:18

Tgt Ion: 43 Resp: 32293

Ion	Ratio	Lower	Upper
43	100		
61	19.8	19.0	28.4
87	15.7	9.5	14.3#

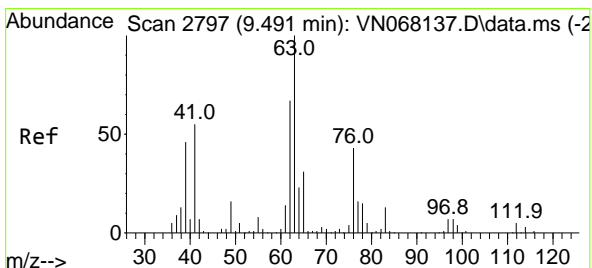
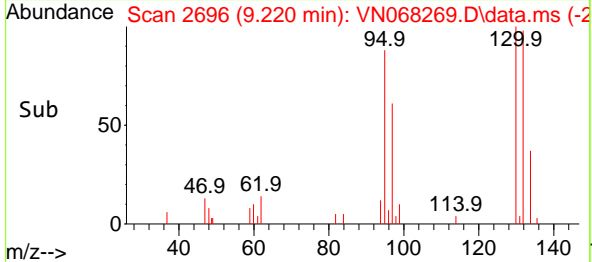
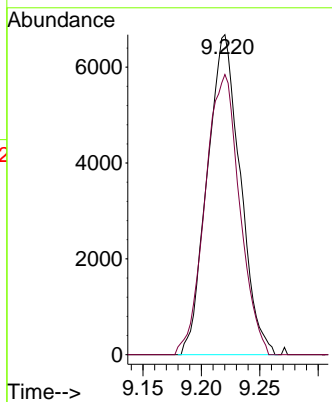
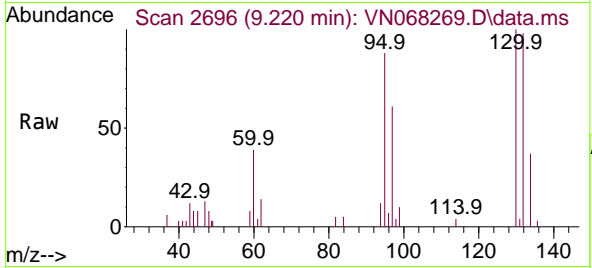




#44  
 Trichloroethene  
 Concen: 2.124 ug/l  
 RT: 9.220 min Scan# 2696  
 Delta R.T. 0.002 min  
 Lab File: VN068269.D  
 Acq: 23 Aug 2021 15:18

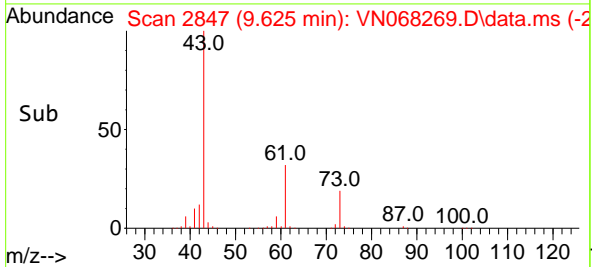
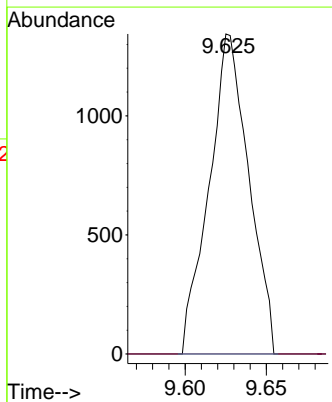
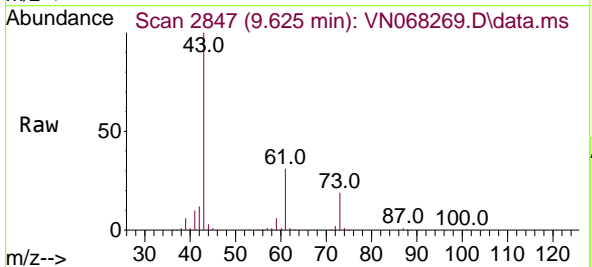
Instrument :  
 MSVOA\_N  
 ClientSampled :  
 POST-MAEC-02

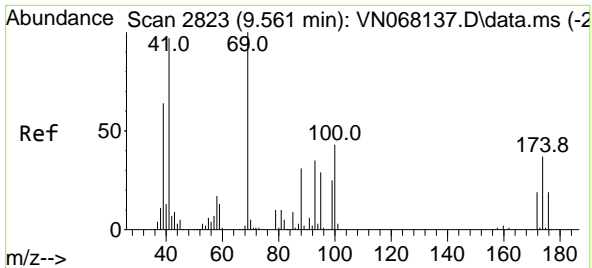
Tgt Ion:130 Resp: 13111  
 Ion Ratio Lower Upper  
 130 100  
 95 87.5 0.0 234.4



#45  
 1,2-Dichloropropane  
 Concen: 0.473 ug/l  
 RT: 9.625 min Scan# 2847  
 Delta R.T. 0.134 min  
 Lab File: VN068269.D  
 Acq: 23 Aug 2021 15:18

Tgt Ion: 63 Resp: 2286  
 Ion Ratio Lower Upper  
 63 100  
 65 0.0 24.3 36.5#



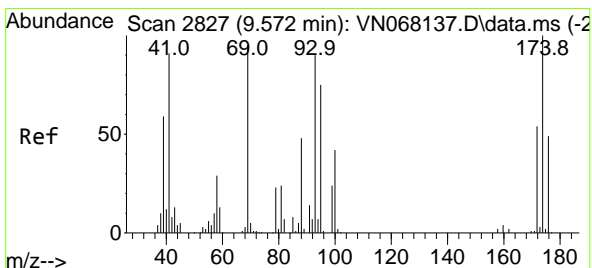
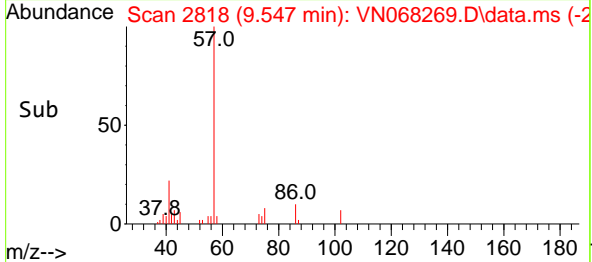
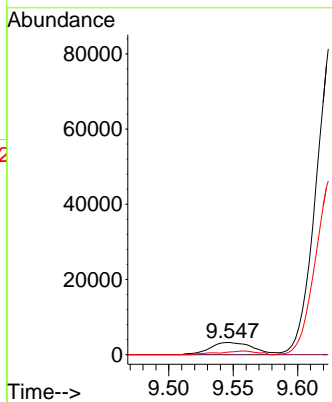
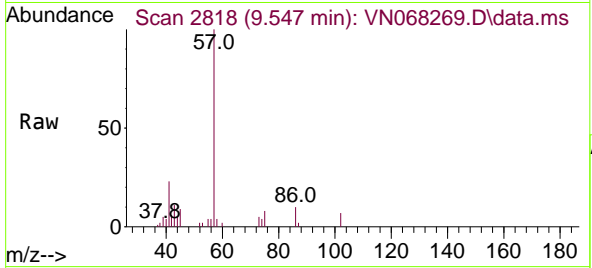


#48  
 Methyl methacrylate  
 Concen: 1.990 ug/l  
 RT: 9.547 min Scan# 2818  
 Delta R.T. -0.014 min  
 Lab File: VN068269.D  
 Acq: 23 Aug 2021 15:18

Instrument :  
 MSVOA\_N  
 ClientSampled :  
 POST-MAEC-02

Tgt Ion: 41 Resp: 7611

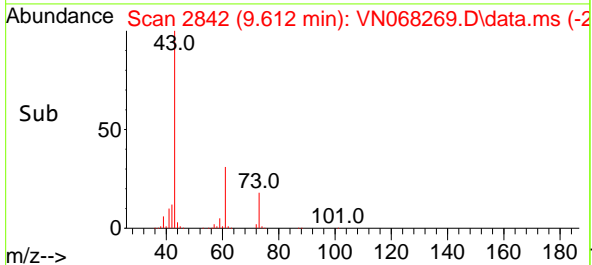
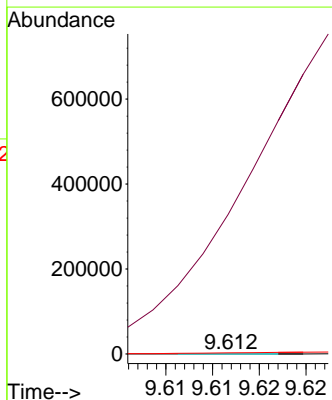
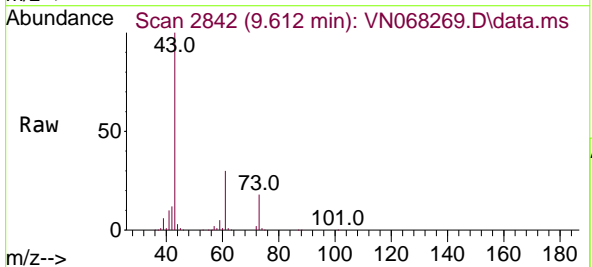
Ion	Ratio	Lower	Upper
41	100		
69	0.0	64.6	96.8#
39	0.0	53.3	79.9#

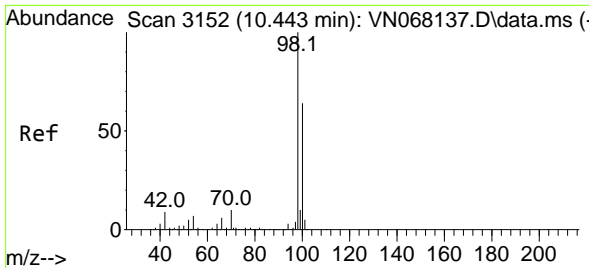


#49  
 1,4-Dioxane  
 Concen: 0.563 ug/l  
 RT: 9.612 min Scan# 2842  
 Delta R.T. 0.040 min  
 Lab File: VN068269.D  
 Acq: 23 Aug 2021 15:18

Tgt Ion: 88 Resp: 52

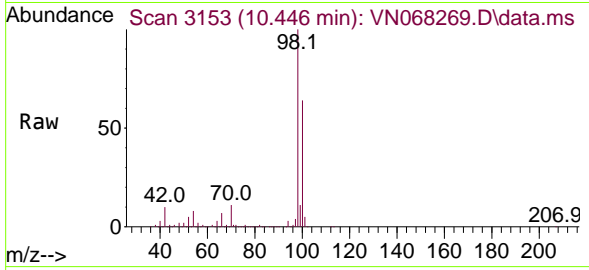
Ion	Ratio	Lower	Upper
88	100		
43	0.0	28.8	43.2#
58	0.0	60.4	90.6#



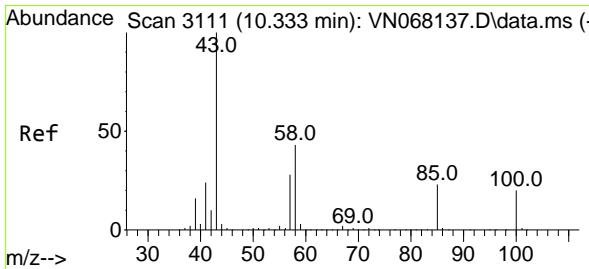
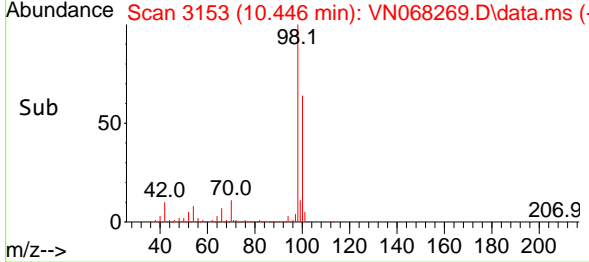
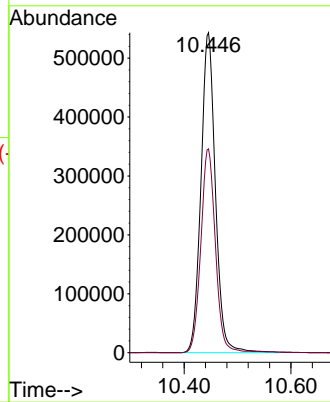


#50  
 Toluene-d8  
 Concen: 52.082 ug/l  
 RT: 10.446 min Scan# 3153  
 Delta R.T. 0.003 min  
 Lab File: VN068269.D  
 Acq: 23 Aug 2021 15:18

**Instrument :**  
 MSVOA\_N  
**ClientSampled :**  
 POST-MAEC-02

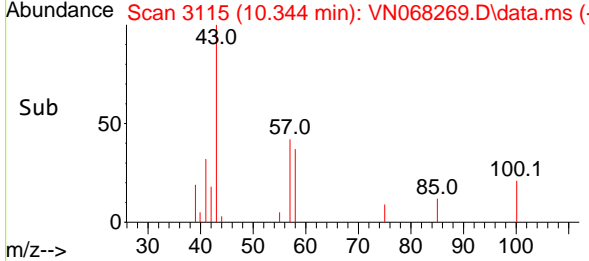
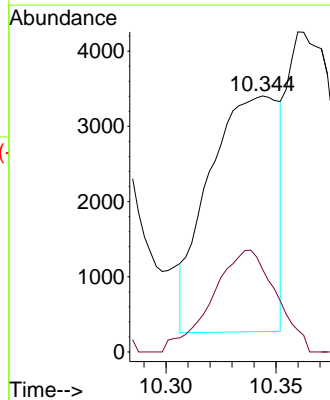
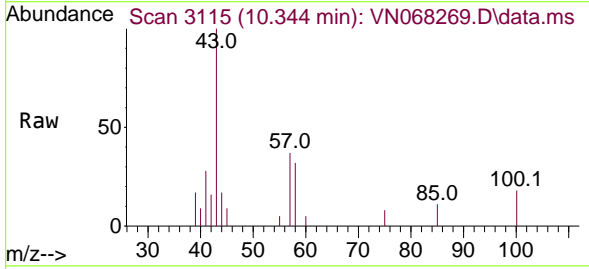


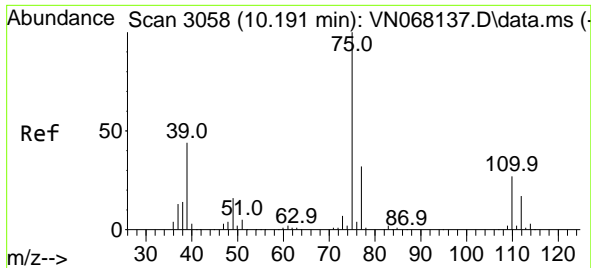
Tgt Ion: 98 Resp: 1025044  
 Ion Ratio Lower Upper  
 98 100  
 100 63.8 51.7 77.5



#51  
 4-Methyl-2-Pentanone  
 Concen: 1.223 ug/l  
 RT: 10.344 min Scan# 3115  
 Delta R.T. 0.011 min  
 Lab File: VN068269.D  
 Acq: 23 Aug 2021 15:18

Tgt Ion: 43 Resp: 6896  
 Ion Ratio Lower Upper  
 43 100  
 58 39.4 28.6 43.0

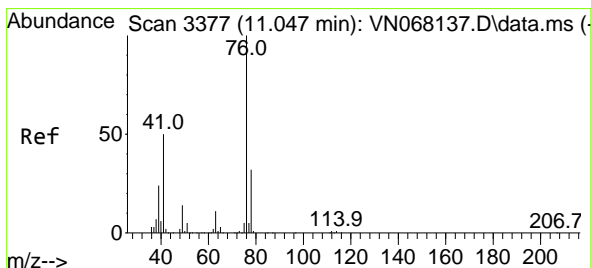
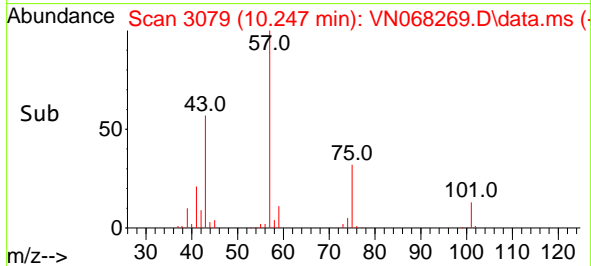
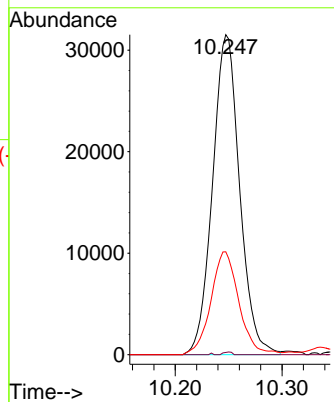
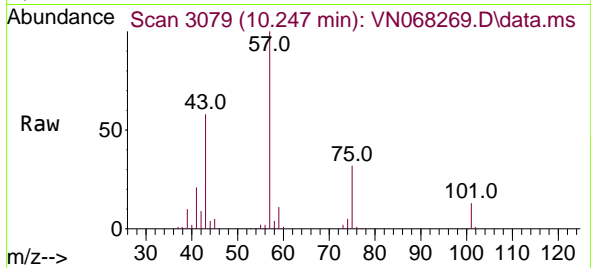




#54  
 cis-1,3-Dichloropropene  
 Concen: 7.130 ug/l  
 RT: 10.247 min Scan# 3079  
 Delta R.T. 0.056 min  
 Lab File: VN068269.D  
 Acq: 23 Aug 2021 15:18

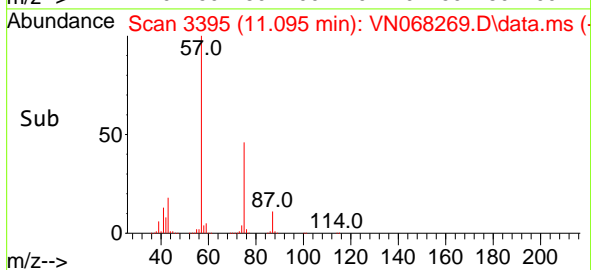
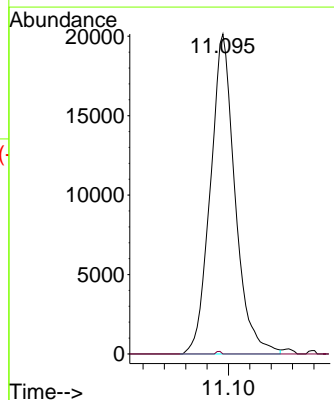
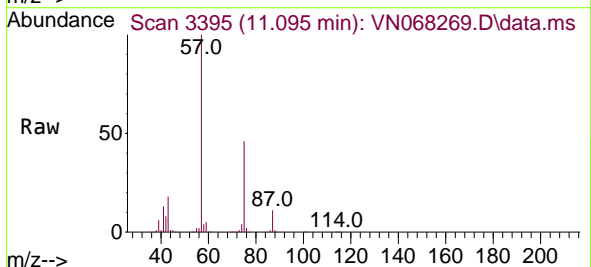
Instrument :  
 MSVOA\_N  
 ClientSampled :  
 POST-MAEC-02

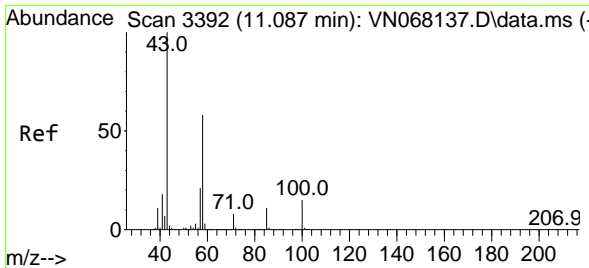
Tgt Ion	Resp	Lower	Upper
75	100		
77	0.7	24.6	37.0#
39	32.1	50.7	76.1#



#57  
 1,3-Dichloropropane  
 Concen: 3.746 ug/l  
 RT: 11.095 min Scan# 3395  
 Delta R.T. 0.048 min  
 Lab File: VN068269.D  
 Acq: 23 Aug 2021 15:18

Tgt Ion	Resp	Lower	Upper
76	100		
78	0.2	25.7	38.5#

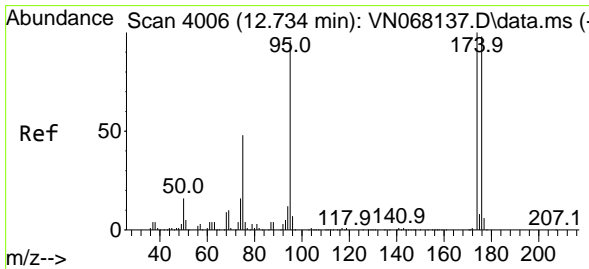
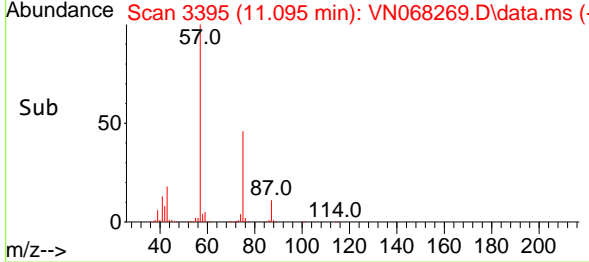
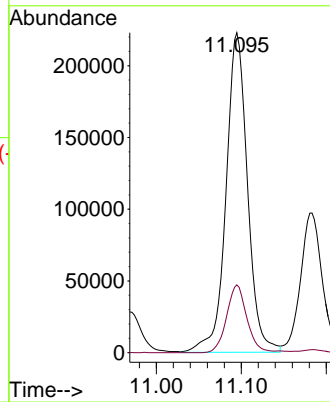
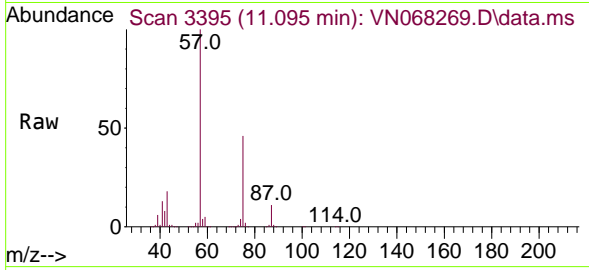




#59  
 2-Hexanone  
 Concen: 100.222 ug/l  
 RT: 11.095 min Scan# 3395  
 Delta R.T. 0.008 min  
 Lab File: VN068269.D  
 Acq: 23 Aug 2021 15:18

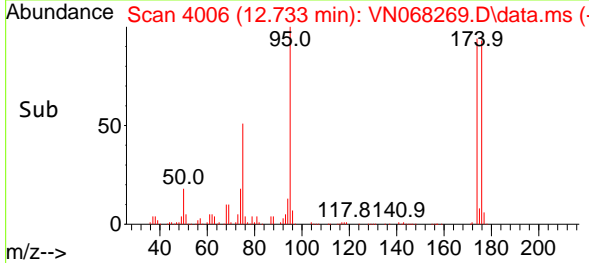
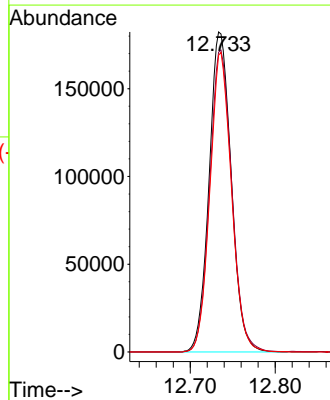
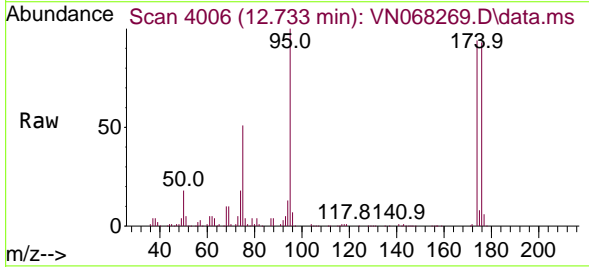
Instrument :  
 MSVOA\_N  
 ClientSampled :  
 POST-MAEC-02

Tgt Ion: 43 Resp: 392325  
 Ion Ratio Lower Upper  
 43 100  
 58 19.9 24.7 74.1#

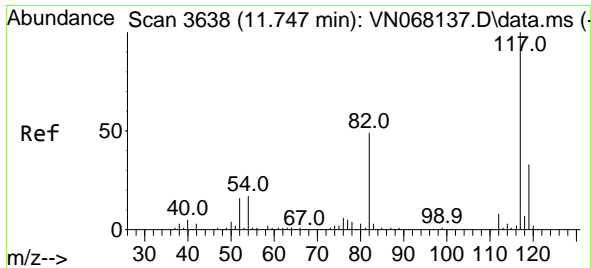


#62  
 4-Bromofluorobenzene  
 Concen: 50.259 ug/l  
 RT: 12.733 min Scan# 4006  
 Delta R.T. -0.001 min  
 Lab File: VN068269.D  
 Acq: 23 Aug 2021 15:18

Tgt Ion: 95 Resp: 329289  
 Ion Ratio Lower Upper  
 95 100  
 174 94.8 0.0 122.0  
 176 91.2 0.0 117.6



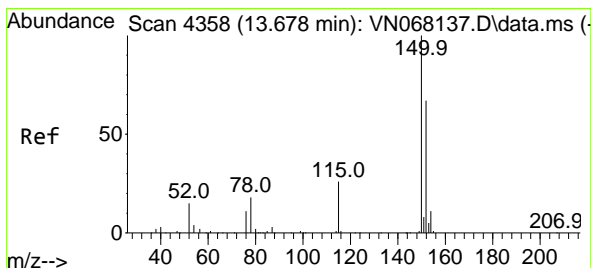
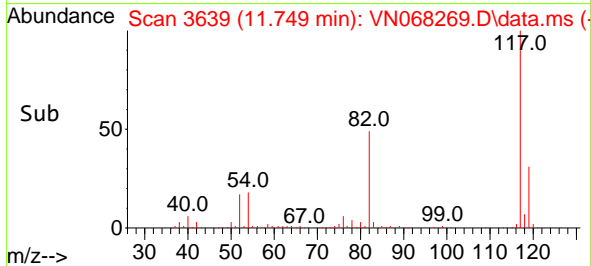
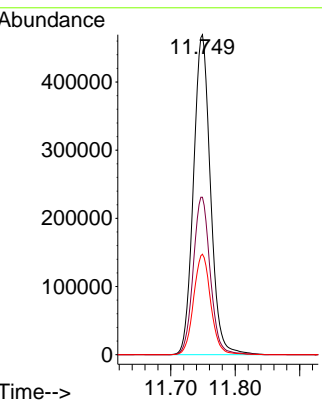
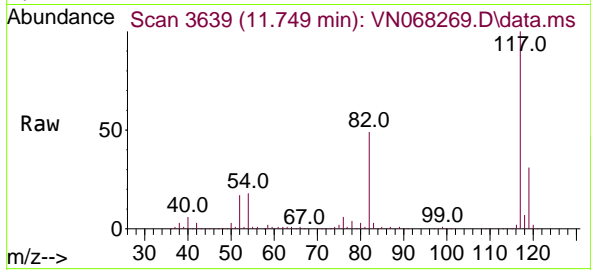




#63  
 Chlorobenzene-d5  
 Concen: 50.000 ug/l  
 RT: 11.749 min Scan# 3639  
 Delta R.T. 0.002 min  
 Lab File: VN068269.D  
 Acq: 23 Aug 2021 15:18

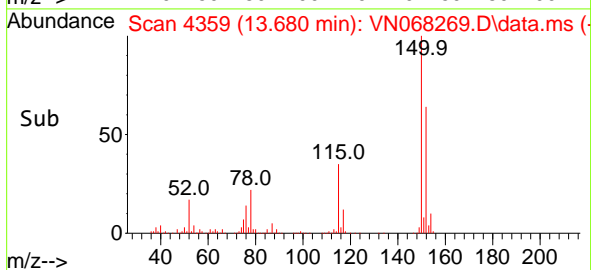
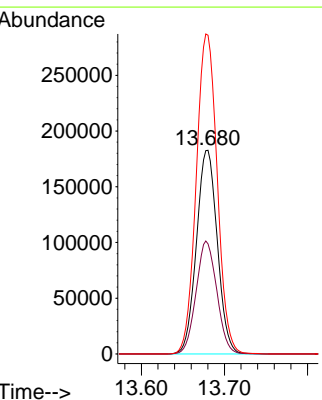
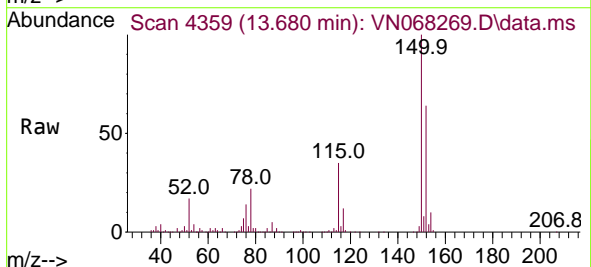
**Instrument :**  
 MSVOA\_N  
**ClientSampled :**  
 POST-MAEC-02

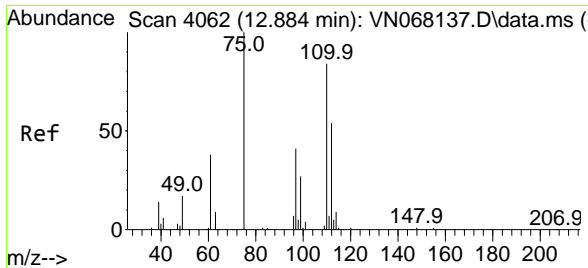
Tgt Ion:117 Resp: 862214  
 Ion Ratio Lower Upper  
 117 100  
 82 49.2 53.1 79.7#  
 119 31.4 25.5 38.3



#72  
 1,4-Dichlorobenzene-d4  
 Concen: 50.000 ug/l  
 RT: 13.680 min Scan# 4359  
 Delta R.T. 0.002 min  
 Lab File: VN068269.D  
 Acq: 23 Aug 2021 15:18

Tgt Ion:152 Resp: 318602  
 Ion Ratio Lower Upper  
 152 100  
 115 55.1 36.1 108.5  
 150 157.8 0.0 351.8

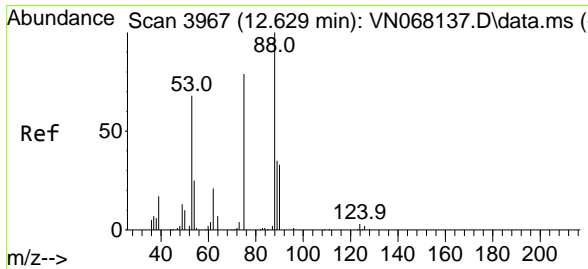
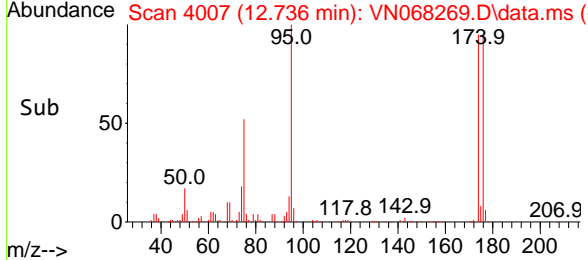
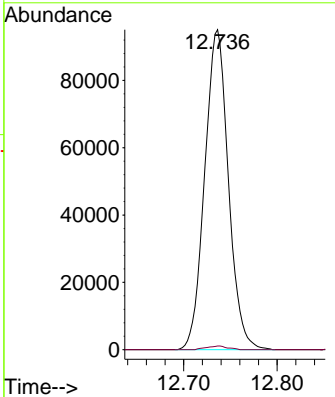
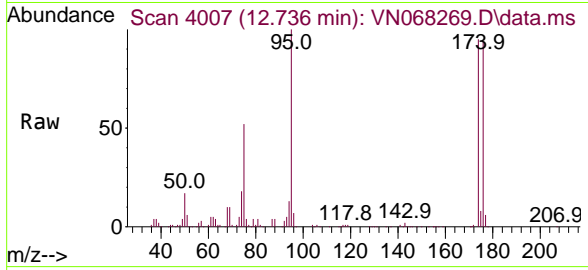




#76  
 1,2,3-Trichloropropane  
 Concen: 31.676 ug/l  
 RT: 12.736 min Scan# 4007  
 Delta R.T. -0.148 min  
 Lab File: VN068269.D  
 Acq: 23 Aug 2021 15:18

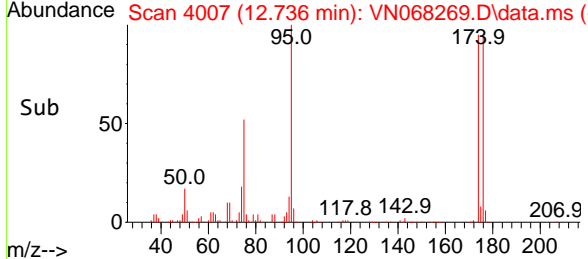
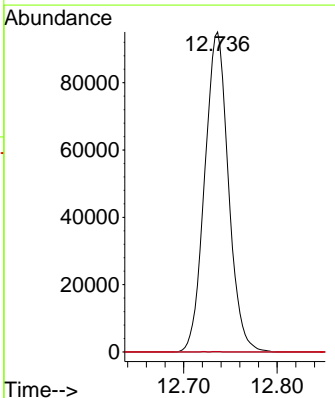
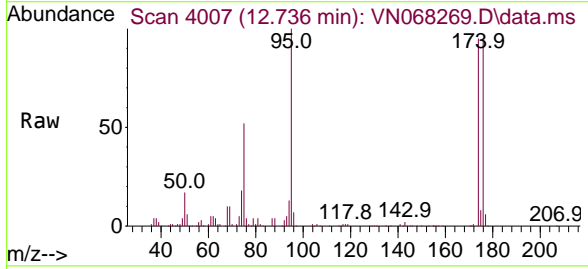
**Instrument :**  
 MSVOA\_N  
**ClientSampled :**  
 POST-MAEC-02

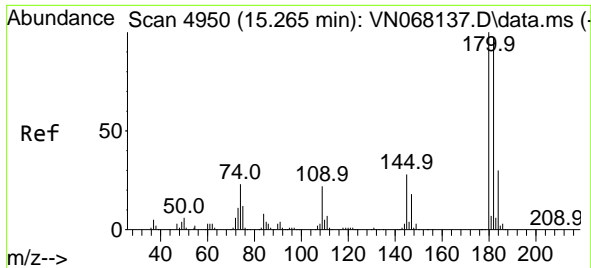
Tgt Ion: 75 Resp: 167740  
 Ion Ratio Lower Upper  
 75 100  
 77 1.0 0.0 0.0#



#81  
 trans-1,4-Dichloro-2-butene  
 Concen: 103.776 ug/l  
 RT: 12.736 min Scan# 4007  
 Delta R.T. 0.107 min  
 Lab File: VN068269.D  
 Acq: 23 Aug 2021 15:18

Tgt Ion: 75 Resp: 167740  
 Ion Ratio Lower Upper  
 75 100  
 53 0.1 87.6 131.4#  
 89 0.0 37.8 56.8#

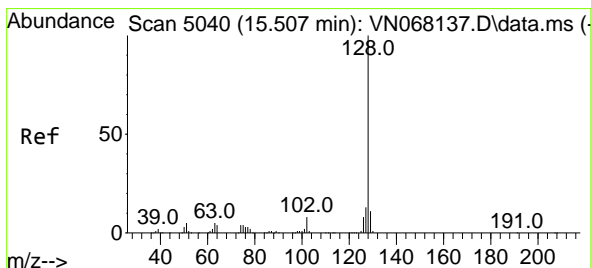
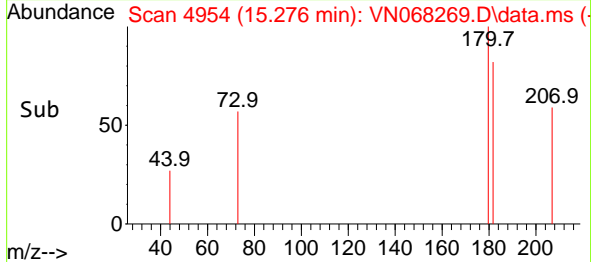
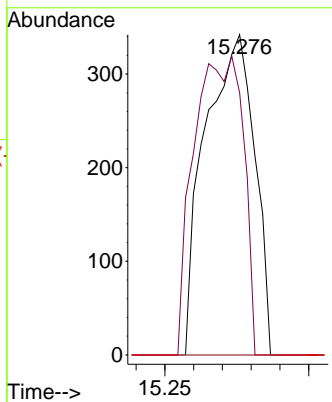
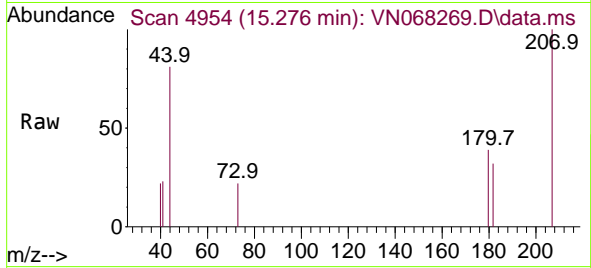




#93  
 1,2,4-Trichlorobenzene  
 Concen: 2.757 ug/l  
 RT: 15.276 min Scan# 4954  
 Delta R.T. 0.011 min  
 Lab File: VN068269.D  
 Acq: 23 Aug 2021 15:18

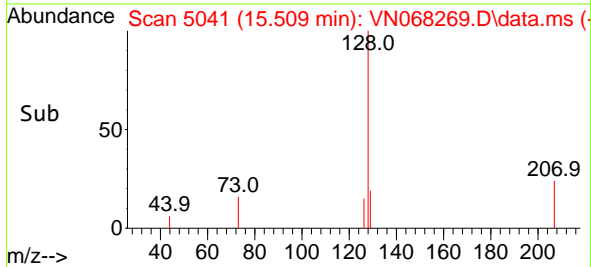
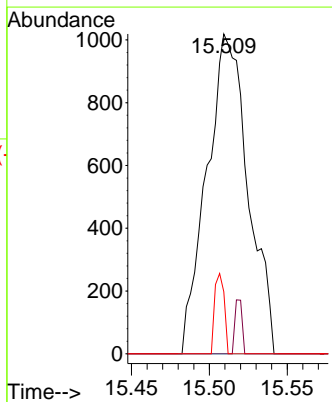
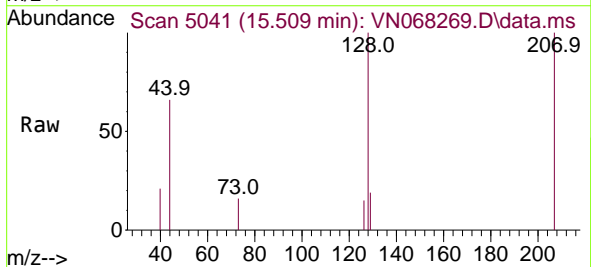
**Instrument :**  
 MSVOA\_N  
**ClientSampled :**  
 POST-MAEC-02

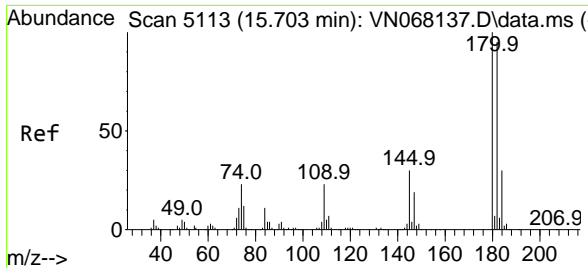
Tgt Ion	Resp	Lower	Upper
180	100		
182	93.1	47.5	142.5
145	0.0	17.2	51.6#



#95  
 Naphthalene  
 Concen: 3.485 ug/l  
 RT: 15.509 min Scan# 5041  
 Delta R.T. 0.002 min  
 Lab File: VN068269.D  
 Acq: 23 Aug 2021 15:18

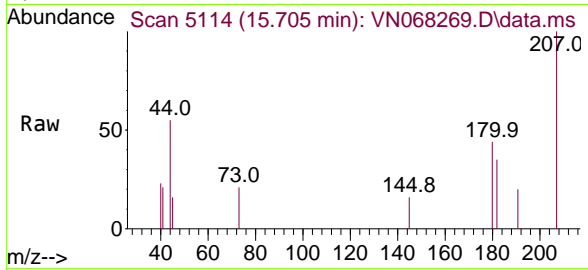
Tgt Ion	Resp	Lower	Upper
128	100		
127	2.9	10.6	15.8#
129	5.8	8.6	12.8#





#96  
 1,2,3-Trichlorobenzene  
 Concen: 2.938 ug/l  
 RT: 15.705 min Scan# 5114  
 Delta R.T. 0.002 min  
 Lab File: VN068269.D  
 Acq: 23 Aug 2021 15:18

Instrument :  
 MSVOA\_N  
 ClientSampled :  
 POST-MAEC-02



Tgt Ion:180 Resp: 570

Ion	Ratio	Lower	Upper
180	100		
182	92.5	47.8	143.3
145	9.3	18.2	54.6#

