

Data Path : Z:\voasrv\HPCHEM1\MSVOA\_N\Data\VN082322\  
 Data File : VN074064.D  
 Acq On : 23 Aug 2022 13:33  
 Operator : JC\MD  
 Sample : N4279-01  
 Misc : 5.0mL/MSVOA\_N/WATER  
 ALS Vial : 9 Sample Multiplier: 1

Instrument :  
 MSVOA\_N  
 ClientSampleId :  
 TT-TB-20220819

Quant Time: Aug 24 01:20:44 2022  
 Quant Method : Z:\voasrv\HPCHEM1\MSVOA\_N\methods\624N072722W.M  
 Quant Title : METHOD 624 VOLATILE ORGANIC ANALYSIS  
 QLast Update : Wed Jul 27 18:07:26 2022  
 Response via : Initial Calibration

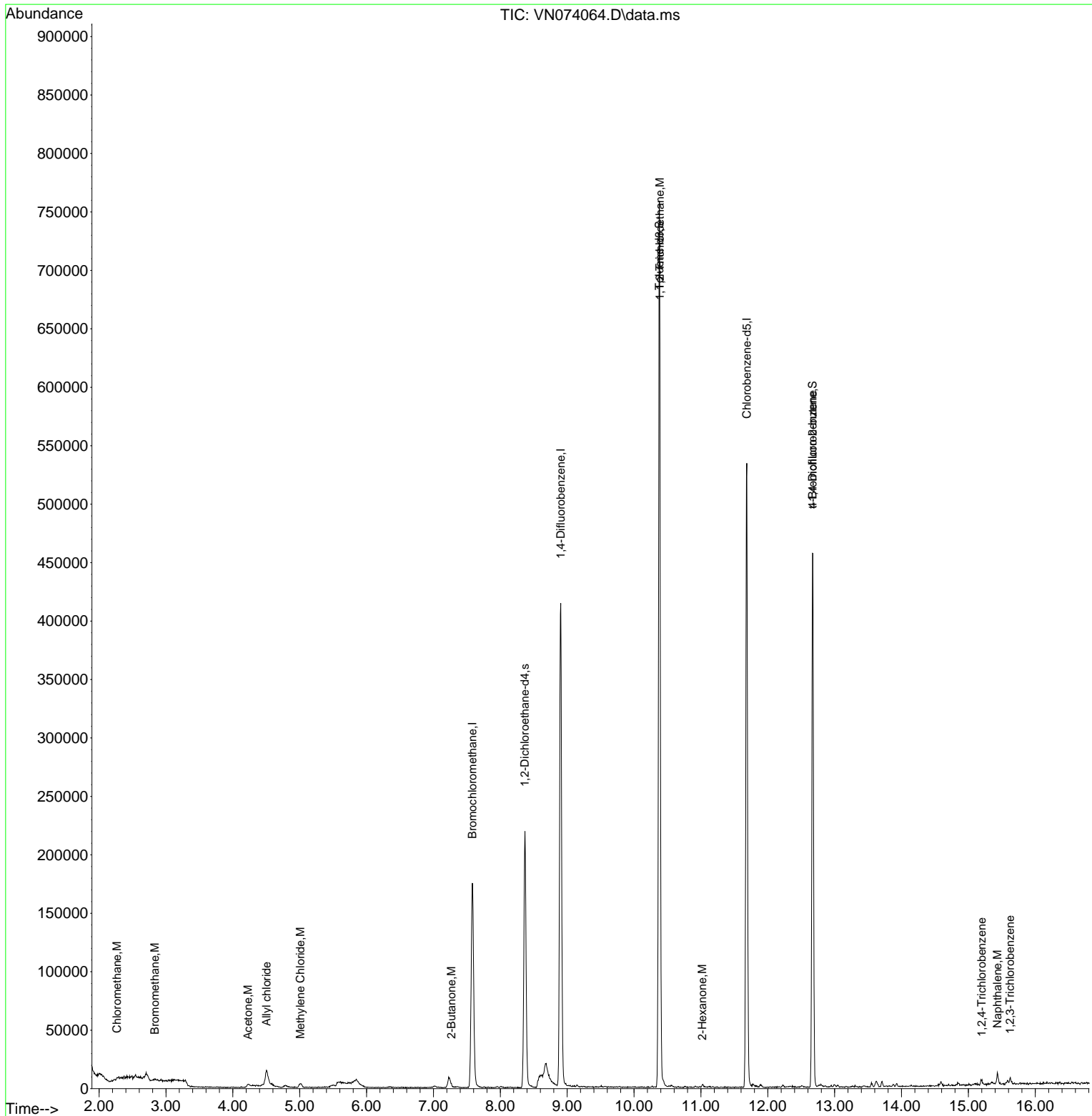
Compound	R.T.	QIon	Response	Conc	Units	Dev(Min)
-----						
Internal Standards						
1) Bromochloromethane	7.580	128	71742	30.000	ug/l	0.00
28) 1,4-Difluorobenzene	8.904	114	393236	30.000	ug/l	0.00
57) Chlorobenzene-d5	11.686	117	332876	30.000	ug/l	0.00
System Monitoring Compounds						
27) 1,2-Dichloroethane-d4	8.369	65	182819	29.473	ug/l	0.00
Spiked Amount	30.000	Range 91 - 110	Recovery	=	98.233%	
60) 4-Bromofluorobenzene	12.668	95	159504	27.062	ug/l	0.00
Spiked Amount	30.000	Range 63 - 112	Recovery	=	90.200%	
63) Toluene-d8	10.380	98	546457	29.154	ug/l	0.00
Spiked Amount	30.000	Range 91 - 112	Recovery	=	97.167%	
Target Compounds						
						Qvalue
3) Chloromethane	2.269	50	1290	0.200	ug/l	93
5) Bromomethane	2.834	94	1954	0.486	ug/l	90
15) Acetone	4.228	58	1443	1.473	ug/l #	43
17) Allyl chloride	4.504	41	1765	0.236	ug/l #	59
18) Methylene Chloride	5.010	84	1714	0.301	ug/l #	81
30) 2-Butanone	7.269	43	1890	0.372	ug/l #	77
50) 1,1,2-Trichloroethane	10.386	97	16002	2.621	ug/l #	1
59) 2-Hexanone	11.021	43	2135	0.322	ug/l #	91
77) t-1,4-Dichloro-2-butene	12.668	75	78871	30.682	ug/l #	8
89) 1,2,4-Trichlorobenzene	15.198	180	1788	0.294	ug/l #	86
91) Naphthalene	15.433	128	9098	0.456	ug/l #	96
92) 1,2,3-Trichlorobenzene	15.621	180	2089	0.335	ug/l	78
-----						

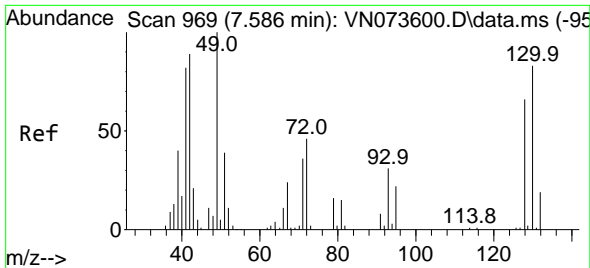
(#) = qualifier out of range (m) = manual integration (+) = signals summed

Data Path : Z:\voasrv\HPCHEM1\MSVOA\_N\Data\VN082322\  
 Data File : VN074064.D  
 Acq On : 23 Aug 2022 13:33  
 Operator : JC\MD  
 Sample : N4279-01  
 Misc : 5.0mL/MSVOA\_N/WATER  
 ALS Vial : 9 Sample Multiplier: 1

Instrument :  
 MSVOA\_N  
 ClientSampleId :  
 TT-TB-20220819

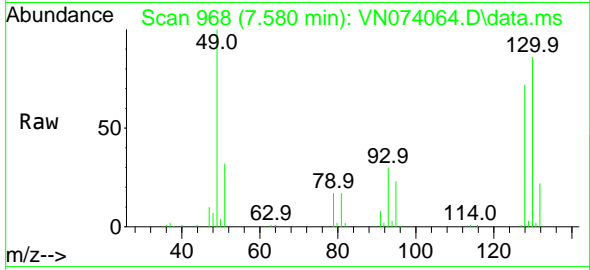
Quant Time: Aug 24 01:20:44 2022  
 Quant Method : Z:\voasrv\HPCHEM1\MSVOA\_N\methods\624N072722W.M  
 Quant Title : METHOD 624 VOLATILE ORGANIC ANALYSIS  
 QLast Update : Wed Jul 27 18:07:26 2022  
 Response via : Initial Calibration





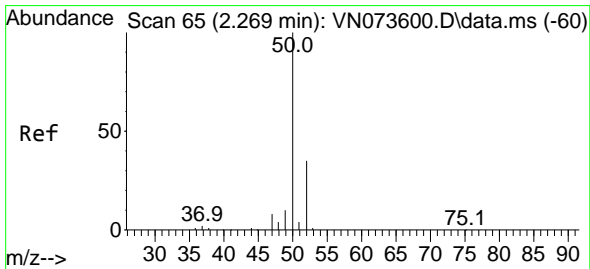
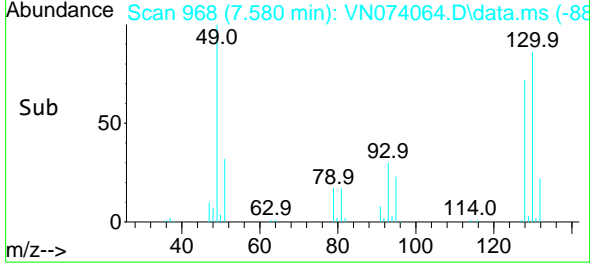
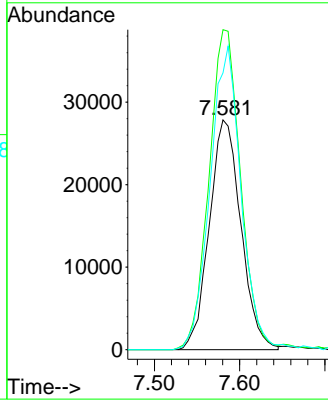
#1  
 Bromochloromethane  
 Concen: 30.000 ug/l  
 RT: 7.580 min Scan# 968  
 Delta R.T. -0.006 min  
 Lab File: VN074064.D  
 Acq: 23 Aug 2022 13:33

Instrument : MSVOA\_N  
 ClientSampleId : TT-TB-20220819



Tgt Ion:128 Resp: 71742

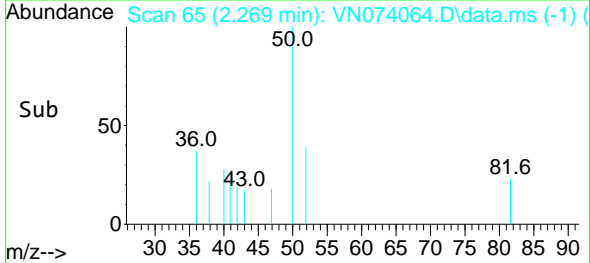
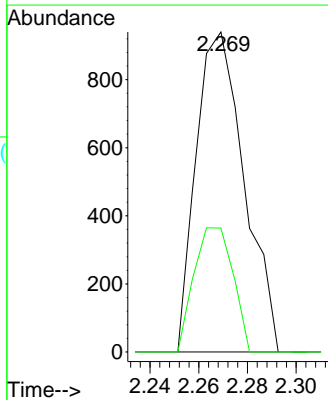
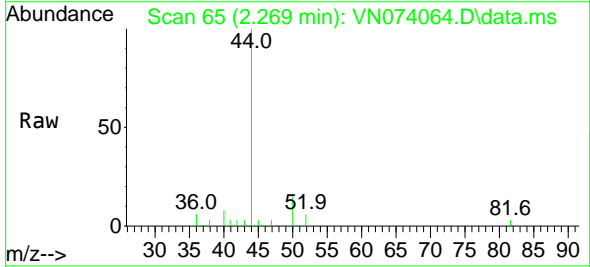
Ion	Ratio	Lower	Upper
128	100		
49	139.1	0.0	392.3
130	129.1	0.0	320.2

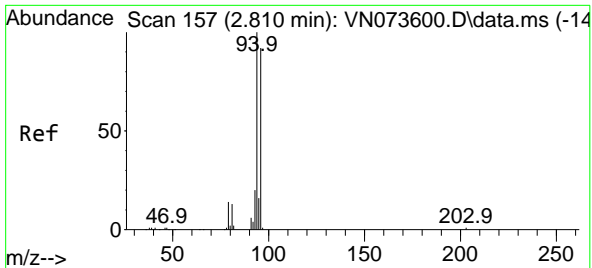


#3  
 Chloromethane  
 Concen: 0.200 ug/l  
 RT: 2.269 min Scan# 65  
 Delta R.T. -0.000 min  
 Lab File: VN074064.D  
 Acq: 23 Aug 2022 13:33

Tgt Ion: 50 Resp: 1290

Ion	Ratio	Lower	Upper
50	100		
52	38.7	27.8	41.6

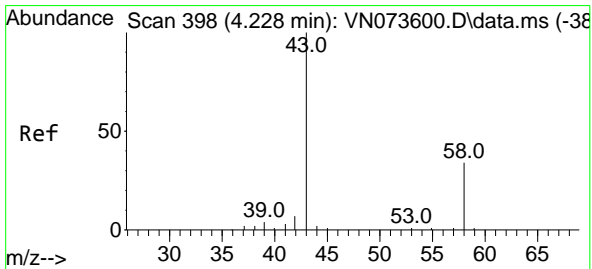
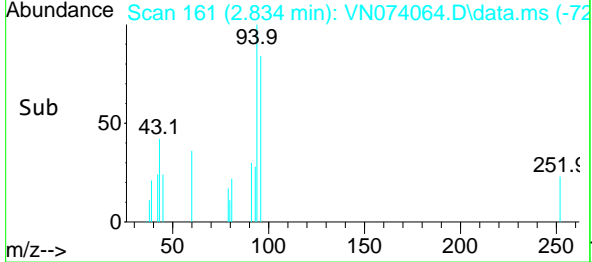
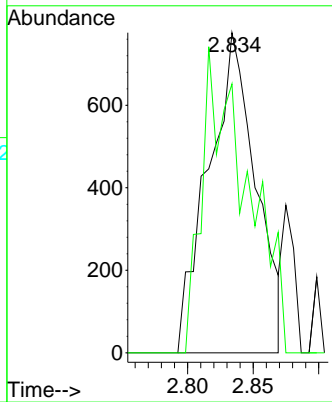
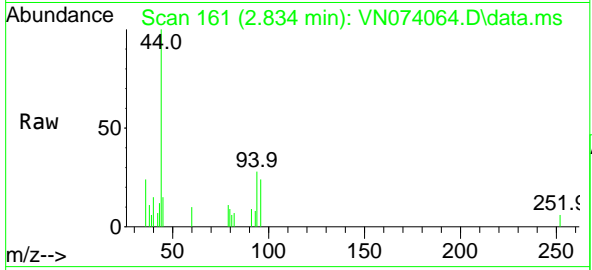




#5  
 Bromomethane  
 Concen: 0.486 ug/l  
 RT: 2.834 min Scan# 1  
 Delta R.T. 0.023 min  
 Lab File: VN074064.D  
 Acq: 23 Aug 2022 13:33

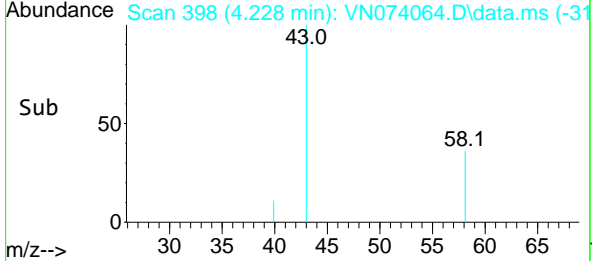
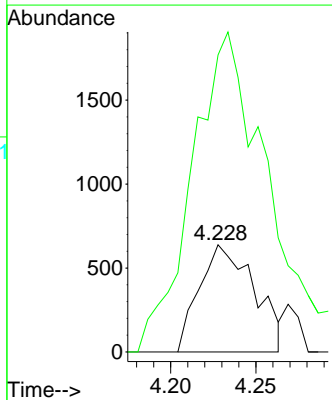
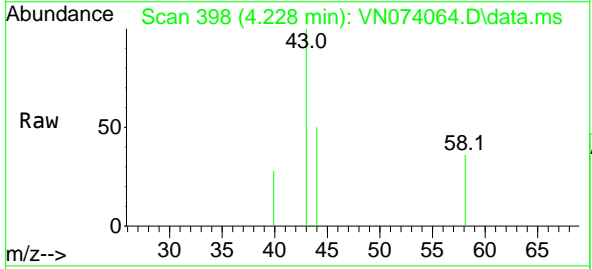
Instrument : MSVOA\_N  
 ClientSampleId : TT-TB-20220819

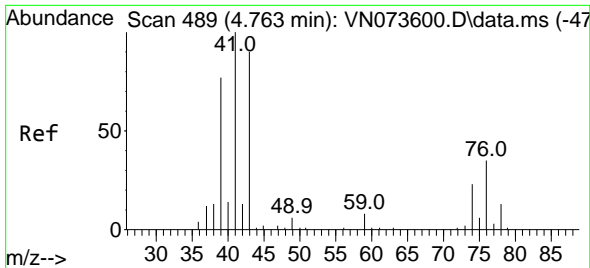
Tgt Ion: 94 Resp: 1954  
 Ion Ratio Lower Upper  
 94 100  
 96 84.0 75.2 112.8



#15  
 Acetone  
 Concen: 1.473 ug/l  
 RT: 4.228 min Scan# 398  
 Delta R.T. -0.000 min  
 Lab File: VN074064.D  
 Acq: 23 Aug 2022 13:33

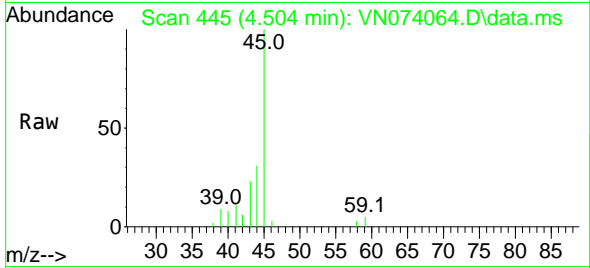
Tgt Ion: 58 Resp: 1443  
 Ion Ratio Lower Upper  
 58 100  
 43 203.0 256.6 384.8#





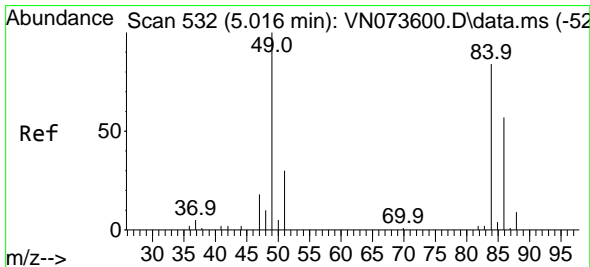
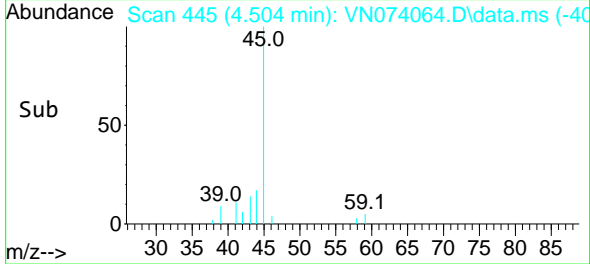
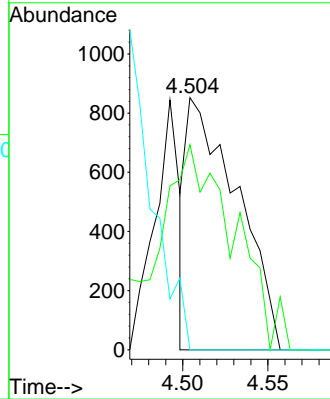
#17  
 Allyl chloride  
 Concen: 0.236 ug/l  
 RT: 4.504 min Scan# 445  
 Delta R.T. -0.259 min  
 Lab File: VN074064.D  
 Acq: 23 Aug 2022 13:33

Instrument : MSVOA\_N  
 ClientSampleId : TT-TB-20220819



Tgt Ion: 41 Resp: 1765

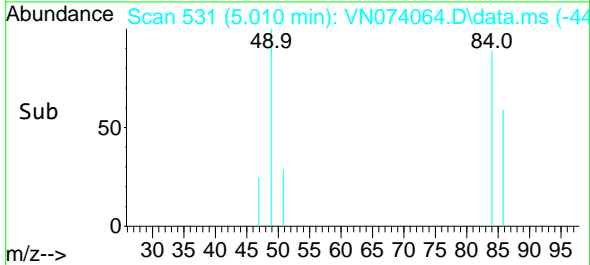
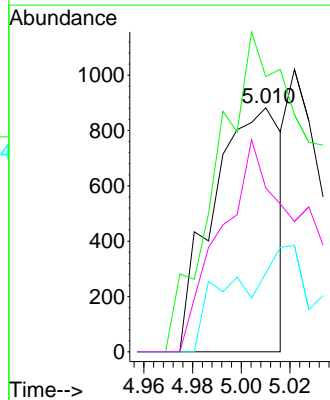
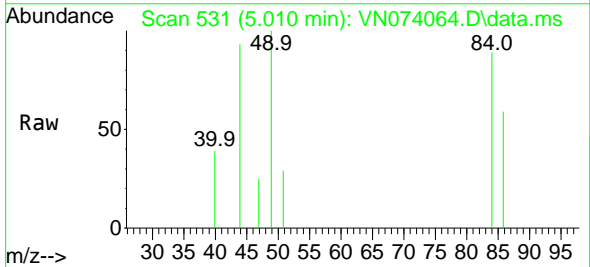
Ion	Ratio	Lower	Upper
41	100		
39	60.3	44.6	134.0
76	0.0	19.6	58.7

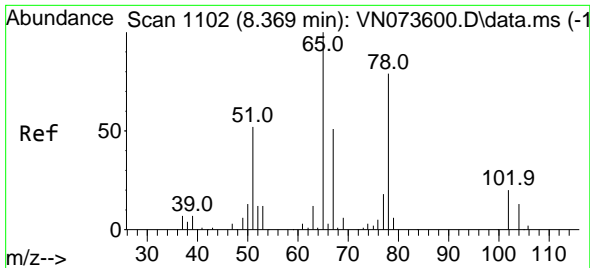


#18  
 Methylene Chloride  
 Concen: 0.301 ug/l  
 RT: 5.010 min Scan# 531  
 Delta R.T. -0.006 min  
 Lab File: VN074064.D  
 Acq: 23 Aug 2022 13:33

Tgt Ion: 84 Resp: 1714

Ion	Ratio	Lower	Upper
84	100		
49	80.8	91.4	137.0
51	32.2	29.4	44.0
86	67.1	51.1	76.7

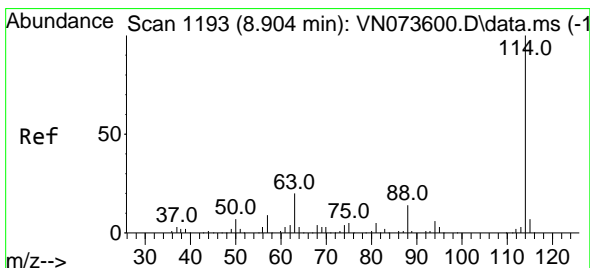
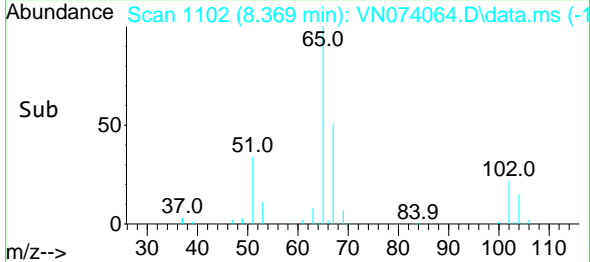
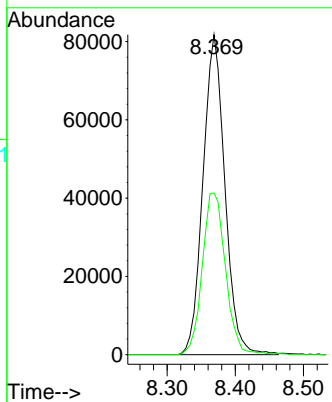
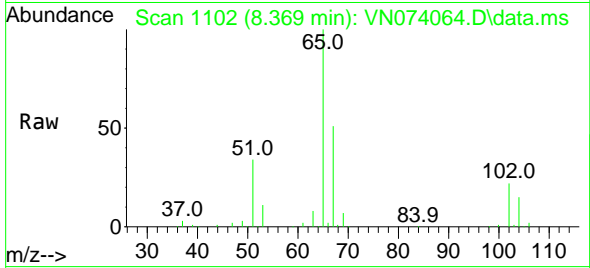




#27  
 1,2-Dichloroethane-d4  
 Concen: 29.473 ug/l  
 RT: 8.369 min Scan# 1102  
 Delta R.T. -0.000 min  
 Lab File: VN074064.D  
 Acq: 23 Aug 2022 13:33

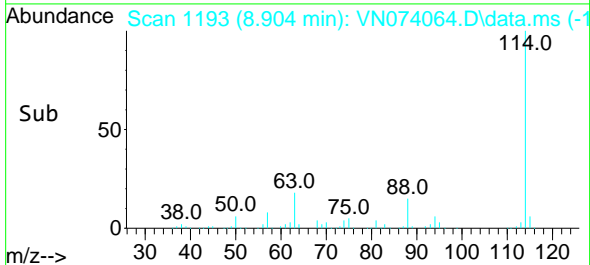
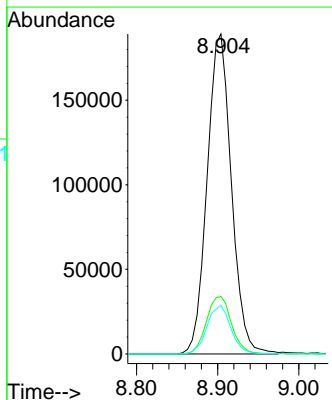
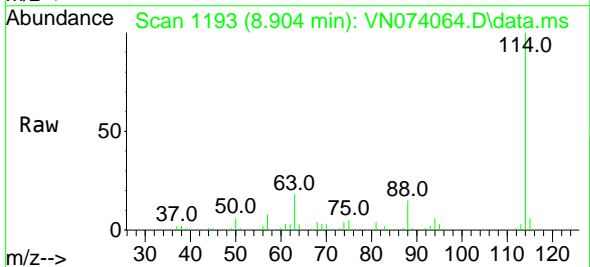
Instrument : MSVOA\_N  
 ClientSampleId : TT-TB-20220819

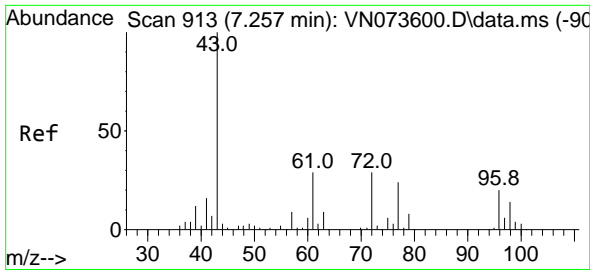
Tgt Ion: 65 Resp: 182819  
 Ion Ratio Lower Upper  
 65 100  
 67 53.5 40.2 60.2



#28  
 1,4-Difluorobenzene  
 Concen: 30.000 ug/l  
 RT: 8.904 min Scan# 1193  
 Delta R.T. -0.000 min  
 Lab File: VN074064.D  
 Acq: 23 Aug 2022 13:33

Tgt Ion: 114 Resp: 393236  
 Ion Ratio Lower Upper  
 114 100  
 63 18.5 15.8 23.6  
 88 14.9 11.6 17.4

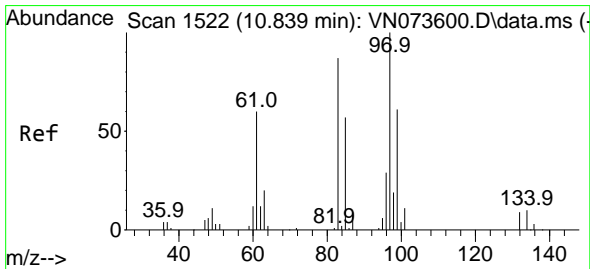
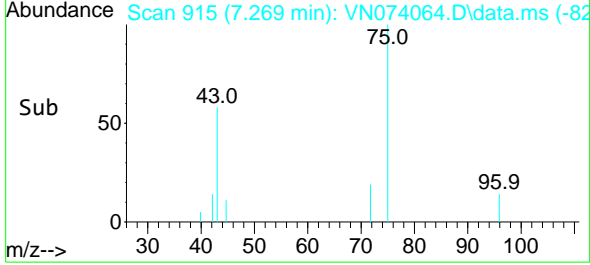
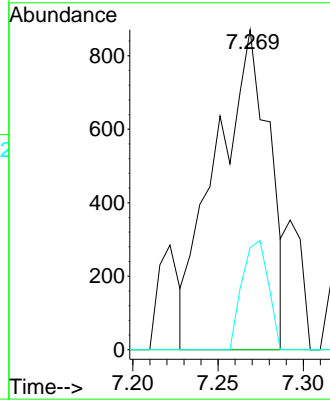
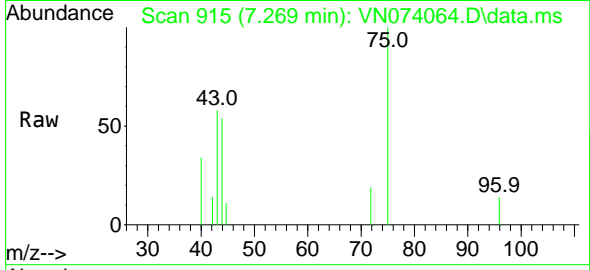




#30  
 2-Butanone  
 Concen: 0.372 ug/l  
 RT: 7.269 min Scan# 915  
 Delta R.T. 0.012 min  
 Lab File: VN074064.D  
 Acq: 23 Aug 2022 13:33

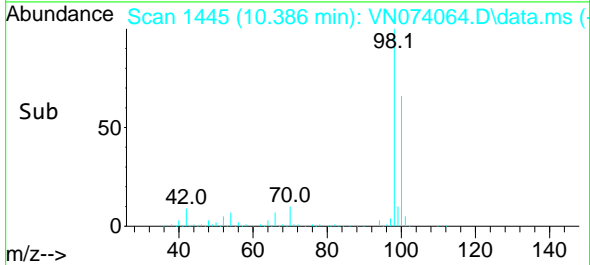
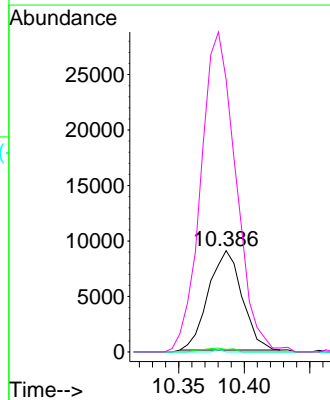
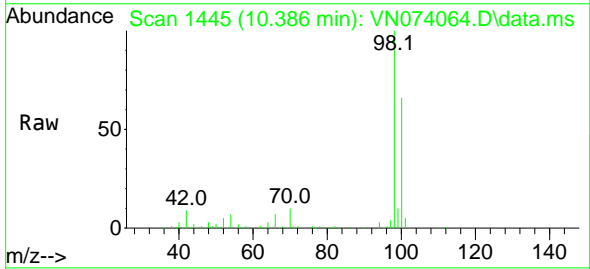
Instrument : MSVOA\_N  
 ClientSampleId : TT-TB-20220819

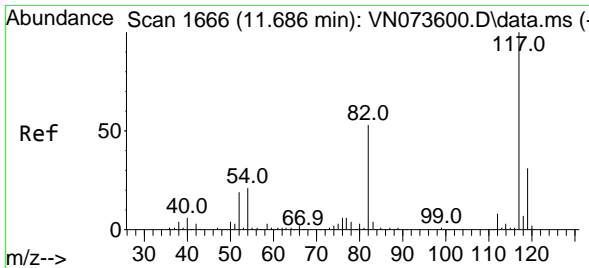
Tgt Ion: 43 Resp: 1890  
 Ion Ratio Lower Upper  
 43 100  
 57 0.0 6.7 10.1#  
 72 16.8 23.2 34.8#



#50  
 1,1,2-Trichloroethane  
 Concen: 2.621 ug/l  
 RT: 10.386 min Scan# 1445  
 Delta R.T. -0.453 min  
 Lab File: VN074064.D  
 Acq: 23 Aug 2022 13:33

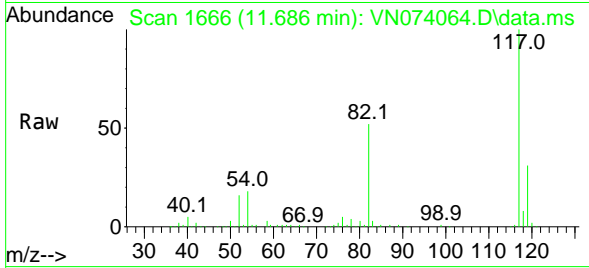
Tgt Ion: 97 Resp: 16002  
 Ion Ratio Lower Upper  
 97 100  
 83 2.6 67.2 100.8#  
 85 0.0 43.0 64.4#  
 99 270.1 49.0 73.4#





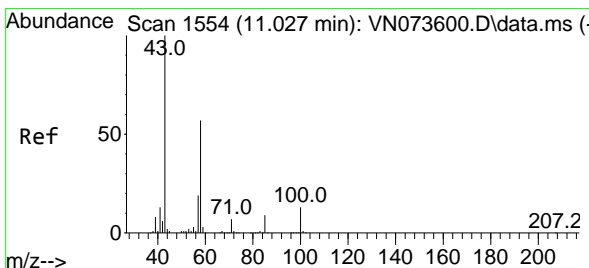
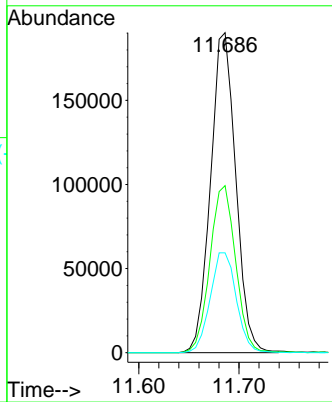
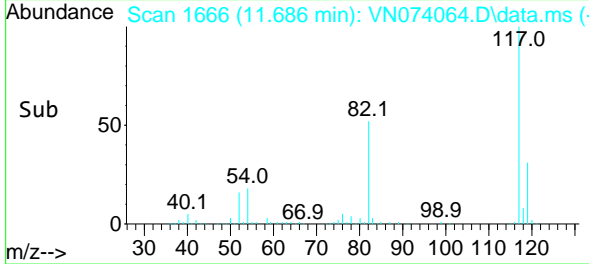
#57  
 Chlorobenzene-d5  
 Concen: 30.000 ug/l  
 RT: 11.686 min Scan# 11686  
 Delta R.T. -0.000 min  
 Lab File: VN074064.D  
 Acq: 23 Aug 2022 13:33

Instrument : MSVOA\_N  
 ClientSampleId : TT-TB-20220819

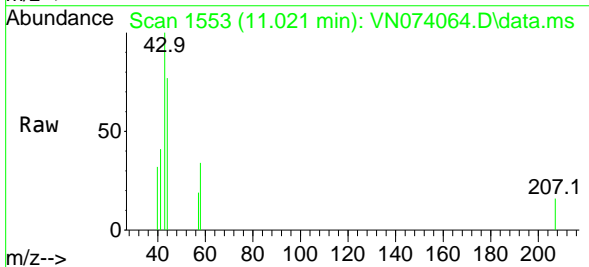


Tgt Ion: 117 Resp: 332876

Ion	Ratio	Lower	Upper
117	100		
82	53.3	43.6	65.4
119	32.4	25.8	38.6

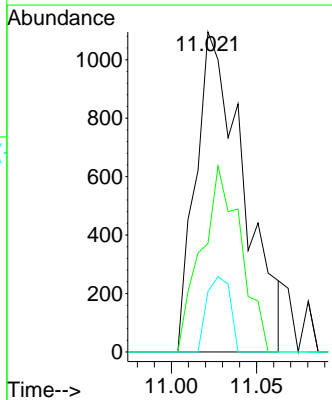
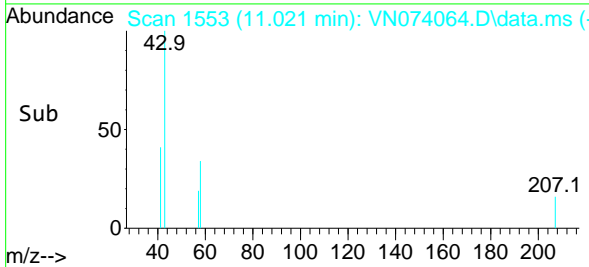


#59  
 2-Hexanone  
 Concen: 0.322 ug/l  
 RT: 11.021 min Scan# 1553  
 Delta R.T. -0.006 min  
 Lab File: VN074064.D  
 Acq: 23 Aug 2022 13:33

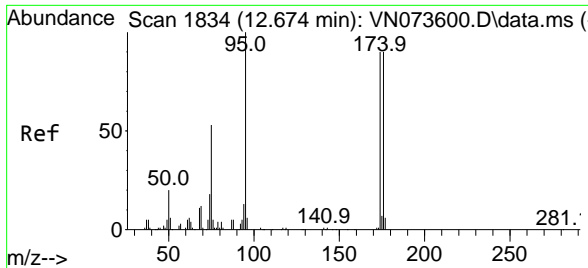


Tgt Ion: 43 Resp: 2135

Ion	Ratio	Lower	Upper
43	100		
58	47.7	42.2	63.2
57	11.5	15.0	22.4





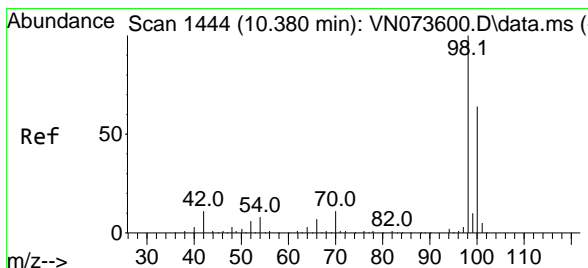
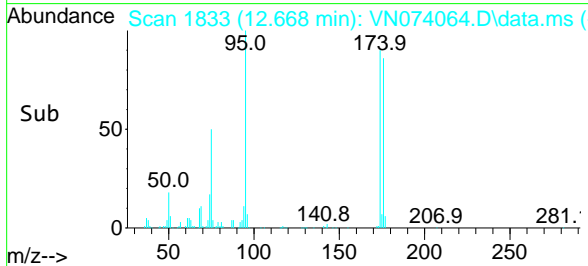
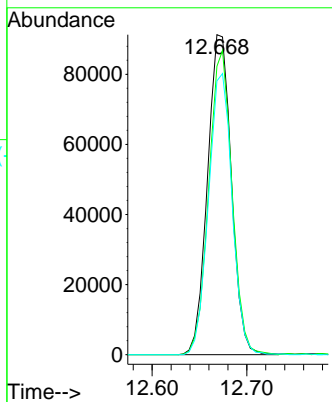
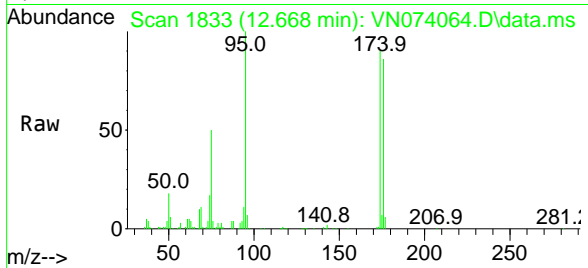


#60  
 4-Bromofluorobenzene  
 Concen: 27.062 ug/l  
 RT: 12.668 min Scan# 1833  
 Delta R.T. -0.006 min  
 Lab File: VN074064.D  
 Acq: 23 Aug 2022 13:33

Instrument : MSVOA\_N  
 ClientSampleId : TT-TB-20220819

Tgt Ion: 95 Resp: 159504

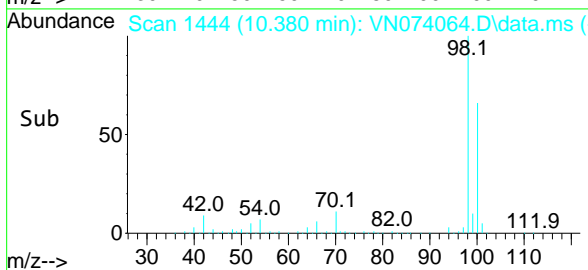
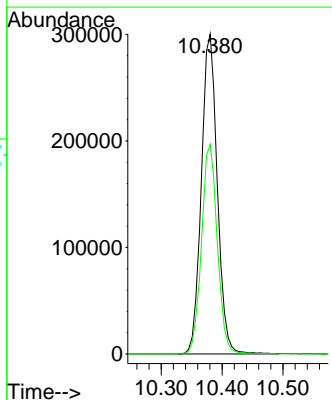
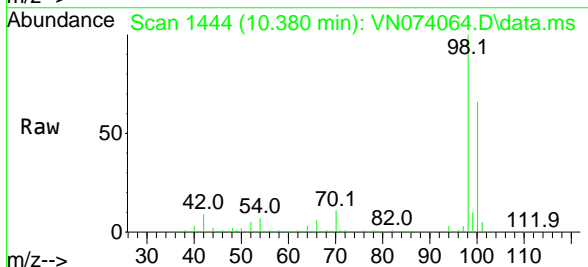
Ion	Ratio	Lower	Upper
95	100		
174	92.7	62.9	94.3
176	86.8	61.0	91.4

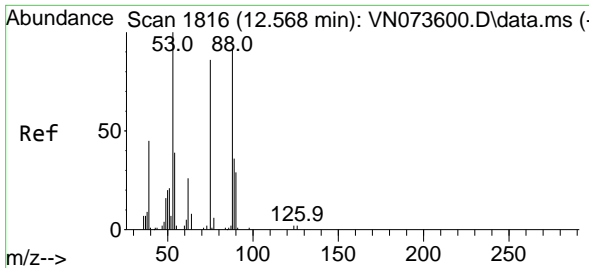


#63  
 Toluene-d8  
 Concen: 29.154 ug/l  
 RT: 10.380 min Scan# 1444  
 Delta R.T. -0.000 min  
 Lab File: VN074064.D  
 Acq: 23 Aug 2022 13:33

Tgt Ion: 98 Resp: 546457

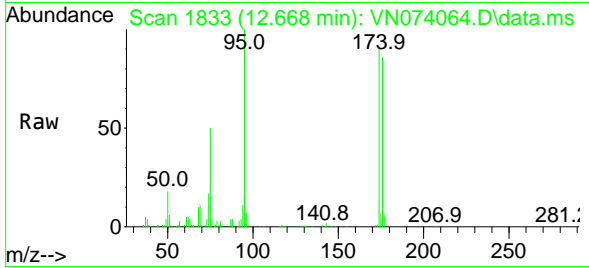
Ion	Ratio	Lower	Upper
98	100		
100	65.0	50.6	76.0



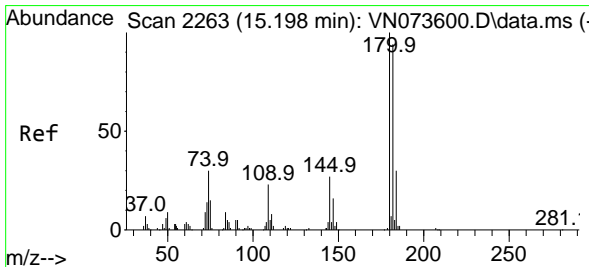
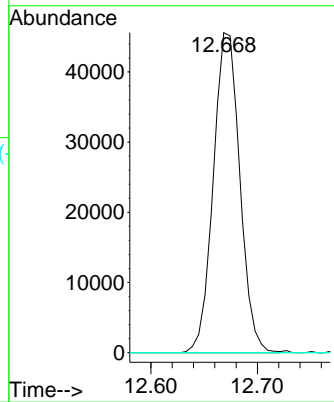
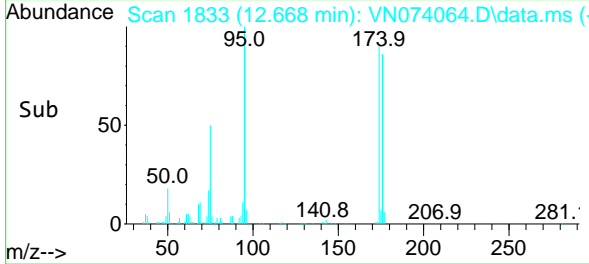


#77  
 t-1,4-Dichloro-2-butene  
 Concen: 30.682 ug/l  
 RT: 12.668 min Scan# 1833  
 Delta R.T. 0.100 min  
 Lab File: VN074064.D  
 Acq: 23 Aug 2022 13:33

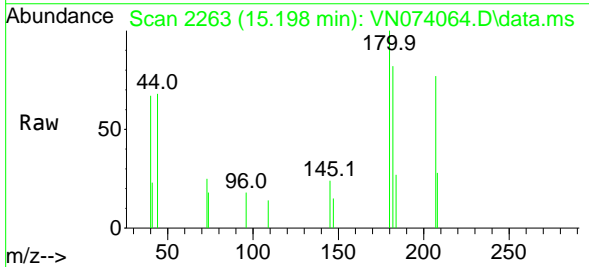
Instrument : MSVOA\_N  
 ClientSampleId : TT-TB-20220819



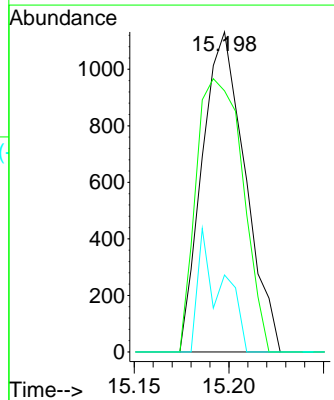
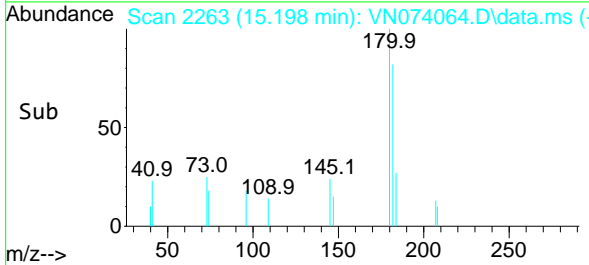
Tgt Ion: 75 Resp: 78871  
 Ion Ratio Lower Upper  
 75 100  
 53 0.0 51.8 155.5#  
 89 0.0 22.9 68.7#

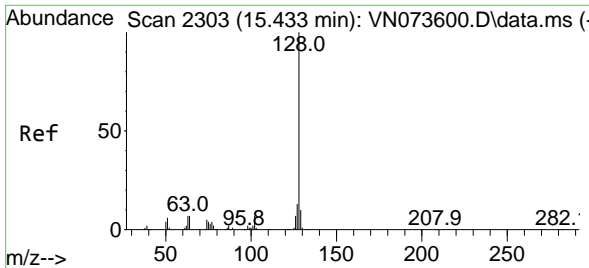


#89  
 1,2,4-Trichlorobenzene  
 Concen: 0.294 ug/l  
 RT: 15.198 min Scan# 2263  
 Delta R.T. -0.000 min  
 Lab File: VN074064.D  
 Acq: 23 Aug 2022 13:33



Tgt Ion: 180 Resp: 1788  
 Ion Ratio Lower Upper  
 180 100  
 182 92.6 77.7 116.5  
 145 9.8 26.6 39.8#

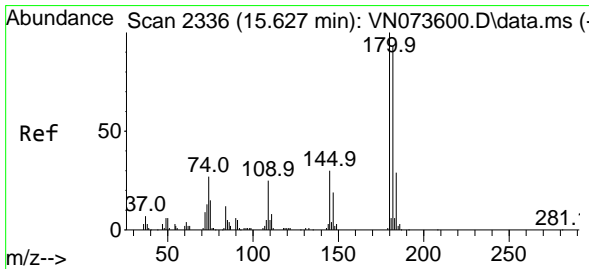
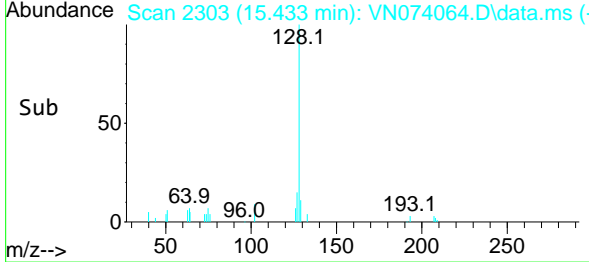
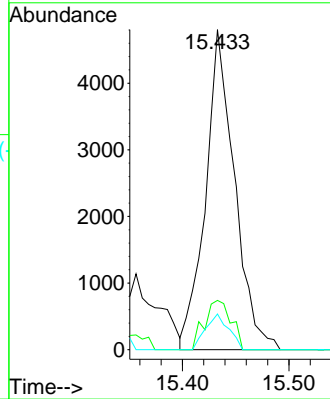
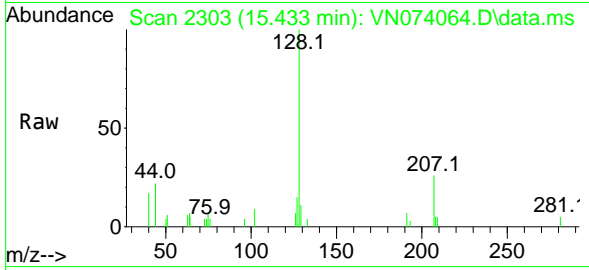




#91  
 Naphthalene  
 Concen: 0.456 ug/l  
 RT: 15.433 min Scan# 21  
 Delta R.T. -0.000 min  
 Lab File: VN074064.D  
 Acq: 23 Aug 2022 13:33

Instrument : MSVOA\_N  
 ClientSampleId : TT-TB-20220819

Tgt Ion	Resp	Lower	Upper
128	100		
127	14.2	10.7	16.1
129	8.9	9.0	13.6#



#92  
 1,2,3-Trichlorobenzene  
 Concen: 0.335 ug/l  
 RT: 15.621 min Scan# 2335  
 Delta R.T. -0.006 min  
 Lab File: VN074064.D  
 Acq: 23 Aug 2022 13:33

Tgt Ion	Resp	Lower	Upper
180	100		
182	113.3	0.0	190.0
145	16.1	0.0	67.8

