

Data Path : Z:\voasrv\HPCHEM1\MSVOA\_N\Data\VN082422\  
 Data File : VN074089.D  
 Acq On : 24 Aug 2022 14:12  
 Operator : JC\MD  
 Sample : N4244-03  
 Misc : 5.0mL/MSVOA\_N/WATER  
 ALS Vial : 10 Sample Multiplier: 1

Instrument :  
 MSVOA\_N  
 ClientSampleId :  
 MW-105S

Quant Time: Aug 25 07:54:06 2022  
 Quant Method : Z:\voasrv\HPCHEM1\MSVOA\_N\methods\82N081522W.M  
 Quant Title : SW846 8260  
 QLast Update : Tue Aug 16 00:45:21 2022  
 Response via : Initial Calibration

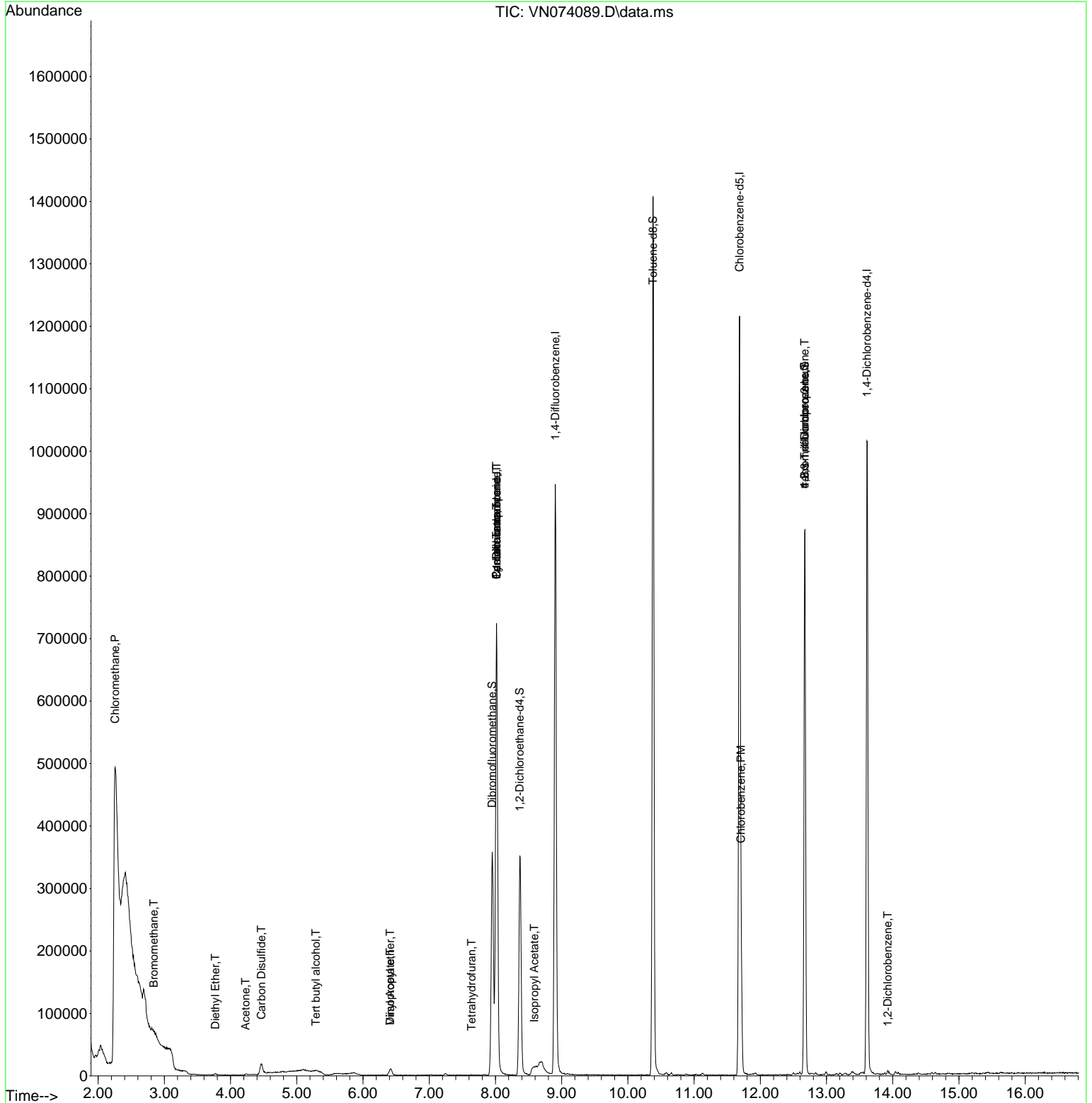
Compound	R.T.	QIon	Response	Conc	Units	Dev(Min)
-----						
Internal Standards						
1) Pentafluorobenzene	8.016	168	590728	50.000	ug/l	0.00
34) 1,4-Difluorobenzene	8.904	114	891780	50.000	ug/l	0.00
63) Chlorobenzene-d5	11.686	117	722652	50.000	ug/l	0.00
72) 1,4-Dichlorobenzene-d4	13.610	152	302143	50.000	ug/l	0.00
System Monitoring Compounds						
33) 1,2-Dichloroethane-d4	8.369	65	296733	51.573	ug/l	0.00
Spiked Amount	50.000	Range 74 - 125	Recovery	=	103.140%	
35) Dibromofluoromethane	7.951	113	265461	50.335	ug/l	0.00
Spiked Amount	50.000	Range 75 - 124	Recovery	=	100.660%	
50) Toluene-d8	10.380	98	987393	48.342	ug/l	0.00
Spiked Amount	50.000	Range 86 - 113	Recovery	=	96.680%	
62) 4-Bromofluorobenzene	12.668	95	301486	44.475	ug/l	0.00
Spiked Amount	50.000	Range 83 - 123	Recovery	=	88.940%	
Target Compounds						
						Qvalue
3) Chloromethane	2.257	50	37222	7.146	ug/l #	43
5) Bromomethane	2.840	94	953	0.228	ug/l	96
8) Diethyl Ether	3.769	74	949	0.296	ug/l	62
11) Tert butyl alcohol	5.287	59	2632	2.045	ug/l #	80
16) Acetone	4.228	43	3352	1.235	ug/l #	85
17) Carbon Disulfide	4.463	76	45741	4.126	ug/l #	94
18) Methyl Acetate	4.787	43	3756	Below Cal	#	63
22) Diisopropyl ether	6.410	45	12698	0.867	ug/l	98
23) Vinyl Acetate	6.410	43	6774	0.540	ug/l #	68
29) Tetrahydrofuran	7.639	42	644	0.233	ug/l #	36
31) Cyclohexane	8.016	56	10117	1.261	ug/l #	1
36) 1,1-Dichloropropene	8.016	75	40412	5.517	ug/l #	49
38) Carbon Tetrachloride	8.016	117	53606	6.402	ug/l #	17
43) Isopropyl Acetate	8.586	43	14536	1.150	ug/l #	53
65) Chlorobenzene	11.710	112	111875	7.284	ug/l	99
76) 1,2,3-Trichloropropane	12.668	75	146298	23.296	ug/l #	1
81) trans-1,4-Dichloro-2-b...	12.668	75	146298	66.258	ug/l #	11
91) 1,2-Dichlorobenzene	13.921	146	3153	0.296	ug/l	94
-----						

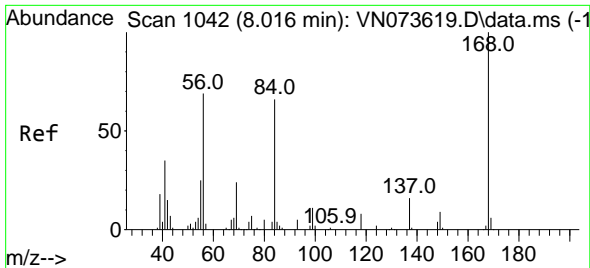
(#) = qualifier out of range (m) = manual integration (+) = signals summed

Data Path : Z:\voasrv\HPCHEM1\MSVOA\_N\Data\VN082422\  
 Data File : VN074089.D  
 Acq On : 24 Aug 2022 14:12  
 Operator : JC\MD  
 Sample : N4244-03  
 Misc : 5.0mL/MSVOA\_N/WATER  
 ALS Vial : 10 Sample Multiplier: 1

Instrument :  
 MSVOA\_N  
 ClientSampleId :  
 MW-105S

Quant Time: Aug 25 07:54:06 2022  
 Quant Method : Z:\voasrv\HPCHEM1\MSVOA\_N\methods\82N081522W.M  
 Quant Title : SW846 8260  
 QLast Update : Tue Aug 16 00:45:21 2022  
 Response via : Initial Calibration

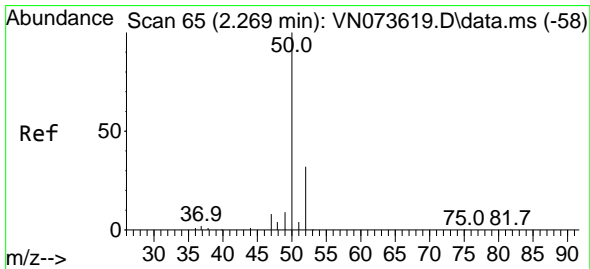
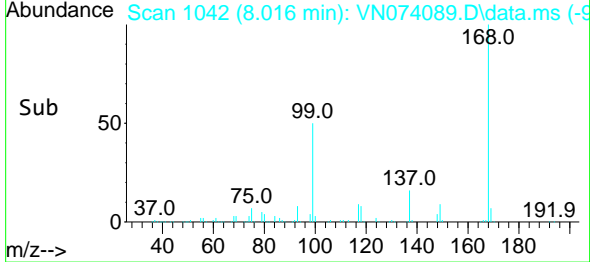
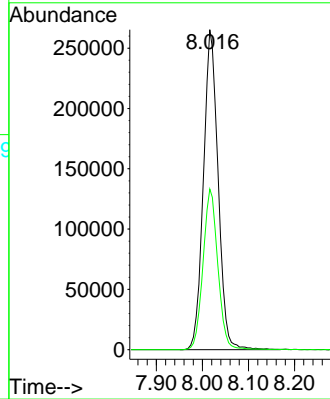
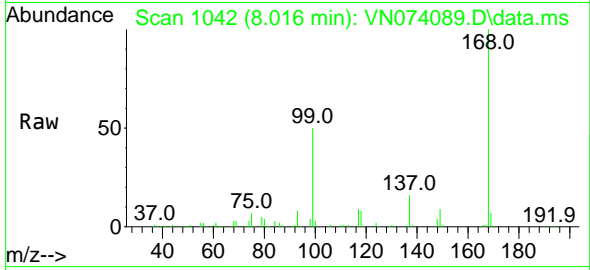




#1  
 Pentafluorobenzene  
 Concen: 50.000 ug/l  
 RT: 8.016 min Scan# 10  
 Delta R.T. -0.000 min  
 Lab File: VN074089.D  
 Acq: 24 Aug 2022 14:12

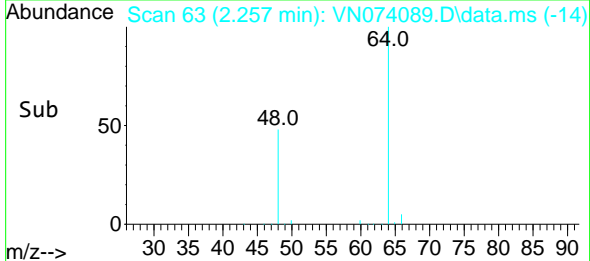
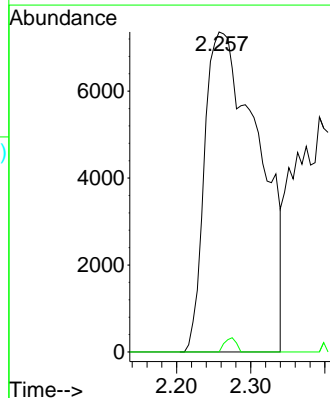
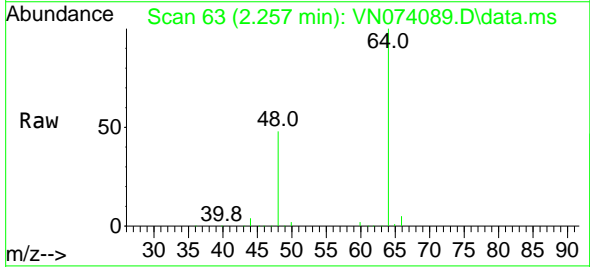
Instrument :  
 MSVOA\_N  
 ClientSampleId :  
 MW-105S

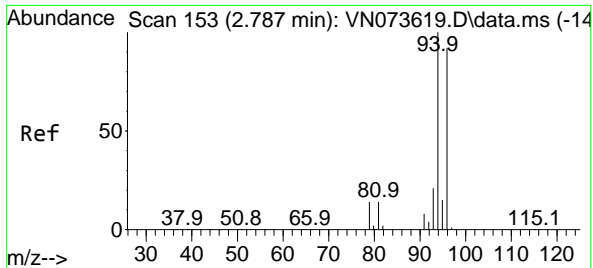
Tgt Ion:168 Resp: 590728  
 Ion Ratio Lower Upper  
 168 100  
 99 50.2 42.3 63.5



#3  
 Chloromethane  
 Concen: 7.146 ug/l  
 RT: 2.257 min Scan# 63  
 Delta R.T. -0.012 min  
 Lab File: VN074089.D  
 Acq: 24 Aug 2022 14:12

Tgt Ion: 50 Resp: 37222  
 Ion Ratio Lower Upper  
 50 100  
 52 0.0 25.7 38.5#

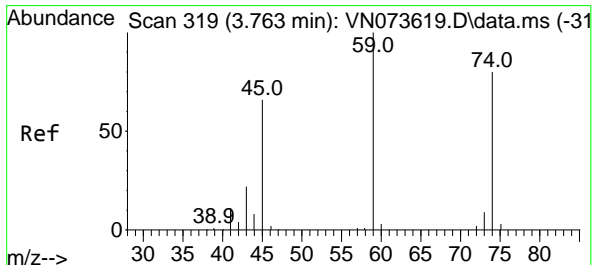
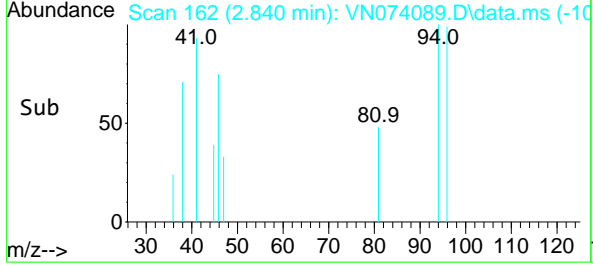
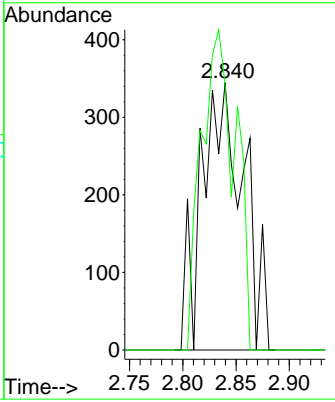
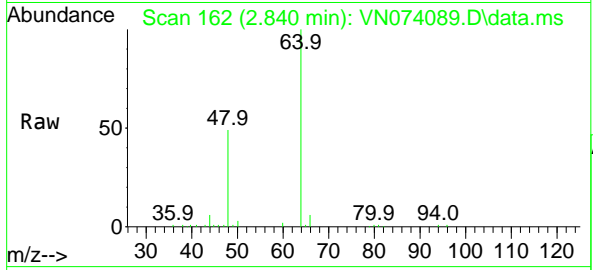




#5  
 Bromomethane  
 Concen: 0.228 ug/l  
 RT: 2.840 min Scan# 11  
 Delta R.T. 0.053 min  
 Lab File: VN074089.D  
 Acq: 24 Aug 2022 14:12

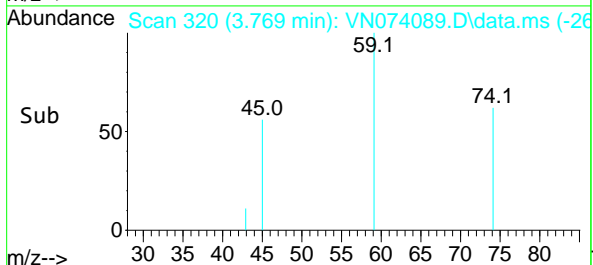
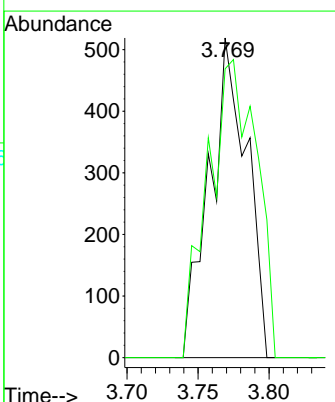
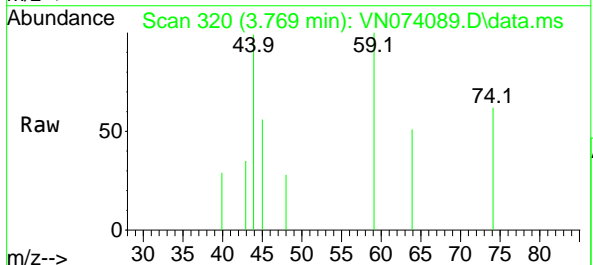
Instrument : MSVOA\_N  
 ClientSampleId : MW-105S

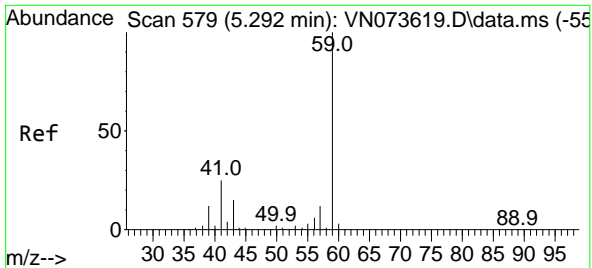
Tgt Ion: 94 Resp: 953  
 Ion Ratio Lower Upper  
 94 100  
 96 99.1 76.0 114.0



#8  
 Diethyl Ether  
 Concen: 0.296 ug/l  
 RT: 3.769 min Scan# 320  
 Delta R.T. 0.006 min  
 Lab File: VN074089.D  
 Acq: 24 Aug 2022 14:12

Tgt Ion: 74 Resp: 949  
 Ion Ratio Lower Upper  
 74 100  
 45 120.4 42.9 128.5

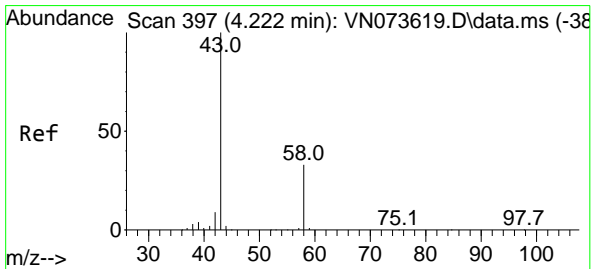
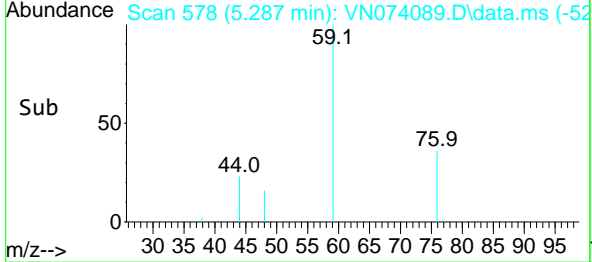
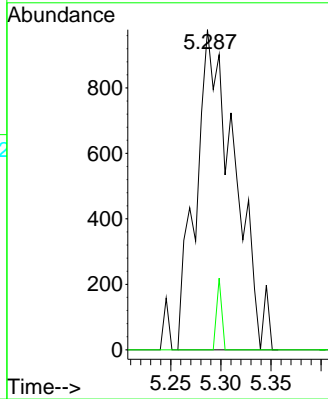
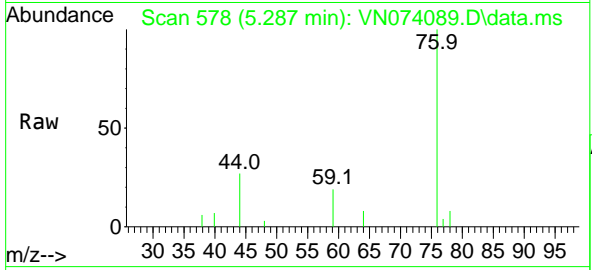




#11  
 Tert butyl alcohol  
 Concen: 2.045 ug/l  
 RT: 5.287 min Scan# 51  
 Delta R.T. -0.005 min  
 Lab File: VN074089.D  
 Acq: 24 Aug 2022 14:12

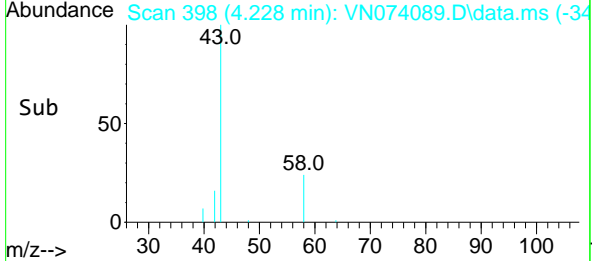
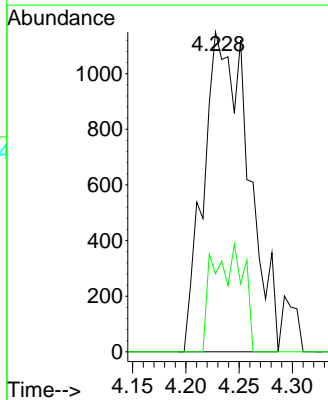
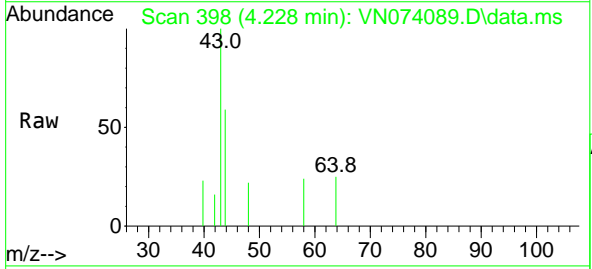
Instrument : MSVOA\_N  
 ClientSampleId : MW-105S

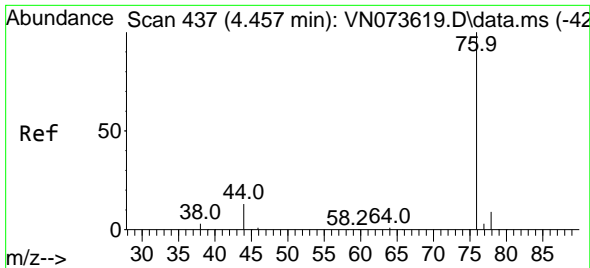
Tgt Ion: 59 Resp: 2632  
 Ion Ratio Lower Upper  
 59 100  
 57 2.9 8.3 12.5#



#16  
 Acetone  
 Concen: 1.235 ug/l  
 RT: 4.228 min Scan# 398  
 Delta R.T. 0.006 min  
 Lab File: VN074089.D  
 Acq: 24 Aug 2022 14:12

Tgt Ion: 43 Resp: 3352  
 Ion Ratio Lower Upper  
 43 100  
 58 24.3 26.0 39.0#

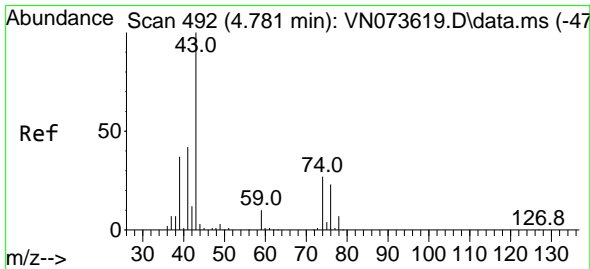
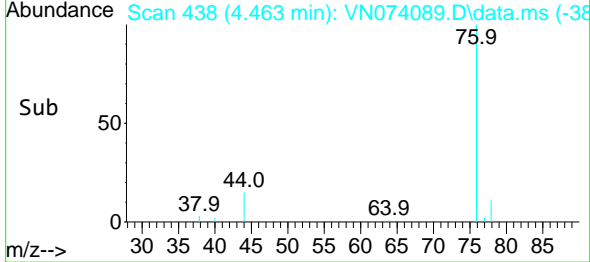
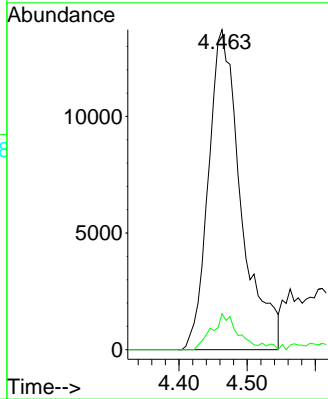
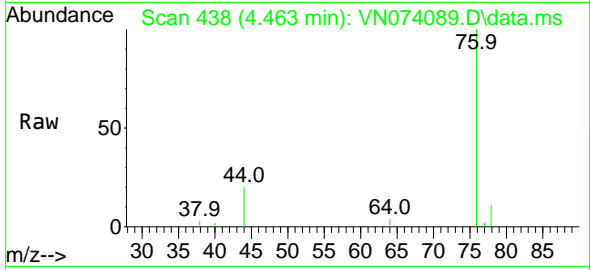




#17  
 Carbon Disulfide  
 Concen: 4.126 ug/l  
 RT: 4.463 min Scan# 411  
 Delta R.T. 0.006 min  
 Lab File: VN074089.D  
 Acq: 24 Aug 2022 14:12

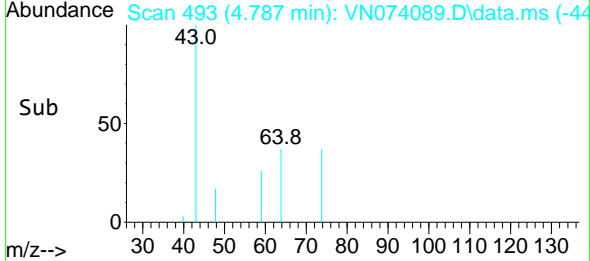
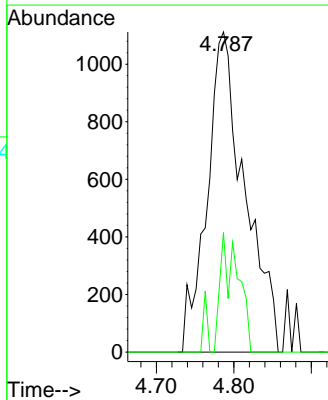
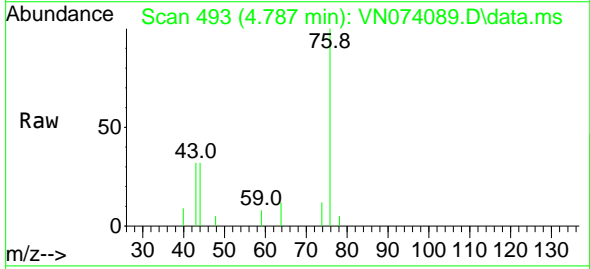
Instrument : MSVOA\_N  
 Client SampleId : MW-105S

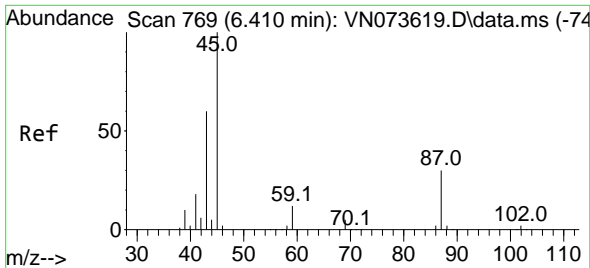
Tgt Ion: 76 Resp: 45741  
 Ion Ratio Lower Upper  
 76 100  
 78 11.3 7.2 10.8#



#18  
 Methyl Acetate  
 Concen: Below Cal  
 RT: 4.787 min Scan# 493  
 Delta R.T. 0.006 min  
 Lab File: VN074089.D  
 Acq: 24 Aug 2022 14:12

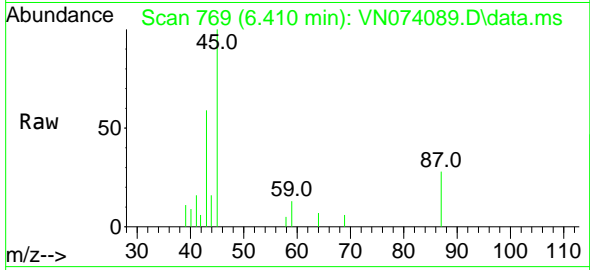
Tgt Ion: 43 Resp: 3756  
 Ion Ratio Lower Upper  
 43 100  
 74 7.6 21.6 32.4#





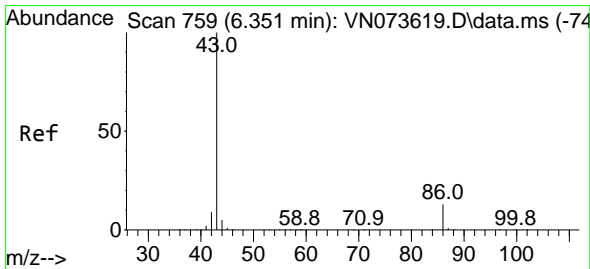
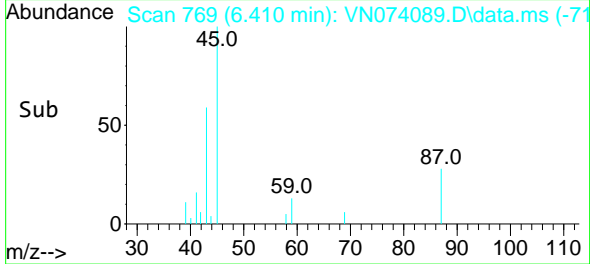
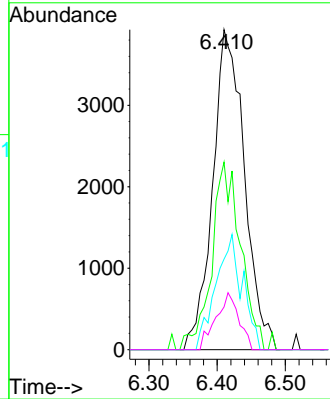
#22  
 Diisopropyl ether  
 Concen: 0.867 ug/l  
 RT: 6.410 min Scan# 769  
 Delta R.T. -0.000 min  
 Lab File: VN074089.D  
 Acq: 24 Aug 2022 14:12

Instrument : MSVOA\_N  
 ClientSampleId : MW-105S

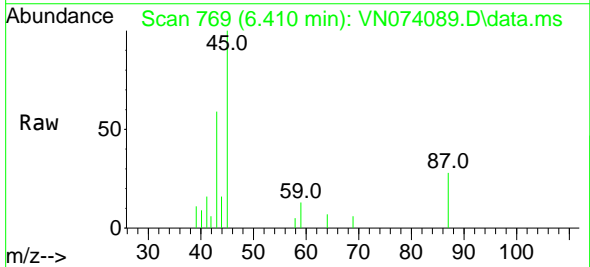


Tgt Ion: 45 Resp: 12698

Ion	Ratio	Lower	Upper
45	100		
43	58.6	46.6	70.0
87	28.3	24.3	36.5
59	13.4	9.6	14.4

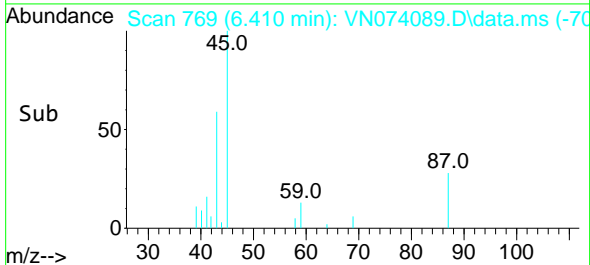
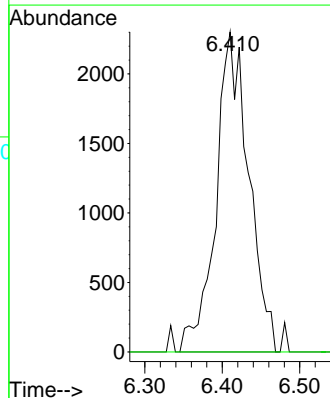


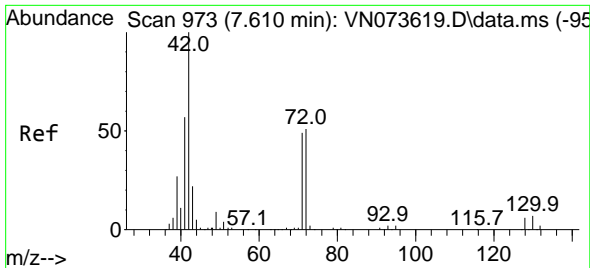
#23  
 Vinyl Acetate  
 Concen: 0.540 ug/l  
 RT: 6.410 min Scan# 769  
 Delta R.T. 0.059 min  
 Lab File: VN074089.D  
 Acq: 24 Aug 2022 14:12



Tgt Ion: 43 Resp: 6774

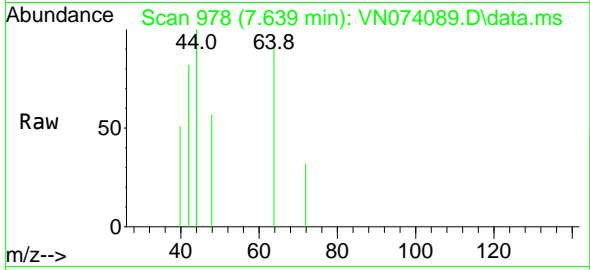
Ion	Ratio	Lower	Upper
43	100		
86	0.0	10.0	15.0





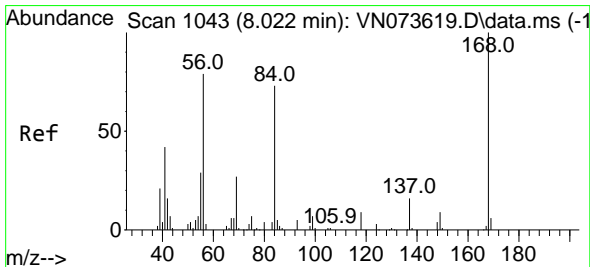
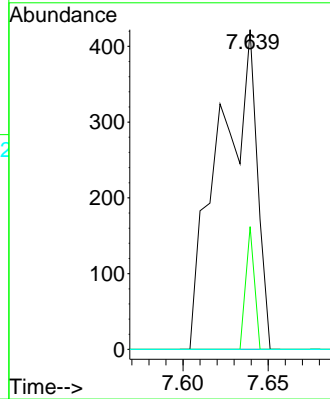
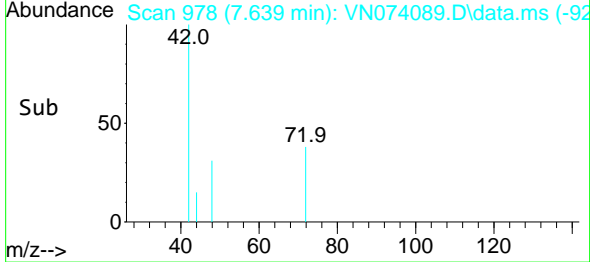
#29  
 Tetrahydrofuran  
 Concen: 0.233 ug/l  
 RT: 7.639 min Scan# 91  
 Delta R.T. 0.029 min  
 Lab File: VN074089.D  
 Acq: 24 Aug 2022 14:12

Instrument : MSVOA\_N  
 ClientSampleId : MW-105S

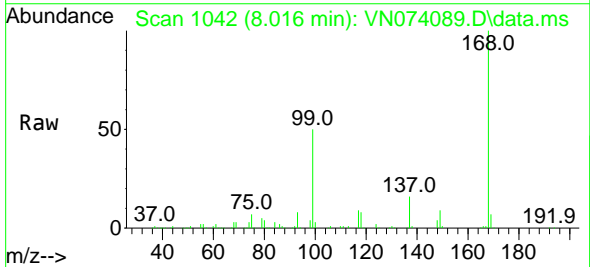


Tgt Ion: 42 Resp: 644

Ion	Ratio	Lower	Upper
42	100		
72	8.9	39.7	59.5#
71	0.0	36.6	55.0#

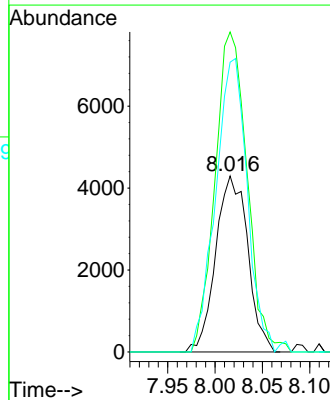
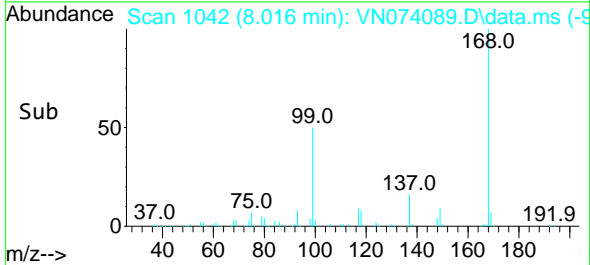


#31  
 Cyclohexane  
 Concen: 1.261 ug/l  
 RT: 8.016 min Scan# 1042  
 Delta R.T. -0.006 min  
 Lab File: VN074089.D  
 Acq: 24 Aug 2022 14:12

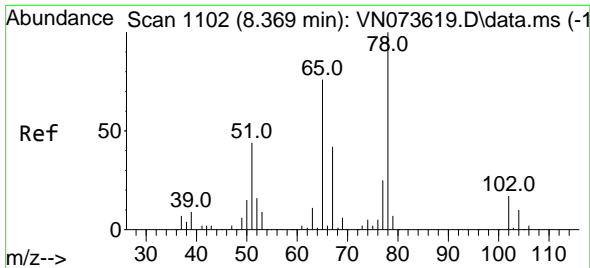


Tgt Ion: 56 Resp: 10117

Ion	Ratio	Lower	Upper
56	100		
69	181.8	27.8	41.8#
84	164.7	76.9	115.3#



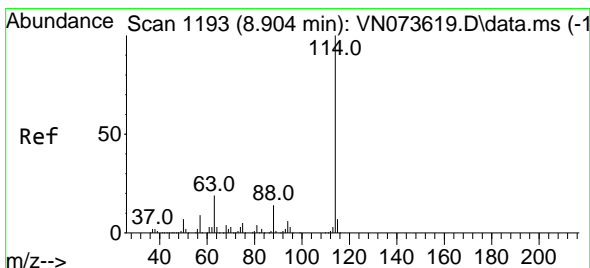
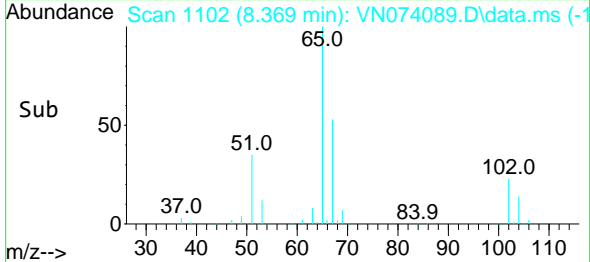
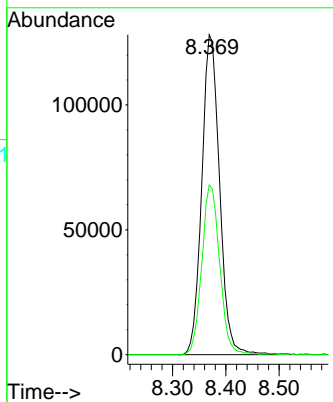
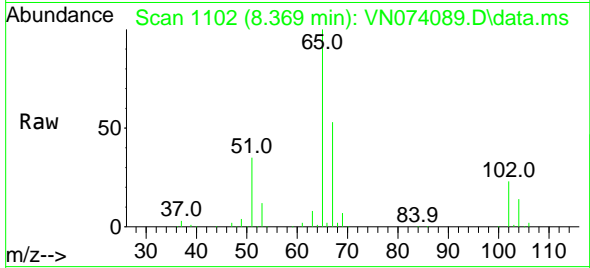




#33  
 1,2-Dichloroethane-d4  
 Concen: 51.573 ug/l  
 RT: 8.369 min Scan# 1102  
 Delta R.T. -0.000 min  
 Lab File: VN074089.D  
 Acq: 24 Aug 2022 14:12

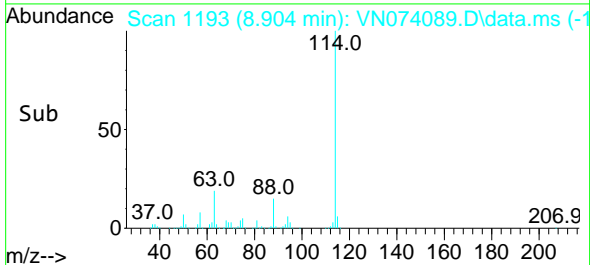
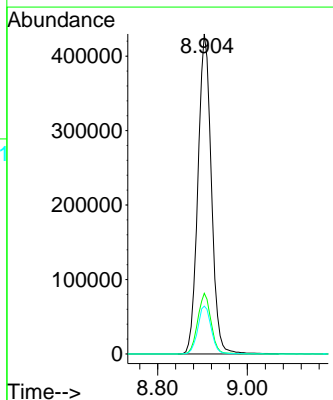
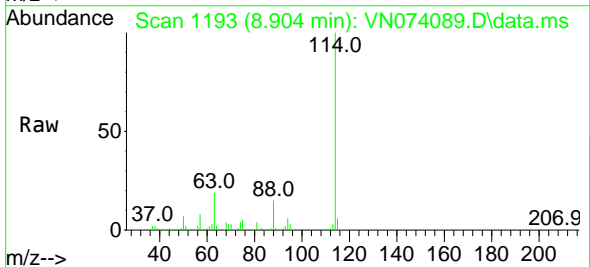
Instrument : MSVOA\_N  
 ClientSampleId : MW-105S

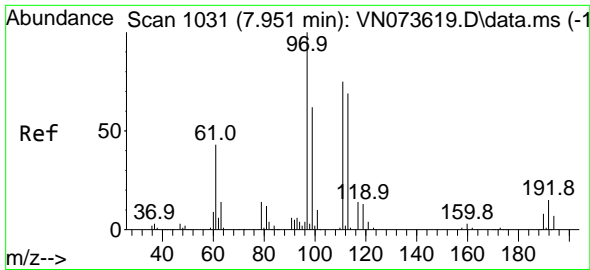
Tgt Ion: 65 Resp: 296733  
 Ion Ratio Lower Upper  
 65 100  
 67 53.3 0.0 104.8



#34  
 1,4-Difluorobenzene  
 Concen: 50.000 ug/l  
 RT: 8.904 min Scan# 1193  
 Delta R.T. -0.000 min  
 Lab File: VN074089.D  
 Acq: 24 Aug 2022 14:12

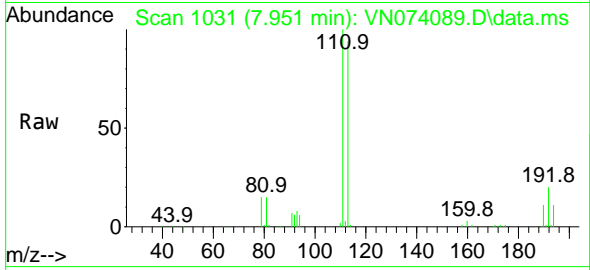
Tgt Ion: 114 Resp: 891780  
 Ion Ratio Lower Upper  
 114 100  
 63 18.9 0.0 40.0  
 88 15.0 0.0 32.6



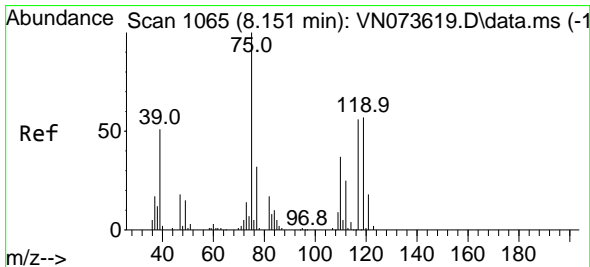
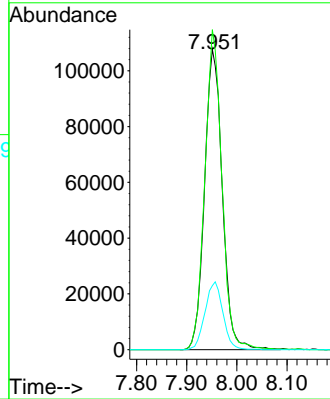
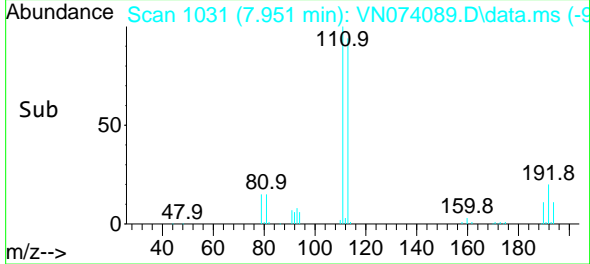


#35  
 Dibromofluoromethane  
 Concen: 50.335 ug/l  
 RT: 7.951 min Scan# 1031  
 Delta R.T. 0.000 min  
 Lab File: VN074089.D  
 Acq: 24 Aug 2022 14:12

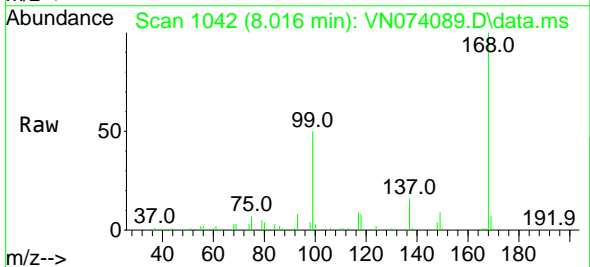
Instrument : MSVOA\_N  
 ClientSampleId : MW-105S



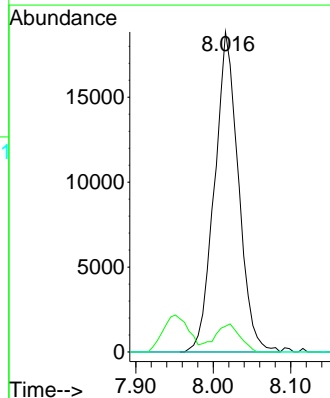
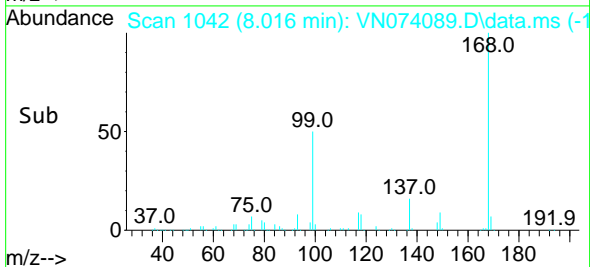
Tgt Ion:113 Resp: 265461  
 Ion Ratio Lower Upper  
 113 100  
 111 102.3 81.4 122.0  
 192 22.7 17.0 25.6

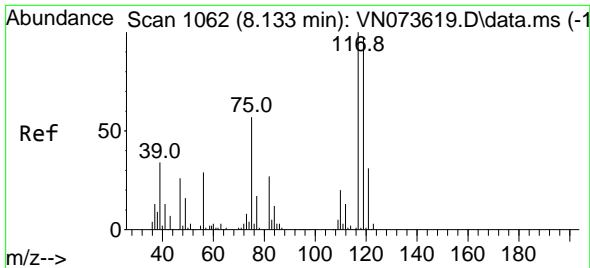


#36  
 1,1-Dichloropropene  
 Concen: 5.517 ug/l  
 RT: 8.016 min Scan# 1042  
 Delta R.T. -0.135 min  
 Lab File: VN074089.D  
 Acq: 24 Aug 2022 14:12



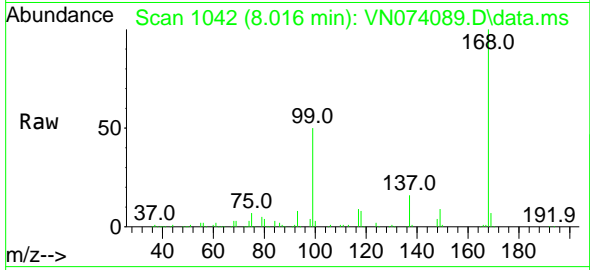
Tgt Ion: 75 Resp: 40412  
 Ion Ratio Lower Upper  
 75 100  
 110 9.0 18.3 54.8#  
 77 0.0 25.1 37.7#



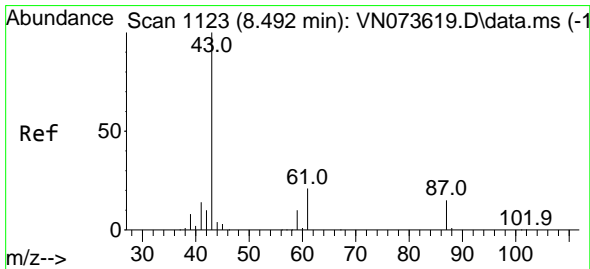
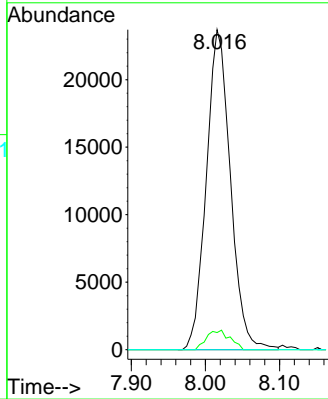
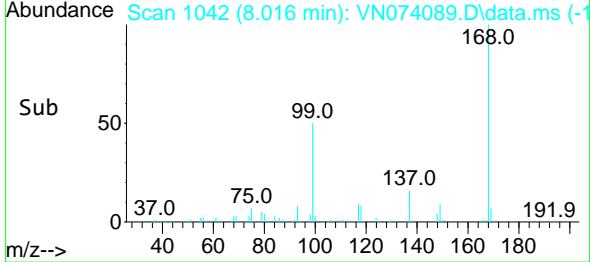


#38  
 Carbon Tetrachloride  
 Concen: 6.402 ug/l  
 RT: 8.016 min Scan# 1062  
 Delta R.T. -0.117 min  
 Lab File: VN074089.D  
 Acq: 24 Aug 2022 14:12

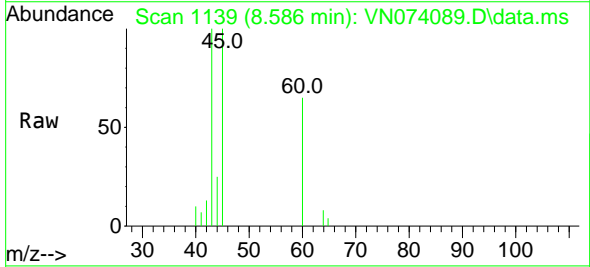
Instrument : MSVOA\_N  
 ClientSampleId : MW-105S



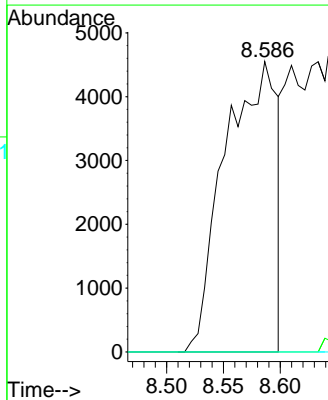
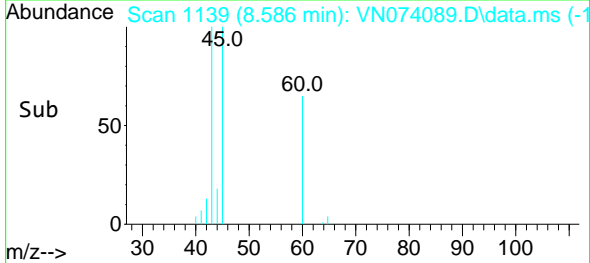
Tgt Ion:117 Resp: 53606  
 Ion Ratio Lower Upper  
 117 100  
 119 5.4 75.8 113.8#  
 121 0.0 24.6 37.0#

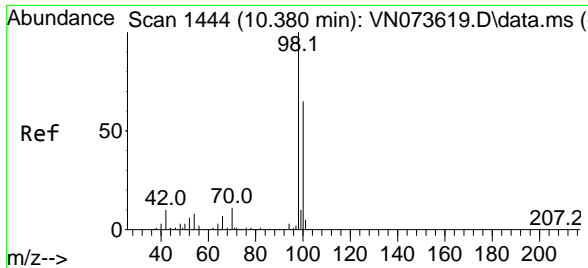


#43  
 Isopropyl Acetate  
 Concen: 1.150 ug/l  
 RT: 8.586 min Scan# 1139  
 Delta R.T. 0.094 min  
 Lab File: VN074089.D  
 Acq: 24 Aug 2022 14:12



Tgt Ion: 43 Resp: 14536  
 Ion Ratio Lower Upper  
 43 100  
 61 0.0 21.9 32.9#  
 87 0.0 12.0 18.0#

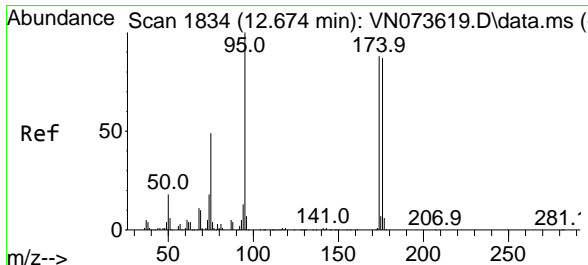
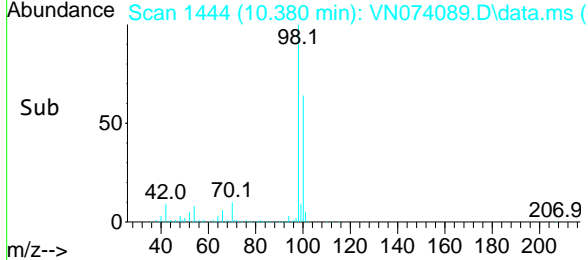
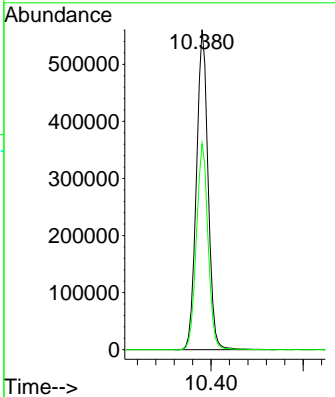
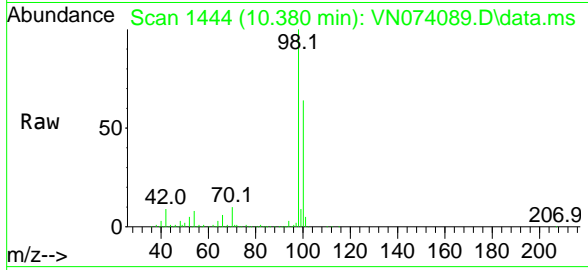




#50  
 Toluene-d8  
 Concen: 48.342 ug/l  
 RT: 10.380 min Scan# 1444  
 Delta R.T. 0.000 min  
 Lab File: VN074089.D  
 Acq: 24 Aug 2022 14:12

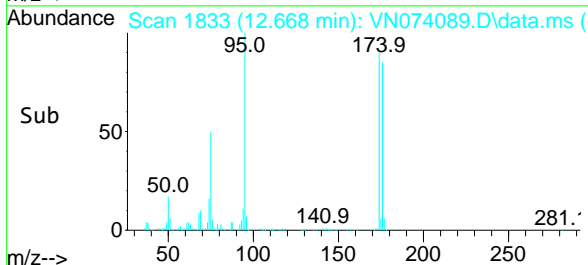
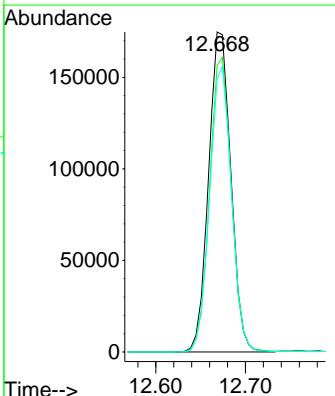
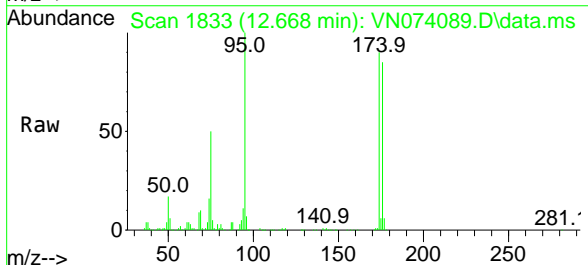
Instrument : MSVOA\_N  
 ClientSampleId : MW-105S

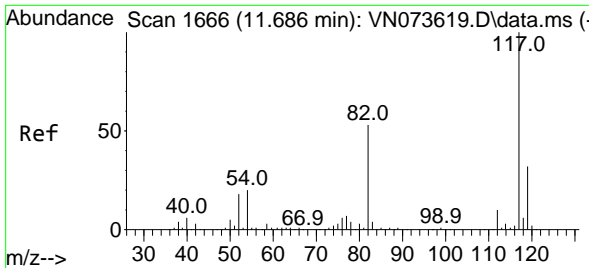
Tgt Ion: 98 Resp: 987393  
 Ion Ratio Lower Upper  
 98 100  
 100 64.3 52.6 78.8



#62  
 4-Bromofluorobenzene  
 Concen: 44.475 ug/l  
 RT: 12.668 min Scan# 1833  
 Delta R.T. -0.006 min  
 Lab File: VN074089.D  
 Acq: 24 Aug 2022 14:12

Tgt Ion: 95 Resp: 301486  
 Ion Ratio Lower Upper  
 95 100  
 174 90.3 0.0 167.6  
 176 87.2 0.0 163.4

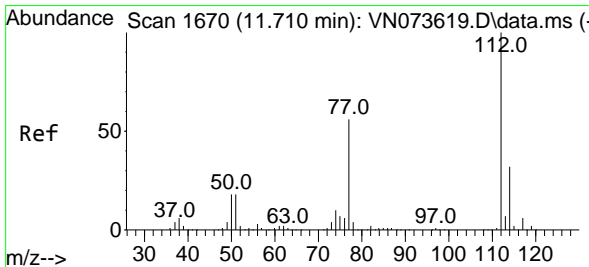
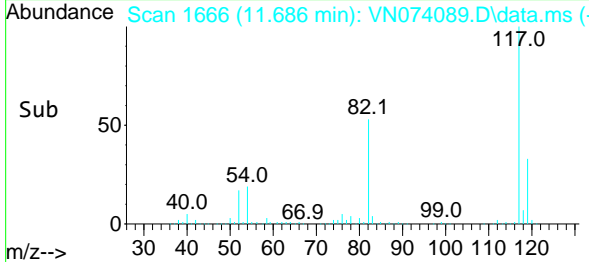
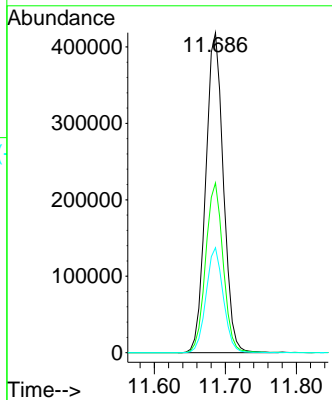
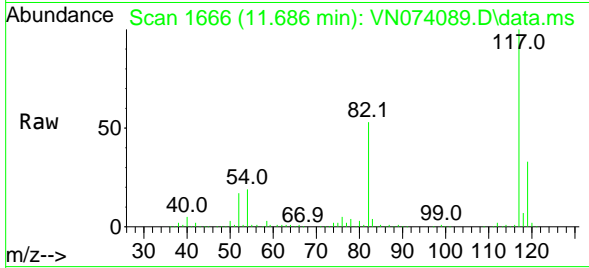




#63  
 Chlorobenzene-d5  
 Concen: 50.000 ug/l  
 RT: 11.686 min Scan# 1666  
 Delta R.T. 0.000 min  
 Lab File: VN074089.D  
 Acq: 24 Aug 2022 14:12

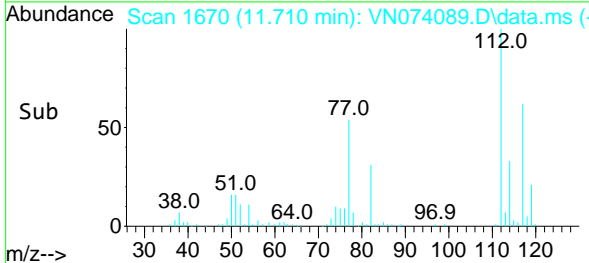
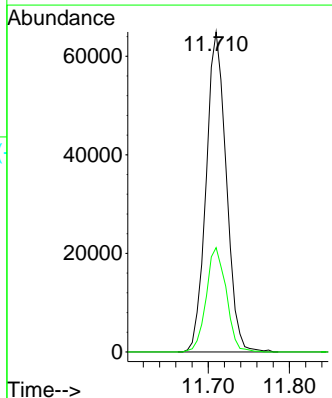
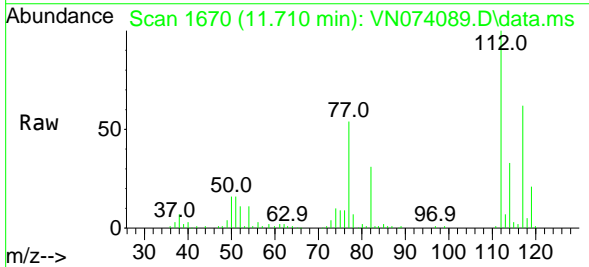
Instrument : MSVOA\_N  
 ClientSampleId : MW-105S

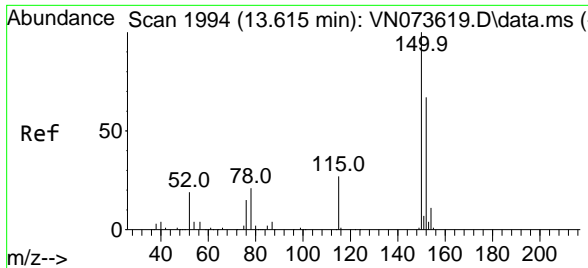
Tgt Ion:117 Resp: 722652  
 Ion Ratio Lower Upper  
 117 100  
 82 53.0 44.2 66.2  
 119 32.8 25.4 38.0



#65  
 Chlorobenzene  
 Concen: 7.284 ug/l  
 RT: 11.710 min Scan# 1670  
 Delta R.T. -0.000 min  
 Lab File: VN074089.D  
 Acq: 24 Aug 2022 14:12

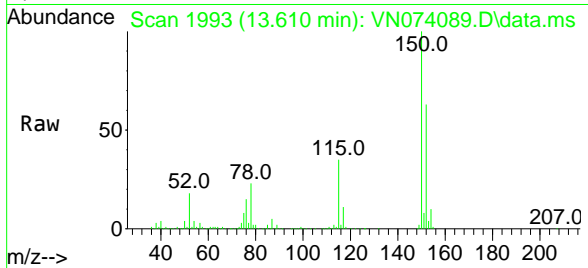
Tgt Ion:112 Resp: 111875  
 Ion Ratio Lower Upper  
 112 100  
 114 32.6 25.4 38.2



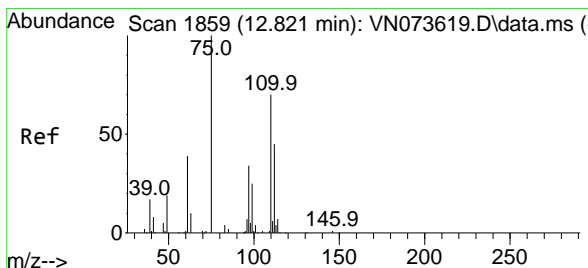
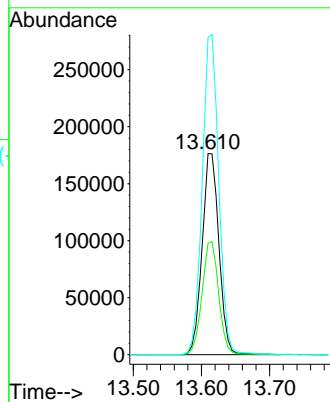
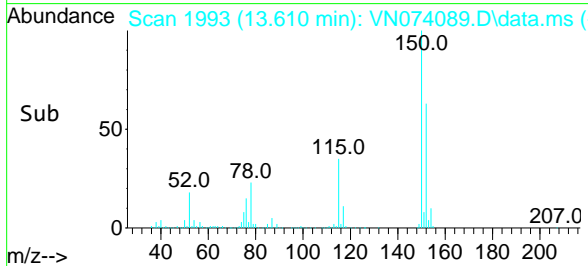


#72  
 1,4-Dichlorobenzene-d4  
 Concen: 50.000 ug/l  
 RT: 13.610 min Scan# 1993  
 Delta R.T. -0.005 min  
 Lab File: VN074089.D  
 Acq: 24 Aug 2022 14:12

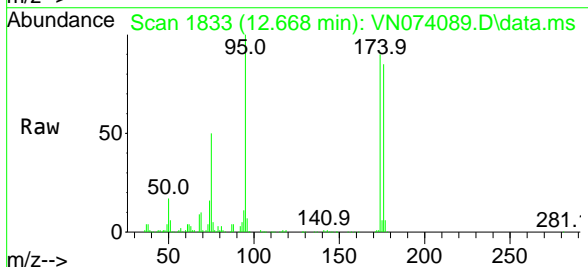
Instrument : MSVOA\_N  
 ClientSampleId : MW-105S



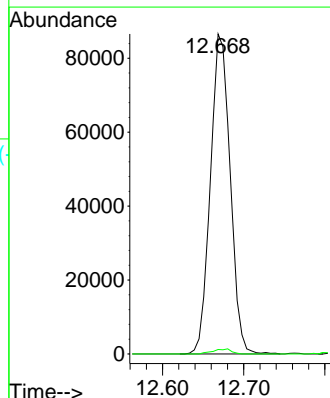
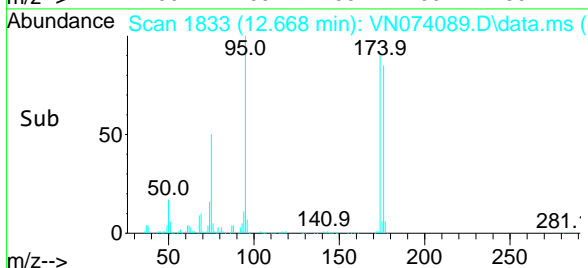
Tgt Ion:152 Resp: 302143  
 Ion Ratio Lower Upper  
 152 100  
 115 55.8 28.9 86.7  
 150 156.7 0.0 356.2

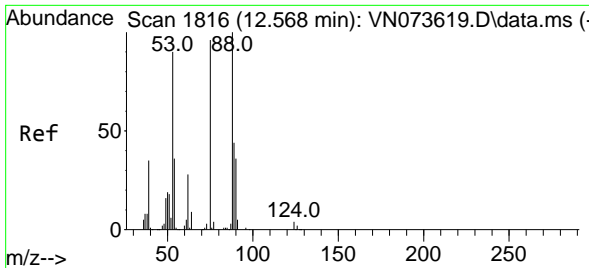


#76  
 1,2,3-Trichloropropane  
 Concen: 23.296 ug/l  
 RT: 12.668 min Scan# 1833  
 Delta R.T. -0.153 min  
 Lab File: VN074089.D  
 Acq: 24 Aug 2022 14:12



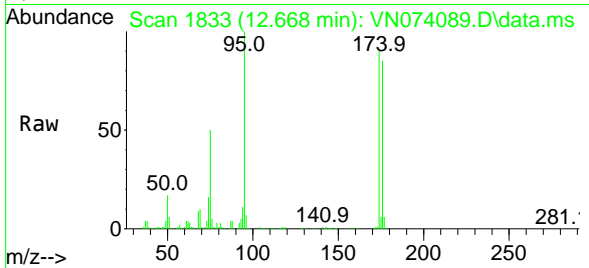
Tgt Ion: 75 Resp: 146298  
 Ion Ratio Lower Upper  
 75 100  
 77 1.5 98.5 295.5#



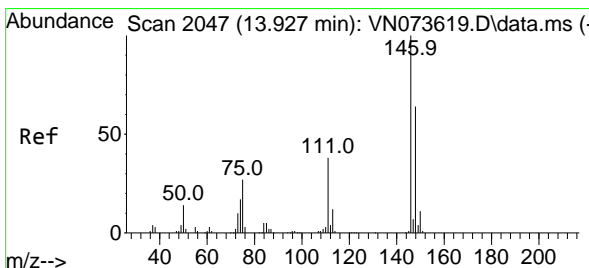
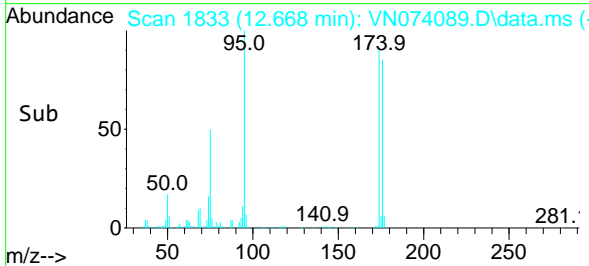
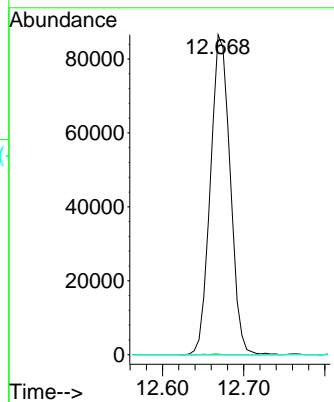


#81  
 trans-1,4-Dichloro-2-butene  
 Concen: 66.258 ug/l  
 RT: 12.668 min Scan# 1816  
 Delta R.T. 0.100 min  
 Lab File: VN074089.D  
 Acq: 24 Aug 2022 14:12

Instrument :  
 MSVOA\_N  
 ClientSampleId :  
 MW-105S



Tgt Ion: 75 Resp: 146298  
 Ion Ratio Lower Upper  
 75 100  
 53 0.2 78.0 117.0#  
 89 0.0 37.2 55.8#



#91  
 1,2-Dichlorobenzene  
 Concen: 0.296 ug/l  
 RT: 13.921 min Scan# 2046  
 Delta R.T. -0.006 min  
 Lab File: VN074089.D  
 Acq: 24 Aug 2022 14:12

Tgt Ion:146 Resp: 3153  
 Ion Ratio Lower Upper  
 146 100  
 111 41.3 20.9 62.8  
 148 57.2 32.1 96.3

