

Data Path : Z:\voasrv\HPCHEM1\MSVOA_N\Data\VN082522\
 Data File : VN074113.D
 Acq On : 25 Aug 2022 14:45
 Operator : JC\MD
 Sample : N4244-07RE
 Misc : 5.0mL/MSVOA_N/WATER
 ALS Vial : 9 Sample Multiplier: 1

Instrument :
 MSVOA_N
 ClientSampleId :
 MW-103I

Quant Time: Aug 26 02:00:46 2022
 Quant Method : Z:\voasrv\HPCHEM1\MSVOA_N\methods\82N081522W.M
 Quant Title : SW846 8260
 QLast Update : Tue Aug 16 00:45:21 2022
 Response via : Initial Calibration

Compound	R.T.	QIon	Response	Conc	Units	Dev(Min)

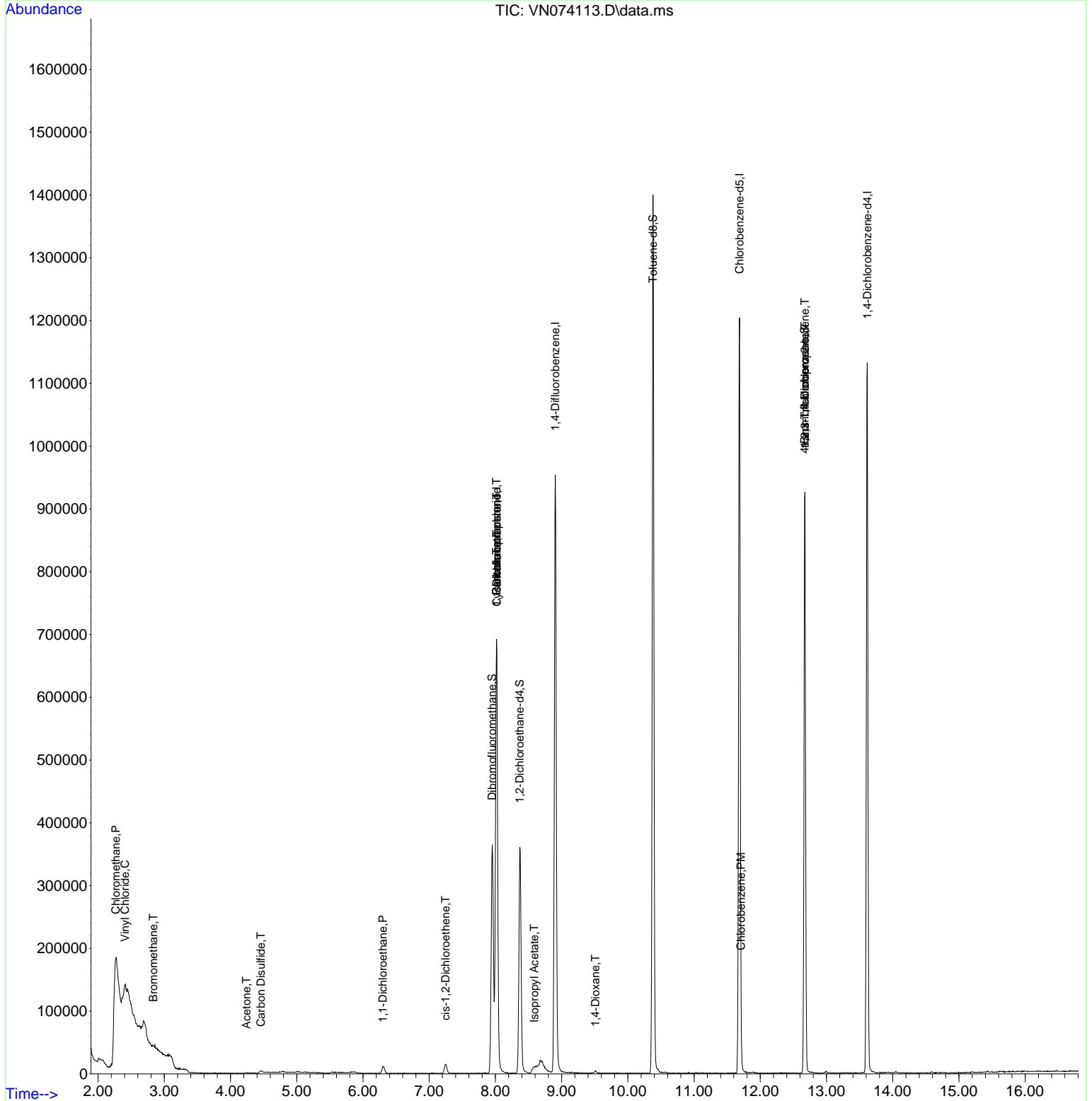
Internal Standards						
1) Pentafluorobenzene	8.016	168	584975	50.000	ug/l	0.00
34) 1,4-Difluorobenzene	8.904	114	886069	50.000	ug/l	0.00
63) Chlorobenzene-d5	11.686	117	745563	50.000	ug/l	0.00
72) 1,4-Dichlorobenzene-d4	13.616	152	330123	50.000	ug/l	0.00
System Monitoring Compounds						
33) 1,2-Dichloroethane-d4	8.369	65	302676	53.123	ug/l	0.00
Spiked Amount	50.000	Range 74 - 125	Recovery	=	106.240%	
35) Dibromofluoromethane	7.951	113	270846	51.687	ug/l	0.00
Spiked Amount	50.000	Range 75 - 124	Recovery	=	103.380%	
50) Toluene-d8	10.381	98	984692	48.520	ug/l	0.00
Spiked Amount	50.000	Range 86 - 113	Recovery	=	97.040%	
62) 4-Bromofluorobenzene	12.669	95	308523	45.806	ug/l	0.00
Spiked Amount	50.000	Range 83 - 123	Recovery	=	91.620%	
Target Compounds						
						Qvalue
3) Chloromethane	2.269	50	11207	2.173	ug/l #	43
4) Vinyl Chloride	2.405	62	12611	1.905	ug/l #	6
5) Bromomethane	2.834	94	1241	0.300	ug/l	95
16) Acetone	4.240	43	2208	0.821	ug/l #	83
17) Carbon Disulfide	4.457	76	9672	0.881	ug/l	99
18) Methyl Acetate	4.804	43	2585	Below Cal		90
24) 1,1-Dichloroethane	6.298	63	15679	1.737	ug/l	96
27) cis-1,2-Dichloroethene	7.245	96	8468	1.349	ug/l	86
31) Cyclohexane	8.022	56	10000	1.259	ug/l #	1
36) 1,1-Dichloropropene	8.022	75	38866	5.340	ug/l #	50
38) Carbon Tetrachloride	8.016	117	50968	6.126	ug/l #	19
43) Isopropyl Acetate	8.587	43	8894	0.708	ug/l #	53
49) 1,4-Dioxane	9.510	88	2687	16.811	ug/l #	91
65) Chlorobenzene	11.710	112	5975	0.377	ug/l	90
76) 1,2,3-Trichloropropane	12.675	75	149946	21.853	ug/l #	1
81) trans-1,4-Dichloro-2-b...	12.675	75	149946	62.154	ug/l #	10

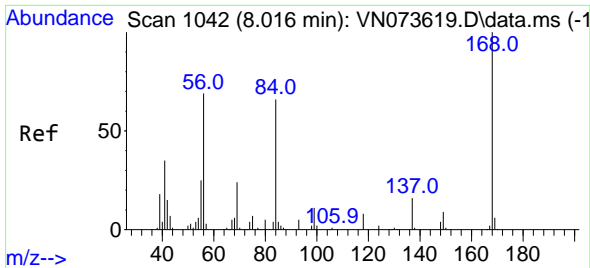
(#) = qualifier out of range (m) = manual integration (+) = signals summed

Data Path : Z:\voasrv\HPCHEM1\MSVOA_N\Data\VN082522\
 Data File : VN074113.D
 Acq On : 25 Aug 2022 14:45
 Operator : JC\MD
 Sample : N4244-07RE
 Misc : 5.0mL/MSVOA_N/WATER
 ALS Vial : 9 Sample Multiplier: 1

Instrument :
 MSVOA_N
 ClientSampleId :
 MW-103I

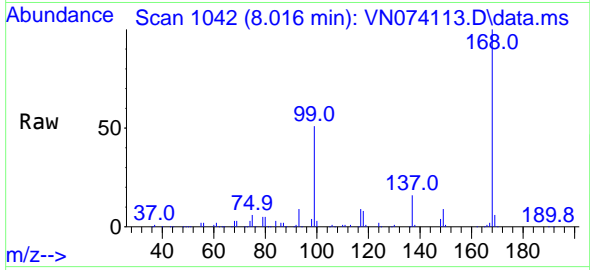
Quant Time: Aug 26 02:00:46 2022
 Quant Method : Z:\voasrv\HPCHEM1\MSVOA_N\methods\82N081522W.M
 Quant Title : SW846 8260
 QLast Update : Tue Aug 16 00:45:21 2022
 Response via : Initial Calibration



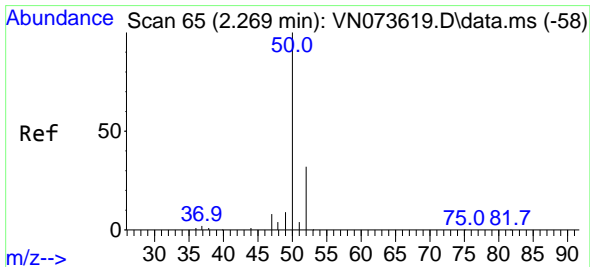
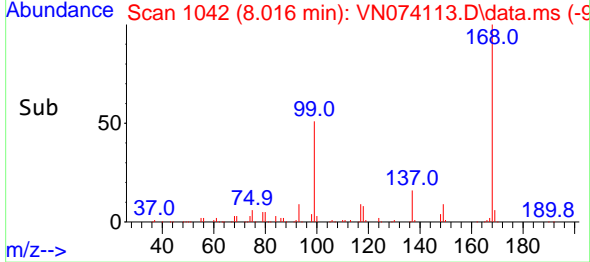
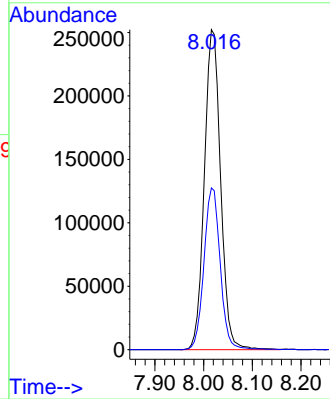


#1
 Pentafluorobenzene
 Concen: 50.000 ug/l
 RT: 8.016 min Scan# 10
 Delta R.T. -0.000 min
 Lab File: VN074113.D
 Acq: 25 Aug 2022 14:45

Instrument : MSVOA_N
 ClientSampleId : MW-103I

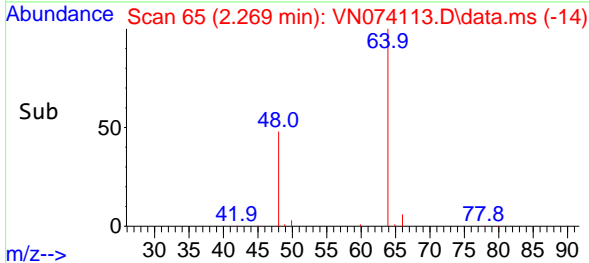
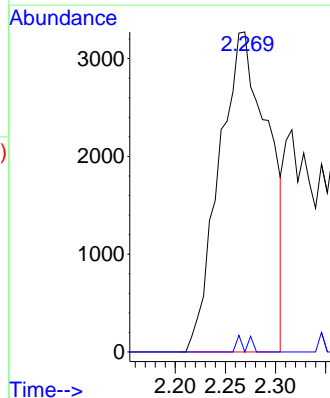
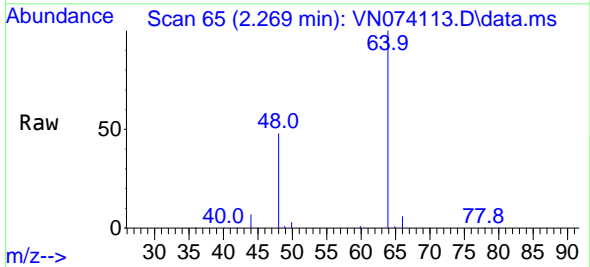


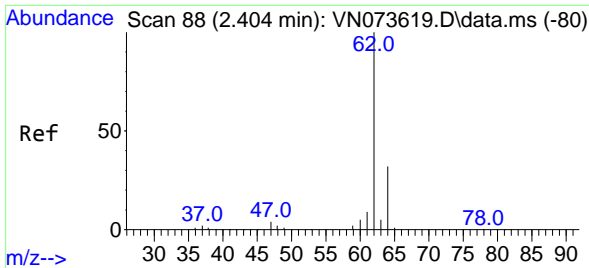
Tgt Ion:168 Resp: 584975
 Ion Ratio Lower Upper
 168 100
 99 50.5 42.3 63.5



#3
 Chloromethane
 Concen: 2.173 ug/l
 RT: 2.269 min Scan# 65
 Delta R.T. 0.000 min
 Lab File: VN074113.D
 Acq: 25 Aug 2022 14:45

Tgt Ion: 50 Resp: 11207
 Ion Ratio Lower Upper
 50 100
 52 0.0 25.7 38.5#

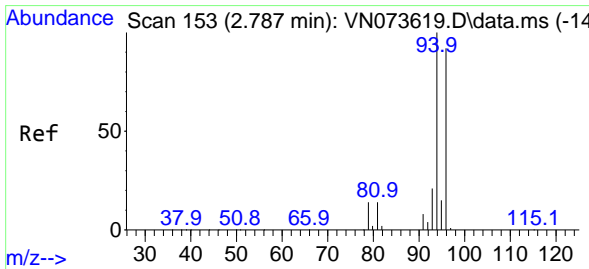
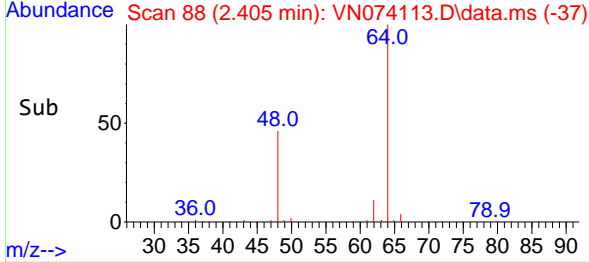
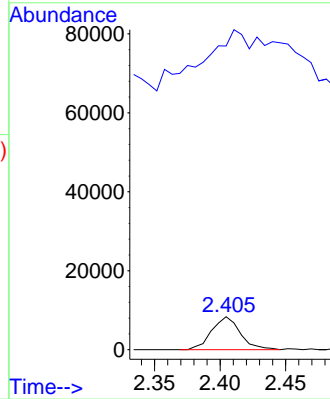
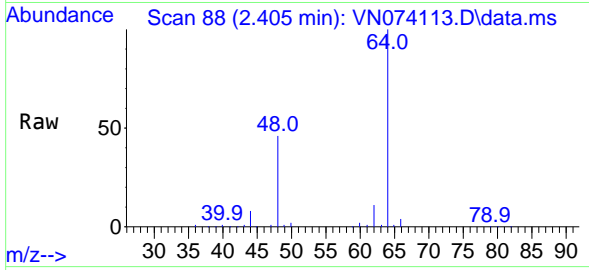




#4
 Vinyl Chloride
 Concen: 1.905 ug/l
 RT: 2.405 min Scan# 81
 Delta R.T. 0.001 min
 Lab File: VN074113.D
 Acq: 25 Aug 2022 14:45

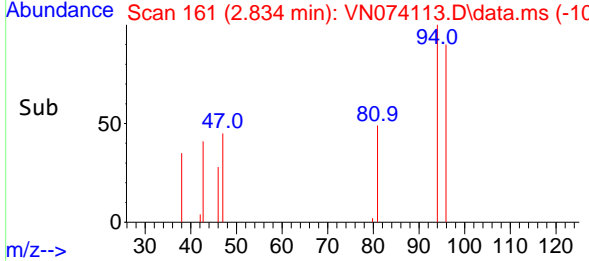
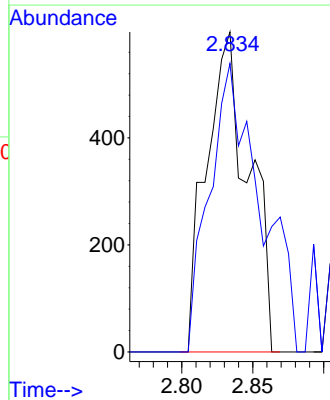
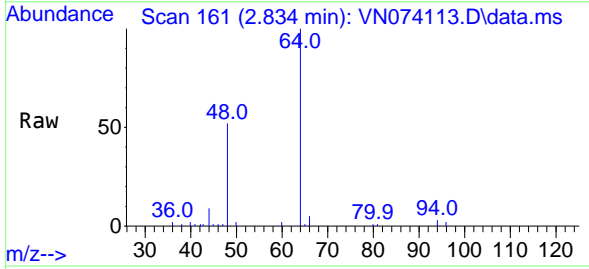
Instrument : MSVOA_N
 ClientSampleId : MW-103I

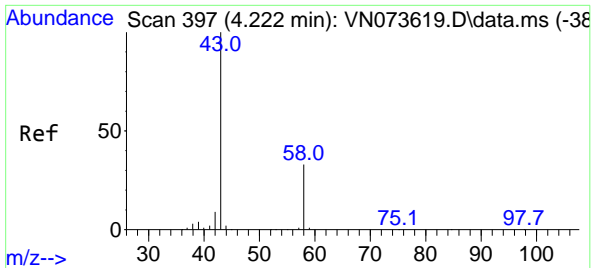
Tgt Ion: 62 Resp: 12611
 Ion Ratio Lower Upper
 62 100
 64 83.2 25.0 37.4#



#5
 Bromomethane
 Concen: 0.300 ug/l
 RT: 2.834 min Scan# 161
 Delta R.T. 0.047 min
 Lab File: VN074113.D
 Acq: 25 Aug 2022 14:45

Tgt Ion: 94 Resp: 1241
 Ion Ratio Lower Upper
 94 100
 96 90.1 76.0 114.0

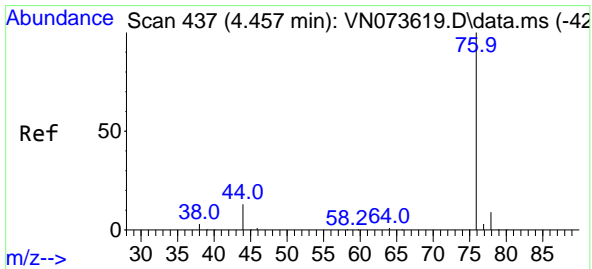
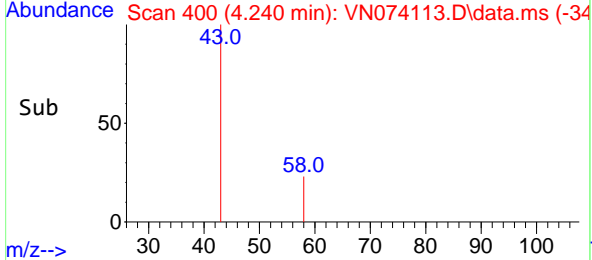
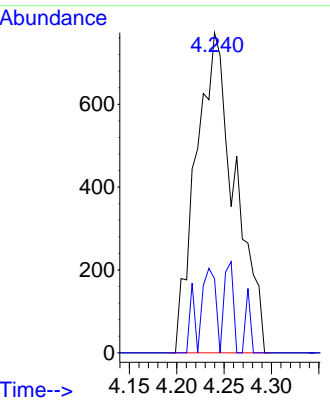
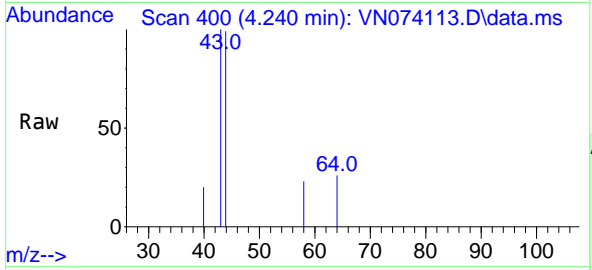




#16
 Acetone
 Concen: 0.821 ug/l
 RT: 4.240 min Scan# 400
 Delta R.T. 0.018 min
 Lab File: VN074113.D
 Acq: 25 Aug 2022 14:45

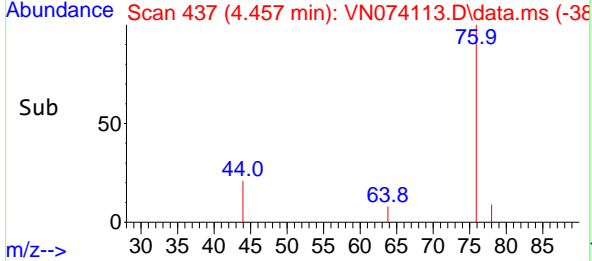
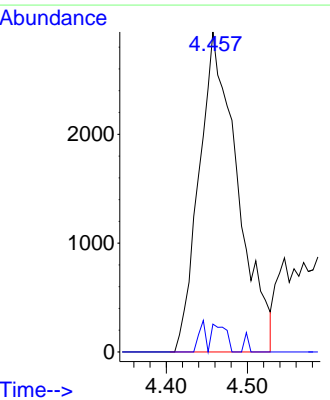
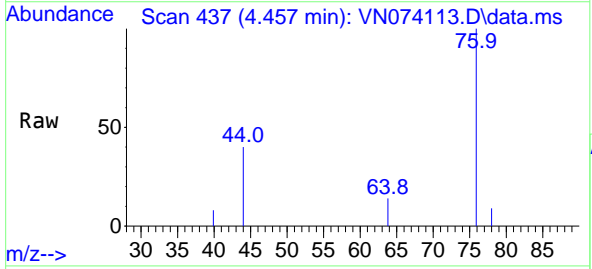
Instrument : MSVOA_N
 ClientSampleId : MW-103I

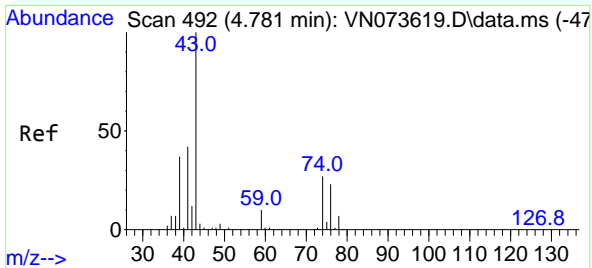
Tgt Ion: 43 Resp: 2208
 Ion Ratio Lower Upper
 43 100
 58 23.2 26.0 39.0#



#17
 Carbon Disulfide
 Concen: 0.881 ug/l
 RT: 4.457 min Scan# 437
 Delta R.T. 0.000 min
 Lab File: VN074113.D
 Acq: 25 Aug 2022 14:45

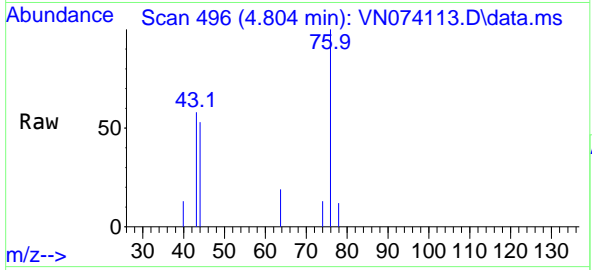
Tgt Ion: 76 Resp: 9672
 Ion Ratio Lower Upper
 76 100
 78 8.7 7.2 10.8



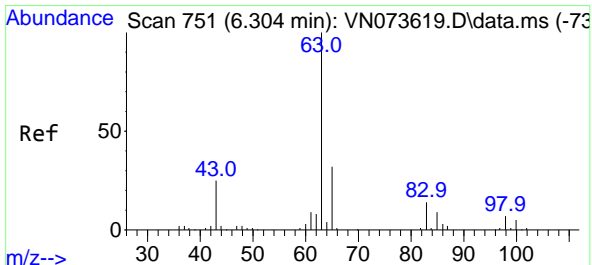
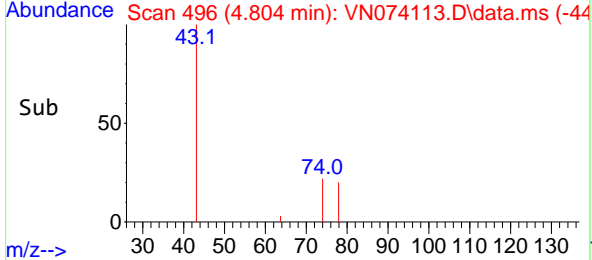
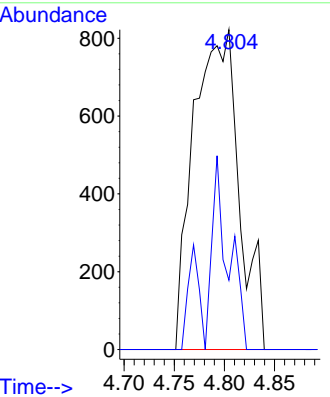


#18
 Methyl Acetate
 Concen: Below Cal
 RT: 4.804 min Scan# 492
 Delta R.T. 0.023 min
 Lab File: VN074113.D
 Acq: 25 Aug 2022 14:45

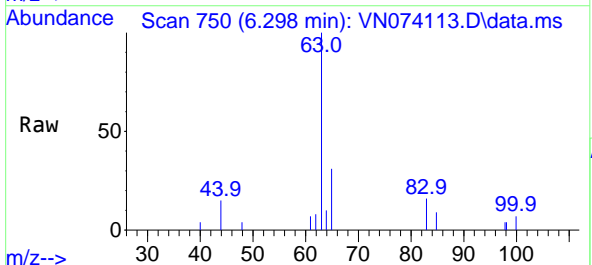
Instrument : MSVOA_N
 ClientSampleId : MW-103I



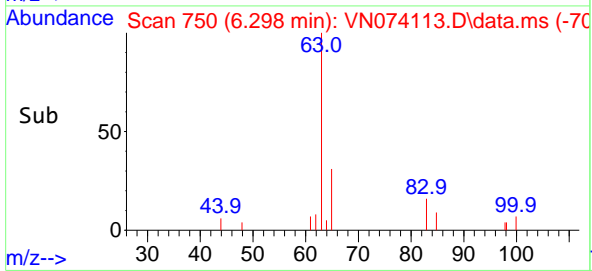
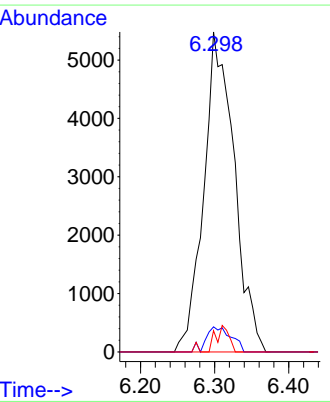
Tgt Ion: 43 Resp: 2585
 Ion Ratio Lower Upper
 43 100
 74 21.9 21.6 32.4

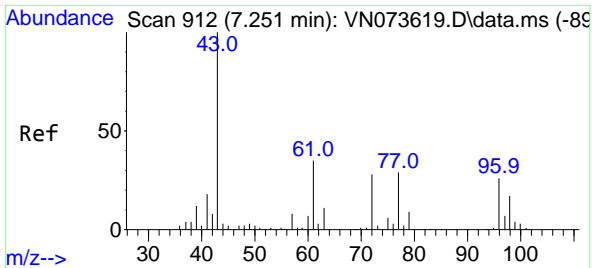


#24
 1,1-Dichloroethane
 Concen: 1.737 ug/l
 RT: 6.298 min Scan# 750
 Delta R.T. -0.006 min
 Lab File: VN074113.D
 Acq: 25 Aug 2022 14:45



Tgt Ion: 63 Resp: 15679
 Ion Ratio Lower Upper
 63 100
 98 7.9 3.5 10.4
 100 6.6 2.3 6.8



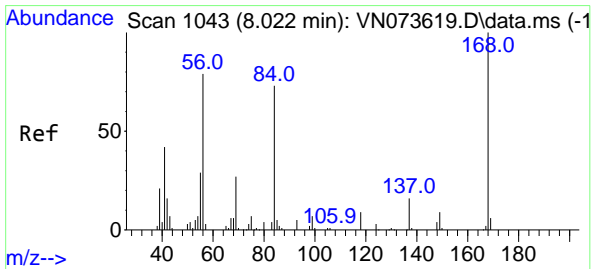
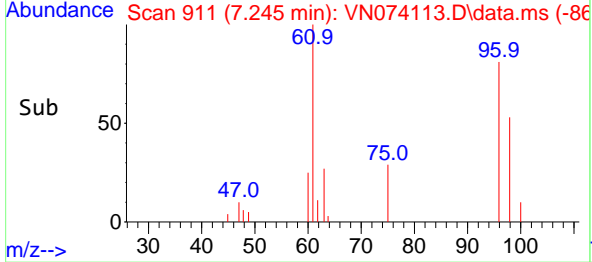
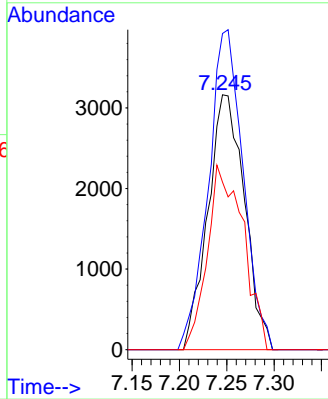
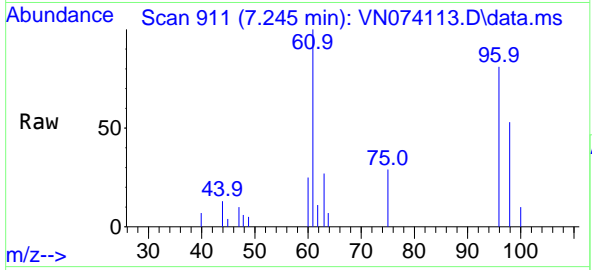


#27
 cis-1,2-Dichloroethene
 Concen: 1.349 ug/l
 RT: 7.245 min Scan# 911
 Delta R.T. -0.006 min
 Lab File: VN074113.D
 Acq: 25 Aug 2022 14:45

Instrument : MSVOA_N
 ClientSampleId : MW-103I

Tgt Ion: 96 Resp: 8468

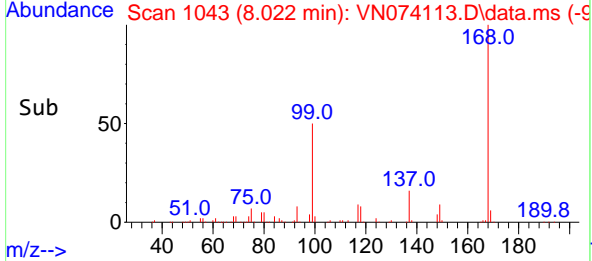
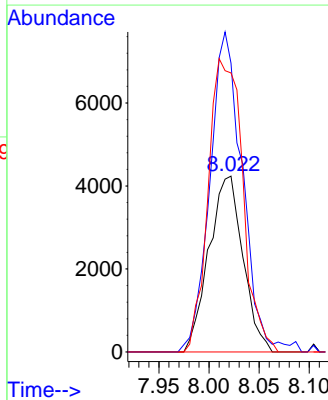
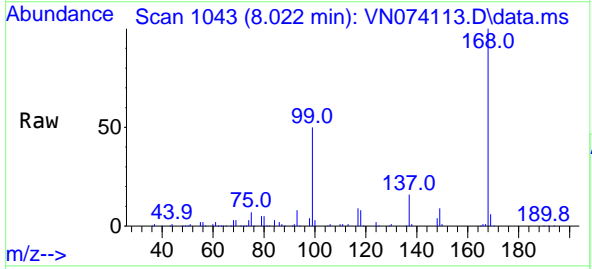
Ion	Ratio	Lower	Upper
96	100		
61	119.7	0.0	280.6
98	71.1	0.0	128.4

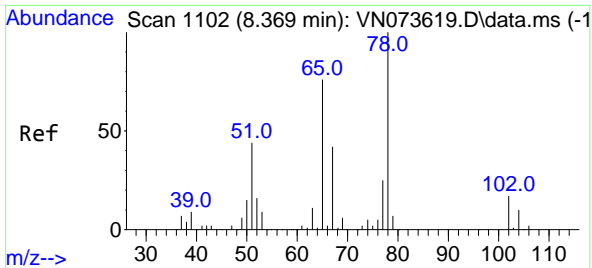


#31
 Cyclohexane
 Concen: 1.259 ug/l
 RT: 8.022 min Scan# 1043
 Delta R.T. -0.000 min
 Lab File: VN074113.D
 Acq: 25 Aug 2022 14:45

Tgt Ion: 56 Resp: 10000

Ion	Ratio	Lower	Upper
56	100		
69	164.3	27.8	41.8#
84	158.7	76.9	115.3#

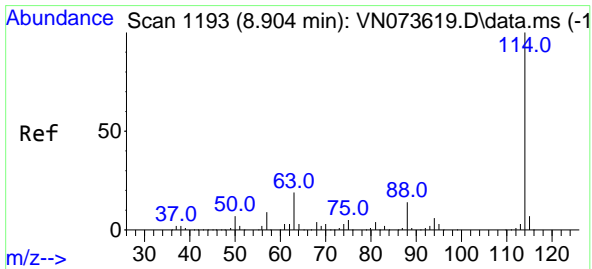
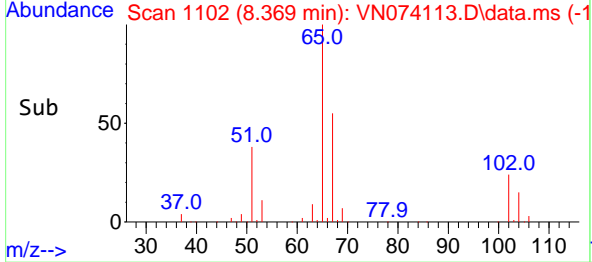
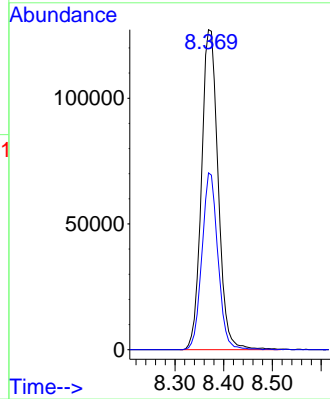
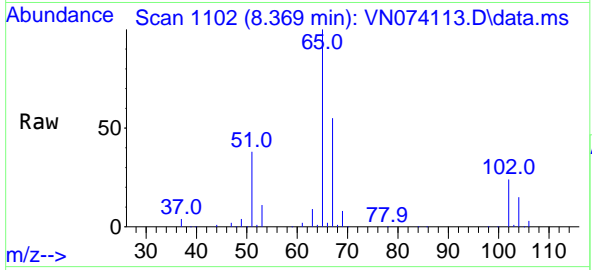




#33
 1,2-Dichloroethane-d4
 Concen: 53.123 ug/l
 RT: 8.369 min Scan# 1102
 Delta R.T. -0.000 min
 Lab File: VN074113.D
 Acq: 25 Aug 2022 14:45

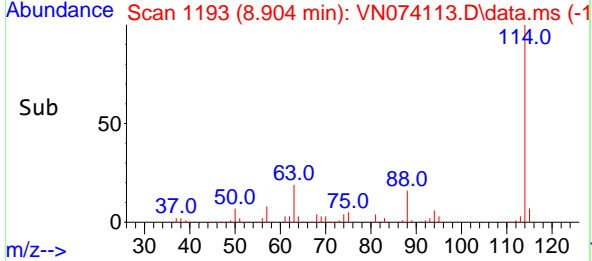
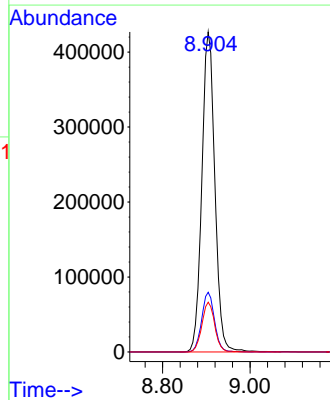
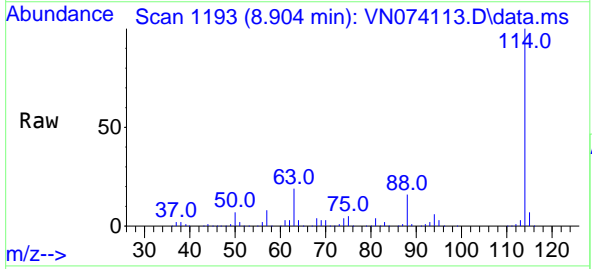
Instrument : MSVOA_N
 ClientSampleId : MW-103I

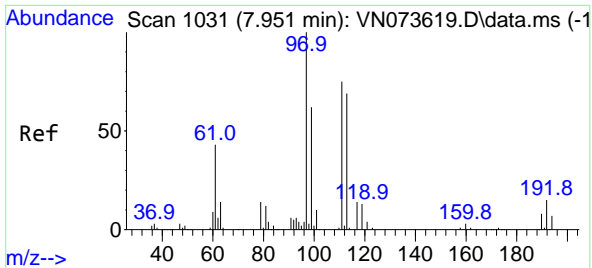
Tgt Ion: 65 Resp: 302676
 Ion Ratio Lower Upper
 65 100
 67 53.0 0.0 104.8



#34
 1,4-Difluorobenzene
 Concen: 50.000 ug/l
 RT: 8.904 min Scan# 1193
 Delta R.T. 0.000 min
 Lab File: VN074113.D
 Acq: 25 Aug 2022 14:45

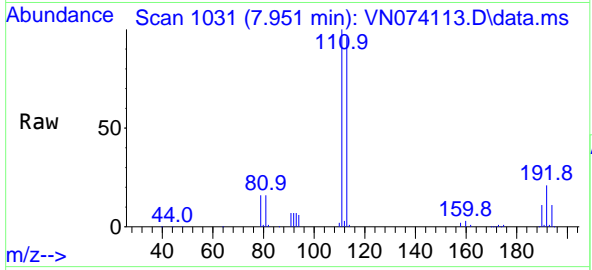
Tgt Ion:114 Resp: 886069
 Ion Ratio Lower Upper
 114 100
 63 18.6 0.0 40.0
 88 15.5 0.0 32.6



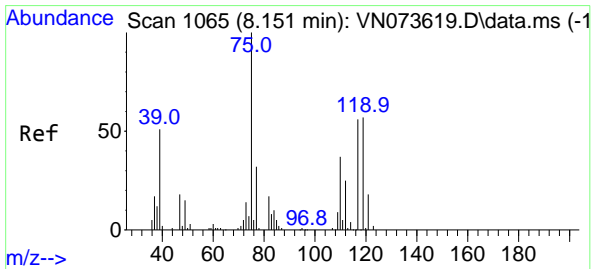
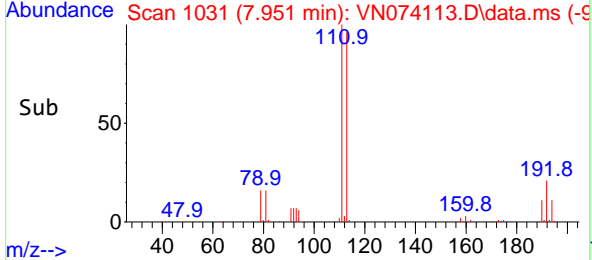
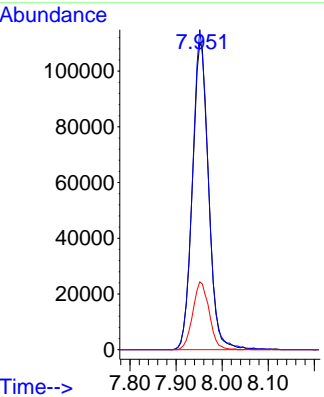


#35
 Dibromofluoromethane
 Concen: 51.687 ug/l
 RT: 7.951 min Scan# 1031
 Delta R.T. 0.000 min
 Lab File: VN074113.D
 Acq: 25 Aug 2022 14:45

Instrument : MSVOA_N
 ClientSampleId : MW-1031

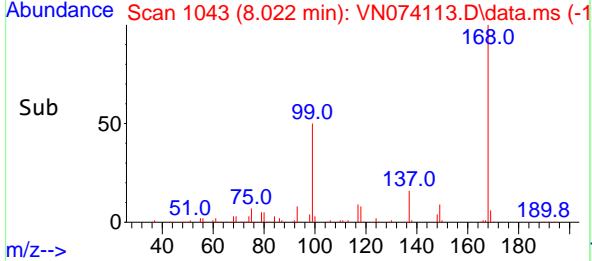
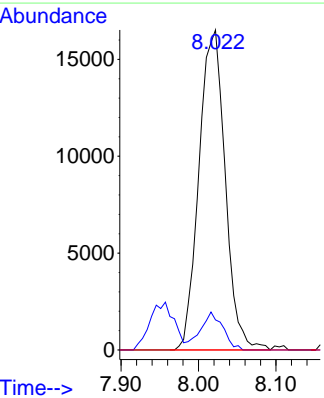
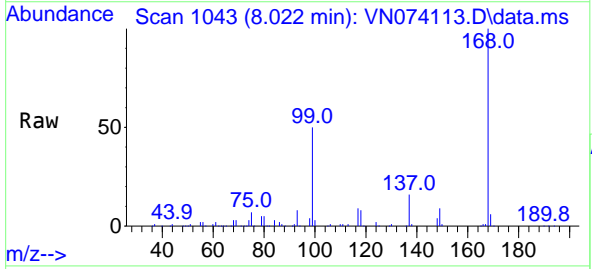


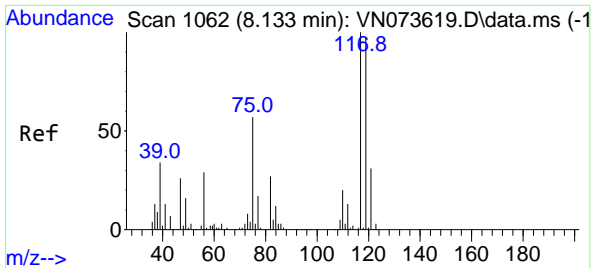
Tgt Ion:113 Resp: 270846
 Ion Ratio Lower Upper
 113 100
 111 101.8 81.4 122.0
 192 22.3 17.0 25.6



#36
 1,1-Dichloropropene
 Concen: 5.340 ug/l
 RT: 8.022 min Scan# 1043
 Delta R.T. -0.129 min
 Lab File: VN074113.D
 Acq: 25 Aug 2022 14:45

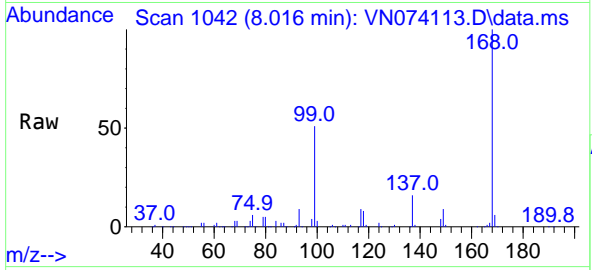
Tgt Ion: 75 Resp: 38866
 Ion Ratio Lower Upper
 75 100
 110 9.9 18.3 54.8#
 77 0.0 25.1 37.7#



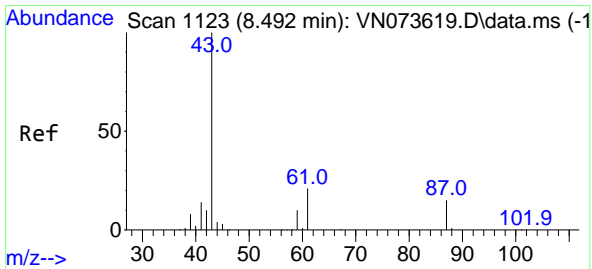
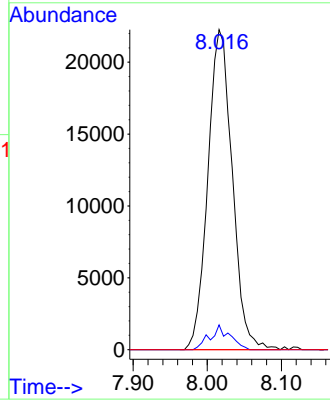
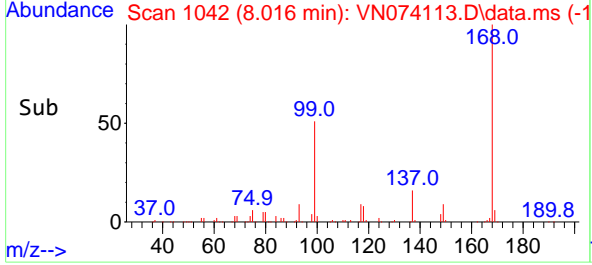


#38
 Carbon Tetrachloride
 Concen: 6.126 ug/l
 RT: 8.016 min Scan# 1139
 Delta R.T. -0.117 min
 Lab File: VN074113.D
 Acq: 25 Aug 2022 14:45

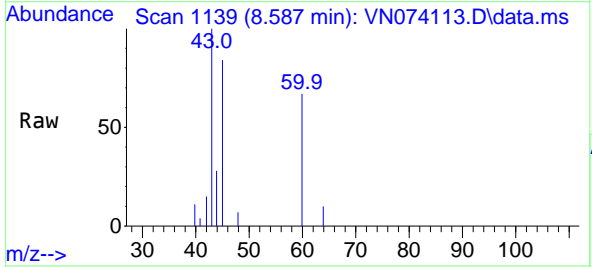
Instrument : MSVOA_N
 ClientSampleId : MW-103I



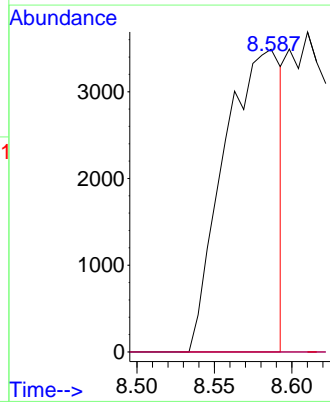
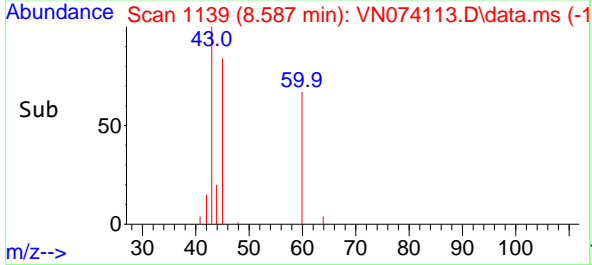
Tgt Ion:117 Resp: 50968
 Ion Ratio Lower Upper
 117 100
 119 7.8 75.8 113.8#
 121 0.0 24.6 37.0#

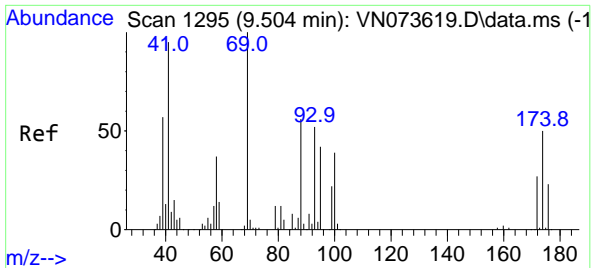


#43
 Isopropyl Acetate
 Concen: 0.708 ug/l
 RT: 8.587 min Scan# 1139
 Delta R.T. 0.095 min
 Lab File: VN074113.D
 Acq: 25 Aug 2022 14:45



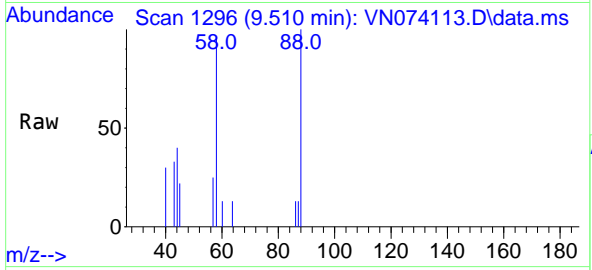
Tgt Ion: 43 Resp: 8894
 Ion Ratio Lower Upper
 43 100
 61 0.0 21.9 32.9#
 87 0.0 12.0 18.0#





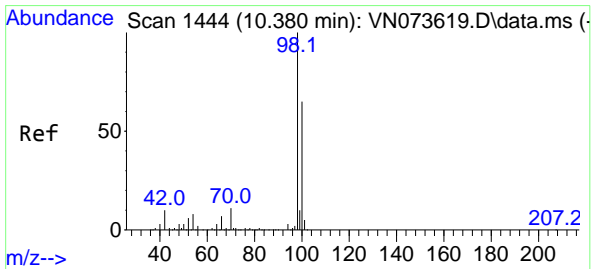
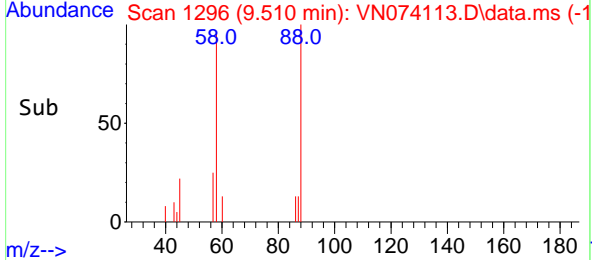
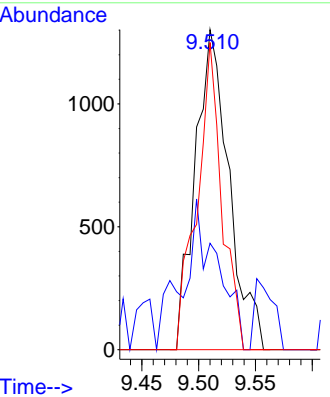
#49
 1,4-Dioxane
 Concen: 16.811 ug/l
 RT: 9.510 min Scan# 11
 Delta R.T. 0.006 min
 Lab File: VN074113.D
 Acq: 25 Aug 2022 14:45

Instrument : MSVOA_N
 ClientSampleId : MW-103I



Tgt Ion: 88 Resp: 2687

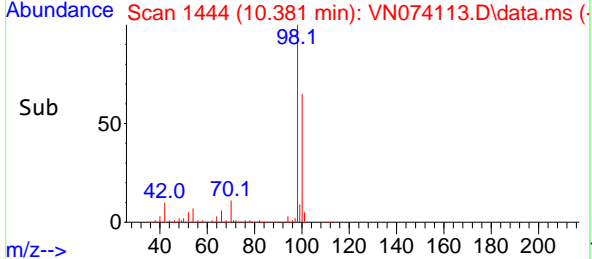
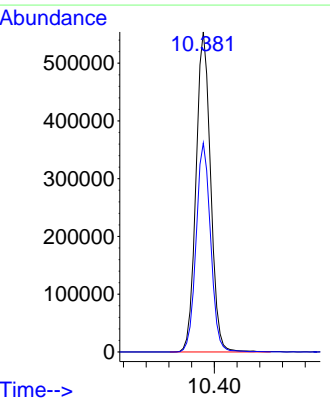
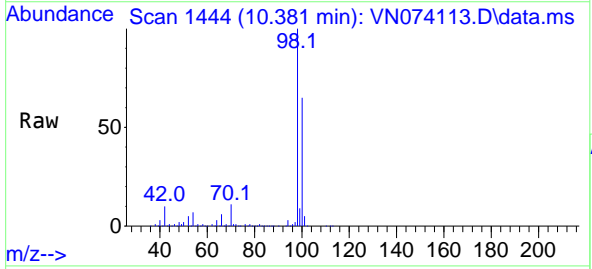
Ion	Ratio	Lower	Upper
88	100		
43	36.4	20.2	30.4#
58	70.8	54.2	81.4

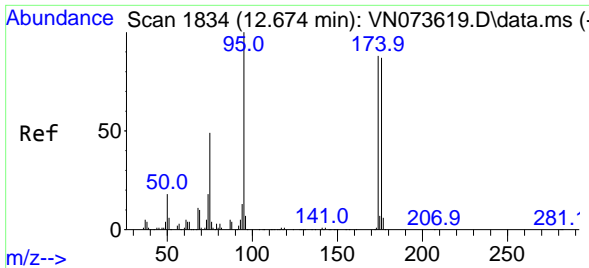


#50
 Toluene-d8
 Concen: 48.520 ug/l
 RT: 10.381 min Scan# 1444
 Delta R.T. 0.001 min
 Lab File: VN074113.D
 Acq: 25 Aug 2022 14:45

Tgt Ion: 98 Resp: 984692

Ion	Ratio	Lower	Upper
98	100		
100	64.8	52.6	78.8



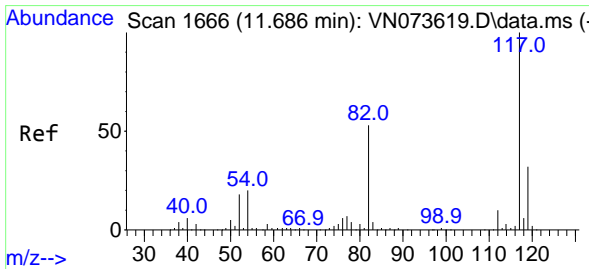
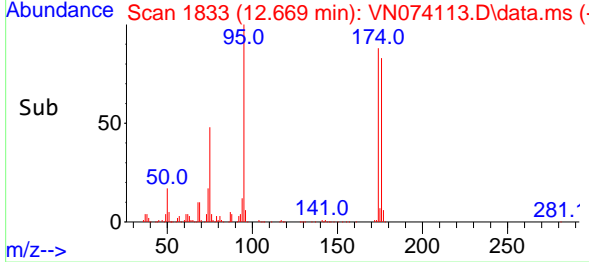
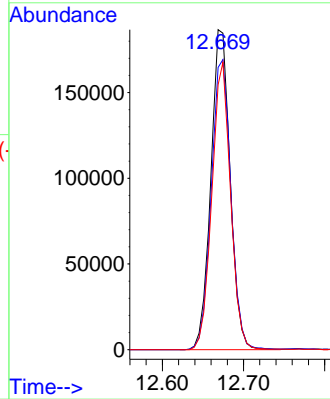
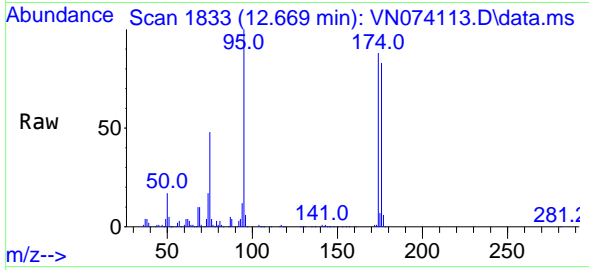


#62
 4-Bromofluorobenzene
 Concen: 45.806 ug/l
 RT: 12.669 min Scan# 1833
 Delta R.T. -0.005 min
 Lab File: VN074113.D
 Acq: 25 Aug 2022 14:45

Instrument : MSVOA_N
 ClientSampleId : MW-103I

Tgt Ion: 95 Resp: 308523

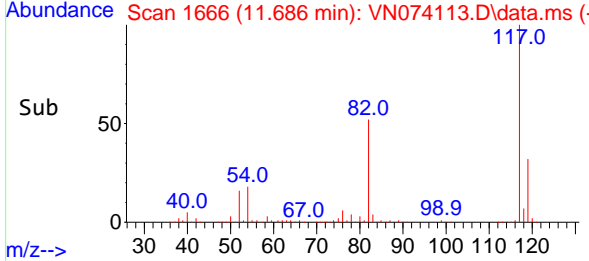
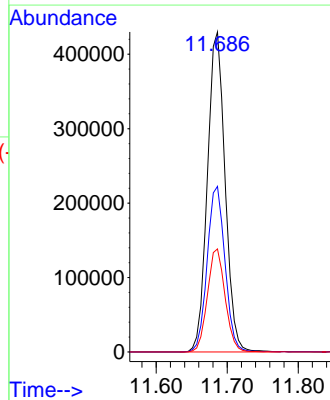
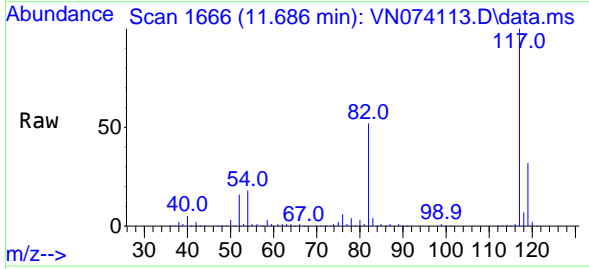
Ion	Ratio	Lower	Upper
95	100		
174	92.3	0.0	167.6
176	86.9	0.0	163.4

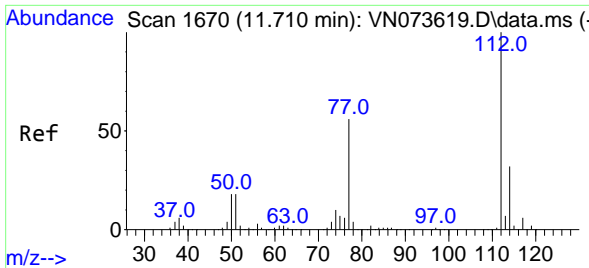


#63
 Chlorobenzene-d5
 Concen: 50.000 ug/l
 RT: 11.686 min Scan# 1666
 Delta R.T. 0.000 min
 Lab File: VN074113.D
 Acq: 25 Aug 2022 14:45

Tgt Ion: 117 Resp: 745563

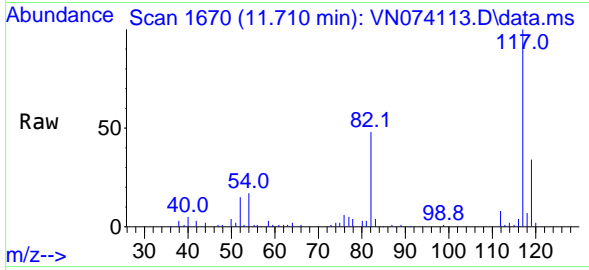
Ion	Ratio	Lower	Upper
117	100		
82	51.7	44.2	66.2
119	32.2	25.4	38.0



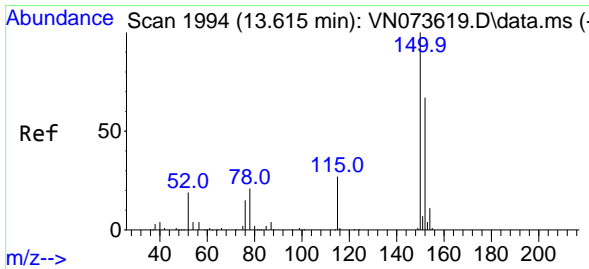
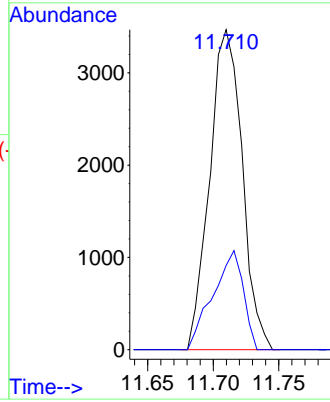
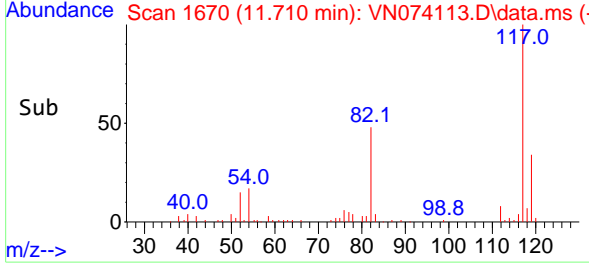


#65
 Chlorobenzene
 Concen: 0.377 ug/l
 RT: 11.710 min Scan# 1111
 Delta R.T. -0.000 min
 Lab File: VN074113.D
 Acq: 25 Aug 2022 14:45

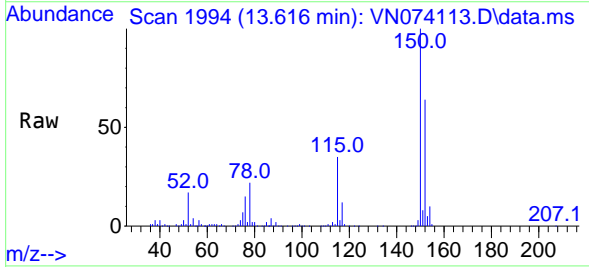
Instrument : MSVOA_N
 ClientSampleId : MW-103I



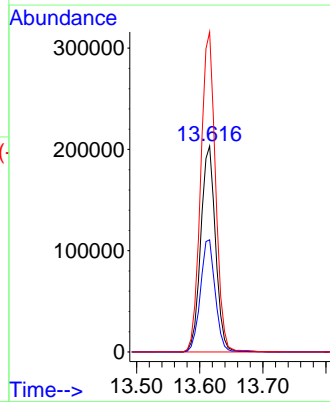
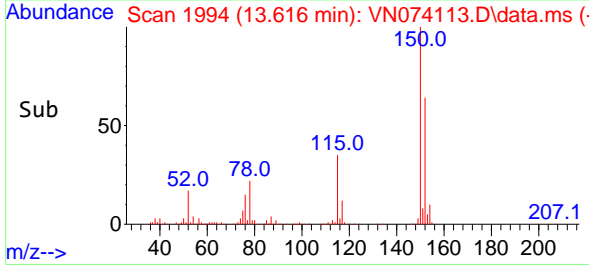
Tgt Ion:112 Resp: 5975
 Ion Ratio Lower Upper
 112 100
 114 26.3 25.4 38.2

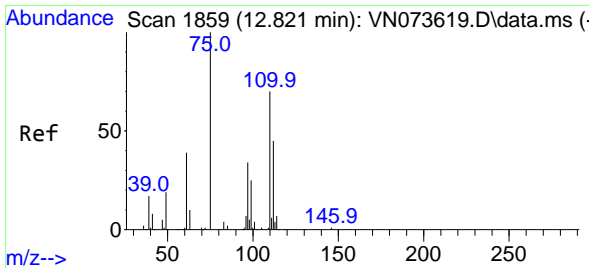


#72
 1,4-Dichlorobenzene-d4
 Concen: 50.000 ug/l
 RT: 13.616 min Scan# 1994
 Delta R.T. 0.001 min
 Lab File: VN074113.D
 Acq: 25 Aug 2022 14:45



Tgt Ion:152 Resp: 330123
 Ion Ratio Lower Upper
 152 100
 115 54.8 28.9 86.7
 150 156.2 0.0 356.2

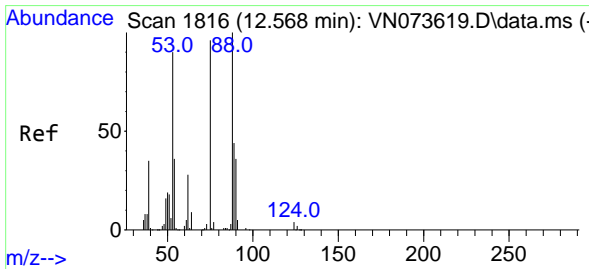
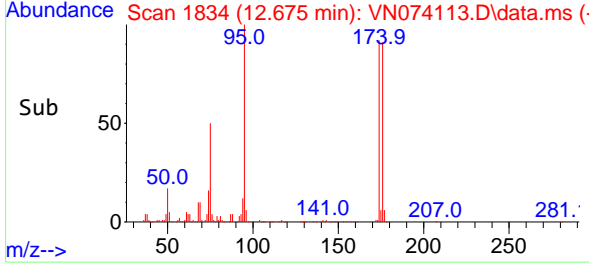
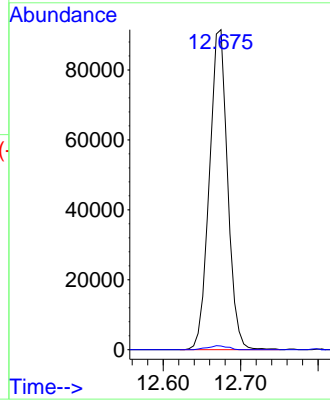
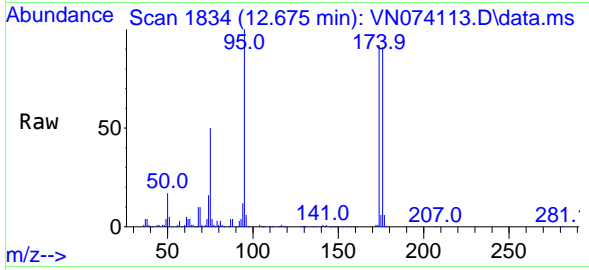




#76
 1,2,3-Trichloropropane
 Concen: 21.853 ug/l
 RT: 12.675 min Scan# 1834
 Delta R.T. -0.146 min
 Lab File: VN074113.D
 Acq: 25 Aug 2022 14:45

Instrument : MSVOA_N
 ClientSampleId : MW-103I

Tgt Ion: 75 Resp: 149946
 Ion Ratio Lower Upper
 75 100
 77 1.4 98.5 295.5#



#81
 trans-1,4-Dichloro-2-butene
 Concen: 62.154 ug/l
 RT: 12.675 min Scan# 1834
 Delta R.T. 0.107 min
 Lab File: VN074113.D
 Acq: 25 Aug 2022 14:45

Tgt Ion: 75 Resp: 149946
 Ion Ratio Lower Upper
 75 100
 53 0.1 78.0 117.0#
 89 0.0 37.2 55.8#

