

Data Path : Z:\voasrv\HPCHEM1\MSVOA_N\Data\VN082522\
 Data File : VN074123.D
 Acq On : 25 Aug 2022 18:52
 Operator : JC\MD
 Sample : N4280-10DL 5X
 Misc : 5.0mL/MSVOA_N/WATER
 ALS Vial : 19 Sample Multiplier: 1

Instrument :
 MSVOA_N
 ClientSampleId :
 RE103D2-20220818DL

Quant Time: Aug 26 02:05:24 2022
 Quant Method : Z:\voasrv\HPCHEM1\MSVOA_N\methods\82N081522W.M
 Quant Title : SW846 8260
 QLast Update : Tue Aug 16 00:45:21 2022
 Response via : Initial Calibration

Compound	R.T.	QIon	Response	Conc	Units	Dev(Min)

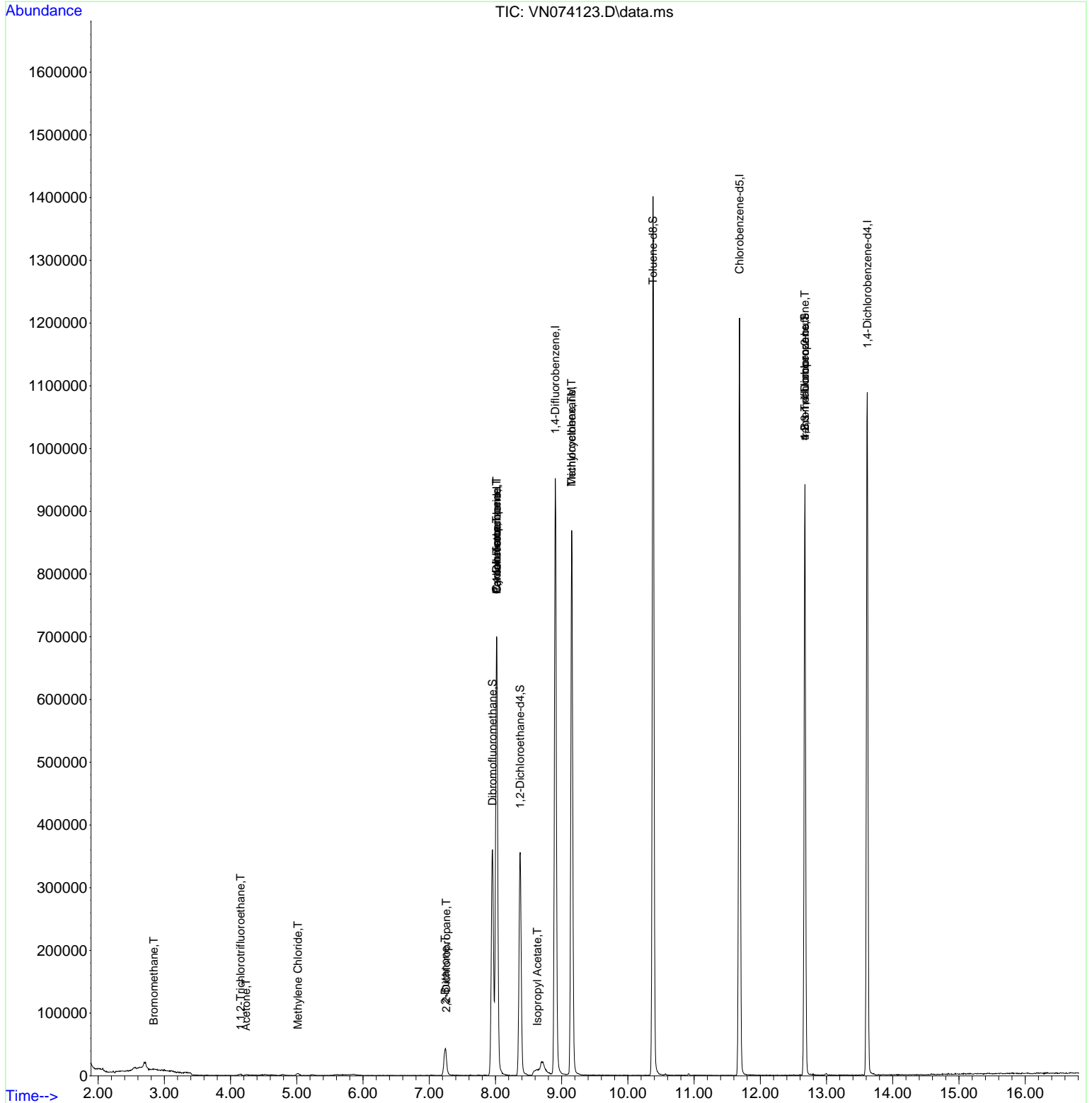
Internal Standards						
1) Pentafluorobenzene	8.022	168	586312	50.000	ug/l	0.00
34) 1,4-Difluorobenzene	8.904	114	894789	50.000	ug/l	0.00
63) Chlorobenzene-d5	11.686	117	737599	50.000	ug/l	0.00
72) 1,4-Dichlorobenzene-d4	13.615	152	323547	50.000	ug/l	0.00
System Monitoring Compounds						
33) 1,2-Dichloroethane-d4	8.375	65	305755	53.541	ug/l	0.00
Spiked Amount	50.000	Range 74 - 125	Recovery	=	107.080%	
35) Dibromofluoromethane	7.957	113	269424	50.915	ug/l	0.00
Spiked Amount	50.000	Range 75 - 124	Recovery	=	101.820%	
50) Toluene-d8	10.380	98	986674	48.144	ug/l	0.00
Spiked Amount	50.000	Range 86 - 113	Recovery	=	96.280%	
62) 4-Bromofluorobenzene	12.674	95	302657	44.497	ug/l	0.00
Spiked Amount	50.000	Range 83 - 123	Recovery	=	89.000%	
Target Compounds						
						Qvalue
5) Bromomethane	2.840	94	1132	0.273	ug/l #	80
9) 1,1,2-Trichlorotrifluo...	4.151	101	1795	0.361	ug/l #	57
16) Acetone	4.234	43	2532	0.940	ug/l #	80
18) Methyl Acetate	4.775	43	1254	Below Cal	#	79
20) Methylene Chloride	5.016	84	2594	0.456	ug/l #	92
25) 2-Butanone	7.239	43	2135	0.500	ug/l #	45
26) 2,2-Dichloropropane	7.257	77	3281	0.386	ug/l #	53
31) Cyclohexane	8.016	56	9429	1.184	ug/l #	10
36) 1,1-Dichloropropene	8.016	75	38435	5.229	ug/l #	49
38) Carbon Tetrachloride	8.022	117	52146	6.207	ug/l #	16
39) Methylcyclohexane	9.151	83	4369	0.474	ug/l #	1
43) Isopropyl Acetate	8.633	43	12411	0.978	ug/l #	53
44) Trichloroethene	9.151	130	341158	50.918	ug/l #	99
76) 1,2,3-Trichloropropane	12.674	75	150773	22.420	ug/l #	1
81) trans-1,4-Dichloro-2-b...	12.674	75	150773	63.767	ug/l #	11

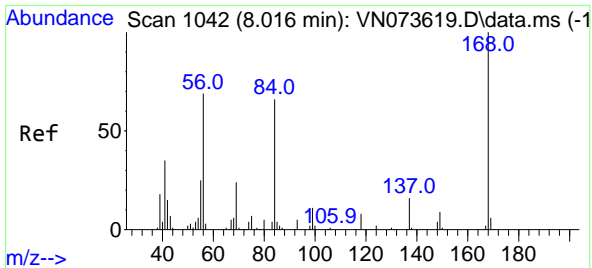
(#) = qualifier out of range (m) = manual integration (+) = signals summed

Data Path : Z:\voasrv\HPCHEM1\MSVOA_N\Data\VN082522\
 Data File : VN074123.D
 Acq On : 25 Aug 2022 18:52
 Operator : JC\MD
 Sample : N4280-10DL 5X
 Misc : 5.0mL/MSVOA_N/WATER
 ALS Vial : 19 Sample Multiplier: 1

Instrument :
 MSVOA_N
 ClientSampleId :
 RE103D2-20220818DL

Quant Time: Aug 26 02:05:24 2022
 Quant Method : Z:\voasrv\HPCHEM1\MSVOA_N\methods\82N081522W.M
 Quant Title : SW846 8260
 QLast Update : Tue Aug 16 00:45:21 2022
 Response via : Initial Calibration

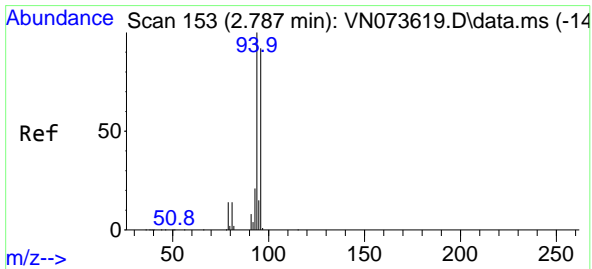
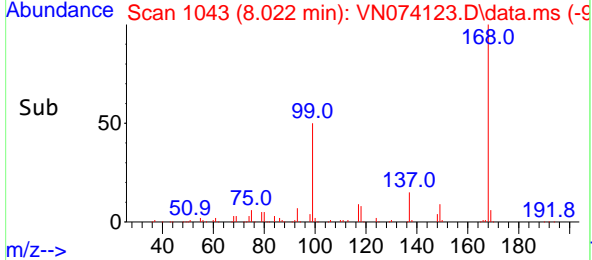
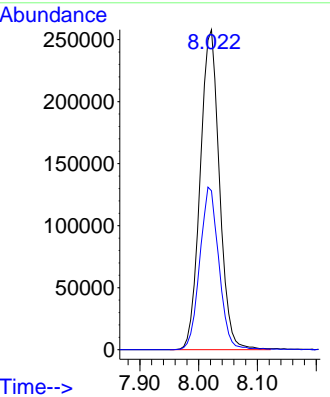
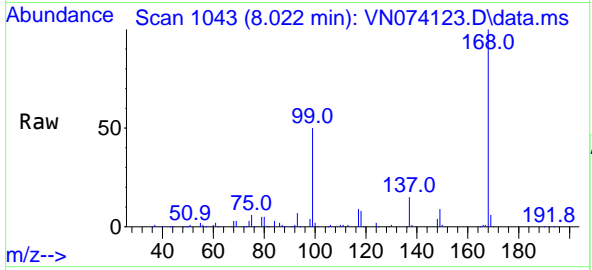




#1
 Pentafluorobenzene
 Concen: 50.000 ug/l
 RT: 8.022 min Scan# 10
 Delta R.T. 0.006 min
 Lab File: VN074123.D
 Acq: 25 Aug 2022 18:52

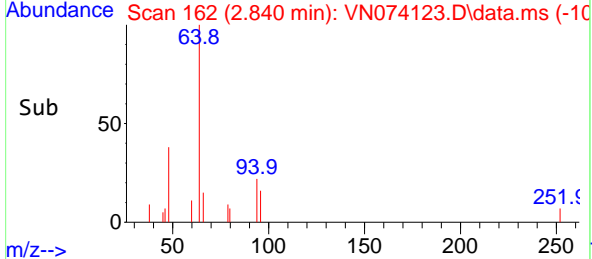
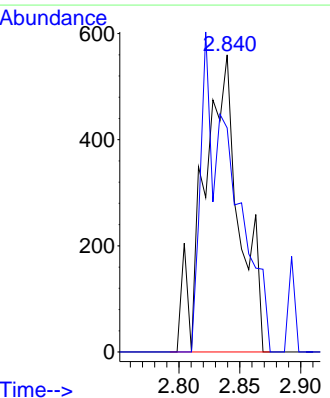
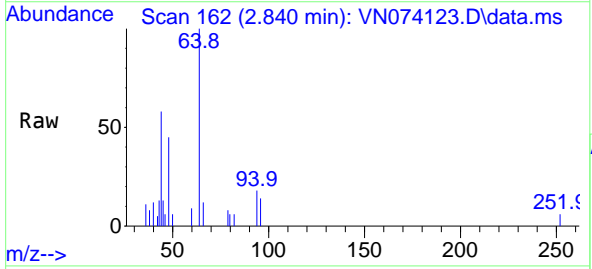
Instrument : MSVOA_N
 ClientSampleId : RE103D2-20220818DL

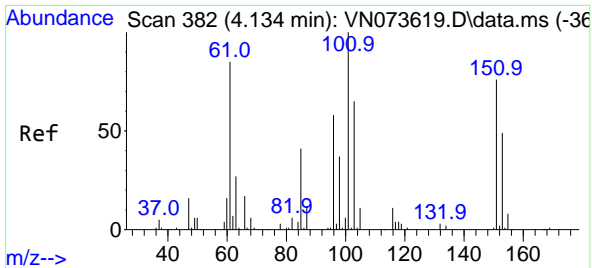
Tgt Ion:168 Resp: 586312
 Ion Ratio Lower Upper
 168 100
 99 49.7 42.3 63.5



#5
 Bromomethane
 Concen: 0.273 ug/l
 RT: 2.840 min Scan# 162
 Delta R.T. 0.053 min
 Lab File: VN074123.D
 Acq: 25 Aug 2022 18:52

Tgt Ion: 94 Resp: 1132
 Ion Ratio Lower Upper
 94 100
 96 75.4 76.0 114.0#



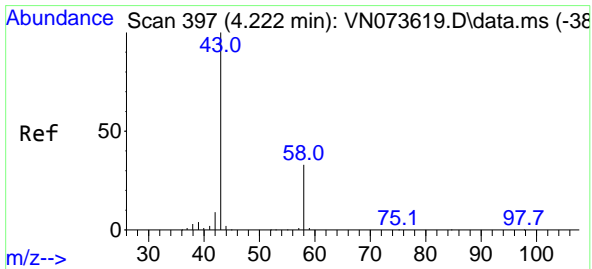
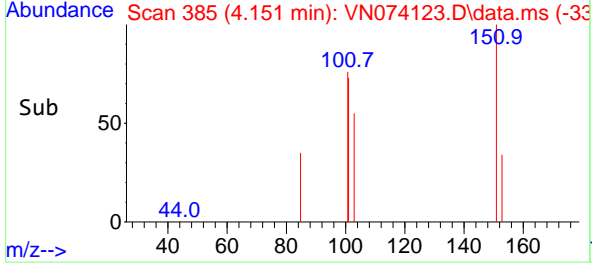
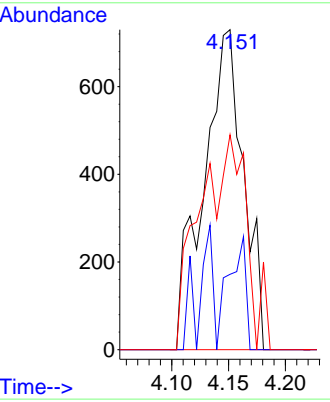
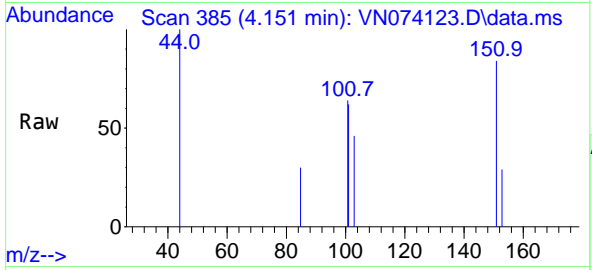


#9
 1,1,2-Trichlorotrifluoroethane
 Concen: 0.361 ug/l
 RT: 4.151 min Scan# 385
 Delta R.T. 0.017 min
 Lab File: VN074123.D
 Acq: 25 Aug 2022 18:52

Instrument : MSVOA_N
 ClientSampleId : RE103D2-20220818DL

Tgt Ion:101 Resp: 1795

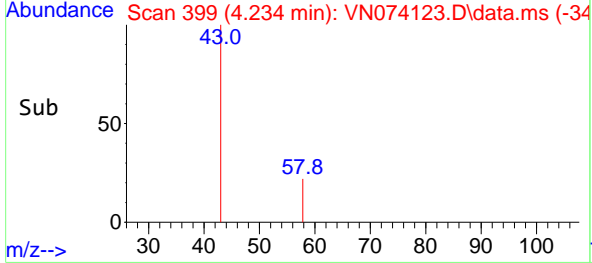
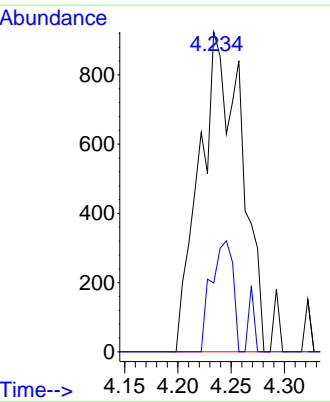
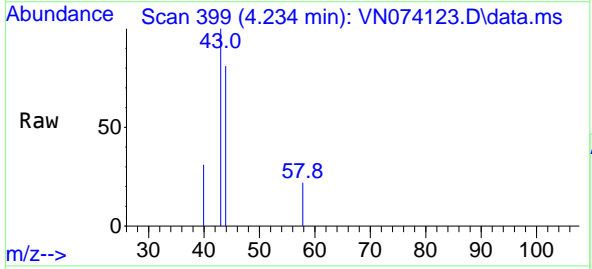
Ion	Ratio	Lower	Upper
101	100		
85	15.2	34.7	52.1#
151	42.0	63.0	94.4#

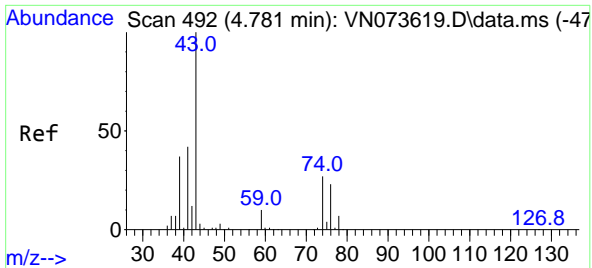


#16
 Acetone
 Concen: 0.940 ug/l
 RT: 4.234 min Scan# 399
 Delta R.T. 0.012 min
 Lab File: VN074123.D
 Acq: 25 Aug 2022 18:52

Tgt Ion: 43 Resp: 2532

Ion	Ratio	Lower	Upper
43	100		
58	21.5	26.0	39.0#

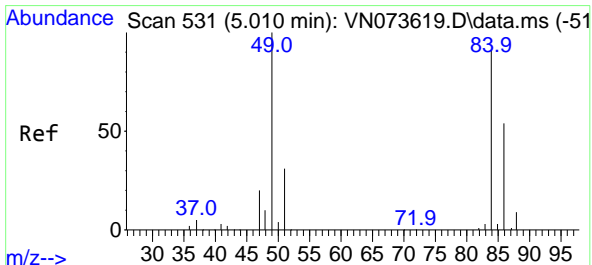
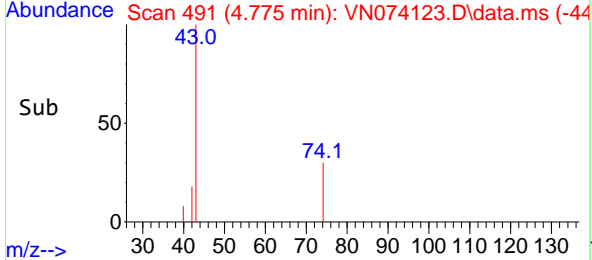
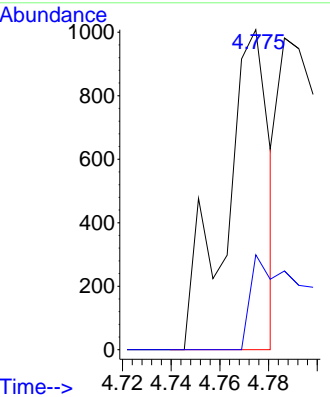
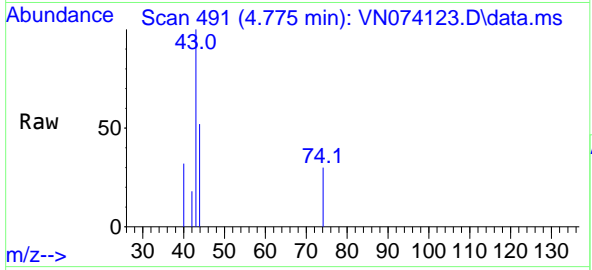




#18
 Methyl Acetate
 Concen: Below Cal
 RT: 4.775 min Scan# 491
 Delta R.T. -0.006 min
 Lab File: VN074123.D
 Acq: 25 Aug 2022 18:52

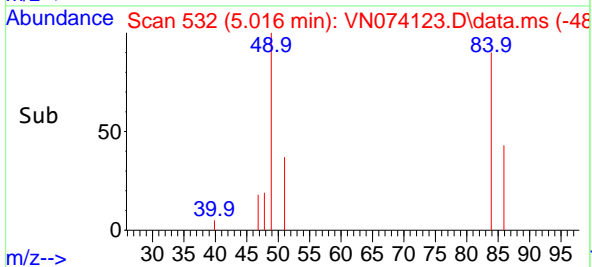
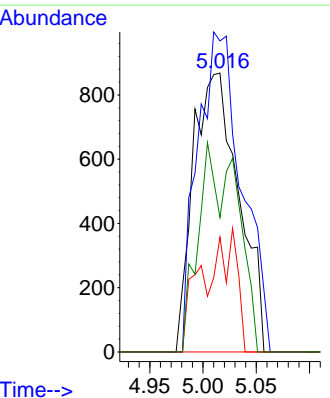
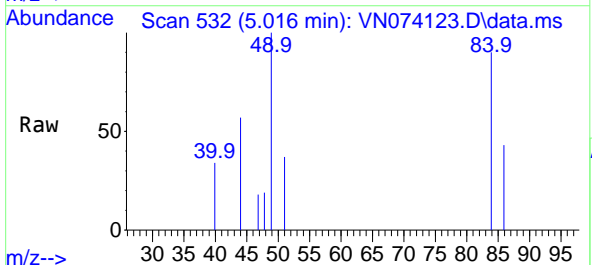
Instrument : MSVOA_N
 Client Sample Id : RE103D2-20220818DL

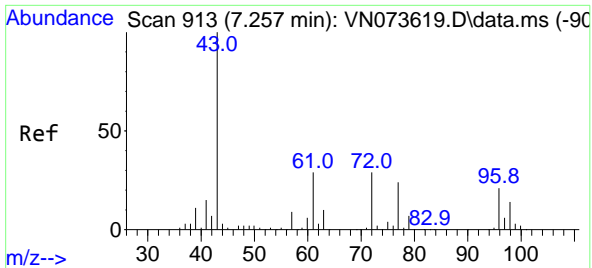
Tgt Ion: 43 Resp: 1254
 Ion Ratio Lower Upper
 43 100
 74 37.7 21.6 32.4#



#20
 Methylene Chloride
 Concen: 0.456 ug/l
 RT: 5.016 min Scan# 532
 Delta R.T. 0.006 min
 Lab File: VN074123.D
 Acq: 25 Aug 2022 18:52

Tgt Ion: 84 Resp: 2594
 Ion Ratio Lower Upper
 84 100
 49 111.5 88.3 132.5
 51 41.1 28.2 42.2
 86 48.3 50.6 76.0#

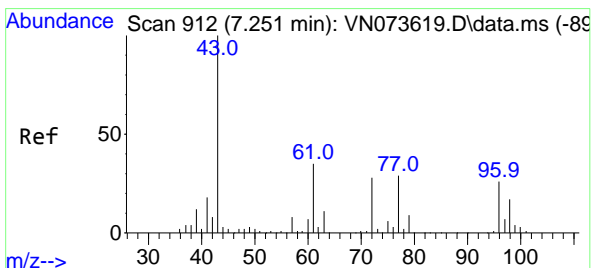
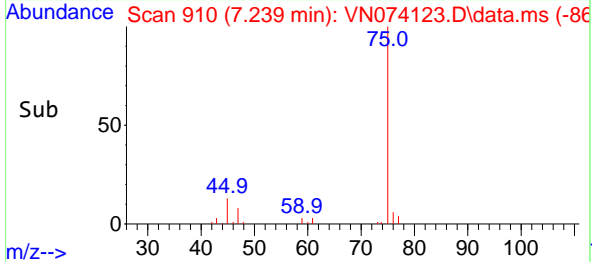
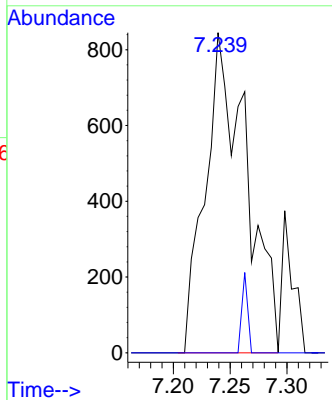
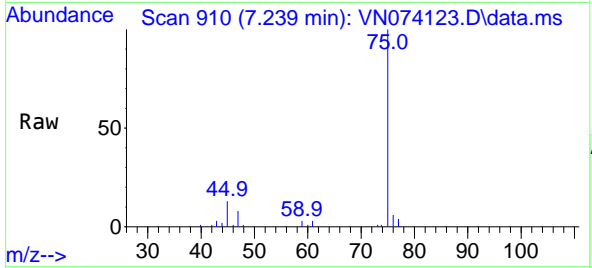




#25
 2-Butanone
 Concen: 0.500 ug/l
 RT: 7.239 min Scan# 913
 Delta R.T. -0.018 min
 Lab File: VN074123.D
 Acq: 25 Aug 2022 18:52

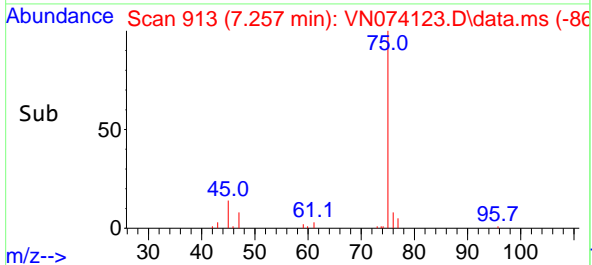
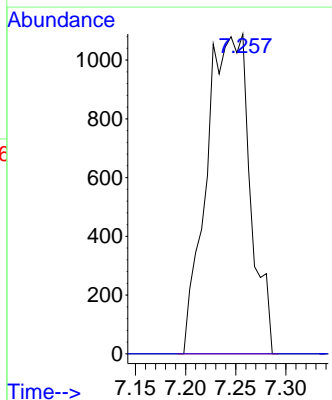
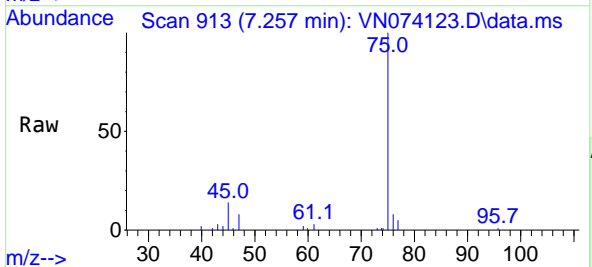
Instrument : MSVOA_N
 ClientSampleId : RE103D2-20220818DL

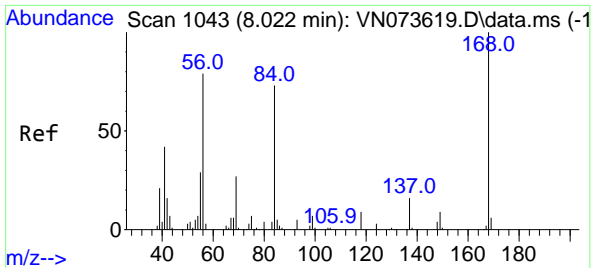
Tgt Ion: 43 Resp: 2135
 Ion Ratio Lower Upper
 43 100
 72 0.0 23.7 35.5#



#26
 2,2-Dichloropropane
 Concen: 0.386 ug/l
 RT: 7.257 min Scan# 913
 Delta R.T. 0.006 min
 Lab File: VN074123.D
 Acq: 25 Aug 2022 18:52

Tgt Ion: 77 Resp: 3281
 Ion Ratio Lower Upper
 77 100
 97 0.0 11.4 34.2#



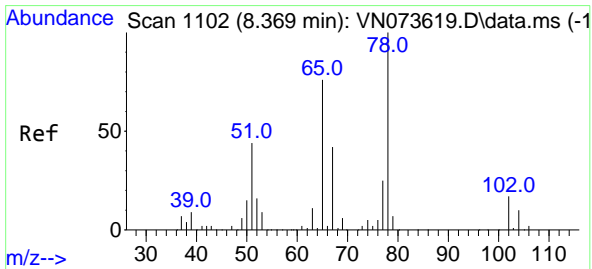
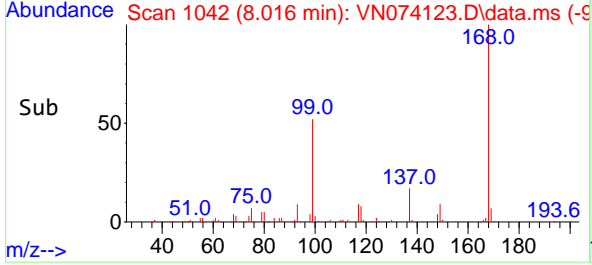
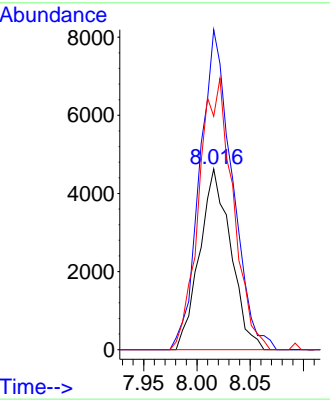
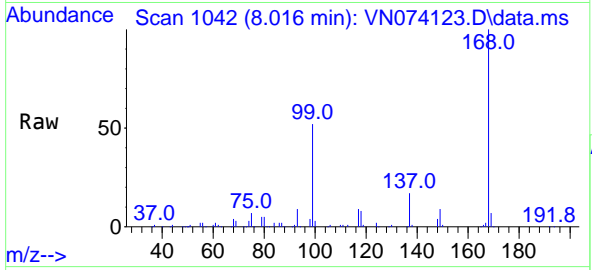


#31
 Cyclohexane
 Concen: 1.184 ug/l
 RT: 8.016 min Scan# 1103
 Delta R.T. -0.006 min
 Lab File: VN074123.D
 Acq: 25 Aug 2022 18:52

Instrument : MSVOA_N
 ClientSampleId : RE103D2-20220818DL

Tgt Ion: 56 Resp: 9429

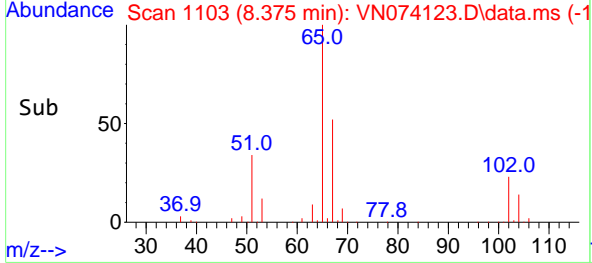
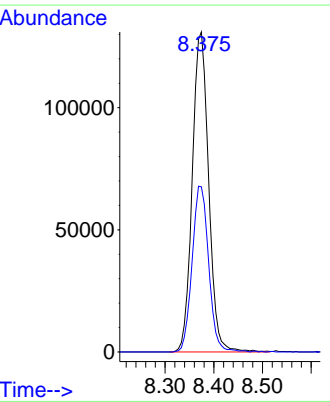
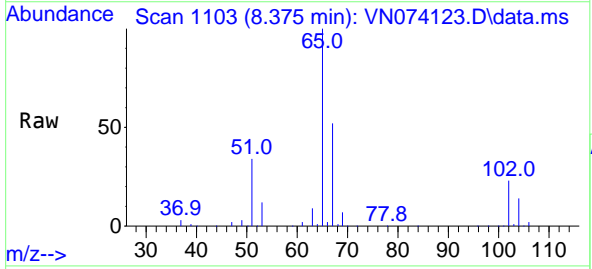
Ion	Ratio	Lower	Upper
56	100		
69	176.9	27.8	41.8#
84	129.1	76.9	115.3#

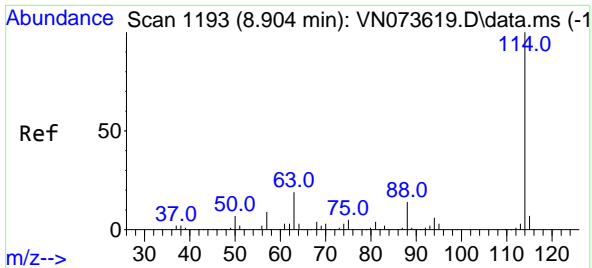


#33
 1,2-Dichloroethane-d4
 Concen: 53.541 ug/l
 RT: 8.375 min Scan# 1103
 Delta R.T. 0.006 min
 Lab File: VN074123.D
 Acq: 25 Aug 2022 18:52

Tgt Ion: 65 Resp: 305755

Ion	Ratio	Lower	Upper
65	100		
67	52.4	0.0	104.8



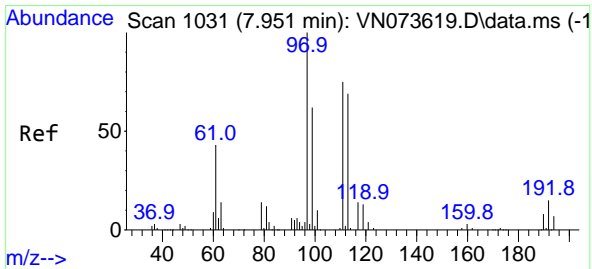
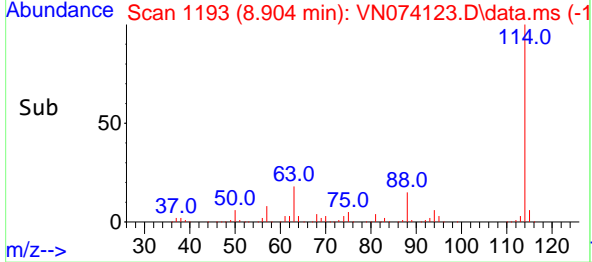
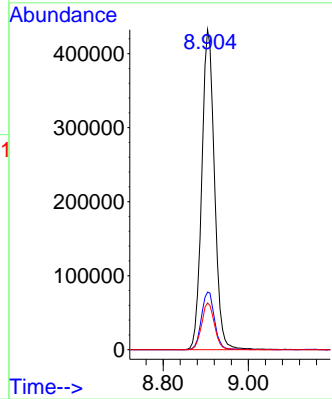
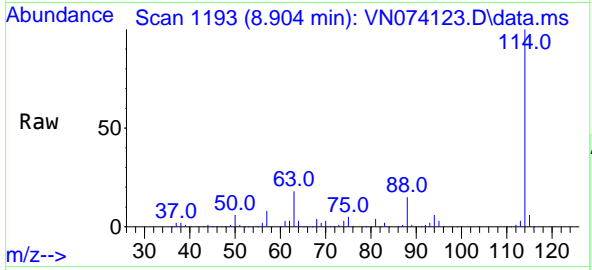


#34
 1,4-Difluorobenzene
 Concen: 50.000 ug/l
 RT: 8.904 min Scan# 1119
 Delta R.T. -0.000 min
 Lab File: VN074123.D
 Acq: 25 Aug 2022 18:52

Instrument : MSVOA_N
 ClientSampleId : RE103D2-20220818DL

Tgt Ion:114 Resp: 894789

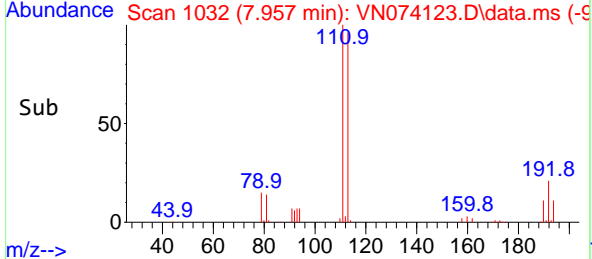
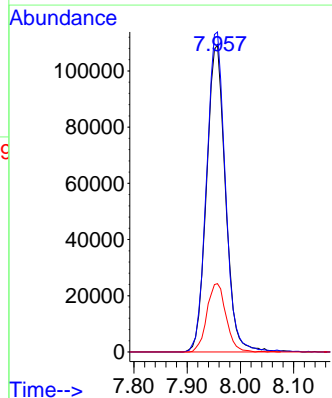
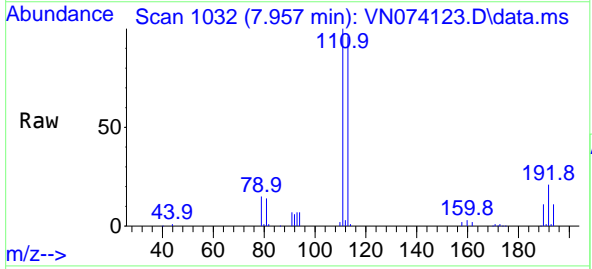
Ion	Ratio	Lower	Upper
114	100		
63	18.0	0.0	40.0
88	14.6	0.0	32.6

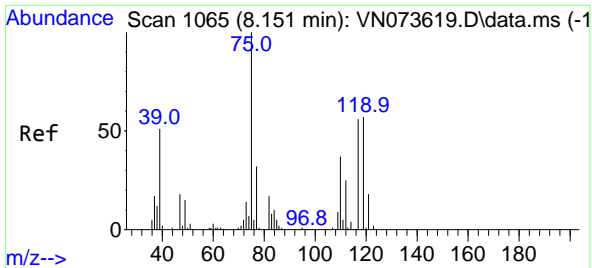


#35
 Dibromofluoromethane
 Concen: 50.915 ug/l
 RT: 7.957 min Scan# 1032
 Delta R.T. 0.006 min
 Lab File: VN074123.D
 Acq: 25 Aug 2022 18:52

Tgt Ion:113 Resp: 269424

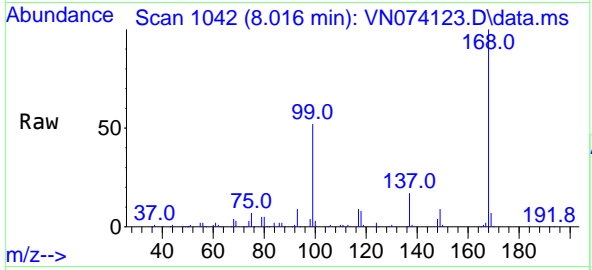
Ion	Ratio	Lower	Upper
113	100		
111	103.4	81.4	122.0
192	22.5	17.0	25.6





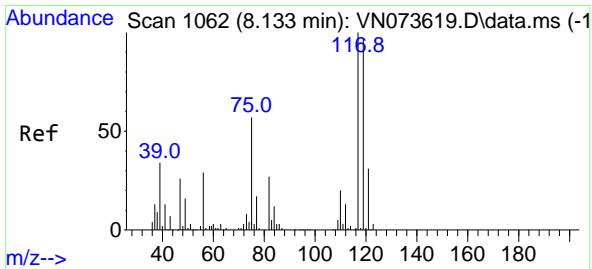
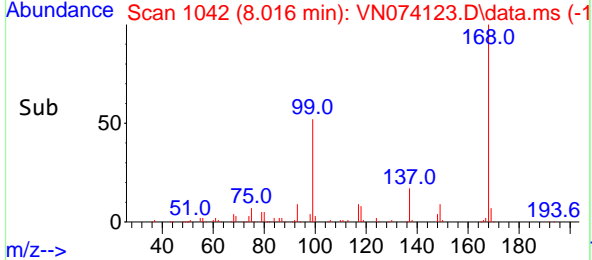
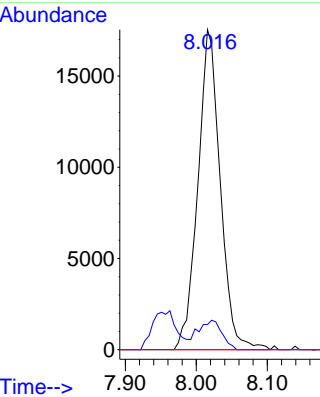
#36
 1,1-Dichloropropene
 Concen: 5.229 ug/l
 RT: 8.016 min Scan# 1042
 Delta R.T. -0.135 min
 Lab File: VN074123.D
 Acq: 25 Aug 2022 18:52

Instrument : MSVOA_N
 ClientSampleId : RE103D2-20220818DL

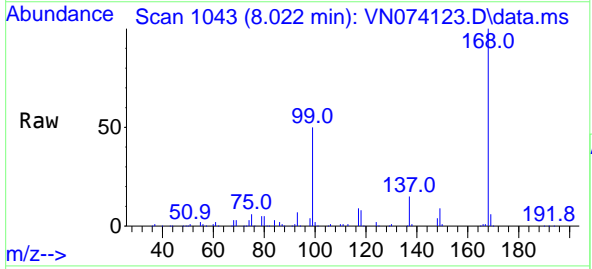


Tgt Ion: 75 Resp: 38435

Ion	Ratio	Lower	Upper
75	100		
110	9.5	18.3	54.8#
77	0.0	25.1	37.7#

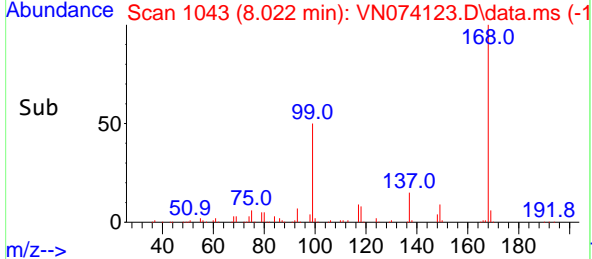
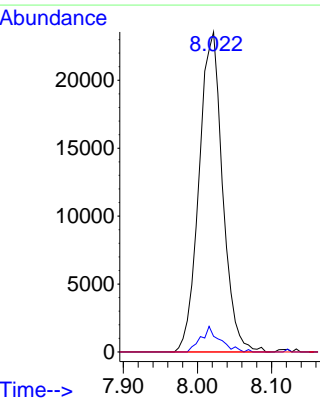


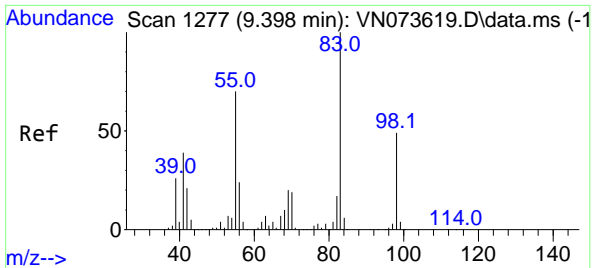
#38
 Carbon Tetrachloride
 Concen: 6.207 ug/l
 RT: 8.022 min Scan# 1043
 Delta R.T. -0.111 min
 Lab File: VN074123.D
 Acq: 25 Aug 2022 18:52



Tgt Ion: 117 Resp: 52146

Ion	Ratio	Lower	Upper
117	100		
119	4.9	75.8	113.8#
121	0.0	24.6	37.0#



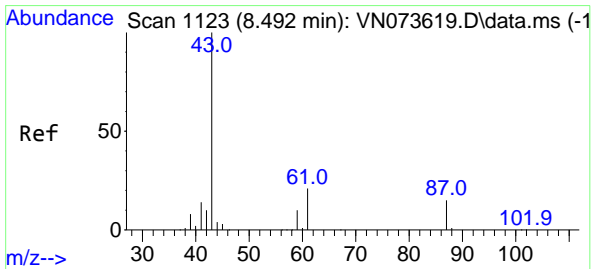
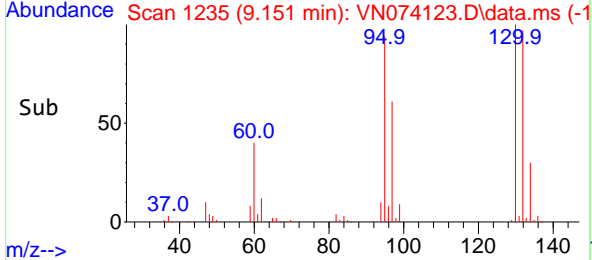
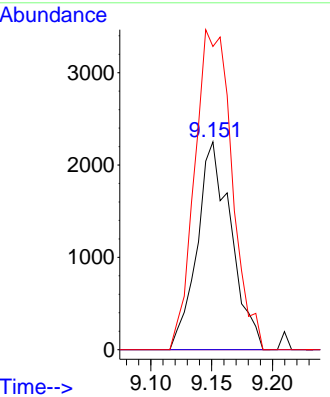
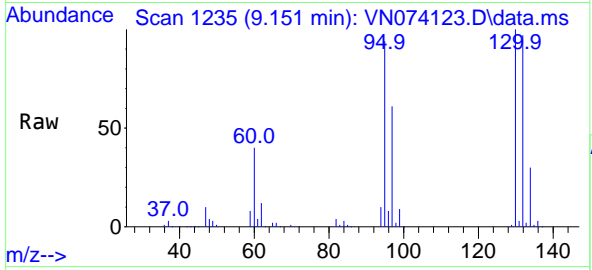


#39
 Methylcyclohexane
 Concen: 0.474 ug/l
 RT: 9.151 min Scan# 1147
 Delta R.T. -0.247 min
 Lab File: VN074123.D
 Acq: 25 Aug 2022 18:52

Instrument : MSVOA_N
 ClientSampleId : RE103D2-20220818DL

Tgt Ion: 83 Resp: 4369

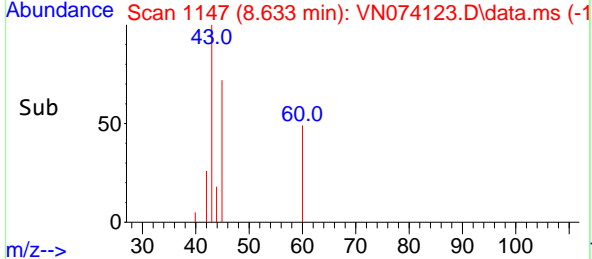
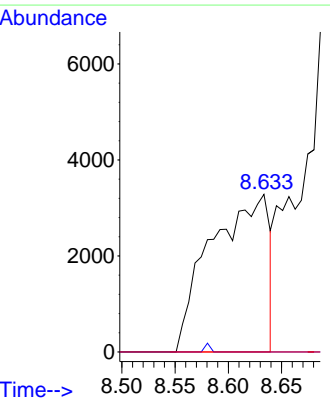
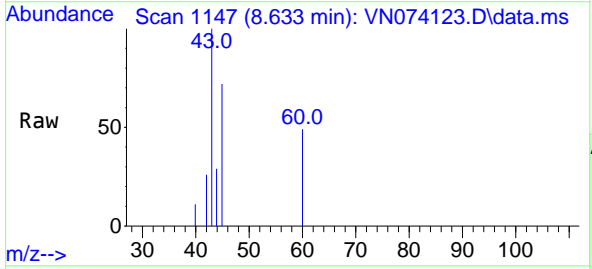
Ion	Ratio	Lower	Upper
83	100		
55	0.0	57.8	86.8#
98	145.8	39.4	59.2#

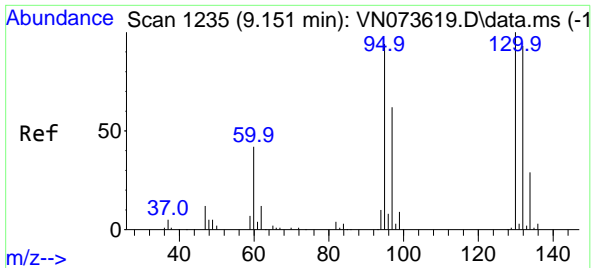


#43
 Isopropyl Acetate
 Concen: 0.978 ug/l
 RT: 8.633 min Scan# 1147
 Delta R.T. 0.141 min
 Lab File: VN074123.D
 Acq: 25 Aug 2022 18:52

Tgt Ion: 43 Resp: 12411

Ion	Ratio	Lower	Upper
43	100		
61	0.0	21.9	32.9#
87	0.0	12.0	18.0#

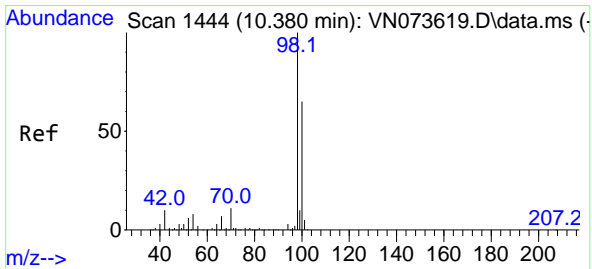
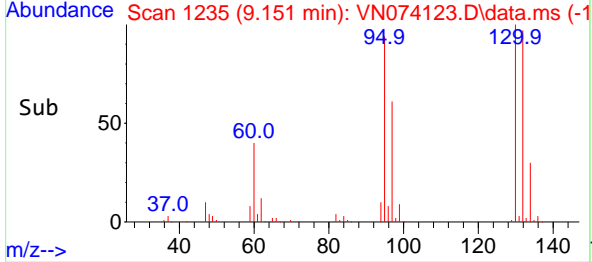
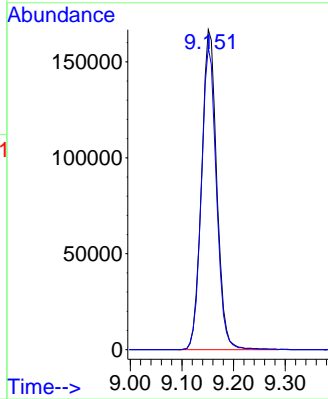
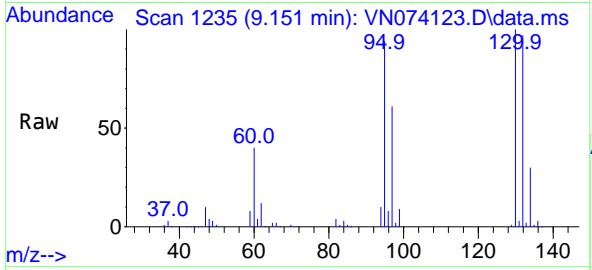




#44
 Trichloroethene
 Concen: 50.918 ug/l
 RT: 9.151 min Scan# 111
 Delta R.T. -0.000 min
 Lab File: VN074123.D
 Acq: 25 Aug 2022 18:52

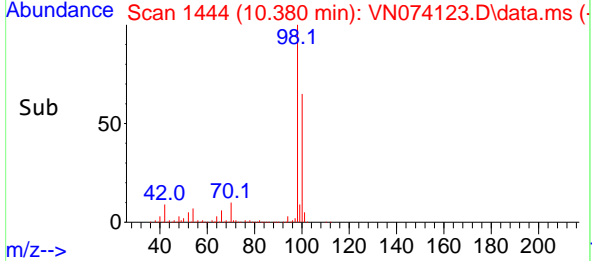
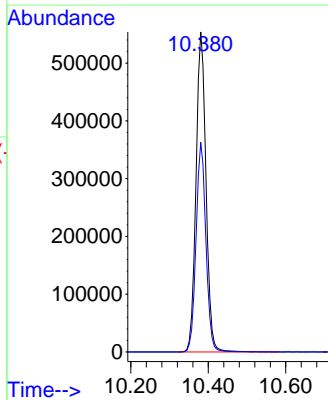
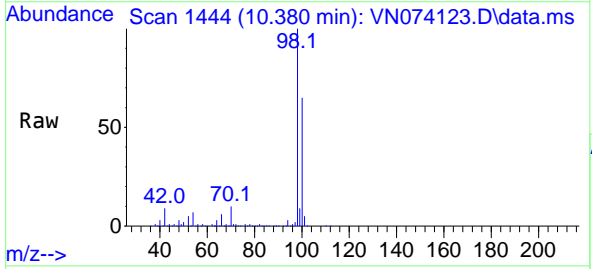
Instrument : MSVOA_N
 ClientSampleId : RE103D2-20220818DL

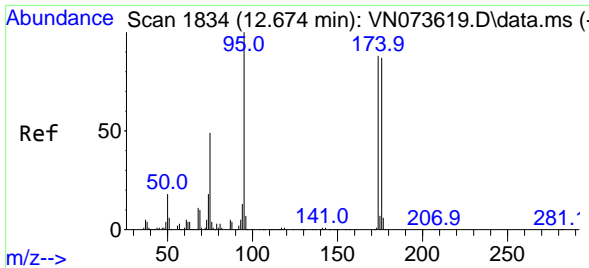
Tgt Ion:130 Resp: 341158
 Ion Ratio Lower Upper
 130 100
 95 94.4 0.0 186.8



#50
 Toluene-d8
 Concen: 48.144 ug/l
 RT: 10.380 min Scan# 1444
 Delta R.T. 0.000 min
 Lab File: VN074123.D
 Acq: 25 Aug 2022 18:52

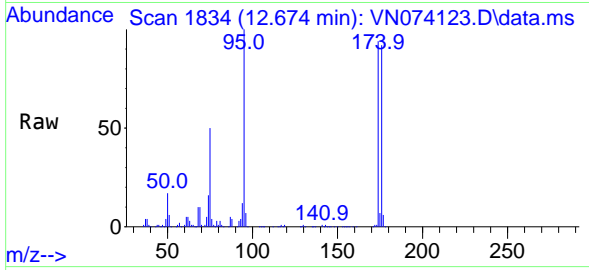
Tgt Ion: 98 Resp: 986674
 Ion Ratio Lower Upper
 98 100
 100 64.8 52.6 78.8





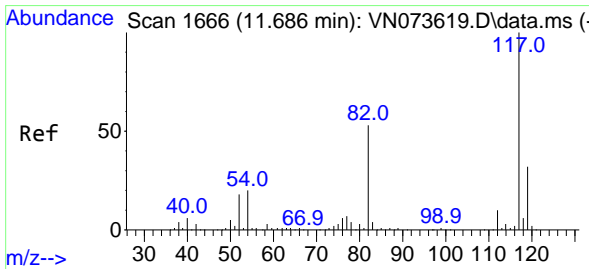
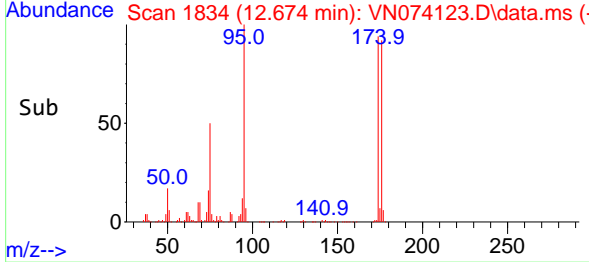
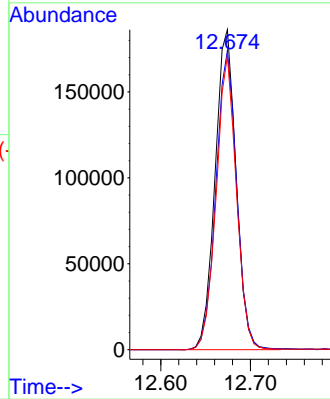
#62
 4-Bromofluorobenzene
 Concen: 44.497 ug/l
 RT: 12.674 min Scan# 1834
 Delta R.T. 0.000 min
 Lab File: VN074123.D
 Acq: 25 Aug 2022 18:52

Instrument : MSVOA_N
 ClientSampleId : RE103D2-20220818DL



Tgt Ion: 95 Resp: 302657

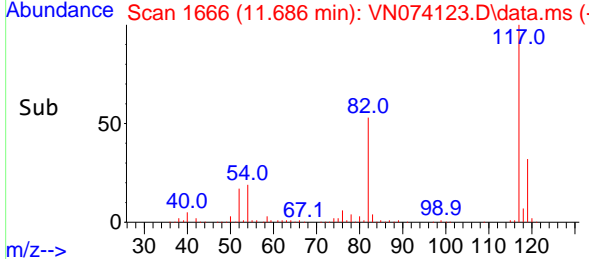
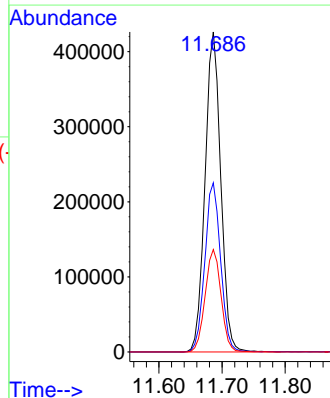
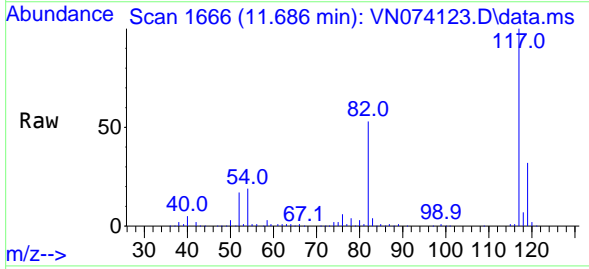
Ion	Ratio	Lower	Upper
95	100		
174	92.6	0.0	167.6
176	88.2	0.0	163.4

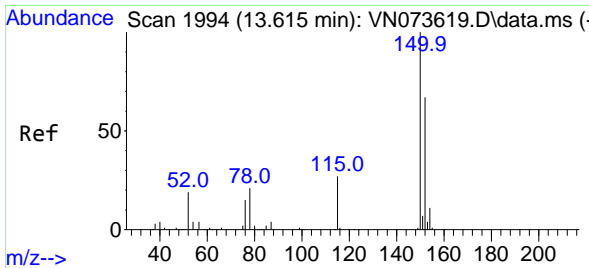


#63
 Chlorobenzene-d5
 Concen: 50.000 ug/l
 RT: 11.686 min Scan# 1666
 Delta R.T. 0.000 min
 Lab File: VN074123.D
 Acq: 25 Aug 2022 18:52

Tgt Ion: 117 Resp: 737599

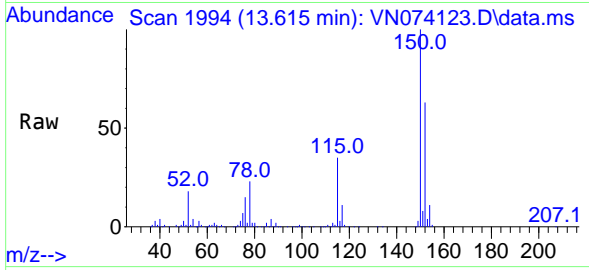
Ion	Ratio	Lower	Upper
117	100		
82	52.9	44.2	66.2
119	32.0	25.4	38.0



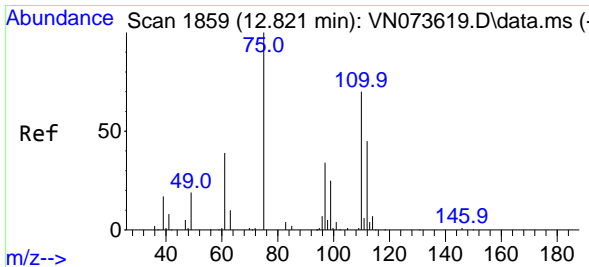
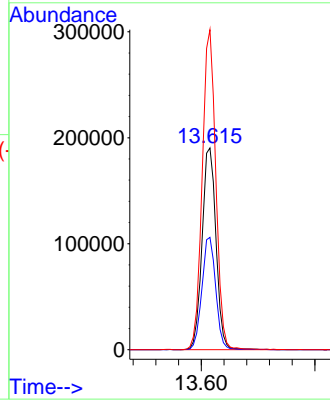
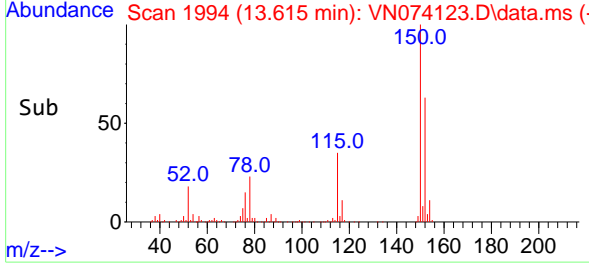


#72
 1,4-Dichlorobenzene-d4
 Concen: 50.000 ug/l
 RT: 13.615 min Scan# 1994
 Delta R.T. 0.000 min
 Lab File: VN074123.D
 Acq: 25 Aug 2022 18:52

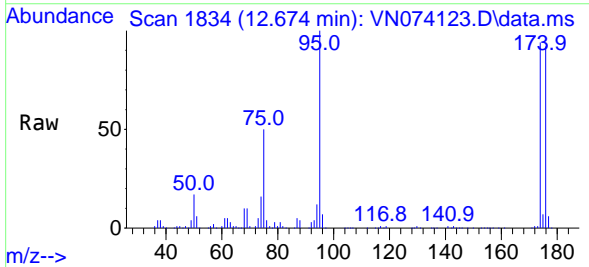
Instrument : MSVOA_N
 ClientSampleId : RE103D2-20220818DL



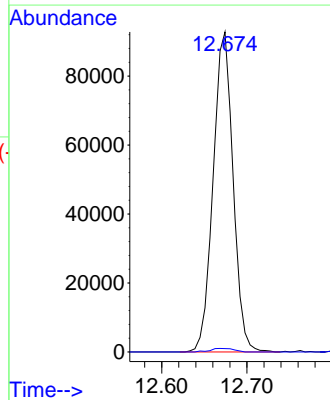
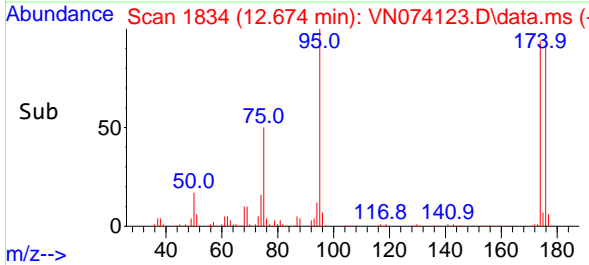
Tgt Ion:152 Resp: 323547
 Ion Ratio Lower Upper
 152 100
 115 55.3 28.9 86.7
 150 154.8 0.0 356.2

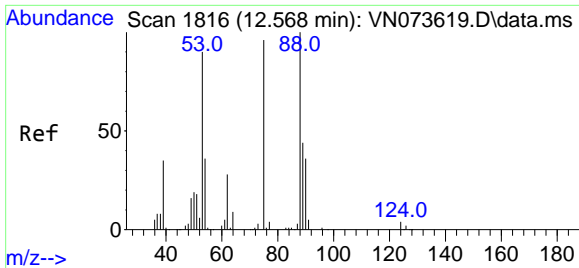


#76
 1,2,3-Trichloropropane
 Concen: 22.420 ug/l
 RT: 12.674 min Scan# 1834
 Delta R.T. -0.147 min
 Lab File: VN074123.D
 Acq: 25 Aug 2022 18:52



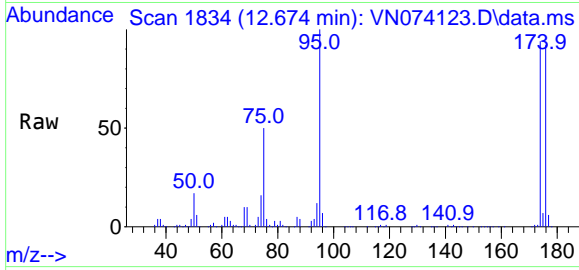
Tgt Ion: 75 Resp: 150773
 Ion Ratio Lower Upper
 75 100
 77 1.3 98.5 295.5#





#81
 trans-1,4-Dichloro-2-butene
 Concen: 63.767 ug/l
 RT: 12.674 min Scan# 11
 Delta R.T. 0.106 min
 Lab File: VN074123.D
 Acq: 25 Aug 2022 18:52

Instrument : MSVOA_N
 ClientSampleId : RE103D2-20220818DL



Tgt Ion: 75 Resp: 150773

Ion	Ratio	Lower	Upper
75	100		
53	0.1	78.0	117.0#
89	0.0	37.2	55.8#

