

Data Path : Z:\VOASRV\HPCHEM1\MSVOA N\DATA\VN082619\
 Data File : VN057529.D
 Acq On : 26 Aug 2019 23:20
 Operator : JC/SP
 Sample : K4493-34
 Misc : 5.00mL/MSVOA N/WATER
 ALS Vial : 33 Sample Multiplier: 1

Instrument :
 MSVOA_N
 ClientSampleId :
 T9-12-13-K2-(0)

Manual Integrations
 APPROVED

MMDadoda
 8/27/2019 5:30:50 PM

Quant Time: Aug 27 08:32:58 2019
 Quant Method : Z:\VOASRV\HPCHEM1\MSVOA_N\METHODS\82N082219W.M
 Quant Title : SW846 8260
 QLast Update : Fri Aug 23 05:07:29 2019
 Response via : Initial Calibration

Internal Standards	R.T.	QIon	Response	Conc	Units	Dev(Min)
1) Pentafluorobenzene	7.65	168	383991	50.00	ug/l	0.00
34) 1,4-Difluorobenzene	8.57	114	683064	50.00	ug/l	0.00
63) Chlorobenzene-d5	11.41	117	578402	50.00	ug/l	0.00
72) 1,4-Dichlorobenzene-d4	13.35	152	143178	50.00	ug/l	0.00
System Monitoring Compounds						
33) 1,2-Dichloroethane-d4	8.01	65	324292	48.01	ug/l	0.00
Spiked Amount	50.000		Recovery	=	96.02%	
35) Dibromofluoromethane	7.58	113	212603	46.08	ug/l	0.00
Spiked Amount	50.000		Recovery	=	92.16%	
50) Toluene-d8	10.08	98	888090	50.91	ug/l	0.00
Spiked Amount	50.000		Recovery	=	101.82%	
62) 4-Bromofluorobenzene	12.40	95	239421	40.50	ug/l	0.00
Spiked Amount	50.000		Recovery	=	81.00%	
Target Compounds						
18) Methyl Acetate	4.31	43	26886	3.122	ug/l	98
20) Methylene Chloride	4.52	84	10427m	2.195	ug/l	
43) Isopropyl Acetate	8.16	43	57723	4.565	ug/l	97

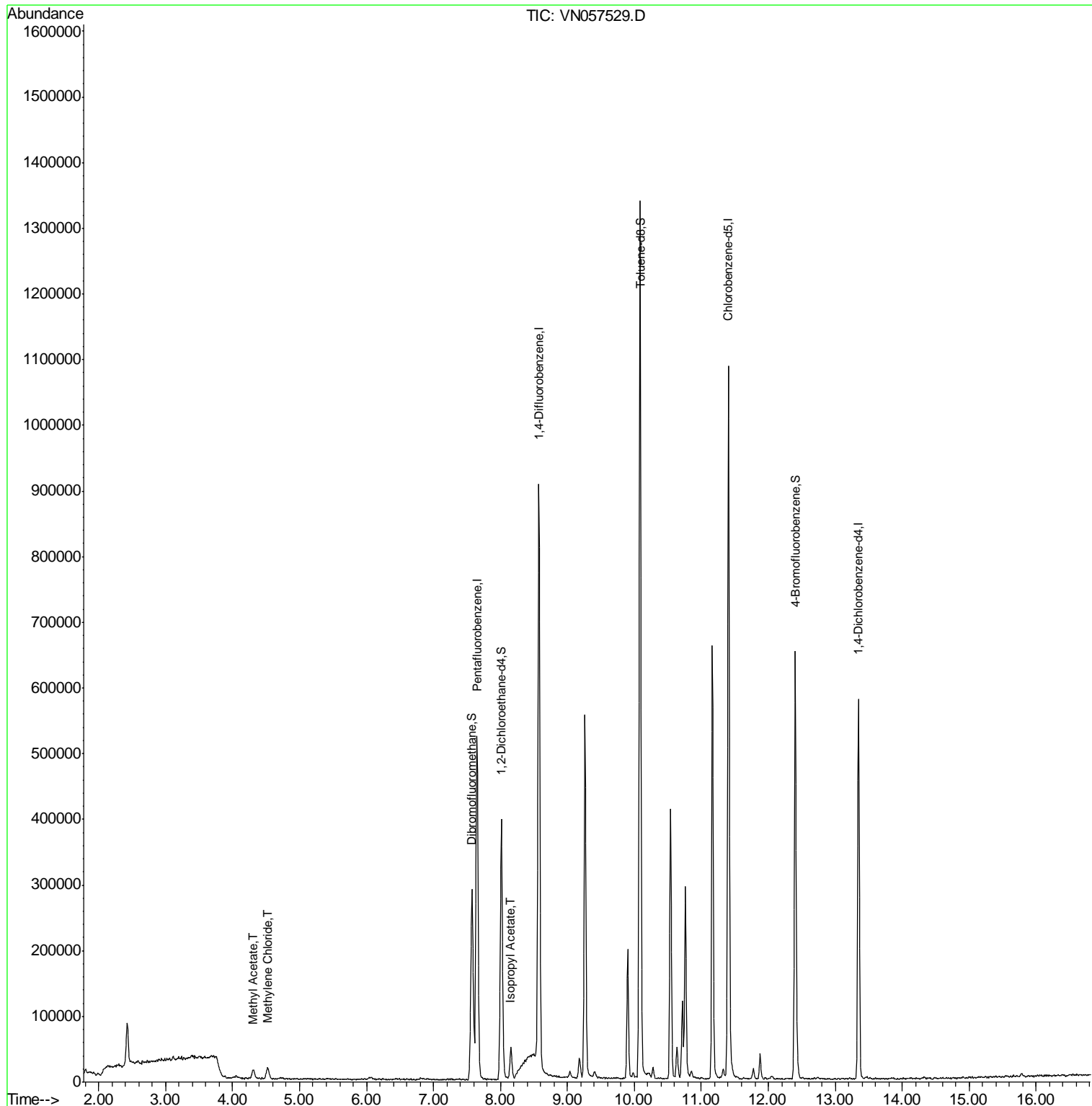
(#) = qualifier out of range (m) = manual integration (+) = signals summed

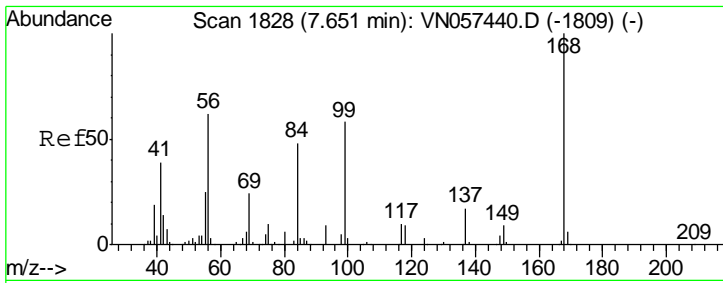
Data Path : Z:\VOASRV\HPCHEM1\MSVOA N\DATA\VN082619\
 Data File : VN057529.D
 Acq On : 26 Aug 2019 23:20
 Operator : JC/SP
 Sample : K4493-34
 Misc : 5.00mL/MSVOA N/WATER
 ALS Vial : 33 Sample Multiplier: 1

Instrument :
 MSVOA_N
Client Sampled :
 T9-12-13-K2-(0)

Manual Integrations
APPROVED
 MMDadoda
 8/27/2019 5:30:50 PM

Quant Time: Aug 27 08:32:58 2019
 Quant Method : Z:\VOASRV\HPCHEM1\MSVOA_N\METHODS\82N082219W.M
 Quant Title : SW846 8260
 QLast Update : Fri Aug 23 05:07:29 2019
 Response via : Initial Calibration





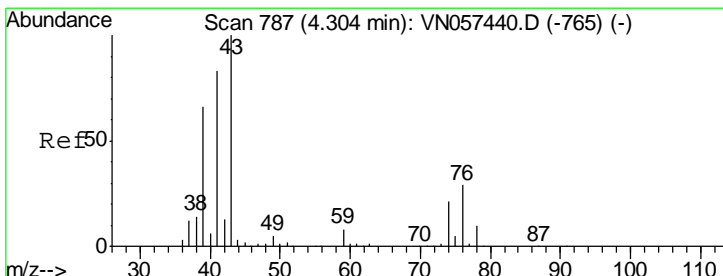
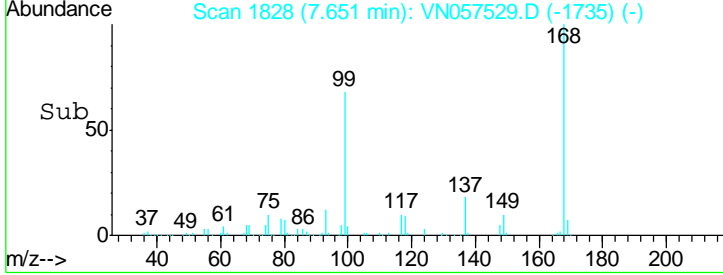
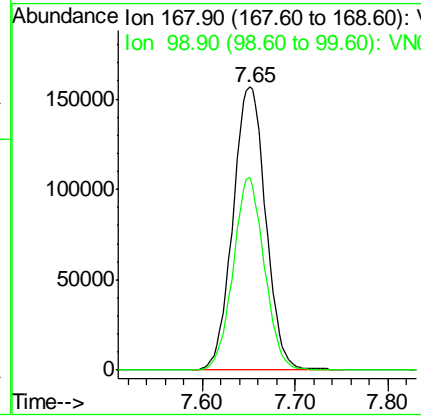
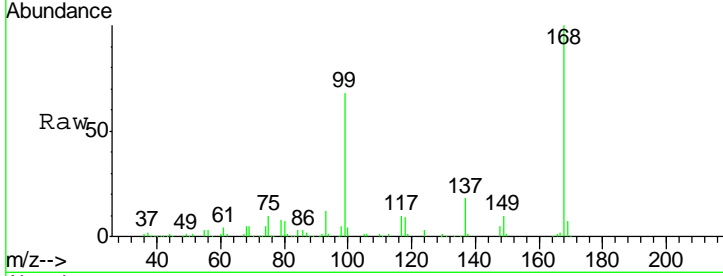
#1
 Pentafluorobenzene
 Concen: 50.000 ug/l
 RT: 7.65 min Scan# 1828
 Delta R.T. -0.00 min
 Lab File: VN057529.D
 Acq: 26 Aug 2019 23:20

Instrument :
 MSVOA_N
 ClientSampled :
 T9-12-13-K2-(0)

Tgt Ion	Resp	Lower	Upper
168	100		
99	67.8	50.6	76.0

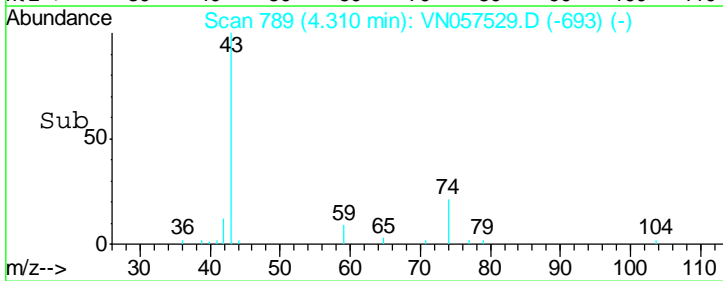
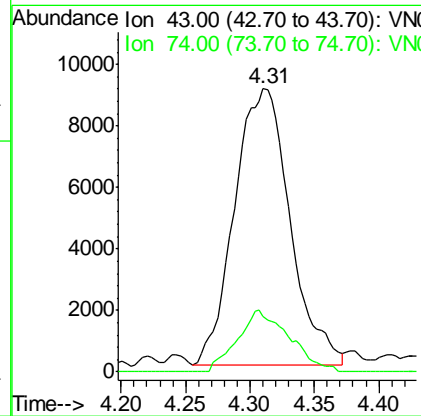
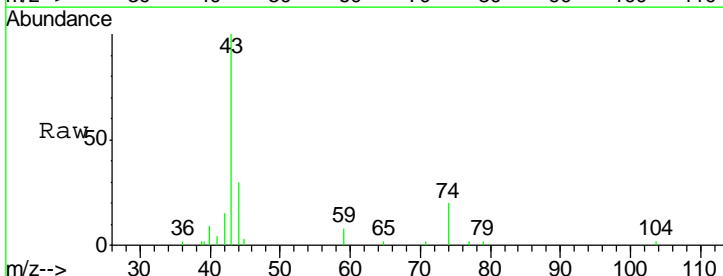
Manual Integrations
 APPROVED

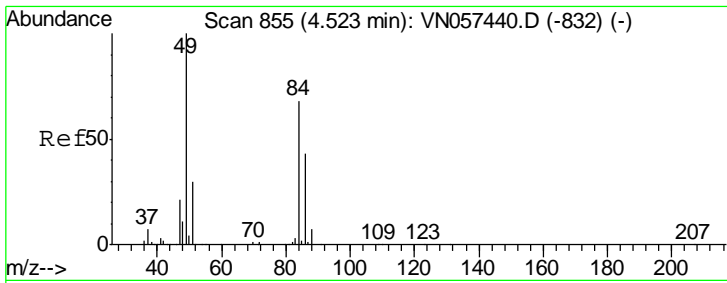
MMDadoda
 8/27/2019 5:30:50 PM



#18
 Methyl Acetate
 Concen: 3.122 ug/l
 RT: 4.31 min Scan# 789
 Delta R.T. 0.01 min
 Lab File: VN057529.D
 Acq: 26 Aug 2019 23:20

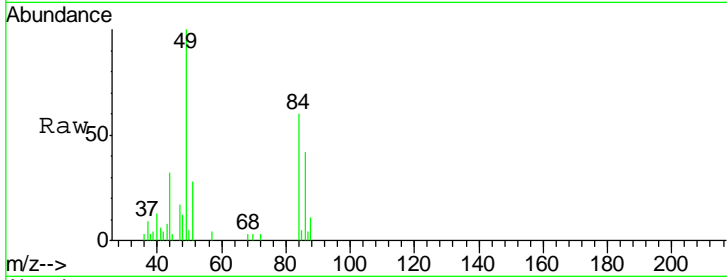
Tgt Ion	Resp	Lower	Upper
43	100		
74	20.8	15.9	23.9





#20
Methylene Chloride
Concen: 2.195 ug/l m
RT: 4.52 min Scan# 854
Delta R.T. -0.00 min
Lab File: VN057529.D
Acq: 26 Aug 2019 23:20

Instrument :
MSVOA_N
ClientSampled :
T9-12-13-K2-(0)

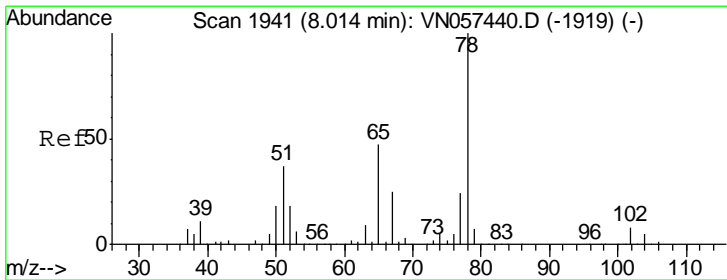
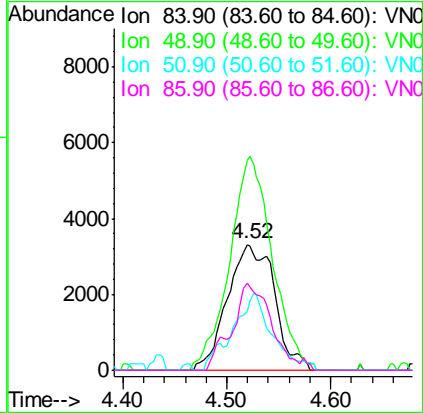
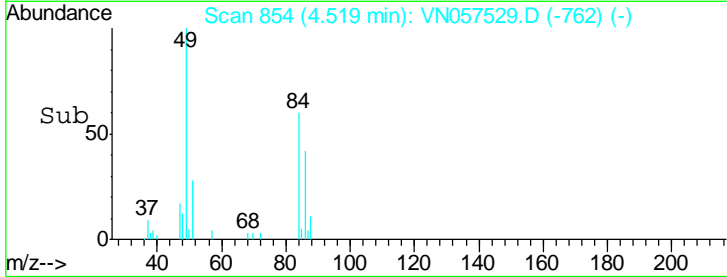


Tgt Ion: 84 Resp: 10427

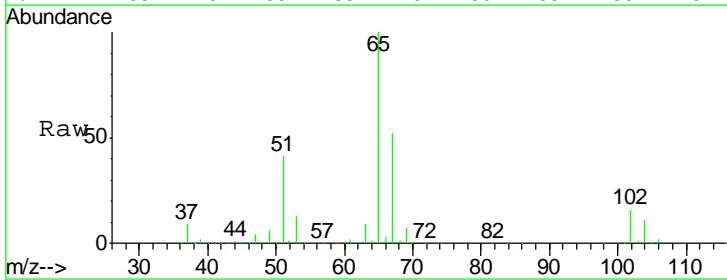
Ion	Ratio	Lower	Upper
84	100		
49	167.5	117.0	175.4
51	47.4	35.5	53.3
86	69.8	49.8	74.8

Manual Integrations
APPROVED

MMDadoda
8/27/2019 5:30:50 PM

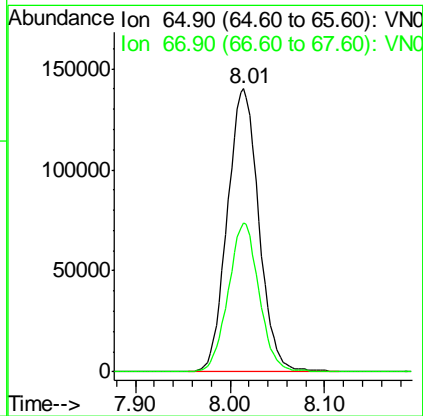
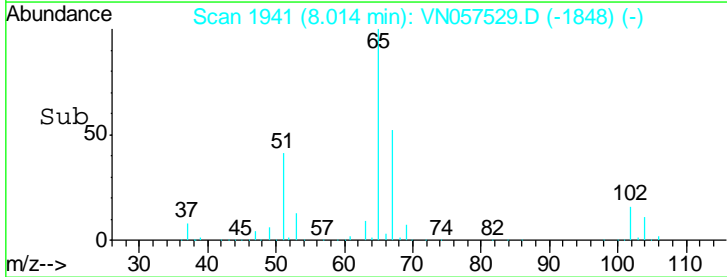


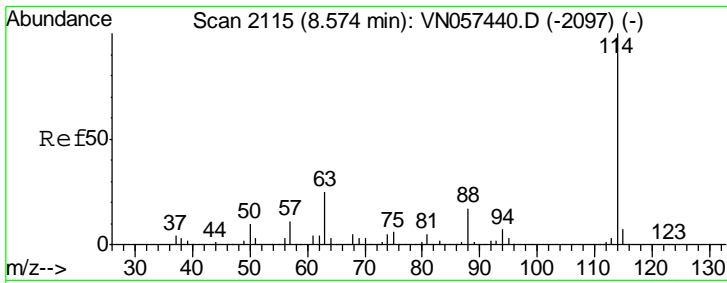
#33
1,2-Dichloroethane-d4
Concen: 48.009 ug/l
RT: 8.01 min Scan# 1941
Delta R.T. -0.00 min
Lab File: VN057529.D
Acq: 26 Aug 2019 23:20



Tgt Ion: 65 Resp: 324292

Ion	Ratio	Lower	Upper
65	100		
67	51.5	0.0	103.8



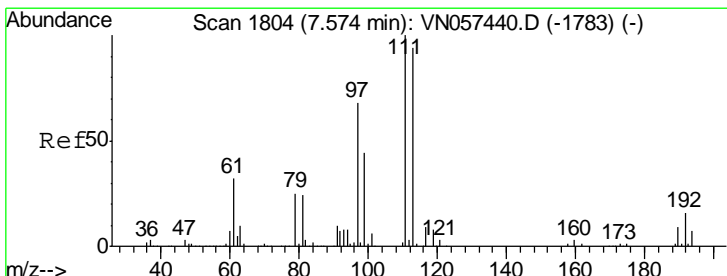
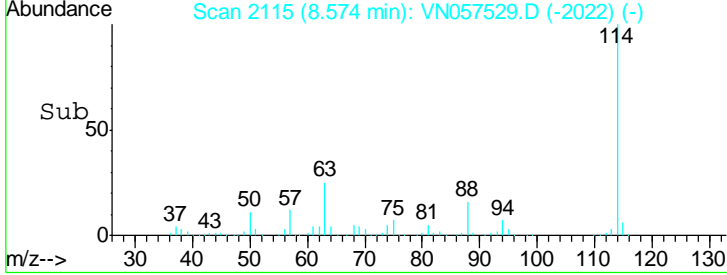
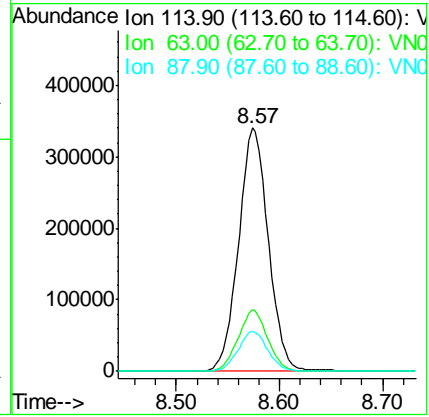
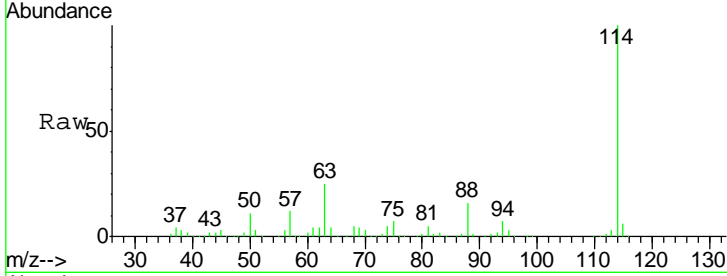


#34
 1,4-Difluorobenzene
 Concen: 50.000 ug/l
 RT: 8.57 min Scan# 2115
 Delta R.T. -0.00 min
 Lab File: VN057529.D
 Acq: 26 Aug 2019 23:20

Instrument :
 MSVOA_N
 ClientSampled :
 T9-12-13-K2-(0)

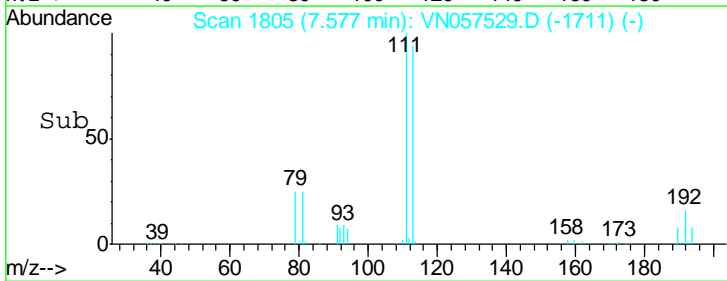
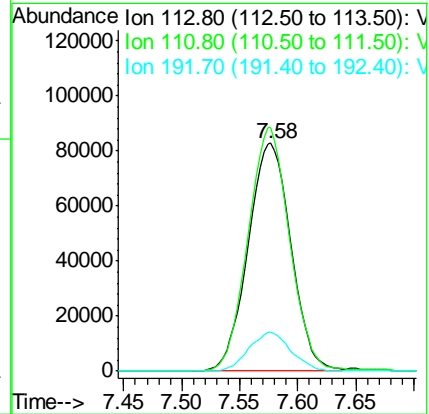
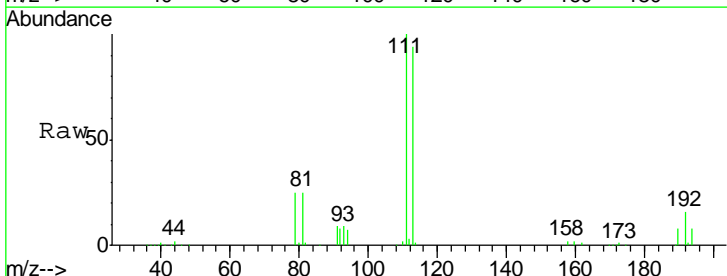
Tgt Ion	Resp	Lower	Upper
114	100		
63	25.3	0.0	50.2
88	16.4	0.0	34.6

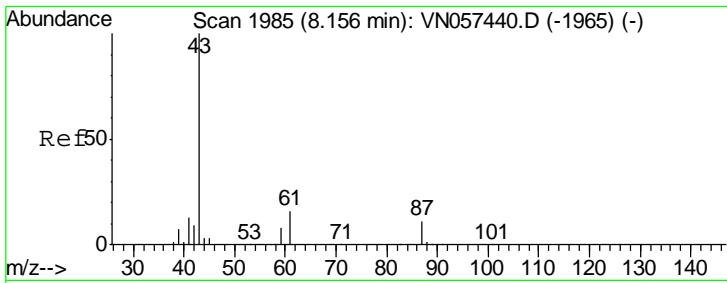
Manual Integrations
APPROVED
 MMDadoda
 8/27/2019 5:30:50 PM



#35
 Dibromofluoromethane
 Concen: 46.080 ug/l
 RT: 7.58 min Scan# 1805
 Delta R.T. 0.00 min
 Lab File: VN057529.D
 Acq: 26 Aug 2019 23:20

Tgt Ion	Resp	Lower	Upper
113	100		
111	104.3	83.8	125.6
192	16.8	13.5	20.3





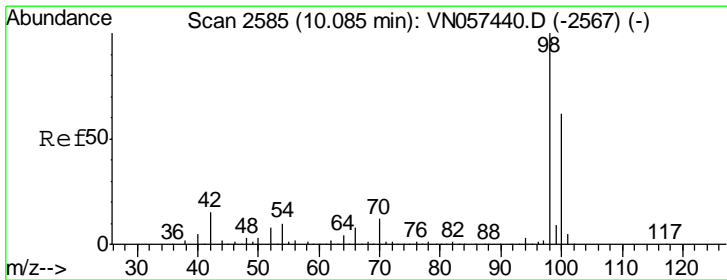
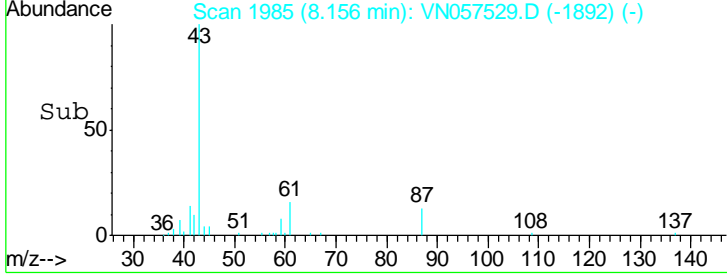
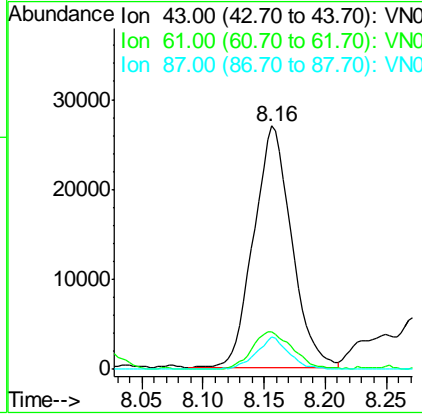
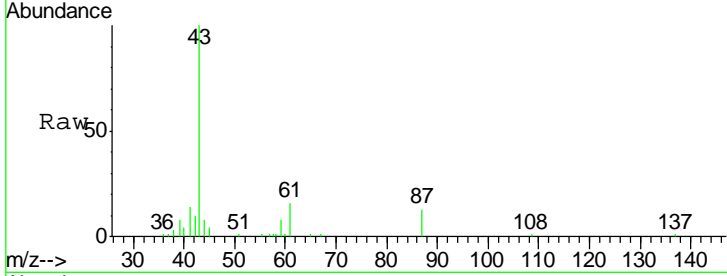
#43
 Isopropyl Acetate
 Concen: 4.565 ug/l
 RT: 8.16 min Scan# 1985
 Delta R.T. -0.00 min
 Lab File: VN057529.D
 Acq: 26 Aug 2019 23:20

Instrument :
 MSVOA_N
ClientSampled :
 T9-12-13-K2-(0)

Tgt Ion	Resp	Lower	Upper
43	100		
61	16.9	14.5	21.7
87	11.5	8.6	12.8

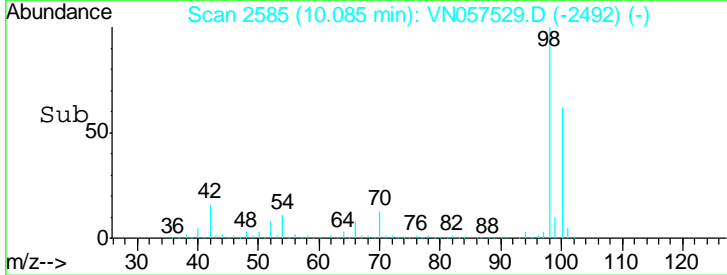
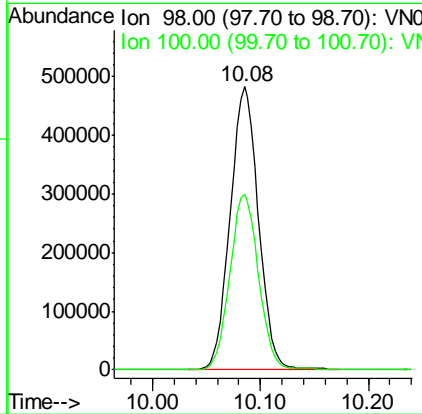
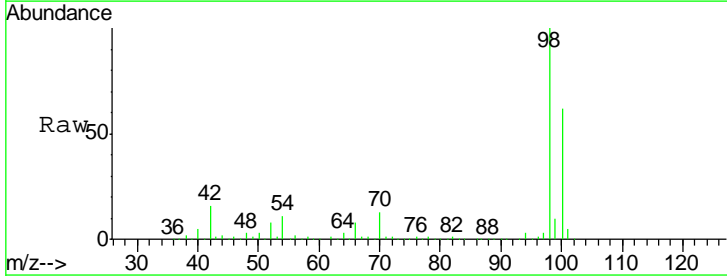
Manual Integrations
APPROVED

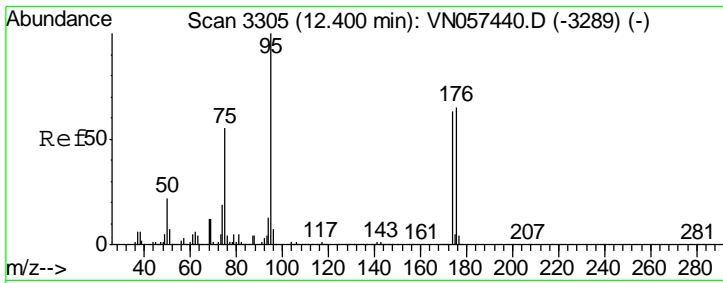
MMDadoda
 8/27/2019 5:30:50 PM



#50
 Toluene-d8
 Concen: 50.906 ug/l
 RT: 10.08 min Scan# 2585
 Delta R.T. -0.00 min
 Lab File: VN057529.D
 Acq: 26 Aug 2019 23:20

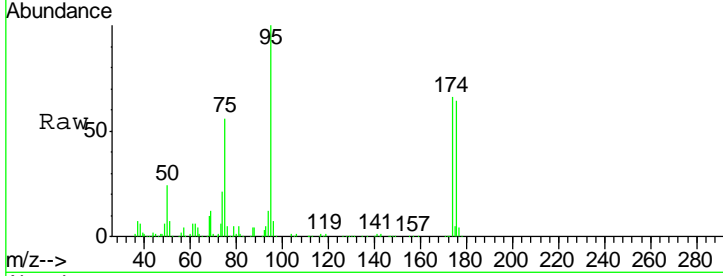
Tgt Ion	Resp	Lower	Upper
98	100		
100	62.4	50.4	75.6





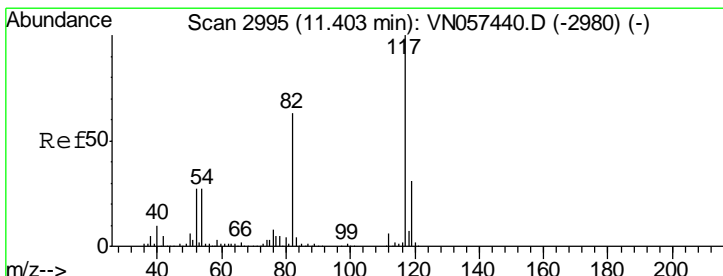
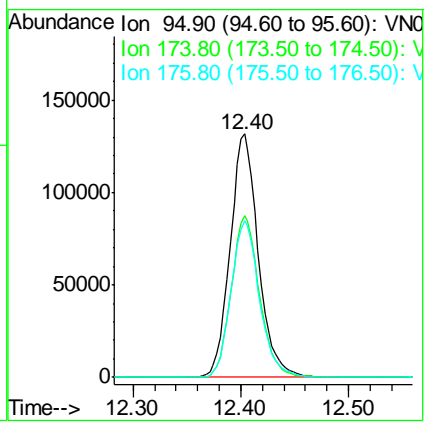
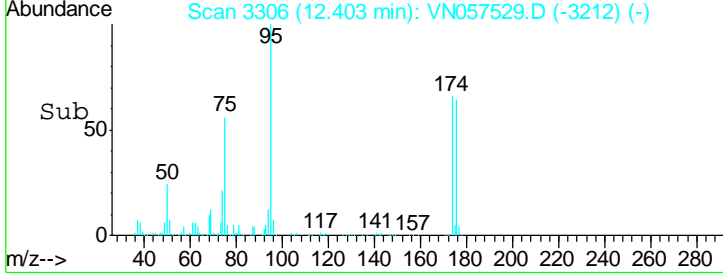
#62
 4-Bromofluorobenzene
 Concen: 40.497 ug/l
 RT: 12.40 min Scan# 3306
 Delta R.T. 0.00 min
 Lab File: VN057529.D
 Acq: 26 Aug 2019 23:20

Instrument :
 MSVOA_N
 ClientSampled :
 T9-12-13-K2-(0)

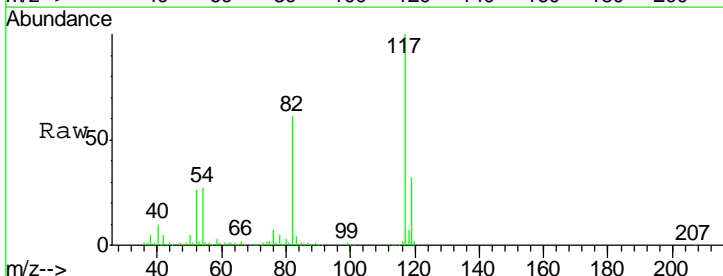


Tgt Ion	Resp	Lower	Upper
95	100		
174	66.5	0.0	133.0
176	64.7	0.0	130.8

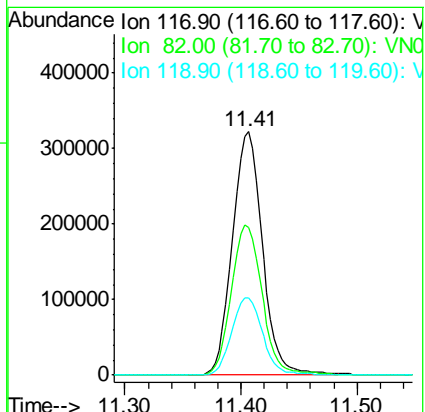
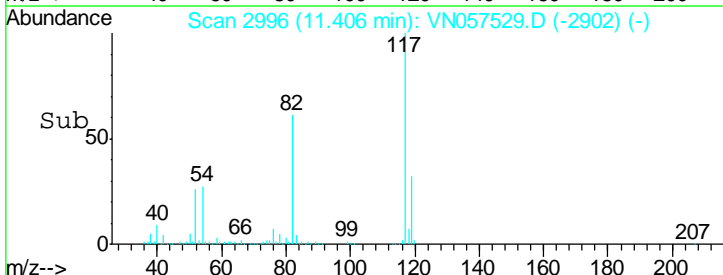
Manual Integrations
APPROVED
 MMDadoda
 8/27/2019 5:30:50 PM

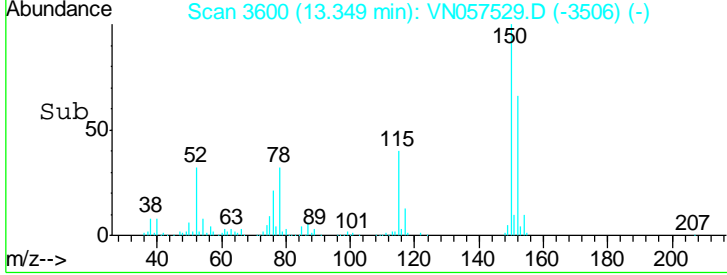
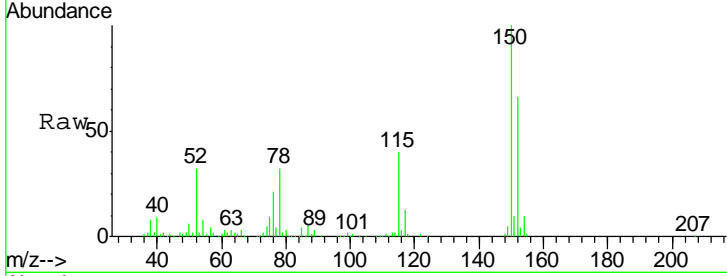
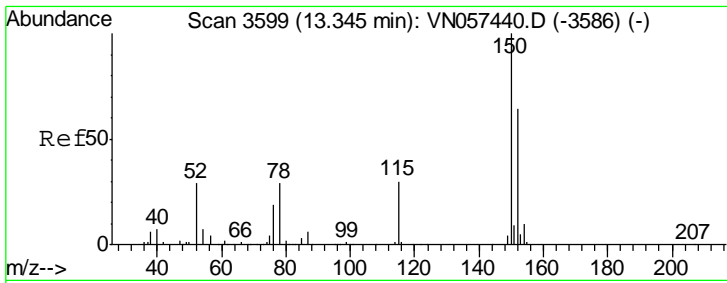


#63
 Chlorobenzene-d5
 Concen: 50.000 ug/l
 RT: 11.41 min Scan# 2996
 Delta R.T. 0.00 min
 Lab File: VN057529.D
 Acq: 26 Aug 2019 23:20



Tgt Ion	Resp	Lower	Upper
117	100		
82	60.8	50.6	75.8
119	31.7	24.6	36.8





#72
 1,4-Dichlorobenzene-d4
 Concen: 50.000 ug/l
 RT: 13.35 min Scan# 3600
 Delta R.T. 0.00 min
 Lab File: VN057529.D
 Acq: 26 Aug 2019 23:20

Tot Ion: 152 Resp: 143178

Ion	Ratio	Lower	Upper
152	100		
115	61.5	32.0	96.0
150	154.5	0.0	346.6

Instrument : MSVOA_N
 ClientSampled : T9-12-13-K2-(0)

Manual Integrations
APPROVED
 MMDadoda
 8/27/2019 5:30:50 PM

