

Data Path : Z:\voasrv\HPCHEM1\MSVOA\_N\Data\VN082624\  
 Data File : VN083484.D  
 Acq On : 26 Aug 2024 15:44  
 Operator : JC\MD  
 Sample : P3716-09  
 Misc : 5.0mL/MSVOA\_N/WATER  
 ALS Vial : 14 Sample Multiplier: 1

Instrument :  
 MSVOA\_N  
 ClientSampleId :  
 1054-TB082024

Integration Parameters: RTEINT.P

Integrator: RTE  
 Smoothing : ON Filtering: 5  
 Sampling : 1 Min Area: 3 % of largest Peak  
 Start Thrs: 0.2 Max Peaks: 100  
 Stop Thrs : 0 Peak Location: TOP

If leading or trailing edge < 100 prefer < Baseline drop else tangent >  
 Peak separation: 5

Method : Z:\voasrv\HPCHEM1\MSVOA\_N\methods\82N080724W.M  
 Title : SW846 8260

Signal : TIC: VN083483.D\data.ms

peak #	R.T. min	first scan	max scan	last scan	PK TY	peak height	corr. area	corr. % max.	% of total
1	2.295	52	58	66	rBV2	22292	38587	4.52%	0.698%
2	2.812	140	146	147	rBV2	6842	9878	1.16%	0.179%
3	2.906	156	162	164	rBV4	7415	16277	1.91%	0.294%
4	2.924	164	165	172	rVB4	16261	16039	1.88%	0.290%
5	4.436	413	422	438	rBV	49600	143437	16.81%	2.595%
6	8.165	1045	1056	1061	rBV	108802	264533	31.01%	4.786%
7	8.224	1061	1066	1082	rVB	179286	384684	45.09%	6.960%
8	8.576	1116	1126	1139	rBV	110478	255665	29.97%	4.626%
9	9.100	1207	1215	1228	rBV	292496	601572	70.51%	10.884%
10	10.565	1456	1464	1480	rBV	400671	750388	87.96%	13.577%
11	11.865	1677	1685	1696	rBV	481668	853149	100.00%	15.436%
12	11.964	1696	1702	1710	rVB	64833	109369	12.82%	1.979%
13	12.070	1712	1720	1731	rBV	258828	508508	59.60%	9.200%
14	12.400	1769	1776	1784	rBV	56769	98264	11.52%	1.778%
15	12.853	1844	1853	1863	rBV	365072	632896	74.18%	11.451%
16	13.794	2005	2013	2025	rBV	497122	843794	98.90%	15.267%

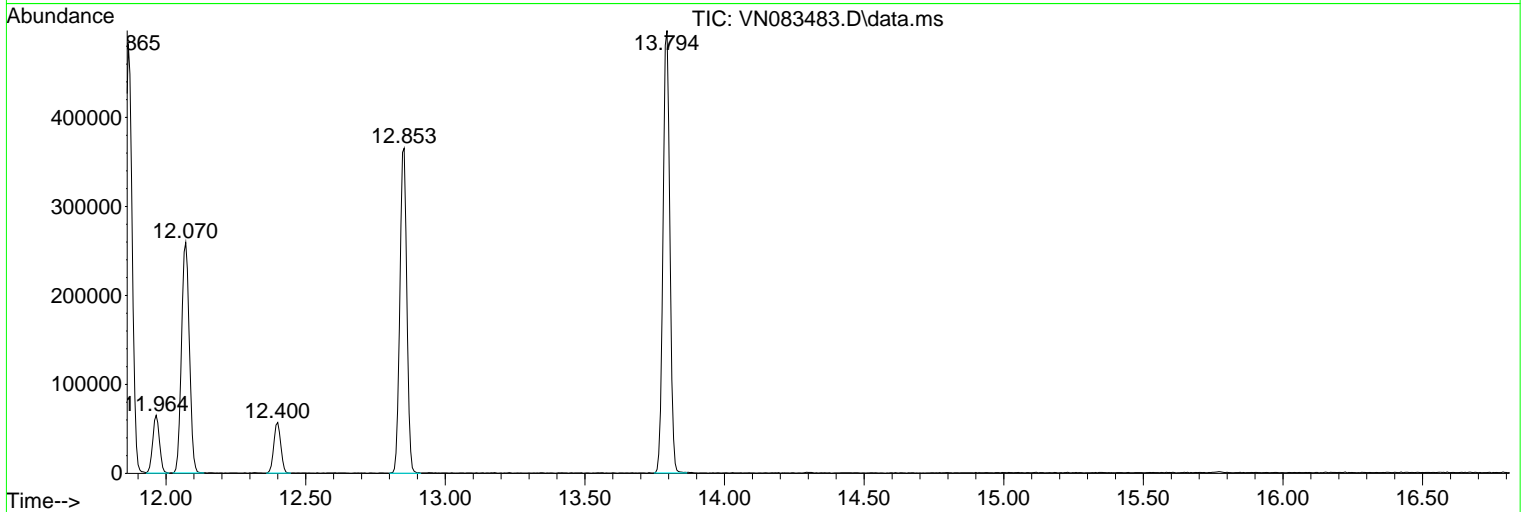
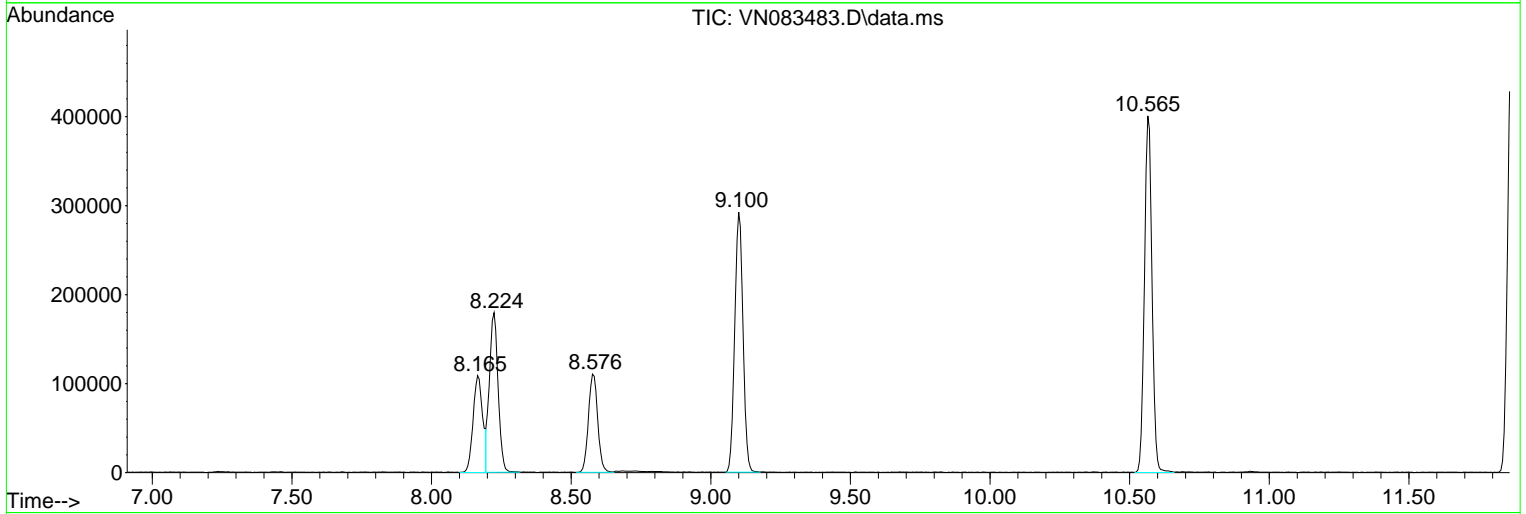
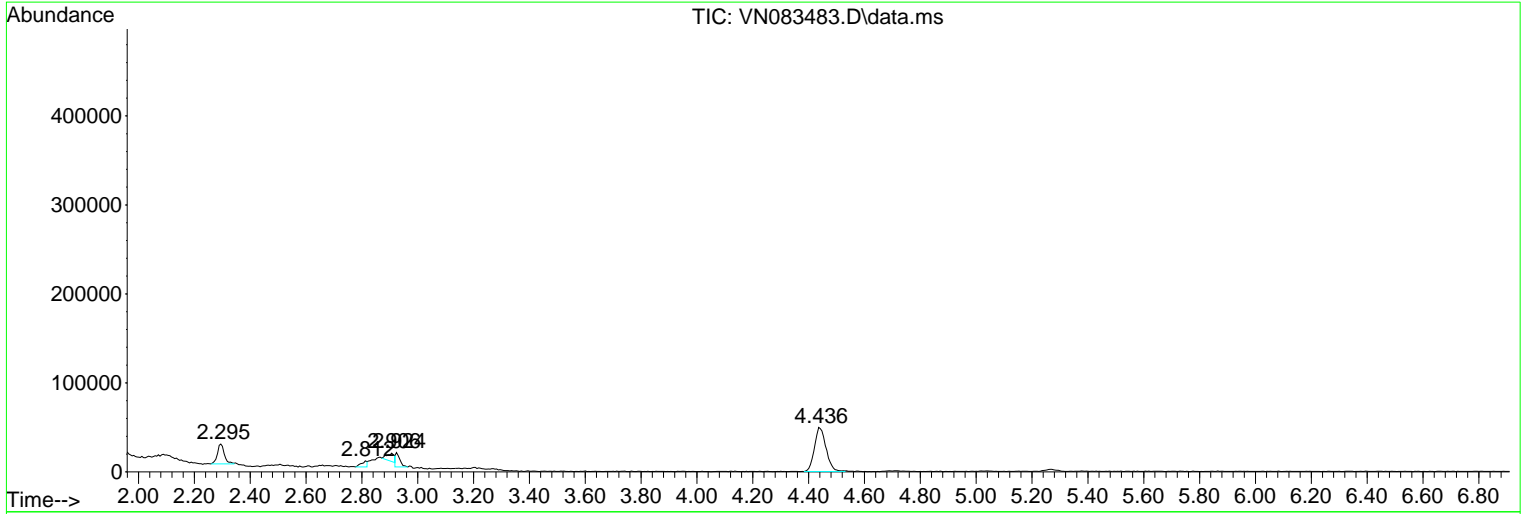
Sum of corrected areas: 5527040

Data Path : Z:\voasrv\HPCHEM1\MSVOA\_N\Data\VN082624\  
 Data File : VN083484.D  
 Acq On : 26 Aug 2024 15:44  
 Operator : JC\MD  
 Sample : P3716-09  
 Misc : 5.0mL/MSVOA\_N/WATER  
 ALS Vial : 14 Sample Multiplier: 1

Instrument :  
 MSVOA\_N  
 ClientSampleId :  
 1054-TB082024

Quant Method : Z:\voasrv\HPCHEM1\MSVOA\_N\methods\82N080724W.M  
 Quant Title : SW846 8260

TIC Library : C:\Database\NIST20.L  
 TIC Integration Parameters: LSCINT.P



Library Search Compound Report

Data Path : Z:\voasrv\HPCHEM1\MSVOA\_N\Data\VN082624\  
Data File : VN083484.D  
Acq On : 26 Aug 2024 15:44  
Operator : JC\MD  
Sample : P3716-09  
Misc : 5.0mL/MSVOA\_N/WATER  
ALS Vial : 14 Sample Multiplier: 1

Instrument :  
MSVOA\_N  
ClientSampleId :  
1054-TB082024

Quant Method : Z:\voasrv\HPCHEM1\MSVOA\_N\methods\82N080724W.M  
Quant Title : SW846 8260

TIC Library : C:\Database\NIST20.L  
TIC Integration Parameters: LSCINT.P

No Library Search Compounds Detected

\*\*\*\*\*

Data Path : Z:\voasrv\HPCHEM1\MSVOA\_N\Data\VN082624\  
Data File : VN083484.D  
Acq On : 26 Aug 2024 15:44  
Operator : JC\MD  
Sample : P3716-09  
Misc : 5.0mL/MSVOA\_N/WATER  
ALS Vial : 14 Sample Multiplier: 1

Instrument :  
MSVOA\_N  
ClientSampleId :  
1054-TB082024

Quant Method : Z:\voasrv\HPCHEM1\MSVOA\_N\methods\82N080724W.M  
Quant Title : SW846 8260

TIC Library : C:\Database\NIST20.L  
TIC Integration Parameters: LSCINT.P

TIC Top Hit name	RT	EstConc	Units	Response	#	RT	Resp	Conc
------------------	----	---------	-------	----------	---	----	------	------

---