

Data Path : Z:\voasrv\HPCHEM1\MSVOA_N\Data\VN082624\
 Data File : VN083486.D
 Acq On : 26 Aug 2024 16:33
 Operator : JC\MD
 Sample : P3706-04
 Misc : 5.0mL/MSVOA_N/WATER
 ALS Vial : 16 Sample Multiplier: 1

Instrument :
 MSVOA_N
 ClientSampleId :
 EB01-082024

Integration Parameters: RTEINT.P
 Integrator: RTE
 Smoothing : ON Filtering: 5
 Sampling : 1 Min Area: 3 % of largest Peak
 Start Thrs: 0.2 Max Peaks: 100
 Stop Thrs : 0 Peak Location: TOP

If leading or trailing edge < 100 prefer < Baseline drop else tangent >
 Peak separation: 5

Method : Z:\voasrv\HPCHEM1\MSVOA_N\methods\82N080724W.M
 Title : SW846 8260

Signal : TIC: VN083485.D\data.ms

peak #	R.T. min	first scan	max scan	last scan	PK TY	peak height	corr. area	corr. % max.	% of total
1	2.295	52	58	74	rVB4	22298	53727	6.29%	1.109%
2	2.483	84	90	94	rBV2	14149	22063	2.58%	0.455%
3	2.806	140	145	146	rBV2	6509	9642	1.13%	0.199%
4	4.442	410	423	441	rBV	60222	177843	20.82%	3.670%
5	8.165	1046	1056	1061	rBV	109924	263110	30.80%	5.430%
6	8.224	1061	1066	1076	rVB	172013	378163	44.26%	7.804%
7	8.577	1115	1126	1139	rBV	117772	255841	29.95%	5.280%
8	9.100	1205	1215	1229	rVB	293562	600265	70.26%	12.387%
9	10.565	1455	1464	1480	rBV	407093	756837	88.59%	15.618%
10	11.865	1676	1685	1698	rBV	485693	854351	100.00%	17.631%
11	12.847	1845	1852	1861	rBV	365006	627184	73.41%	12.943%
12	13.794	2005	2013	2021	rBV	507387	846817	99.12%	17.475%

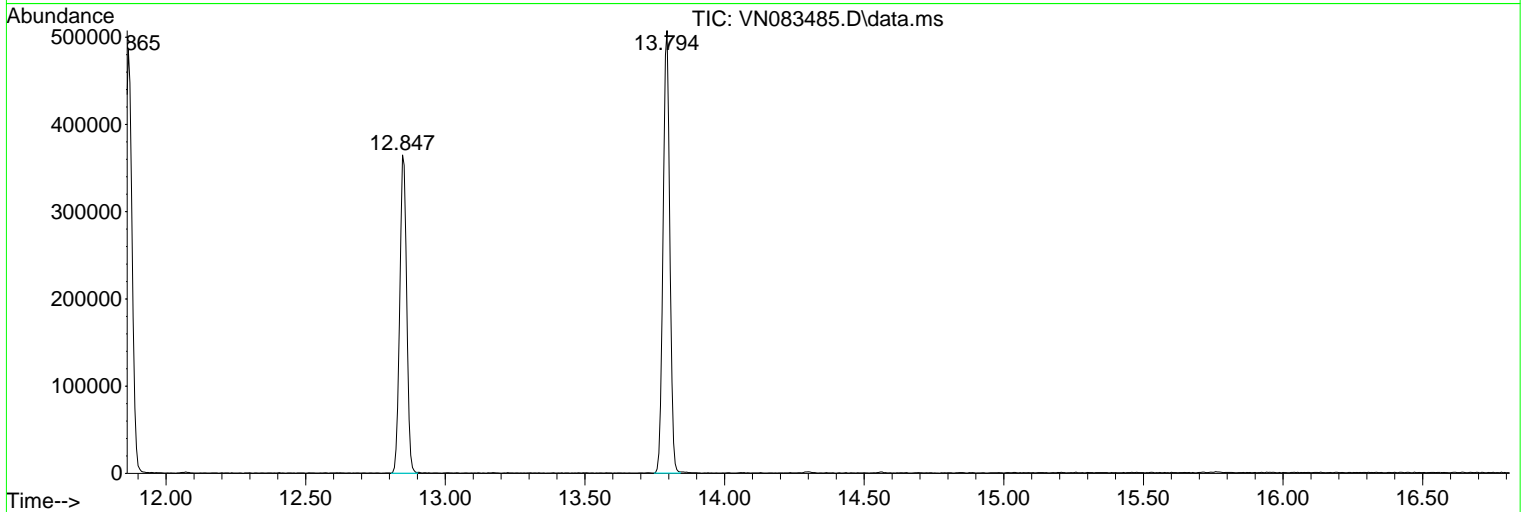
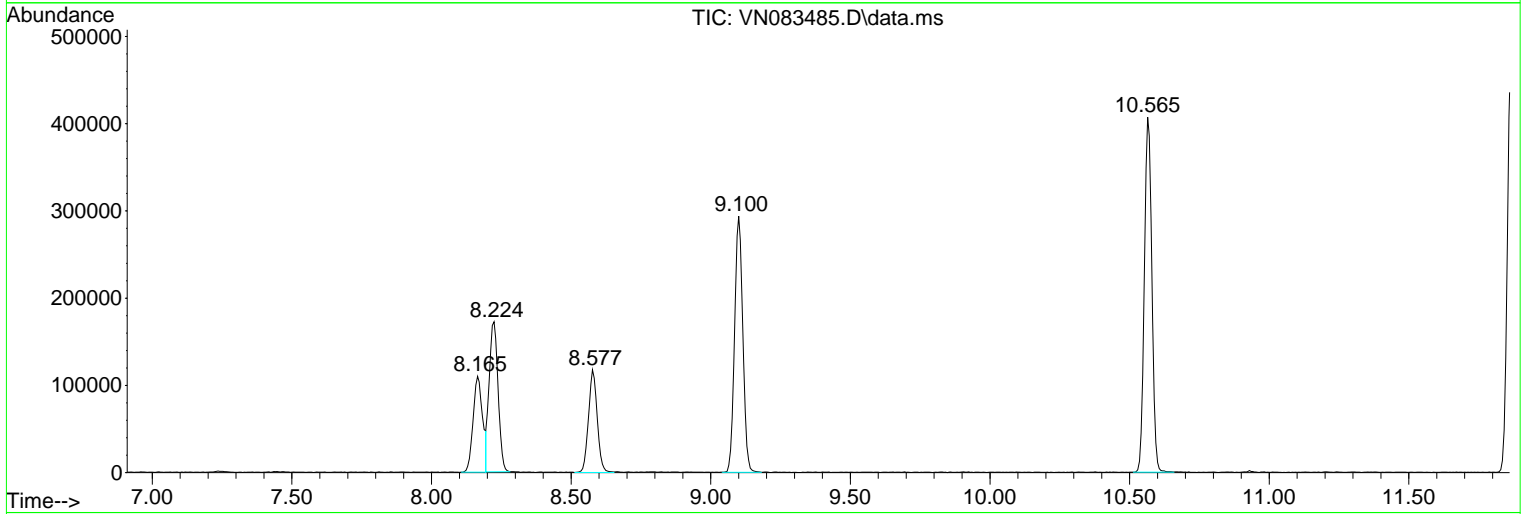
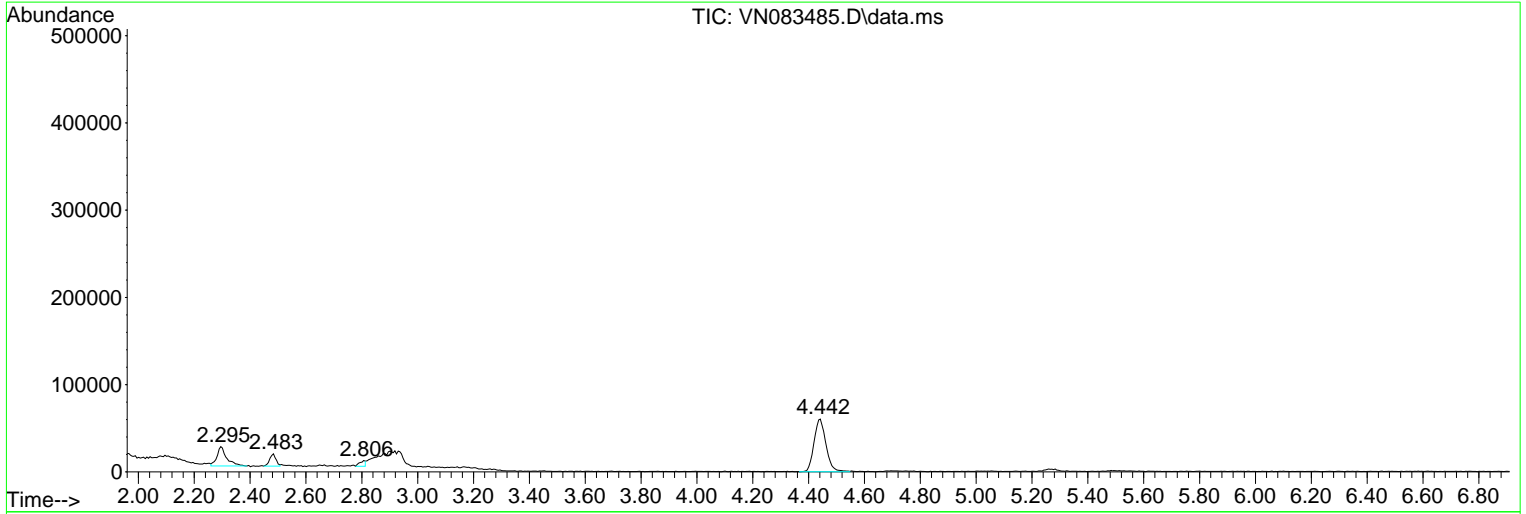
Sum of corrected areas: 4845843

Data Path : Z:\voasrv\HPCHEM1\MSVOA_N\Data\VN082624\
 Data File : VN083486.D
 Acq On : 26 Aug 2024 16:33
 Operator : JC\MD
 Sample : P3706-04
 Misc : 5.0mL/MSVOA_N/WATER
 ALS Vial : 16 Sample Multiplier: 1

Instrument :
 MSVOA_N
 ClientSampleId :
 EB01-082024

Quant Method : Z:\voasrv\HPCHEM1\MSVOA_N\methods\82N080724W.M
 Quant Title : SW846 8260

TIC Library : C:\Database\NIST20.L
 TIC Integration Parameters: LSCINT.P



Data Path : Z:\voasrv\HPCHEM1\MSVOA_N\Data\VN082624\
 Data File : VN083486.D
 Acq On : 26 Aug 2024 16:33
 Operator : JC\MD
 Sample : P3706-04
 Misc : 5.0mL/MSVOA_N/WATER
 ALS Vial : 16 Sample Multiplier: 1

Instrument :
 MSVOA_N
 ClientSampleId :
 EB01-082024

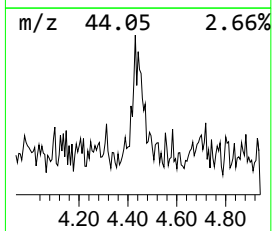
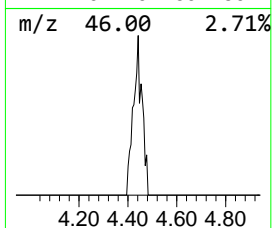
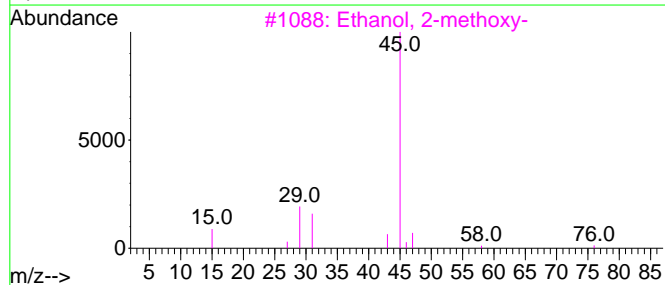
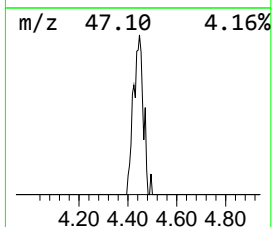
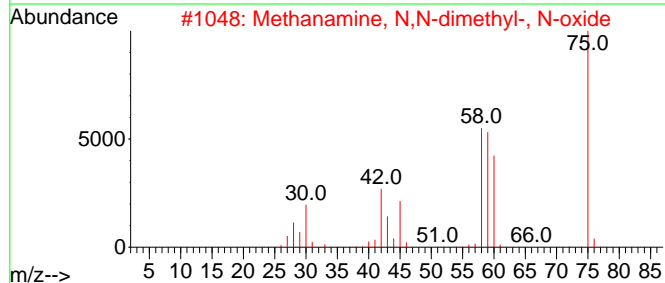
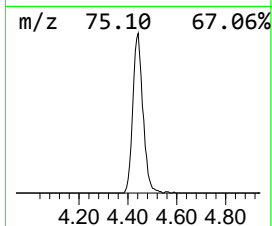
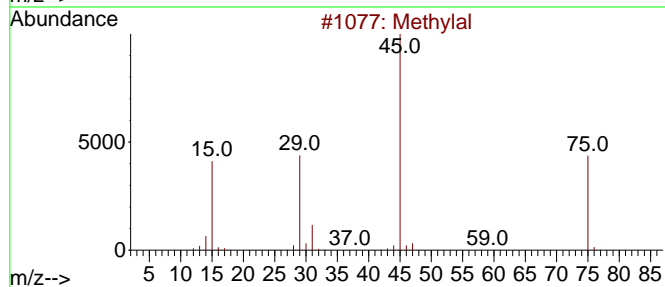
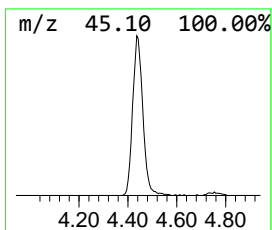
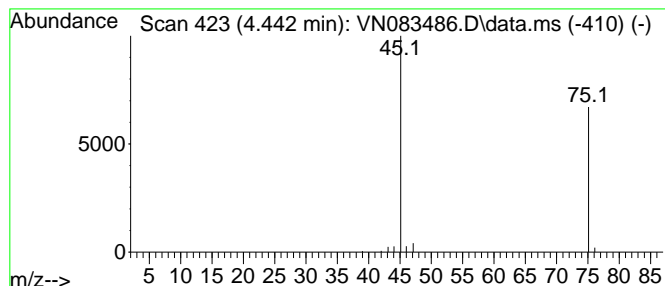
Quant Method : Z:\voasrv\HPCHEM1\MSVOA_N\methods\82N080724W.M
 Quant Title : SW846 8260

TIC Library : C:\Database\NIST20.L
 TIC Integration Parameters: LSCINT.P

 Peak Number 2 Methylal Concentration Rank 1

R.T.	EstConc	Area	Relative to ISTD	R.T.
4.442	23.51 ug/l	177843	Pentafluorobenzene	8.224

Hit#	of	Tentative ID	MW	MolForm	CAS#	Qual
1	5	Methylal	76	C3H8O2	000109-87-5	83
2		Methanamine, N,N-dimethyl-, N-oxide	75	C3H9NO	001184-78-7	5
3		Ethanol, 2-methoxy-	76	C3H8O2	000109-86-4	5
4		Propylene Glycol	76	C3H8O2	000057-55-6	5
5		Formamide	45	CH3NO	000075-12-7	4



Data Path : Z:\voasrv\HPCHEM1\MSVOA_N\Data\VN082624\
Data File : VN083486.D
Acq On : 26 Aug 2024 16:33
Operator : JC\MD
Sample : P3706-04
Misc : 5.0mL/MSVOA_N/WATER
ALS Vial : 16 Sample Multiplier: 1

Instrument :
MSVOA_N
ClientSampleId :
EB01-082024

Quant Method : Z:\voasrv\HPCHEM1\MSVOA_N\methods\82N080724W.M
Quant Title : SW846 8260

TIC Library : C:\Database\NIST20.L
TIC Integration Parameters: LSCINT.P

TIC Top Hit name	RT	EstConc	Units	Response	--Internal Standard--			
					#	RT	Resp	Conc
Methylal	4.442	23.5	ug/l	177843	1	8.224	378163	50.0