

Data Path : Z:\voasrv\HPCHEM1\MSVOA\_N\Data\VN083024\  
 Data File : VN083606.D  
 Acq On : 31 Aug 2024 09:45  
 Operator : JC\MD  
 Sample : P3769-11  
 Misc : 5.0mL/MSVOA\_N/WATER  
 ALS Vial : 51 Sample Multiplier: 1

Instrument :  
 MSVOA\_N  
 ClientSampleId :

Quant Time: Sep 02 01:02:46 2024  
 Quant Method : Z:\voasrv\HPCHEM1\MSVOA\_N\methods\82N083024W.M  
 Quant Title : SW846 8260  
 QLast Update : Sat Aug 31 00:48:10 2024  
 Response via : Initial Calibration

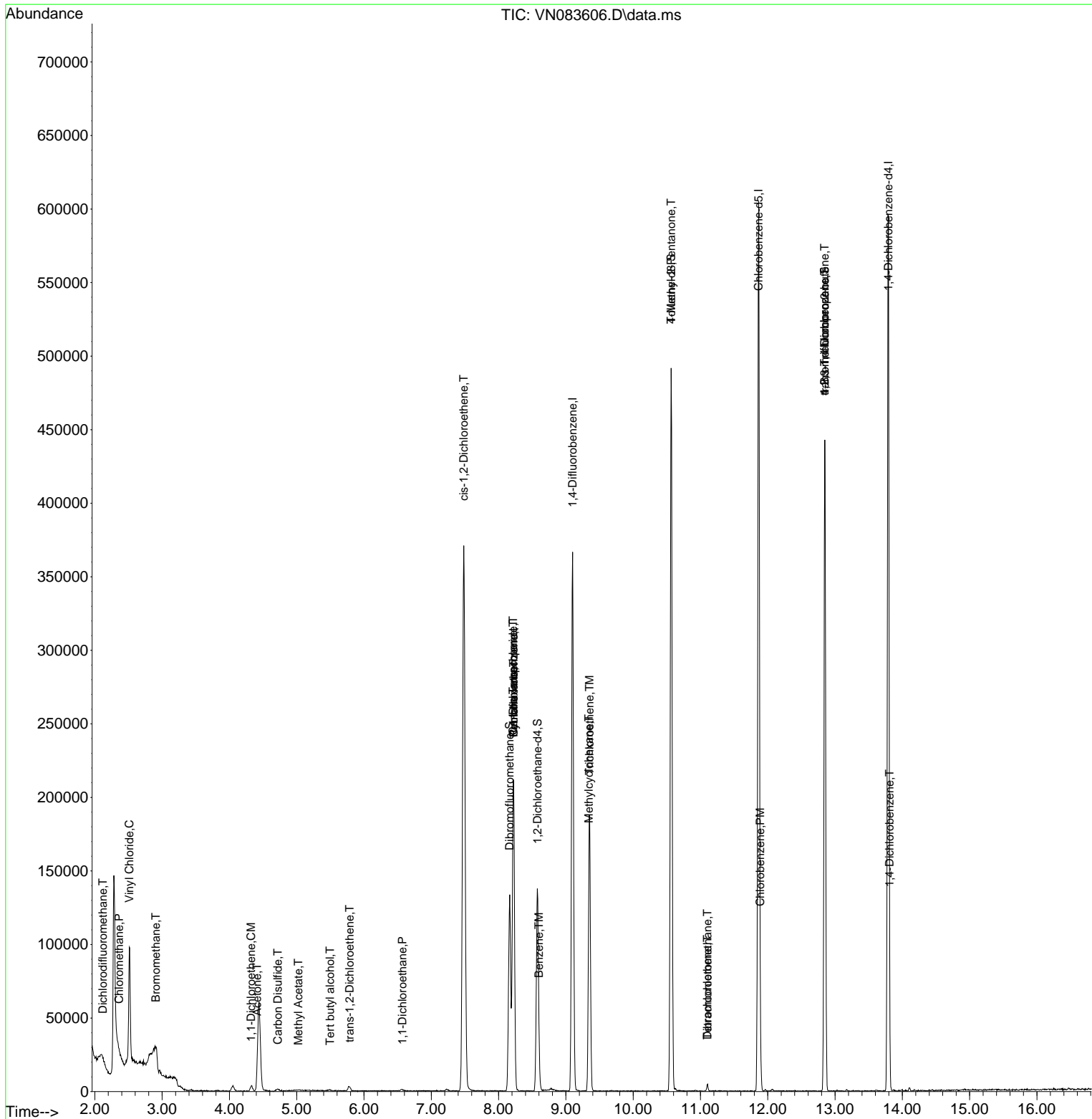
Compound	R.T.	QIon	Response	Conc	Units	Dev(Min)
-----						
Internal Standards						
1) Pentafluorobenzene	8.224	168	149411	50.000	ug/l	0.00
34) 1,4-Difluorobenzene	9.100	114	304157	50.000	ug/l	0.00
63) Chlorobenzene-d5	11.865	117	323503	50.000	ug/l	0.00
72) 1,4-Dichlorobenzene-d4	13.794	152	153064	50.000	ug/l	0.00
System Monitoring Compounds						
33) 1,2-Dichloroethane-d4	8.577	65	115869	55.489	ug/l	0.00
Spiked Amount	50.000	Range 74 - 125	Recovery	=	110.980%	
35) Dibromofluoromethane	8.165	113	93801	51.239	ug/l	0.00
Spiked Amount	50.000	Range 75 - 124	Recovery	=	102.480%	
50) Toluene-d8	10.565	98	334580	46.951	ug/l	0.00
Spiked Amount	50.000	Range 86 - 113	Recovery	=	93.900%	
62) 4-Bromofluorobenzene	12.847	95	156436	59.237	ug/l	0.00
Spiked Amount	50.000	Range 77 - 121	Recovery	=	118.480%	
Target Compounds						
						Qvalue
2) Dichlorodifluoromethane	2.118	85	354	0.224	ug/l #	43
3) Chloromethane	2.359	50	1127	0.612	ug/l #	41
4) Vinyl Chloride	2.512	62	72107	39.114	ug/l	93
5) Bromomethane	2.906	94	281	0.290	ug/l #	59
11) Tert butyl alcohol	5.495	59	174	0.534	ug/l #	71
12) 1,1-Dichloroethene	4.324	96	2172	1.327	ug/l #	61
16) Acetone	4.412	43	726	0.872	ug/l #	45
17) Carbon Disulfide	4.718	76	2361	0.495	ug/l #	75
18) Methyl Acetate	5.024	43	845	0.382	ug/l #	52
21) trans-1,2-Dichloroethene	5.789	96	1921	1.127	ug/l	92
24) 1,1-Dichloroethane	6.571	63	1974	0.602	ug/l #	82
27) cis-1,2-Dichloroethene	7.483	96	220274	108.268	ug/l	89
31) Cyclohexane	8.224	56	3755	1.162	ug/l #	7
36) 1,1-Dichloropropene	8.218	75	13477	4.826	ug/l #	51
38) Carbon Tetrachloride	8.218	117	16861	5.292	ug/l #	16
39) Methylcyclohexane	9.341	83	708	0.211	ug/l #	6
40) Benzene	8.600	78	7087	0.825	ug/l	92
43) Isopropyl Acetate	8.706	43	649	Below Cal	#	57
44) Trichloroethene	9.353	130	63718	30.836	ug/l	90
51) 4-Methyl-2-Pentanone	10.565	43	1661	0.643	ug/l #	1
60) Dibromochloromethane	11.106	129	1105	0.497	ug/l #	10
64) Tetrachloroethene	11.106	164	886	0.417	ug/l #	83
65) Chlorobenzene	11.888	112	10594	1.460	ug/l	93
76) 1,2,3-Trichloropropane	12.847	75	85913	27.801	ug/l #	1
81) trans-1,4-Dichloro-2-b...	12.847	75	85913	65.570	ug/l #	9
88) 1,4-Dichlorobenzene	13.812	146	3293	0.568	ug/l #	72

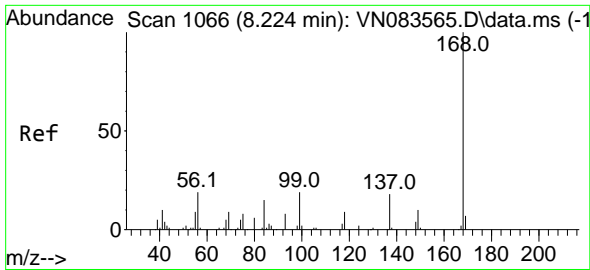
(#) = qualifier out of range (m) = manual integration (+) = signals summed

Data Path : Z:\voasrv\HPCHEM1\MSVOA\_N\Data\VN083024\  
 Data File : VN083606.D  
 Acq On : 31 Aug 2024 09:45  
 Operator : JC\MD  
 Sample : P3769-11  
 Misc : 5.0mL/MSVOA\_N/WATER  
 ALS Vial : 51 Sample Multiplier: 1

Instrument :  
 MSVOA\_N  
 ClientSampleId :

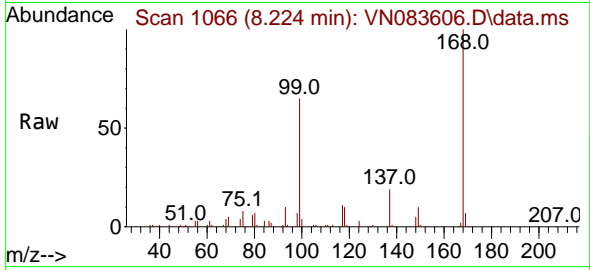
Quant Time: Sep 02 01:02:46 2024  
 Quant Method : Z:\voasrv\HPCHEM1\MSVOA\_N\methods\82N083024W.M  
 Quant Title : SW846 8260  
 QLast Update : Sat Aug 31 00:48:10 2024  
 Response via : Initial Calibration



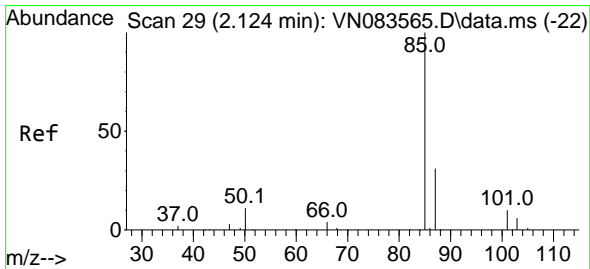
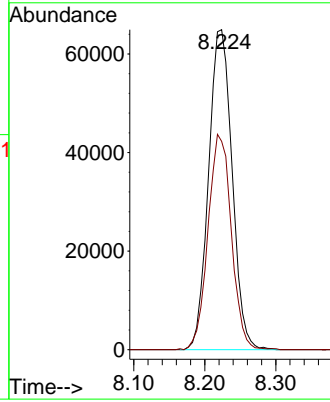
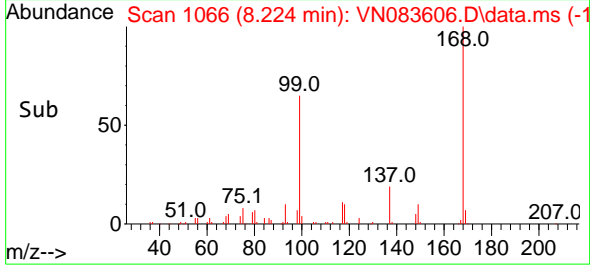


#1  
 Pentafluorobenzene  
 Concen: 50.000 ug/l  
 RT: 8.224 min Scan# 1066  
 Delta R.T. -0.000 min  
 Lab File: VN083606.D  
 Acq: 31 Aug 2024 09:45

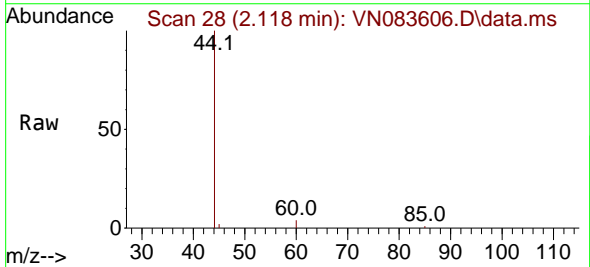
Instrument :  
 MSVOA\_N  
 ClientSampleId :



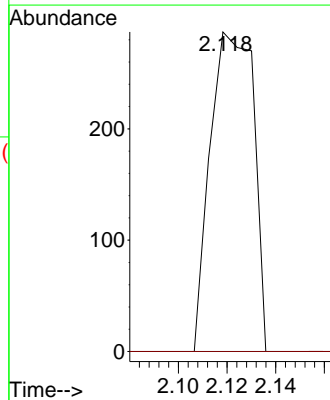
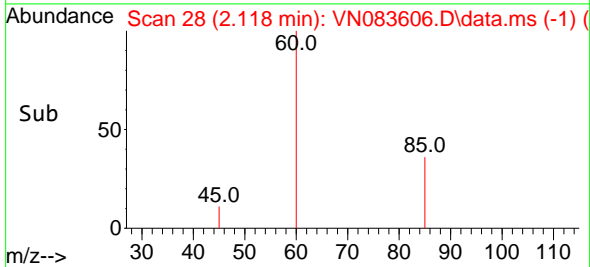
Tgt Ion:168 Resp: 149411  
 Ion Ratio Lower Upper  
 168 100  
 99 65.1 54.2 81.2

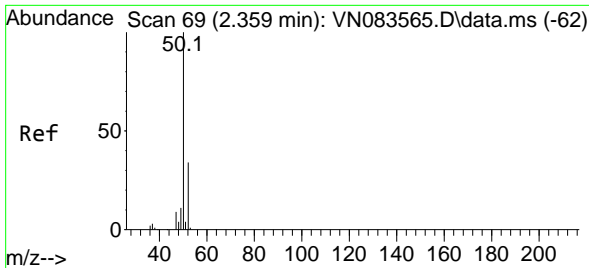


#2  
 Dichlorodifluoromethane  
 Concen: 0.224 ug/l  
 RT: 2.118 min Scan# 28  
 Delta R.T. -0.006 min  
 Lab File: VN083606.D  
 Acq: 31 Aug 2024 09:45



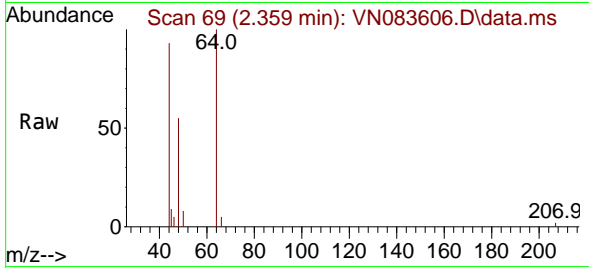
Tgt Ion: 85 Resp: 354  
 Ion Ratio Lower Upper  
 85 100  
 87 0.0 15.7 47.0#



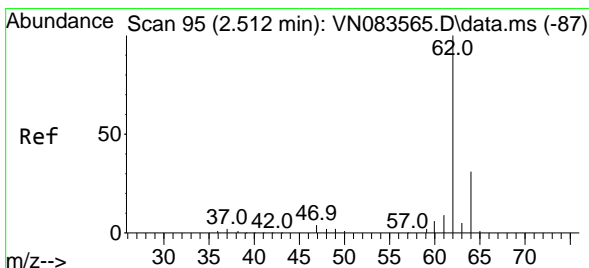
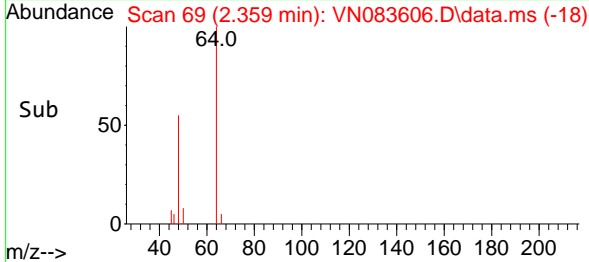
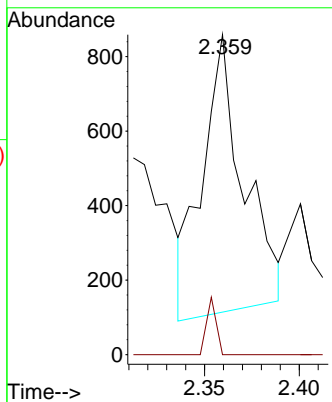


#3  
 Chloromethane  
 Concen: 0.612 ug/l  
 RT: 2.359 min Scan# 69  
 Delta R.T. 0.000 min  
 Lab File: VN083606.D  
 Acq: 31 Aug 2024 09:45

Instrument :  
 MSVOA\_N  
 ClientSampleId :

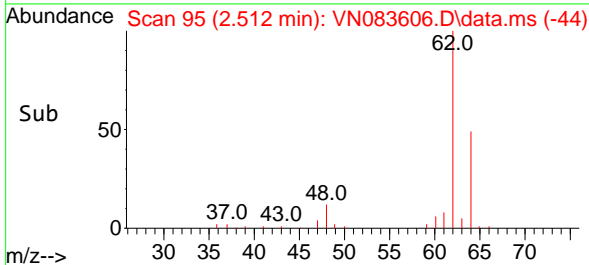
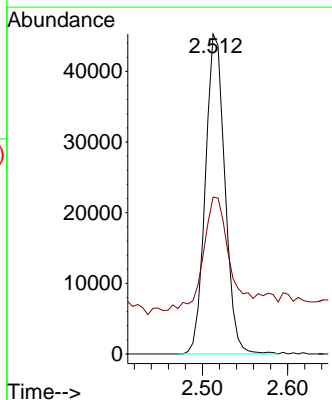
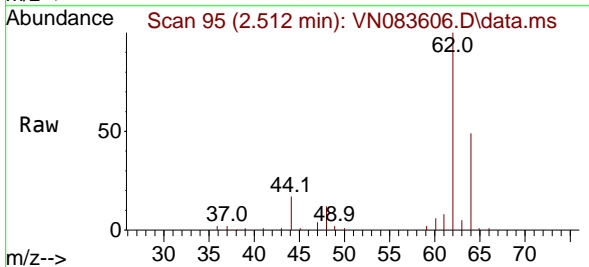


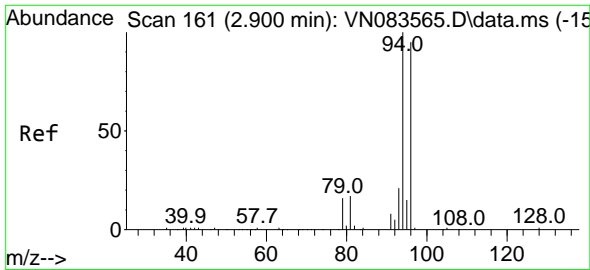
Tgt Ion: 50 Resp: 1127  
 Ion Ratio Lower Upper  
 50 100  
 52 0.0 27.2 40.8#



#4  
 Vinyl Chloride  
 Concen: 39.114 ug/l  
 RT: 2.512 min Scan# 95  
 Delta R.T. 0.000 min  
 Lab File: VN083606.D  
 Acq: 31 Aug 2024 09:45

Tgt Ion: 62 Resp: 72107  
 Ion Ratio Lower Upper  
 62 100  
 64 34.8 24.7 37.1

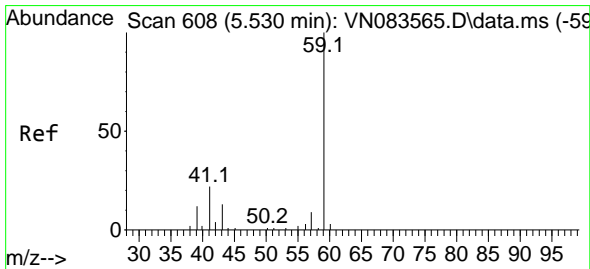
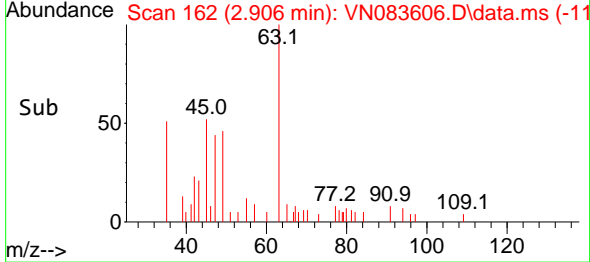
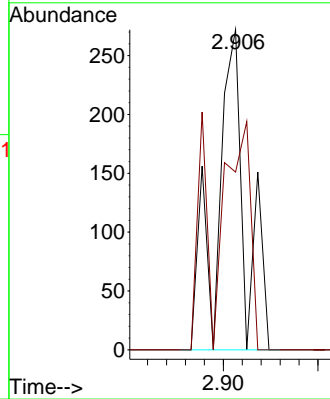
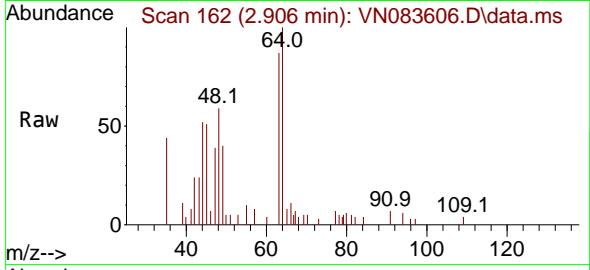




#5  
 Bromomethane  
 Concen: 0.290 ug/l  
 RT: 2.906 min Scan# 11  
 Delta R.T. 0.006 min  
 Lab File: VN083606.D  
 Acq: 31 Aug 2024 09:45

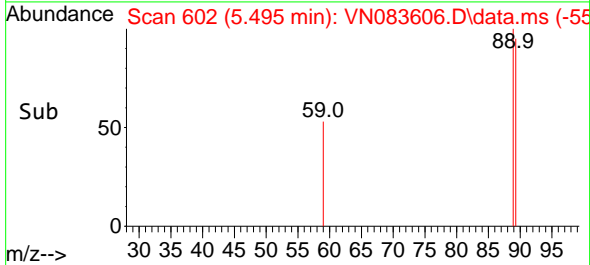
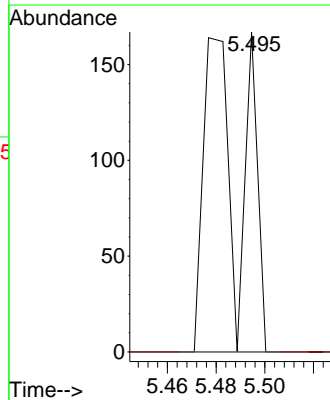
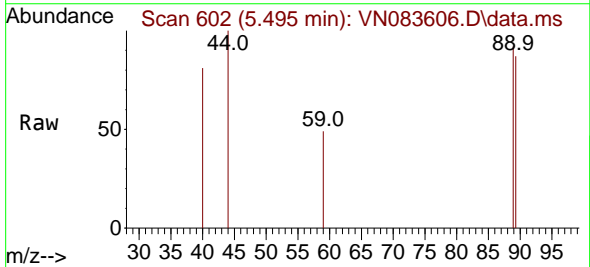
Instrument :  
 MSVOA\_N  
 ClientSampleId :

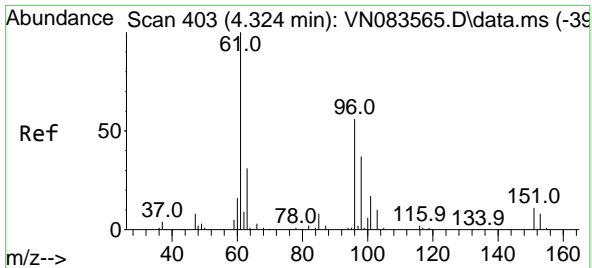
Tgt Ion: 94 Resp: 281  
 Ion Ratio Lower Upper  
 94 100  
 96 55.5 76.0 114.0#



#11  
 Tert butyl alcohol  
 Concen: 0.534 ug/l  
 RT: 5.495 min Scan# 602  
 Delta R.T. -0.035 min  
 Lab File: VN083606.D  
 Acq: 31 Aug 2024 09:45

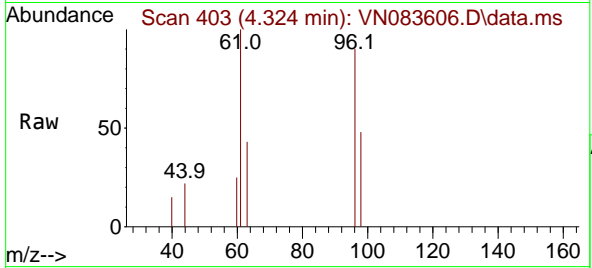
Tgt Ion: 59 Resp: 174  
 Ion Ratio Lower Upper  
 59 100  
 57 0.0 8.7 13.1#



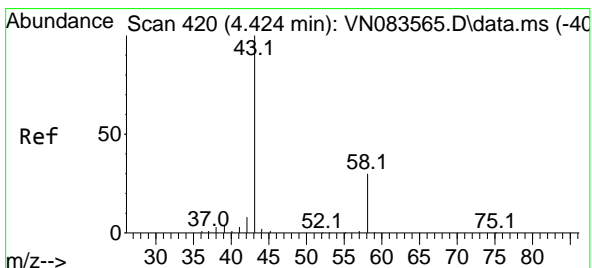
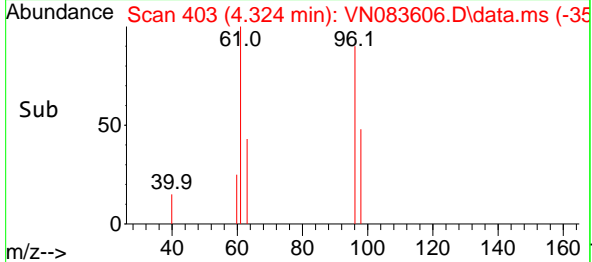
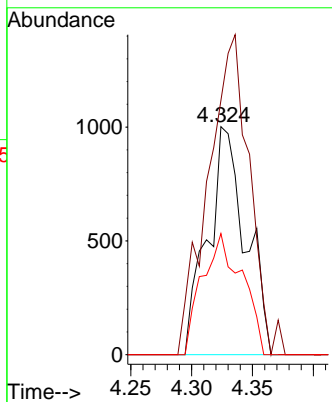


#12  
 1,1-Dichloroethene  
 Concen: 1.327 ug/l  
 RT: 4.324 min Scan# 403  
 Delta R.T. 0.000 min  
 Lab File: VN083606.D  
 Acq: 31 Aug 2024 09:45

Instrument :  
 MSVOA\_N  
 ClientSampleId :

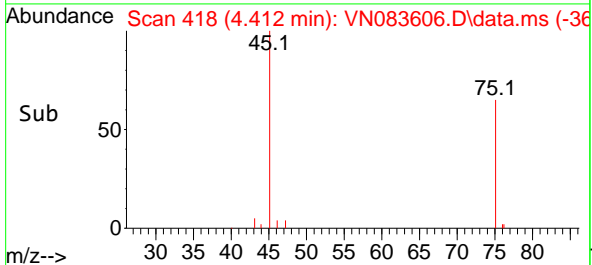
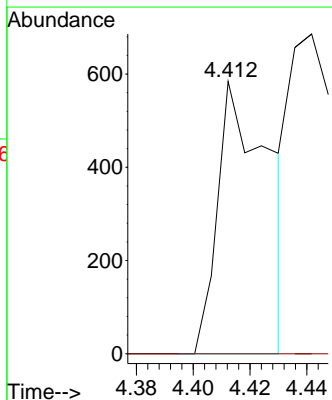
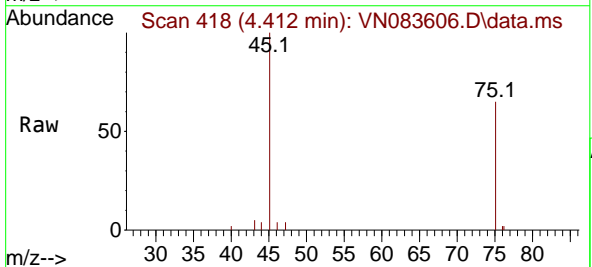


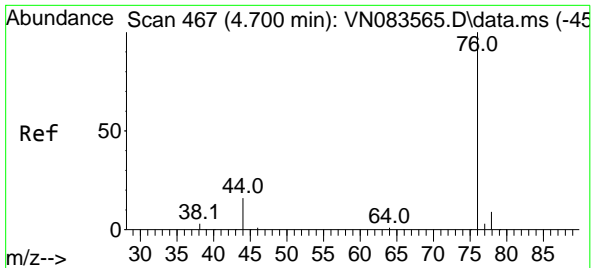
Tgt Ion	Resp	Lower	Upper
96	2172		
96	100		
61	111.5	143.4	215.0#
98	53.1	52.7	79.1



#16  
 Acetone  
 Concen: 0.872 ug/l  
 RT: 4.412 min Scan# 418  
 Delta R.T. -0.012 min  
 Lab File: VN083606.D  
 Acq: 31 Aug 2024 09:45

Tgt Ion	Resp	Lower	Upper
43	726		
43	100		
58	0.0	23.7	35.5#

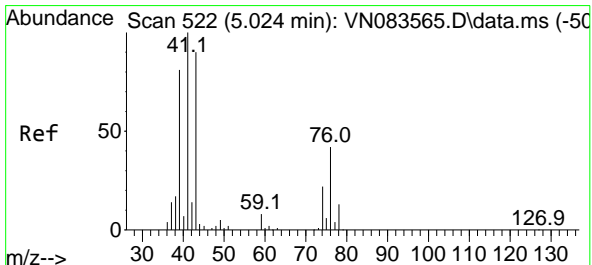
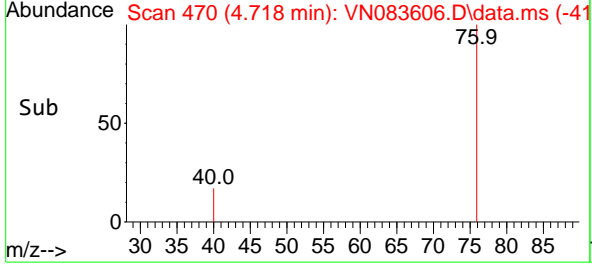
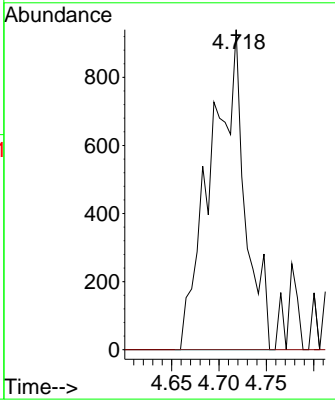
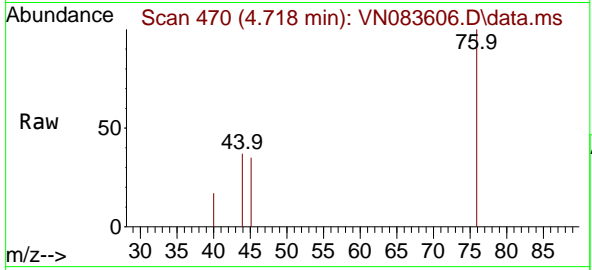




#17  
 Carbon Disulfide  
 Concen: 0.495 ug/l  
 RT: 4.718 min Scan# 41  
 Delta R.T. 0.018 min  
 Lab File: VN083606.D  
 Acq: 31 Aug 2024 09:45

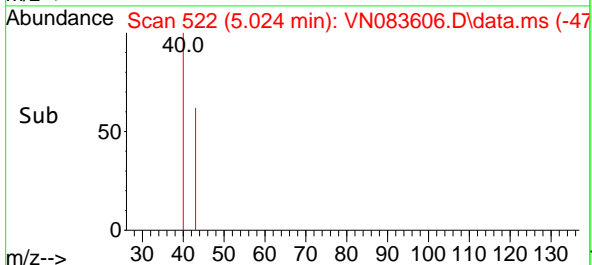
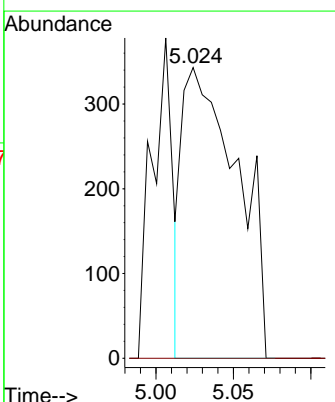
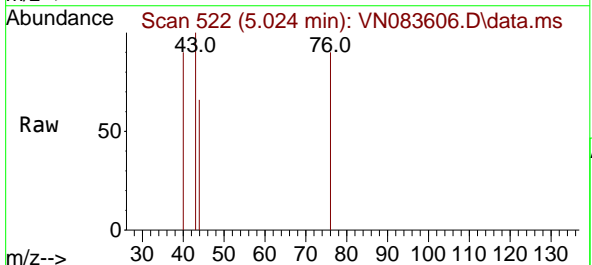
Instrument : MSVOA\_N  
 ClientSampleId :

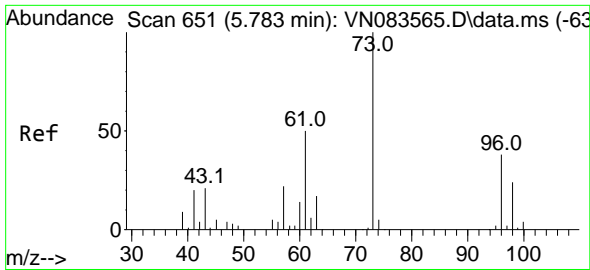
Tgt Ion: 76 Resp: 2361  
 Ion Ratio Lower Upper  
 76 100  
 78 0.0 7.1 10.7#



#18  
 Methyl Acetate  
 Concen: 0.382 ug/l  
 RT: 5.024 min Scan# 522  
 Delta R.T. 0.000 min  
 Lab File: VN083606.D  
 Acq: 31 Aug 2024 09:45

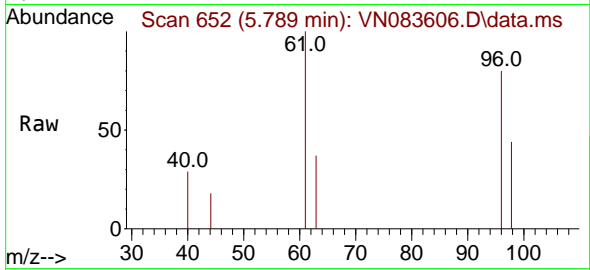
Tgt Ion: 43 Resp: 845  
 Ion Ratio Lower Upper  
 43 100  
 74 0.0 19.0 28.4#



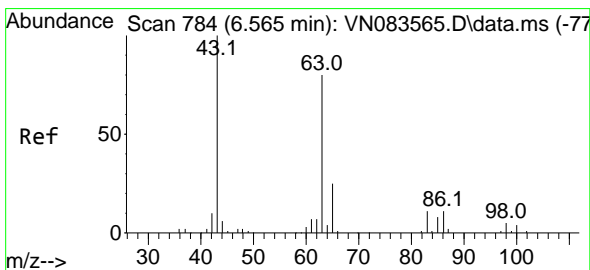
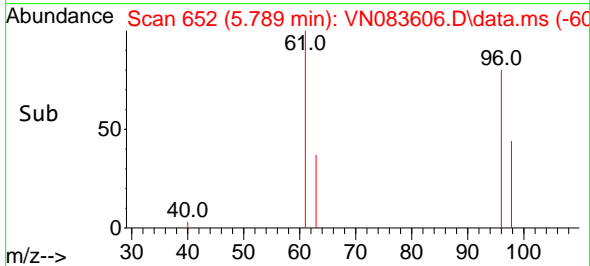
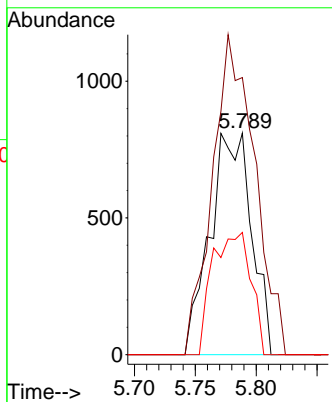


#21  
 trans-1,2-Dichloroethene  
 Concen: 1.127 ug/l  
 RT: 5.789 min Scan# 61  
 Delta R.T. 0.006 min  
 Lab File: VN083606.D  
 Acq: 31 Aug 2024 09:45

Instrument :  
 MSVOA\_N  
 ClientSampleId :

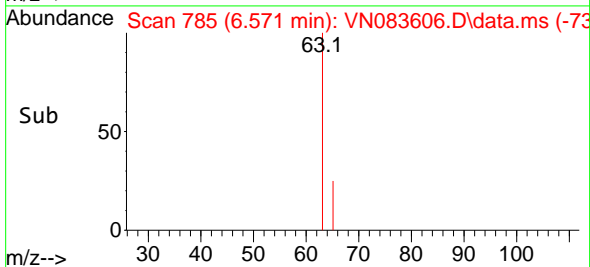
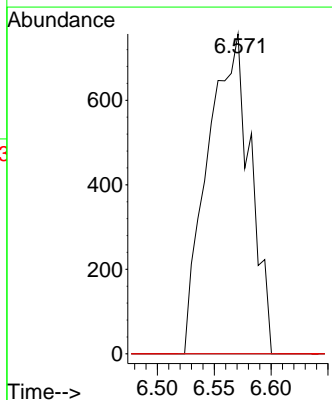
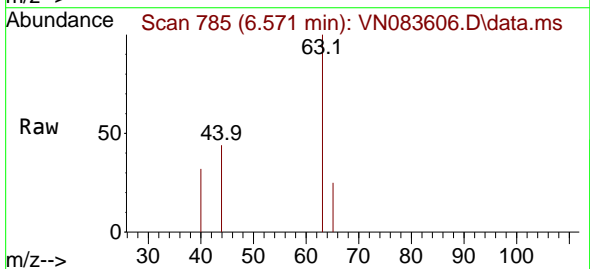


Tgt Ion: 96 Resp: 1921  
 Ion Ratio Lower Upper  
 96 100  
 61 125.1 106.0 159.0  
 98 55.2 52.2 78.2

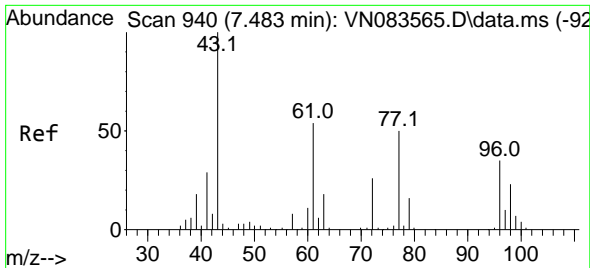


#24  
 1,1-Dichloroethane  
 Concen: 0.602 ug/l  
 RT: 6.571 min Scan# 785  
 Delta R.T. 0.006 min  
 Lab File: VN083606.D  
 Acq: 31 Aug 2024 09:45

Tgt Ion: 63 Resp: 1974  
 Ion Ratio Lower Upper  
 63 100  
 98 0.0 3.5 10.4#  
 100 0.0 2.5 7.5#

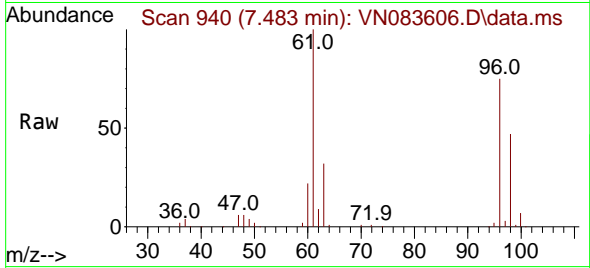






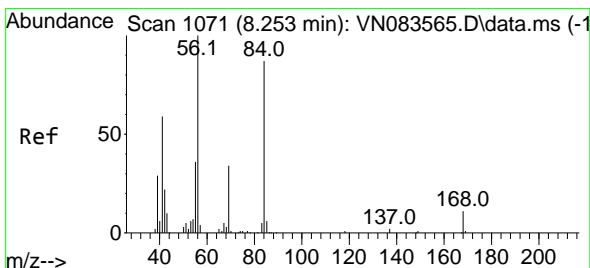
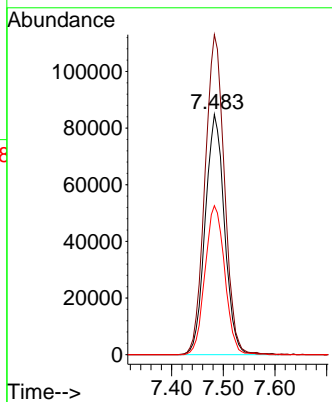
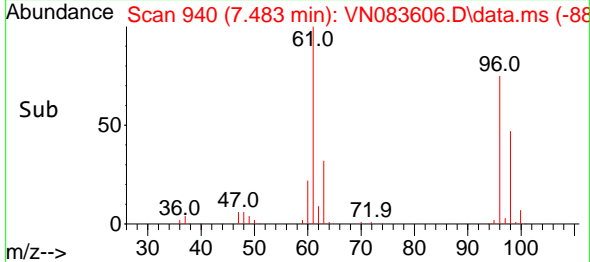
#27  
 cis-1,2-Dichloroethene  
 Concen: 108.268 ug/l  
 RT: 7.483 min Scan# 94  
 Delta R.T. 0.000 min  
 Lab File: VN083606.D  
 Acq: 31 Aug 2024 09:45

Instrument :  
 MSVOA\_N  
 ClientSampleId :

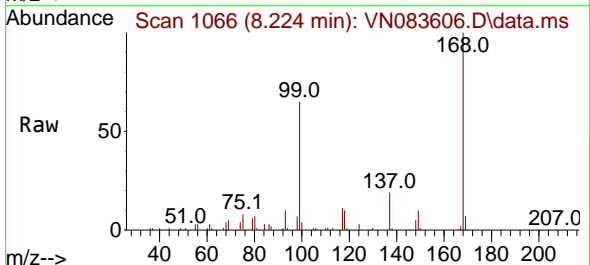


Tgt Ion: 96 Resp: 220274

Ion	Ratio	Lower	Upper
96	100		
61	134.3	0.0	306.2
98	63.4	0.0	128.6

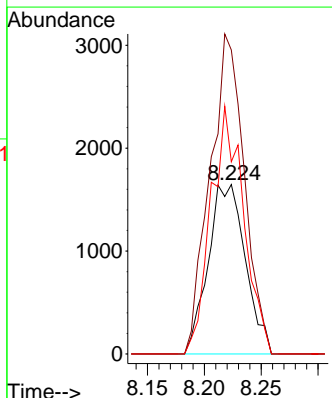
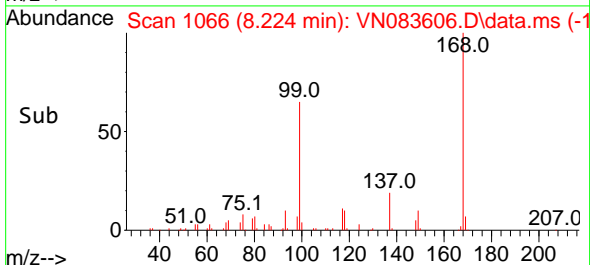


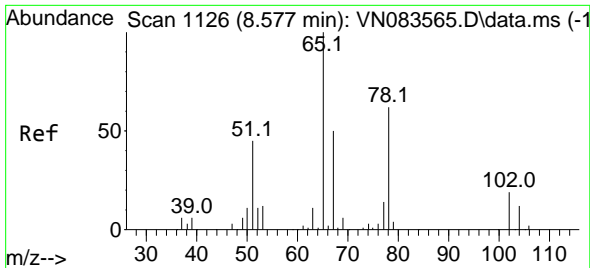
#31  
 Cyclohexane  
 Concen: 1.162 ug/l  
 RT: 8.224 min Scan# 1066  
 Delta R.T. -0.029 min  
 Lab File: VN083606.D  
 Acq: 31 Aug 2024 09:45



Tgt Ion: 56 Resp: 3755

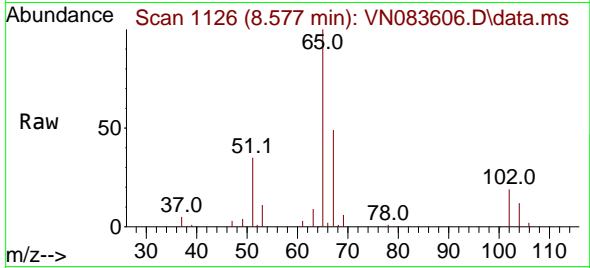
Ion	Ratio	Lower	Upper
56	100		
69	179.4	26.9	40.3#
84	113.4	69.2	103.8#



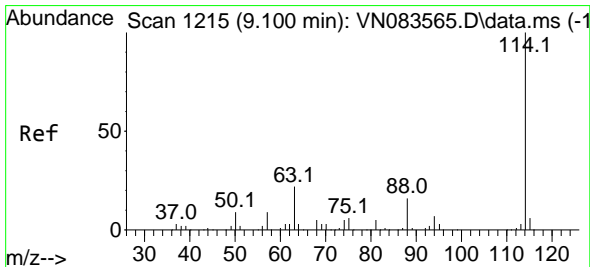
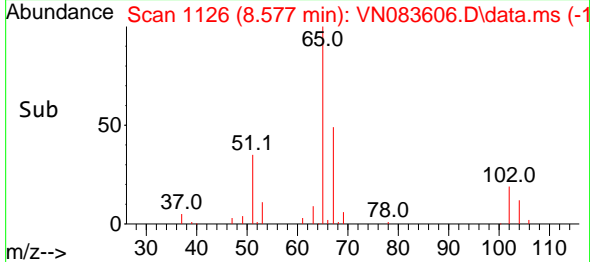
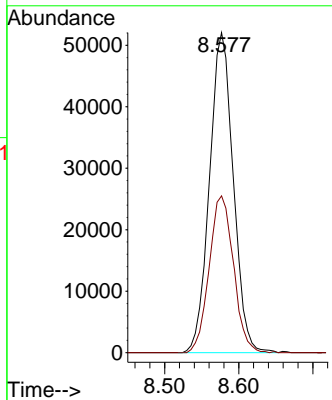


#33  
 1,2-Dichloroethane-d4  
 Concen: 55.489 ug/l  
 RT: 8.577 min Scan# 1126  
 Delta R.T. 0.000 min  
 Lab File: VN083606.D  
 Acq: 31 Aug 2024 09:45

Instrument :  
 MSVOA\_N  
 ClientSampleId :

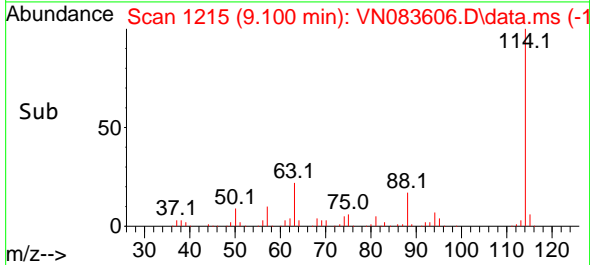
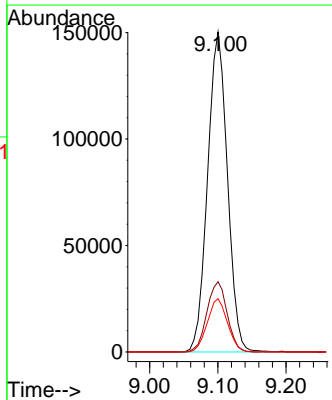
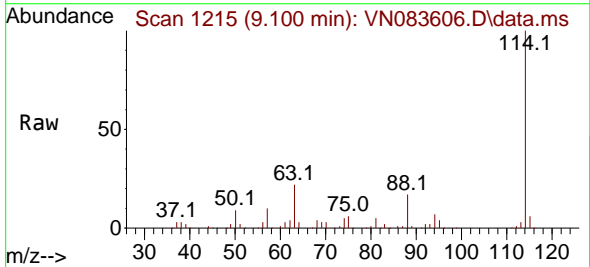


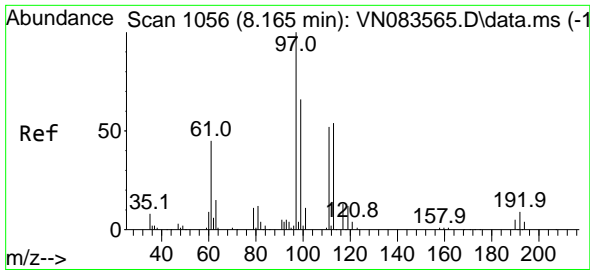
Tgt Ion: 65 Resp: 115869  
 Ion Ratio Lower Upper  
 65 100  
 67 50.2 0.0 100.8



#34  
 1,4-Difluorobenzene  
 Concen: 50.000 ug/l  
 RT: 9.100 min Scan# 1215  
 Delta R.T. 0.000 min  
 Lab File: VN083606.D  
 Acq: 31 Aug 2024 09:45

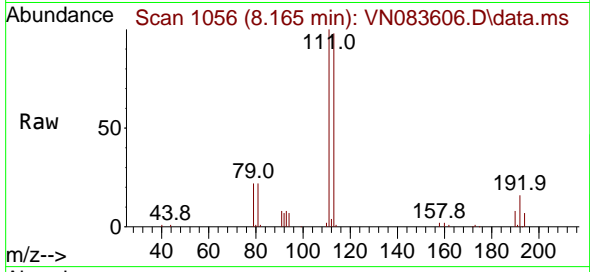
Tgt Ion: 114 Resp: 304157  
 Ion Ratio Lower Upper  
 114 100  
 63 22.0 0.0 43.4  
 88 16.7 0.0 32.6



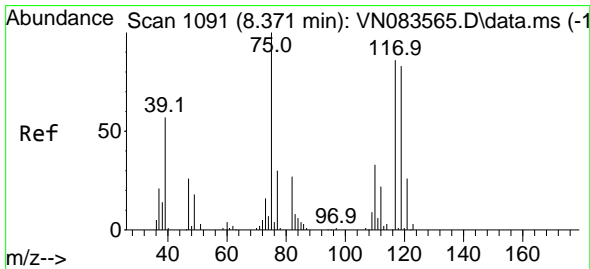
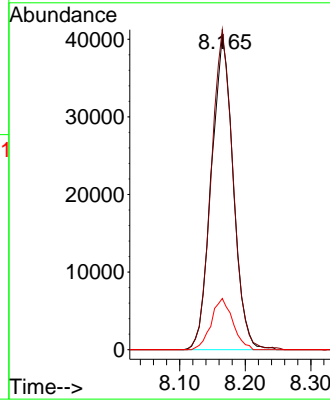
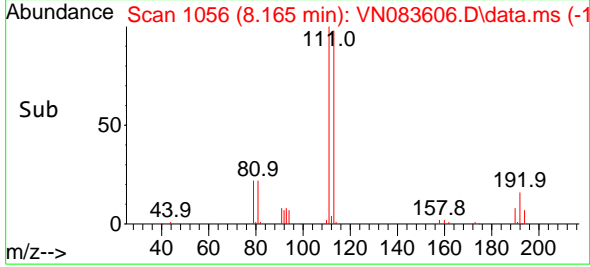


#35  
 Dibromofluoromethane  
 Concen: 51.239 ug/l  
 RT: 8.165 min Scan# 1065  
 Delta R.T. 0.000 min  
 Lab File: VN083606.D  
 Acq: 31 Aug 2024 09:45

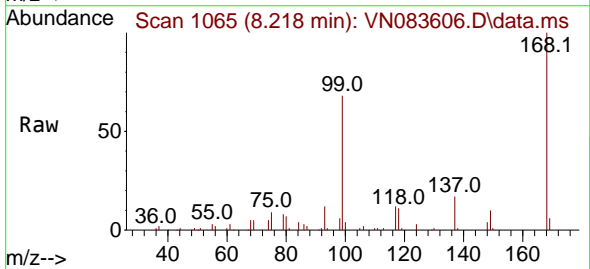
Instrument : MSVOA\_N  
 ClientSampleId :



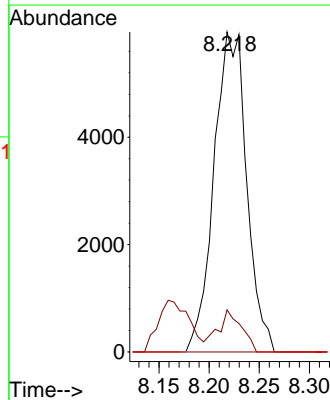
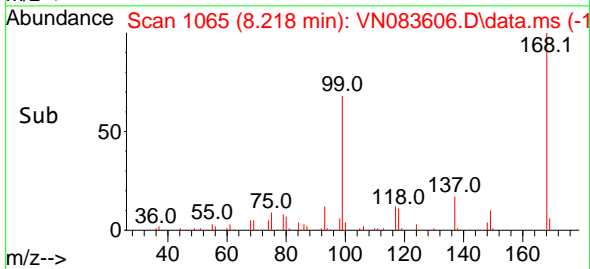
Tgt Ion: 113 Resp: 93801  
 Ion Ratio Lower Upper  
 113 100  
 111 101.6 82.6 124.0  
 192 16.1 14.3 21.5

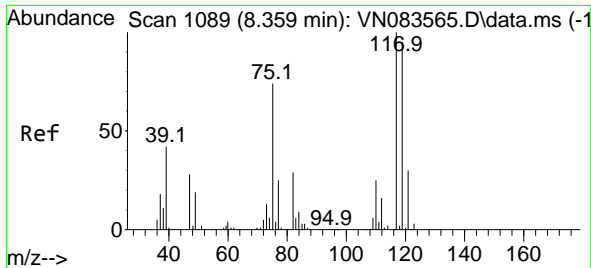


#36  
 1,1-Dichloropropene  
 Concen: 4.826 ug/l  
 RT: 8.218 min Scan# 1065  
 Delta R.T. -0.153 min  
 Lab File: VN083606.D  
 Acq: 31 Aug 2024 09:45



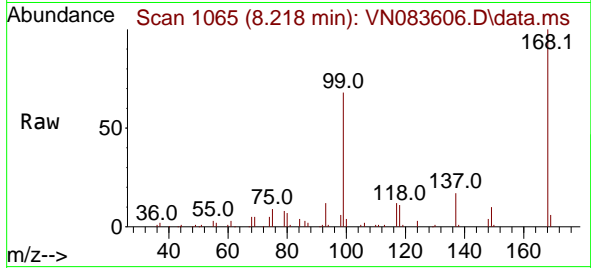
Tgt Ion: 75 Resp: 13477  
 Ion Ratio Lower Upper  
 75 100  
 110 9.6 16.7 50.1#  
 77 0.0 25.2 37.8#



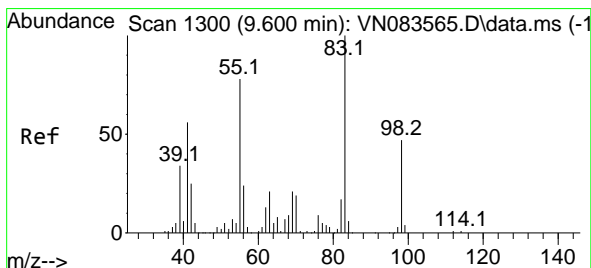
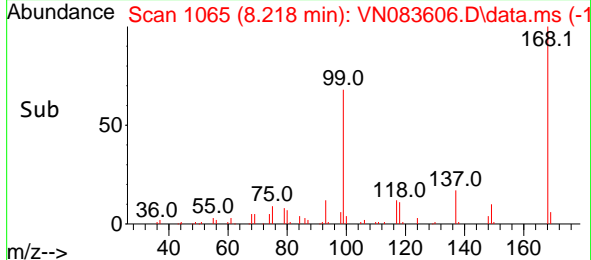
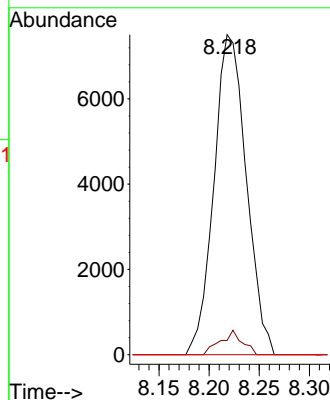


#38  
 Carbon Tetrachloride  
 Concen: 5.292 ug/l  
 RT: 8.218 min Scan# 1089  
 Delta R.T. -0.141 min  
 Lab File: VN083606.D  
 Acq: 31 Aug 2024 09:45

Instrument : MSVOA\_N  
 ClientSampleId :

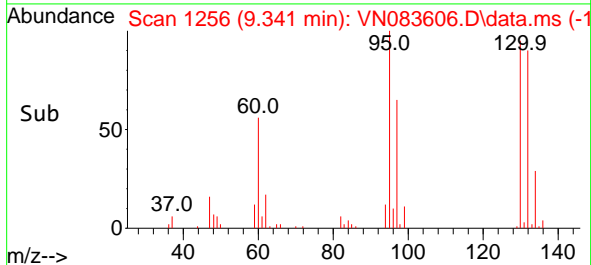
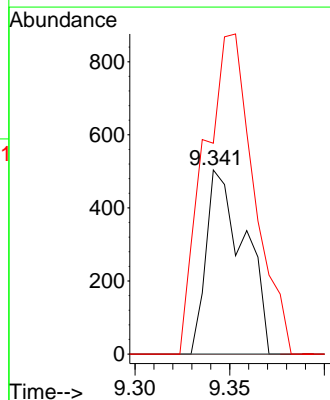
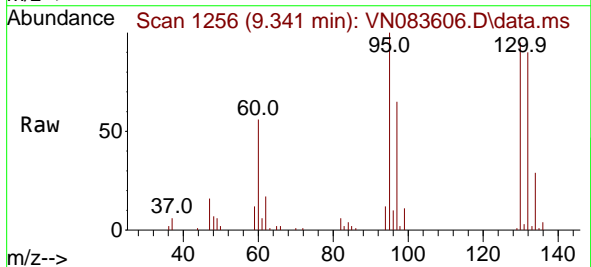


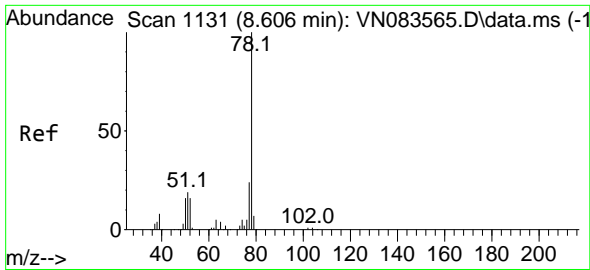
Tgt Ion: 117 Resp: 16861  
 Ion Ratio Lower Upper  
 117 100  
 119 4.4 76.1 114.1#  
 121 0.0 24.1 36.1#



#39  
 Methylcyclohexane  
 Concen: 0.211 ug/l  
 RT: 9.341 min Scan# 1256  
 Delta R.T. -0.259 min  
 Lab File: VN083606.D  
 Acq: 31 Aug 2024 09:45

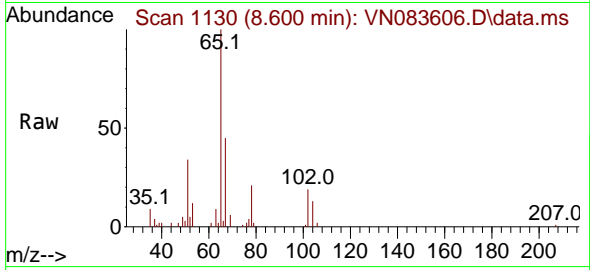
Tgt Ion: 83 Resp: 708  
 Ion Ratio Lower Upper  
 83 100  
 55 0.0 62.2 93.4#  
 98 114.5 37.6 56.4#



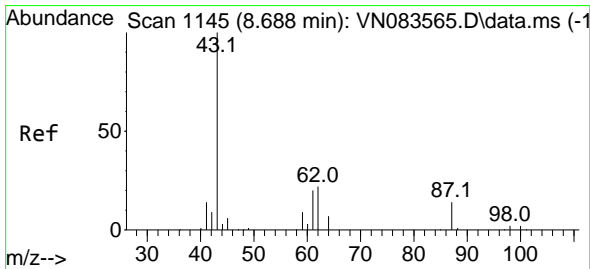
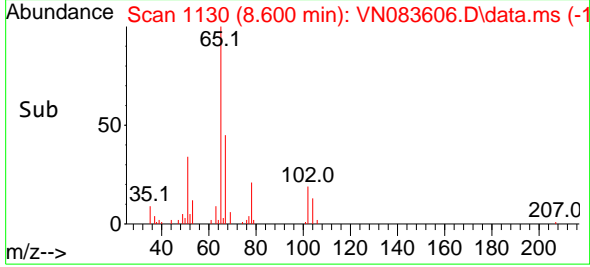
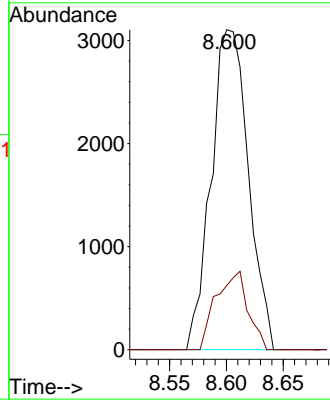


#40  
 Benzene  
 Concen: 0.825 ug/l  
 RT: 8.600 min Scan# 1130  
 Delta R.T. -0.006 min  
 Lab File: VN083606.D  
 Acq: 31 Aug 2024 09:45

Instrument :  
 MSVOA\_N  
 ClientSampleId :

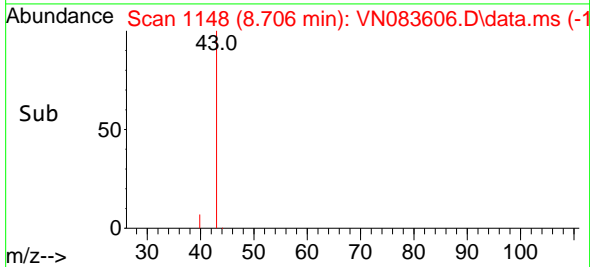
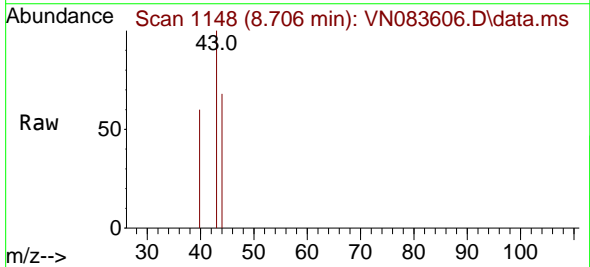
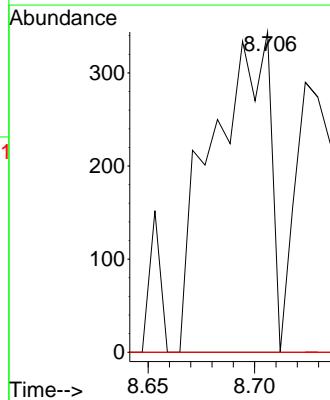


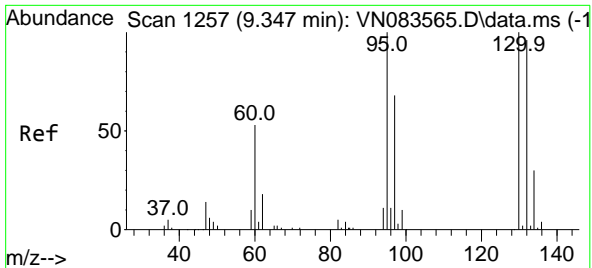
Tgt Ion: 78 Resp: 7087  
 Ion Ratio Lower Upper  
 78 100  
 77 20.0 19.0 28.6



#43  
 Isopropyl Acetate  
 Concen: Below Cal  
 RT: 8.706 min Scan# 1148  
 Delta R.T. 0.018 min  
 Lab File: VN083606.D  
 Acq: 31 Aug 2024 09:45

Tgt Ion: 43 Resp: 649  
 Ion Ratio Lower Upper  
 43 100  
 61 0.0 19.4 29.0#  
 87 0.0 9.8 14.6#

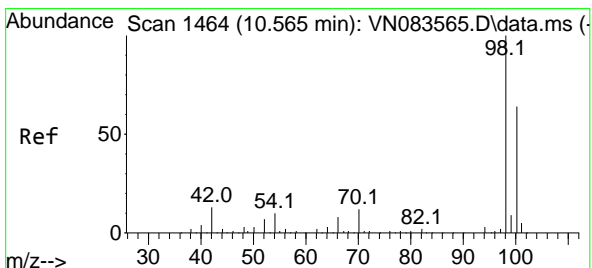
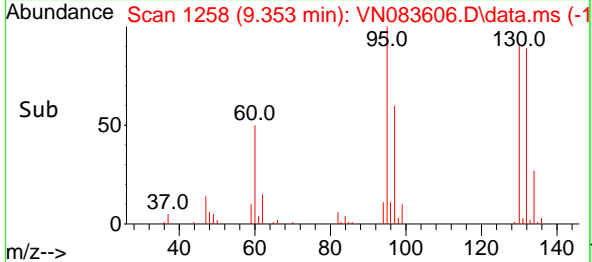
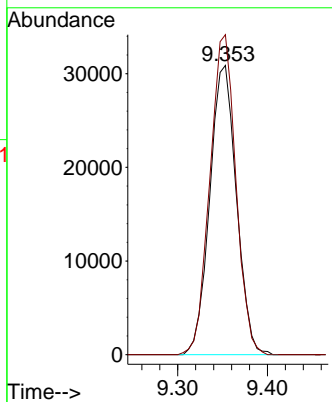
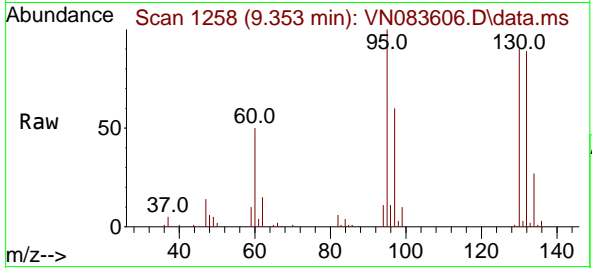




#44  
 Trichloroethene  
 Concen: 30.836 ug/l  
 RT: 9.353 min Scan# 11  
 Delta R.T. 0.006 min  
 Lab File: VN083606.D  
 Acq: 31 Aug 2024 09:45

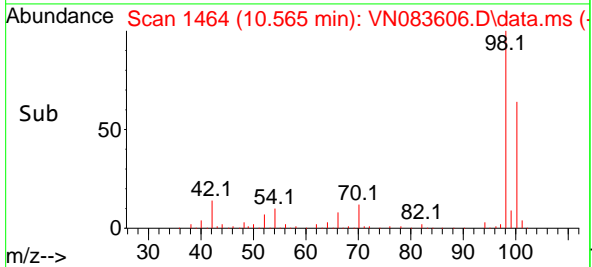
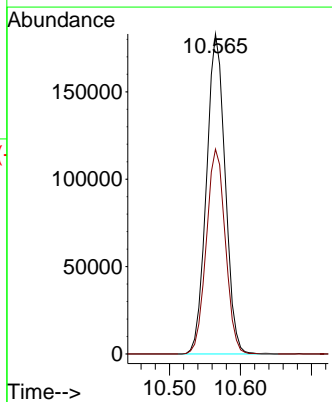
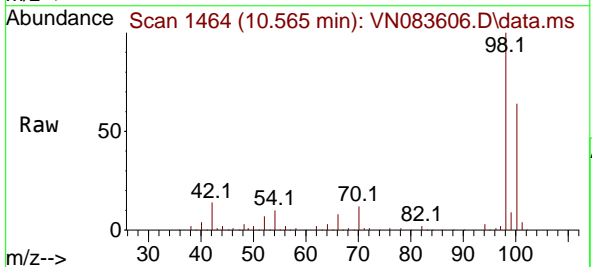
Instrument :  
 MSVOA\_N  
 ClientSampleId :

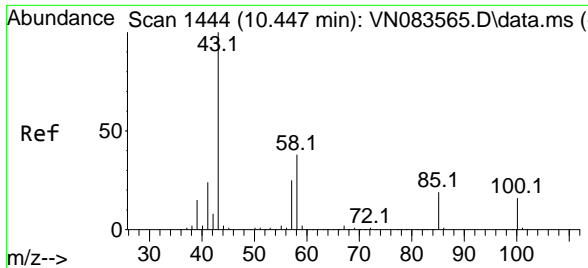
Tgt Ion:130 Resp: 63718  
 Ion Ratio Lower Upper  
 130 100  
 95 110.6 0.0 200.4



#50  
 Toluene-d8  
 Concen: 46.951 ug/l  
 RT: 10.565 min Scan# 1464  
 Delta R.T. -0.000 min  
 Lab File: VN083606.D  
 Acq: 31 Aug 2024 09:45

Tgt Ion: 98 Resp: 334580  
 Ion Ratio Lower Upper  
 98 100  
 100 65.1 52.0 78.0

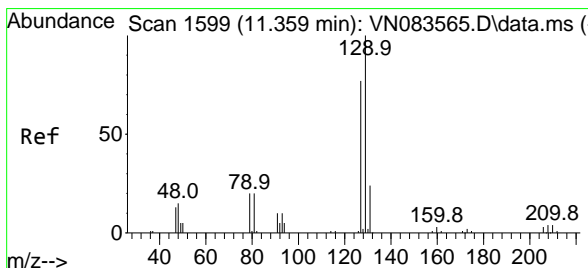
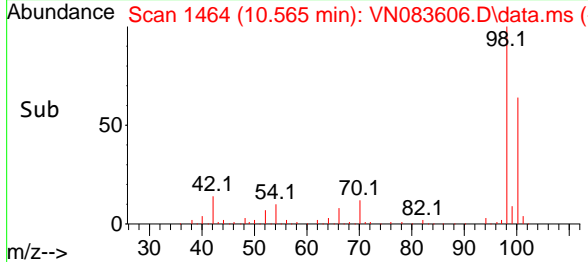
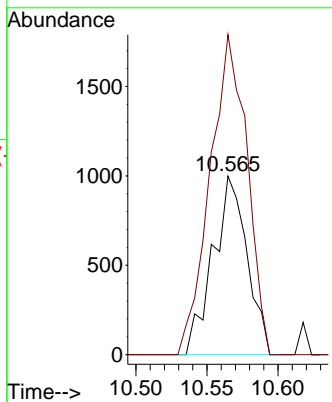
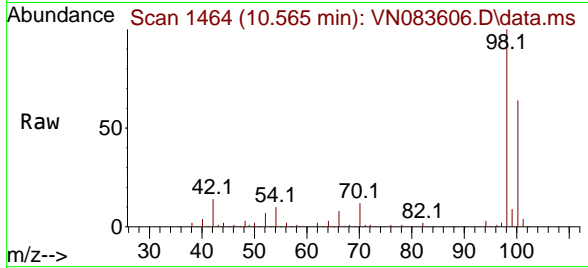




#51  
 4-Methyl-2-Pentanone  
 Concen: 0.643 ug/l  
 RT: 10.565 min Scan# 1464  
 Delta R.T. 0.118 min  
 Lab File: VN083606.D  
 Acq: 31 Aug 2024 09:45

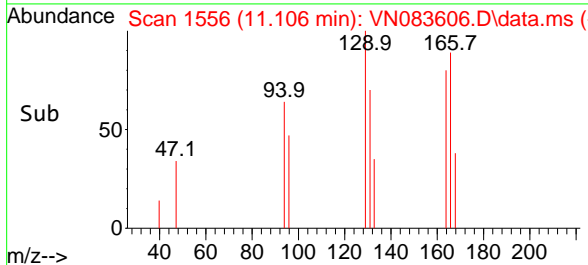
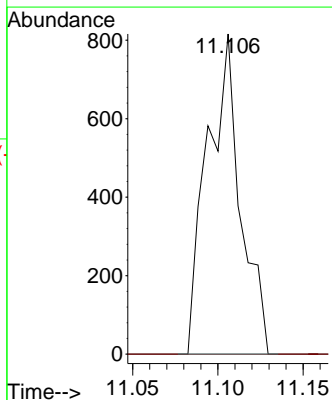
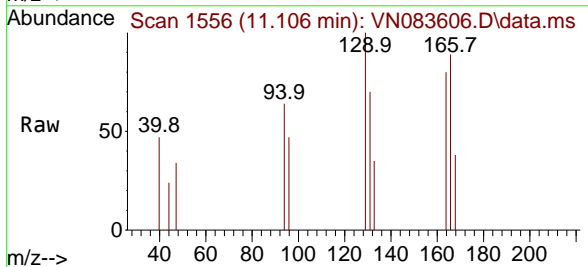
Instrument :  
 MSVOA\_N  
 ClientSampleId :

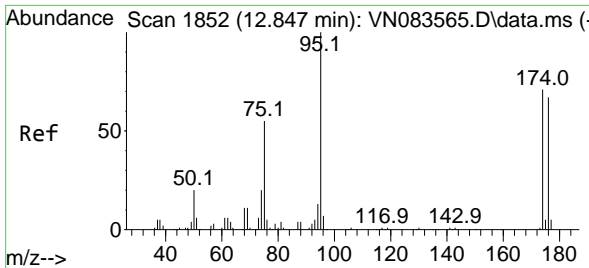
Tgt Ion: 43 Resp: 1661  
 Ion Ratio Lower Upper  
 43 100  
 58 195.7 31.6 47.4#



#60  
 Dibromochloromethane  
 Concen: 0.497 ug/l  
 RT: 11.106 min Scan# 1556  
 Delta R.T. -0.253 min  
 Lab File: VN083606.D  
 Acq: 31 Aug 2024 09:45

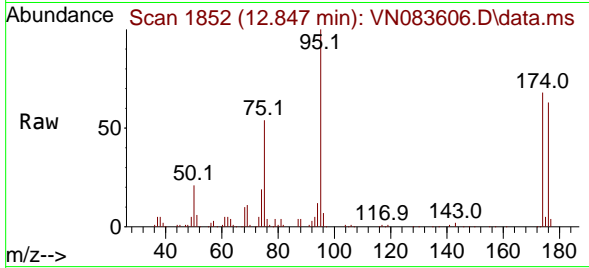
Tgt Ion: 129 Resp: 1105  
 Ion Ratio Lower Upper  
 129 100  
 127 0.0 39.0 116.9#



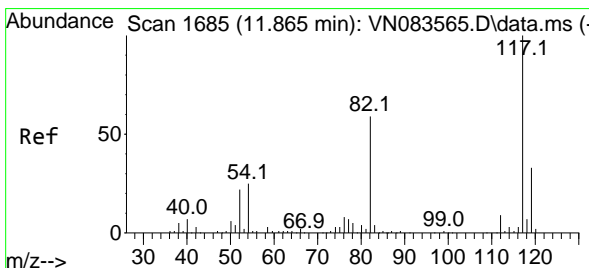
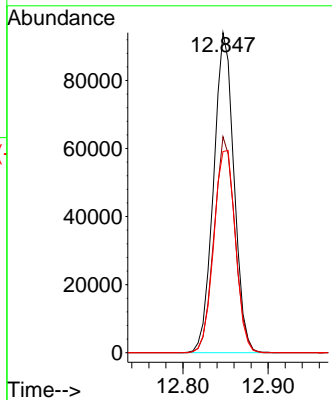
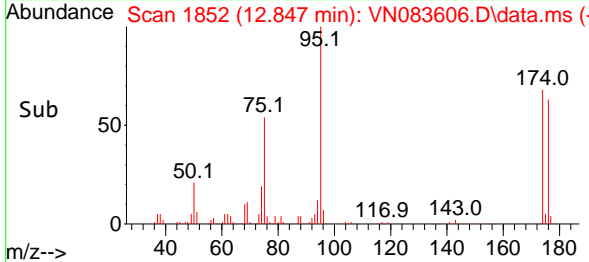


#62  
 4-Bromofluorobenzene  
 Concen: 59.237 ug/l  
 RT: 12.847 min Scan# 1852  
 Delta R.T. 0.000 min  
 Lab File: VN083606.D  
 Acq: 31 Aug 2024 09:45

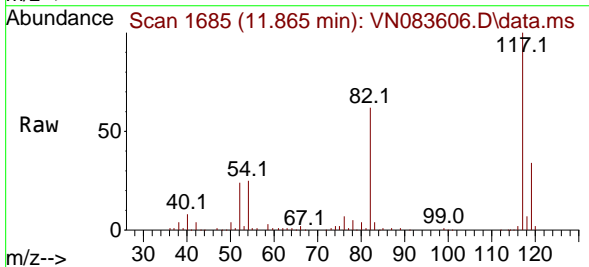
Instrument :  
 MSVOA\_N  
 ClientSampleId :



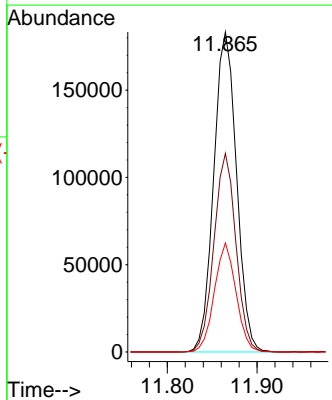
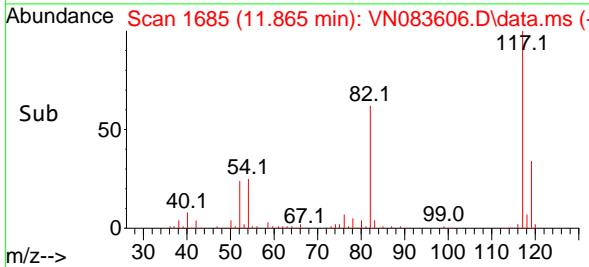
Tgt Ion: 95 Resp: 156436  
 Ion Ratio Lower Upper  
 95 100  
 174 68.7 0.0 139.8  
 176 67.3 0.0 131.4



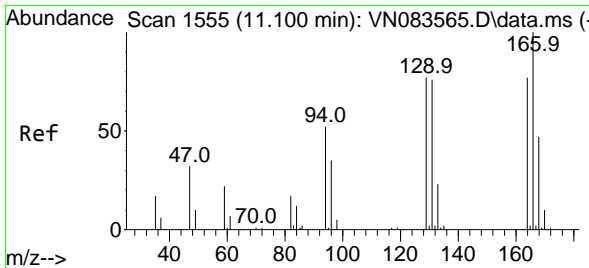
#63  
 Chlorobenzene-d5  
 Concen: 50.000 ug/l  
 RT: 11.865 min Scan# 1685  
 Delta R.T. 0.000 min  
 Lab File: VN083606.D  
 Acq: 31 Aug 2024 09:45



Tgt Ion: 117 Resp: 323503  
 Ion Ratio Lower Upper  
 117 100  
 82 62.0 47.4 71.0  
 119 34.0 26.3 39.5

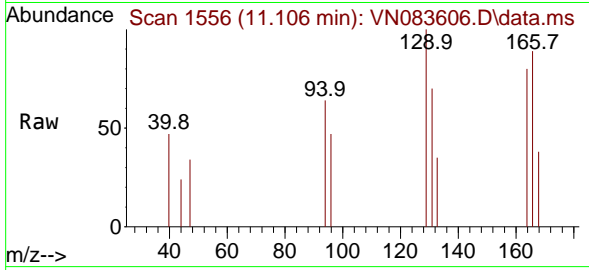




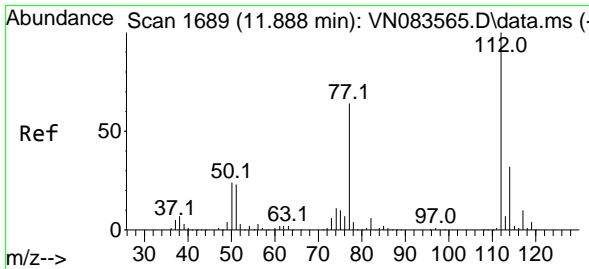
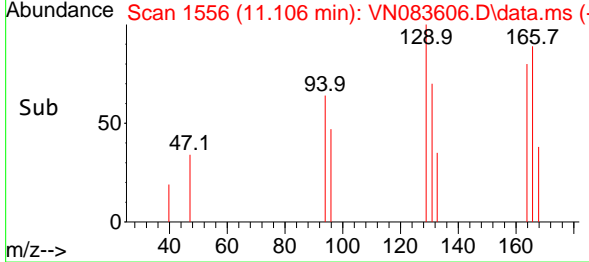
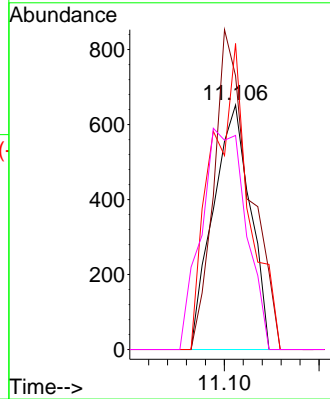


#64  
 Tetrachloroethene  
 Concen: 0.417 ug/l  
 RT: 11.106 min Scan# 1111  
 Delta R.T. 0.006 min  
 Lab File: VN083606.D  
 Acq: 31 Aug 2024 09:45

Instrument :  
 MSVOA\_N  
 ClientSampleId :

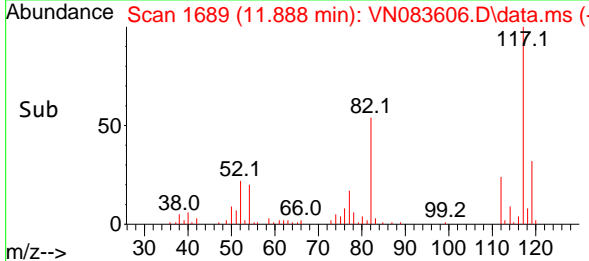
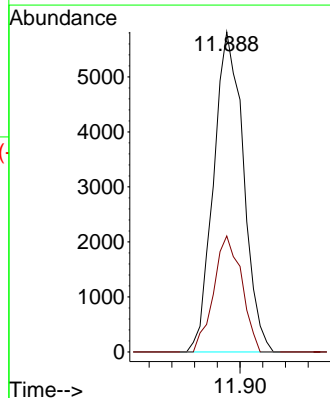
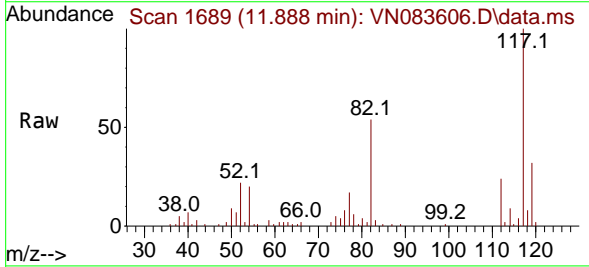


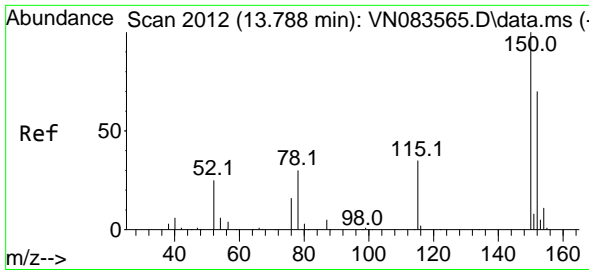
Tgt Ion:164 Resp: 886  
 Ion Ratio Lower Upper  
 164 100  
 166 112.0 103.7 155.5  
 129 125.2 79.9 119.9#  
 131 87.6 78.4 117.6



#65  
 Chlorobenzene  
 Concen: 1.460 ug/l  
 RT: 11.888 min Scan# 1689  
 Delta R.T. 0.000 min  
 Lab File: VN083606.D  
 Acq: 31 Aug 2024 09:45

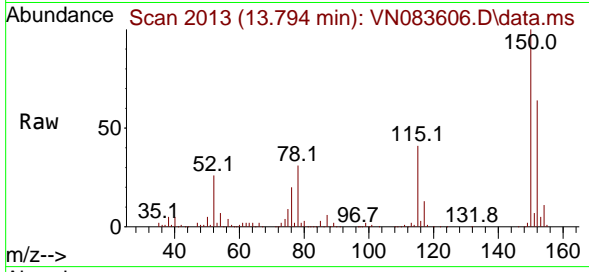
Tgt Ion:112 Resp: 10594  
 Ion Ratio Lower Upper  
 112 100  
 114 36.2 25.7 38.5



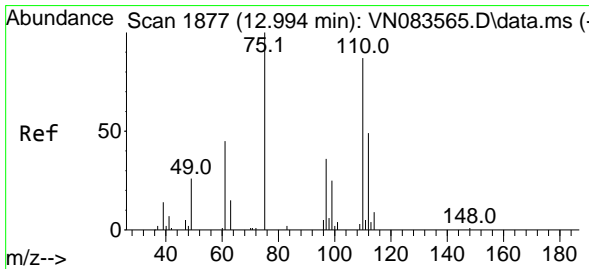
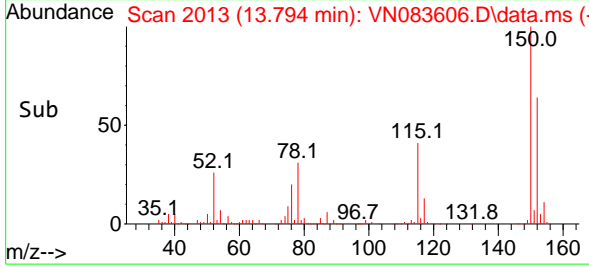
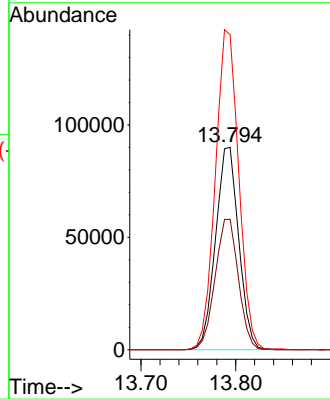


#72  
 1,4-Dichlorobenzene-d4  
 Concen: 50.000 ug/l  
 RT: 13.794 min Scan# 2012  
 Delta R.T. 0.006 min  
 Lab File: VN083606.D  
 Acq: 31 Aug 2024 09:45

Instrument : MSVOA\_N  
 ClientSampleId :

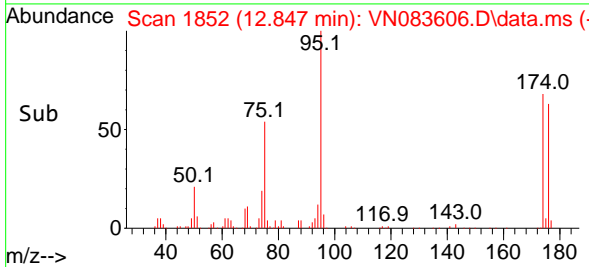
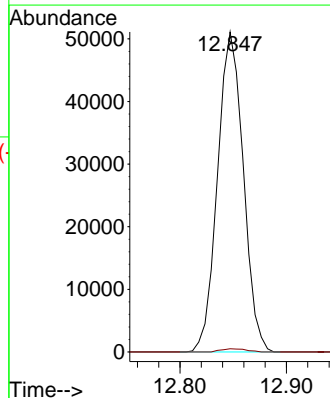
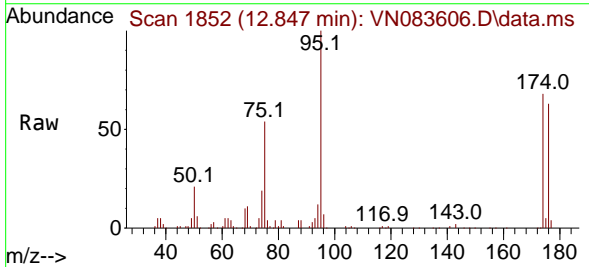


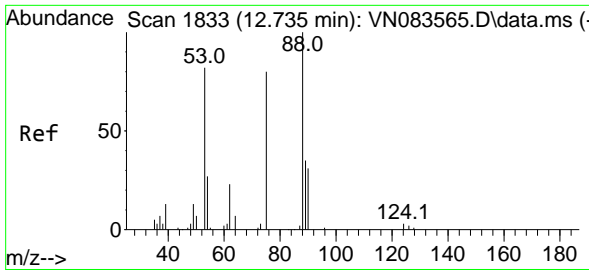
Tgt Ion:152 Resp: 153064  
 Ion Ratio Lower Upper  
 152 100  
 115 65.0 32.2 96.6  
 150 159.3 0.0 348.6



#76  
 1,2,3-Trichloropropane  
 Concen: 27.801 ug/l  
 RT: 12.847 min Scan# 1852  
 Delta R.T. -0.147 min  
 Lab File: VN083606.D  
 Acq: 31 Aug 2024 09:45

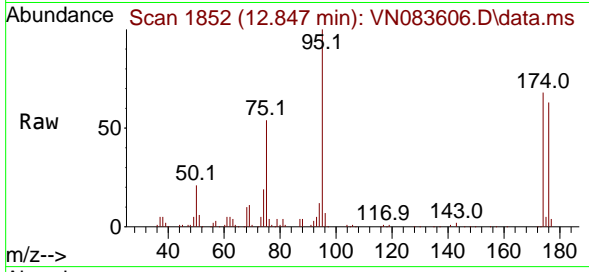
Tgt Ion: 75 Resp: 85913  
 Ion Ratio Lower Upper  
 75 100  
 77 1.0 95.2 285.6#



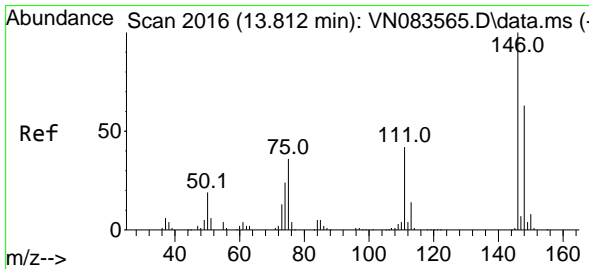
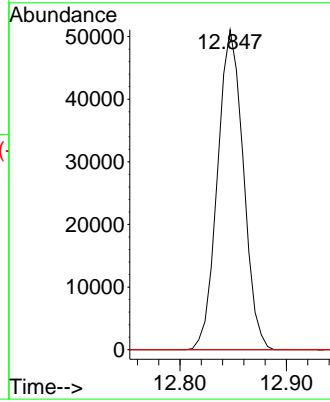
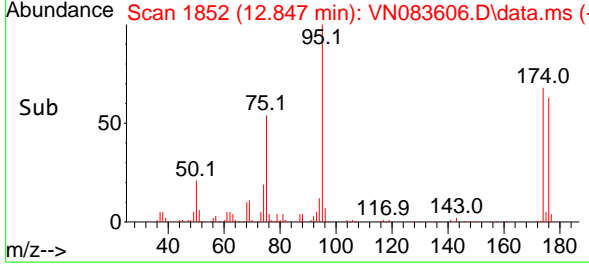


#81  
 trans-1,4-Dichloro-2-butene  
 Concen: 65.570 ug/l  
 RT: 12.847 min Scan# 1833  
 Delta R.T. 0.112 min  
 Lab File: VN083606.D  
 Acq: 31 Aug 2024 09:45

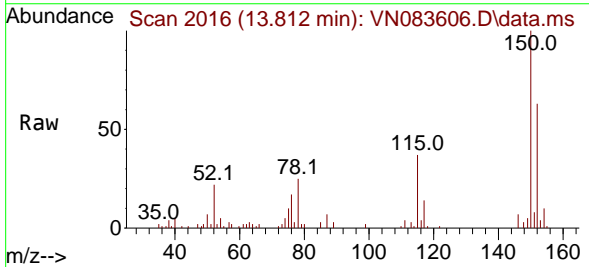
Instrument : MSVOA\_N  
 ClientSampleId :



Tgt Ion: 75 Resp: 85913  
 Ion Ratio Lower Upper  
 75 100  
 53 0.0 81.2 121.8#  
 89 0.0 35.7 53.5#



#88  
 1,4-Dichlorobenzene  
 Concen: 0.568 ug/l  
 RT: 13.812 min Scan# 2016  
 Delta R.T. 0.000 min  
 Lab File: VN083606.D  
 Acq: 31 Aug 2024 09:45



Tgt Ion:146 Resp: 3293  
 Ion Ratio Lower Upper  
 146 100  
 111 0.0 21.3 64.0#  
 148 65.2 32.0 96.2

