

Data Path : Z:\voasrv\HPCHEM1\MSVOA\_N\Data\VN083024\  
 Data File : VN083611.D  
 Acq On : 31 Aug 2024 11:44  
 Operator : JC\MD  
 Sample : P3777-05  
 Misc : 5.0mL/MSVOA\_N/WATER  
 ALS Vial : 56 Sample Multiplier: 1

Instrument :  
 MSVOA\_N  
 ClientSampleId :  
 MW-04-12-082824

Quant Time: Sep 02 01:04:57 2024  
 Quant Method : Z:\voasrv\HPCHEM1\MSVOA\_N\methods\82N083024W.M  
 Quant Title : SW846 8260  
 QLast Update : Sat Aug 31 00:48:10 2024  
 Response via : Initial Calibration

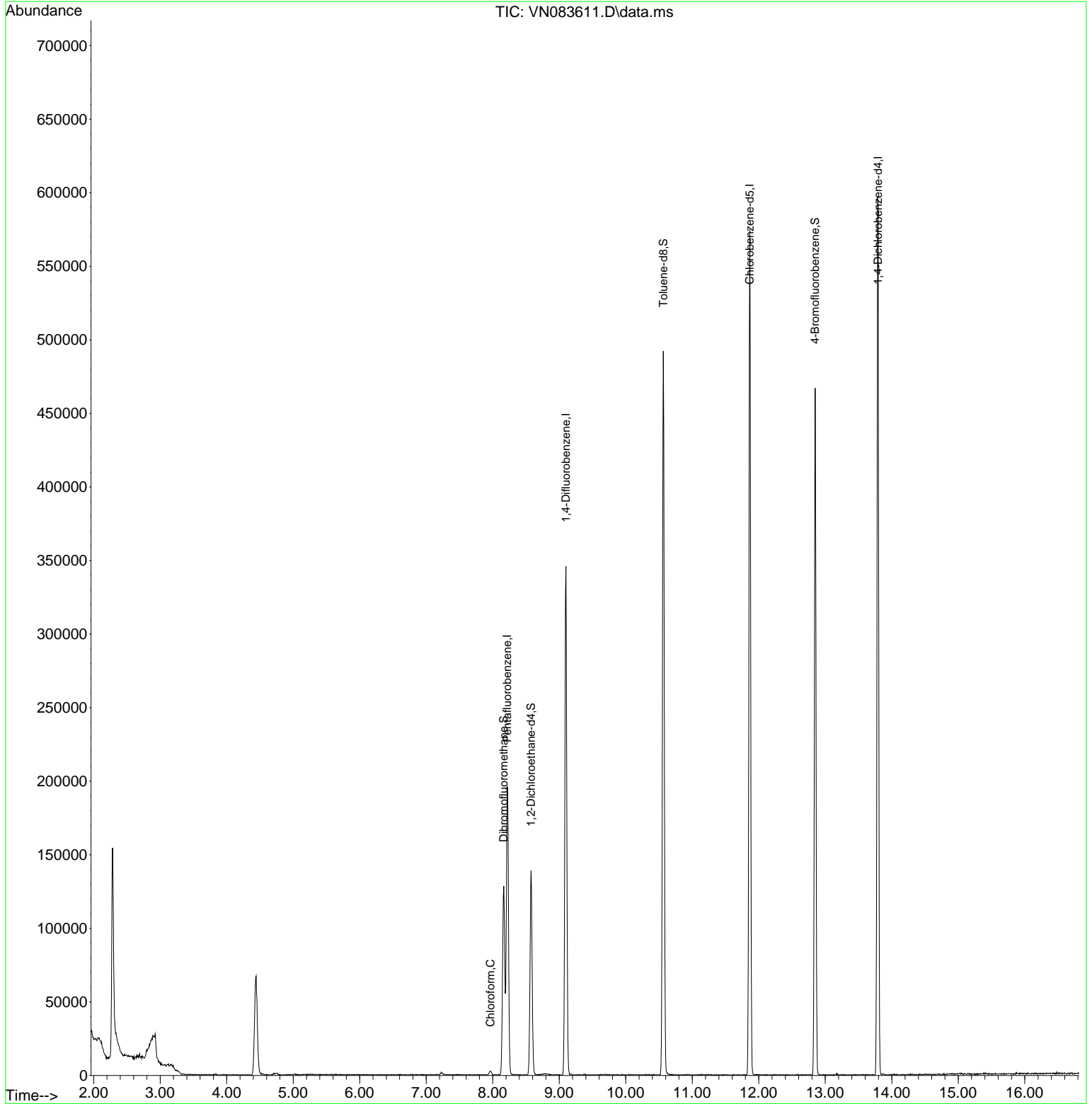
Compound	R.T.	QIon	Response	Conc	Units	Dev(Min)
-----						
Internal Standards						
1) Pentafluorobenzene	8.218	168	135209	50.000	ug/l	0.00
34) 1,4-Difluorobenzene	9.100	114	282187	50.000	ug/l	0.00
63) Chlorobenzene-d5	11.865	117	313260	50.000	ug/l	0.00
72) 1,4-Dichlorobenzene-d4	13.794	152	156000	50.000	ug/l	0.00
System Monitoring Compounds						
33) 1,2-Dichloroethane-d4	8.577	65	114342	60.509	ug/l	0.00
Spiked Amount	50.000	Range	74 - 125	Recovery	=	121.020%
35) Dibromofluoromethane	8.165	113	90712	53.410	ug/l	0.00
Spiked Amount	50.000	Range	75 - 124	Recovery	=	106.820%
50) Toluene-d8	10.565	98	331977	50.133	ug/l	0.00
Spiked Amount	50.000	Range	86 - 113	Recovery	=	100.260%
62) 4-Bromofluorobenzene	12.847	95	158218	64.576	ug/l	0.00
Spiked Amount	50.000	Range	77 - 121	Recovery	=	129.160%#
Target Compounds						
30) Chloroform	7.965	83	2696	0.862	ug/l	90
-----						

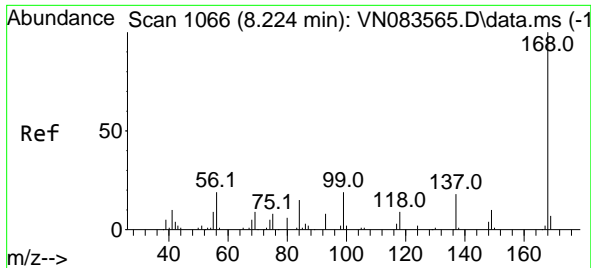
(#) = qualifier out of range (m) = manual integration (+) = signals summed

Data Path : Z:\voasrv\HPCHEM1\MSVOA\_N\Data\VN083024\  
Data File : VN083611.D  
Acq On : 31 Aug 2024 11:44  
Operator : JC\MD  
Sample : P3777-05  
Misc : 5.0mL/MSVOA\_N/WATER  
ALS Vial : 56 Sample Multiplier: 1

Instrument :  
MSVOA\_N  
ClientSampleId :  
MW-04-12-082824

Quant Time: Sep 02 01:04:57 2024  
Quant Method : Z:\voasrv\HPCHEM1\MSVOA\_N\methods\82N083024W.M  
Quant Title : SW846 8260  
QLast Update : Sat Aug 31 00:48:10 2024  
Response via : Initial Calibration

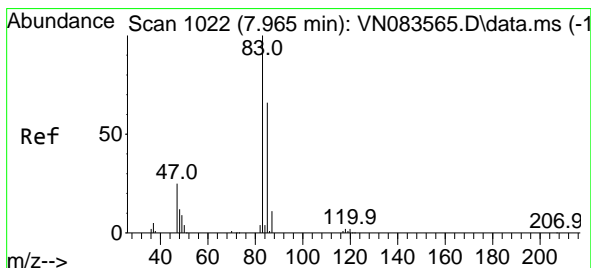
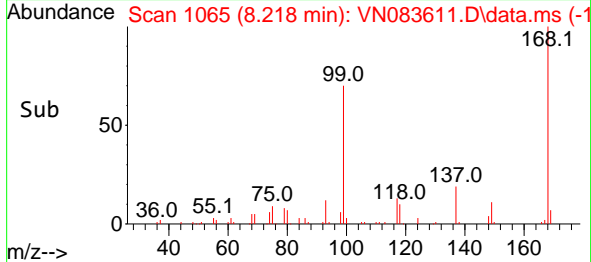
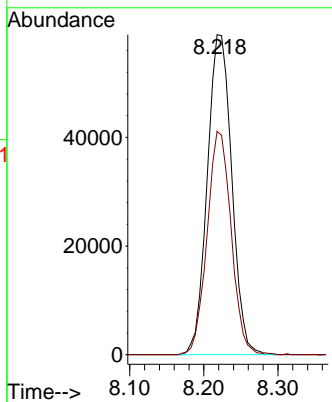
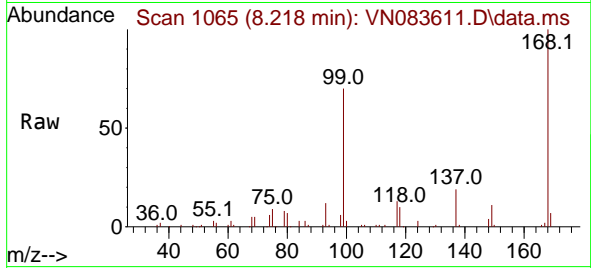




#1  
 Pentafluorobenzene  
 Concen: 50.000 ug/l  
 RT: 8.218 min Scan# 1065  
 Delta R.T. -0.006 min  
 Lab File: VN083611.D  
 Acq: 31 Aug 2024 11:44

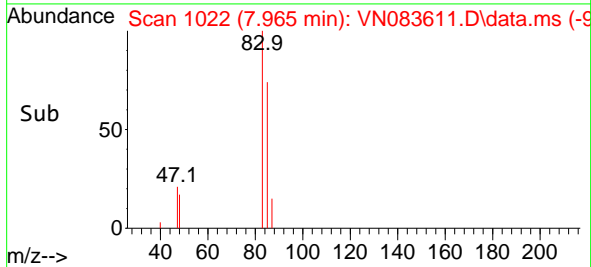
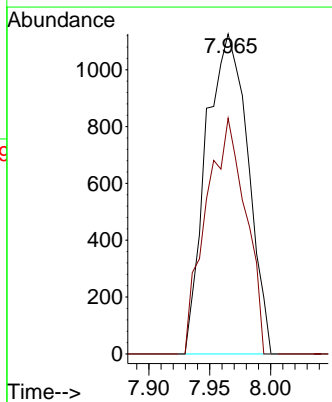
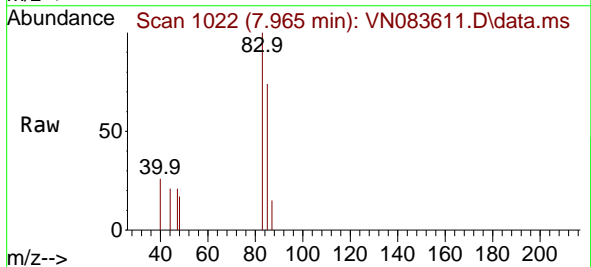
Instrument : MSVOA\_N  
 ClientSampleId : MW-04-12-082824

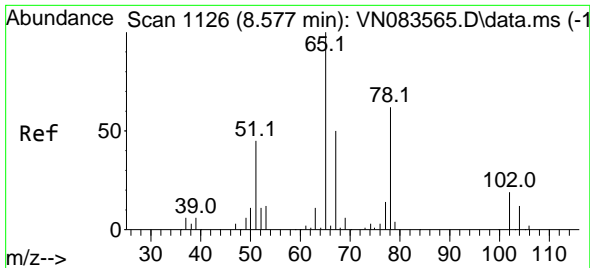
Tgt Ion:168 Resp: 135209  
 Ion Ratio Lower Upper  
 168 100  
 99 69.8 54.2 81.2



#30  
 Chloroform  
 Concen: 0.862 ug/l  
 RT: 7.965 min Scan# 1022  
 Delta R.T. 0.000 min  
 Lab File: VN083611.D  
 Acq: 31 Aug 2024 11:44

Tgt Ion: 83 Resp: 2696  
 Ion Ratio Lower Upper  
 83 100  
 85 73.6 52.8 79.2

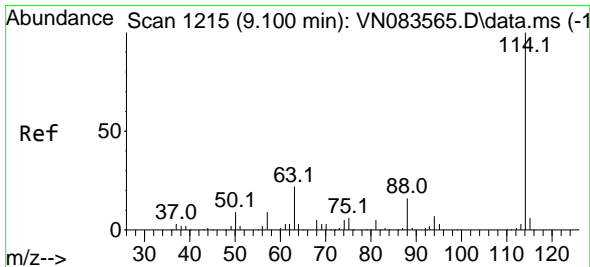
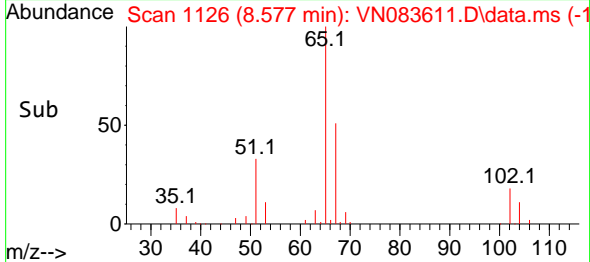
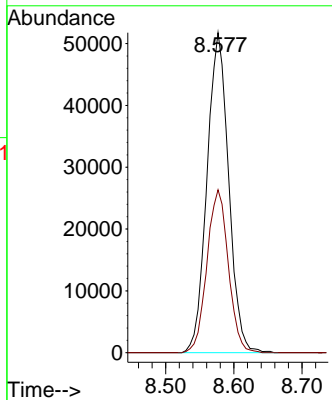
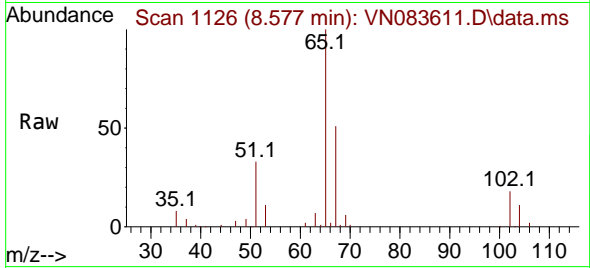




#33  
 1,2-Dichloroethane-d4  
 Concen: 60.509 ug/l  
 RT: 8.577 min Scan# 1126  
 Delta R.T. 0.000 min  
 Lab File: VN083611.D  
 Acq: 31 Aug 2024 11:44

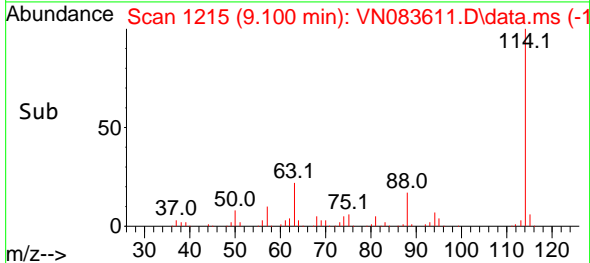
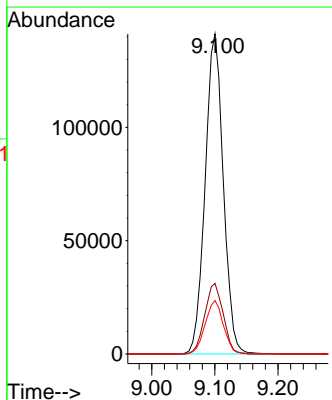
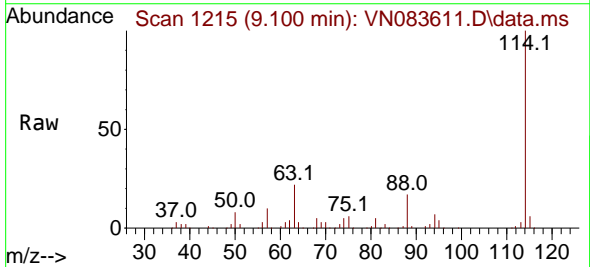
Instrument : MSVOA\_N  
 ClientSampleId : MW-04-12-082824

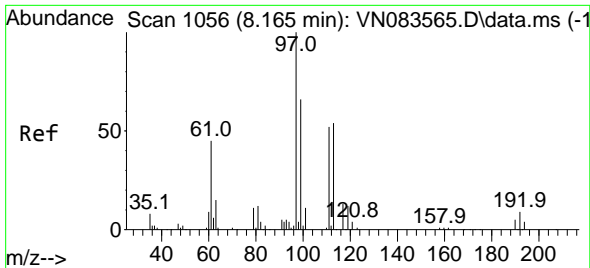
Tgt Ion: 65 Resp: 114342  
 Ion Ratio Lower Upper  
 65 100  
 67 50.3 0.0 100.8



#34  
 1,4-Difluorobenzene  
 Concen: 50.000 ug/l  
 RT: 9.100 min Scan# 1215  
 Delta R.T. 0.000 min  
 Lab File: VN083611.D  
 Acq: 31 Aug 2024 11:44

Tgt Ion: 114 Resp: 282187  
 Ion Ratio Lower Upper  
 114 100  
 63 22.0 0.0 43.4  
 88 16.7 0.0 32.6

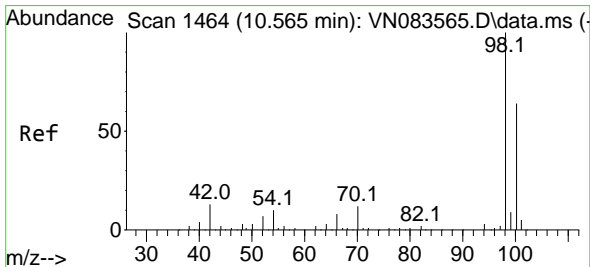
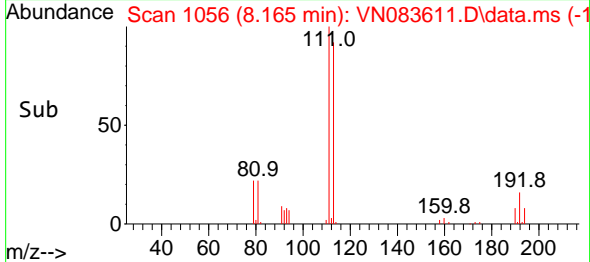
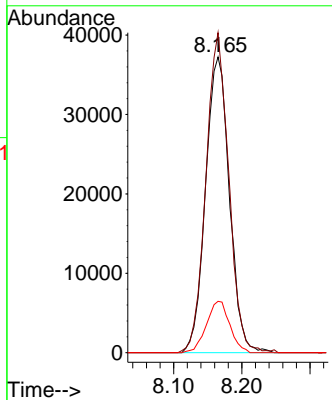
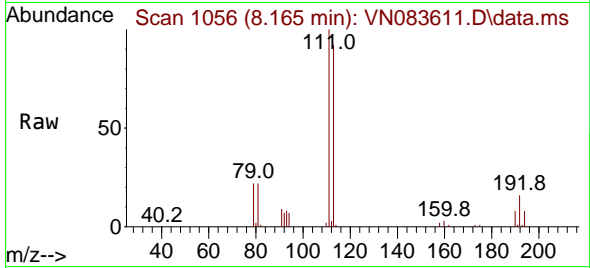




#35  
 Dibromofluoromethane  
 Concen: 53.410 ug/l  
 RT: 8.165 min Scan# 1056  
 Delta R.T. 0.000 min  
 Lab File: VN083611.D  
 Acq: 31 Aug 2024 11:44

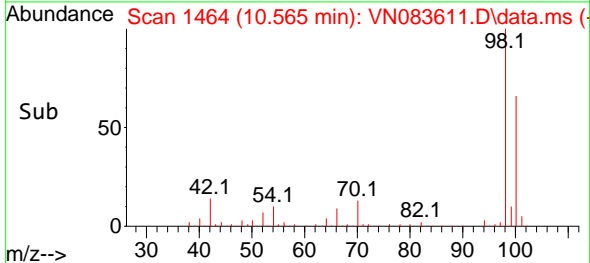
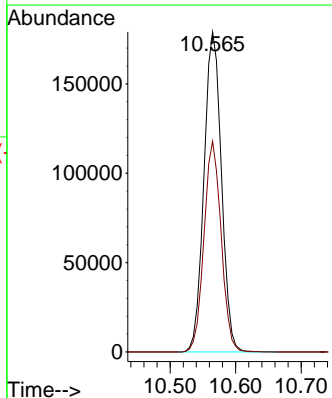
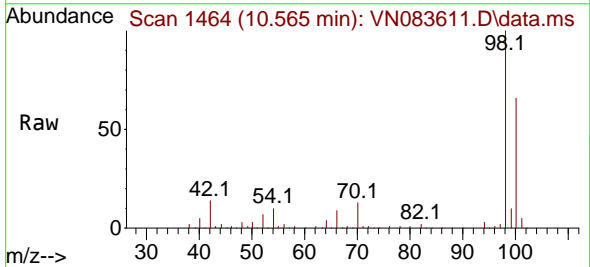
Instrument : MSVOA\_N  
 ClientSampleId : MW-04-12-082824

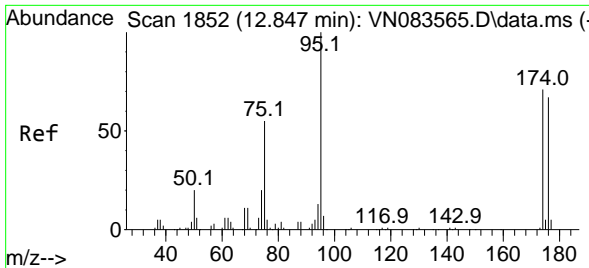
Tgt Ion	Resp	Lower	Upper
113	90712		
113	100		
111	103.6	82.6	124.0
192	17.0	14.3	21.5



#50  
 Toluene-d8  
 Concen: 50.133 ug/l  
 RT: 10.565 min Scan# 1464  
 Delta R.T. -0.000 min  
 Lab File: VN083611.D  
 Acq: 31 Aug 2024 11:44

Tgt Ion	Resp	Lower	Upper
98	331977		
98	100		
100	64.6	52.0	78.0



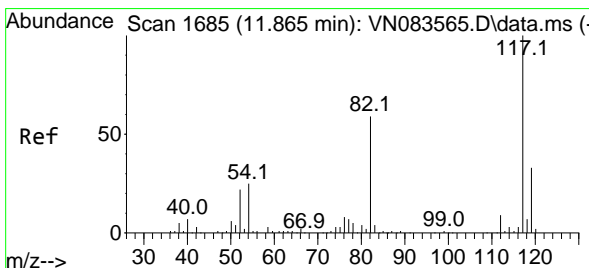
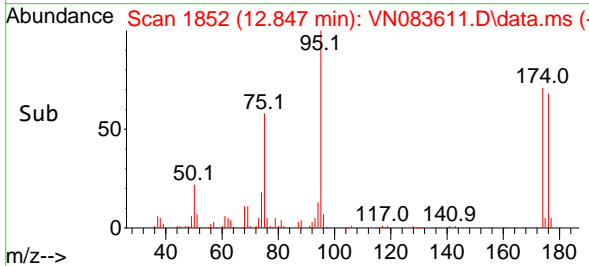
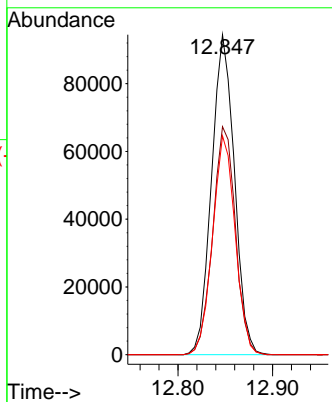
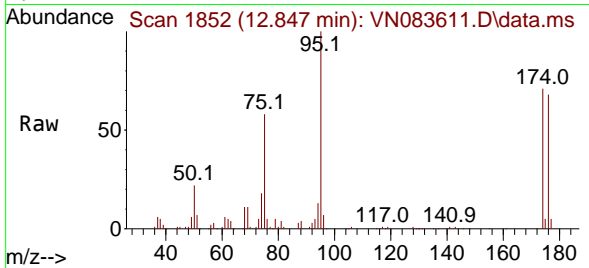


#62  
 4-Bromofluorobenzene  
 Concen: 64.576 ug/l  
 RT: 12.847 min Scan# 1852  
 Delta R.T. 0.000 min  
 Lab File: VN083611.D  
 Acq: 31 Aug 2024 11:44

Instrument : MSVOA\_N  
 ClientSampleId : MW-04-12-082824

Tgt Ion: 95 Resp: 158218

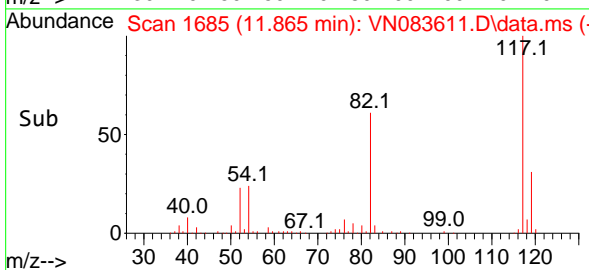
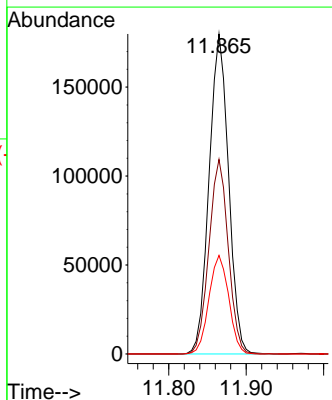
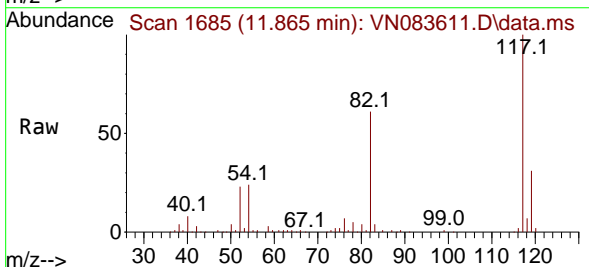
Ion	Ratio	Lower	Upper
95	100		
174	71.0	0.0	139.8
176	67.8	0.0	131.4

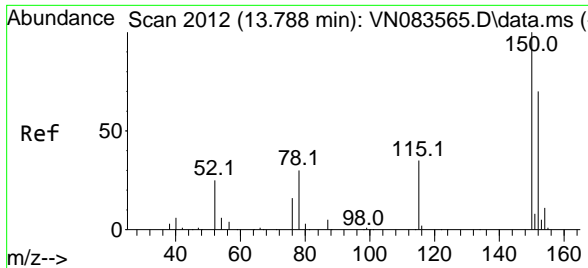


#63  
 Chlorobenzene-d5  
 Concen: 50.000 ug/l  
 RT: 11.865 min Scan# 1685  
 Delta R.T. 0.000 min  
 Lab File: VN083611.D  
 Acq: 31 Aug 2024 11:44

Tgt Ion: 117 Resp: 313260

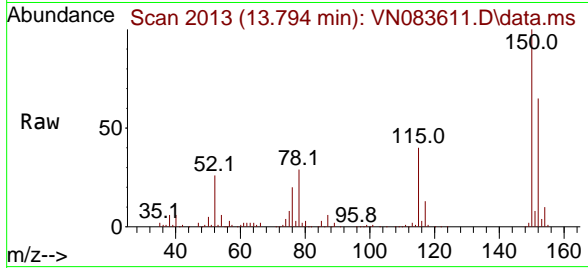
Ion	Ratio	Lower	Upper
117	100		
82	60.8	47.4	71.0
119	30.8	26.3	39.5





#72  
 1,4-Dichlorobenzene-d4  
 Concen: 50.000 ug/l  
 RT: 13.794 min Scan# 20  
 Delta R.T. 0.006 min  
 Lab File: VN083611.D  
 Acq: 31 Aug 2024 11:44

Instrument :  
 MSVOA\_N  
 ClientSampleId :  
 MW-04-12-082824



Tgt Ion:152 Resp: 156000

Ion	Ratio	Lower	Upper
152	100		
115	63.4	32.2	96.6
150	156.5	0.0	348.6

