

Data Path : Z:\voasrv\HPCHEM1\MSVOA_N\Data\VN083122\
 Data File : VN074213.D
 Acq On : 31 Aug 2022 14:45
 Operator : JC\MD
 Sample : N4350-01
 Misc : 5.0mL/MSVOA_N/WATER
 ALS Vial : 12 Sample Multiplier: 1

Instrument :
 MSVOA_N
 ClientSampleId :

Quant Time: Sep 01 00:25:20 2022
 Quant Method : Z:\voasrv\HPCHEM1\MSVOA_N\methods\82N083022W.M
 Quant Title : SW846 8260
 QLast Update : Wed Aug 31 07:02:40 2022
 Response via : Initial Calibration

Compound	R.T.	QIon	Response	Conc	Units	Dev(Min)

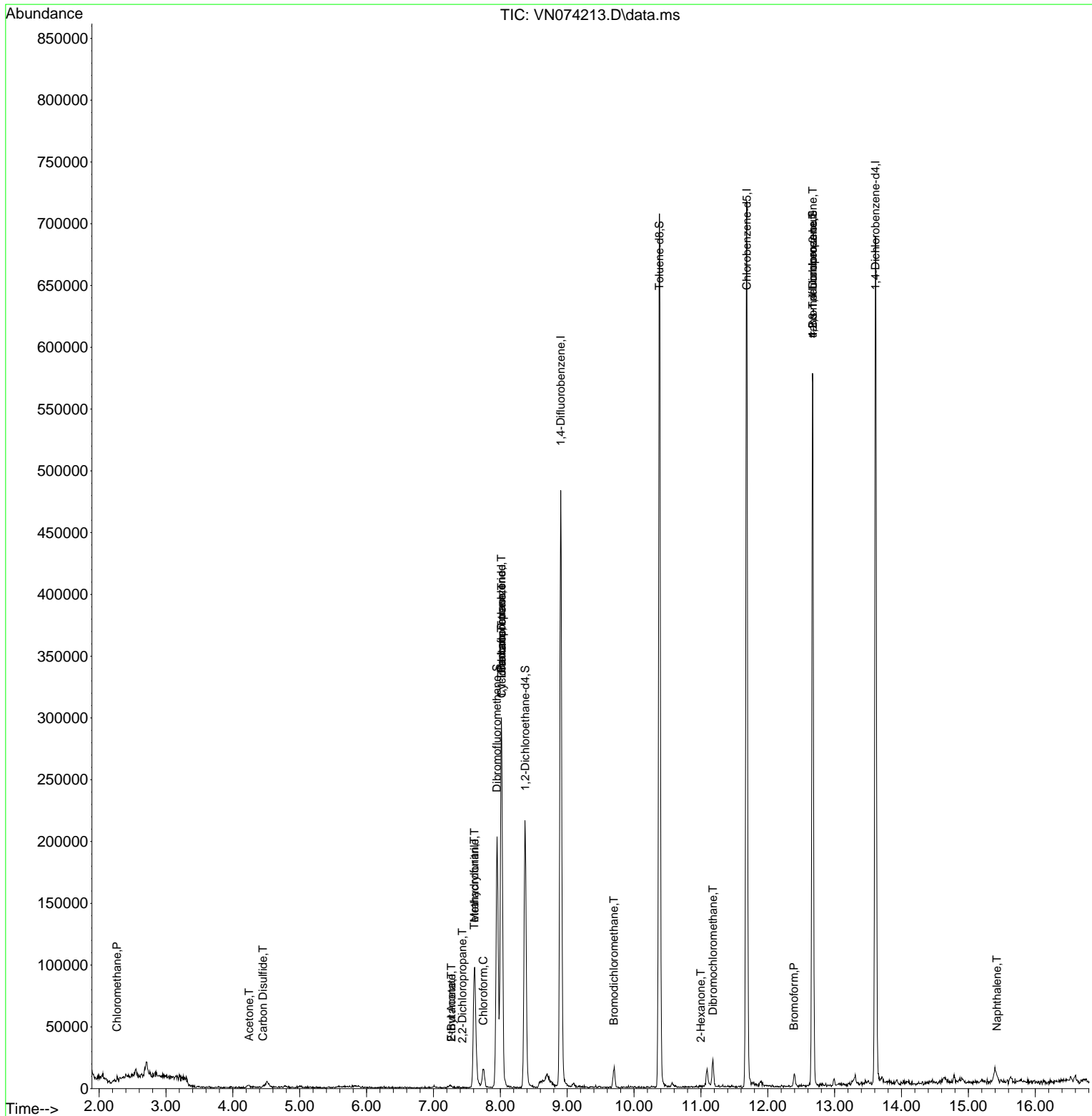
Internal Standards						
1) Pentafluorobenzene	8.016	168	214190	50.000	ug/l	0.00
34) 1,4-Difluorobenzene	8.904	114	392477	50.000	ug/l	0.00
63) Chlorobenzene-d5	11.686	117	381707	50.000	ug/l	0.00
72) 1,4-Dichlorobenzene-d4	13.610	152	169356	50.000	ug/l	0.00
System Monitoring Compounds						
33) 1,2-Dichloroethane-d4	8.375	65	166185	50.016	ug/l	0.00
Spiked Amount	50.000	Range 74 - 125	Recovery	=	100.040%	
35) Dibromofluoromethane	7.951	113	138672	54.298	ug/l	0.00
Spiked Amount	50.000	Range 75 - 124	Recovery	=	108.600%	
50) Toluene-d8	10.380	98	456759	45.414	ug/l	0.00
Spiked Amount	50.000	Range 86 - 113	Recovery	=	90.820%	
62) 4-Bromofluorobenzene	12.674	95	181975	59.496	ug/l	0.00
Spiked Amount	50.000	Range 83 - 123	Recovery	=	119.000%	
Target Compounds						
						Qvalue
3) Chloromethane	2.269	50	1740	0.557	ug/l #	78
6) Chloroethane	2.957	64	462	Below Cal	#	42
11) Tert butyl alcohol	5.293	59	54	Below Cal	#	72
16) Acetone	4.246	43	3173	1.429	ug/l #	64
17) Carbon Disulfide	4.451	76	2436	0.341	ug/l #	75
18) Methyl Acetate	4.775	43	1674	Below Cal	#	48
20) Methylene Chloride	5.004	84	913	Below Cal	#	53
25) 2-Butanone	7.269	43	1685	0.474	ug/l #	45
26) 2,2-Dichloropropane	7.434	77	54	0.283	ug/l #	53
28) Bromochloromethane	7.628	49	81	Below Cal	#	8
29) Tetrahydrofuran	7.610	42	86091	38.061	ug/l #	81
30) Chloroform	7.745	83	14300	2.492	ug/l	92
31) Cyclohexane	8.022	56	6131	1.117	ug/l #	65
36) 1,1-Dichloropropene	8.022	75	20782	5.015	ug/l #	47
37) Ethyl Acetate	7.269	43	1685	0.243	ug/l #	67
38) Carbon Tetrachloride	8.016	117	22937	6.095	ug/l #	17
41) Methacrylonitrile	7.616	41	49494	15.472	ug/l #	36
47) Bromodichloromethane	9.698	83	10207	2.220	ug/l #	96
59) 2-Hexanone	10.998	43	1541	0.300	ug/l #	21
60) Dibromochloromethane	11.180	129	9937	3.198	ug/l	99
71) Bromoform	12.392	173	4877	1.886	ug/l #	90
76) 1,2,3-Trichloropropane	12.674	75	108319	25.802	ug/l #	1
81) trans-1,4-Dichloro-2-b...	12.674	75	108319	66.388	ug/l #	10
95) Naphthalene	15.427	128	3133	1.389	ug/l #	87

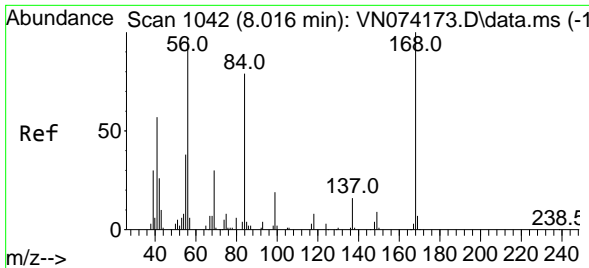
(#) = qualifier out of range (m) = manual integration (+) = signals summed

Data Path : Z:\voasrv\HPCHEM1\MSVOA_N\Data\VN083122\
 Data File : VN074213.D
 Acq On : 31 Aug 2022 14:45
 Operator : JC\MD
 Sample : N4350-01
 Misc : 5.0mL/MSVOA_N/WATER
 ALS Vial : 12 Sample Multiplier: 1

Instrument :
 MSVOA_N
 ClientSampleId :

Quant Time: Sep 01 00:25:20 2022
 Quant Method : Z:\voasrv\HPCHEM1\MSVOA_N\methods\82N083022W.M
 Quant Title : SW846 8260
 QLast Update : Wed Aug 31 07:02:40 2022
 Response via : Initial Calibration

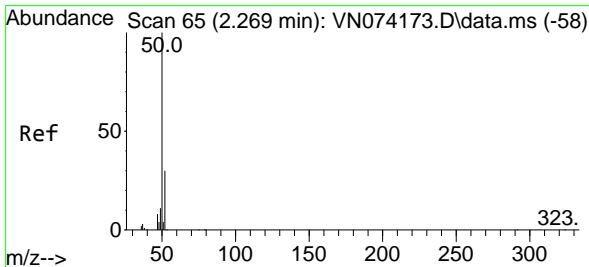
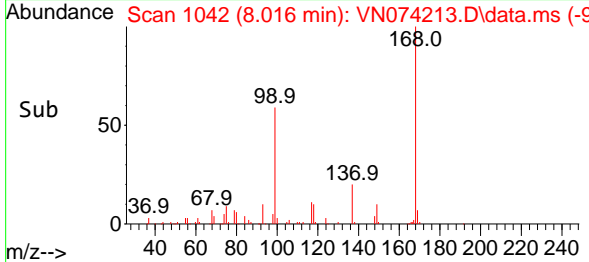
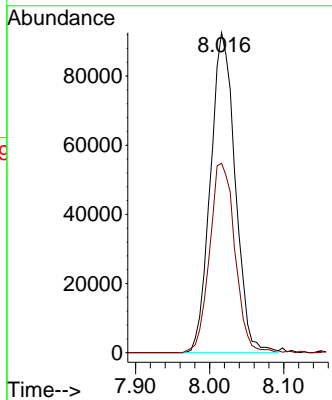
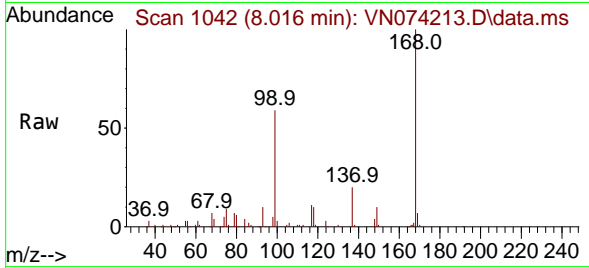




#1
 Pentafluorobenzene
 Concen: 50.000 ug/l
 RT: 8.016 min Scan# 1042
 Delta R.T. -0.000 min
 Lab File: VN074213.D
 Acq: 31 Aug 2022 14:45

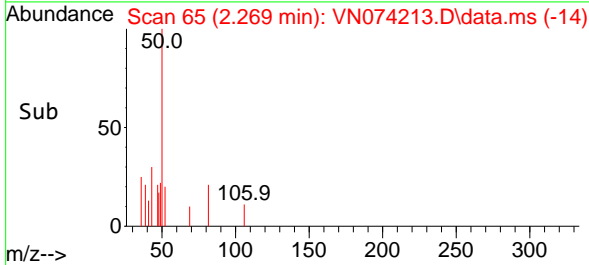
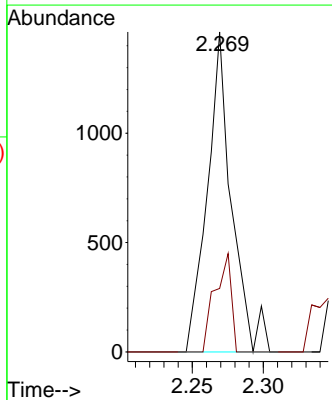
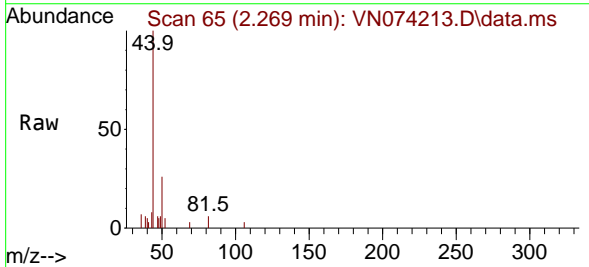
Instrument : MSVOA_N
 ClientSampleId :

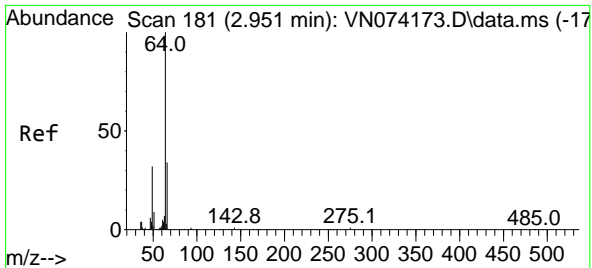
Tgt Ion:168 Resp: 214190
 Ion Ratio Lower Upper
 168 100
 99 59.2 42.3 63.5



#3
 Chloromethane
 Concen: 0.557 ug/l
 RT: 2.269 min Scan# 65
 Delta R.T. 0.000 min
 Lab File: VN074213.D
 Acq: 31 Aug 2022 14:45

Tgt Ion: 50 Resp: 1740
 Ion Ratio Lower Upper
 50 100
 52 19.8 25.7 38.5#

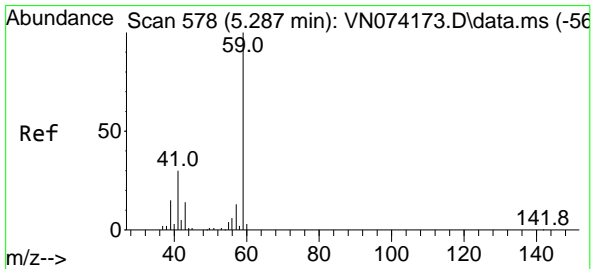
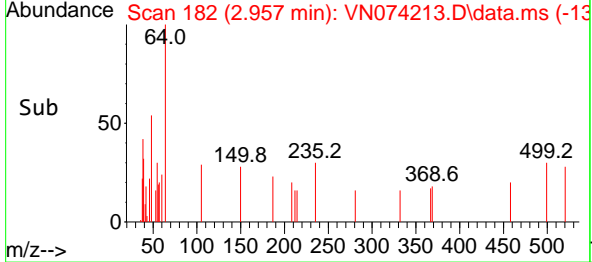
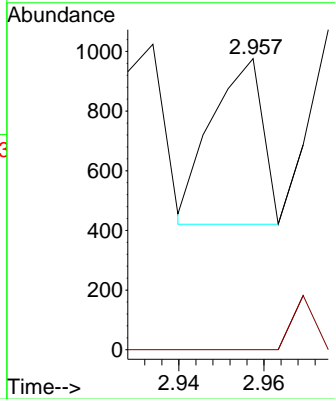
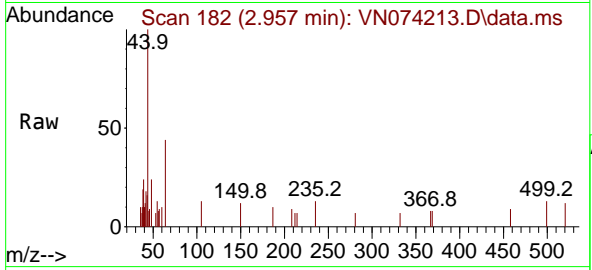




#6
 Chloroethane
 Concen: Below Cal
 RT: 2.957 min Scan# 11
 Delta R.T. 0.006 min
 Lab File: VN074213.D
 Acq: 31 Aug 2022 14:45

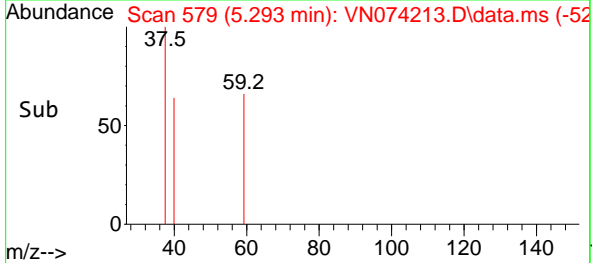
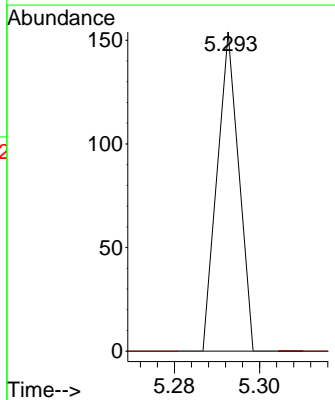
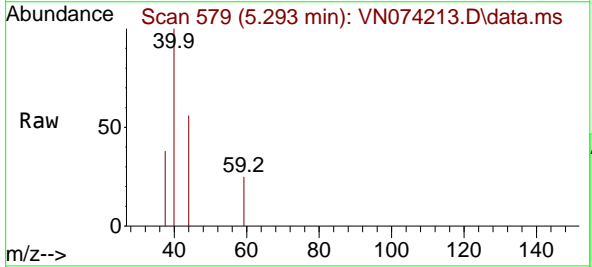
Instrument : MSVOA_N
 ClientSampleId :

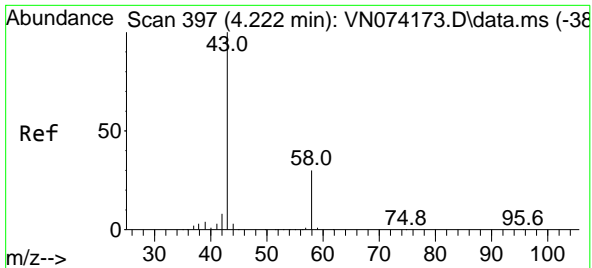
Tgt Ion: 64 Resp: 462
 Ion Ratio Lower Upper
 64 100
 66 0.0 26.2 39.4#



#11
 Tert butyl alcohol
 Concen: Below Cal
 RT: 5.293 min Scan# 579
 Delta R.T. 0.006 min
 Lab File: VN074213.D
 Acq: 31 Aug 2022 14:45

Tgt Ion: 59 Resp: 54
 Ion Ratio Lower Upper
 59 100
 57 0.0 8.3 12.5#

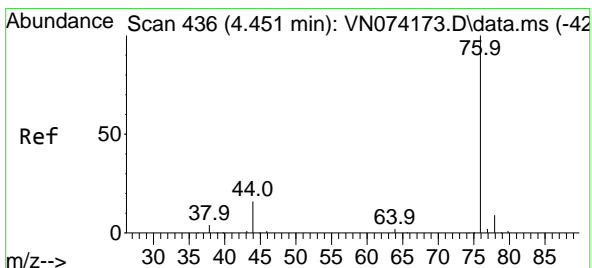
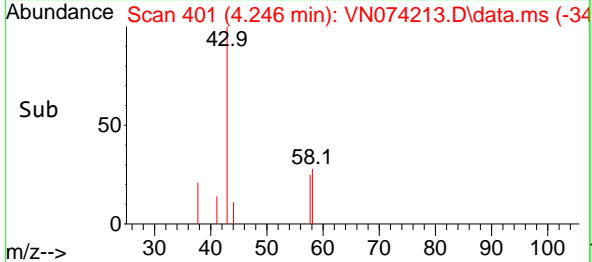
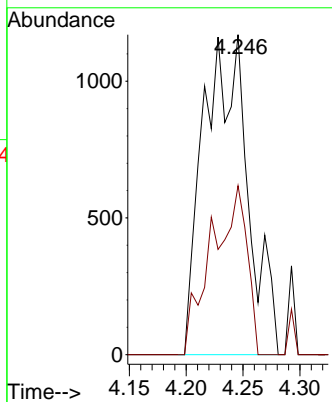
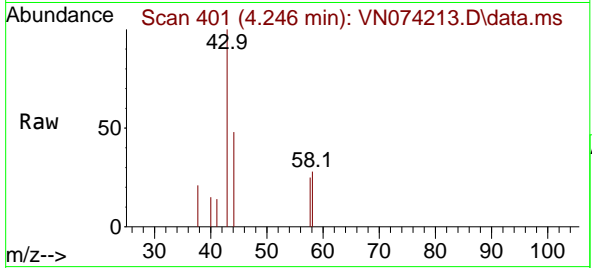




#16
 Acetone
 Concen: 1.429 ug/l
 RT: 4.246 min Scan# 401
 Delta R.T. 0.024 min
 Lab File: VN074213.D
 Acq: 31 Aug 2022 14:45

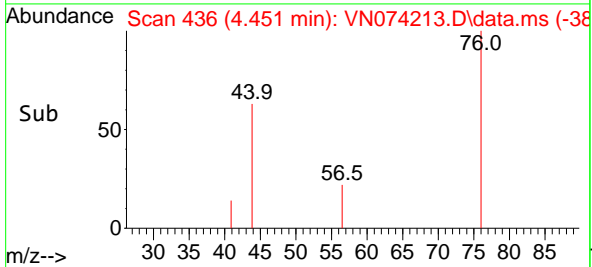
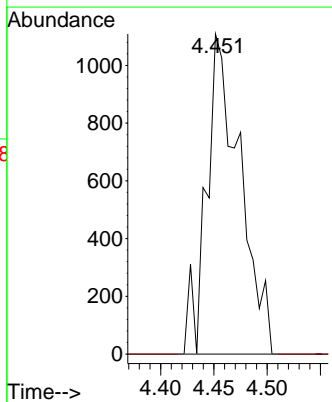
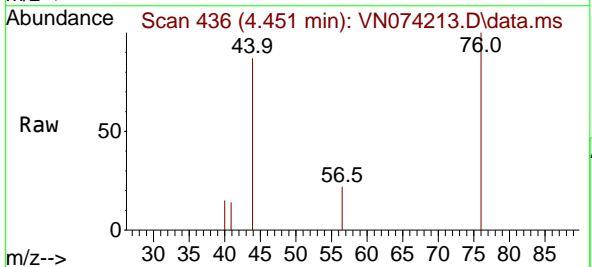
Instrument : MSVOA_N
 ClientSampleId :

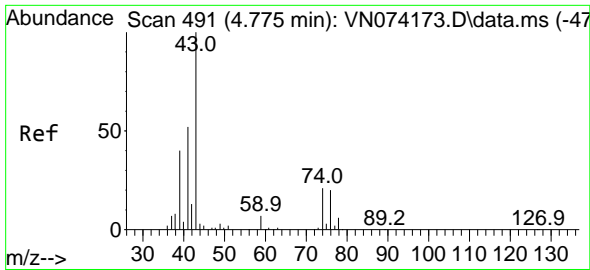
Tgt Ion: 43 Resp: 3173
 Ion Ratio Lower Upper
 43 100
 58 52.8 26.0 39.0#



#17
 Carbon Disulfide
 Concen: 0.341 ug/l
 RT: 4.451 min Scan# 436
 Delta R.T. 0.000 min
 Lab File: VN074213.D
 Acq: 31 Aug 2022 14:45

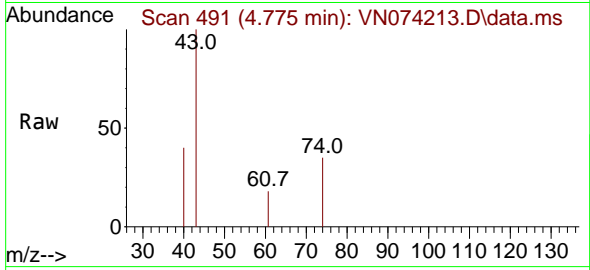
Tgt Ion: 76 Resp: 2436
 Ion Ratio Lower Upper
 76 100
 78 0.0 7.2 10.8#



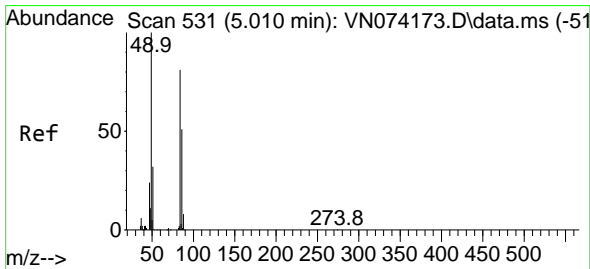
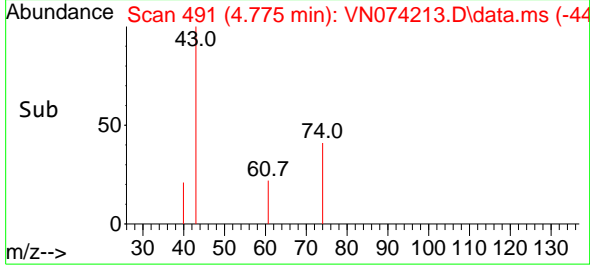
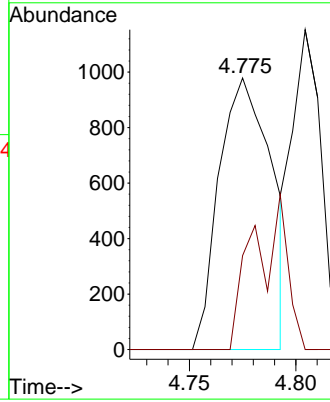


#18
 Methyl Acetate
 Concen: Below Cal
 RT: 4.775 min Scan# 491
 Delta R.T. -0.000 min
 Lab File: VN074213.D
 Acq: 31 Aug 2022 14:45

Instrument : MSVOA_N
 ClientSampleId :

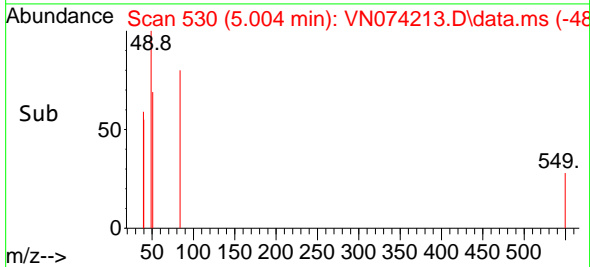
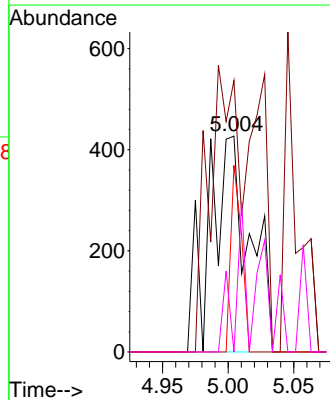
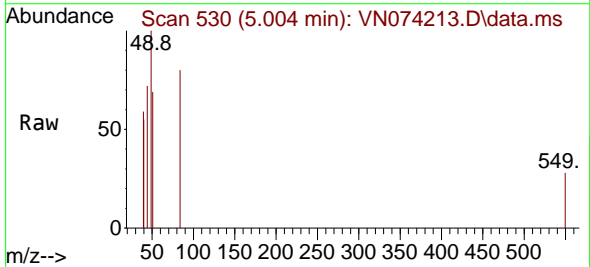


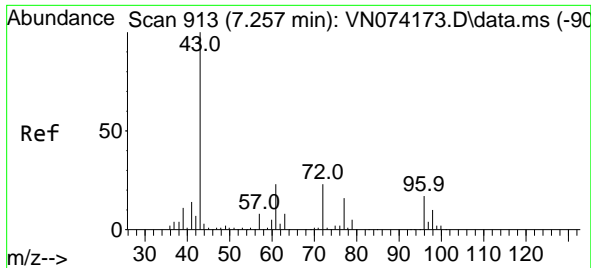
Tgt Ion: 43 Resp: 1674
 Ion Ratio Lower Upper
 43 100
 74 0.0 21.6 32.4#



#20
 Methylene Chloride
 Concen: Below Cal
 RT: 5.004 min Scan# 530
 Delta R.T. -0.006 min
 Lab File: VN074213.D
 Acq: 31 Aug 2022 14:45

Tgt Ion: 84 Resp: 913
 Ion Ratio Lower Upper
 84 100
 49 125.8 88.3 132.5
 51 86.4 28.2 42.2#
 86 0.0 50.6 76.0#

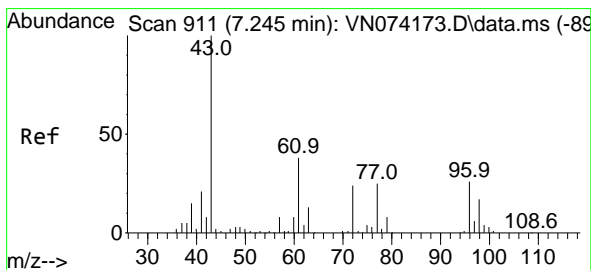
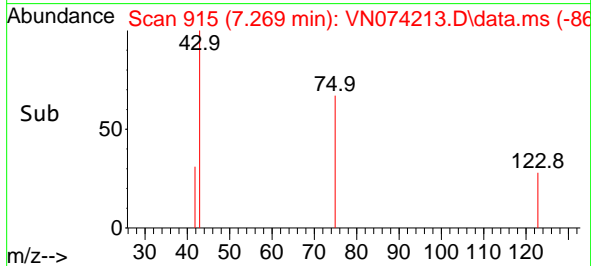
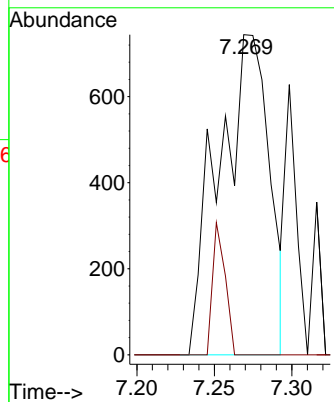
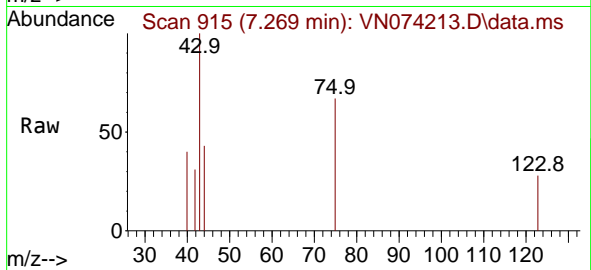




#25
 2-Butanone
 Concen: 0.474 ug/l
 RT: 7.269 min Scan# 915
 Delta R.T. 0.012 min
 Lab File: VN074213.D
 Acq: 31 Aug 2022 14:45

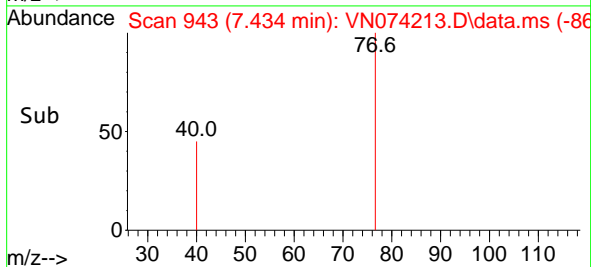
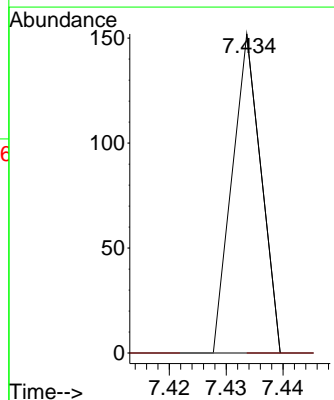
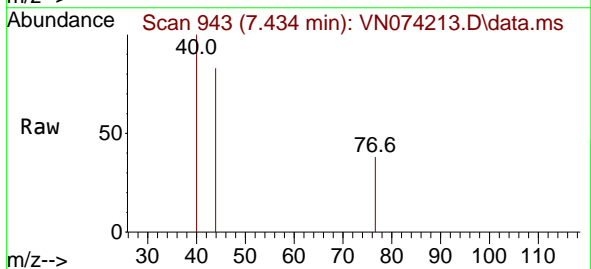
Instrument :
 MSVOA_N
 ClientSampleId :

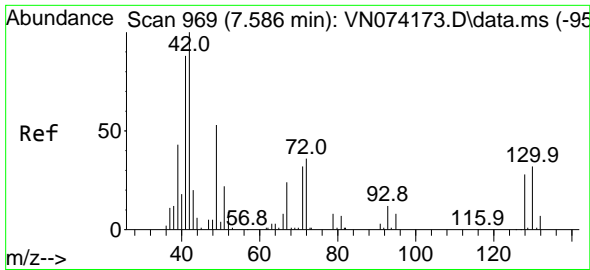
Tgt Ion: 43 Resp: 1685
 Ion Ratio Lower Upper
 43 100
 72 0.0 23.7 35.5#



#26
 2,2-Dichloropropane
 Concen: 0.283 ug/l
 RT: 7.434 min Scan# 943
 Delta R.T. 0.189 min
 Lab File: VN074213.D
 Acq: 31 Aug 2022 14:45

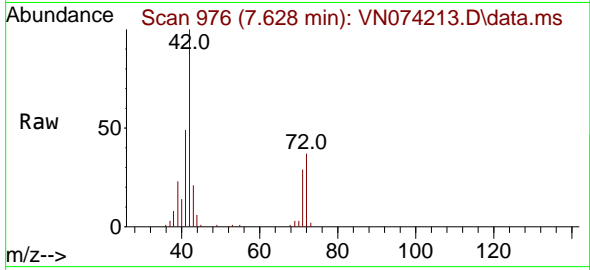
Tgt Ion: 77 Resp: 54
 Ion Ratio Lower Upper
 77 100
 97 0.0 11.4 34.2#



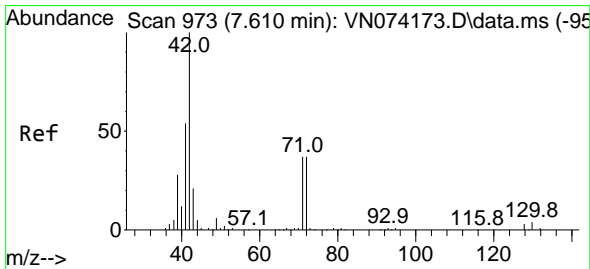
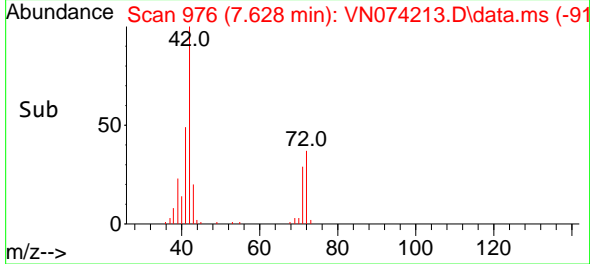
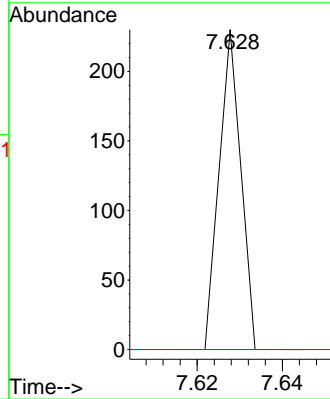


#28
 Bromochloromethane
 Concen: Below Cal
 RT: 7.628 min Scan# 91
 Delta R.T. 0.042 min
 Lab File: VN074213.D
 Acq: 31 Aug 2022 14:45

Instrument :
 MSVOA_N
 ClientSampleId :

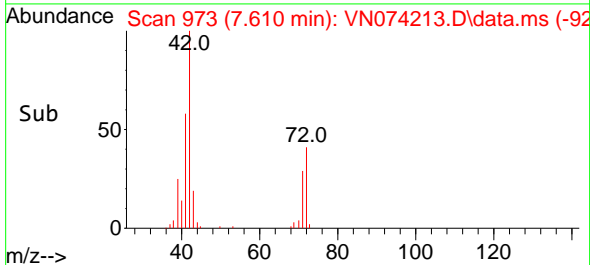
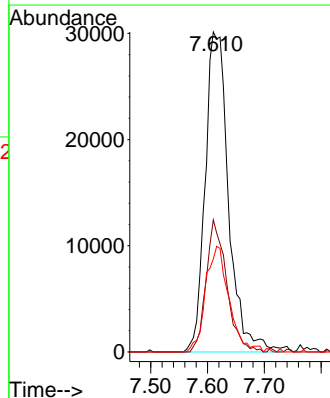
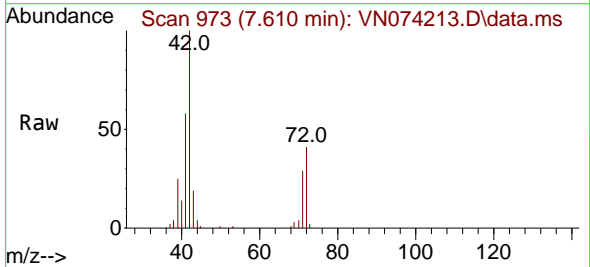


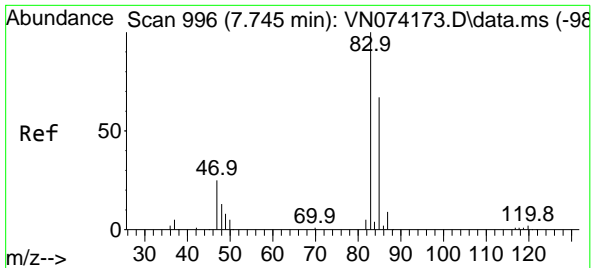
Tgt Ion: 49 Resp: 81
 Ion Ratio Lower Upper
 49 100
 129 0.0 0.0 4.6
 130 0.0 69.7 104.5#



#29
 Tetrahydrofuran
 Concen: 38.061 ug/l
 RT: 7.610 min Scan# 973
 Delta R.T. 0.000 min
 Lab File: VN074213.D
 Acq: 31 Aug 2022 14:45

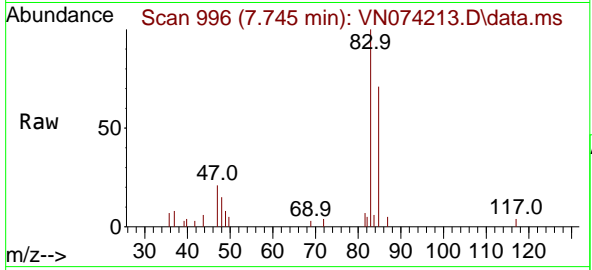
Tgt Ion: 42 Resp: 86091
 Ion Ratio Lower Upper
 42 100
 72 36.1 39.7 59.5#
 71 33.2 36.6 55.0#



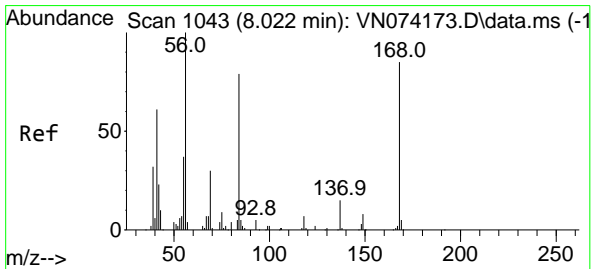
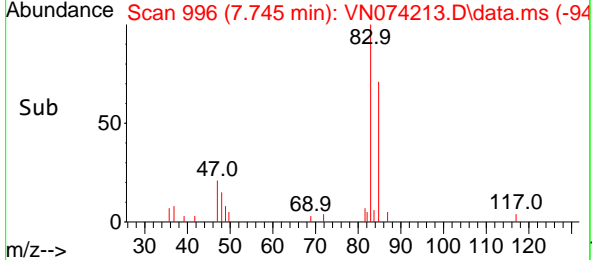
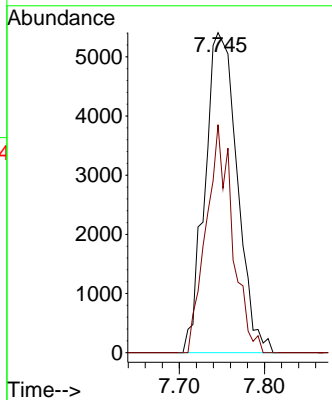


#30
 Chloroform
 Concen: 2.492 ug/l
 RT: 7.745 min Scan# 996
 Delta R.T. 0.000 min
 Lab File: VN074213.D
 Acq: 31 Aug 2022 14:45

Instrument : MSVOA_N
 Client Sample Id :

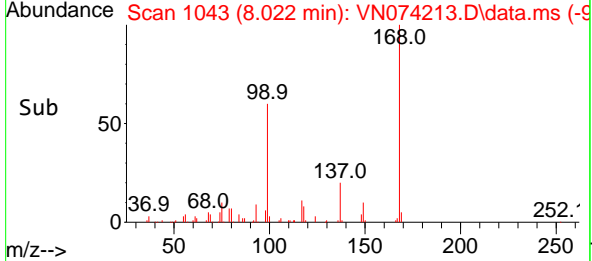
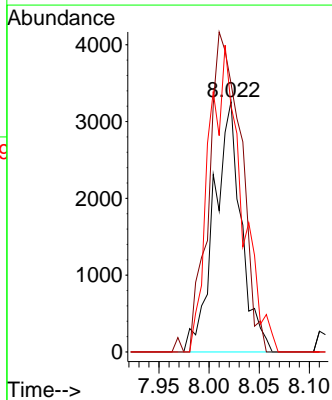
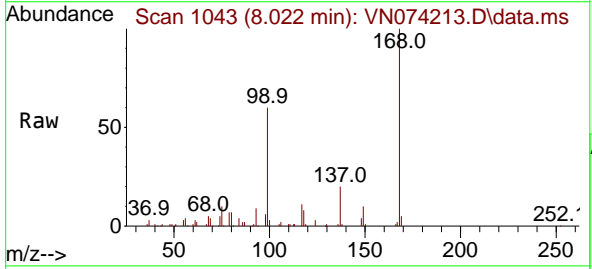


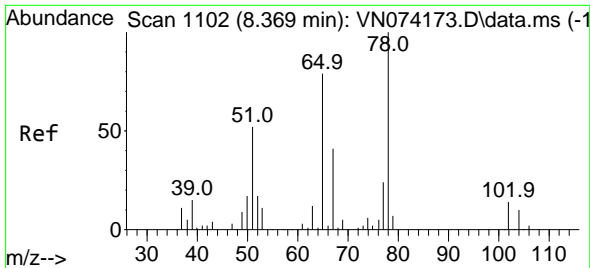
Tgt Ion: 83 Resp: 14300
 Ion Ratio Lower Upper
 83 100
 85 71.3 51.8 77.8



#31
 Cyclohexane
 Concen: 1.117 ug/l
 RT: 8.022 min Scan# 1043
 Delta R.T. 0.000 min
 Lab File: VN074213.D
 Acq: 31 Aug 2022 14:45

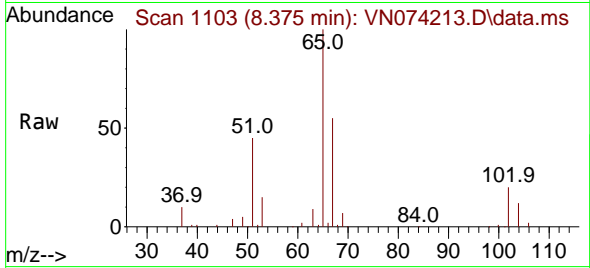
Tgt Ion: 56 Resp: 6131
 Ion Ratio Lower Upper
 56 100
 69 107.4 27.8 41.8#
 84 98.4 76.9 115.3



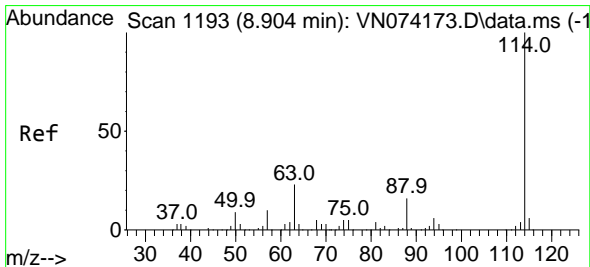
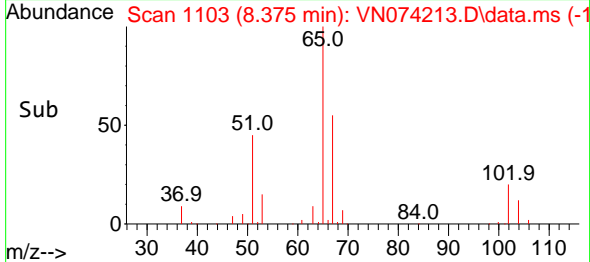
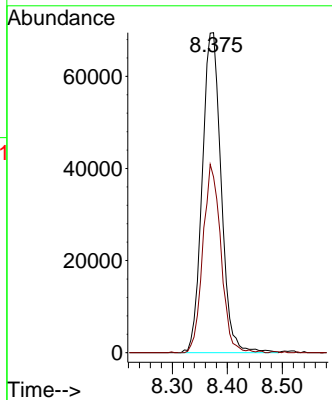


#33
 1,2-Dichloroethane-d4
 Concen: 50.016 ug/l
 RT: 8.375 min Scan# 1103
 Delta R.T. 0.006 min
 Lab File: VN074213.D
 Acq: 31 Aug 2022 14:45

Instrument :
 MSVOA_N
 ClientSampleId :

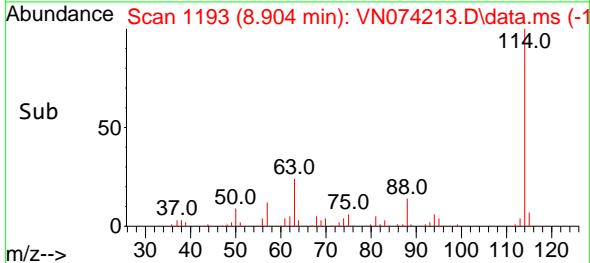
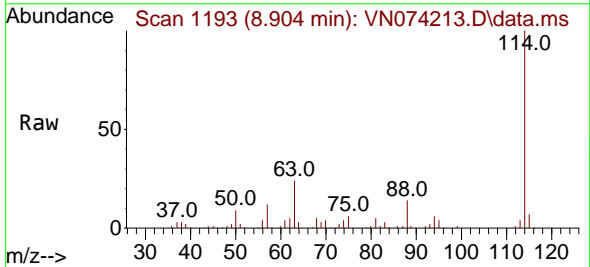
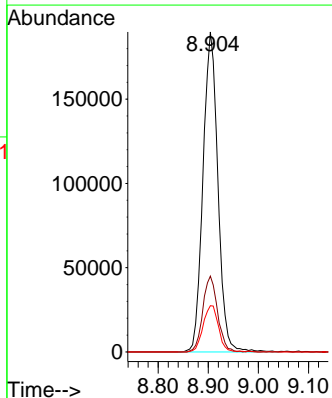


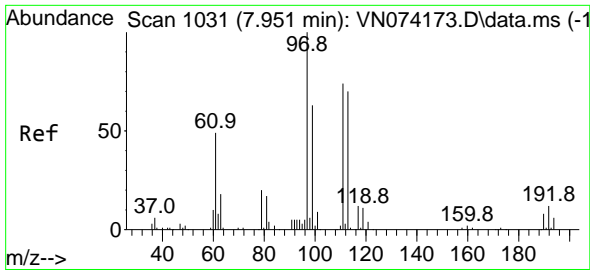
Tgt Ion: 65 Resp: 166185
 Ion Ratio Lower Upper
 65 100
 67 55.9 0.0 104.8



#34
 1,4-Difluorobenzene
 Concen: 50.000 ug/l
 RT: 8.904 min Scan# 1193
 Delta R.T. 0.000 min
 Lab File: VN074213.D
 Acq: 31 Aug 2022 14:45

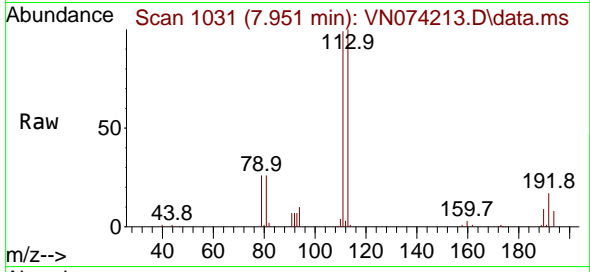
Tgt Ion:114 Resp: 392477
 Ion Ratio Lower Upper
 114 100
 63 23.7 0.0 40.0
 88 14.5 0.0 32.6



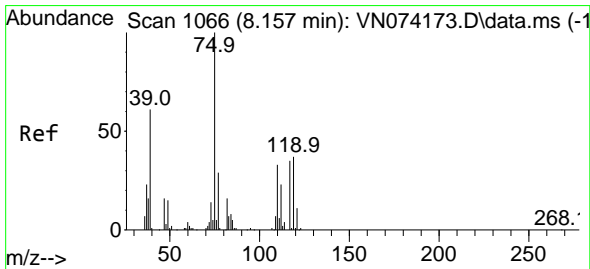
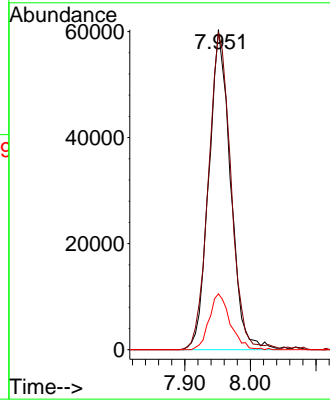
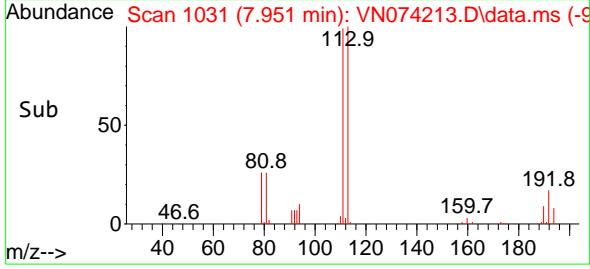


#35
 Dibromofluoromethane
 Concen: 54.298 ug/l
 RT: 7.951 min Scan# 1043
 Delta R.T. 0.000 min
 Lab File: VN074213.D
 Acq: 31 Aug 2022 14:45

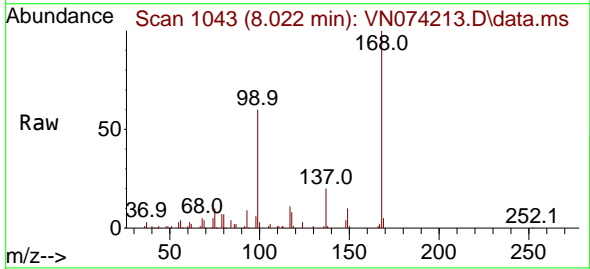
Instrument :
 MSVOA_N
 ClientSampleId :



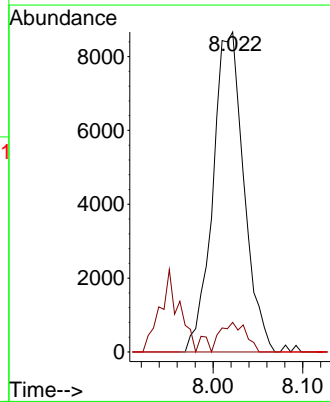
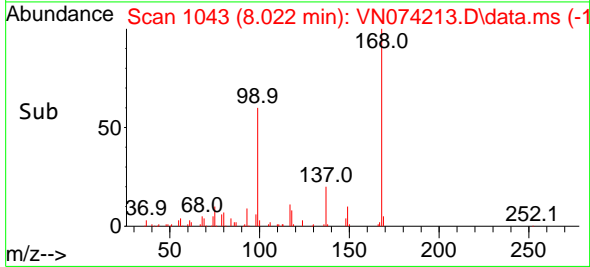
Tgt Ion:113 Resp: 138672
 Ion Ratio Lower Upper
 113 100
 111 102.7 81.4 122.0
 192 17.0 17.0 25.6#

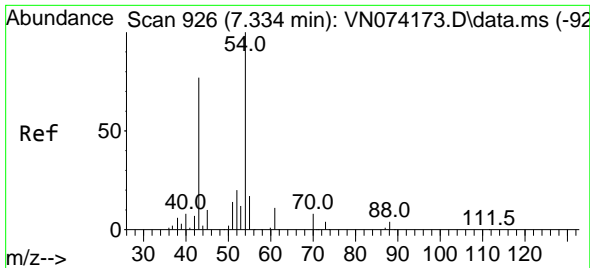


#36
 1,1-Dichloropropene
 Concen: 5.015 ug/l
 RT: 8.022 min Scan# 1043
 Delta R.T. -0.135 min
 Lab File: VN074213.D
 Acq: 31 Aug 2022 14:45



Tgt Ion: 75 Resp: 20782
 Ion Ratio Lower Upper
 75 100
 110 7.6 18.3 54.8#
 77 0.0 25.1 37.7#

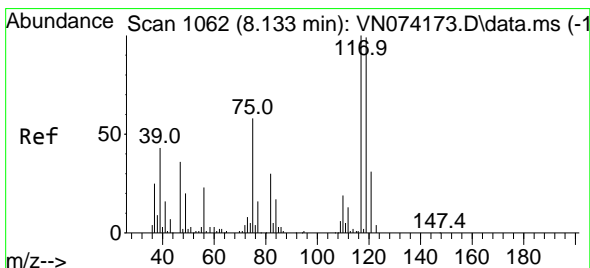
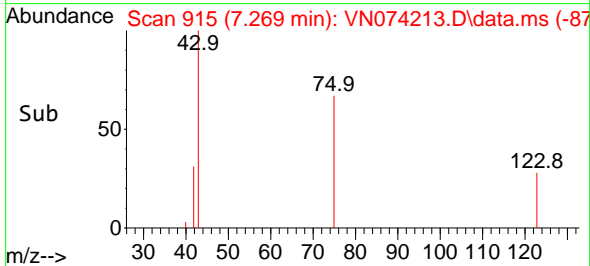
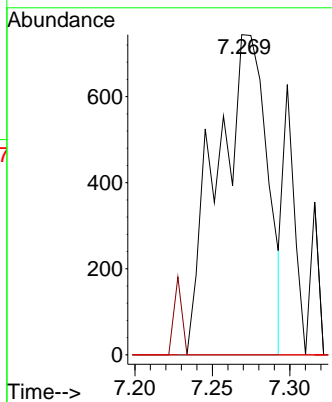
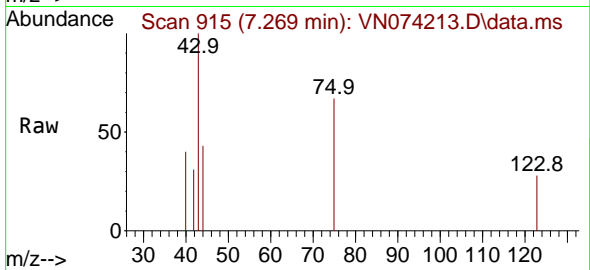




#37
 Ethyl Acetate
 Concen: 0.243 ug/l
 RT: 7.269 min Scan# 915
 Delta R.T. -0.065 min
 Lab File: VN074213.D
 Acq: 31 Aug 2022 14:45

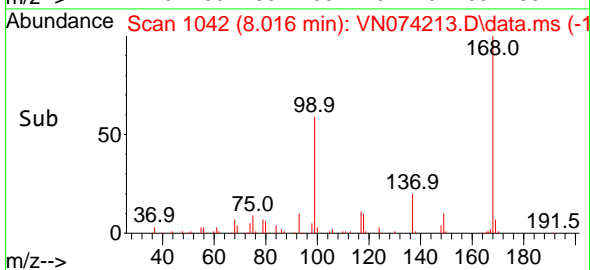
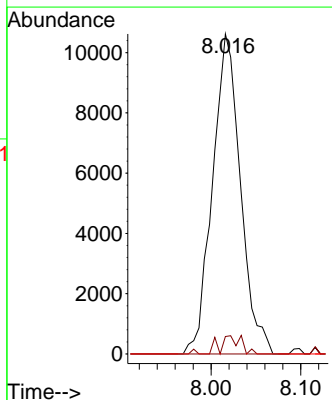
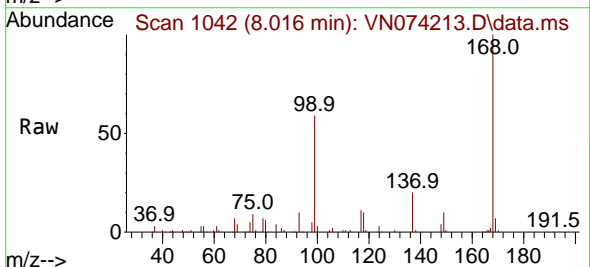
Instrument : MSVOA_N
 ClientSampleId :

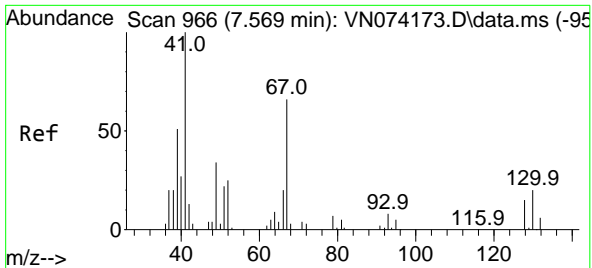
Tgt Ion	Resp	Lower	Upper
43	1685		
43	100		
61	0.0	11.8	17.6#
70	0.0	9.3	13.9#



#38
 Carbon Tetrachloride
 Concen: 6.095 ug/l
 RT: 8.016 min Scan# 1042
 Delta R.T. -0.117 min
 Lab File: VN074213.D
 Acq: 31 Aug 2022 14:45

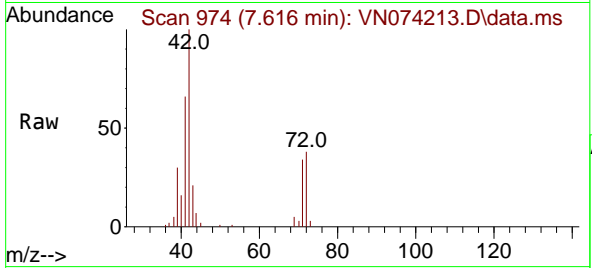
Tgt Ion	Resp	Lower	Upper
117	22937		
117	100		
119	5.4	75.8	113.8#
121	0.0	24.6	37.0#





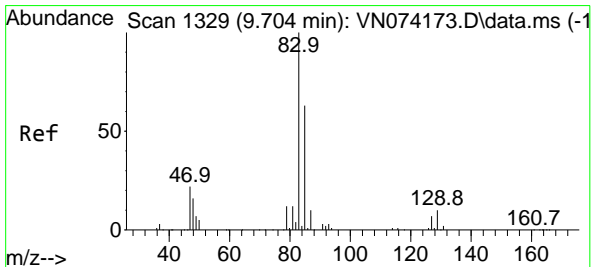
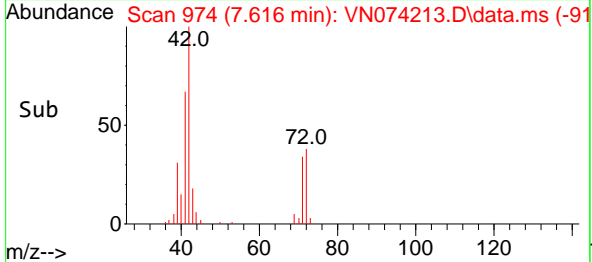
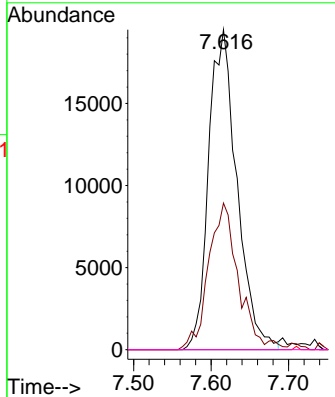
#41
 Methacrylonitrile
 Concen: 15.472 ug/l
 RT: 7.616 min Scan# 91
 Delta R.T. 0.047 min
 Lab File: VN074213.D
 Acq: 31 Aug 2022 14:45

Instrument :
 MSVOA_N
 ClientSampleId :



Tgt Ion: 41 Resp: 49494

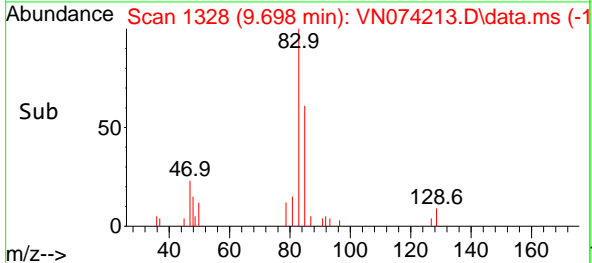
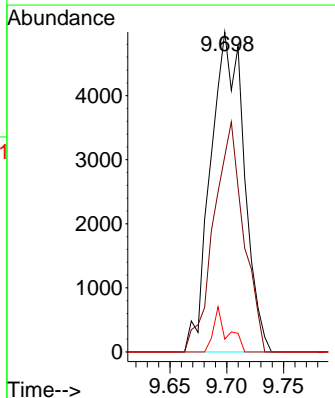
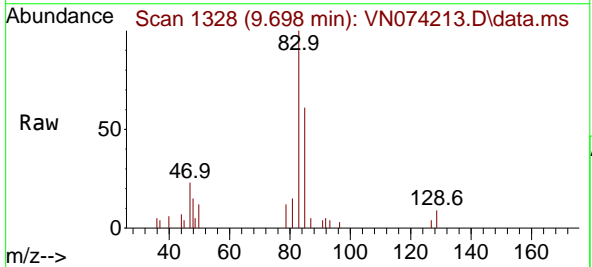
Ion	Ratio	Lower	Upper
41	100		
39	48.5	48.6	73.0#
67	0.0	73.4	110.2#
52	0.0	27.7	41.5#

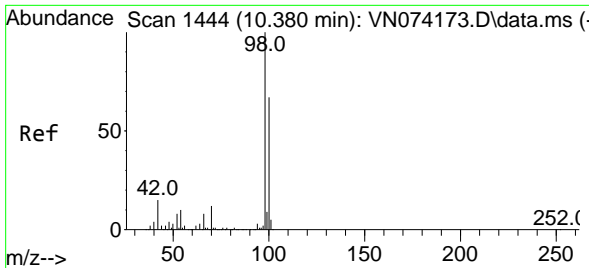


#47
 Bromodichloromethane
 Concen: 2.220 ug/l
 RT: 9.698 min Scan# 1328
 Delta R.T. -0.006 min
 Lab File: VN074213.D
 Acq: 31 Aug 2022 14:45

Tgt Ion: 83 Resp: 10207

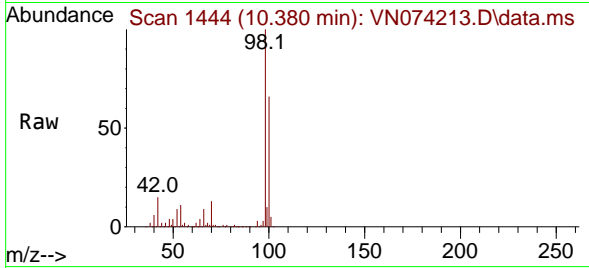
Ion	Ratio	Lower	Upper
83	100		
85	61.2	50.5	75.7
127	4.0	6.8	10.2#



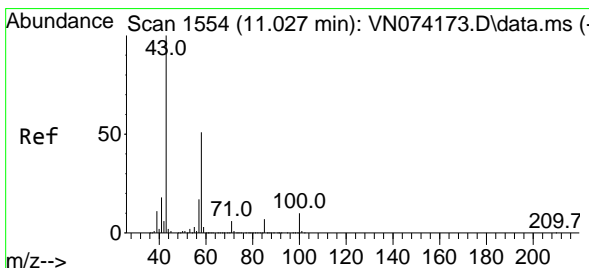
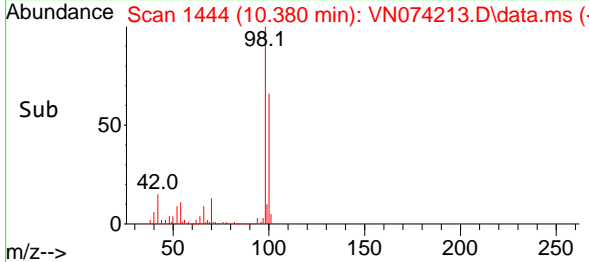
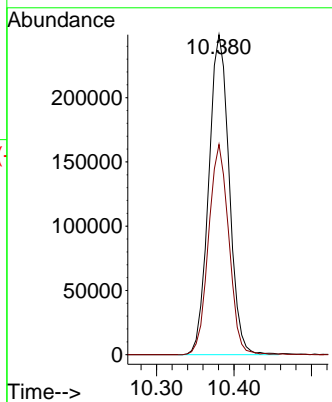


#50
 Toluene-d8
 Concen: 45.414 ug/l
 RT: 10.380 min Scan# 1444
 Delta R.T. 0.000 min
 Lab File: VN074213.D
 Acq: 31 Aug 2022 14:45

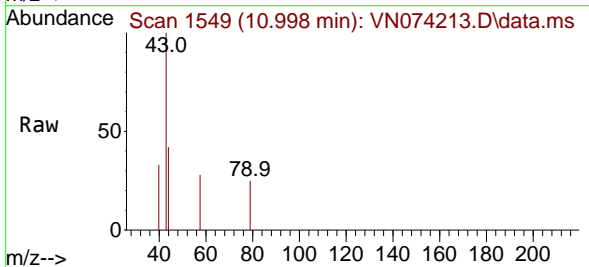
Instrument :
 MSVOA_N
 ClientSampleId :



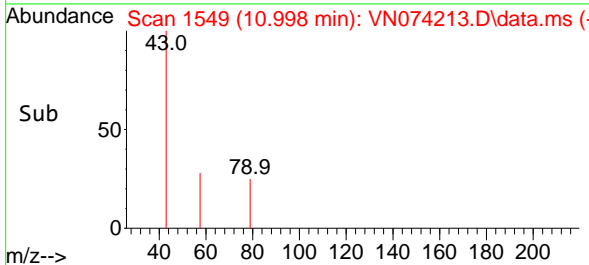
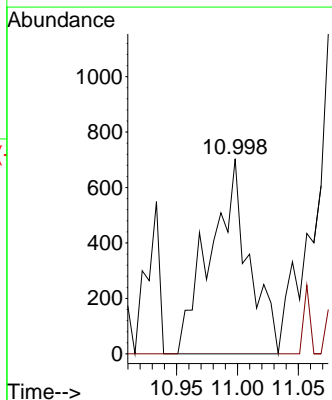
Tgt Ion: 98 Resp: 456759
 Ion Ratio Lower Upper
 98 100
 100 64.9 52.6 78.8

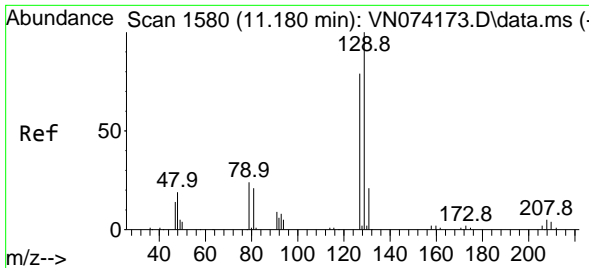


#59
 2-Hexanone
 Concen: 0.300 ug/l
 RT: 10.998 min Scan# 1549
 Delta R.T. -0.029 min
 Lab File: VN074213.D
 Acq: 31 Aug 2022 14:45



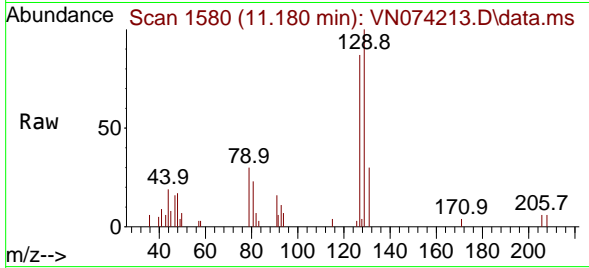
Tgt Ion: 43 Resp: 1541
 Ion Ratio Lower Upper
 43 100
 58 0.0 29.7 89.1#



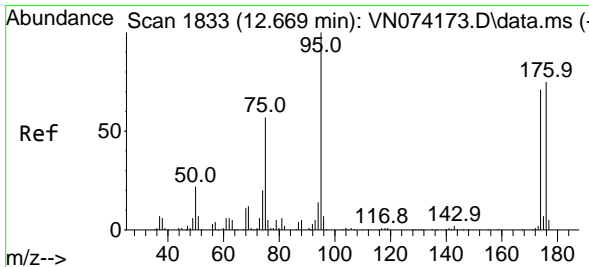
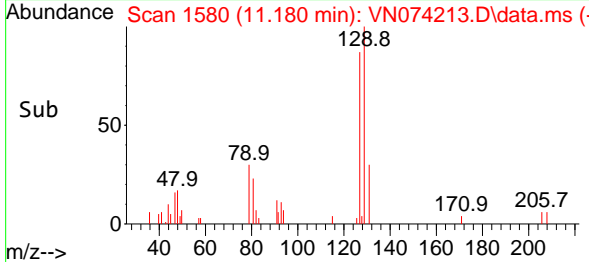
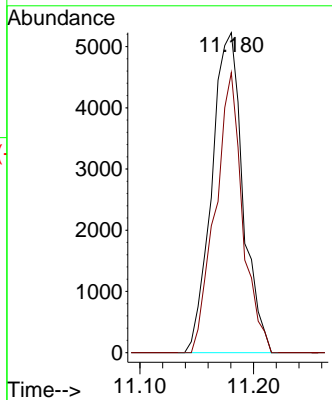


#60
 Dibromochloromethane
 Concen: 3.198 ug/l
 RT: 11.180 min Scan# 11180
 Delta R.T. 0.000 min
 Lab File: VN074213.D
 Acq: 31 Aug 2022 14:45

Instrument : MSVOA_N
 ClientSampleId :

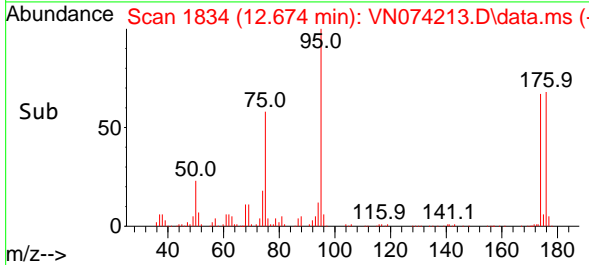
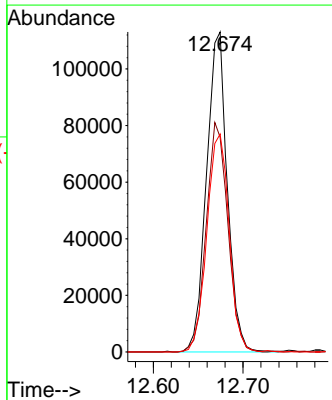
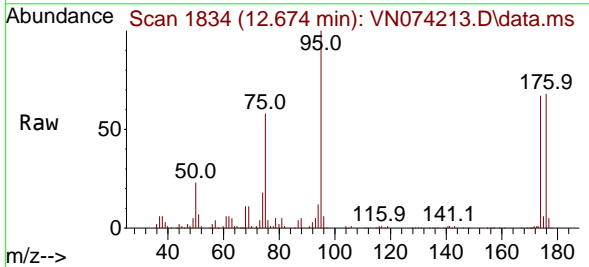


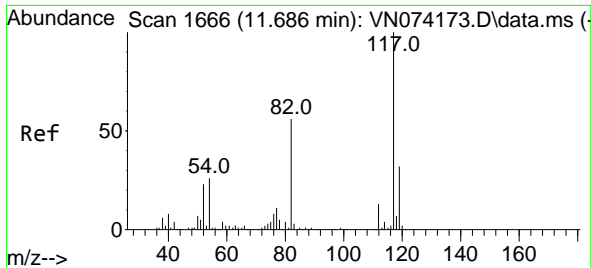
Tgt Ion:129 Resp: 9937
 Ion Ratio Lower Upper
 129 100
 127 76.8 38.8 116.4



#62
 4-Bromofluorobenzene
 Concen: 59.496 ug/l
 RT: 12.674 min Scan# 1834
 Delta R.T. 0.006 min
 Lab File: VN074213.D
 Acq: 31 Aug 2022 14:45

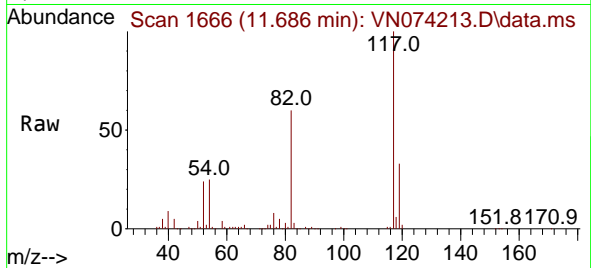
Tgt Ion: 95 Resp: 181975
 Ion Ratio Lower Upper
 95 100
 174 74.4 0.0 167.6
 176 72.9 0.0 163.4



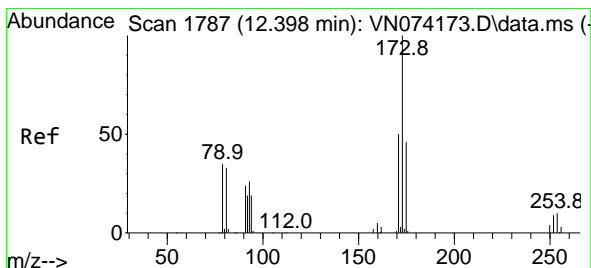
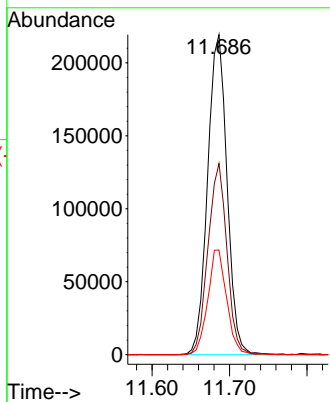
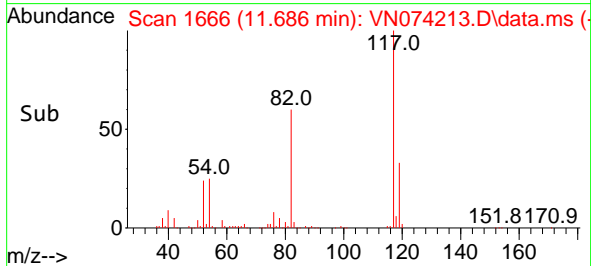


#63
 Chlorobenzene-d5
 Concen: 50.000 ug/l
 RT: 11.686 min Scan# 1170
 Delta R.T. 0.000 min
 Lab File: VN074213.D
 Acq: 31 Aug 2022 14:45

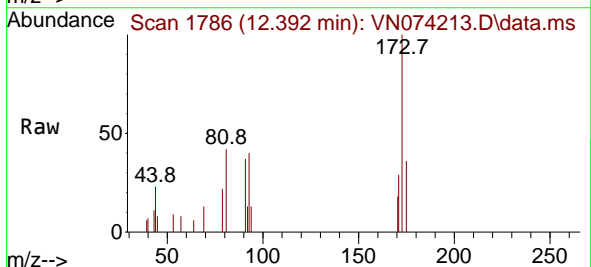
Instrument :
 MSVOA_N
 ClientSampleId :



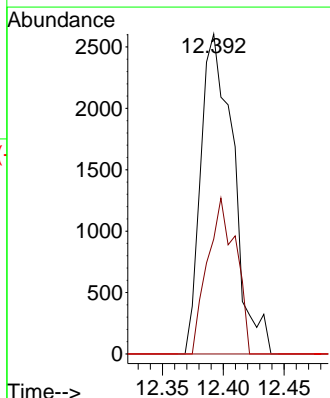
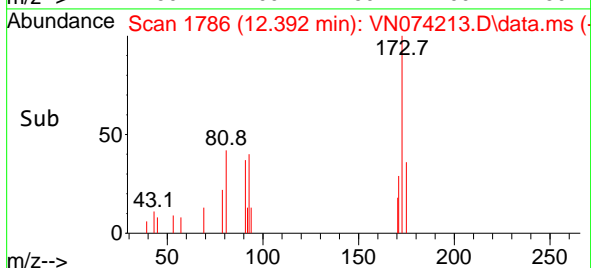
Tgt Ion:117 Resp: 381707
 Ion Ratio Lower Upper
 117 100
 82 59.7 44.2 66.2
 119 32.7 25.4 38.0

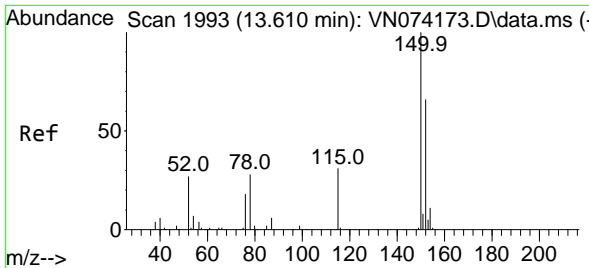


#71
 Bromoform
 Concen: 1.886 ug/l
 RT: 12.392 min Scan# 1786
 Delta R.T. -0.006 min
 Lab File: VN074213.D
 Acq: 31 Aug 2022 14:45



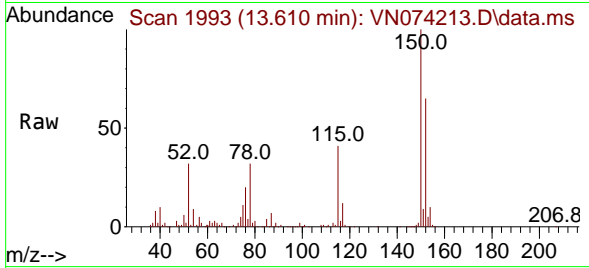
Tgt Ion:173 Resp: 4877
 Ion Ratio Lower Upper
 173 100
 175 42.2 24.6 73.6
 254 0.0 0.1 0.1#



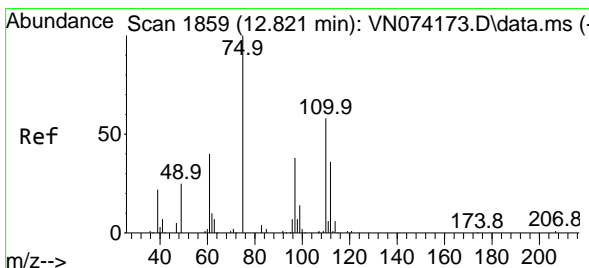
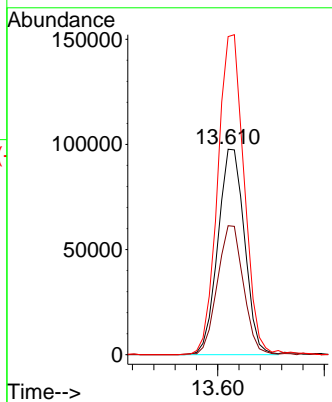
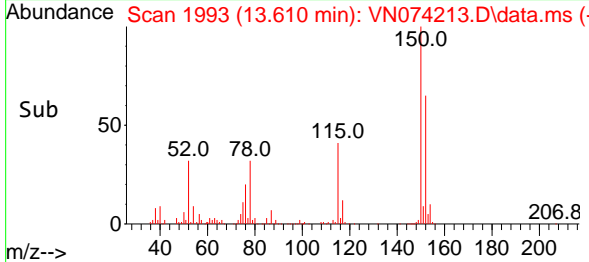


#72
 1,4-Dichlorobenzene-d4
 Concen: 50.000 ug/l
 RT: 13.610 min Scan# 1993
 Delta R.T. -0.000 min
 Lab File: VN074213.D
 Acq: 31 Aug 2022 14:45

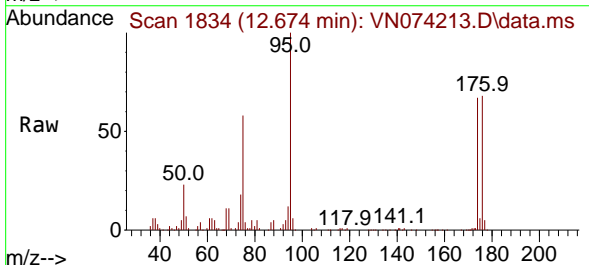
Instrument : MSVOA_N
 ClientSampleId :



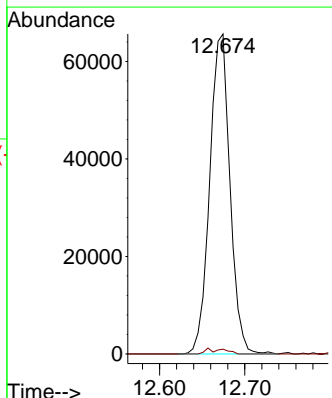
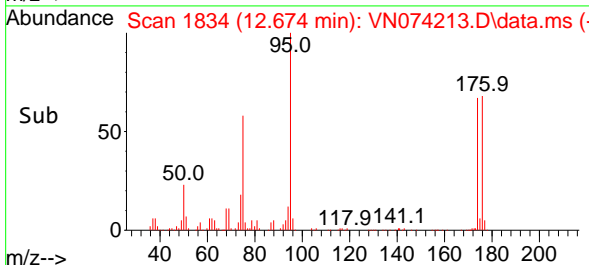
Tgt Ion:152 Resp: 169356
 Ion Ratio Lower Upper
 152 100
 115 61.8 28.9 86.7
 150 155.2 0.0 356.2

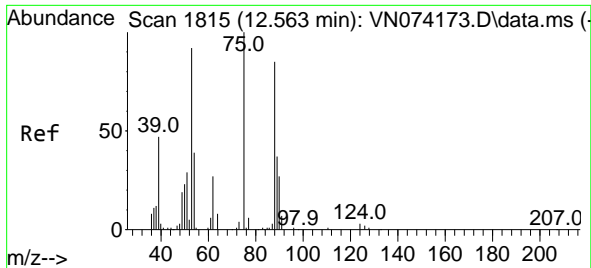


#76
 1,2,3-Trichloropropane
 Concen: 25.802 ug/l
 RT: 12.674 min Scan# 1834
 Delta R.T. -0.147 min
 Lab File: VN074213.D
 Acq: 31 Aug 2022 14:45



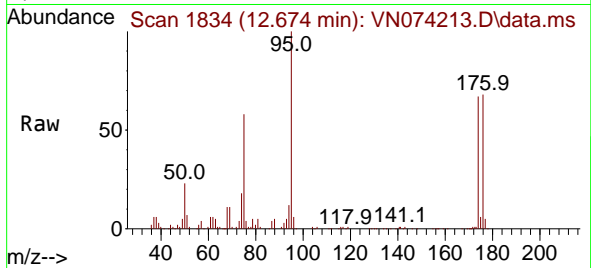
Tgt Ion: 75 Resp: 108319
 Ion Ratio Lower Upper
 75 100
 77 0.6 98.5 295.5#



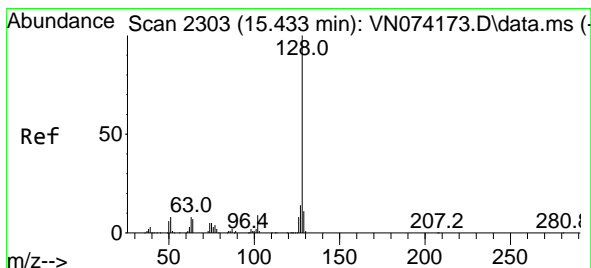
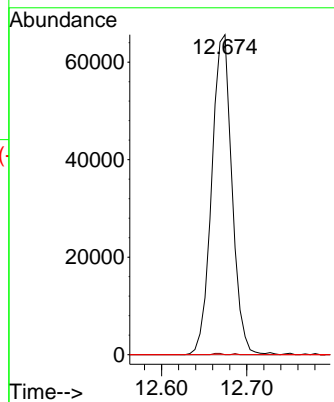
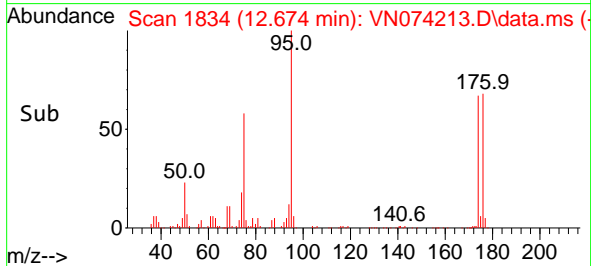


#81
 trans-1,4-Dichloro-2-butene
 Concen: 66.388 ug/l
 RT: 12.674 min Scan# 1815
 Delta R.T. 0.112 min
 Lab File: VN074213.D
 Acq: 31 Aug 2022 14:45

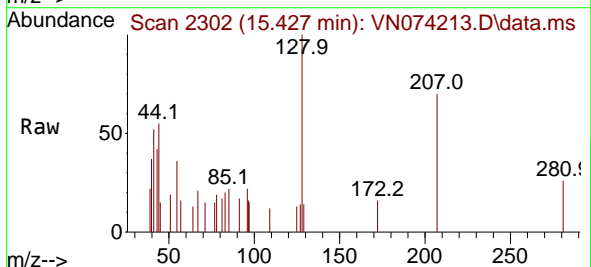
Instrument : MSVOA_N
 ClientSampleId :



Tgt Ion: 75 Resp: 108319
 Ion Ratio Lower Upper
 75 100
 53 0.1 78.0 117.0#
 89 0.0 37.2 55.8#



#95
 Naphthalene
 Concen: 1.389 ug/l
 RT: 15.427 min Scan# 2302
 Delta R.T. -0.006 min
 Lab File: VN074213.D
 Acq: 31 Aug 2022 14:45



Tgt Ion:128 Resp: 3133
 Ion Ratio Lower Upper
 128 100
 127 11.0 10.3 15.5
 129 2.3 8.6 13.0#

