

Data Path : Z:\VOASRV\HPCHEM1\MSVOA N\DATA\VN090220\  
 Data File : VN063198.D  
 Acq On : 2 Sep 2020 16:17  
 Operator : JC/MD  
 Sample : L3889-06  
 Misc : 5.00mL/MSVOA N/WATER  
 ALS Vial : 18 Sample Multiplier: 1

**Instrument :**  
 MSVOA\_N  
**ClientSampleId :**  
 BP-VPB181-DUP-20200831

Quant Time: Sep 03 02:29:10 2020  
 Quant Method : Z:\VOASRV\HPCHEM1\MSVOA\_N\METHODS\82N083120W.M  
 Quant Title : SW846 8260  
 QLast Update : Tue Sep 01 04:21:28 2020  
 Response via : Initial Calibration

Internal Standards	R.T.	QIon	Response	Conc	Units	Dev(Min)
1) Pentafluorobenzene	7.63	168	319730	50.00	ug/l	0.00
34) 1,4-Difluorobenzene	8.55	114	624581	50.00	ug/l	0.00
63) Chlorobenzene-d5	11.38	117	614279	50.00	ug/l	0.00
72) 1,4-Dichlorobenzene-d4	13.32	152	237276	50.00	ug/l	0.00

System Monitoring Compounds	R.T.	QIon	Response	Conc	Units	Dev(Min)
33) 1,2-Dichloroethane-d4	7.99	65	255950	48.97	ug/l	0.00
Spiked Amount				50.000		
Recovery						= 97.94%
35) Dibromofluoromethane	7.55	113	195447	48.78	ug/l	0.00
Spiked Amount				50.000		
Recovery						= 97.56%
50) Toluene-d8	10.06	98	779840	50.56	ug/l	0.00
Spiked Amount				50.000		
Recovery						= 101.12%
62) 4-Bromofluorobenzene	12.38	95	272969	50.60	ug/l	0.00
Spiked Amount				50.000		
Recovery						= 101.20%

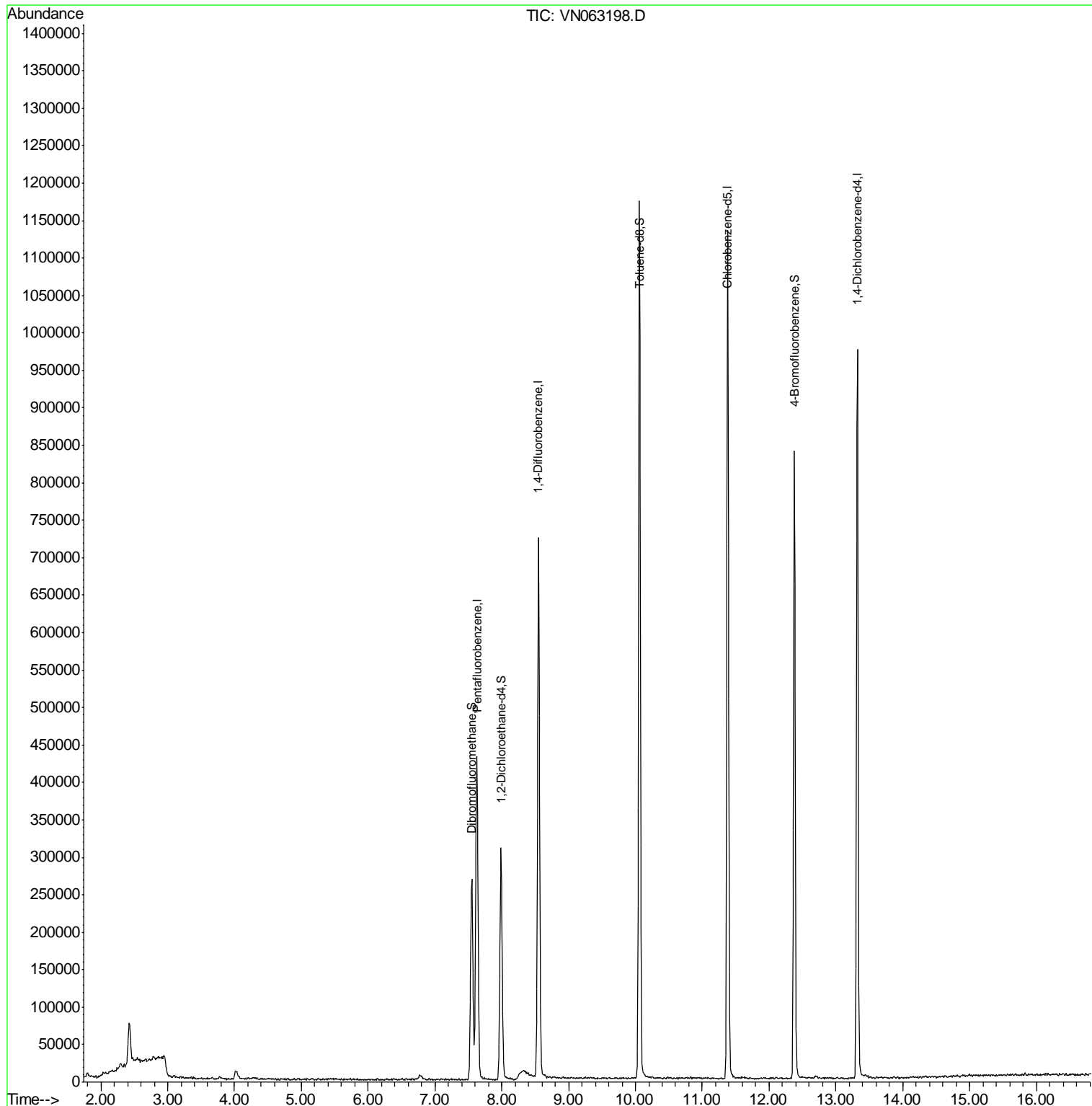
Target Compounds Qvalue

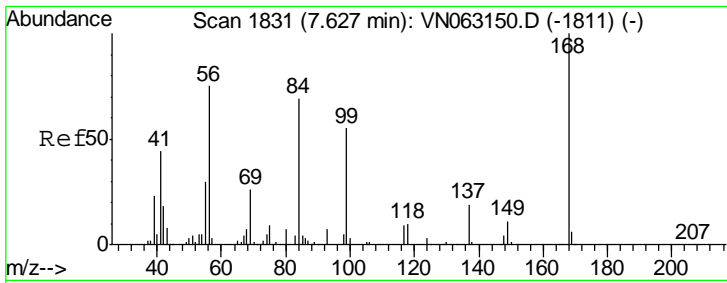
(#) = qualifier out of range (m) = manual integration (+) = signals summed

Data Path : Z:\VOASRV\HPCHEM1\MSVOA N\DATA\VN090220\  
 Data File : VN063198.D  
 Acq On : 2 Sep 2020 16:17  
 Operator : JC/MD  
 Sample : L3889-06  
 Misc : 5.00mL/MSVOA N/WATER  
 ALS Vial : 18 Sample Multiplier: 1

**Instrument :**  
 MSVOA\_N  
**ClientSampleId :**  
 BP-VPB181-DUP-20200831

Quant Time: Sep 03 02:29:10 2020  
 Quant Method : Z:\VOASRV\HPCHEM1\MSVOA\_N\METHODS\82N083120W.M  
 Quant Title : SW846 8260  
 QLast Update : Tue Sep 01 04:21:28 2020  
 Response via : Initial Calibration

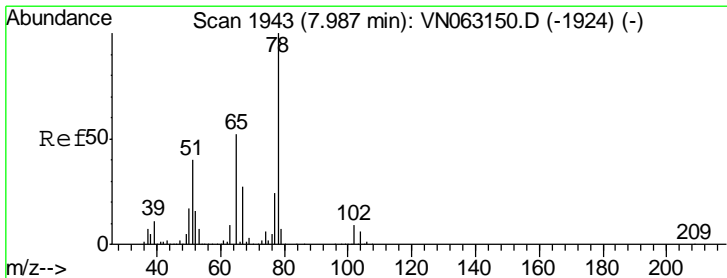
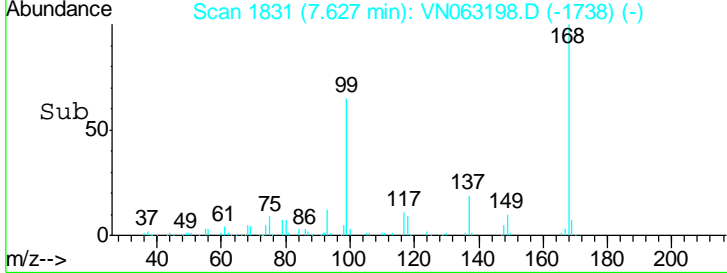
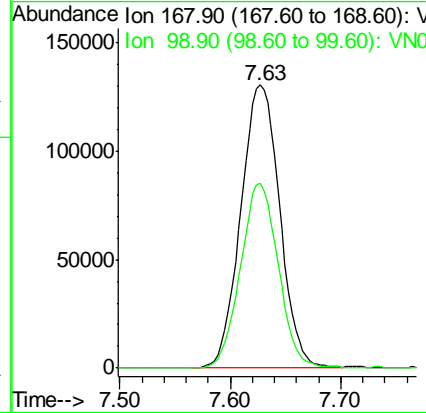
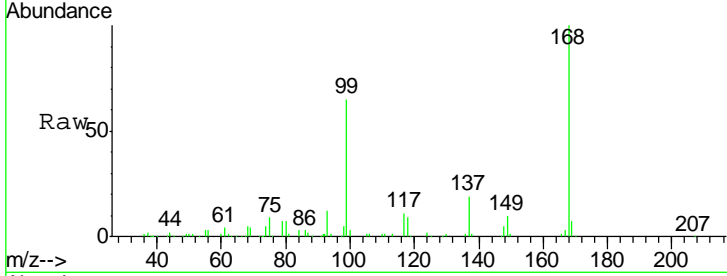




#1  
 Pentafluorobenzene  
 Concen: 50.000 ug/l  
 RT: 7.63 min Scan# 1831  
 Delta R.T. 0.00 min  
 Lab File: VN063198.D  
 Acq: 2 Sep 2020 16:17

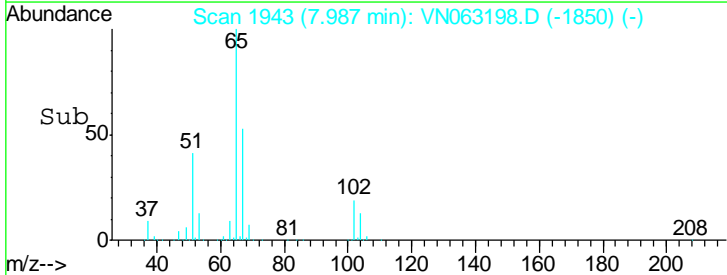
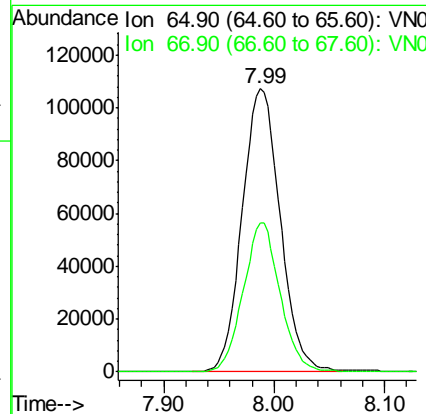
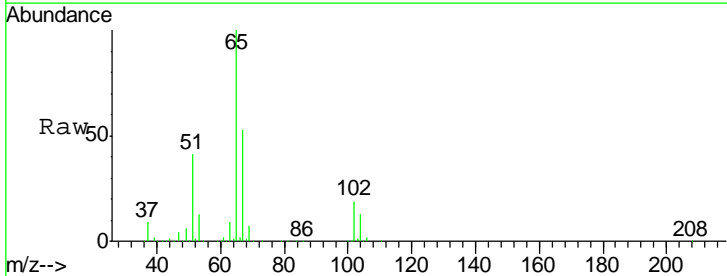
Instrument :  
 MSVOA\_N  
 ClientSampled :  
 BP-VPB181-DUP-20200831

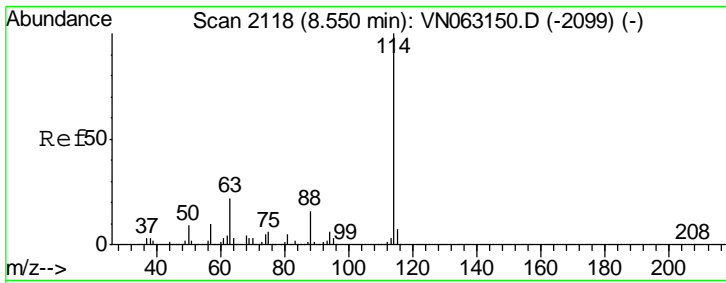
Tgt Ion: 168 Resp: 319730  
 Ion Ratio Lower Upper  
 168 100  
 99 65.0 54.2 81.2



#33  
 1,2-Dichloroethane-d4  
 Concen: 48.970 ug/l  
 RT: 7.99 min Scan# 1943  
 Delta R.T. 0.00 min  
 Lab File: VN063198.D  
 Acq: 2 Sep 2020 16:17

Tgt Ion: 65 Resp: 255950  
 Ion Ratio Lower Upper  
 65 100  
 67 50.7 0.0 104.4

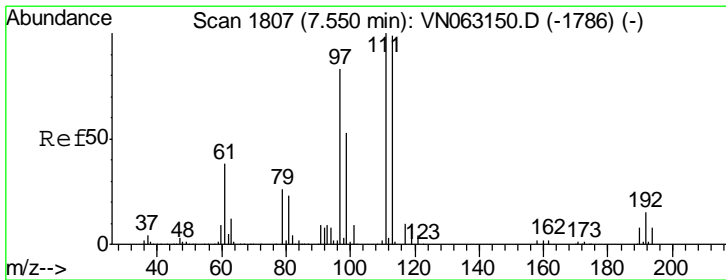
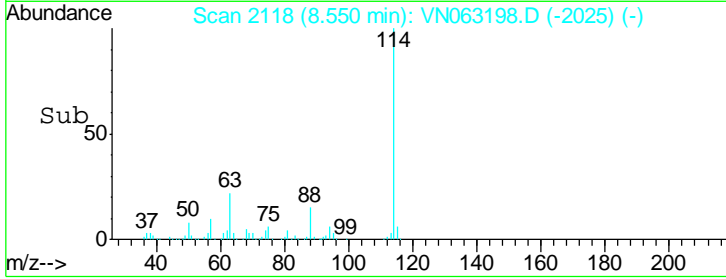
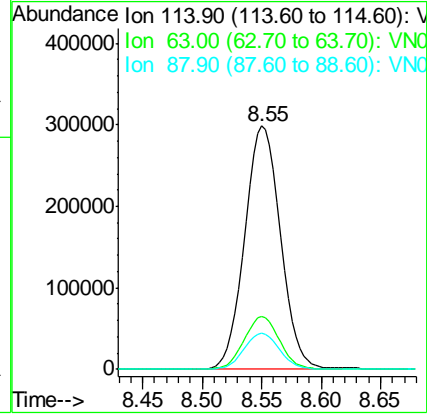
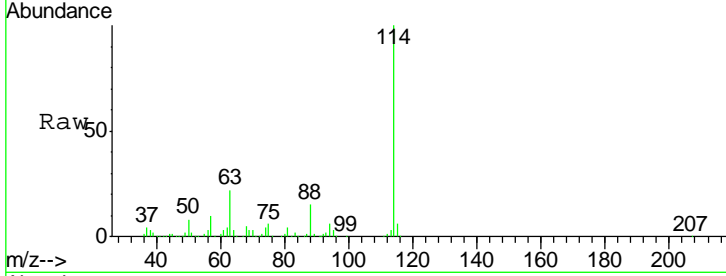




#34  
 1,4-Difluorobenzene  
 Concen: 50.000 ug/l  
 RT: 8.55 min Scan# 2118  
 Delta R.T. -0.00 min  
 Lab File: VN063198.D  
 Acq: 2 Sep 2020 16:17

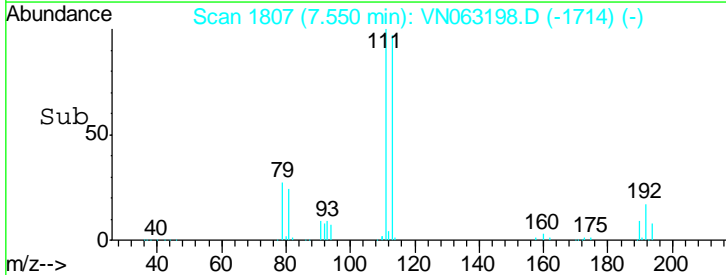
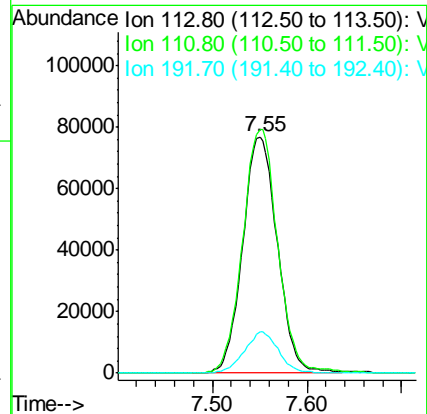
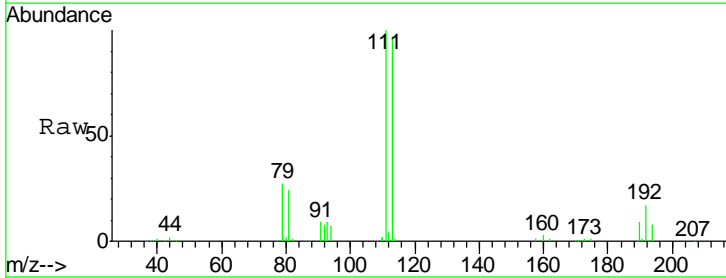
Instrument :  
 MSVOA\_N  
 ClientSampleId :  
 BP-VPB181-DUP-20200831

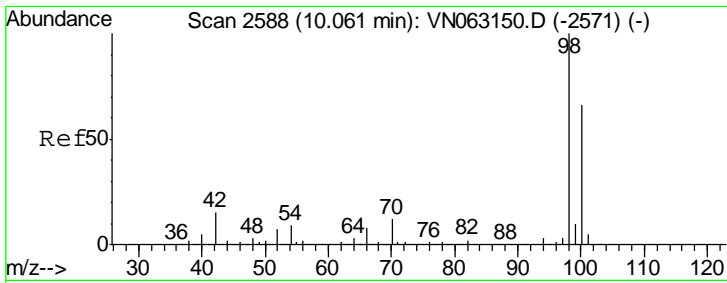
Tgt Ion	Resp	Lower	Upper
114	100		
63	21.8	0.0	43.0
88	14.8	0.0	31.6



#35  
 Dibromofluoromethane  
 Concen: 48.776 ug/l  
 RT: 7.55 min Scan# 1807  
 Delta R.T. 0.00 min  
 Lab File: VN063198.D  
 Acq: 2 Sep 2020 16:17

Tgt Ion	Resp	Lower	Upper
113	100		
111	104.7	80.7	121.1
192	17.2	12.6	19.0

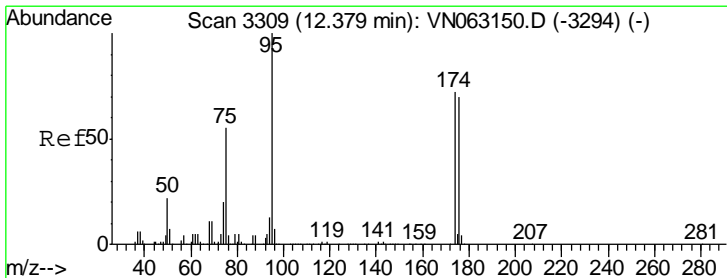
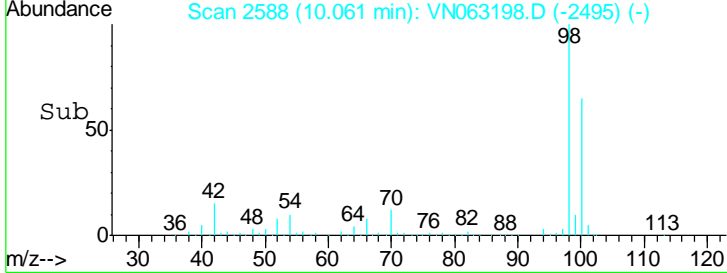
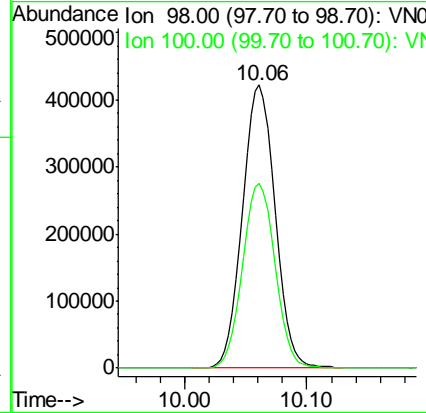
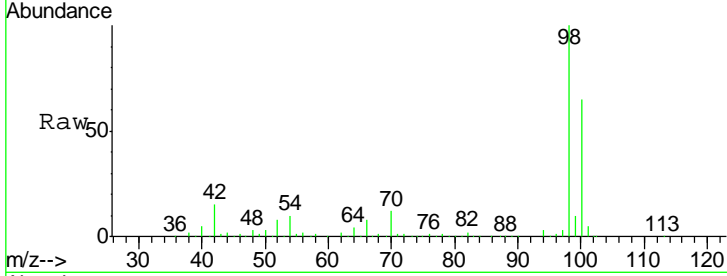




#50  
 Toluene-d8  
 Concen: 50.563 ug/l  
 RT: 10.06 min Scan# 2588  
 Delta R.T. 0.00 min  
 Lab File: VN063198.D  
 Acq: 2 Sep 2020 16:17

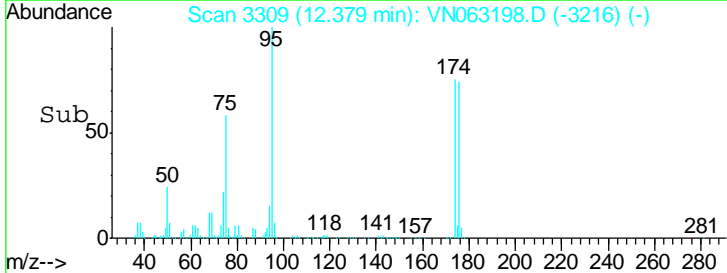
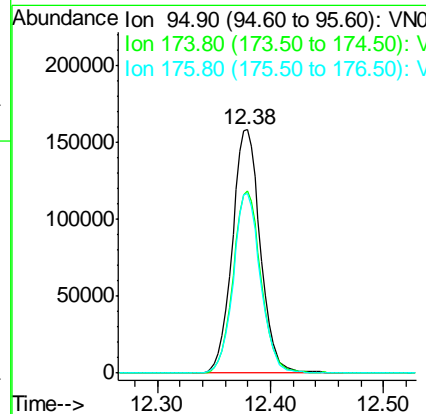
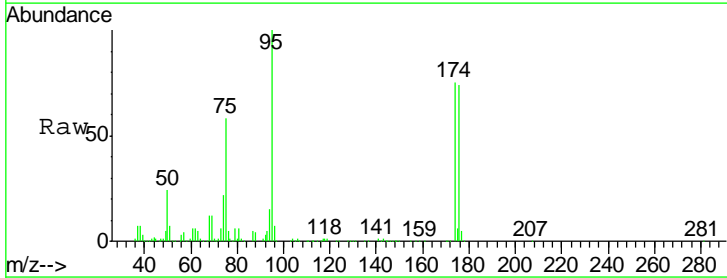
**Instrument :**  
 MSVOA\_N  
**ClientSampled :**  
 BP-VPB181-DUP-20200831

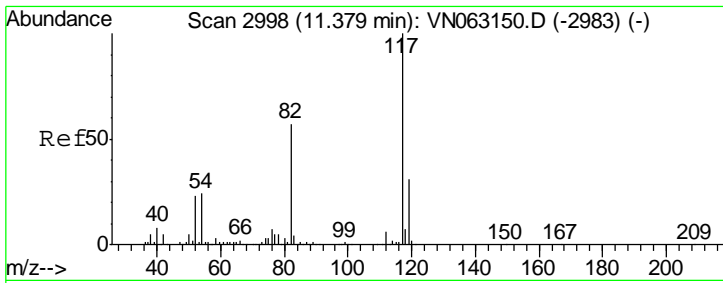
Tgt Ion: 98 Resp: 779840  
 Ion Ratio Lower Upper  
 98 100  
 100 65.0 52.0 78.0



#62  
 4-Bromofluorobenzene  
 Concen: 50.596 ug/l  
 RT: 12.38 min Scan# 3309  
 Delta R.T. 0.00 min  
 Lab File: VN063198.D  
 Acq: 2 Sep 2020 16:17

Tgt Ion: 95 Resp: 272969  
 Ion Ratio Lower Upper  
 95 100  
 174 74.0 0.0 143.8  
 176 71.5 0.0 138.4

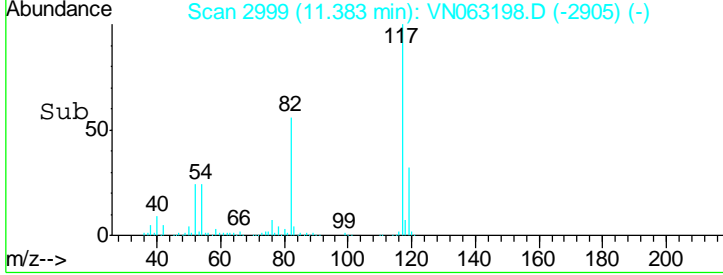
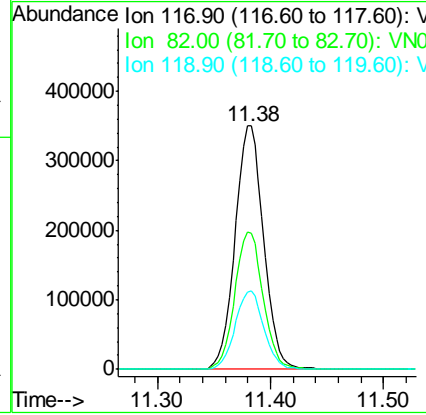
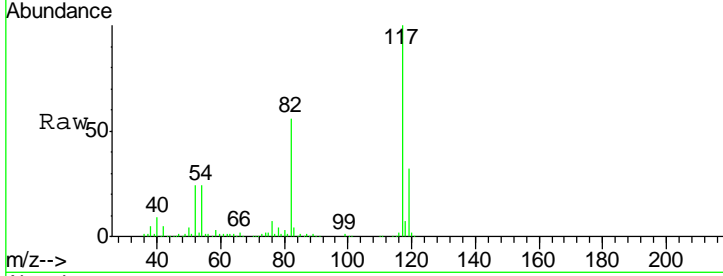




#63  
 Chlorobenzene-d5  
 Concen: 50.000 ug/l  
 RT: 11.38 min Scan# 2999  
 Delta R.T. 0.00 min  
 Lab File: VN063198.D  
 Acq: 2 Sep 2020 16:17

**Instrument :**  
 MSVOA\_N  
**ClientSampleId :**  
 BP-VPB181-DUP-20200831

Tgt Ion	Resp	Lower	Upper
117	614279		
82	55.9	45.4	68.0
119	32.3	24.6	37.0



#72  
 1,4-Dichlorobenzene-d4  
 Concen: 50.000 ug/l  
 RT: 13.32 min Scan# 3602  
 Delta R.T. 0.00 min  
 Lab File: VN063198.D  
 Acq: 2 Sep 2020 16:17

Tgt Ion	Resp	Lower	Upper
152	237276		
115	60.5	32.0	96.2
150	159.0	0.0	353.0

