

Data Path : Z:\VOASRV\HPCHEM1\MSVOA N\DATA\VN090319\
 Data File : VN057668.D
 Acq On : 3 Sep 2019 17:50
 Operator : JC/SP
 Sample : VN0903WBL01
 Misc : 5.00mL/MSVOA N/WATER
 ALS Vial : 12 Sample Multiplier: 1

Instrument :
 MSVOA_N
 ClientSampleId :
 VN0903WBL01

Quant Time: Sep 04 02:25:17 2019
 Quant Method : Z:\VOASRV\HPCHEM1\MSVOA N\METHODS\624N090319W.M
 Quant Title : METHOD 624 VOLATILE ORGANIC ANALYSIS
 QLast Update : Wed Sep 04 02:08:50 2019
 Response via : Initial Calibration

Internal Standards	R.T.	QIon	Response	Conc	Units	Dev(Min)
1) Bromochloromethane	7.18	128	55347	30.00	ug/l	0.00
28) 1,4-Difluorobenzene	8.58	114	339662	30.00	ug/l	0.00
57) Chlorobenzene-d5	11.41	117	268984	30.00	ug/l	0.00

System Monitoring Compounds

27) 1,2-Dichloroethane-d4	8.01	65	182742	31.06	ug/l	0.00
Spiked Amount	30.000	Range	50 - 169	Recovery	=	103.53%
60) 4-Bromofluorobenzene	12.40	95	108079	23.52	ug/l	0.00
Spiked Amount	30.000	Range	56 - 143	Recovery	=	78.40%
63) Toluene-d8	10.08	98	414771	32.02	ug/l	0.00
Spiked Amount	30.000	Range	66 - 137	Recovery	=	106.73%

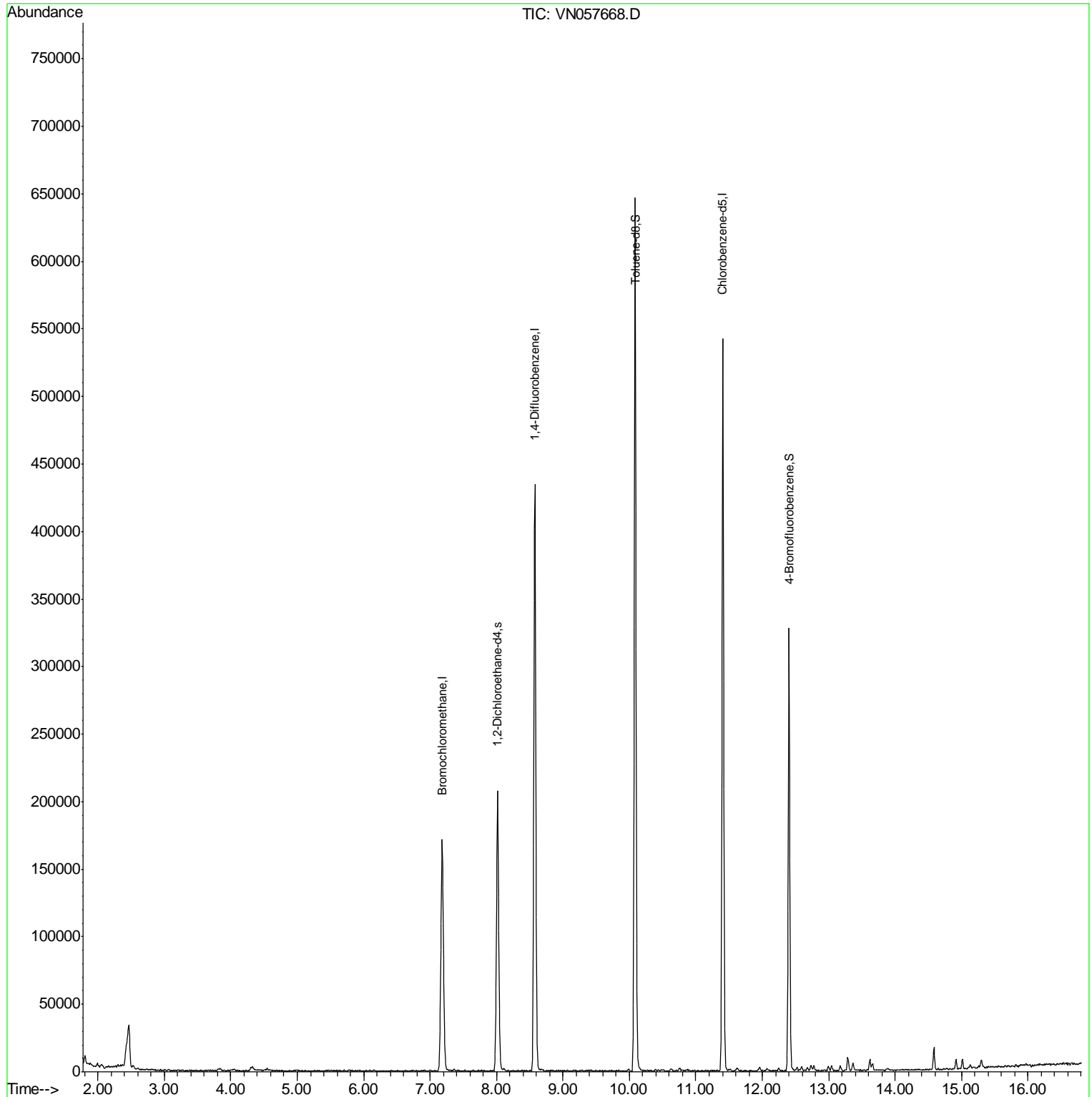
Target Compounds Ovalue

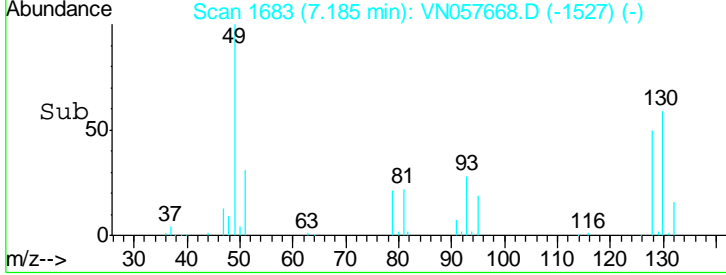
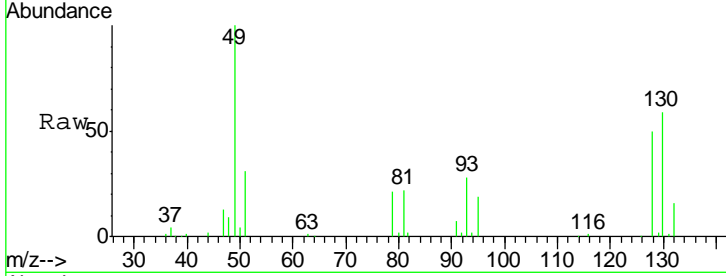
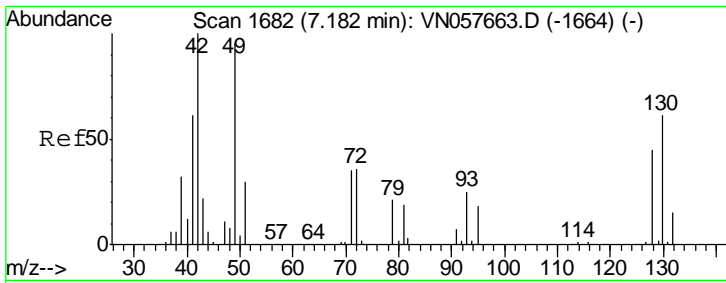
(#) = qualifier out of range (m) = manual integration (+) = signals summed

Data Path : Z:\VOASRV\HPCHEM1\MSVOA N\DATA\VN090319\
Data File : VN057668.D
Acq On : 3 Sep 2019 17:50
Operator : JC/SP
Sample : VN0903WBL01
Misc : 5.00mL/MSVOA N/WATER
ALS Vial : 12 Sample Multiplier: 1

Instrument :
MSVOA_N
ClientSampleId :
VN0903WBL01

Quant Time: Sep 04 02:25:17 2019
Quant Method : Z:\VOASRV\HPCHEM1\MSVOA N\METHODS\624N090319W.M
Quant Title : METHOD 624 VOLATILE ORGANIC ANALYSIS
QLast Update : Wed Sep 04 02:08:50 2019
Response via : Initial Calibration



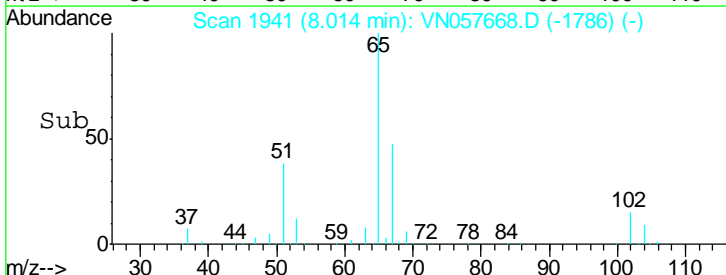
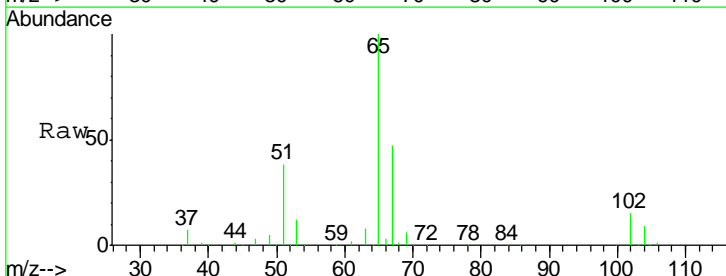
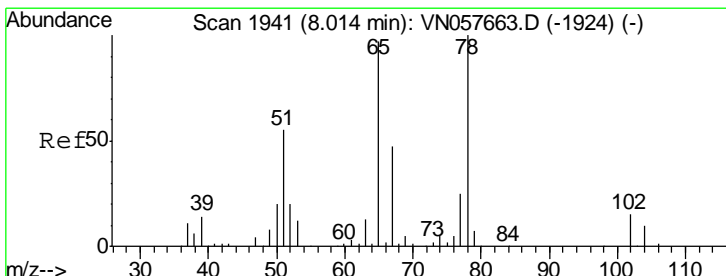
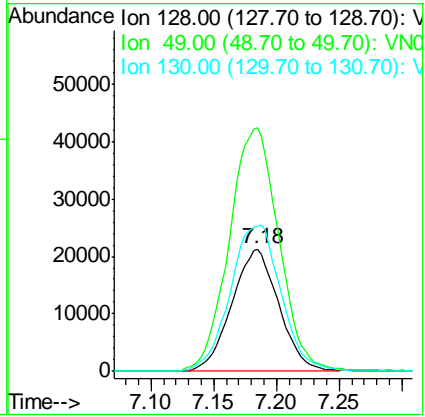


#1
 Bromochloromethane
 Concen: 30.000 ug/l
 RT: 7.18 min Scan# 1683
 Delta R.T. 0.00 min
 Lab File: VN057668.D
 Acq: 3 Sep 2019 17:50

Instrument :
 MSVOA_N
 ClientSampled :
 VN0903WBL01

Tgt Ion:128 Resp: 55347

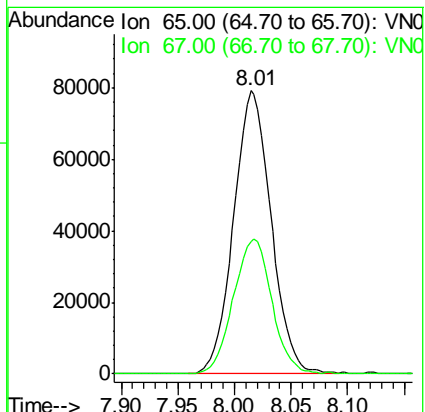
Ion	Ratio	Lower	Upper
128	100		
49	210.0	0.0	544.5
130	129.4	0.0	324.7

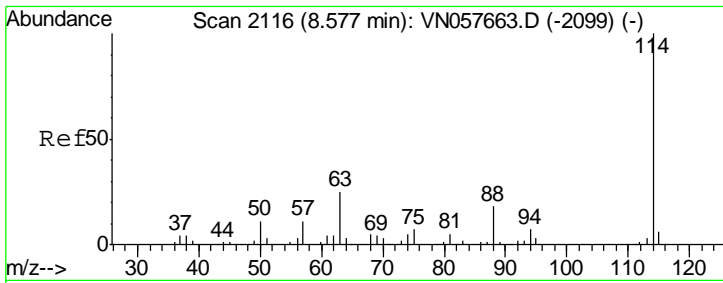


#27
 1,2-Dichloroethane-d4
 Concen: 31.060 ug/l
 RT: 8.01 min Scan# 1941
 Delta R.T. -0.00 min
 Lab File: VN057668.D
 Acq: 3 Sep 2019 17:50

Tgt Ion: 65 Resp: 182742

Ion	Ratio	Lower	Upper
65	100		
67	48.9	38.6	57.8

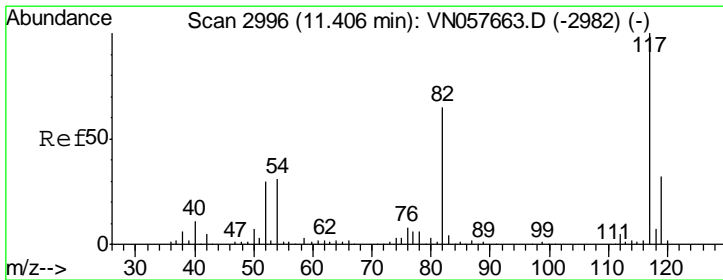
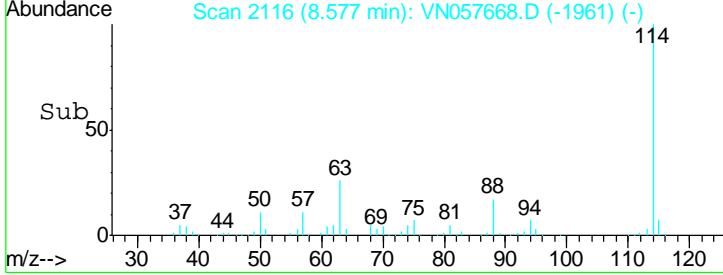
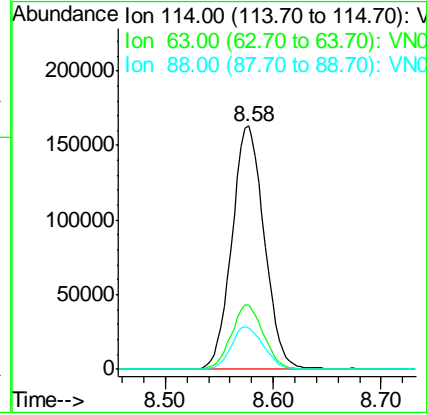
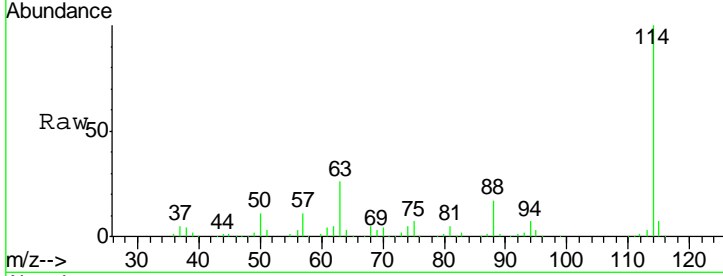




#28
 1,4-Difluorobenzene
 Concen: 30.000 ug/l
 RT: 8.58 min Scan# 2116
 Delta R.T. -0.00 min
 Lab File: VN057668.D
 Acq: 3 Sep 2019 17:50

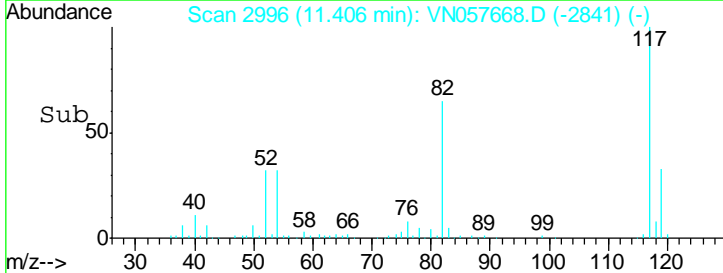
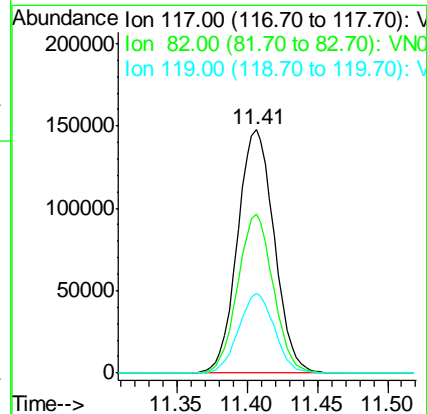
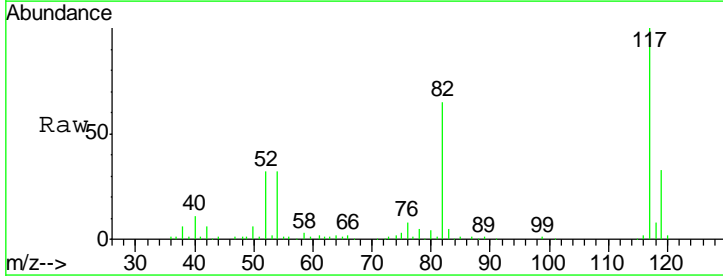
Instrument :
 MSVOA_N
 ClientSampled :
 VN0903WBL01

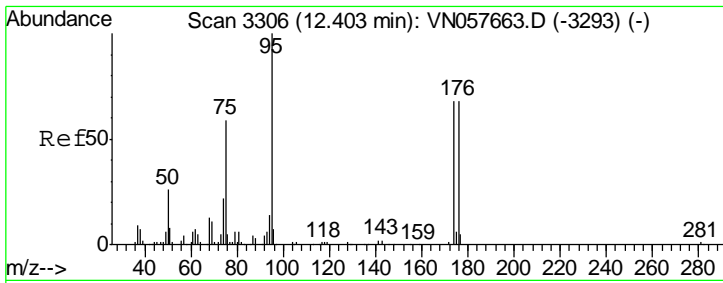
Tgt Ion	Resp	Lower	Upper
114	100		
63	26.2	20.6	30.8
88	17.4	14.3	21.5



#57
 Chlorobenzene-d5
 Concen: 30.000 ug/l
 RT: 11.41 min Scan# 2996
 Delta R.T. -0.00 min
 Lab File: VN057668.D
 Acq: 3 Sep 2019 17:50

Tgt Ion	Resp	Lower	Upper
117	100		
82	63.4	51.2	76.8
119	32.1	25.8	38.6

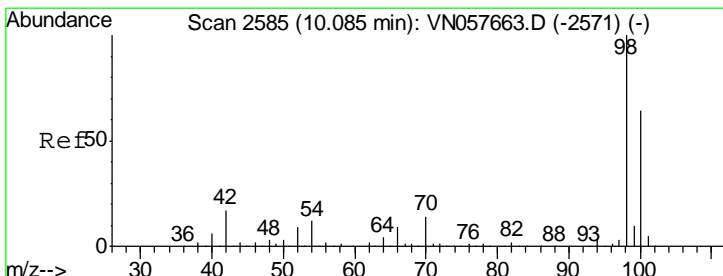
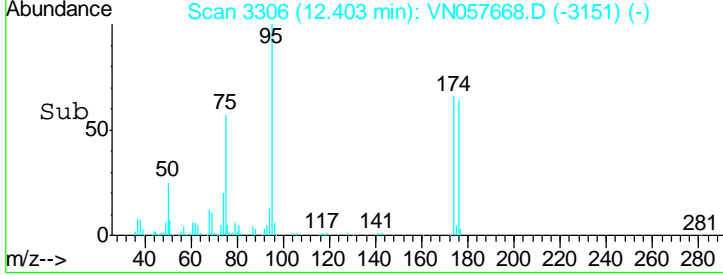
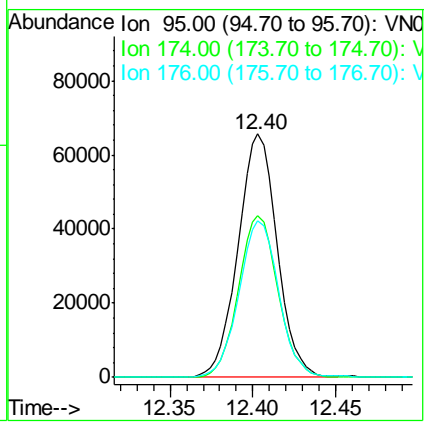
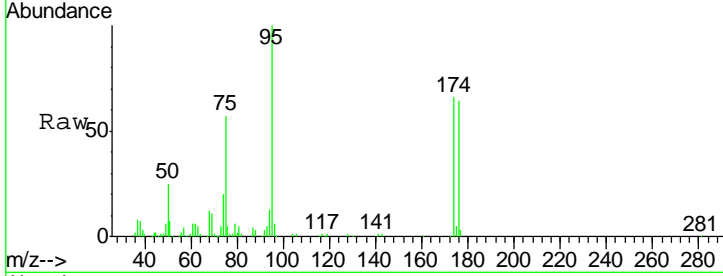




#60
 4-Bromofluorobenzene
 Concen: 23.519 ug/l
 RT: 12.40 min Scan# 3306
 Delta R.T. -0.00 min
 Lab File: VN057668.D
 Acq: 3 Sep 2019 17:50

Instrument : MSVOA_N
 ClientSampled : VN0903WBL01

Tgt Ion	Resp	Lower	Upper
95	108079		
174	66.7	55.0	82.6
176	65.2	53.7	80.5



#63
 Toluene-d8
 Concen: 32.023 ug/l
 RT: 10.08 min Scan# 2585
 Delta R.T. -0.00 min
 Lab File: VN057668.D
 Acq: 3 Sep 2019 17:50

Tgt Ion	Resp	Lower	Upper
98	414771		
100	63.2	51.0	76.6

