

Data Path : Z:\VOASRV\HPCHEM1\MSVOA N\DATA\VN090320\  
 Data File : VN063216.D  
 Acq On : 3 Sep 2020 13:36  
 Operator : JC/MD  
 Sample : PB131386ZHE#05  
 Misc : 5.00mL/MSVOA N/WATER  
 ALS Vial : 10 Sample Multiplier: 1

Instrument :  
 MSVOA\_N  
 ClientSampleId :  
 PB131386ZHE#05

Quant Time: Sep 04 04:03:54 2020  
 Quant Method : Z:\VOASRV\HPCHEM1\MSVOA\_N\METHODS\82N083120W.M  
 Quant Title : SW846 8260  
 QLast Update : Tue Sep 01 04:21:28 2020  
 Response via : Initial Calibration

Internal Standards	R.T.	QIon	Response	Conc	Units	Dev(Min)
1) Pentafluorobenzene	7.63	168	302895	50.00	ug/l	0.00
34) 1,4-Difluorobenzene	8.55	114	592320	50.00	ug/l	0.00
63) Chlorobenzene-d5	11.38	117	592362	50.00	ug/l	0.00
72) 1,4-Dichlorobenzene-d4	13.32	152	229052	50.00	ug/l	0.00

## System Monitoring Compounds

33) 1,2-Dichloroethane-d4	7.99	65	235900	47.64	ug/l	0.00
Spiked Amount	50.000		Recovery	=	95.28%	
35) Dibromofluoromethane	7.55	113	183042	48.17	ug/l	0.00
Spiked Amount	50.000		Recovery	=	96.34%	
50) Toluene-d8	10.06	98	749397	51.24	ug/l	0.00
Spiked Amount	50.000		Recovery	=	102.48%	
62) 4-Bromofluorobenzene	12.38	95	263773	51.55	ug/l	0.00
Spiked Amount	50.000		Recovery	=	103.10%	

## Target Compounds

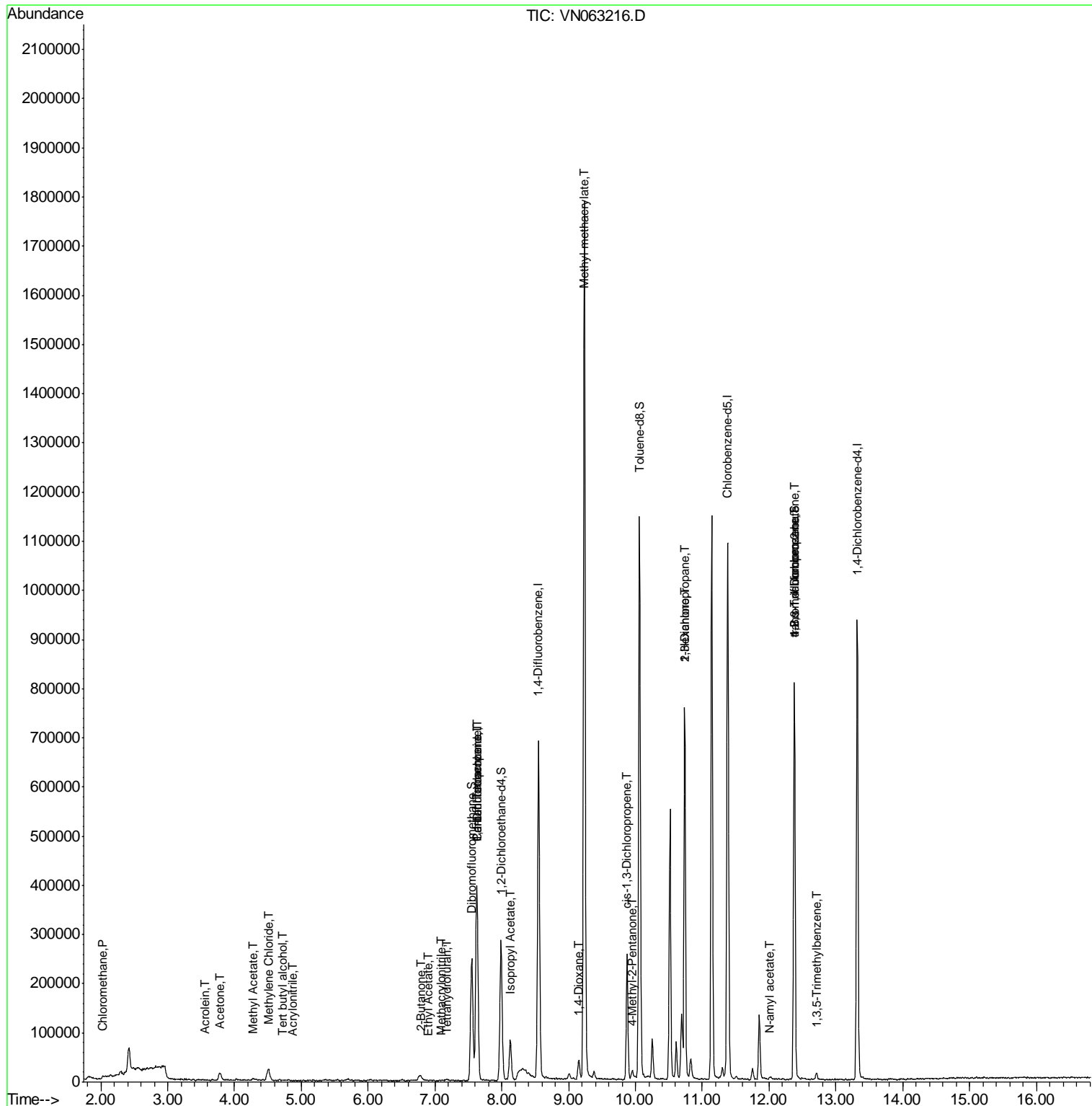
					Qvalue	
3) Chloromethane	2.03	50	1786	0.411	ug/l	# 88
7) Trichlorofluoromethane	2.93	101	29	Below	Cal	# 19
11) Tert butyl alcohol	4.73	59	282	0.464	ug/l	# 72
13) Acrolein	3.56	56	68	16.045	ug/l	# 15
15) Acrylonitrile	4.88	53	73	2.446	ug/l	92
16) Acetone	3.78	43	26592	18.892	ug/l	93
18) Methyl Acetate	4.29	43	6095	1.689	ug/l	# 66
20) Methylene Chloride	4.51	84	16298	3.662	ug/l	90
25) 2-Butanone	6.80	43	5159	2.367	ug/l	99
29) Tetrahydrofuran	7.18	42	2093	1.389	ug/l	# 77
31) Cyclohexane	7.63	56	9792	Below	Cal	# 37
36) 1,1-Dichloropropene	7.63	75	27889	4.898	ug/l	# 51
37) Ethyl Acetate	6.89	43	376	0.450	ug/l	# 72
38) Carbon Tetrachloride	7.62	117	31223	5.407	ug/l	# 16
41) Methacrylonitrile	7.10	41	566	0.236	ug/l	# 25
43) Isopropyl Acetate	8.13	43	102462	11.033	ug/l	# 90
48) Methyl methacrylate	9.23	41	168373	40.219	ug/l	# 47
49) 1,4-Dioxane	9.16	88	280	4.324	ug/l	# 1
51) 4-Methyl-2-Pentanone	9.95	43	12716	2.520	ug/l	90
54) cis-1,3-Dichloropropene	9.87	75	47458	6.568	ug/l	# 65
57) 1,3-Dichloropropane	10.74	76	7822	1.100	ug/l	# 43
59) 2-Hexanone	10.74	43	112794	31.804	ug/l	# 51
74) N-amyl acetate	12.00	43	3065	0.421	ug/l	# 45
76) 1,2,3-Trichloropropane	12.38	75	150376	33.414	ug/l	# 100
80) 1,3,5-Trimethylbenzene	12.71	105	6156	0.421	ug/l	87
81) trans-1,4-Dichloro-2-buten	12.38	75	150376	80.761	ug/l	# 10

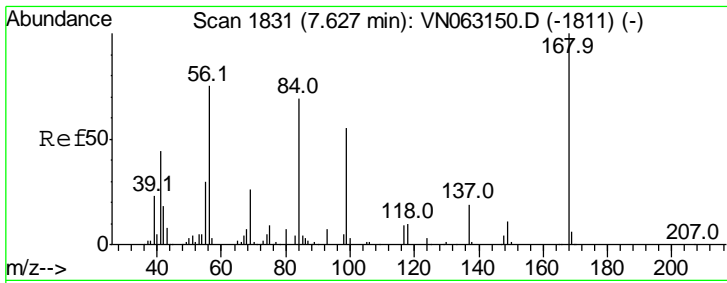
(#) = qualifier out of range (m) = manual integration (+) = signals summed

Data Path : Z:\VOASRV\HPCHEM1\MSVOA N\DATA\VN090320\  
 Data File : VN063216.D  
 Acq On : 3 Sep 2020 13:36  
 Operator : JC/MD  
 Sample : PB131386ZHE#05  
 Misc : 5.00mL/MSVOA N/WATER  
 ALS Vial : 10 Sample Multiplier: 1

Instrument :  
 MSVOA\_N  
 Client Sampled :  
 PB131386ZHE#05

Quant Time: Sep 04 04:03:54 2020  
 Quant Method : Z:\VOASRV\HPCHEM1\MSVOA\_N\METHODS\82N083120W.M  
 Quant Title : SW846 8260  
 QLast Update : Tue Sep 01 04:21:28 2020  
 Response via : Initial Calibration

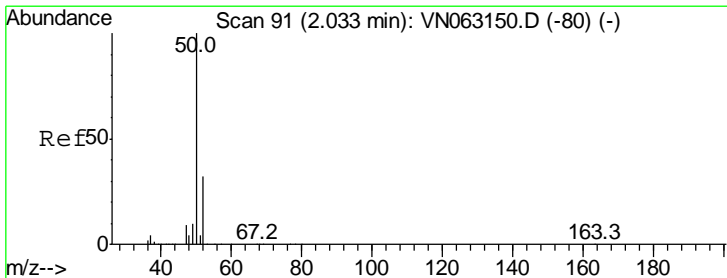
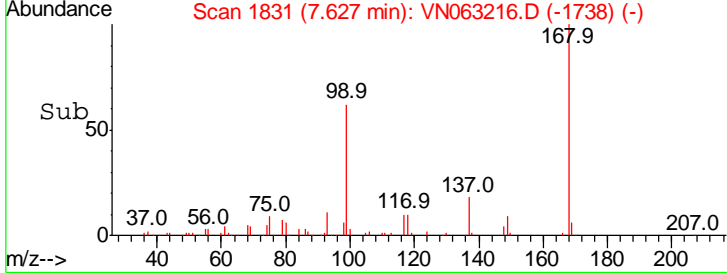
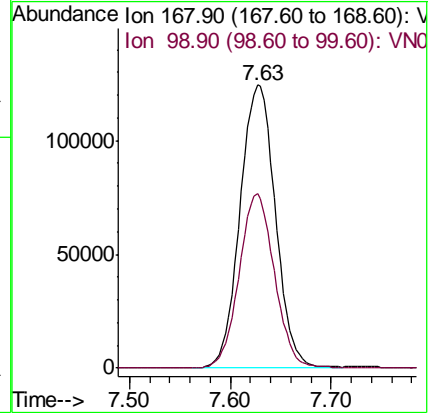
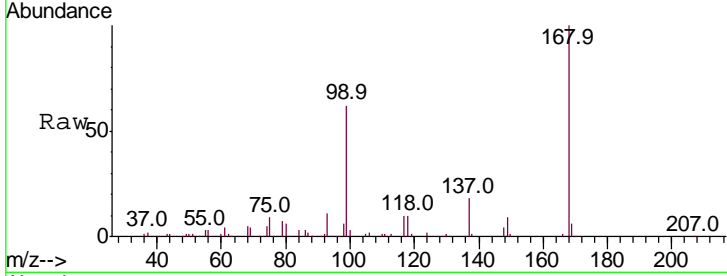




#1  
 Pentafluorobenzene  
 Concen: 50.000 ug/l  
 RT: 7.63 min Scan# 1831  
 Delta R.T. -0.00 min  
 Lab File: VN063216.D  
 Acq: 3 Sep 2020 13:36

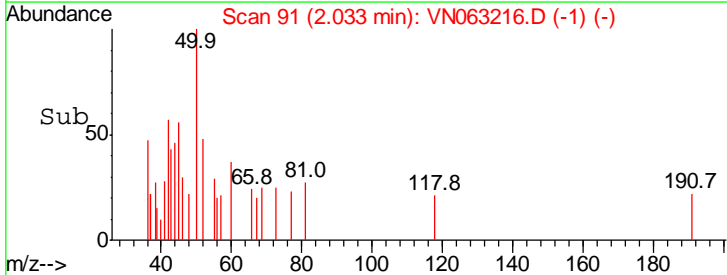
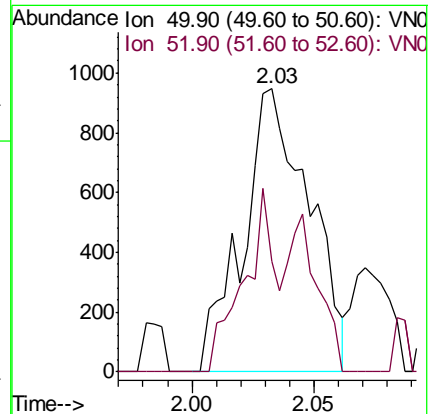
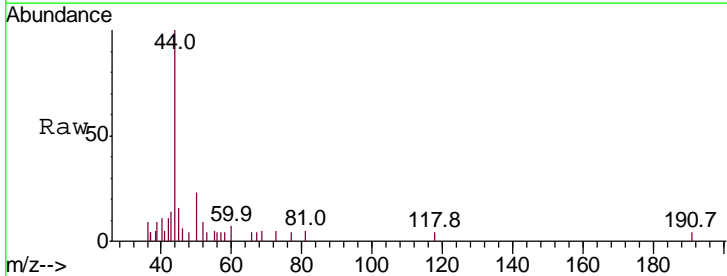
Instrument : MSVOA\_N  
 ClientSampleId : PB131386ZHE#05

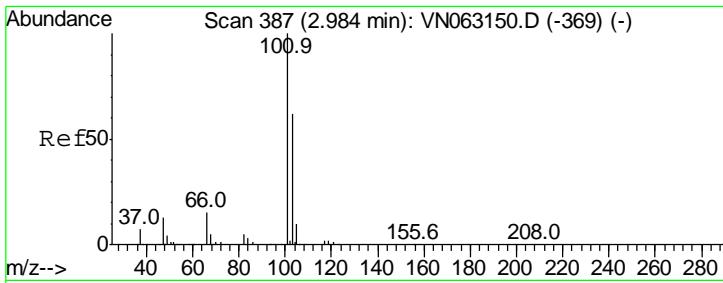
Tot Ion: 168 Resp: 302895  
 Ion Ratio Lower Upper  
 168 100  
 99 61.7 54.2 81.2



#3  
 Chloromethane  
 Concen: 0.411 ug/l  
 RT: 2.03 min Scan# 91  
 Delta R.T. -0.00 min  
 Lab File: VN063216.D  
 Acq: 3 Sep 2020 13:36

Tgt Ion: 50 Resp: 1786  
 Ion Ratio Lower Upper  
 50 100  
 52 39.1 25.8 38.6#

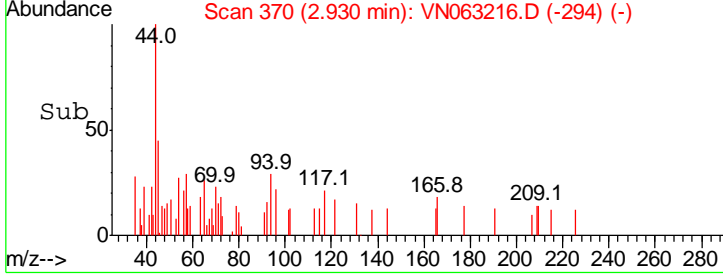
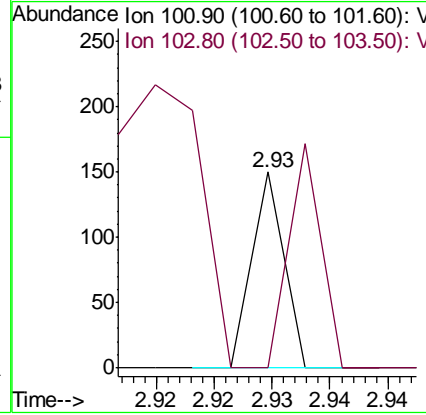
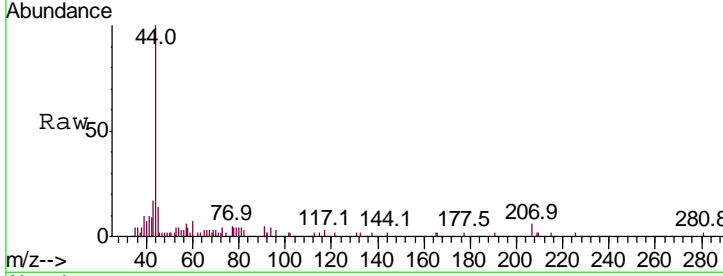




#7  
 Trichlorofluoromethane  
 Concen: Below Cal  
 RT: 2.93 min Scan# 370  
 Delta R.T. -0.05 min  
 Lab File: VN063216.D  
 Acq: 3 Sep 2020 13:36

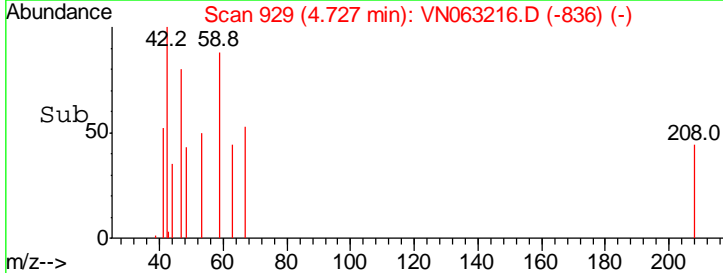
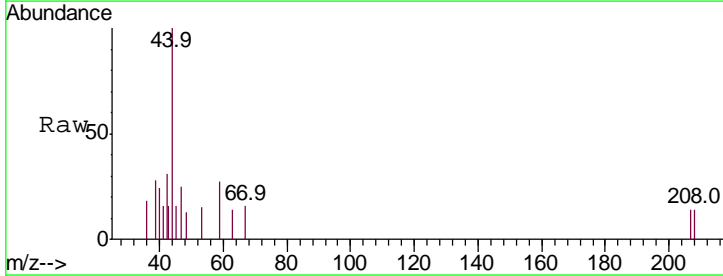
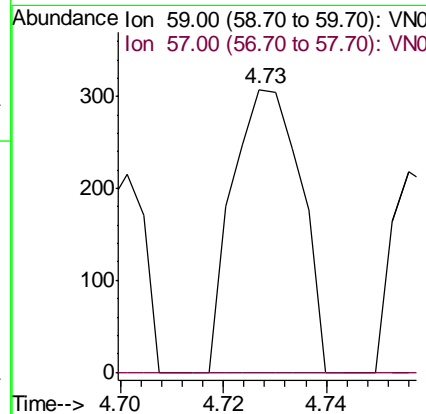
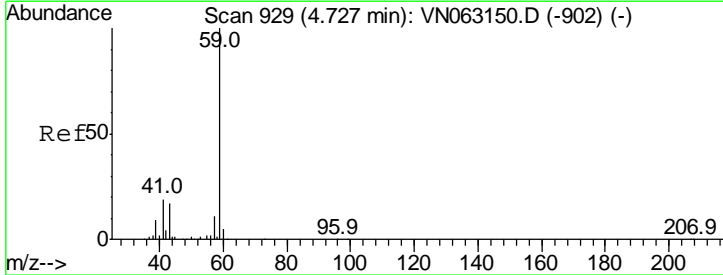
Instrument : MSVOA\_N  
 ClientSampleId : PB131386ZHE#05

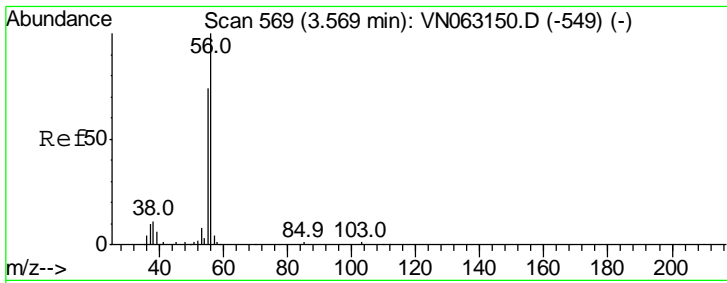
Tgt Ion	Ratio	Lower	Upper
101	100		
103	0.0	49.7	74.5#



#11  
 Tert butyl alcohol  
 Concen: 0.464 ug/l  
 RT: 4.73 min Scan# 929  
 Delta R.T. -0.00 min  
 Lab File: VN063216.D  
 Acq: 3 Sep 2020 13:36

Tgt Ion	Ratio	Lower	Upper
59	100		
57	0.0	8.4	12.6#

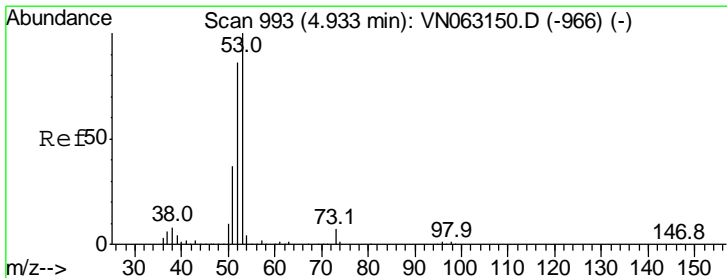
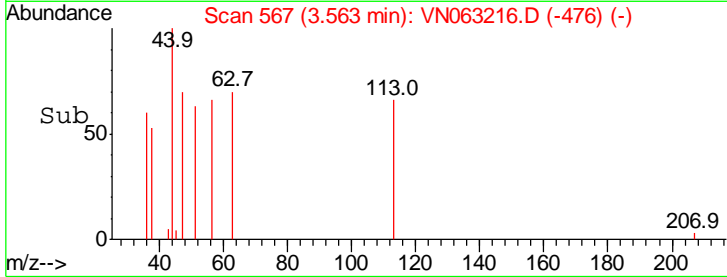
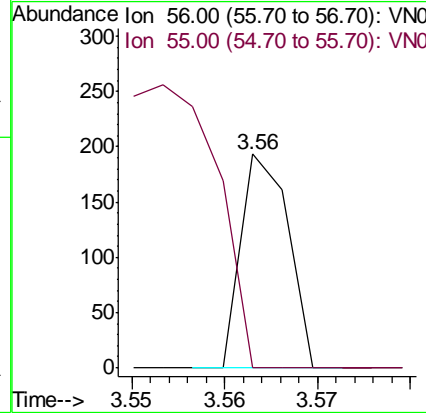
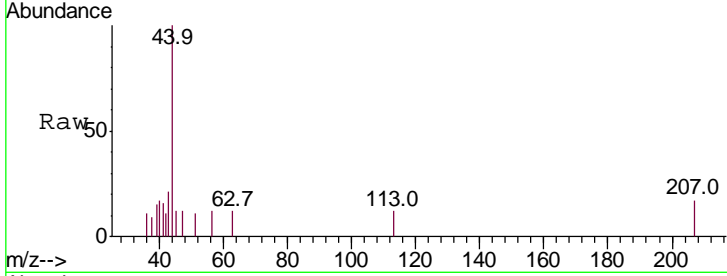




#13  
 Acrolein  
 Concen: 16.045 ug/l  
 RT: 3.56 min Scan# 567  
 Delta R.T. -0.01 min  
 Lab File: VN063216.D  
 Acq: 3 Sep 2020 13:36

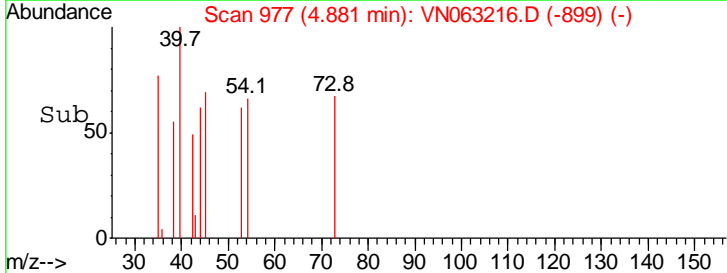
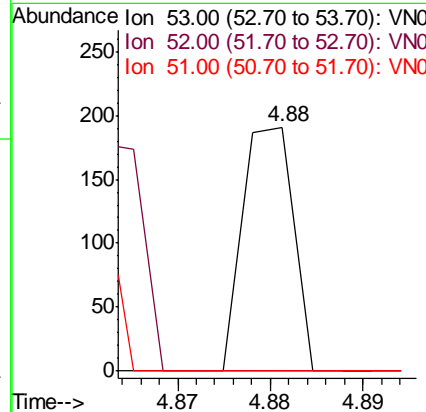
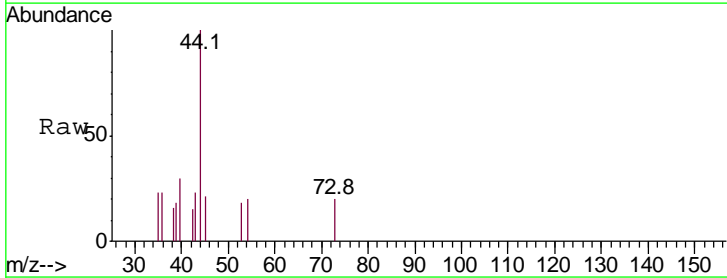
Instrument :  
 MSVOA\_N  
 ClientSampleId :  
 PB131386ZHE#05

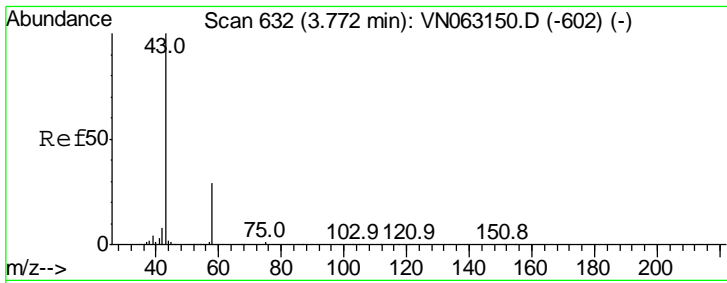
Tgt Ion	Resp	Lower	Upper
56	100		
55	0.0	55.4	83.0#



#15  
 Acrylonitrile  
 Concen: 2.446 ug/l  
 RT: 4.88 min Scan# 977  
 Delta R.T. -0.05 min  
 Lab File: VN063216.D  
 Acq: 3 Sep 2020 13:36

Tgt Ion	Resp	Lower	Upper
53	100		
52	93.2	67.2	100.8
51	39.7	30.2	45.4

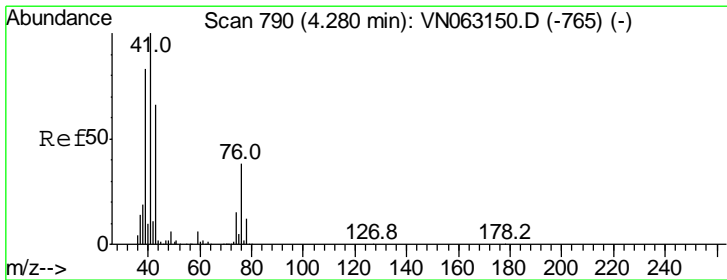
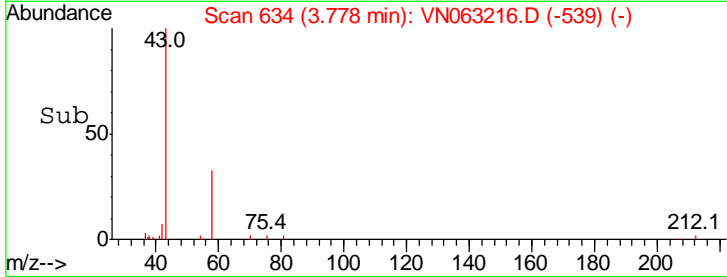
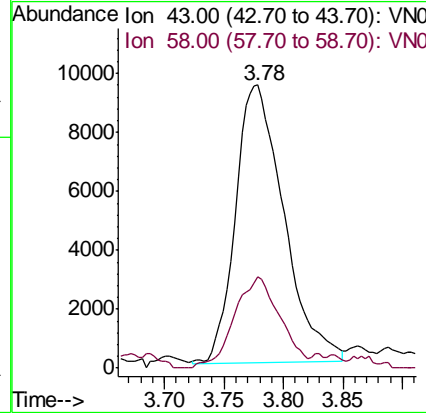
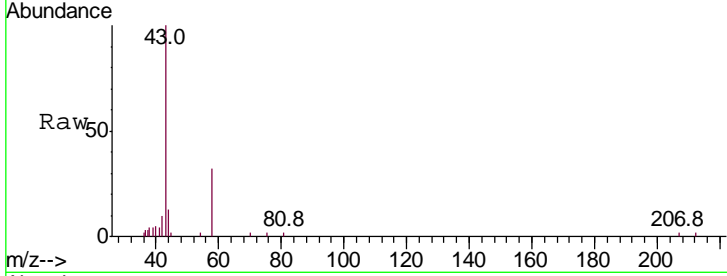




#16  
 Acetone  
 Concen: 18.892 ug/l  
 RT: 3.78 min Scan# 634  
 Delta R.T. 0.01 min  
 Lab File: VN063216.D  
 Acq: 3 Sep 2020 13:36

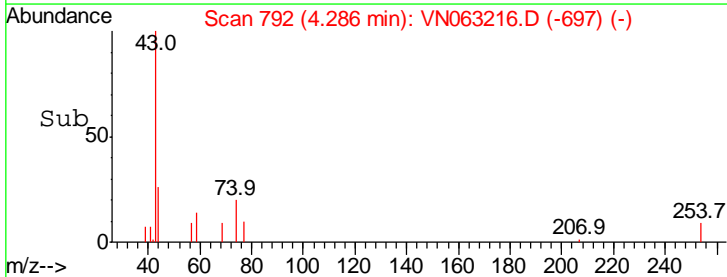
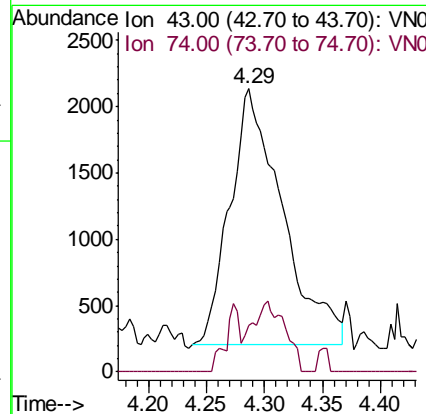
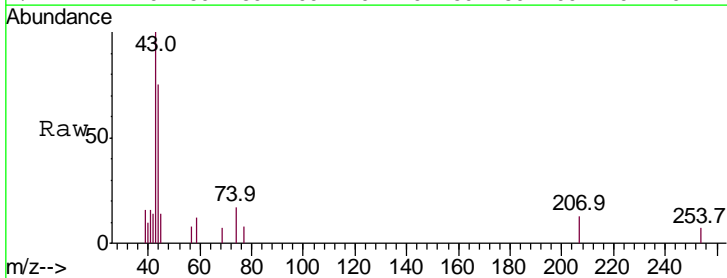
Instrument : MSVOA\_N  
 ClientSampled : PB131386ZHE#05

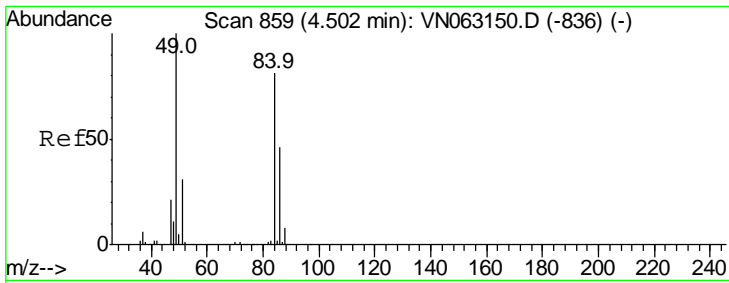
Tgt Ion: 43 Resp: 26592  
 Ion Ratio Lower Upper  
 43 100  
 58 32.9 23.1 34.7



#18  
 Methyl Acetate  
 Concen: 1.689 ug/l  
 RT: 4.29 min Scan# 792  
 Delta R.T. 0.01 min  
 Lab File: VN063216.D  
 Acq: 3 Sep 2020 13:36

Tgt Ion: 43 Resp: 6095  
 Ion Ratio Lower Upper  
 43 100  
 74 7.1 19.0 28.6#

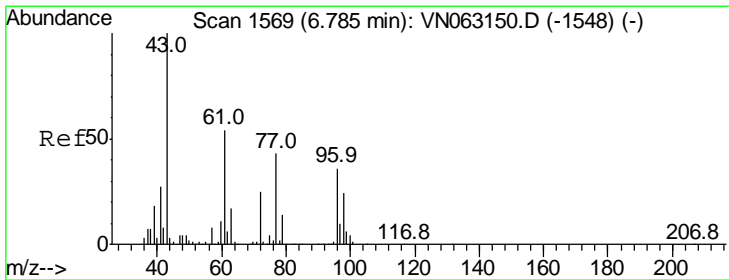
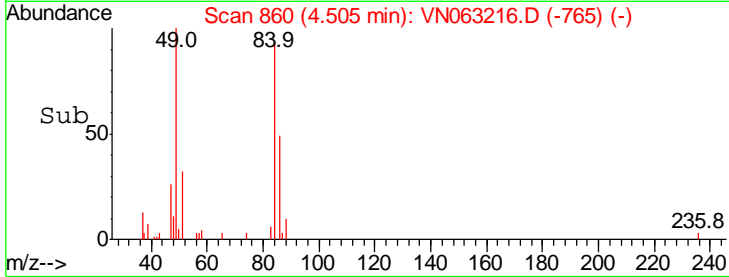
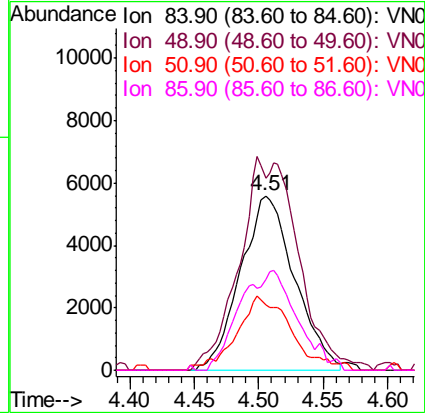
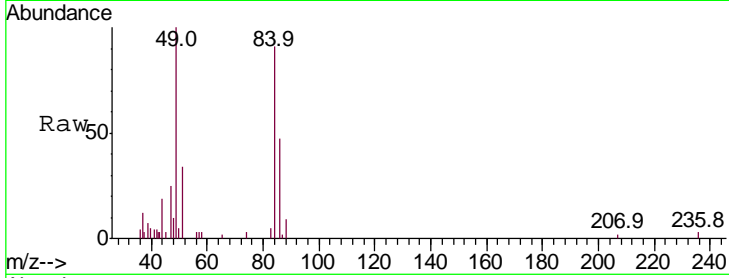




#20  
Methylene Chloride  
Concen: 3.662 ug/l  
RT: 4.51 min Scan# 860  
Delta R.T. 0.00 min  
Lab File: VN063216.D  
Acq: 3 Sep 2020 13:36

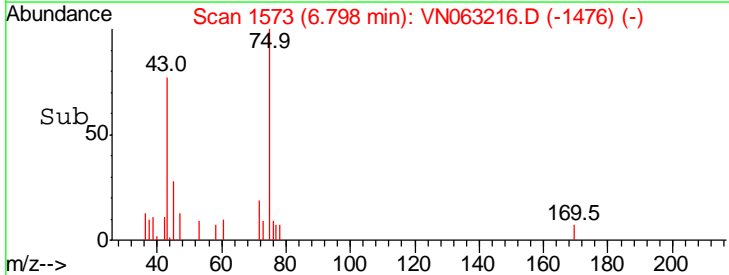
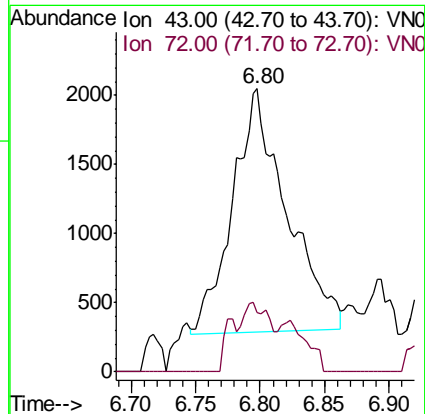
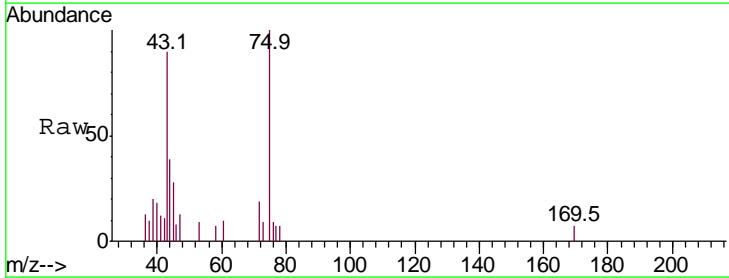
Instrument :  
MSVOA\_N  
ClientSampleID :  
PB131386ZHE#05

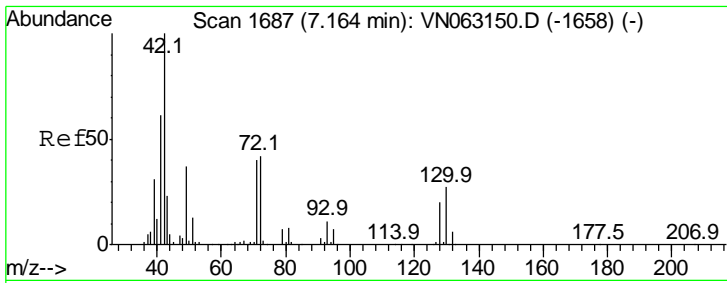
Tgt Ion	Resp	Lower	Upper
84	16298		
84	100		
49	110.4	98.4	147.6
51	34.3	30.4	45.6
86	48.9	45.7	68.5



#25  
2-Butanone  
Concen: 2.367 ug/l  
RT: 6.80 min Scan# 1573  
Delta R.T. 0.01 min  
Lab File: VN063216.D  
Acq: 3 Sep 2020 13:36

Tgt Ion	Resp	Lower	Upper
43	5159		
43	100		
72	24.9	20.2	30.4





#29

Tetrahydrofuran

Concen: 1.389 ug/l

RT: 7.18 min Scan# 1693

Delta R.T. 0.02 min

Lab File: VN063216.D

Acq: 3 Sep 2020 13:36

Instrument :  
MSVOA\_N  
ClientSampled :  
PB131386ZHE#05

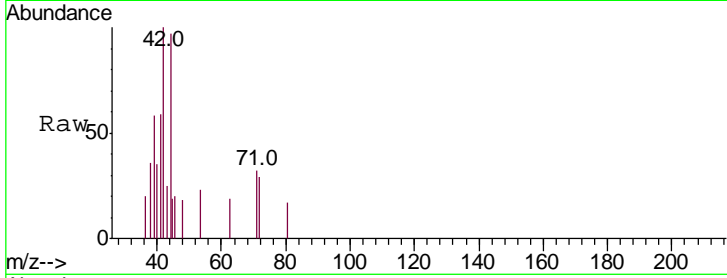
Tgt Ion: 42 Resp: 2093

Ion Ratio Lower Upper

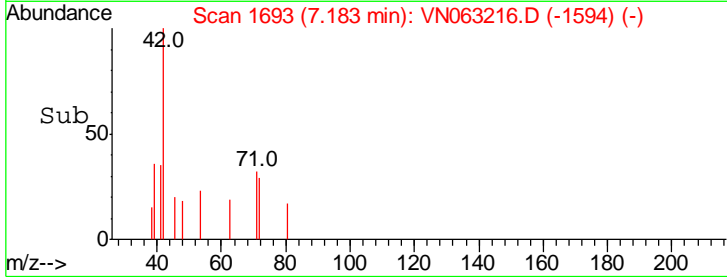
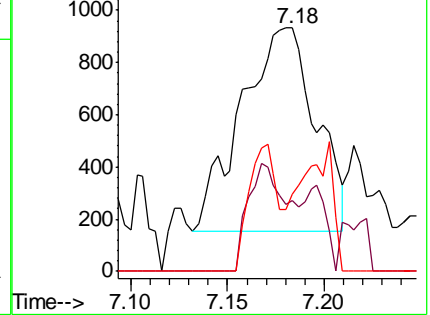
42 100

72 28.0 33.9 50.9#

71 24.9 31.9 47.9#



Abundance Ion 42.00 (41.70 to 42.70): VNO  
Ion 72.00 (71.70 to 72.70): VNO  
Ion 71.00 (70.70 to 71.70): VNO



#31

Cyclohexane

Concen: Below Cal

RT: 7.63 min Scan# 1831

Delta R.T. 0.01 min

Lab File: VN063216.D

Acq: 3 Sep 2020 13:36

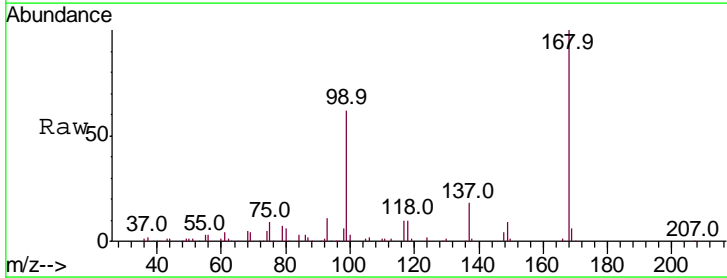
Tgt Ion: 56 Resp: 9792

Ion Ratio Lower Upper

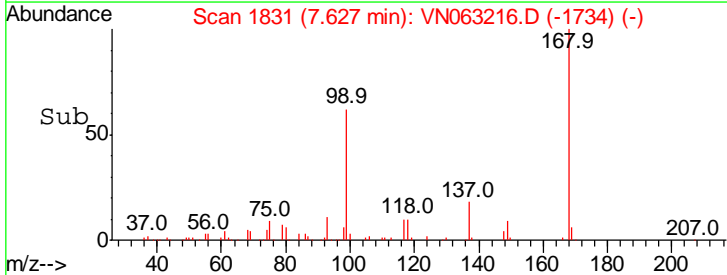
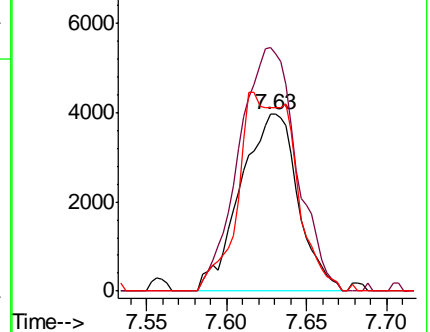
56 100

69 137.6 25.4 38.0#

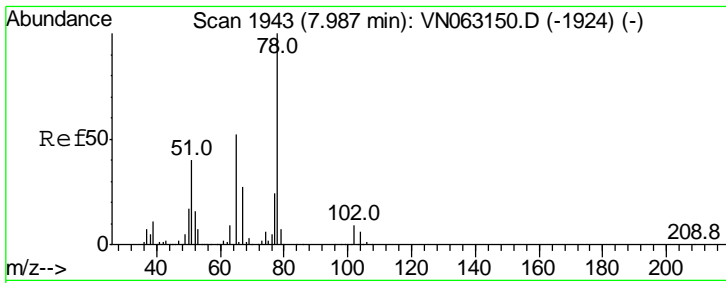
84 103.8 70.2 105.4



Abundance Ion 56.00 (55.70 to 56.70): VNO  
Ion 69.00 (68.70 to 69.70): VNO  
Ion 84.00 (83.70 to 84.70): VNO



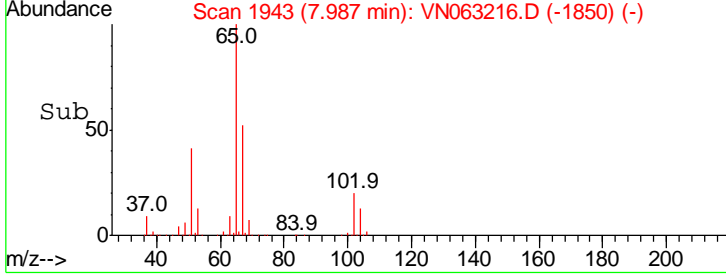
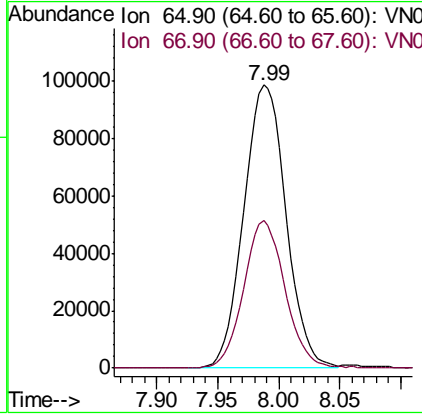
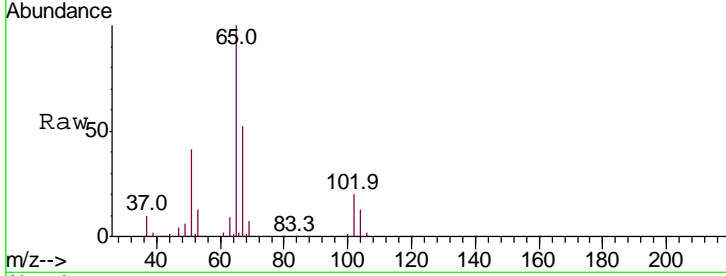




#33  
 1,2-Dichloroethane-d4  
 Concen: 47.643 ug/l  
 RT: 7.99 min Scan# 1943  
 Delta R.T. -0.00 min  
 Lab File: VN063216.D  
 Acq: 3 Sep 2020 13:36

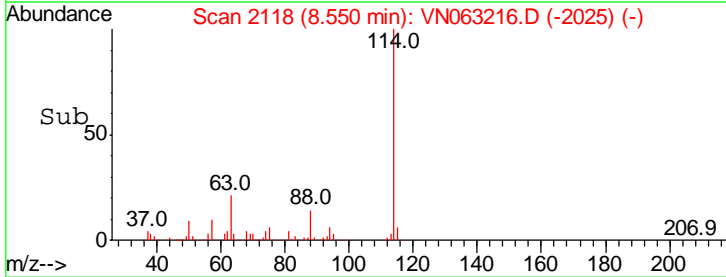
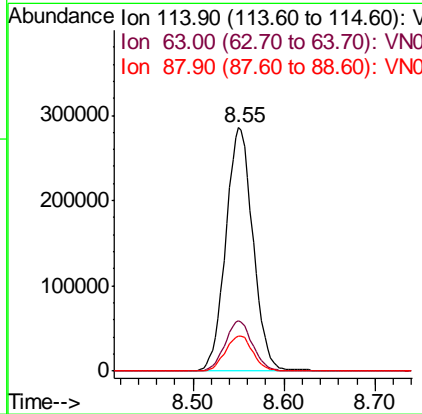
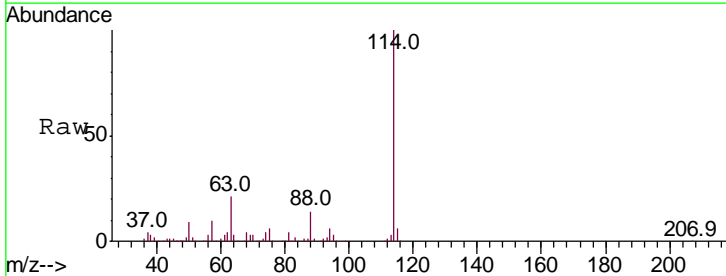
Instrument : MSVOA\_N  
 ClientSampled : PB131386ZHE#05

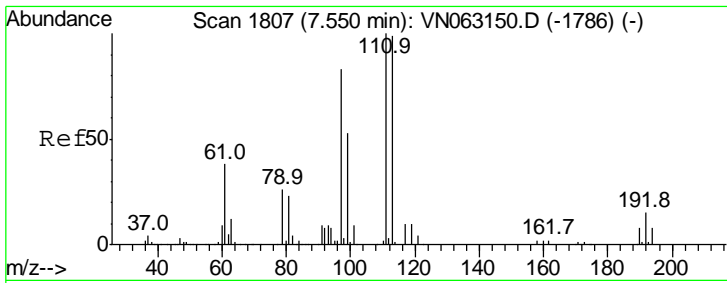
Tgt Ion	Resp	Lower	Upper
65	100		
67	51.0	0.0	104.4



#34  
 1,4-Difluorobenzene  
 Concen: 50.000 ug/l  
 RT: 8.55 min Scan# 2118  
 Delta R.T. -0.00 min  
 Lab File: VN063216.D  
 Acq: 3 Sep 2020 13:36

Tgt Ion	Resp	Lower	Upper
114	100		
63	20.9	0.0	43.0
88	14.3	0.0	31.6

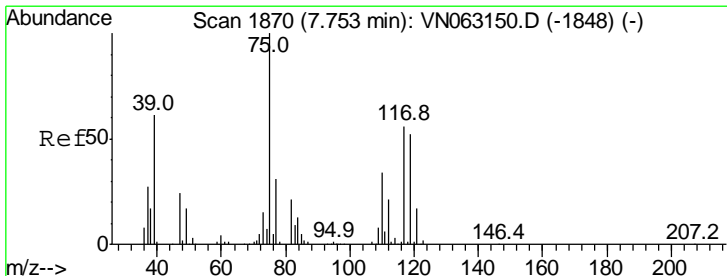
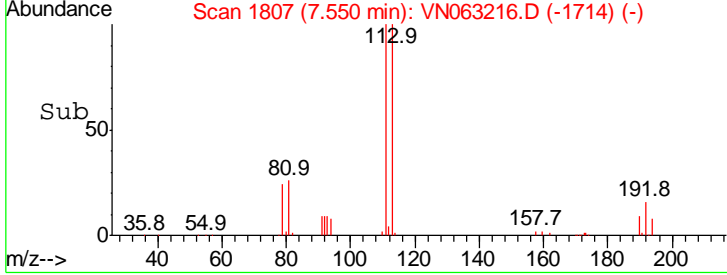
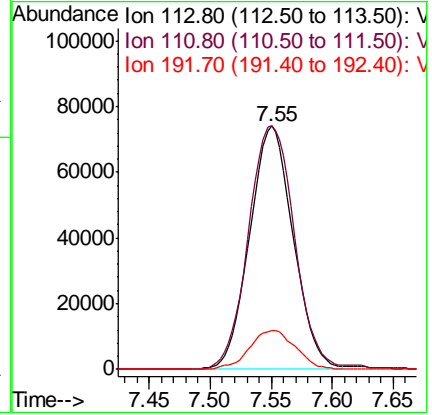
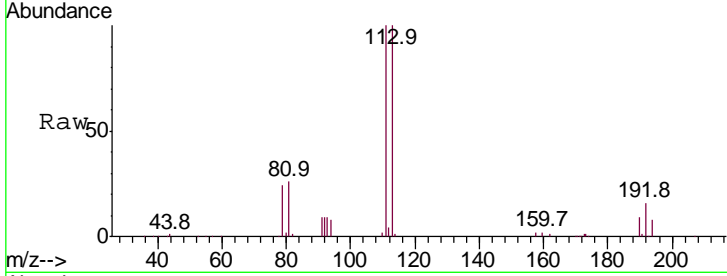




#35  
 Dibromofluoromethane  
 Concen: 48.168 ug/l  
 RT: 7.55 min Scan# 1807  
 Delta R.T. -0.00 min  
 Lab File: VN063216.D  
 Acq: 3 Sep 2020 13:36

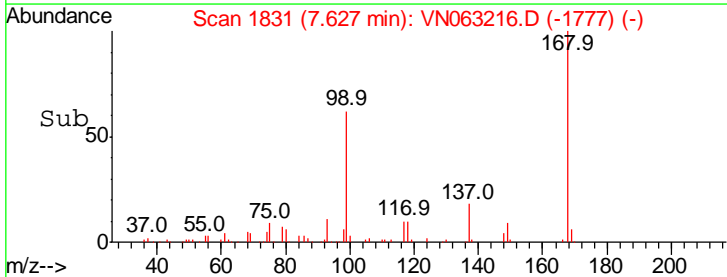
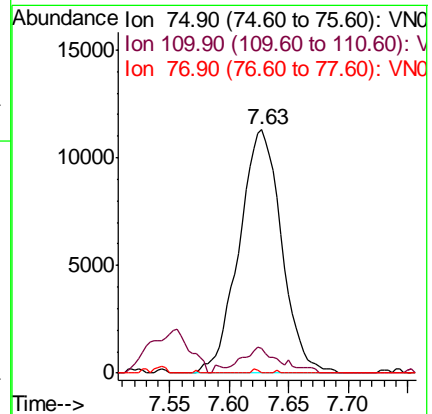
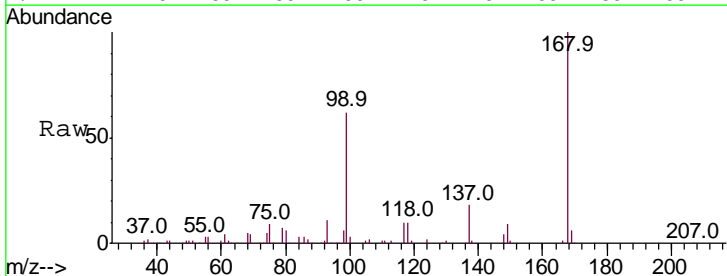
Instrument : MSVOA\_N  
 ClientSampled : PB131386ZHE#05

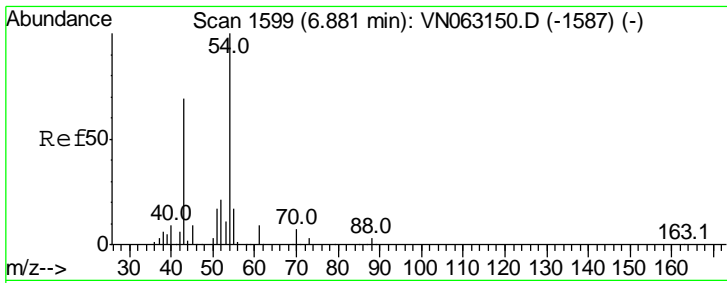
Tgt Ion	Resp	Lower	Upper
113	100		
111	105.8	80.7	121.1
192	16.8	12.6	19.0



#36  
 1,1-Dichloropropene  
 Concen: 4.898 ug/l  
 RT: 7.63 min Scan# 1831  
 Delta R.T. -0.13 min  
 Lab File: VN063216.D  
 Acq: 3 Sep 2020 13:36

Tgt Ion	Resp	Lower	Upper
75	100		
110	9.2	16.6	49.8#
77	0.2	25.4	38.2#

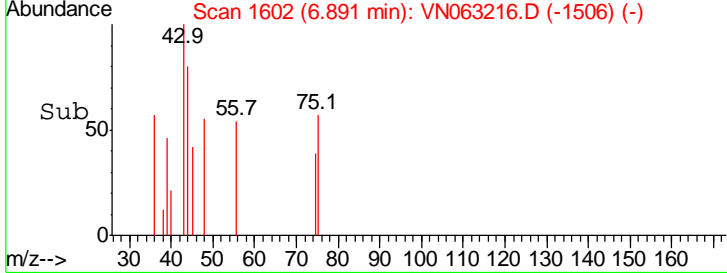
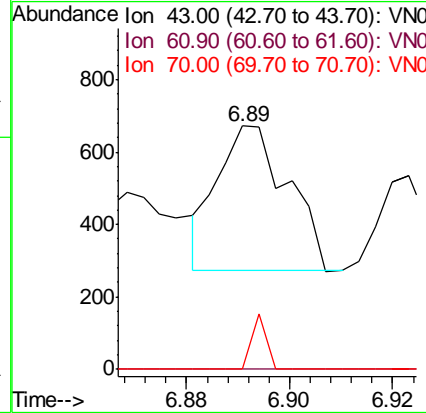
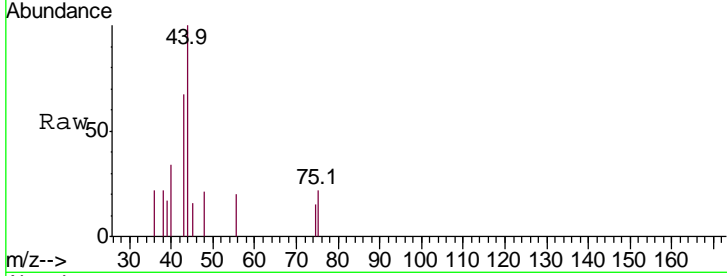




#37  
 Ethyl Acetate  
 Concen: 0.450 ug/l  
 RT: 6.89 min Scan# 1602  
 Delta R.T. 0.01 min  
 Lab File: VN063216.D  
 Acq: 3 Sep 2020 13:36

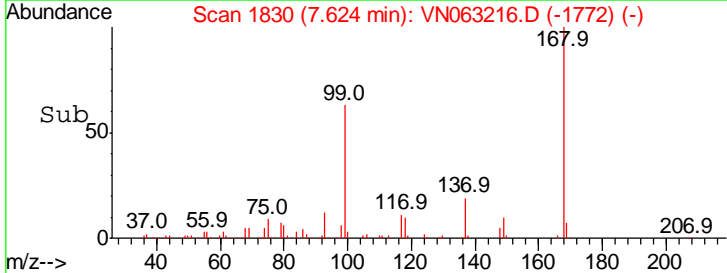
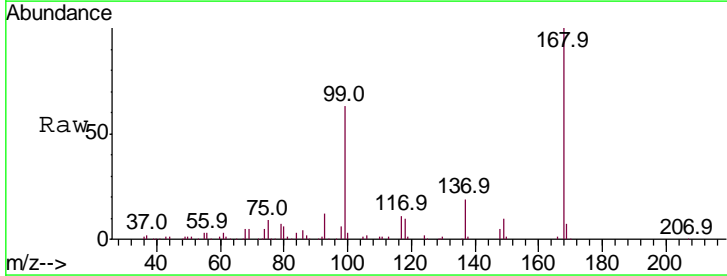
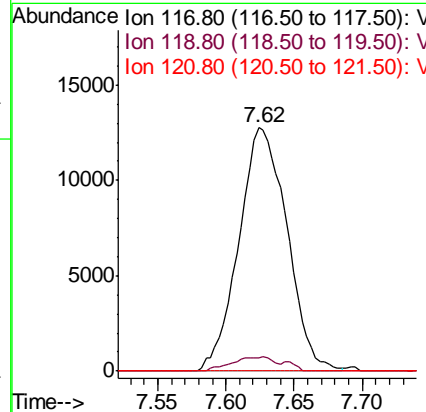
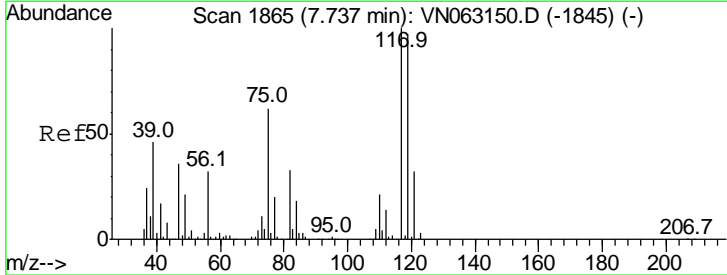
Instrument : MSVOA\_N  
 ClientSampleID : PB131386ZHE#05

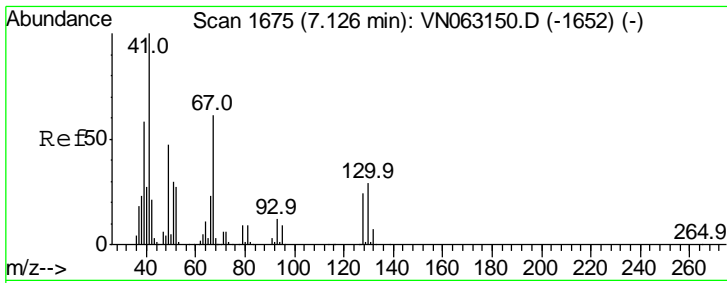
Tgt Ion	Ratio	Lower	Upper
43	100		
61	0.0	10.2	15.4#
70	8.0	3.0	4.6#



#38  
 Carbon Tetrachloride  
 Concen: 5.407 ug/l  
 RT: 7.62 min Scan# 1830  
 Delta R.T. -0.11 min  
 Lab File: VN063216.D  
 Acq: 3 Sep 2020 13:36

Tgt Ion	Ratio	Lower	Upper
117	100		
119	5.7	77.2	115.8#
121	0.0	25.6	38.4#

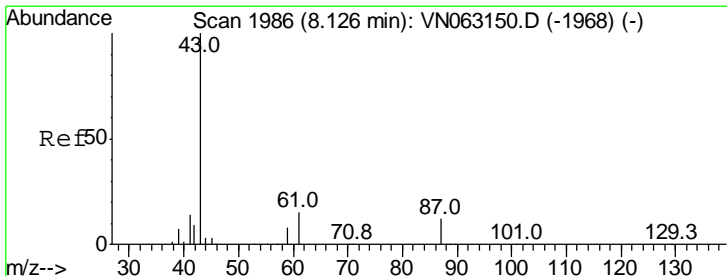
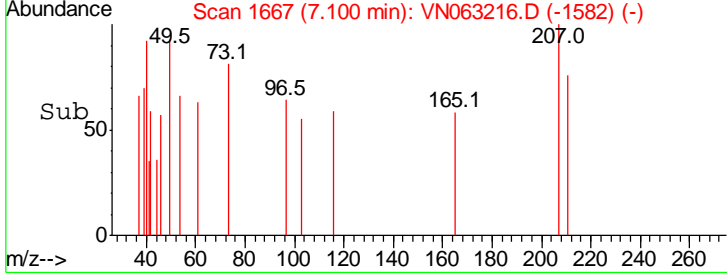
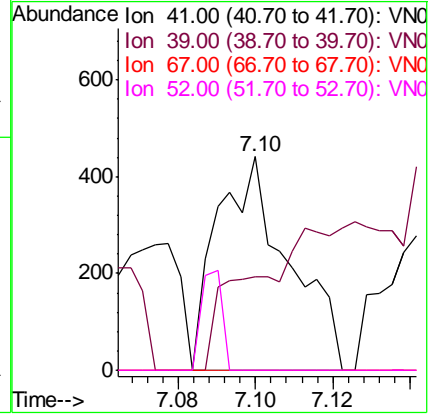
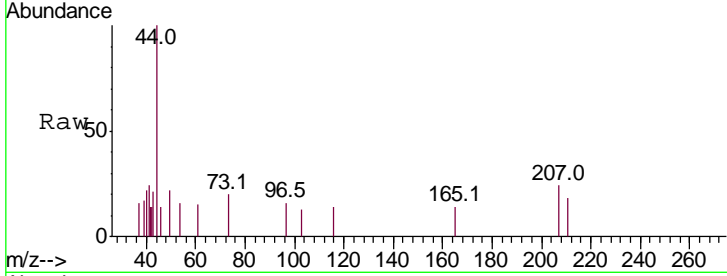




#41  
 Methacrylonitrile  
 Concen: 0.236 ug/l  
 RT: 7.10 min Scan# 1667  
 Delta R.T. -0.03 min  
 Lab File: VN063216.D  
 Acq: 3 Sep 2020 13:36

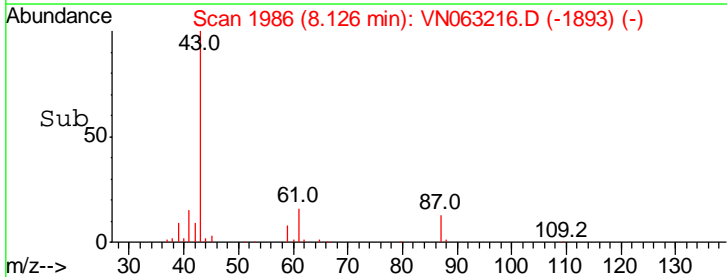
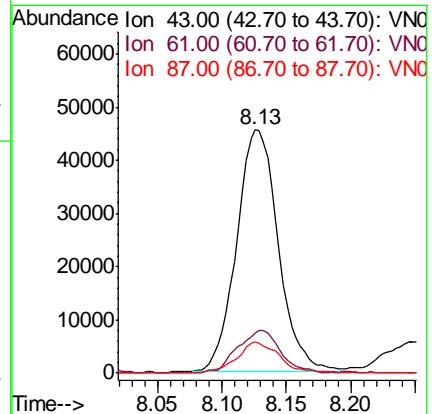
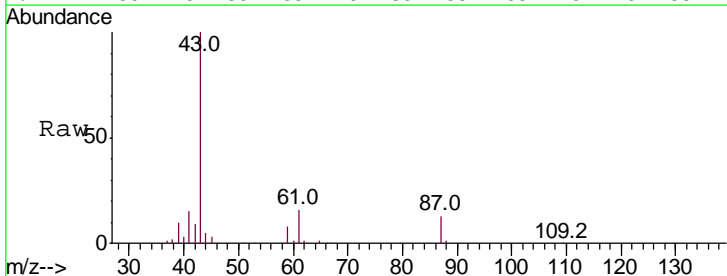
Instrument : MSVOA\_N  
 ClientSampled : PB131386ZHE#05

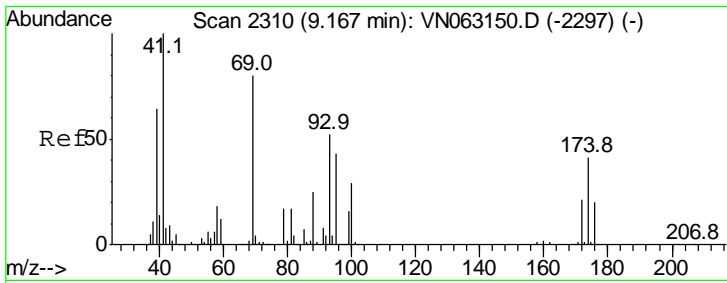
Tgt Ion	Resp	Lower	Upper
41	100		
39	0.0	46.6	70.0#
67	0.0	62.6	94.0#
52	13.8	28.0	42.0#



#43  
 Isopropyl Acetate  
 Concen: 11.033 ug/l  
 RT: 8.13 min Scan# 1986  
 Delta R.T. -0.00 min  
 Lab File: VN063216.D  
 Acq: 3 Sep 2020 13:36

Tgt Ion	Resp	Lower	Upper
43	100		
61	18.2	20.2	30.4#
87	13.0	9.8	14.6

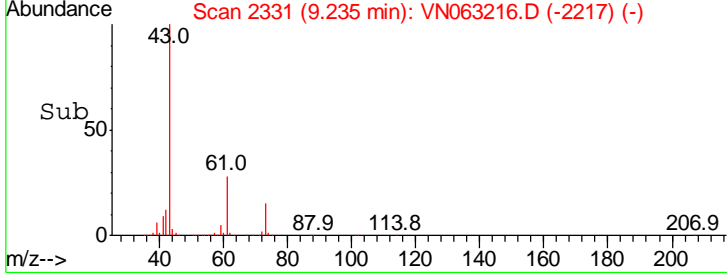
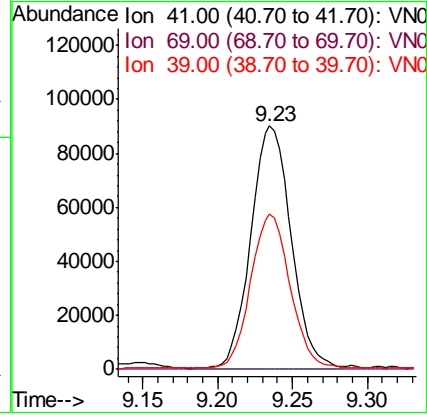
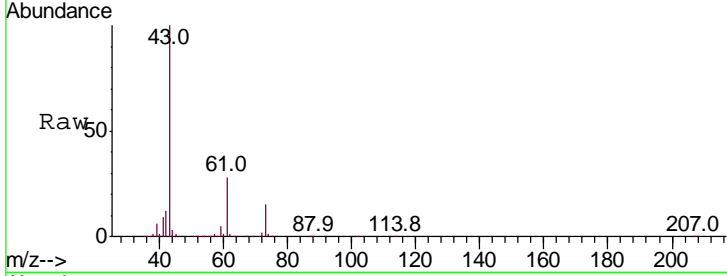




#48  
 Methyl methacrylate  
 Concen: 40.219 ug/l  
 RT: 9.23 min Scan# 2331  
 Delta R.T. 0.07 min  
 Lab File: VN063216.D  
 Acq: 3 Sep 2020 13:36

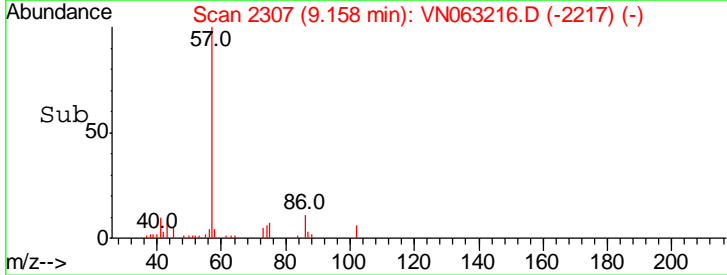
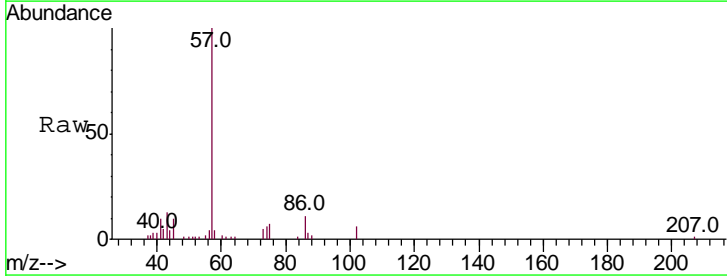
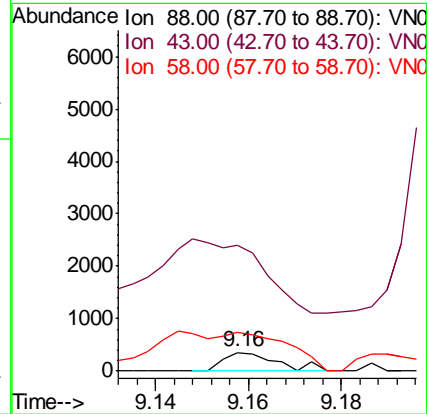
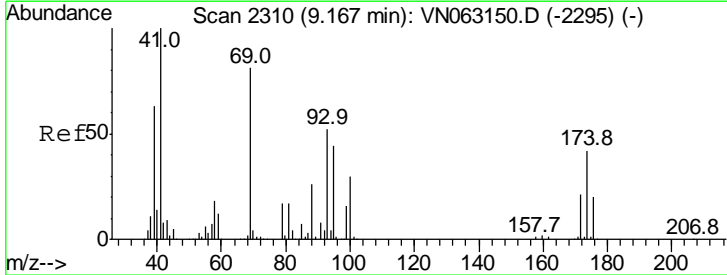
Instrument : MSVOA\_N  
 ClientSampleId : PB131386ZHE#05

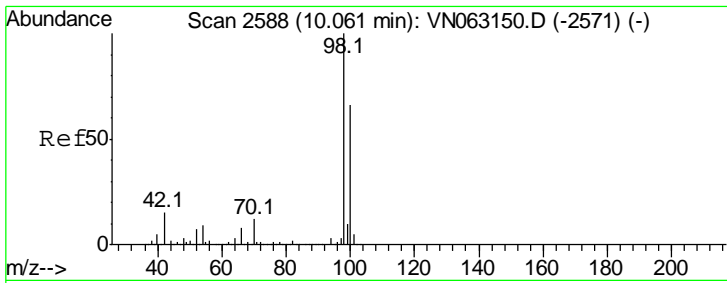
Tgt Ion	Resp	Lower	Upper
41	100		
69	0.2	65.9	98.9#
39	62.1	52.0	78.0



#49  
 1,4-Dioxane  
 Concen: 4.324 ug/l  
 RT: 9.16 min Scan# 2307  
 Delta R.T. -0.01 min  
 Lab File: VN063216.D  
 Acq: 3 Sep 2020 13:36

Tgt Ion	Resp	Lower	Upper
88	100		
43	0.0	28.6	42.8#
58	255.7	53.2	79.8#

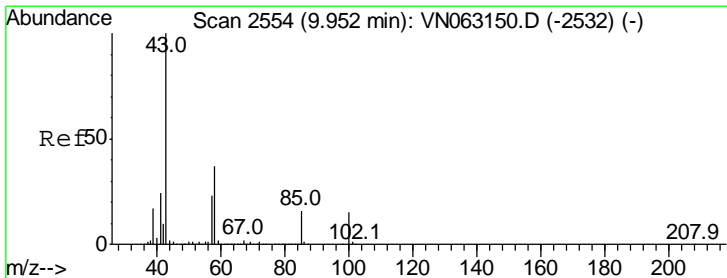
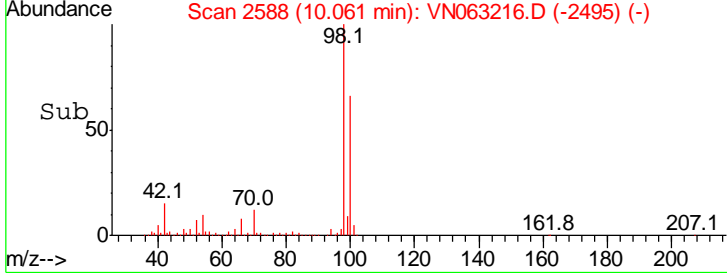
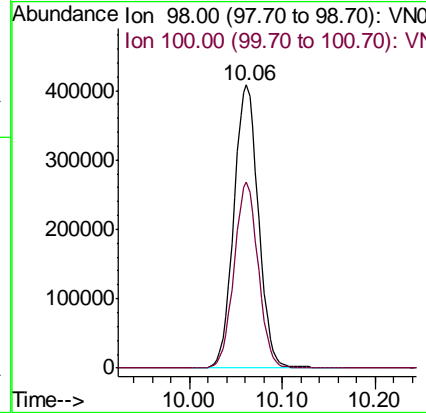
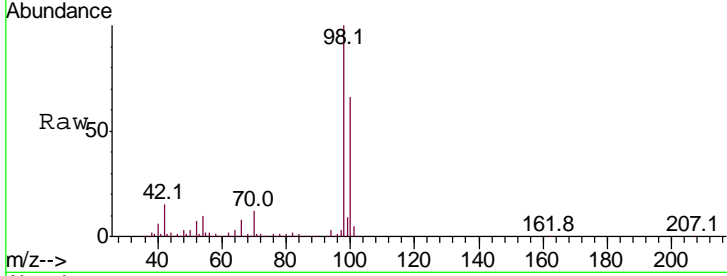




#50  
 Toluene-d8  
 Concen: 51.236 ug/l  
 RT: 10.06 min Scan# 2588  
 Delta R.T. -0.00 min  
 Lab File: VN063216.D  
 Acq: 3 Sep 2020 13:36

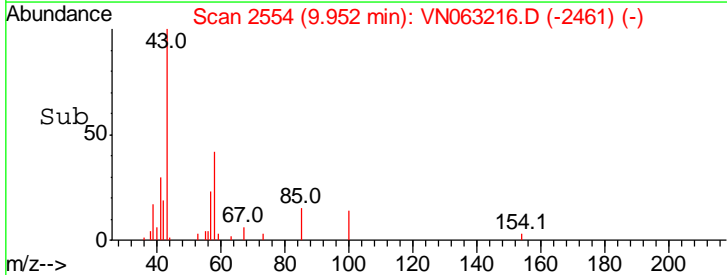
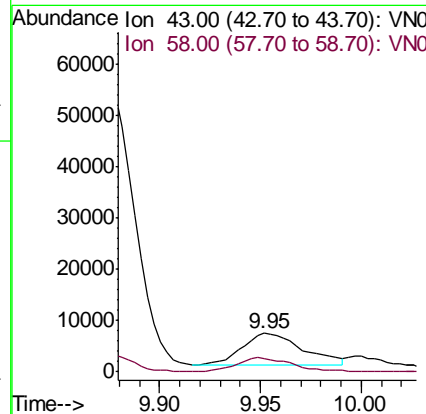
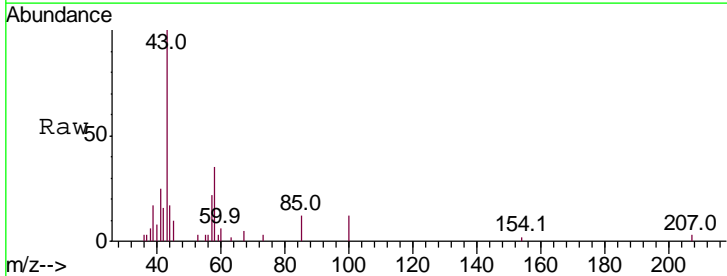
Instrument : MSVOA\_N  
 ClientSampled : PB131386ZHE#05

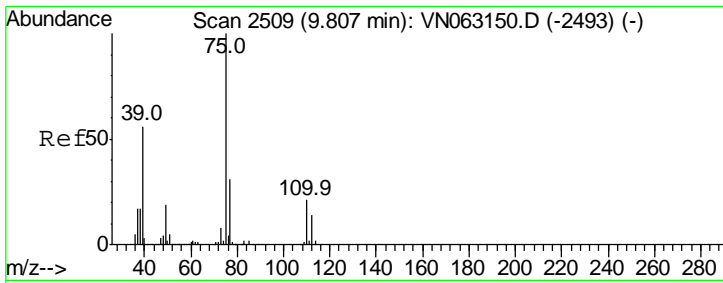
Tgt Ion	Resp	Lower	Upper
98	100		
100	64.4	52.0	78.0



#51  
 4-Methyl-2-Pentanone  
 Concen: 2.520 ug/l  
 RT: 9.95 min Scan# 2554  
 Delta R.T. -0.00 min  
 Lab File: VN063216.D  
 Acq: 3 Sep 2020 13:36

Tgt Ion	Resp	Lower	Upper
43	100		
58	42.5	29.2	43.8

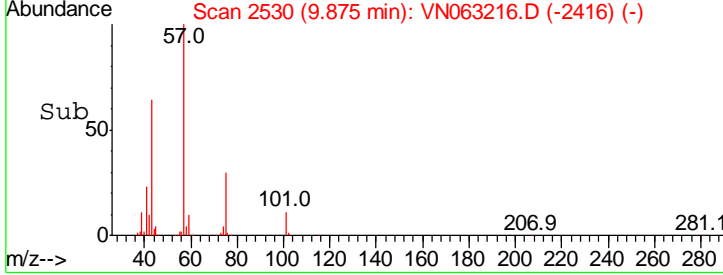
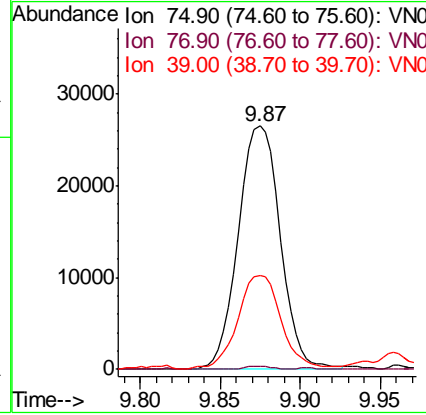
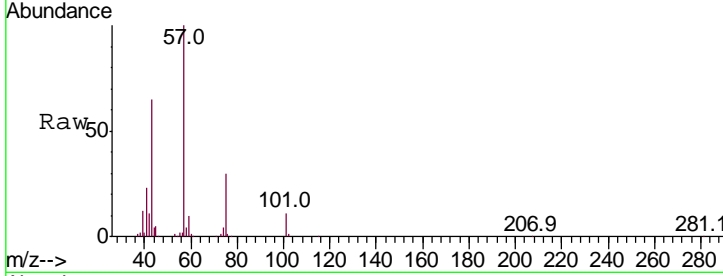




#54  
 cis-1,3-Dichloropropene  
 Concen: 6.568 ug/l  
 RT: 9.87 min Scan# 2530  
 Delta R.T. 0.07 min  
 Lab File: VN063216.D  
 Acq: 3 Sep 2020 13:36

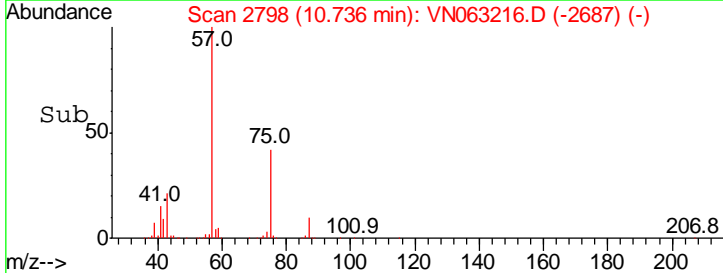
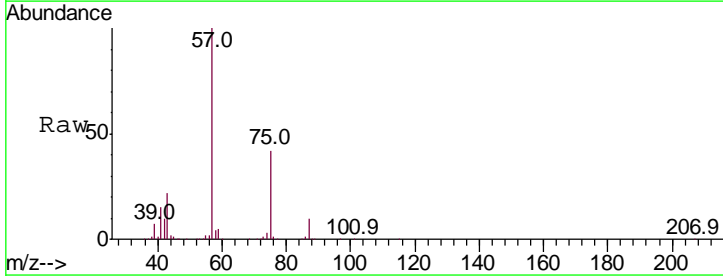
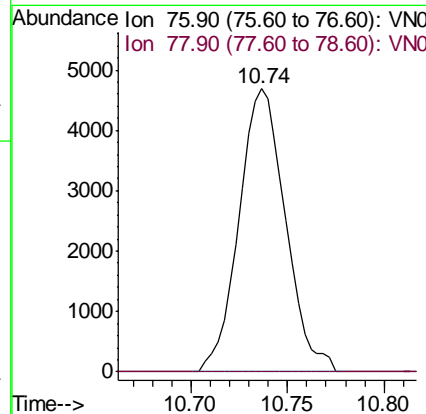
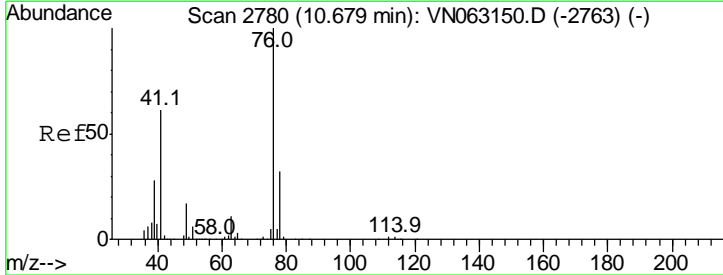
Instrument : MSVOA\_N  
 ClientSampled : PB131386ZHE#05

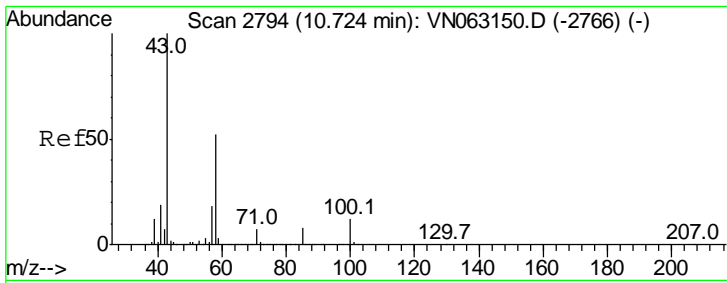
Tgt Ion	Resp	Lower	Upper
75	100		
77	1.0	24.8	37.2#
39	38.1	45.0	67.6#



#57  
 1,3-Dichloropropane  
 Concen: 1.100 ug/l  
 RT: 10.74 min Scan# 2798  
 Delta R.T. 0.06 min  
 Lab File: VN063216.D  
 Acq: 3 Sep 2020 13:36

Tgt Ion	Resp	Lower	Upper
76	100		
78	0.0	25.5	38.3#

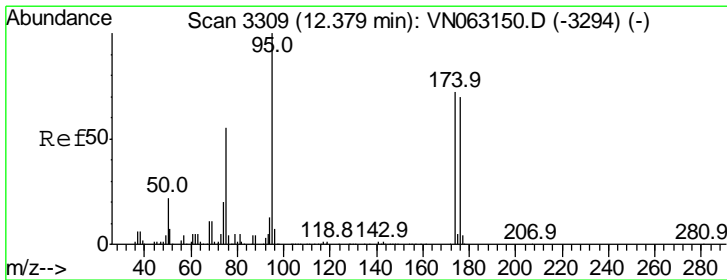
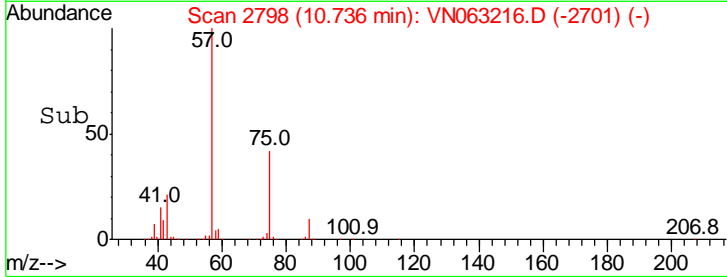
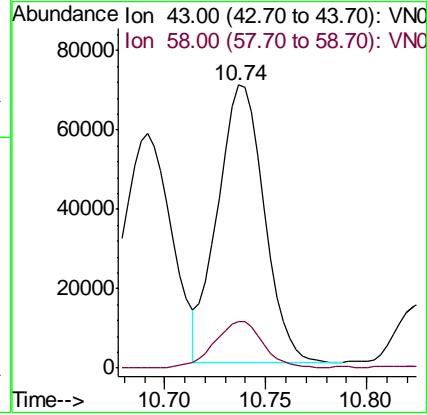
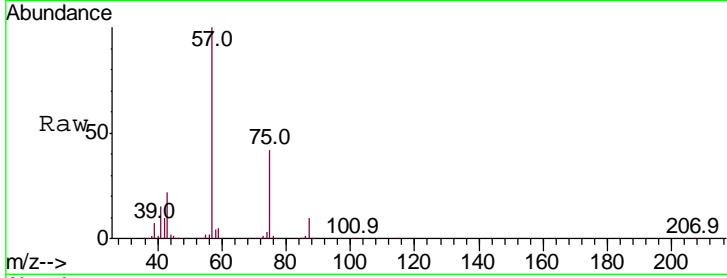




#59  
 2-Hexanone  
 Concen: 31.804 ug/l  
 RT: 10.74 min Scan# 2798  
 Delta R.T. 0.01 min  
 Lab File: VN063216.D  
 Acq: 3 Sep 2020 13:36

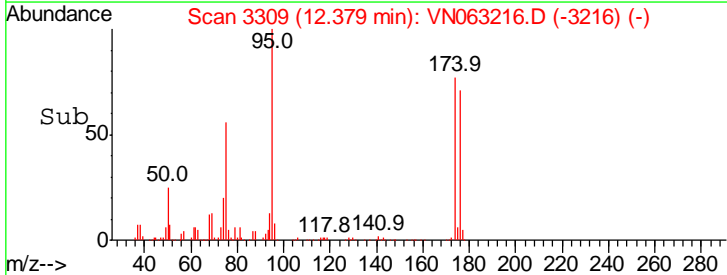
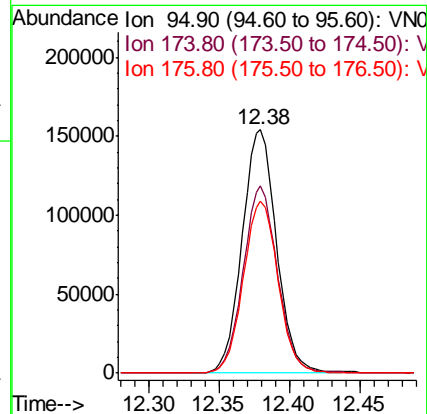
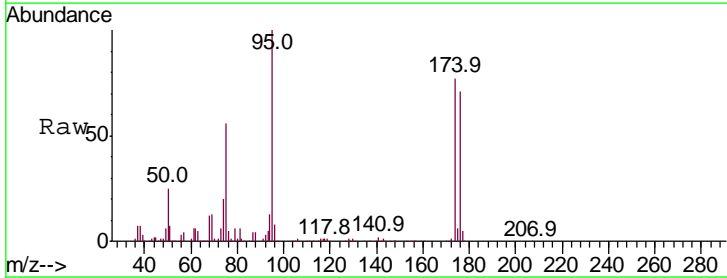
Instrument :  
 MSVOA\_N  
 ClientSampled :  
 PB131386ZHE#05

Tgt Ion	Resp	Lower	Upper
43	112794		
58	17.7	25.9	77.8#

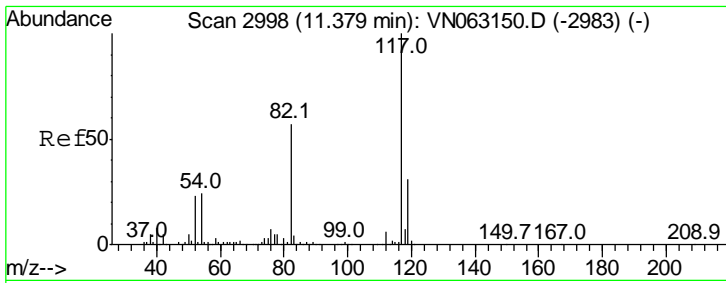


#62  
 4-Bromofluorobenzene  
 Concen: 51.555 ug/l  
 RT: 12.38 min Scan# 3309  
 Delta R.T. -0.00 min  
 Lab File: VN063216.D  
 Acq: 3 Sep 2020 13:36

Tgt Ion	Resp	Lower	Upper
95	263773		
174	76.6	0.0	143.8
176	71.5	0.0	138.4



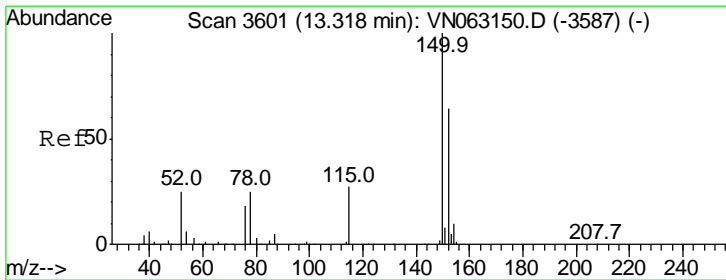
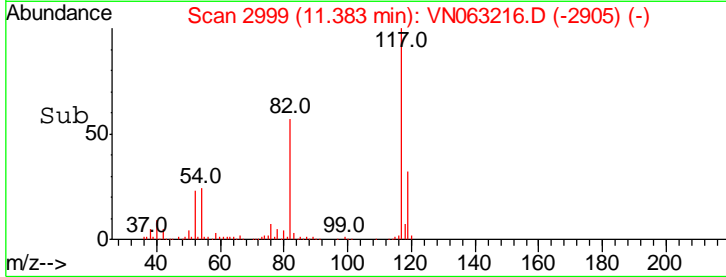
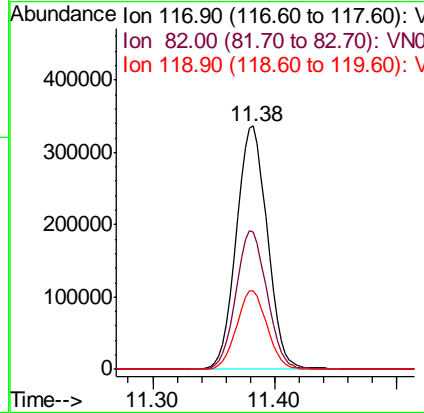
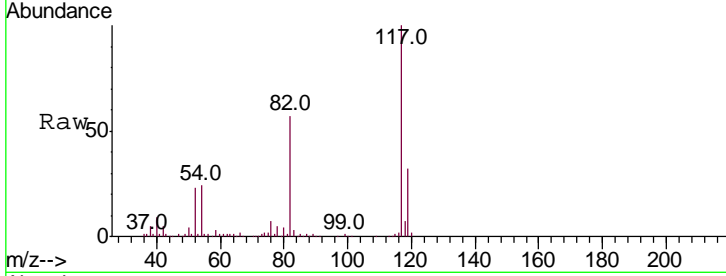




#63  
 Chlorobenzene-d5  
 Concen: 50.000 ug/l  
 RT: 11.38 min Scan# 2999  
 Delta R.T. 0.00 min  
 Lab File: VN063216.D  
 Acq: 3 Sep 2020 13:36

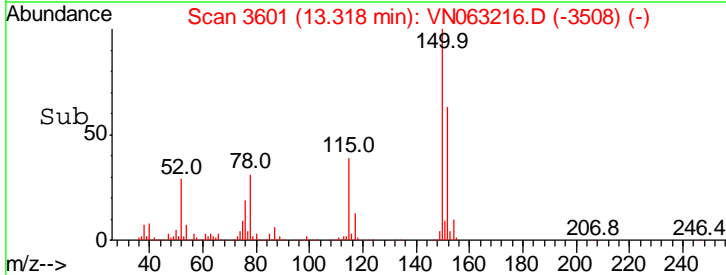
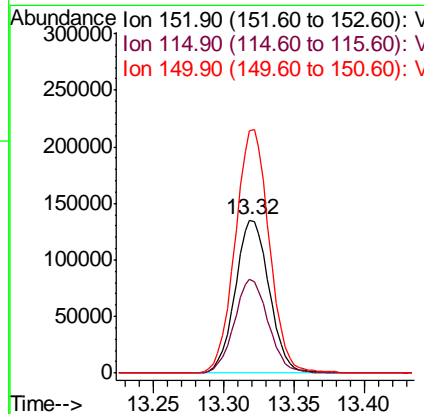
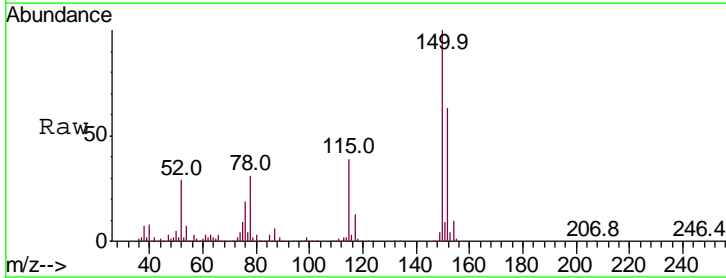
Instrument : MSVOA\_N  
 ClientSampled : PB131386ZHE#05

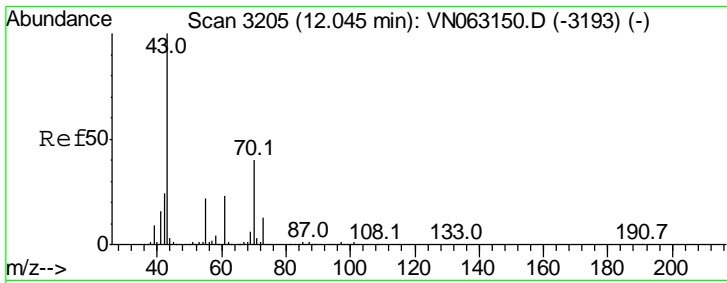
Tgt Ion	Resp	Lower	Upper
117	100		
82	56.6	45.4	68.0
119	32.5	24.6	37.0



#72  
 1,4-Dichlorobenzene-d4  
 Concen: 50.000 ug/l  
 RT: 13.32 min Scan# 3601  
 Delta R.T. -0.00 min  
 Lab File: VN063216.D  
 Acq: 3 Sep 2020 13:36

Tgt Ion	Resp	Lower	Upper
152	100		
115	61.3	32.0	96.2
150	159.6	0.0	353.0

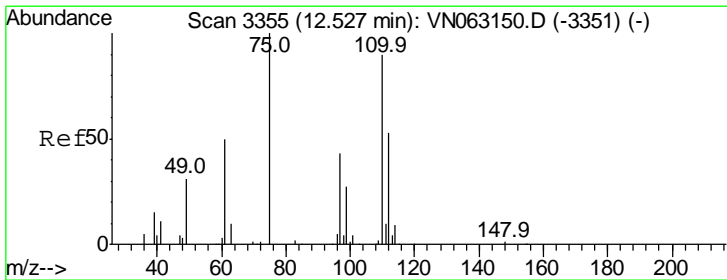
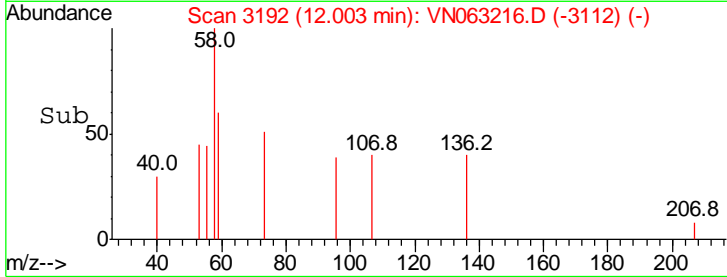
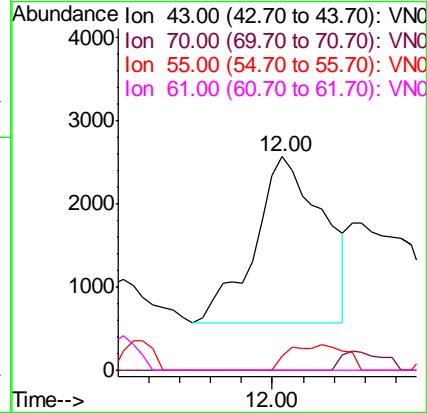
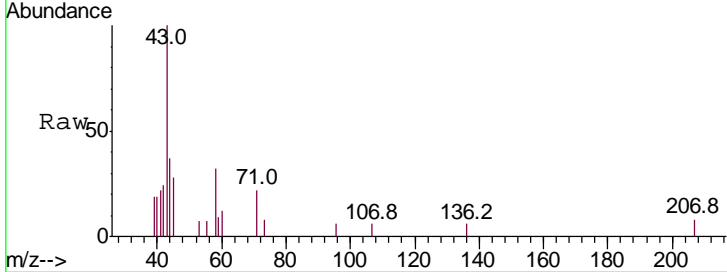




#74  
 N-amyl acetate  
 Concen: 0.421 ug/l  
 RT: 12.00 min Scan# 3192  
 Delta R.T. -0.04 min  
 Lab File: VN063216.D  
 Acq: 3 Sep 2020 13:36

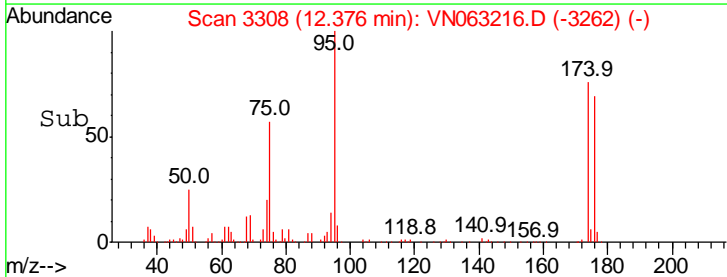
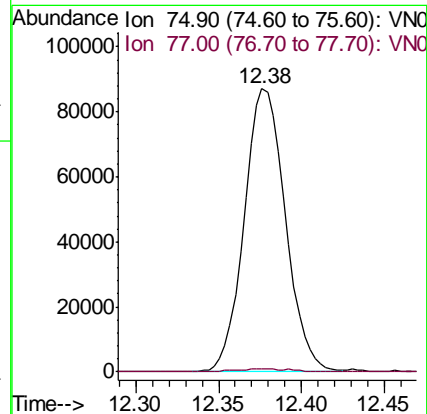
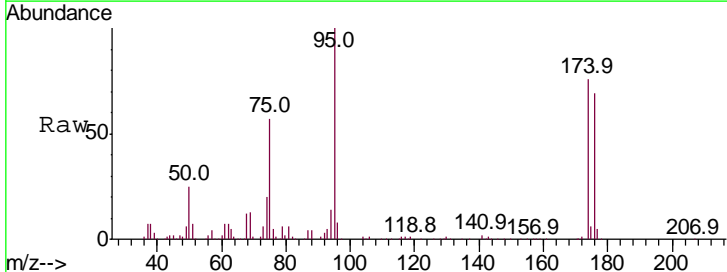
Instrument : MSVOA\_N  
 ClientSampled : PB131386ZHE#05

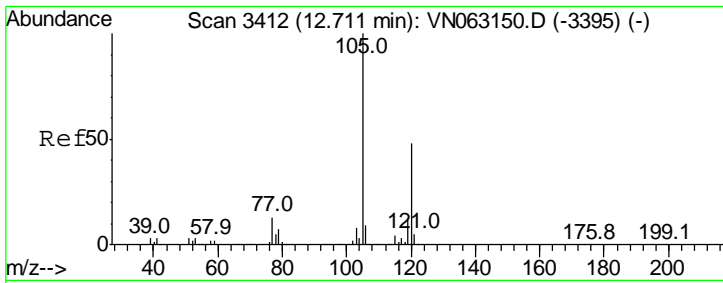
Tgt Ion	Resp	Lower	Upper
43	100		
70	0.0	32.1	48.1#
55	0.0	17.4	26.0#
61	0.0	18.6	27.8#



#76  
 1,2,3-Trichloropropane  
 Concen: 33.414 ug/l  
 RT: 12.38 min Scan# 3308  
 Delta R.T. -0.15 min  
 Lab File: VN063216.D  
 Acq: 3 Sep 2020 13:36

Tgt Ion	Resp	Lower	Upper
75	100		
77	0.6	0.0	0.0#

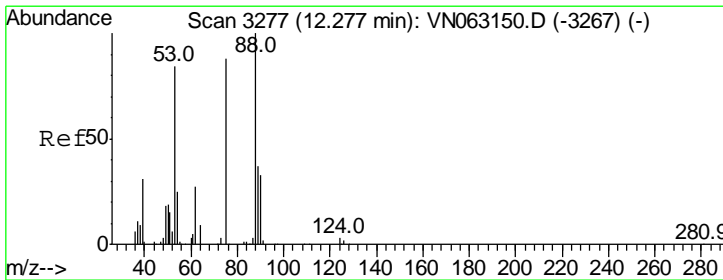
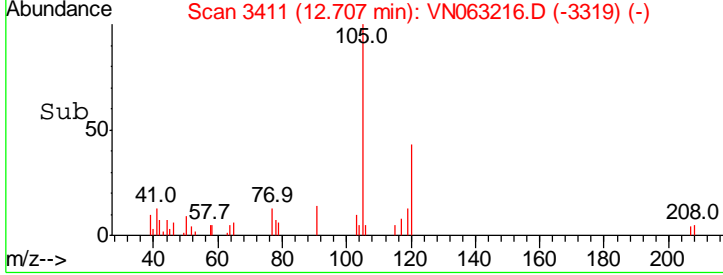
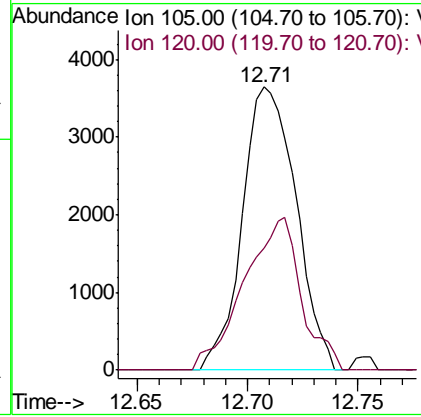
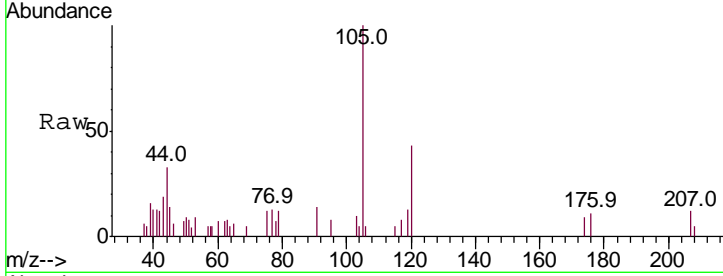




#80  
 1,3,5-Trimethylbenzene  
 Concen: 0.421 ug/l  
 RT: 12.71 min Scan# 3411  
 Delta R.T. -0.00 min  
 Lab File: VN063216.D  
 Acq: 3 Sep 2020 13:36

Instrument : MSVOA\_N  
 ClientSampled : PB131386ZHE#05

Tgt Ion	Resp	Lower	Upper
105	100		
120	57.3	24.2	72.6



#81  
 trans-1,4-Dichloro-2-butene  
 Concen: 80.761 ug/l  
 RT: 12.38 min Scan# 3308  
 Delta R.T. 0.10 min  
 Lab File: VN063216.D  
 Acq: 3 Sep 2020 13:36

Tgt Ion	Resp	Lower	Upper
75	100		
53	0.0	78.7	118.1#
89	0.0	35.3	52.9#

