

Data Path : Z:\VOASRV\HPCHEM1\MSVOA N\DATA\VN090320\
 Data File : VN063230.D
 Acq On : 3 Sep 2020 19:12
 Operator : JC/MD
 Sample : L3902-10
 Misc : 5.00mL/MSVOA N/WATER
 ALS Vial : 24 Sample Multiplier: 1

Instrument :
 MSVOA_N
 ClientSampleId :
 SA-PZ145I-20200901

Integration Parameters: RTEINT.P
 Integrator: RTE
 Smoothing : ON Filtering: 5
 Sampling : 1 Min Area: 3 % of largest Peak
 Start Thrs: 0.2 Max Peaks: 100
 Stop Thrs : 0 Peak Location: TOP

If leading or trailing edge < 100 prefer < Baseline drop else tangent >
 Peak separation: 5

Method : Z:\VOASRV\HPCHEM1\MSVOA_N\METHODS\82N083120W.M
 Title : SW846 8260

Signal : TIC

peak #	R.T. min	first scan	max scan	last scan	PK TY	peak height	corr. area	corr. % max.	% of total
1	2.425	202	213	214	rBV	49473	70212	3.61%	0.693%
2	5.801	1246	1263	1281	rBV2	23585	74743	3.84%	0.737%
3	7.550	1782	1807	1819	rBV2	238120	606254	31.14%	5.981%
4	7.627	1819	1831	1850	rVB	382692	894261	45.93%	8.822%
5	7.987	1925	1943	1962	rBV2	268371	644878	33.12%	6.362%
6	8.550	2102	2118	2136	rBV	648868	1342132	68.93%	13.241%
7	10.061	2572	2588	2613	rBV	1048225	1947152	100.00%	19.209%
8	11.380	2983	2998	3020	rBV	1030231	1803384	92.62%	17.791%
9	12.379	3294	3309	3327	rBV	731848	1274803	65.47%	12.576%
10	13.318	3588	3601	3620	rBV2	852745	1478678	75.94%	14.588%

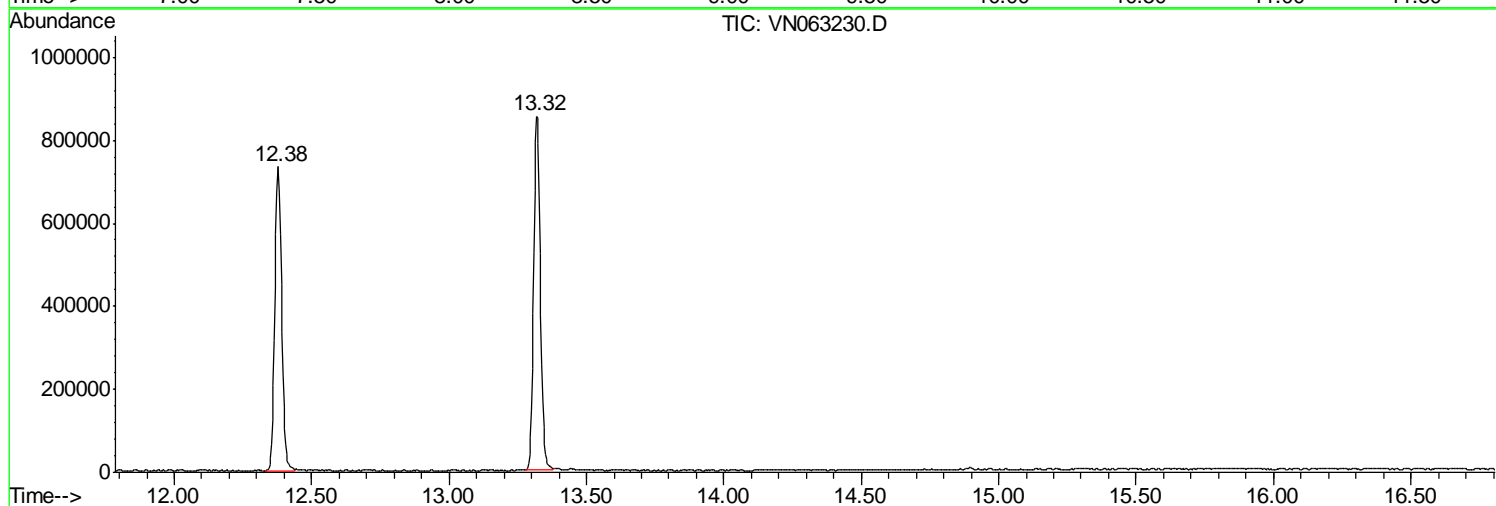
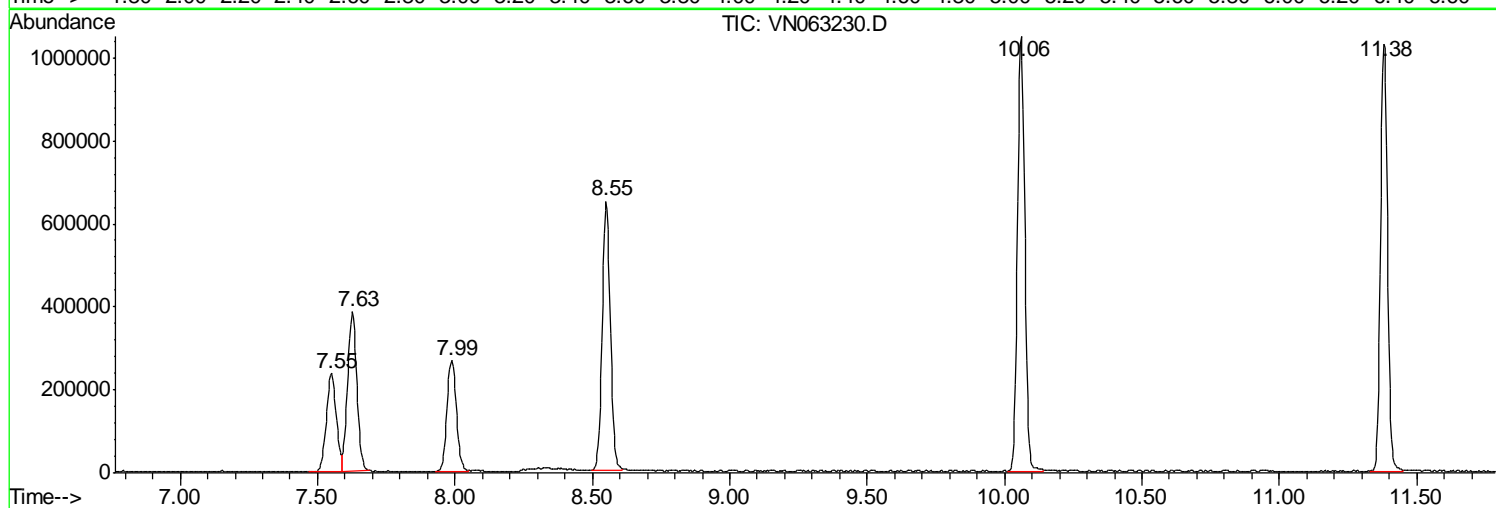
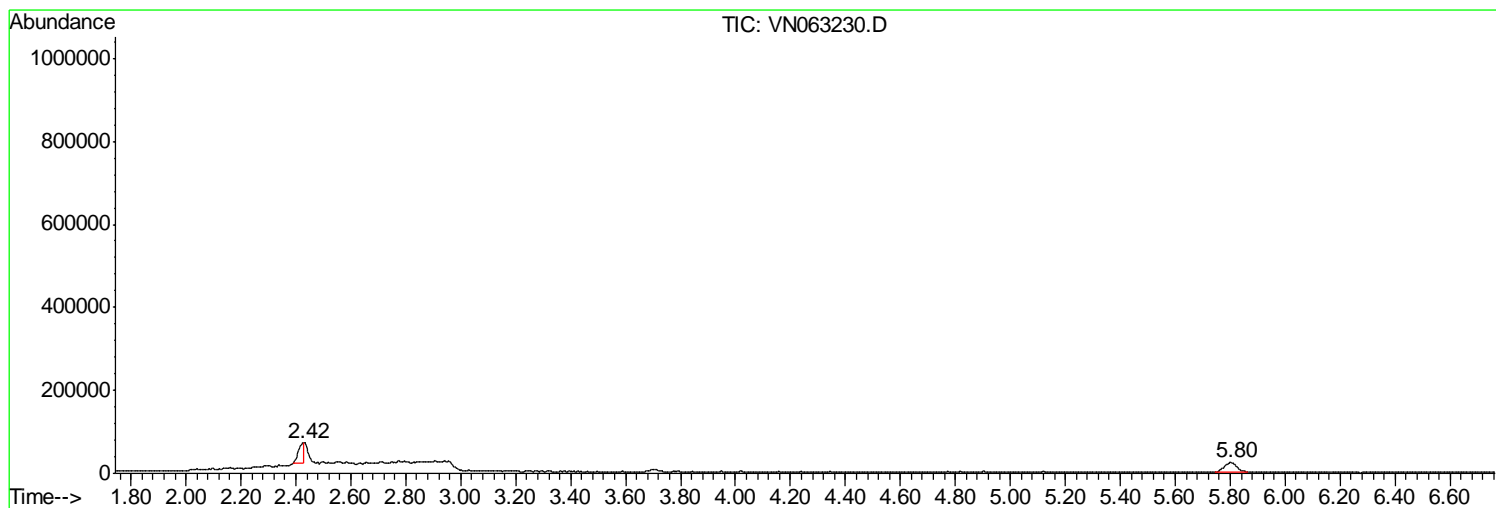
Sum of corrected areas: 10136497

Data Path : Z:\VOASRV\HPCHEM1\MSVOA N\DATA\VN090320\
Data File : VN063230.D
Acq On : 3 Sep 2020 19:12
Operator : JC/MD
Sample : L3902-10
Misc : 5.00mL/MSVOA N/WATER
ALS Vial : 24 Sample Multiplier: 1

Instrument :
MSVOA_N
ClientSampleId :
SA-PZ145I-20200901

Quant Method : Z:\VOASRV\HPCHEM1\MSVOA_N\METHODS\82N083120W.M
Quant Title : SW846 8260

TIC Library : C:\DATABASE\NIST11.L
TIC Integration Parameters: LSCINT.P



Data Path : Z:\VOASRV\HPCHEM1\MSVOA_N\DATA\VN090320\
Data File : VN063230.D
Acq On : 3 Sep 2020 19:12
Operator : JC/MD
Sample : L3902-10
Misc : 5.00mL/MSVOA_N/WATER
ALS Vial : 24 Sample Multiplier: 1

Instrument :
MSVOA_N
ClientSampleId :
SA-PZ145I-20200901

Quant Method : Z:\VOASRV\HPCHEM1\MSVOA_N\METHODS\82N083120W.M
Quant Title : SW846 8260

TIC Library : C:\DATABASE\NIST11.L
TIC Integration Parameters: LSCINT.P

No Library Search Compounds Detected

Data Path : Z:\VOASRV\HPCHEM1\MSVOA_N\DATA\VN090320\
Data File : VN063230.D
Acq On : 3 Sep 2020 19:12
Operator : JC/MD
Sample : L3902-10
Misc : 5.00mL/MSVOA_N/WATER
ALS Vial : 24 Sample Multiplier: 1

Instrument :
MSVOA_N
ClientSampleId :
SA-PZ145I-20200901

Quant Method : Z:\VOASRV\HPCHEM1\MSVOA_N\METHODS\82N083120W.M
Quant Title : SW846 8260

TIC Library : C:\DATABASE\NIST11.L
TIC Integration Parameters: LSCINT.P

TIC Top Hit name	RT	EstConc	Units	Response	--Internal Standard--			
					#	RT	Resp	Conc
