

Data Path : Z:\voasrv\HPCHEM1\MSVOA\_N\Data\VN090321\  
 Data File : VN068405.D  
 Acq On : 3 Sep 2021 13:50  
 Operator : JC/MD  
 Sample : VSTDICV020  
 Misc : 5.00mL/MSVOA\_N/WATER  
 ALS Vial : 8 Sample Multiplier: 1

Instrument :  
 MSVOA\_N  
 ClientSampled :

Quant Time: Sep 04 03:10:06 2021  
 Quant Method : Z:\voasrv\HPCHEM1\MSVOA\_N\methods\624N090321W.M  
 Quant Title : METHOD 624 VOLATILE ORGANIC ANALYSIS  
 QLast Update : Fri Sep 03 13:24:01 2021  
 Response via : Initial Calibration

Compound	R.T.	QIon	Response	Conc	Units	Dev(Min)
-----						
Internal Standards						
1) Bromochloromethane	7.662	128	113359	30.000	ug/l	0.00
28) 1,4-Difluorobenzene	8.971	114	606253	30.000	ug/l	# 0.00
57) Chlorobenzene-d5	11.747	117	544897	30.000	ug/l	# 0.00
System Monitoring Compounds						
27) 1,2-Dichloroethane-d4	8.440	65	208146	30.971	ug/l	0.00
Spiked Amount	30.000	Range 91 - 110	Recovery	=	103.233%	
60) 4-Bromofluorobenzene	12.734	95	235973	30.580	ug/l	0.00
Spiked Amount	30.000	Range 63 - 112	Recovery	=	101.933%	
63) Toluene-d8	10.443	98	738095	30.417	ug/l	0.00
Spiked Amount	30.000	Range 91 - 112	Recovery	=	101.400%	
Target Compounds						
						Qvalue
2) Dichlorodifluoromethane	2.078	85	121563	21.179	ug/l	97
3) Chloromethane	2.309	50	108404	20.874	ug/l	98
4) Vinyl Chloride	2.451	62	160875	20.789	ug/l	91
5) Bromomethane	2.859	94	166441	23.457	ug/l	92
7) Trichlorofluoromethane	3.384	101	220577	20.839	ug/l	96
8) Diethyl Ether	3.832	74	68212	20.288	ug/l	77
9) 1,1,2-Trichlorotrifluo...	4.221	101	124847	20.746	ug/l	82
10) 1,1-Dichloroethene	4.191	96	114831	20.308	ug/l	# 77
11) Methyl Iodide	4.433	142	162268	17.838	ug/l	85
12) Methyl Acetate	4.859	43	114652	20.146	ug/l	# 83
13) Acrolein	4.047	56	43583	85.441	ug/l	# 60
14) Acrylonitrile	5.559	53	234514	101.619	ug/l	99
15) Acetone	4.291	58	79276	116.875	ug/l	80
16) Carbon Disulfide	4.540	76	303221	20.521	ug/l	99
17) Allyl chloride	4.851	41	144701	20.892	ug/l	89
18) Methylene Chloride	5.103	84	128042	20.691	ug/l	# 82
19) trans-1,2-Dichloroethene	5.608	96	126078	20.003	ug/l	# 77
20) Diisopropyl ether	6.498	45	313204	20.691	ug/l	# 93
21) 1,1-Dichloroethane	6.393	63	203037	20.282	ug/l	# 93
22) cis-1,2-Dichloroethene	7.327	96	146817	20.047	ug/l	# 79
23) tert-Butyl Alcohol	5.364	59	96383	113.787	ug/l	# 100
24) Methyl tert-Butyl Ether	5.618	73	368728	20.071	ug/l	# 89
25) Chloroform	7.820	83	235323	20.014	ug/l	99
26) Cyclohexane	8.099	56	179841	20.509	ug/l	# 80
29) 1,1-Dichloropropene	8.225	75	170845	19.644	ug/l	90
30) 2-Butanone	7.335	43	313914	100.881	ug/l	# 87
31) 2,2-Dichloropropane	7.329	77	197477	19.938	ug/l	# 83
32) 1,1,1-Trichloroethane	8.016	97	221750	19.412	ug/l	92
33) Carbon Tetrachloride	8.209	117	201910	19.131	ug/l	96
34) Benzene	8.461	78	499755	19.440	ug/l	# 93
35) Methacrylonitrile	7.635	41	58691	19.306	ug/l	84
36) 1,2-Dichloroethane	8.531	62	169020	19.636	ug/l	# 94
37) Trichloroethene	9.220	130	159836	19.451	ug/l	# 75
38) Methylcyclohexane	9.462	83	221750	19.641	ug/l	84
39) 1,2-Dichloropropane	9.491	63	116587	19.130	ug/l	100
40) Dibromomethane	9.580	93	94674	19.630	ug/l	76
41) Bromodichloromethane	9.765	83	179922	19.309	ug/l	# 99
42) Vinyl Acetate	6.436	43	1153940	98.050	ug/l	# 91
43) Ethyl Acetate	7.413	43	126782	20.489	ug/l	# 74

Data Path : Z:\voasrv\HPCHEM1\MSVOA\_N\Data\VN090321\  
 Data File : VN068405.D  
 Acq On : 3 Sep 2021 13:50  
 Operator : JC/MD  
 Sample : VSTDICV020  
 Misc : 5.00mL/MSVOA\_N/WATER  
 ALS Vial : 8 Sample Multiplier: 1

Instrument :  
 MSVOA\_N  
 ClientSampled :

Quant Time: Sep 04 03:10:06 2021  
 Quant Method : Z:\voasrv\HPCHEM1\MSVOA\_N\methods\624N090321W.M  
 Quant Title : METHOD 624 VOLATILE ORGANIC ANALYSIS  
 QLast Update : Fri Sep 03 13:24:01 2021  
 Response via : Initial Calibration

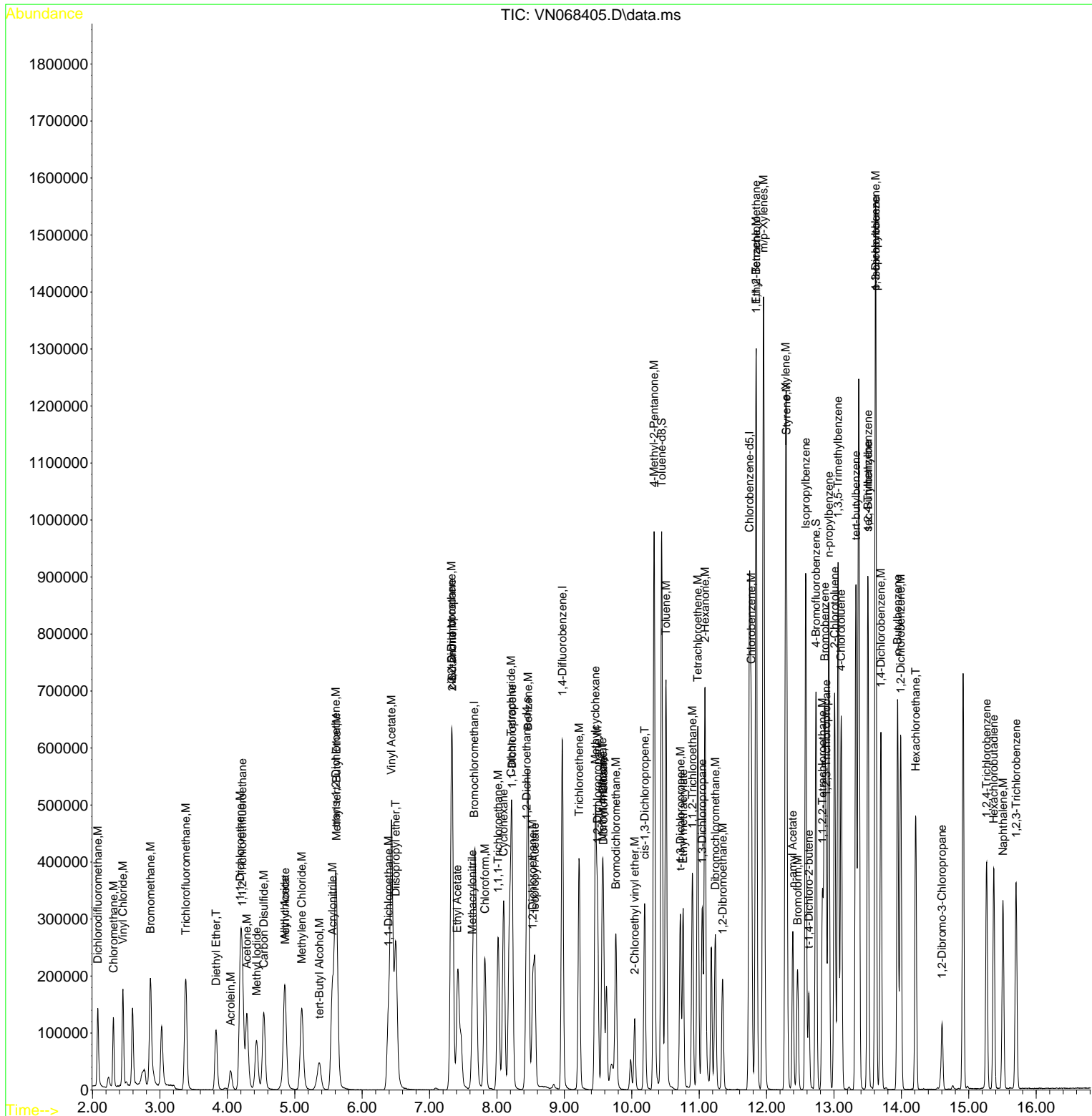
Compound	R.T.	QIon	Response	Conc	Units	Dev(Min)
44) Isopropyl Acetate	8.560	43	219254	19.504	ug/l	91
45) 1,4-Dioxane	9.572	88	41070	408.717	ug/l #	85
46) Methyl methacrylate	9.561	41	88425	18.605	ug/l	83
47) n-amyl Acetate	12.388	43	144625	18.804	ug/l #	88
48) t-1,3-Dichloropropene	10.722	75	178534	19.469	ug/l	100
49) cis-1,3-Dichloropropene	10.191	75	196713	19.449	ug/l #	83
50) 1,1,2-Trichloroethane	10.899	97	131847	19.379	ug/l	95
51) Ethyl methacrylate	10.762	69	167854	19.189	ug/l	80
52) 1,3-Dichloropropane	11.047	76	201926	19.657	ug/l	98
53) Dibromochloromethane	11.240	129	158704	19.355	ug/l	97
54) 1,2-Dibromoethane	11.347	107	139259	19.582	ug/l	99
55) 2-Chloroethyl vinyl ether	10.044	63	55576	94.020	ug/l #	93
56) Bromoform	12.460	173	116795	18.614	ug/l #	98
58) 4-Methyl-2-Pentanone	10.331	43	637533	100.545	ug/l #	89
59) 2-Hexanone	11.087	43	449538	102.159	ug/l	88
61) Tetrachloroethene	10.980	164	162456	19.283	ug/l	89
62) Toluene	10.508	91	591674	19.790	ug/l	99
64) Chlorobenzene	11.773	112	375930	19.503	ug/l	100
65) 1,1,1,2-Tetrachloroethane	11.843	131	149007	19.308	ug/l	98
66) Ethyl Benzene	11.846	91	628299	19.523	ug/l	92
67) m/p-Xylenes	11.956	106	520596	39.451	ug/l	77
68) o-Xylene	12.283	106	253095	19.802	ug/l	76
69) Styrene	12.296	104	392071	19.429	ug/l #	90
70) Isopropylbenzene	12.581	105	653814	19.860	ug/l	94
71) 1,1,2,2-Tetrachloroethane	12.830	83	167653	19.913	ug/l	98
72) 1,2,3-Trichloropropane	12.884	75	192021	27.822	ug/l	68
73) Bromobenzene	12.862	156	177090	19.437	ug/l	51
74) n-propylbenzene	12.924	91	707622	19.899	ug/l	88
75) 2-Chlorotoluene	13.010	91	422080	20.001	ug/l #	100
76) 1,3,5-Trimethylbenzene	13.061	105	540215	19.834	ug/l	90
77) t-1,4-Dichloro-2-butene	12.626	75	39895	19.066	ug/l	85
78) 4-Chlorotoluene	13.106	91	406185	19.630	ug/l	80
79) tert-butylbenzene	13.326	119	496132	19.924	ug/l	81
80) 1,2,4-Trimethylbenzene	13.503	105	663037	25.062	ug/l	100
81) sec-Butylbenzene	13.503	105	663037	19.835	ug/l	90
82) p-Isopropyltoluene	13.619	119	564773	19.632	ug/l	89
83) 1,3-Dichlorobenzene	13.619	146	317264	19.720	ug/l	90
84) 1,4-Dichlorobenzene	13.696	146	306508	19.761	ug/l	91
85) n-Butylbenzene	13.943	91	405571	18.908	ug/l	95
86) Hexachloroethane	14.211	117	91619	18.827	ug/l	71
87) 1,2-Dichlorobenzene	13.991	146	299332	19.573	ug/l	92
88) 1,2-Dibromo-3-Chloropr...	14.603	75	27714	19.019	ug/l #	28
89) 1,2,4-Trichlorobenzene	15.265	180	148301	18.053	ug/l	96
90) Hexachlorobutadiene	15.370	225	93772	19.424	ug/l	96
91) Naphthalene	15.507	128	331505	19.091	ug/l	99
92) 1,2,3-Trichlorobenzene	15.703	180	141109	18.060	ug/l	93

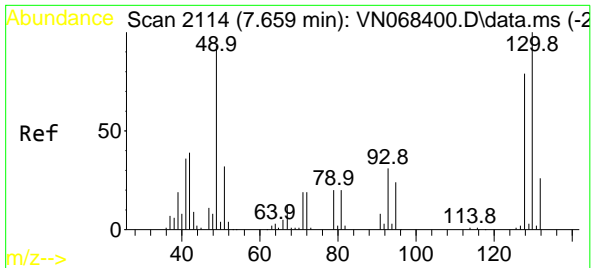
(#) = qualifier out of range (m) = manual integration (+) = signals summed

Data Path : Z:\voasrv\HPCHEM1\MSVOA\_N\Data\VN090321\  
 Data File : VN068405.D  
 Acq On : 3 Sep 2021 13:50  
 Operator : JC/MD  
 Sample : VSTDICV020  
 Misc : 5.00mL/MSVOA\_N/WATER  
 ALS Vial : 8 Sample Multiplier: 1

Instrument :  
 MSVOA\_N  
 Client Sampled :

Quant Time: Sep 04 03:10:06 2021  
 Quant Method : Z:\voasrv\HPCHEM1\MSVOA\_N\methods\624N090321W.M  
 Quant Title : METHOD 624 VOLATILE ORGANIC ANALYSIS  
 QLast Update : Fri Sep 03 13:24:01 2021  
 Response via : Initial Calibration



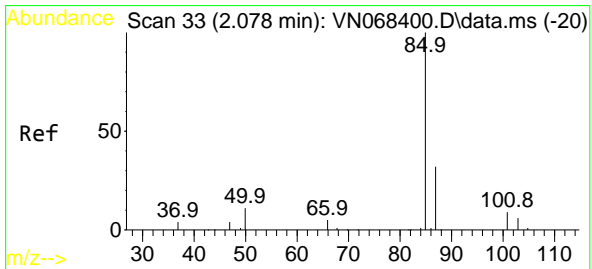
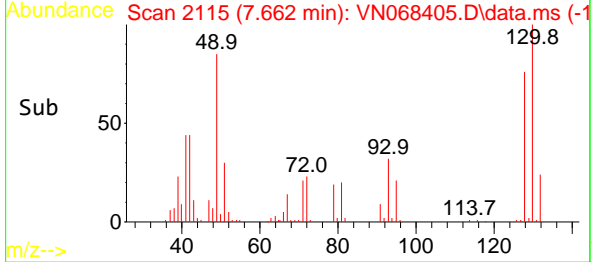
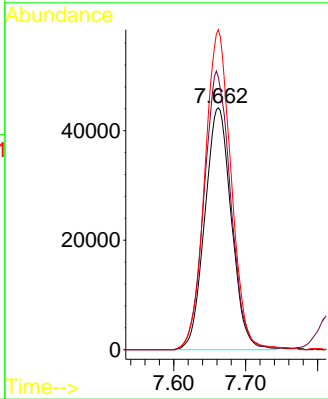
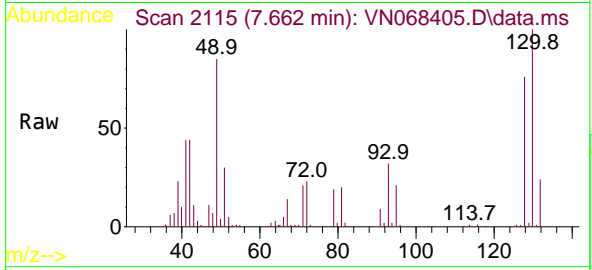


#1  
 Bromochloromethane  
 Concen: 30.000 ug/l  
 RT: 7.662 min Scan# 2115  
 Delta R.T. 0.003 min  
 Lab File: VN068405.D  
 Acq: 3 Sep 2021 13:50

Instrument :  
 MSVOA\_N  
 ClientSampled :

Tgt Ion:128 Resp: 113359

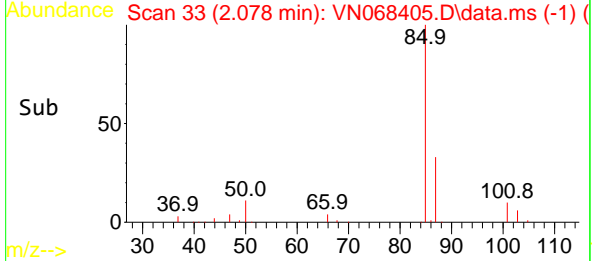
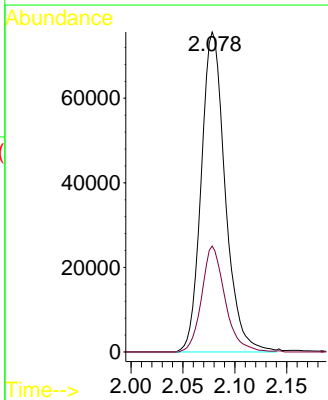
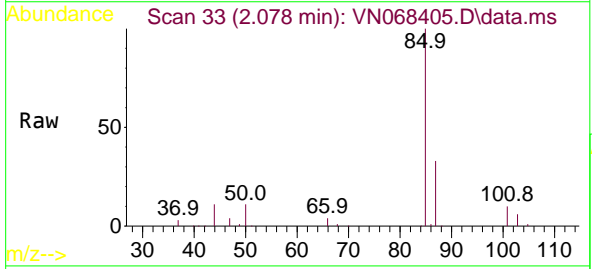
Ion	Ratio	Lower	Upper
128	100		
49	115.8	0.0	517.5
130	130.2	0.0	325.8

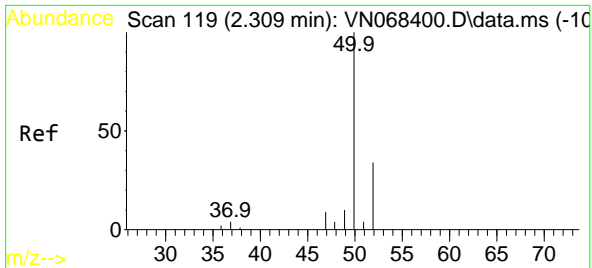


#2  
 Dichlorodifluoromethane  
 Concen: 21.179 ug/l  
 RT: 2.078 min Scan# 33  
 Delta R.T. 0.000 min  
 Lab File: VN068405.D  
 Acq: 3 Sep 2021 13:50

Tgt Ion: 85 Resp: 121563

Ion	Ratio	Lower	Upper
85	100		
87	33.1	15.7	47.0

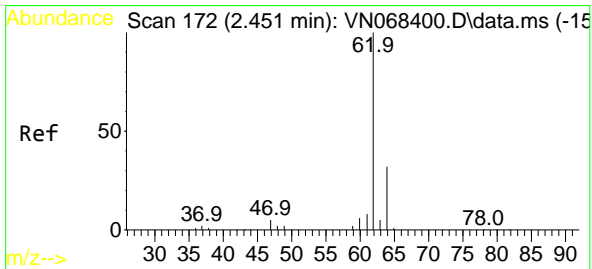
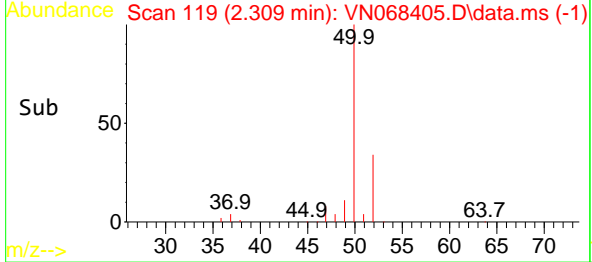
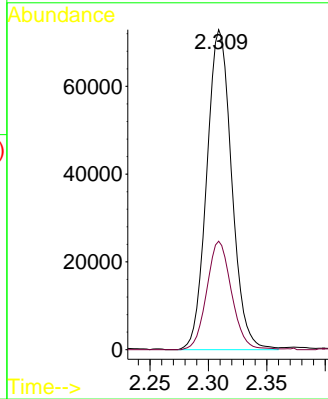
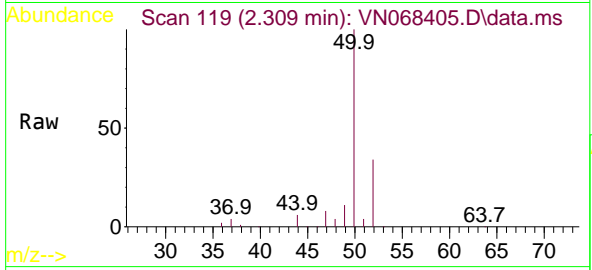




#3  
 Chloromethane  
 Concen: 20.874 ug/l  
 RT: 2.309 min Scan# 119  
 Delta R.T. 0.000 min  
 Lab File: VN068405.D  
 Acq: 3 Sep 2021 13:50

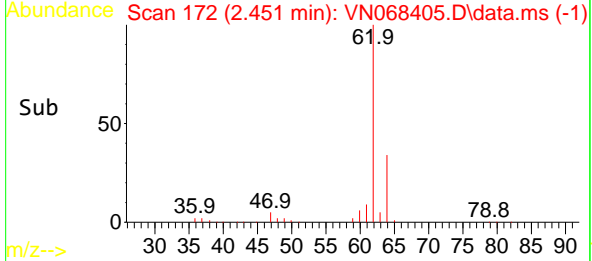
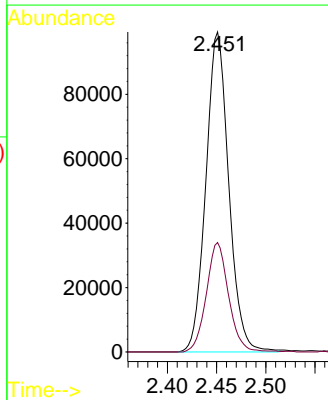
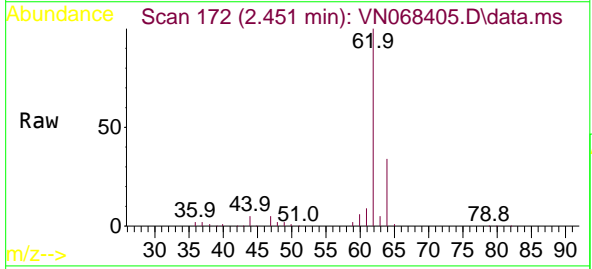
Instrument :  
 MSVOA\_N  
 ClientSampled :

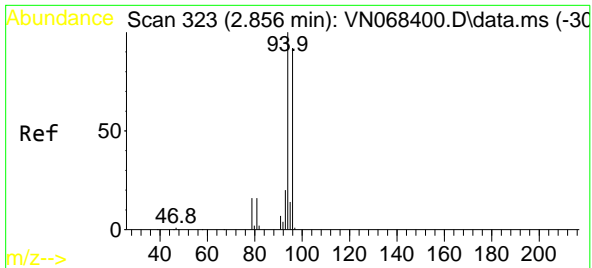
Tgt Ion: 50 Resp: 108404  
 Ion Ratio Lower Upper  
 50 100  
 52 33.9 26.0 39.0



#4  
 Vinyl Chloride  
 Concen: 20.789 ug/l  
 RT: 2.451 min Scan# 172  
 Delta R.T. 0.000 min  
 Lab File: VN068405.D  
 Acq: 3 Sep 2021 13:50

Tgt Ion: 62 Resp: 160875  
 Ion Ratio Lower Upper  
 62 100  
 64 34.2 23.7 35.5

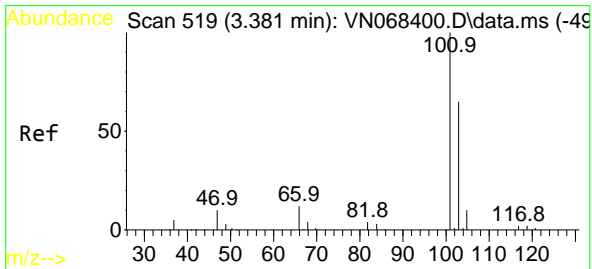
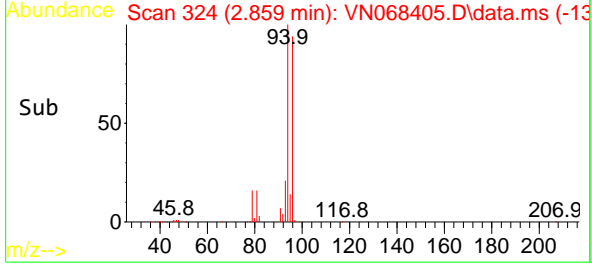
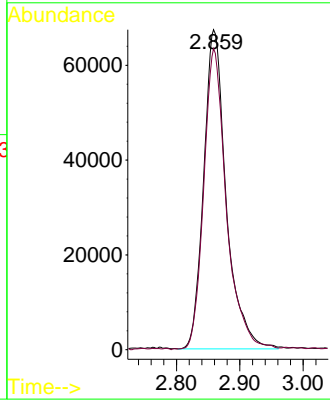
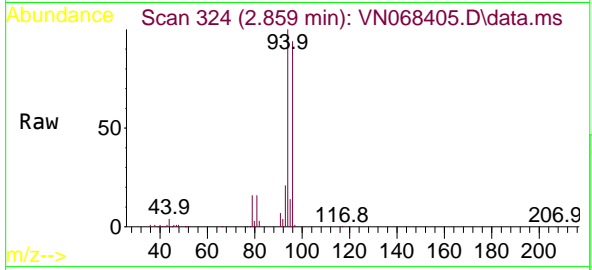




#5  
 Bromomethane  
 Concen: 23.457 ug/l  
 RT: 2.859 min Scan# 324  
 Delta R.T. 0.003 min  
 Lab File: VN068405.D  
 Acq: 3 Sep 2021 13:50

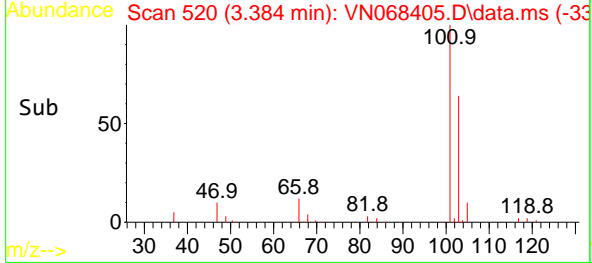
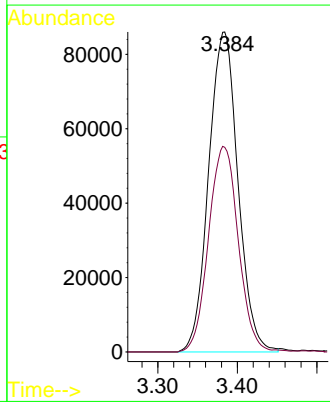
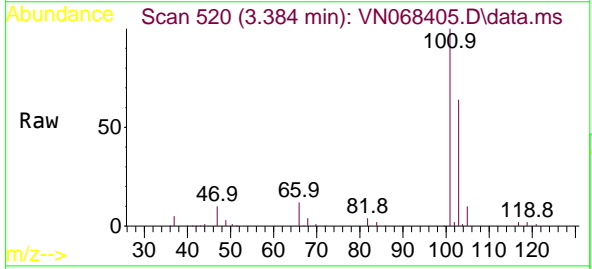
Instrument :  
 MSVOA\_N  
 ClientSampled :

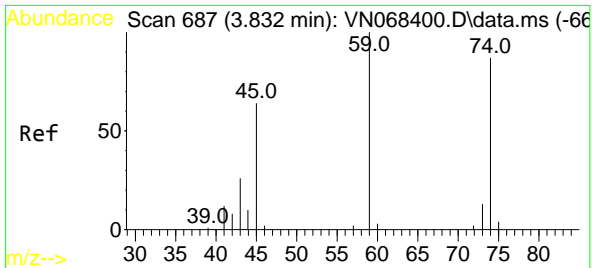
Tgt Ion: 94 Resp: 166441  
 Ion Ratio Lower Upper  
 94 100  
 96 94.1 69.4 104.2



#7  
 Trichlorofluoromethane  
 Concen: 20.839 ug/l  
 RT: 3.384 min Scan# 520  
 Delta R.T. 0.003 min  
 Lab File: VN068405.D  
 Acq: 3 Sep 2021 13:50

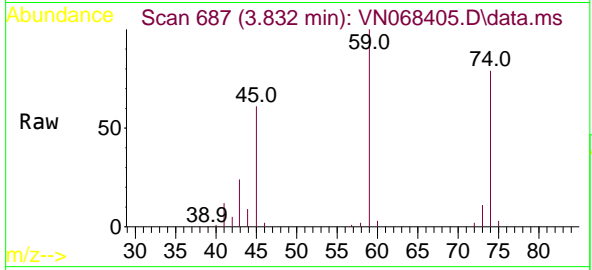
Tgt Ion:101 Resp: 220577  
 Ion Ratio Lower Upper  
 101 100  
 103 63.9 53.7 80.5



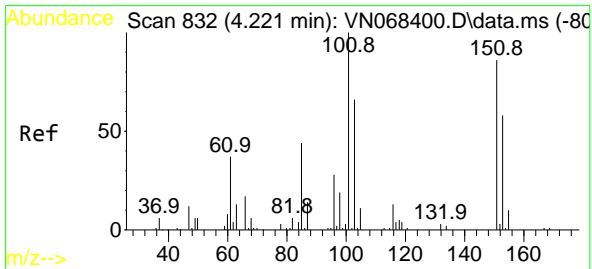
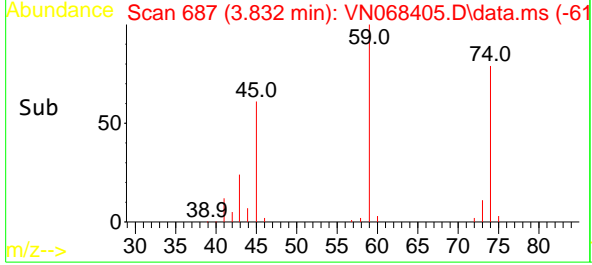
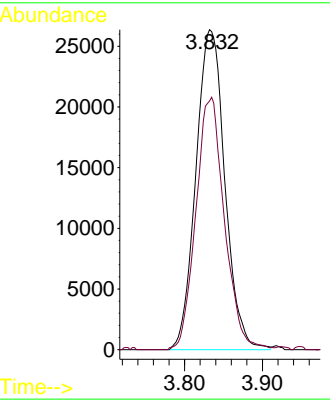


#8  
 Diethyl Ether  
 Concen: 20.288 ug/l  
 RT: 3.832 min Scan# 687  
 Delta R.T. 0.000 min  
 Lab File: VN068405.D  
 Acq: 3 Sep 2021 13:50

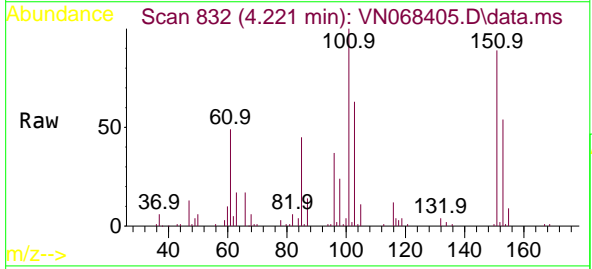
Instrument :  
 MSVOA\_N  
 ClientSampled :



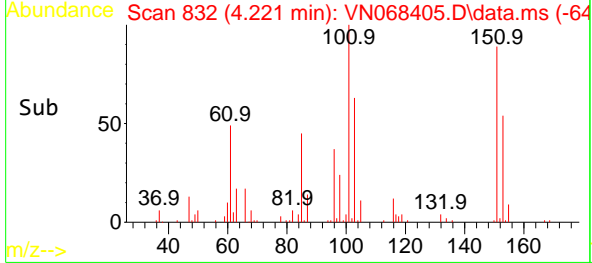
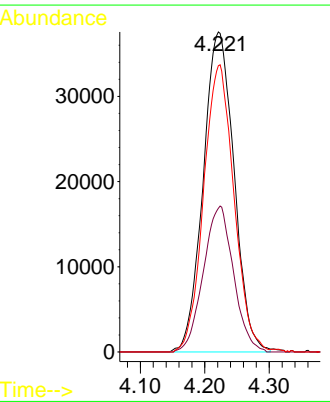
Tgt Ion: 74 Resp: 68212  
 Ion Ratio Lower Upper  
 74 100  
 45 77.8 20.3 182.5

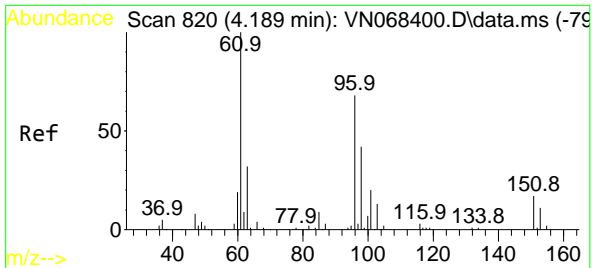


#9  
 1,1,2-Trichlorotrifluoroethane  
 Concen: 20.746 ug/l  
 RT: 4.221 min Scan# 832  
 Delta R.T. 0.000 min  
 Lab File: VN068405.D  
 Acq: 3 Sep 2021 13:50



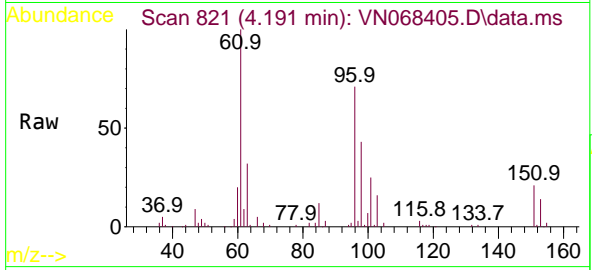
Tgt Ion: 101 Resp: 124847  
 Ion Ratio Lower Upper  
 101 100  
 85 44.5 0.0 97.8  
 151 88.1 0.0 135.0



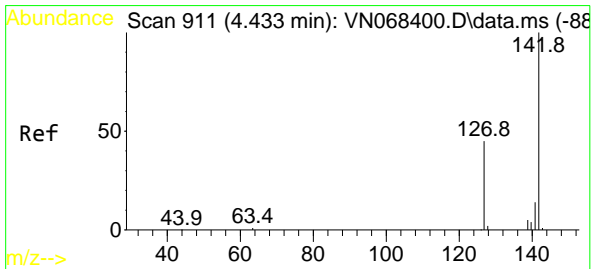
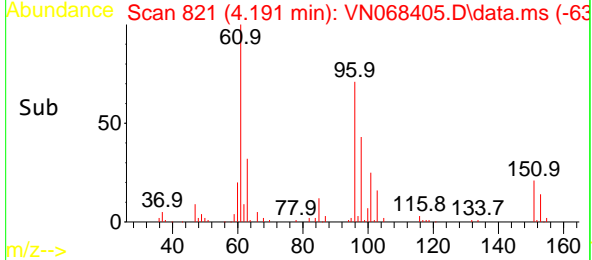
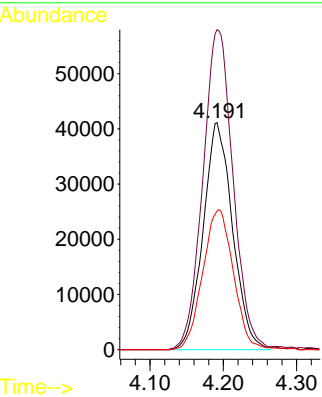


#10  
 1,1-Dichloroethene  
 Concen: 20.308 ug/l  
 RT: 4.191 min Scan# 821  
 Delta R.T. 0.003 min  
 Lab File: VN068405.D  
 Acq: 3 Sep 2021 13:50

Instrument :  
 MSVOA\_N  
 ClientSampled :

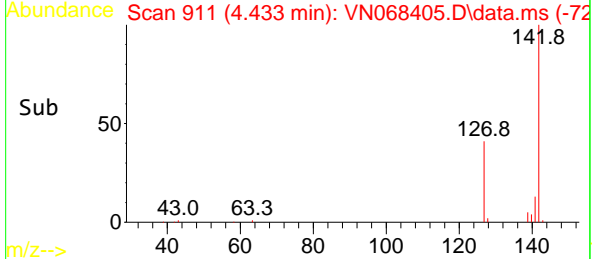
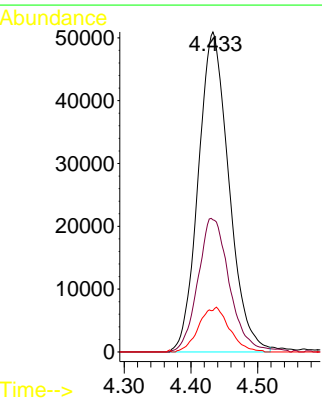
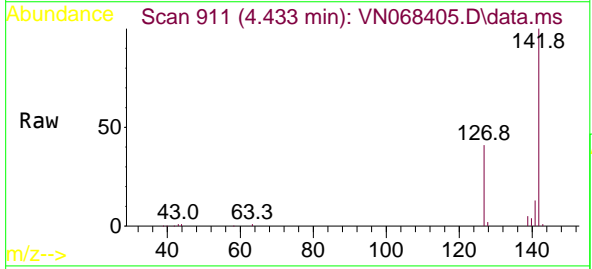


Tgt Ion: 96 Resp: 114831  
 Ion Ratio Lower Upper  
 96 100  
 61 140.5 148.3 222.5#  
 98 61.1 48.6 73.0

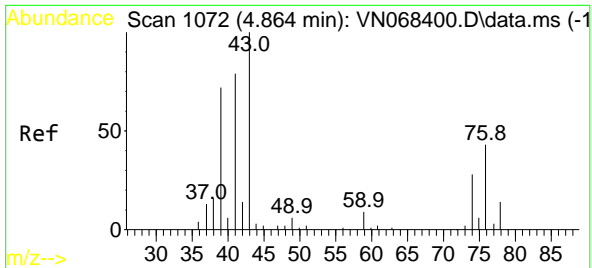


#11  
 Methyl Iodide  
 Concen: 17.838 ug/l  
 RT: 4.433 min Scan# 911  
 Delta R.T. 0.000 min  
 Lab File: VN068405.D  
 Acq: 3 Sep 2021 13:50

Tgt Ion:142 Resp: 162268  
 Ion Ratio Lower Upper  
 142 100  
 127 41.1 27.2 81.5  
 141 12.7 6.9 20.7

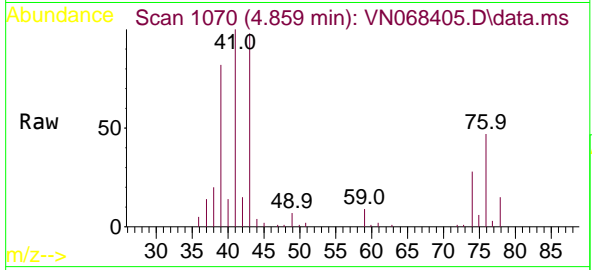




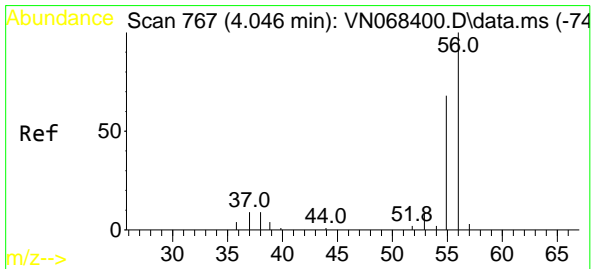
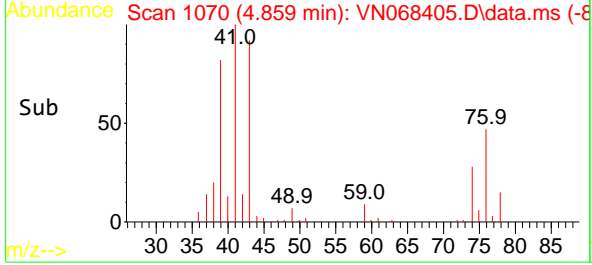
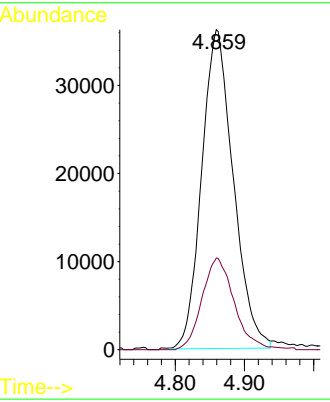


#12  
 Methyl Acetate  
 Concen: 20.146 ug/l  
 RT: 4.859 min Scan# 1070  
 Delta R.T. -0.005 min  
 Lab File: VN068405.D  
 Acq: 3 Sep 2021 13:50

Instrument :  
 MSVOA\_N  
 ClientSampled :

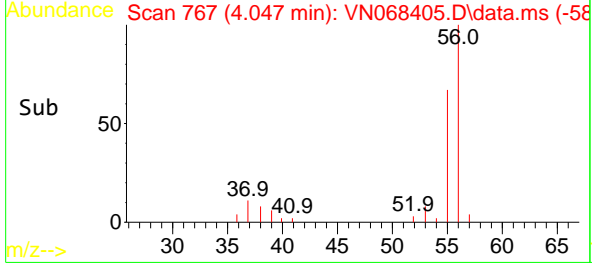
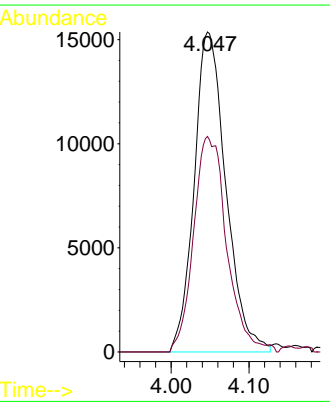
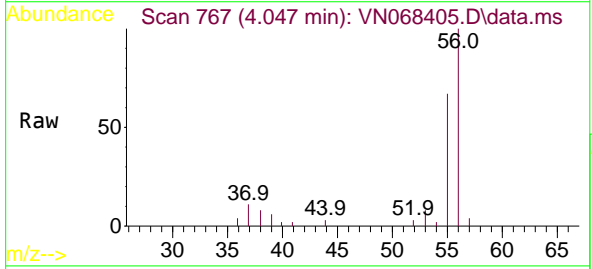


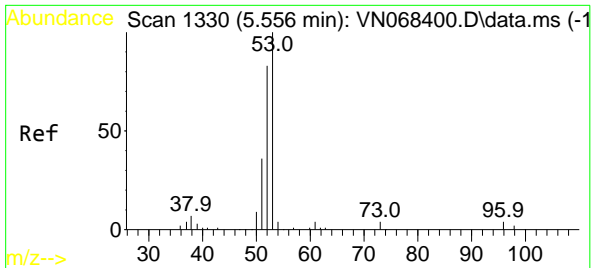
Tgt Ion: 43 Resp: 114652  
 Ion Ratio Lower Upper  
 43 100  
 74 28.7 16.6 25.0#



#13  
 Acrolein  
 Concen: 85.441 ug/l  
 RT: 4.047 min Scan# 767  
 Delta R.T. 0.000 min  
 Lab File: VN068405.D  
 Acq: 3 Sep 2021 13:50

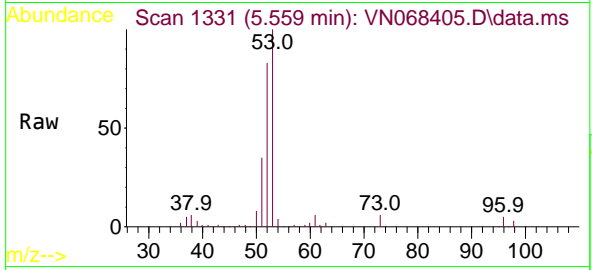
Tgt Ion: 56 Resp: 43583  
 Ion Ratio Lower Upper  
 56 100  
 55 38.6 57.5 86.3#





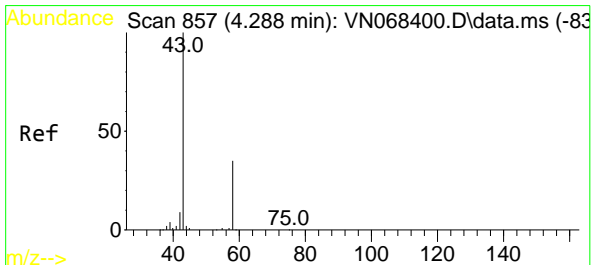
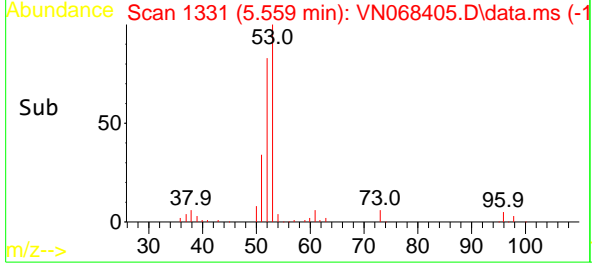
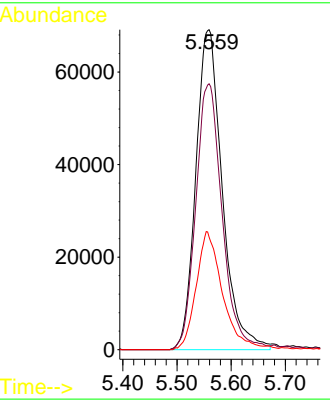
#14  
 Acrylonitrile  
 Concen: 101.619 ug/l  
 RT: 5.559 min Scan# 1331  
 Delta R.T. 0.003 min  
 Lab File: VN068405.D  
 Acq: 3 Sep 2021 13:50

Instrument :  
 MSVOA\_N  
 ClientSampled :

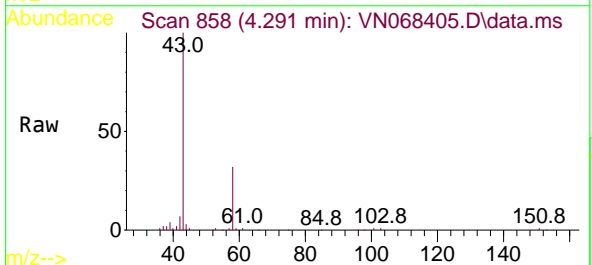


Tgt Ion: 53 Resp: 234514  

Ion	Ratio	Lower	Upper
53	100		
52	82.9	41.8	125.4
51	36.5	18.1	54.3

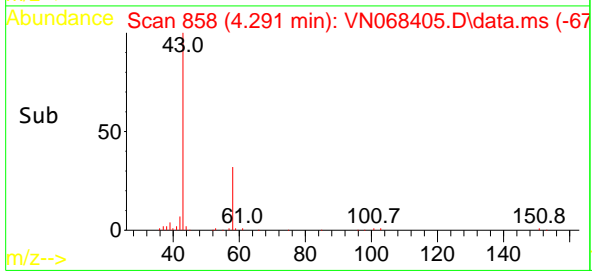
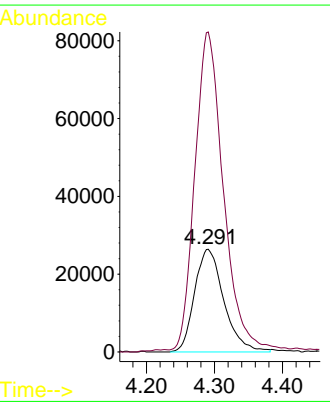


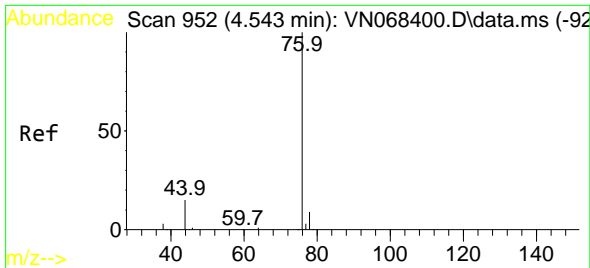
#15  
 Acetone  
 Concen: 116.875 ug/l  
 RT: 4.291 min Scan# 858  
 Delta R.T. 0.003 min  
 Lab File: VN068405.D  
 Acq: 3 Sep 2021 13:50



Tgt Ion: 58 Resp: 79276  

Ion	Ratio	Lower	Upper
58	100		
43	316.6	289.6	434.4

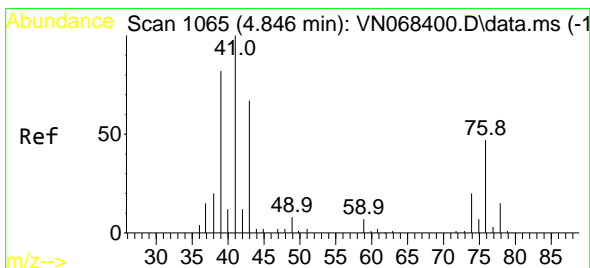
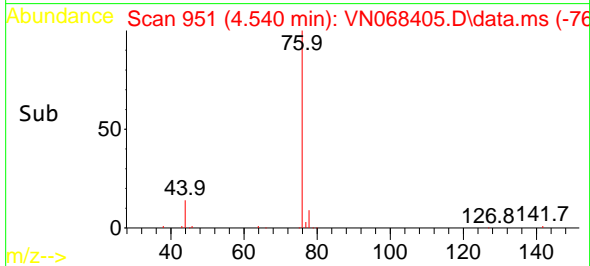
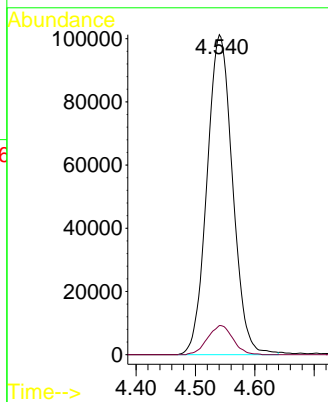
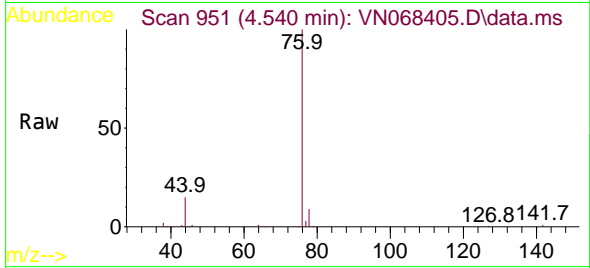




#16  
 Carbon Disulfide  
 Concen: 20.521 ug/l  
 RT: 4.540 min Scan# 951  
 Delta R.T. -0.002 min  
 Lab File: VN068405.D  
 Acq: 3 Sep 2021 13:50

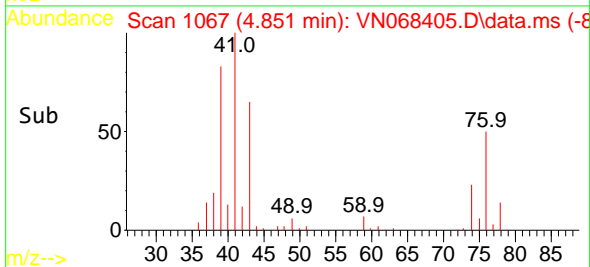
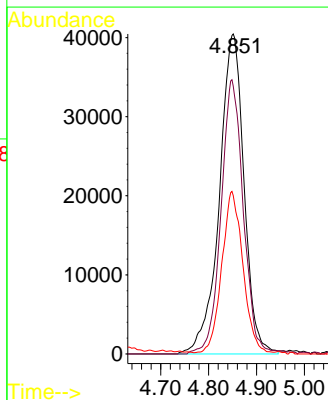
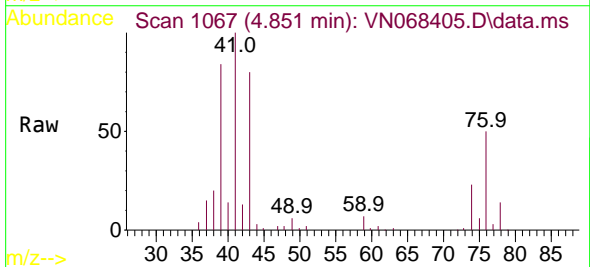
Instrument :  
 MSVOA\_N  
 ClientSampled :

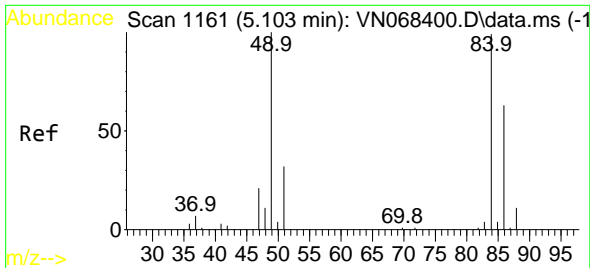
Tgt Ion: 76 Resp: 303221  
 Ion Ratio Lower Upper  
 76 100  
 78 9.1 7.0 10.4



#17  
 Allyl chloride  
 Concen: 20.892 ug/l  
 RT: 4.851 min Scan# 1067  
 Delta R.T. 0.006 min  
 Lab File: VN068405.D  
 Acq: 3 Sep 2021 13:50

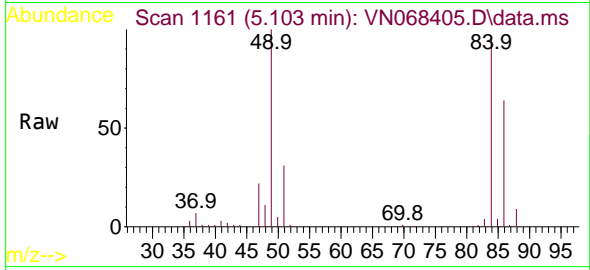
Tgt Ion: 41 Resp: 144701  
 Ion Ratio Lower Upper  
 41 100  
 39 83.7 39.8 119.4  
 76 48.8 16.8 50.4



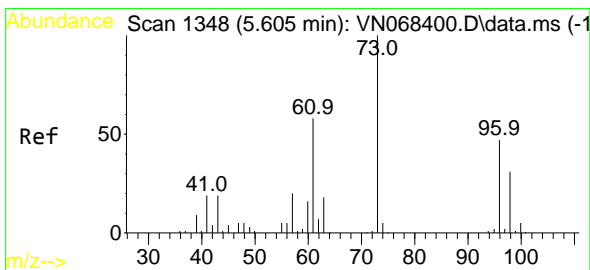
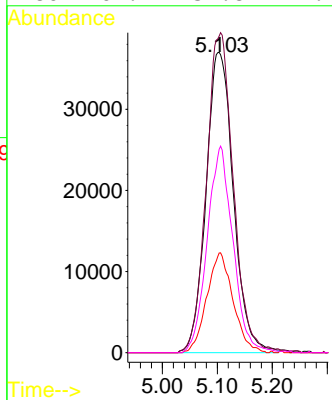
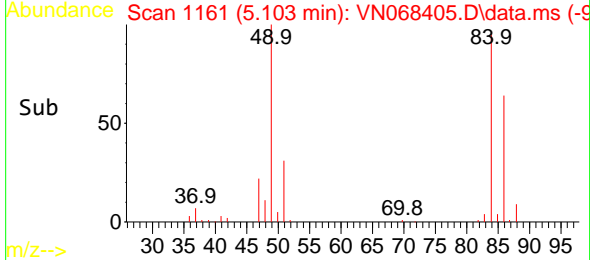


#18  
 Methylene Chloride  
 Concen: 20.691 ug/l  
 RT: 5.103 min Scan# 1161  
 Delta R.T. 0.000 min  
 Lab File: VN068405.D  
 Acq: 3 Sep 2021 13:50

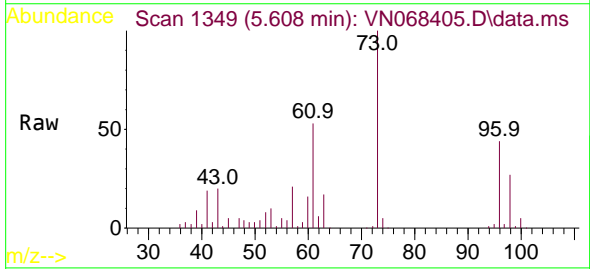
Instrument :  
 MSVOA\_N  
 ClientSampled :



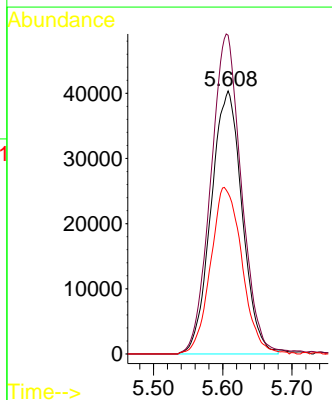
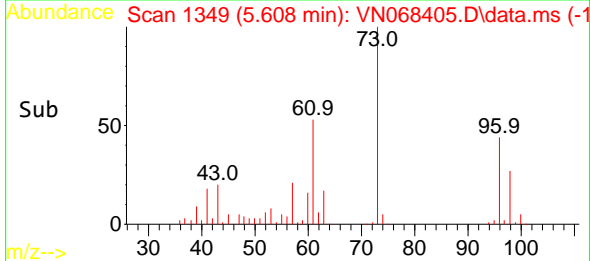
Tgt Ion: 84 Resp: 128042  
 Ion Ratio Lower Upper  
 84 100  
 49 105.4 110.9 166.3#  
 51 33.2 31.2 46.8  
 86 67.7 52.8 79.2

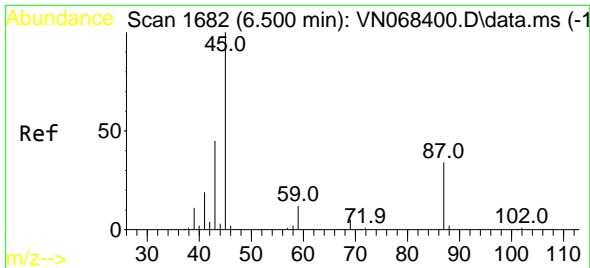


#19  
 trans-1,2-Dichloroethene  
 Concen: 20.003 ug/l  
 RT: 5.608 min Scan# 1349  
 Delta R.T. 0.003 min  
 Lab File: VN068405.D  
 Acq: 3 Sep 2021 13:50



Tgt Ion: 96 Resp: 126078  
 Ion Ratio Lower Upper  
 96 100  
 61 121.2 129.3 193.9#  
 98 61.1 48.0 72.0



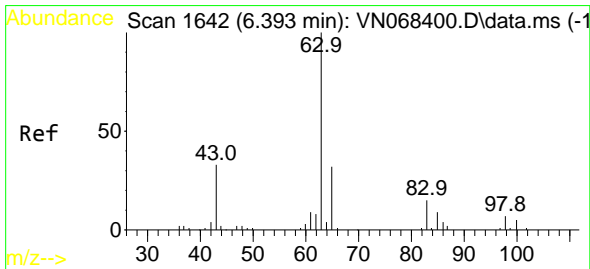
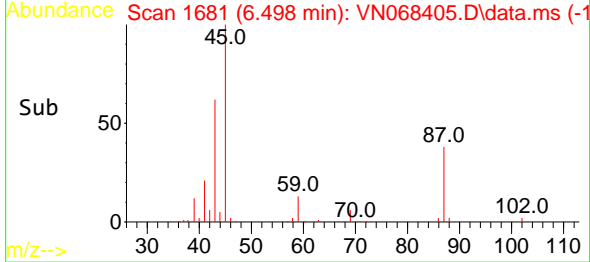
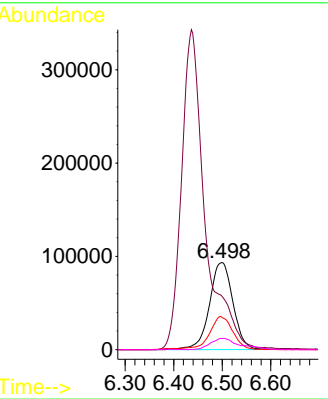
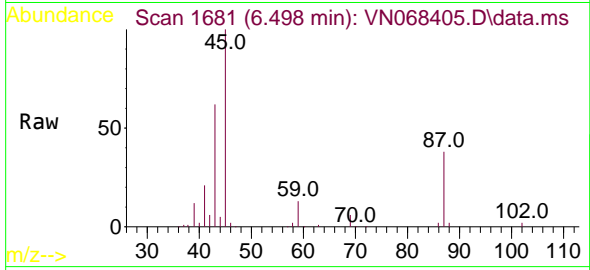


#20  
 Diisopropyl ether  
 Concen: 20.691 ug/l  
 RT: 6.498 min Scan# 1681  
 Delta R.T. -0.002 min  
 Lab File: VN068405.D  
 Acq: 3 Sep 2021 13:50

Instrument :  
 MSVOA\_N  
 ClientSampled :

Tgt Ion: 45 Resp: 313204

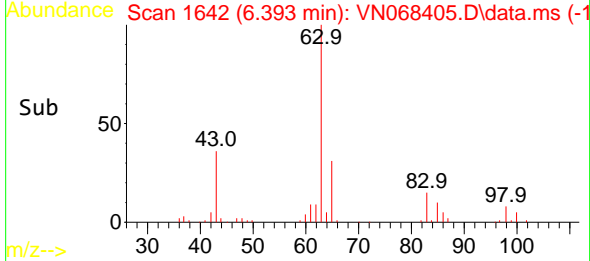
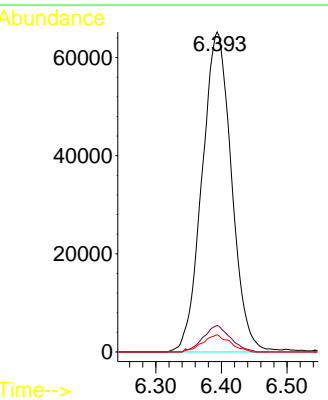
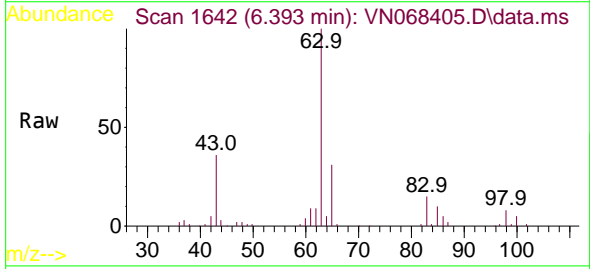
Ion	Ratio	Lower	Upper
45	100		
43	60.3	48.1	72.1
87	37.6	19.8	29.6#
59	12.6	8.6	13.0

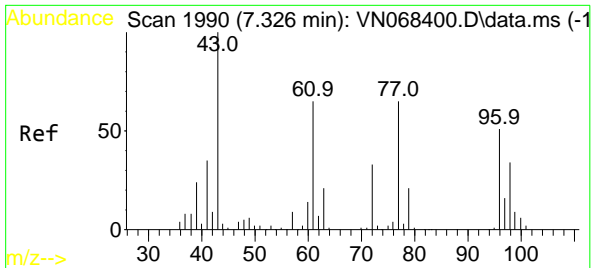


#21  
 1,1-Dichloroethane  
 Concen: 20.282 ug/l  
 RT: 6.393 min Scan# 1642  
 Delta R.T. 0.000 min  
 Lab File: VN068405.D  
 Acq: 3 Sep 2021 13:50

Tgt Ion: 63 Resp: 203037

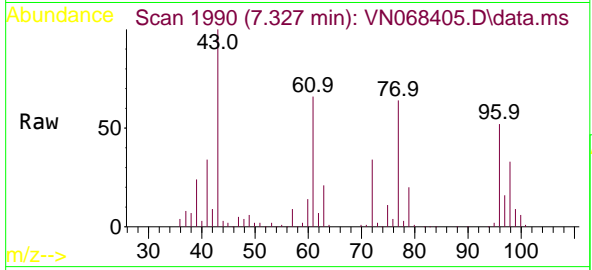
Ion	Ratio	Lower	Upper
63	100		
98	8.3	2.7	8.1#
100	5.4	1.8	5.3#



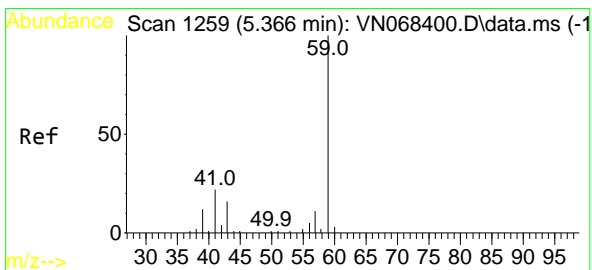
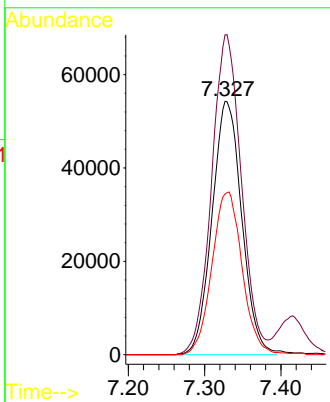
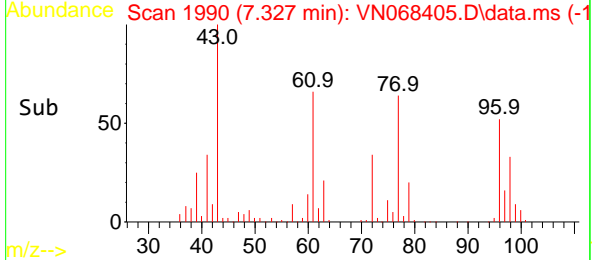


#22  
 cis-1,2-Dichloroethene  
 Concen: 20.047 ug/l  
 RT: 7.327 min Scan# 1990  
 Delta R.T. 0.000 min  
 Lab File: VN068405.D  
 Acq: 3 Sep 2021 13:50

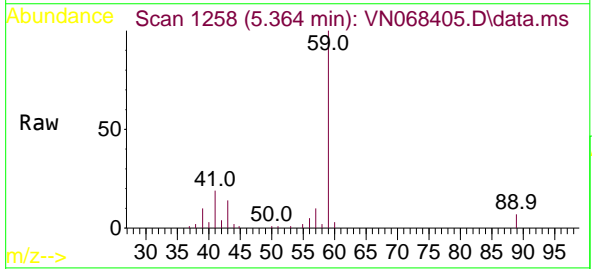
Instrument :  
 MSVOA\_N  
 ClientSampled :



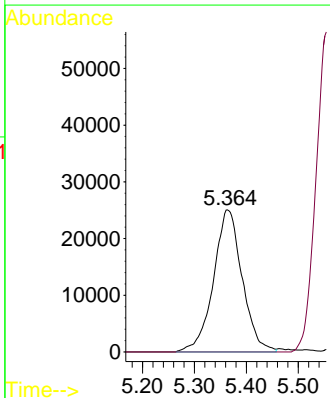
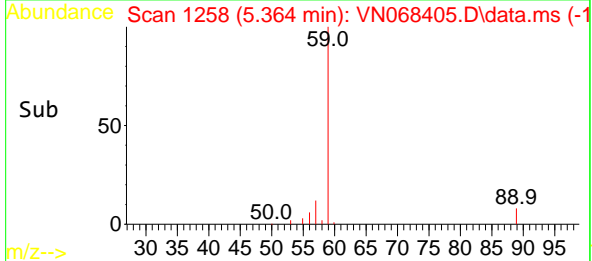
Tgt Ion: 96 Resp: 146817  
 Ion Ratio Lower Upper  
 96 100  
 61 126.6 131.2 196.8#  
 98 65.4 50.7 76.1

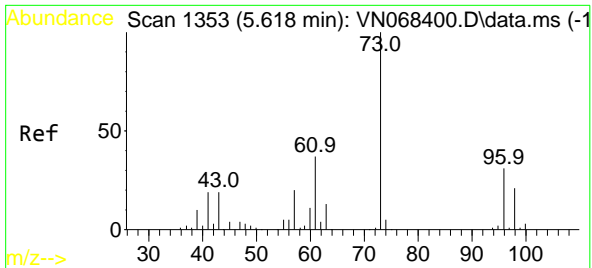


#23  
 tert-Butyl Alcohol  
 Concen: 113.787 ug/l  
 RT: 5.364 min Scan# 1258  
 Delta R.T. -0.002 min  
 Lab File: VN068405.D  
 Acq: 3 Sep 2021 13:50



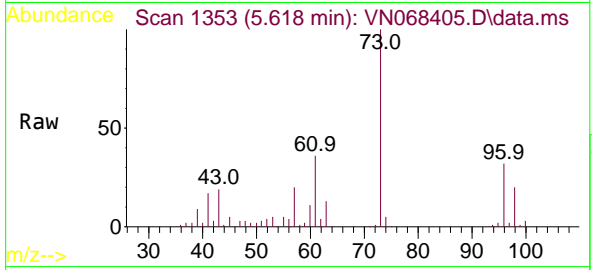
Tgt Ion: 59 Resp: 96383  
 Ion Ratio Lower Upper  
 59 100  
 52 0.0 0.1 0.1#



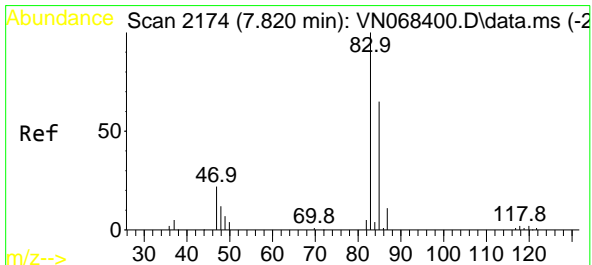
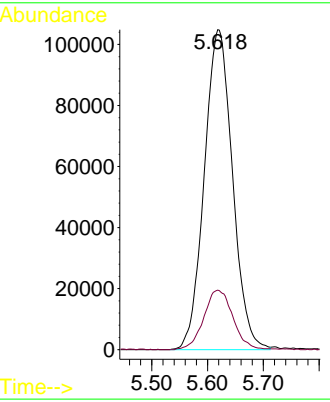
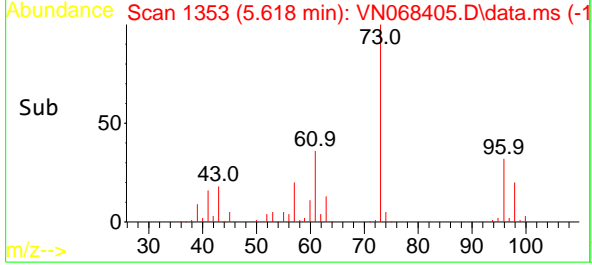


#24  
 Methyl tert-Butyl Ether  
 Concen: 20.071 ug/l  
 RT: 5.618 min Scan# 1353  
 Delta R.T. 0.000 min  
 Lab File: VN068405.D  
 Acq: 3 Sep 2021 13:50

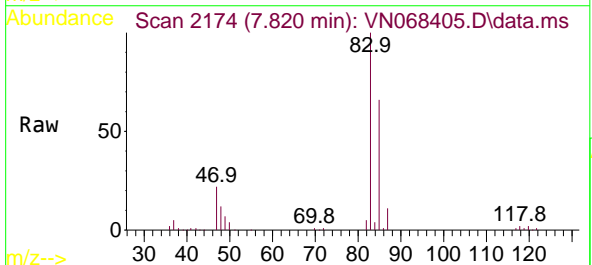
Instrument :  
 MSVOA\_N  
 ClientSampled :



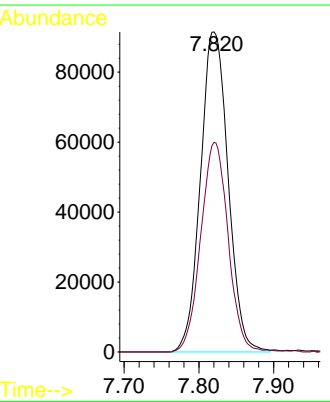
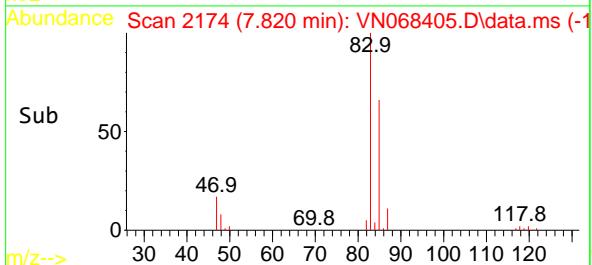
Tgt Ion: 73 Resp: 368728  
 Ion Ratio Lower Upper  
 73 100  
 43 19.2 20.0 30.0#

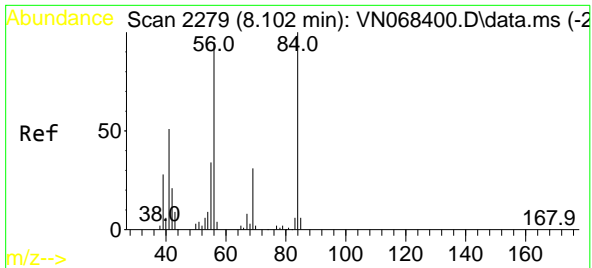


#25  
 Chloroform  
 Concen: 20.014 ug/l  
 RT: 7.820 min Scan# 2174  
 Delta R.T. 0.000 min  
 Lab File: VN068405.D  
 Acq: 3 Sep 2021 13:50



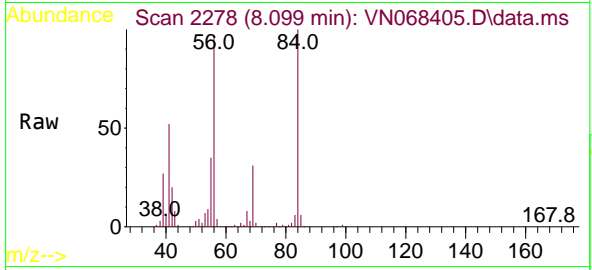
Tgt Ion: 83 Resp: 235323  
 Ion Ratio Lower Upper  
 83 100  
 85 65.5 51.5 77.3



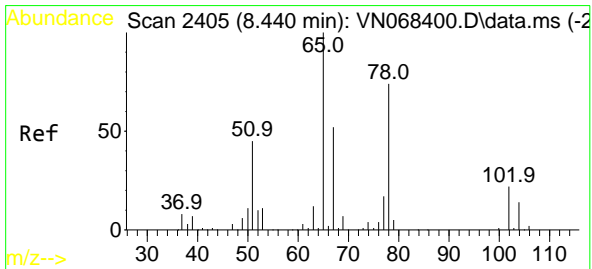
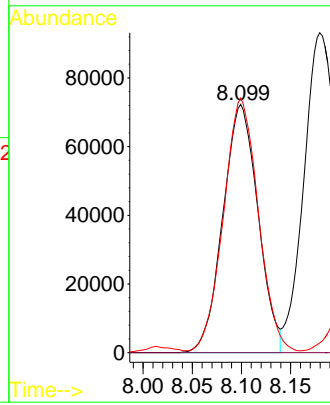
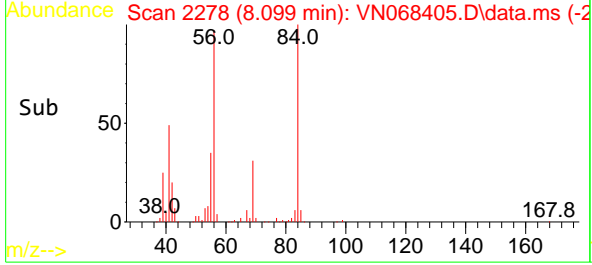


#26  
 Cyclohexane  
 Concen: 20.509 ug/l  
 RT: 8.099 min Scan# 2278  
 Delta R.T. -0.002 min  
 Lab File: VN068405.D  
 Acq: 3 Sep 2021 13:50

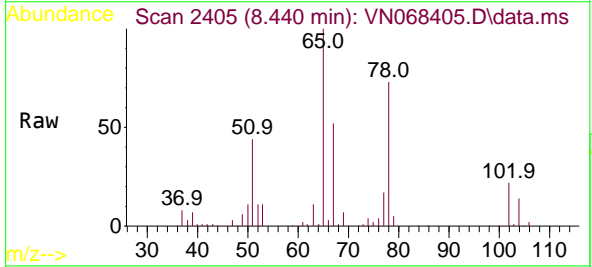
Instrument :  
 MSVOA\_N  
 ClientSampled :



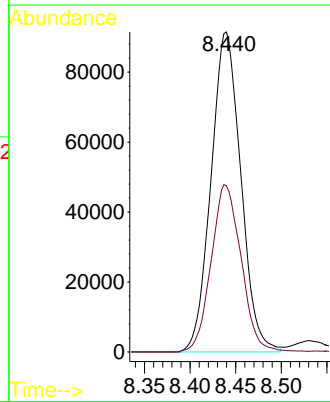
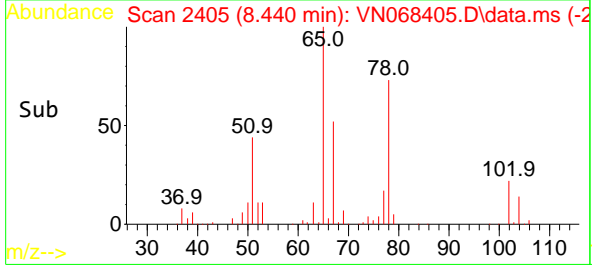
Tgt Ion: 56 Resp: 179841  
 Ion Ratio Lower Upper  
 56 100  
 89 0.0 0.0 0.0  
 84 100.5 66.2 99.2#



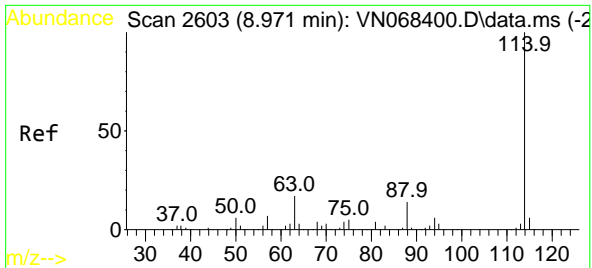
#27  
 1,2-Dichloroethane-d4  
 Concen: 30.971 ug/l  
 RT: 8.440 min Scan# 2405  
 Delta R.T. 0.000 min  
 Lab File: VN068405.D  
 Acq: 3 Sep 2021 13:50



Tgt Ion: 65 Resp: 208146  
 Ion Ratio Lower Upper  
 65 100  
 67 52.6 39.8 59.8

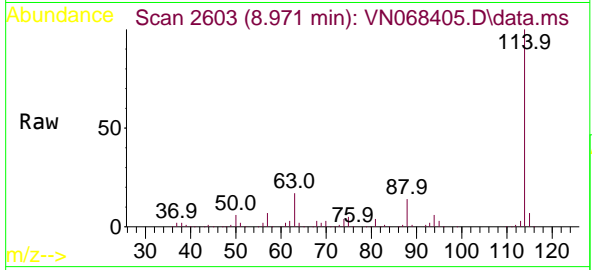




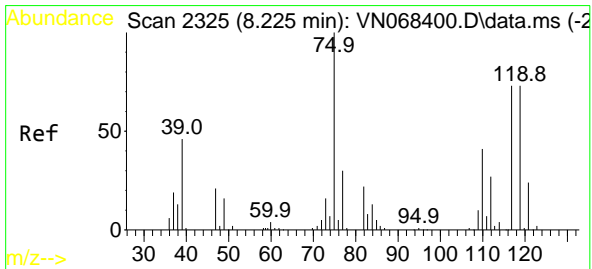
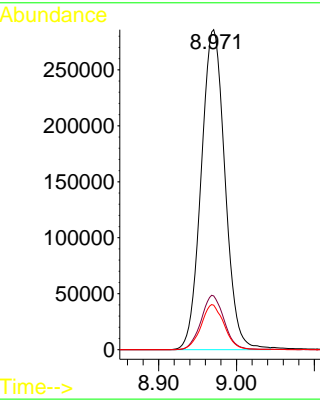
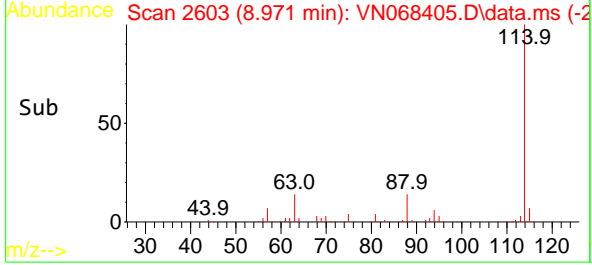


#28  
 1,4-Difluorobenzene  
 Concen: 30.000 ug/l  
 RT: 8.971 min Scan# 2603  
 Delta R.T. 0.000 min  
 Lab File: VN068405.D  
 Acq: 3 Sep 2021 13:50

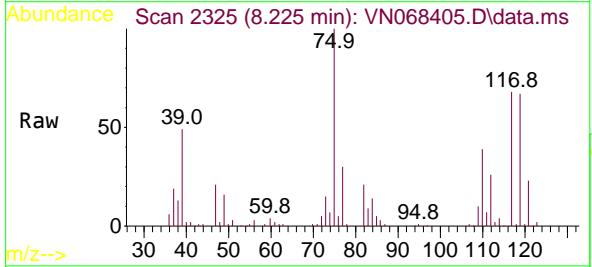
Instrument :  
 MSVOA\_N  
 ClientSampled :



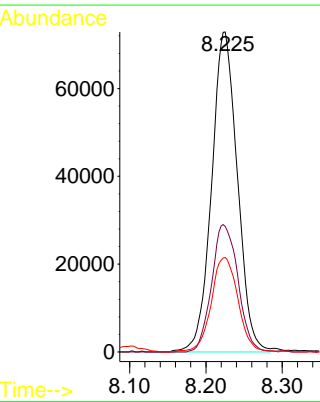
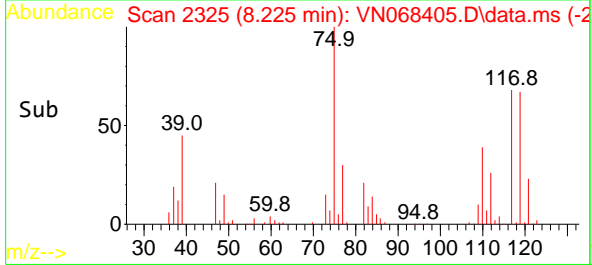
Tgt Ion:114 Resp: 606253  
 Ion Ratio Lower Upper  
 114 100  
 63 16.4 20.3 30.5#  
 88 13.7 14.6 22.0#

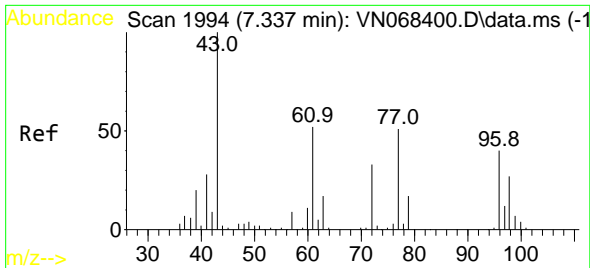


#29  
 1,1-Dichloropropene  
 Concen: 19.644 ug/l  
 RT: 8.225 min Scan# 2325  
 Delta R.T. 0.000 min  
 Lab File: VN068405.D  
 Acq: 3 Sep 2021 13:50



Tgt Ion: 75 Resp: 170845  
 Ion Ratio Lower Upper  
 75 100  
 110 40.7 0.0 63.4  
 77 30.0 0.0 63.0

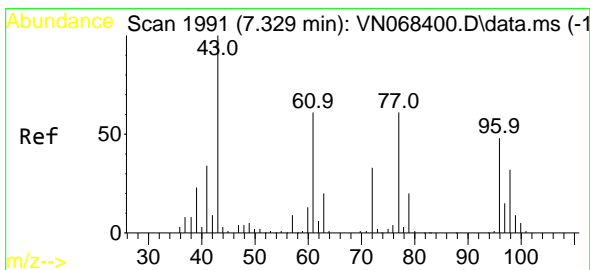
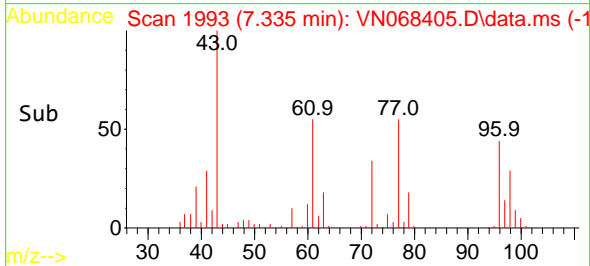
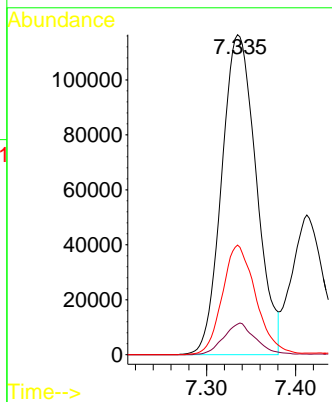
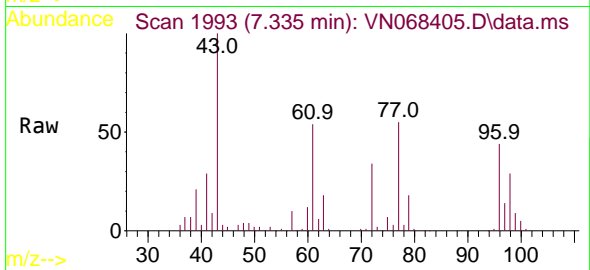




#30  
 2-Butanone  
 Concen: 100.881 ug/l  
 RT: 7.335 min Scan# 1993  
 Delta R.T. -0.002 min  
 Lab File: VN068405.D  
 Acq: 3 Sep 2021 13:50

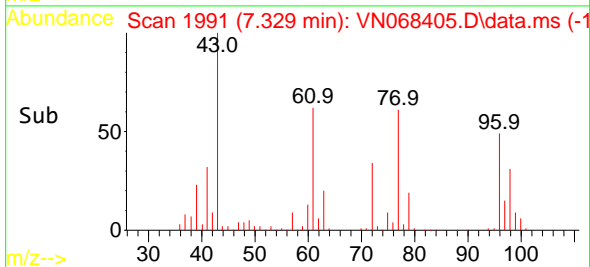
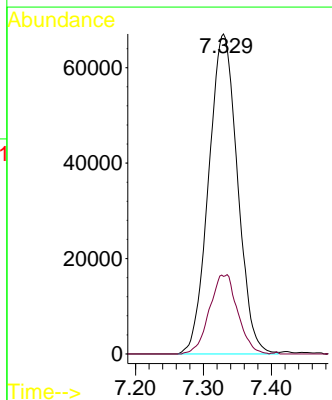
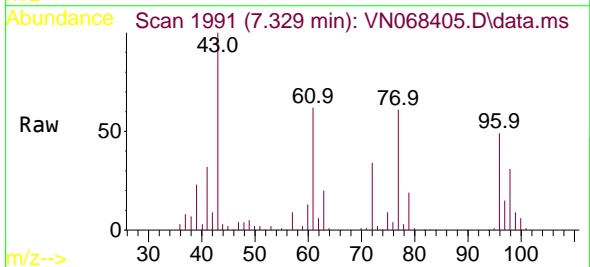
Instrument :  
 MSVOA\_N  
 ClientSampled :

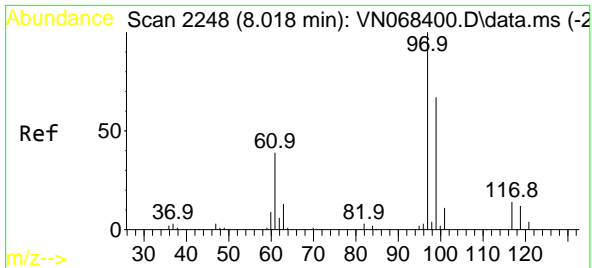
Tgt Ion: 43 Resp: 313914  
 Ion Ratio Lower Upper  
 43 100  
 57 9.1 6.9 10.3  
 72 33.3 20.0 30.0#



#31  
 2,2-Dichloropropane  
 Concen: 19.938 ug/l  
 RT: 7.329 min Scan# 1991  
 Delta R.T. 0.000 min  
 Lab File: VN068405.D  
 Acq: 3 Sep 2021 13:50

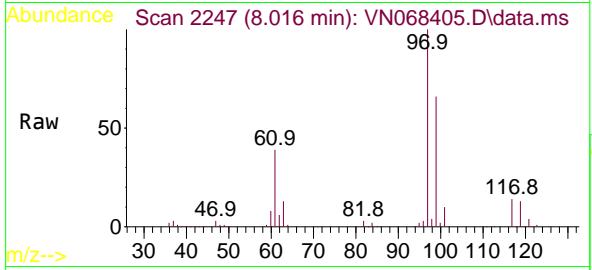
Tgt Ion: 77 Resp: 197477  
 Ion Ratio Lower Upper  
 77 100  
 97 12.6 16.3 24.5#





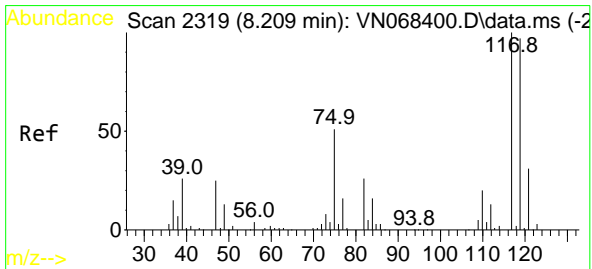
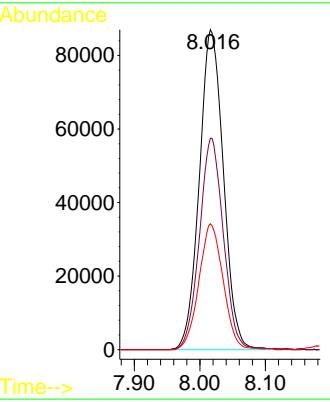
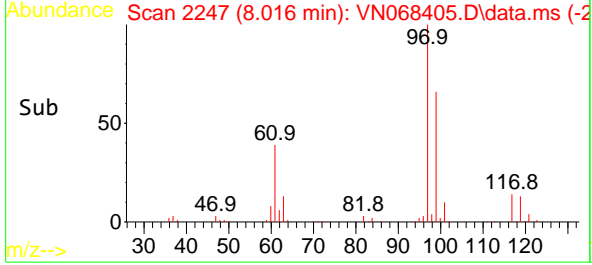
#32  
 1,1,1-Trichloroethane  
 Concen: 19.412 ug/l  
 RT: 8.016 min Scan# 2247  
 Delta R.T. -0.002 min  
 Lab File: VN068405.D  
 Acq: 3 Sep 2021 13:50

Instrument :  
 MSVOA\_N  
 ClientSampled :

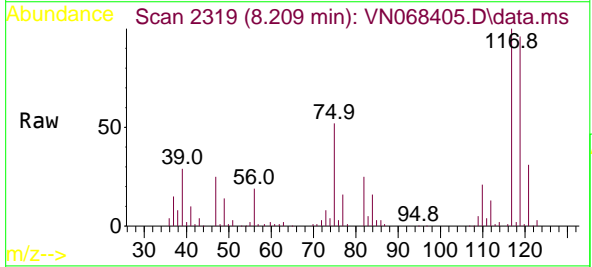


Tgt Ion: 97 Resp: 221750

Ion	Ratio	Lower	Upper
97	100		
99	65.7	49.7	74.5
61	39.4	38.0	57.0

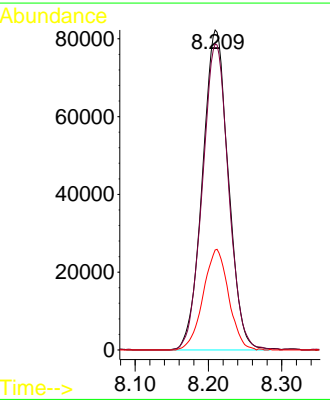
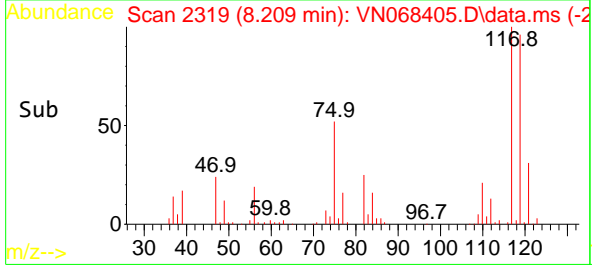


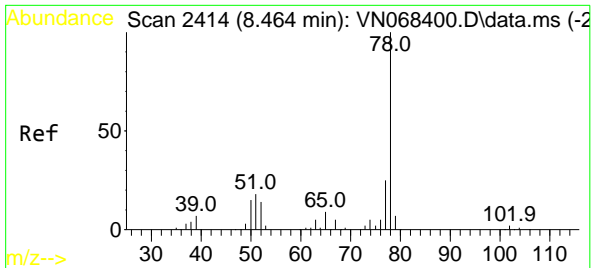
#33  
 Carbon Tetrachloride  
 Concen: 19.131 ug/l  
 RT: 8.209 min Scan# 2319  
 Delta R.T. 0.000 min  
 Lab File: VN068405.D  
 Acq: 3 Sep 2021 13:50



Tgt Ion: 117 Resp: 201910

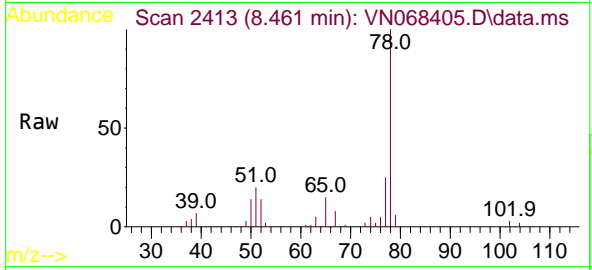
Ion	Ratio	Lower	Upper
117	100		
119	95.6	73.3	109.9
121	31.2	24.2	36.4



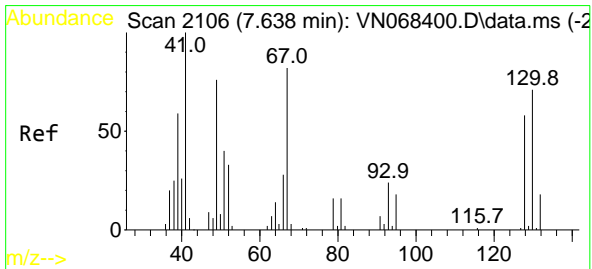
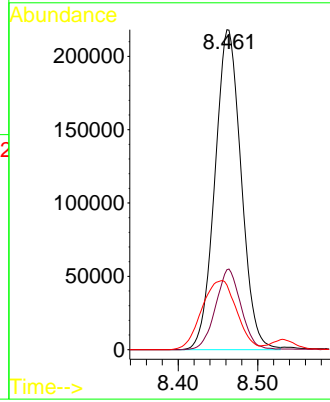
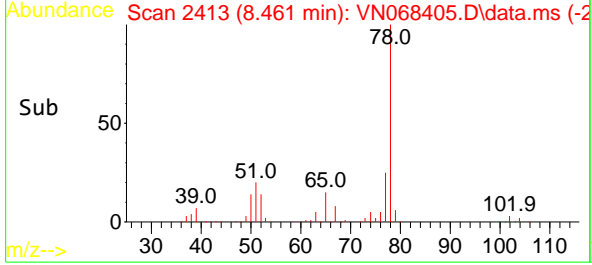


#34  
Benzene  
Concen: 19.440 ug/l  
RT: 8.461 min Scan# 2413  
Delta R.T. -0.002 min  
Lab File: VN068405.D  
Acq: 3 Sep 2021 13:50

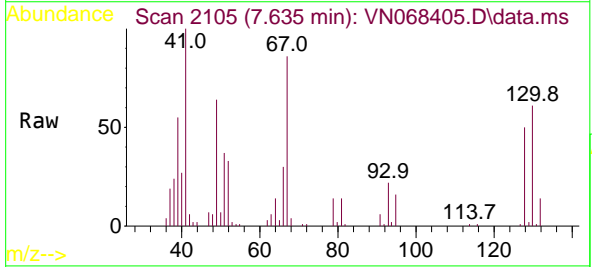
Instrument :  
MSVOA\_N  
ClientSampled :



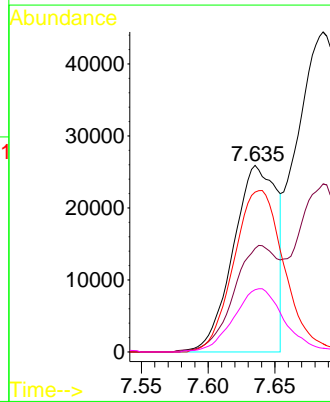
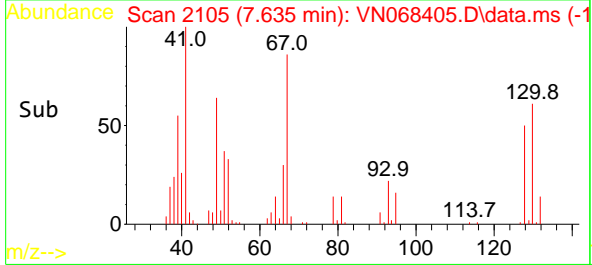
Tgt Ion: 78 Resp: 499755  
Ion Ratio Lower Upper  
78 100  
77 25.0 18.6 28.0  
51 19.5 20.0 30.0#

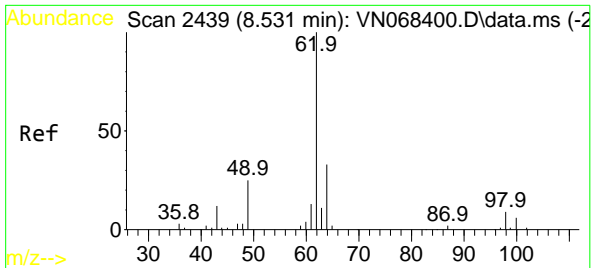


#35  
Methacrylonitrile  
Concen: 19.306 ug/l  
RT: 7.635 min Scan# 2105  
Delta R.T. -0.002 min  
Lab File: VN068405.D  
Acq: 3 Sep 2021 13:50



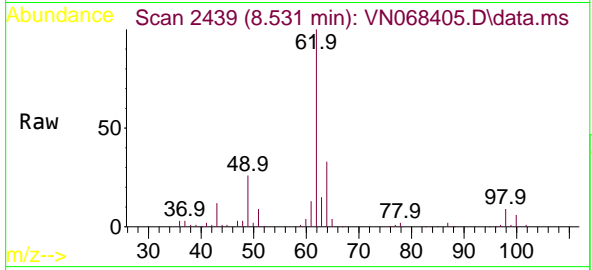
Tgt Ion: 41 Resp: 58691  
Ion Ratio Lower Upper  
41 100  
39 54.6 30.3 90.9  
67 85.7 32.1 96.3  
52 33.4 14.3 42.9



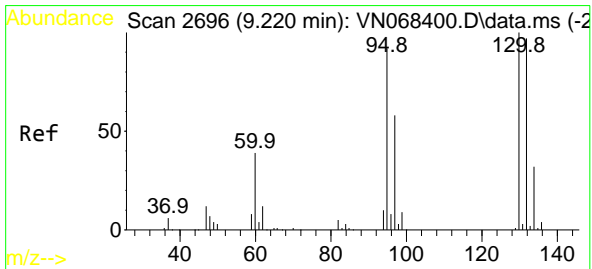
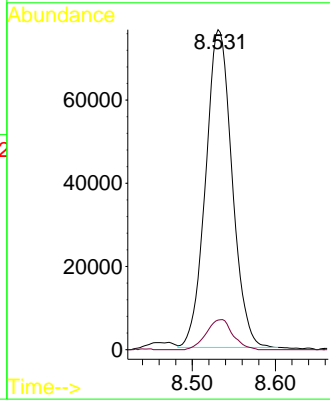
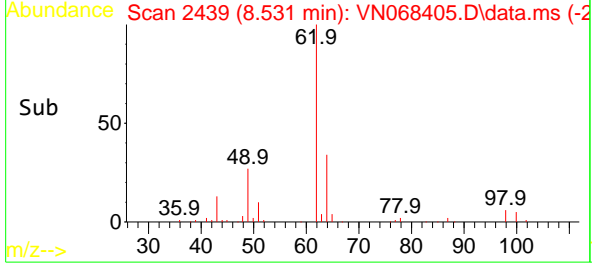


#36  
 1,2-Dichloroethane  
 Concen: 19.636 ug/l  
 RT: 8.531 min Scan# 2439  
 Delta R.T. 0.000 min  
 Lab File: VN068405.D  
 Acq: 3 Sep 2021 13:50

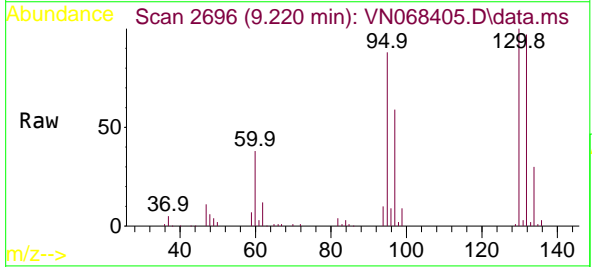
Instrument :  
 MSVOA\_N  
 ClientSampled :



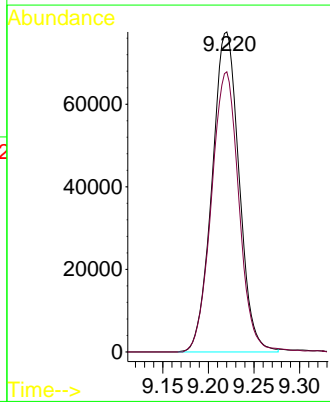
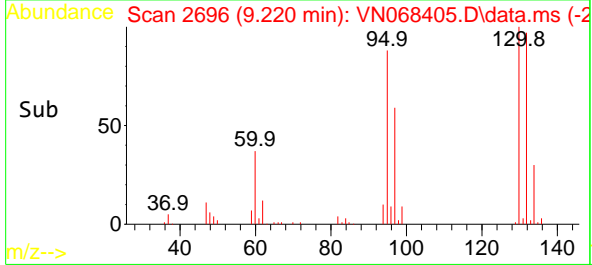
Tgt Ion: 62 Resp: 169020  
 Ion Ratio Lower Upper  
 62 100  
 98 9.5 6.0 9.0#

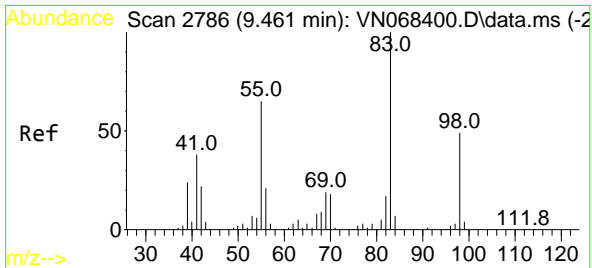


#37  
 Trichloroethene  
 Concen: 19.451 ug/l  
 RT: 9.220 min Scan# 2696  
 Delta R.T. 0.000 min  
 Lab File: VN068405.D  
 Acq: 3 Sep 2021 13:50



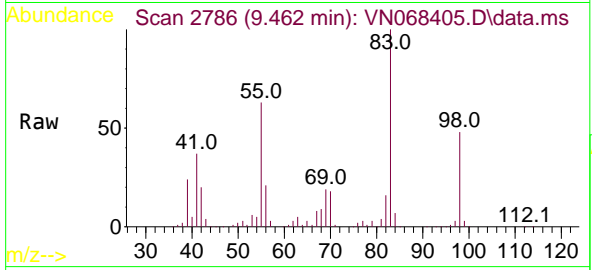
Tgt Ion:130 Resp: 159836  
 Ion Ratio Lower Upper  
 130 100  
 95 87.5 92.2 138.2#



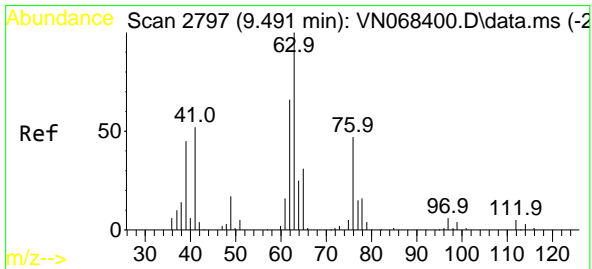
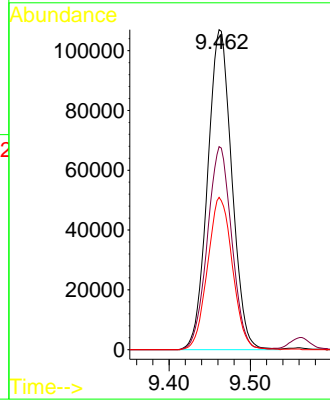
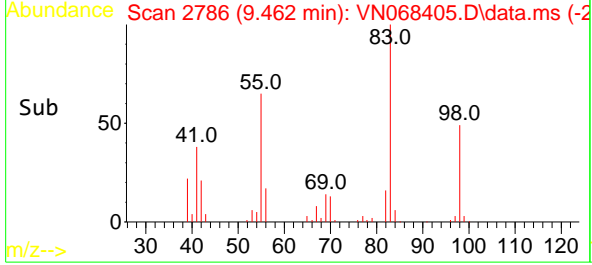


#38  
 Methylcyclohexane  
 Concen: 19.641 ug/l  
 RT: 9.462 min Scan# 2786  
 Delta R.T. 0.000 min  
 Lab File: VN068405.D  
 Acq: 3 Sep 2021 13:50

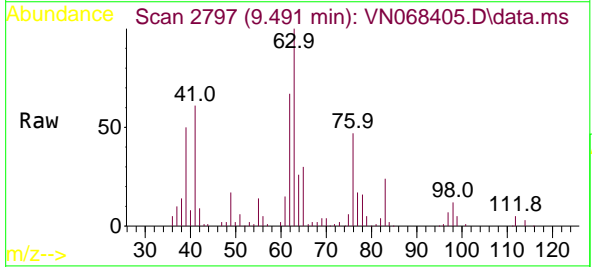
Instrument :  
 MSVOA\_N  
 ClientSampled :



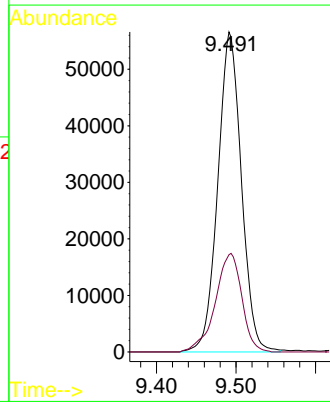
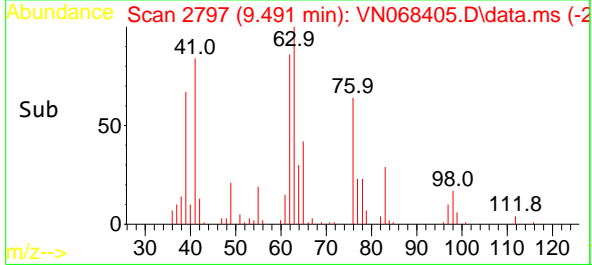
Tgt Ion: 83 Resp: 221750  
 Ion Ratio Lower Upper  
 83 100  
 55 63.9 41.5 124.6  
 98 48.9 22.4 67.0

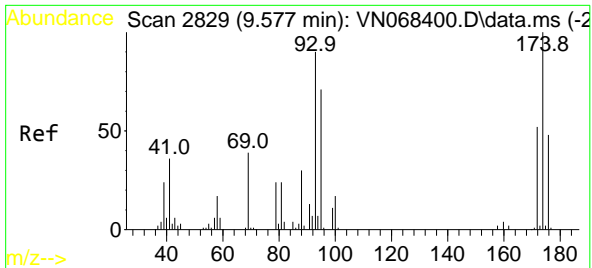


#39  
 1,2-Dichloropropane  
 Concen: 19.130 ug/l  
 RT: 9.491 min Scan# 2797  
 Delta R.T. 0.000 min  
 Lab File: VN068405.D  
 Acq: 3 Sep 2021 13:50



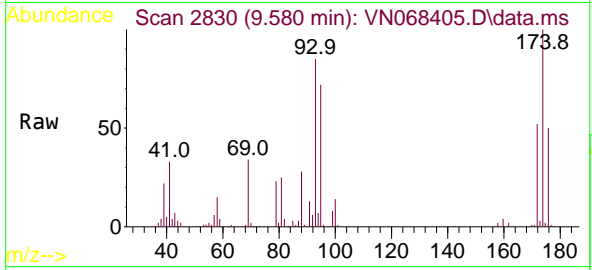
Tgt Ion: 63 Resp: 116587  
 Ion Ratio Lower Upper  
 63 100  
 65 30.4 24.5 36.7



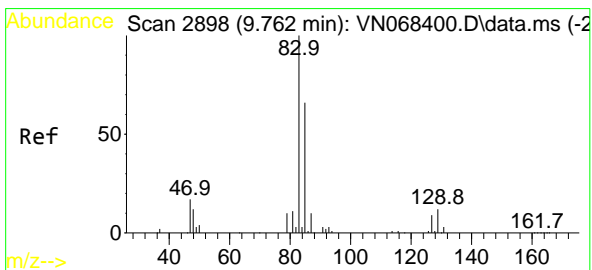
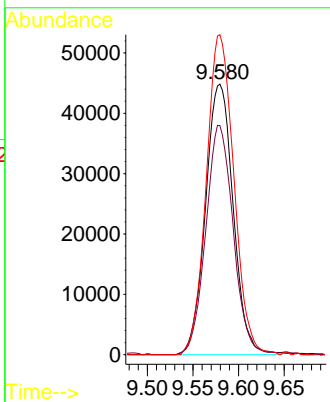
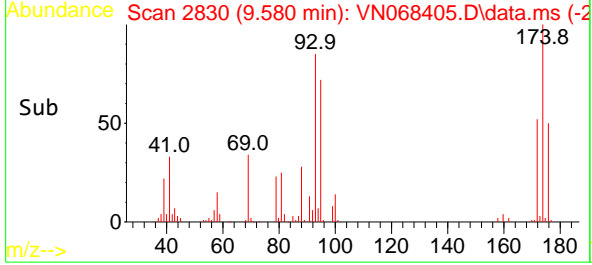


#40  
 Dibromomethane  
 Concen: 19.630 ug/l  
 RT: 9.580 min Scan# 2830  
 Delta R.T. 0.003 min  
 Lab File: VN068405.D  
 Acq: 3 Sep 2021 13:50

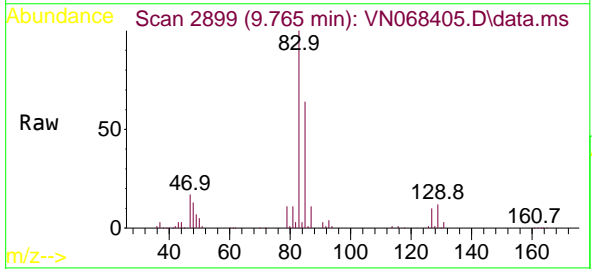
Instrument :  
 MSVOA\_N  
 ClientSampled :



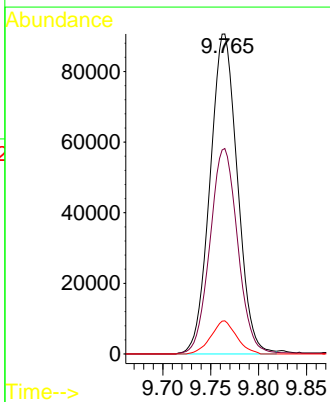
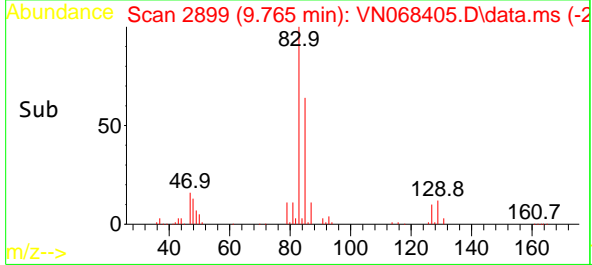
Tgt Ion: 93 Resp: 94674  
 Ion Ratio Lower Upper  
 93 100  
 95 83.8 0.0 167.6  
 174 117.7 0.0 148.4

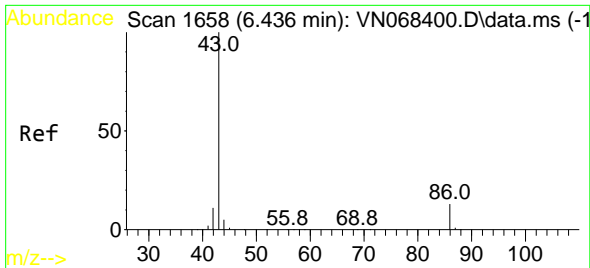


#41  
 Bromodichloromethane  
 Concen: 19.309 ug/l  
 RT: 9.765 min Scan# 2899  
 Delta R.T. 0.003 min  
 Lab File: VN068405.D  
 Acq: 3 Sep 2021 13:50



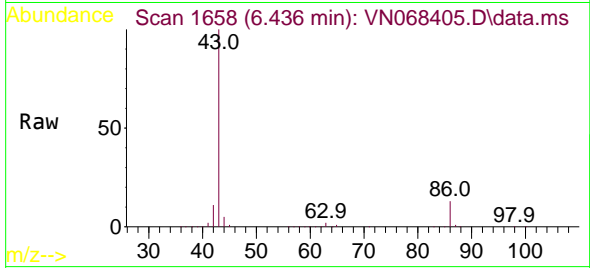
Tgt Ion: 83 Resp: 179922  
 Ion Ratio Lower Upper  
 83 100  
 85 64.2 51.2 76.8  
 127 10.4 6.6 9.8#



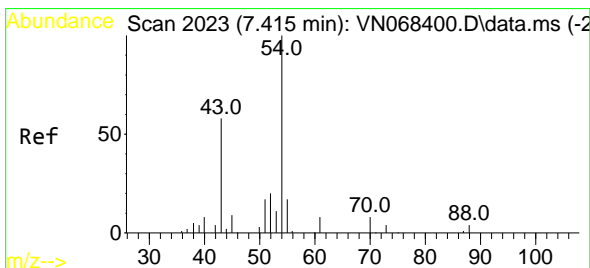
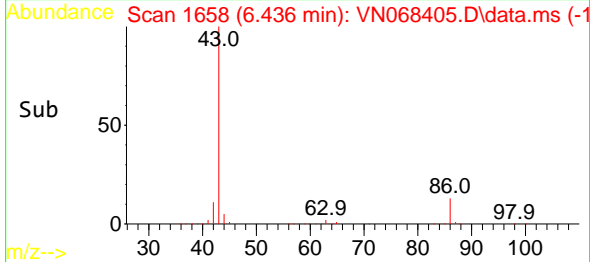
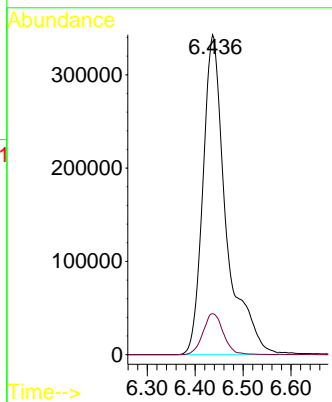


#42  
 Vinyl Acetate  
 Concen: 98.050 ug/l  
 RT: 6.436 min Scan# 1658  
 Delta R.T. 0.000 min  
 Lab File: VN068405.D  
 Acq: 3 Sep 2021 13:50

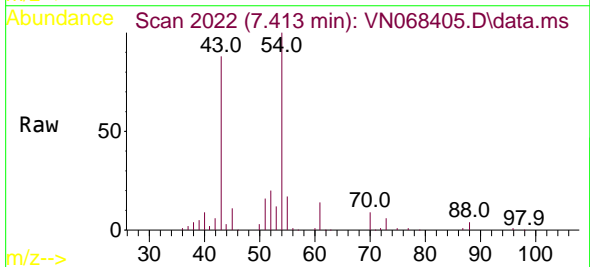
Instrument :  
 MSVOA\_N  
 ClientSampled :



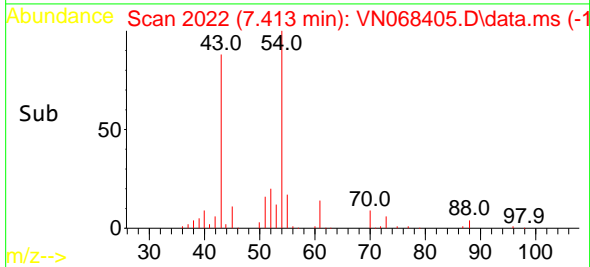
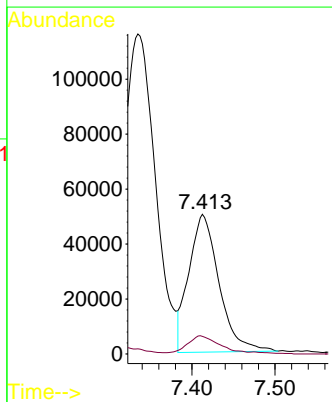
Tgt Ion: 43 Resp: 1153940  
 Ion Ratio Lower Upper  
 43 100  
 86 11.3 6.4 9.6#



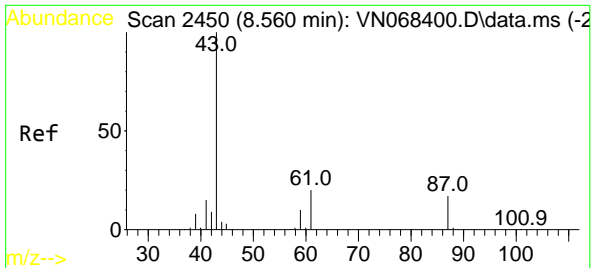
#43  
 Ethyl Acetate  
 Concen: 20.489 ug/l  
 RT: 7.413 min Scan# 2022  
 Delta R.T. -0.002 min  
 Lab File: VN068405.D  
 Acq: 3 Sep 2021 13:50



Tgt Ion: 43 Resp: 126782  
 Ion Ratio Lower Upper  
 43 100  
 45 11.8 1.0 1.6#

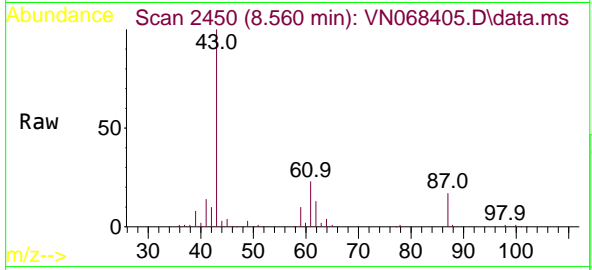




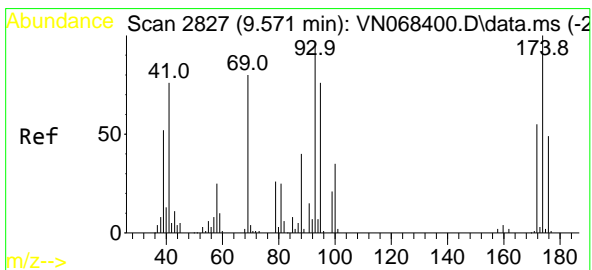
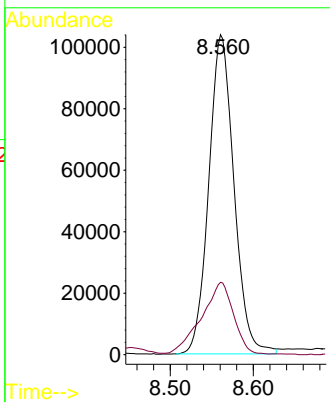
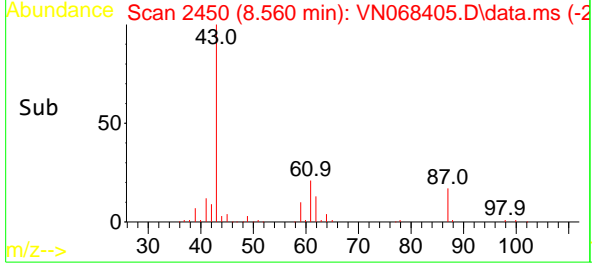


#44  
 Isopropyl Acetate  
 Concen: 19.504 ug/l  
 RT: 8.560 min Scan# 2450  
 Delta R.T. 0.000 min  
 Lab File: VN068405.D  
 Acq: 3 Sep 2021 13:50

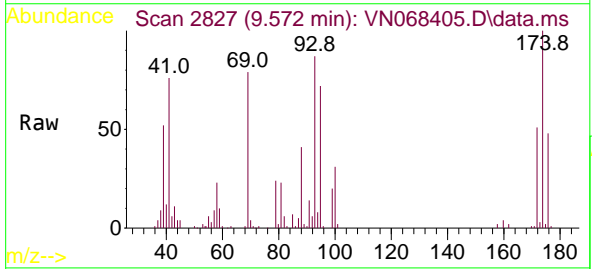
Instrument :  
 MSVOA\_N  
 ClientSampled :



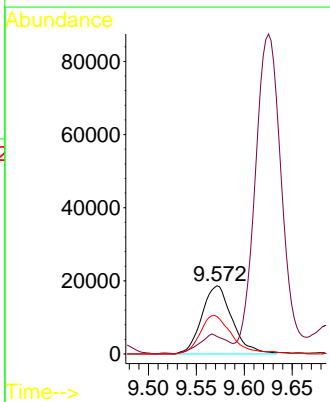
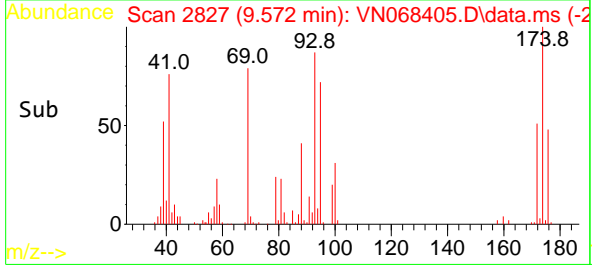
Tgt Ion: 43 Resp: 219254  
 Ion Ratio Lower Upper  
 43 100  
 61 28.4 19.0 28.6

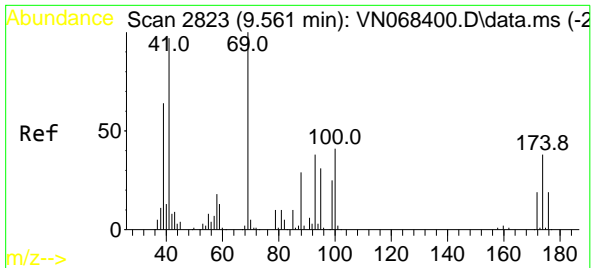


#45  
 1,4-Dioxane  
 Concen: 408.717 ug/l  
 RT: 9.572 min Scan# 2827  
 Delta R.T. 0.000 min  
 Lab File: VN068405.D  
 Acq: 3 Sep 2021 13:50



Tgt Ion: 88 Resp: 41070  
 Ion Ratio Lower Upper  
 88 100  
 43 26.0 18.0 27.0  
 58 57.7 57.7 86.5#

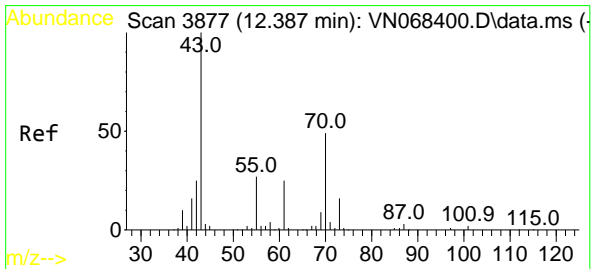
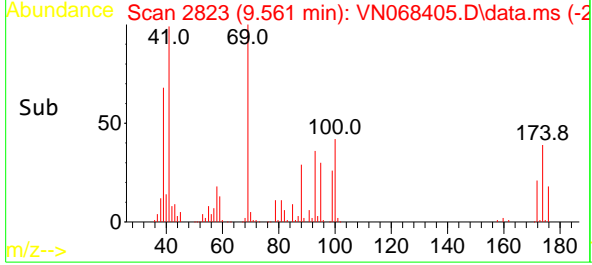
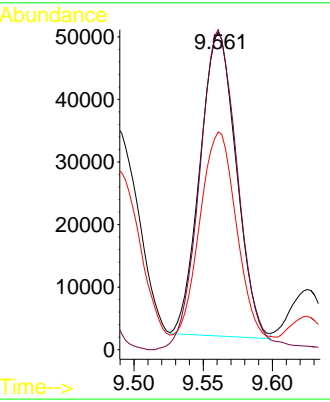
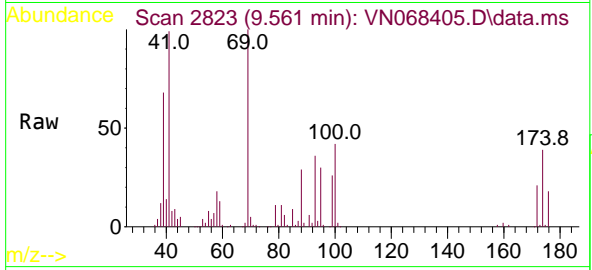




#46  
Methyl methacrylate  
Concen: 18.605 ug/l  
RT: 9.561 min Scan# 2823  
Delta R.T. 0.000 min  
Lab File: VN068405.D  
Acq: 3 Sep 2021 13:50

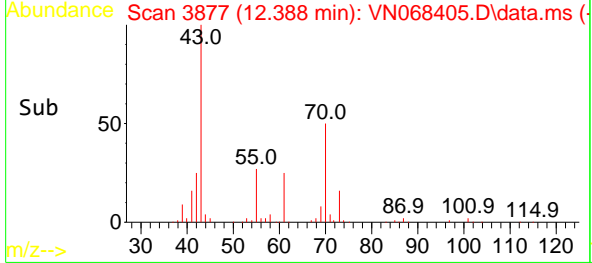
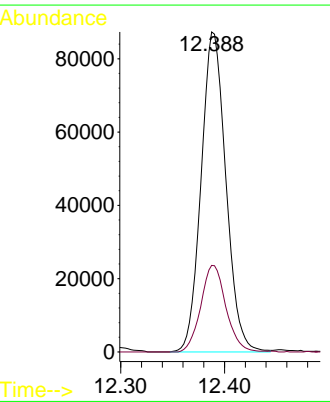
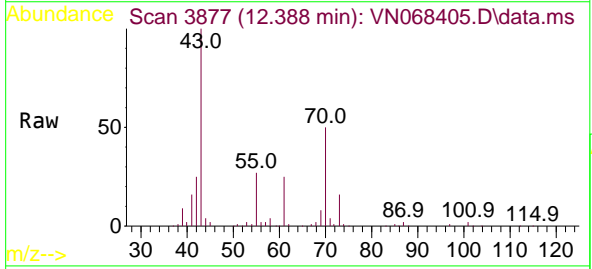
Instrument :  
MSVOA\_N  
ClientSampled :

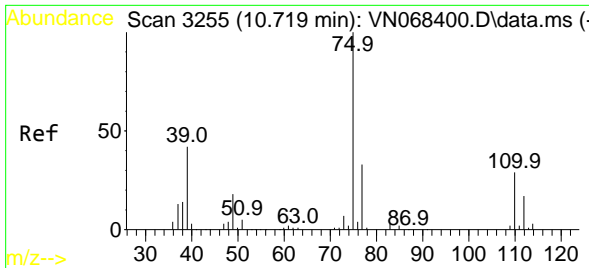
Tgt Ion: 41 Resp: 88425  
Ion Ratio Lower Upper  
41 100  
69 104.0 38.0 114.1  
39 67.8 33.9 101.7



#47  
n-amy1 Acetate  
Concen: 18.804 ug/l  
RT: 12.388 min Scan# 3877  
Delta R.T. 0.000 min  
Lab File: VN068405.D  
Acq: 3 Sep 2021 13:50

Tgt Ion: 43 Resp: 144625  
Ion Ratio Lower Upper  
43 100  
55 27.5 17.6 26.4#

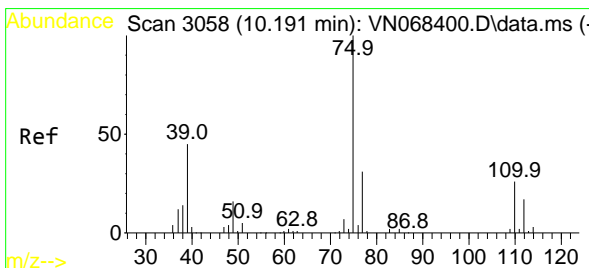
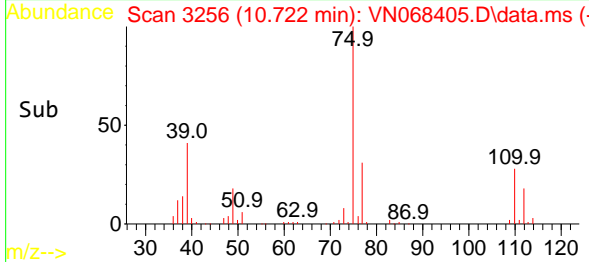
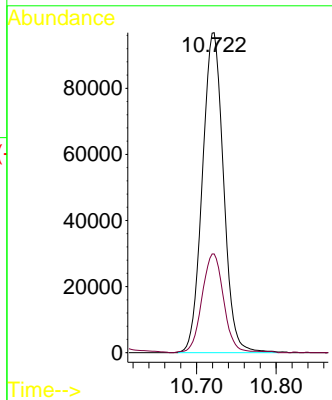
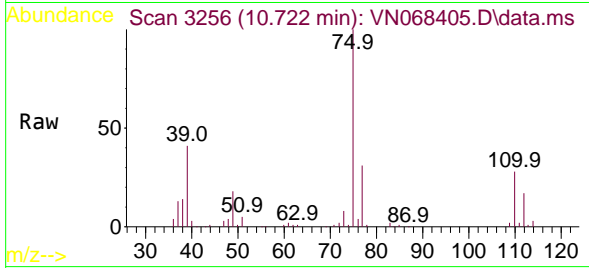




#48  
 t-1,3-Dichloropropene  
 Concen: 19.469 ug/l  
 RT: 10.722 min Scan# 3256  
 Delta R.T. 0.003 min  
 Lab File: VN068405.D  
 Acq: 3 Sep 2021 13:50

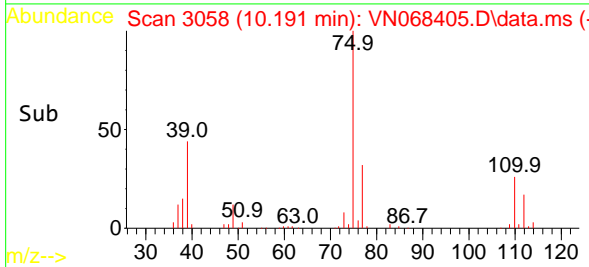
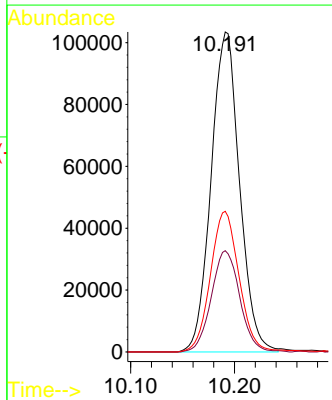
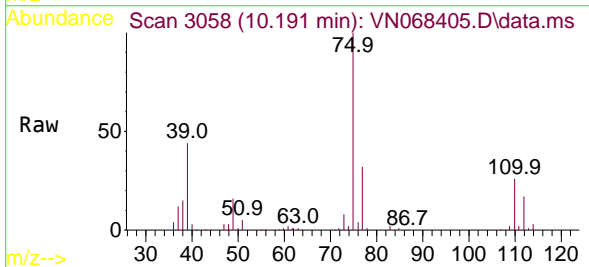
Instrument :  
 MSVOA\_N  
 ClientSampled :

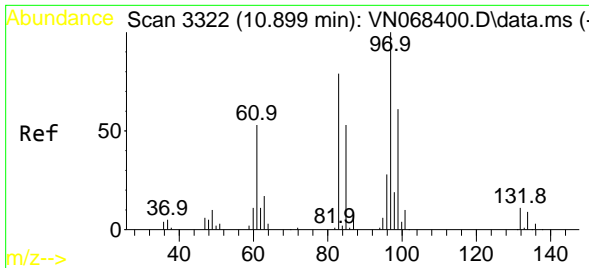
Tgt Ion: 75 Resp: 178534  
 Ion Ratio Lower Upper  
 75 100  
 77 30.9 24.6 37.0



#49  
 cis-1,3-Dichloropropene  
 Concen: 19.449 ug/l  
 RT: 10.191 min Scan# 3058  
 Delta R.T. 0.000 min  
 Lab File: VN068405.D  
 Acq: 3 Sep 2021 13:50

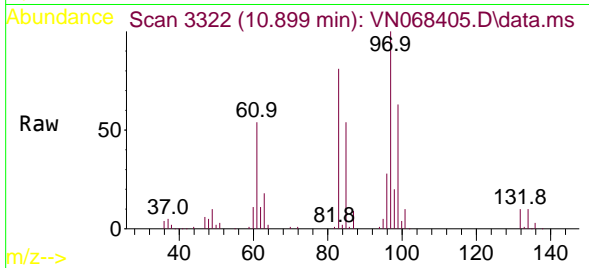
Tgt Ion: 75 Resp: 196713  
 Ion Ratio Lower Upper  
 75 100  
 77 31.6 26.0 39.0  
 39 44.0 50.6 76.0#





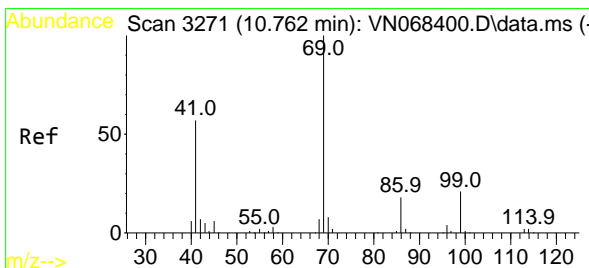
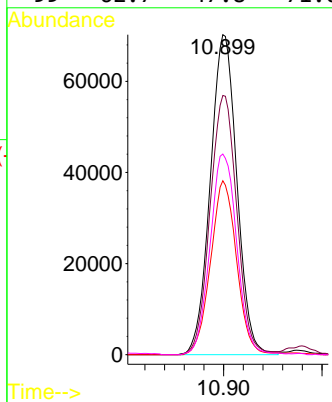
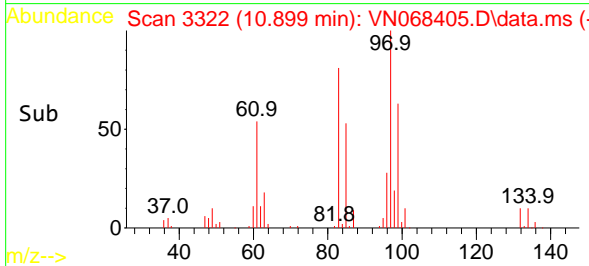
#50  
 1,1,2-Trichloroethane  
 Concen: 19.379 ug/l  
 RT: 10.899 min Scan# 3322  
 Delta R.T. 0.000 min  
 Lab File: VN068405.D  
 Acq: 3 Sep 2021 13:50

Instrument :  
 MSVOA\_N  
 ClientSampled :

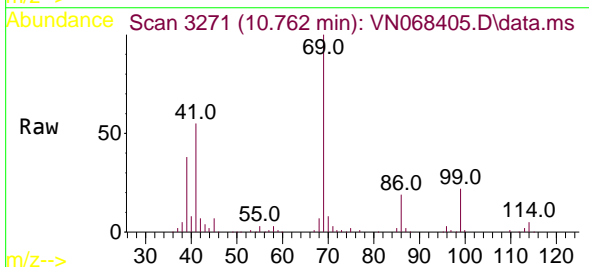


Tgt Ion: 97 Resp: 131847

Ion	Ratio	Lower	Upper
97	100		
83	81.0	69.6	104.4
85	54.4	45.2	67.8
99	62.7	47.8	71.6

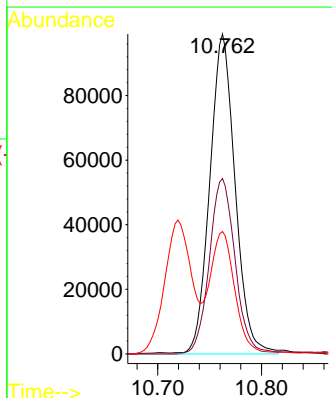
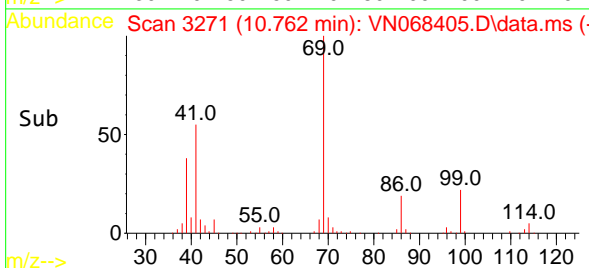


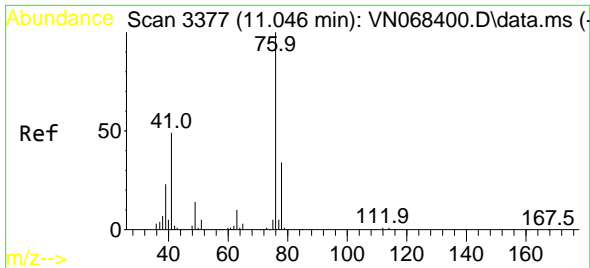
#51  
 Ethyl methacrylate  
 Concen: 19.189 ug/l  
 RT: 10.762 min Scan# 3271  
 Delta R.T. 0.000 min  
 Lab File: VN068405.D  
 Acq: 3 Sep 2021 13:50



Tgt Ion: 69 Resp: 167854

Ion	Ratio	Lower	Upper
69	100		
41	54.3	36.8	110.4
39	37.8	23.8	71.2

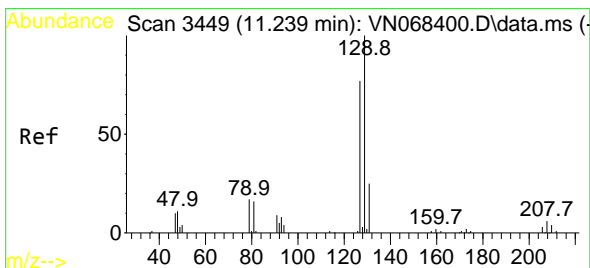
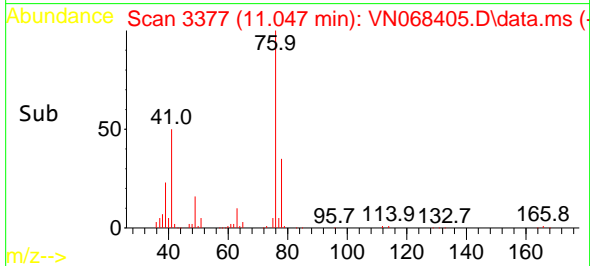
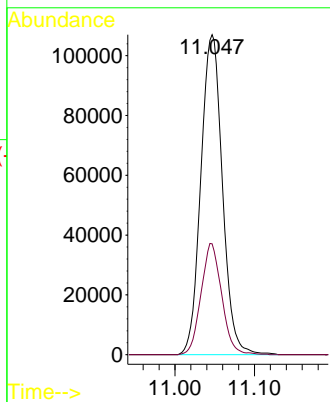
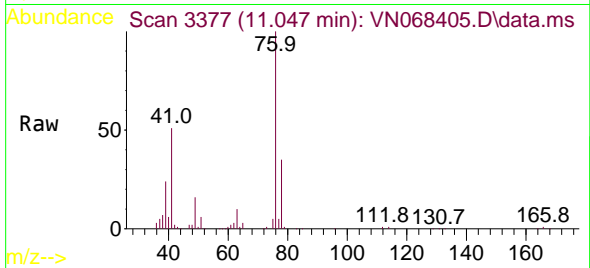




#52  
 1,3-Dichloropropane  
 Concen: 19.657 ug/l  
 RT: 11.047 min Scan# 3377  
 Delta R.T. 0.000 min  
 Lab File: VN068405.D  
 Acq: 3 Sep 2021 13:50

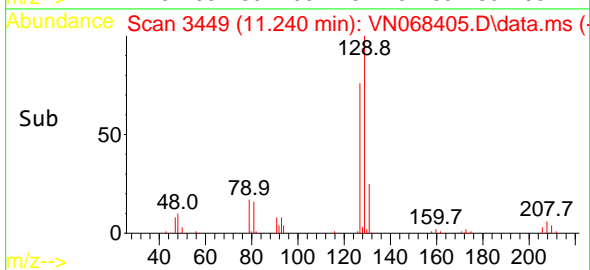
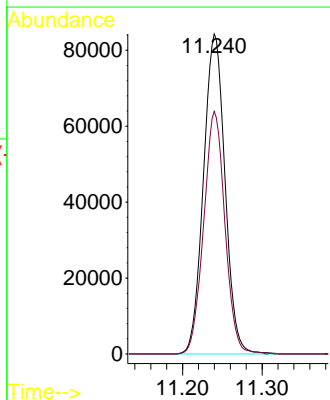
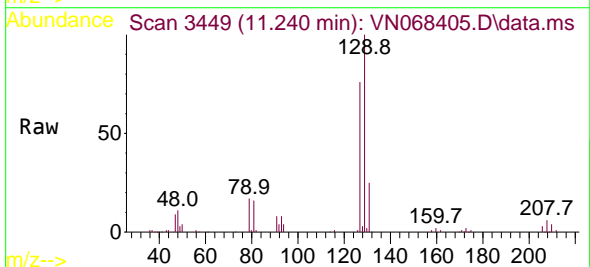
Instrument :  
 MSVOA\_N  
 ClientSampled :

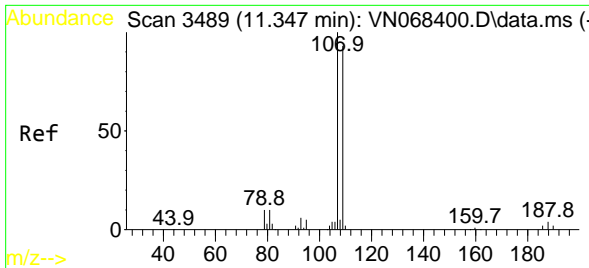
Tgt Ion: 76 Resp: 201926  
 Ion Ratio Lower Upper  
 76 100  
 78 33.1 0.0 64.0



#53  
 Dibromochloromethane  
 Concen: 19.355 ug/l  
 RT: 11.240 min Scan# 3449  
 Delta R.T. 0.000 min  
 Lab File: VN068405.D  
 Acq: 3 Sep 2021 13:50

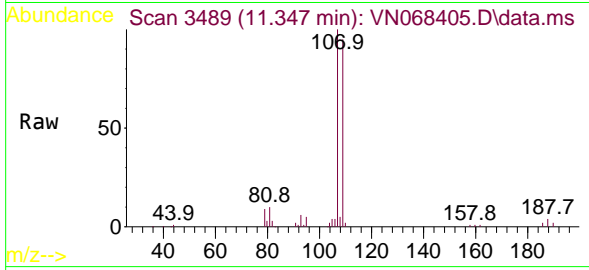
Tgt Ion:129 Resp: 158704  
 Ion Ratio Lower Upper  
 129 100  
 127 74.7 38.8 116.4



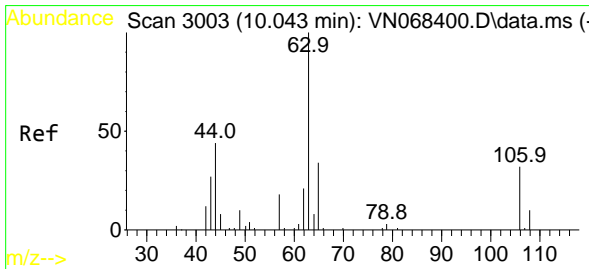
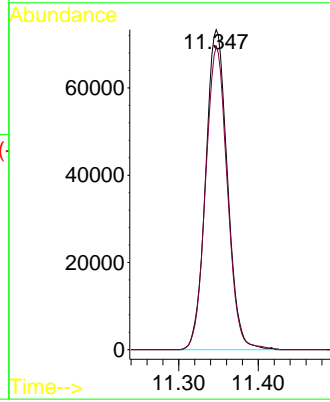
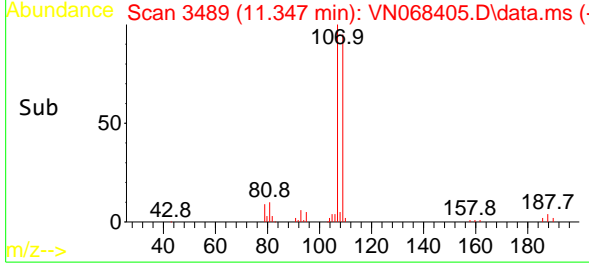


#54  
 1,2-Dibromoethane  
 Concen: 19.582 ug/l  
 RT: 11.347 min Scan# 3489  
 Delta R.T. 0.000 min  
 Lab File: VN068405.D  
 Acq: 3 Sep 2021 13:50

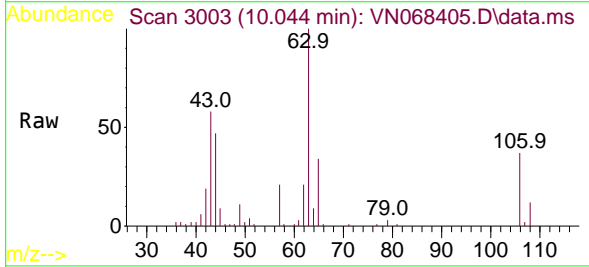
Instrument :  
 MSVOA\_N  
 ClientSampled :



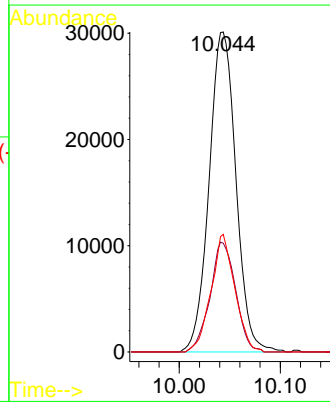
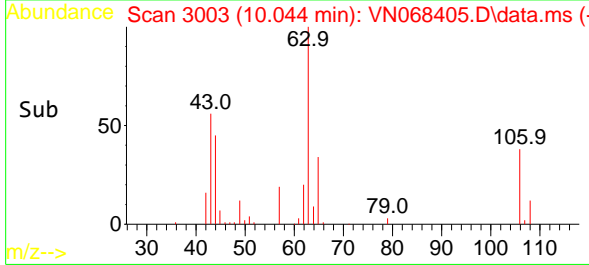
Tgt Ion:107 Resp: 139259  
 Ion Ratio Lower Upper  
 107 100  
 109 94.4 75.0 112.6

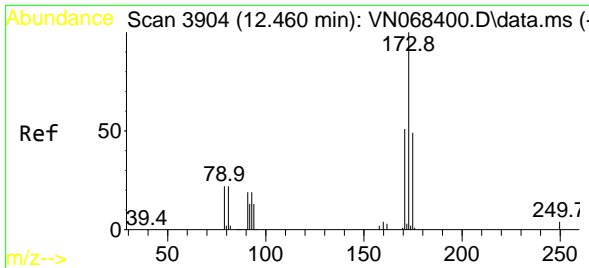


#55  
 2-Chloroethyl vinyl ether  
 Concen: 94.020 ug/l  
 RT: 10.044 min Scan# 3003  
 Delta R.T. 0.001 min  
 Lab File: VN068405.D  
 Acq: 3 Sep 2021 13:50



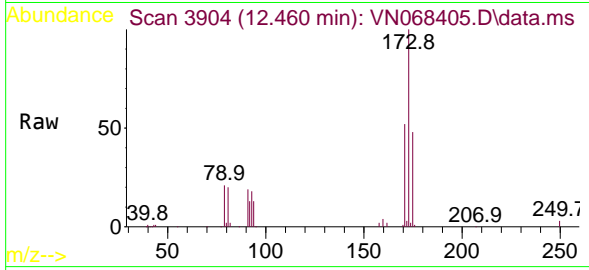
Tgt Ion: 63 Resp: 55576  
 Ion Ratio Lower Upper  
 63 100  
 65 32.7 25.6 38.4  
 106 32.7 20.0 30.0#



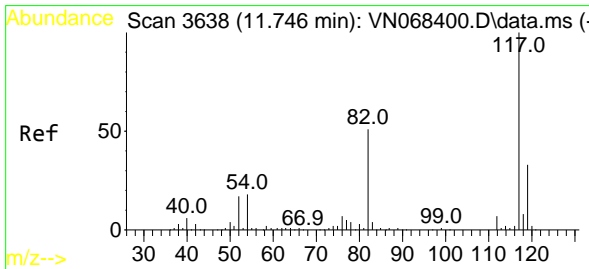
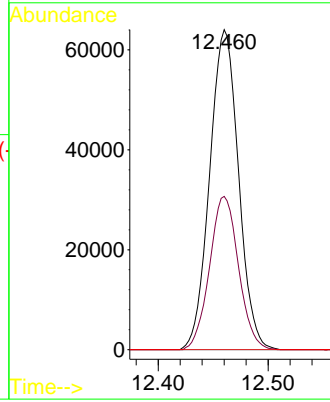
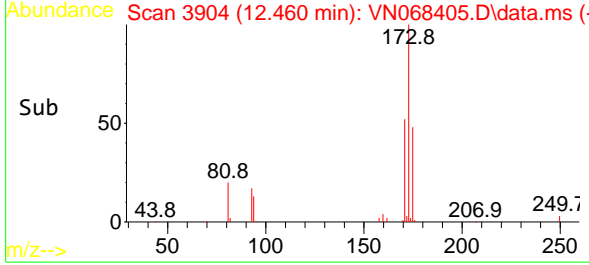


#56  
 Bromoform  
 Concen: 18.614 ug/l  
 RT: 12.460 min Scan# 3904  
 Delta R.T. 0.000 min  
 Lab File: VN068405.D  
 Acq: 3 Sep 2021 13:50

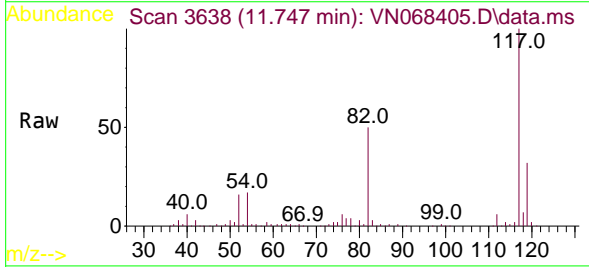
Instrument :  
 MSVOA\_N  
 ClientSampled :



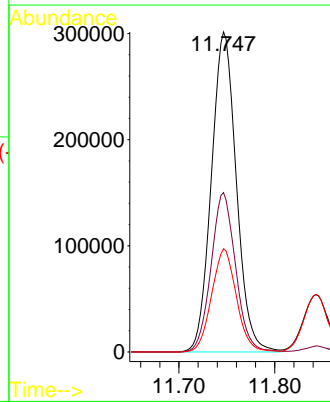
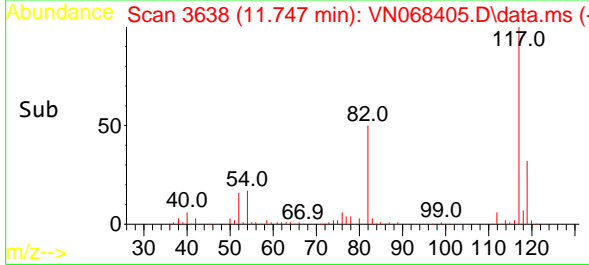
Tgt Ion:173 Resp: 116795  
 Ion Ratio Lower Upper  
 173 100  
 175 48.1 39.4 59.2  
 254 0.0 0.0 0.0

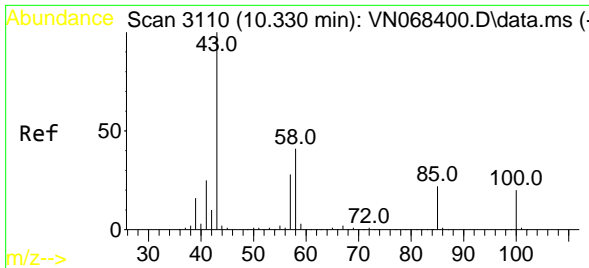


#57  
 Chlorobenzene-d5  
 Concen: 30.000 ug/l  
 RT: 11.747 min Scan# 3638  
 Delta R.T. 0.000 min  
 Lab File: VN068405.D  
 Acq: 3 Sep 2021 13:50



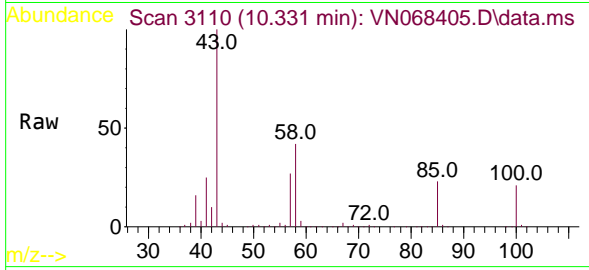
Tgt Ion:117 Resp: 544897  
 Ion Ratio Lower Upper  
 117 100  
 82 49.0 52.5 78.7#  
 119 32.0 25.8 38.8



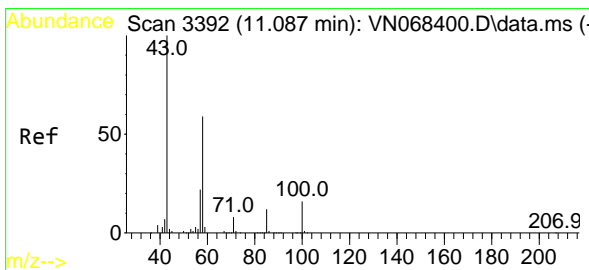
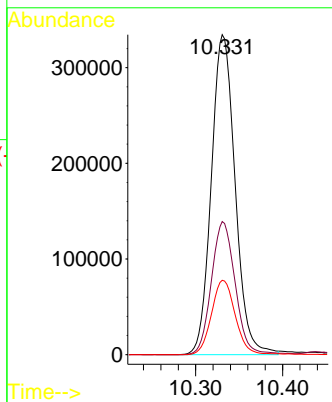
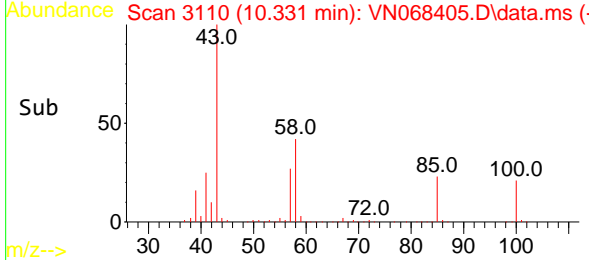


#58  
 4-Methyl-2-Pentanone  
 Concen: 100.545 ug/l  
 RT: 10.331 min Scan# 3110  
 Delta R.T. 0.000 min  
 Lab File: VN068405.D  
 Acq: 3 Sep 2021 13:50

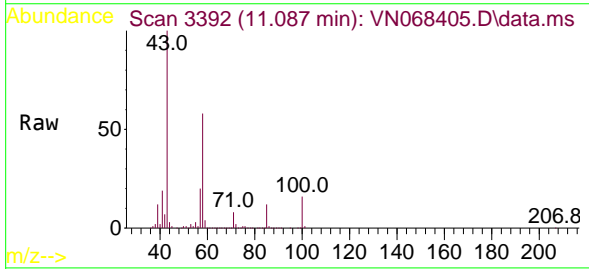
Instrument :  
 MSVOA\_N  
 ClientSampled :



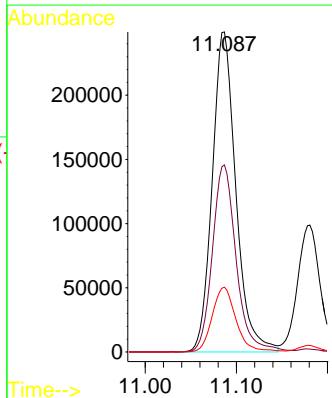
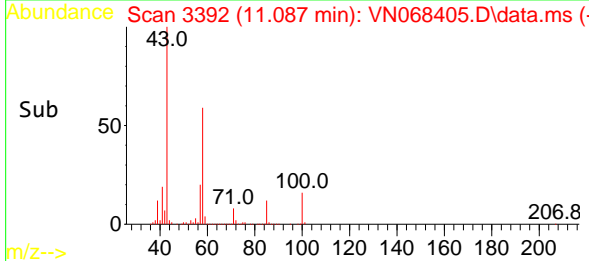
Tgt Ion: 43 Resp: 637533  
 Ion Ratio Lower Upper  
 43 100  
 58 41.5 29.0 43.4  
 85 23.0 13.2 19.8#



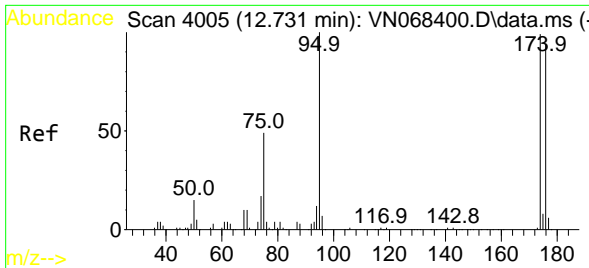
#59  
 2-Hexanone  
 Concen: 102.159 ug/l  
 RT: 11.087 min Scan# 3392  
 Delta R.T. 0.000 min  
 Lab File: VN068405.D  
 Acq: 3 Sep 2021 13:50



Tgt Ion: 43 Resp: 449538  
 Ion Ratio Lower Upper  
 43 100  
 58 58.7 39.4 59.0  
 57 20.4 14.4 21.6

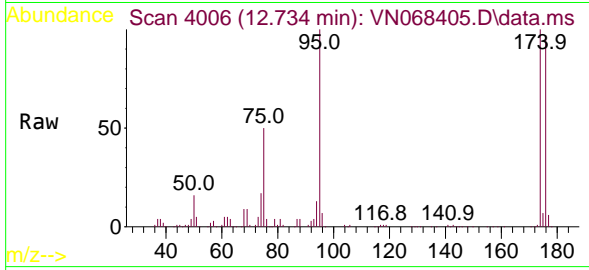




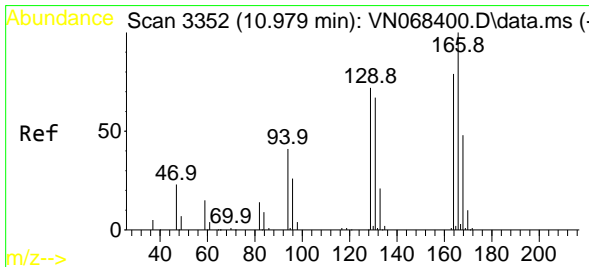
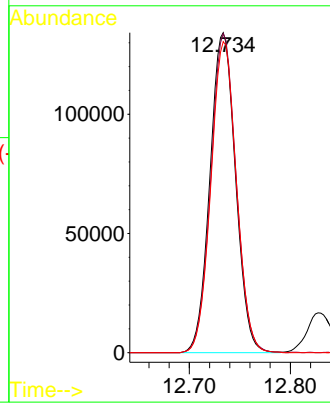
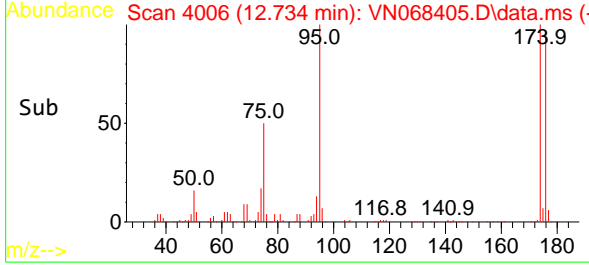


#60  
 4-Bromofluorobenzene  
 Concen: 30.580 ug/l  
 RT: 12.734 min Scan# 4006  
 Delta R.T. 0.003 min  
 Lab File: VN068405.D  
 Acq: 3 Sep 2021 13:50

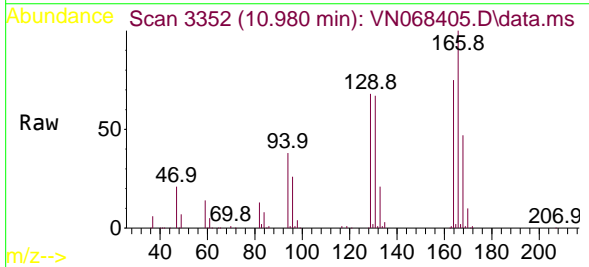
Instrument :  
 MSVOA\_N  
 ClientSampled :



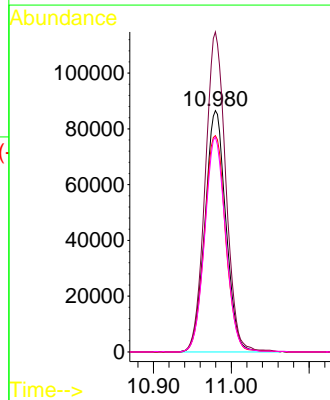
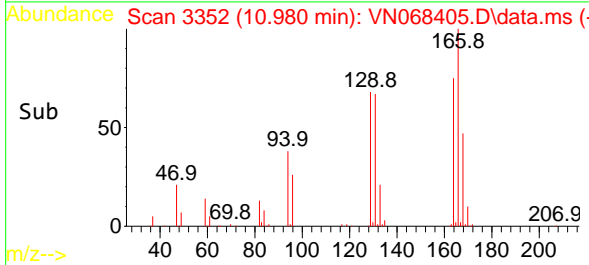
Tgt Ion: 95 Resp: 235973  
 Ion Ratio Lower Upper  
 95 100  
 174 98.9 47.7 71.5#  
 176 96.8 45.7 68.5#

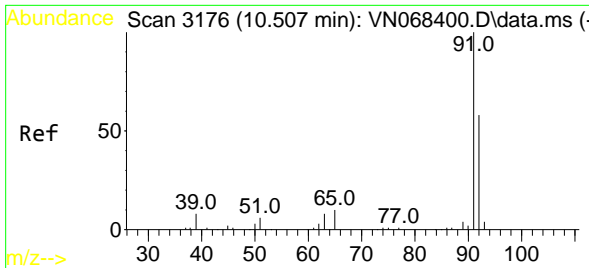


#61  
 Tetrachloroethene  
 Concen: 19.283 ug/l  
 RT: 10.980 min Scan# 3352  
 Delta R.T. 0.000 min  
 Lab File: VN068405.D  
 Acq: 3 Sep 2021 13:50



Tgt Ion: 164 Resp: 162456  
 Ion Ratio Lower Upper  
 164 100  
 166 132.6 101.0 151.4  
 129 89.6 85.5 128.3  
 131 89.0 81.5 122.3

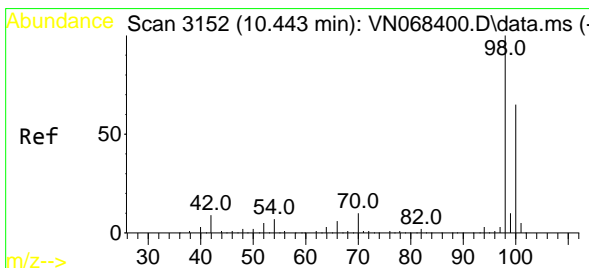
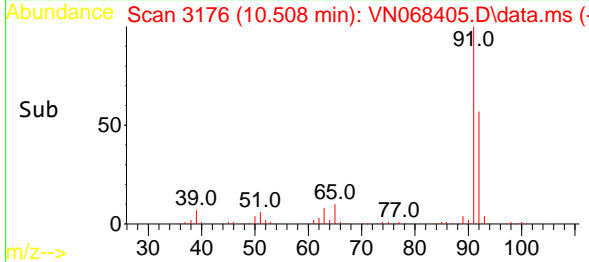
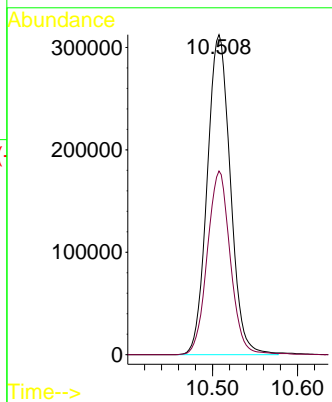
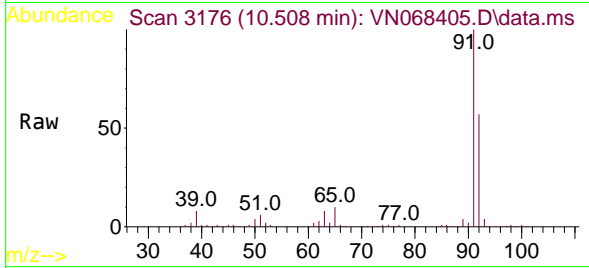




#62  
 Toluene  
 Concen: 19.790 ug/l  
 RT: 10.508 min Scan# 3176  
 Delta R.T. 0.000 min  
 Lab File: VN068405.D  
 Acq: 3 Sep 2021 13:50

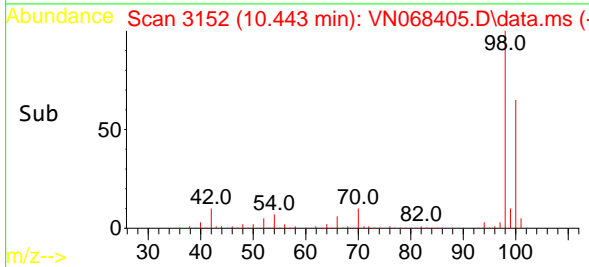
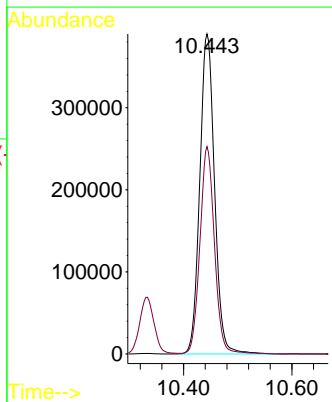
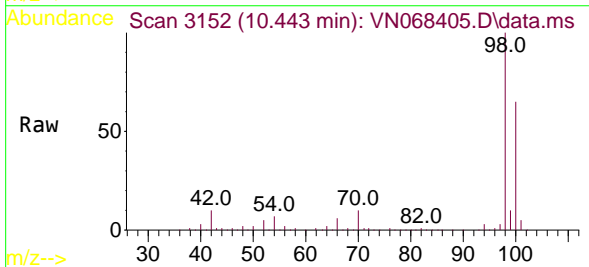
Instrument :  
 MSVOA\_N  
 ClientSampled :

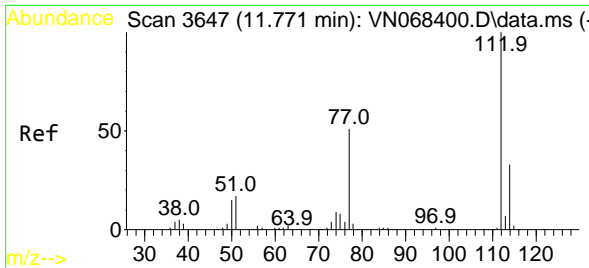
Tgt Ion: 91 Resp: 591674  
 Ion Ratio Lower Upper  
 91 100  
 92 57.0 46.1 69.1



#63  
 Toluene-d8  
 Concen: 30.417 ug/l  
 RT: 10.443 min Scan# 3152  
 Delta R.T. 0.000 min  
 Lab File: VN068405.D  
 Acq: 3 Sep 2021 13:50

Tgt Ion: 98 Resp: 738095  
 Ion Ratio Lower Upper  
 98 100  
 100 63.1 51.2 76.8

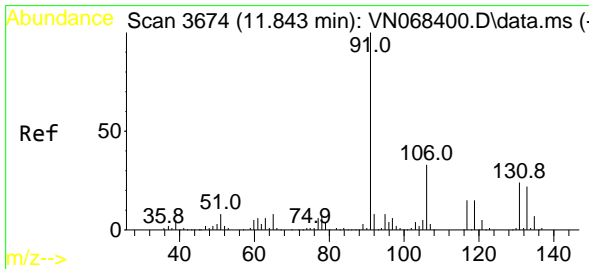
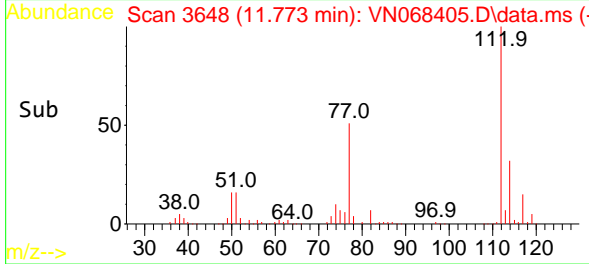
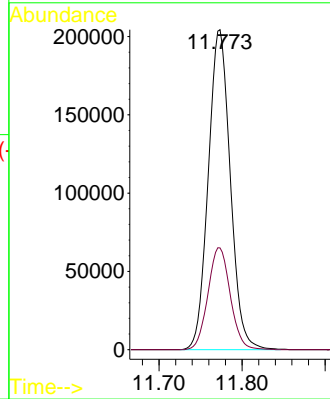
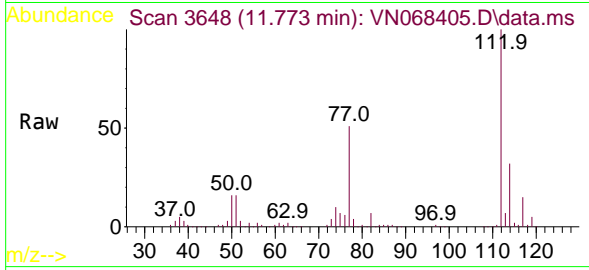




#64  
Chlorobenzene  
Concen: 19.503 ug/l  
RT: 11.773 min Scan# 3648  
Delta R.T. 0.003 min  
Lab File: VN068405.D  
Acq: 3 Sep 2021 13:50

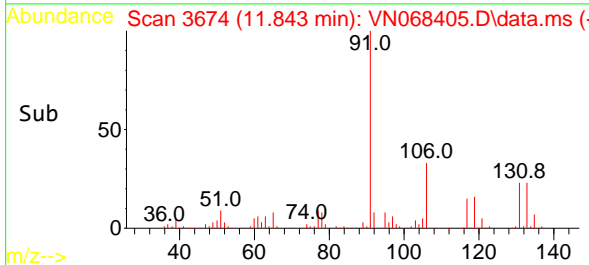
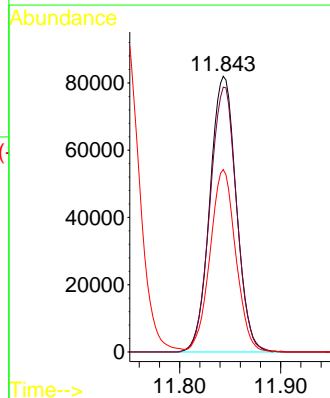
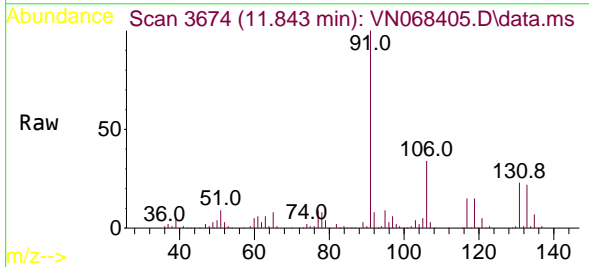
Instrument :  
MSVOA\_N  
ClientSampled :

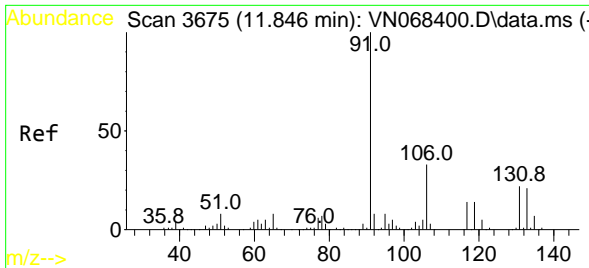
Tgt Ion:112 Resp: 375930  
Ion Ratio Lower Upper  
112 100  
114 31.8 25.4 38.0



#65  
1,1,1,2-Tetrachloroethane  
Concen: 19.308 ug/l  
RT: 11.843 min Scan# 3674  
Delta R.T. 0.000 min  
Lab File: VN068405.D  
Acq: 3 Sep 2021 13:50

Tgt Ion:131 Resp: 149007  
Ion Ratio Lower Upper  
131 100  
133 96.6 0.0 189.6  
119 63.8 0.0 130.0

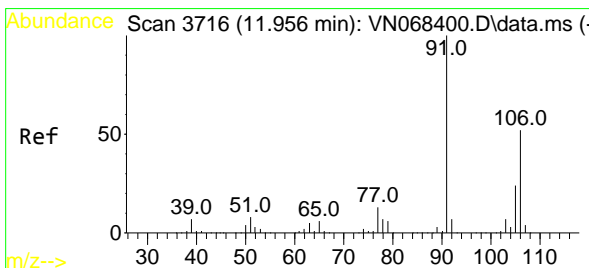
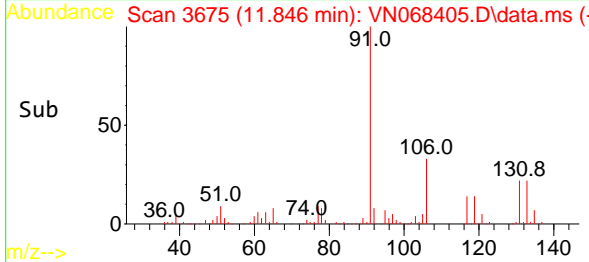
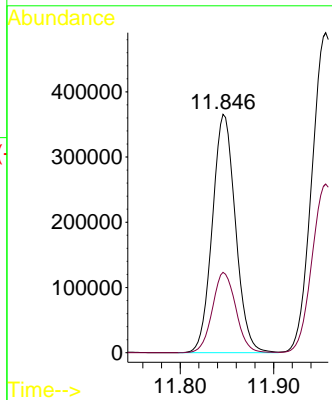
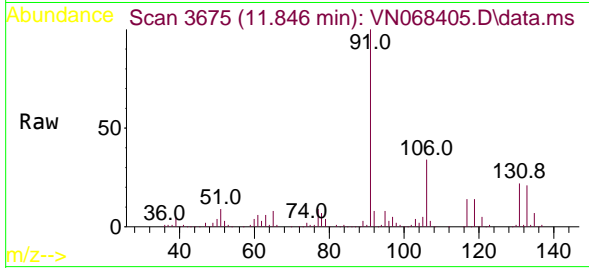




#66  
 Ethyl Benzene  
 Concen: 19.523 ug/l  
 RT: 11.846 min Scan# 3675  
 Delta R.T. 0.000 min  
 Lab File: VN068405.D  
 Acq: 3 Sep 2021 13:50

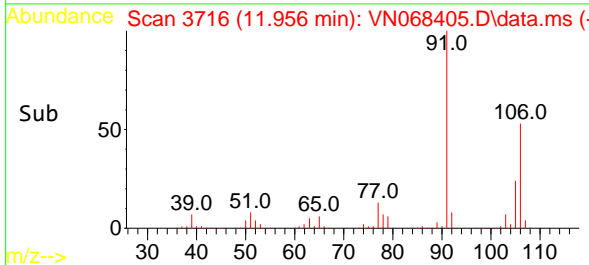
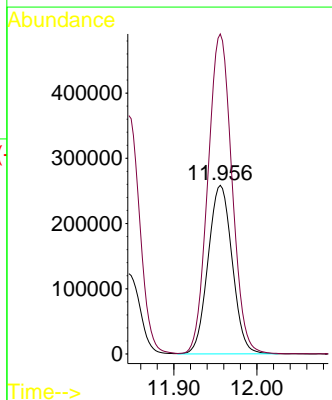
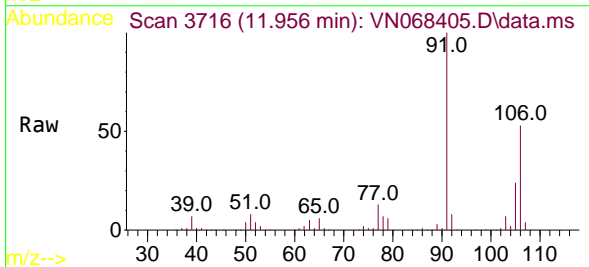
Instrument :  
 MSVOA\_N  
 ClientSampled :

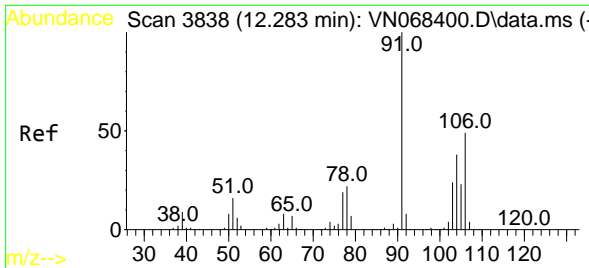
Tgt Ion: 91 Resp: 628299  
 Ion Ratio Lower Upper  
 91 100  
 106 33.7 23.4 35.0



#67  
 m/p-Xylenes  
 Concen: 39.451 ug/l  
 RT: 11.956 min Scan# 3716  
 Delta R.T. 0.000 min  
 Lab File: VN068405.D  
 Acq: 3 Sep 2021 13:50

Tgt Ion: 106 Resp: 520596  
 Ion Ratio Lower Upper  
 106 100  
 91 189.6 181.3 271.9

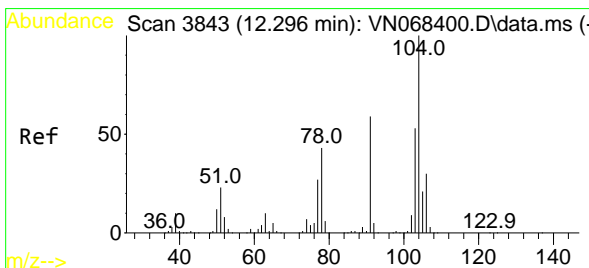
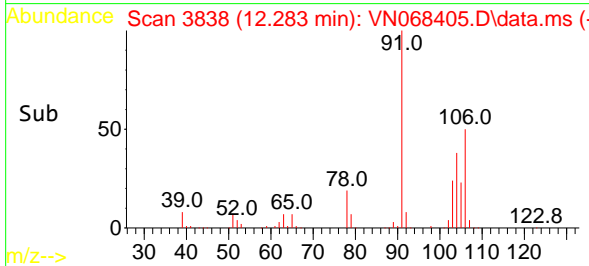
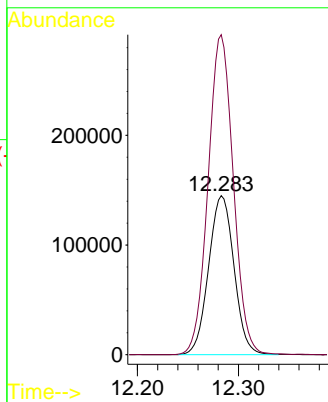
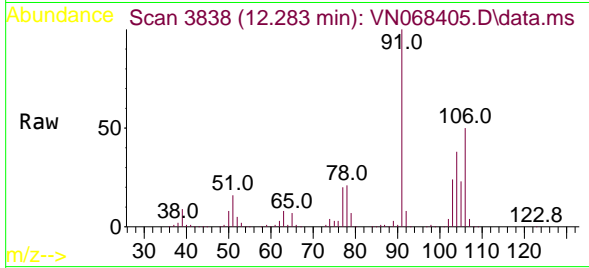




#68  
 o-Xylene  
 Concen: 19.802 ug/l  
 RT: 12.283 min Scan# 3838  
 Delta R.T. 0.000 min  
 Lab File: VN068405.D  
 Acq: 3 Sep 2021 13:50

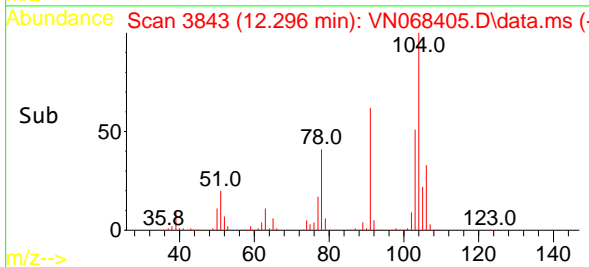
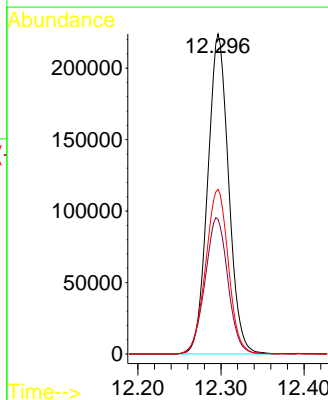
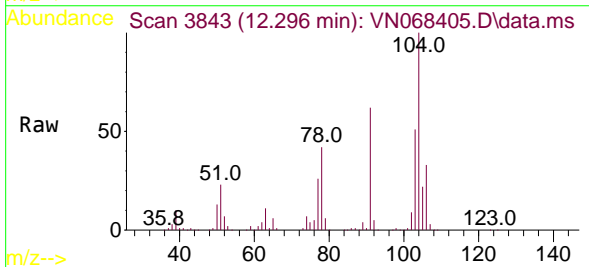
Instrument :  
 MSVOA\_N  
 ClientSampled :

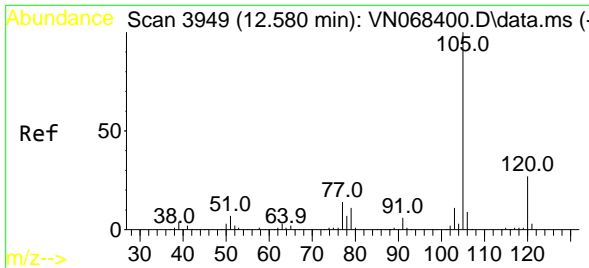
Tgt Ion:106 Resp: 253095  
 Ion Ratio Lower Upper  
 106 100  
 91 200.0 120.0 360.0



#69  
 Styrene  
 Concen: 19.429 ug/l  
 RT: 12.296 min Scan# 3843  
 Delta R.T. 0.000 min  
 Lab File: VN068405.D  
 Acq: 3 Sep 2021 13:50

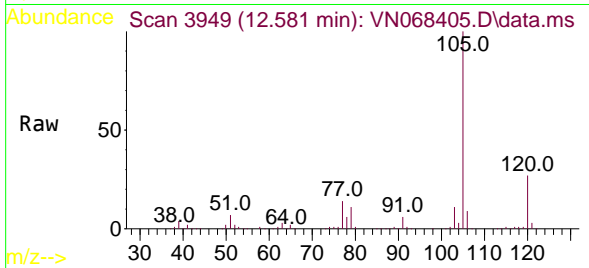
Tgt Ion:104 Resp: 392071  
 Ion Ratio Lower Upper  
 104 100  
 78 46.6 48.2 72.2#  
 103 55.9 44.5 66.7



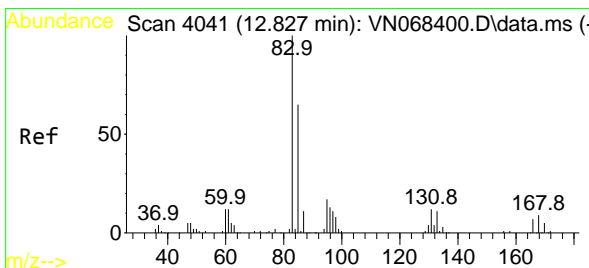
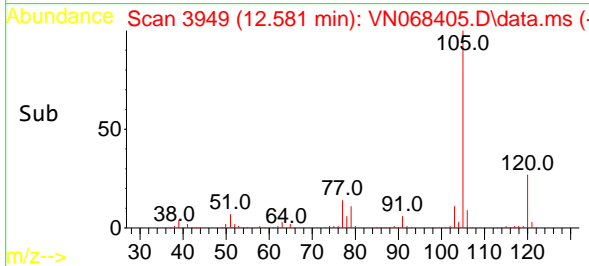
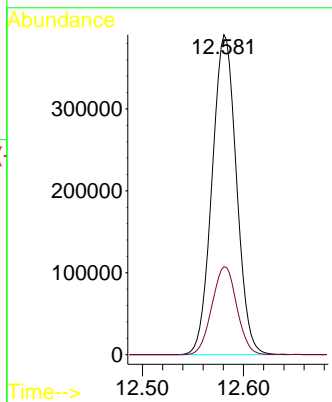


#70  
 Isopropylbenzene  
 Concen: 19.860 ug/l  
 RT: 12.581 min Scan# 3949  
 Delta R.T. 0.000 min  
 Lab File: VN068405.D  
 Acq: 3 Sep 2021 13:50

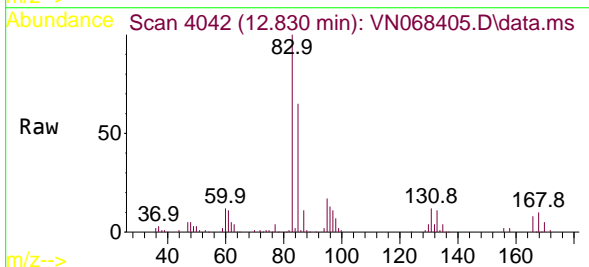
Instrument :  
 MSVOA\_N  
 ClientSampled :



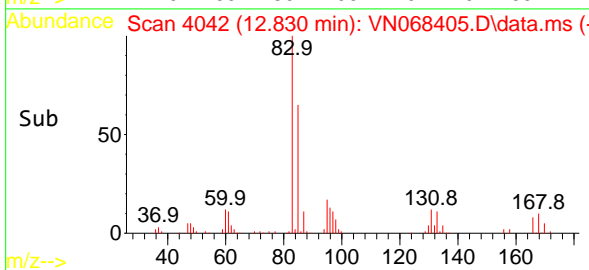
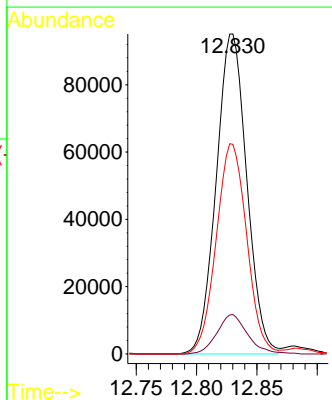
Tgt Ion:105 Resp: 653814  
 Ion Ratio Lower Upper  
 105 100  
 120 28.1 17.6 32.6

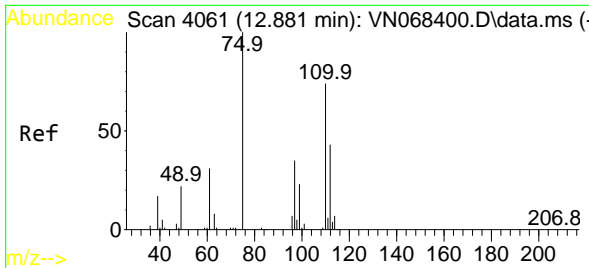


#71  
 1,1,2,2-Tetrachloroethane  
 Concen: 19.913 ug/l  
 RT: 12.830 min Scan# 4042  
 Delta R.T. 0.003 min  
 Lab File: VN068405.D  
 Acq: 3 Sep 2021 13:50



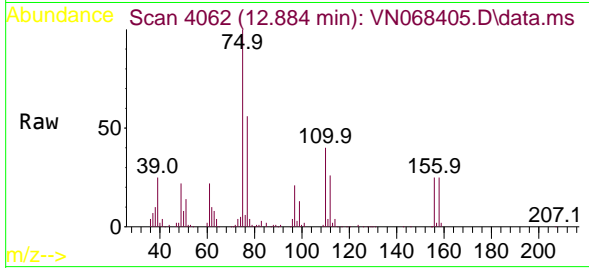
Tgt Ion: 83 Resp: 167653  
 Ion Ratio Lower Upper  
 83 100  
 131 12.3 4.7 14.0  
 85 65.5 32.2 96.6



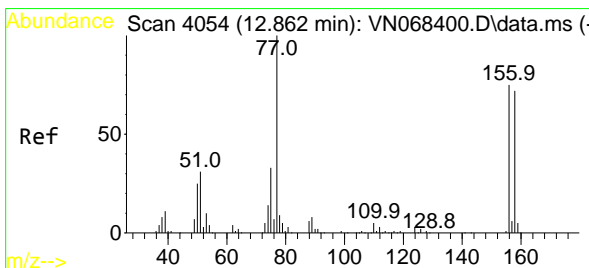
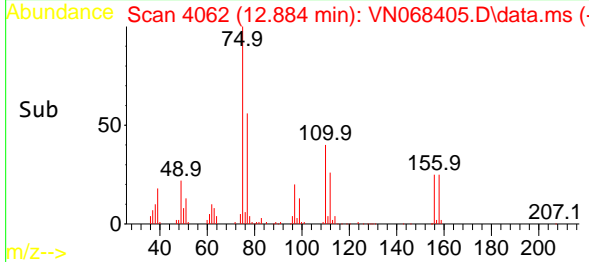
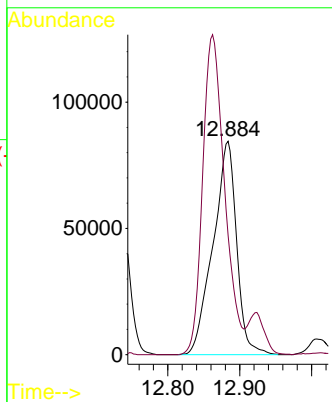


#72  
 1,2,3-Trichloropropane  
 Concen: 27.822 ug/l  
 RT: 12.884 min Scan# 4062  
 Delta R.T. 0.003 min  
 Lab File: VN068405.D  
 Acq: 3 Sep 2021 13:50

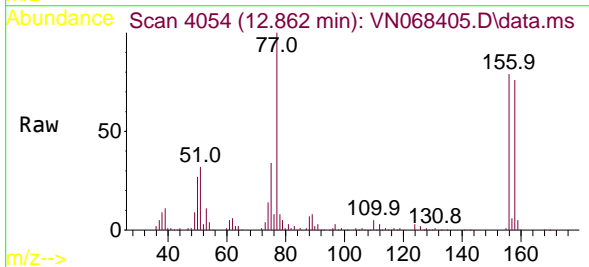
Instrument :  
 MSVOA\_N  
 ClientSampled :



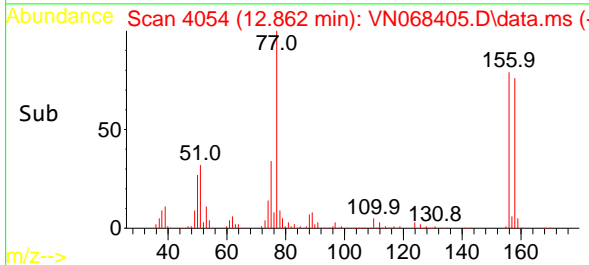
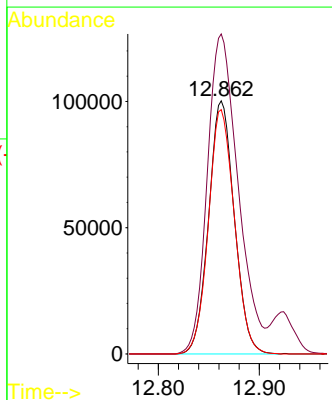
Tgt Ion: 75 Resp: 192021  
 Ion Ratio Lower Upper  
 75 100  
 77 139.9 0.0 374.2

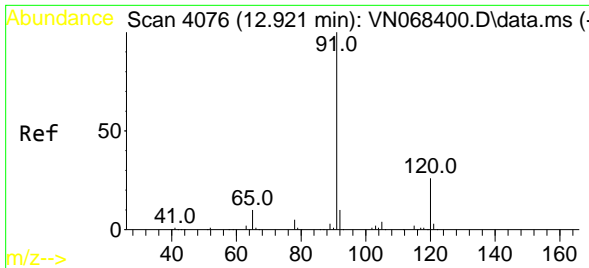


#73  
 Bromobenzene  
 Concen: 19.437 ug/l  
 RT: 12.862 min Scan# 4054  
 Delta R.T. 0.000 min  
 Lab File: VN068405.D  
 Acq: 3 Sep 2021 13:50



Tgt Ion: 156 Resp: 177090  
 Ion Ratio Lower Upper  
 156 100  
 77 151.7 0.0 548.0  
 158 97.6 0.0 194.0

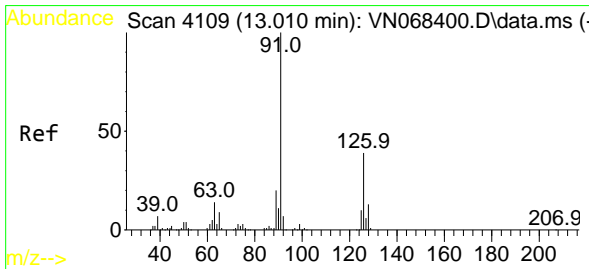
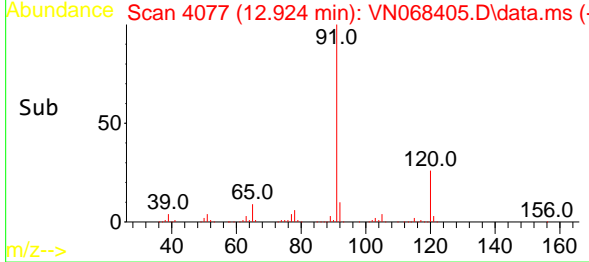
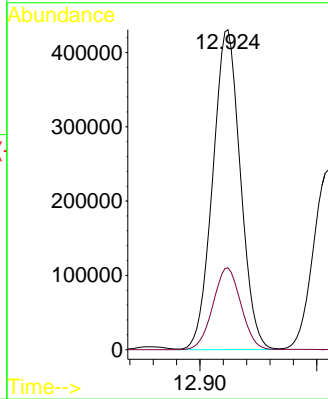
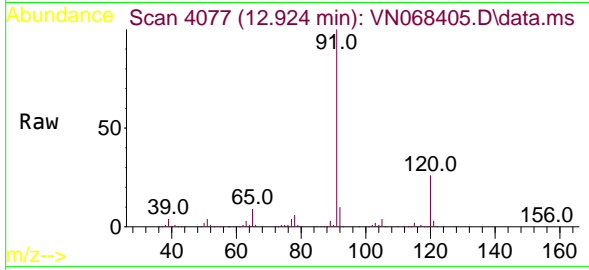




#74  
 n-propylbenzene  
 Concen: 19.899 ug/l  
 RT: 12.924 min Scan# 4077  
 Delta R.T. 0.003 min  
 Lab File: VN068405.D  
 Acq: 3 Sep 2021 13:50

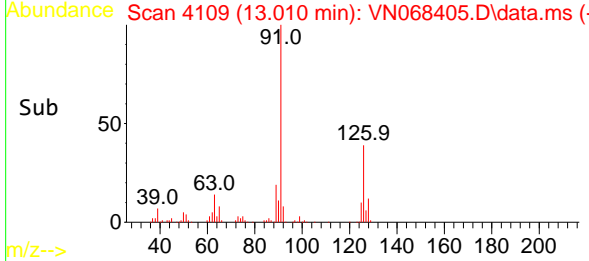
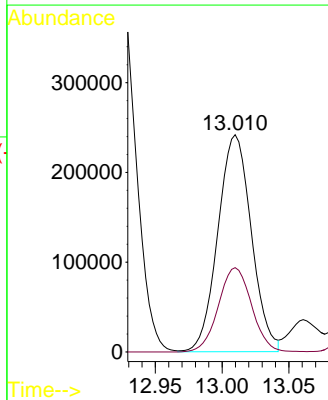
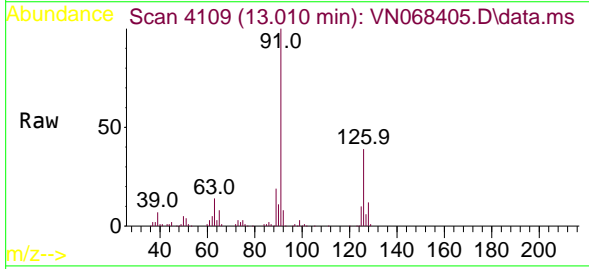
Instrument :  
 MSVOA\_N  
 ClientSampled :

Tgt Ion: 91 Resp: 707622  
 Ion Ratio Lower Upper  
 91 100  
 120 25.9 0.0 41.0

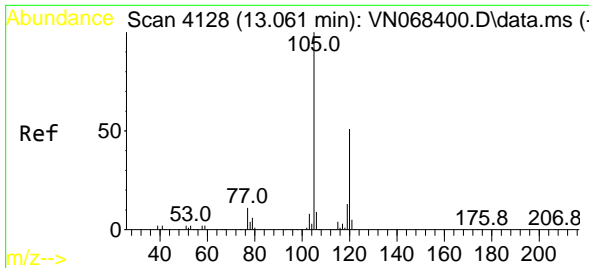


#75  
 2-Chlorotoluene  
 Concen: 20.001 ug/l  
 RT: 13.010 min Scan# 4109  
 Delta R.T. 0.000 min  
 Lab File: VN068405.D  
 Acq: 3 Sep 2021 13:50

Tgt Ion: 91 Resp: 422080  
 Ion Ratio Lower Upper  
 91 100  
 126 38.6 0.0 0.0#

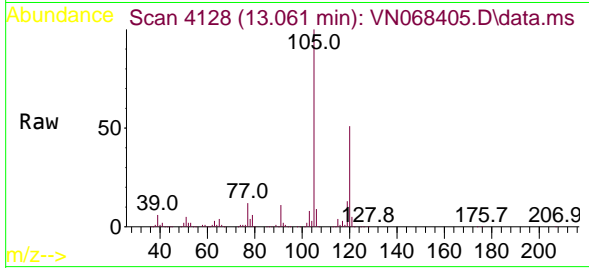




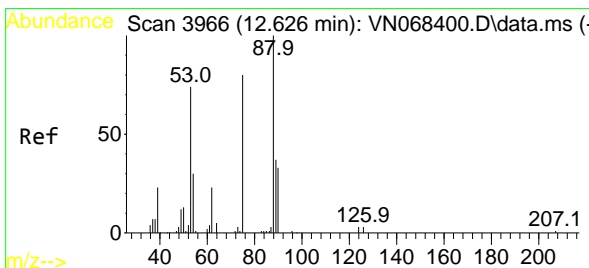
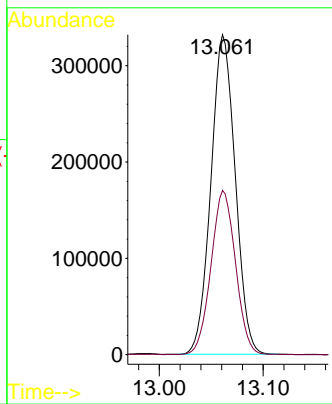
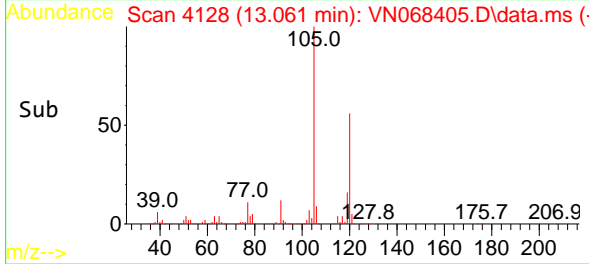


#76  
 1,3,5-Trimethylbenzene  
 Concen: 19.834 ug/l  
 RT: 13.061 min Scan# 4128  
 Delta R.T. 0.000 min  
 Lab File: VN068405.D  
 Acq: 3 Sep 2021 13:50

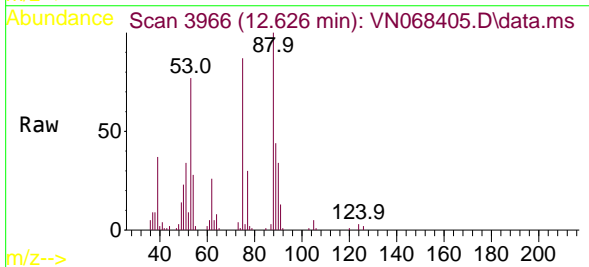
Instrument :  
 MSVOA\_N  
 ClientSampled :



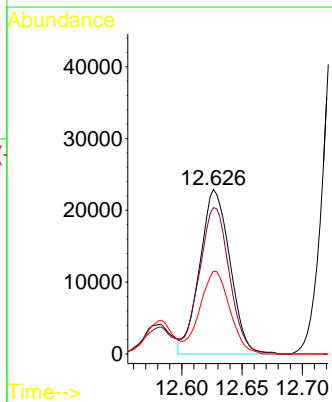
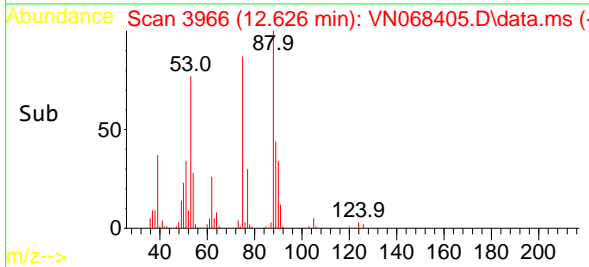
Tgt Ion:105 Resp: 540215  
 Ion Ratio Lower Upper  
 105 100  
 120 51.6 0.0 90.2

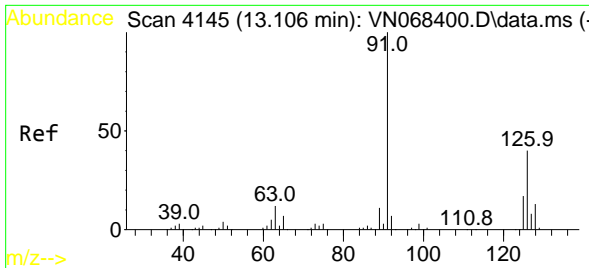


#77  
 t-1,4-Dichloro-2-butene  
 Concen: 19.066 ug/l  
 RT: 12.626 min Scan# 3966  
 Delta R.T. 0.000 min  
 Lab File: VN068405.D  
 Acq: 3 Sep 2021 13:50



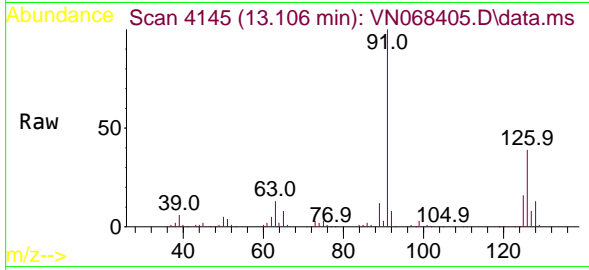
Tgt Ion: 75 Resp: 39895  
 Ion Ratio Lower Upper  
 75 100  
 53 89.0 55.2 165.6  
 89 50.3 24.5 73.5



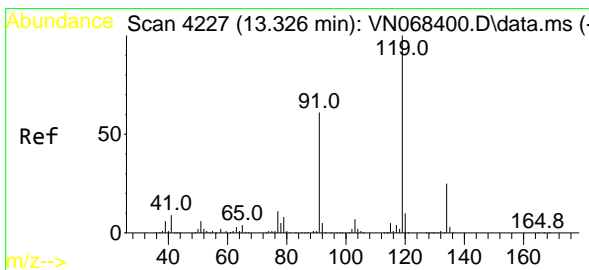
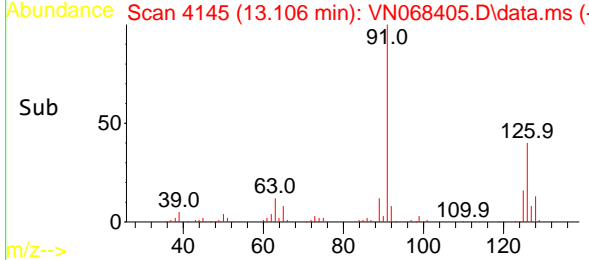
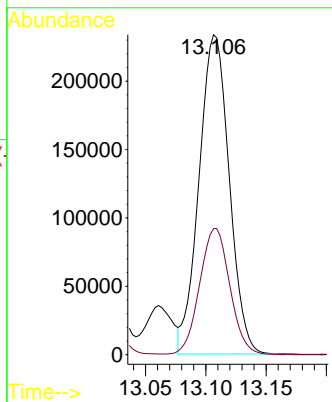


#78  
 4-Chlorotoluene  
 Concen: 19.630 ug/l  
 RT: 13.106 min Scan# 4145  
 Delta R.T. 0.000 min  
 Lab File: VN068405.D  
 Acq: 3 Sep 2021 13:50

Instrument :  
 MSVOA\_N  
 ClientSampled :

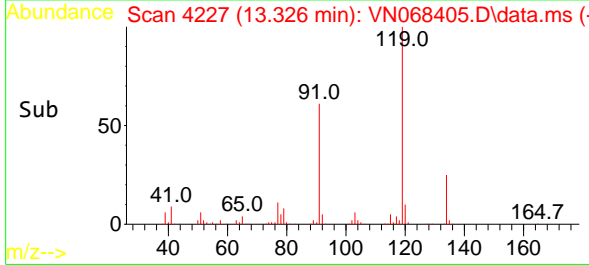
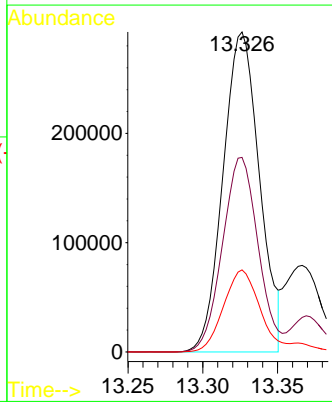
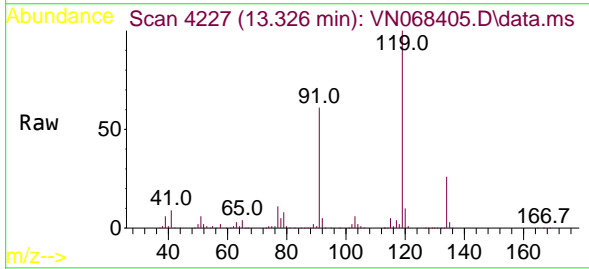


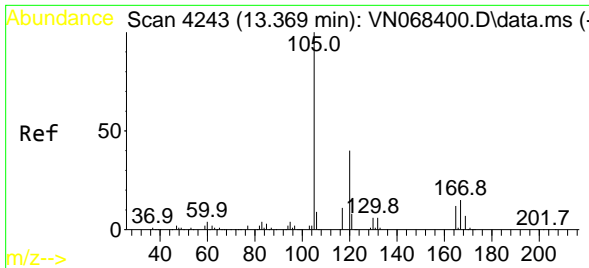
Tgt Ion: 91 Resp: 406185  
 Ion Ratio Lower Upper  
 91 100  
 126 39.7 0.0 57.6



#79  
 tert-butylbenzene  
 Concen: 19.924 ug/l  
 RT: 13.326 min Scan# 4227  
 Delta R.T. 0.000 min  
 Lab File: VN068405.D  
 Acq: 3 Sep 2021 13:50

Tgt Ion: 119 Resp: 496132  
 Ion Ratio Lower Upper  
 119 100  
 91 59.8 0.0 158.4  
 134 25.7 0.0 43.6

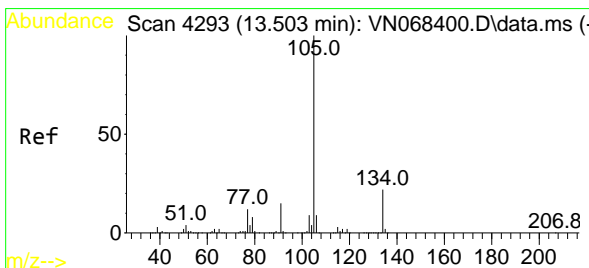
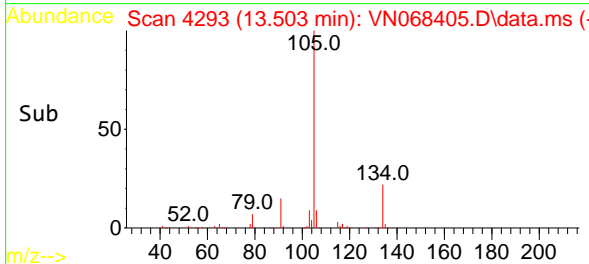
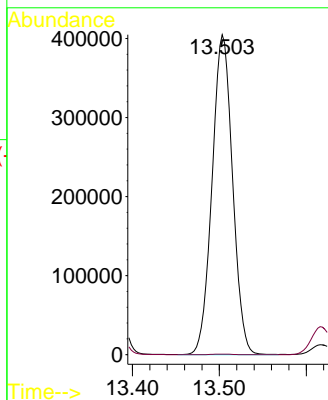
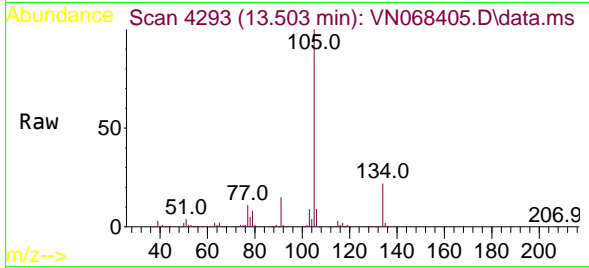




#80  
 1,2,4-Trimethylbenzene  
 Concen: 25.062 ug/l  
 RT: 13.503 min Scan# 4293  
 Delta R.T. 0.134 min  
 Lab File: VN068405.D  
 Acq: 3 Sep 2021 13:50

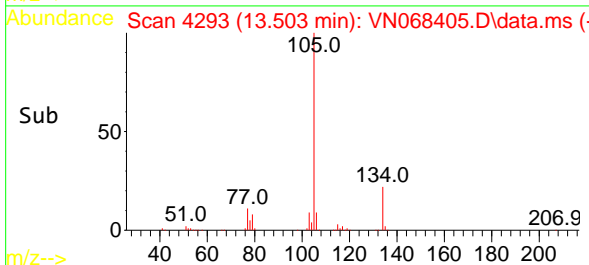
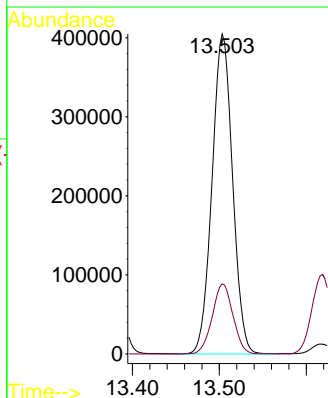
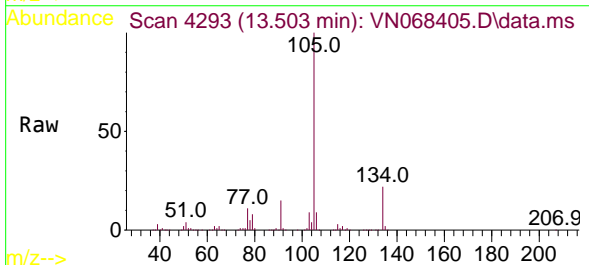
Instrument :  
 MSVOA\_N  
 ClientSampled :

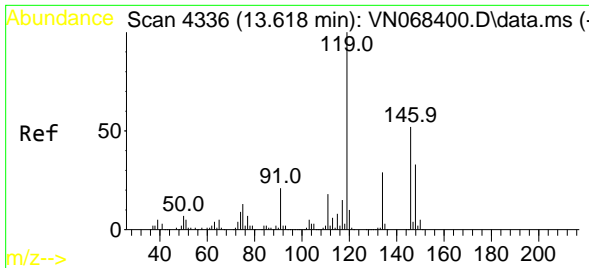
Tgt Ion:105 Resp: 663037  
 Ion Ratio Lower Upper  
 105 100  
 120 0.1 0.0 0.4



#81  
 sec-Butylbenzene  
 Concen: 19.835 ug/l  
 RT: 13.503 min Scan# 4293  
 Delta R.T. 0.000 min  
 Lab File: VN068405.D  
 Acq: 3 Sep 2021 13:50

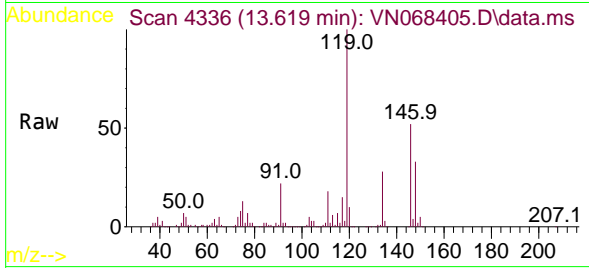
Tgt Ion:105 Resp: 663037  
 Ion Ratio Lower Upper  
 105 100  
 134 22.1 0.0 35.4



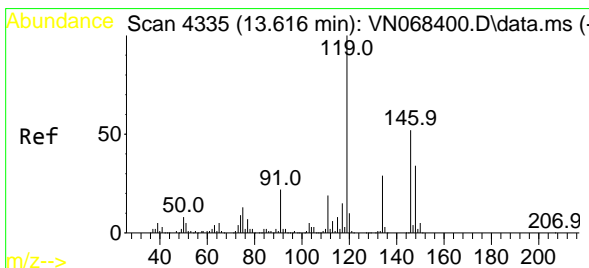
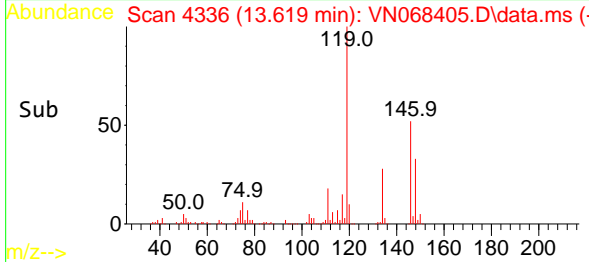
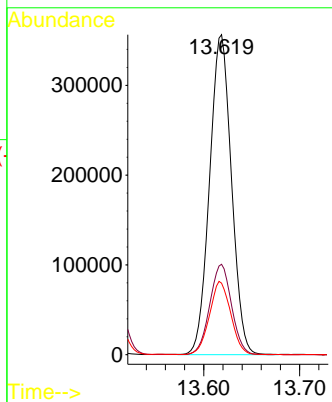


#82  
 p-Isopropyltoluene  
 Concen: 19.632 ug/l  
 RT: 13.619 min Scan# 4336  
 Delta R.T. 0.000 min  
 Lab File: VN068405.D  
 Acq: 3 Sep 2021 13:50

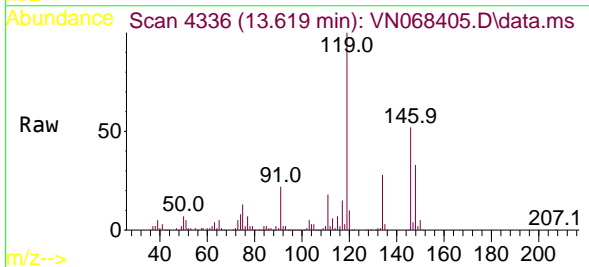
Instrument :  
 MSVOA\_N  
 ClientSampled :



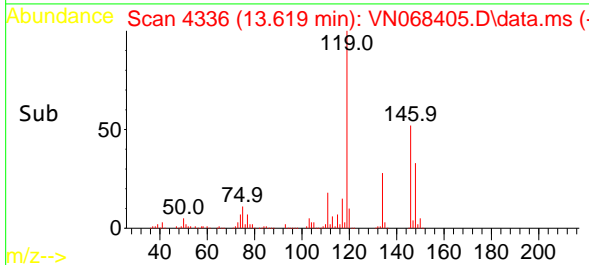
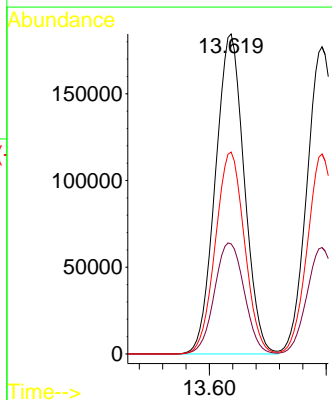
Tgt Ion:119 Resp: 564773  
 Ion Ratio Lower Upper  
 119 100  
 134 28.2 0.0 49.0  
 91 22.4 0.0 59.6

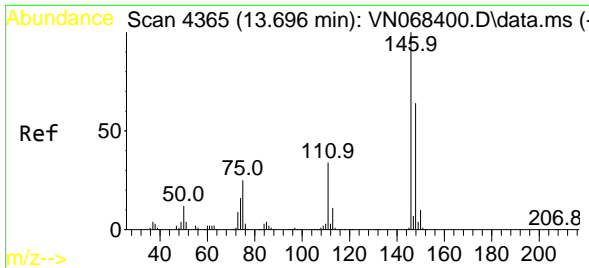


#83  
 1,3-Dichlorobenzene  
 Concen: 19.720 ug/l  
 RT: 13.619 min Scan# 4336  
 Delta R.T. 0.003 min  
 Lab File: VN068405.D  
 Acq: 3 Sep 2021 13:50



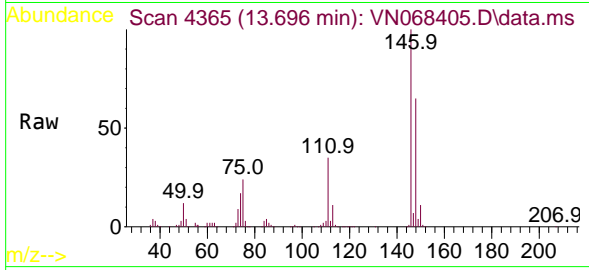
Tgt Ion:146 Resp: 317264  
 Ion Ratio Lower Upper  
 146 100  
 111 35.8 25.0 75.0  
 148 63.6 32.6 97.7



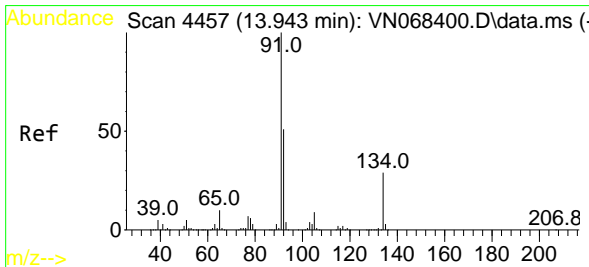
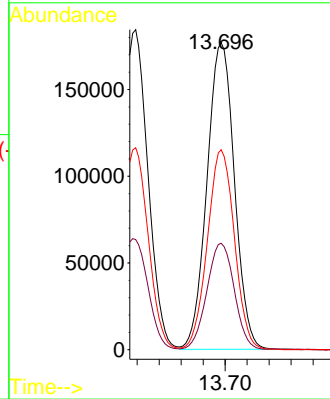
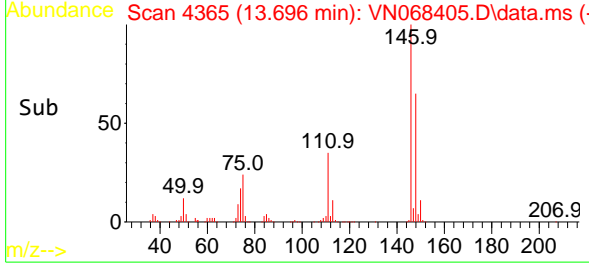


#84  
 1,4-Dichlorobenzene  
 Concen: 19.761 ug/l  
 RT: 13.696 min Scan# 4365  
 Delta R.T. 0.000 min  
 Lab File: VN068405.D  
 Acq: 3 Sep 2021 13:50

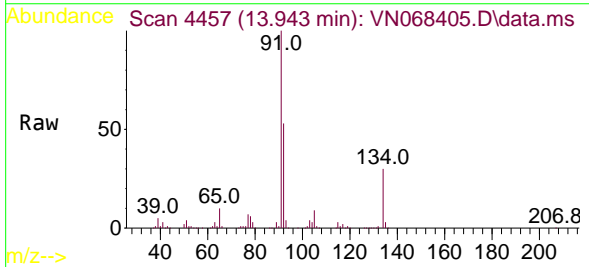
Instrument :  
 MSVOA\_N  
 ClientSampled :



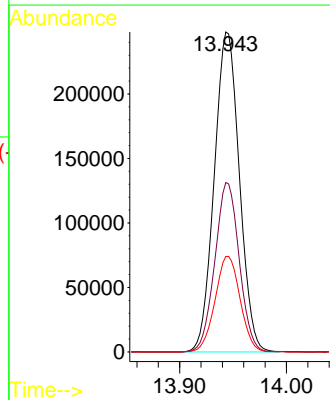
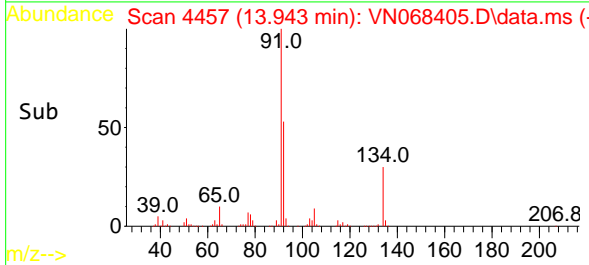
Tgt Ion:146 Resp: 306508  
 Ion Ratio Lower Upper  
 146 100  
 111 34.7 23.6 71.0  
 148 64.3 31.8 95.3

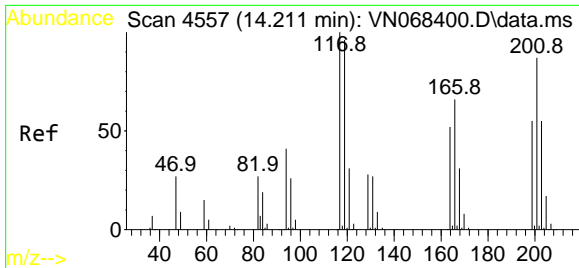


#85  
 n-Butylbenzene  
 Concen: 18.908 ug/l  
 RT: 13.943 min Scan# 4457  
 Delta R.T. 0.000 min  
 Lab File: VN068405.D  
 Acq: 3 Sep 2021 13:50



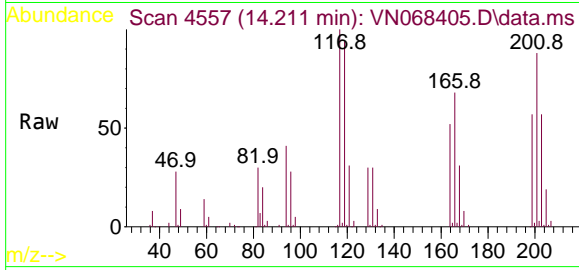
Tgt Ion: 91 Resp: 405571  
 Ion Ratio Lower Upper  
 91 100  
 92 51.4 0.0 103.0  
 134 29.8 0.0 43.6



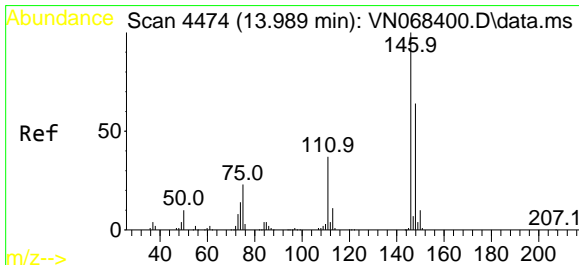
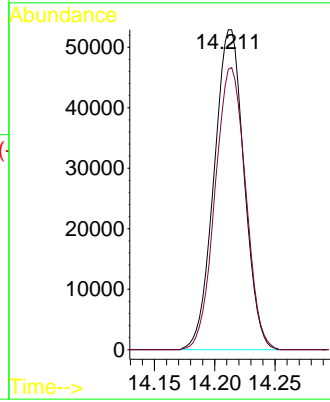
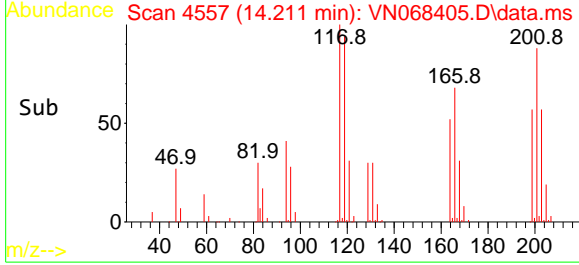


#86  
 Hexachloroethane  
 Concen: 18.827 ug/l  
 RT: 14.211 min Scan# 4557  
 Delta R.T. 0.000 min  
 Lab File: VN068405.D  
 Acq: 3 Sep 2021 13:50

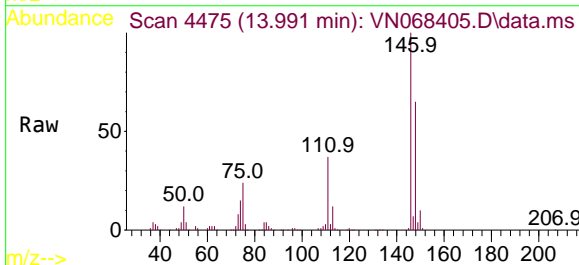
Instrument :  
 MSVOA\_N  
 ClientSampled :



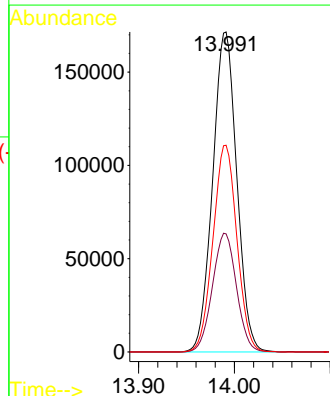
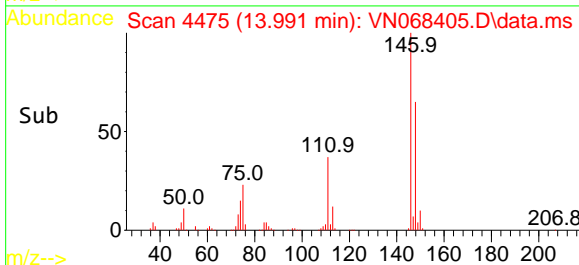
Tgt Ion:117 Resp: 91619  
 Ion Ratio Lower Upper  
 117 100  
 201 89.7 33.3 99.9

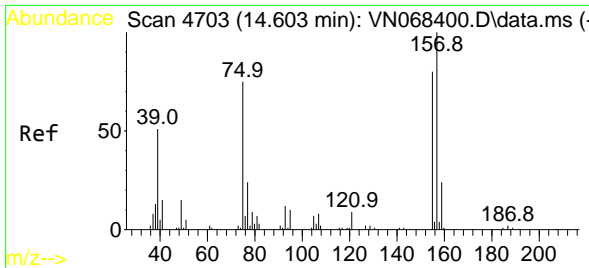


#87  
 1,2-Dichlorobenzene  
 Concen: 19.573 ug/l  
 RT: 13.991 min Scan# 4475  
 Delta R.T. 0.003 min  
 Lab File: VN068405.D  
 Acq: 3 Sep 2021 13:50



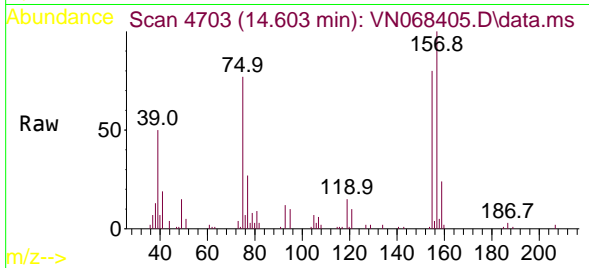
Tgt Ion:146 Resp: 299332  
 Ion Ratio Lower Upper  
 146 100  
 111 37.0 25.0 75.0  
 148 64.2 32.0 96.0



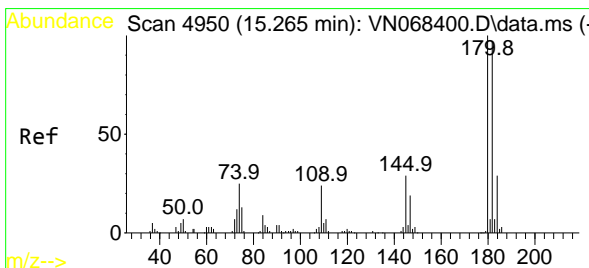
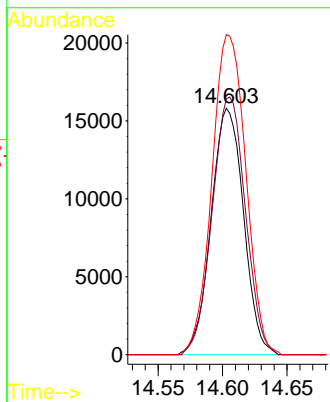
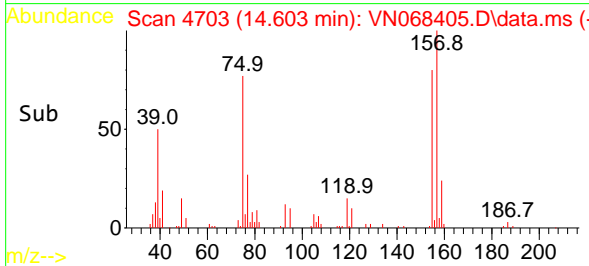


#88  
 1,2-Dibromo-3-Chloropropane  
 Concen: 19.019 ug/l  
 RT: 14.603 min Scan# 4703  
 Delta R.T. 0.000 min  
 Lab File: VN068405.D  
 Acq: 3 Sep 2021 13:50

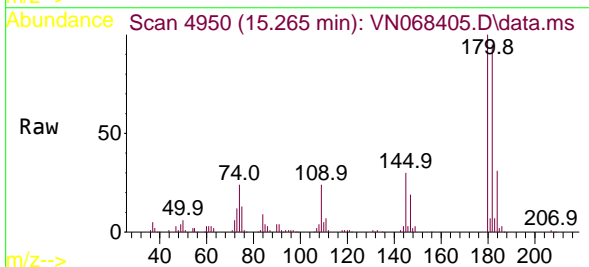
Instrument :  
 MSVOA\_N  
 ClientSampled :



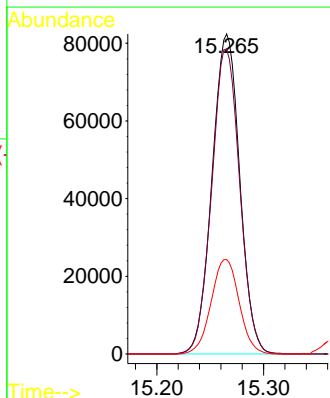
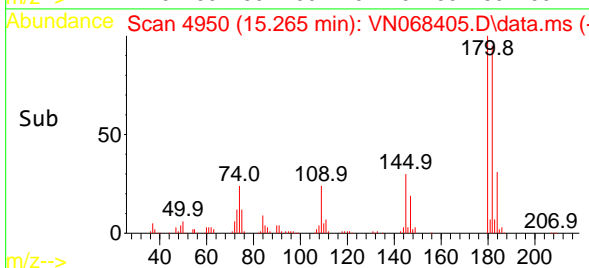
Tgt Ion: 75 Resp: 27714  
 Ion Ratio Lower Upper  
 75 100  
 155 107.1 45.3 67.9#  
 157 135.5 58.6 87.8#

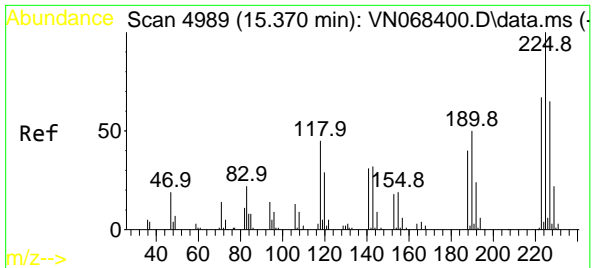


#89  
 1,2,4-Trichlorobenzene  
 Concen: 18.053 ug/l  
 RT: 15.265 min Scan# 4950  
 Delta R.T. 0.000 min  
 Lab File: VN068405.D  
 Acq: 3 Sep 2021 13:50



Tgt Ion:180 Resp: 148301  
 Ion Ratio Lower Upper  
 180 100  
 182 96.5 75.9 113.9  
 145 29.9 28.8 43.2



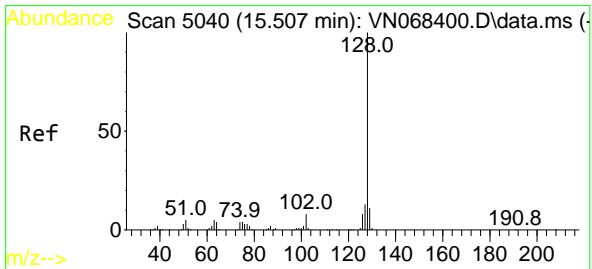
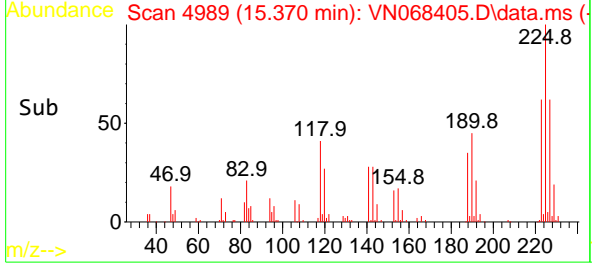
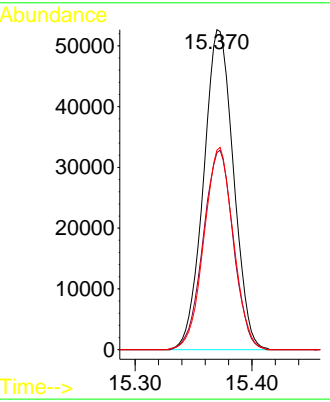
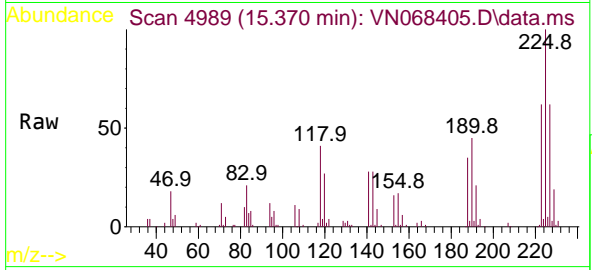


#90  
 Hexachlorobutadiene  
 Concen: 19.424 ug/l  
 RT: 15.370 min Scan# 4989  
 Delta R.T. 0.000 min  
 Lab File: VN068405.D  
 Acq: 3 Sep 2021 13:50

Instrument :  
 MSVOA\_N  
 ClientSampled :

Tgt Ion:225 Resp: 93772

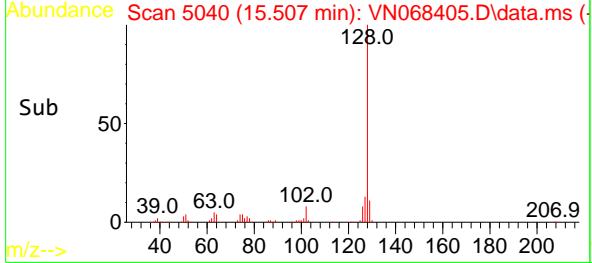
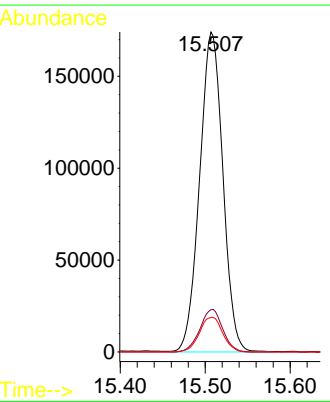
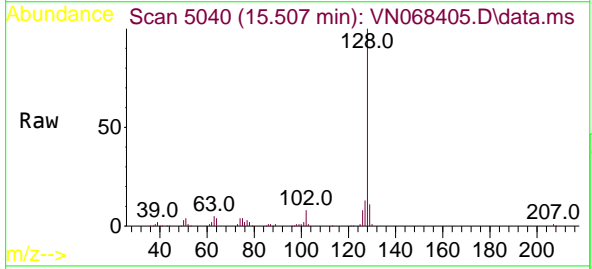
Ion	Ratio	Lower	Upper
225	100		
223	62.7	0.0	129.6
227	62.2	0.0	131.2



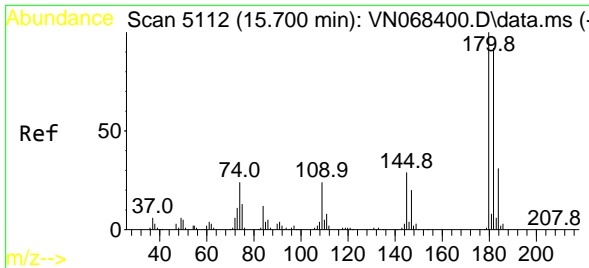
#91  
 Naphthalene  
 Concen: 19.091 ug/l  
 RT: 15.507 min Scan# 5040  
 Delta R.T. 0.000 min  
 Lab File: VN068405.D  
 Acq: 3 Sep 2021 13:50

Tgt Ion:128 Resp: 331505

Ion	Ratio	Lower	Upper
128	100		
127	13.0	10.1	15.1
129	10.9	8.9	13.3

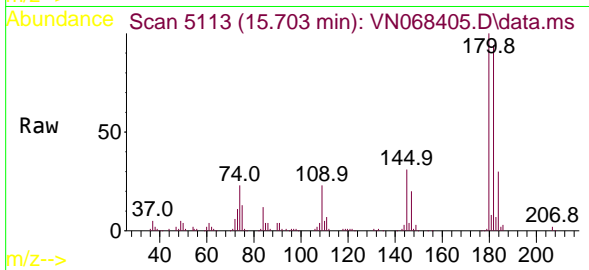






#92  
 1,2,3-Trichlorobenzene  
 Concen: 18.060 ug/l  
 RT: 15.703 min Scan# 5113  
 Delta R.T. 0.003 min  
 Lab File: VN068405.D  
 Acq: 3 Sep 2021 13:50

Instrument :  
 MSVOA\_N  
 ClientSampled :



Tgt Ion:180 Resp: 141109  
 Ion Ratio Lower Upper  
 180 100  
 182 96.7 0.0 184.6  
 145 31.2 0.0 76.0

