

Data Path : Z:\voasrv\HPCHEM1\MSVOA_N\Data\VN090322\
 Data File : VN074334.D
 Acq On : 03 Sep 2022 22:13
 Operator : JC\MD
 Sample : N4454-01DL 5X
 Misc : 5.0mL/MSVOA_N/WATER
 ALS Vial : 20 Sample Multiplier: 1

Instrument :
 MSVOA_N
 ClientSampleId :
 MW-13A-8-13-083022DL

Quant Time: Sep 05 05:41:51 2022
 Quant Method : Z:\voasrv\HPCHEM1\MSVOA_N\methods\82N090222W.M
 Quant Title : SW846 8260
 QLast Update : Sat Sep 03 04:35:33 2022
 Response via : Initial Calibration

Compound	R.T.	QIon	Response	Conc	Units	Dev(Min)

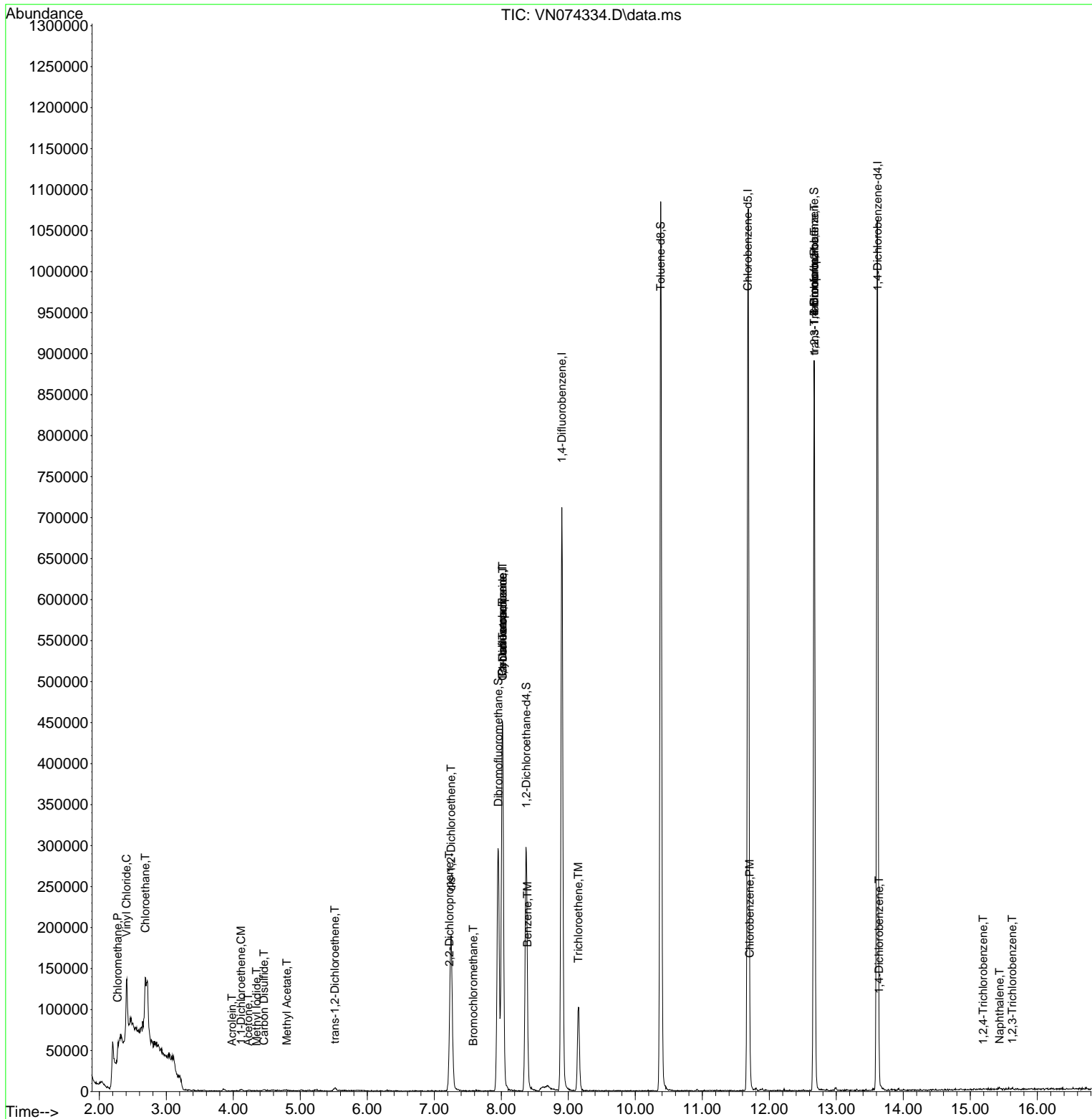
Internal Standards						
1) Pentafluorobenzene	8.016	168	333055	50.000	ug/l	0.00
34) 1,4-Difluorobenzene	8.904	114	609909	50.000	ug/l	0.00
63) Chlorobenzene-d5	11.680	117	591410	50.000	ug/l	0.00
72) 1,4-Dichlorobenzene-d4	13.615	152	270002	50.000	ug/l	0.00
System Monitoring Compounds						
33) 1,2-Dichloroethane-d4	8.375	65	238986	46.032	ug/l	0.00
Spiked Amount	50.000	Range	74 - 125	Recovery	=	92.060%
35) Dibromofluoromethane	7.957	113	208361	51.555	ug/l	0.00
Spiked Amount	50.000	Range	75 - 124	Recovery	=	103.100%
50) Toluene-d8	10.380	98	725755	45.540	ug/l	0.00
Spiked Amount	50.000	Range	86 - 113	Recovery	=	91.080%
62) 4-Bromofluorobenzene	12.668	95	261858	45.194	ug/l	0.00
Spiked Amount	50.000	Range	83 - 123	Recovery	=	90.380%
Target Compounds						
						Qvalue
3) Chloromethane	2.275	50	1678	0.369	ug/l #	70
4) Vinyl Chloride	2.404	62	59465	7.023	ug/l #	63
6) Chloroethane	2.687	64	28167	4.224	ug/l #	57
10) Methyl Iodide	4.345	142	66	5.065	ug/l #	36
12) 1,1-Dichloroethene	4.116	96	1237	0.377	ug/l #	32
13) Acrolein	3.981	56	130	0.205	ug/l #	66
16) Acetone	4.222	43	821	0.378	ug/l #	42
17) Carbon Disulfide	4.457	76	3294	0.402	ug/l #	75
18) Methyl Acetate	4.798	43	1675	0.256	ug/l	90
20) Methylene Chloride	5.016	84	509	Below Cal	#	61
21) trans-1,2-Dichloroethene	5.516	96	1700	0.452	ug/l #	73
26) 2,2-Dichloropropane	7.228	77	1447	0.239	ug/l #	1
27) cis-1,2-Dichloroethene	7.251	96	114077	23.865	ug/l	87
28) Bromochloromethane	7.580	49	59	0.272	ug/l #	8
31) Cyclohexane	8.016	56	9128	1.316	ug/l #	33
36) 1,1-Dichloropropene	8.022	75	30727	5.357	ug/l #	50
38) Carbon Tetrachloride	8.022	117	35489	6.124	ug/l #	18
40) Benzene	8.392	78	4333	0.239	ug/l #	84
44) Trichloroethene	9.151	130	38324	8.899	ug/l	93
65) Chlorobenzene	11.710	112	4659	0.359	ug/l #	81
71) Bromoform	12.668	173	2641	0.759	ug/l #	1
76) 1,2,3-Trichloropropane	12.674	75	157761	20.630	ug/l #	1
81) trans-1,4-Dichloro-2-b...	12.674	75	157761	66.972	ug/l #	10
88) 1,4-Dichlorobenzene	13.639	146	2327	0.408	ug/l #	26
93) 1,2,4-Trichlorobenzene	15.192	180	476	0.948	ug/l #	18
95) Naphthalene	15.439	128	1670	0.848	ug/l #	74
96) 1,2,3-Trichlorobenzene	15.627	180	272	0.466	ug/l #	37

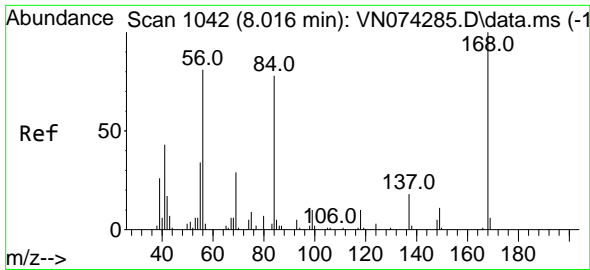
(#) = qualifier out of range (m) = manual integration (+) = signals summed

Data Path : Z:\voasrv\HPCHEM1\MSVOA_N\Data\VN090322\
 Data File : VN074334.D
 Acq On : 03 Sep 2022 22:13
 Operator : JC\MD
 Sample : N4454-01DL 5X
 Misc : 5.0mL/MSVOA_N/WATER
 ALS Vial : 20 Sample Multiplier: 1

Instrument :
 MSVOA_N
 ClientSampleId :
 MW-13A-8-13-083022DL

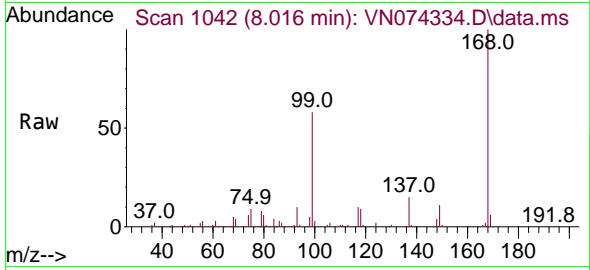
Quant Time: Sep 05 05:41:51 2022
 Quant Method : Z:\voasrv\HPCHEM1\MSVOA_N\methods\82N090222W.M
 Quant Title : SW846 8260
 QLast Update : Sat Sep 03 04:35:33 2022
 Response via : Initial Calibration



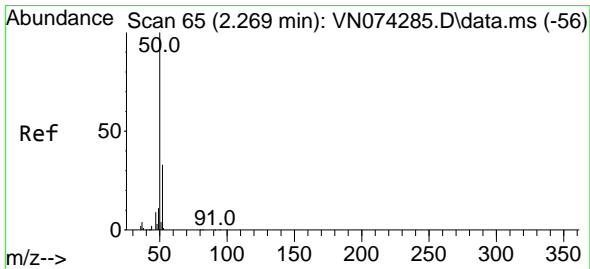
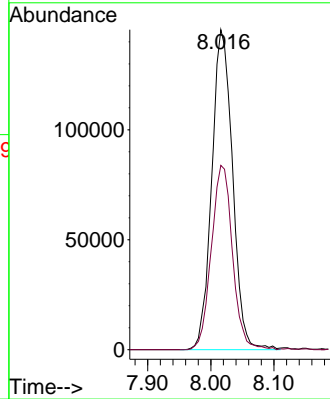
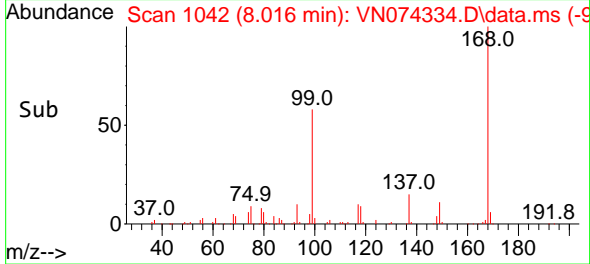


#1
 Pentafluorobenzene
 Concen: 50.000 ug/l
 RT: 8.016 min Scan# 10
 Delta R.T. -0.000 min
 Lab File: VN074334.D
 Acq: 03 Sep 2022 22:13

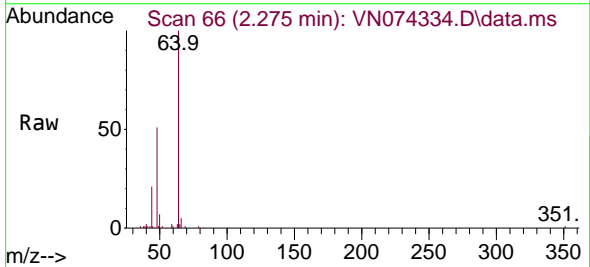
Instrument :
 MSVOA_N
 ClientSampleId :
 MW-13A-8-13-083022DL



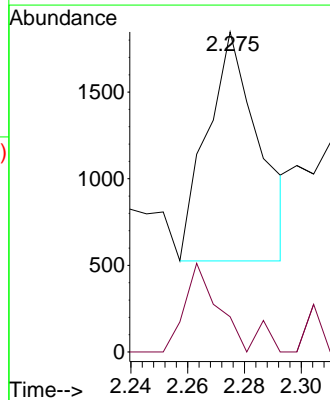
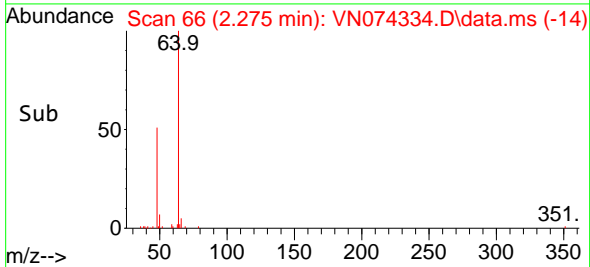
Tgt Ion:168 Resp: 333055
 Ion Ratio Lower Upper
 168 100
 99 57.6 42.3 63.5

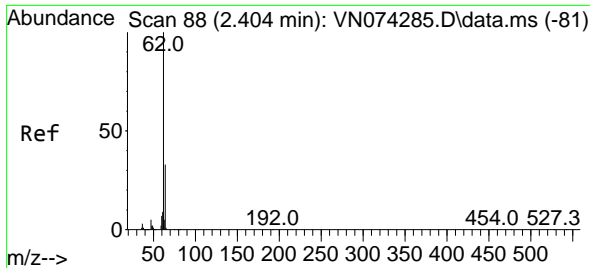


#3
 Chloromethane
 Concen: 0.369 ug/l
 RT: 2.275 min Scan# 66
 Delta R.T. 0.006 min
 Lab File: VN074334.D
 Acq: 03 Sep 2022 22:13



Tgt Ion: 50 Resp: 1678
 Ion Ratio Lower Upper
 50 100
 52 15.4 25.7 38.5#

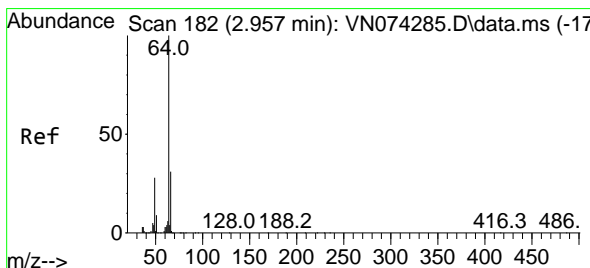
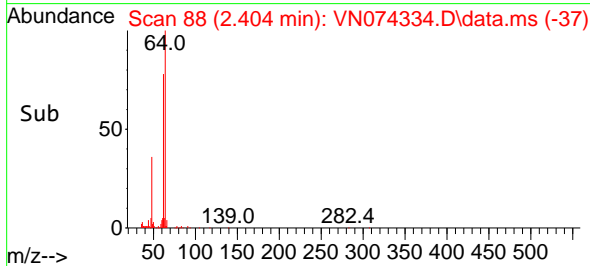
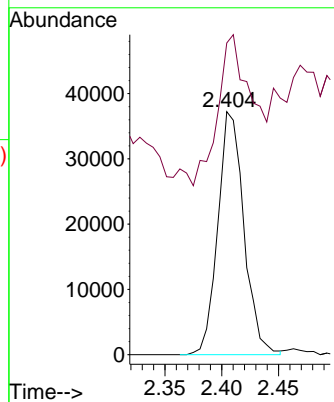
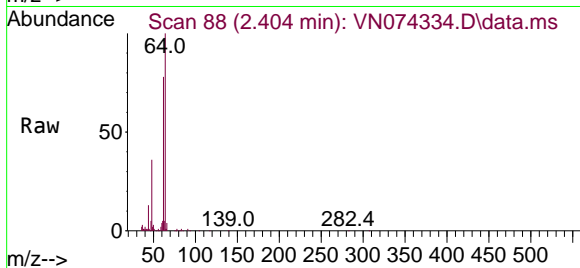




#4
 Vinyl Chloride
 Concen: 7.023 ug/l
 RT: 2.404 min Scan# 81
 Delta R.T. 0.000 min
 Lab File: VN074334.D
 Acq: 03 Sep 2022 22:13

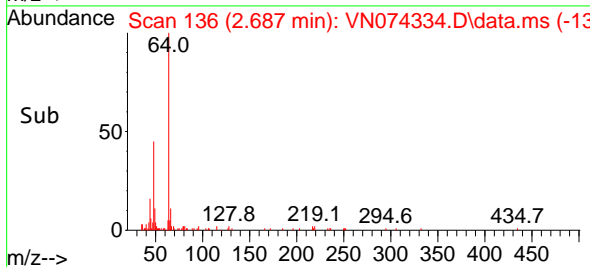
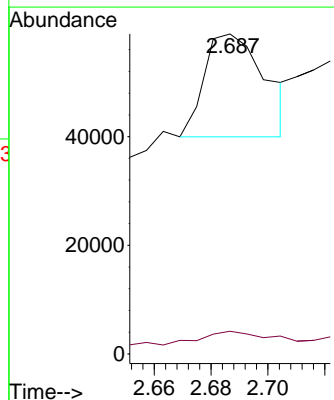
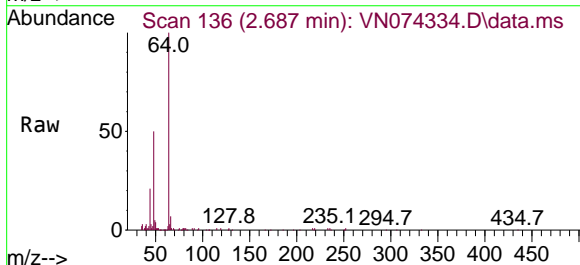
Instrument : MSVOA_N
 ClientSampleId : MW-13A-8-13-083022DL

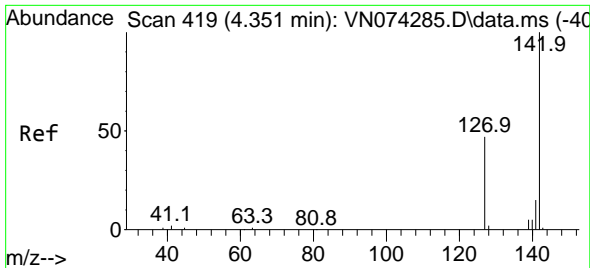
Tgt Ion: 62 Resp: 59465
 Ion Ratio Lower Upper
 62 100
 64 51.8 25.0 37.4#



#6
 Chloroethane
 Concen: 4.224 ug/l
 RT: 2.687 min Scan# 136
 Delta R.T. -0.264 min
 Lab File: VN074334.D
 Acq: 03 Sep 2022 22:13

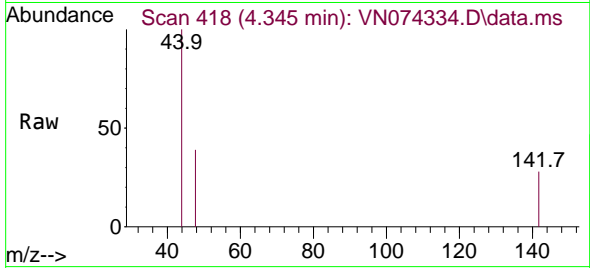
Tgt Ion: 64 Resp: 28167
 Ion Ratio Lower Upper
 64 100
 66 8.8 26.2 39.4#



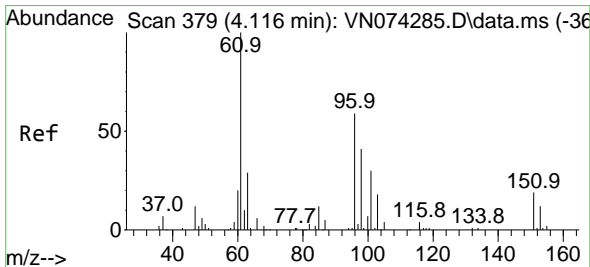
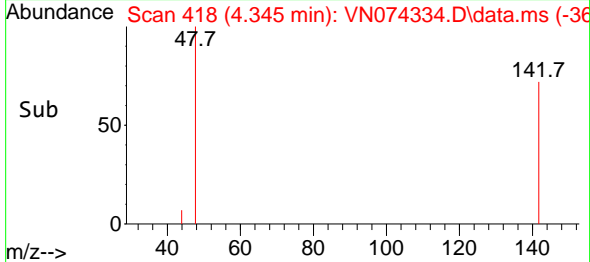
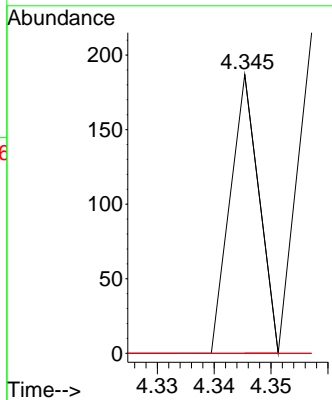


#10
Methyl Iodide
Concen: 5.065 ug/l
RT: 4.345 min Scan# 418
Delta R.T. -0.001 min
Lab File: VN074334.D
Acq: 03 Sep 2022 22:13

Instrument : MSVOA_N
ClientSampleId : MW-13A-8-13-083022DL

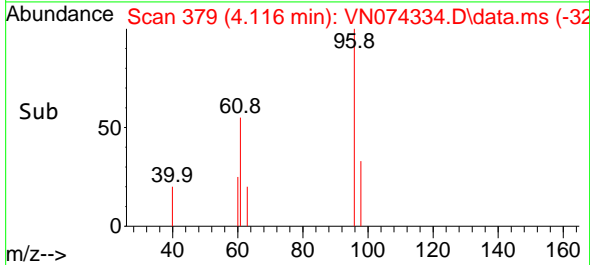
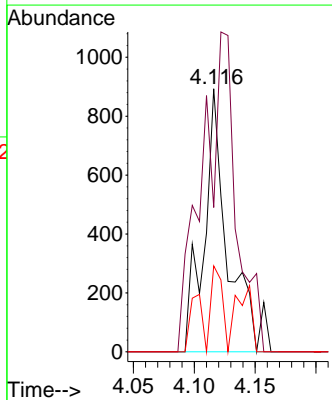
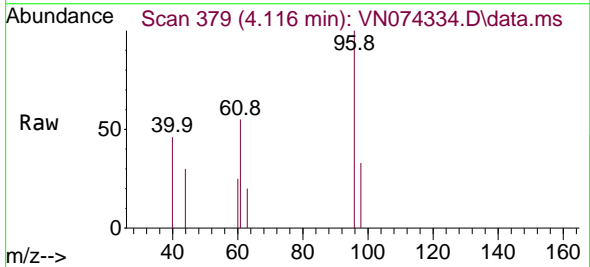


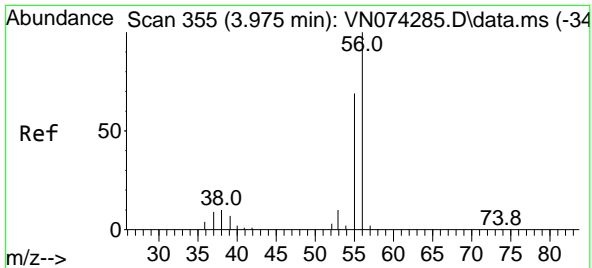
Tgt Ion:142 Resp: 66
Ion Ratio Lower Upper
142 100
127 84.8 31.3 46.9#
141 0.0 11.2 16.8#



#12
1,1-Dichloroethene
Concen: 0.377 ug/l
RT: 4.116 min Scan# 379
Delta R.T. 0.006 min
Lab File: VN074334.D
Acq: 03 Sep 2022 22:13

Tgt Ion: 96 Resp: 1237
Ion Ratio Lower Upper
96 100
61 54.9 127.6 191.4#
98 32.7 51.2 76.8#

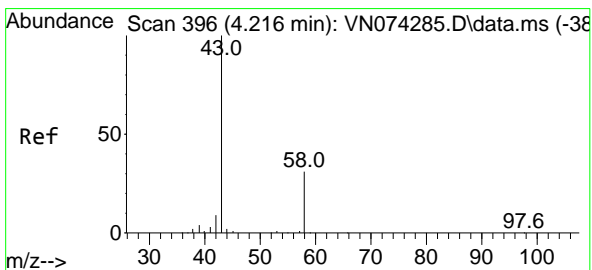
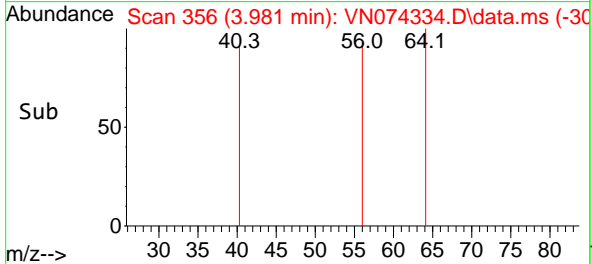
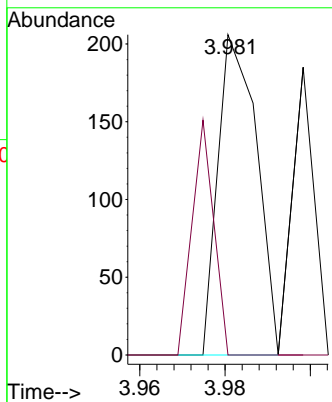
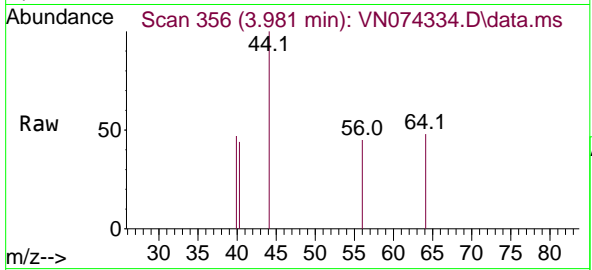




#13
 Acrolein
 Concen: 0.205 ug/l
 RT: 3.981 min Scan# 311
 Delta R.T. 0.006 min
 Lab File: VN074334.D
 Acq: 03 Sep 2022 22:13

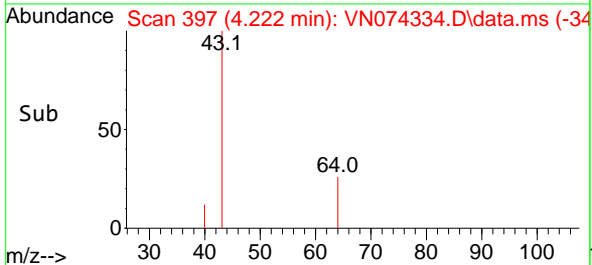
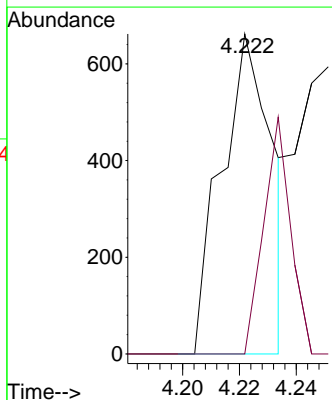
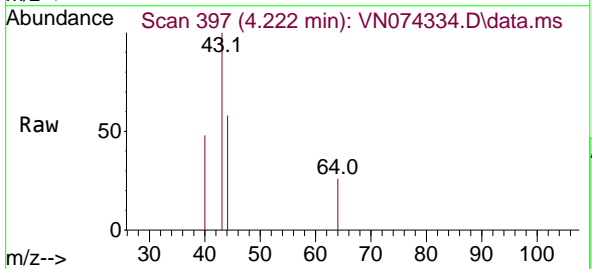
Instrument : MSVOA_N
 ClientSampleId : MW-13A-8-13-083022DL

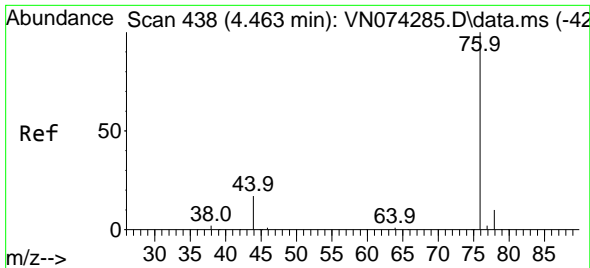
Tgt Ion: 56 Resp: 130
 Ion Ratio Lower Upper
 56 100
 55 40.8 54.8 82.2#



#16
 Acetone
 Concen: 0.378 ug/l
 RT: 4.222 min Scan# 397
 Delta R.T. -0.000 min
 Lab File: VN074334.D
 Acq: 03 Sep 2022 22:13

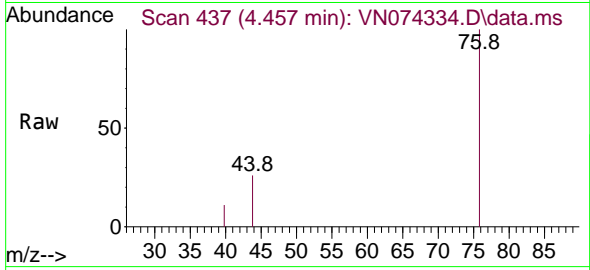
Tgt Ion: 43 Resp: 821
 Ion Ratio Lower Upper
 43 100
 58 0.0 26.0 39.0#



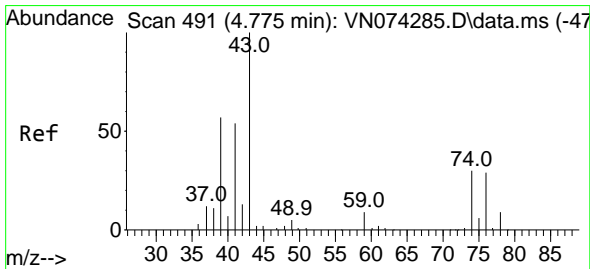
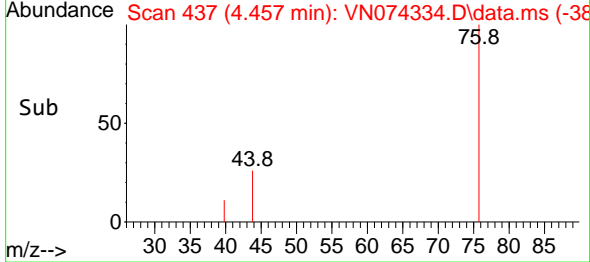
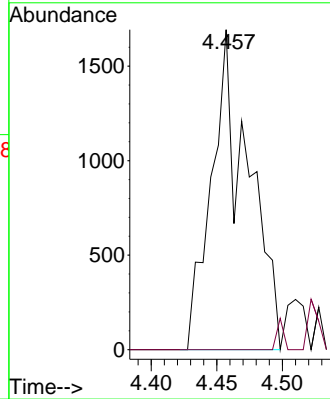


#17
 Carbon Disulfide
 Concen: 0.402 ug/l
 RT: 4.457 min Scan# 41
 Delta R.T. 0.006 min
 Lab File: VN074334.D
 Acq: 03 Sep 2022 22:13

Instrument : MSVOA_N
 ClientSampleId : MW-13A-8-13-083022DL

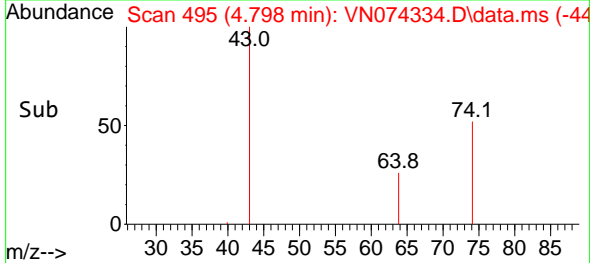
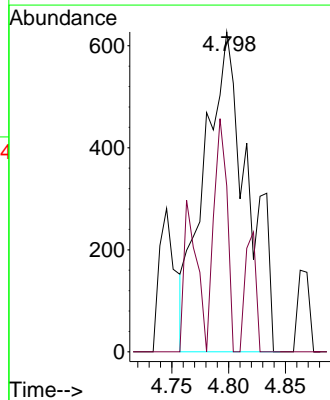
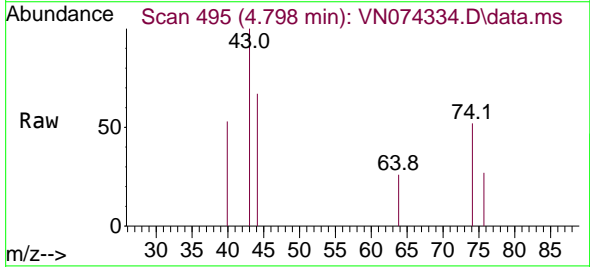


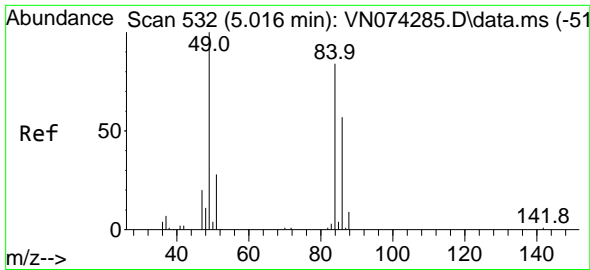
Tgt Ion: 76 Resp: 3294
 Ion Ratio Lower Upper
 76 100
 78 0.0 7.2 10.8#



#18
 Methyl Acetate
 Concen: 0.256 ug/l
 RT: 4.798 min Scan# 495
 Delta R.T. 0.023 min
 Lab File: VN074334.D
 Acq: 03 Sep 2022 22:13

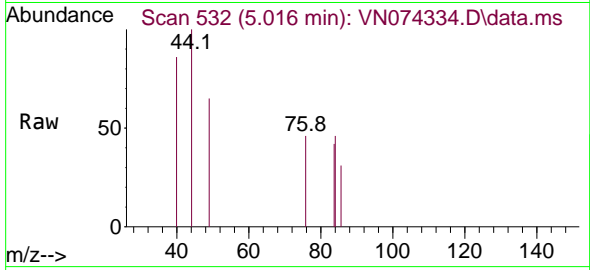
Tgt Ion: 43 Resp: 1675
 Ion Ratio Lower Upper
 43 100
 74 22.0 21.6 32.4





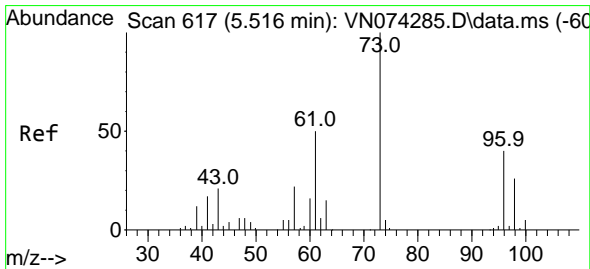
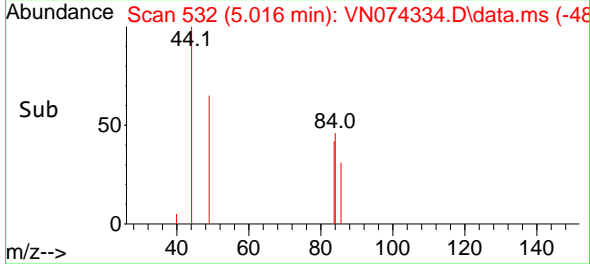
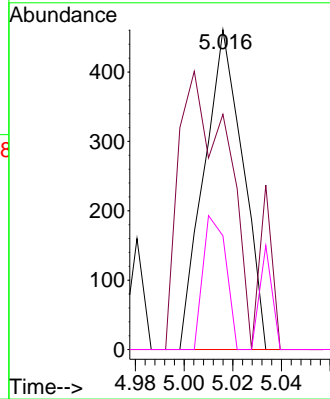
#20
 Methylene Chloride
 Concen: Below Cal
 RT: 5.016 min Scan# 51
 Delta R.T. 0.006 min
 Lab File: VN074334.D
 Acq: 03 Sep 2022 22:13

Instrument : MSVOA_N
 ClientSampleId : MW-13A-8-13-083022DL



Tgt Ion: 84 Resp: 509

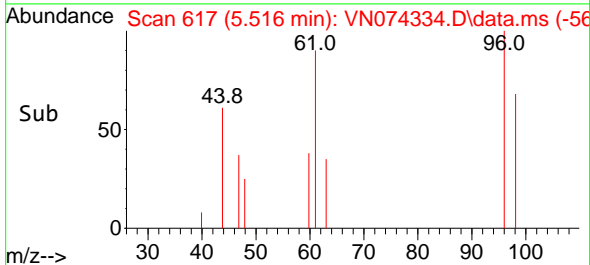
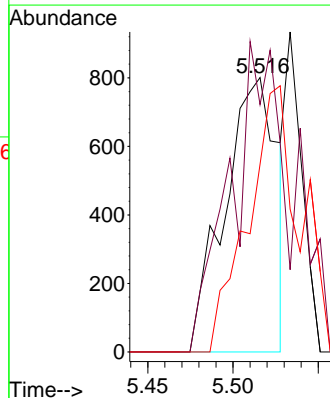
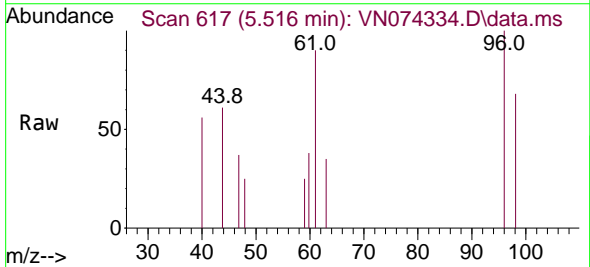
Ion	Ratio	Lower	Upper
84	100		
49	73.5	88.3	132.5#
51	0.0	28.2	42.2#
86	35.6	50.6	76.0#

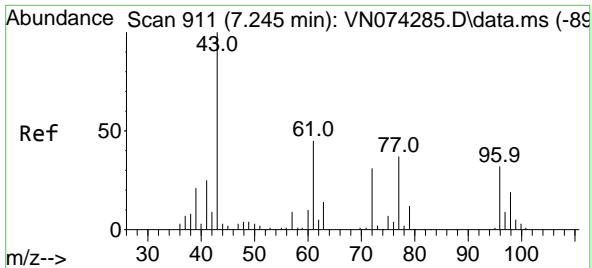


#21
 trans-1,2-Dichloroethene
 Concen: 0.452 ug/l
 RT: 5.516 min Scan# 617
 Delta R.T. -0.000 min
 Lab File: VN074334.D
 Acq: 03 Sep 2022 22:13

Tgt Ion: 96 Resp: 1700

Ion	Ratio	Lower	Upper
96	100		
61	90.1	105.8	158.8#
98	68.4	50.3	75.5

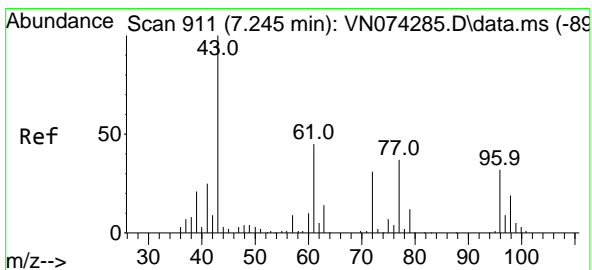
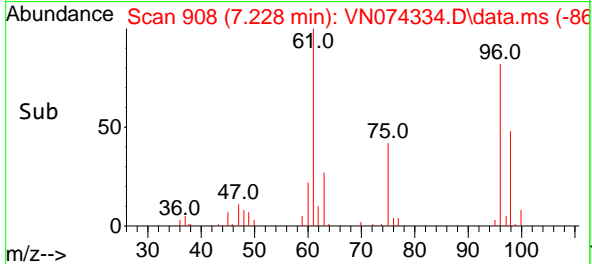
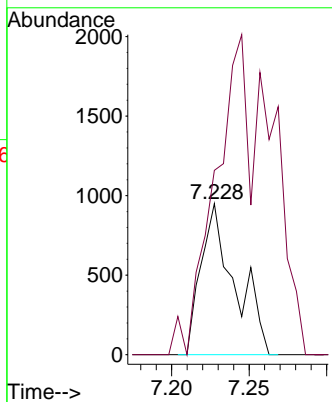
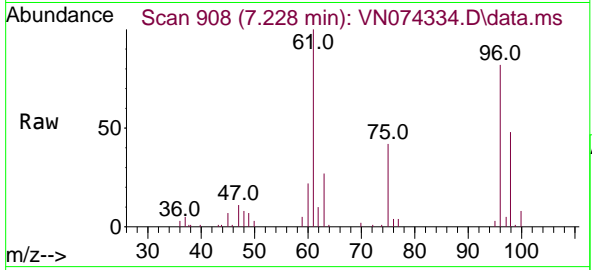




#26
 2,2-Dichloropropane
 Concen: 0.239 ug/l
 RT: 7.228 min Scan# 908
 Delta R.T. -0.017 min
 Lab File: VN074334.D
 Acq: 03 Sep 2022 22:13

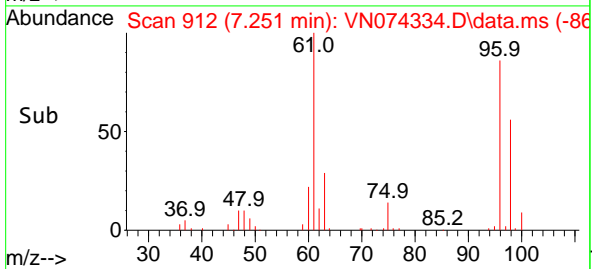
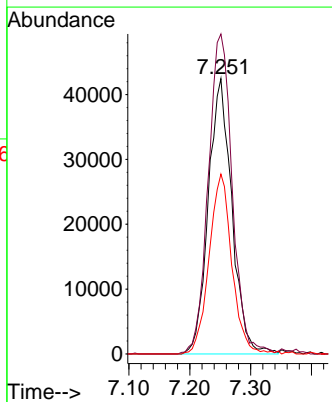
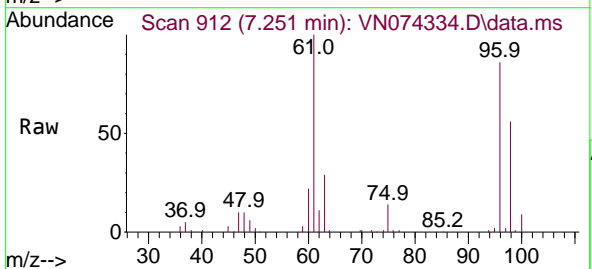
Instrument : MSVOA_N
 ClientSampleId : MW-13A-8-13-083022DL

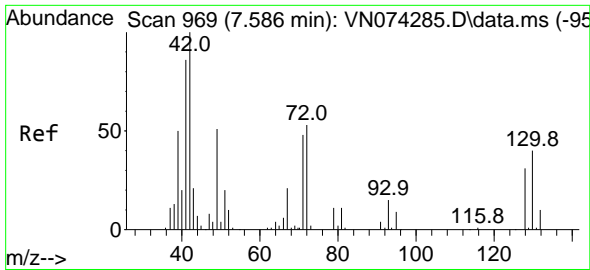
Tgt Ion: 77 Resp: 1447
 Ion Ratio Lower Upper
 77 100
 97 210.8 11.4 34.2#



#27
 cis-1,2-Dichloroethene
 Concen: 23.865 ug/l
 RT: 7.251 min Scan# 912
 Delta R.T. 0.006 min
 Lab File: VN074334.D
 Acq: 03 Sep 2022 22:13

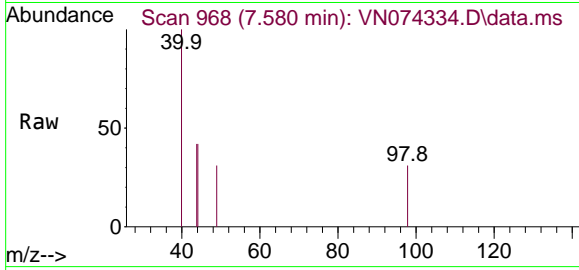
Tgt Ion: 96 Resp: 114077
 Ion Ratio Lower Upper
 96 100
 61 118.3 0.0 280.6
 98 63.2 0.0 128.4



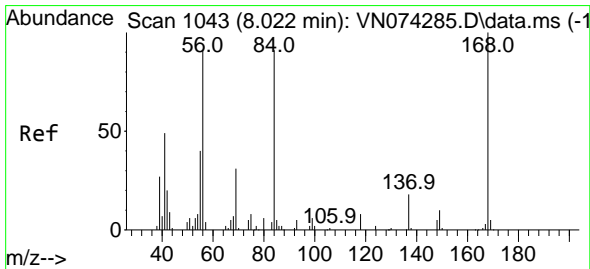
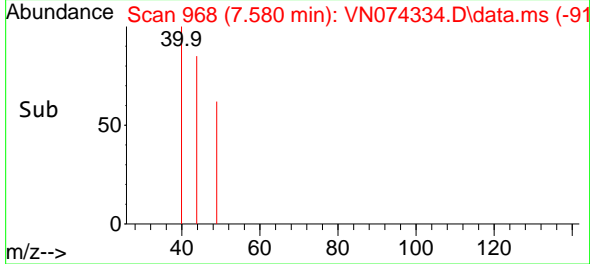
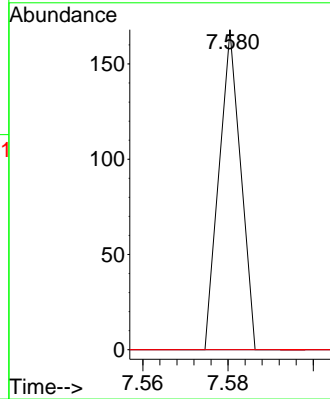


#28
 Bromochloromethane
 Concen: 0.272 ug/l
 RT: 7.580 min Scan# 90
 Delta R.T. -0.006 min
 Lab File: VN074334.D
 Acq: 03 Sep 2022 22:13

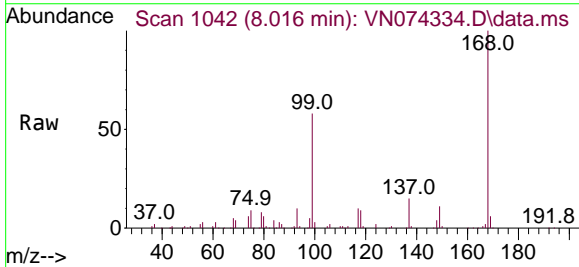
Instrument : MSVOA_N
 ClientSampleId : MW-13A-8-13-083022DL



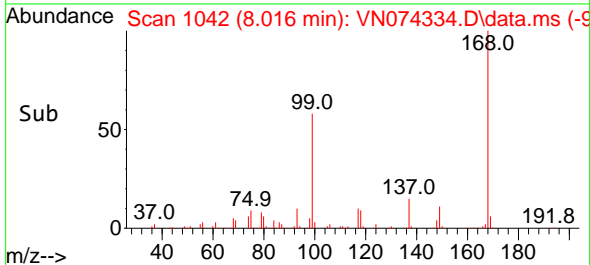
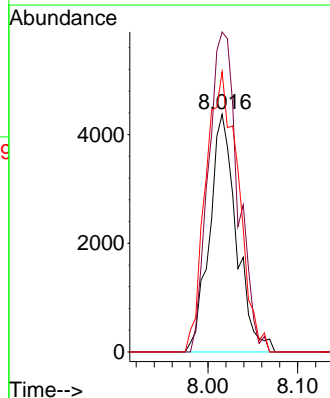
Tgt Ion	Resp	Lower	Upper
49	100		
129	0.0	0.0	4.6
130	0.0	69.7	104.5#

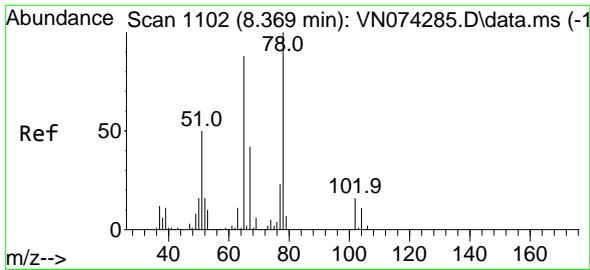


#31
 Cyclohexane
 Concen: 1.316 ug/l
 RT: 8.016 min Scan# 1042
 Delta R.T. -0.006 min
 Lab File: VN074334.D
 Acq: 03 Sep 2022 22:13



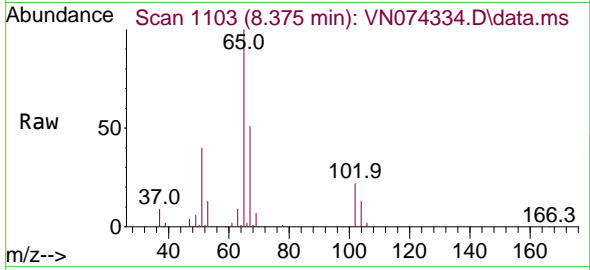
Tgt Ion	Resp	Lower	Upper
56	100		
69	134.6	27.8	41.8#
84	124.5	76.9	115.3#



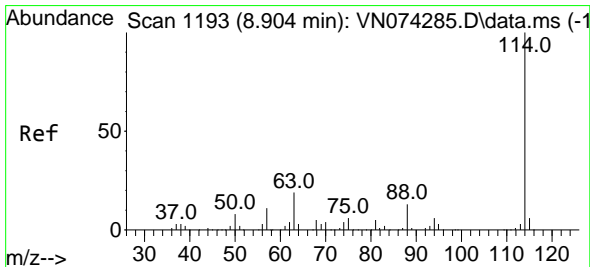
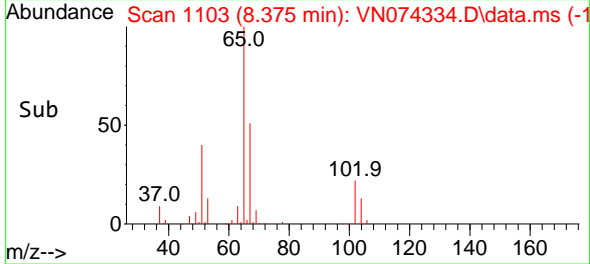
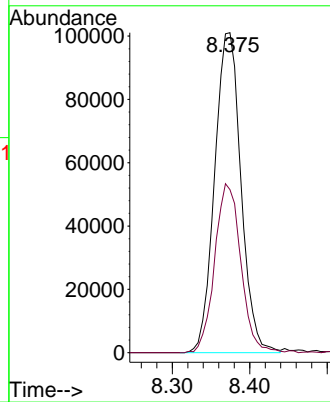


#33
 1,2-Dichloroethane-d4
 Concen: 46.032 ug/l
 RT: 8.375 min Scan# 1103
 Delta R.T. 0.006 min
 Lab File: VN074334.D
 Acq: 03 Sep 2022 22:13

Instrument : MSVOA_N
 ClientSampleId : MW-13A-8-13-083022DL

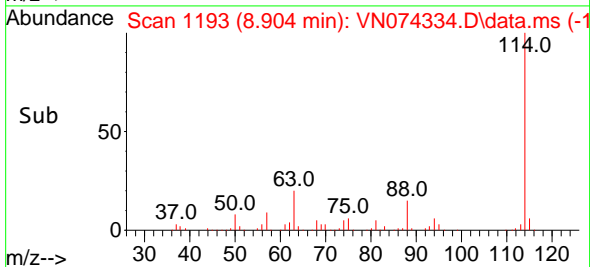
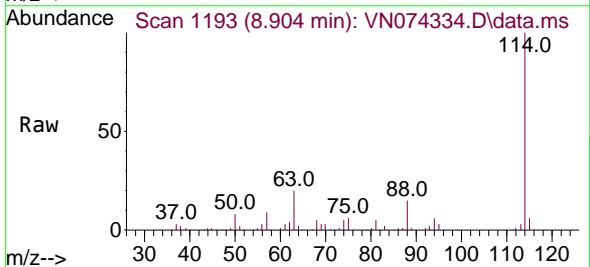
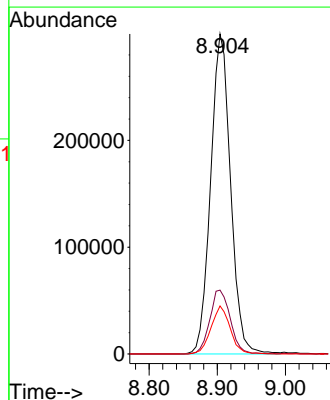


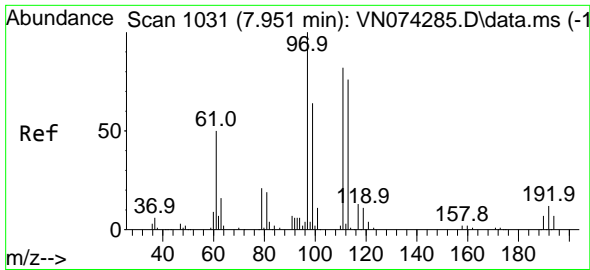
Tgt Ion: 65 Resp: 238986
 Ion Ratio Lower Upper
 65 100
 67 52.3 0.0 104.8



#34
 1,4-Difluorobenzene
 Concen: 50.000 ug/l
 RT: 8.904 min Scan# 1193
 Delta R.T. -0.000 min
 Lab File: VN074334.D
 Acq: 03 Sep 2022 22:13

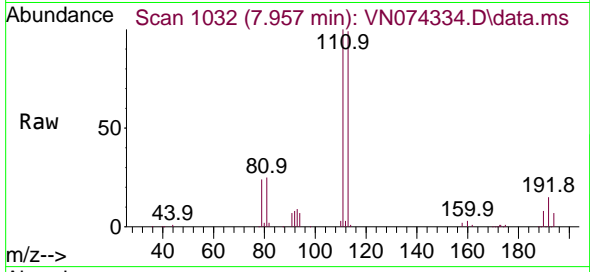
Tgt Ion: 114 Resp: 609909
 Ion Ratio Lower Upper
 114 100
 63 20.0 0.0 40.0
 88 15.0 0.0 32.6



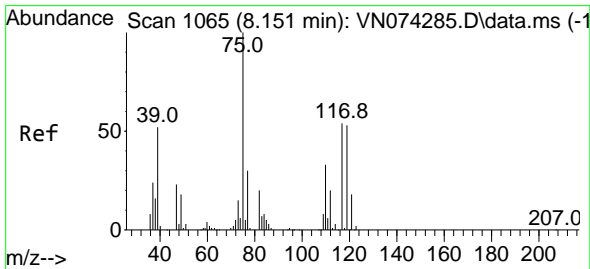
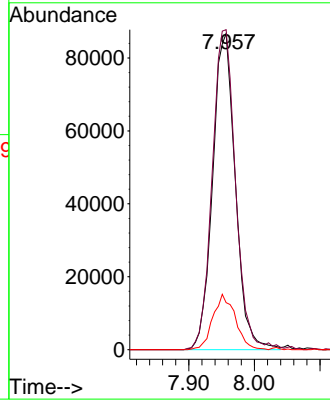
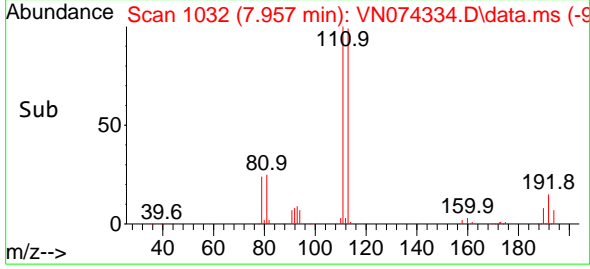


#35
 Dibromofluoromethane
 Concen: 51.555 ug/l
 RT: 7.957 min Scan# 1043
 Delta R.T. 0.006 min
 Lab File: VN074334.D
 Acq: 03 Sep 2022 22:13

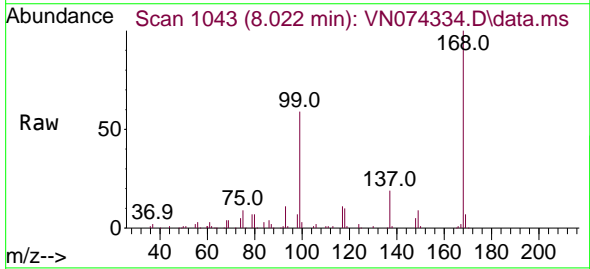
Instrument :
 MSVOA_N
 ClientSampleId :
 MW-13A-8-13-083022DL



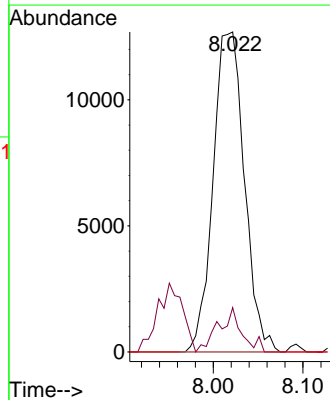
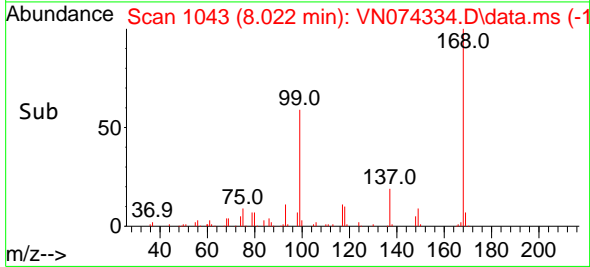
Tgt Ion:113 Resp: 208361
 Ion Ratio Lower Upper
 113 100
 111 104.1 81.4 122.0
 192 17.4 17.0 25.6

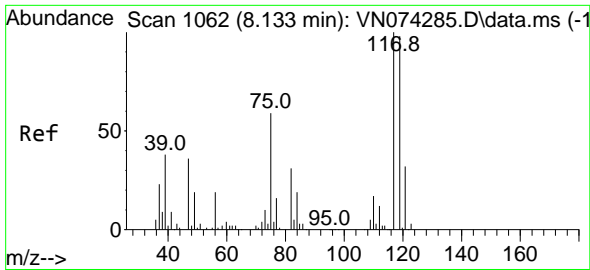


#36
 1,1-Dichloropropene
 Concen: 5.357 ug/l
 RT: 8.022 min Scan# 1043
 Delta R.T. -0.135 min
 Lab File: VN074334.D
 Acq: 03 Sep 2022 22:13



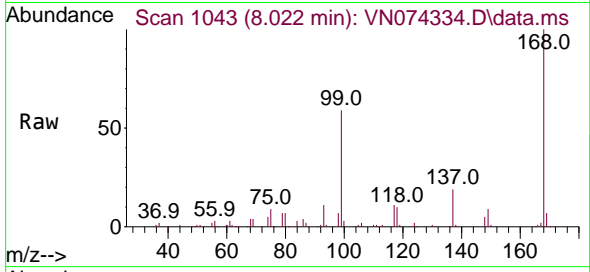
Tgt Ion: 75 Resp: 30727
 Ion Ratio Lower Upper
 75 100
 110 10.3 18.3 54.8#
 77 0.0 25.1 37.7#



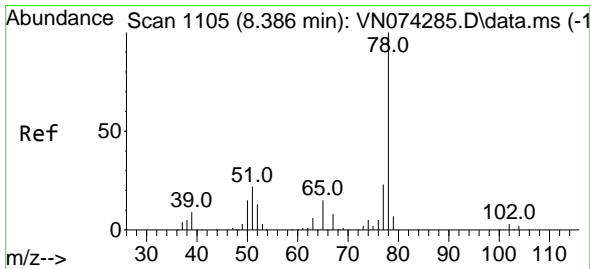
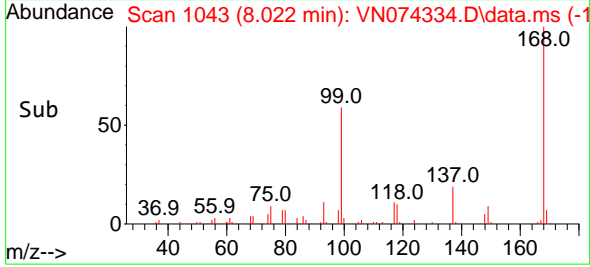
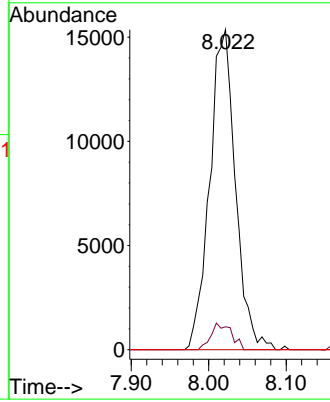


#38
 Carbon Tetrachloride
 Concen: 6.124 ug/l
 RT: 8.022 min Scan# 1106
 Delta R.T. -0.111 min
 Lab File: VN074334.D
 Acq: 03 Sep 2022 22:13

Instrument : MSVOA_N
 ClientSampleId : MW-13A-8-13-083022DL

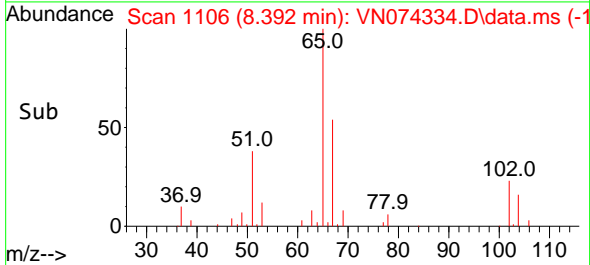
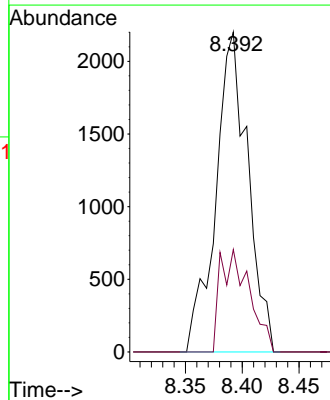
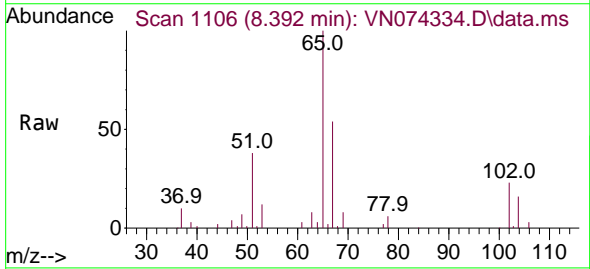


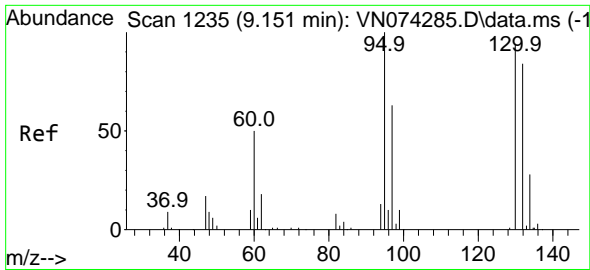
Tgt Ion:117 Resp: 35489
 Ion Ratio Lower Upper
 117 100
 119 7.2 75.8 113.8#
 121 0.0 24.6 37.0#



#40
 Benzene
 Concen: 0.239 ug/l
 RT: 8.392 min Scan# 1106
 Delta R.T. 0.000 min
 Lab File: VN074334.D
 Acq: 03 Sep 2022 22:13

Tgt Ion: 78 Resp: 4333
 Ion Ratio Lower Upper
 78 100
 77 32.0 19.4 29.0#

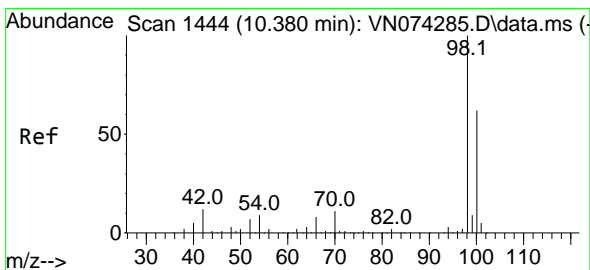
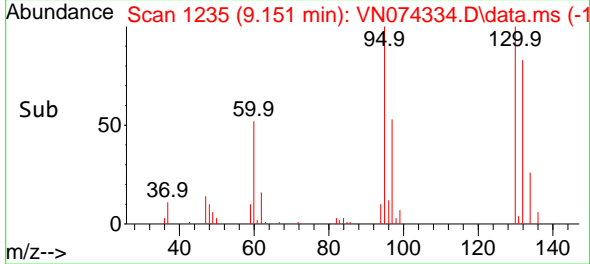
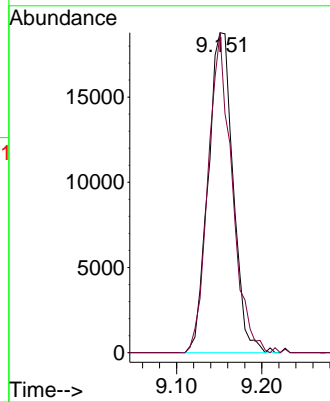
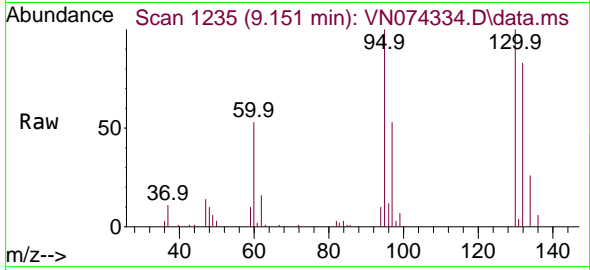




#44
 Trichloroethene
 Concen: 8.899 ug/l
 RT: 9.151 min Scan# 11
 Delta R.T. -0.000 min
 Lab File: VN074334.D
 Acq: 03 Sep 2022 22:13

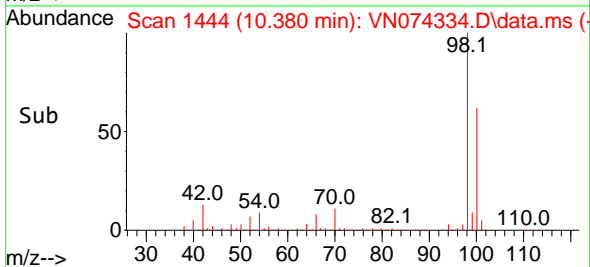
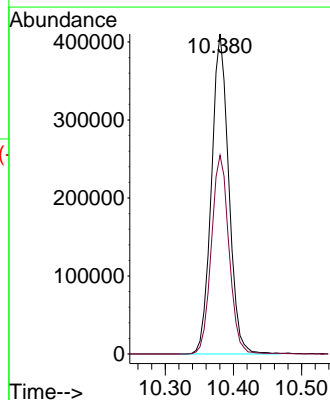
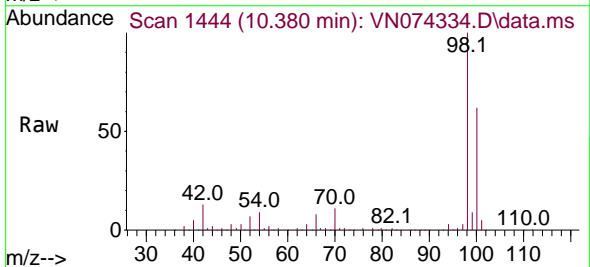
Instrument : MSVOA_N
 ClientSampleId : MW-13A-8-13-083022DL

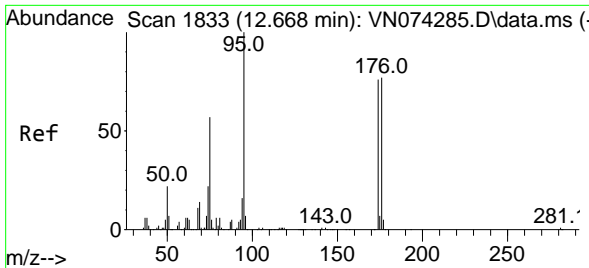
Tgt Ion:130 Resp: 38324
 Ion Ratio Lower Upper
 130 100
 95 99.8 0.0 186.8



#50
 Toluene-d8
 Concen: 45.540 ug/l
 RT: 10.380 min Scan# 1444
 Delta R.T. 0.000 min
 Lab File: VN074334.D
 Acq: 03 Sep 2022 22:13

Tgt Ion: 98 Resp: 725755
 Ion Ratio Lower Upper
 98 100
 100 63.0 52.6 78.8



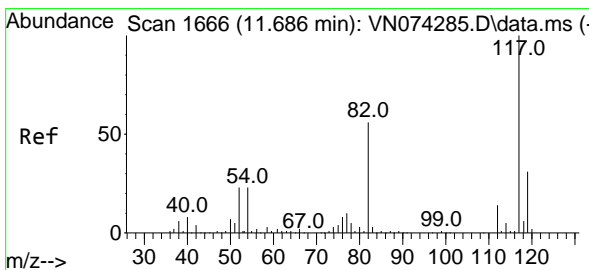
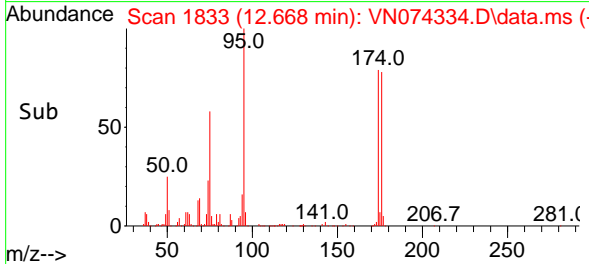
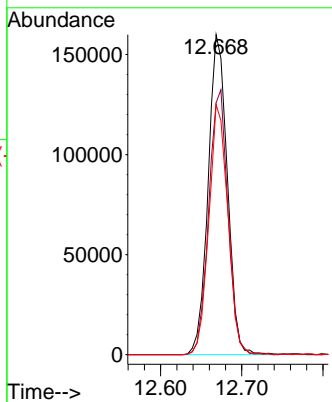
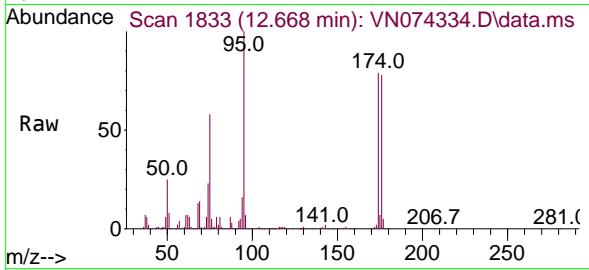


#62
 4-Bromofluorobenzene
 Concen: 45.194 ug/l
 RT: 12.668 min Scan# 1833
 Delta R.T. -0.001 min
 Lab File: VN074334.D
 Acq: 03 Sep 2022 22:13

Instrument : MSVOA_N
 ClientSampleId : MW-13A-8-13-083022DL

Tgt Ion: 95 Resp: 261858

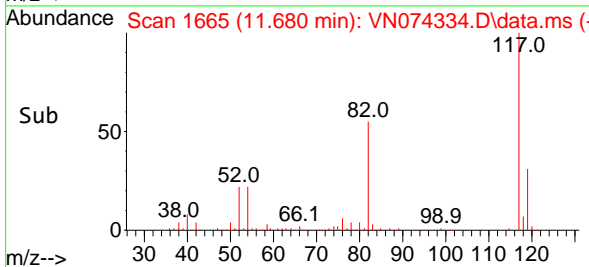
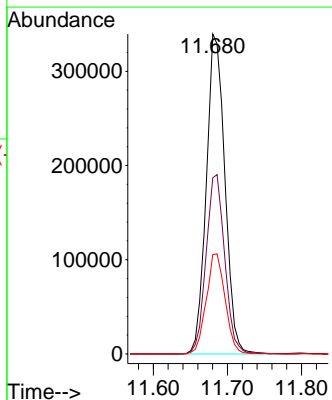
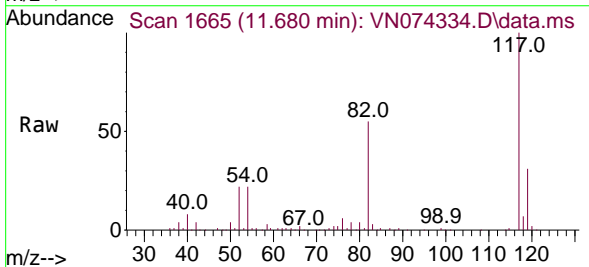
Ion	Ratio	Lower	Upper
95	100		
174	82.8	0.0	167.6
176	77.6	0.0	163.4

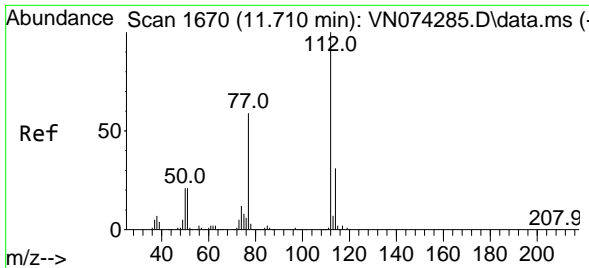


#63
 Chlorobenzene-d5
 Concen: 50.000 ug/l
 RT: 11.680 min Scan# 1665
 Delta R.T. -0.006 min
 Lab File: VN074334.D
 Acq: 03 Sep 2022 22:13

Tgt Ion: 117 Resp: 591410

Ion	Ratio	Lower	Upper
117	100		
82	55.1	44.2	66.2
119	31.0	25.4	38.0

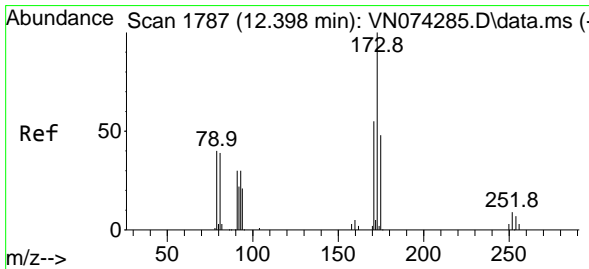
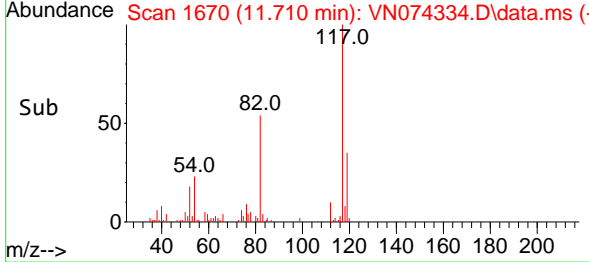
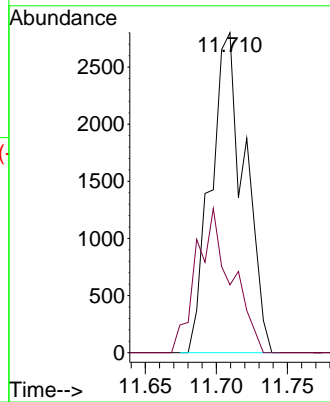
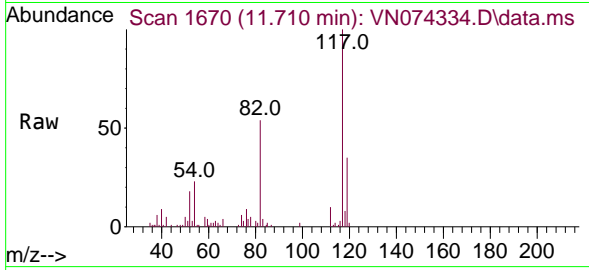




#65
 Chlorobenzene
 Concen: 0.359 ug/l
 RT: 11.710 min Scan# 1111
 Delta R.T. -0.000 min
 Lab File: VN074334.D
 Acq: 03 Sep 2022 22:13

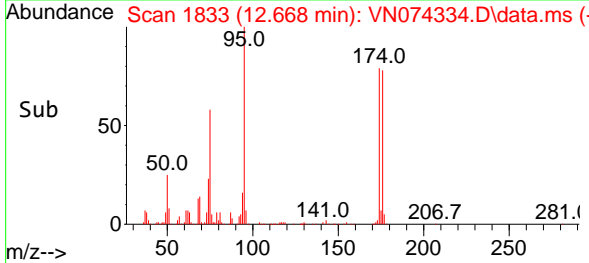
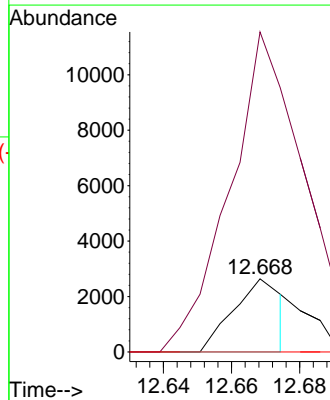
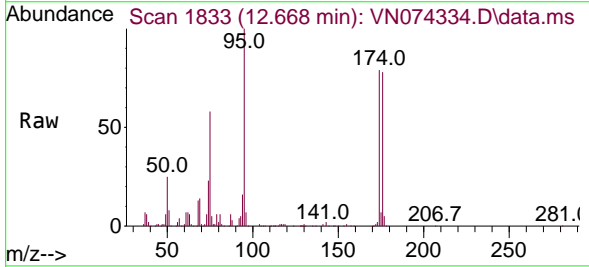
Instrument : MSVOA_N
 ClientSampleId : MW-13A-8-13-083022DL

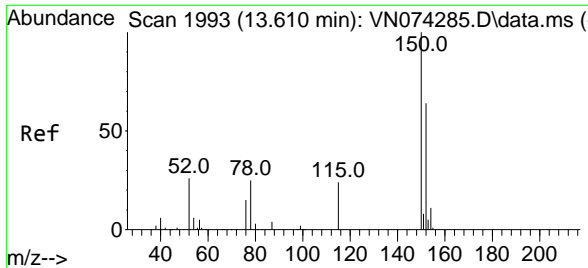
Tgt Ion:112 Resp: 4659
 Ion Ratio Lower Upper
 112 100
 114 21.2 25.4 38.2#



#71
 Bromoform
 Concen: 0.759 ug/l
 RT: 12.668 min Scan# 1833
 Delta R.T. 0.270 min
 Lab File: VN074334.D
 Acq: 03 Sep 2022 22:13

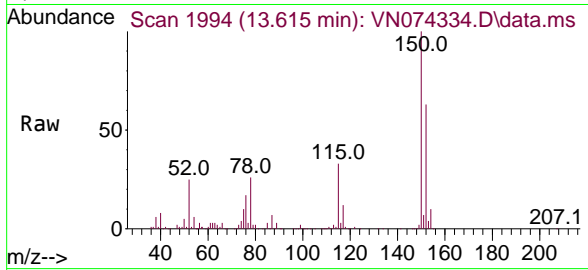
Tgt Ion:173 Resp: 2641
 Ion Ratio Lower Upper
 173 100
 175 478.6 24.6 73.6#
 254 0.0 0.1 0.1#



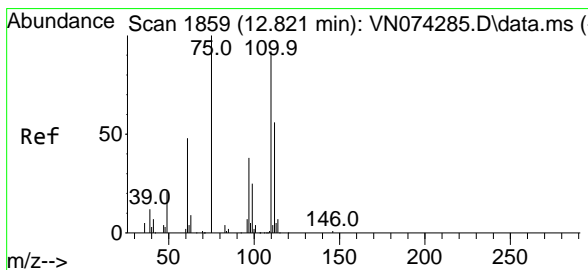
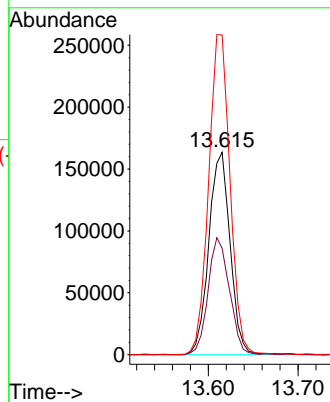
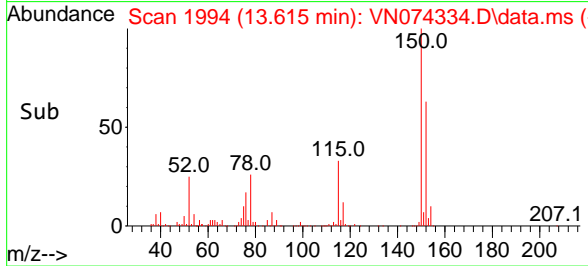


#72
 1,4-Dichlorobenzene-d4
 Concen: 50.000 ug/l
 RT: 13.615 min Scan# 1993
 Delta R.T. 0.005 min
 Lab File: VN074334.D
 Acq: 03 Sep 2022 22:13

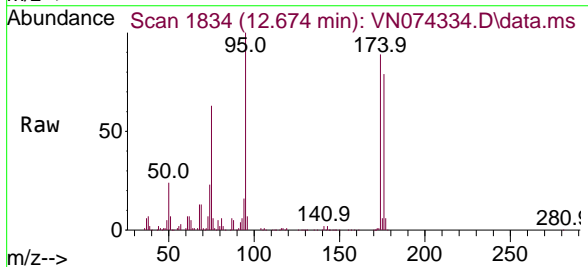
Instrument : MSVOA_N
 ClientSampleId : MW-13A-8-13-083022DL



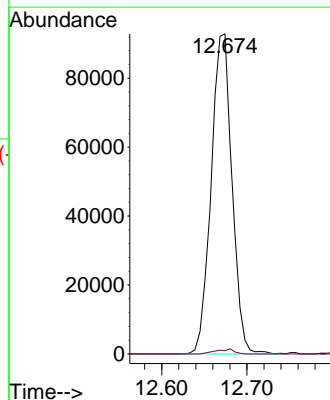
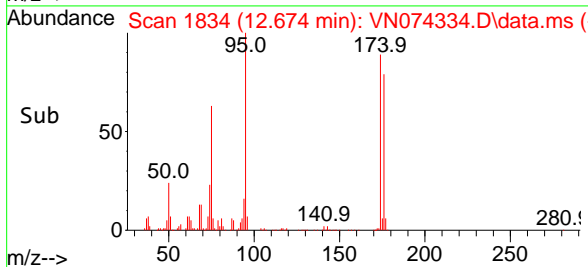
Tgt Ion:152 Resp: 270002
 Ion Ratio Lower Upper
 152 100
 115 57.9 28.9 86.7
 150 158.9 0.0 356.2

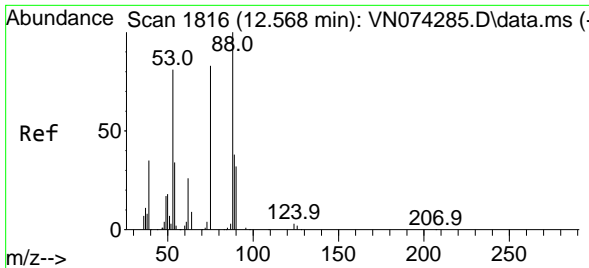


#76
 1,2,3-Trichloropropane
 Concen: 20.630 ug/l
 RT: 12.674 min Scan# 1834
 Delta R.T. -0.147 min
 Lab File: VN074334.D
 Acq: 03 Sep 2022 22:13



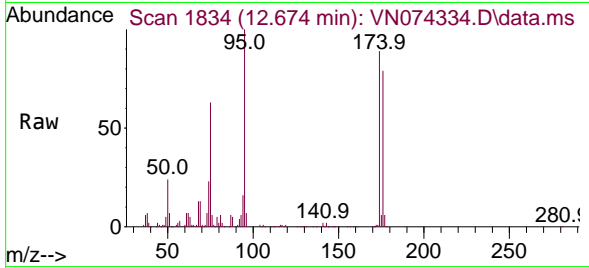
Tgt Ion: 75 Resp: 157761
 Ion Ratio Lower Upper
 75 100
 77 1.3 98.5 295.5#



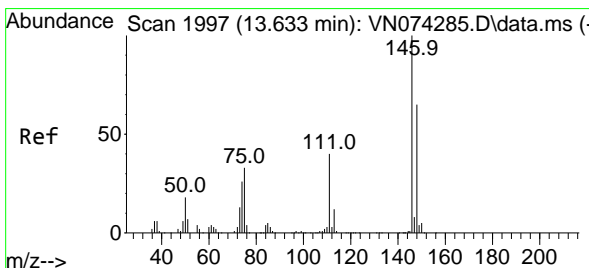
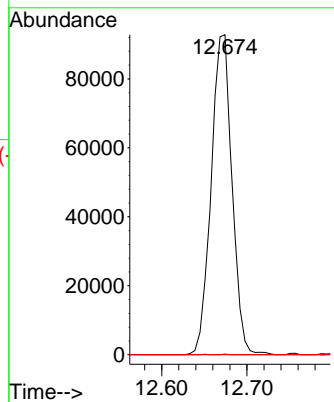
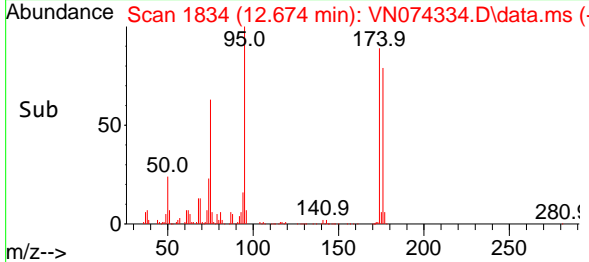


#81
 trans-1,4-Dichloro-2-butene
 Concen: 66.972 ug/l
 RT: 12.674 min Scan# 1816
 Delta R.T. 0.111 min
 Lab File: VN074334.D
 Acq: 03 Sep 2022 22:13

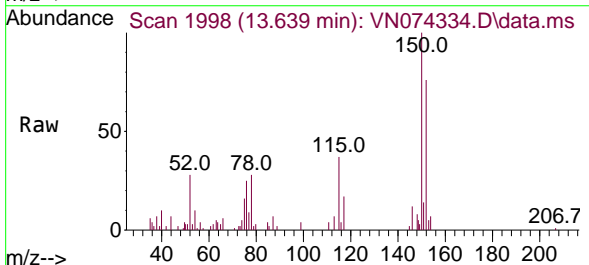
Instrument : MSVOA_N
 ClientSampleId : MW-13A-8-13-083022DL



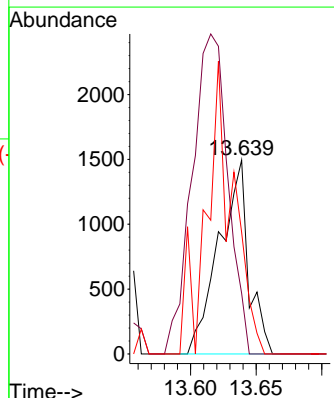
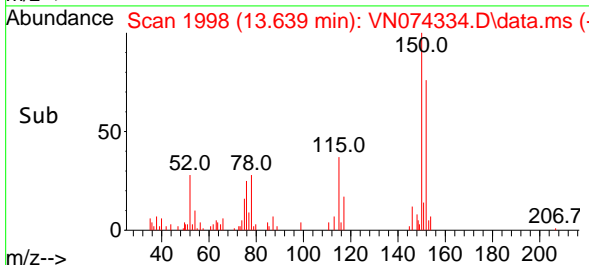
Tgt Ion: 75 Resp: 157761
 Ion Ratio Lower Upper
 75 100
 53 0.0 78.0 117.0#
 89 0.0 37.2 55.8#

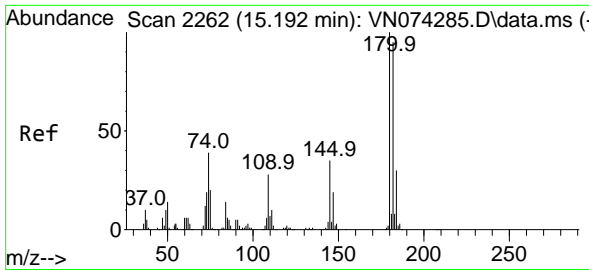


#88
 1,4-Dichlorobenzene
 Concen: 0.408 ug/l
 RT: 13.639 min Scan# 1998
 Delta R.T. 0.006 min
 Lab File: VN074334.D
 Acq: 03 Sep 2022 22:13



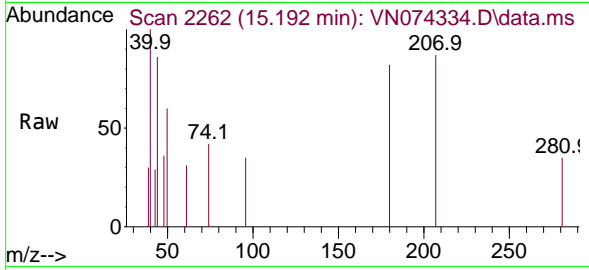
Tgt Ion:146 Resp: 2327
 Ion Ratio Lower Upper
 146 100
 111 0.0 19.1 57.1#
 148 0.0 31.4 94.3#



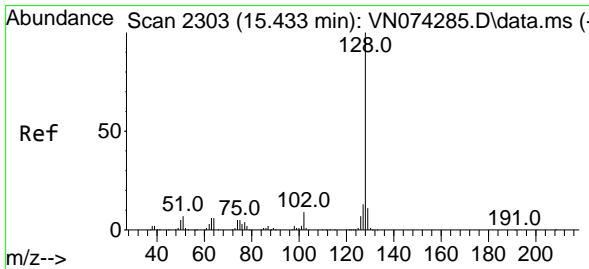
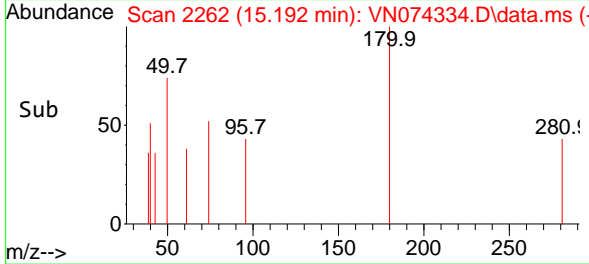
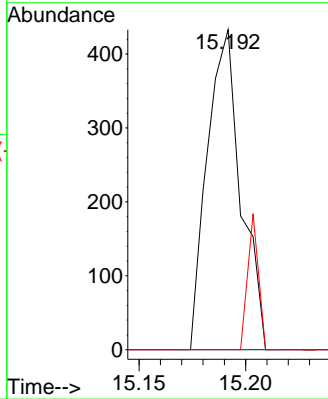


#93
 1,2,4-Trichlorobenzene
 Concen: 0.948 ug/l
 RT: 15.192 min Scan# 21
 Delta R.T. -0.006 min
 Lab File: VN074334.D
 Acq: 03 Sep 2022 22:13

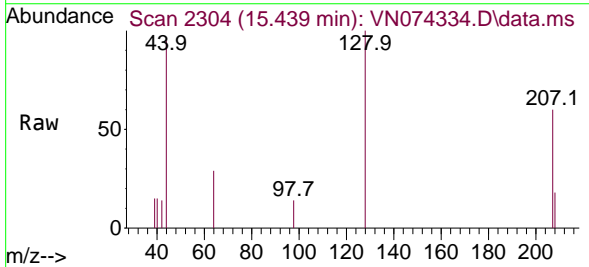
Instrument : MSVOA_N
 ClientSampleId : MW-13A-8-13-083022DL



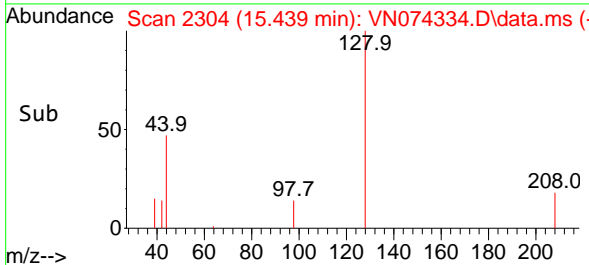
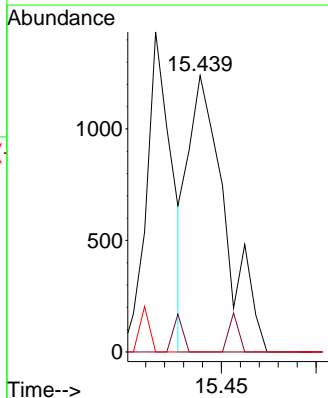
Tgt Ion:180 Resp: 476
 Ion Ratio Lower Upper
 180 100
 182 0.0 47.5 142.5#
 145 13.7 14.5 43.5#

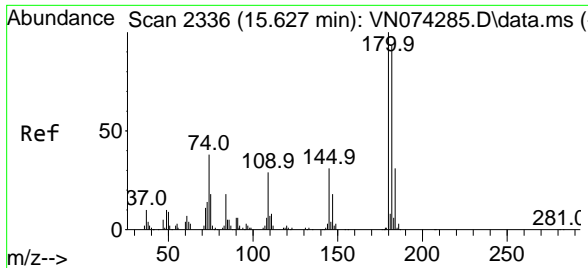


#95
 Naphthalene
 Concen: 0.848 ug/l
 RT: 15.439 min Scan# 2304
 Delta R.T. 0.006 min
 Lab File: VN074334.D
 Acq: 03 Sep 2022 22:13



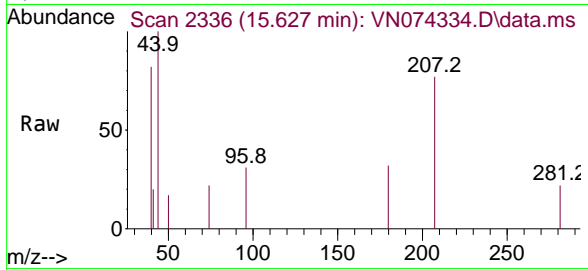
Tgt Ion:128 Resp: 1670
 Ion Ratio Lower Upper
 128 100
 127 3.6 10.3 15.5#
 129 0.0 8.6 13.0#





#96
 1,2,3-Trichlorobenzene
 Concen: 0.466 ug/l
 RT: 15.627 min Scan# 21
 Delta R.T. 0.000 min
 Lab File: VN074334.D
 Acq: 03 Sep 2022 22:13

Instrument :
 MSVOA_N
 ClientSampleId :
 MW-13A-8-13-083022DL



Tgt Ion:180 Resp: 272

Ion	Ratio	Lower	Upper
180	100		
182	31.6	47.8	143.3#
145	0.0	15.5	46.5#

