

Data Path : Z:\voasrv\HPCHEM1\MSVOA\_N\Data\VN090324\  
 Data File : VN083633.D  
 Acq On : 03 Sep 2024 18:45  
 Operator : JC\MD  
 Sample : PB163072ZHE#01  
 Misc : 5.0mL/MSVOA\_N/WATER  
 ALS Vial : 22 Sample Multiplier: 1

Instrument :  
 MSVOA\_N  
 ClientSampleId :  
 SB-2

Quant Time: Sep 04 03:01:12 2024  
 Quant Method : Z:\voasrv\HPCHEM1\MSVOA\_N\methods\82N083024W.M  
 Quant Title : SW846 8260  
 QLast Update : Sat Aug 31 00:48:10 2024  
 Response via : Initial Calibration

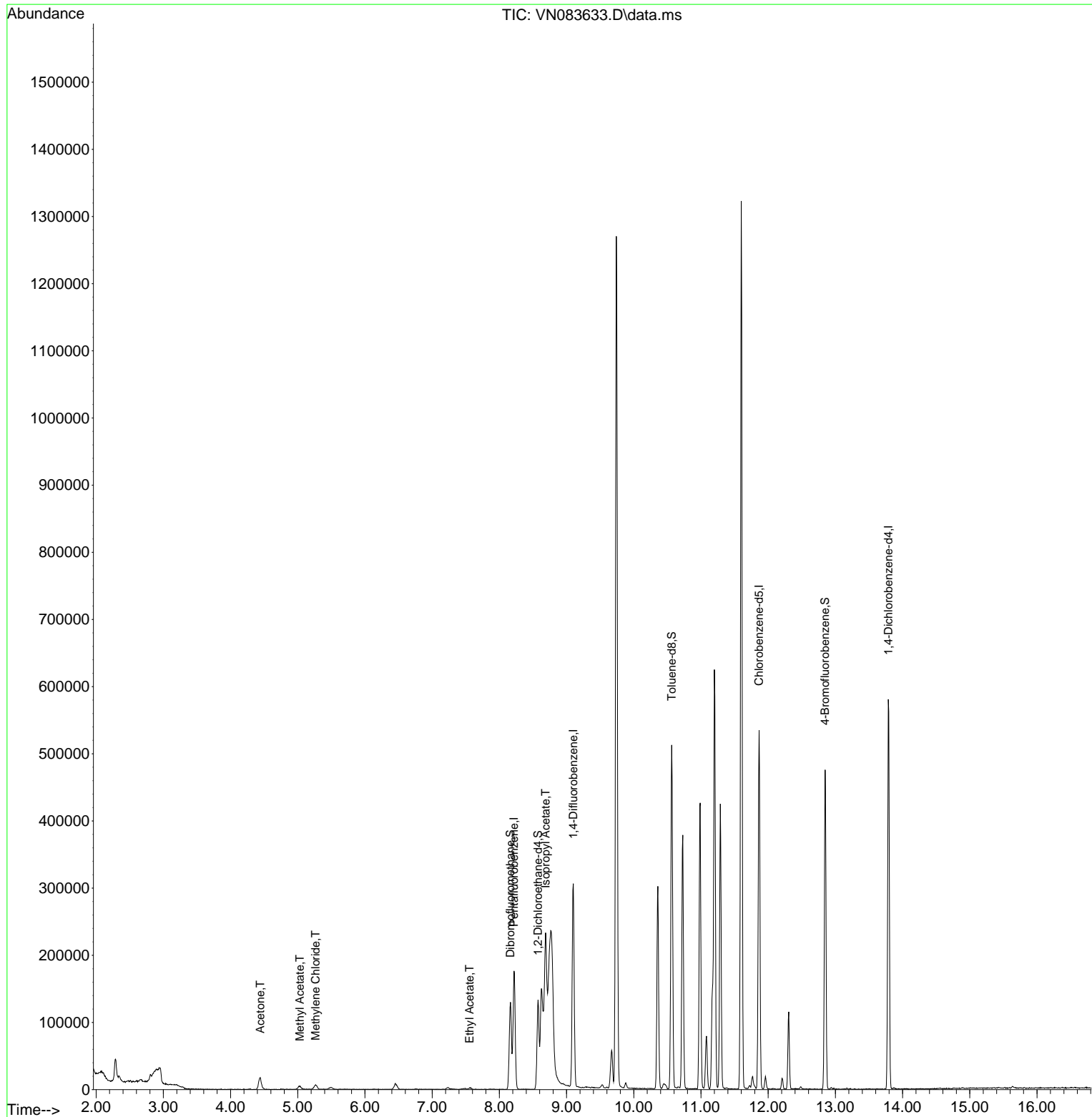
Compound	R.T.	QIon	Response	Conc	Units	Dev(Min)
-----						
Internal Standards						
1) Pentafluorobenzene	8.218	168	119287	50.000	ug/l	0.00
34) 1,4-Difluorobenzene	9.100	114	253352	50.000	ug/l	0.00
63) Chlorobenzene-d5	11.865	117	295534	50.000	ug/l	0.00
72) 1,4-Dichlorobenzene-d4	13.788	152	147651	50.000	ug/l	0.00
System Monitoring Compounds						
33) 1,2-Dichloroethane-d4	8.577	65	113898	68.319	ug/l	0.00
Spiked Amount	50.000	Range 74 - 125	Recovery	=	136.640%#	
35) Dibromofluoromethane	8.165	113	92279	60.516	ug/l	0.00
Spiked Amount	50.000	Range 75 - 124	Recovery	=	121.040%	
50) Toluene-d8	10.565	98	344860	57.827	ug/l	0.00
Spiked Amount	50.000	Range 86 - 113	Recovery	=	115.660%#	
62) 4-Bromofluorobenzene	12.847	95	165050	75.032	ug/l	0.00
Spiked Amount	50.000	Range 77 - 121	Recovery	=	150.060%#	
Target Compounds						
						Qvalue
16) Acetone	4.442	43	24418	36.728	ug/l	93
18) Methyl Acetate	5.030	43	10133	5.731	ug/l #	75
20) Methylene Chloride	5.265	84	5020	3.419	ug/l #	84
37) Ethyl Acetate	7.559	43	4325	1.868	ug/l #	84
43) Isopropyl Acetate	8.688	43	307139	66.510	ug/l #	75
-----						

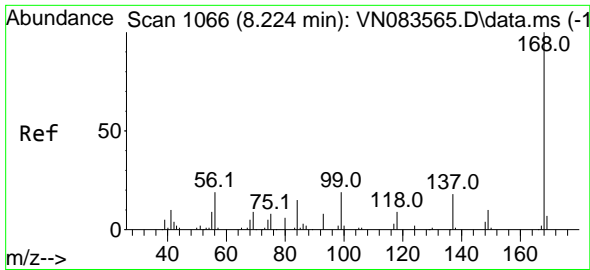
(#) = qualifier out of range (m) = manual integration (+) = signals summed

Data Path : Z:\voasrv\HPCHEM1\MSVOA\_N\Data\VN090324\  
 Data File : VN083633.D  
 Acq On : 03 Sep 2024 18:45  
 Operator : JC\MD  
 Sample : PB163072ZHE#01  
 Misc : 5.0mL/MSVOA\_N/WATER  
 ALS Vial : 22 Sample Multiplier: 1

Instrument :  
 MSVOA\_N  
 ClientSampleId :  
 SB-2

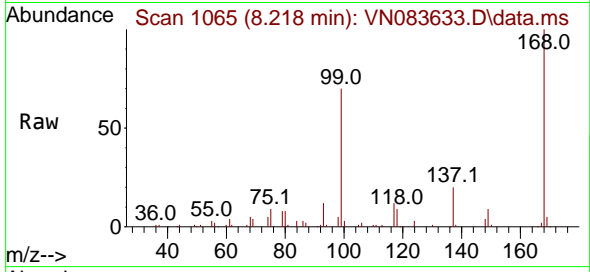
Quant Time: Sep 04 03:01:12 2024  
 Quant Method : Z:\voasrv\HPCHEM1\MSVOA\_N\methods\82N083024W.M  
 Quant Title : SW846 8260  
 QLast Update : Sat Aug 31 00:48:10 2024  
 Response via : Initial Calibration



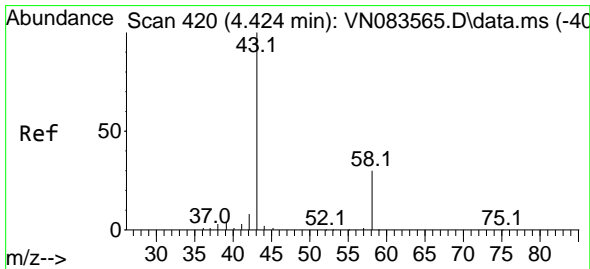
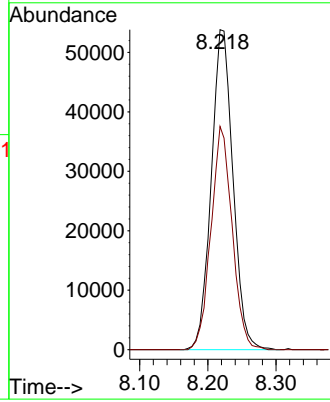
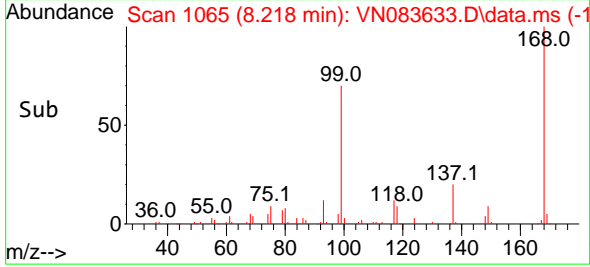


#1  
 Pentafluorobenzene  
 Concen: 50.000 ug/l  
 RT: 8.218 min Scan# 1066  
 Delta R.T. -0.006 min  
 Lab File: VN083633.D  
 Acq: 03 Sep 2024 18:45

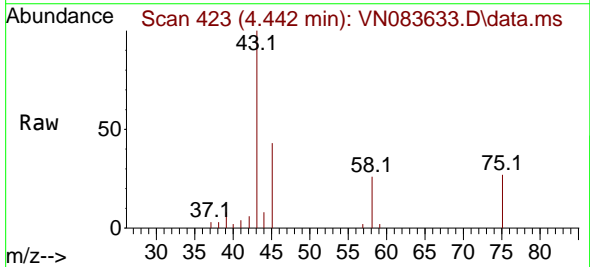
Instrument : MSVOA\_N  
 ClientSampleId : SB-2



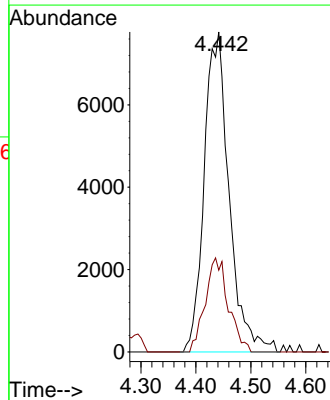
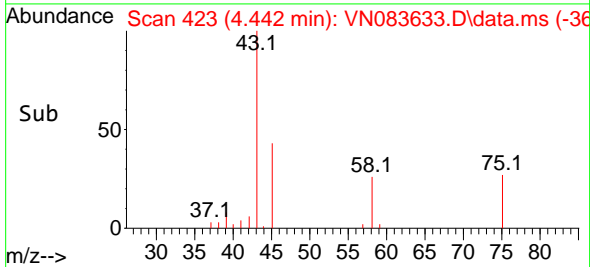
Tgt Ion:168 Resp: 119287  
 Ion Ratio Lower Upper  
 168 100  
 99 69.7 54.2 81.2

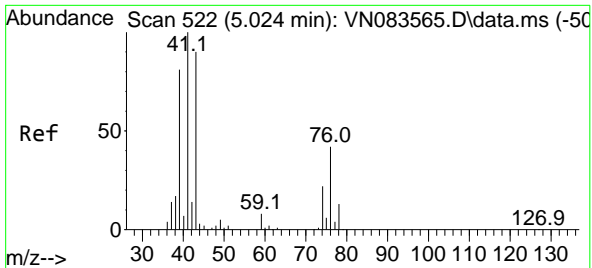


#16  
 Acetone  
 Concen: 36.728 ug/l  
 RT: 4.442 min Scan# 423  
 Delta R.T. 0.018 min  
 Lab File: VN083633.D  
 Acq: 03 Sep 2024 18:45



Tgt Ion: 43 Resp: 24418  
 Ion Ratio Lower Upper  
 43 100  
 58 25.6 23.7 35.5

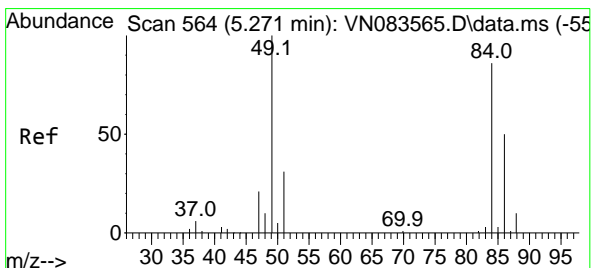
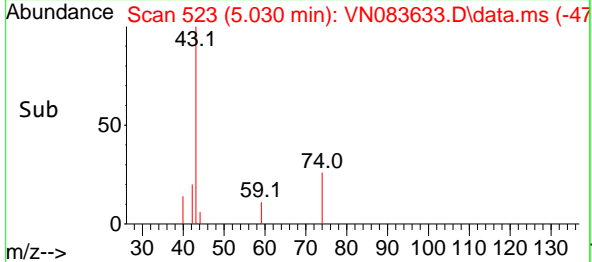
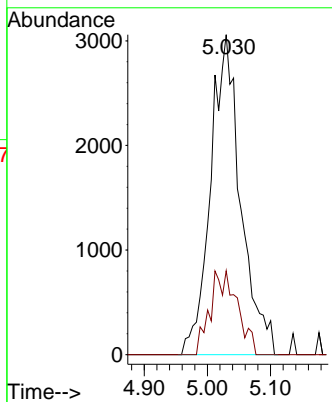
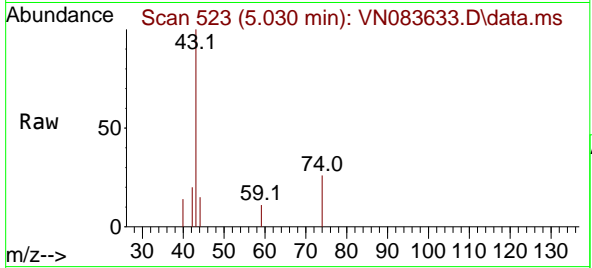




#18  
 Methyl Acetate  
 Concen: 5.731 ug/l  
 RT: 5.030 min Scan# 51  
 Delta R.T. 0.006 min  
 Lab File: VN083633.D  
 Acq: 03 Sep 2024 18:45

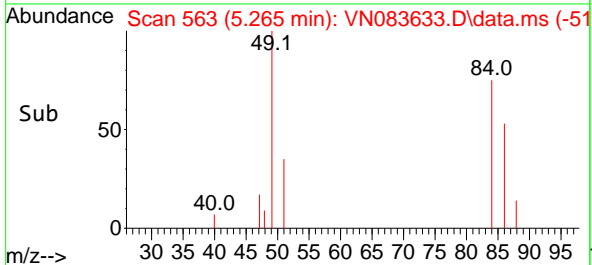
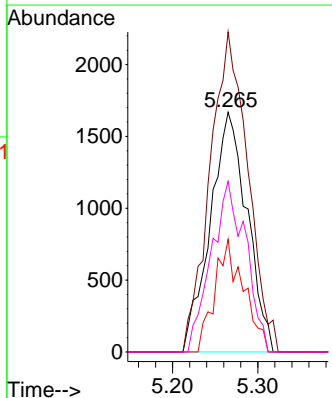
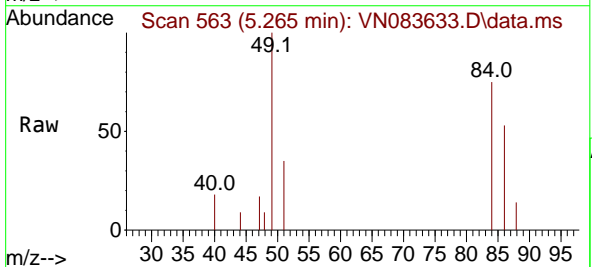
Instrument :  
 MSVOA\_N  
 ClientSampleId :  
 SB-2

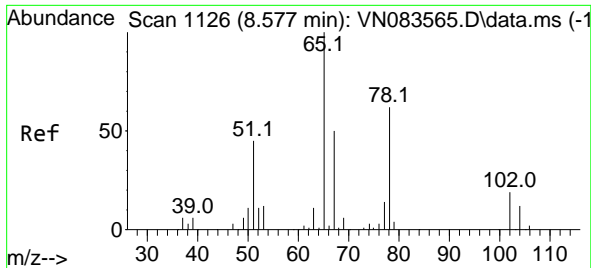
Tgt Ion: 43 Resp: 10133  
 Ion Ratio Lower Upper  
 43 100  
 74 11.5 19.0 28.4#



#20  
 Methylene Chloride  
 Concen: 3.419 ug/l  
 RT: 5.265 min Scan# 563  
 Delta R.T. -0.006 min  
 Lab File: VN083633.D  
 Acq: 03 Sep 2024 18:45

Tgt Ion: 84 Resp: 5020  
 Ion Ratio Lower Upper  
 84 100  
 49 133.5 93.4 140.0  
 51 47.0 29.2 43.8#  
 86 71.2 46.9 70.3#

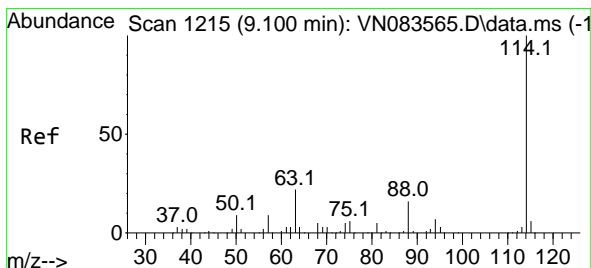
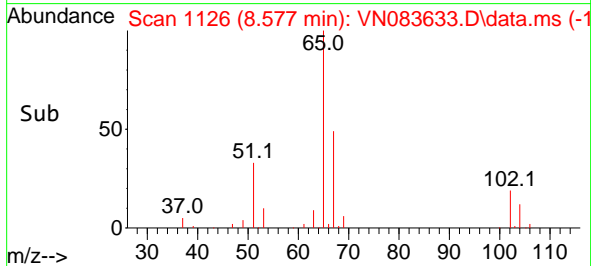
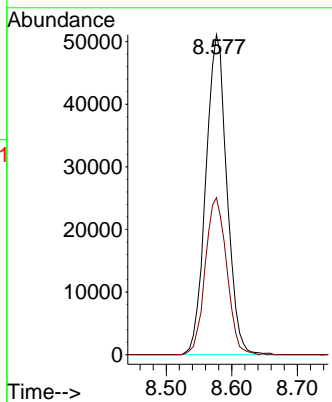
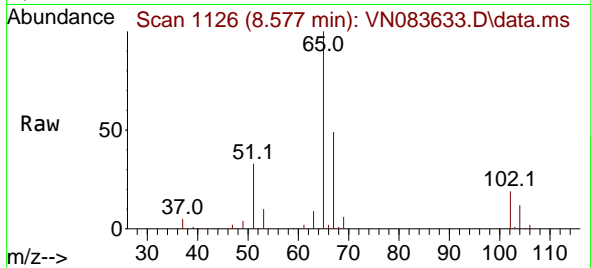




#33  
 1,2-Dichloroethane-d4  
 Concen: 68.319 ug/l  
 RT: 8.577 min Scan# 1126  
 Delta R.T. -0.000 min  
 Lab File: VN083633.D  
 Acq: 03 Sep 2024 18:45

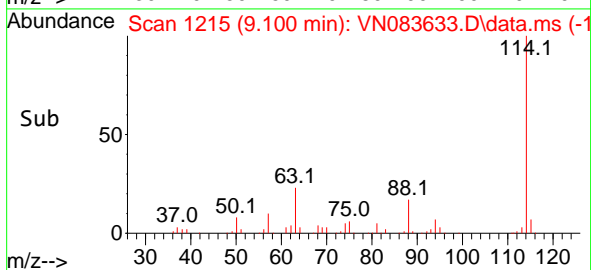
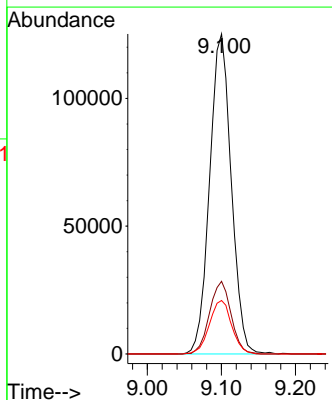
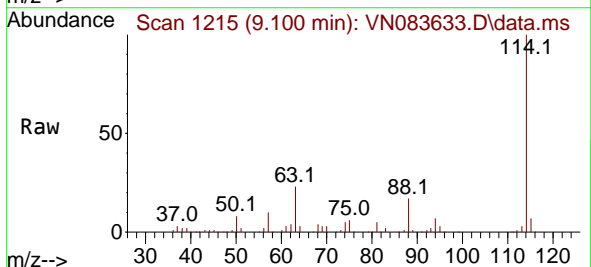
Instrument : MSVOA\_N  
 ClientSampleId : SB-2

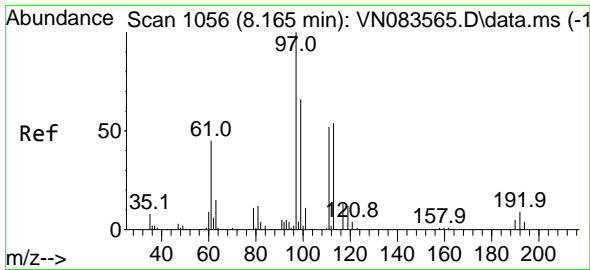
Tgt Ion: 65 Resp: 113898  
 Ion Ratio Lower Upper  
 65 100  
 67 50.1 0.0 100.8



#34  
 1,4-Difluorobenzene  
 Concen: 50.000 ug/l  
 RT: 9.100 min Scan# 1215  
 Delta R.T. -0.000 min  
 Lab File: VN083633.D  
 Acq: 03 Sep 2024 18:45

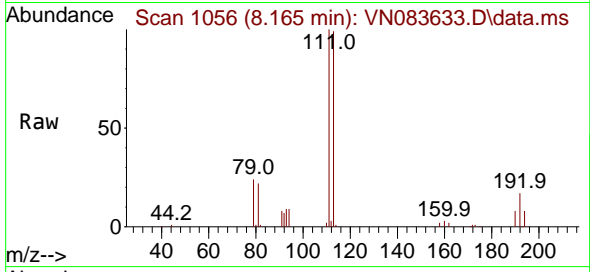
Tgt Ion: 114 Resp: 253352  
 Ion Ratio Lower Upper  
 114 100  
 63 22.7 0.0 43.4  
 88 16.7 0.0 32.6



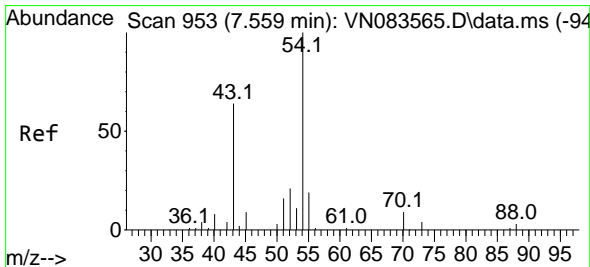
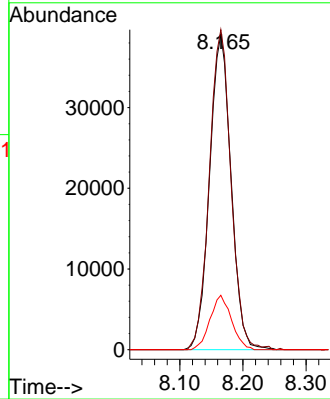
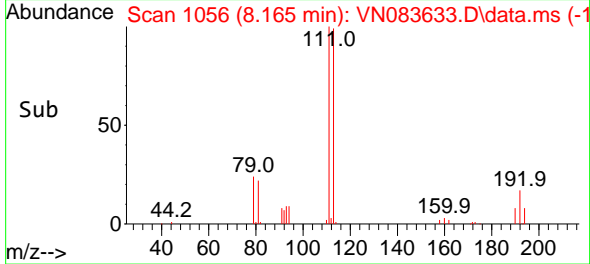


#35  
 Dibromofluoromethane  
 Concen: 60.516 ug/l  
 RT: 8.165 min Scan# 1056  
 Delta R.T. -0.000 min  
 Lab File: VN083633.D  
 Acq: 03 Sep 2024 18:45

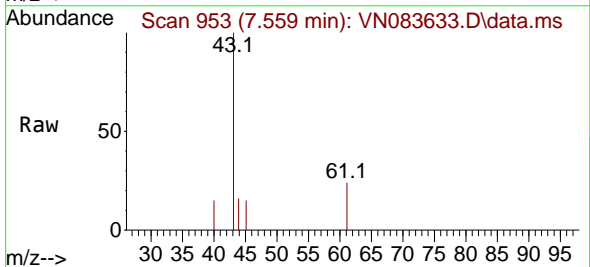
Instrument : MSVOA\_N  
 ClientSampleId : SB-2



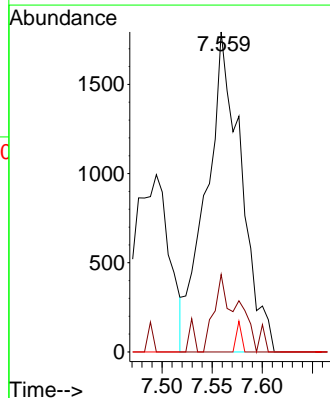
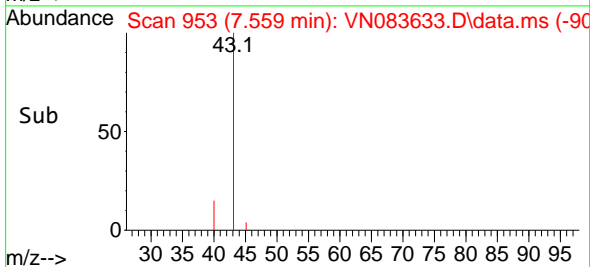
Tgt Ion: 113 Resp: 92279  
 Ion Ratio Lower Upper  
 113 100  
 111 101.9 82.6 124.0  
 192 17.2 14.3 21.5

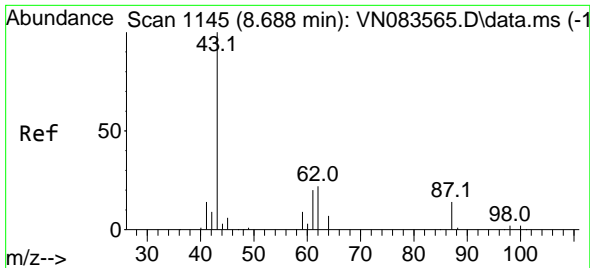


#37  
 Ethyl Acetate  
 Concen: 1.868 ug/l  
 RT: 7.559 min Scan# 953  
 Delta R.T. -0.000 min  
 Lab File: VN083633.D  
 Acq: 03 Sep 2024 18:45



Tgt Ion: 43 Resp: 4325  
 Ion Ratio Lower Upper  
 43 100  
 61 10.7 11.1 16.7#  
 70 1.4 8.8 13.2#



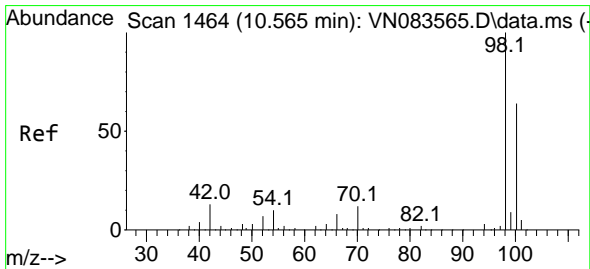
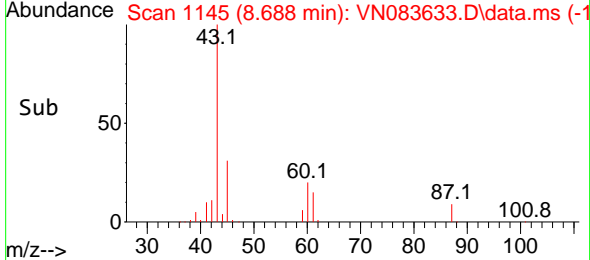
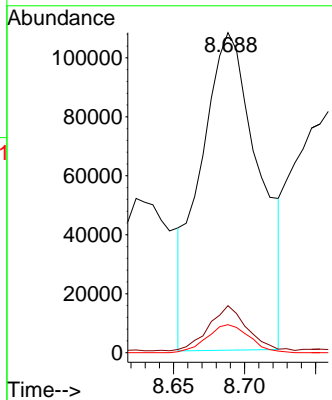
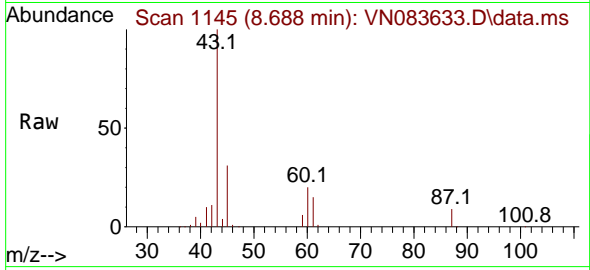


#43  
 Isopropyl Acetate  
 Concen: 66.510 ug/l  
 RT: 8.688 min Scan# 1145  
 Delta R.T. 0.000 min  
 Lab File: VN083633.D  
 Acq: 03 Sep 2024 18:45

Instrument : MSVOA\_N  
 ClientSampleId : SB-2

Tgt Ion: 43 Resp: 307139

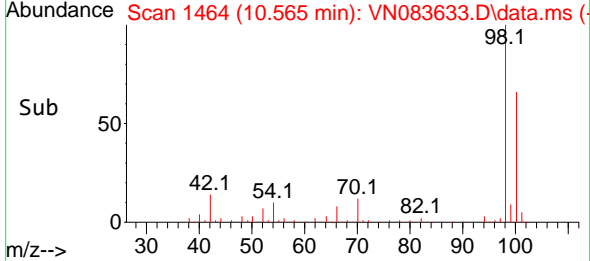
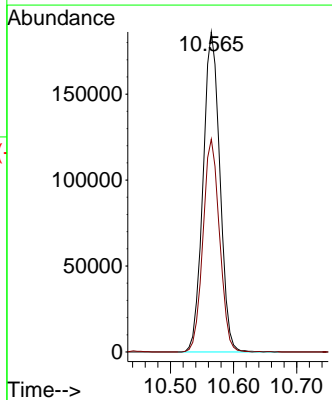
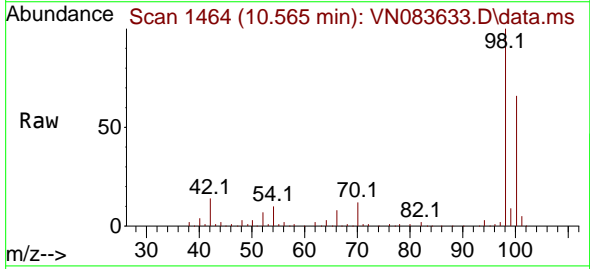
Ion	Ratio	Lower	Upper
43	100		
61	9.3	19.4	29.0#
87	6.4	9.8	14.6#

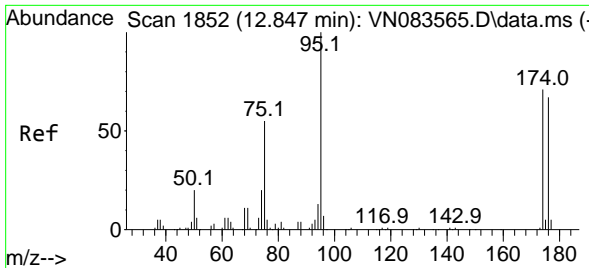


#50  
 Toluene-d8  
 Concen: 57.827 ug/l  
 RT: 10.565 min Scan# 1464  
 Delta R.T. -0.000 min  
 Lab File: VN083633.D  
 Acq: 03 Sep 2024 18:45

Tgt Ion: 98 Resp: 344860

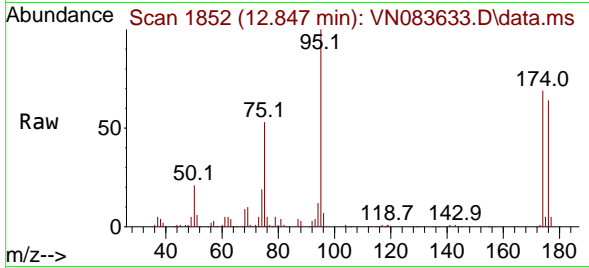
Ion	Ratio	Lower	Upper
98	100		
100	65.3	52.0	78.0



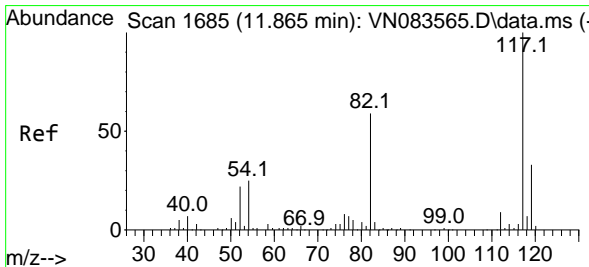
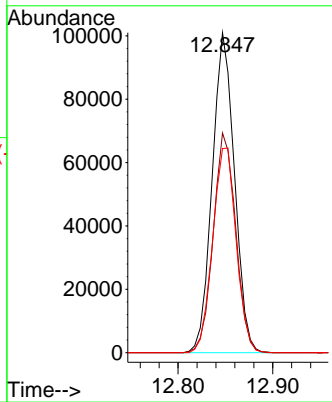
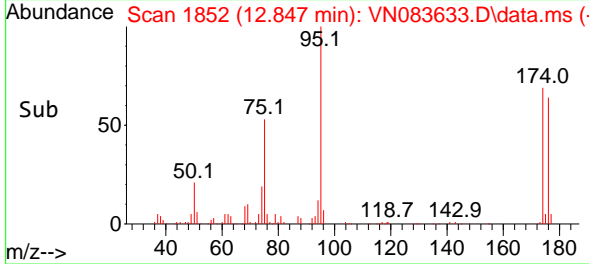


#62  
 4-Bromofluorobenzene  
 Concen: 75.032 ug/l  
 RT: 12.847 min Scan# 1852  
 Delta R.T. -0.000 min  
 Lab File: VN083633.D  
 Acq: 03 Sep 2024 18:45

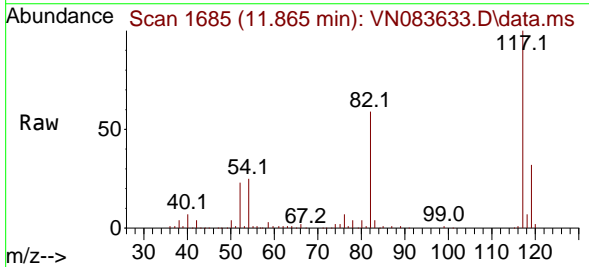
Instrument : MSVOA\_N  
 ClientSampleId : SB-2



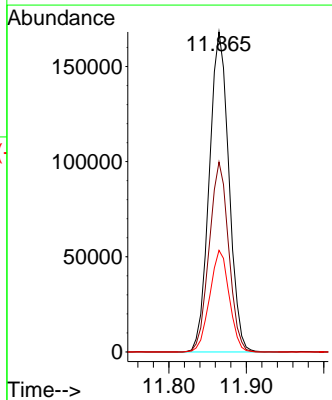
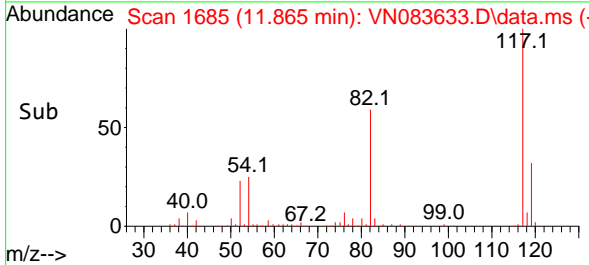
Tgt Ion: 95 Resp: 165050  
 Ion Ratio Lower Upper  
 95 100  
 174 69.4 0.0 139.8  
 176 67.6 0.0 131.4



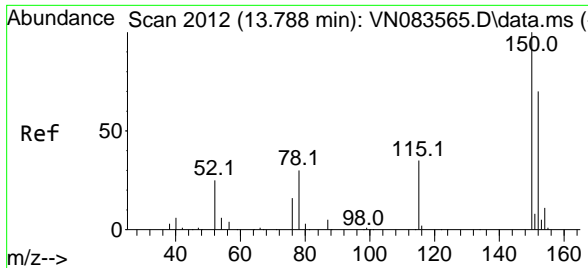
#63  
 Chlorobenzene-d5  
 Concen: 50.000 ug/l  
 RT: 11.865 min Scan# 1685  
 Delta R.T. -0.000 min  
 Lab File: VN083633.D  
 Acq: 03 Sep 2024 18:45



Tgt Ion: 117 Resp: 295534  
 Ion Ratio Lower Upper  
 117 100  
 82 59.4 47.4 71.0  
 119 31.8 26.3 39.5

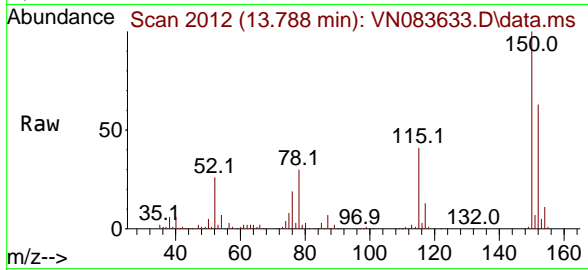






#72  
 1,4-Dichlorobenzene-d4  
 Concen: 50.000 ug/l  
 RT: 13.788 min Scan# 20  
 Delta R.T. -0.000 min  
 Lab File: VN083633.D  
 Acq: 03 Sep 2024 18:45

Instrument :  
 MSVOA\_N  
 ClientSampleId :  
 SB-2



Tgt Ion	Resp	Lower	Upper
152	147651		
152	100		
115	64.6	32.2	96.6
150	158.1	0.0	348.6

