

Data Path : Z:\VOASRV\HPCHEM1\MSVOA N\DATA\VN090418\  
 Data File : VN051019.D  
 Acq On : 4 Sep 2018 15:06  
 Operator : MD\SY  
 Sample : PB112553ZHE#05  
 Misc : 5.00mL/MSVOA N/WATER  
 ALS Vial : 18 Sample Multiplier: 1

Instrument :  
 MSVOA\_N  
 ClientSampleId :  
 PB112553ZHE#05

Quant Time: Sep 05 01:09:06 2018  
 Quant Method : Z:\voasrv\HPCHEM1\MSVOA\_N\methods\82N082118W.M  
 Quant Title : SW846 8260  
 QLast Update : Wed Aug 22 05:38:12 2018  
 Response via : Initial Calibration

Internal Standards	R.T.	QIon	Response	Conc	Units	Dev(Min)
1) Pentafluorobenzene	7.67	168	568134	50.00	ug/l	0.00
34) 1,4-Difluorobenzene	8.59	114	933814	50.00	ug/l	0.00
63) Chlorobenzene-d5	11.41	117	792501	50.00	ug/l	0.00
72) 1,4-Dichlorobenzene-d4	13.35	152	255694	50.00	ug/l	0.00

## System Monitoring Compounds

33) 1,2-Dichloroethane-d4	8.03	65	370624	54.19	ug/l	0.00
Spiked Amount	50.000		Recovery	=	108.38%	
35) Dibromofluoromethane	7.59	113	351157	47.27	ug/l	0.00
Spiked Amount	50.000		Recovery	=	94.54%	
50) Toluene-d8	10.09	98	1261733	45.43	ug/l	0.00
Spiked Amount	50.000		Recovery	=	90.86%	
62) 4-Bromofluorobenzene	12.40	95	333697	36.15	ug/l	0.00
Spiked Amount	50.000		Recovery	=	72.30%	

## Target Compounds

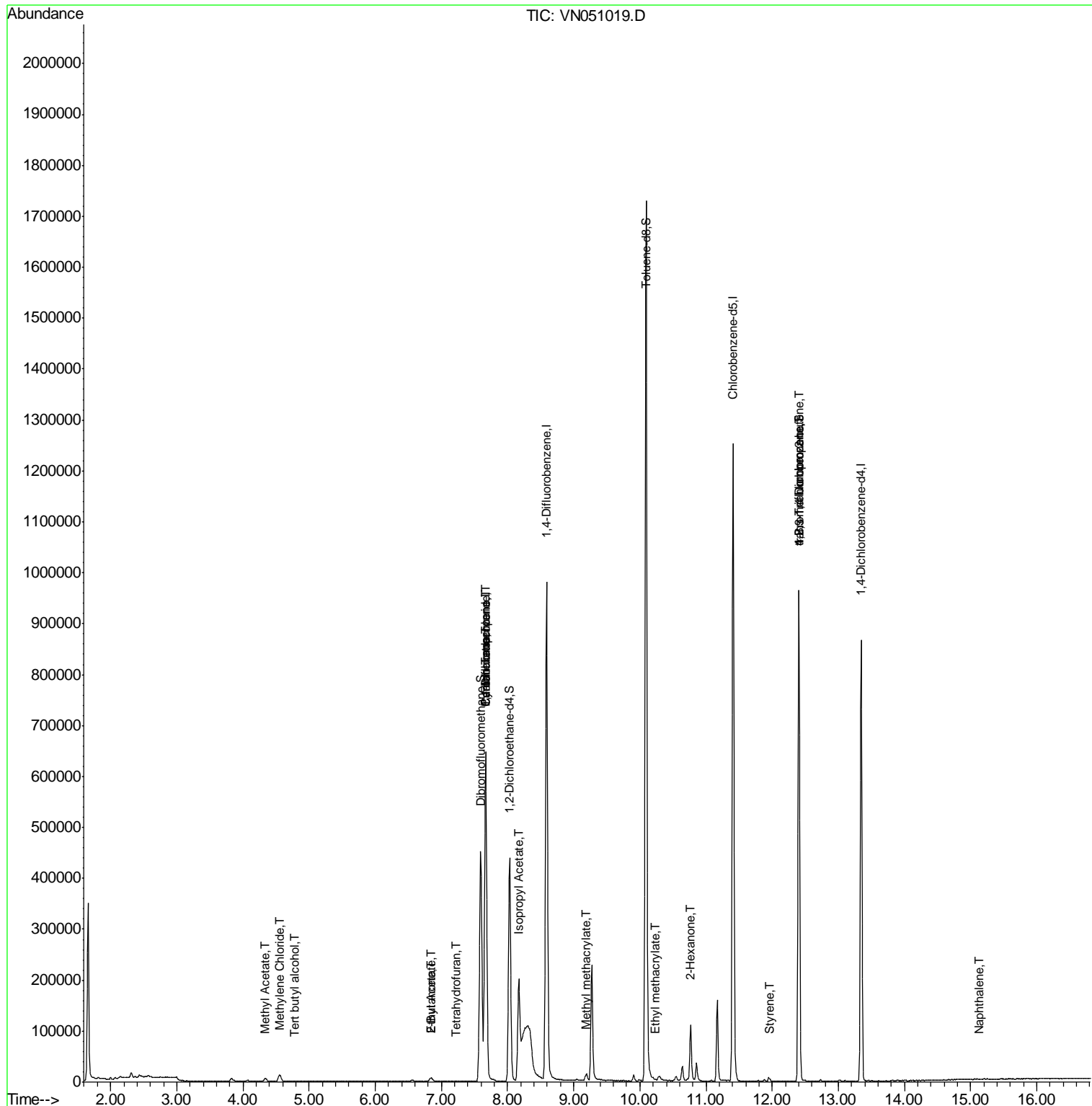
						Qvalue
5) Bromomethane	2.57	94	2157	Below Cal		97
11) Tert butyl alcohol	4.78	59	528	1.21 ug/l	#	72
16) Acetone	3.82	43	10538	Below Cal		95
18) Methyl Acetate	4.34	43	12208	1.89 ug/l		94
20) Methylene Chloride	4.55	84	11095	1.44 ug/l		96
25) 2-Butanone	6.84	43	3891	1.41 ug/l		93
29) Tetrahydrofuran	7.23	42	933	0.59 ug/l	#	38
31) Cyclohexane	7.67	56	9485	1.27 ug/l	#	1
36) 1,1-Dichloropropene	7.67	75	37413	3.40 ug/l	#	50
37) Ethyl Acetate	6.84	43	3891	0.61 ug/l	#	69
38) Carbon Tetrachloride	7.67	117	49187	4.42 ug/l	#	17
43) Isopropyl Acetate	8.17	43	269632	24.77 ug/l		94
48) Methyl methacrylate	9.18	41	7590	1.37 ug/l	#	16
56) Ethyl methacrylate	10.23	69	1744	2.52 ug/l	#	83
59) 2-Hexanone	10.77	43	18159	4.20 ug/l	#	60
70) Styrene	11.97	104	62	1.27 ug/l	#	26
75) 1,1,2,2-Tetrachloroethane	12.40	83	136	Below Cal	#	1
76) 1,2,3-Trichloropropane	12.40	75	154942	34.60 ug/l	#	100
81) trans-1,4-Dichloro-2-buten	12.40	75	154942	116.96 ug/l	#	15
95) Naphthalene	15.14	128	281	5.42 ug/l	#	69

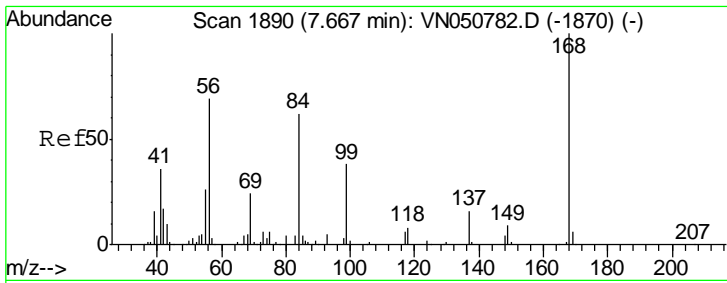
(#) = qualifier out of range (m) = manual integration (+) = signals summed

Data Path : Z:\VOASRV\HPCHEM1\MSVOA N\DATA\VN090418\  
 Data File : VN051019.D  
 Acq On : 4 Sep 2018 15:06  
 Operator : MD\SY  
 Sample : PB112553ZHE#05  
 Misc : 5.00mL/MSVOA N/WATER  
 ALS Vial : 18 Sample Multiplier: 1

Instrument :  
 MSVOA\_N  
 Client Sample ID :  
 PB112553ZHE#05

Quant Time: Sep 05 01:09:06 2018  
 Quant Method : Z:\voasrv\HPCHEM1\MSVOA\_N\methods\82N082118W.M  
 Quant Title : SW846 8260  
 QLast Update : Wed Aug 22 05:38:12 2018  
 Response via : Initial Calibration

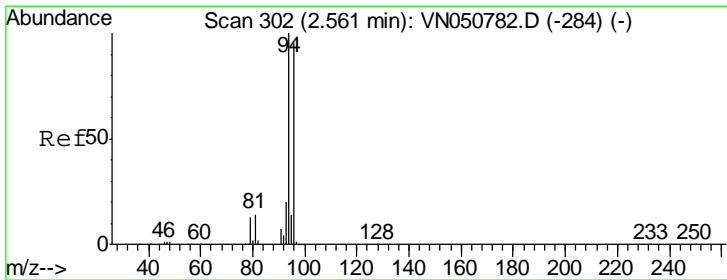
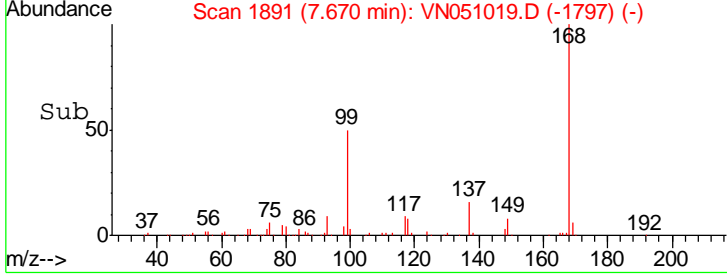
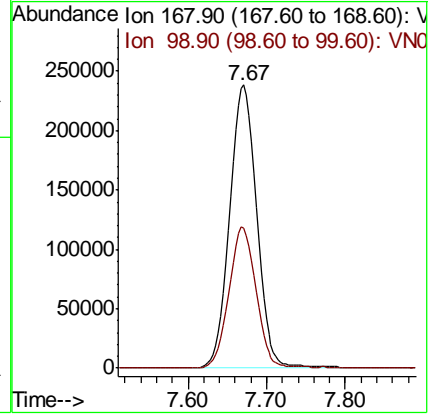
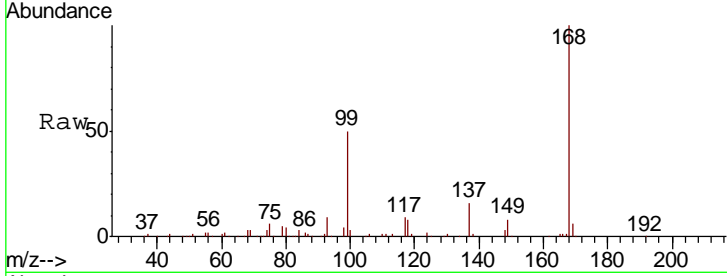




#1  
 Pentafluorobenzene  
 Concen: 50.00 ug/l  
 RT: 7.67 min Scan# 1891  
 Delta R.T. 0.00 min  
 Lab File: VN051019.D  
 Acq: 4 Sep 2018 15:06

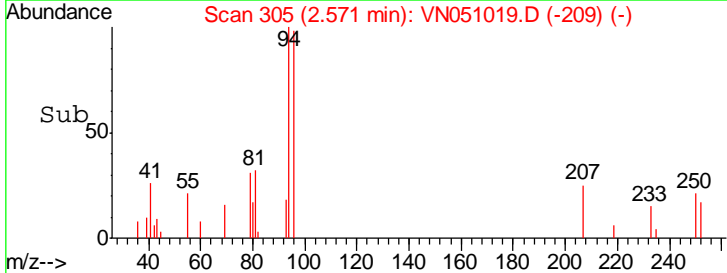
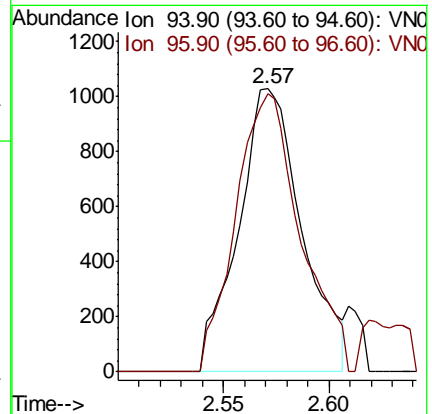
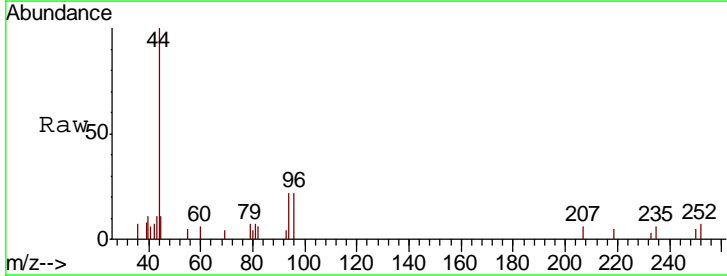
Instrument : MSVOA\_N  
 ClientSampled : PB112553ZHE#05

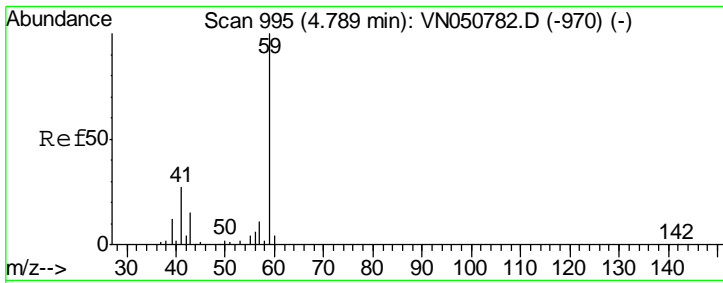
Tgt Ion	Resp	Lower	Upper
168	100		
99	49.6	39.6	59.4



#5  
 Bromomethane  
 Concen: Below Cal  
 RT: 2.57 min Scan# 305  
 Delta R.T. 0.01 min  
 Lab File: VN051019.D  
 Acq: 4 Sep 2018 15:06

Tgt Ion	Resp	Lower	Upper
94	100		
96	98.4	76.2	114.2

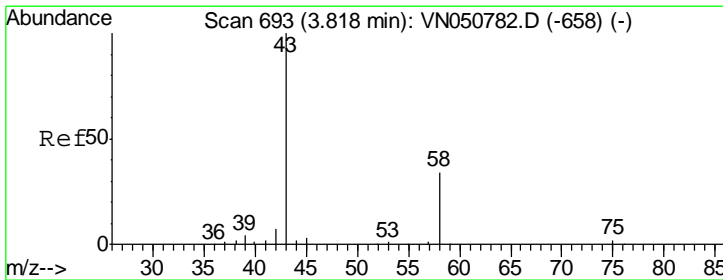
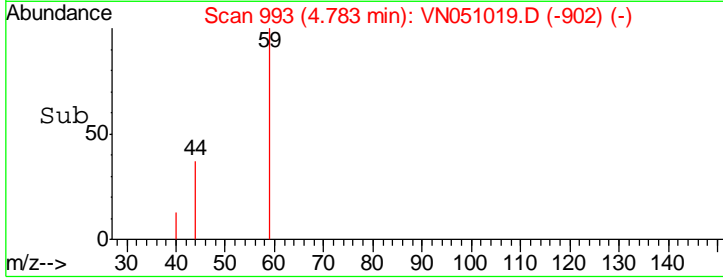
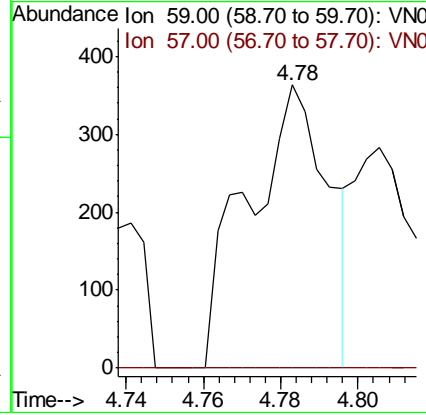
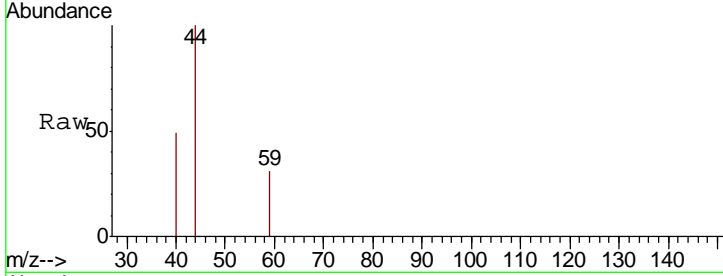




#11  
 Tert butyl alcohol  
 Concen: 1.21 ug/l  
 RT: 4.78 min Scan# 993  
 Delta R.T. -0.01 min  
 Lab File: VN051019.D  
 Acq: 4 Sep 2018 15:06

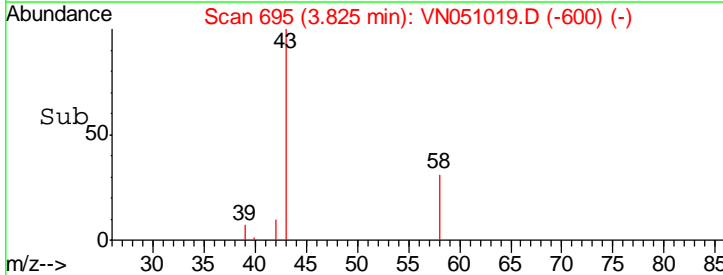
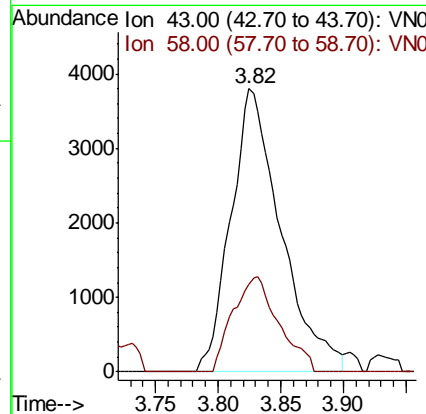
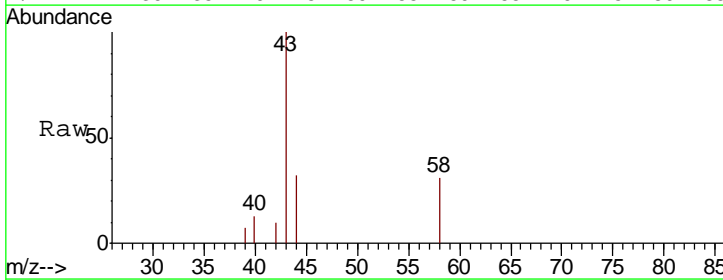
Instrument : MSVOA\_N  
 ClientSampled : PB112553ZHE#05

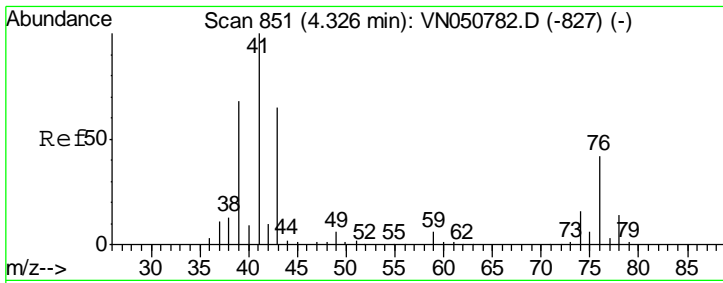
Tgt Ion	Resp	Lower	Upper
59	100		
57	0.0	8.3	12.5#



#16  
 Acetone  
 Concen: Below Cal  
 RT: 3.82 min Scan# 695  
 Delta R.T. 0.01 min  
 Lab File: VN051019.D  
 Acq: 4 Sep 2018 15:06

Tgt Ion	Resp	Lower	Upper
43	100		
58	31.1	27.2	40.8

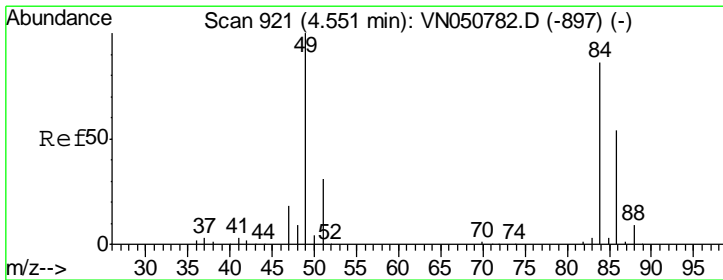
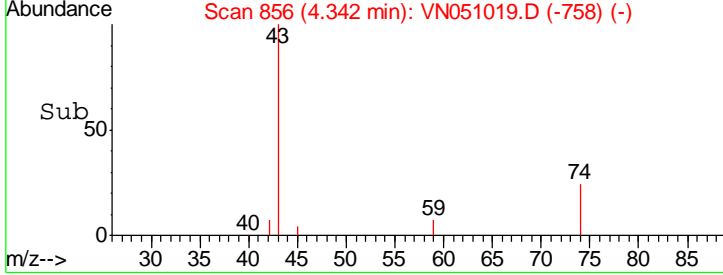
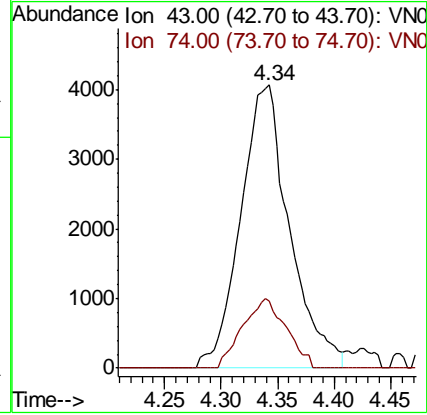
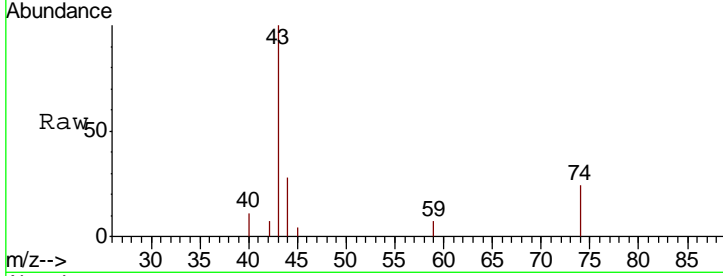




#18  
 Methyl Acetate  
 Concen: 1.89 ug/l  
 RT: 4.34 min Scan# 856  
 Delta R.T. 0.02 min  
 Lab File: VN051019.D  
 Acq: 4 Sep 2018 15:06

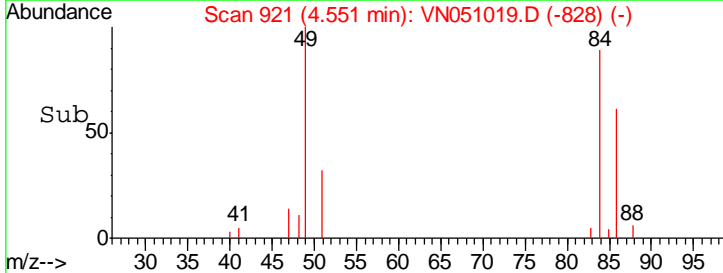
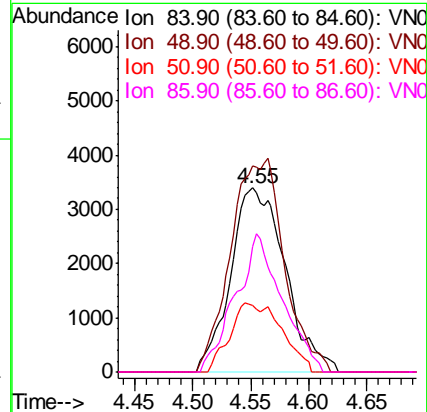
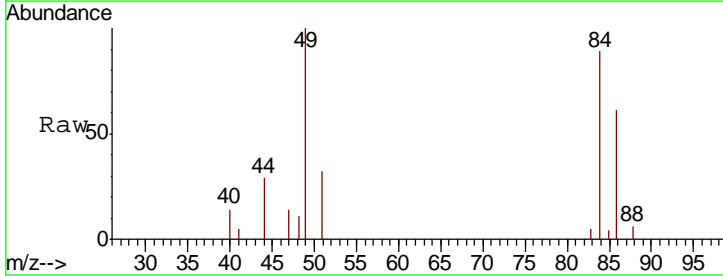
Instrument : MSVOA\_N  
 ClientSampleId : PB112553ZHE#05

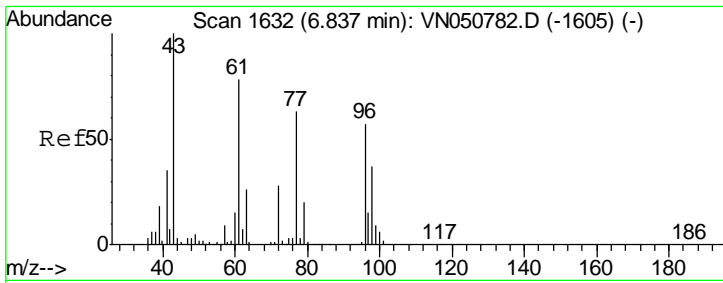
Tgt Ion	Resp	Lower	Upper
43	100		
74	21.8	19.8	29.8



#20  
 Methylene Chloride  
 Concen: 1.44 ug/l  
 RT: 4.55 min Scan# 921  
 Delta R.T. 0.00 min  
 Lab File: VN051019.D  
 Acq: 4 Sep 2018 15:06

Tgt Ion	Resp	Lower	Upper
84	100		
49	111.9	93.2	139.8
51	36.2	29.0	43.6
86	68.0	49.8	74.8

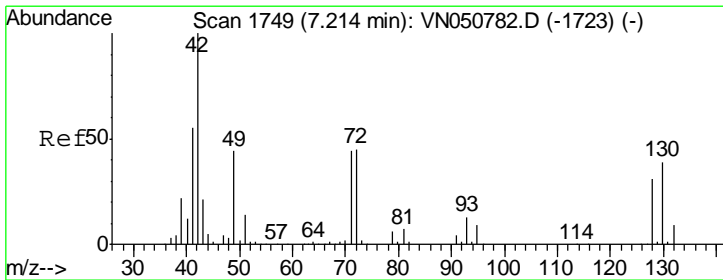
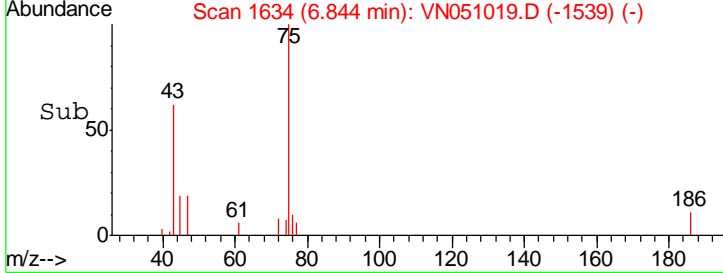
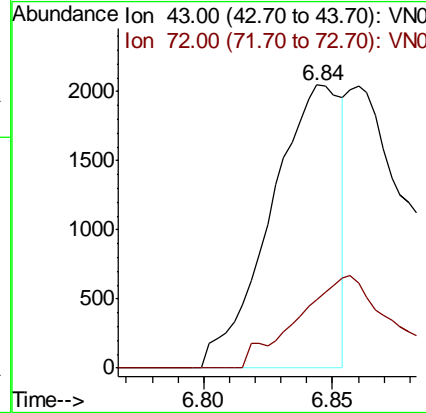
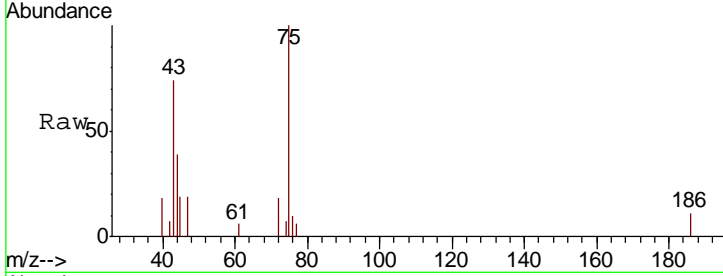




#25  
 2-Butanone  
 Concen: 1.41 ug/l  
 RT: 6.84 min Scan# 1634  
 Delta R.T. 0.01 min  
 Lab File: VN051019.D  
 Acq: 4 Sep 2018 15:06

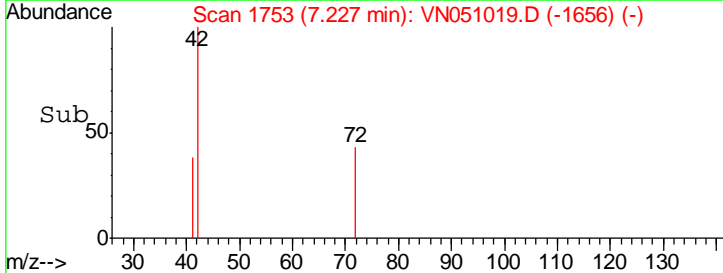
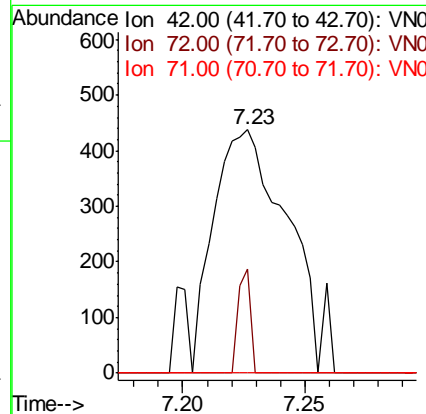
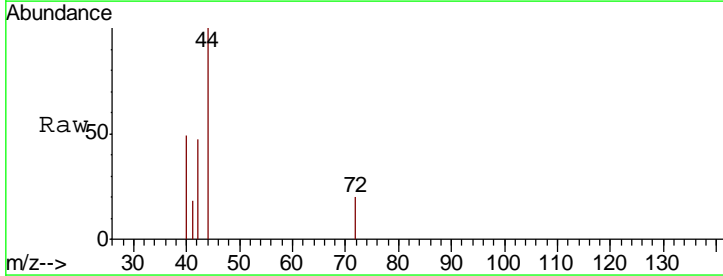
Instrument : MSVOA\_N  
 ClientSampled : PB112553ZHE#05

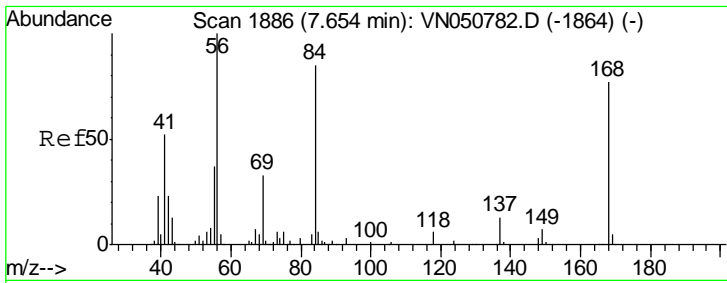
Tgt Ion	Resp	Lower	Upper
43	100		
72	24.1	22.3	33.5



#29  
 Tetrahydrofuran  
 Concen: 0.59 ug/l  
 RT: 7.23 min Scan# 1753  
 Delta R.T. 0.01 min  
 Lab File: VN051019.D  
 Acq: 4 Sep 2018 15:06

Tgt Ion	Resp	Lower	Upper
42	100		
72	7.2	35.5	53.3#
71	0.0	33.7	50.5#

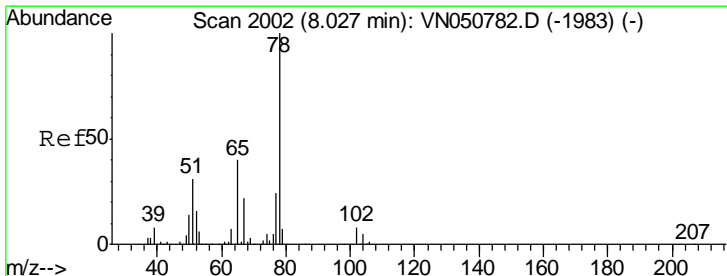
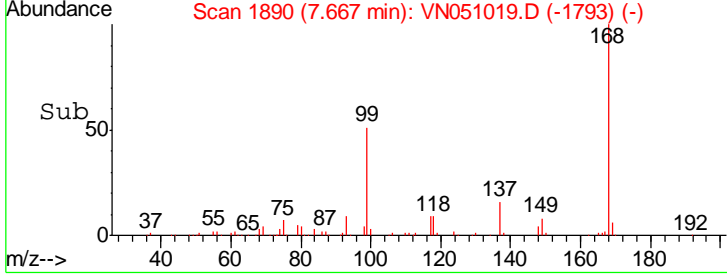
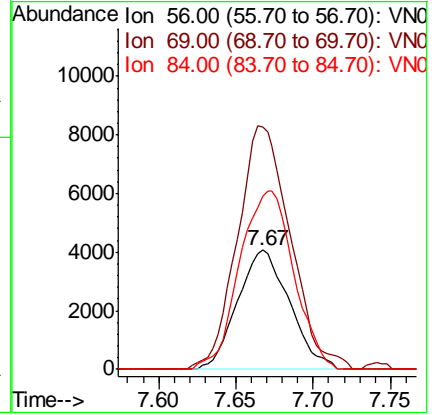
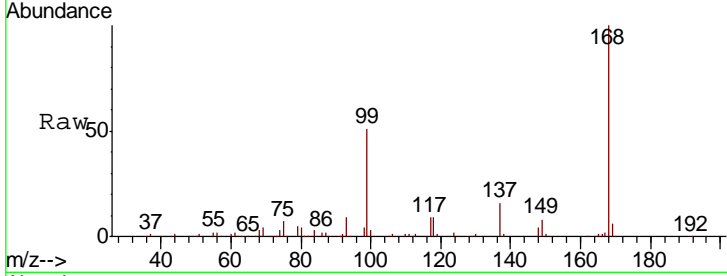




#31  
 Cyclohexane  
 Concen: 1.27 ug/l  
 RT: 7.67 min Scan# 1890  
 Delta R.T. 0.01 min  
 Lab File: VN051019.D  
 Acq: 4 Sep 2018 15:06

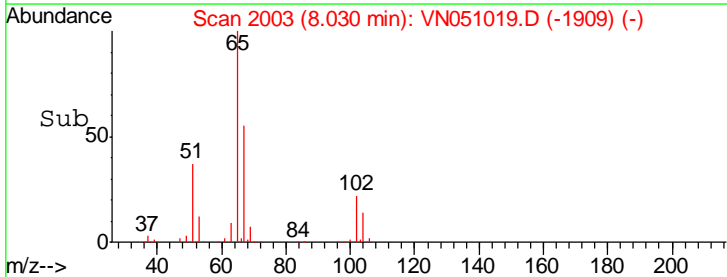
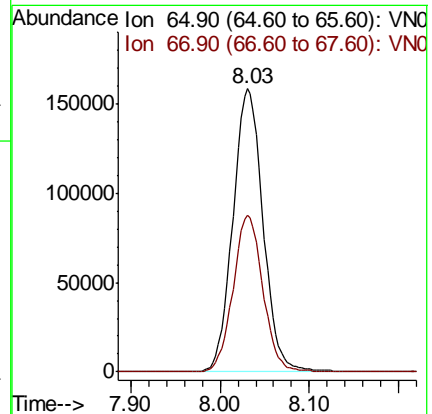
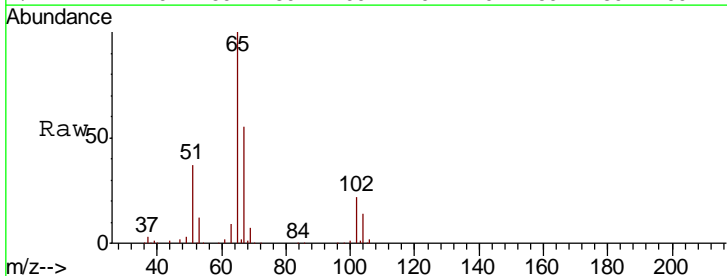
Instrument : MSVOA\_N  
 ClientSampled : PB112553ZHE#05

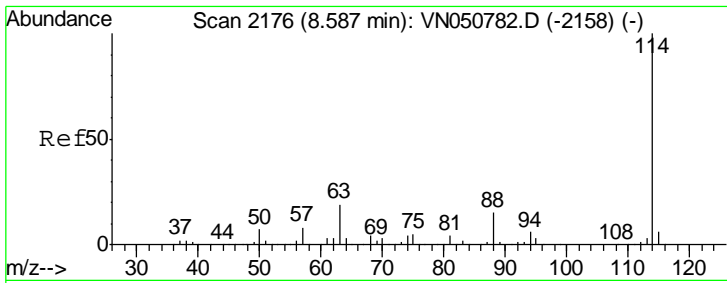
Tgt Ion	Resp	Lower	Upper
56	100		
69	199.6	26.2	39.4#
84	144.9	68.3	102.5#



#33  
 1,2-Dichloroethane-d4  
 Concen: 54.19 ug/l  
 RT: 8.03 min Scan# 2003  
 Delta R.T. 0.00 min  
 Lab File: VN051019.D  
 Acq: 4 Sep 2018 15:06

Tgt Ion	Resp	Lower	Upper
65	100		
67	54.6	0.0	110.4

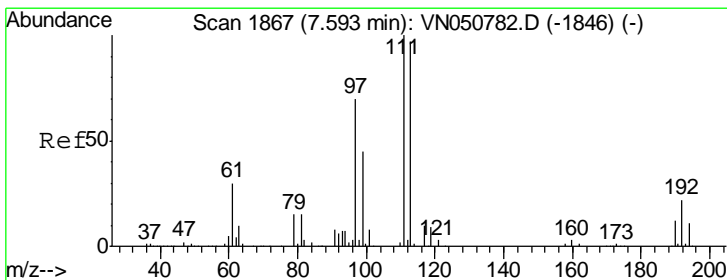
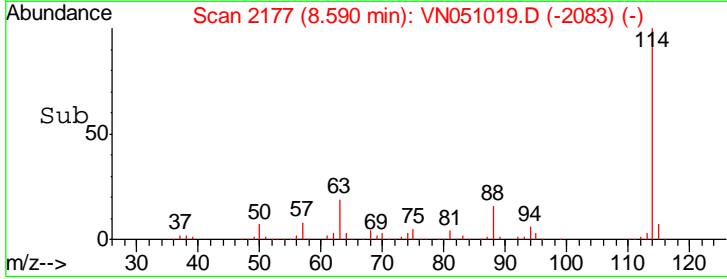
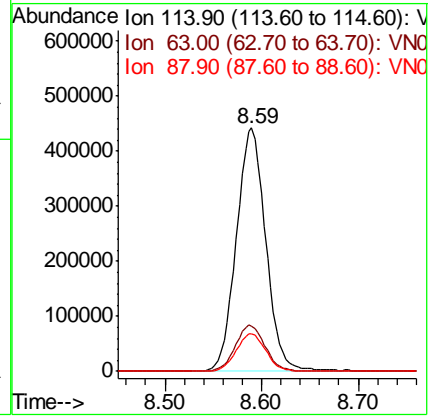
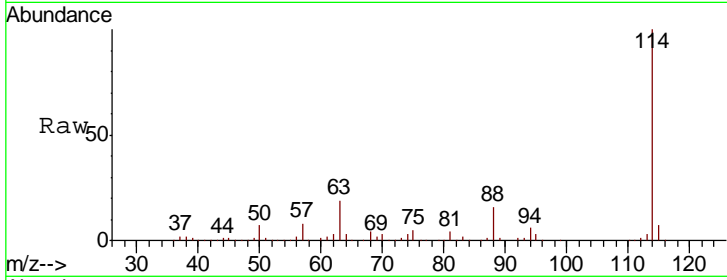




#34  
 1,4-Difluorobenzene  
 Concen: 50.00 ug/l  
 RT: 8.59 min Scan# 2177  
 Delta R.T. 0.00 min  
 Lab File: VN051019.D  
 Acq: 4 Sep 2018 15:06

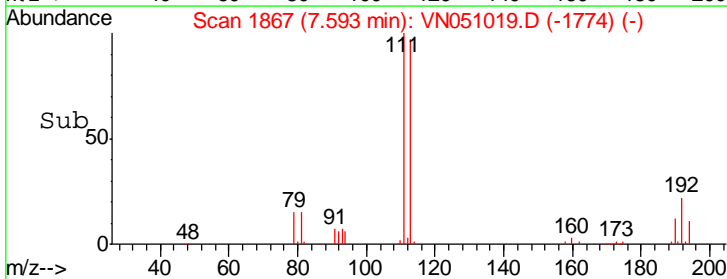
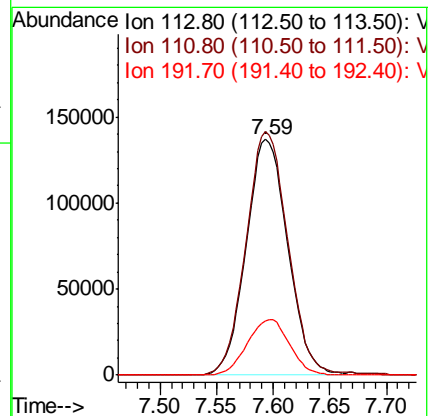
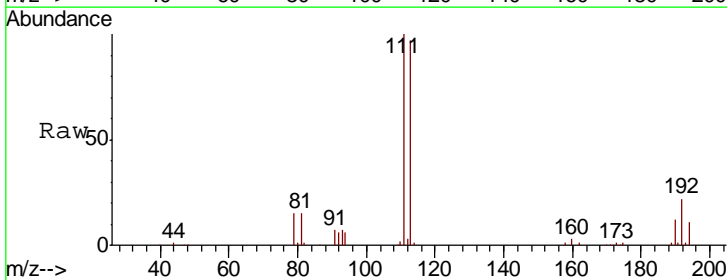
Instrument : MSVOA\_N  
 ClientSampleId : PB112553ZHE#05

Tgt Ion	Resp	Lower	Upper
114	933814		
63	18.7	0.0	38.6
88	15.6	0.0	30.6

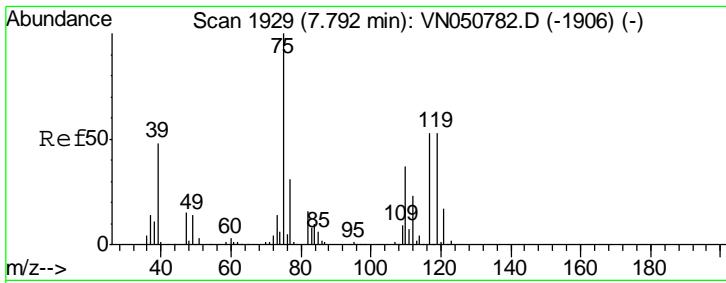


#35  
 Dibromofluoromethane  
 Concen: 47.27 ug/l  
 RT: 7.59 min Scan# 1867  
 Delta R.T. 0.00 min  
 Lab File: VN051019.D  
 Acq: 4 Sep 2018 15:06

Tgt Ion	Resp	Lower	Upper
113	351157		
111	104.4	82.6	123.8
192	23.9	18.0	27.0



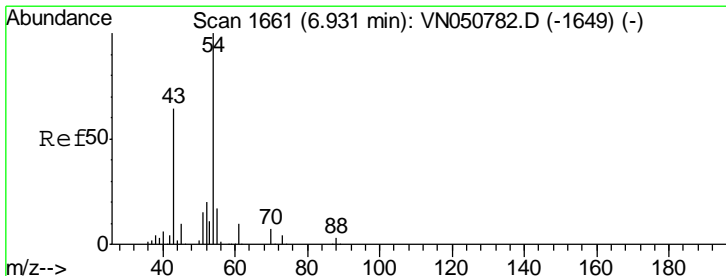
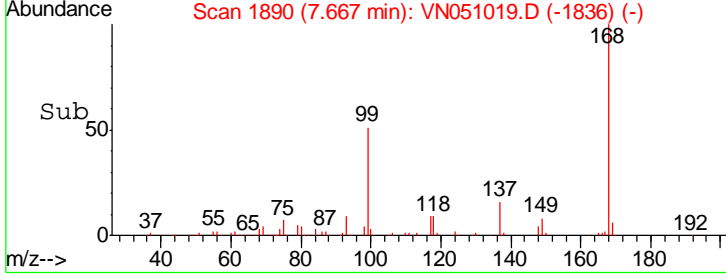
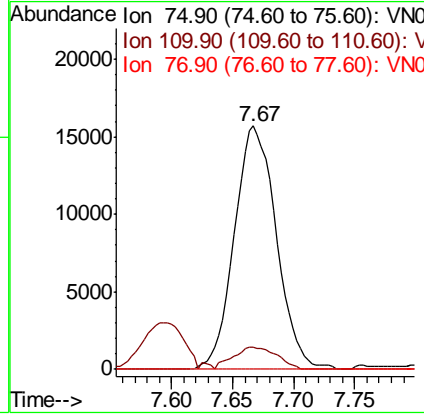
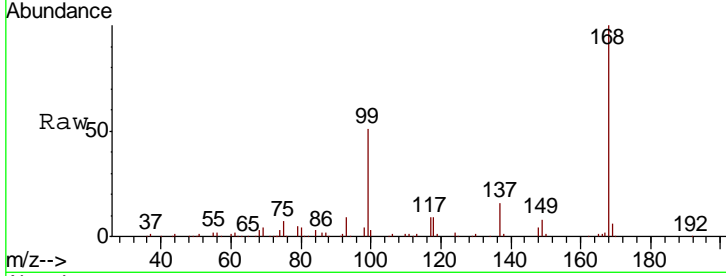




#36  
 1,1-Dichloropropene  
 Concen: 3.40 ug/l  
 RT: 7.67 min Scan# 1890  
 Delta R.T. -0.13 min  
 Lab File: VN051019.D  
 Acq: 4 Sep 2018 15:06

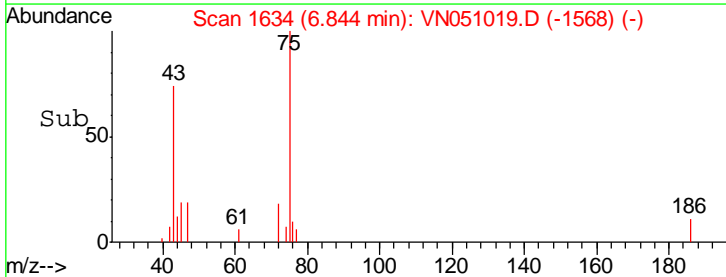
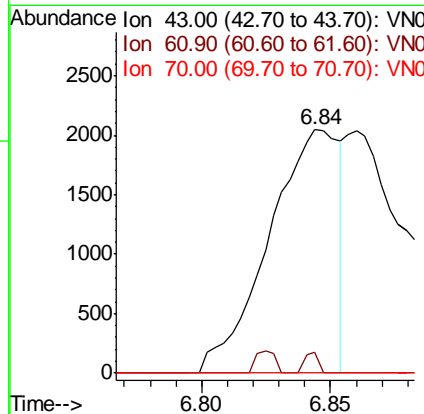
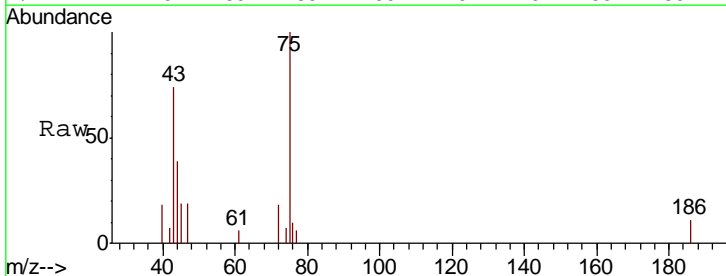
Instrument : MSVOA\_N  
 ClientSampleId : PB112553ZHE#05

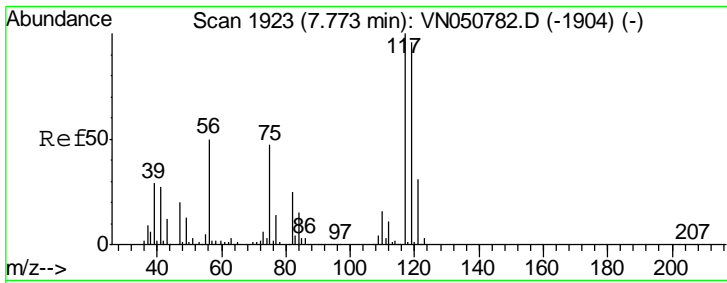
Tgt Ion	Resp	Lower	Upper
75	37413		
110	9.5	18.1	54.4#
77	0.0	24.8	37.2#



#37  
 Ethyl Acetate  
 Concen: 0.61 ug/l  
 RT: 6.84 min Scan# 1634  
 Delta R.T. -0.09 min  
 Lab File: VN051019.D  
 Acq: 4 Sep 2018 15:06

Tgt Ion	Resp	Lower	Upper
43	3891		
61	1.6	12.0	18.0#
70	0.0	8.6	13.0#

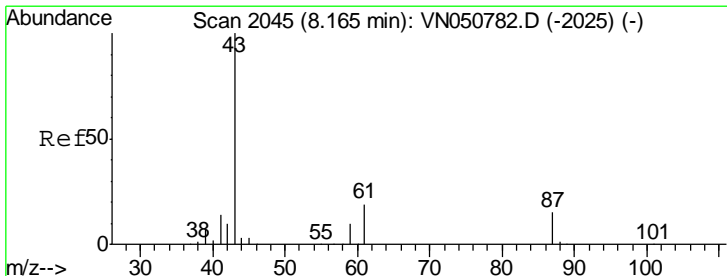
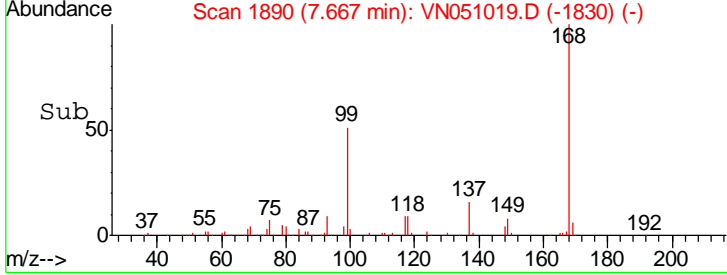
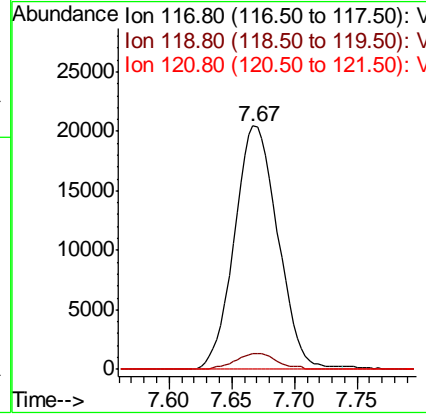
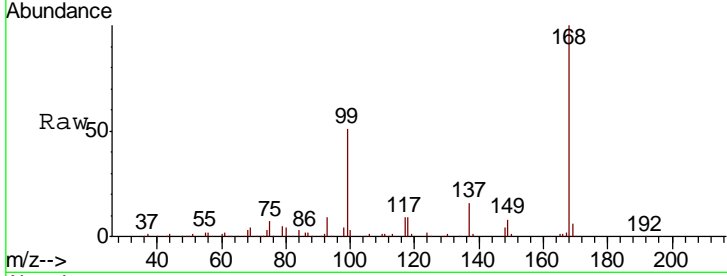




#38  
 Carbon Tetrachloride  
 Concen: 4.42 ug/l  
 RT: 7.67 min Scan# 1890  
 Delta R.T. -0.11 min  
 Lab File: VN051019.D  
 Acq: 4 Sep 2018 15:06

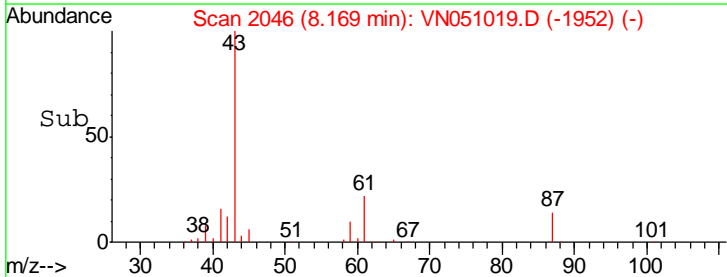
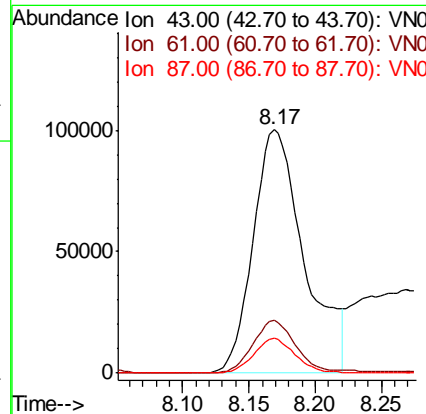
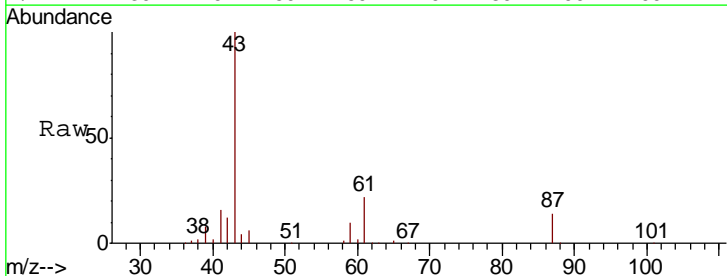
Instrument : MSVOA\_N  
 ClientSampled : PB112553ZHE#05

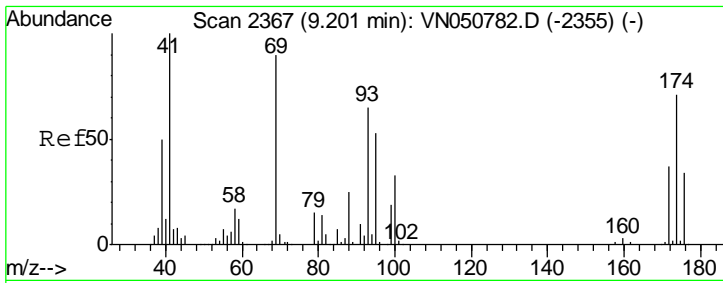
Tgt Ion	Resp	Lower	Upper
117	100		
119	6.3	76.3	114.5#
121	0.0	24.6	36.8#



#43  
 Isopropyl Acetate  
 Concen: 24.77 ug/l  
 RT: 8.17 min Scan# 2046  
 Delta R.T. 0.00 min  
 Lab File: VN051019.D  
 Acq: 4 Sep 2018 15:06

Tgt Ion	Resp	Lower	Upper
43	100		
61	18.8	17.5	26.3
87	11.5	11.3	16.9

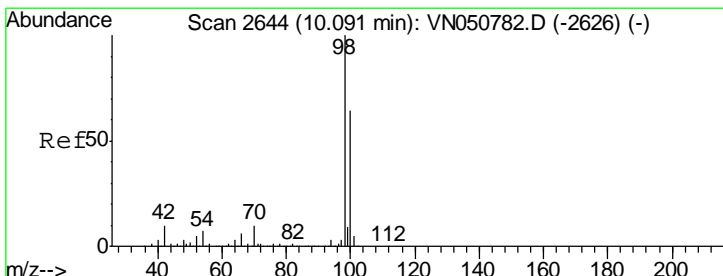
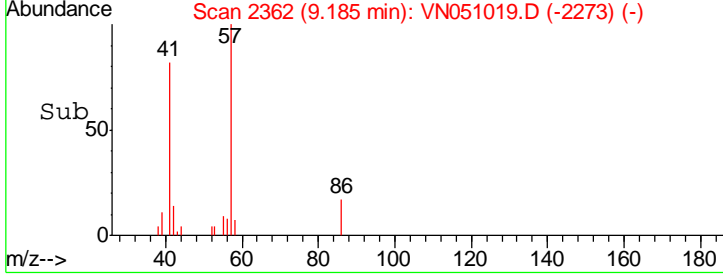
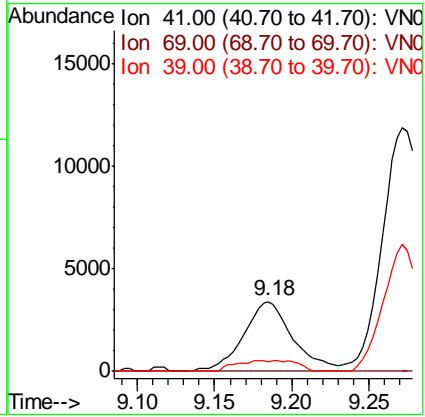
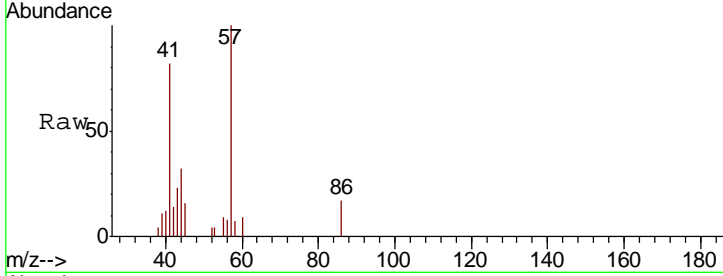




#48  
 Methyl methacrylate  
 Concen: 1.37 ug/l  
 RT: 9.18 min Scan# 2362  
 Delta R.T. -0.02 min  
 Lab File: VN051019.D  
 Acq: 4 Sep 2018 15:06

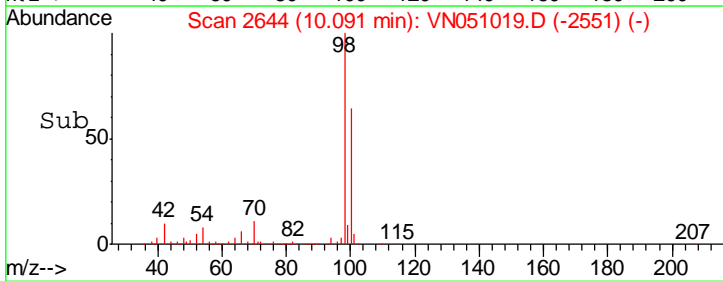
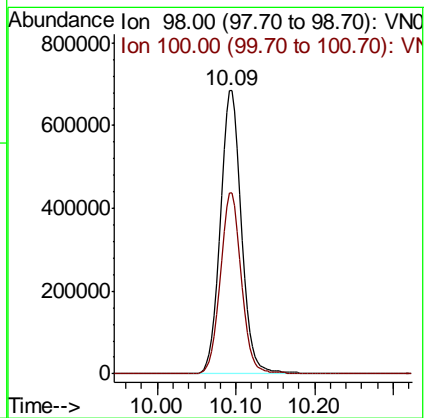
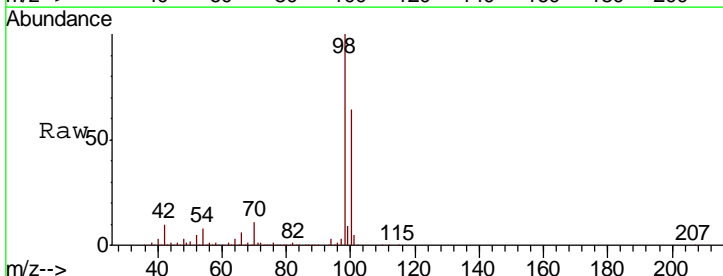
Instrument : MSVOA\_N  
 ClientSampled : PB112553ZHE#05

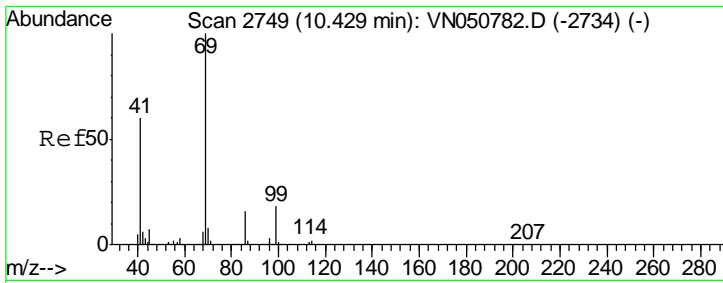
Tgt Ion	Resp	Lower	Upper
41	100		
69	0.0	74.7	112.1#
39	10.2	42.2	63.2#



#50  
 Toluene-d8  
 Concen: 45.43 ug/l  
 RT: 10.09 min Scan# 2644  
 Delta R.T. 0.00 min  
 Lab File: VN051019.D  
 Acq: 4 Sep 2018 15:06

Tgt Ion	Resp	Lower	Upper
98	100		
100	63.9	51.5	77.3

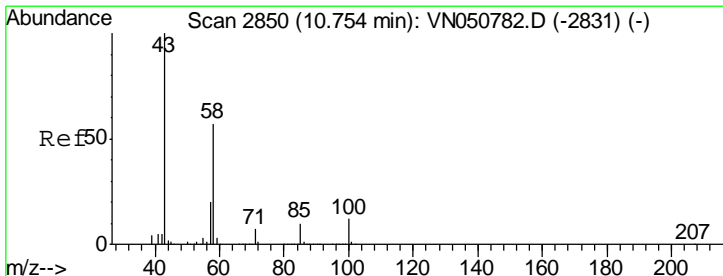
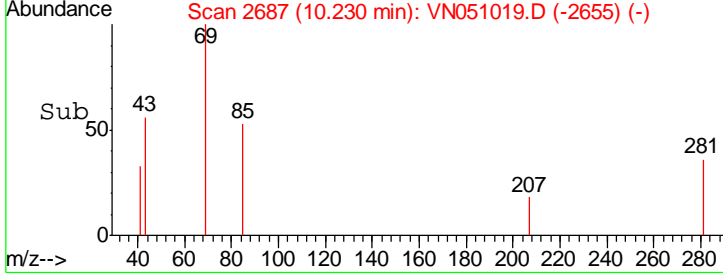
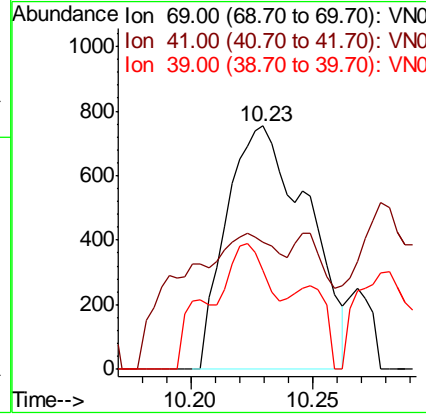
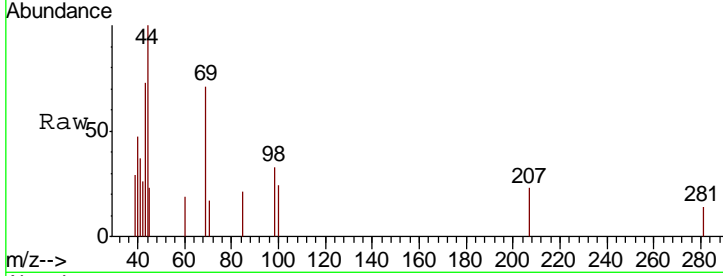




#56  
 Ethyl methacrylate  
 Concen: 2.52 ug/l  
 RT: 10.23 min Scan# 2687  
 Delta R.T. -0.20 min  
 Lab File: VN051019.D  
 Acq: 4 Sep 2018 15:06

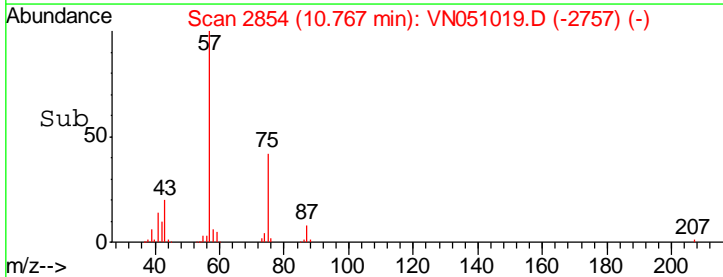
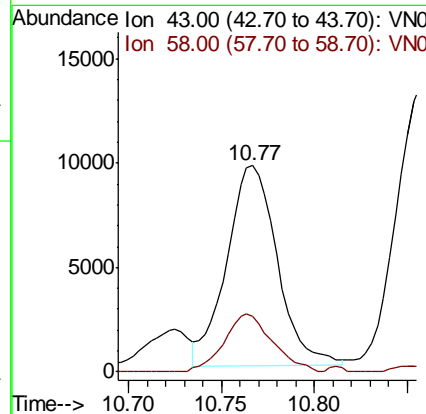
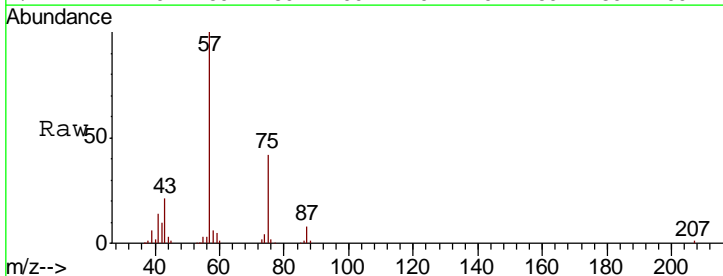
Instrument : MSVOA\_N  
 ClientSampled : PB112553ZHE#05

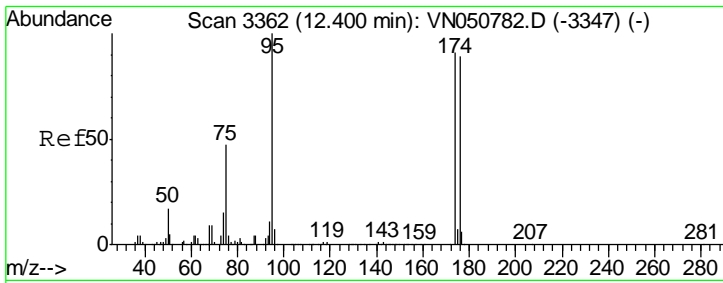
Tgt Ion	Resp	Lower	Upper
69	1744		
41	69.0	48.3	72.5
39	14.4	24.0	36.0



#59  
 2-Hexanone  
 Concen: 4.20 ug/l  
 RT: 10.77 min Scan# 2854  
 Delta R.T. 0.01 min  
 Lab File: VN051019.D  
 Acq: 4 Sep 2018 15:06

Tgt Ion	Resp	Lower	Upper
43	18159		
58	27.6	28.3	85.0

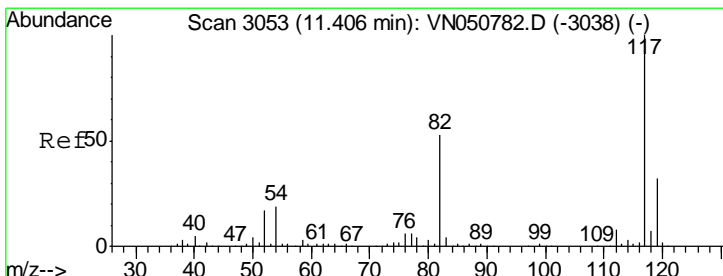
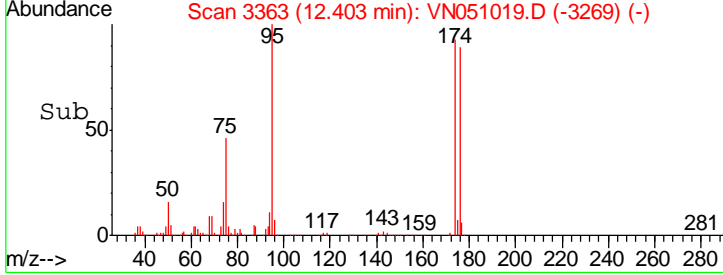
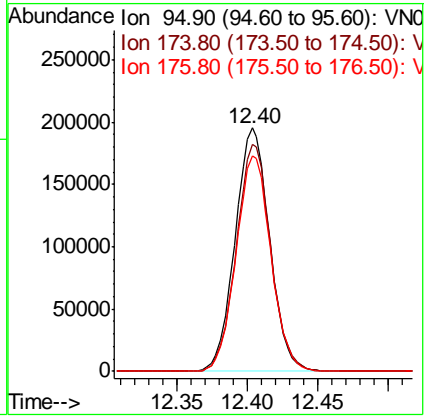
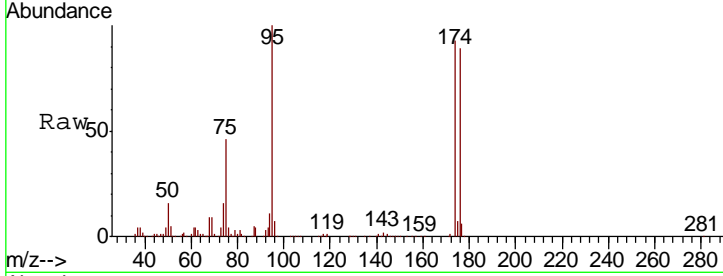




#62  
 4-Bromofluorobenzene  
 Concen: 36.15 ug/l  
 RT: 12.40 min Scan# 3363  
 Delta R.T. 0.00 min  
 Lab File: VN051019.D  
 Acq: 4 Sep 2018 15:06

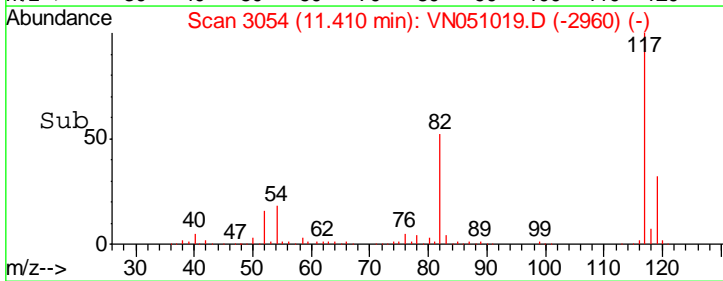
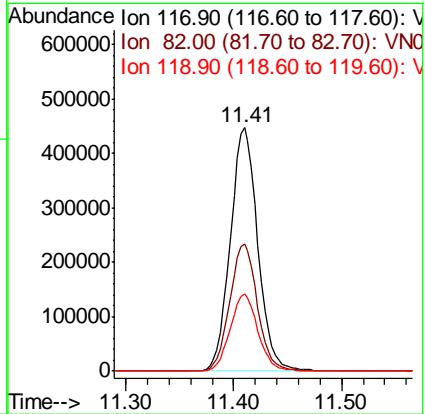
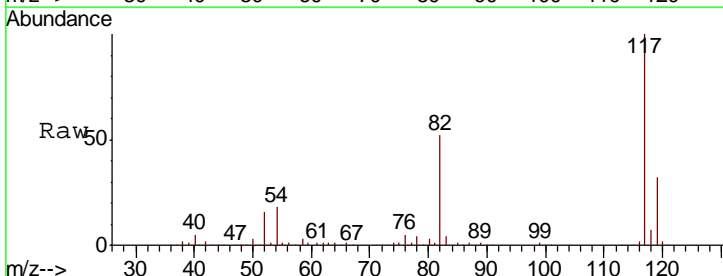
Instrument : MSVOA\_N  
 ClientSampled : PB112553ZHE#05

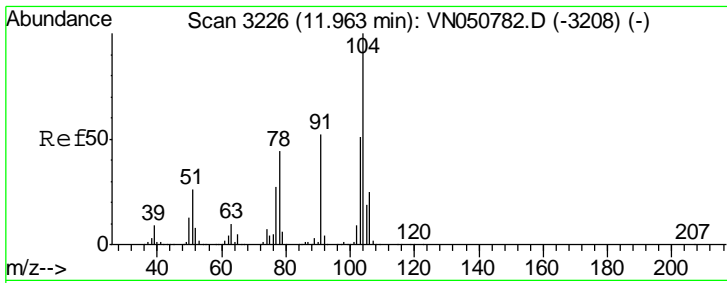
Tgt Ion	Resp	Lower	Upper
95	100		
174	93.7	0.0	183.0
176	89.6	0.0	178.8



#63  
 Chlorobenzene-d5  
 Concen: 50.00 ug/l  
 RT: 11.41 min Scan# 3054  
 Delta R.T. 0.00 min  
 Lab File: VN051019.D  
 Acq: 4 Sep 2018 15:06

Tgt Ion	Resp	Lower	Upper
117	100		
82	52.2	42.6	64.0
119	31.9	25.8	38.6

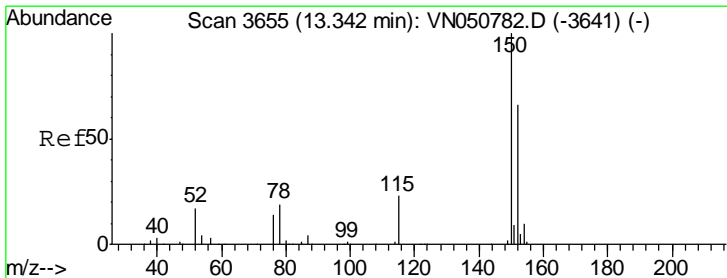
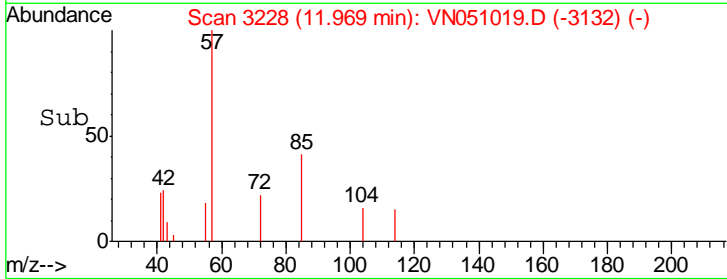
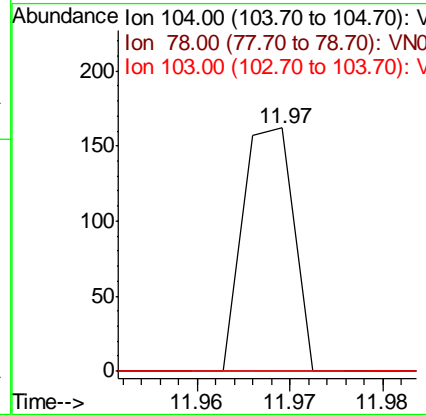
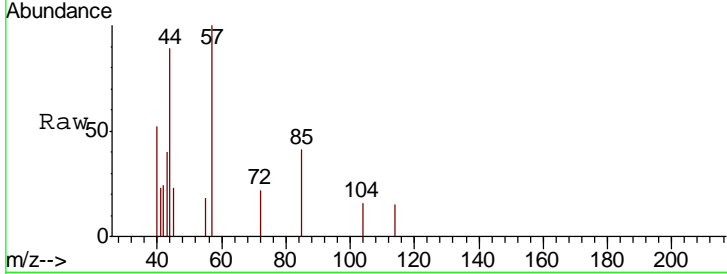




#70  
 Styrene  
 Concen: 1.27 ug/l  
 RT: 11.97 min Scan# 3228  
 Delta R.T. 0.01 min  
 Lab File: VN051019.D  
 Acq: 4 Sep 2018 15:06

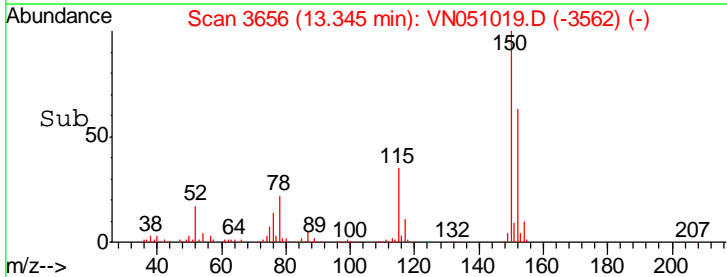
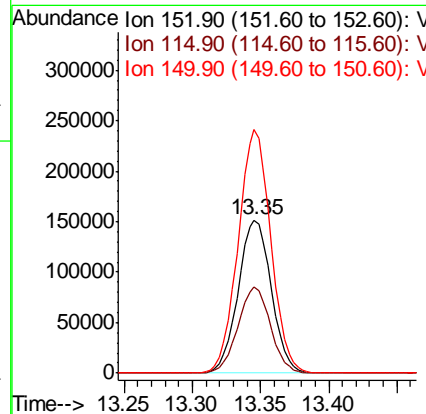
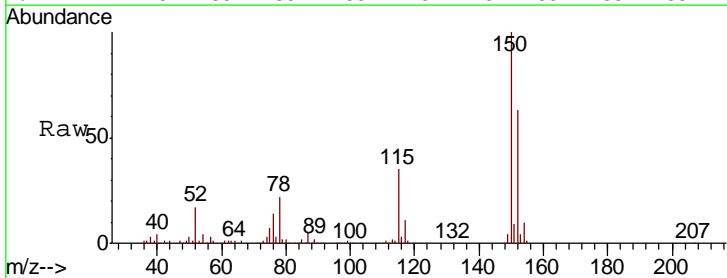
Instrument :  
 MSVOA\_N  
 ClientSampled :  
 PB112553ZHE#05

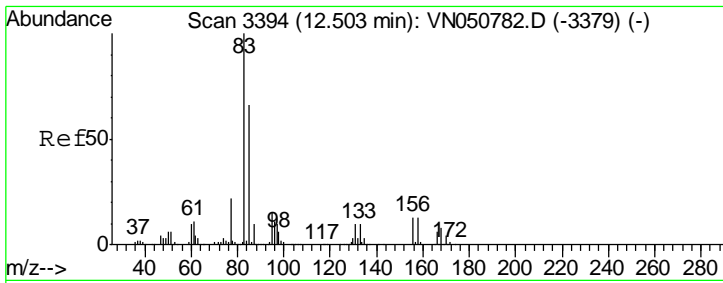
Tgt Ion	Resp	Lower	Upper
104	100		
78	0.0	38.2	57.4#
103	0.0	44.4	66.6#



#72  
 1,4-Dichlorobenzene-d4  
 Concen: 50.00 ug/l  
 RT: 13.35 min Scan# 3656  
 Delta R.T. 0.00 min  
 Lab File: VN051019.D  
 Acq: 4 Sep 2018 15:06

Tgt Ion	Resp	Lower	Upper
152	100		
115	55.2	27.8	83.4
150	156.4	0.0	351.4

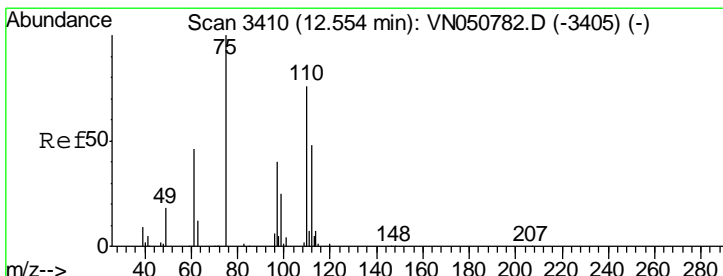
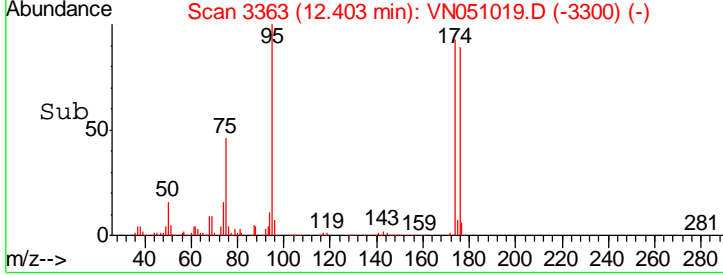
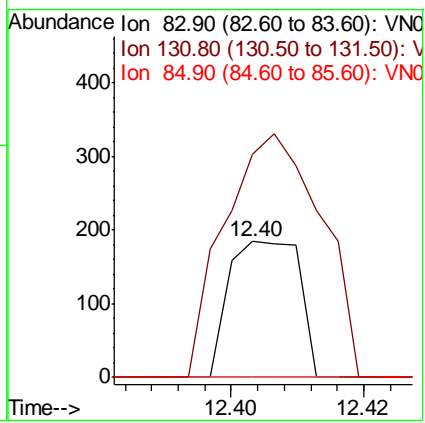
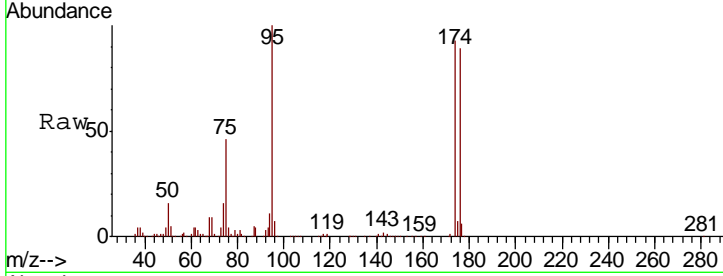




#75  
 1,1,2,2-Tetrachloroethane  
 Concen: Below Cal  
 RT: 12.40 min Scan# 3363  
 Delta R.T. -0.10 min  
 Lab File: VN051019.D  
 Acq: 4 Sep 2018 15:06

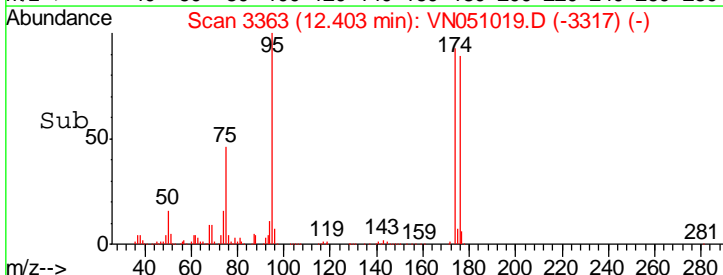
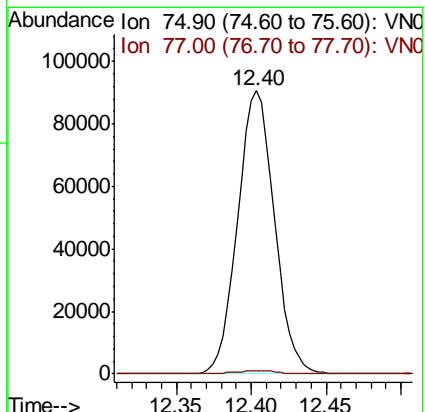
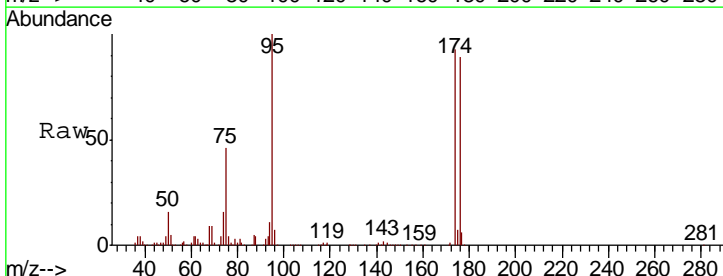
Instrument : MSVOA\_N  
 ClientSampled : PB112553ZHE#05

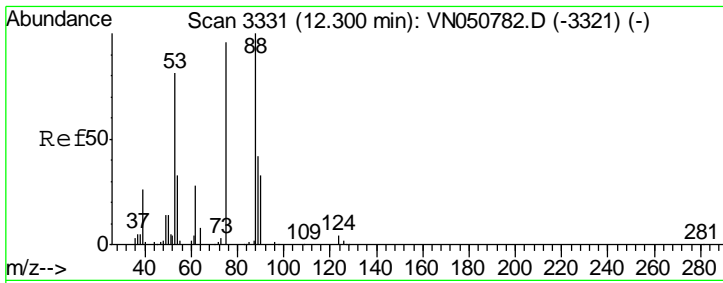
Tgt Ion	Resp	Lower	Upper
83	100		
131	245.6	5.3	15.9#
85	0.0	31.9	95.7#



#76  
 1,2,3-Trichloropropane  
 Concen: 34.60 ug/l  
 RT: 12.40 min Scan# 3363  
 Delta R.T. -0.15 min  
 Lab File: VN051019.D  
 Acq: 4 Sep 2018 15:06

Tgt Ion	Resp	Lower	Upper
75	100		
77	1.3	0.0	0.0#

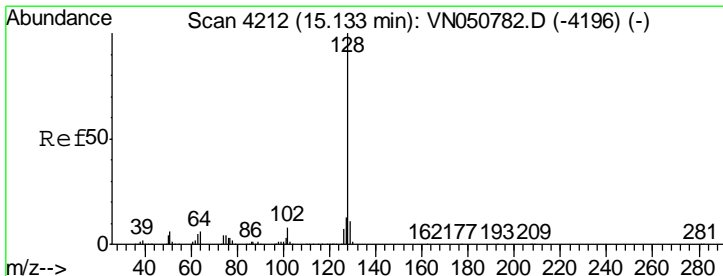
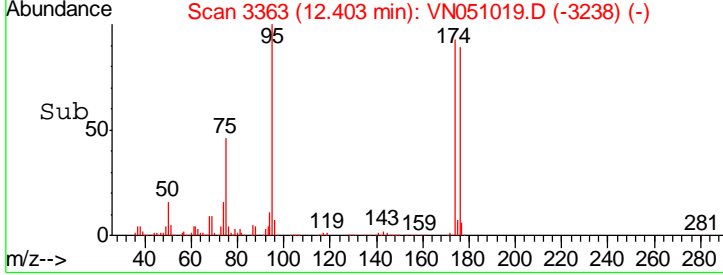
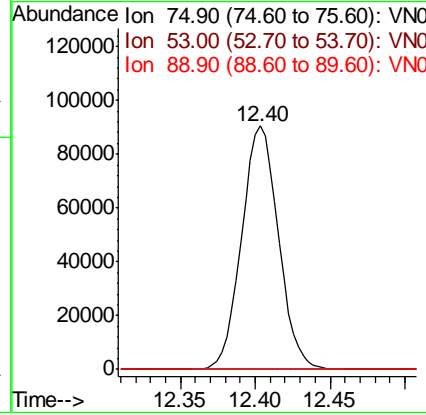
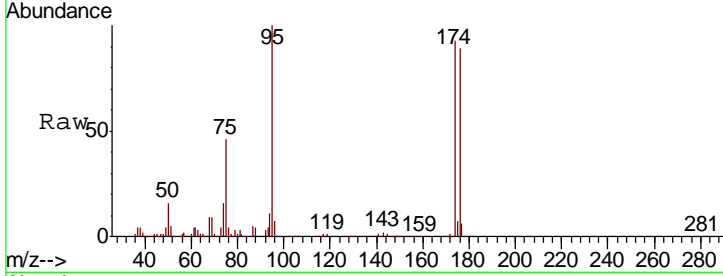




#81  
 trans-1,4-Dichloro-2-butene  
 Concen: 116.96 ug/l  
 RT: 12.40 min Scan# 3363  
 Delta R.T. 0.10 min  
 Lab File: VN051019.D  
 Acq: 4 Sep 2018 15:06

Instrument : MSVOA\_N  
 ClientSampled : PB112553ZHE#05

Tgt Ion	Resp	Lower	Upper
75	100		
53	0.1	68.9	103.3#
89	0.0	36.1	54.1#



#95  
 Naphthalene  
 Concen: 5.42 ug/l  
 RT: 15.14 min Scan# 4215  
 Delta R.T. 0.01 min  
 Lab File: VN051019.D  
 Acq: 4 Sep 2018 15:06

Tgt Ion	Resp	Lower	Upper
128	100		
127	0.0	10.5	15.7#
129	0.0	8.7	13.1#

