

Data Path : Z:\voasrv\HPCHEM1\MSVOA\_N\Data\VN090924\  
 Data File : VN083735.D  
 Acq On : 09 Sep 2024 22:36  
 Operator : JC\MD  
 Sample : P3868-02  
 Misc : 5.0mL/MSVOA\_N/WATER  
 ALS Vial : 33 Sample Multiplier: 1

Instrument :  
 MSVOA\_N  
 ClientSampleId :

Quant Time: Sep 10 02:19:56 2024  
 Quant Method : Z:\voasrv\HPCHEM1\MSVOA\_N\methods\82N083024W.M  
 Quant Title : SW846 8260  
 QLast Update : Sat Aug 31 00:48:10 2024  
 Response via : Initial Calibration

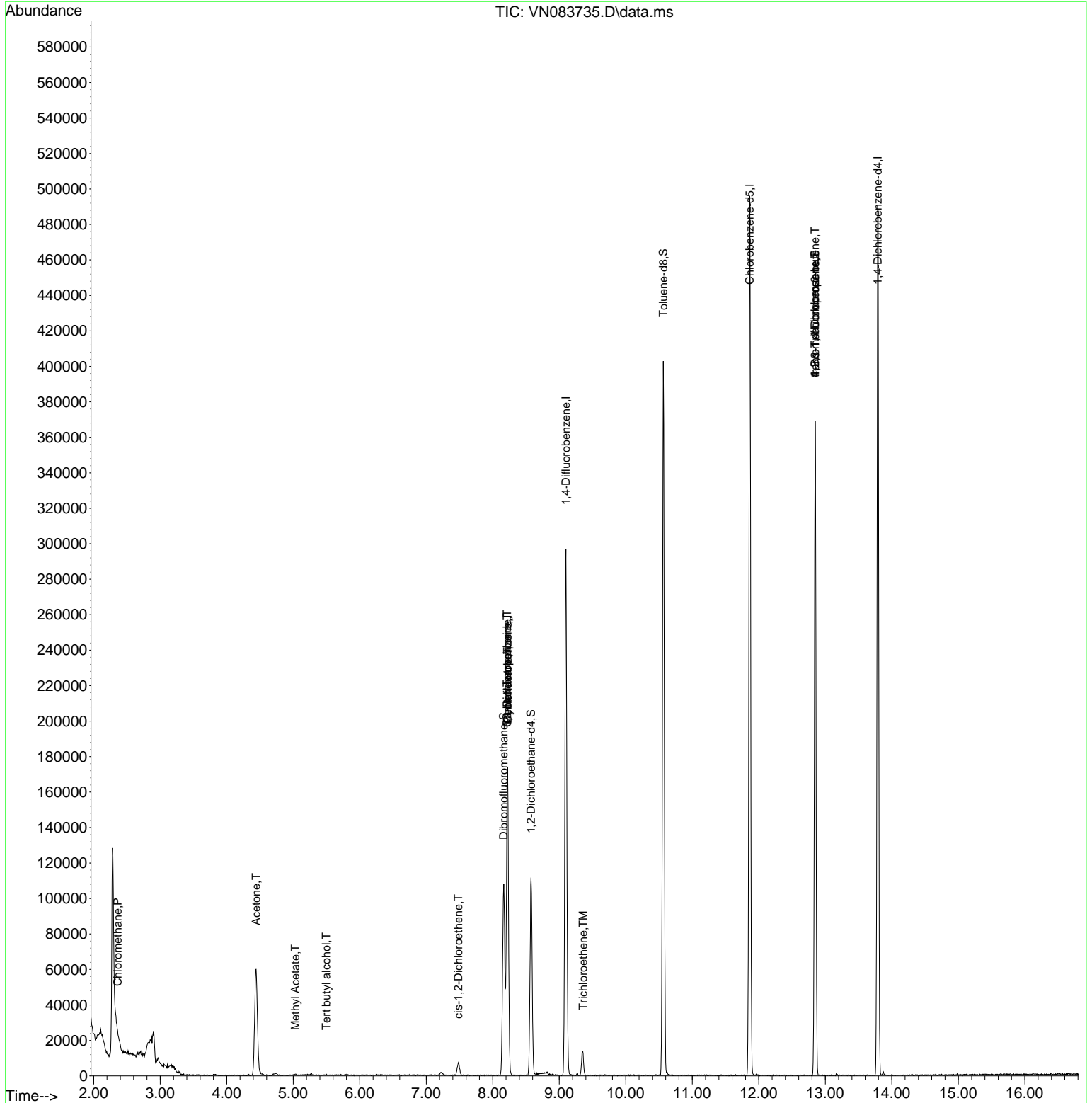
Compound	R.T.	QIon	Response	Conc	Units	Dev(Min)
-----						
Internal Standards						
1) Pentafluorobenzene	8.224	168	117617	50.000	ug/l	0.00
34) 1,4-Difluorobenzene	9.100	114	238981	50.000	ug/l	0.00
63) Chlorobenzene-d5	11.865	117	269062	50.000	ug/l	0.00
72) 1,4-Dichlorobenzene-d4	13.788	152	124989	50.000	ug/l	0.00
System Monitoring Compounds						
33) 1,2-Dichloroethane-d4	8.577	65	94932	57.751	ug/l	0.00
Spiked Amount	50.000	Range 74 - 125	Recovery	=	115.500%	
35) Dibromofluoromethane	8.165	113	76669	53.303	ug/l	0.00
Spiked Amount	50.000	Range 75 - 124	Recovery	=	106.600%	
50) Toluene-d8	10.565	98	270374	48.256	ug/l	0.00
Spiked Amount	50.000	Range 86 - 113	Recovery	=	96.520%	
62) 4-Bromofluorobenzene	12.847	95	124698	60.096	ug/l	0.00
Spiked Amount	50.000	Range 77 - 121	Recovery	=	120.200%	
Target Compounds						
						Qvalue
3) Chloromethane	2.359	50	1854	1.279	ug/l	88
11) Tert butyl alcohol	5.494	59	55	0.215	ug/l #	71
16) Acetone	4.442	43	1951	2.976	ug/l #	45
18) Methyl Acetate	5.030	43	703	0.403	ug/l #	52
27) cis-1,2-Dichloroethene	7.482	96	4287	2.677	ug/l	90
31) Cyclohexane	8.224	56	3357	1.320	ug/l #	32
36) 1,1-Dichloropropene	8.218	75	10752	4.901	ug/l #	51
38) Carbon Tetrachloride	8.218	117	13772	5.502	ug/l #	18
43) Isopropyl Acetate	8.688	43	199	Below Cal	#	57
44) Trichloroethene	9.359	130	5027	3.096	ug/l	83
76) 1,2,3-Trichloropropane	12.847	75	71804	28.454	ug/l #	1
81) trans-1,4-Dichloro-2-b...	12.847	75	71804	67.111	ug/l #	9
-----						

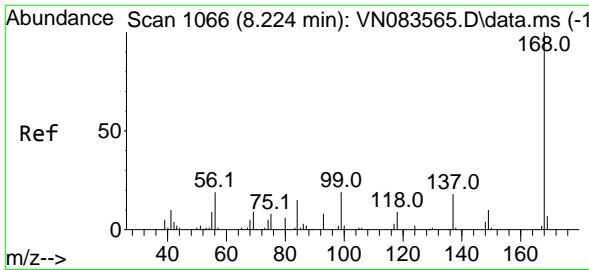
(#) = qualifier out of range (m) = manual integration (+) = signals summed

Data Path : Z:\voasrv\HPCHEM1\MSVOA\_N\Data\VN090924\  
 Data File : VN083735.D  
 Acq On : 09 Sep 2024 22:36  
 Operator : JC\MD  
 Sample : P3868-02  
 Misc : 5.0mL/MSVOA\_N/WATER  
 ALS Vial : 33 Sample Multiplier: 1

Instrument :  
 MSVOA\_N  
 ClientSampleId :

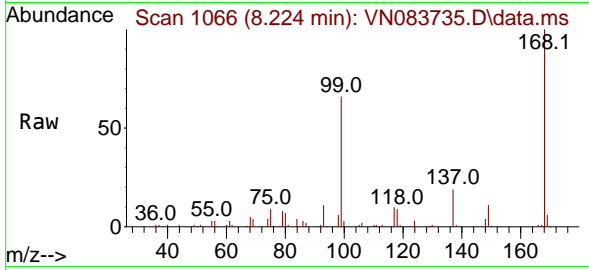
Quant Time: Sep 10 02:19:56 2024  
 Quant Method : Z:\voasrv\HPCHEM1\MSVOA\_N\methods\82N083024W.M  
 Quant Title : SW846 8260  
 QLast Update : Sat Aug 31 00:48:10 2024  
 Response via : Initial Calibration



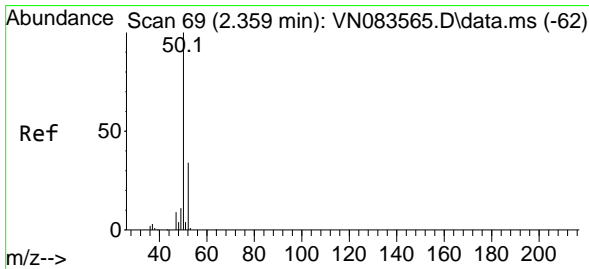
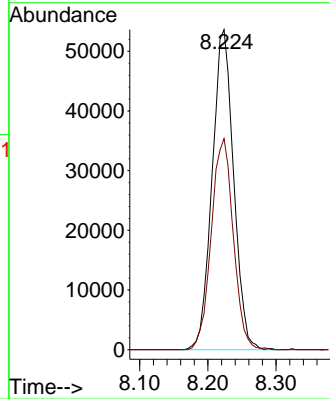
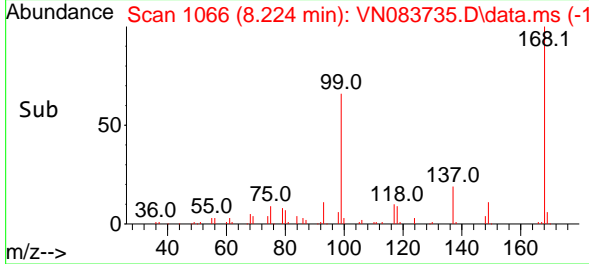


#1  
 Pentafluorobenzene  
 Concen: 50.000 ug/l  
 RT: 8.224 min Scan# 1066  
 Delta R.T. -0.000 min  
 Lab File: VN083735.D  
 Acq: 09 Sep 2024 22:36

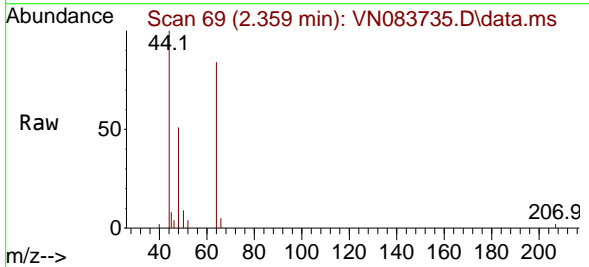
Instrument :  
 MSVOA\_N  
 ClientSampleId :



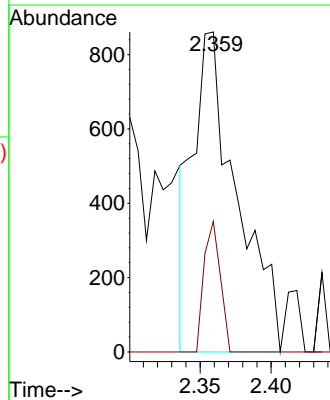
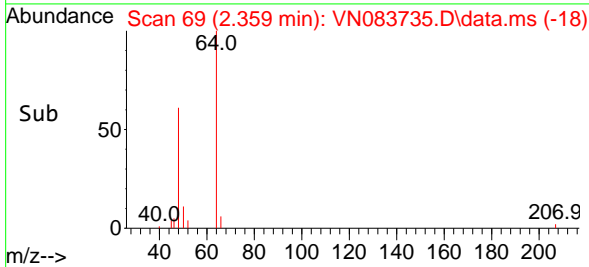
Tgt Ion:168 Resp: 117617  
 Ion Ratio Lower Upper  
 168 100  
 99 65.9 54.2 81.2

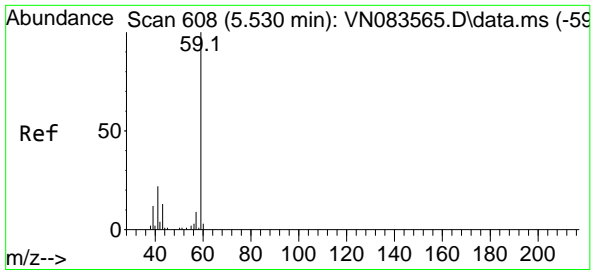


#3  
 Chloromethane  
 Concen: 1.279 ug/l  
 RT: 2.359 min Scan# 69  
 Delta R.T. -0.000 min  
 Lab File: VN083735.D  
 Acq: 09 Sep 2024 22:36



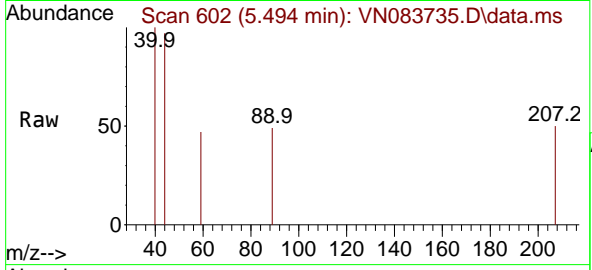
Tgt Ion: 50 Resp: 1854  
 Ion Ratio Lower Upper  
 50 100  
 52 40.8 27.2 40.8



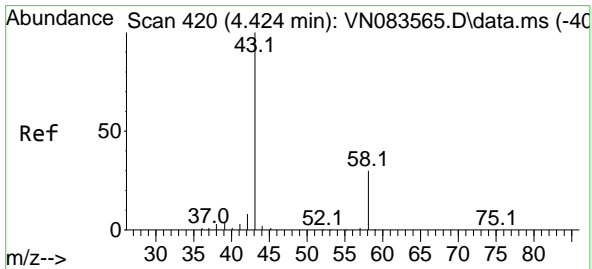
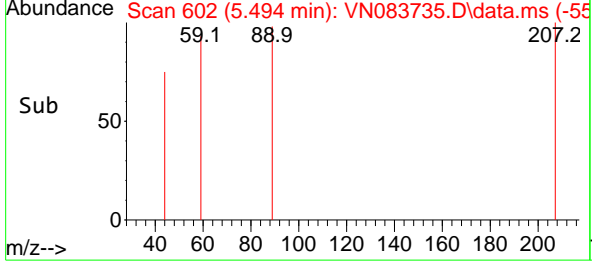
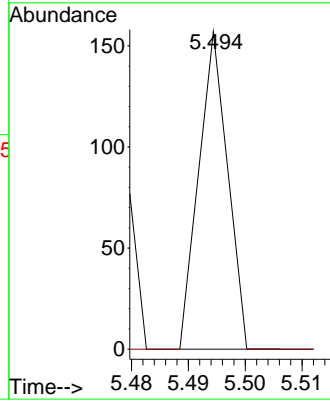


#11  
 Tert butyl alcohol  
 Concen: 0.215 ug/l  
 RT: 5.494 min Scan# 602  
 Delta R.T. -0.035 min  
 Lab File: VN083735.D  
 Acq: 09 Sep 2024 22:36

Instrument : MSVOA\_N  
 ClientSampleId :

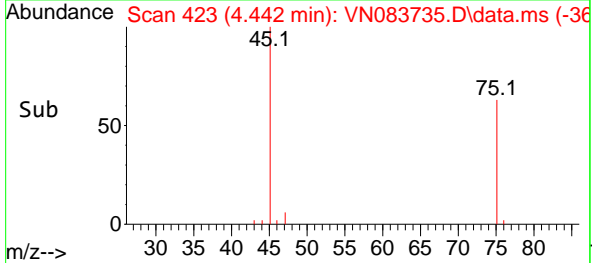
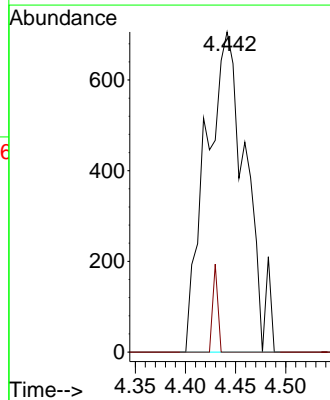
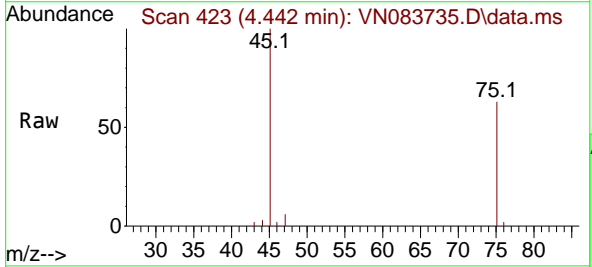


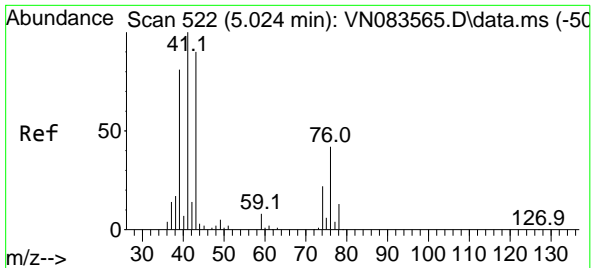
Tgt Ion: 59 Resp: 55  
 Ion Ratio Lower Upper  
 59 100  
 57 0.0 8.7 13.1#



#16  
 Acetone  
 Concen: 2.976 ug/l  
 RT: 4.442 min Scan# 423  
 Delta R.T. 0.018 min  
 Lab File: VN083735.D  
 Acq: 09 Sep 2024 22:36

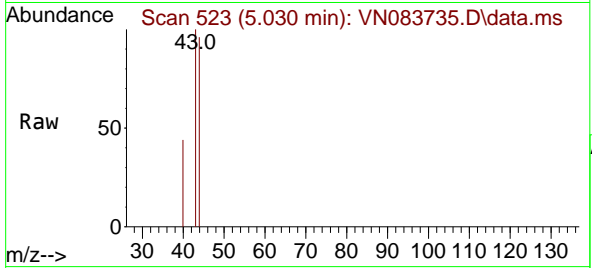
Tgt Ion: 43 Resp: 1951  
 Ion Ratio Lower Upper  
 43 100  
 58 0.0 23.7 35.5#



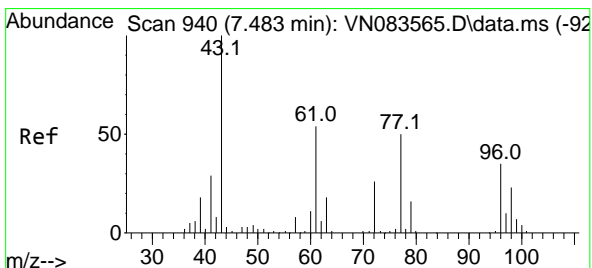
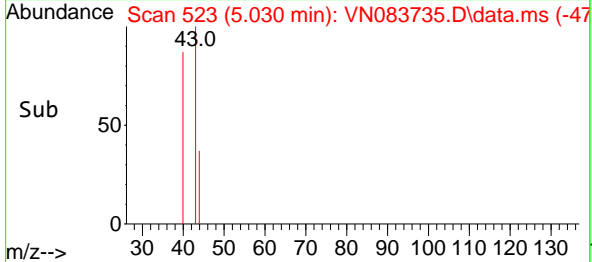
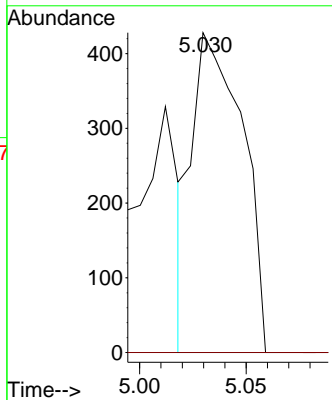


#18  
 Methyl Acetate  
 Concen: 0.403 ug/l  
 RT: 5.030 min Scan# 51  
 Delta R.T. 0.006 min  
 Lab File: VN083735.D  
 Acq: 09 Sep 2024 22:36

Instrument :  
 MSVOA\_N  
 ClientSampleId :

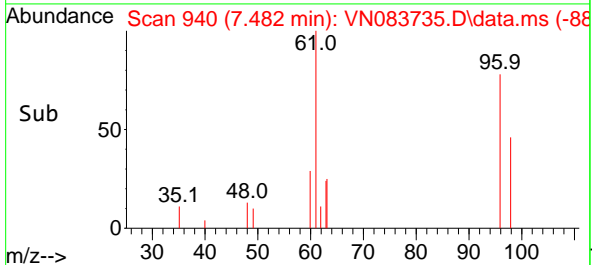
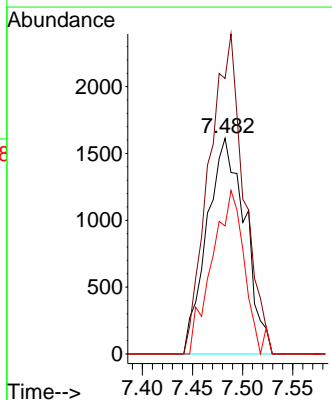
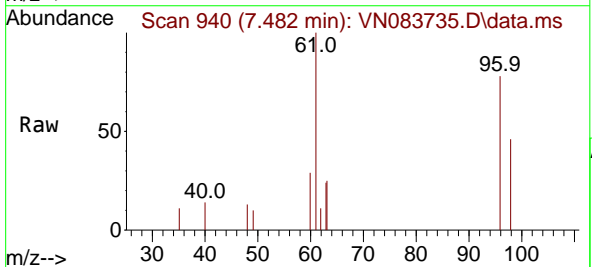


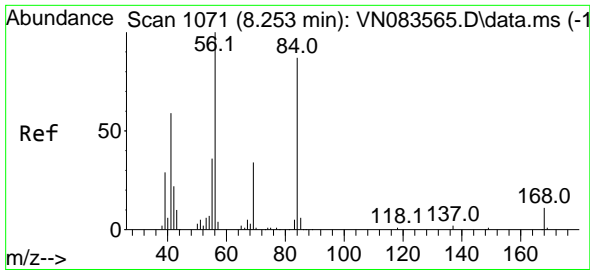
Tgt Ion: 43 Resp: 703  
 Ion Ratio Lower Upper  
 43 100  
 74 0.0 19.0 28.4#



#27  
 cis-1,2-Dichloroethene  
 Concen: 2.677 ug/l  
 RT: 7.482 min Scan# 940  
 Delta R.T. -0.000 min  
 Lab File: VN083735.D  
 Acq: 09 Sep 2024 22:36

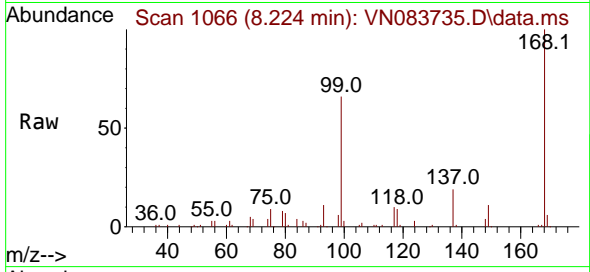
Tgt Ion: 96 Resp: 4287  
 Ion Ratio Lower Upper  
 96 100  
 61 134.9 0.0 306.2  
 98 64.3 0.0 128.6



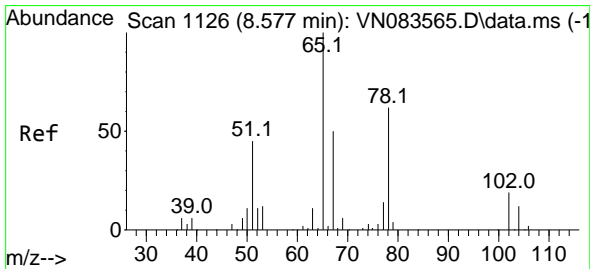
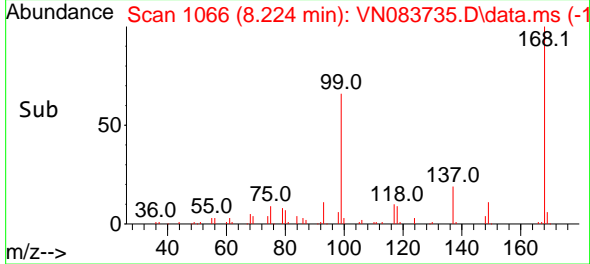
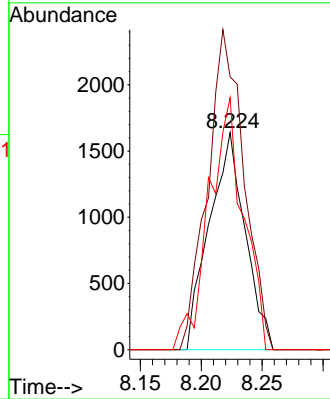


#31  
 Cyclohexane  
 Concen: 1.320 ug/l  
 RT: 8.224 min Scan# 1066  
 Delta R.T. -0.029 min  
 Lab File: VN083735.D  
 Acq: 09 Sep 2024 22:36

Instrument :  
 MSVOA\_N  
 ClientSampleId :

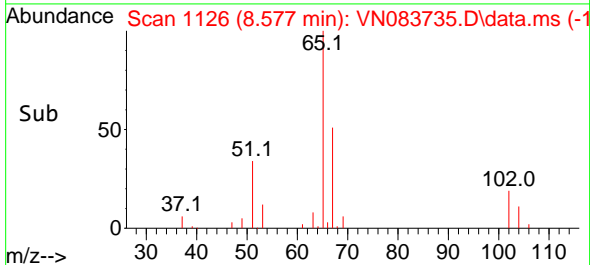
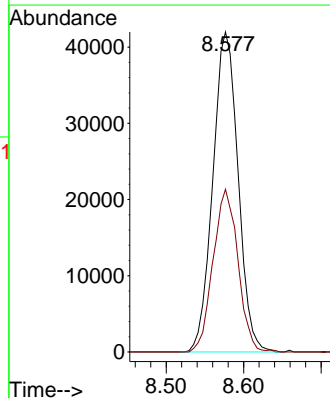
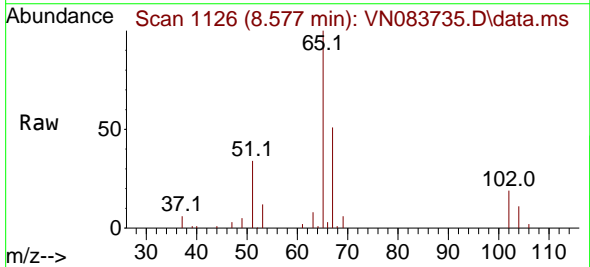


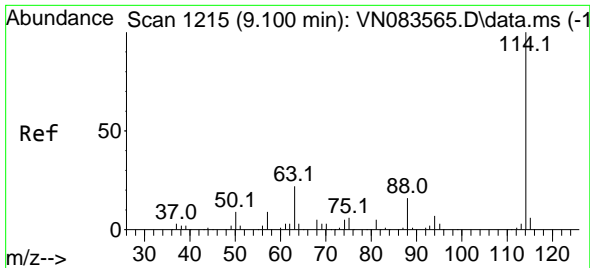
Tgt Ion: 56 Resp: 3357  
 Ion Ratio Lower Upper  
 56 100  
 69 125.7 26.9 40.3#  
 84 116.0 69.2 103.8#



#33  
 1,2-Dichloroethane-d4  
 Concen: 57.751 ug/l  
 RT: 8.577 min Scan# 1126  
 Delta R.T. -0.000 min  
 Lab File: VN083735.D  
 Acq: 09 Sep 2024 22:36

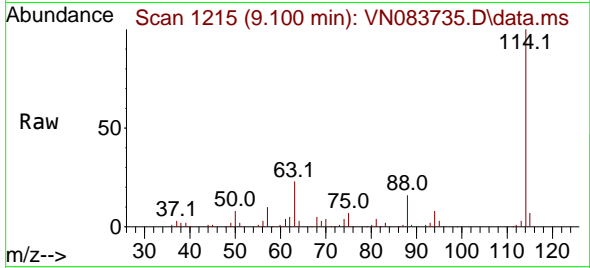
Tgt Ion: 65 Resp: 94932  
 Ion Ratio Lower Upper  
 65 100  
 67 50.1 0.0 100.8



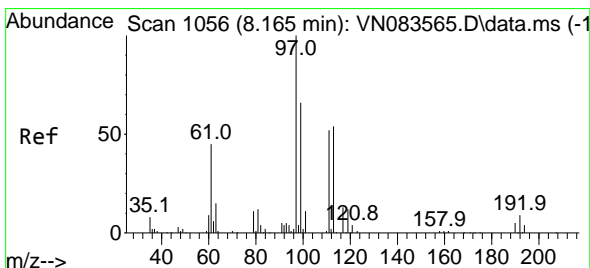
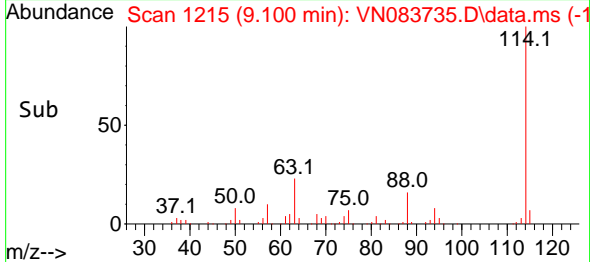
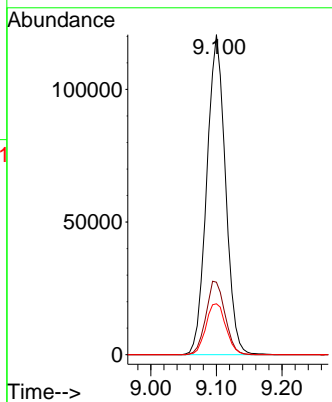


#34  
 1,4-Difluorobenzene  
 Concen: 50.000 ug/l  
 RT: 9.100 min Scan# 11  
 Delta R.T. -0.000 min  
 Lab File: VN083735.D  
 Acq: 09 Sep 2024 22:36

Instrument :  
 MSVOA\_N  
 ClientSampleId :

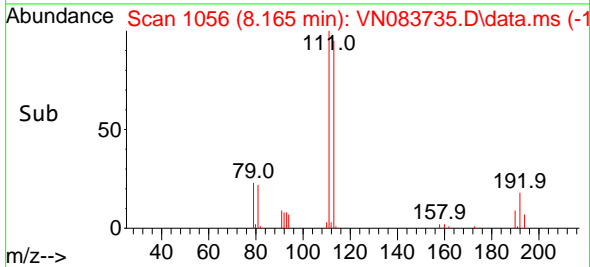
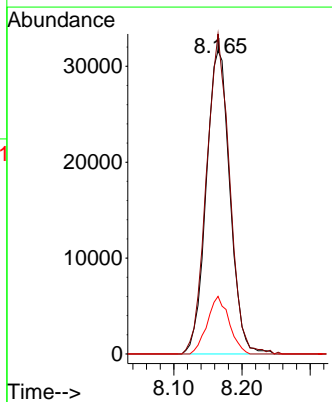
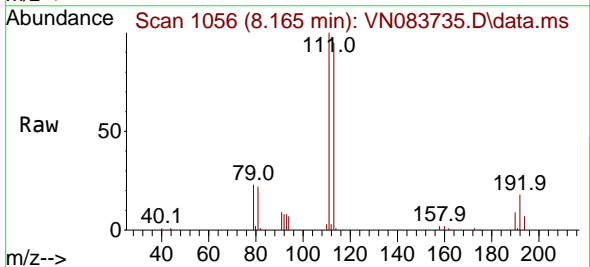


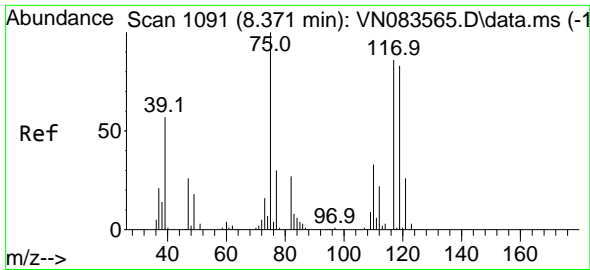
Tgt Ion:114 Resp: 238981  
 Ion Ratio Lower Upper  
 114 100  
 63 22.7 0.0 43.4  
 88 15.9 0.0 32.6



#35  
 Dibromofluoromethane  
 Concen: 53.303 ug/l  
 RT: 8.165 min Scan# 1056  
 Delta R.T. -0.000 min  
 Lab File: VN083735.D  
 Acq: 09 Sep 2024 22:36

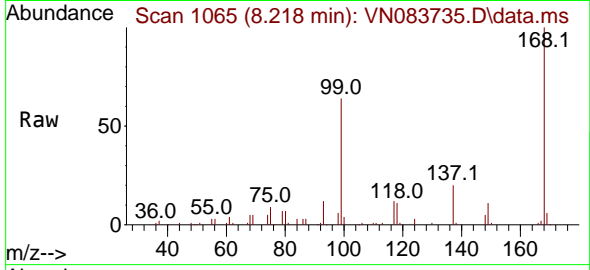
Tgt Ion:113 Resp: 76669  
 Ion Ratio Lower Upper  
 113 100  
 111 102.8 82.6 124.0  
 192 17.5 14.3 21.5



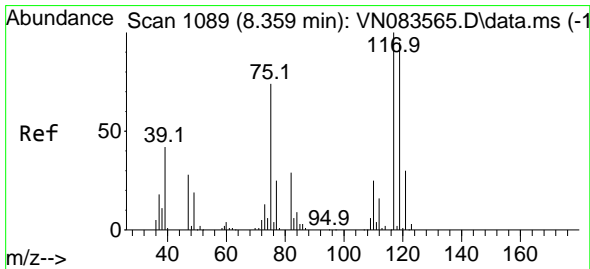
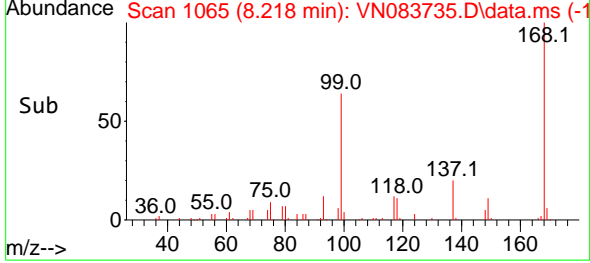
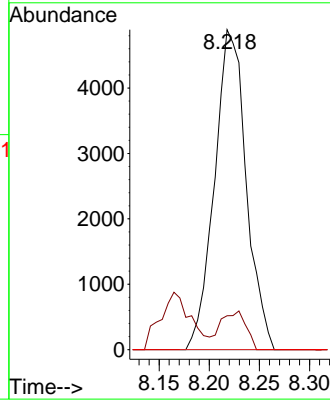


#36  
 1,1-Dichloropropene  
 Concen: 4.901 ug/l  
 RT: 8.218 min Scan# 1065  
 Delta R.T. -0.153 min  
 Lab File: VN083735.D  
 Acq: 09 Sep 2024 22:36

Instrument : MSVOA\_N  
 ClientSampleId :

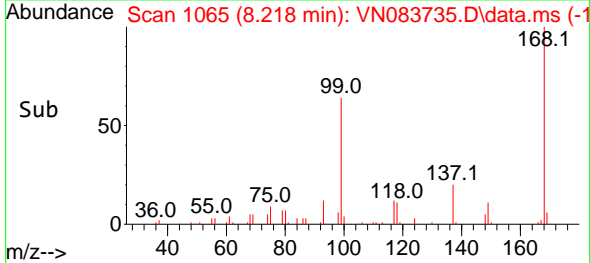
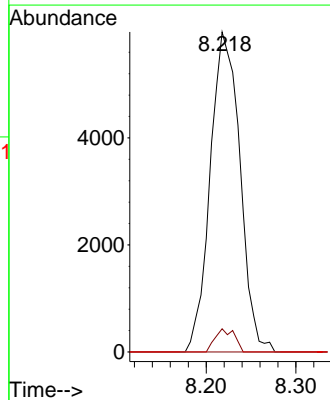
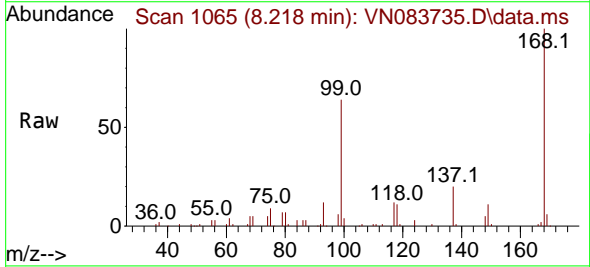


Tgt Ion: 75 Resp: 10752  
 Ion Ratio Lower Upper  
 75 100  
 110 9.7 16.7 50.1#  
 77 0.0 25.2 37.8#

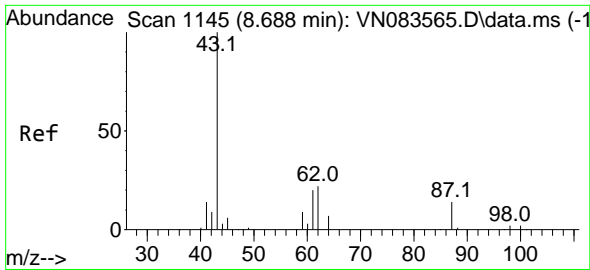


#38  
 Carbon Tetrachloride  
 Concen: 5.502 ug/l  
 RT: 8.218 min Scan# 1065  
 Delta R.T. -0.141 min  
 Lab File: VN083735.D  
 Acq: 09 Sep 2024 22:36

Tgt Ion: 117 Resp: 13772  
 Ion Ratio Lower Upper  
 117 100  
 119 7.3 76.1 114.1#  
 121 0.0 24.1 36.1#

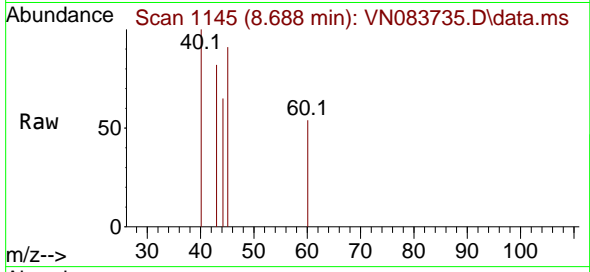




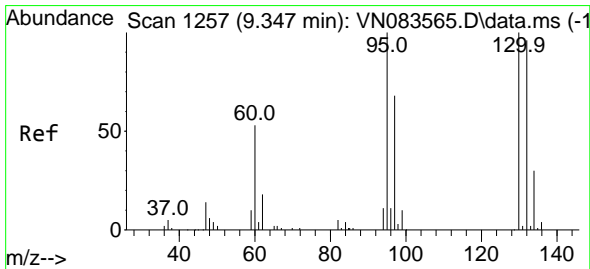
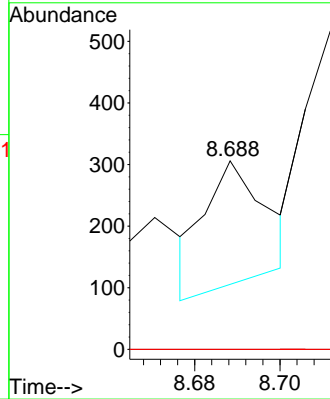
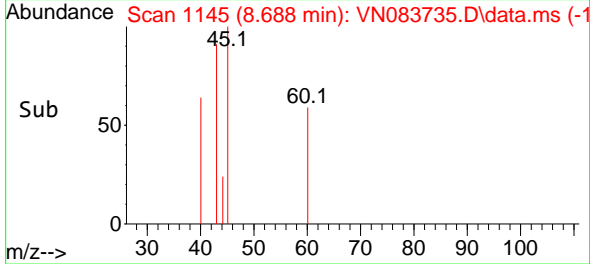


#43  
 Isopropyl Acetate  
 Concen: Below Cal  
 RT: 8.688 min Scan# 1145  
 Delta R.T. 0.000 min  
 Lab File: VN083735.D  
 Acq: 09 Sep 2024 22:36

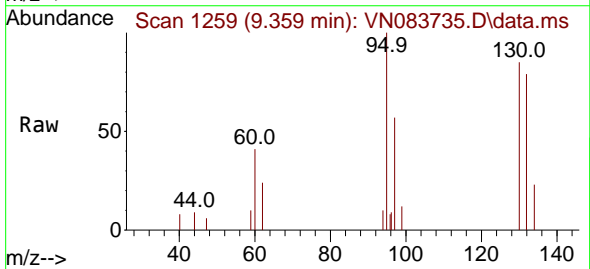
Instrument :  
 MSVOA\_N  
 ClientSampleId :



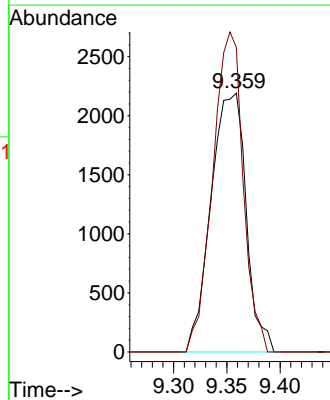
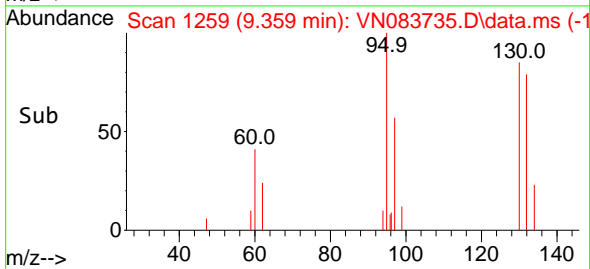
Tgt Ion: 43 Resp: 199  
 Ion Ratio Lower Upper  
 43 100  
 61 0.0 19.4 29.0#  
 87 0.0 9.8 14.6#

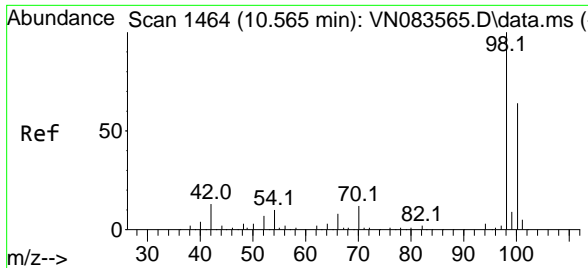


#44  
 Trichloroethene  
 Concen: 3.096 ug/l  
 RT: 9.359 min Scan# 1259  
 Delta R.T. 0.012 min  
 Lab File: VN083735.D  
 Acq: 09 Sep 2024 22:36



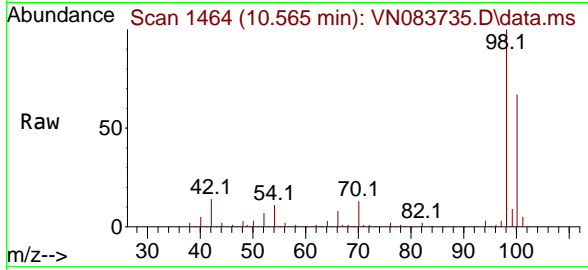
Tgt Ion: 130 Resp: 5027  
 Ion Ratio Lower Upper  
 130 100  
 95 117.6 0.0 200.4



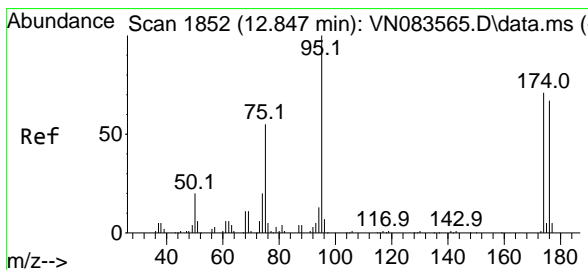
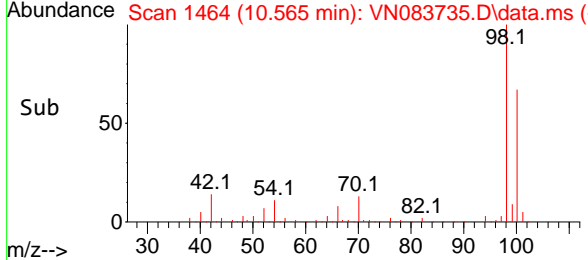
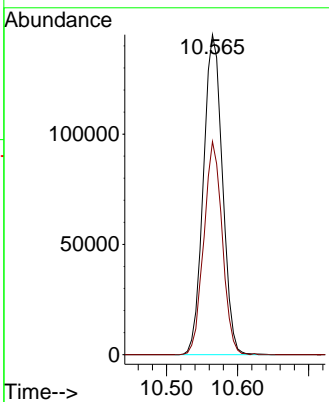


#50  
 Toluene-d8  
 Concen: 48.256 ug/l  
 RT: 10.565 min Scan# 14  
 Delta R.T. -0.000 min  
 Lab File: VN083735.D  
 Acq: 09 Sep 2024 22:36

Instrument :  
 MSVOA\_N  
 ClientSampleId :

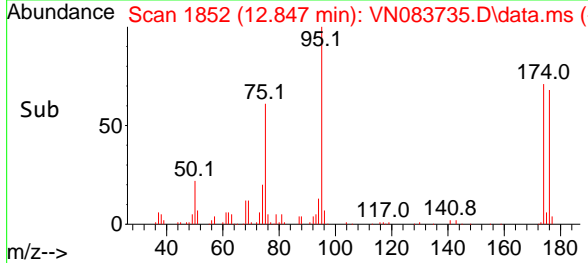
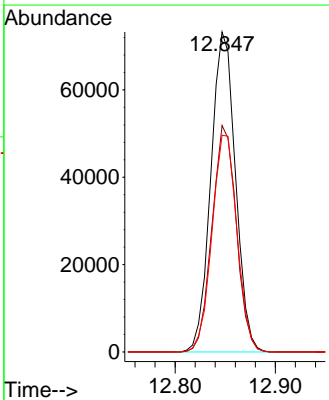
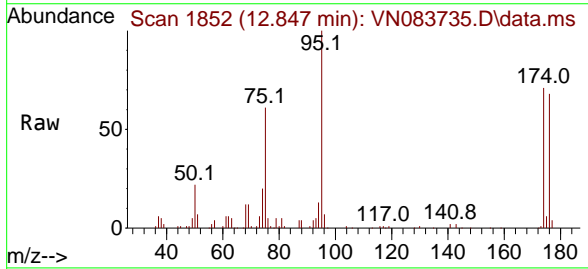


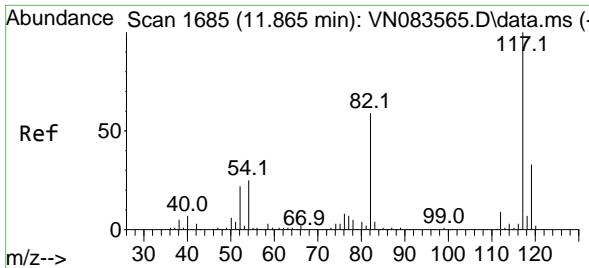
Tgt Ion: 98 Resp: 270374  
 Ion Ratio Lower Upper  
 98 100  
 100 64.4 52.0 78.0



#62  
 4-Bromofluorobenzene  
 Concen: 60.096 ug/l  
 RT: 12.847 min Scan# 1852  
 Delta R.T. -0.000 min  
 Lab File: VN083735.D  
 Acq: 09 Sep 2024 22:36

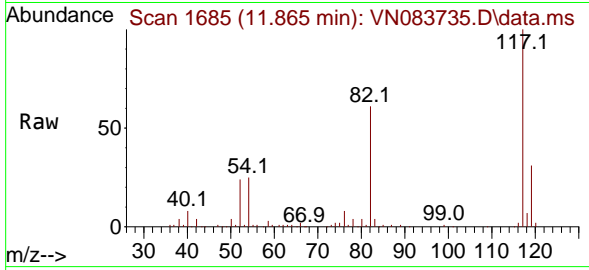
Tgt Ion: 95 Resp: 124698  
 Ion Ratio Lower Upper  
 95 100  
 174 70.0 0.0 139.8  
 176 68.9 0.0 131.4





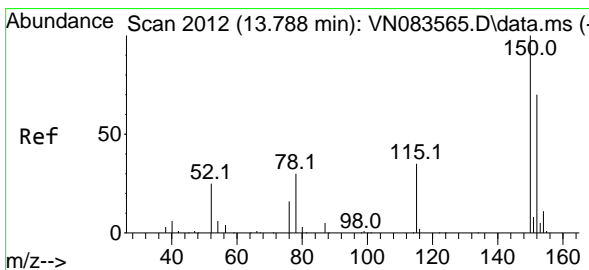
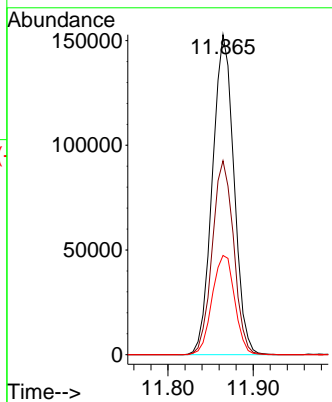
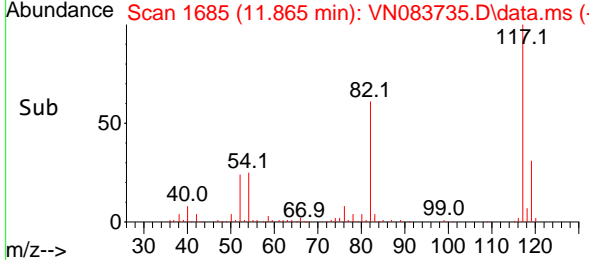
#63  
 Chlorobenzene-d5  
 Concen: 50.000 ug/l  
 RT: 11.865 min Scan# 1685  
 Delta R.T. -0.000 min  
 Lab File: VN083735.D  
 Acq: 09 Sep 2024 22:36

Instrument : MSVOA\_N  
 ClientSampleId :

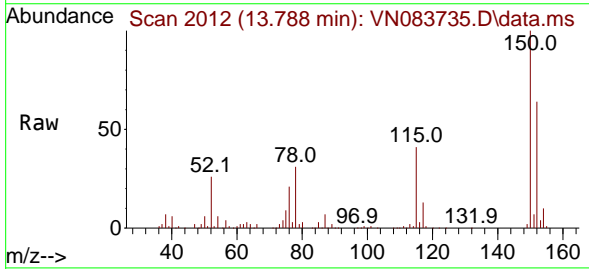


Tgt Ion:117 Resp: 269062

Ion	Ratio	Lower	Upper
117	100		
82	60.6	47.4	71.0
119	31.0	26.3	39.5

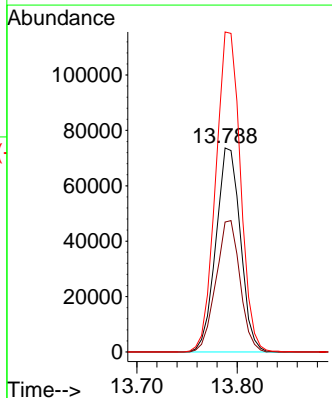
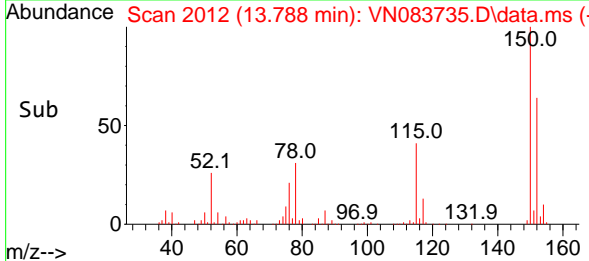


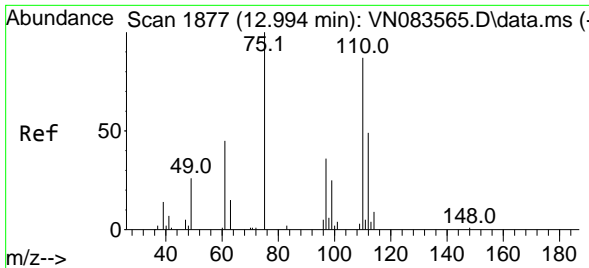
#72  
 1,4-Dichlorobenzene-d4  
 Concen: 50.000 ug/l  
 RT: 13.788 min Scan# 2012  
 Delta R.T. -0.000 min  
 Lab File: VN083735.D  
 Acq: 09 Sep 2024 22:36



Tgt Ion:152 Resp: 124989

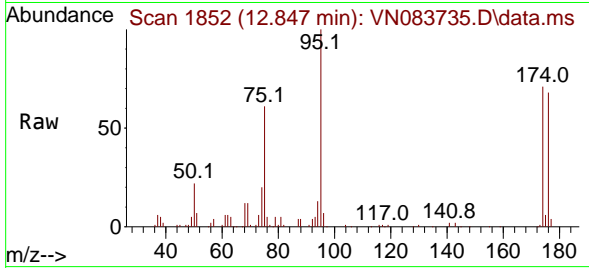
Ion	Ratio	Lower	Upper
152	100		
115	63.4	32.2	96.6
150	158.2	0.0	348.6



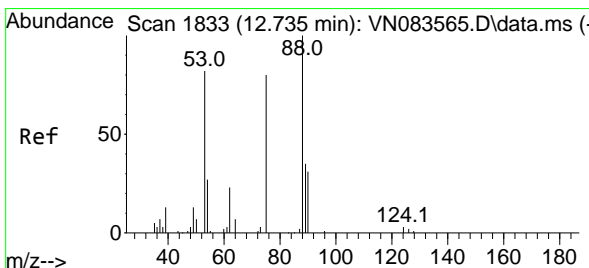
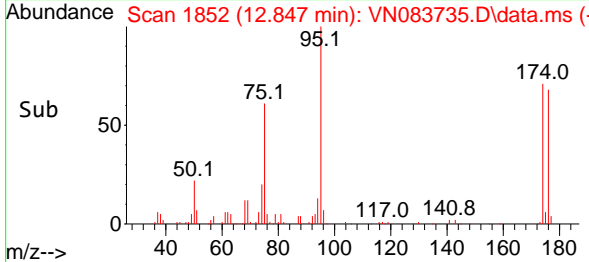
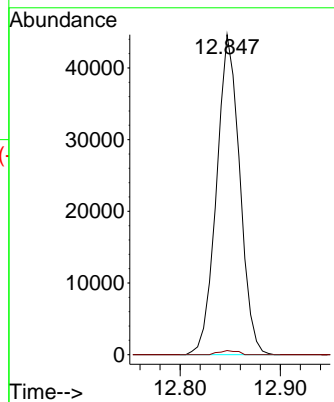


#76  
 1,2,3-Trichloropropane  
 Concen: 28.454 ug/l  
 RT: 12.847 min Scan# 1852  
 Delta R.T. -0.147 min  
 Lab File: VN083735.D  
 Acq: 09 Sep 2024 22:36

Instrument : MSVOA\_N  
 ClientSampleId :



Tgt Ion: 75 Resp: 71804  
 Ion Ratio Lower Upper  
 75 100  
 77 1.1 95.2 285.6#



#81  
 trans-1,4-Dichloro-2-butene  
 Concen: 67.111 ug/l  
 RT: 12.847 min Scan# 1852  
 Delta R.T. 0.112 min  
 Lab File: VN083735.D  
 Acq: 09 Sep 2024 22:36

Tgt Ion: 75 Resp: 71804  
 Ion Ratio Lower Upper  
 75 100  
 53 0.0 81.2 121.8#  
 89 0.0 35.7 53.5#

