

Data Path : Z:\VOASRV\HPCHEM1\MSVOA N\DATA\VN091018\
 Data File : VN051100.D
 Acq On : 11 Sep 2018 1:11
 Operator : MD\SY
 Sample : J4777-04
 Misc : 5.00mL/MSVOA N/WATER
 ALS Vial : 40 Sample Multiplier: 1

Instrument :
 MSVOA_N
 ClientSampleId :
 PL-05-090718-B

Quant Time: Sep 11 05:29:13 2018
 Quant Method : Z:\VOASRV\HPCHEM1\MSVOA_N\METHODS\82N091018W.M
 Quant Title : SW846 8260
 QLast Update : Tue Sep 11 02:27:09 2018
 Response via : Initial Calibration

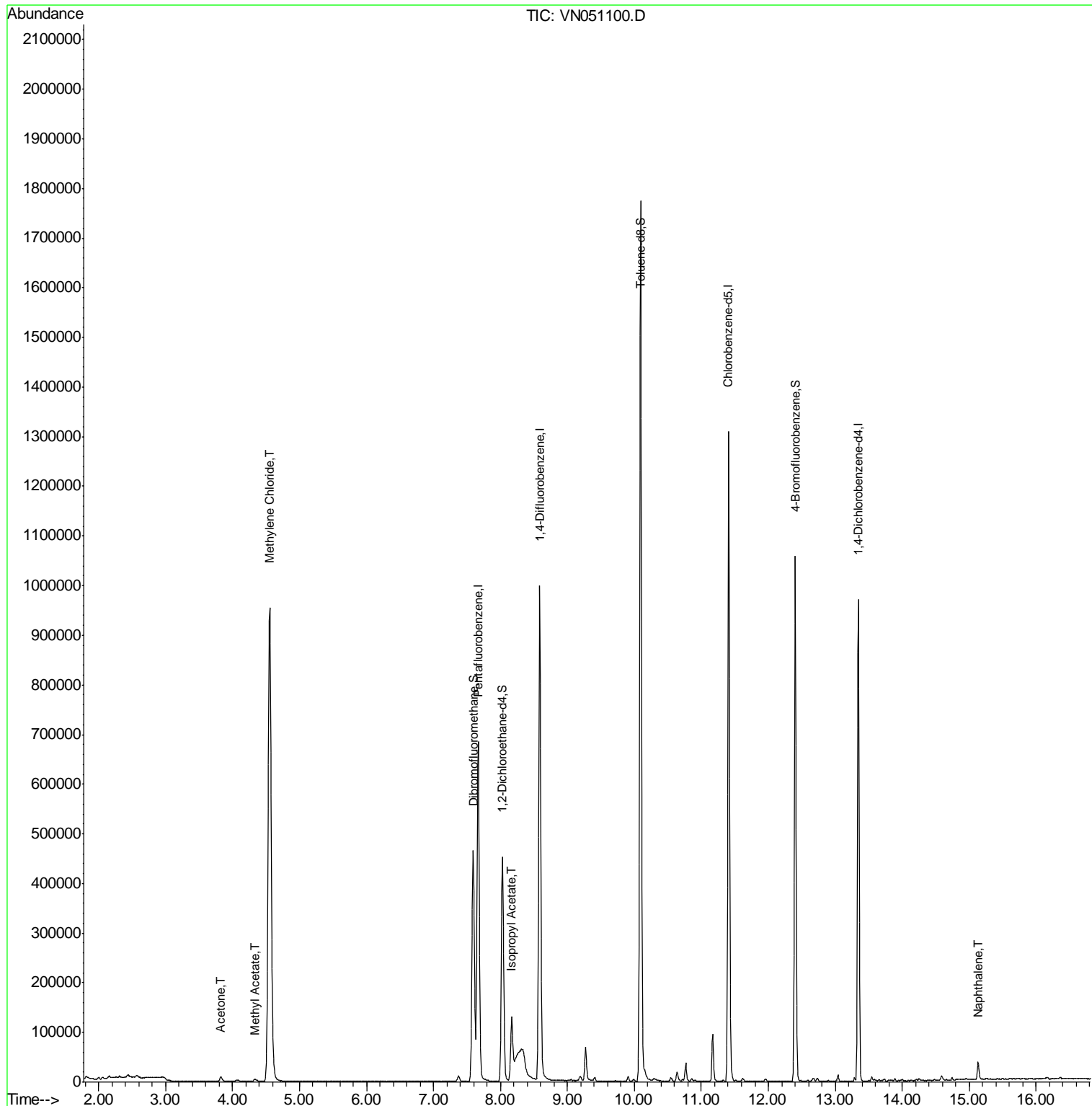
Internal Standards	R.T.	QIon	Response	Conc	Units	Dev(Min)
1) Pentafluorobenzene	7.67	168	613883	50.00	ug/l	0.00
34) 1,4-Difluorobenzene	8.59	114	966619	50.00	ug/l	0.00
63) Chlorobenzene-d5	11.41	117	839041	50.00	ug/l	0.00
72) 1,4-Dichlorobenzene-d4	13.35	152	289866	50.00	ug/l	0.00
System Monitoring Compounds						
33) 1,2-Dichloroethane-d4	8.03	65	370851	54.28	ug/l	0.00
Spiked Amount	50.000		Recovery	=	108.56%	
35) Dibromofluoromethane	7.59	113	361237	49.73	ug/l	0.00
Spiked Amount	50.000		Recovery	=	99.46%	
50) Toluene-d8	10.09	98	1322520	47.98	ug/l	0.00
Spiked Amount	50.000		Recovery	=	95.96%	
62) 4-Bromofluorobenzene	12.40	95	366555	40.20	ug/l	0.00
Spiked Amount	50.000		Recovery	=	80.40%	
Target Compounds						
16) Acetone	3.82	43	15381	3.35	ug/l	97
18) Methyl Acetate	4.33	43	9603	1.76	ug/l #	80
20) Methylene Chloride	4.55	84	789989	104.69	ug/l	99
43) Isopropyl Acetate	8.17	43	161349	14.88	ug/l #	84
95) Naphthalene	15.13	128	31616	7.93	ug/l	99

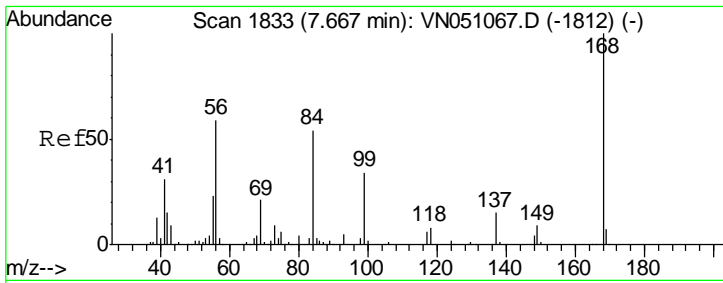
(#) = qualifier out of range (m) = manual integration (+) = signals summed

Data Path : Z:\VOASRV\HPCHEM1\MSVOA N\DATA\VN091018\
 Data File : VN051100.D
 Acq On : 11 Sep 2018 1:11
 Operator : MD\SY
 Sample : J4777-04
 Misc : 5.00mL/MSVOA N/WATER
 ALS Vial : 40 Sample Multiplier: 1

Instrument :
 MSVOA_N
 ClientSampleId :
 PL-05-090718-B

Quant Time: Sep 11 05:29:13 2018
 Quant Method : Z:\VOASRV\HPCHEM1\MSVOA_N\METHODS\82N091018W.M
 Quant Title : SW846 8260
 QLast Update : Tue Sep 11 02:27:09 2018
 Response via : Initial Calibration

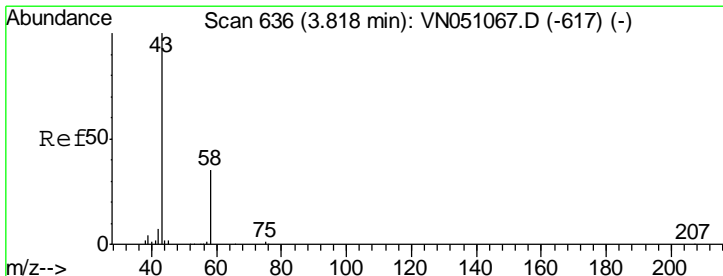
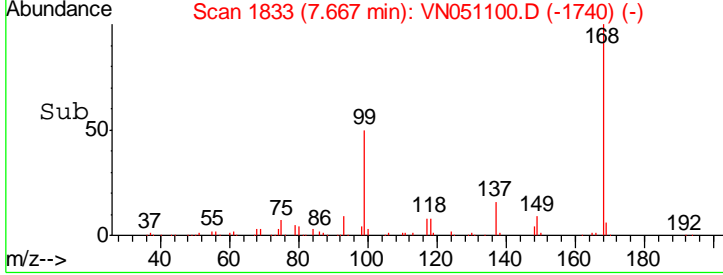
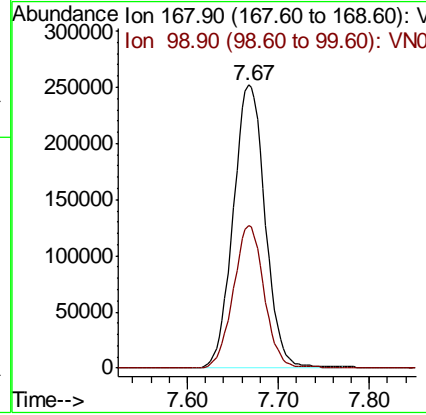
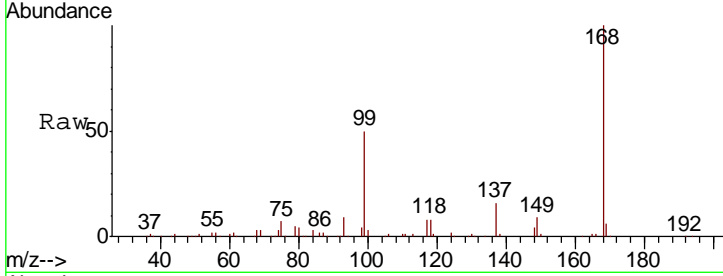




#1
 Pentafluorobenzene
 Concen: 50.00 ug/l
 RT: 7.67 min Scan# 1833
 Delta R.T. -0.00 min
 Lab File: VN051100.D
 Acq: 11 Sep 2018 1:11

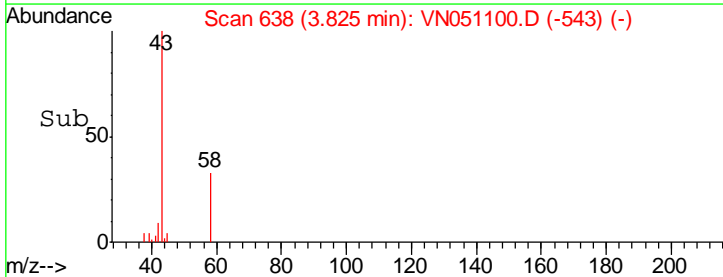
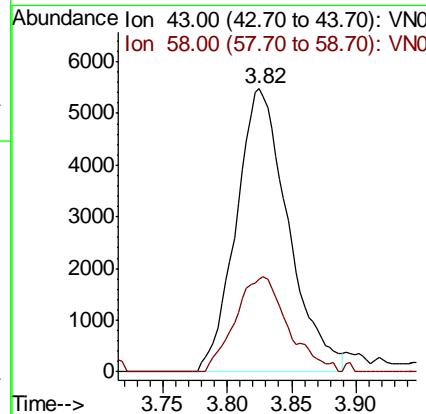
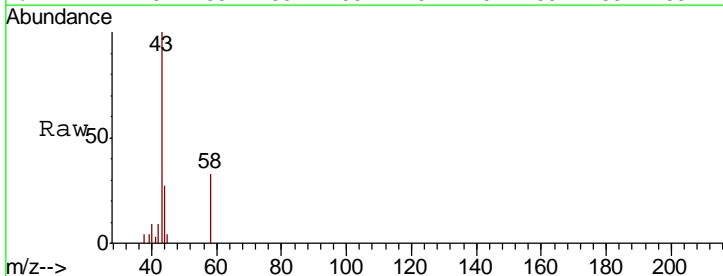
Instrument : MSVOA_N
 ClientSampled : PL-05-090718-B

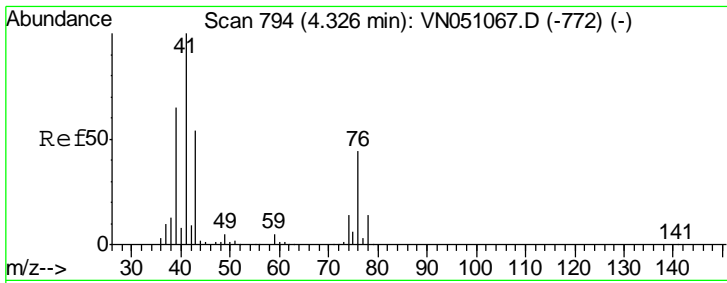
Tgt Ion	Resp	Lower	Upper
168	100		
99	50.2	38.3	57.5



#16
 Acetone
 Concen: 3.35 ug/l
 RT: 3.82 min Scan# 638
 Delta R.T. 0.01 min
 Lab File: VN051100.D
 Acq: 11 Sep 2018 1:11

Tgt Ion	Resp	Lower	Upper
43	100		
58	32.7	27.8	41.6

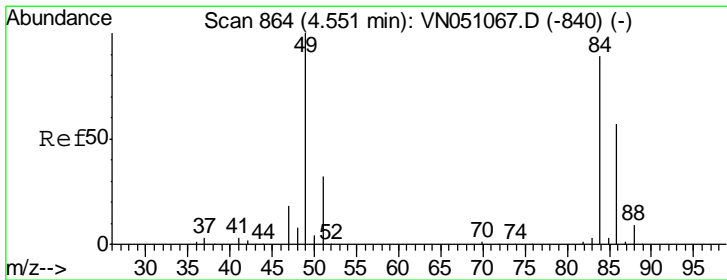
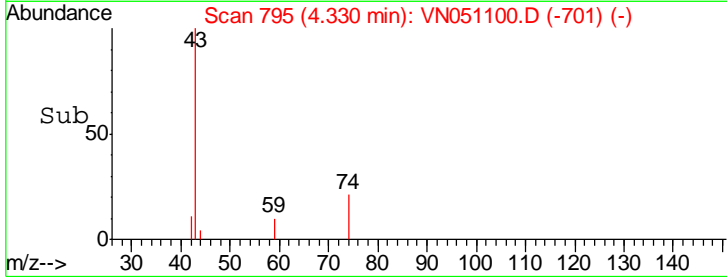
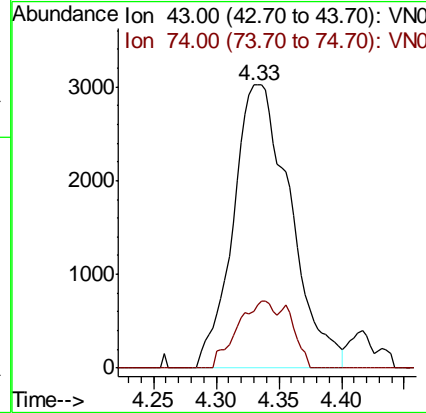
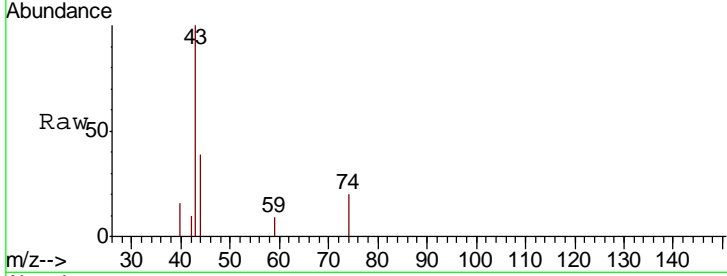




#18
 Methyl Acetate
 Concen: 1.76 ug/l
 RT: 4.33 min Scan# 795
 Delta R.T. 0.00 min
 Lab File: VN051100.D
 Acq: 11 Sep 2018 1:11

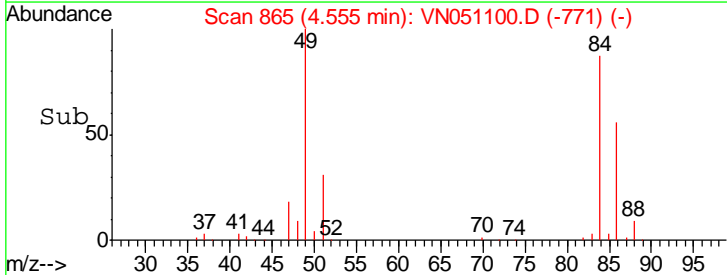
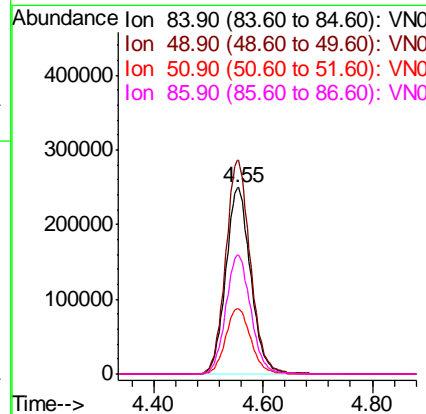
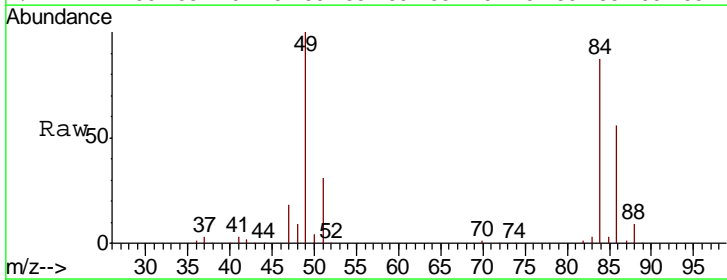
Instrument :
 MSVOA_N
 ClientSampled :
 PL-05-090718-B

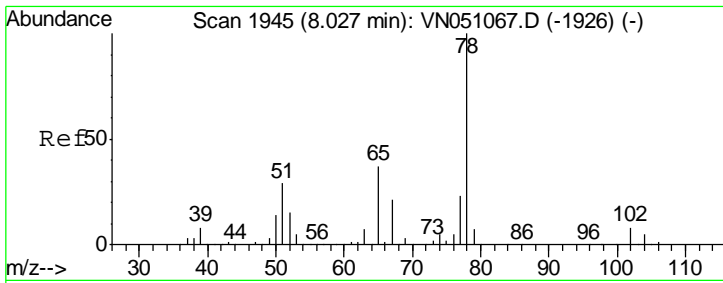
Tgt Ion	Resp	Lower	Upper
43	100		
74	15.8	20.7	31.1#



#20
 Methylene Chloride
 Concen: 104.69 ug/l
 RT: 4.55 min Scan# 865
 Delta R.T. 0.00 min
 Lab File: VN051100.D
 Acq: 11 Sep 2018 1:11

Tgt Ion	Resp	Lower	Upper
84	100		
49	114.4	90.2	135.2
51	35.1	28.4	42.6
86	64.1	51.8	77.8

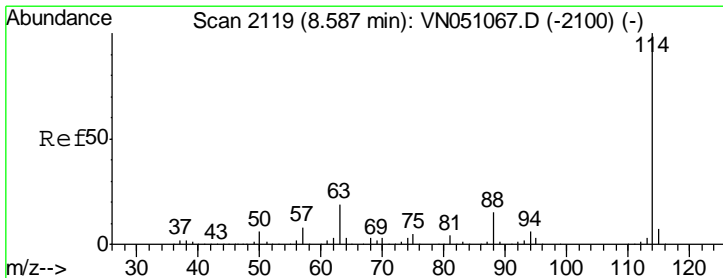
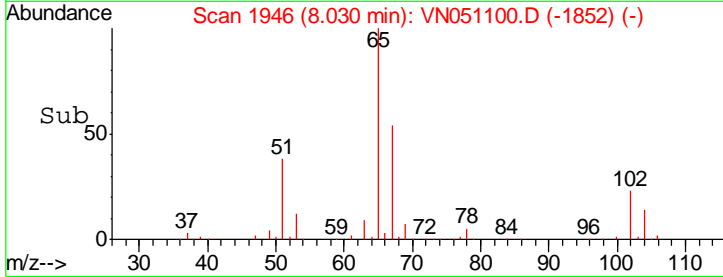
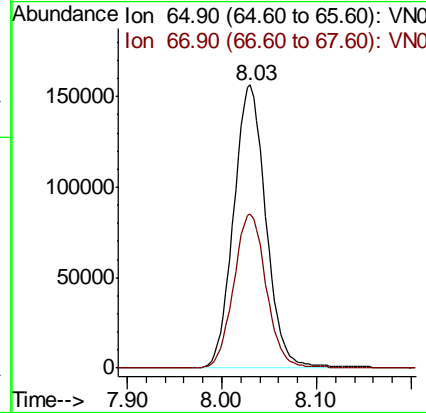
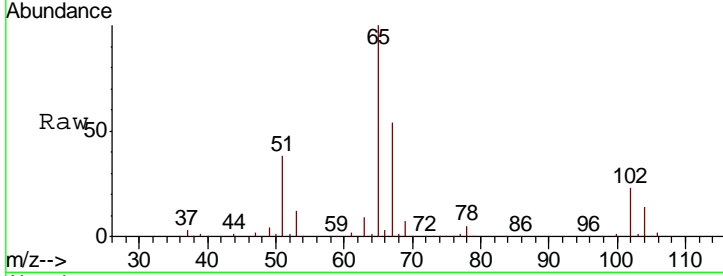




#33
 1,2-Dichloroethane-d4
 Concen: 54.28 ug/l
 RT: 8.03 min Scan# 1946
 Delta R.T. 0.00 min
 Lab File: VN051100.D
 Acq: 11 Sep 2018 1:11

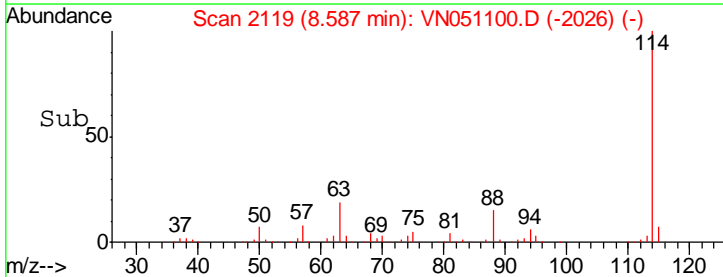
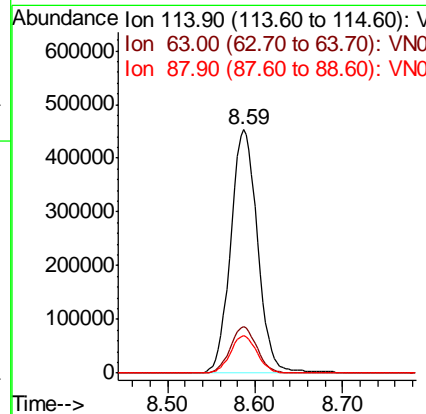
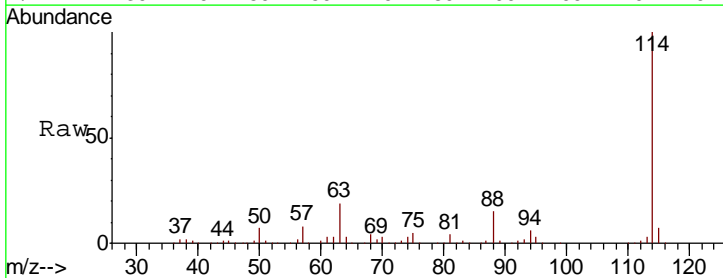
Instrument :
 MSVOA_N
 ClientSampled :
 PL-05-090718-B

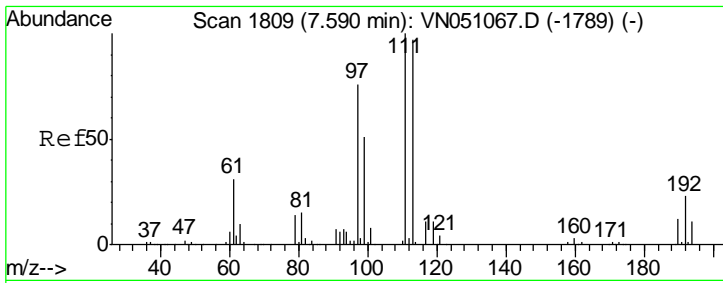
Tgt Ion	Resp	Lower	Upper
65	100		
67	55.0	0.0	112.0



#34
 1,4-Difluorobenzene
 Concen: 50.00 ug/l
 RT: 8.59 min Scan# 2119
 Delta R.T. -0.00 min
 Lab File: VN051100.D
 Acq: 11 Sep 2018 1:11

Tgt Ion	Resp	Lower	Upper
114	100		
63	19.1	0.0	37.8
88	15.4	0.0	30.8

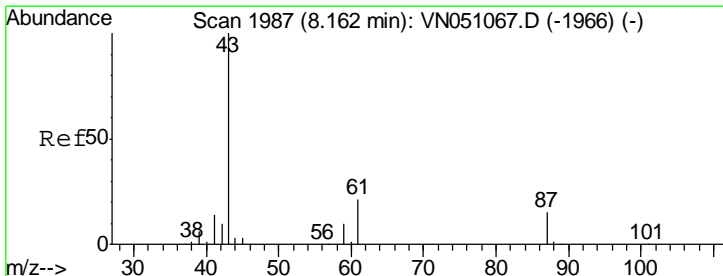
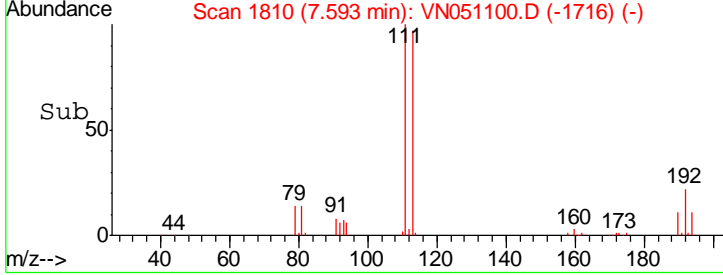
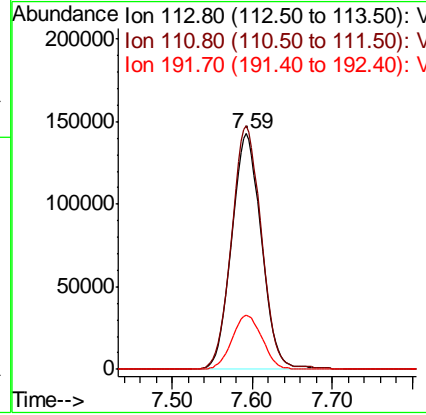
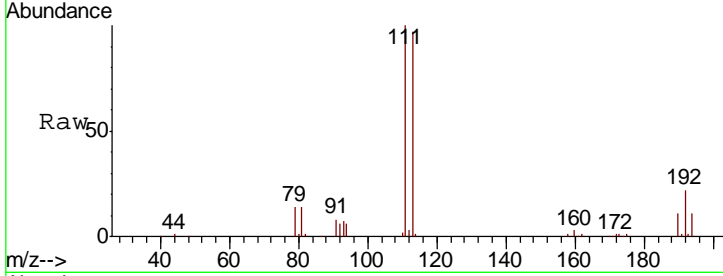




#35
 Dibromofluoromethane
 Concen: 49.73 ug/l
 RT: 7.59 min Scan# 1810
 Delta R.T. 0.00 min
 Lab File: VN051100.D
 Acq: 11 Sep 2018 1:11

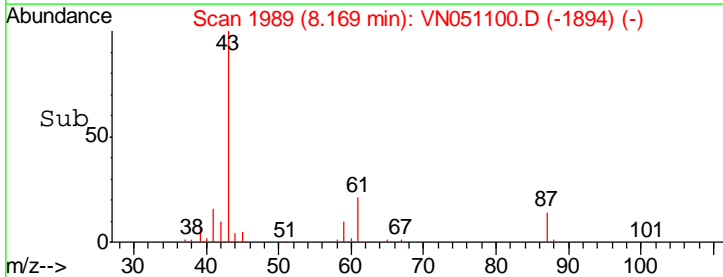
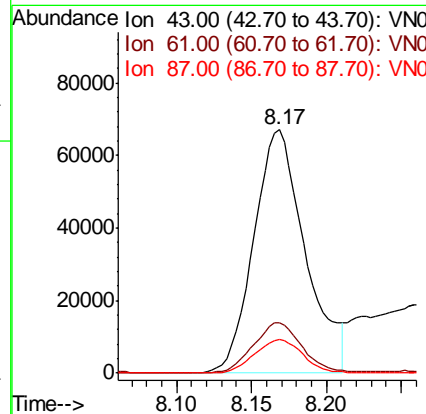
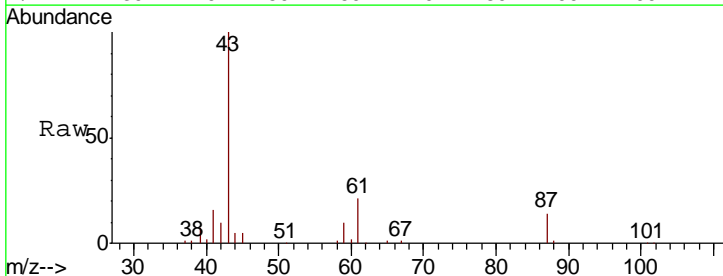
Instrument : MSVOA_N
 ClientSampled : PL-05-090718-B

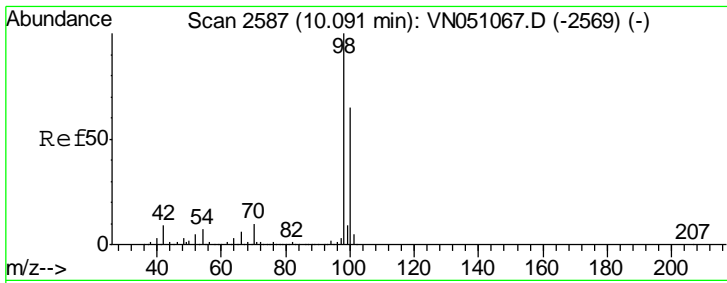
Tgt Ion	Resp	Lower	Upper
113	361237		
111	102.6	83.0	124.6
192	23.3	18.7	28.1



#43
 Isopropyl Acetate
 Concen: 14.88 ug/l
 RT: 8.17 min Scan# 1989
 Delta R.T. 0.01 min
 Lab File: VN051100.D
 Acq: 11 Sep 2018 1:11

Tgt Ion	Resp	Lower	Upper
43	161349		
61	19.8	25.0	37.6#
87	12.8	11.8	17.8

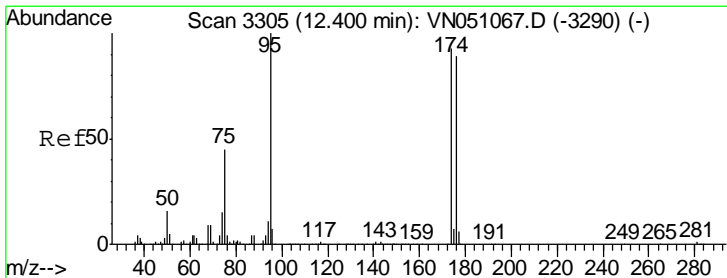
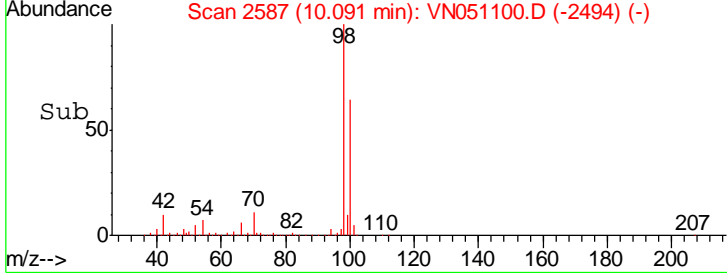
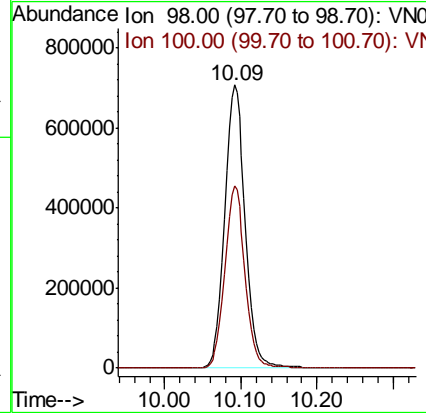
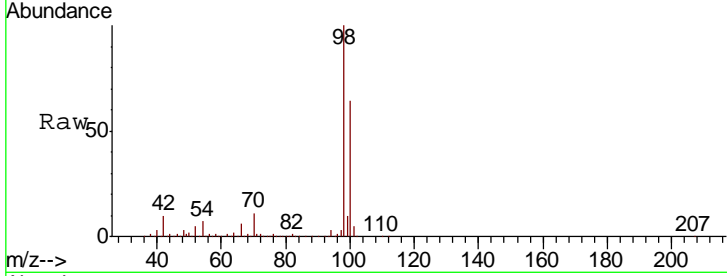




#50
 Toluene-d8
 Concen: 47.98 ug/l
 RT: 10.09 min Scan# 2587
 Delta R.T. -0.00 min
 Lab File: VN051100.D
 Acq: 11 Sep 2018 1:11

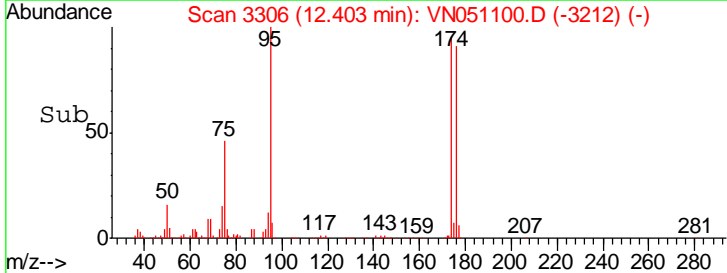
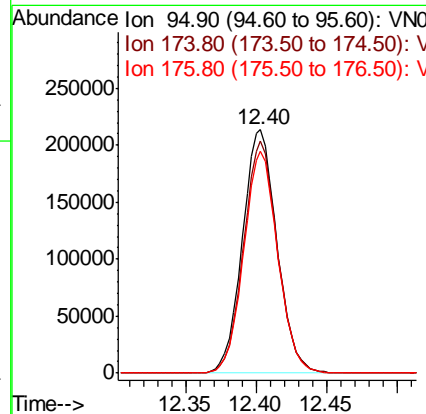
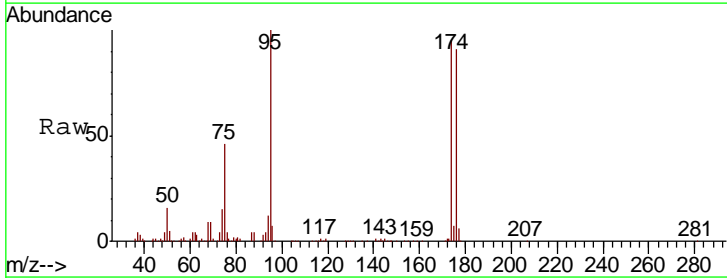
Instrument : MSVOA_N
 ClientSampled : PL-05-090718-B

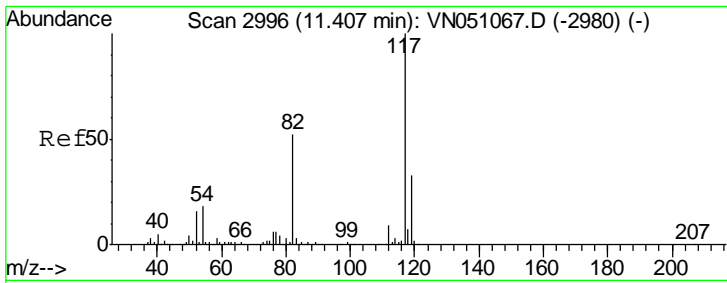
Tgt Ion: 98 Resp: 1322520
 Ion Ratio Lower Upper
 98 100
 100 63.7 52.0 78.0



#62
 4-Bromofluorobenzene
 Concen: 40.20 ug/l
 RT: 12.40 min Scan# 3306
 Delta R.T. 0.00 min
 Lab File: VN051100.D
 Acq: 11 Sep 2018 1:11

Tgt Ion: 95 Resp: 366555
 Ion Ratio Lower Upper
 95 100
 174 93.7 0.0 184.8
 176 90.1 0.0 178.6

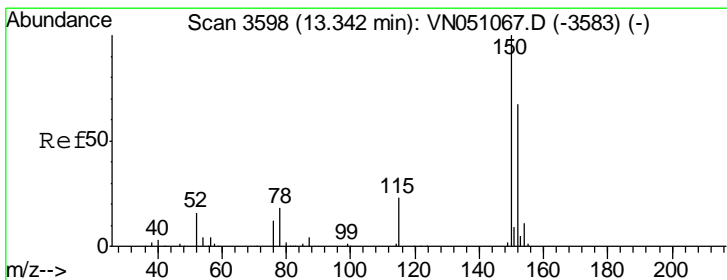
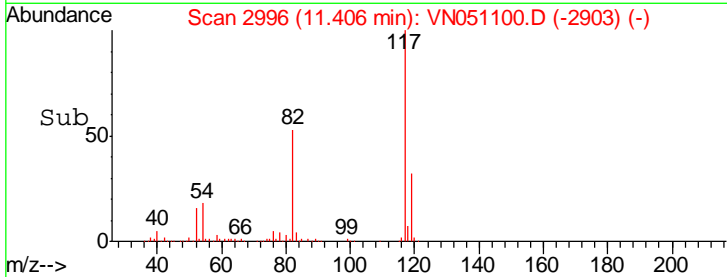
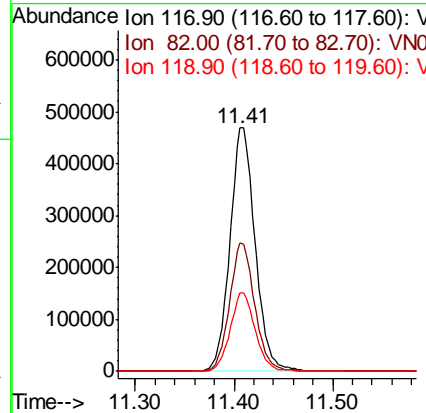
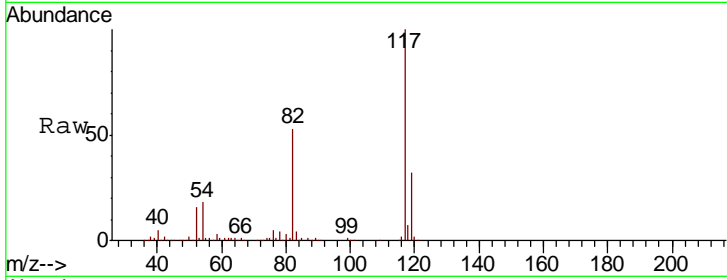




#63
 Chlorobenzene-d5
 Concen: 50.00 ug/l
 RT: 11.41 min Scan# 2996
 Delta R.T. -0.00 min
 Lab File: VN051100.D
 Acq: 11 Sep 2018 1:11

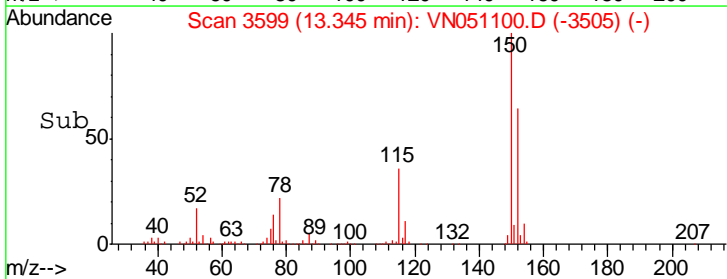
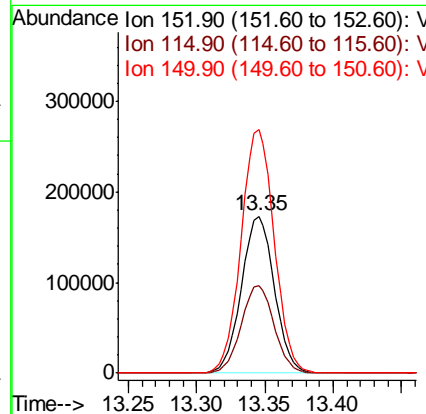
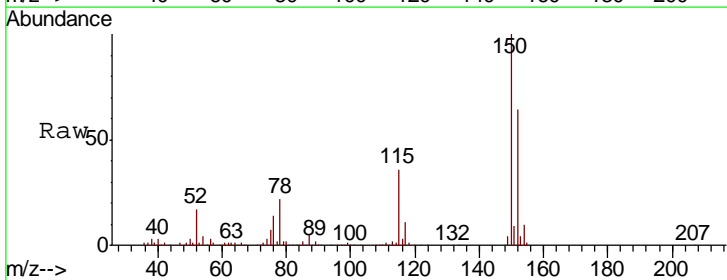
Instrument : MSVOA_N
 ClientSampled : PL-05-090718-B

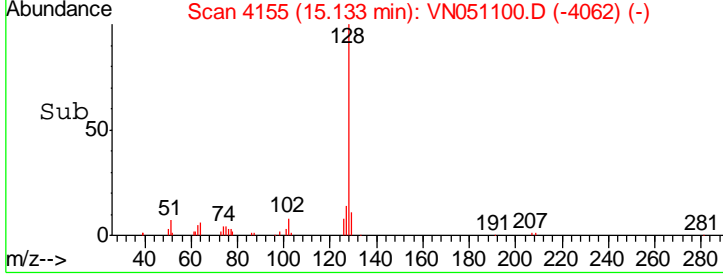
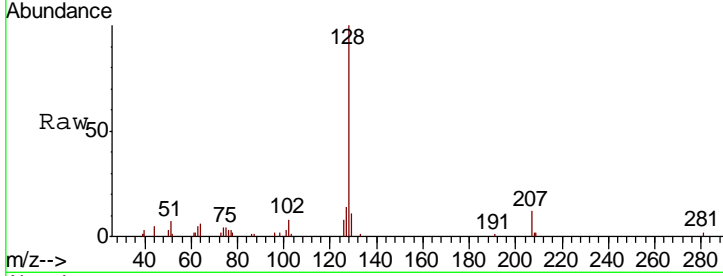
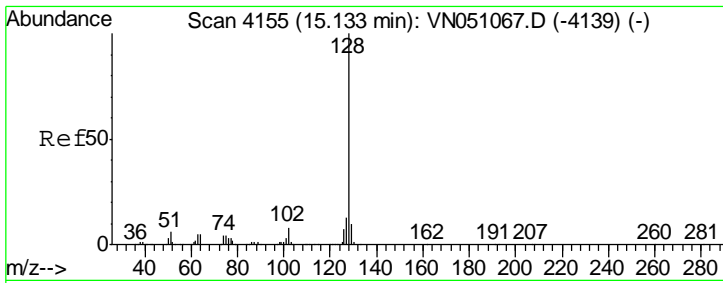
Tgt Ion	Resp	Lower	Upper
117	100		
82	52.7	41.8	62.6
119	32.1	26.2	39.2



#72
 1,4-Dichlorobenzene-d4
 Concen: 50.00 ug/l
 RT: 13.35 min Scan# 3599
 Delta R.T. 0.00 min
 Lab File: VN051100.D
 Acq: 11 Sep 2018 1:11

Tgt Ion	Resp	Lower	Upper
152	100		
115	55.8	28.2	84.7
150	156.2	0.0	349.0





#95
 Naphthalene
 Concen: 7.93 ug/l
 RT: 15.13 min Scan# 4155
 Delta R.T. -0.00 min
 Lab File: VN051100.D
 Acq: 11 Sep 2018 1:11

Instrument : MSVOA_N
 ClientSampled : PL-05-090718-B

Tot Ion	Ratio	Lower	Upper
128	100		
127	13.4	10.6	15.8
129	11.0	8.6	12.8

