

Data Path : Z:\VOASRV\HPCHEM1\MSVOA N\DATA\VN091018\
 Data File : VN051102.D
 Acq On : 11 Sep 2018 2:00
 Operator : MD\SY
 Sample : J4777-08
 Misc : 5.00mL/MSVOA N/WATER
 ALS Vial : 42 Sample Multiplier: 1

Instrument :
 MSVOA_N
 ClientSampleId :
 PL-05-090718-D

Quant Time: Sep 11 05:34:14 2018
 Quant Method : Z:\VOASRV\HPCHEM1\MSVOA_N\METHODS\82N091018W.M
 Quant Title : SW846 8260
 QLast Update : Tue Sep 11 02:27:09 2018
 Response via : Initial Calibration

Internal Standards	R.T.	QIon	Response	Conc	Units	Dev(Min)
1) Pentafluorobenzene	7.67	168	603374	50.00	ug/l	0.00
34) 1,4-Difluorobenzene	8.59	114	946414	50.00	ug/l	0.00
63) Chlorobenzene-d5	11.41	117	828463	50.00	ug/l	0.00
72) 1,4-Dichlorobenzene-d4	13.35	152	278980	50.00	ug/l	0.00

System Monitoring Compounds

33) 1,2-Dichloroethane-d4	8.03	65	363412	54.12	ug/l	0.00
Spiked Amount				50.000		
			Recovery	=	108.24%	
35) Dibromofluoromethane	7.59	113	357257	50.24	ug/l	0.00
Spiked Amount				50.000		
			Recovery	=	100.48%	
50) Toluene-d8	10.09	98	1295576	48.01	ug/l	0.00
Spiked Amount				50.000		
			Recovery	=	96.02%	
62) 4-Bromofluorobenzene	12.40	95	358708	40.18	ug/l	0.00
Spiked Amount				50.000		
			Recovery	=	80.36%	

Target Compounds

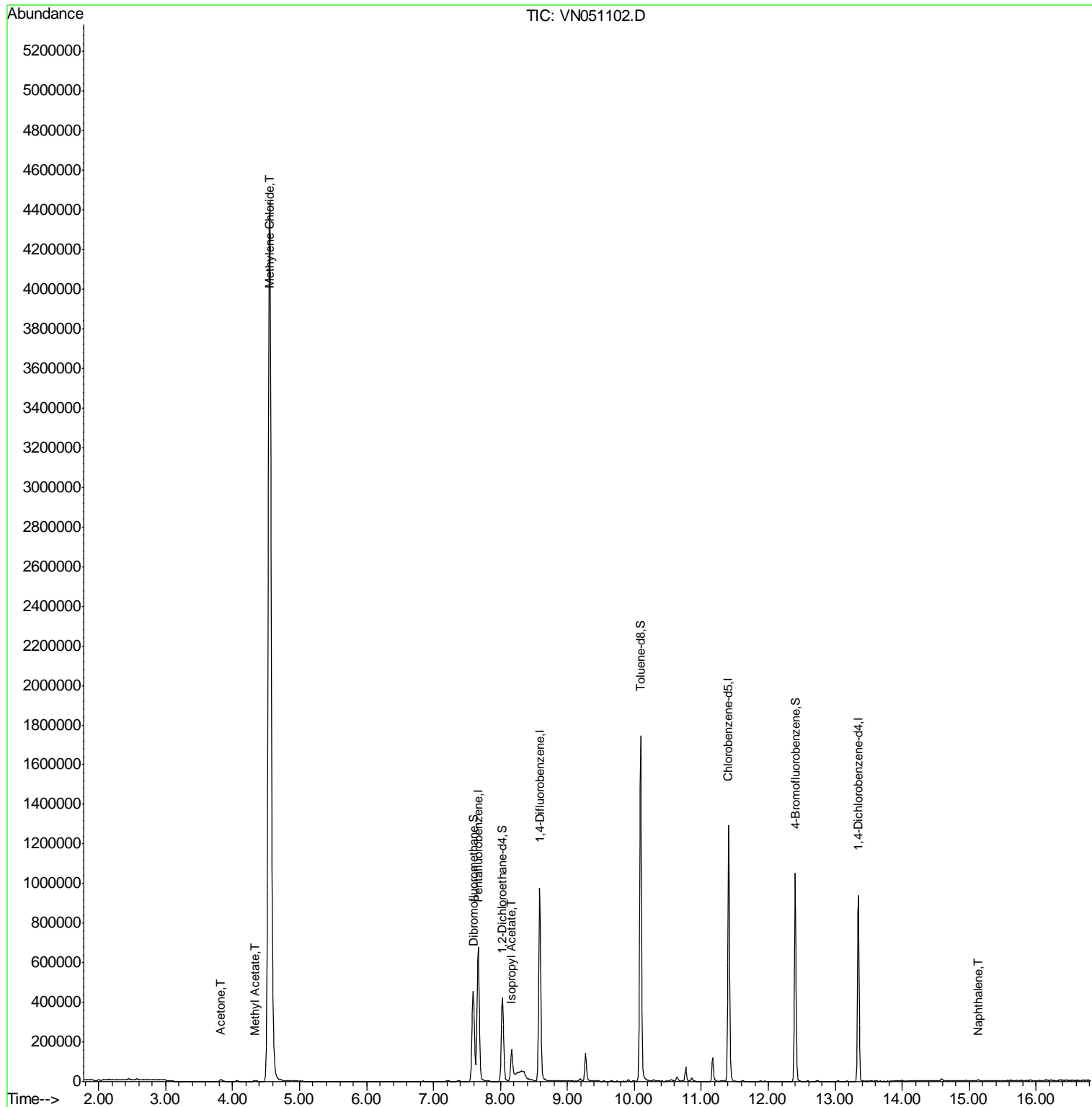
						Qvalue
16) Acetone	3.82	43	17310	4.70	ug/l	100
18) Methyl Acetate	4.33	43	10312	1.92	ug/l	93
20) Methylene Chloride	4.55	84	3723951	502.07	ug/l	100
43) Isopropyl Acetate	8.17	43	194119	18.28	ug/l #	86
95) Naphthalene	15.14	128	5106	5.78	ug/l	97

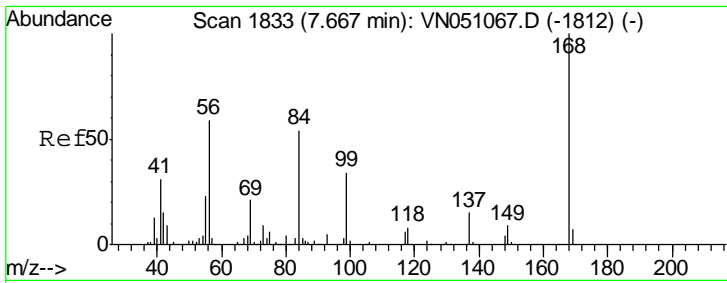
(#) = qualifier out of range (m) = manual integration (+) = signals summed

Data Path : Z:\VOASRV\HPCHEM1\MSVOA N\DATA\VN091018\
 Data File : VN051102.D
 Acq On : 11 Sep 2018 2:00
 Operator : MD\SY
 Sample : J4777-08
 Misc : 5.00mL/MSVOA N/WATER
 ALS Vial : 42 Sample Multiplier: 1

Instrument :
 MSVOA_N
 ClientSampleId :
 PL-05-090718-D

Quant Time: Sep 11 05:34:14 2018
 Quant Method : Z:\VOASRV\HPCHEM1\MSVOA_N\METHODS\82N091018W.M
 Quant Title : SW846 8260
 QLast Update : Tue Sep 11 02:27:09 2018
 Response via : Initial Calibration

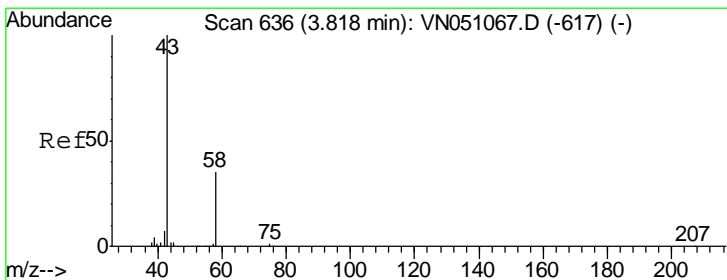
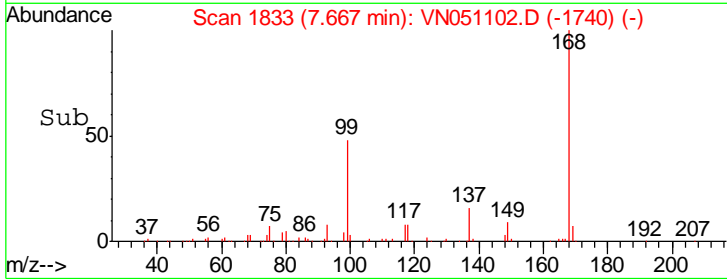
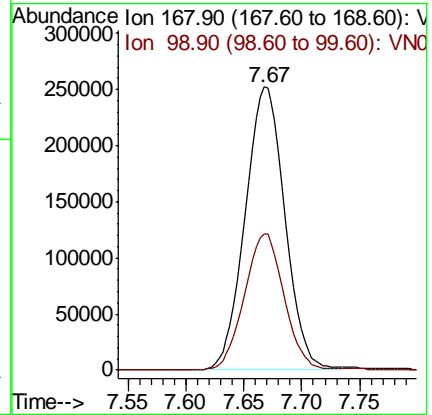
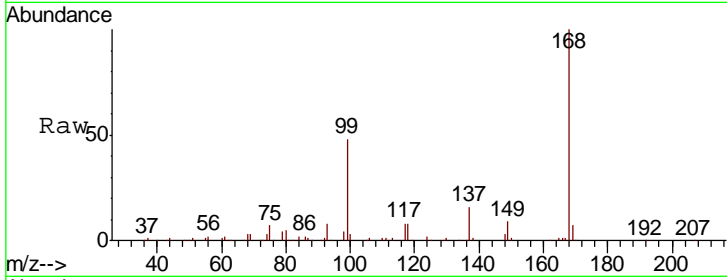




#1
 Pentafluorobenzene
 Concen: 50.00 ug/l
 RT: 7.67 min Scan# 1833
 Delta R.T. 0.00 min
 Lab File: VN051102.D
 Acq: 11 Sep 2018 2:00

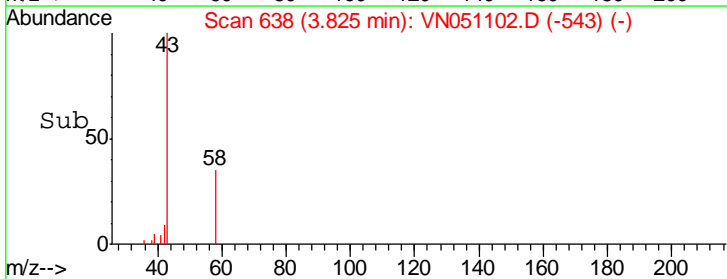
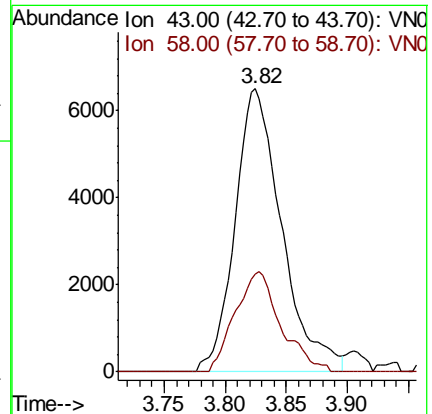
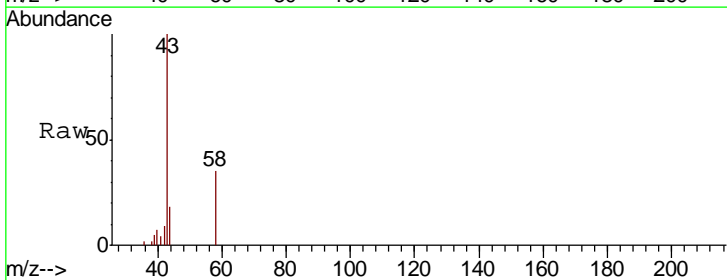
Instrument : MSVOA_N
 ClientSampleId : PL-05-090718-D

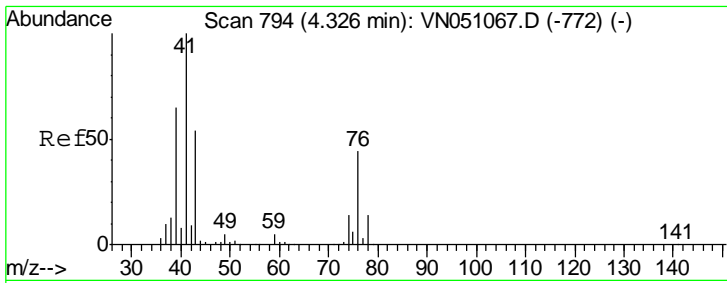
Tgt Ion	Resp	Lower	Upper
168	100		
99	48.3	38.3	57.5



#16
 Acetone
 Concen: 4.70 ug/l
 RT: 3.82 min Scan# 638
 Delta R.T. 0.01 min
 Lab File: VN051102.D
 Acq: 11 Sep 2018 2:00

Tgt Ion	Resp	Lower	Upper
43	100		
58	34.7	27.8	41.6

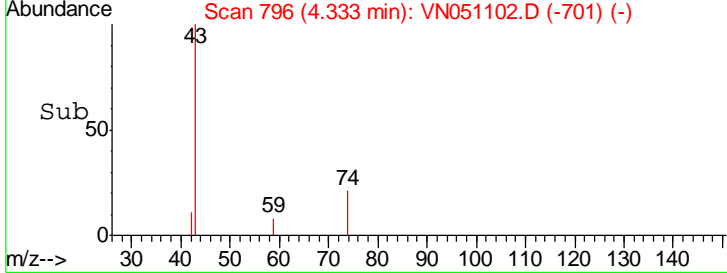
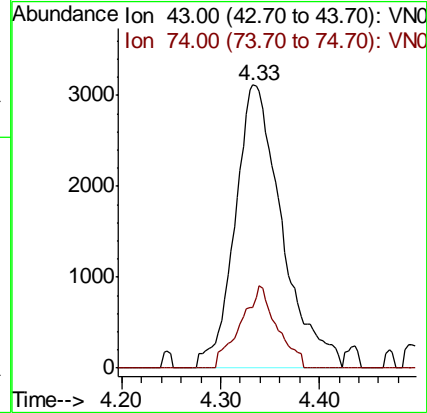
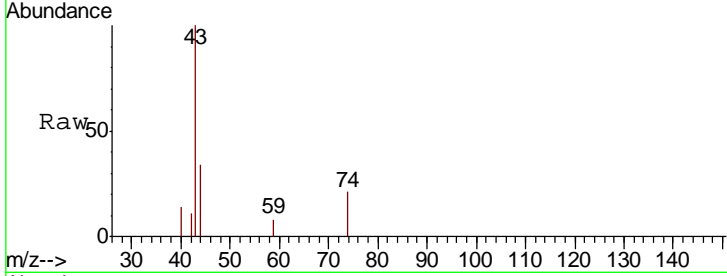




#18
 Methyl Acetate
 Concen: 1.92 ug/l
 RT: 4.33 min Scan# 796
 Delta R.T. 0.01 min
 Lab File: VN051102.D
 Acq: 11 Sep 2018 2:00

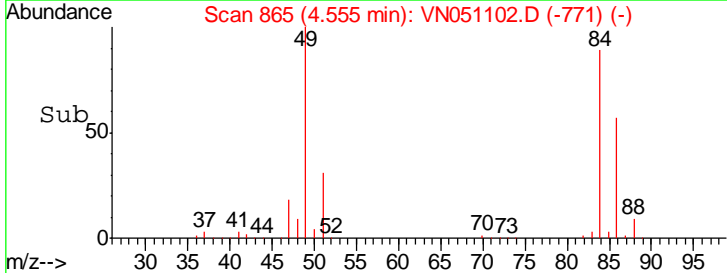
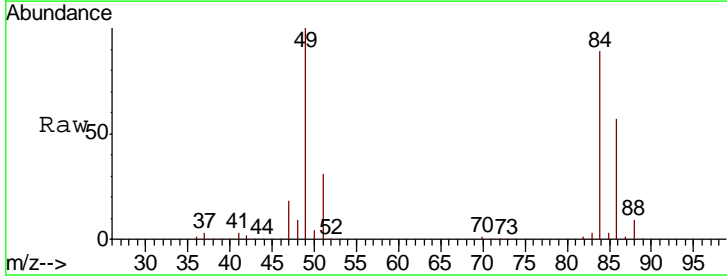
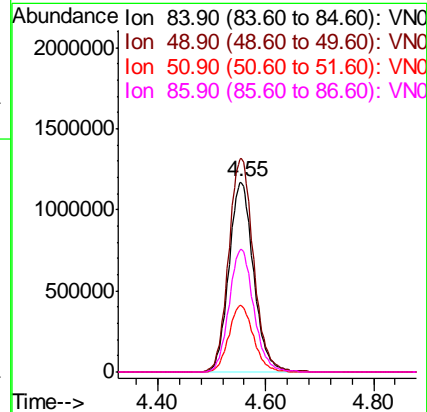
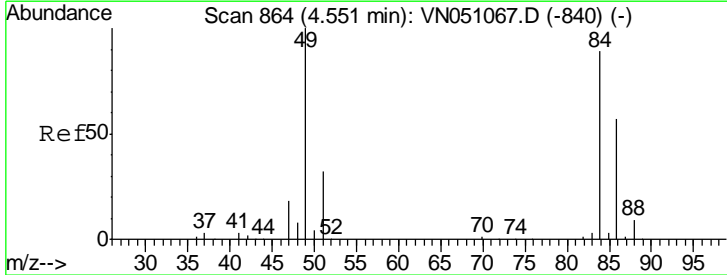
Instrument :
 MSVOA_N
 ClientSampled :
 PL-05-090718-D

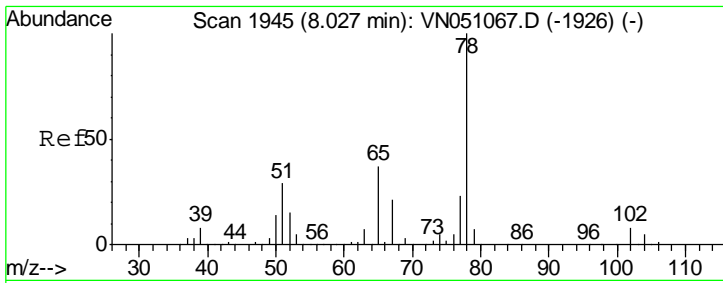
Tgt Ion	Resp	Lower	Upper
43	10312		
43	100		
74	22.5	20.7	31.1



#20
 Methylene Chloride
 Concen: 502.07 ug/l
 RT: 4.55 min Scan# 865
 Delta R.T. 0.00 min
 Lab File: VN051102.D
 Acq: 11 Sep 2018 2:00

Tgt Ion	Resp	Lower	Upper
84	3723951		
84	100		
49	112.6	90.2	135.2
51	35.1	28.4	42.6
86	64.6	51.8	77.8

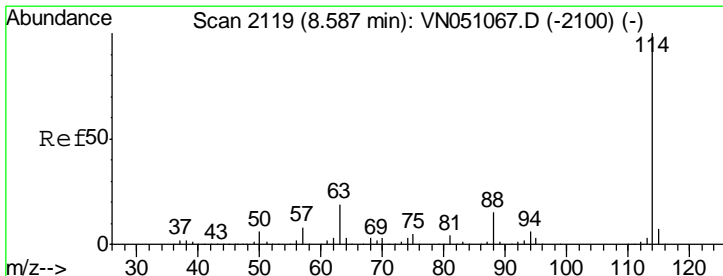
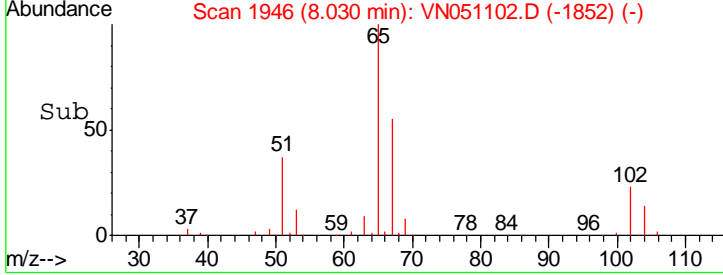
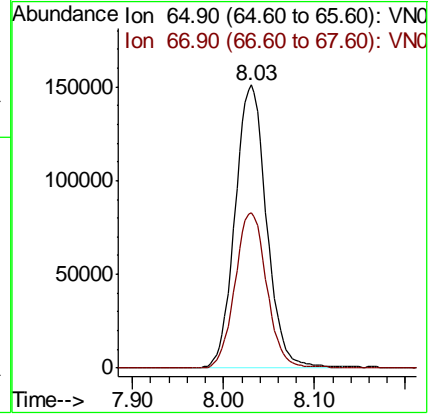
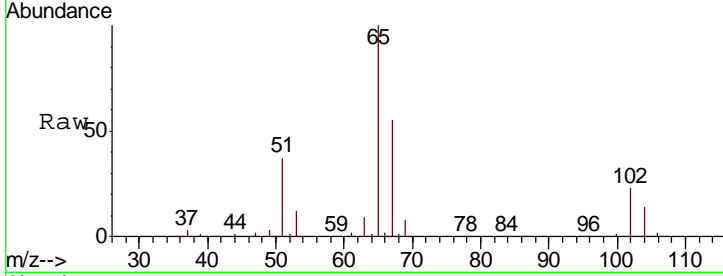




#33
 1,2-Dichloroethane-d4
 Concen: 54.12 ug/l
 RT: 8.03 min Scan# 1946
 Delta R.T. 0.00 min
 Lab File: VN051102.D
 Acq: 11 Sep 2018 2:00

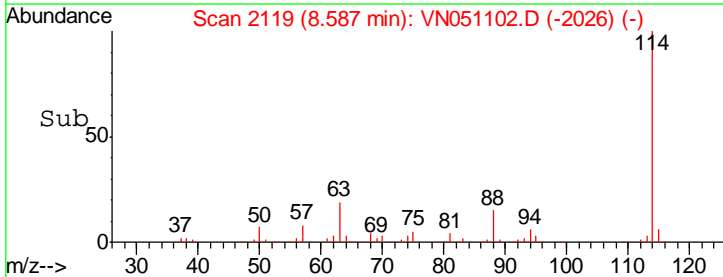
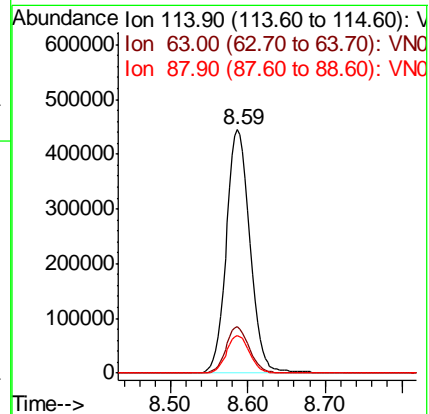
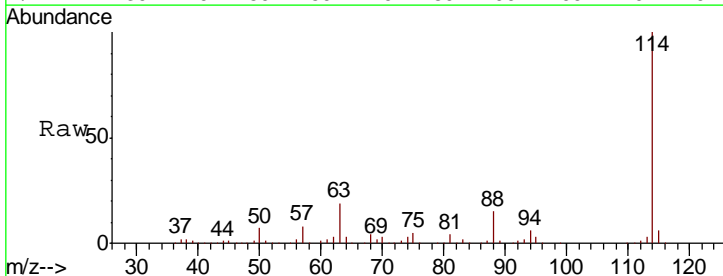
Instrument :
 MSVOA_N
 ClientSampled :
 PL-05-090718-D

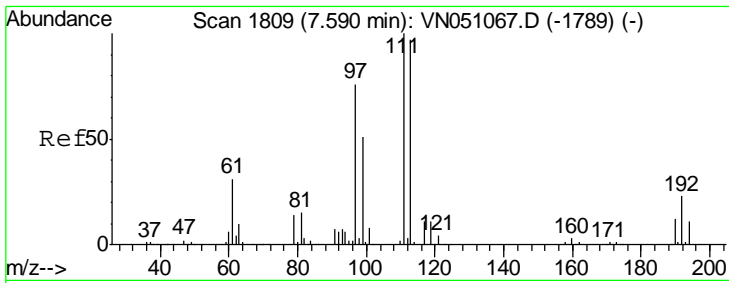
Tgt Ion	Resp	Lower	Upper
65	100		
67	55.1	0.0	112.0



#34
 1,4-Difluorobenzene
 Concen: 50.00 ug/l
 RT: 8.59 min Scan# 2119
 Delta R.T. 0.00 min
 Lab File: VN051102.D
 Acq: 11 Sep 2018 2:00

Tgt Ion	Resp	Lower	Upper
114	100		
63	18.9	0.0	37.8
88	15.2	0.0	30.8

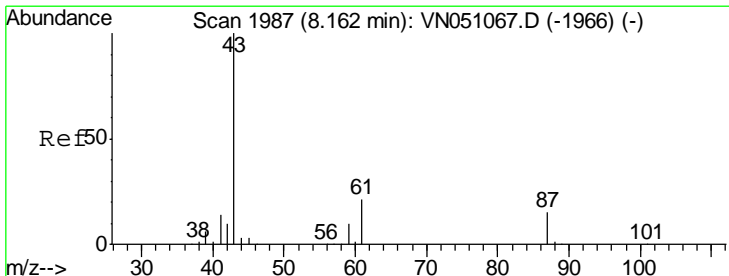
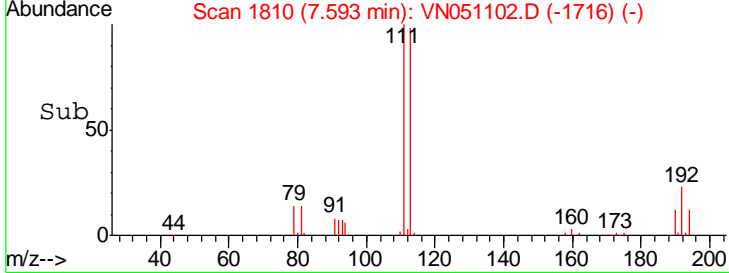
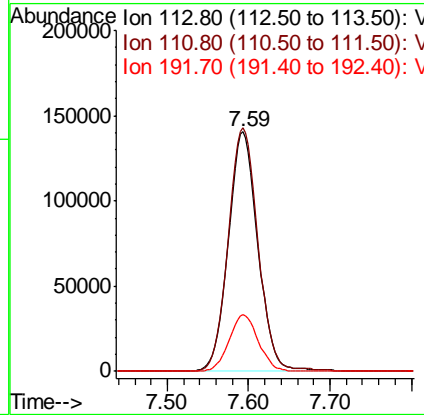
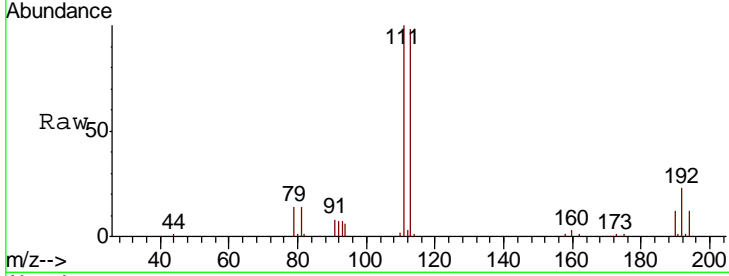




#35
 Dibromofluoromethane
 Concen: 50.24 ug/l
 RT: 7.59 min Scan# 1810
 Delta R.T. 0.00 min
 Lab File: VN051102.D
 Acq: 11 Sep 2018 2:00

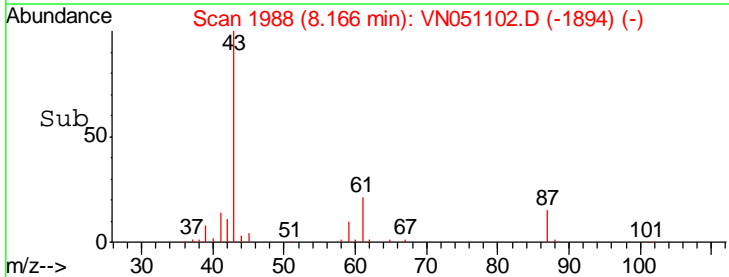
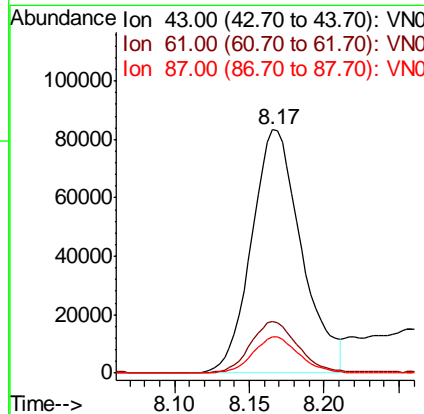
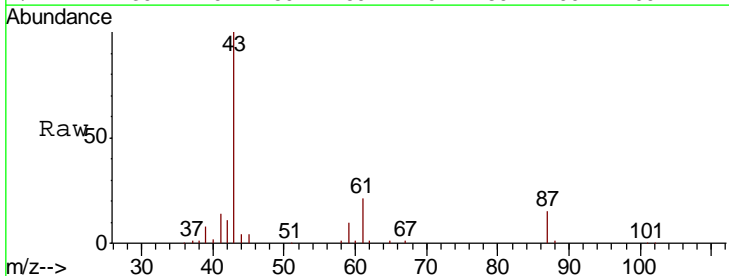
Instrument : MSVOA_N
 ClientSampled : PL-05-090718-D

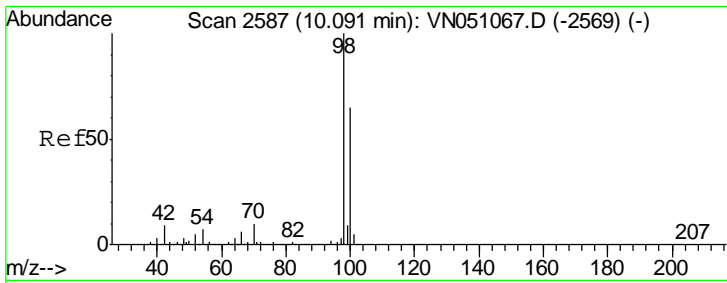
Tgt Ion	Resp	Lower	Upper
113	100		
111	102.6	83.0	124.6
192	23.5	18.7	28.1



#43
 Isopropyl Acetate
 Concen: 18.28 ug/l
 RT: 8.17 min Scan# 1988
 Delta R.T. 0.00 min
 Lab File: VN051102.D
 Acq: 11 Sep 2018 2:00

Tgt Ion	Resp	Lower	Upper
43	100		
61	20.2	25.0	37.6#
87	13.7	11.8	17.8

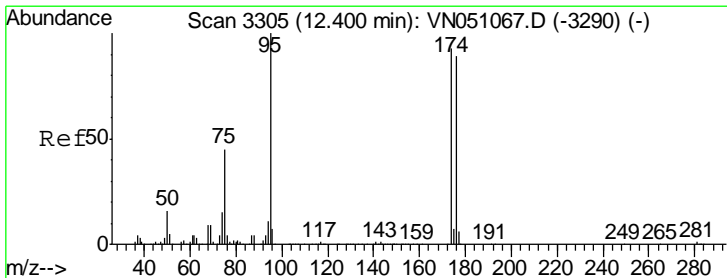
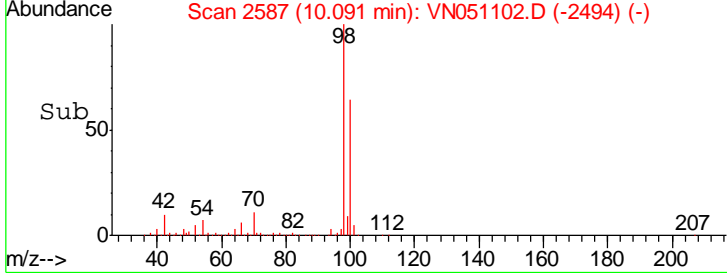
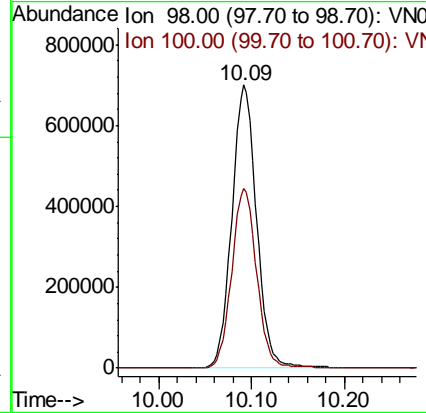
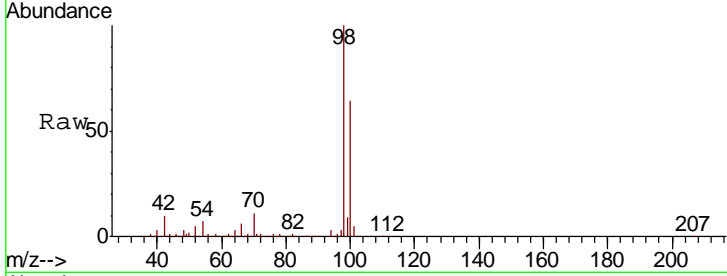




#50
 Toluene-d8
 Concen: 48.01 ug/l
 RT: 10.09 min Scan# 2587
 Delta R.T. 0.00 min
 Lab File: VN051102.D
 Acq: 11 Sep 2018 2:00

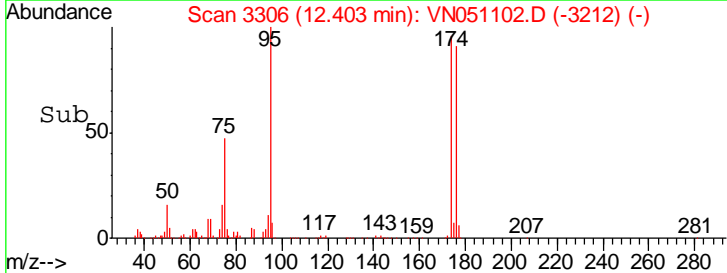
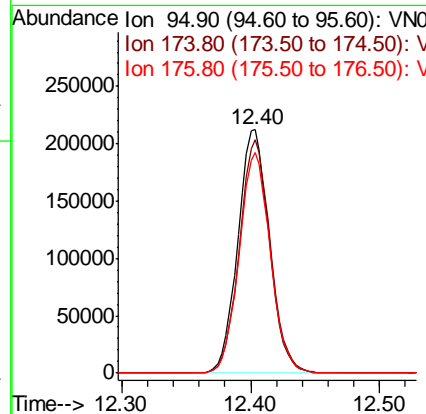
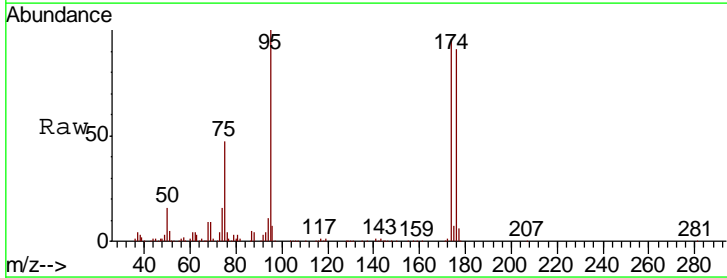
Instrument : MSVOA_N
 ClientSampled : PL-05-090718-D

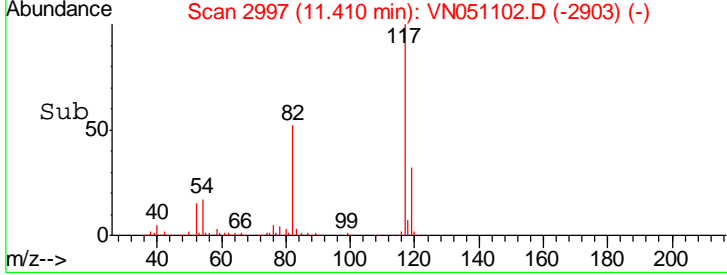
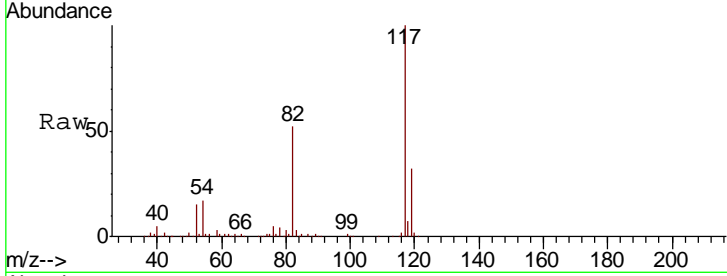
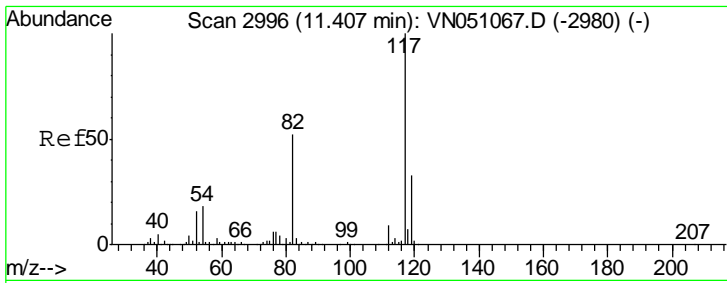
Tgt Ion: 98 Resp: 1295576
 Ion Ratio Lower Upper
 98 100
 100 64.2 52.0 78.0



#62
 4-Bromofluorobenzene
 Concen: 40.18 ug/l
 RT: 12.40 min Scan# 3306
 Delta R.T. 0.00 min
 Lab File: VN051102.D
 Acq: 11 Sep 2018 2:00

Tgt Ion: 95 Resp: 358708
 Ion Ratio Lower Upper
 95 100
 174 94.8 0.0 184.8
 176 89.8 0.0 178.6

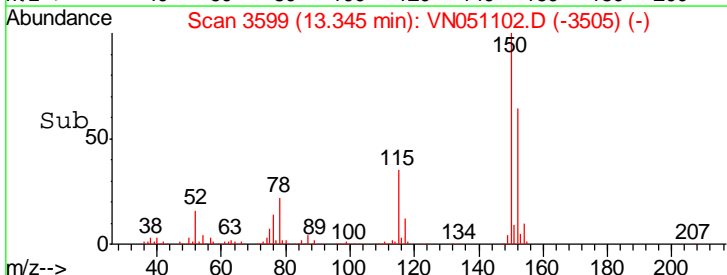
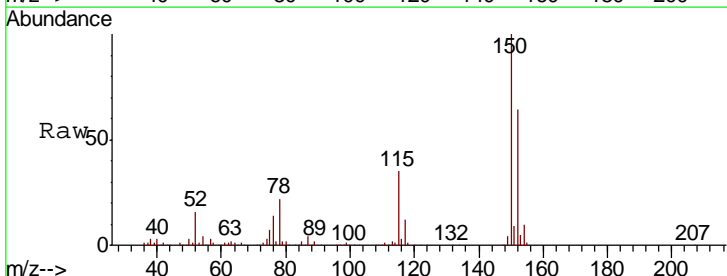
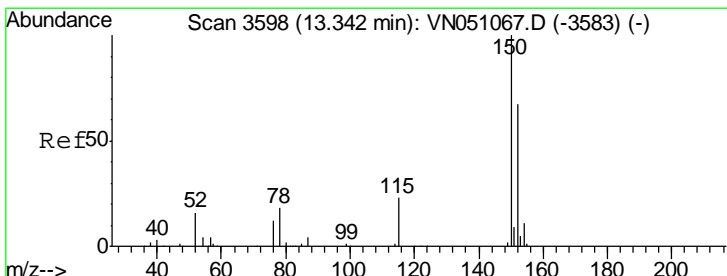
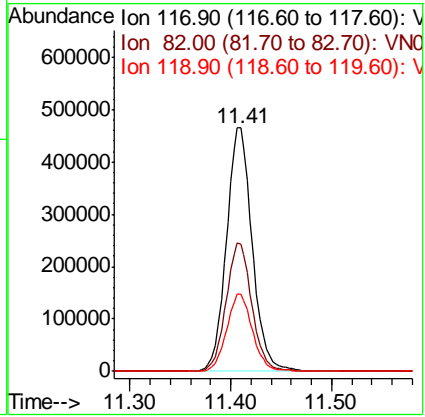




#63
 Chlorobenzene-d5
 Concen: 50.00 ug/l
 RT: 11.41 min Scan# 2997
 Delta R.T. 0.00 min
 Lab File: VN051102.D
 Acq: 11 Sep 2018 2:00

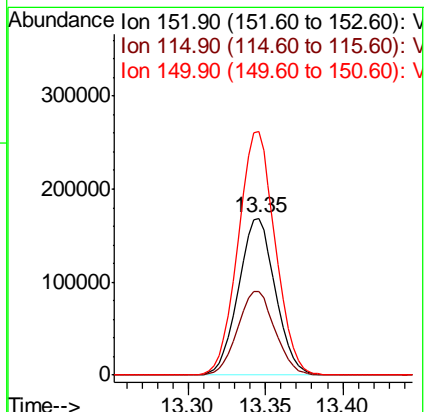
Instrument : MSVOA_N
 ClientSampled : PL-05-090718-D

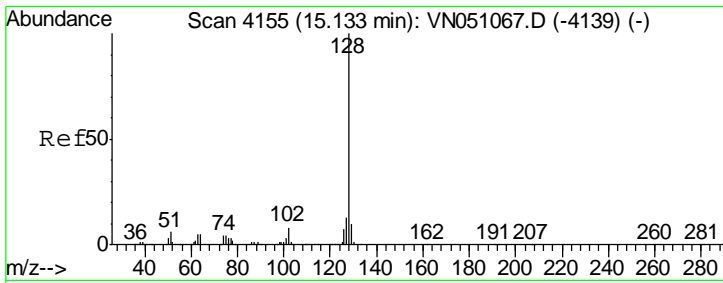
Tgt Ion	Resp	Lower	Upper
117	828463		
82	52.2	41.8	62.6
119	31.5	26.2	39.2



#72
 1,4-Dichlorobenzene-d4
 Concen: 50.00 ug/l
 RT: 13.35 min Scan# 3599
 Delta R.T. 0.00 min
 Lab File: VN051102.D
 Acq: 11 Sep 2018 2:00

Tgt Ion	Resp	Lower	Upper
152	278980		
115	54.4	28.2	84.7
150	156.3	0.0	349.0





#95
 Naphthalene
 Concen: 5.78 ug/l
 RT: 15.14 min Scan# 4156
 Delta R.T. 0.00 min
 Lab File: VN051102.D
 Acq: 11 Sep 2018 2:00

Instrument : MSVOA_N
 ClientSampled : PL-05-090718-D

Tot Ion:128 Resp: 5106

Ion	Ratio	Lower	Upper
128	100		
127	13.9	10.6	15.8
129	12.7	8.6	12.8

