

Data Path : Z:\VOASRV\HPCHEM1\MSVOA N\DATA\VN091019\
 Data File : VN057814.D
 Acq On : 9 Sep 2019 20:35
 Operator : JC/SP
 Sample : K4781-06
 Misc : 5.00mL/MSVOA N/WATER
 ALS Vial : 18 Sample Multiplier: 1

Instrument :
 MSVOA_N
 ClientSampled :

Quant Time: Sep 10 07:10:20 2019
 Quant Method : Z:\VOASRV\HPCHEM1\MSVOA_N\METHODS\82N091019W.M
 Quant Title : SW846 8260
 QLast Update : Tue Sep 10 03:02:13 2019
 Response via : Initial Calibration

Internal Standards	R.T.	QIon	Response	Conc	Units	Dev(Min)
1) Pentafluorobenzene	7.65	168	305220	50.00	ug/l	0.00
34) 1,4-Difluorobenzene	8.58	114	509511	50.00	ug/l	0.00
63) Chlorobenzene-d5	11.41	117	459601	50.00	ug/l	0.00
72) 1,4-Dichlorobenzene-d4	13.35	152	234417	50.00	ug/l	0.00

System Monitoring Compounds

33) 1,2-Dichloroethane-d4	8.01	65	335896	54.33	ug/l	0.00
Spiked Amount	50.000		Recovery	=	108.66%	
35) Dibromofluoromethane	7.58	113	235003	49.97	ug/l	0.00
Spiked Amount	50.000		Recovery	=	99.94%	
50) Toluene-d8	10.09	98	934233	51.17	ug/l	0.00
Spiked Amount	50.000		Recovery	=	102.34%	
62) 4-Bromofluorobenzene	12.40	95	297534	42.76	ug/l	0.00
Spiked Amount	50.000		Recovery	=	85.52%	

Target Compounds

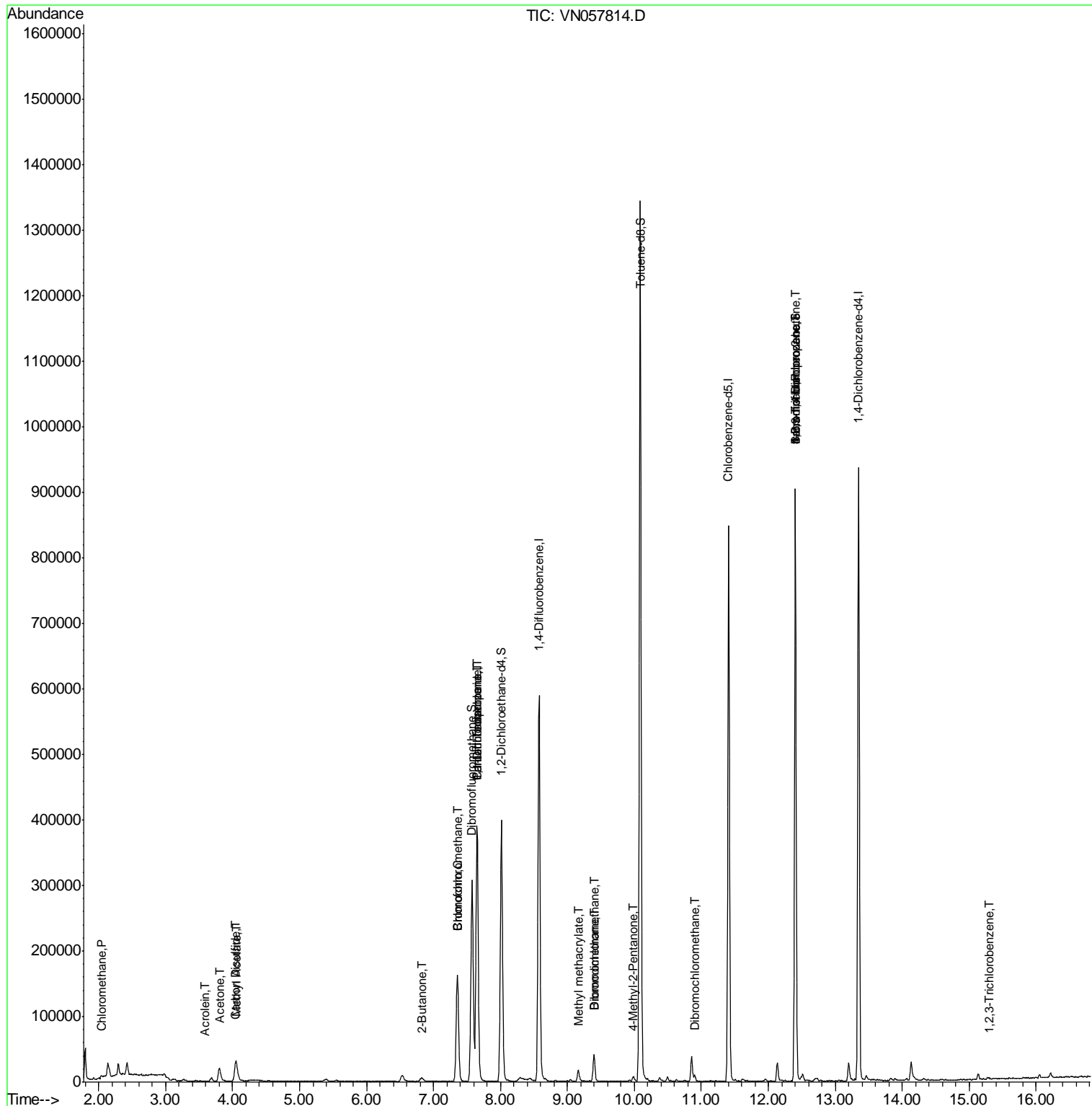
					Qvalue	
3) Chloromethane	2.03	50	1503	0.349	ug/l #	65
5) Bromomethane	2.53	94	30	Below Cal	#	2
13) Acrolein	3.58	56	260	0.410	ug/l #	61
16) Acetone	3.80	43	34655	17.100	ug/l	94
17) Carbon Disulfide	4.03	76	5670	1.276	ug/l #	88
18) Methyl Acetate	4.05	43	14092	2.608	ug/l #	53
20) Methylene Chloride	4.53	84	890	Below Cal	#	51
25) 2-Butanone	6.83	43	6572	2.241	ug/l	96
28) Bromochloromethane	7.36	49	14800	3.634	ug/l #	19
30) Chloroform	7.36	83	160208	18.796	ug/l	98
31) Cyclohexane	7.65	56	7983	Below Cal	#	13
36) 1,1-Dichloropropene	7.65	75	26913	4.555	ug/l #	50
38) Carbon Tetrachloride	7.65	117	30325	5.621	ug/l #	16
46) Dibromomethane	9.40	93	673	0.215	ug/l #	6
47) Bromodichloromethane	9.40	83	26916	4.309	ug/l	92
48) Methyl methacrylate	9.17	41	5549	1.065	ug/l #	47
51) 4-Methyl-2-Pentanone	9.99	43	7246	1.193	ug/l #	84
60) Dibromochloromethane	10.90	129	3826	0.868	ug/l	95
71) Bromoform	12.40	173	1845	0.709	ug/l #	1
76) 1,2,3-Trichloropropane	12.40	75	164256	30.975	ug/l #	100
81) trans-1,4-Dichloro-2-buten	12.40	75	164256	109.000	ug/l #	6
95) Naphthalene	15.13	128	7633	Below Cal	#	95
96) 1,2,3-Trichlorobenzene	15.30	180	404	1.082	ug/l #	84

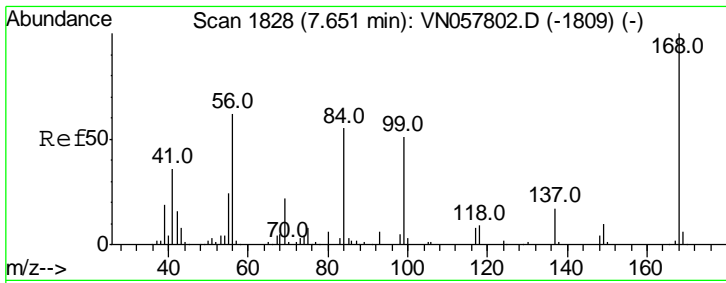
(#) = qualifier out of range (m) = manual integration (+) = signals summed

Data Path : Z:\VOASRV\HPCHEM1\MSVOA N\DATA\VN091019\
 Data File : VN057814.D
 Acq On : 9 Sep 2019 20:35
 Operator : JC/SP
 Sample : K4781-06
 Misc : 5.00mL/MSVOA N/WATER
 ALS Vial : 18 Sample Multiplier: 1

Instrument :
 MSVOA_N
 ClientSampleId :

Quant Time: Sep 10 07:10:20 2019
 Quant Method : Z:\VOASRV\HPCHEM1\MSVOA_N\METHODS\82N091019W.M
 Quant Title : SW846 8260
 QLast Update : Tue Sep 10 03:02:13 2019
 Response via : Initial Calibration

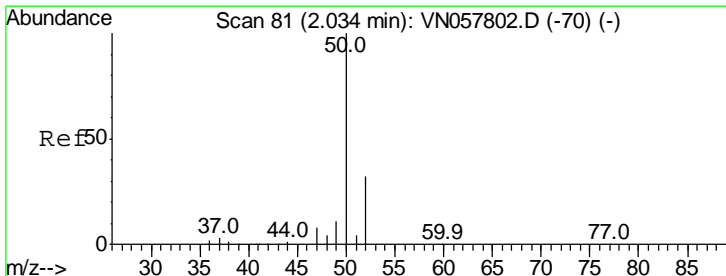
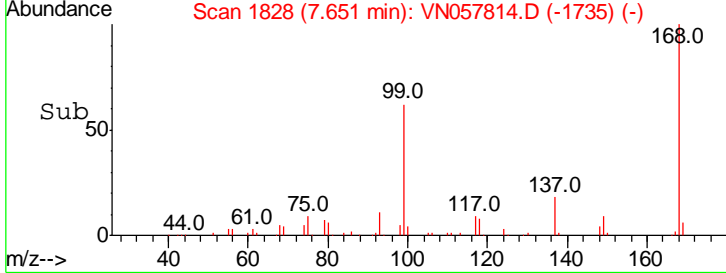
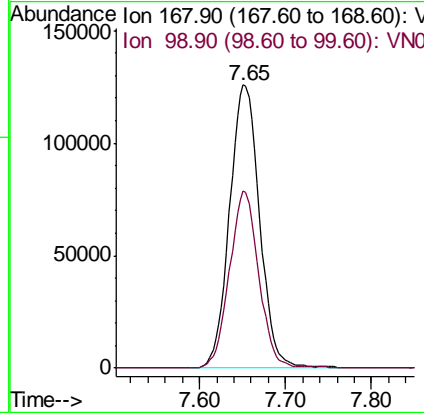
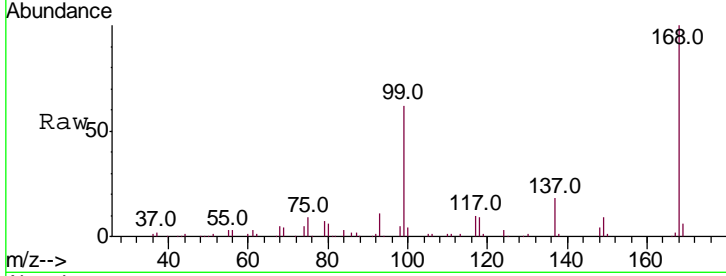




#1
 Pentafluorobenzene
 Concen: 50.000 ug/l
 RT: 7.65 min Scan# 1828
 Delta R.T. 0.00 min
 Lab File: VN057814.D
 Acq: 9 Sep 2019 20:35

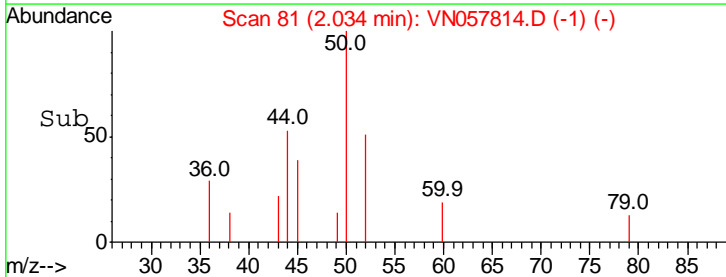
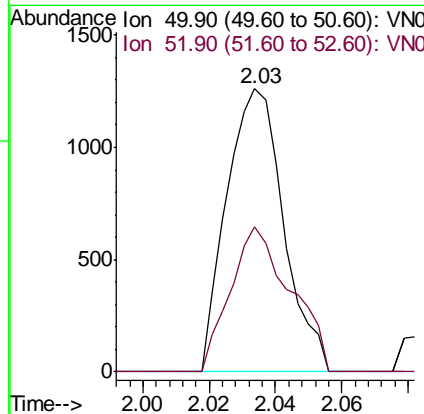
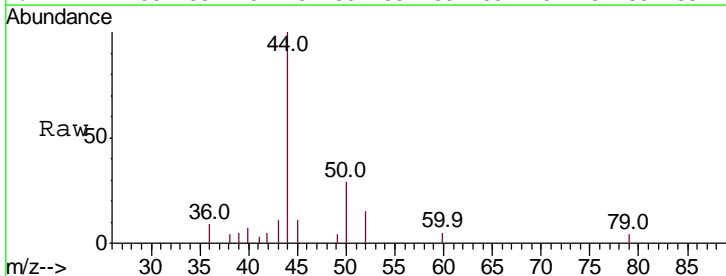
Instrument :
 MSVOA_N
 ClientSampled :

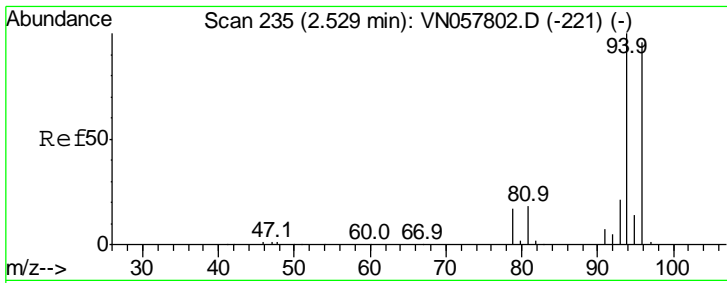
Tgt Ion: 168 Resp: 305220
 Ion Ratio Lower Upper
 168 100
 99 62.4 48.0 72.0



#3
 Chloromethane
 Concen: 0.349 ug/l
 RT: 2.03 min Scan# 81
 Delta R.T. 0.00 min
 Lab File: VN057814.D
 Acq: 9 Sep 2019 20:35

Tgt Ion: 50 Resp: 1503
 Ion Ratio Lower Upper
 50 100
 52 51.1 25.5 38.3#

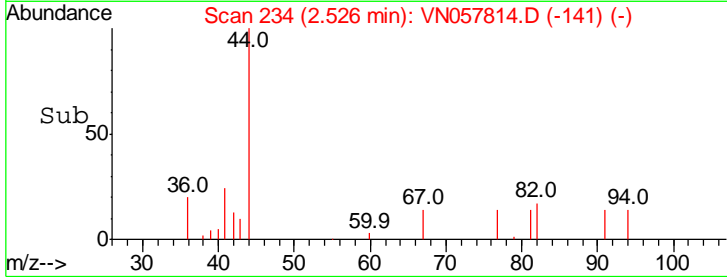
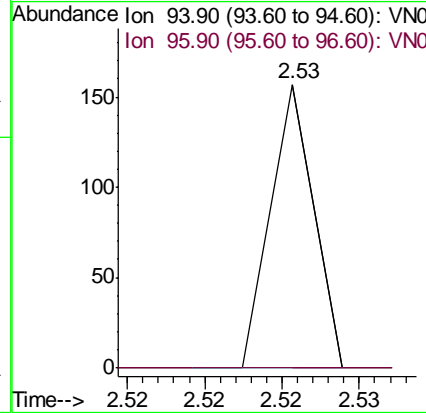
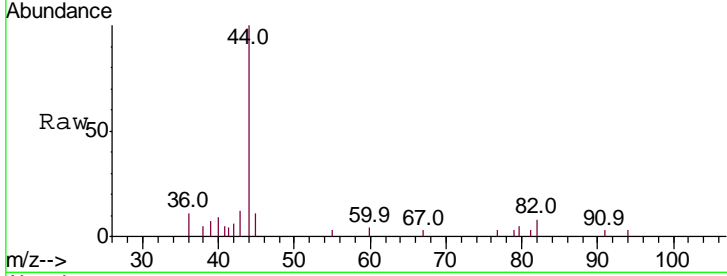




#5
 Bromomethane
 Concen: Below Cal
 RT: 2.53 min Scan# 234
 Delta R.T. -0.00 min
 Lab File: VN057814.D
 Acq: 9 Sep 2019 20:35

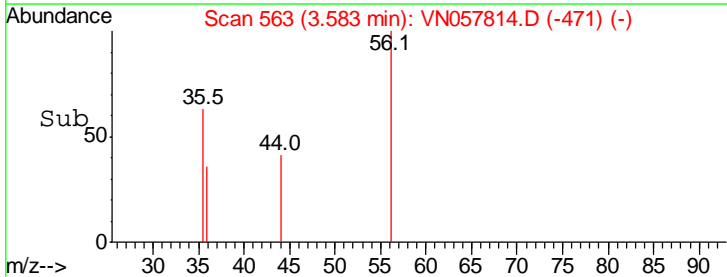
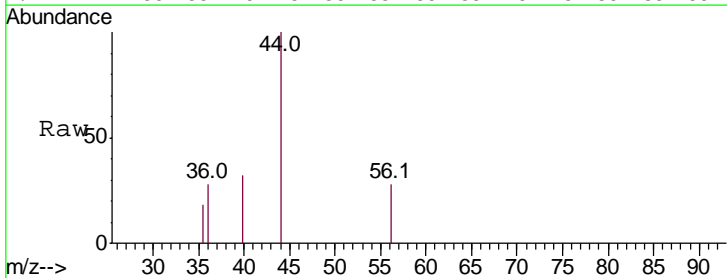
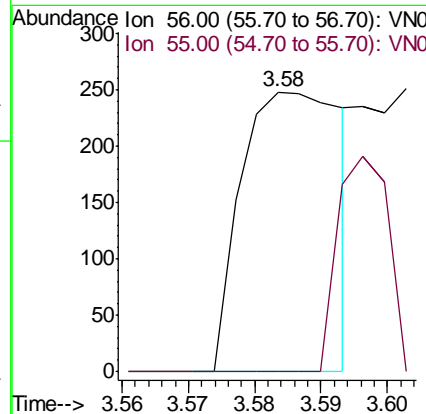
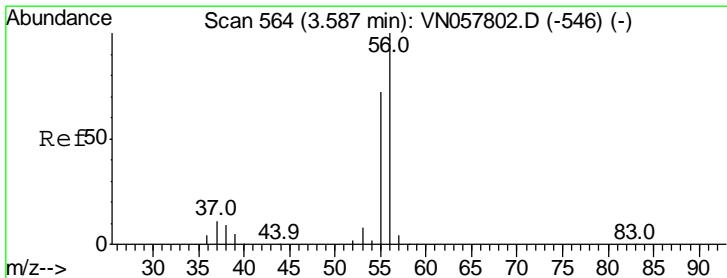
Instrument :
 MSVOA_N
 ClientSampled :

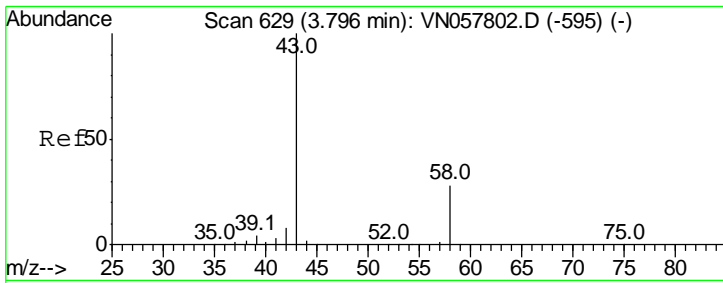
Tgt Ion: 94 Resp: 30
 Ion Ratio Lower Upper
 94 100
 96 0.0 77.0 115.4#



#13
 Acrolein
 Concen: 0.410 ug/l
 RT: 3.58 min Scan# 563
 Delta R.T. -0.00 min
 Lab File: VN057814.D
 Acq: 9 Sep 2019 20:35

Tgt Ion: 56 Resp: 260
 Ion Ratio Lower Upper
 56 100
 55 38.8 57.3 85.9#

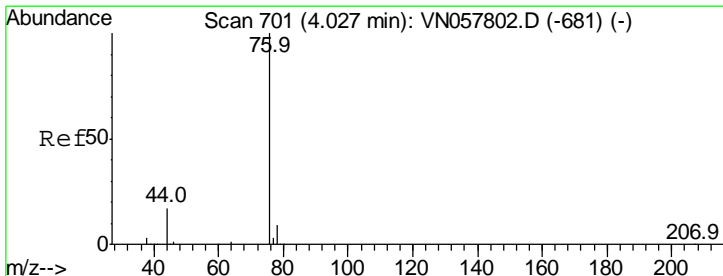
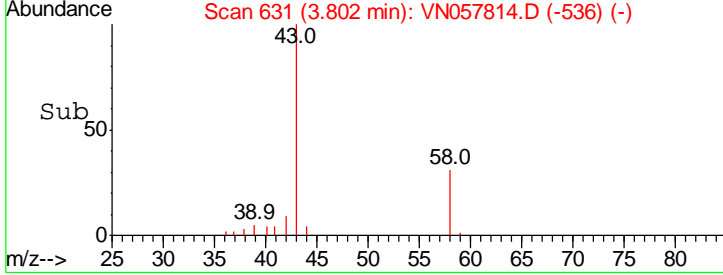
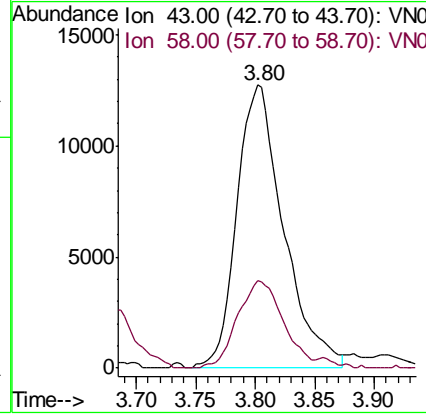
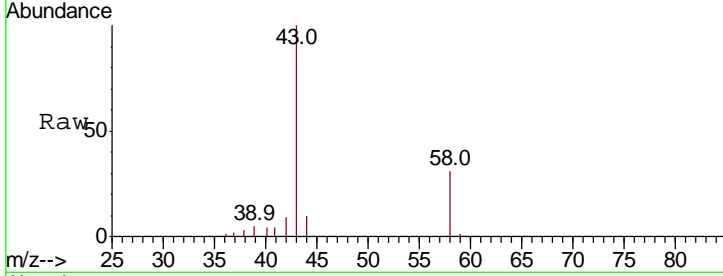




#16
 Acetone
 Concen: 17.100 ug/l
 RT: 3.80 min Scan# 631
 Delta R.T. 0.01 min
 Lab File: VN057814.D
 Acq: 9 Sep 2019 20:35

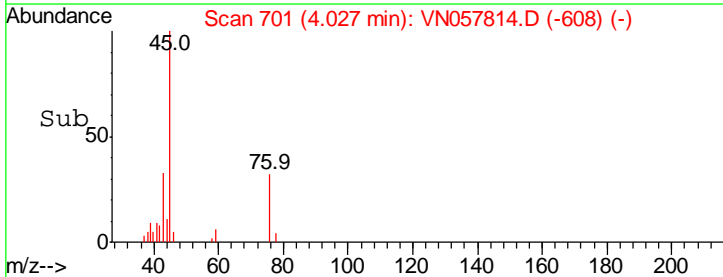
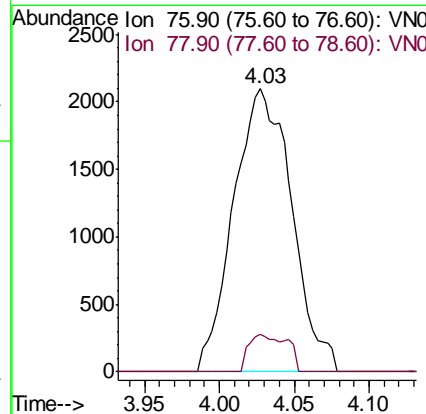
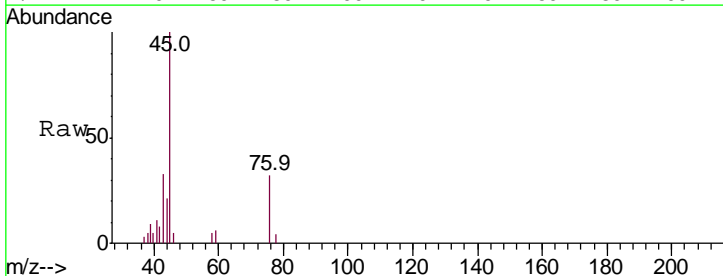
Instrument :
 MSVOA_N
 ClientSampled :

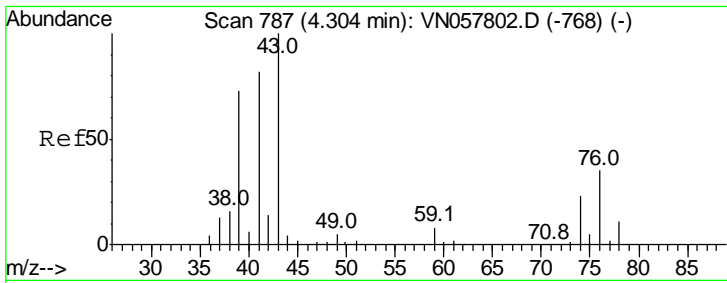
Tgt Ion	43	58	Ratio	Lower	Upper
43	100				
58	30.9		22.2	33.2	



#17
 Carbon Disulfide
 Concen: 1.276 ug/l
 RT: 4.03 min Scan# 701
 Delta R.T. 0.00 min
 Lab File: VN057814.D
 Acq: 9 Sep 2019 20:35

Tgt Ion	76	78	Ratio	Lower	Upper
76	100				
78	13.1		7.1	10.7	#

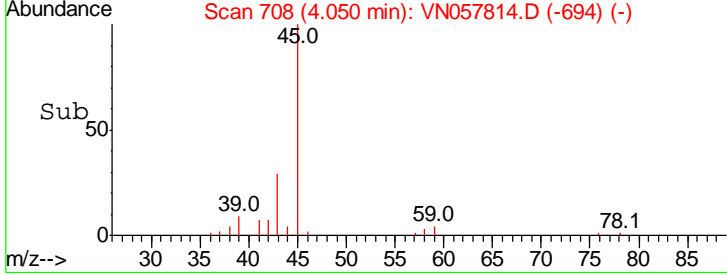
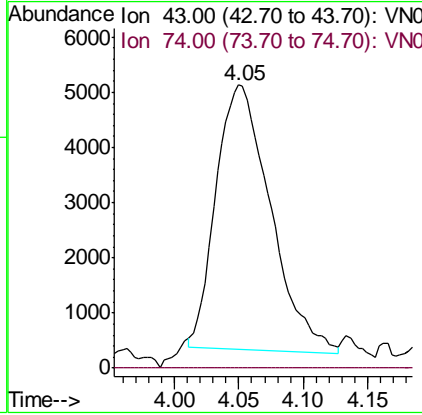
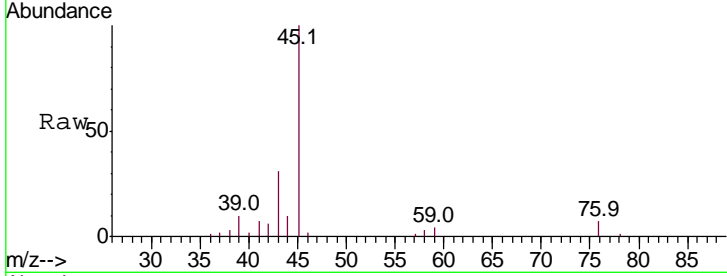




#18
 Methyl Acetate
 Concen: 2.608 ug/l
 RT: 4.05 min Scan# 708
 Delta R.T. -0.25 min
 Lab File: VN057814.D
 Acq: 9 Sep 2019 20:35

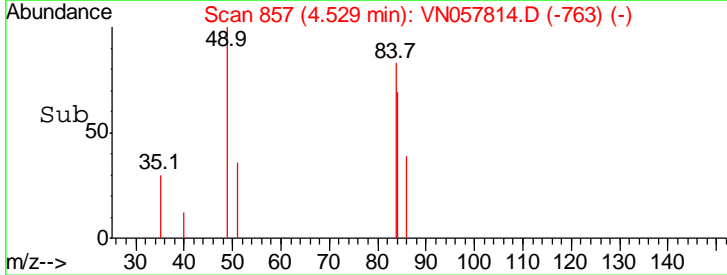
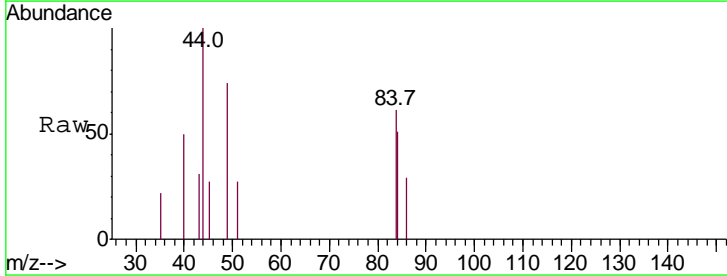
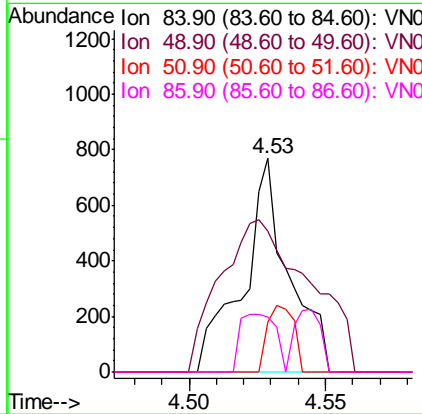
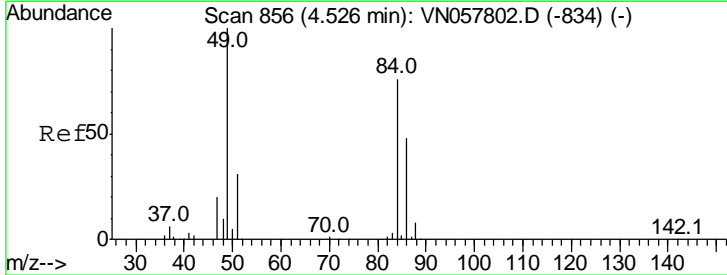
Instrument :
 MSVOA_N
 ClientSampled :

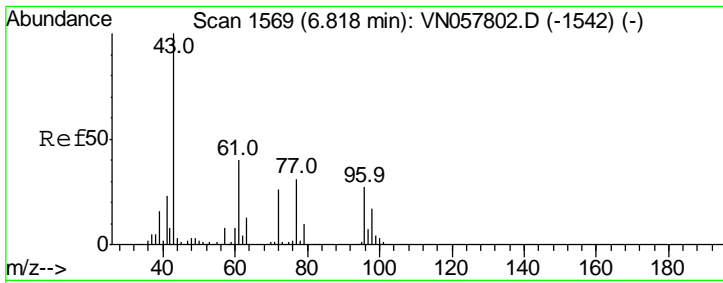
Tgt Ion	Resp	Lower	Upper
43	100		
74	0.0	17.9	26.9#



#20
 Methylene Chloride
 Concen: Below Cal
 RT: 4.53 min Scan# 857
 Delta R.T. 0.00 min
 Lab File: VN057814.D
 Acq: 9 Sep 2019 20:35

Tgt Ion	Resp	Lower	Upper
84	100		
49	65.8	104.8	157.2#
51	23.7	33.0	49.4#
86	25.6	50.5	75.7#

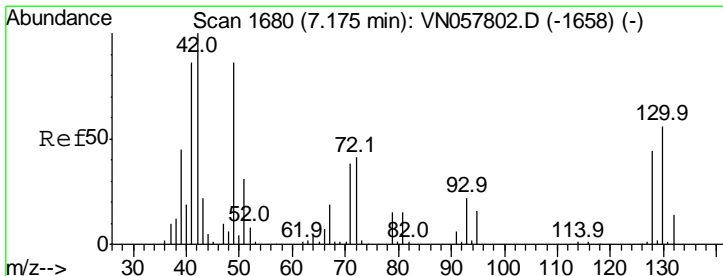
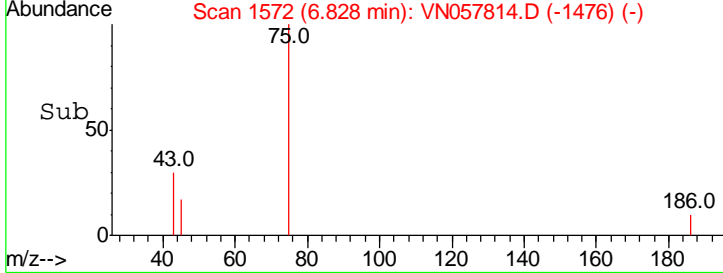
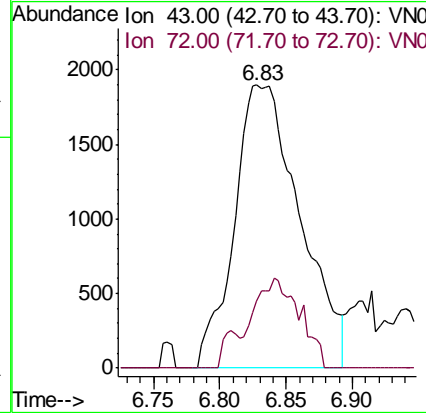
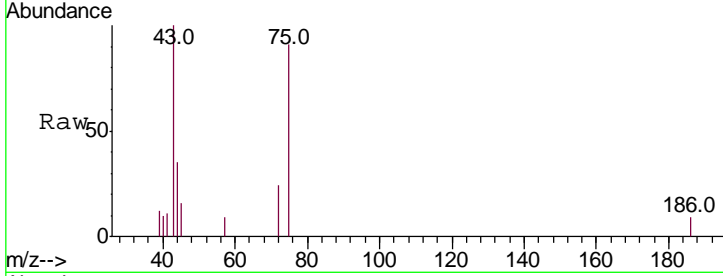




#25
 2-Butanone
 Concen: 2.241 ug/l
 RT: 6.83 min Scan# 1572
 Delta R.T. 0.01 min
 Lab File: VN057814.D
 Acq: 9 Sep 2019 20:35

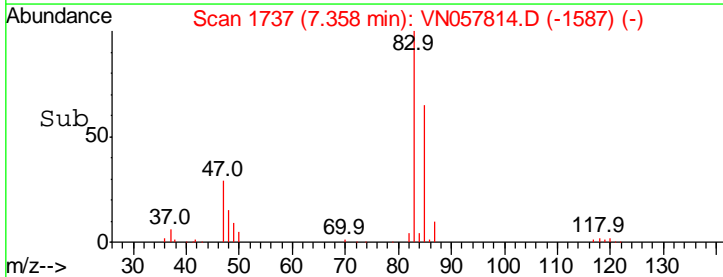
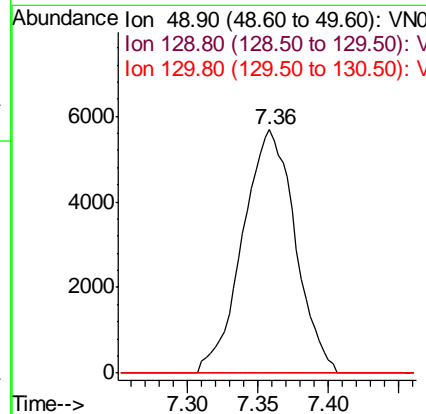
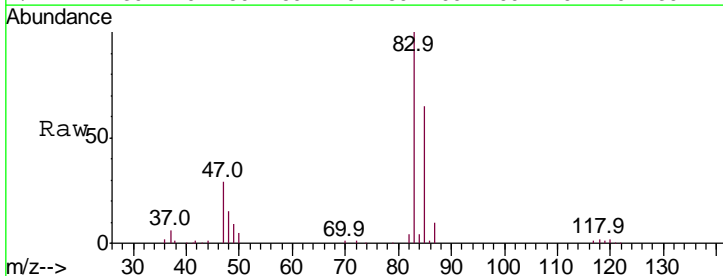
Instrument :
 MSVOA_N
 ClientSampled :

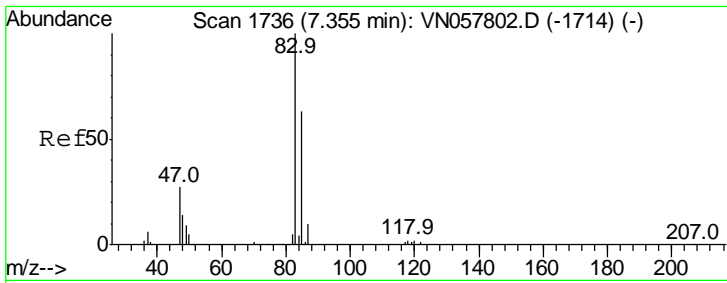
Tgt Ion	Resp	Lower	Upper
43	100		
72	23.8	20.6	30.8



#28
 Bromochloromethane
 Concen: 3.634 ug/l
 RT: 7.36 min Scan# 1737
 Delta R.T. 0.18 min
 Lab File: VN057814.D
 Acq: 9 Sep 2019 20:35

Tgt Ion	Resp	Lower	Upper
49	100		
129	0.0	0.0	3.8
130	0.0	53.0	79.6#

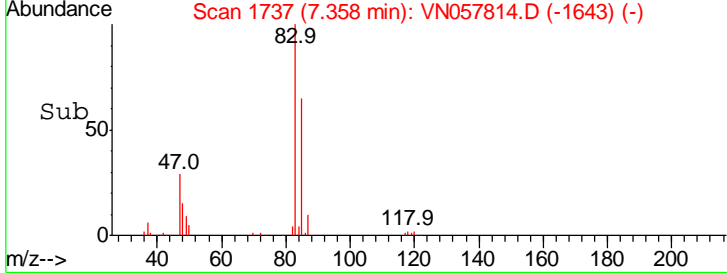
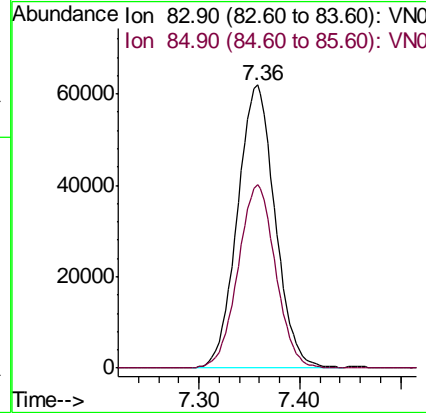
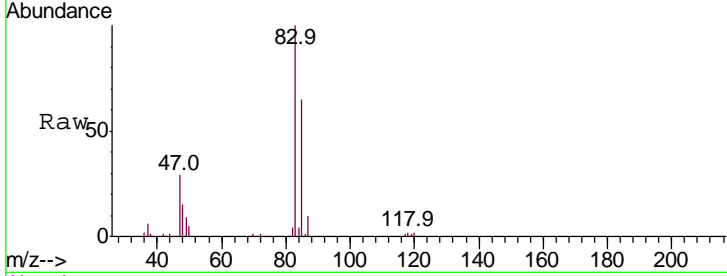




#30
 Chloroform
 Concen: 18.796 ug/l
 RT: 7.36 min Scan# 1737
 Delta R.T. 0.00 min
 Lab File: VN057814.D
 Acq: 9 Sep 2019 20:35

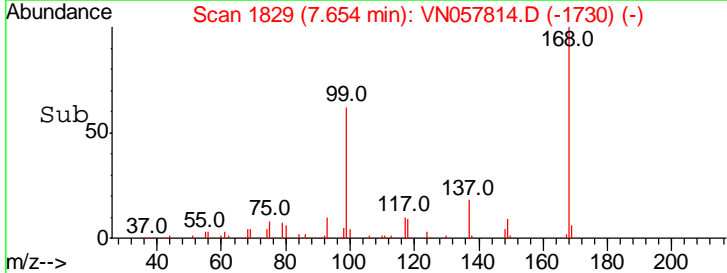
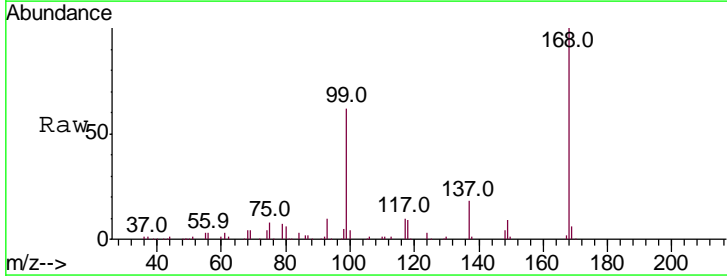
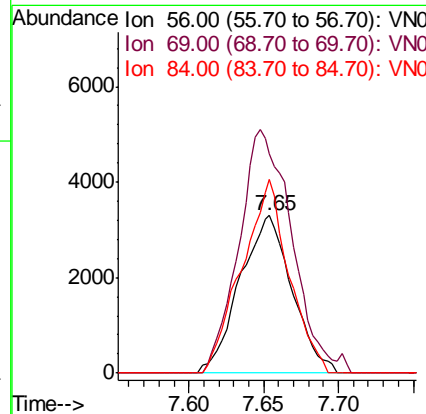
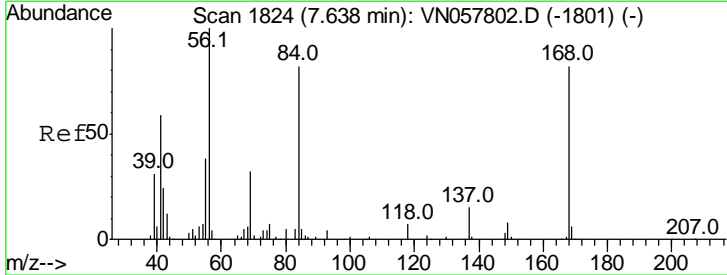
Instrument :
 MSVOA_N
 ClientSampled :

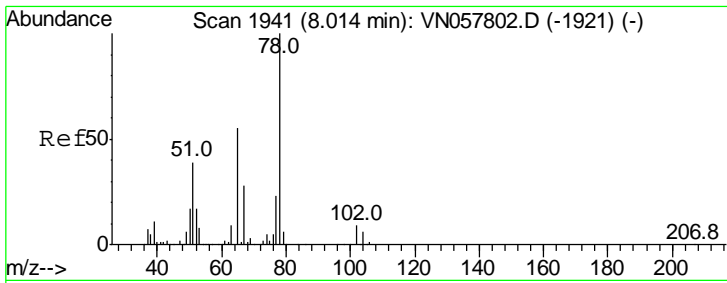
Tgt Ion	Resp	Lower	Upper
83	160208		
83	100		
85	64.7	50.6	75.8



#31
 Cyclohexane
 Concen: Below Cal
 RT: 7.65 min Scan# 1829
 Delta R.T. 0.02 min
 Lab File: VN057814.D
 Acq: 9 Sep 2019 20:35

Tgt Ion	Resp	Lower	Upper
56	7983		
56	100		
69	139.2	25.9	38.9#
84	123.0	65.6	98.4#

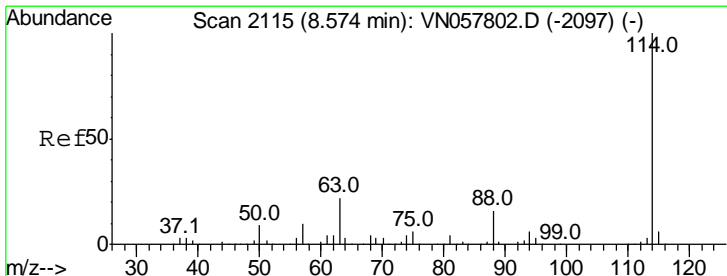
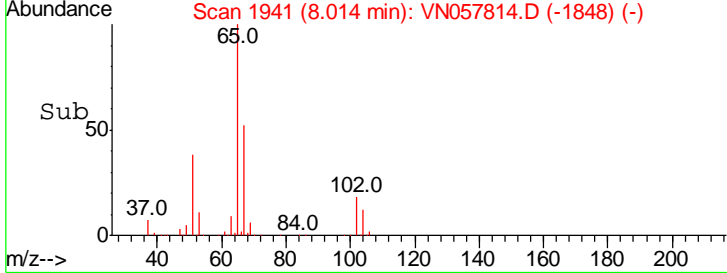
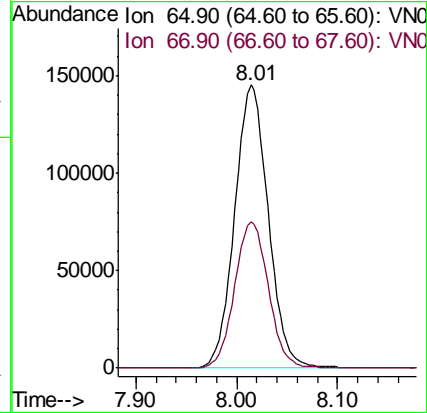
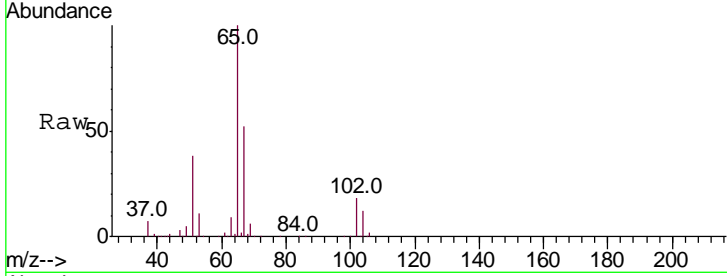




#33
 1,2-Dichloroethane-d4
 Concen: 54.335 ug/l
 RT: 8.01 min Scan# 1941
 Delta R.T. 0.00 min
 Lab File: VN057814.D
 Acq: 9 Sep 2019 20:35

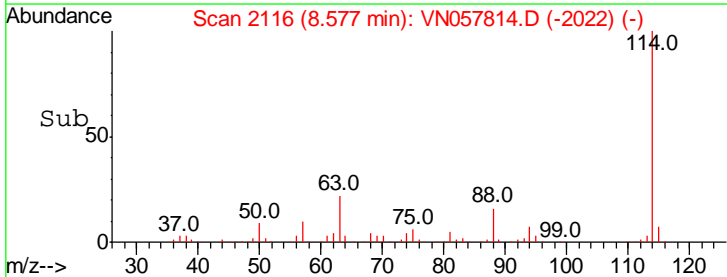
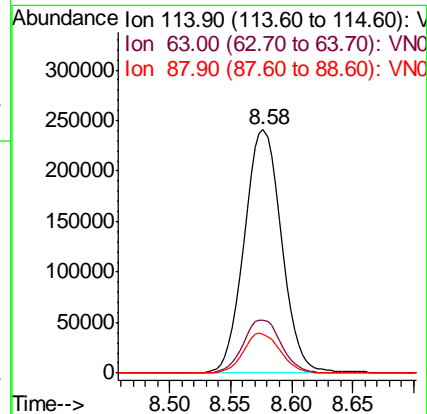
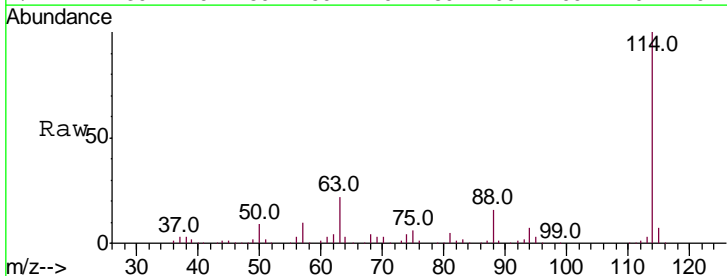
Instrument :
 MSVOA_N
 ClientSampled :

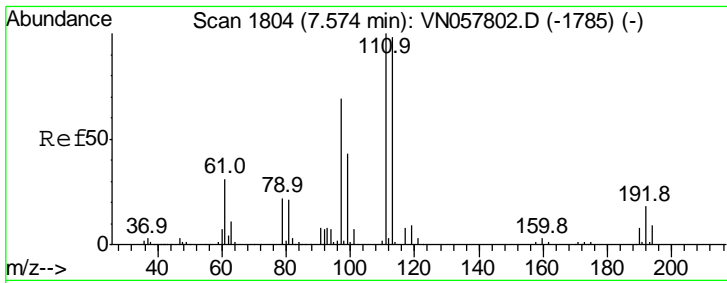
Tgt Ion	Resp	Lower	Upper
65	100		
67	51.8	0.0	104.0



#34
 1,4-Difluorobenzene
 Concen: 50.000 ug/l
 RT: 8.58 min Scan# 2116
 Delta R.T. 0.00 min
 Lab File: VN057814.D
 Acq: 9 Sep 2019 20:35

Tgt Ion	Resp	Lower	Upper
114	100		
63	22.0	0.0	44.0
88	16.1	0.0	31.4

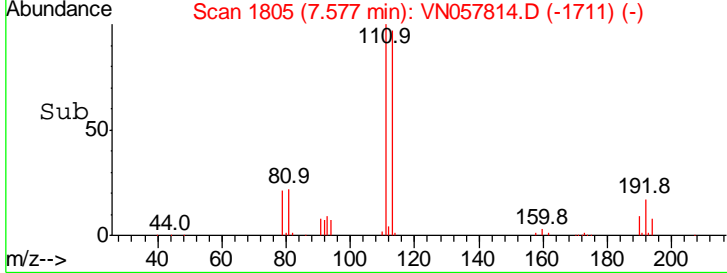
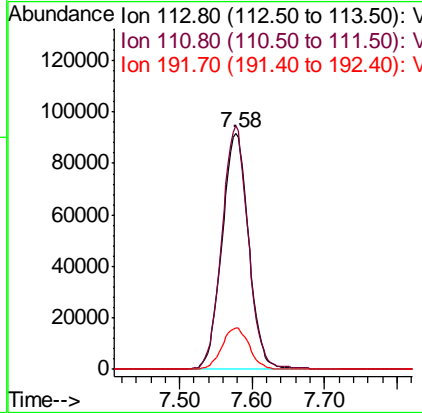
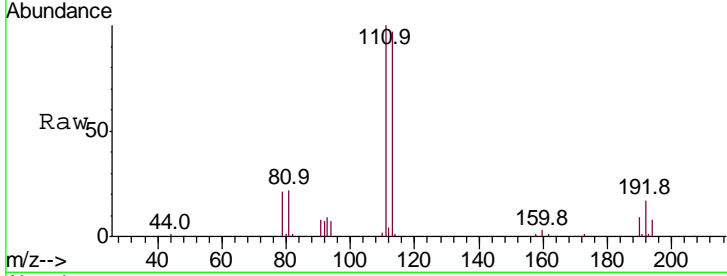




#35
 Dibromofluoromethane
 Concen: 49.973 ug/l
 RT: 7.58 min Scan# 1805
 Delta R.T. 0.00 min
 Lab File: VN057814.D
 Acq: 9 Sep 2019 20:35

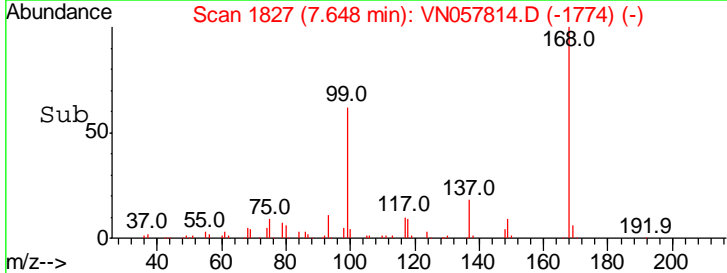
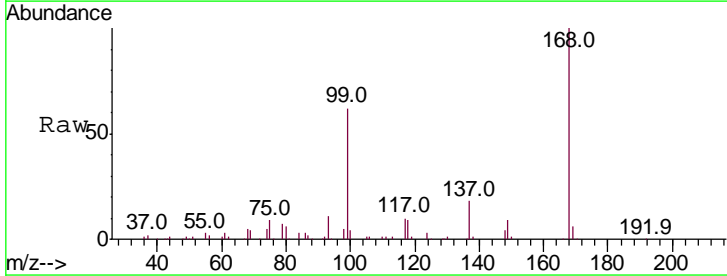
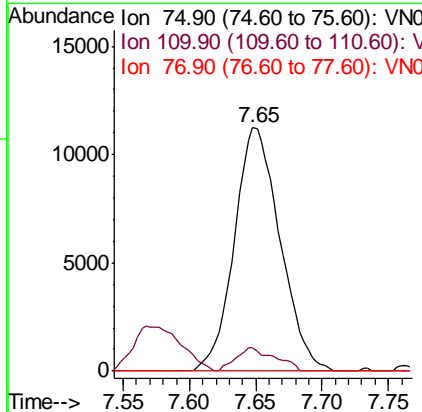
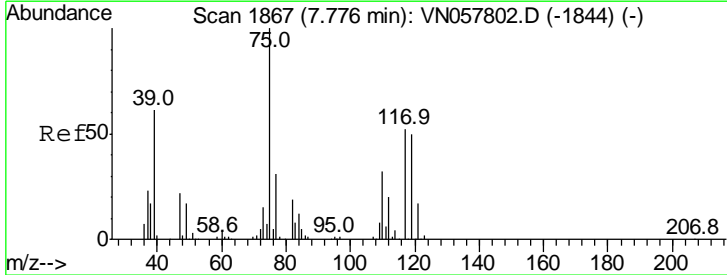
Instrument :
 MSVOA_N
 ClientSampled :

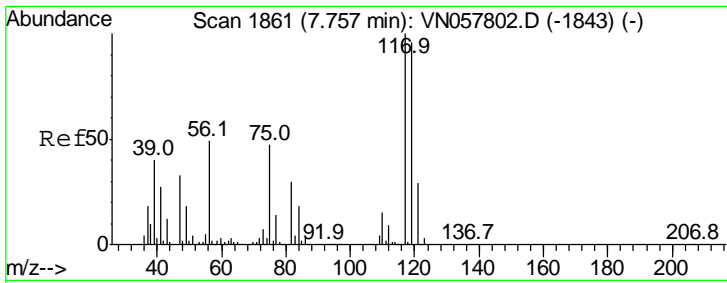
Tgt Ion	Resp	Lower	Upper
113	100		
111	101.7	81.3	121.9
192	17.9	14.6	22.0



#36
 1,1-Dichloropropene
 Concen: 4.555 ug/l
 RT: 7.65 min Scan# 1827
 Delta R.T. -0.13 min
 Lab File: VN057814.D
 Acq: 9 Sep 2019 20:35

Tgt Ion	Resp	Lower	Upper
75	100		
110	8.2	16.3	48.9#
77	0.0	25.0	37.4#

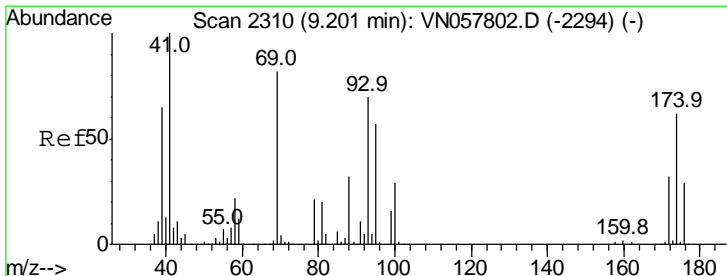
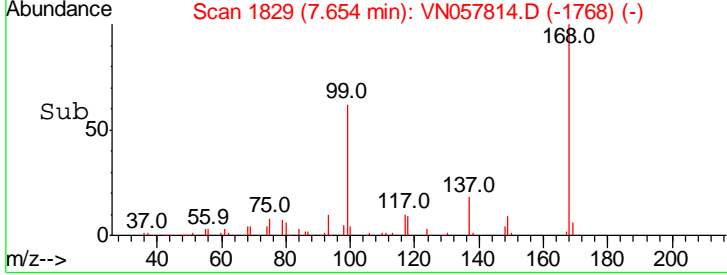
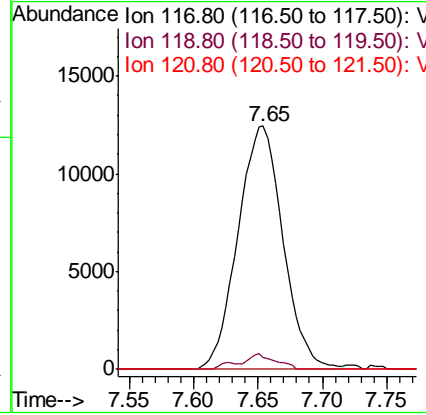
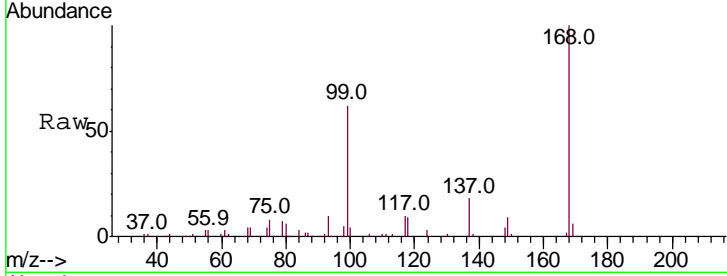




#38
 Carbon Tetrachloride
 Concen: 5.621 ug/l
 RT: 7.65 min Scan# 1829
 Delta R.T. -0.10 min
 Lab File: VN057814.D
 Acq: 9 Sep 2019 20:35

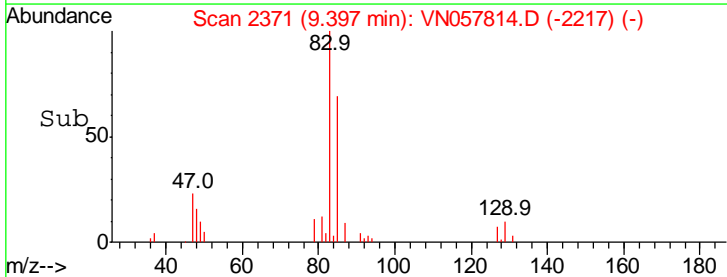
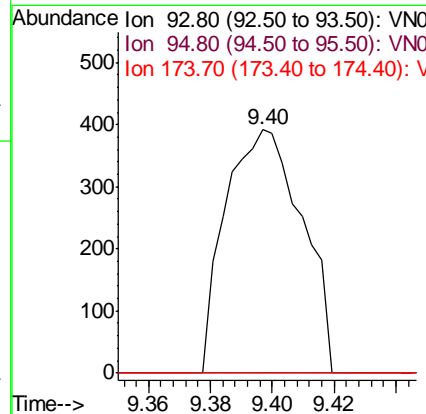
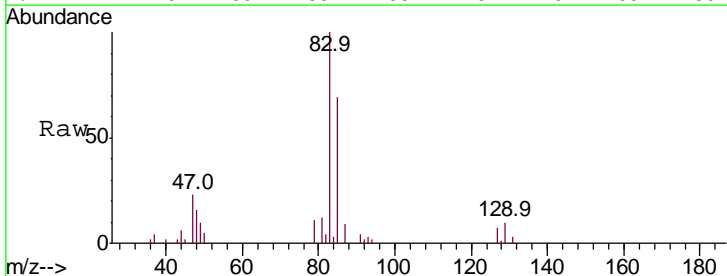
Instrument :
 MSVOA_N
 ClientSampled :

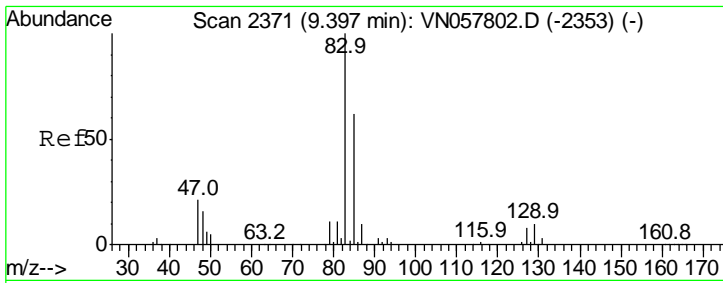
Tgt Ion	Resp	Lower	Upper
117	100		
119	5.0	76.9	115.3#
121	0.0	23.4	35.2#



#46
 Dibromomethane
 Concen: 0.215 ug/l
 RT: 9.40 min Scan# 2371
 Delta R.T. 0.20 min
 Lab File: VN057814.D
 Acq: 9 Sep 2019 20:35

Tgt Ion	Resp	Lower	Upper
93	100		
95	0.0	65.9	98.9#
174	0.0	71.8	107.6#

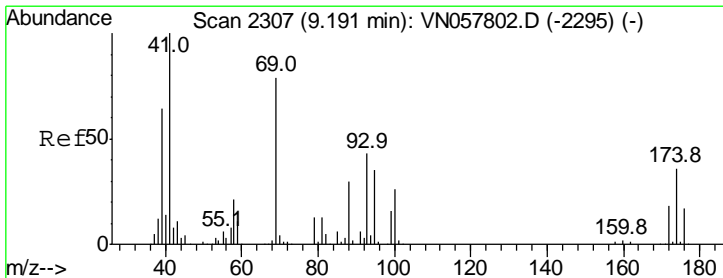
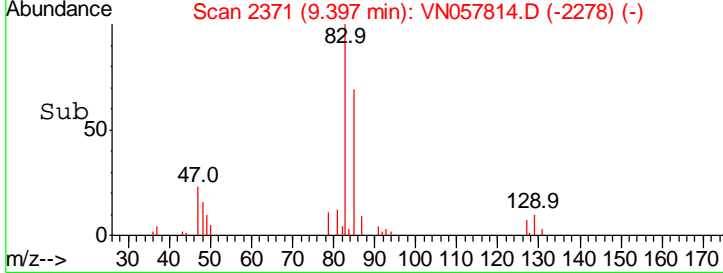
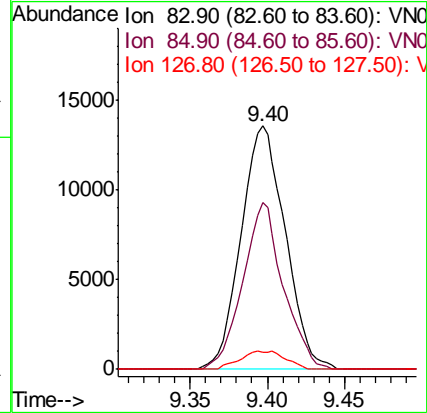
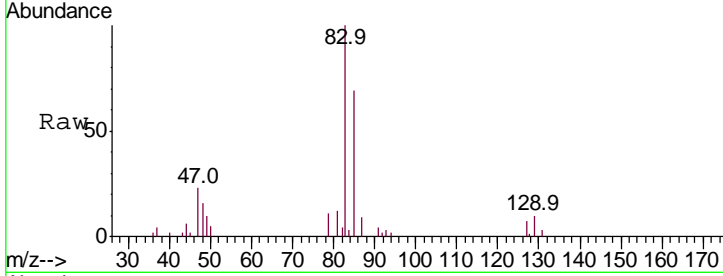




#47
 Bromodichloromethane
 Concen: 4.309 ug/l
 RT: 9.40 min Scan# 2371
 Delta R.T. 0.00 min
 Lab File: VN057814.D
 Acq: 9 Sep 2019 20:35

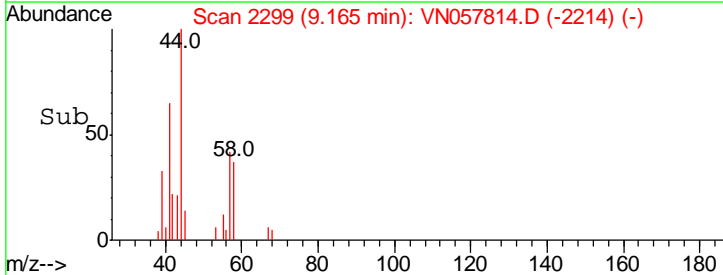
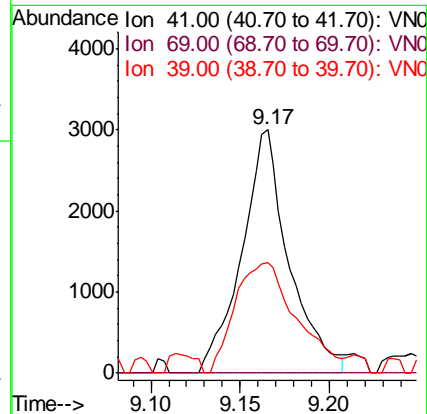
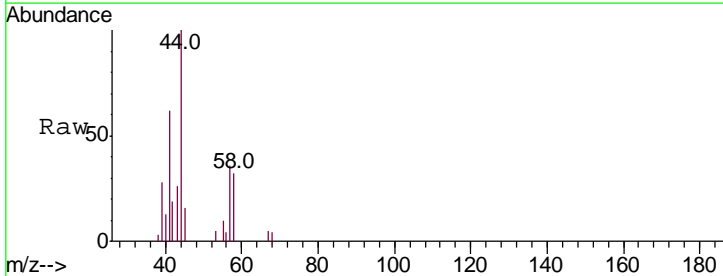
Instrument :
 MSVOA_N
 ClientSampled :

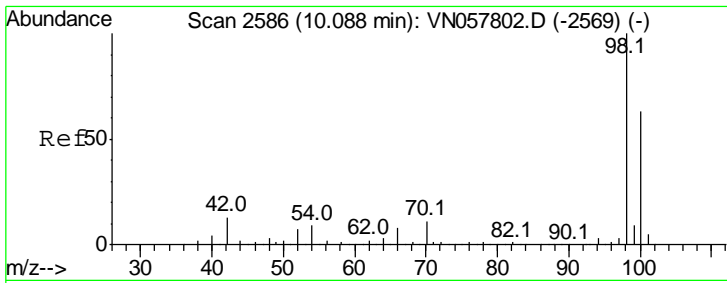
Tgt Ion	Resp	Lower	Upper
83	100		
85	68.7	49.9	74.9
127	7.1	6.5	9.7



#48
 Methyl methacrylate
 Concen: 1.065 ug/l
 RT: 9.17 min Scan# 2299
 Delta R.T. -0.03 min
 Lab File: VN057814.D
 Acq: 9 Sep 2019 20:35

Tgt Ion	Resp	Lower	Upper
41	100		
69	0.0	62.7	94.1#
39	59.0	52.7	79.1

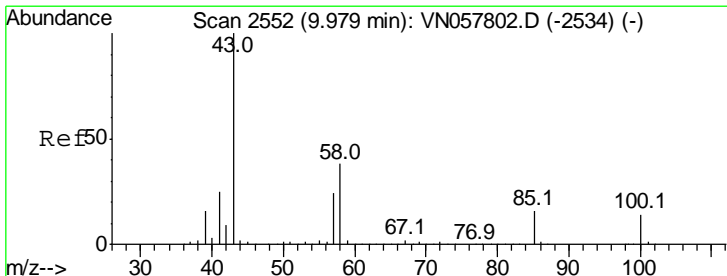
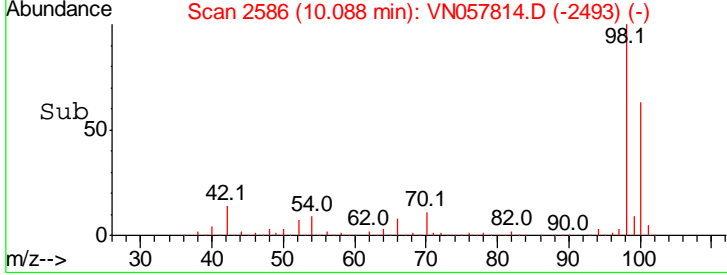
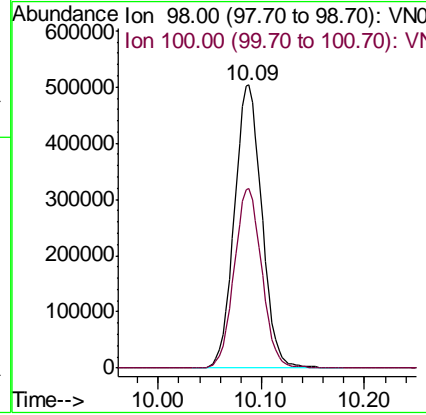
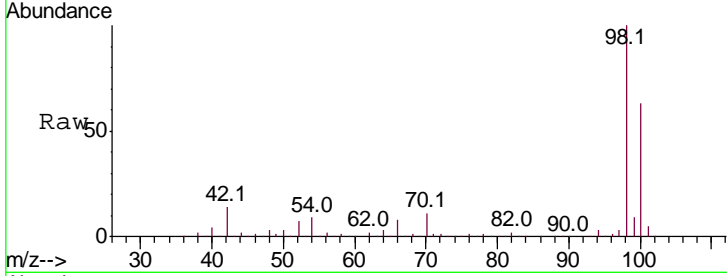




#50
 Toluene-d8
 Concen: 51.169 ug/l
 RT: 10.09 min Scan# 2586
 Delta R.T. 0.00 min
 Lab File: VN057814.D
 Acq: 9 Sep 2019 20:35

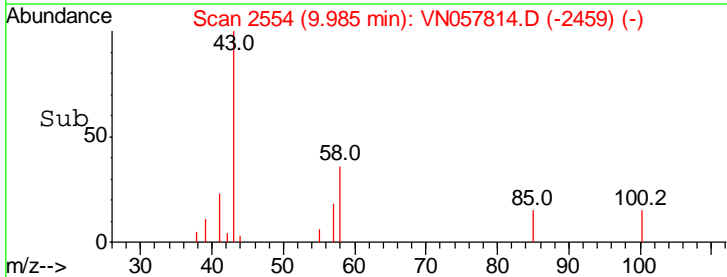
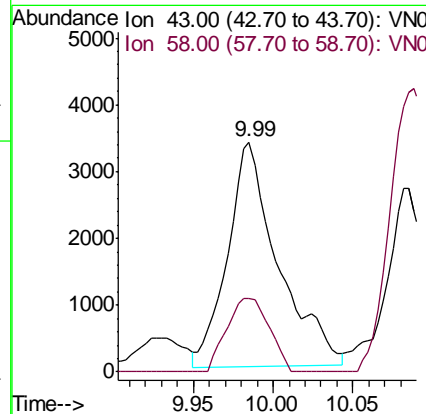
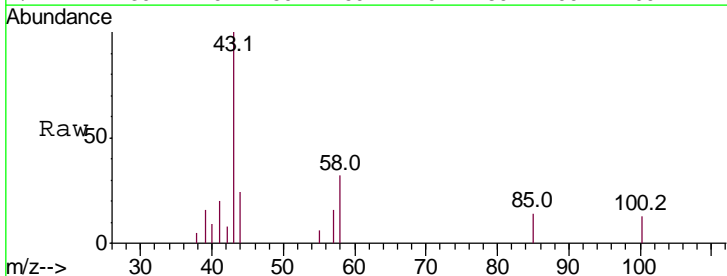
Instrument : MSVOA_N
 ClientSampled :

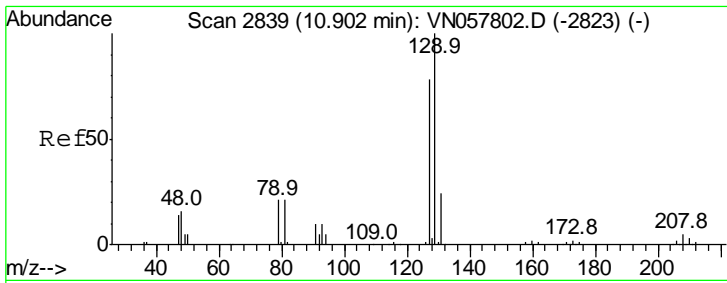
Tgt Ion: 98 Resp: 934233
 Ion Ratio Lower Upper
 98 100
 100 63.9 50.3 75.5



#51
 4-Methyl-2-Pentanone
 Concen: 1.193 ug/l
 RT: 9.99 min Scan# 2554
 Delta R.T. 0.01 min
 Lab File: VN057814.D
 Acq: 9 Sep 2019 20:35

Tgt Ion: 43 Resp: 7246
 Ion Ratio Lower Upper
 43 100
 58 27.5 29.8 44.6#

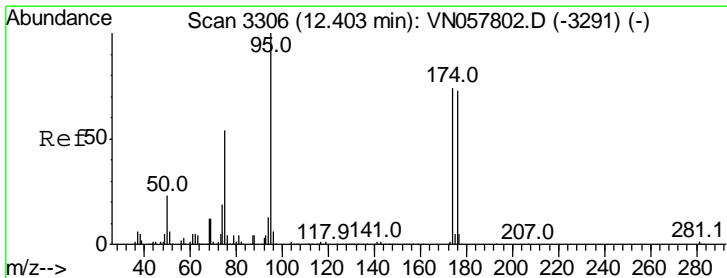
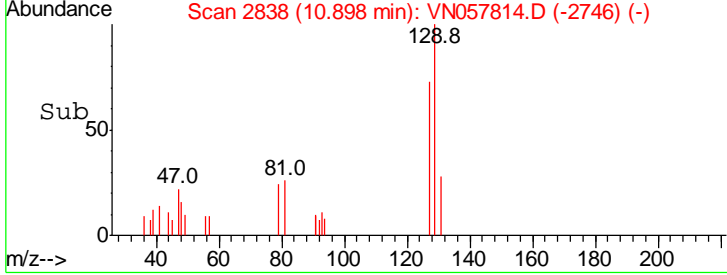
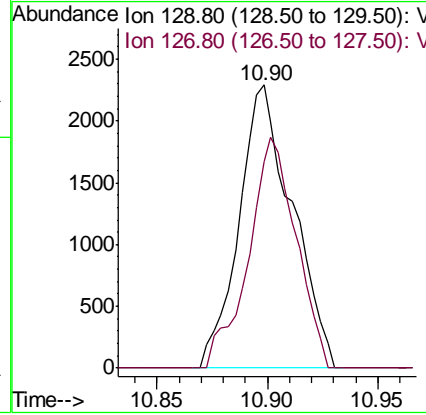
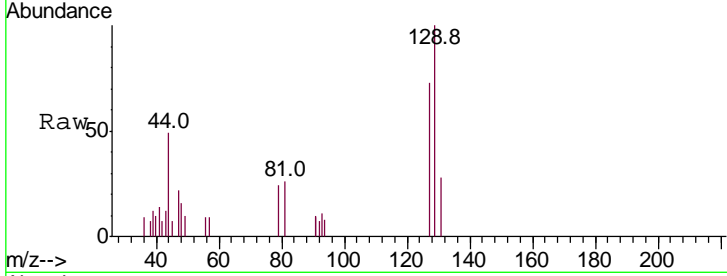




#60
 Dibromochloromethane
 Concen: 0.868 ug/l
 RT: 10.90 min Scan# 2838
 Delta R.T. -0.00 min
 Lab File: VN057814.D
 Acq: 9 Sep 2019 20:35

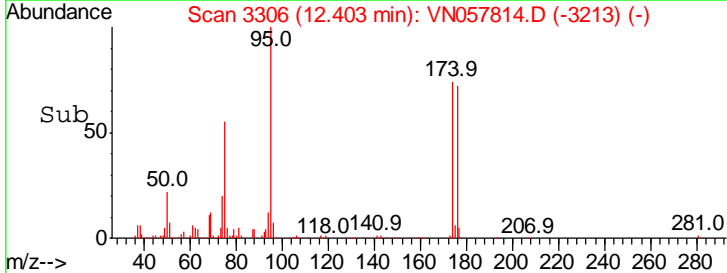
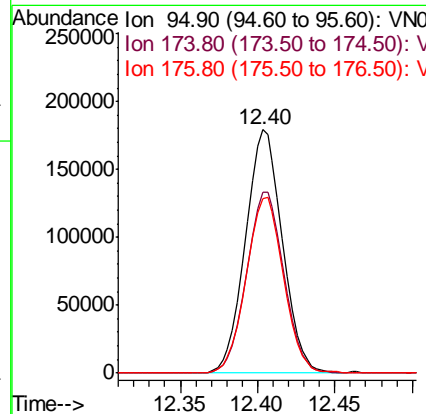
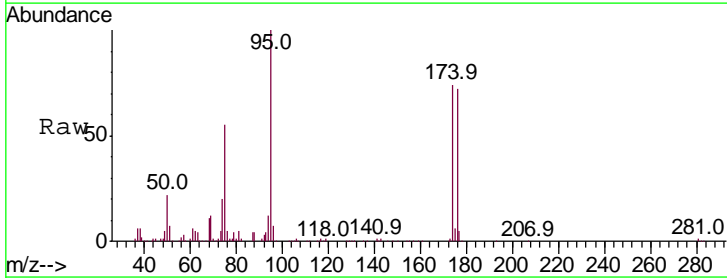
Instrument :
 MSVOA_N
 ClientSampled :

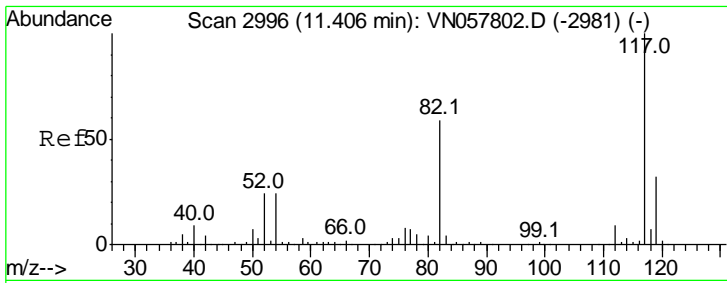
Tgt Ion: 129 Resp: 3826
 Ion Ratio Lower Upper
 129 100
 127 72.8 38.6 116.0



#62
 4-Bromofluorobenzene
 Concen: 42.762 ug/l
 RT: 12.40 min Scan# 3306
 Delta R.T. 0.00 min
 Lab File: VN057814.D
 Acq: 9 Sep 2019 20:35

Tgt Ion: 95 Resp: 297534
 Ion Ratio Lower Upper
 95 100
 174 75.3 0.0 150.2
 176 73.3 0.0 146.0

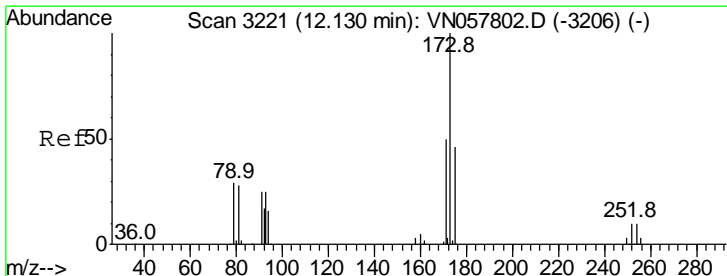
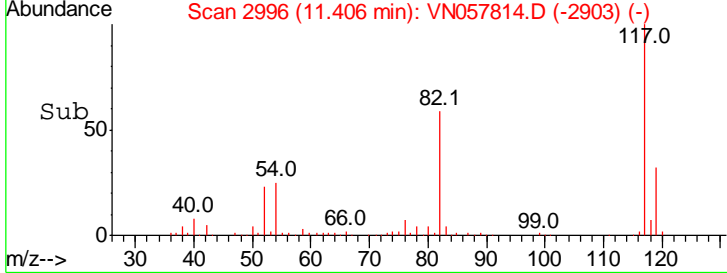
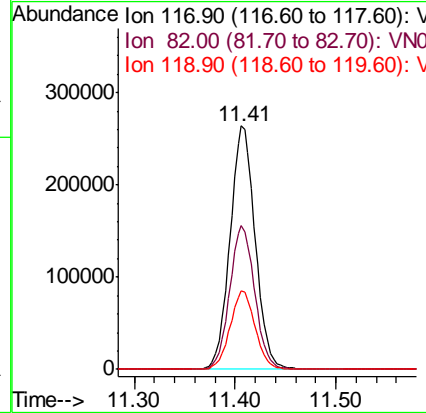
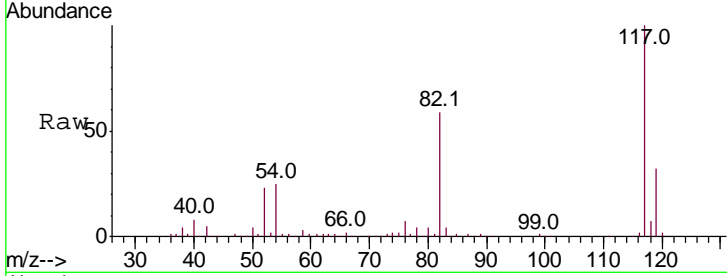




#63
 Chlorobenzene-d5
 Concen: 50.000 ug/l
 RT: 11.41 min Scan# 2996
 Delta R.T. 0.00 min
 Lab File: VN057814.D
 Acq: 9 Sep 2019 20:35

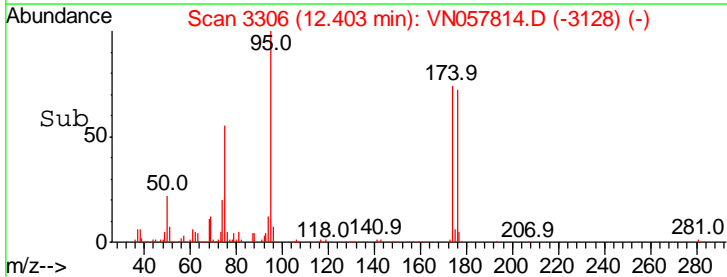
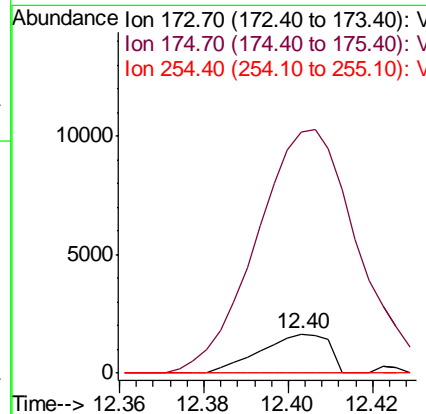
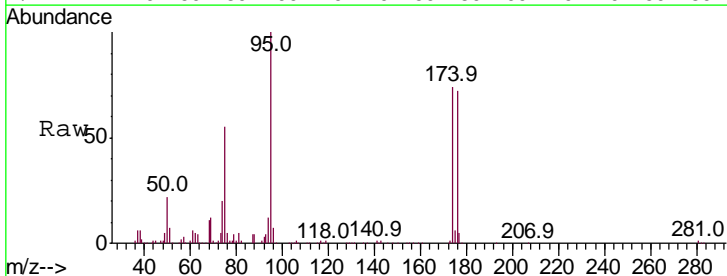
Instrument :
 MSVOA_N
 ClientSampled :

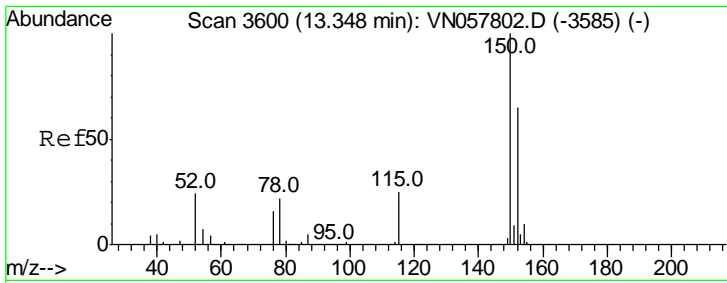
Tgt Ion	Resp	Lower	Upper
117	100		
82	58.8	47.2	70.8
119	32.0	25.3	37.9



#71
 Bromoform
 Concen: 0.709 ug/l
 RT: 12.40 min Scan# 3306
 Delta R.T. 0.27 min
 Lab File: VN057814.D
 Acq: 9 Sep 2019 20:35

Tgt Ion	Resp	Lower	Upper
173	100		
175	815.3	23.5	70.6#
254	0.0	0.1	0.1#

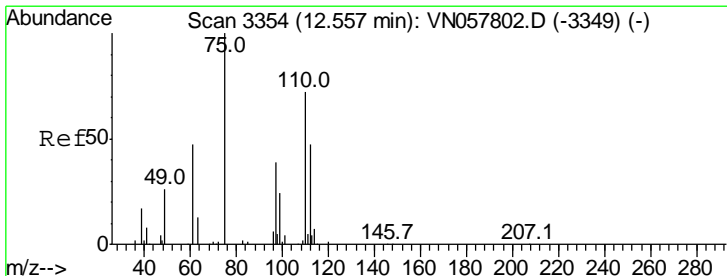
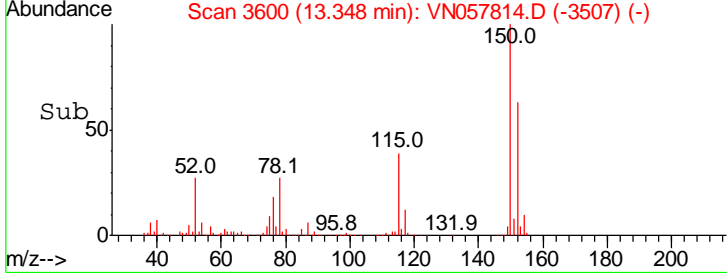
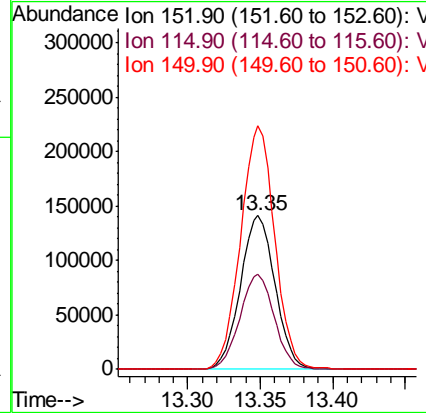
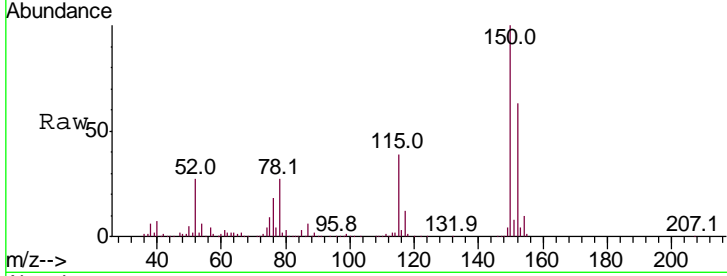




#72
 1,4-Dichlorobenzene-d4
 Concen: 50.000 ug/l
 RT: 13.35 min Scan# 3600
 Delta R.T. 0.00 min
 Lab File: VN057814.D
 Acq: 9 Sep 2019 20:35

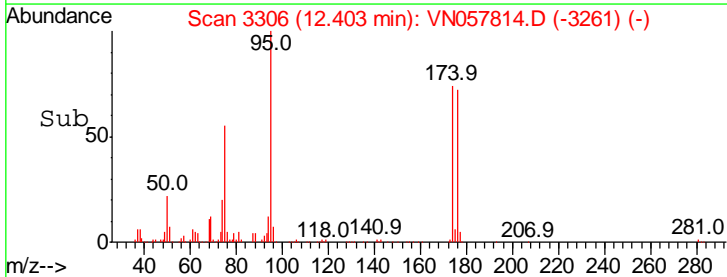
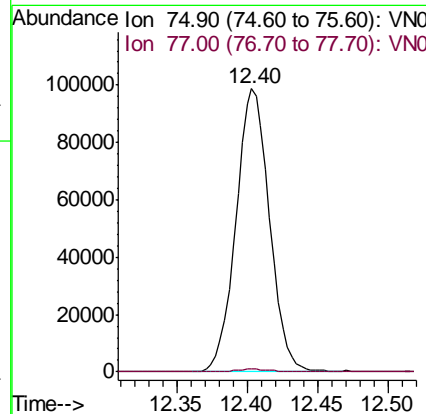
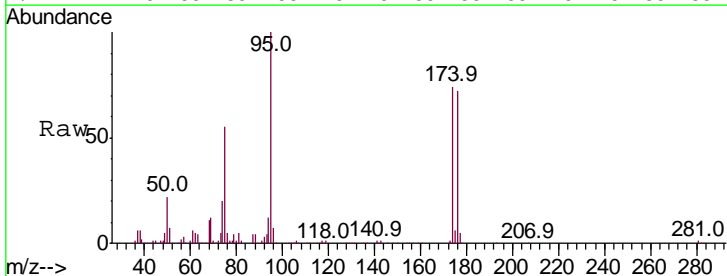
Instrument : MSVOA_N
 ClientSampled :

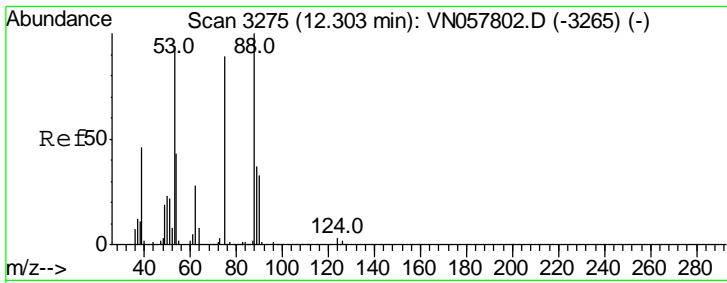
Tgt Ion	Resp	Lower	Upper
152	100		
115	61.3	30.3	91.0
150	155.7	0.0	352.4



#76
 1,2,3-Trichloropropane
 Concen: 30.975 ug/l
 RT: 12.40 min Scan# 3306
 Delta R.T. -0.15 min
 Lab File: VN057814.D
 Acq: 9 Sep 2019 20:35

Tgt Ion	Resp	Lower	Upper
75	100		
77	1.1	0.0	0.0#

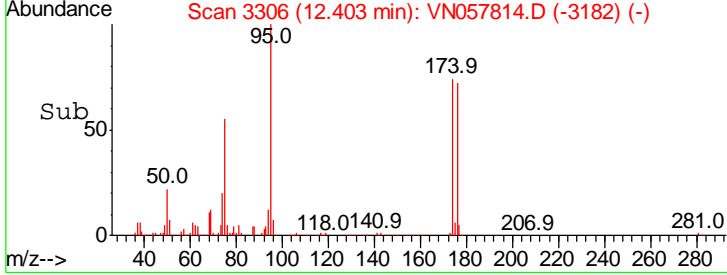
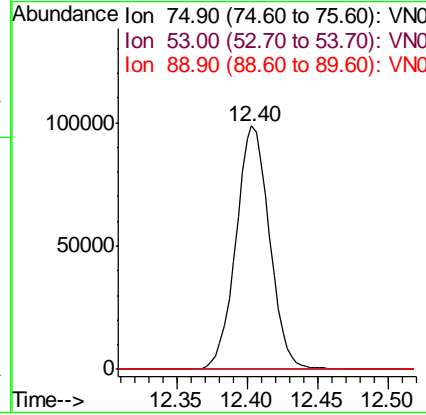
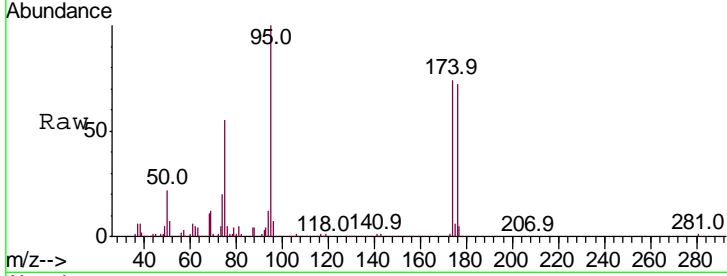




#81
 trans-1,4-Dichloro-2-butene
 Concen: 109.000 ug/l
 RT: 12.40 min Scan# 3306
 Delta R.T. 0.10 min
 Lab File: VN057814.D
 Acq: 9 Sep 2019 20:35

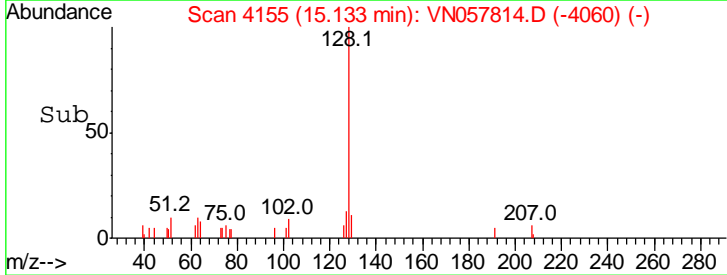
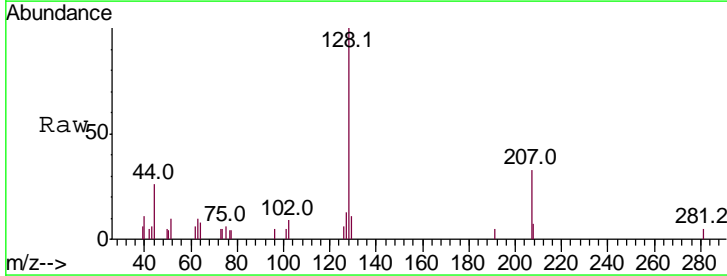
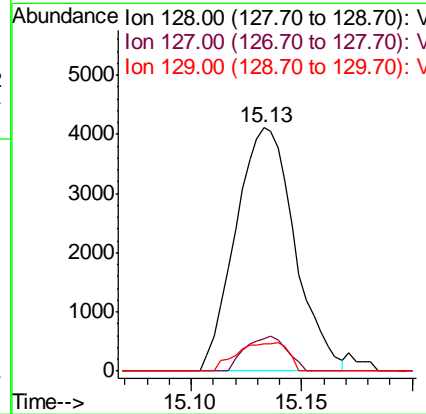
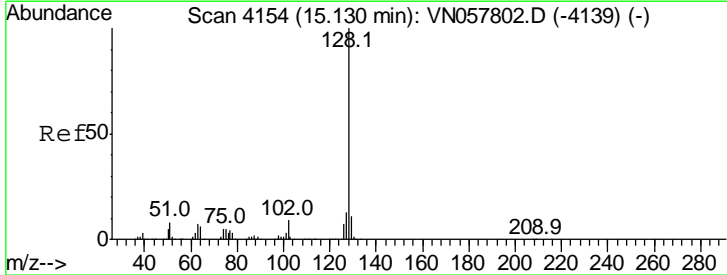
Instrument :
 MSVOA_N
 ClientSampled :

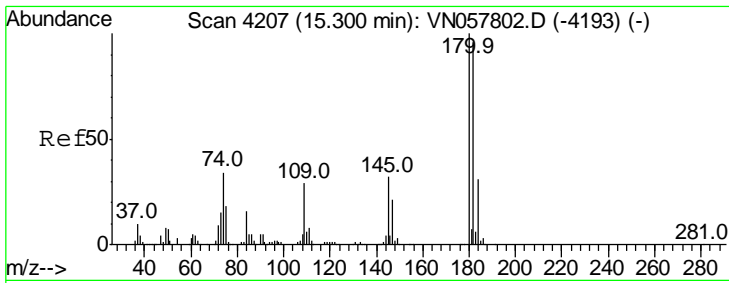
Tgt Ion	Resp	Lower	Upper
75	100		
53	0.0	88.4	132.6#
89	0.0	35.3	52.9#



#95
 Naphthalene
 Concen: Below Cal
 RT: 15.13 min Scan# 4155
 Delta R.T. 0.00 min
 Lab File: VN057814.D
 Acq: 9 Sep 2019 20:35

Tgt Ion	Resp	Lower	Upper
128	100		
127	10.1	10.3	15.5#
129	10.0	8.6	12.8





#96
 1,2,3-Trichlorobenzene
 Concen: 1.082 ug/l
 RT: 15.30 min Scan# 4207
 Delta R.T. 0.00 min
 Lab File: VN057814.D
 Acq: 9 Sep 2019 20:35

Instrument :
 MSVOA_N
 ClientSampled :

Tot Ion:180 Resp: 404

Ion	Ratio	Lower	Upper
180	100		
182	95.3	48.3	144.8
145	0.0	16.3	48.8#

