

Data Path : Z:\VOASRV\HPCHEM1\MSVOA N\DATA\VN091019\
 Data File : VN057837.D
 Acq On : 10 Sep 2019 5:46
 Operator : JC/SP
 Sample : K4622-22
 Misc : 5.00mL/MSVOA N/WATER
 ALS Vial : 43 Sample Multiplier: 1

Instrument :
 MSVOA_N
 ClientSampleId :

Quant Time: Sep 10 07:16:10 2019
 Quant Method : Z:\VOASRV\HPCHEM1\MSVOA_N\METHODS\82N091019W.M
 Quant Title : SW846 8260
 QLast Update : Tue Sep 10 03:02:13 2019
 Response via : Initial Calibration

Internal Standards	R.T.	QIon	Response	Conc	Units	Dev(Min)
1) Pentafluorobenzene	7.65	168	287767	50.00	ug/l	0.00
34) 1,4-Difluorobenzene	8.58	114	498132	50.00	ug/l	0.00
63) Chlorobenzene-d5	11.41	117	452330	50.00	ug/l	0.00
72) 1,4-Dichlorobenzene-d4	13.35	152	230066	50.00	ug/l	0.00

System Monitoring Compounds

33) 1,2-Dichloroethane-d4	8.01	65	337541	57.91	ug/l	0.00
Spiked Amount	50.000		Recovery	=	115.82%	
35) Dibromofluoromethane	7.58	113	222562	48.41	ug/l	0.00
Spiked Amount	50.000		Recovery	=	96.82%	
50) Toluene-d8	10.08	98	895784	50.18	ug/l	0.00
Spiked Amount	50.000		Recovery	=	100.36%	
62) 4-Bromofluorobenzene	12.40	95	287853	42.32	ug/l	0.00
Spiked Amount	50.000		Recovery	=	84.64%	

Target Compounds

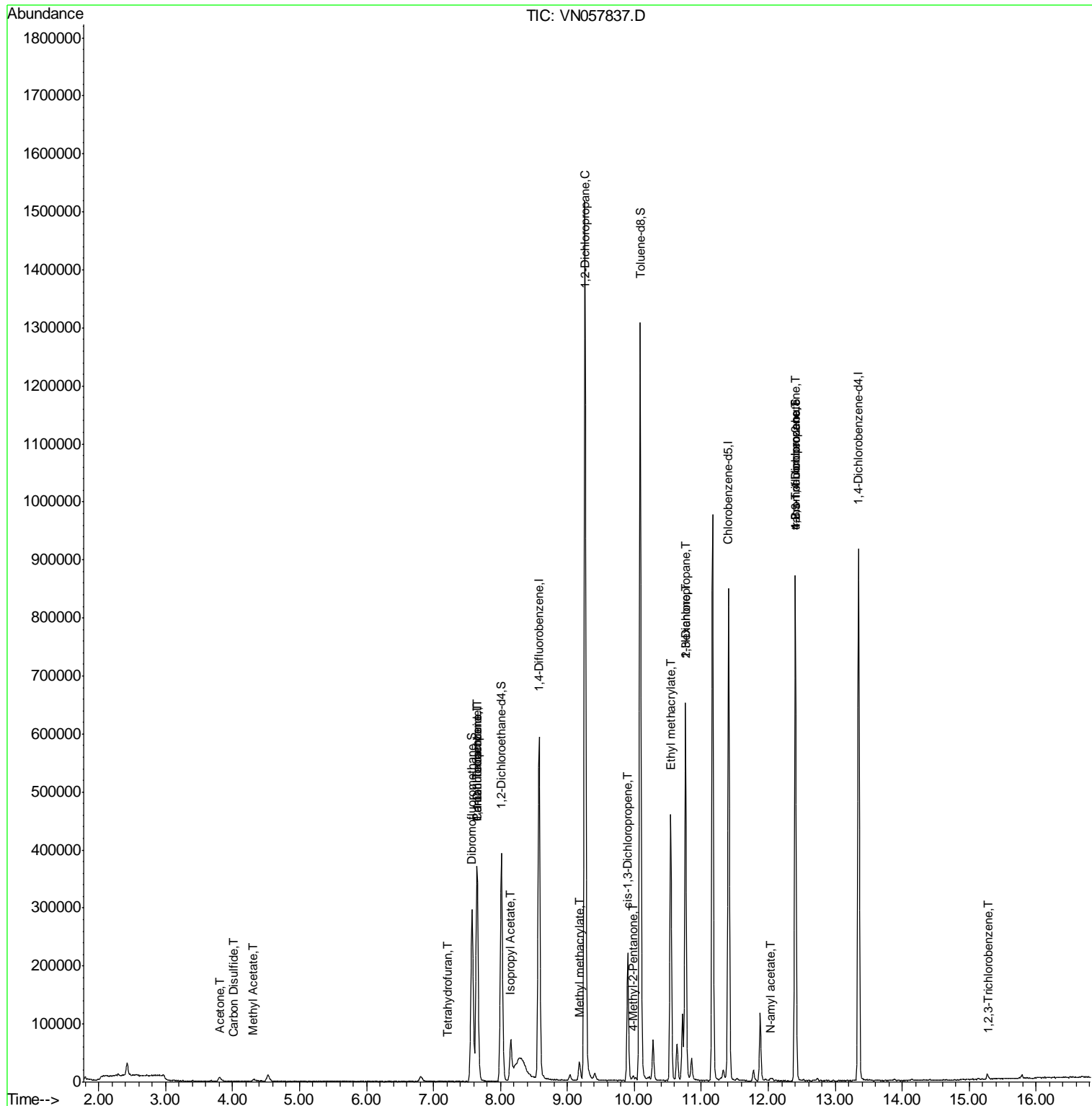
					Qvalue	
5) Bromomethane	2.55	94	515	Below Cal	#	60
16) Acetone	3.80	43	12288	6.431	ug/l	97
17) Carbon Disulfide	4.03	76	338	0.229	ug/l #	75
18) Methyl Acetate	4.31	43	4598	0.903	ug/l	91
29) Tetrahydrofuran	7.20	42	375	0.220	ug/l #	34
31) Cyclohexane	7.64	56	7947	Below Cal	#	22
36) 1,1-Dichloropropene	7.65	75	25681	4.445	ug/l #	50
38) Carbon Tetrachloride	7.65	117	31099	5.896	ug/l #	15
43) Isopropyl Acetate	8.16	43	94509	9.416	ug/l #	89
45) 1,2-Dichloropropane	9.26	63	1736	0.343	ug/l #	44
48) Methyl methacrylate	9.18	41	5534	1.087	ug/l #	13
51) 4-Methyl-2-Pentanone	9.98	43	6868	1.156	ug/l	89
54) cis-1,3-Dichloropropene	9.90	75	37318	5.256	ug/l #	68
56) Ethyl methacrylate	10.54	69	1645	0.235	ug/l #	1
57) 1,3-Dichloropropane	10.76	76	6038	0.755	ug/l #	43
59) 2-Hexanone	10.76	43	97558	21.913	ug/l #	53
74) N-amyl acetate	12.03	43	4236	0.545	ug/l #	47
76) 1,2,3-Trichloropropane	12.40	75	155479	29.874	ug/l #	100
81) trans-1,4-Dichloro-2-buten	12.40	75	155479	105.127	ug/l #	6
95) Naphthalene	15.14	128	1585	Below Cal	#	77
96) 1,2,3-Trichlorobenzene	15.30	180	319	1.065	ug/l #	69

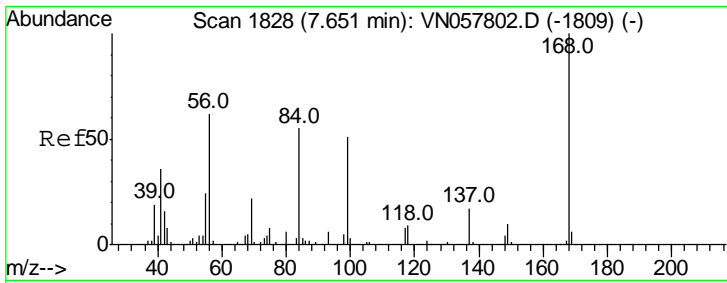
(#) = qualifier out of range (m) = manual integration (+) = signals summed

Data Path : Z:\VOASRV\HPCHEM1\MSVOA N\DATA\VN091019\
 Data File : VN057837.D
 Acq On : 10 Sep 2019 5:46
 Operator : JC/SP
 Sample : K4622-22
 Misc : 5.00mL/MSVOA N/WATER
 ALS Vial : 43 Sample Multiplier: 1

Instrument :
 MSVOA_N
 Client Sampled :

Quant Time: Sep 10 07:16:10 2019
 Quant Method : Z:\VOASRV\HPCHEM1\MSVOA_N\METHODS\82N091019W.M
 Quant Title : SW846 8260
 QLast Update : Tue Sep 10 03:02:13 2019
 Response via : Initial Calibration

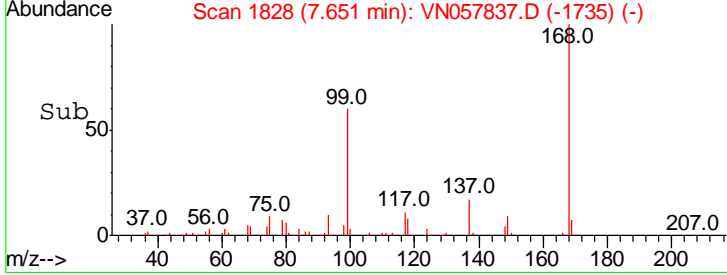
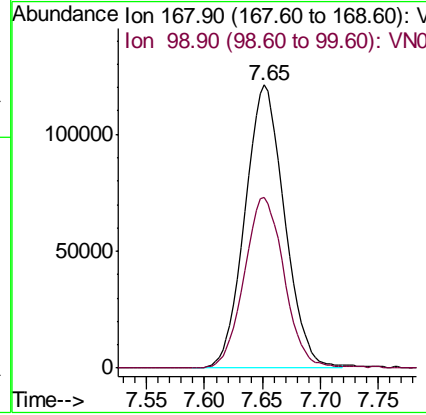
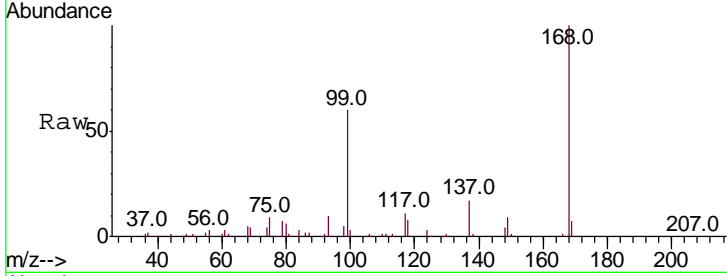




#1
 Pentafluorobenzene
 Concen: 50.000 ug/l
 RT: 7.65 min Scan# 1828
 Delta R.T. 0.00 min
 Lab File: VN057837.D
 Acq: 10 Sep 2019 5:46

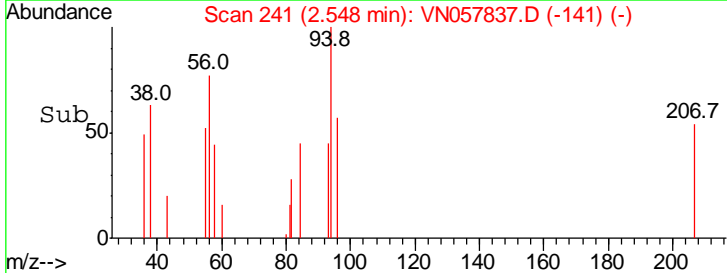
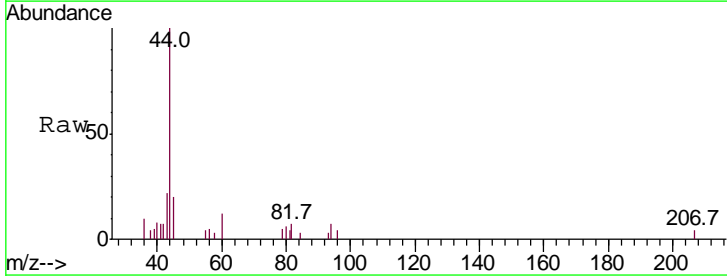
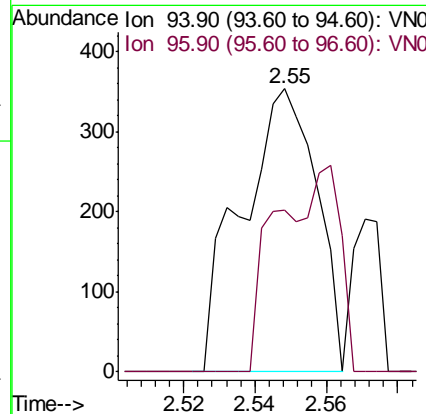
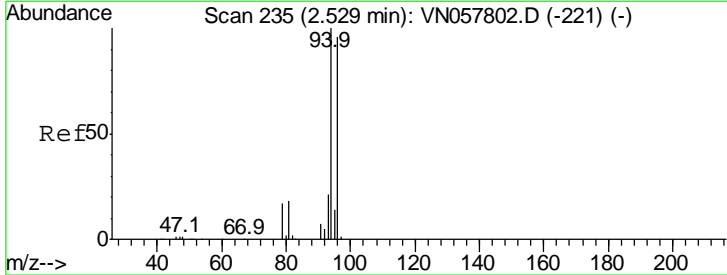
Instrument :
 MSVOA_N
 ClientSampled :

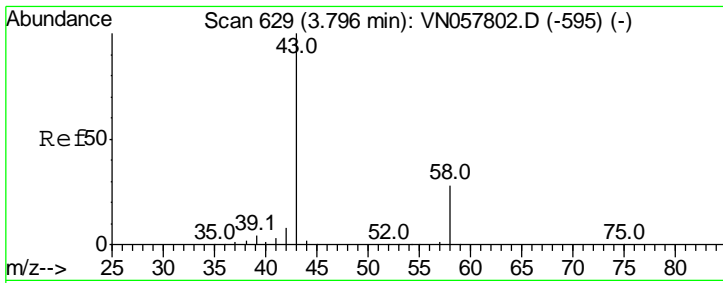
Tgt Ion: 168 Resp: 287767
 Ion Ratio Lower Upper
 168 100
 99 60.3 48.0 72.0



#5
 Bromomethane
 Concen: Below Cal
 RT: 2.55 min Scan# 241
 Delta R.T. 0.02 min
 Lab File: VN057837.D
 Acq: 10 Sep 2019 5:46

Tgt Ion: 94 Resp: 515
 Ion Ratio Lower Upper
 94 100
 96 57.2 77.0 115.4#

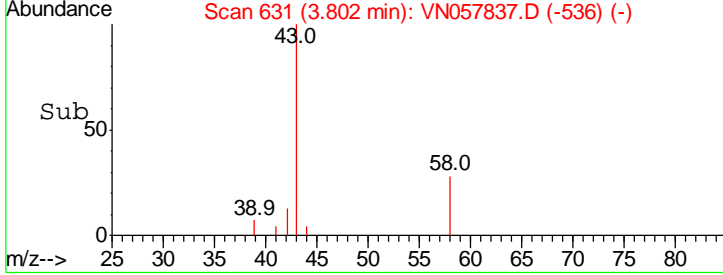
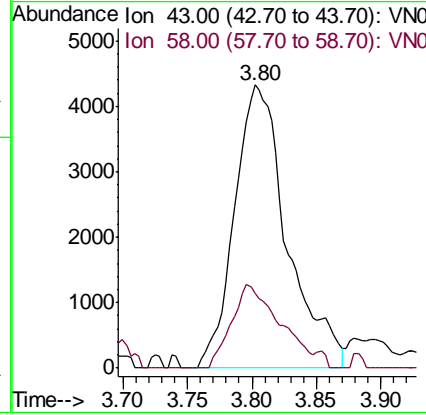
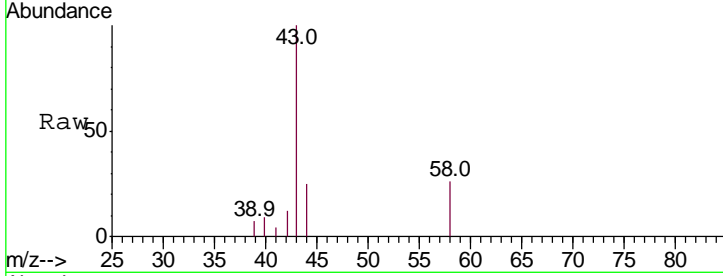




#16
 Acetone
 Concen: 6.431 ug/l
 RT: 3.80 min Scan# 631
 Delta R.T. 0.01 min
 Lab File: VN057837.D
 Acq: 10 Sep 2019 5:46

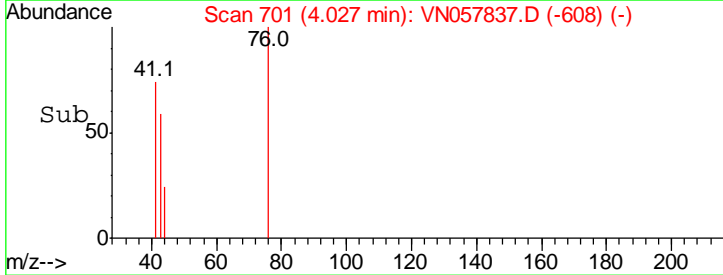
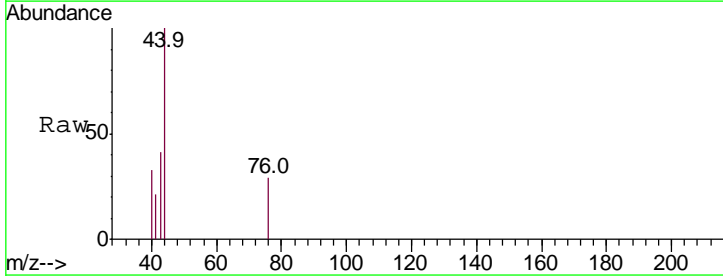
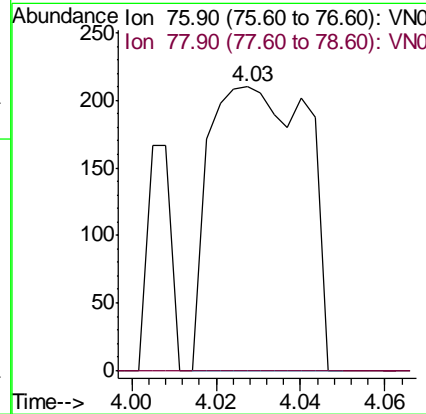
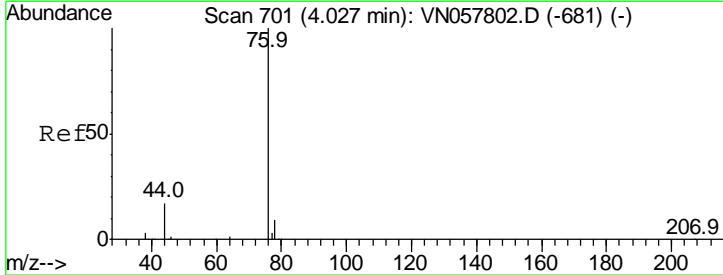
Instrument :
 MSVOA_N
 ClientSampled :

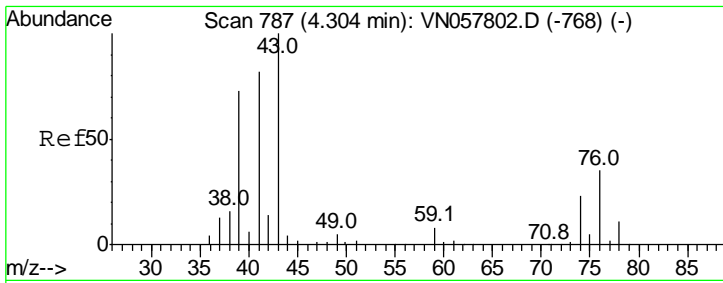
Tgt Ion	Resp	Lower	Upper
43	100		
58	26.3	22.2	33.2



#17
 Carbon Disulfide
 Concen: 0.229 ug/l
 RT: 4.03 min Scan# 701
 Delta R.T. 0.00 min
 Lab File: VN057837.D
 Acq: 10 Sep 2019 5:46

Tgt Ion	Resp	Lower	Upper
76	100		
78	0.0	7.1	10.7#

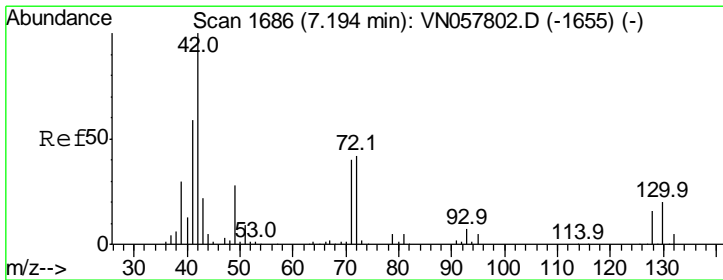
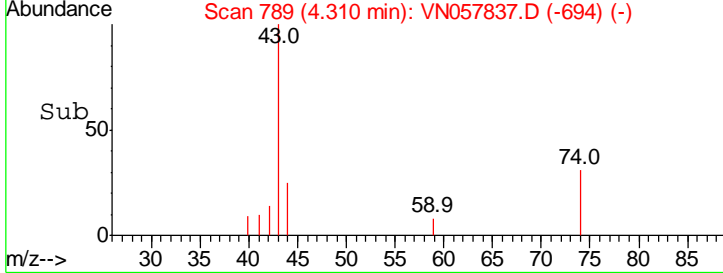
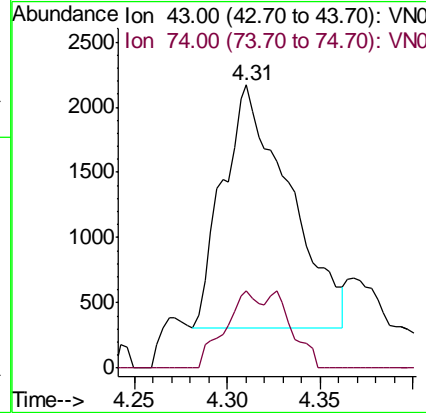
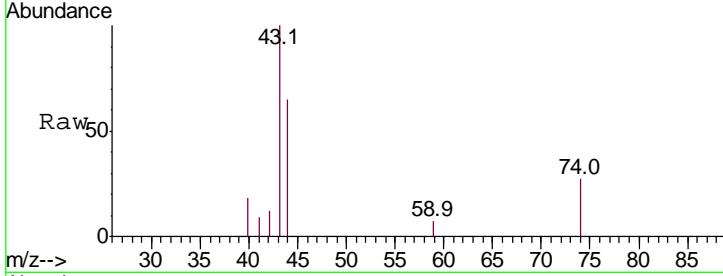




#18
 Methyl Acetate
 Concen: 0.903 ug/l
 RT: 4.31 min Scan# 789
 Delta R.T. 0.01 min
 Lab File: VN057837.D
 Acq: 10 Sep 2019 5:46

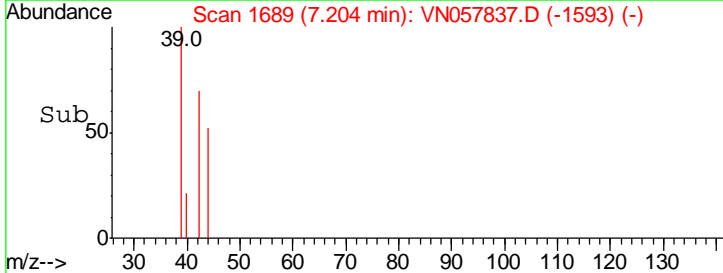
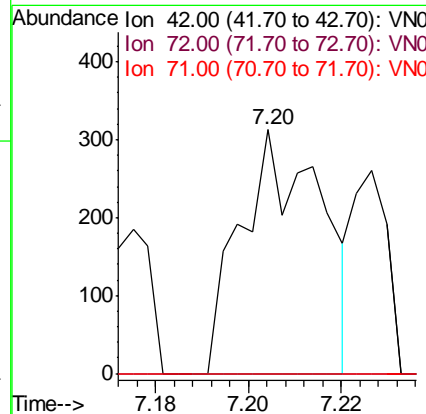
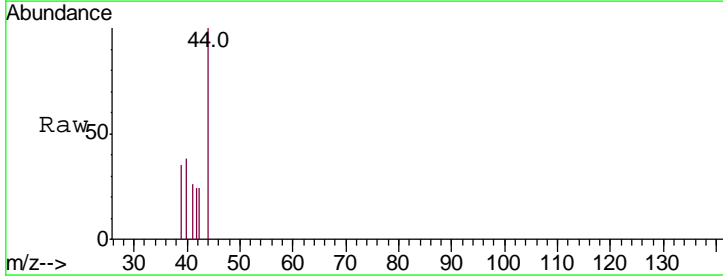
Instrument :
 MSVOA_N
 ClientSampled :

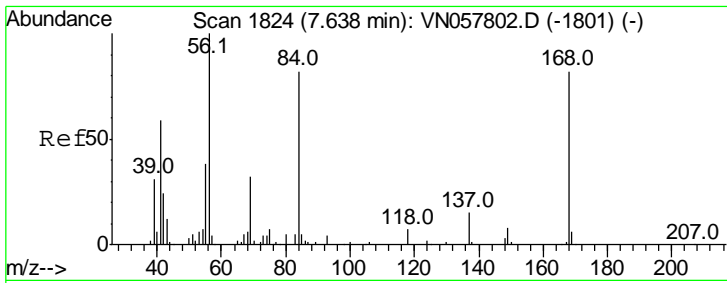
Tgt Ion	Resp	Lower	Upper
43	100		
74	18.1	17.9	26.9



#29
 Tetrahydrofuran
 Concen: 0.220 ug/l
 RT: 7.20 min Scan# 1689
 Delta R.T. 0.01 min
 Lab File: VN057837.D
 Acq: 10 Sep 2019 5:46

Tgt Ion	Resp	Lower	Upper
42	100		
72	0.0	33.7	50.5#
71	0.0	31.9	47.9#

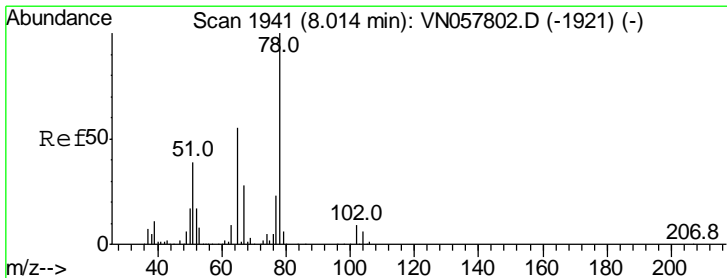
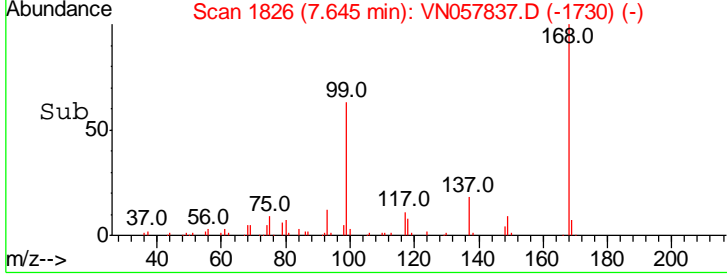
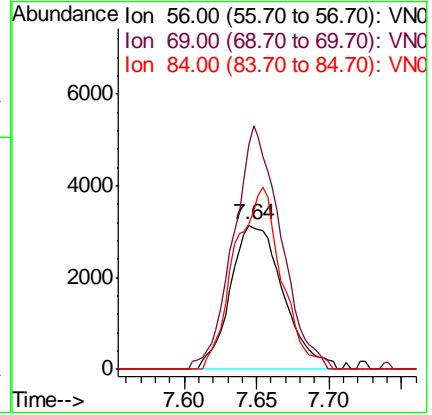
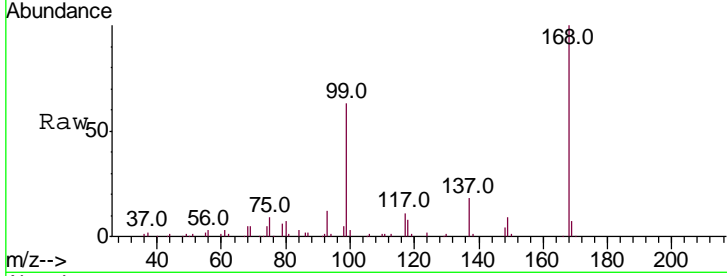




#31
 Cyclohexane
 Concen: Below Cal
 RT: 7.64 min Scan# 1826
 Delta R.T. 0.01 min
 Lab File: VN057837.D
 Acq: 10 Sep 2019 5:46

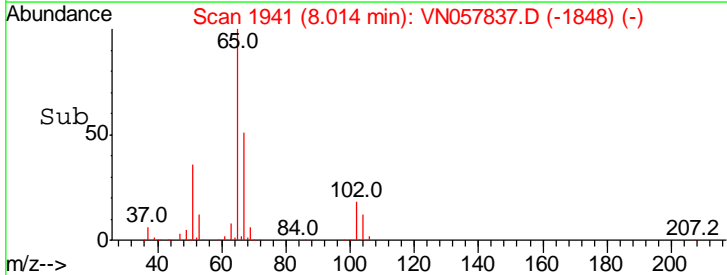
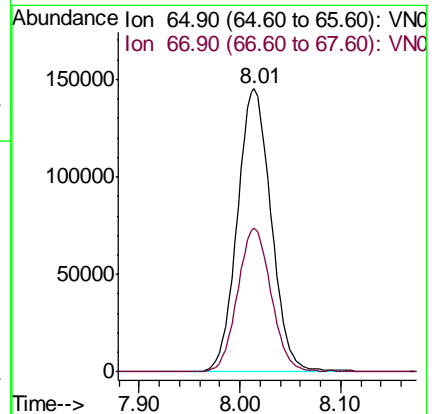
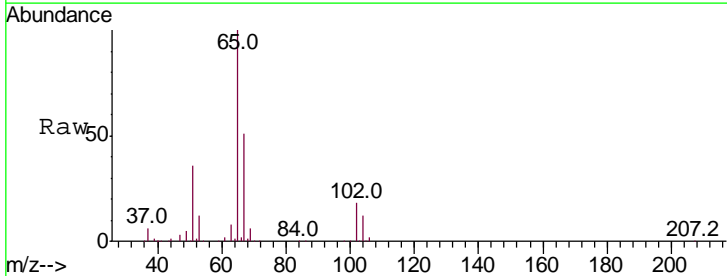
Instrument :
 MSVOA_N
 ClientSampled :

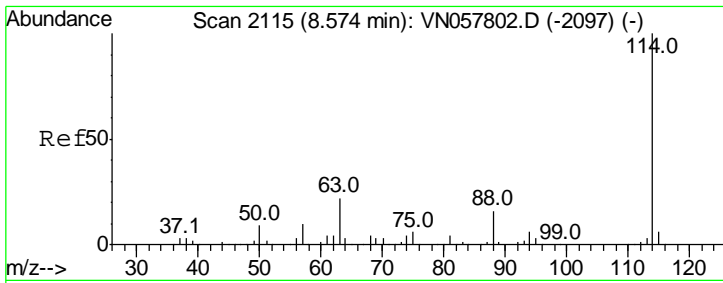
Tgt Ion	Resp	Lower	Upper
56	100		
69	156.3	25.9	38.9#
84	100.8	65.6	98.4#



#33
 1,2-Dichloroethane-d4
 Concen: 57.912 ug/l
 RT: 8.01 min Scan# 1941
 Delta R.T. 0.00 min
 Lab File: VN057837.D
 Acq: 10 Sep 2019 5:46

Tgt Ion	Resp	Lower	Upper
65	100		
67	50.6	0.0	104.0

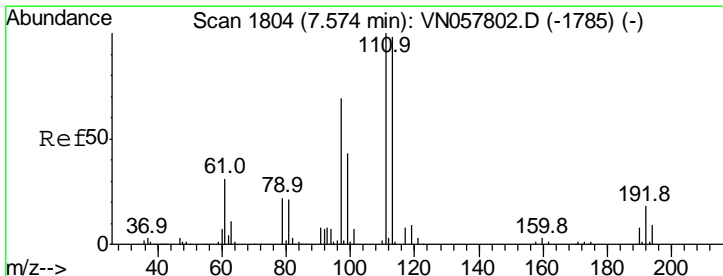
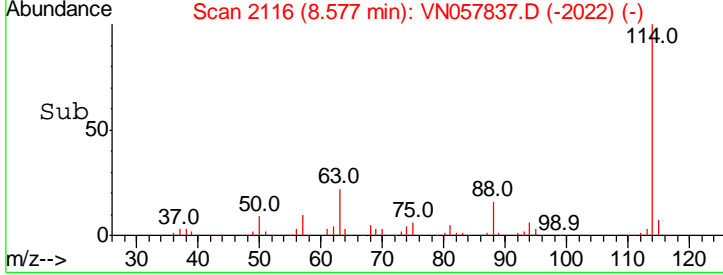
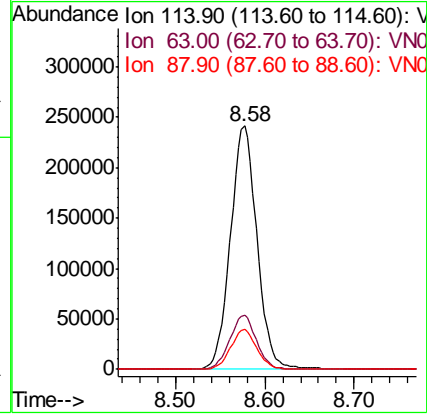
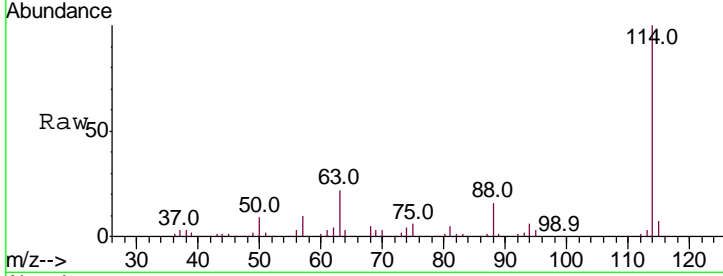




#34
 1,4-Difluorobenzene
 Concen: 50.000 ug/l
 RT: 8.58 min Scan# 2116
 Delta R.T. 0.00 min
 Lab File: VN057837.D
 Acq: 10 Sep 2019 5:46

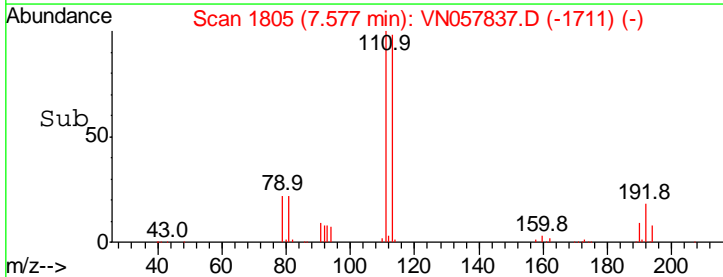
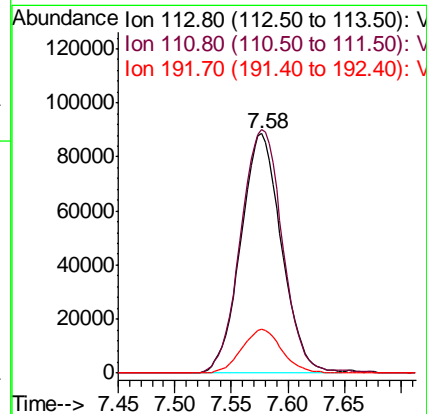
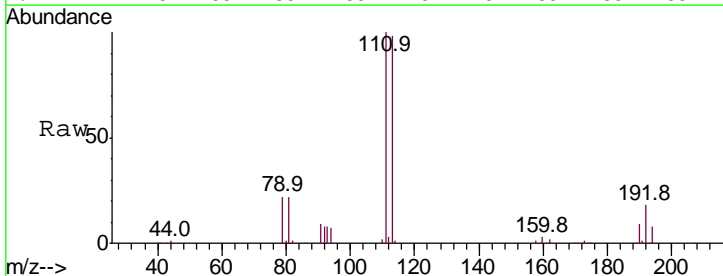
Instrument :
 MSVOA_N
 ClientSampled :

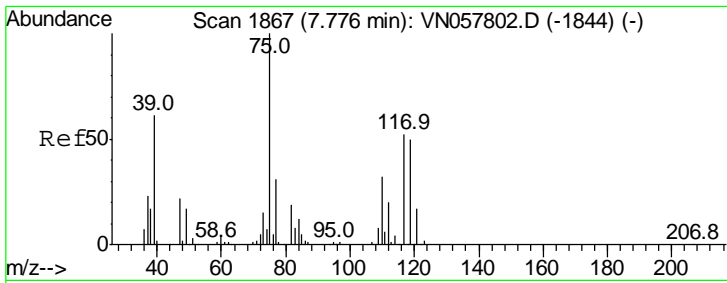
Tgt Ion	Resp	Lower	Upper
114	100		
63	22.1	0.0	44.0
88	16.2	0.0	31.4



#35
 Dibromofluoromethane
 Concen: 48.409 ug/l
 RT: 7.58 min Scan# 1805
 Delta R.T. 0.00 min
 Lab File: VN057837.D
 Acq: 10 Sep 2019 5:46

Tgt Ion	Resp	Lower	Upper
113	100		
111	104.2	81.3	121.9
192	17.9	14.6	22.0

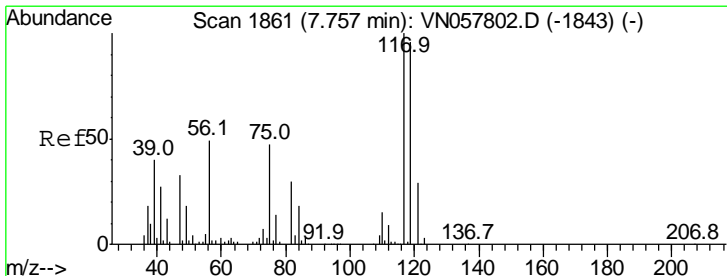
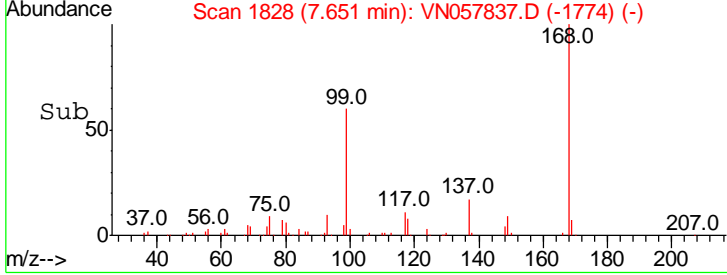
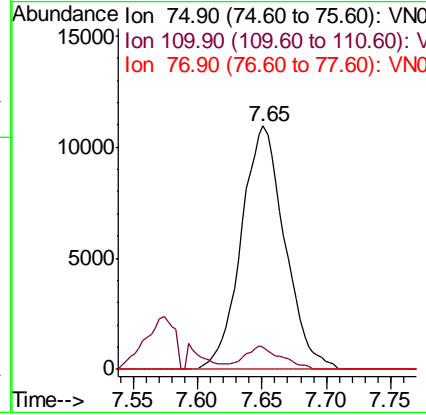
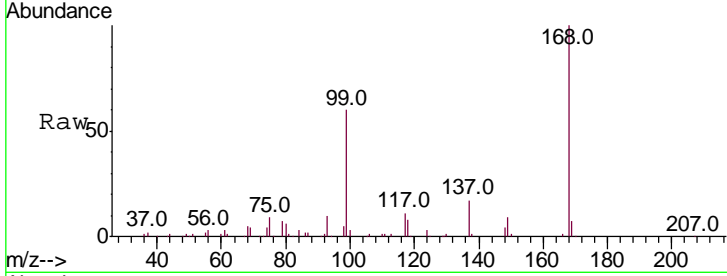




#36
 1,1-Dichloropropene
 Concen: 4.445 ug/l
 RT: 7.65 min Scan# 1828
 Delta R.T. -0.13 min
 Lab File: VN057837.D
 Acq: 10 Sep 2019 5:46

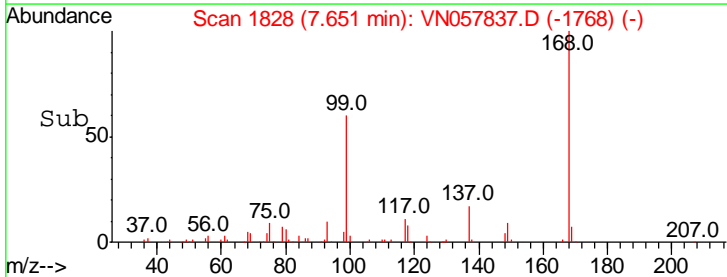
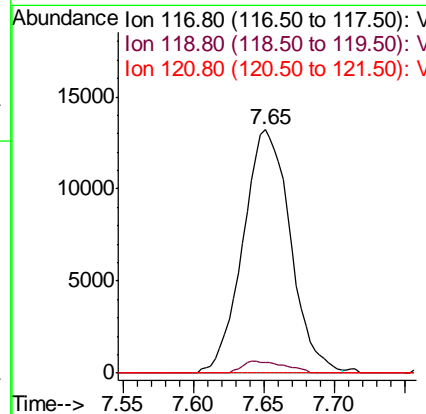
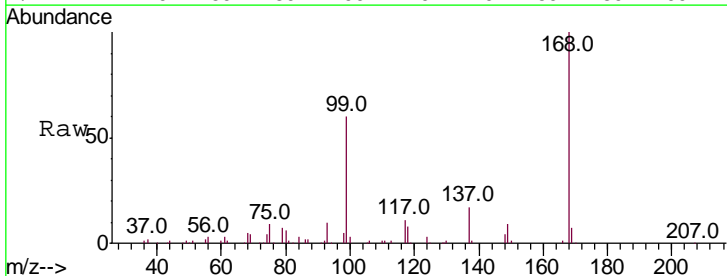
Instrument :
 MSVOA_N
 ClientSampled :

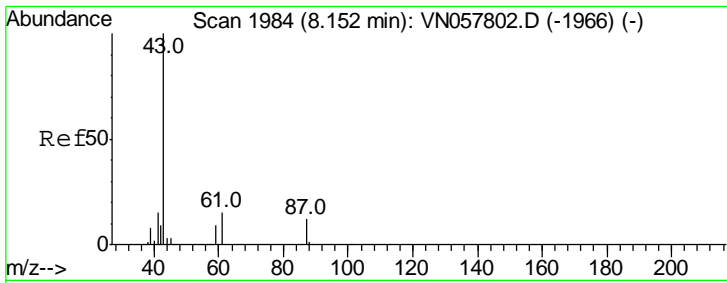
Tgt Ion	Resp	Lower	Upper
75	100		
110	8.2	16.3	48.9#
77	0.0	25.0	37.4#



#38
 Carbon Tetrachloride
 Concen: 5.896 ug/l
 RT: 7.65 min Scan# 1828
 Delta R.T. -0.11 min
 Lab File: VN057837.D
 Acq: 10 Sep 2019 5:46

Tgt Ion	Resp	Lower	Upper
117	100		
119	4.4	76.9	115.3#
121	0.0	23.4	35.2#

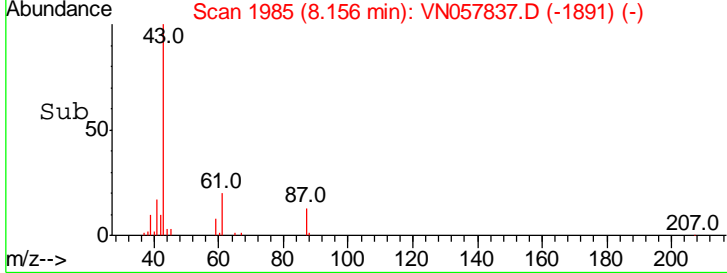
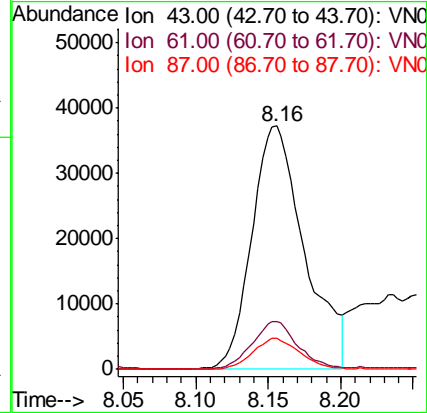
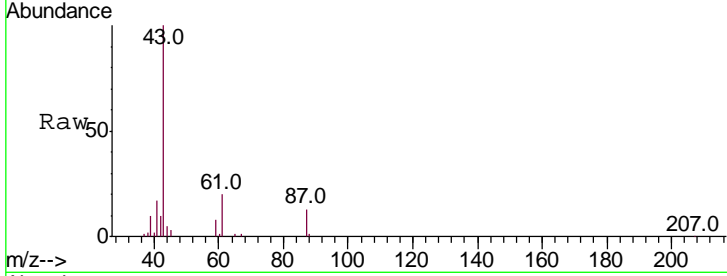




#43
 Isopropyl Acetate
 Concen: 9.416 ug/l
 RT: 8.16 min Scan# 1985
 Delta R.T. 0.00 min
 Lab File: VN057837.D
 Acq: 10 Sep 2019 5:46

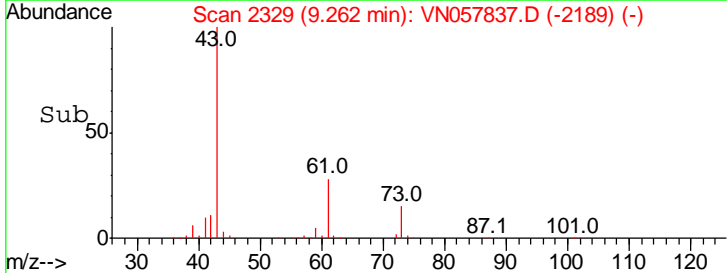
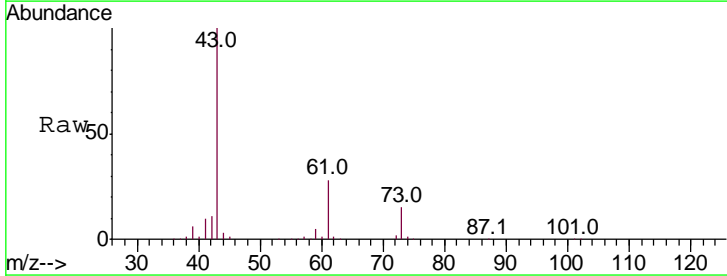
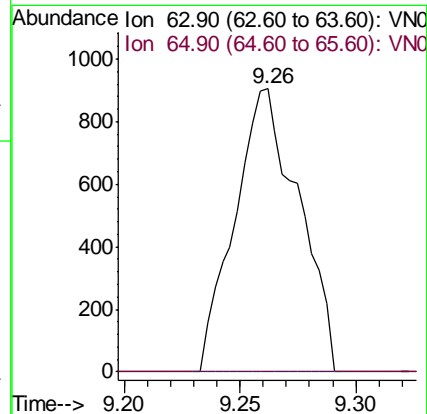
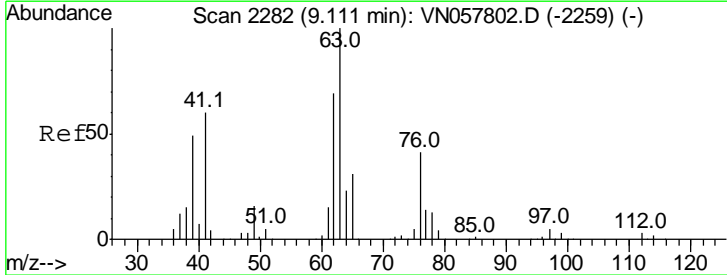
Instrument :
 MSVOA_N
 ClientSampled :

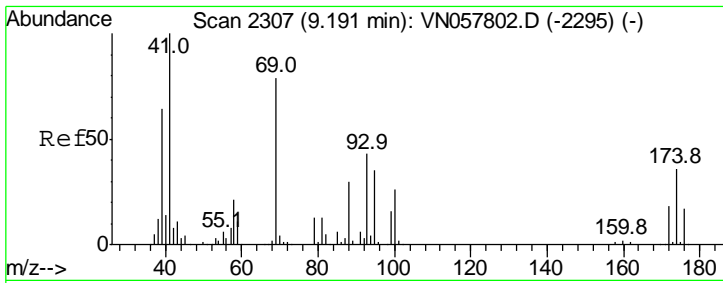
Tgt Ion	Resp	Lower	Upper
43	100		
61	17.0	20.1	30.1#
87	11.2	9.5	14.3



#45
 1,2-Dichloropropane
 Concen: 0.343 ug/l
 RT: 9.26 min Scan# 2329
 Delta R.T. 0.15 min
 Lab File: VN057837.D
 Acq: 10 Sep 2019 5:46

Tgt Ion	Resp	Lower	Upper
63	100		
65	0.0	24.8	37.2#

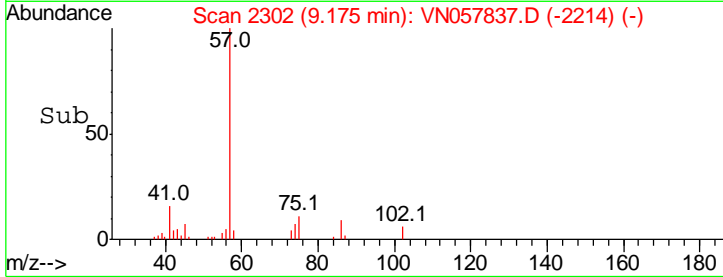
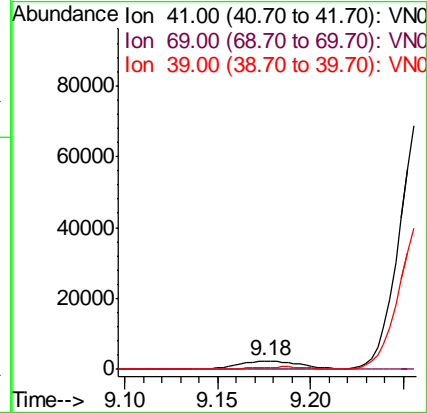
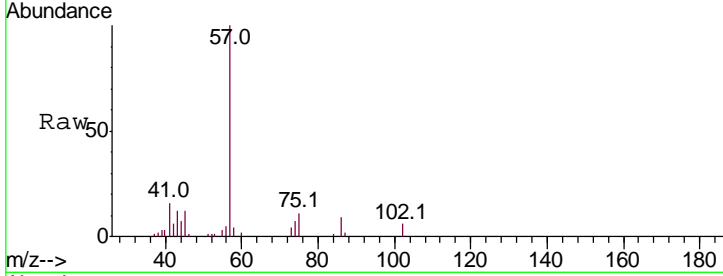




#48
 Methyl methacrylate
 Concen: 1.087 ug/l
 RT: 9.18 min Scan# 2302
 Delta R.T. -0.02 min
 Lab File: VN057837.D
 Acq: 10 Sep 2019 5:46

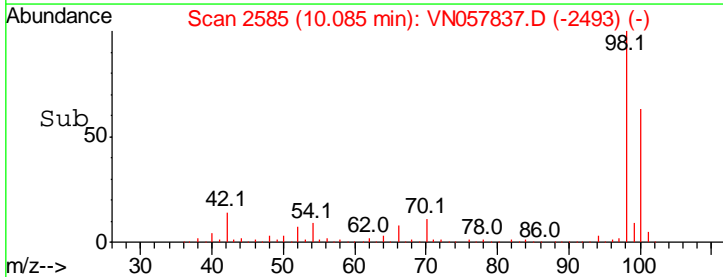
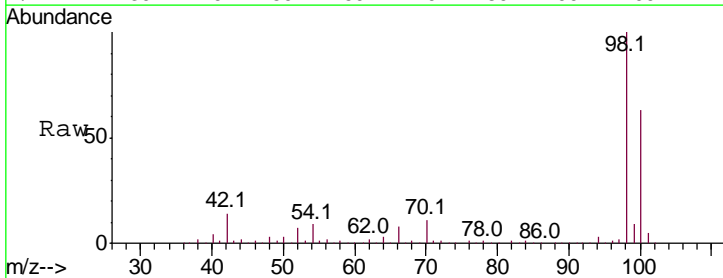
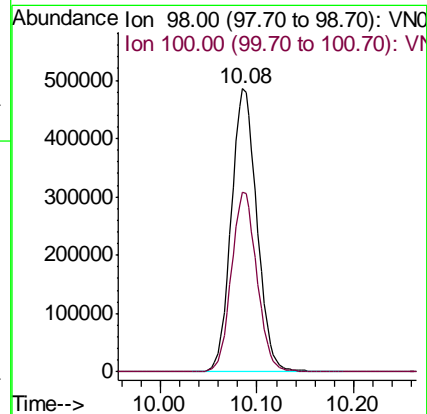
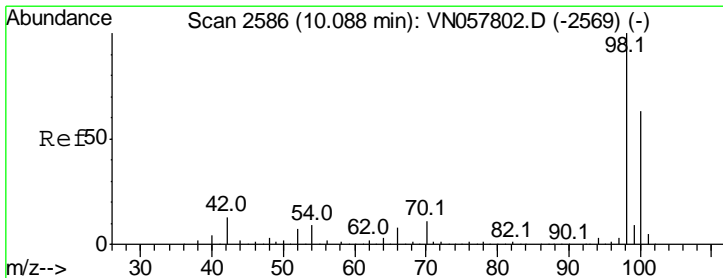
Instrument :
 MSVOA_N
 ClientSampled :

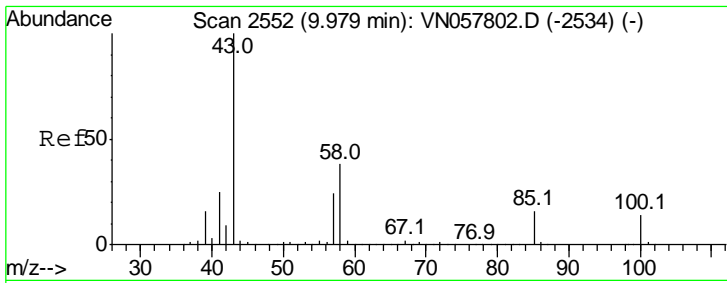
Tgt Ion	Resp	Lower	Upper
41	100		
69	0.0	62.7	94.1#
39	0.0	52.7	79.1#



#50
 Toluene-d8
 Concen: 50.183 ug/l
 RT: 10.08 min Scan# 2585
 Delta R.T. -0.00 min
 Lab File: VN057837.D
 Acq: 10 Sep 2019 5:46

Tgt Ion	Resp	Lower	Upper
98	100		
100	63.0	50.3	75.5

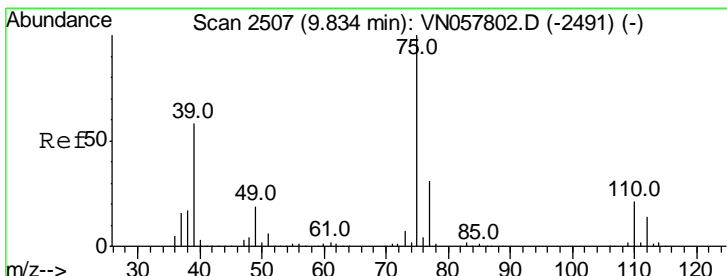
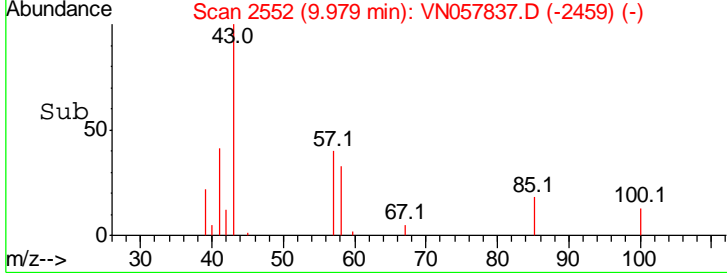
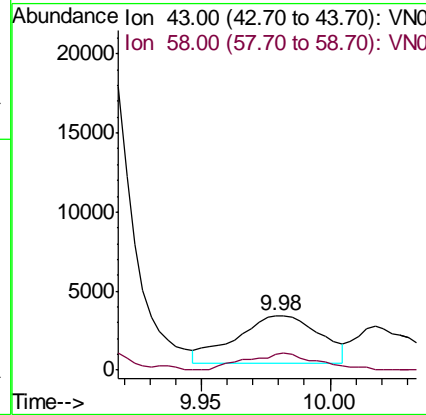
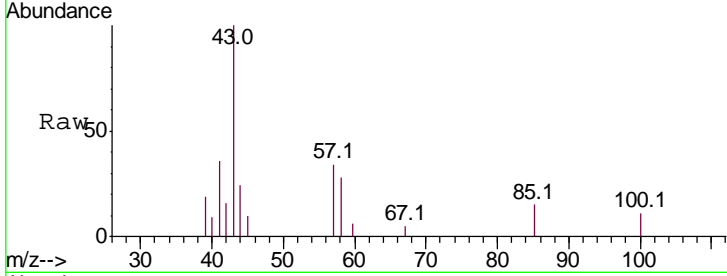




#51
 4-Methyl-2-Pentanone
 Concen: 1.156 ug/l
 RT: 9.98 min Scan# 2552
 Delta R.T. 0.00 min
 Lab File: VN057837.D
 Acq: 10 Sep 2019 5:46

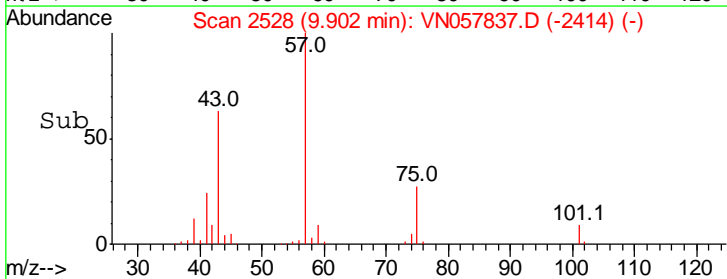
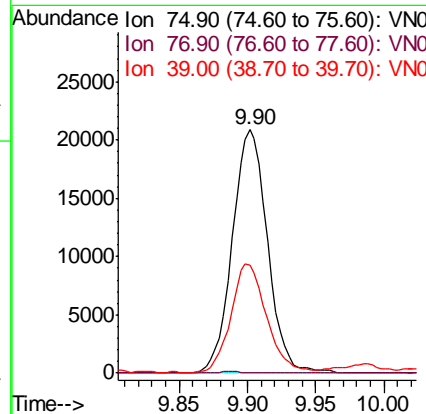
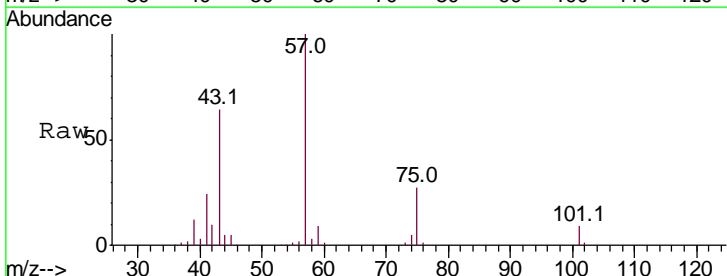
Instrument :
 MSVOA_N
 ClientSampled :

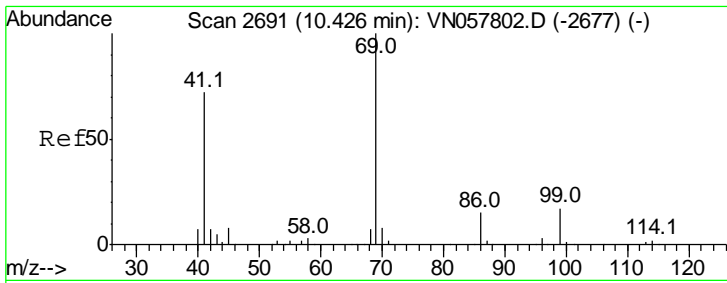
Tgt Ion	Resp	Lower	Upper
43	100		
58	30.4	29.8	44.6



#54
 cis-1,3-Dichloropropene
 Concen: 5.256 ug/l
 RT: 9.90 min Scan# 2528
 Delta R.T. 0.07 min
 Lab File: VN057837.D
 Acq: 10 Sep 2019 5:46

Tgt Ion	Resp	Lower	Upper
75	100		
77	0.0	24.8	37.2#
39	44.2	46.2	69.4#

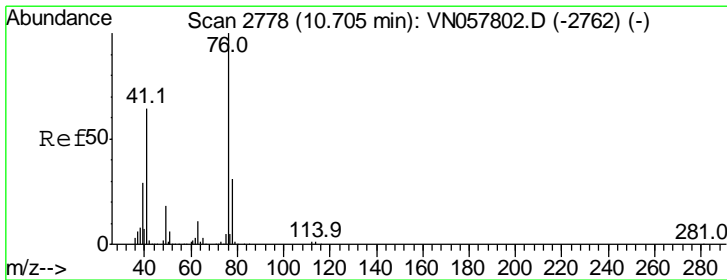
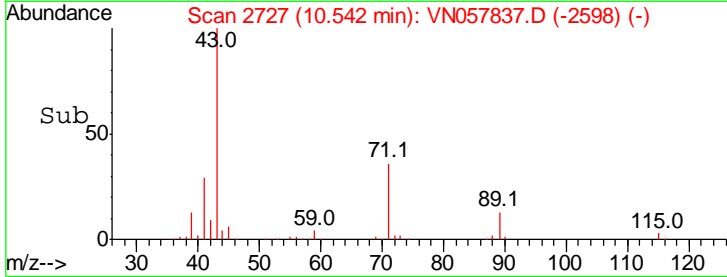
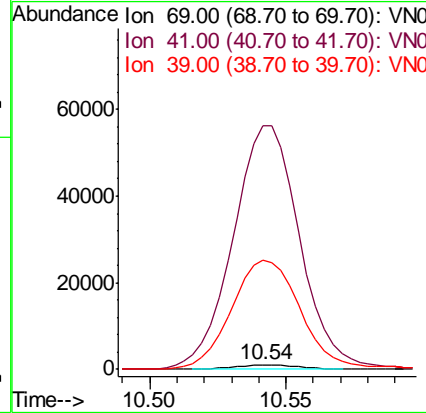
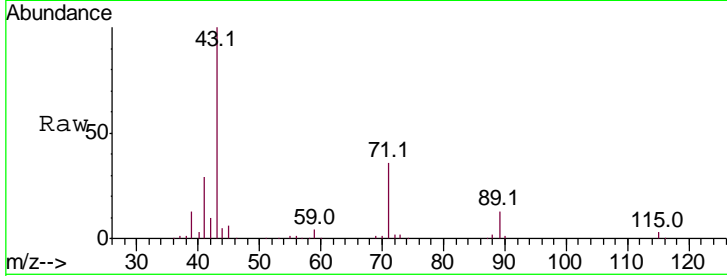




#56
 Ethyl methacrylate
 Concen: 0.235 ug/l
 RT: 10.54 min Scan# 2727
 Delta R.T. 0.12 min
 Lab File: VN057837.D
 Acq: 10 Sep 2019 5:46

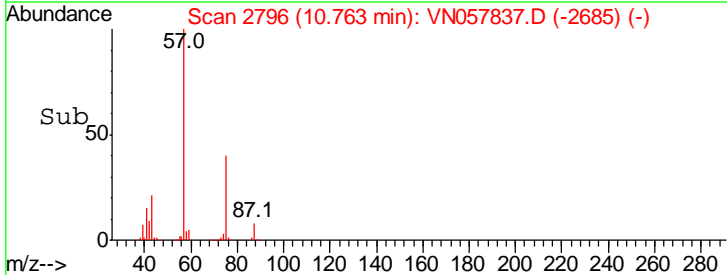
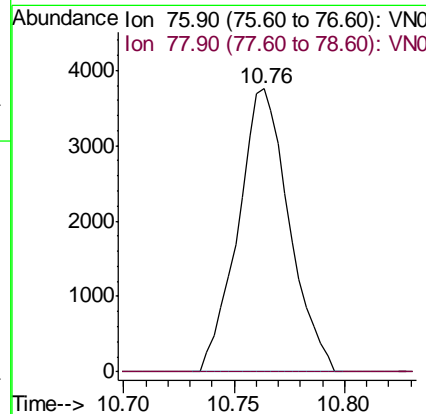
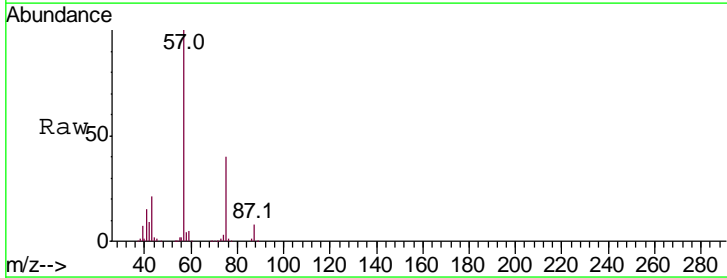
Instrument :
 MSVOA_N
 ClientSampled :

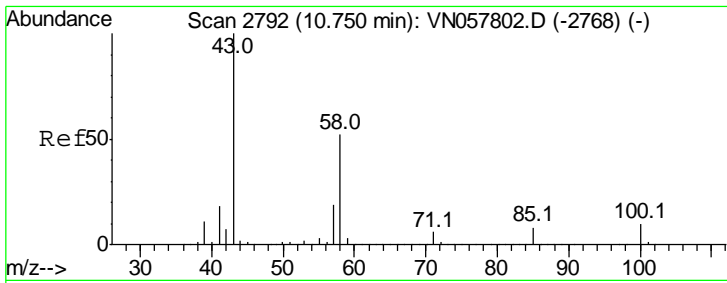
Tgt Ion	Resp	Lower	Upper
69	1645		
41	5835.3	56.7	85.1#
39	2718.7	36.3	54.5#



#57
 1,3-Dichloropropane
 Concen: 0.755 ug/l
 RT: 10.76 min Scan# 2796
 Delta R.T. 0.06 min
 Lab File: VN057837.D
 Acq: 10 Sep 2019 5:46

Tgt Ion	Resp	Lower	Upper
76	6038		
78	0.0	25.4	38.2#

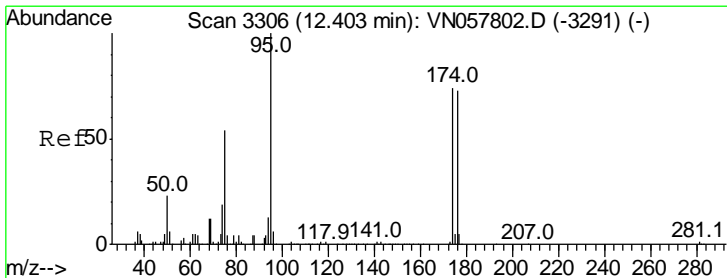
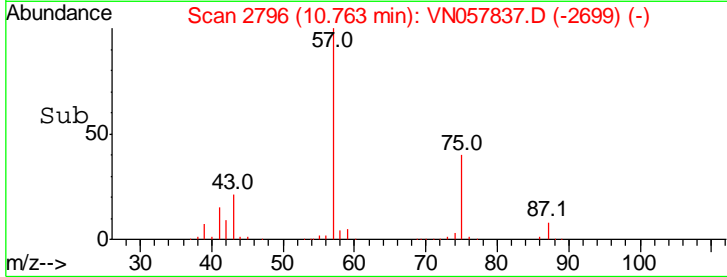
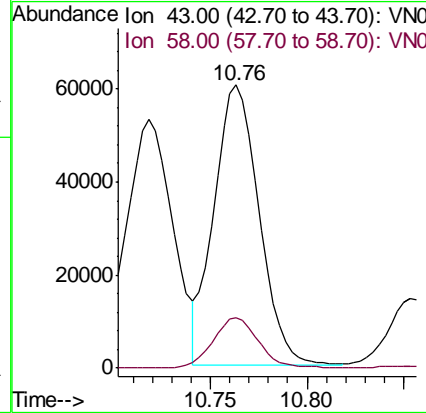
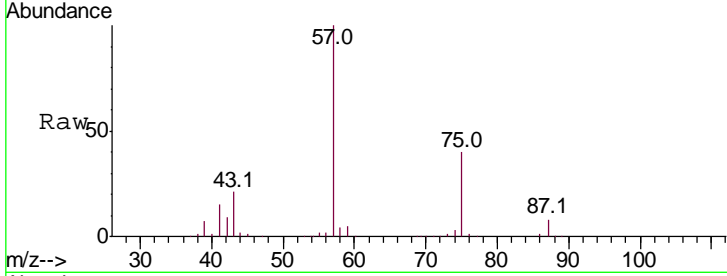




#59
 2-Hexanone
 Concen: 21.913 ug/l
 RT: 10.76 min Scan# 2796
 Delta R.T. 0.01 min
 Lab File: VN057837.D
 Acq: 10 Sep 2019 5:46

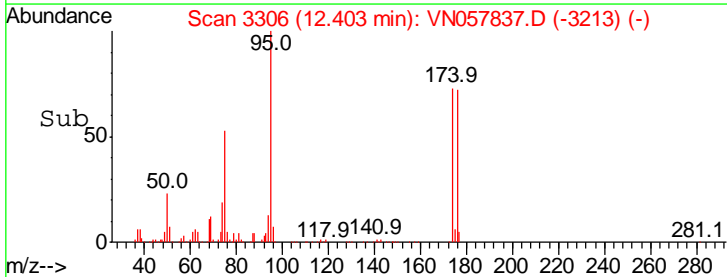
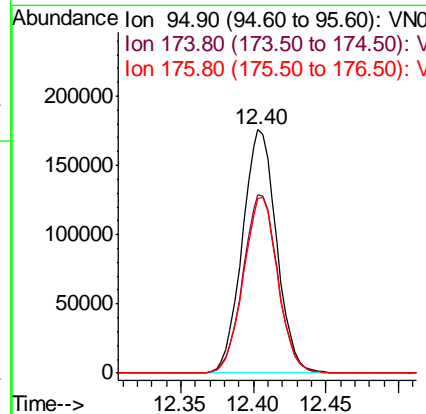
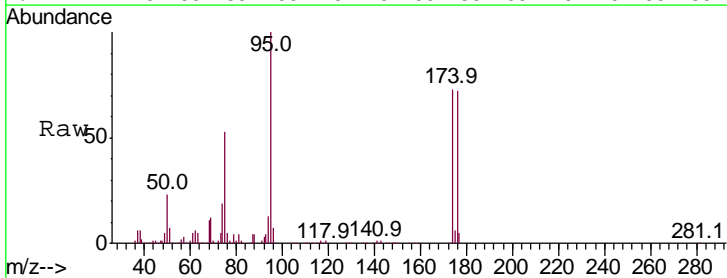
Instrument :
 MSVOA_N
 ClientSampled :

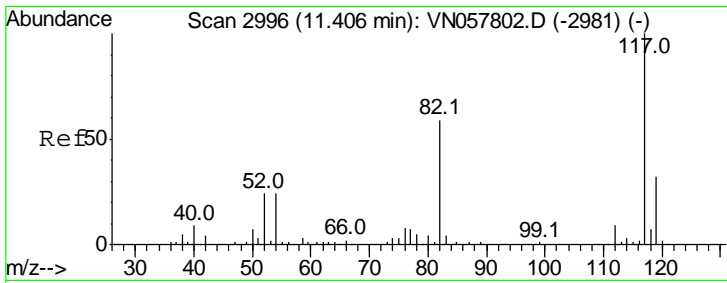
Tgt Ion	Resp	Lower	Upper
43	100		
58	18.2	25.6	76.8#



#62
 4-Bromofluorobenzene
 Concen: 42.316 ug/l
 RT: 12.40 min Scan# 3306
 Delta R.T. 0.00 min
 Lab File: VN057837.D
 Acq: 10 Sep 2019 5:46

Tgt Ion	Resp	Lower	Upper
95	100		
174	74.7	0.0	150.2
176	72.8	0.0	146.0



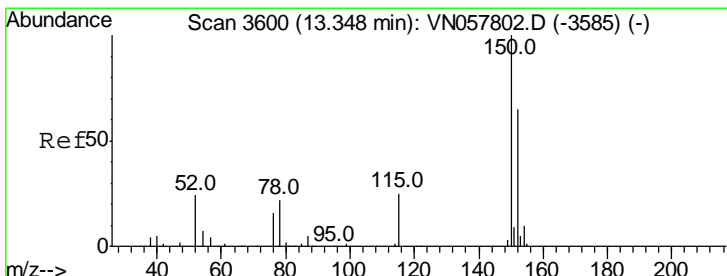
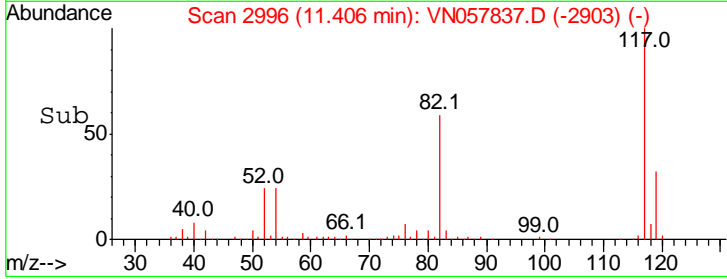
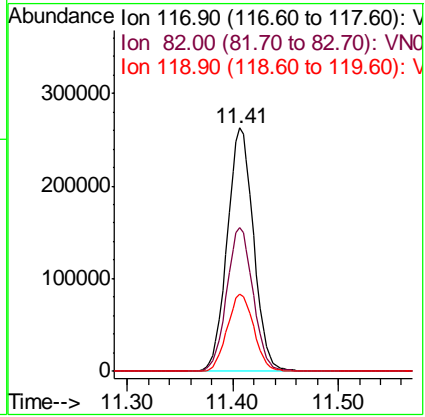
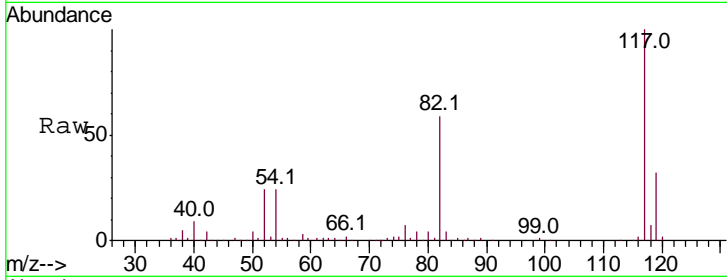


#63
 Chlorobenzene-d5
 Concen: 50.000 ug/l
 RT: 11.41 min Scan# 2996
 Delta R.T. 0.00 min
 Lab File: VN057837.D
 Acq: 10 Sep 2019 5:46

Instrument :
 MSVOA_N
 ClientSampled :

Tgt Ion:117 Resp: 452330

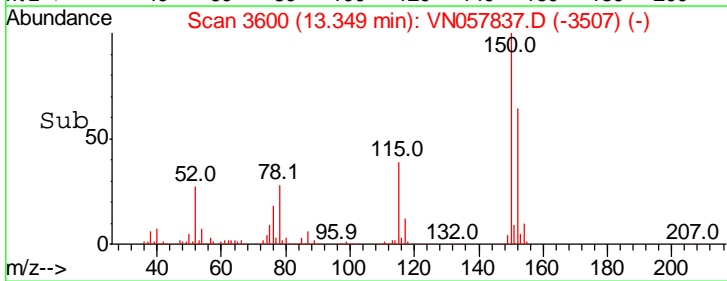
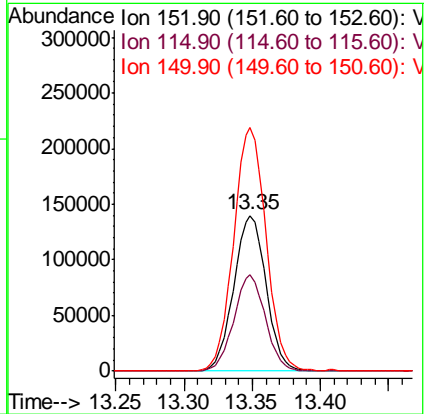
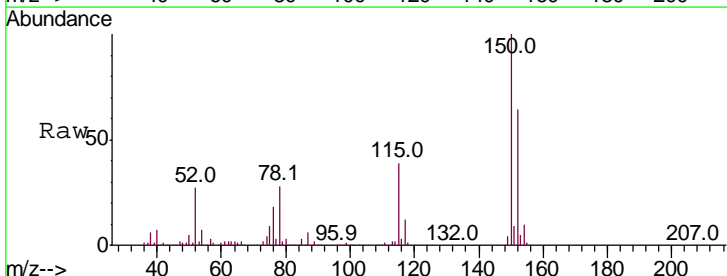
Ion	Ratio	Lower	Upper
117	100		
82	59.3	47.2	70.8
119	31.8	25.3	37.9

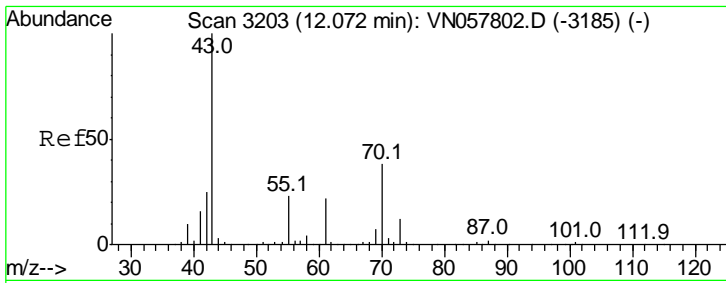


#72
 1,4-Dichlorobenzene-d4
 Concen: 50.000 ug/l
 RT: 13.35 min Scan# 3600
 Delta R.T. 0.00 min
 Lab File: VN057837.D
 Acq: 10 Sep 2019 5:46

Tgt Ion:152 Resp: 230066

Ion	Ratio	Lower	Upper
152	100		
115	60.4	30.3	91.0
150	156.9	0.0	352.4

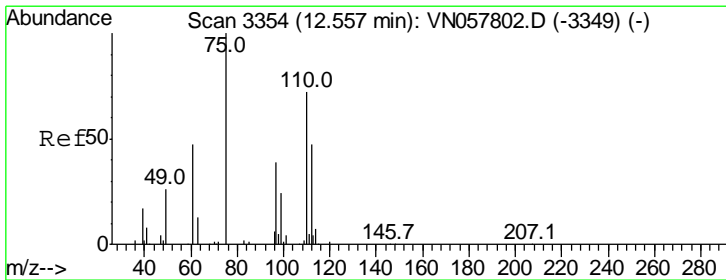
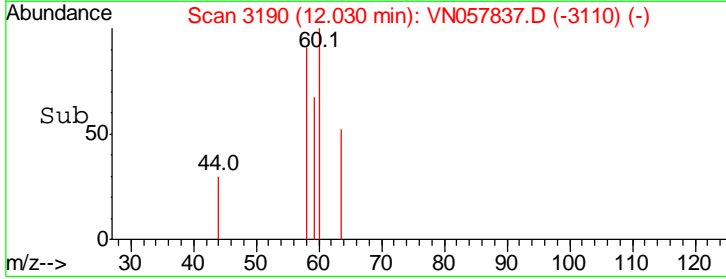
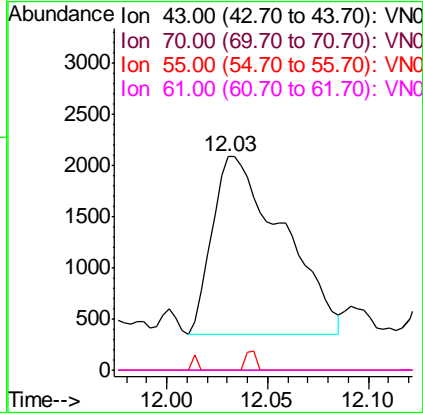
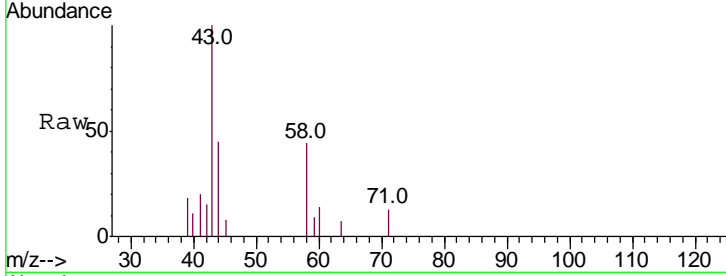




#74
 N-amyl acetate
 Concen: 0.545 ug/l
 RT: 12.03 min Scan# 3190
 Delta R.T. -0.04 min
 Lab File: VN057837.D
 Acq: 10 Sep 2019 5:46

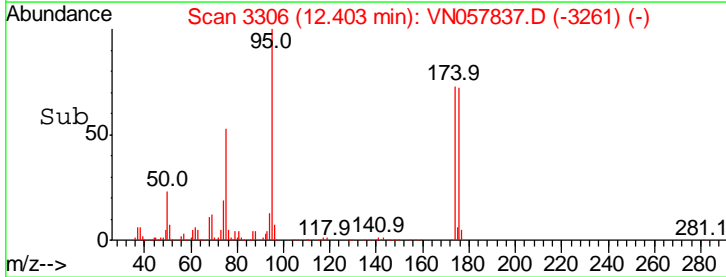
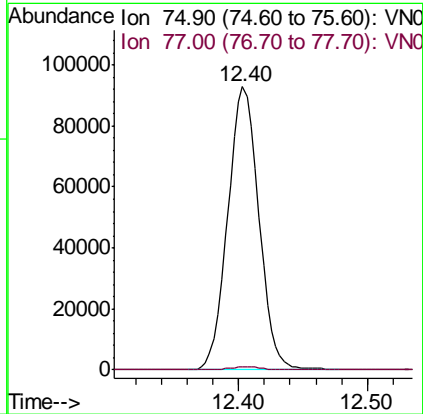
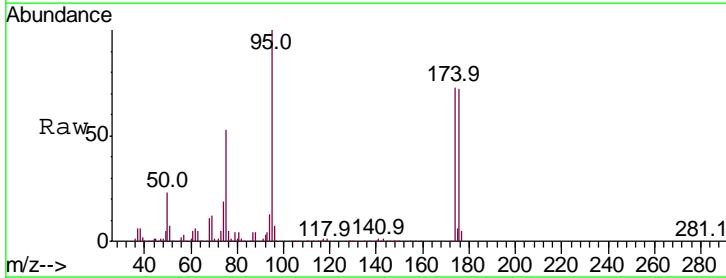
Instrument : MSVOA_N
 ClientSampled :

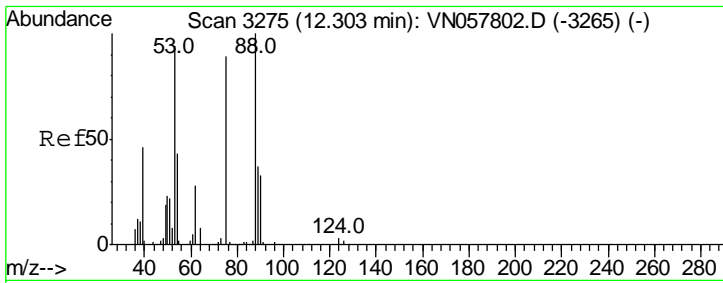
Tgt Ion	Resp	Lower	Upper
43	100		
70	0.0	30.6	45.8#
55	1.7	18.6	27.8#
61	0.0	17.4	26.2#



#76
 1,2,3-Trichloropropane
 Concen: 29.874 ug/l
 RT: 12.40 min Scan# 3306
 Delta R.T. -0.15 min
 Lab File: VN057837.D
 Acq: 10 Sep 2019 5:46

Tgt Ion	Resp	Lower	Upper
75	100		
77	1.0	0.0	0.0#

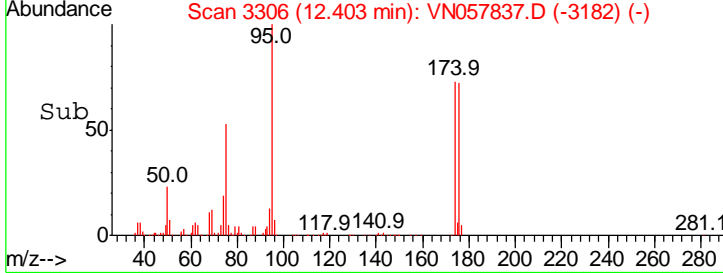
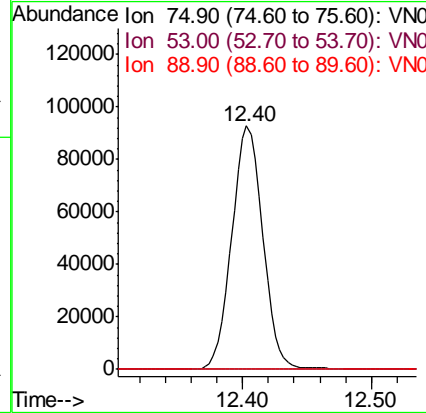
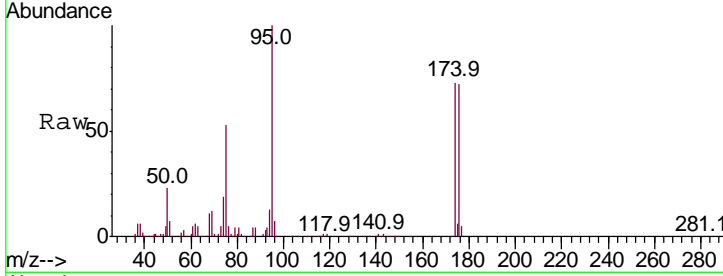




#81
 trans-1,4-Dichloro-2-butene
 Concen: 105.127 ug/l
 RT: 12.40 min Scan# 3306
 Delta R.T. 0.10 min
 Lab File: VN057837.D
 Acq: 10 Sep 2019 5:46

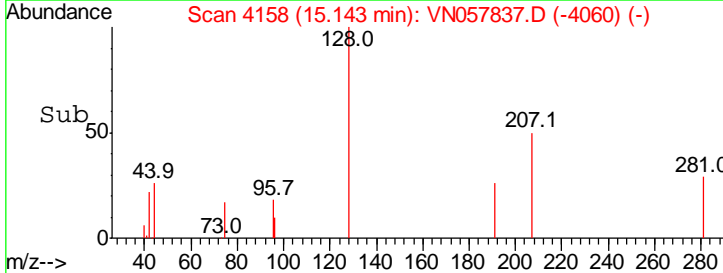
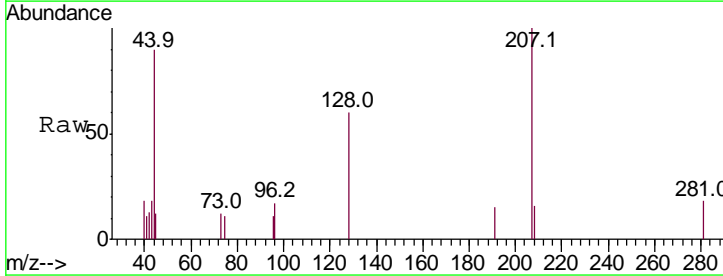
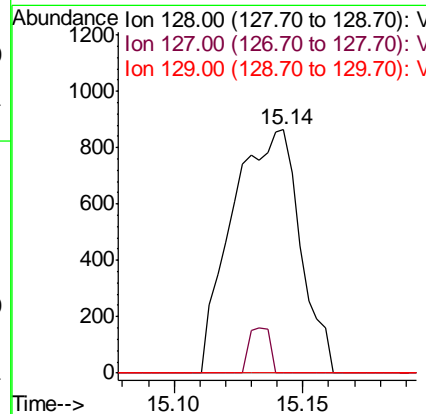
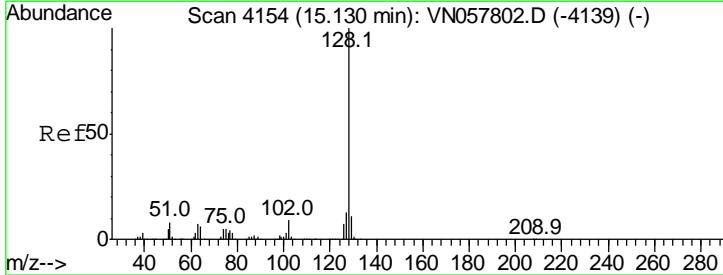
Instrument : MSVOA_N
 ClientSampled :

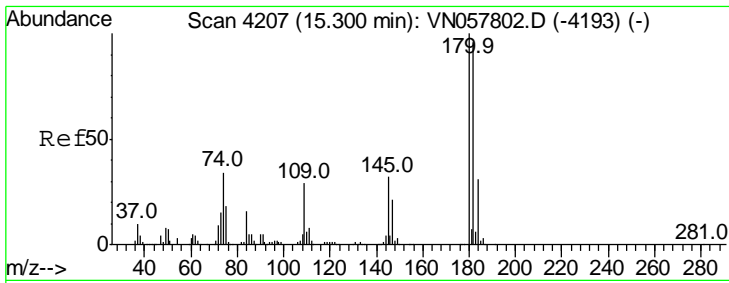
Tgt Ion	Resp	Lower	Upper
75	100		
53	0.0	88.4	132.6#
89	0.0	35.3	52.9#



#95
 Naphthalene
 Concen: Below Cal
 RT: 15.14 min Scan# 4158
 Delta R.T. 0.01 min
 Lab File: VN057837.D
 Acq: 10 Sep 2019 5:46

Tgt Ion	Resp	Lower	Upper
128	100		
127	5.6	10.3	15.5#
129	0.0	8.6	12.8#





#96
 1,2,3-Trichlorobenzene
 Concen: 1.065 ug/l
 RT: 15.30 min Scan# 4207
 Delta R.T. 0.00 min
 Lab File: VN057837.D
 Acq: 10 Sep 2019 5:46

Instrument :
 MSVOA_N
 ClientSampled :

Tot Ion	Ratio	Lower	Upper
180	100		
182	118.5	48.3	144.8
145	0.0	16.3	48.8#

