

Data Path : Z:\VOASRV\HPCHEM1\MSVOA N\DATA\VN091020\
 Data File : VN063301.D
 Acq On : 10 Sep 2020 18:10
 Operator : JC/MD
 Sample : L3930-02
 Misc : 4.13µ/5mL/100uL/5.00mL/MSVOA_N/MEOH
 ALS Vial : 16 Sample Multiplier: 1

Instrument :
 MSVOA_N
 ClientSampled :
 72-11977

Quant Time: Sep 11 06:10:11 2020
 Quant Method : Z:\VOASRV\HPCHEM1\MSVOA_N\METHODS\82N091020W.M
 Quant Title : SW846 8260
 QLast Update : Fri Sep 11 06:02:56 2020
 Response via : Initial Calibration

Internal Standards	R.T.	QIon	Response	Conc	Units	Dev(Min)
1) Pentafluorobenzene	7.62	168	386670	50.00	ug/l	0.00
34) 1,4-Difluorobenzene	8.55	114	734869	50.00	ug/l	0.00
63) Chlorobenzene-d5	11.38	117	697381	50.00	ug/l	0.00
72) 1,4-Dichlorobenzene-d4	13.32	152	281723	50.00	ug/l	0.00

System Monitoring Compounds

33) 1,2-Dichloroethane-d4	7.99	65	299902	49.37	ug/l	0.00
Spiked Amount	50.000		Recovery	=	98.74%	
35) Dibromofluoromethane	7.55	113	231184	48.76	ug/l	0.00
Spiked Amount	50.000		Recovery	=	97.52%	
50) Toluene-d8	10.06	98	922046	50.75	ug/l	0.00
Spiked Amount	50.000		Recovery	=	101.50%	
62) 4-Bromofluorobenzene	12.38	95	342322	51.01	ug/l	0.00
Spiked Amount	50.000		Recovery	=	102.02%	

Target Compounds

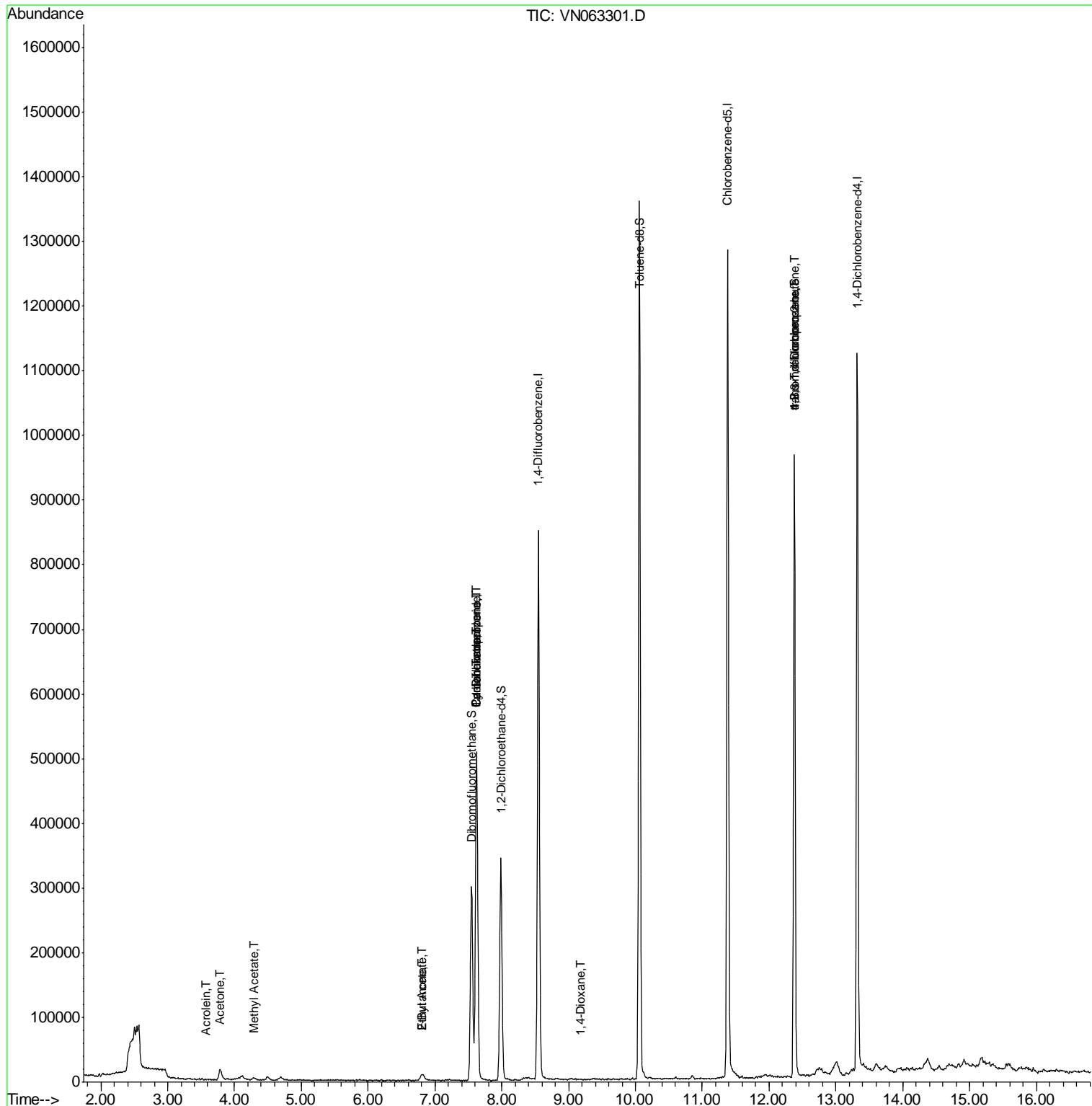
					Qvalue
3) Chloromethane	2.03	50	2540	Below Cal	94
13) Acrolein	3.57	56	97	32.650 ug/l #	14
16) Acetone	3.78	43	29337	13.985 ug/l	95
17) Carbon Disulfide	3.99	76	2753	Below Cal #	75
18) Methyl Acetate	4.29	43	5591	1.060 ug/l	95
20) Methylene Chloride	4.49	84	1636	Below Cal #	84
25) 2-Butanone	6.80	43	5594	1.805 ug/l	95
31) Cyclohexane	7.63	56	11351	1.332 ug/l #	31
36) 1,1-Dichloropropene	7.62	75	34655	4.588 ug/l #	51
37) Ethyl Acetate	6.80	43	5594	0.753 ug/l #	78
38) Carbon Tetrachloride	7.62	117	41167	5.537 ug/l #	16
49) 1,4-Dioxane	9.18	88	33	0.355 ug/l #	1
76) 1,2,3-Trichloropropane	12.38	75	185120	29.785 ug/l #	100
81) trans-1,4-Dichloro-2-buten	12.38	75	185120	80.026 ug/l #	9
88) 1,4-Dichlorobenzene	13.34	146	1289	Below Cal #	1
94) Hexachlorobutadiene	14.98	225	130	Below Cal #	34
95) Naphthalene	15.12	128	2969	Below Cal #	87
96) 1,2,3-Trichlorobenzene	15.28	180	218	Below Cal #	12

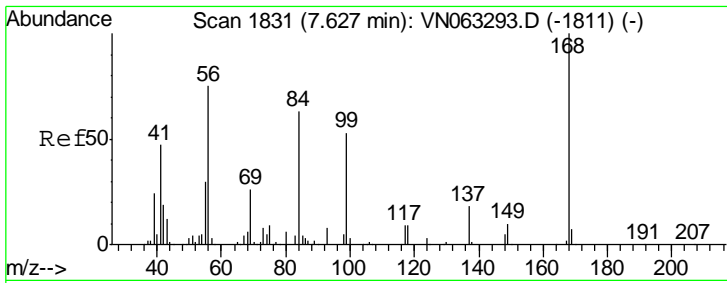
(#) = qualifier out of range (m) = manual integration (+) = signals summed

Data Path : Z:\VOASRV\HPCHEM1\MSVOA N\DATA\VN091020\
 Data File : VN063301.D
 Acq On : 10 Sep 2020 18:10
 Operator : JC/MD
 Sample : L3930-02
 Misc : 4.13µ/5mL/100uL/5.00mL/MSVOA_N/MEOH
 ALS Vial : 16 Sample Multiplier: 1

Instrument :
 MSVOA_N
 Client Sampled :
 72-11977

Quant Time: Sep 11 06:10:11 2020
 Quant Method : Z:\VOASRV\HPCHEM1\MSVOA_N\METHODS\82N091020W.M
 Quant Title : SW846 8260
 QLast Update : Fri Sep 11 06:02:56 2020
 Response via : Initial Calibration

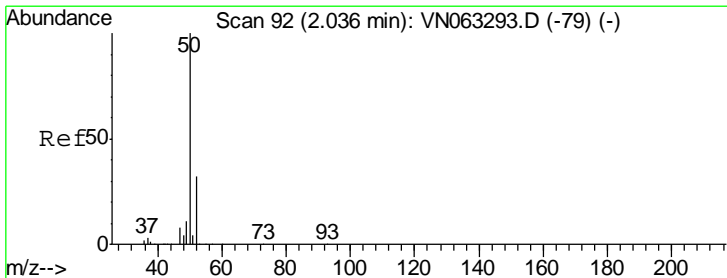
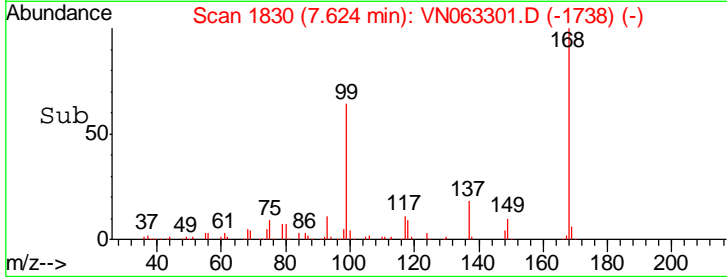
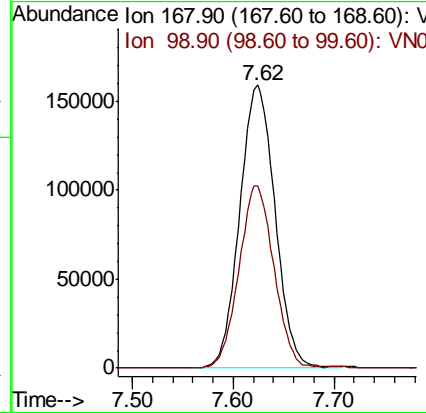
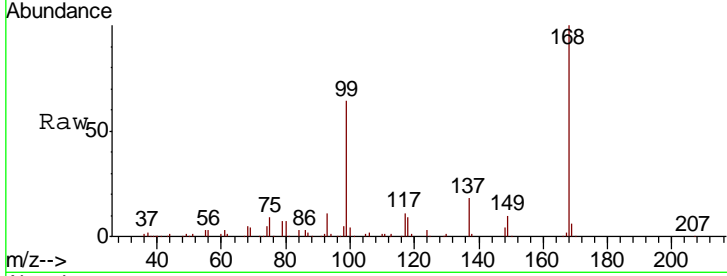




#1
 Pentafluorobenzene
 Concen: 50.000 ug/l
 RT: 7.62 min Scan# 1830
 Delta R.T. -0.00 min
 Lab File: VN063301.D
 Acq: 10 Sep 2020 18:10

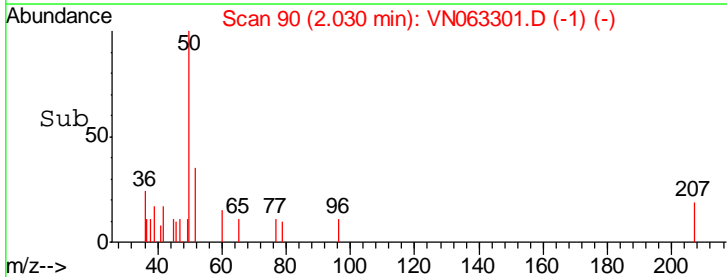
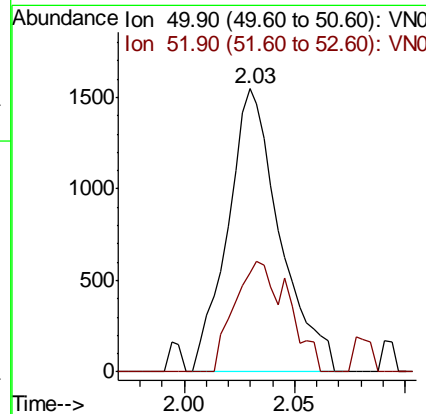
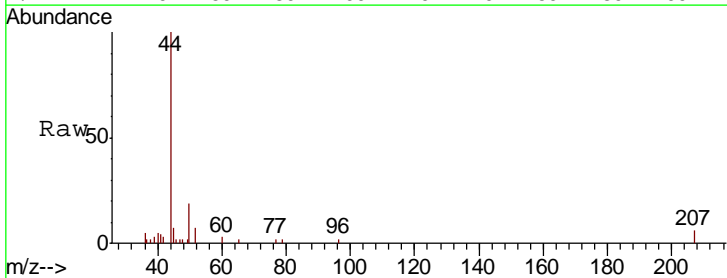
Instrument :
 MSVOA_N
 ClientSampled :
 72-11977

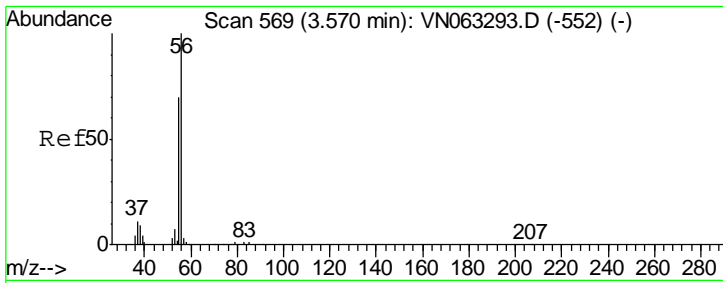
Tot Ion: 168 Resp: 386670
 Ion Ratio Lower Upper
 168 100
 99 64.2 51.1 76.7



#3
 Chloromethane
 Concen: Below Cal
 RT: 2.03 min Scan# 90
 Delta R.T. -0.01 min
 Lab File: VN063301.D
 Acq: 10 Sep 2020 18:10

Tgt Ion: 50 Resp: 2540
 Ion Ratio Lower Upper
 50 100
 52 35.2 25.4 38.2

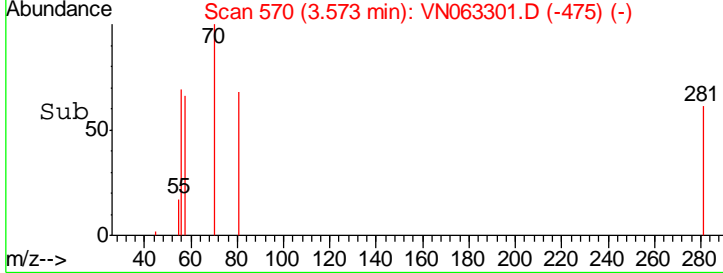
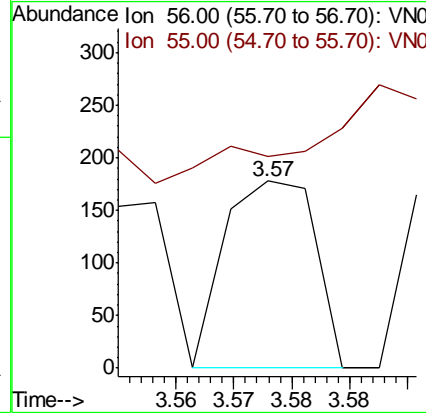
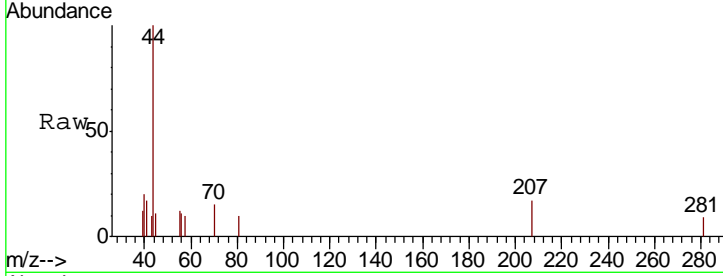




#13
 Acrolein
 Concen: 32.650 ug/l
 RT: 3.57 min Scan# 570
 Delta R.T. 0.00 min
 Lab File: VN063301.D
 Acq: 10 Sep 2020 18:10

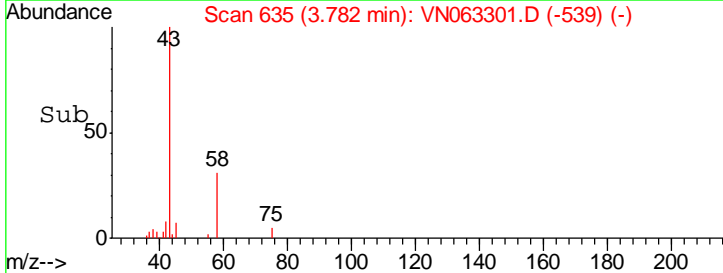
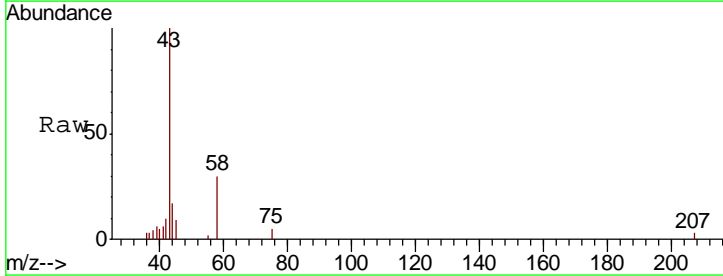
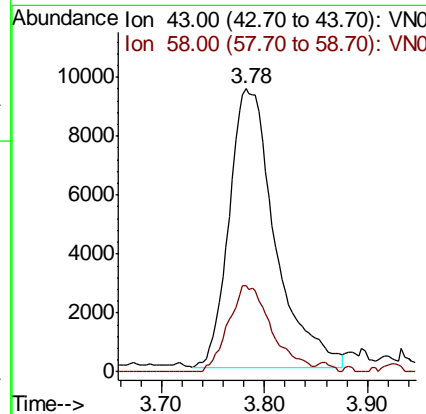
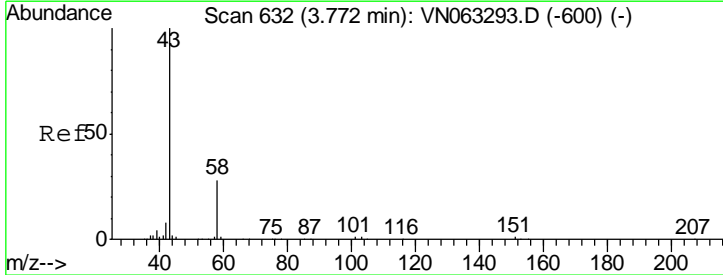
Instrument :
 MSVOA_N
 ClientSampled :
 72-11977

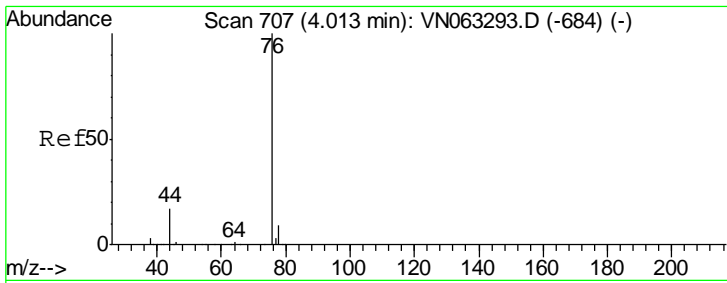
Tgt Ion	Resp	Lower	Upper
56	100		
55	0.0	57.2	85.8#



#16
 Acetone
 Concen: 13.985 ug/l
 RT: 3.78 min Scan# 635
 Delta R.T. 0.01 min
 Lab File: VN063301.D
 Acq: 10 Sep 2020 18:10

Tgt Ion	Resp	Lower	Upper
43	100		
58	30.8	22.6	34.0

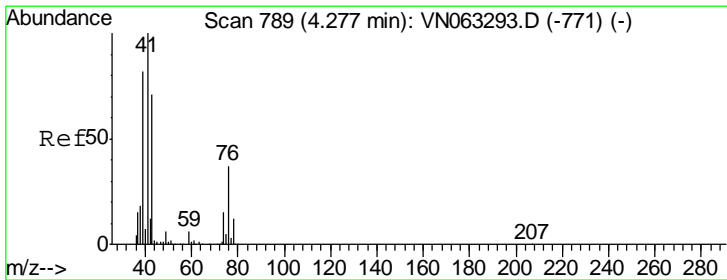
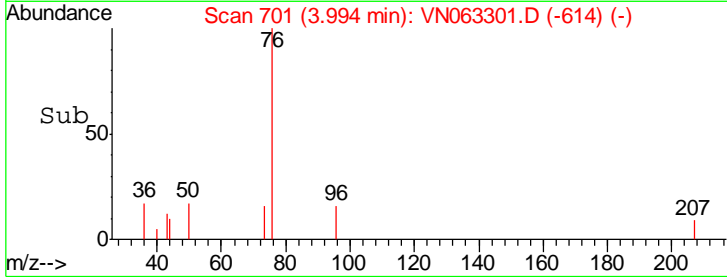
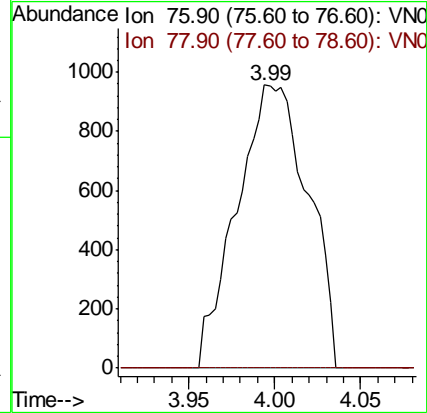
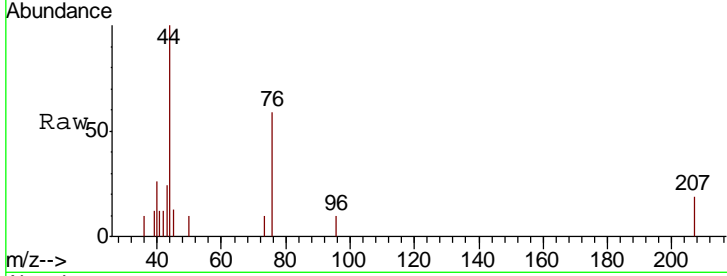




#17
 Carbon Disulfide
 Concen: Below Cal
 RT: 3.99 min Scan# 701
 Delta R.T. -0.02 min
 Lab File: VN063301.D
 Acq: 10 Sep 2020 18:10

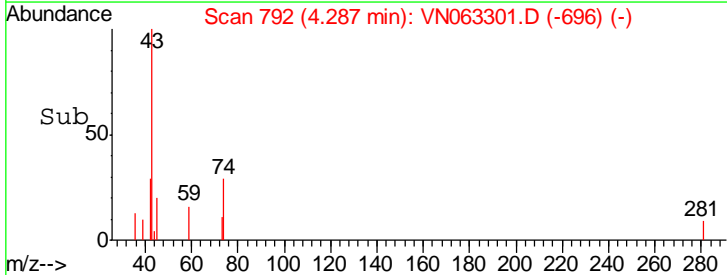
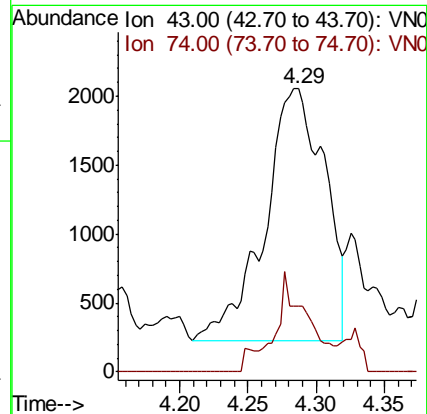
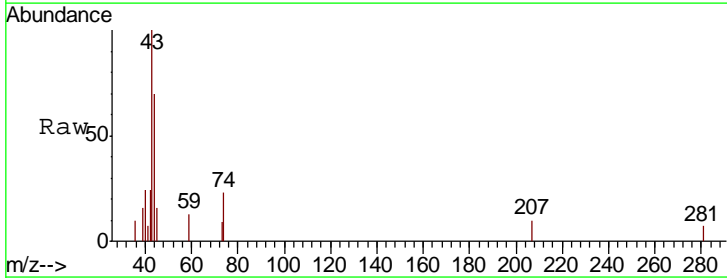
Instrument :
 MSVOA_N
 ClientSampled :
 72-11977

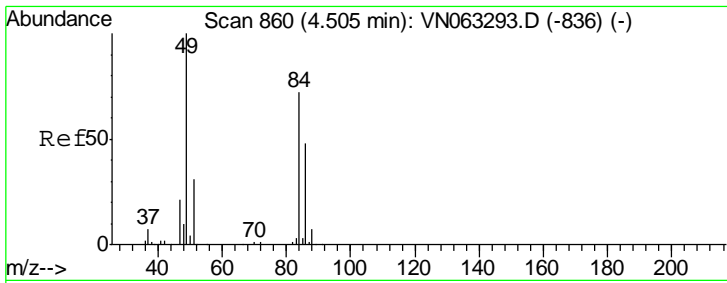
Tgt Ion	Resp	Lower	Upper
76	100		
78	0.0	7.2	10.8#



#18
 Methyl Acetate
 Concen: 1.060 ug/l
 RT: 4.29 min Scan# 792
 Delta R.T. 0.01 min
 Lab File: VN063301.D
 Acq: 10 Sep 2020 18:10

Tgt Ion	Resp	Lower	Upper
43	100		
74	20.0	17.8	26.6

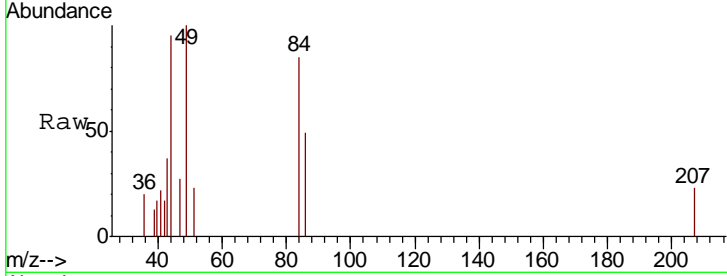




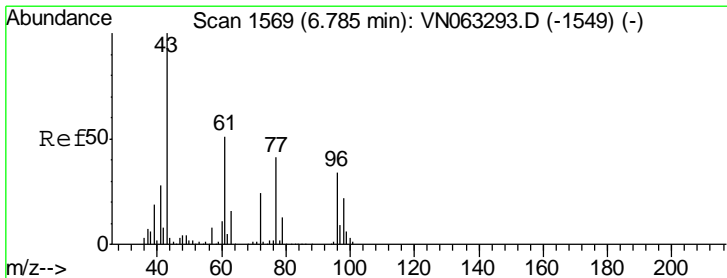
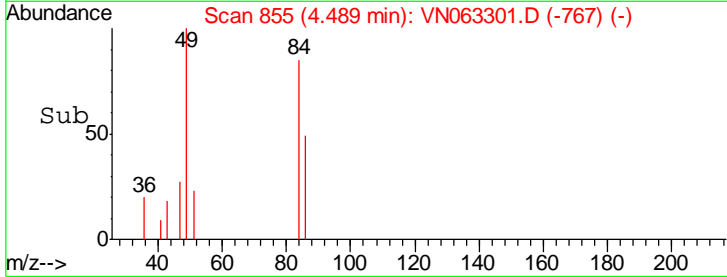
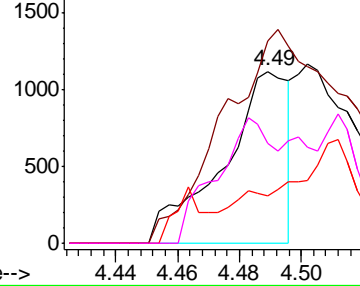
#20
Methylene Chloride
Concen: Below Cal
RT: 4.49 min Scan# 855
Delta R.T. -0.02 min
Lab File: VN063301.D
Acq: 10 Sep 2020 18:10

Instrument :
MSVOA_N
ClientSampled :
72-11977

Tgt Ion	Resp	Lower	Upper
84	1636		
49	118.0	111.1	166.7
51	27.5	34.3	51.5#
86	58.2	52.9	79.3

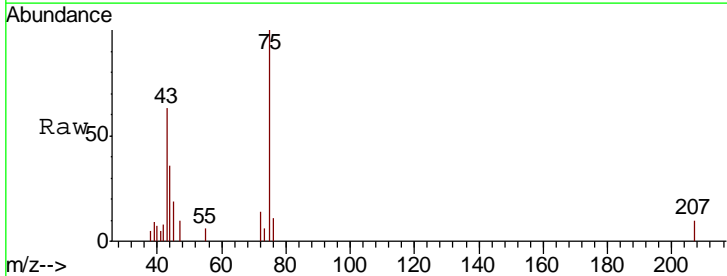


Abundance Ion 83.90 (83.60 to 84.60): VNC
Ion 48.90 (48.60 to 49.60): VNC
Ion 50.90 (50.60 to 51.60): VNC
Ion 85.90 (85.60 to 86.60): VNC

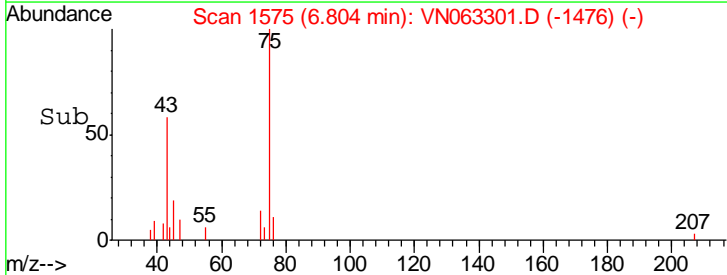
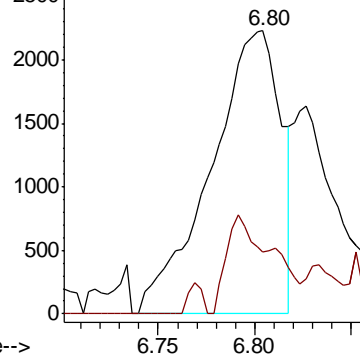


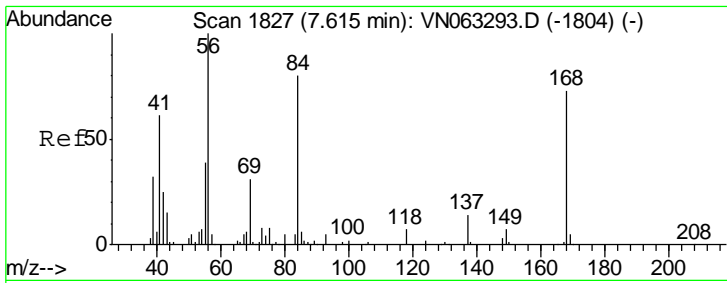
#25
2-Butanone
Concen: 1.805 ug/l
RT: 6.80 min Scan# 1575
Delta R.T. 0.02 min
Lab File: VN063301.D
Acq: 10 Sep 2020 18:10

Tgt Ion	Resp	Lower	Upper
43	5594		
72	21.9	19.4	29.2



Abundance Ion 43.00 (42.70 to 43.70): VNC
Ion 72.00 (71.70 to 72.70): VNC

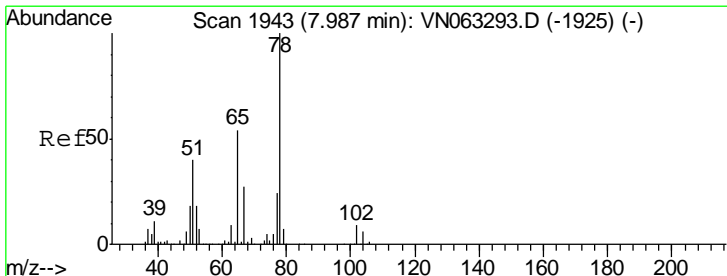
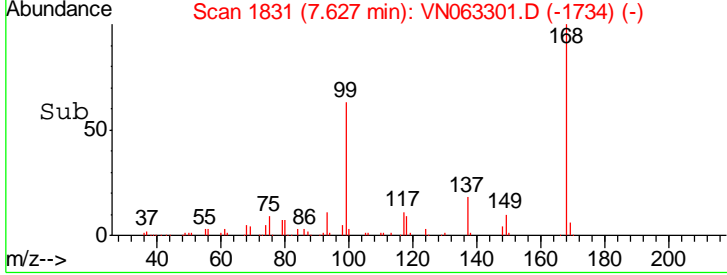
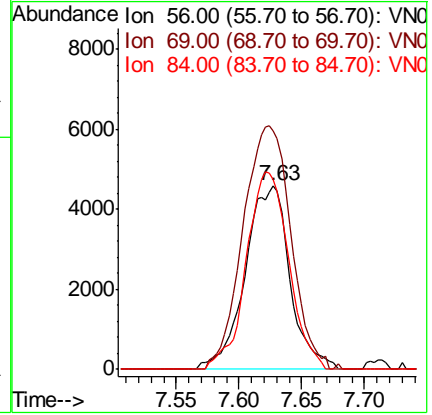
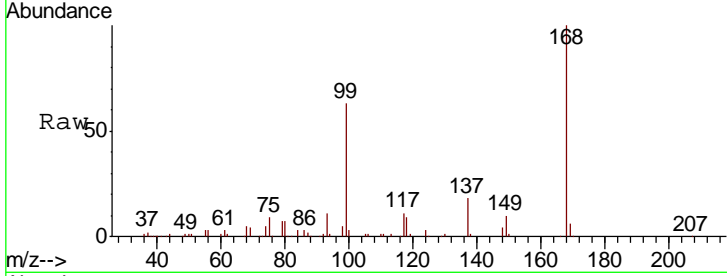




#31
 Cyclohexane
 Concen: 1.332 ug/l
 RT: 7.63 min Scan# 1831
 Delta R.T. 0.01 min
 Lab File: VN063301.D
 Acq: 10 Sep 2020 18:10

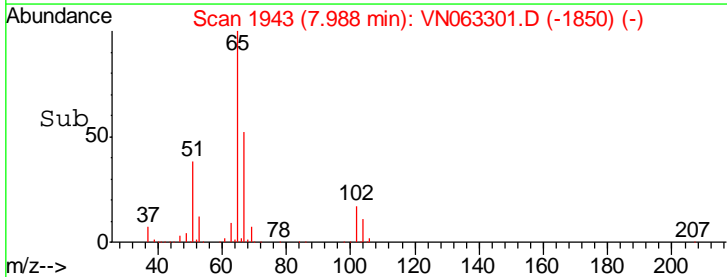
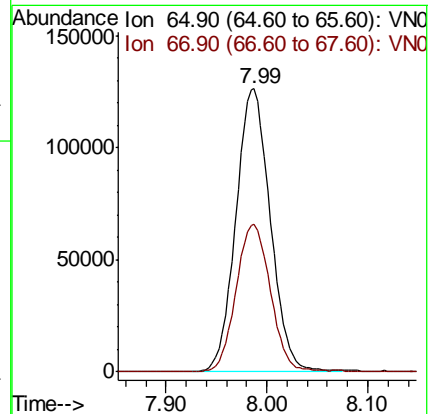
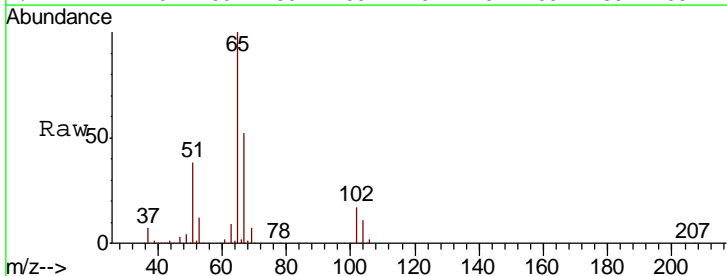
Instrument :
 MSVOA_N
 ClientSampled :
 72-11977

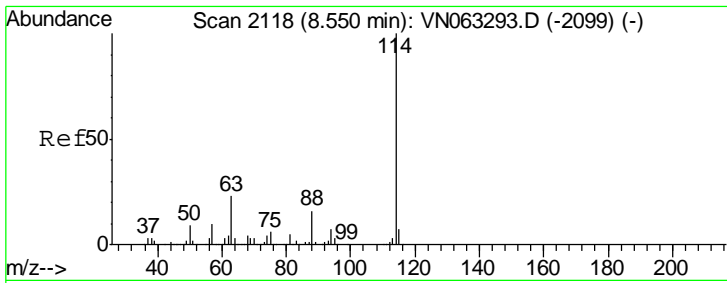
Tgt Ion	Resp	Lower	Upper
56	11351		
69	130.0	25.1	37.7#
84	103.5	64.2	96.2#



#33
 1,2-Dichloroethane-d4
 Concen: 49.366 ug/l
 RT: 7.99 min Scan# 1943
 Delta R.T. 0.00 min
 Lab File: VN063301.D
 Acq: 10 Sep 2020 18:10

Tgt Ion	Resp	Lower	Upper
65	299902		
67	52.1	0.0	104.6

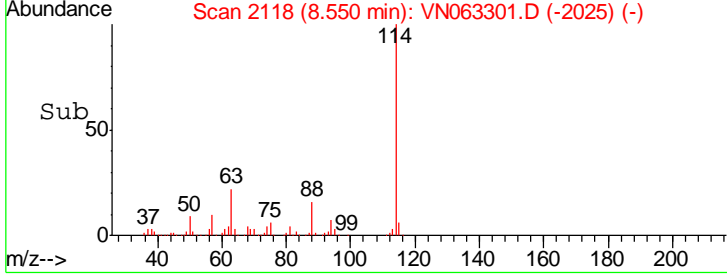
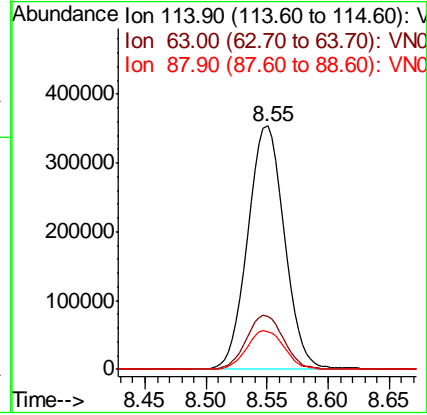
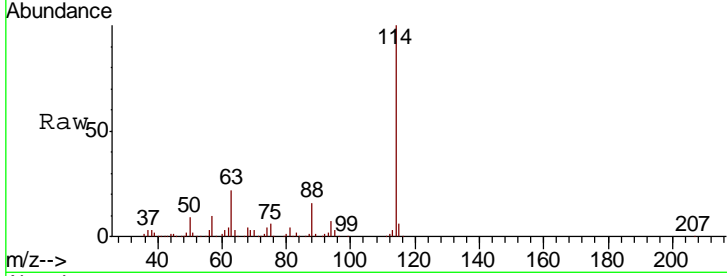




#34
 1,4-Difluorobenzene
 Concen: 50.000 ug/l
 RT: 8.55 min Scan# 2118
 Delta R.T. 0.00 min
 Lab File: VN063301.D
 Acq: 10 Sep 2020 18:10

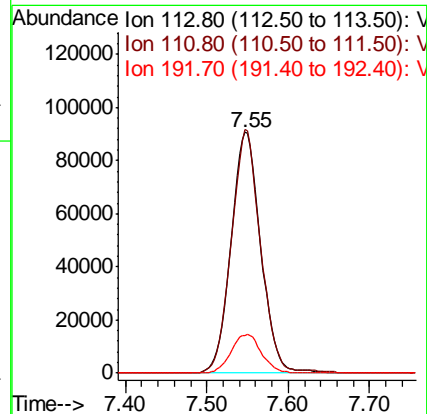
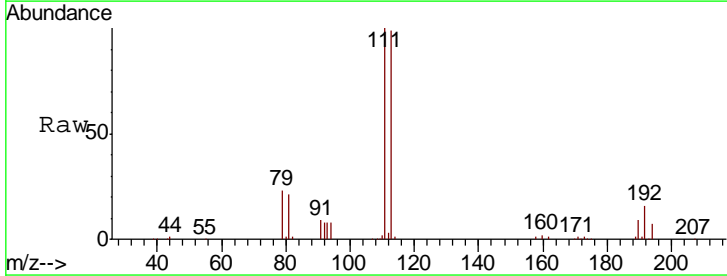
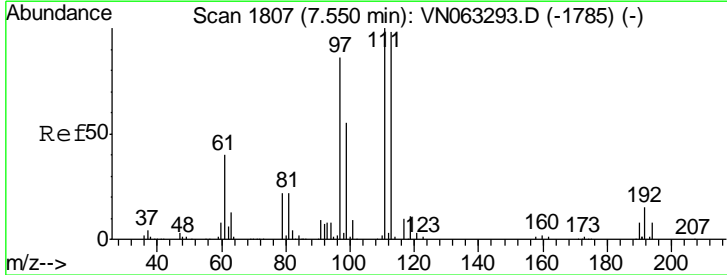
Instrument :
 MSVOA_N
 ClientSampled :
 72-11977

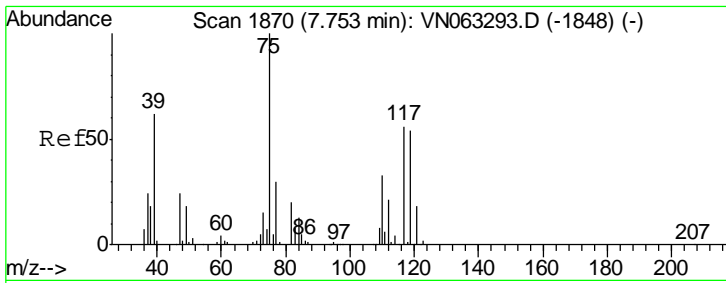
Tgt Ion	Resp	Lower	Upper
114	734869		
63	21.8	0.0	46.0
88	15.7	0.0	32.8



#35
 Dibromofluoromethane
 Concen: 48.764 ug/l
 RT: 7.55 min Scan# 1806
 Delta R.T. -0.00 min
 Lab File: VN063301.D
 Acq: 10 Sep 2020 18:10

Tgt Ion	Resp	Lower	Upper
113	231184		
111	98.5	82.2	123.2
192	16.6	12.9	19.3

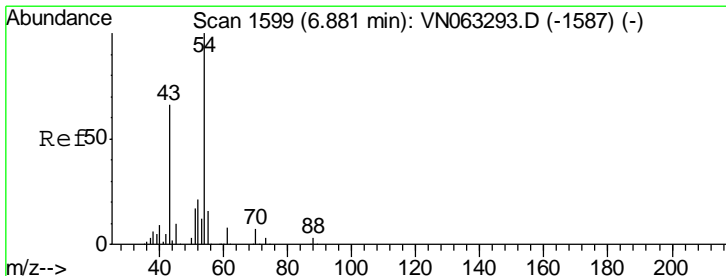
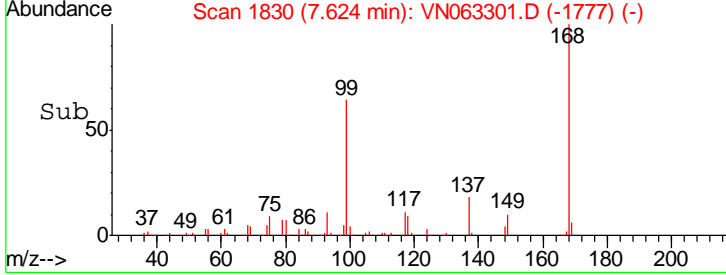
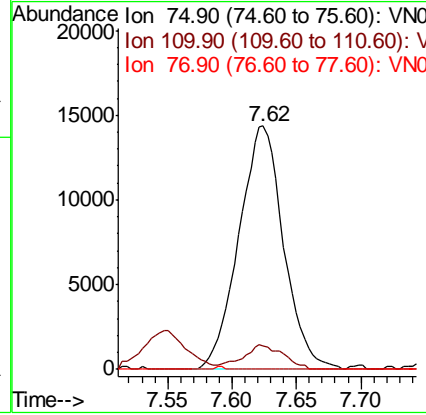
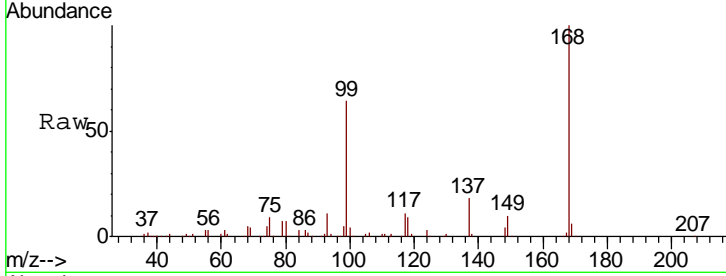




#36
 1,1-Dichloropropene
 Concen: 4.588 ug/l
 RT: 7.62 min Scan# 1830
 Delta R.T. -0.13 min
 Lab File: VN063301.D
 Acq: 10 Sep 2020 18:10

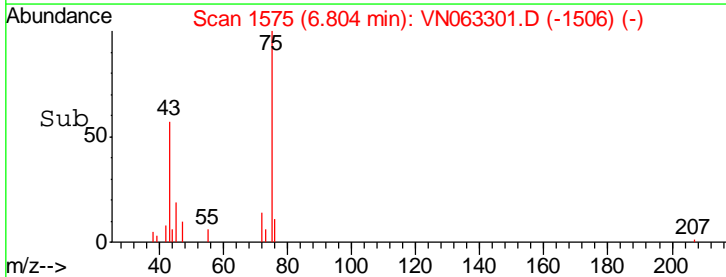
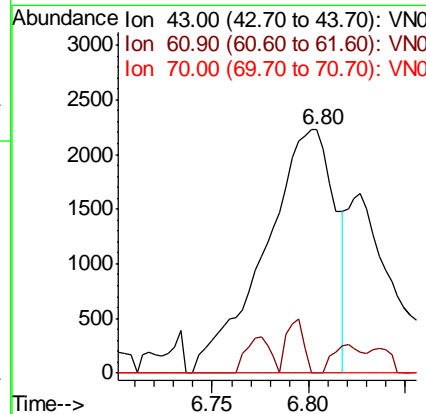
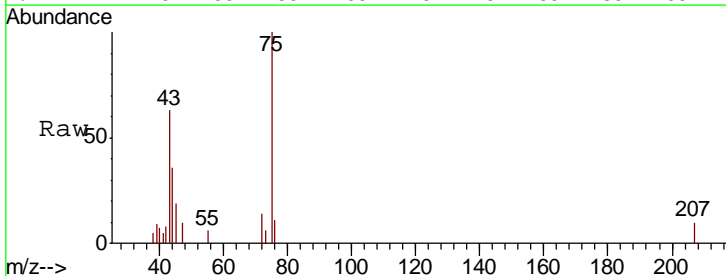
Instrument :
 MSVOA_N
 ClientSampled :
 72-11977

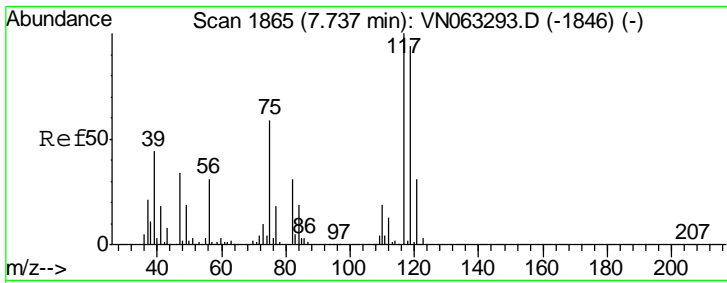
Tgt Ion	Resp	Lower	Upper
75	100		
110	9.1	16.4	49.4#
77	0.0	24.8	37.2#



#37
 Ethyl Acetate
 Concen: 0.753 ug/l
 RT: 6.80 min Scan# 1575
 Delta R.T. -0.08 min
 Lab File: VN063301.D
 Acq: 10 Sep 2020 18:10

Tgt Ion	Resp	Lower	Upper
43	100		
61	5.2	10.1	15.1#
70	0.0	7.4	11.2#

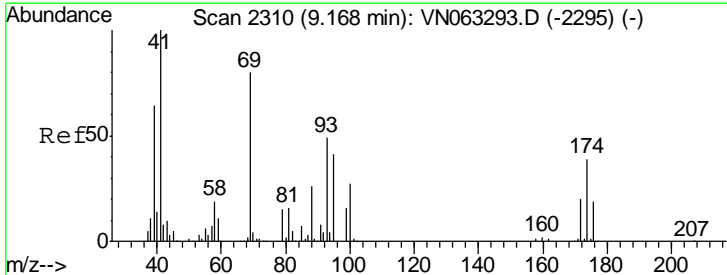
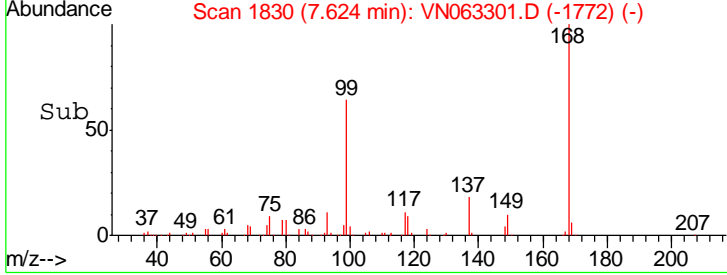
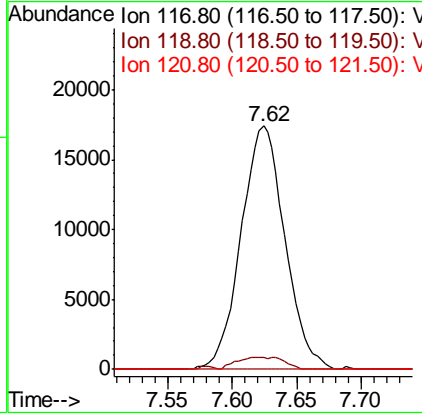
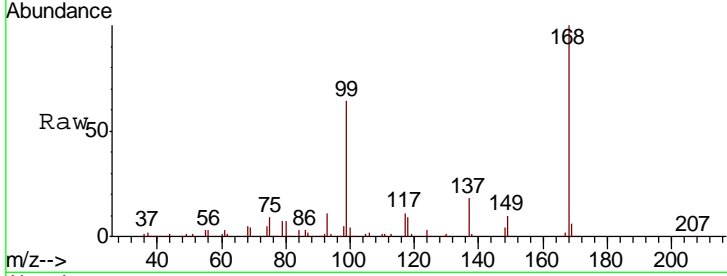




#38
 Carbon Tetrachloride
 Concen: 5.537 ug/l
 RT: 7.62 min Scan# 1830
 Delta R.T. -0.11 min
 Lab File: VN063301.D
 Acq: 10 Sep 2020 18:10

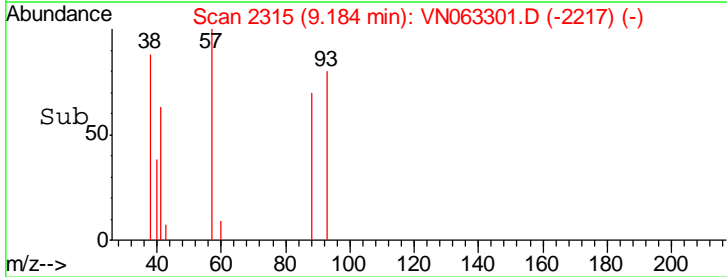
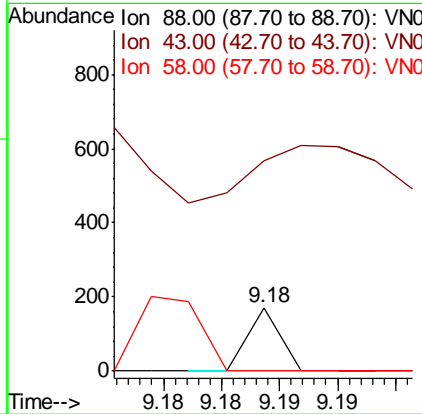
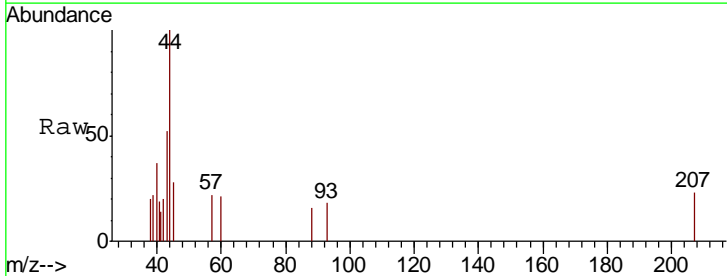
Instrument : MSVOA_N
 ClientSampled : 72-11977

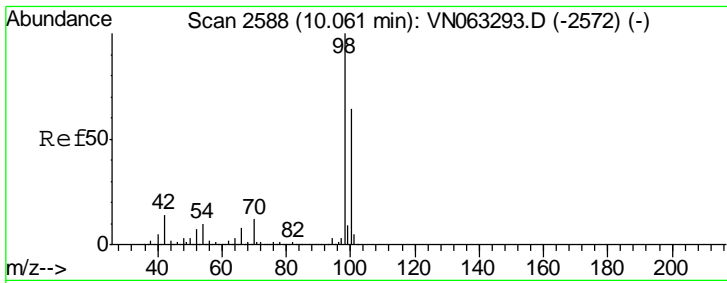
Tgt Ion	Resp	Lower	Upper
117	41167		
119	4.7	75.3	112.9#
121	0.0	24.6	37.0#



#49
 1,4-Dioxane
 Concen: 0.355 ug/l
 RT: 9.18 min Scan# 2315
 Delta R.T. 0.02 min
 Lab File: VN063301.D
 Acq: 10 Sep 2020 18:10

Tgt Ion	Resp	Lower	Upper
88	33		
43	400.0	30.5	45.7#
58	0.0	58.9	88.3#

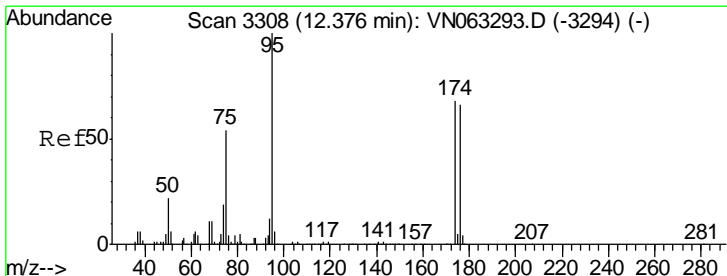
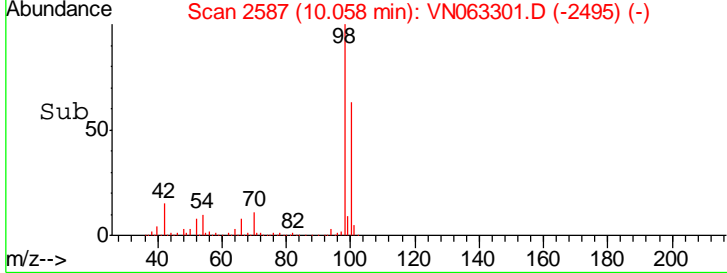
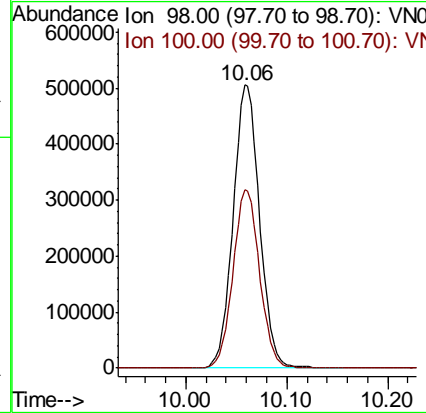
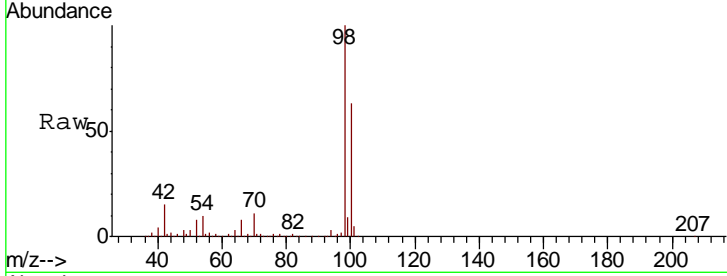




#50
 Toluene-d8
 Concen: 50.751 ug/l
 RT: 10.06 min Scan# 2587
 Delta R.T. -0.00 min
 Lab File: VN063301.D
 Acq: 10 Sep 2020 18:10

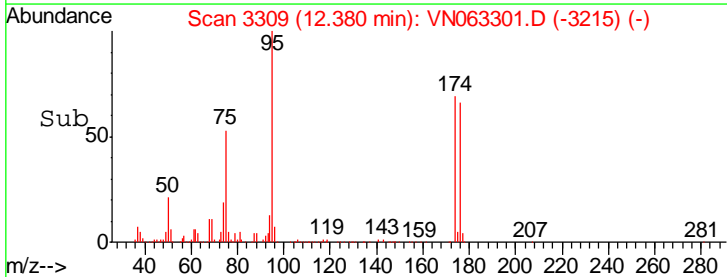
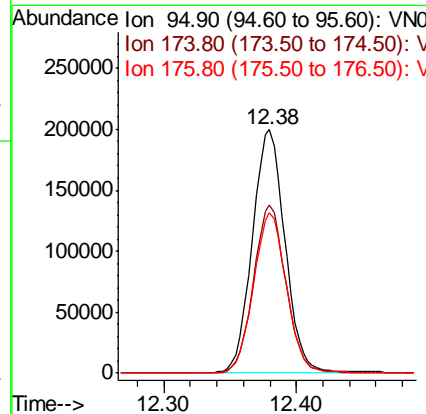
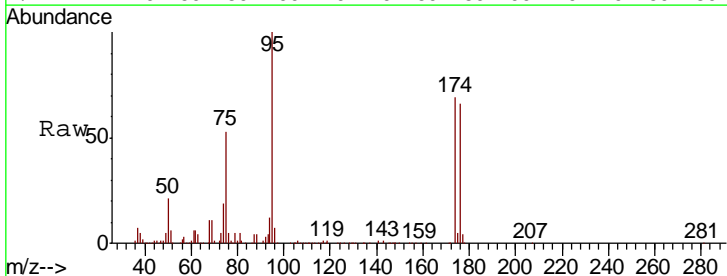
Instrument :
 MSVOA_N
 ClientSampled :
 72-11977

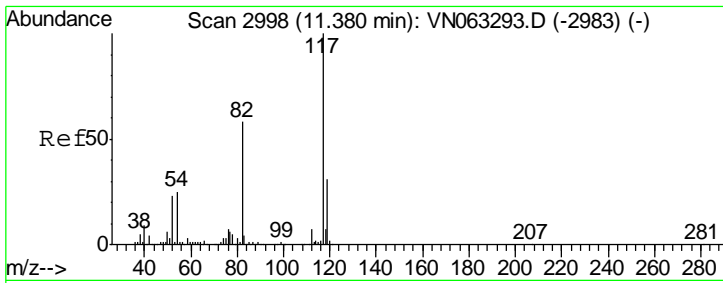
Tgt Ion: 98 Resp: 922046
 Ion Ratio Lower Upper
 98 100
 100 63.6 50.7 76.1



#62
 4-Bromofluorobenzene
 Concen: 51.014 ug/l
 RT: 12.38 min Scan# 3309
 Delta R.T. 0.00 min
 Lab File: VN063301.D
 Acq: 10 Sep 2020 18:10

Tgt Ion: 95 Resp: 342322
 Ion Ratio Lower Upper
 95 100
 174 68.5 0.0 136.6
 176 66.7 0.0 132.8

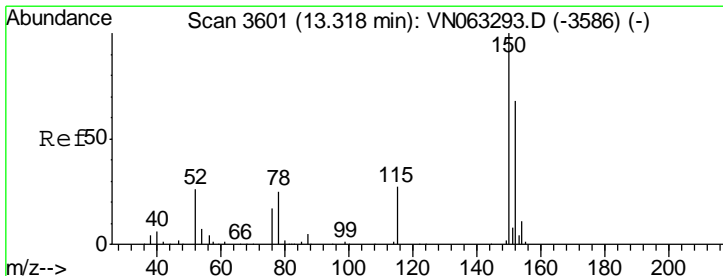
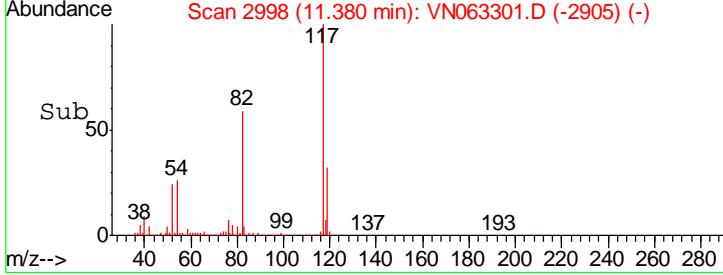
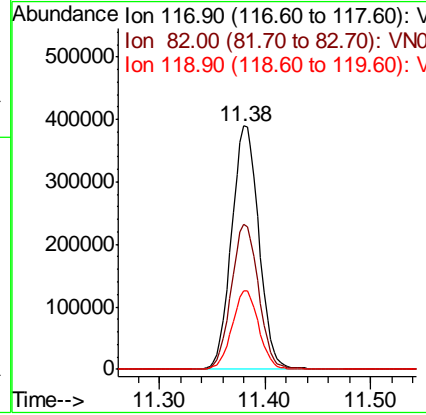
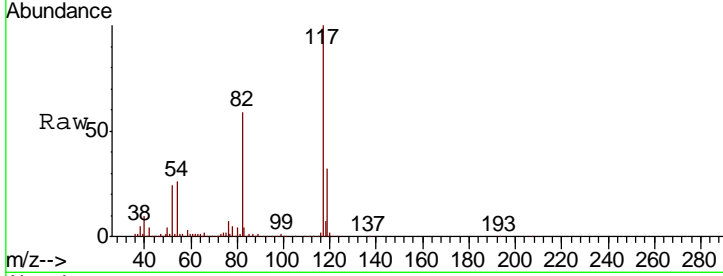




#63
 Chlorobenzene-d5
 Concen: 50.000 ug/l
 RT: 11.38 min Scan# 2998
 Delta R.T. 0.00 min
 Lab File: VN063301.D
 Acq: 10 Sep 2020 18:10

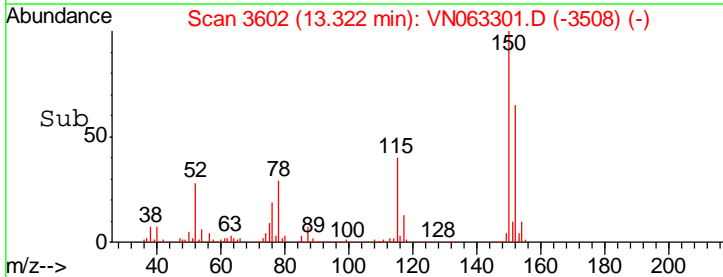
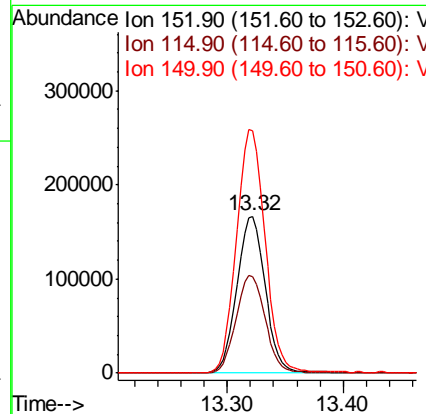
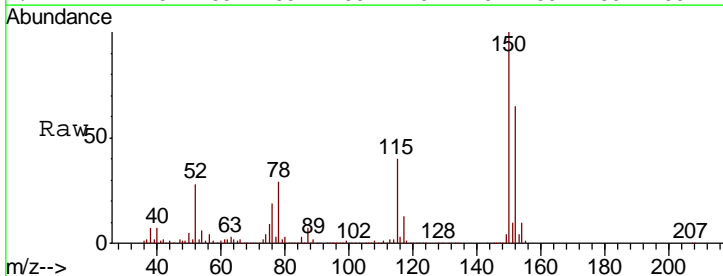
Instrument :
 MSVOA_N
 ClientSampled :
 72-11977

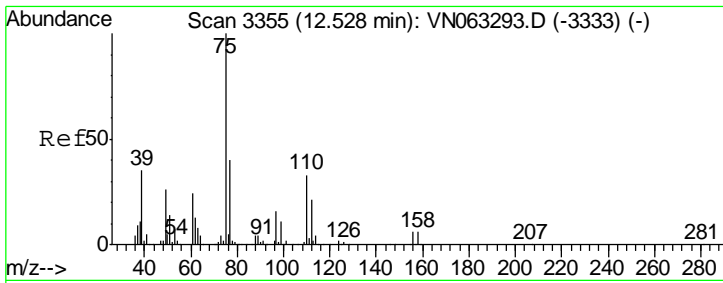
Tgt Ion	Resp	Lower	Upper
117	697381		
82	59.4	46.4	69.6
119	32.1	24.8	37.2



#72
 1,4-Dichlorobenzene-d4
 Concen: 50.000 ug/l
 RT: 13.32 min Scan# 3602
 Delta R.T. 0.00 min
 Lab File: VN063301.D
 Acq: 10 Sep 2020 18:10

Tgt Ion	Resp	Lower	Upper
152	281723		
115	64.1	31.5	94.5
150	156.5	0.0	344.0

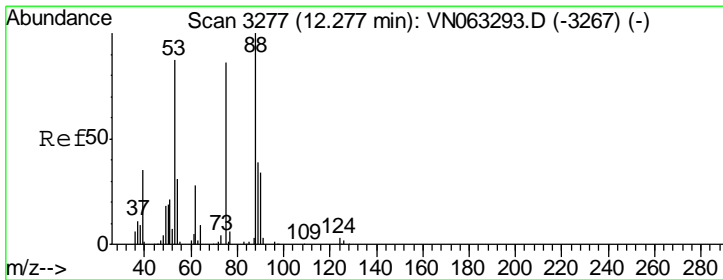
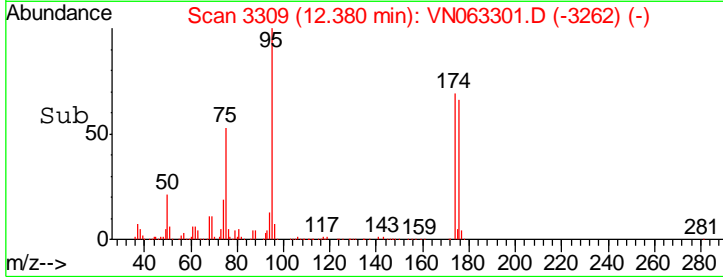
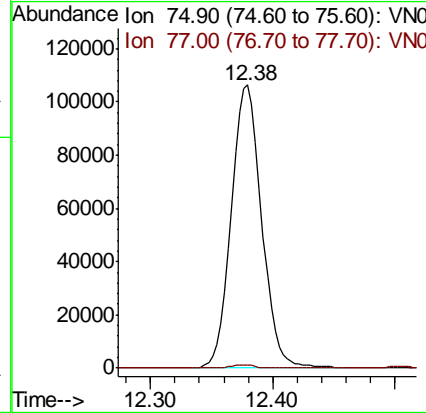
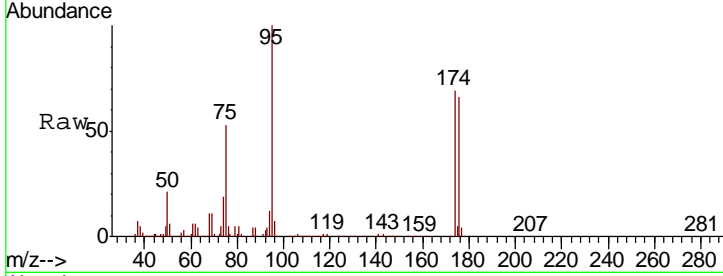




#76
 1,2,3-Trichloropropane
 Concen: 29.785 ug/l
 RT: 12.38 min Scan# 3309
 Delta R.T. -0.15 min
 Lab File: VN063301.D
 Acq: 10 Sep 2020 18:10

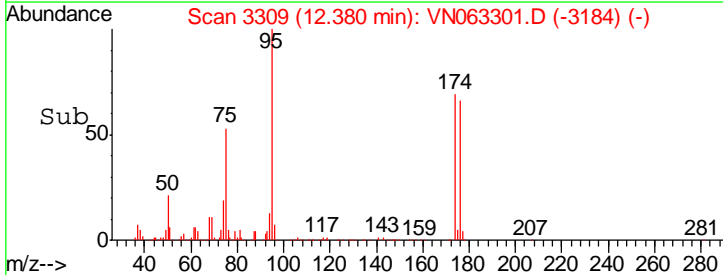
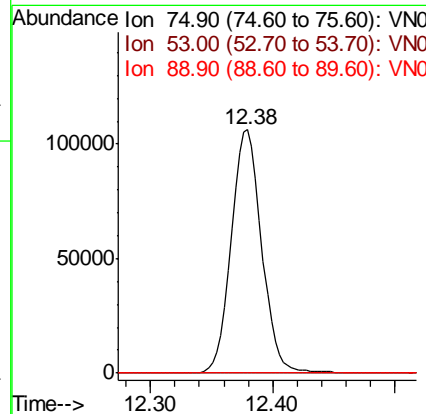
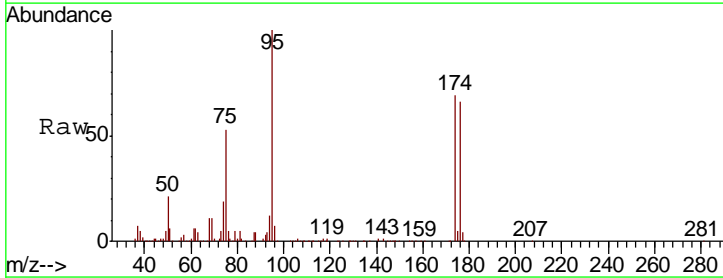
Instrument :
 MSVOA_N
 ClientSampled :
 72-11977

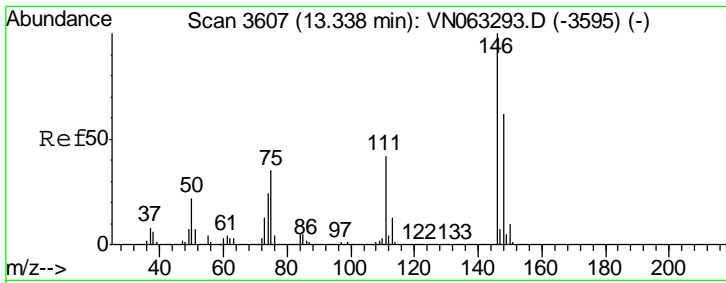
Tgt Ion	Resp	Lower	Upper
75	185120		
75	100		
77	1.0	0.0	0.0#



#81
 trans-1,4-Dichloro-2-butene
 Concen: 80.026 ug/l
 RT: 12.38 min Scan# 3309
 Delta R.T. 0.10 min
 Lab File: VN063301.D
 Acq: 10 Sep 2020 18:10

Tgt Ion	Resp	Lower	Upper
75	185120		
75	100		
53	0.2	81.8	122.8#
89	0.0	36.7	55.1#

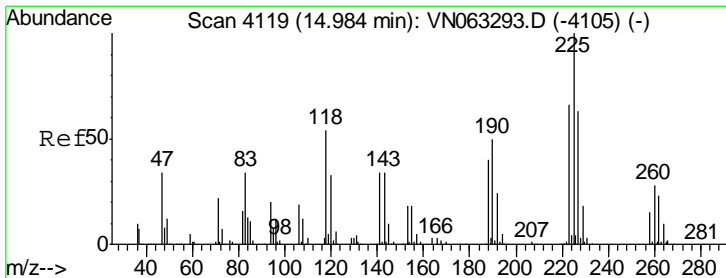
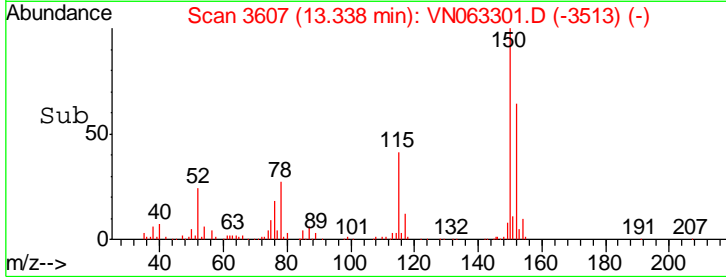
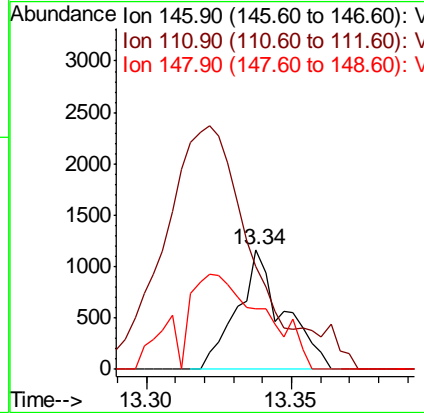
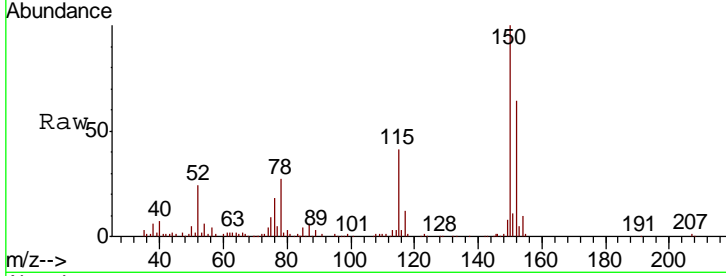




#88
 1,4-Dichlorobenzene
 Concen: Below Cal
 RT: 13.34 min Scan# 3607
 Delta R.T. 0.00 min
 Lab File: VN063301.D
 Acq: 10 Sep 2020 18:10

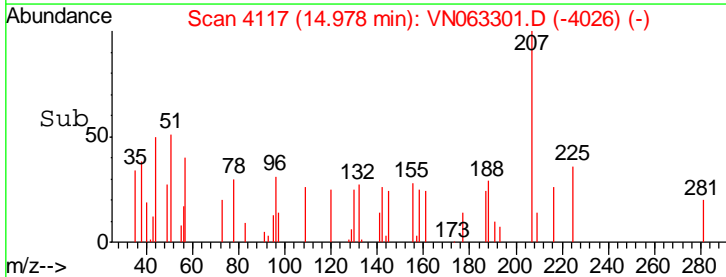
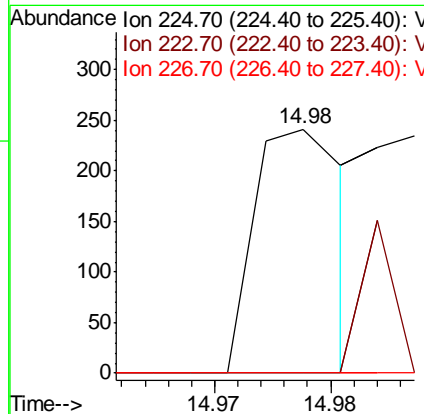
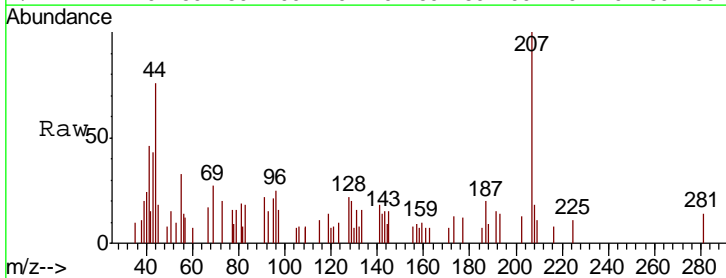
Instrument :
 MSVOA_N
 ClientSampled :
 72-11977

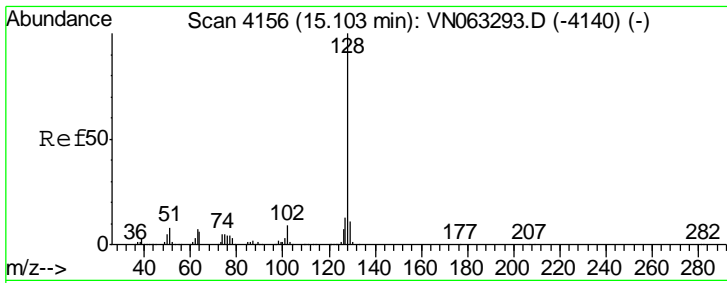
Tgt Ion	Resp	Lower	Upper
146	1289		
111	394.0	21.3	64.0#
148	143.5	31.5	94.5#



#94
 Hexachlorobutadiene
 Concen: Below Cal
 RT: 14.98 min Scan# 4117
 Delta R.T. -0.01 min
 Lab File: VN063301.D
 Acq: 10 Sep 2020 18:10

Tgt Ion	Resp	Lower	Upper
225	130		
223	22.3	31.3	93.9#
227	0.0	31.2	93.6#

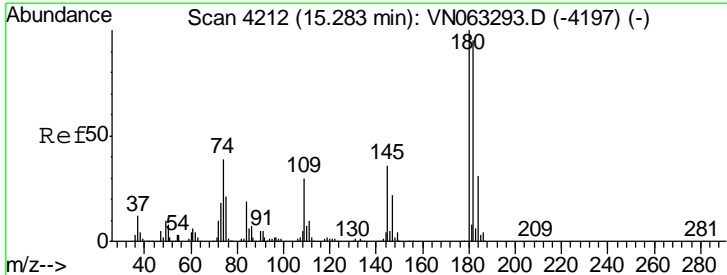
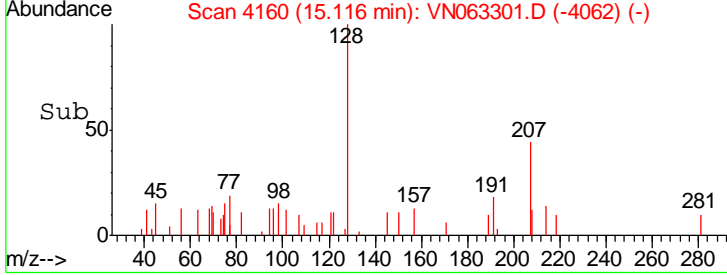
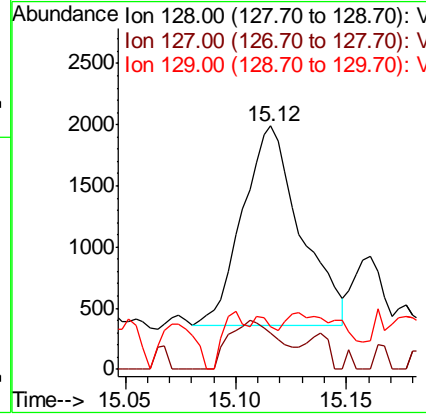
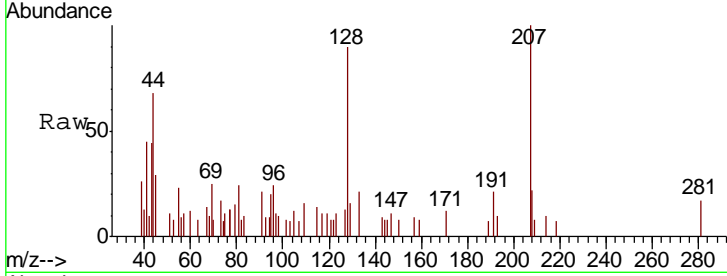




#95
 Naphthalene
 Concen: Below Cal
 RT: 15.12 min Scan# 4160
 Delta R.T. 0.01 min
 Lab File: VN063301.D
 Acq: 10 Sep 2020 18:10

Instrument : MSVOA_N
 ClientSampled : 72-11977

Tgt Ion	Resp	Lower	Upper
128	2969		
127	20.7	10.3	15.5#
129	12.3	8.6	12.8



#96
 1,2,3-Trichlorobenzene
 Concen: Below Cal
 RT: 15.28 min Scan# 4210
 Delta R.T. -0.01 min
 Lab File: VN063301.D
 Acq: 10 Sep 2020 18:10

Tgt Ion	Resp	Lower	Upper
180	218		
182	0.0	47.4	142.3#
145	0.0	17.2	51.6#

