

Data Path : Z:\VOASRV\HPCHEM1\MSVOA N\DATA\VN091120\
 Data File : VN063321.D
 Acq On : 11 Sep 2020 17:54
 Operator : JC/MD
 Sample : L3988-09
 Misc : 5.00mL/MSVOA N/WATER
 ALS Vial : 19 Sample Multiplier: 1

Instrument :
 MSVOA_N
 ClientSampleId :

Quant Time: Sep 12 00:42:49 2020
 Quant Method : Z:\VOASRV\HPCHEM1\MSVOA_N\METHODS\82N091020W.M
 Quant Title : SW846 8260
 QLast Update : Fri Sep 11 06:02:56 2020
 Response via : Initial Calibration

Internal Standards	R.T.	QIon	Response	Conc	Units	Dev(Min)
1) Pentafluorobenzene	7.63	168	364326	50.00	ug/l	0.00
34) 1,4-Difluorobenzene	8.55	114	685853	50.00	ug/l	0.00
63) Chlorobenzene-d5	11.38	117	668825	50.00	ug/l	0.00
72) 1,4-Dichlorobenzene-d4	13.32	152	269301	50.00	ug/l	0.00

System Monitoring Compounds

33) 1,2-Dichloroethane-d4	7.99	65	289102	50.51	ug/l	0.00
Spiked Amount	50.000		Recovery	=	101.02%	
35) Dibromofluoromethane	7.55	113	222974	50.39	ug/l	0.00
Spiked Amount	50.000		Recovery	=	100.78%	
50) Toluene-d8	10.06	98	873484	51.51	ug/l	0.00
Spiked Amount	50.000		Recovery	=	103.02%	
62) 4-Bromofluorobenzene	12.38	95	331690	52.96	ug/l	0.00
Spiked Amount	50.000		Recovery	=	105.92%	

Target Compounds

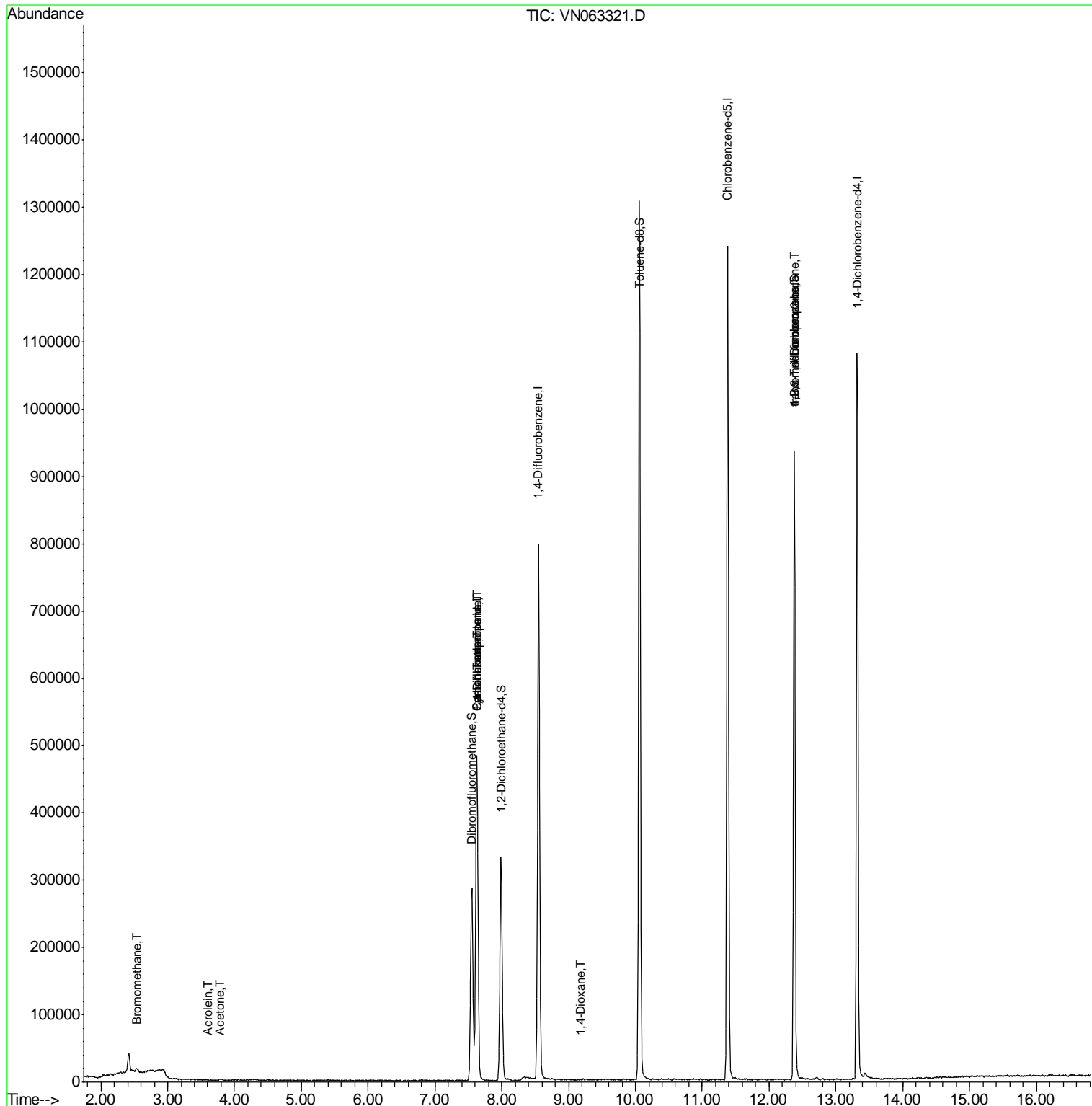
					Qvalue	
3) Chloromethane	2.04	50	1879	Below Cal	#	86
5) Bromomethane	2.55	94	816	0.236	ug/l	93
13) Acrolein	3.60	56	70	32.605	ug/l #	64
16) Acetone	3.78	43	973	0.492	ug/l #	46
17) Carbon Disulfide	4.02	76	701	Below Cal	#	75
20) Methylene Chloride	4.51	84	413	Below Cal	#	55
31) Cyclohexane	7.62	56	10152	1.265	ug/l #	19
36) 1,1-Dichloropropene	7.63	75	33459	4.746	ug/l #	50
38) Carbon Tetrachloride	7.63	117	40467	5.832	ug/l #	17
49) 1,4-Dioxane	9.16	88	117	1.348	ug/l #	1
76) 1,2,3-Trichloropropane	12.38	75	177782	29.924	ug/l #	100
81) trans-1,4-Dichloro-2-buten	12.38	75	177782	80.399	ug/l #	9
88) 1,4-Dichlorobenzene	13.35	146	193	Below Cal	#	25
95) Naphthalene	15.11	128	647	Below Cal	#	69
96) 1,2,3-Trichlorobenzene	15.31	180	106	Below Cal	#	12

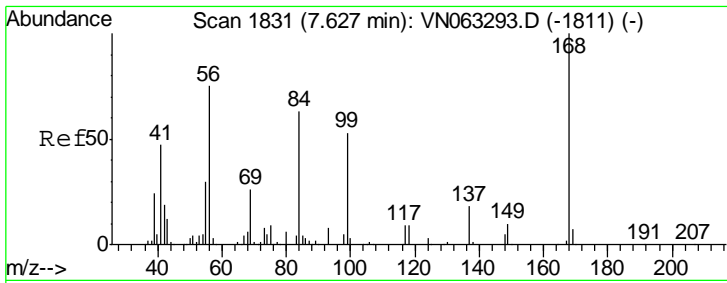
(#) = qualifier out of range (m) = manual integration (+) = signals summed

Data Path : Z:\VOASRV\HPCHEM1\MSVOA N\DATA\VN091120\
 Data File : VN063321.D
 Acq On : 11 Sep 2020 17:54
 Operator : JC/MD
 Sample : L3988-09
 Misc : 5.00mL/MSVOA N/WATER
 ALS Vial : 19 Sample Multiplier: 1

Instrument :
 MSVOA_N
 ClientSampleId :

Quant Time: Sep 12 00:42:49 2020
 Quant Method : Z:\VOASRV\HPCHEM1\MSVOA_N\METHODS\82N091020W.M
 Quant Title : SW846 8260
 QLast Update : Fri Sep 11 06:02:56 2020
 Response via : Initial Calibration

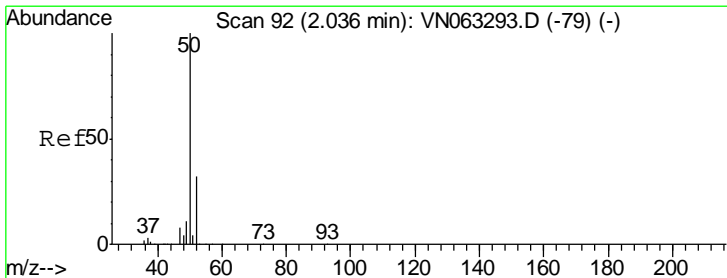
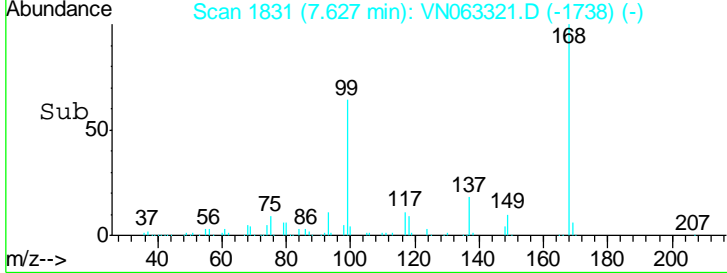
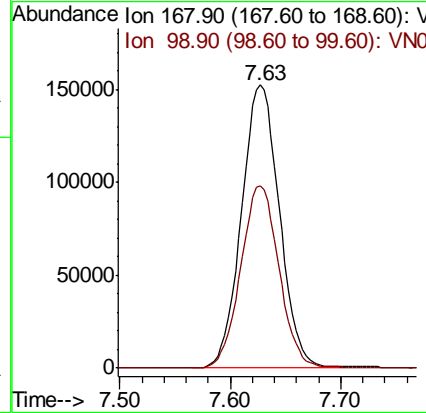
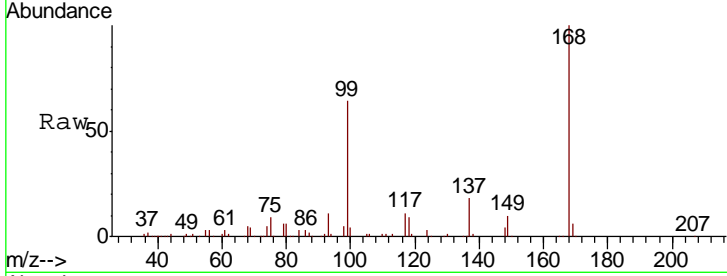




#1
 Pentafluorobenzene
 Concen: 50.000 ug/l
 RT: 7.63 min Scan# 1831
 Delta R.T. -0.00 min
 Lab File: VN063321.D
 Acq: 11 Sep 2020 17:54

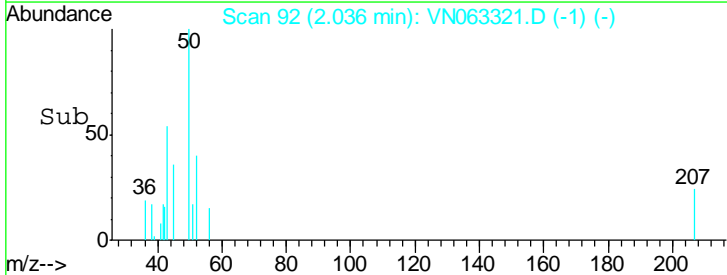
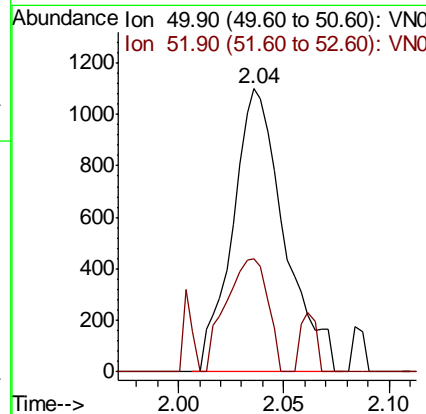
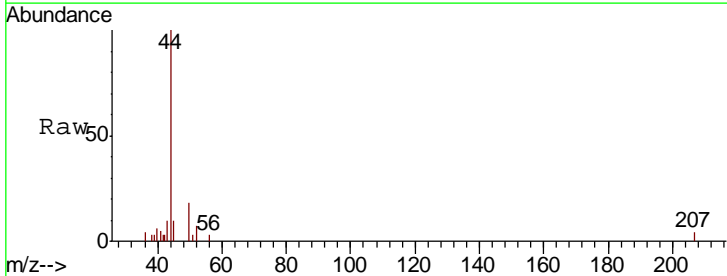
Instrument :
 MSVOA_N
 ClientSampled :

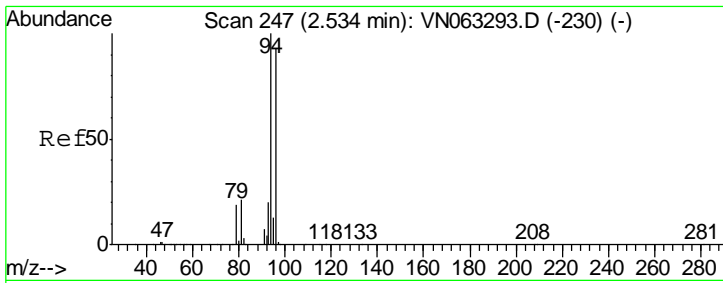
Tgt Ion: 168 Resp: 364326
 Ion Ratio Lower Upper
 168 100
 99 64.3 51.1 76.7



#3
 Chloromethane
 Concen: Below Cal
 RT: 2.04 min Scan# 92
 Delta R.T. 0.00 min
 Lab File: VN063321.D
 Acq: 11 Sep 2020 17:54

Tgt Ion: 50 Resp: 1879
 Ion Ratio Lower Upper
 50 100
 52 39.9 25.4 38.2#

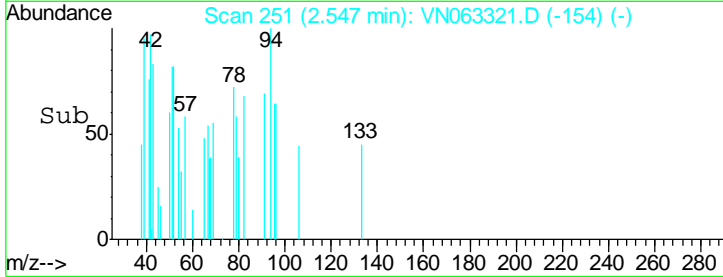
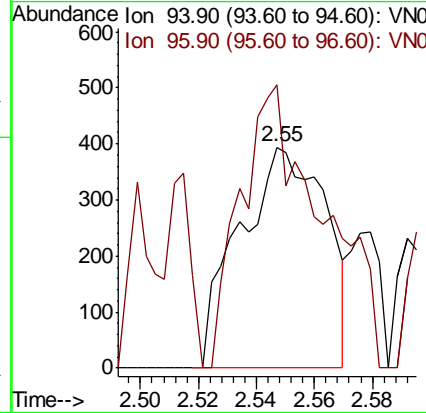
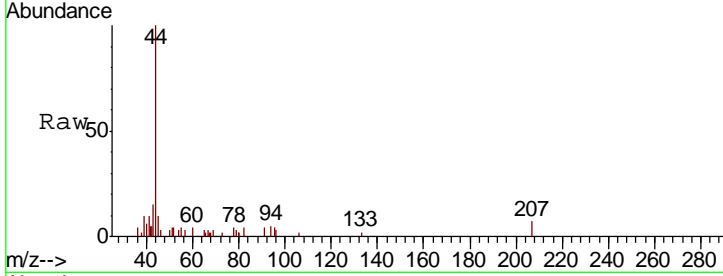




#5
 Bromomethane
 Concen: 0.236 ug/l
 RT: 2.55 min Scan# 251
 Delta R.T. 0.01 min
 Lab File: VN063321.D
 Acq: 11 Sep 2020 17:54

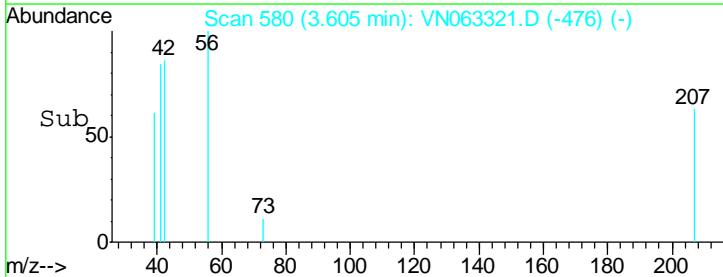
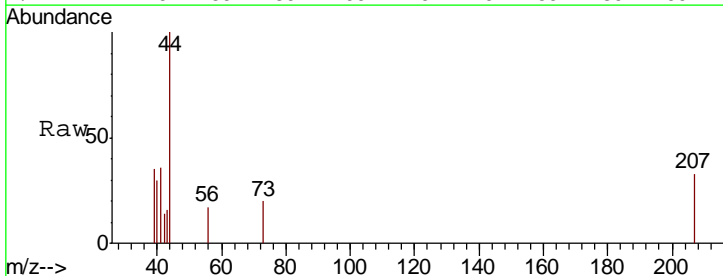
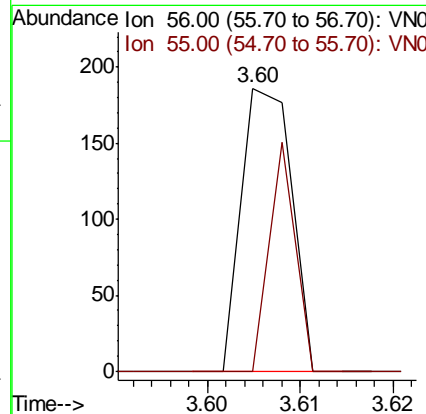
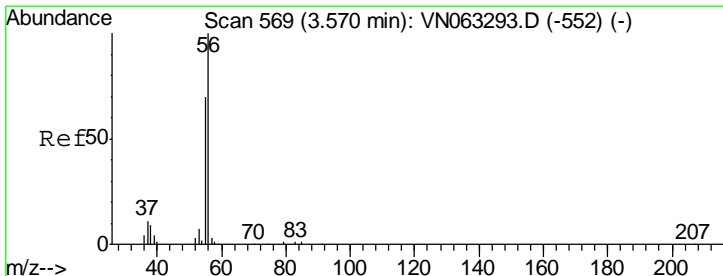
Instrument :
 MSVOA_N
 ClientSampled :

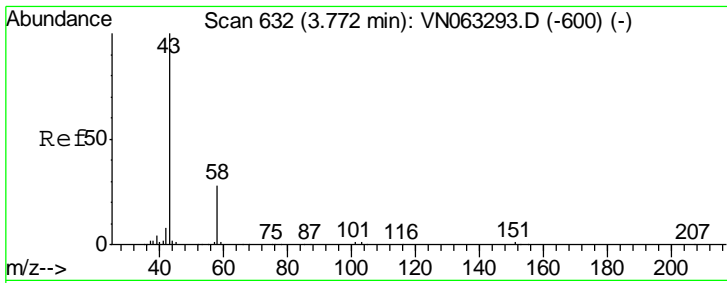
Tgt Ion: 94 Resp: 816
 Ion Ratio Lower Upper
 94 100
 96 86.0 74.3 111.5



#13
 Acrolein
 Concen: 32.605 ug/l
 RT: 3.60 min Scan# 580
 Delta R.T. 0.04 min
 Lab File: VN063321.D
 Acq: 11 Sep 2020 17:54

Tgt Ion: 56 Resp: 70
 Ion Ratio Lower Upper
 56 100
 55 41.4 57.2 85.8#

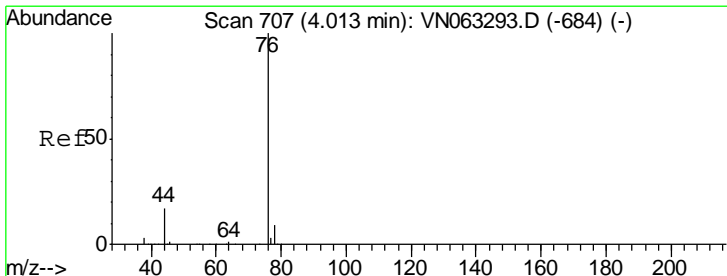
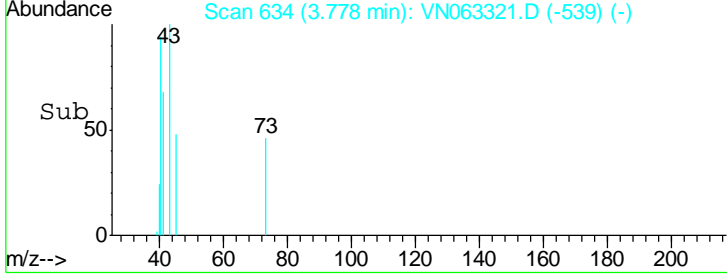
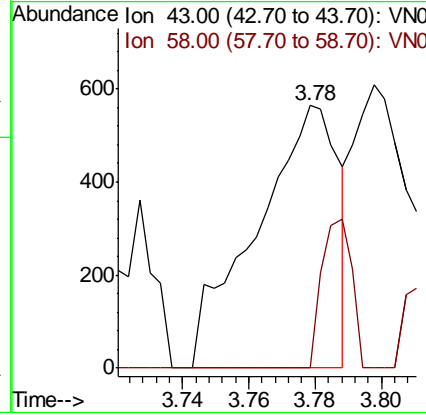
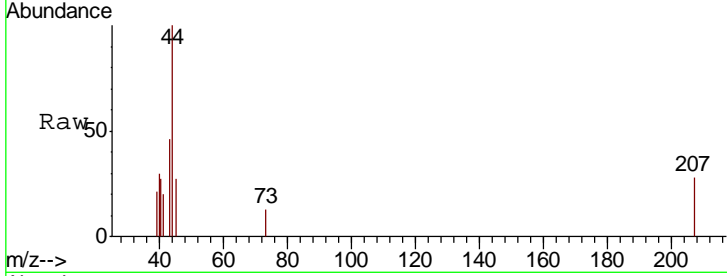




#16
 Acetone
 Concen: 0.492 ug/l
 RT: 3.78 min Scan# 634
 Delta R.T. 0.01 min
 Lab File: VN063321.D
 Acq: 11 Sep 2020 17:54

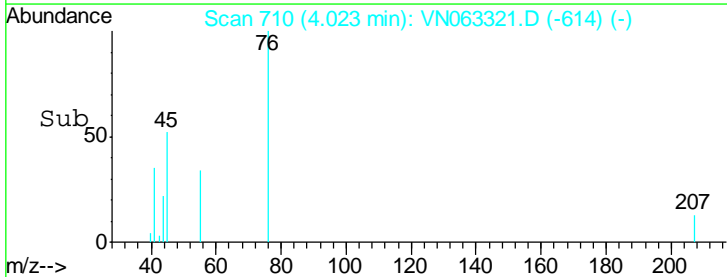
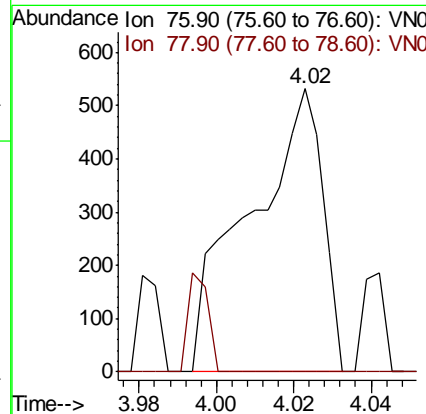
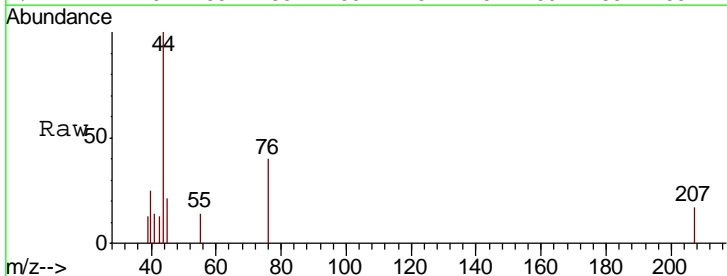
Instrument :
 MSVOA_N
 ClientSampled :

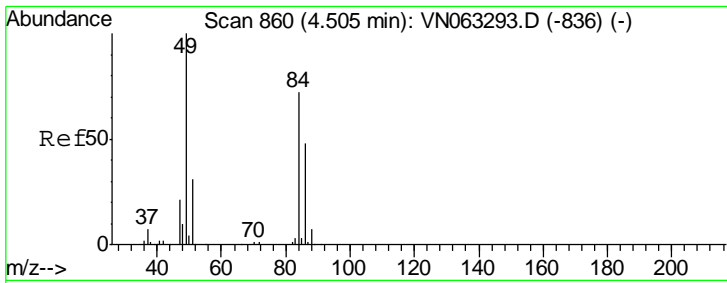
Tgt Ion: 43 Resp: 973
 Ion Ratio Lower Upper
 43 100
 58 0.0 22.6 34.0#



#17
 Carbon Disulfide
 Concen: Below Cal
 RT: 4.02 min Scan# 710
 Delta R.T. 0.01 min
 Lab File: VN063321.D
 Acq: 11 Sep 2020 17:54

Tgt Ion: 76 Resp: 701
 Ion Ratio Lower Upper
 76 100
 78 0.0 7.2 10.8#

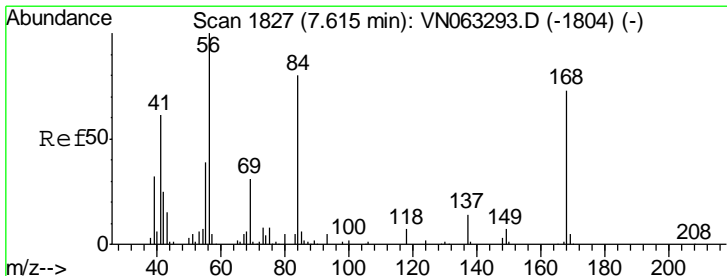
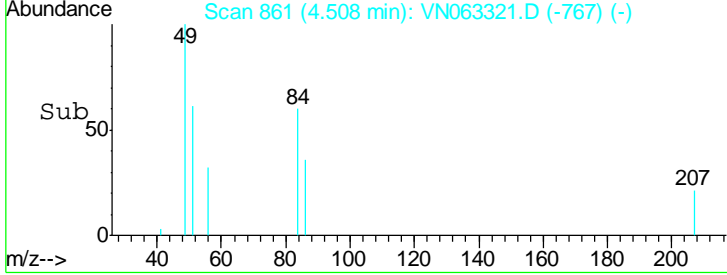
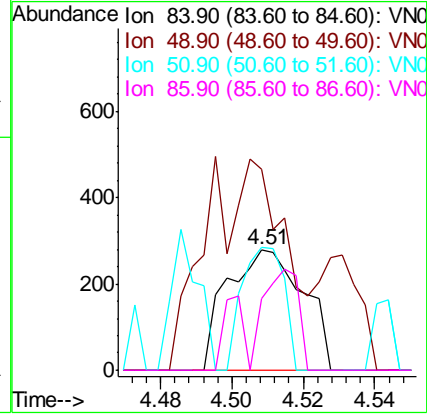
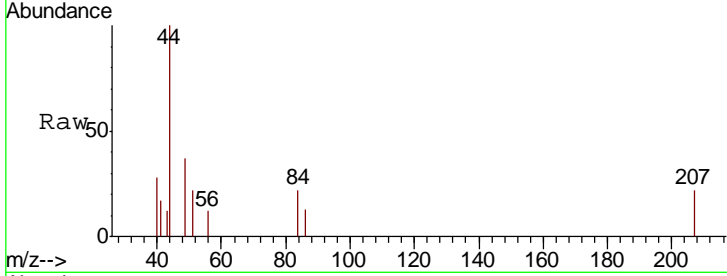




#20
 Methylene Chloride
 Concen: Below Cal
 RT: 4.51 min Scan# 861
 Delta R.T. 0.00 min
 Lab File: VN063321.D
 Acq: 11 Sep 2020 17:54

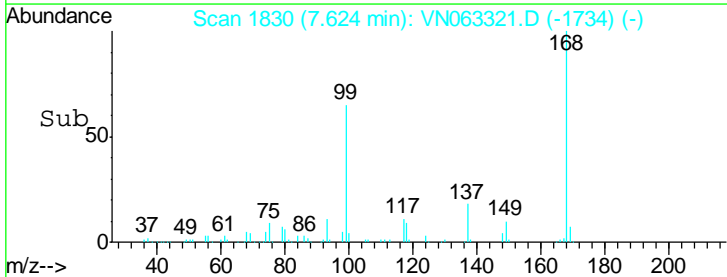
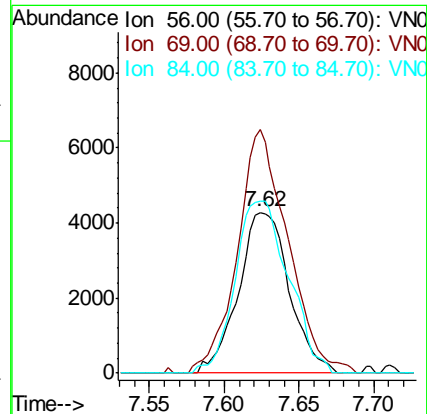
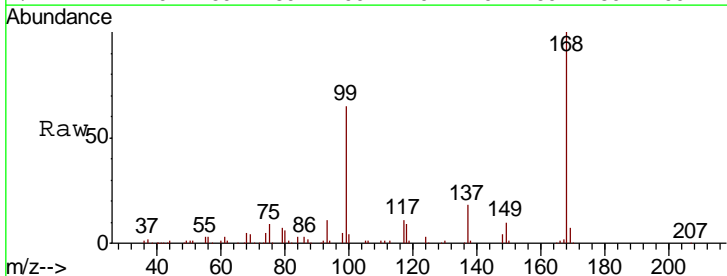
Instrument :
 MSVOA_N
 ClientSampled :

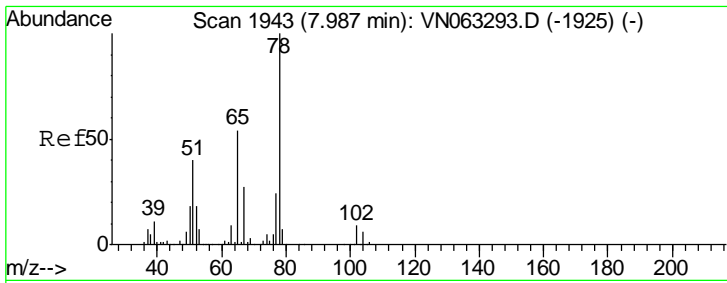
Tgt Ion	Resp	Lower	Upper
84	413		
49	80.7	111.1	166.7#
51	101.4	34.3	51.5#
86	59.6	52.9	79.3



#31
 Cyclohexane
 Concen: 1.265 ug/l
 RT: 7.62 min Scan# 1830
 Delta R.T. 0.01 min
 Lab File: VN063321.D
 Acq: 11 Sep 2020 17:54

Tgt Ion	Resp	Lower	Upper
56	10152		
69	147.6	25.1	37.7#
84	106.7	64.2	96.2#

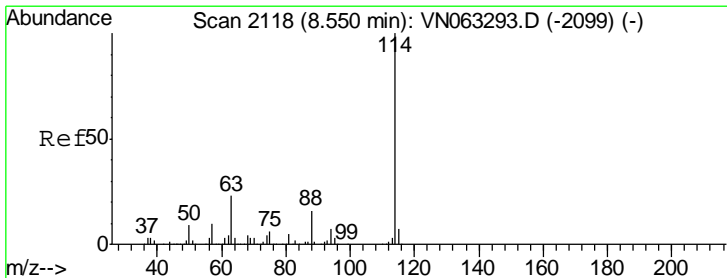
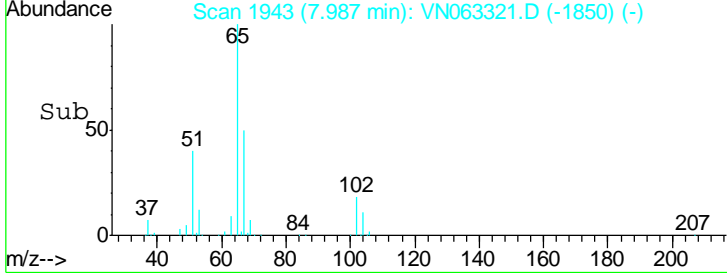
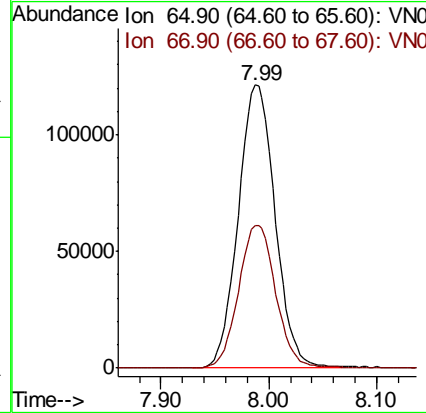
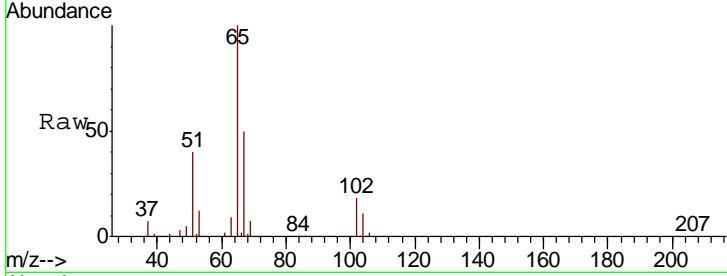




#33
 1,2-Dichloroethane-d4
 Concen: 50.507 ug/l
 RT: 7.99 min Scan# 1943
 Delta R.T. -0.00 min
 Lab File: VN063321.D
 Acq: 11 Sep 2020 17:54

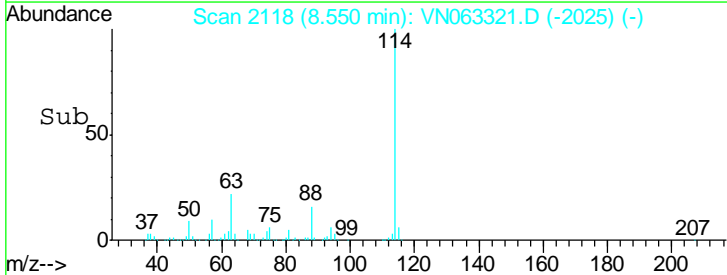
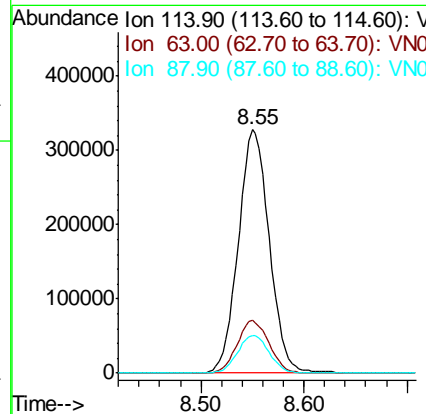
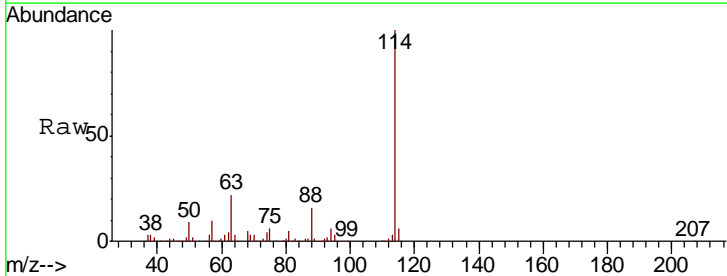
Instrument :
 MSVOA_N
 ClientSampled :

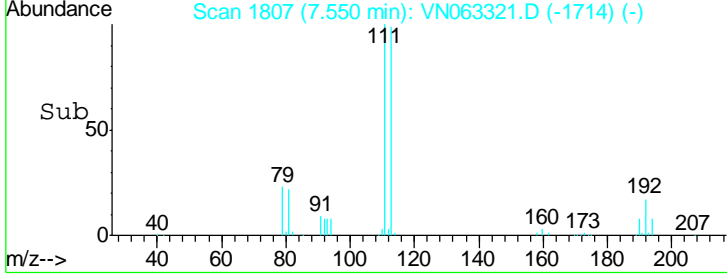
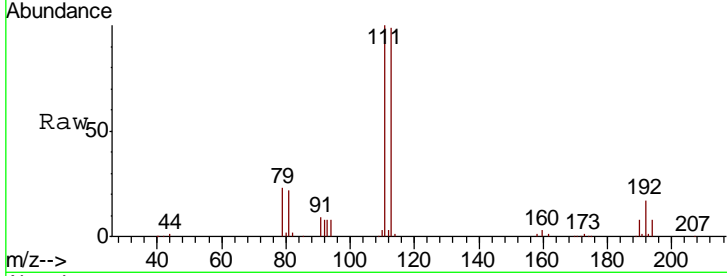
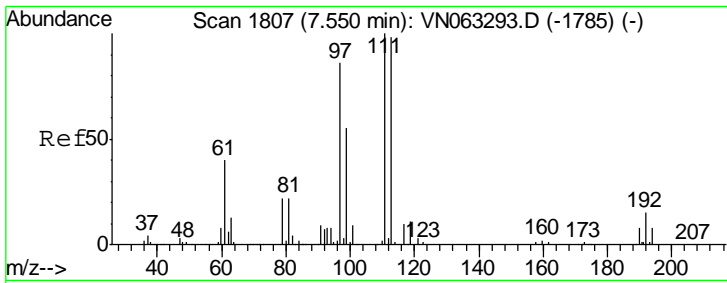
Tgt Ion	Resp	Lower	Upper
65	100		
67	51.0	0.0	104.6



#34
 1,4-Difluorobenzene
 Concen: 50.000 ug/l
 RT: 8.55 min Scan# 2118
 Delta R.T. -0.00 min
 Lab File: VN063321.D
 Acq: 11 Sep 2020 17:54

Tgt Ion	Resp	Lower	Upper
114	100		
63	21.6	0.0	46.0
88	15.6	0.0	32.8

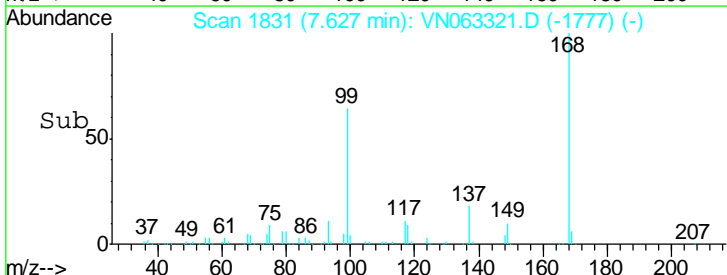
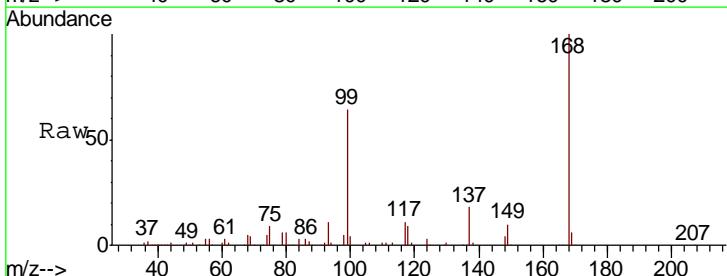
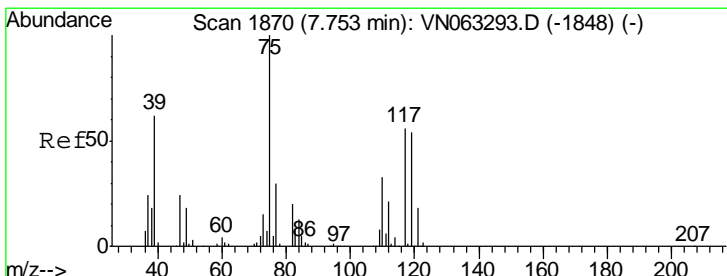
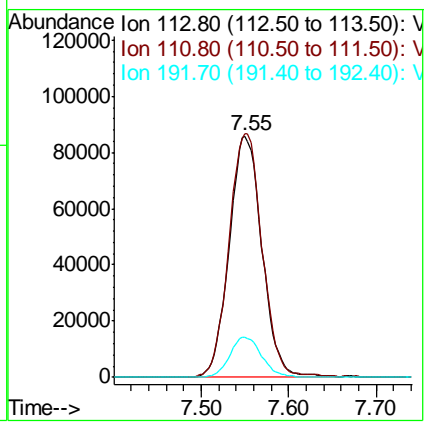




#35
 Dibromofluoromethane
 Concen: 50.394 ug/l
 RT: 7.55 min Scan# 1807
 Delta R.T. -0.00 min
 Lab File: VN063321.D
 Acq: 11 Sep 2020 17:54

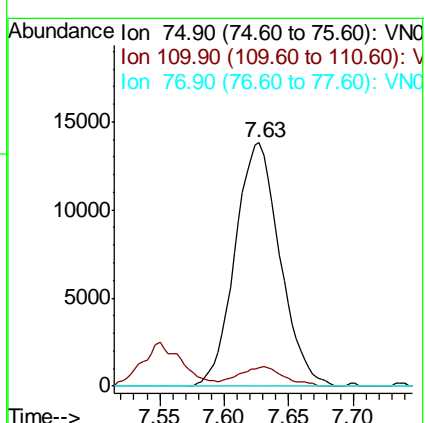
Instrument :
 MSVOA_N
 ClientSampled :

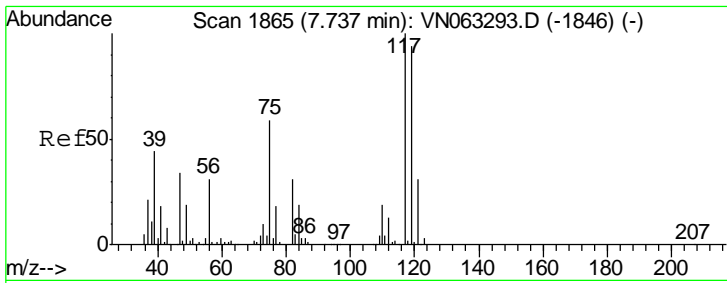
Tgt Ion	Resp	Lower	Upper
113	100		
111	101.5	82.2	123.2
192	16.2	12.9	19.3



#36
 1,1-Dichloropropene
 Concen: 4.746 ug/l
 RT: 7.63 min Scan# 1831
 Delta R.T. -0.13 min
 Lab File: VN063321.D
 Acq: 11 Sep 2020 17:54

Tgt Ion	Resp	Lower	Upper
75	100		
110	8.0	16.4	49.4#
77	0.0	24.8	37.2#

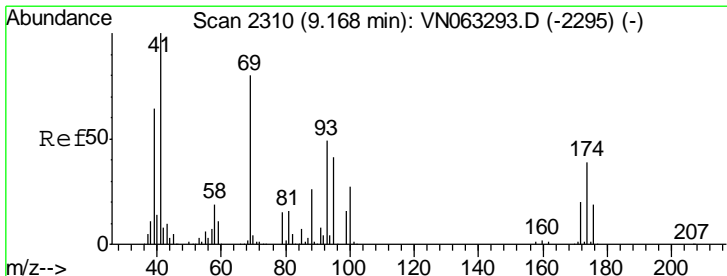
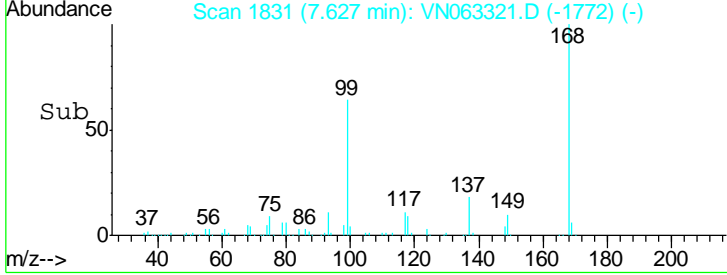
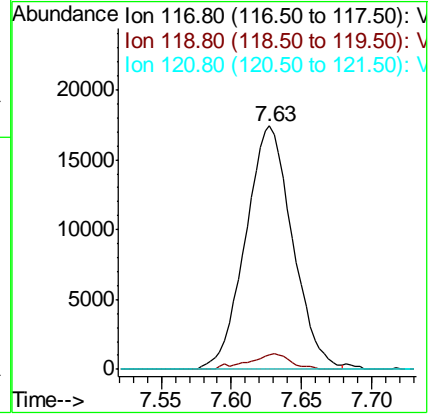
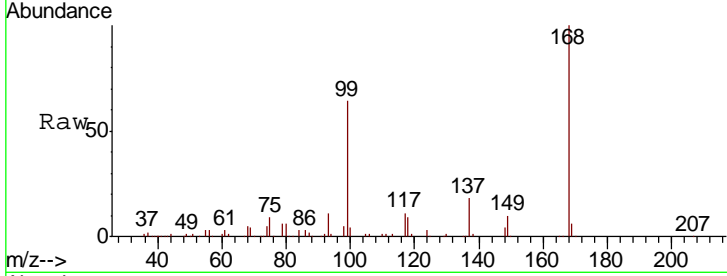




#38
 Carbon Tetrachloride
 Concen: 5.832 ug/l
 RT: 7.63 min Scan# 1831
 Delta R.T. -0.11 min
 Lab File: VN063321.D
 Acq: 11 Sep 2020 17:54

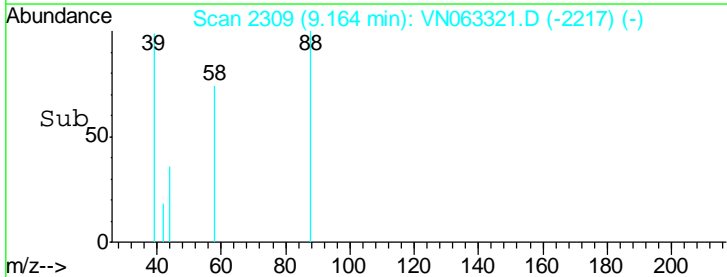
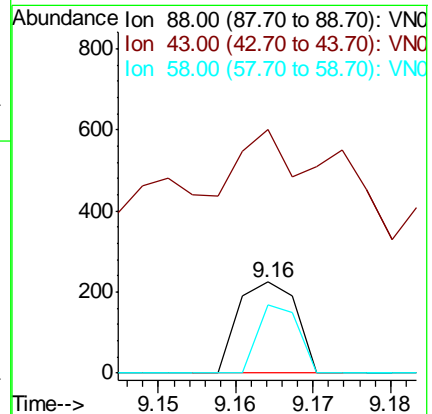
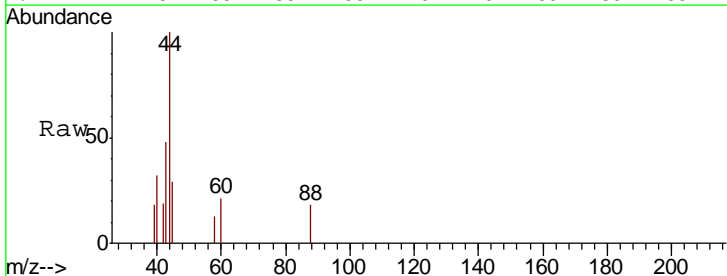
Instrument :
 MSVOA_N
 ClientSampled :

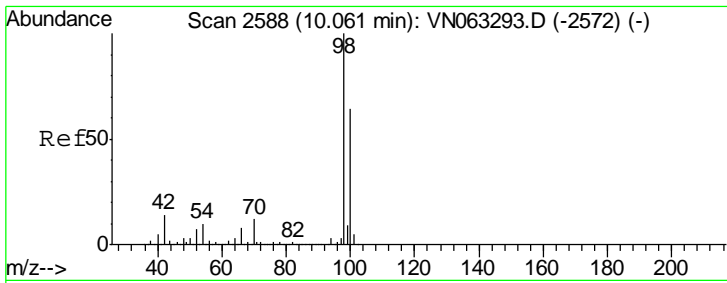
Tgt Ion	Resp	Lower	Upper
117	100		
119	5.9	75.3	112.9#
121	0.0	24.6	37.0#



#49
 1,4-Dioxane
 Concen: 1.348 ug/l
 RT: 9.16 min Scan# 2309
 Delta R.T. -0.00 min
 Lab File: VN063321.D
 Acq: 11 Sep 2020 17:54

Tgt Ion	Resp	Lower	Upper
88	100		
43	192.3	30.5	45.7#
58	52.1	58.9	88.3#

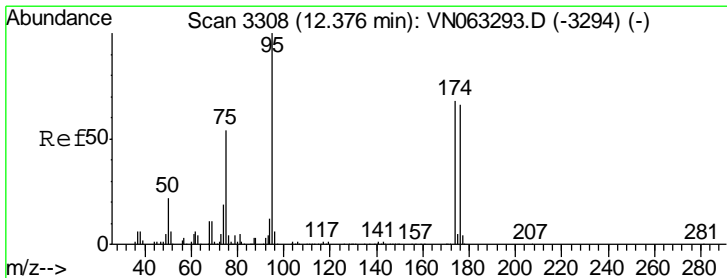
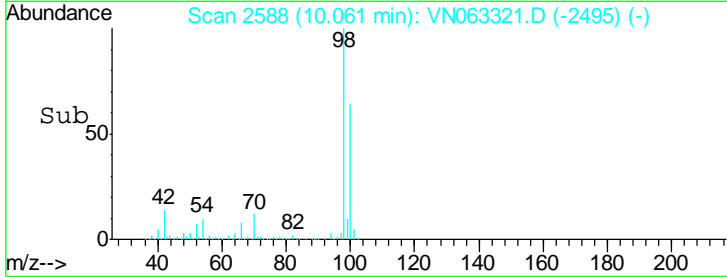
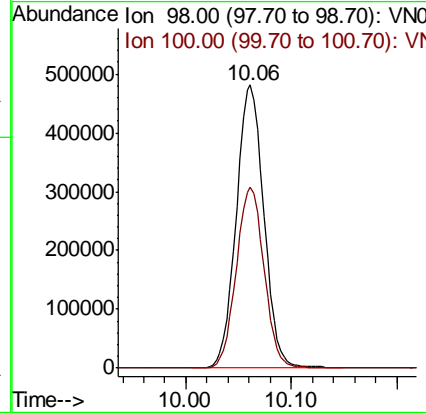
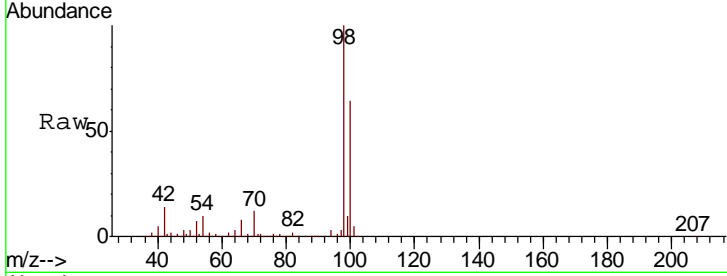




#50
 Toluene-d8
 Concen: 51.514 ug/l
 RT: 10.06 min Scan# 2588
 Delta R.T. -0.00 min
 Lab File: VN063321.D
 Acq: 11 Sep 2020 17:54

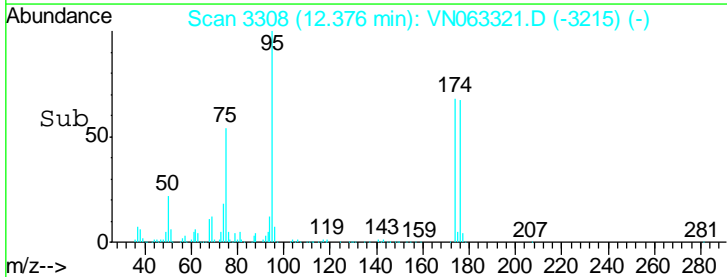
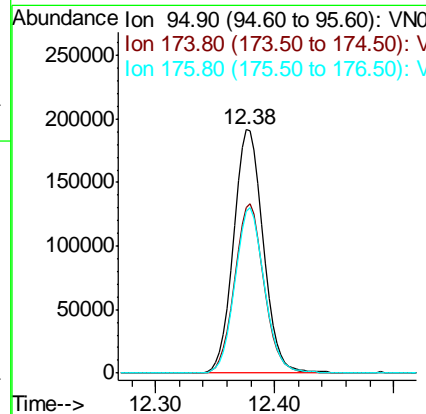
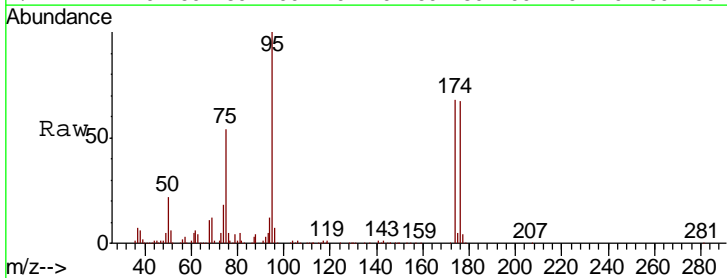
Instrument :
 MSVOA_N
 ClientSampled :

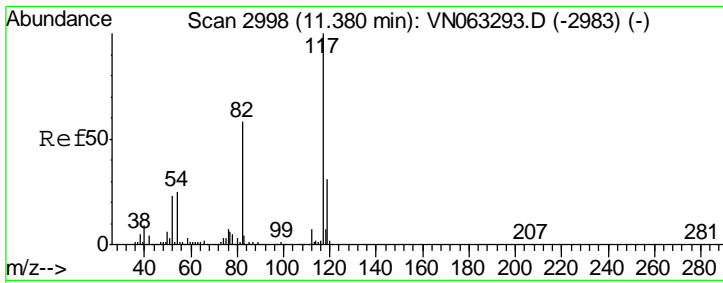
Tgt Ion	Resp	Lower	Upper
98	100		
100	64.5	50.7	76.1



#62
 4-Bromofluorobenzene
 Concen: 52.962 ug/l
 RT: 12.38 min Scan# 3308
 Delta R.T. -0.00 min
 Lab File: VN063321.D
 Acq: 11 Sep 2020 17:54

Tgt Ion	Resp	Lower	Upper
95	100		
174	68.8	0.0	136.6
176	67.4	0.0	132.8

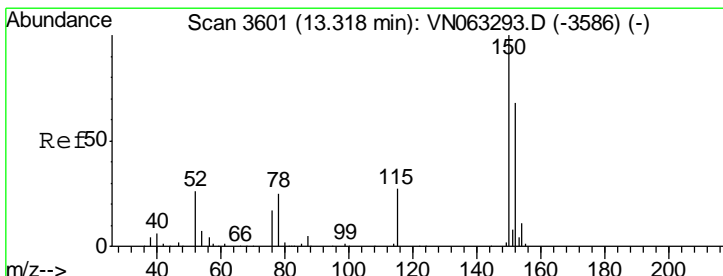
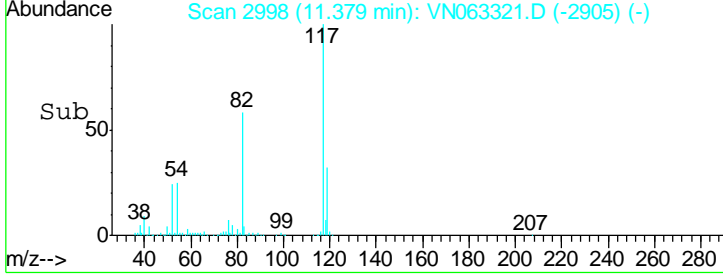
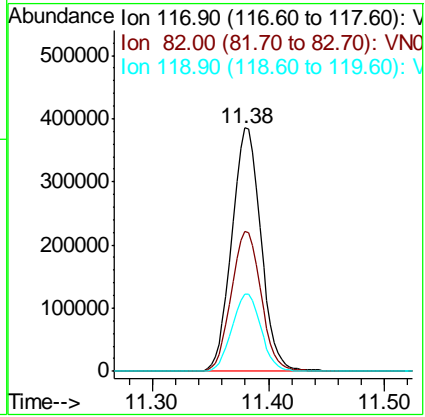
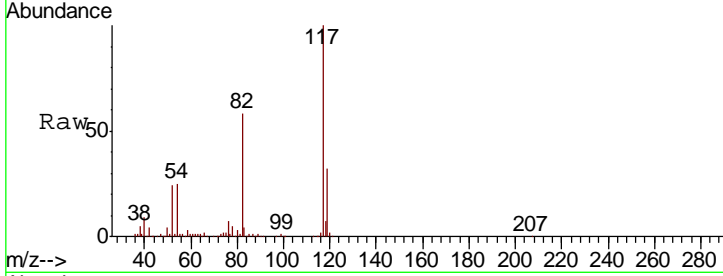




#63
 Chlorobenzene-d5
 Concen: 50.000 ug/l
 RT: 11.38 min Scan# 2998
 Delta R.T. -0.00 min
 Lab File: VN063321.D
 Acq: 11 Sep 2020 17:54

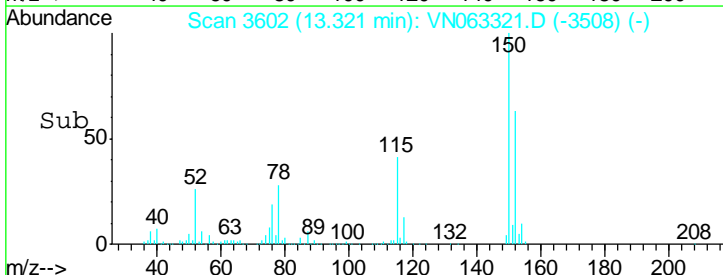
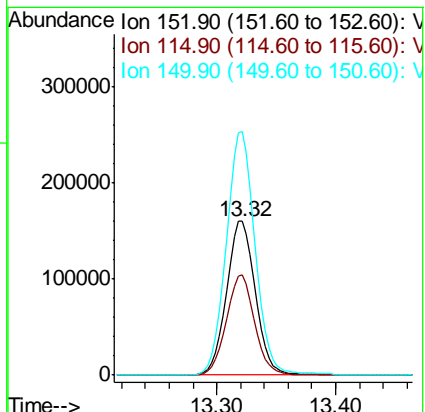
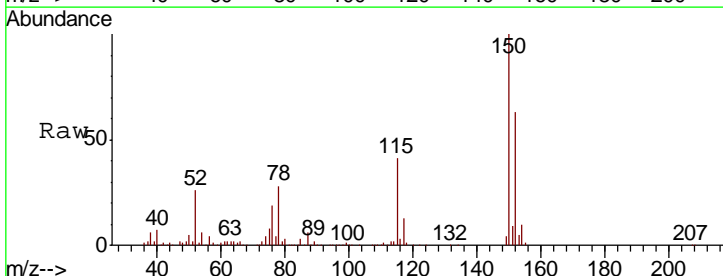
Instrument :
 MSVOA_N
 ClientSampled :

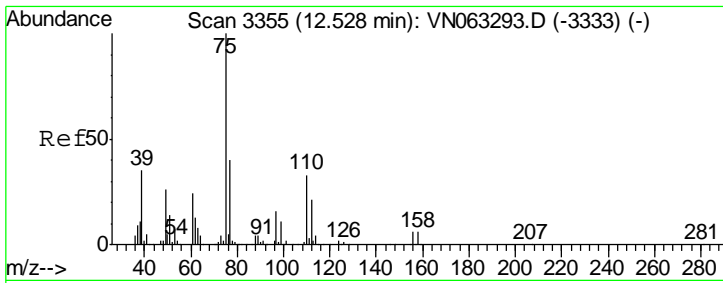
Tgt Ion	Resp	Lower	Upper
117	668825		
82	57.5	46.4	69.6
119	31.6	24.8	37.2



#72
 1,4-Dichlorobenzene-d4
 Concen: 50.000 ug/l
 RT: 13.32 min Scan# 3602
 Delta R.T. 0.00 min
 Lab File: VN063321.D
 Acq: 11 Sep 2020 17:54

Tgt Ion	Resp	Lower	Upper
152	269301		
115	63.3	31.5	94.5
150	158.1	0.0	344.0

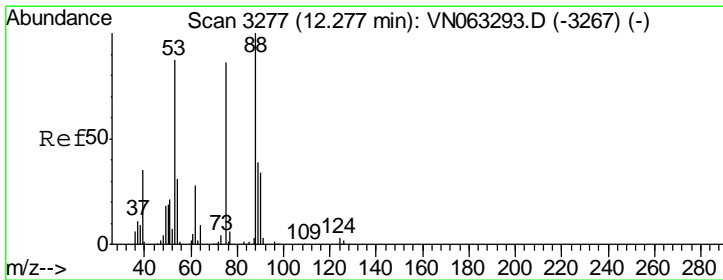
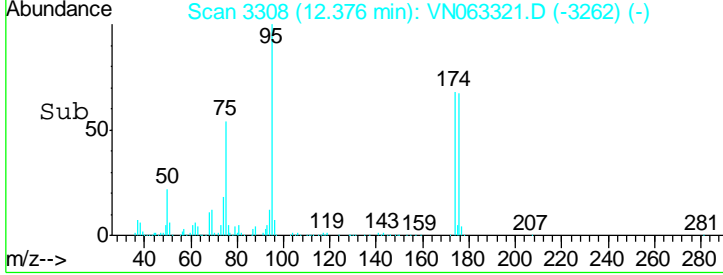
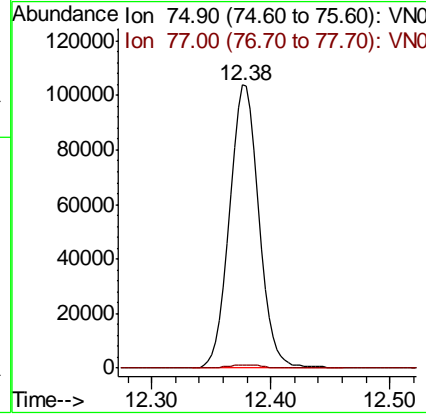
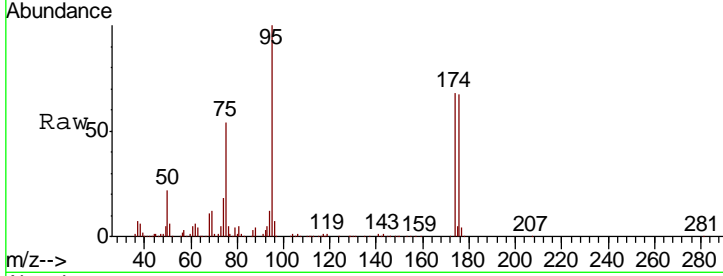




#76
 1,2,3-Trichloropropane
 Concen: 29.924 ug/l
 RT: 12.38 min Scan# 3308
 Delta R.T. -0.15 min
 Lab File: VN063321.D
 Acq: 11 Sep 2020 17:54

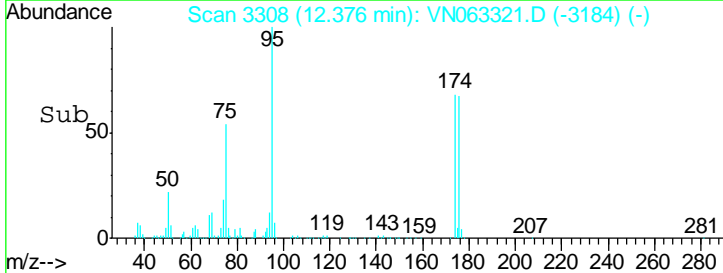
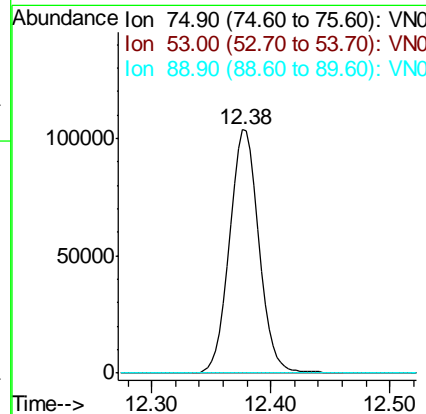
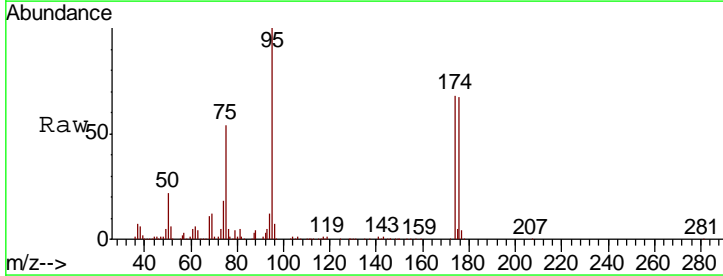
Instrument :
 MSVOA_N
 ClientSampled :

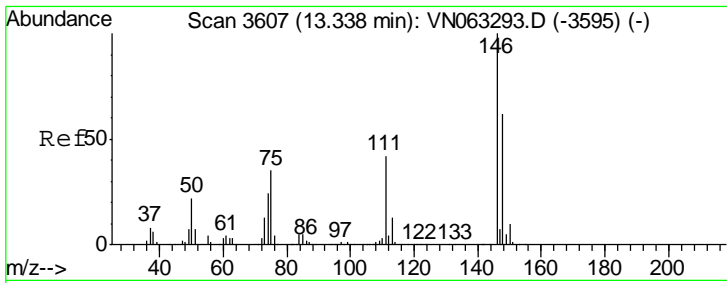
Tgt Ion	Resp	Lower	Upper
75	100		
77	1.3	0.0	0.0#



#81
 trans-1,4-Dichloro-2-butene
 Concen: 80.399 ug/l
 RT: 12.38 min Scan# 3308
 Delta R.T. 0.10 min
 Lab File: VN063321.D
 Acq: 11 Sep 2020 17:54

Tgt Ion	Resp	Lower	Upper
75	100		
53	0.0	81.8	122.8#
89	0.0	36.7	55.1#

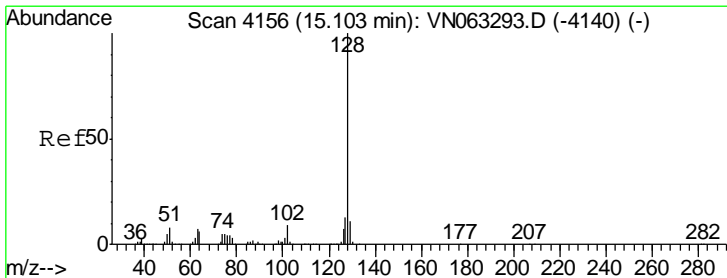
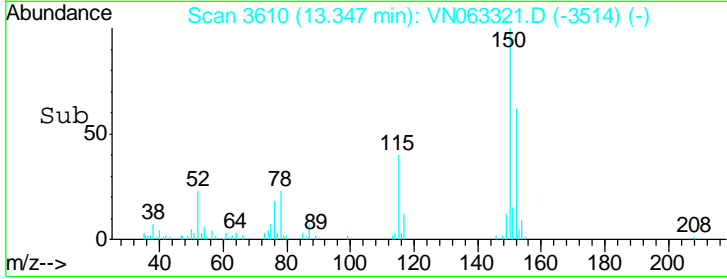
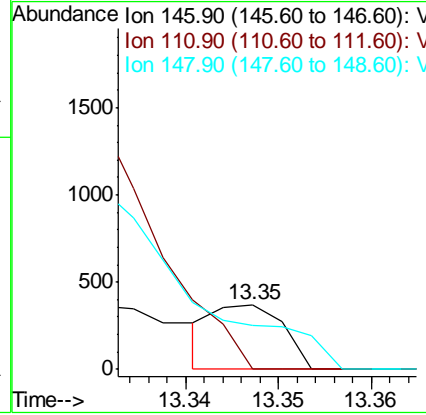
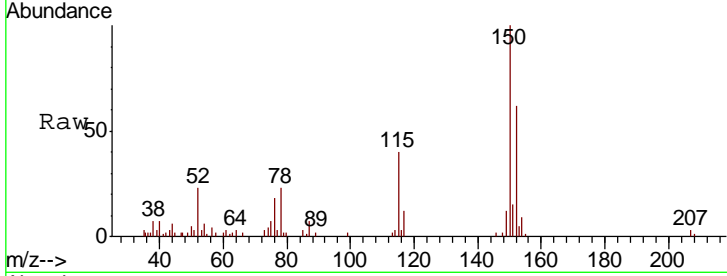




#88
 1,4-Dichlorobenzene
 Concen: Below Cal
 RT: 13.35 min Scan# 3610
 Delta R.T. 0.01 min
 Lab File: VN063321.D
 Acq: 11 Sep 2020 17:54

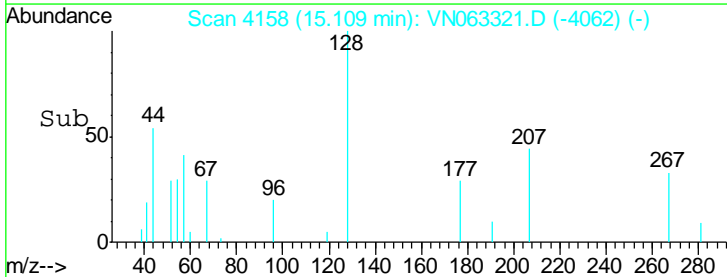
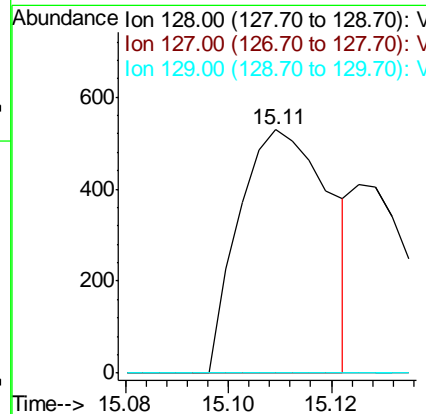
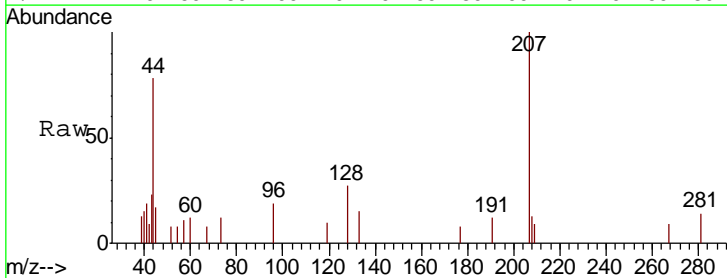
Instrument : MSVOA_N
 ClientSampled :

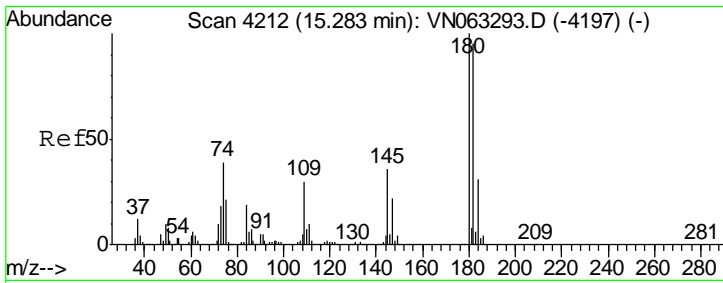
Tgt Ion	Resp	Lower	Upper
146	100		
111	0.0	21.3	64.0#
148	0.0	31.5	94.5#



#95
 Naphthalene
 Concen: Below Cal
 RT: 15.11 min Scan# 4158
 Delta R.T. 0.01 min
 Lab File: VN063321.D
 Acq: 11 Sep 2020 17:54

Tgt Ion	Resp	Lower	Upper
128	100		
127	0.0	10.3	15.5#
129	0.0	8.6	12.8#





#96
 1,2,3-Trichlorobenzene
 Concen: Below Cal
 RT: 15.31 min Scan# 4220
 Delta R.T. 0.03 min
 Lab File: VN063321.D
 Acq: 11 Sep 2020 17:54

Instrument :
 MSVOA_N
 ClientSampled :

Tot Ion	Ratio	Lower	Upper
180	100		
182	0.0	47.4	142.3#
145	0.0	17.2	51.6#

