

Data Path : Z:\voasrv\HPCHEM1\MSVOA_N\Data\VN091123\
 Data File : VN079212.D
 Acq On : 11 Sep 2023 12:16
 Operator : JC\MD
 Sample : 04376-01
 Misc : 5.0mL/MSVOA_N/WATER
 ALS Vial : 6 Sample Multiplier: 1

Instrument :
 MSVOA_N
 ClientSampleId :
 001-WILLETTS-PT-BLVD(SEP)

Integration Parameters: RTEINT3.P
 Integrator: RTE
 Smoothing : OFF Filtering: 5
 Sampling : 1 Min Area: 0 % of largest Peak
 Start Thrs: 0.2 Max Peaks: 100
 Stop Thrs : 0 Peak Location: TOP

If leading or trailing edge < 100 prefer < Baseline drop else tangent >
 Peak separation: 5

Method : Z:\voasrv\HPCHEM1\MSVOA_N\methods\624N090723W.M
 Title : METHOD 624 VOLATILE ORGANIC ANALYSIS

Signal : TIC: VN079212.D\data.ms

peak #	R.T. min	first scan	max scan	last scan	PK TY	peak height	corr. area	corr. % max.	% of total
1	2.289	52	57	64	rBV	9291	21090	3.57%	1.002%
2	2.818	140	147	148	rBV2	3980	6363	1.08%	0.302%
3	4.436	411	422	436	rBV	48258	141697	23.96%	6.734%
4	4.718	460	470	486	rBV2	18473	59292	10.03%	2.818%
5	5.530	597	608	619	rBV	8853	28255	4.78%	1.343%
6	7.494	933	942	952	rVB3	4090	9782	1.65%	0.465%
7	7.818	985	997	1009	rVB2	55249	139330	23.56%	6.622%
8	8.582	1118	1127	1138	rBV	56720	126425	21.38%	6.008%
9	9.106	1208	1216	1226	rBV	119761	239562	40.51%	11.385%
10	10.571	1458	1465	1470	rBV	171679	311836	52.73%	14.820%
11	10.635	1470	1476	1490	rVB	318015	591424	100.00%	28.108%
12	11.870	1679	1686	1696	rVB	151370	267110	45.16%	12.694%
13	12.853	1846	1853	1865	rVB	82705	146313	24.74%	6.954%
14	13.582	1970	1977	1983	rVB5	3380	7100	1.20%	0.337%
15	13.729	1996	2002	2008	rBV5	4874	8567	1.45%	0.407%

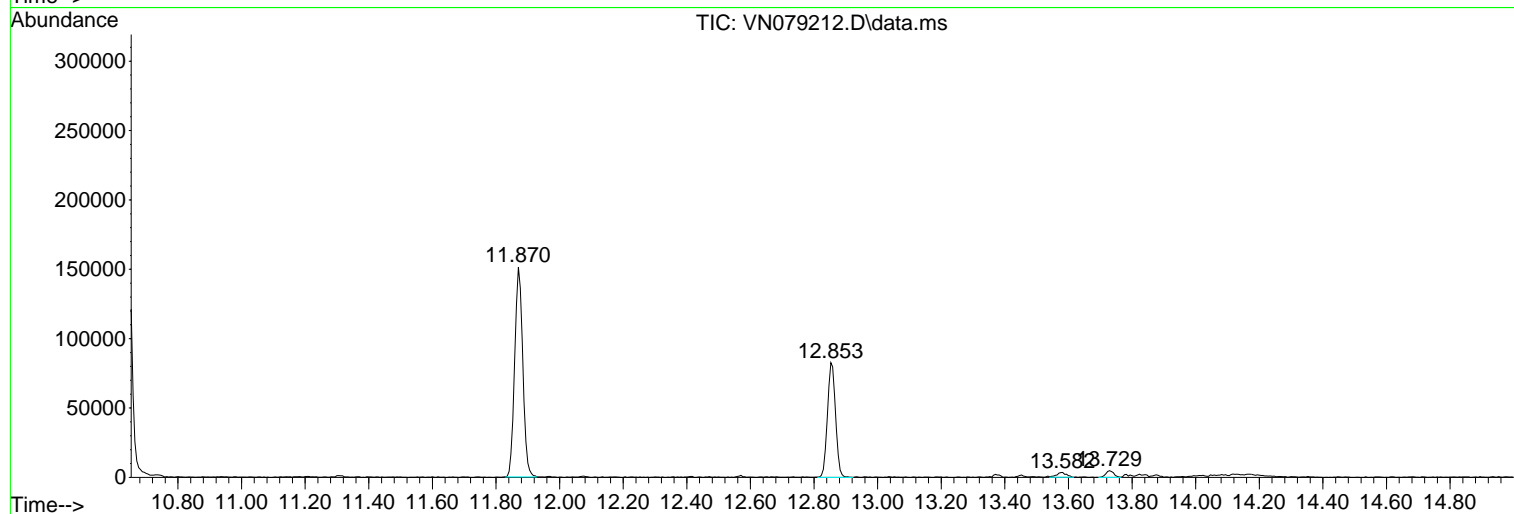
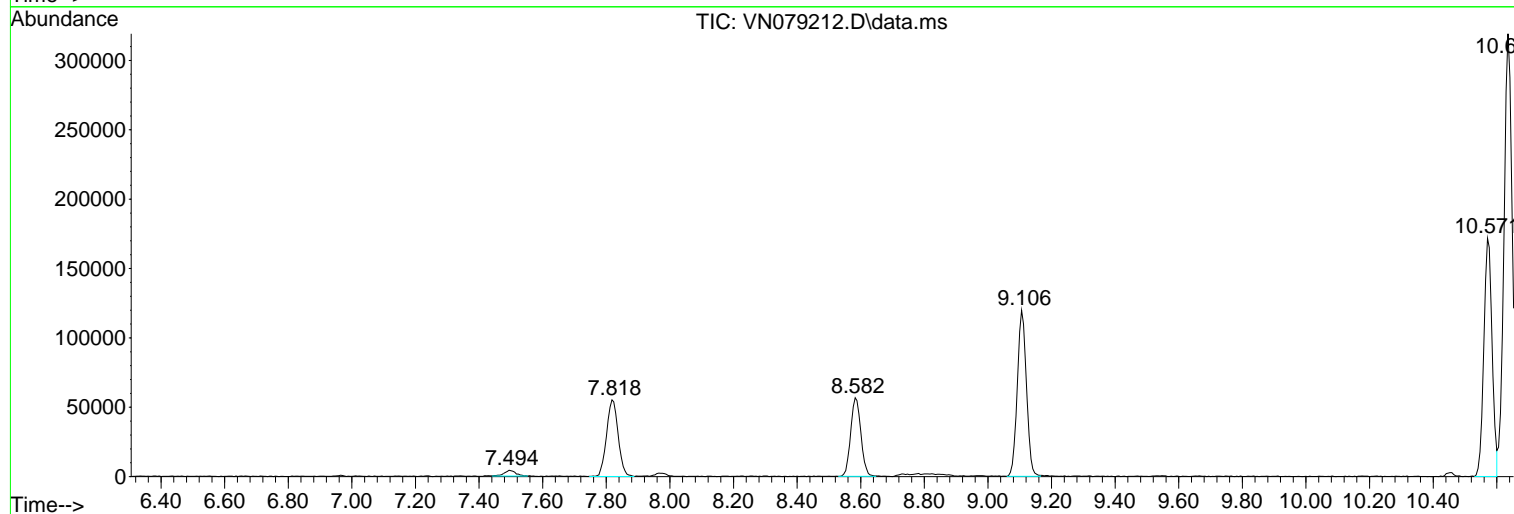
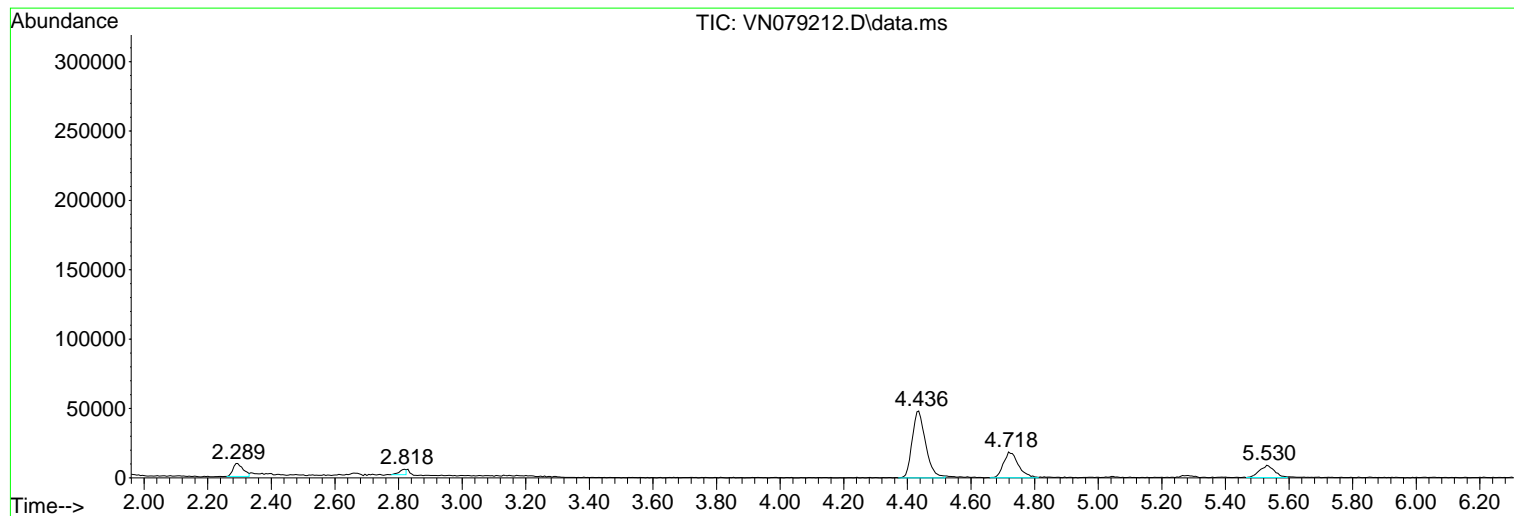
Sum of corrected areas: 2104146

Data Path : Z:\voasrv\HPCHEM1\MSVOA_N\Data\VN091123\
Data File : VN079212.D
Acq On : 11 Sep 2023 12:16
Operator : JC\MD
Sample : 04376-01
Misc : 5.0mL/MSVOA_N/WATER
ALS Vial : 6 Sample Multiplier: 1

Instrument :
MSVOA_N
ClientSampleId :
001-WILLETS-PT-BLVD(SEP)

Quant Method : Z:\voasrv\HPCHEM1\MSVOA_N\methods\624N090723W.M
Quant Title : METHOD 624 VOLATILE ORGANIC ANALYSIS

TIC Library : C:\Database\NIST20.L
TIC Integration Parameters: LSCINT.P



Data Path : Z:\voasrv\HPCHEM1\MSVOA_N\Data\VN091123\
 Data File : VN079212.D
 Acq On : 11 Sep 2023 12:16
 Operator : JC\MD
 Sample : 04376-01
 Misc : 5.0mL/MSVOA_N/WATER
 ALS Vial : 6 Sample Multiplier: 1

Instrument :
 MSVOA_N
 ClientSampleId :
 001-WILLETS-PT-BLVD(SEP)

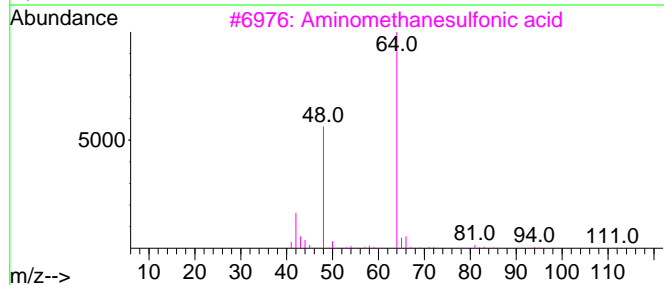
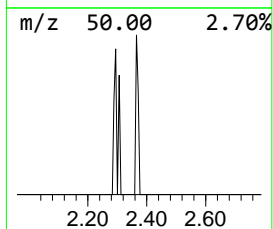
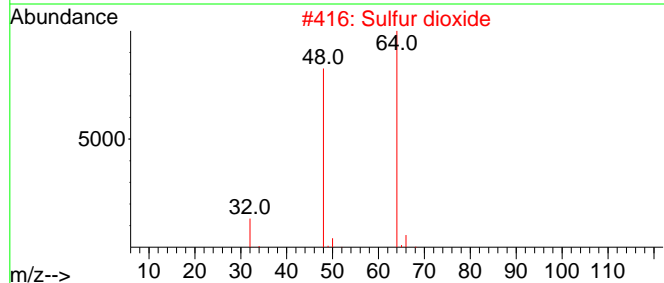
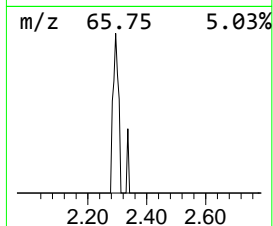
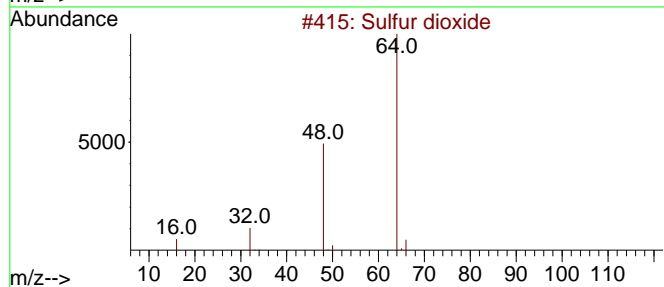
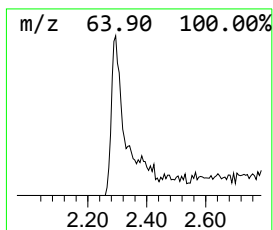
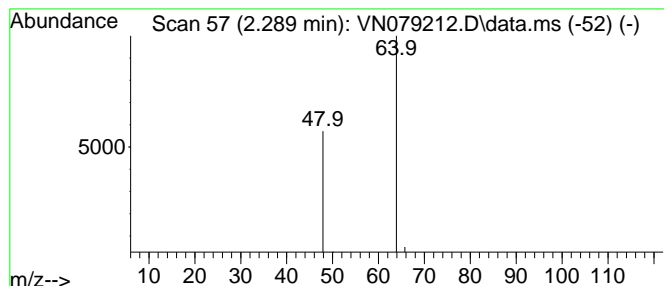
Quant Method : Z:\voasrv\HPCHEM1\MSVOA_N\methods\624N090723W.M
 Quant Title : METHOD 624 VOLATILE ORGANIC ANALYSIS

TIC Library : C:\Database\NIST20.L
 TIC Integration Parameters: LSCINT.P

 Peak Number 1 Sulfur dioxide Concentration Rank 2

R.T.	EstConc	Area	Relative to ISTD	R.T.
2.289	4.54 ug/l	21090	Bromochloromethane	7.818

Hit#	of	5	Tentative ID	MW	MolForm	CAS#	Qual
1			Sulfur dioxide	64	O2S	007446-09-5	74
2			Sulfur dioxide	64	O2S	007446-09-5	74
3			Aminomethanesulfonic acid	111	CH5NO3S	013881-91-9	9
4			Aminomethanesulfonic acid	111	CH5NO3S	013881-91-9	9
5			L-Alanine, 3-sulfo-	169	C3H7NO5S	000498-40-8	9



Data Path : Z:\voasrv\HPCHEM1\MSVOA_N\Data\VN091123\
Data File : VN079212.D
Acq On : 11 Sep 2023 12:16
Operator : JC\MD
Sample : 04376-01
Misc : 5.0mL/MSVOA_N/WATER
ALS Vial : 6 Sample Multiplier: 1

Instrument :
MSVOA_N
ClientSampleId :
001-WILLETTS-PT-BLVD(SEP)

Quant Method : Z:\voasrv\HPCHEM1\MSVOA_N\methods\624N090723W.M
Quant Title : METHOD 624 VOLATILE ORGANIC ANALYSIS

TIC Library : C:\Database\NIST20.L
TIC Integration Parameters: LSCINT.P

TIC Top Hit name	RT	EstConc	Units	Response	--Internal Standard--			
					#	RT	Resp	Conc
Sulfur dioxide	2.289	4.5	ug/l	21090	1	7.818	139330	30.0