

Data Path : Z:\voasrv\HPCHEM1\MSVOA_N\Data\VN091222\
 Data File : VN074433.D
 Acq On : 13 Sep 2022 02:14
 Operator : JC\MD
 Sample : N4506-16
 Misc : 5.0mL/MSVOA_N/WATER
 ALS Vial : 35 Sample Multiplier: 1

Instrument :
 MSVOA_N
 ClientSampleId :
 CO-1

Quant Time: Sep 13 06:56:37 2022
 Quant Method : Z:\voasrv\HPCHEM1\MSVOA_N\methods\82N090922W.M
 Quant Title : SW846 8260
 QLast Update : Sat Sep 10 06:10:29 2022
 Response via : Initial Calibration

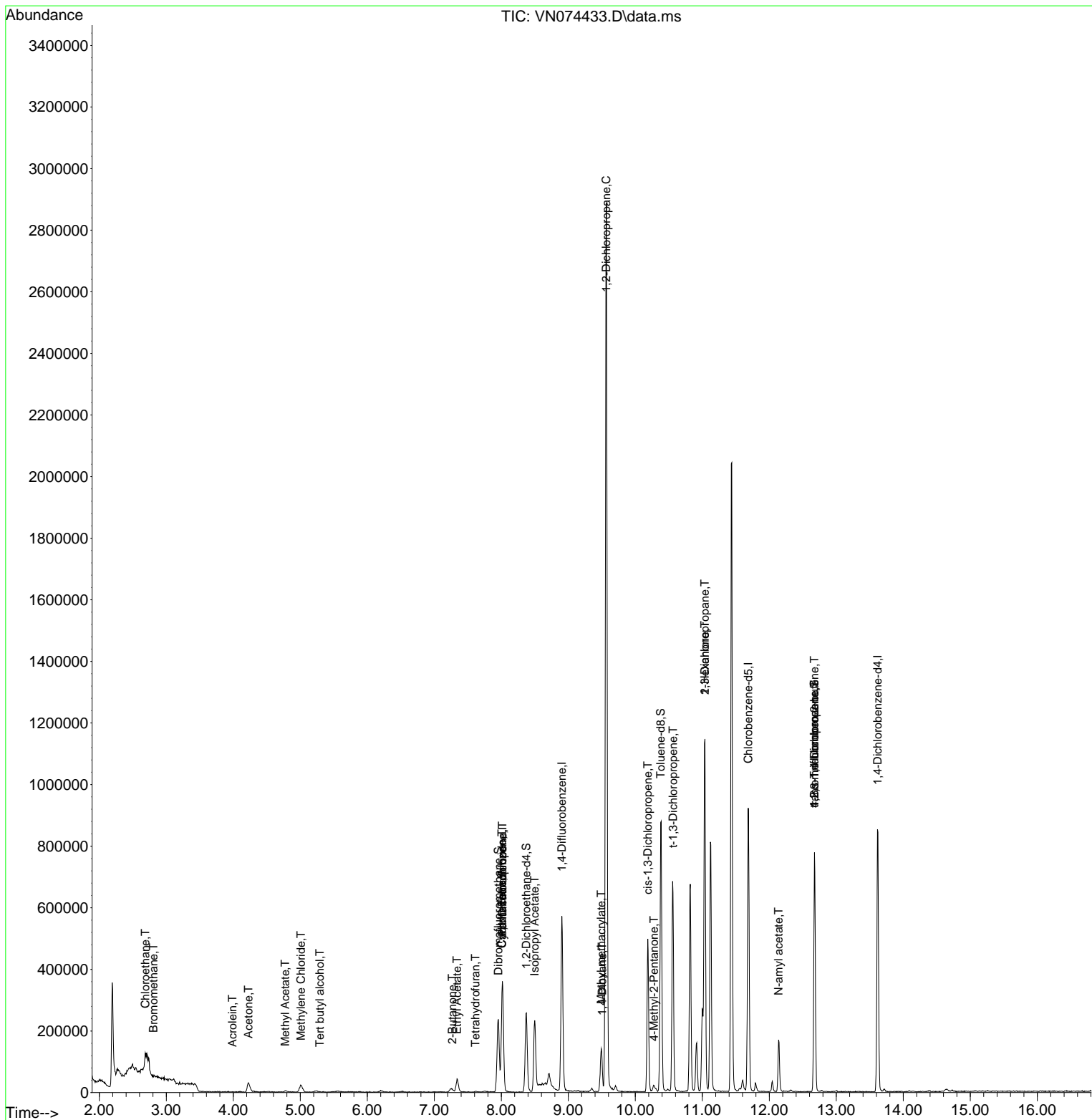
Compound	R.T.	QIon	Response	Conc	Units	Dev(Min)
Internal Standards						
1) Pentafluorobenzene	8.016	168	249335	50.000	ug/l	0.00
34) 1,4-Difluorobenzene	8.904	114	448533	50.000	ug/l	0.00
63) Chlorobenzene-d5	11.686	117	468269	50.000	ug/l	0.00
72) 1,4-Dichlorobenzene-d4	13.616	152	206246	50.000	ug/l	0.00
System Monitoring Compounds						
33) 1,2-Dichloroethane-d4	8.375	65	194647	45.121	ug/l	0.00
Spiked Amount	50.000	Range	74 - 125	Recovery	=	90.240%
35) Dibromofluoromethane	7.957	113	159354	52.626	ug/l	0.00
Spiked Amount	50.000	Range	75 - 124	Recovery	=	105.260%
50) Toluene-d8	10.380	98	554201	46.972	ug/l	0.00
Spiked Amount	50.000	Range	86 - 113	Recovery	=	93.940%
62) 4-Bromofluorobenzene	12.674	95	219766	51.303	ug/l	0.00
Spiked Amount	50.000	Range	83 - 123	Recovery	=	102.600%
Target Compounds						
					Qvalue	
3) Chloromethane	2.269	50	4172	Below Cal	#	65
5) Bromomethane	2.810	94	864	0.229	ug/l #	23
6) Chloroethane	2.687	64	30793	5.351	ug/l #	51
11) Tert butyl alcohol	5.293	59	595	0.527	ug/l #	71
13) Acrolein	3.987	56	156	0.208	ug/l #	66
16) Acetone	4.228	43	53834	23.115	ug/l	97
18) Methyl Acetate	4.775	43	3891	0.567	ug/l #	89
20) Methylene Chloride	5.010	84	15412	3.099	ug/l #	90
25) 2-Butanone	7.269	43	10669	2.729	ug/l #	82
28) Bromochloromethane	7.716	49	63	Below Cal	#	20
29) Tetrahydrofuran	7.616	42	2325	0.900	ug/l #	72
31) Cyclohexane	8.010	56	8006	1.167	ug/l #	57
36) 1,1-Dichloropropene	8.016	75	25572	5.126	ug/l #	51
37) Ethyl Acetate	7.339	43	64062	8.853	ug/l	99
38) Carbon Tetrachloride	8.010	117	27194	5.280	ug/l #	15
43) Isopropyl Acetate	8.498	43	280966	23.742	ug/l #	92
45) 1,2-Dichloropropane	9.569	63	3470	0.856	ug/l #	44
48) Methyl methacrylate	9.492	41	10497	2.013	ug/l #	44
49) 1,4-Dioxane	9.504	88	251	2.284	ug/l #	25
51) 4-Methyl-2-Pentanone	10.280	43	21978	2.840	ug/l #	79
53) t-1,3-Dichloropropene	10.563	75	1913	0.313	ug/l #	28
54) cis-1,3-Dichloropropene	10.186	75	78365	12.042	ug/l #	74
57) 1,3-Dichloropropane	11.039	76	11133	1.636	ug/l #	43
59) 2-Hexanone	11.039	43	163133	27.315	ug/l #	54
74) N-amyl acetate	12.139	43	56000	4.191	ug/l #	55
76) 1,2,3-Trichloropropane	12.674	75	140955	26.143	ug/l #	1
81) trans-1,4-Dichloro-2-b...	12.674	75	140955	58.273	ug/l #	9
92) 1,2-Dibromo-3-Chloropr...	14.545	75	56	Below Cal	#	8

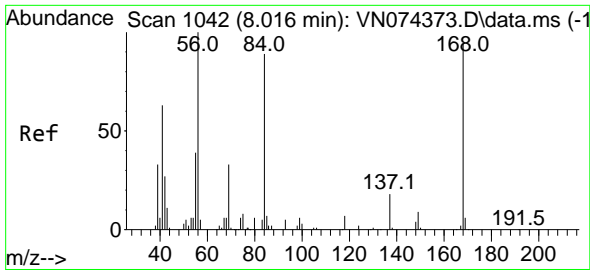
(#) = qualifier out of range (m) = manual integration (+) = signals summed

Data Path : Z:\voasrv\HPCHEM1\MSVOA_N\Data\VN091222\
 Data File : VN074433.D
 Acq On : 13 Sep 2022 02:14
 Operator : JC\MD
 Sample : N4506-16
 Misc : 5.0mL/MSVOA_N/WATER
 ALS Vial : 35 Sample Multiplier: 1

Instrument :
 MSVOA_N
 ClientSampleId :
 CO-1

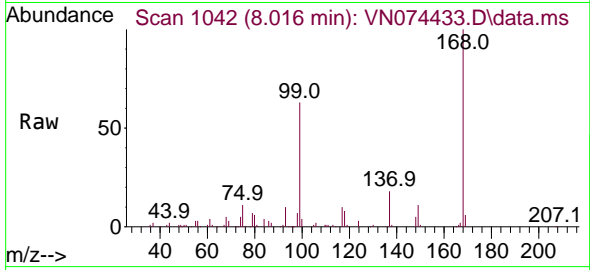
Quant Time: Sep 13 06:56:37 2022
 Quant Method : Z:\voasrv\HPCHEM1\MSVOA_N\methods\82N090922W.M
 Quant Title : SW846 8260
 QLast Update : Sat Sep 10 06:10:29 2022
 Response via : Initial Calibration



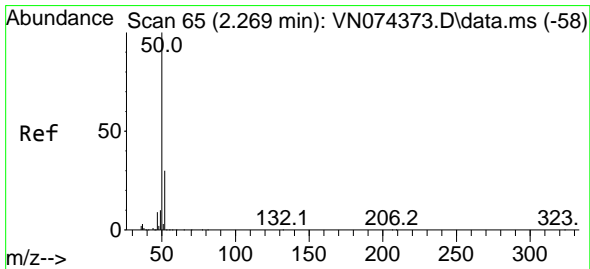
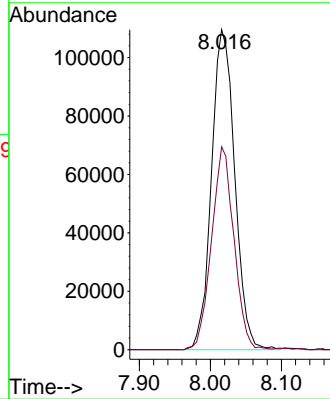
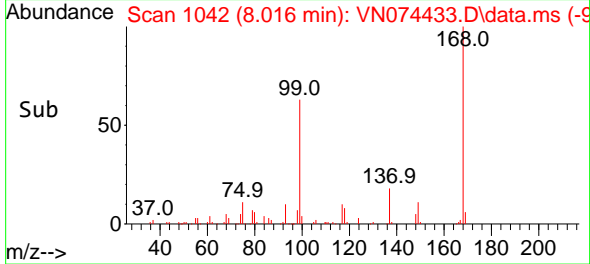


#1
 Pentafluorobenzene
 Concen: 50.000 ug/l
 RT: 8.016 min Scan# 10
 Delta R.T. -0.000 min
 Lab File: VN074433.D
 Acq: 13 Sep 2022 02:14

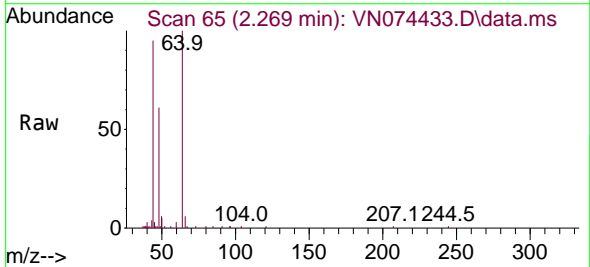
Instrument :
 MSVOA_N
 ClientSampleId :
 CO-1



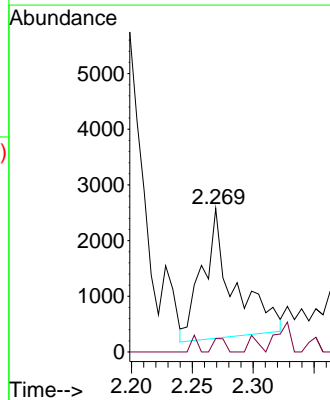
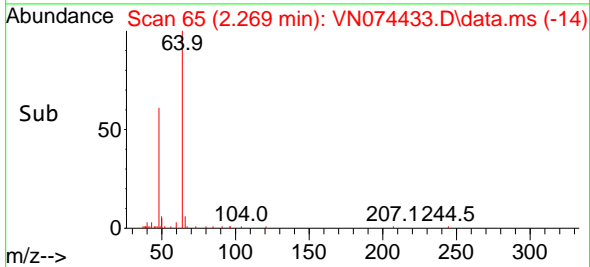
Tgt Ion:168 Resp: 249335
 Ion Ratio Lower Upper
 168 100
 99 63.4 52.8 79.2

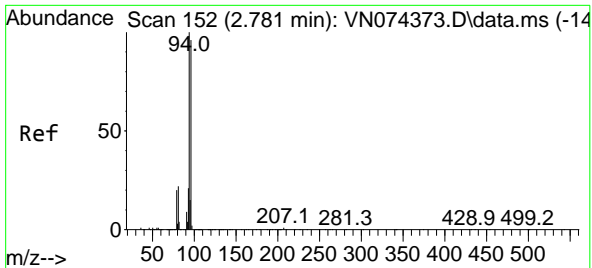


#3
 Chloromethane
 Concen: Below Cal
 RT: 2.269 min Scan# 65
 Delta R.T. 0.000 min
 Lab File: VN074433.D
 Acq: 13 Sep 2022 02:14



Tgt Ion: 50 Resp: 4172
 Ion Ratio Lower Upper
 50 100
 52 11.2 24.1 36.1#

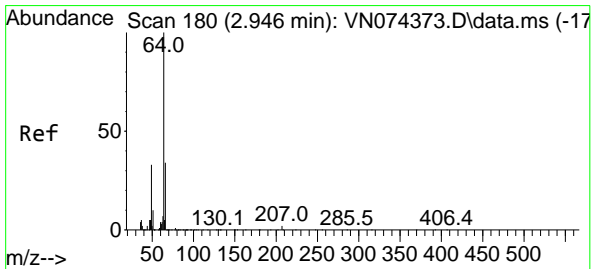
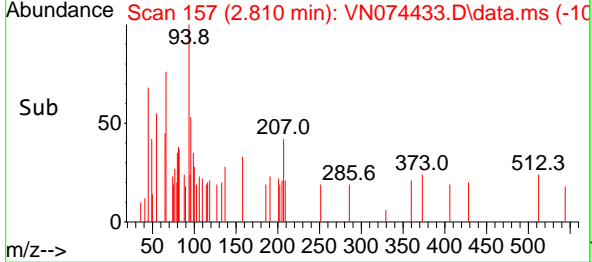
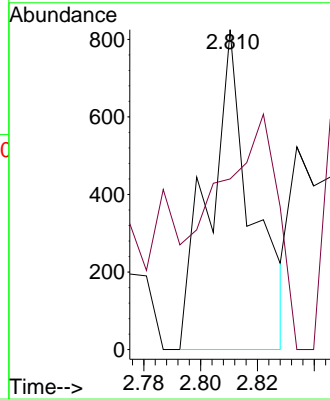
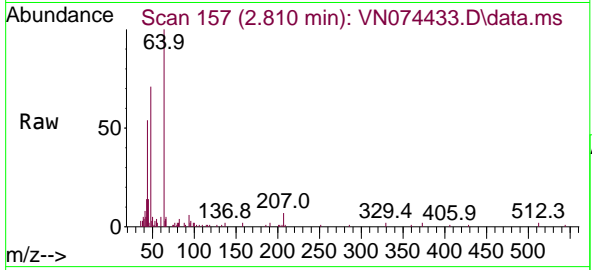




#5
 Bromomethane
 Concen: 0.229 ug/l
 RT: 2.810 min Scan# 11
 Delta R.T. 0.029 min
 Lab File: VN074433.D
 Acq: 13 Sep 2022 02:14

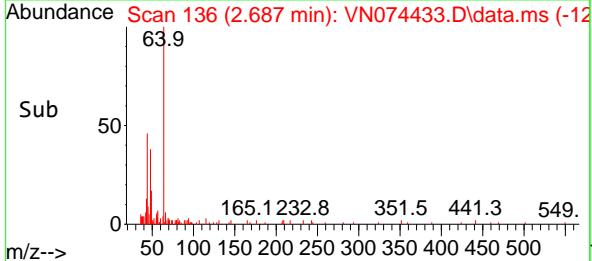
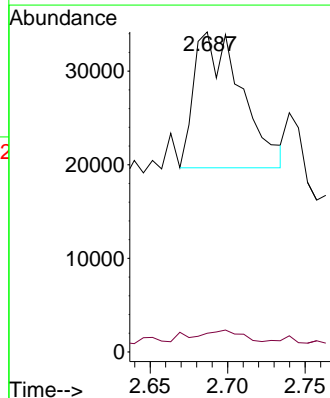
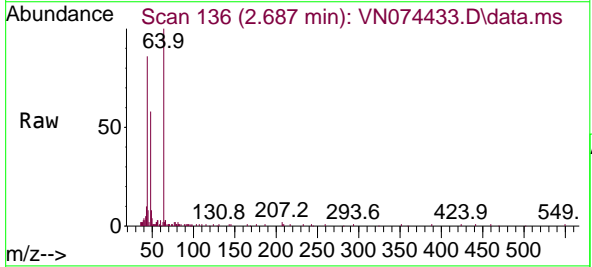
Instrument :
 MSVOA_N
 ClientSampleId :
 CO-1

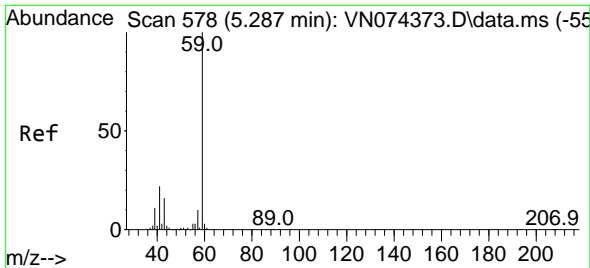
Tgt Ion: 94 Resp: 864
 Ion Ratio Lower Upper
 94 100
 96 20.6 76.7 115.1#



#6
 Chloroethane
 Concen: 5.351 ug/l
 RT: 2.687 min Scan# 136
 Delta R.T. -0.259 min
 Lab File: VN074433.D
 Acq: 13 Sep 2022 02:14

Tgt Ion: 64 Resp: 30793
 Ion Ratio Lower Upper
 64 100
 66 5.5 26.5 39.7#

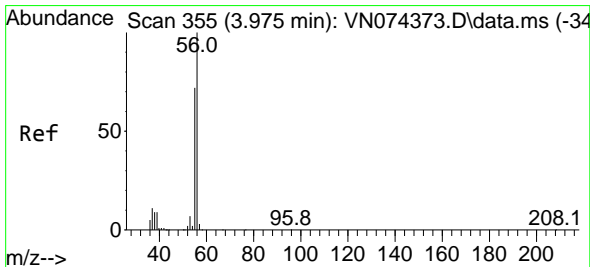
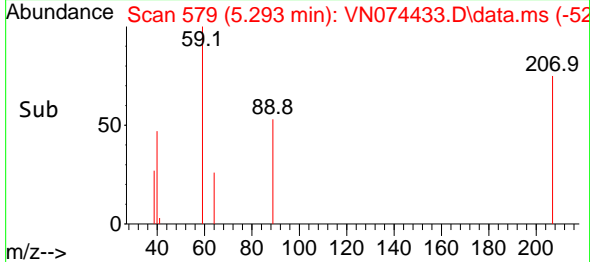
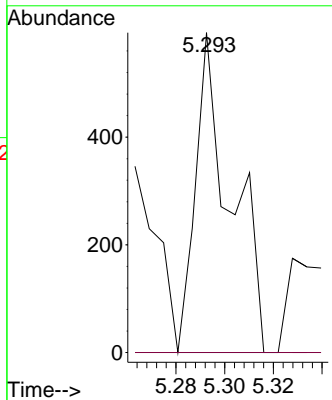
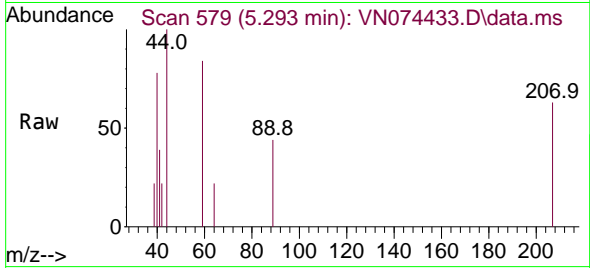




#11
 Tert butyl alcohol
 Concen: 0.527 ug/l
 RT: 5.293 min Scan# 51
 Delta R.T. 0.006 min
 Lab File: VN074433.D
 Acq: 13 Sep 2022 02:14

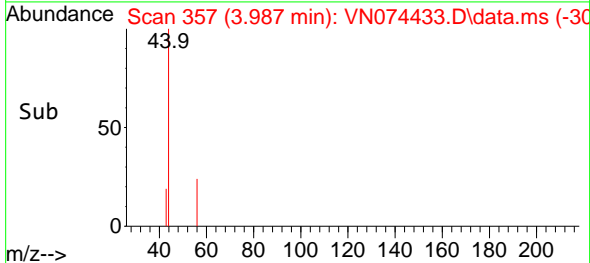
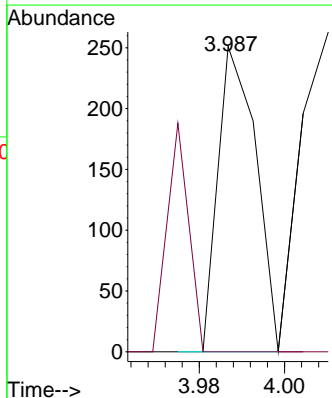
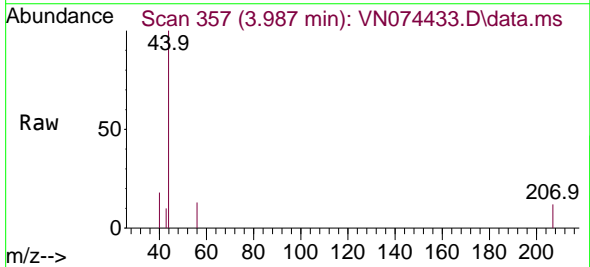
Instrument :
 MSVOA_N
 ClientSampleId :
 CO-1

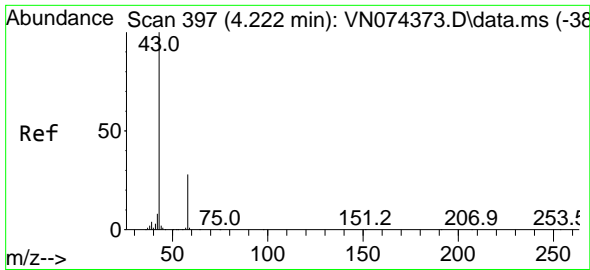
Tgt Ion: 59 Resp: 595
 Ion Ratio Lower Upper
 59 100
 57 0.0 8.8 13.2#



#13
 Acrolein
 Concen: 0.208 ug/l
 RT: 3.987 min Scan# 357
 Delta R.T. 0.012 min
 Lab File: VN074433.D
 Acq: 13 Sep 2022 02:14

Tgt Ion: 56 Resp: 156
 Ion Ratio Lower Upper
 56 100
 55 42.3 56.2 84.4#

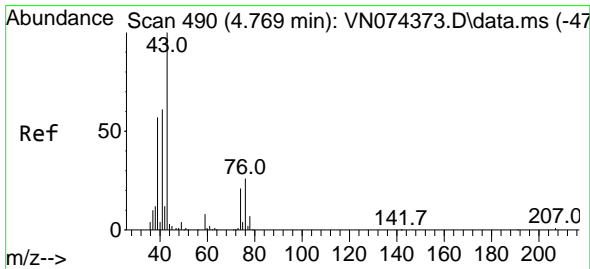
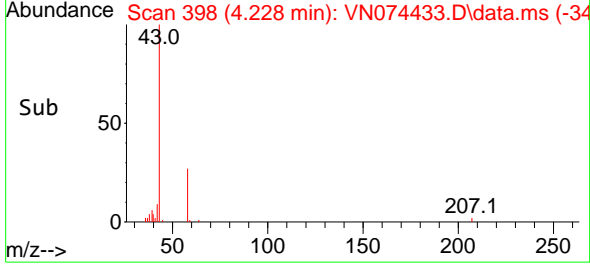
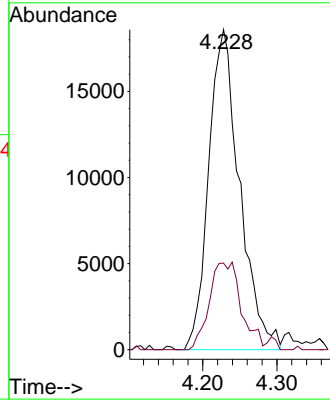
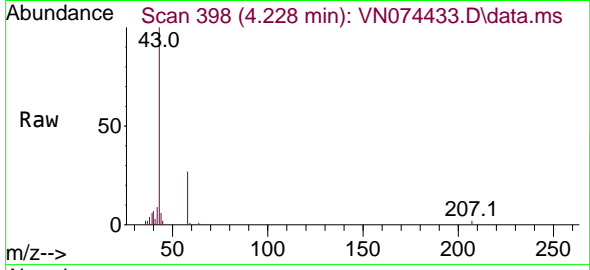




#16
 Acetone
 Concen: 23.115 ug/l
 RT: 4.228 min Scan# 397
 Delta R.T. 0.006 min
 Lab File: VN074433.D
 Acq: 13 Sep 2022 02:14

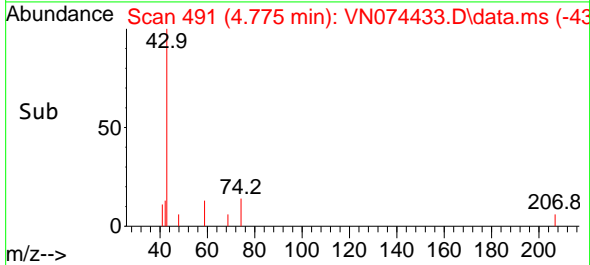
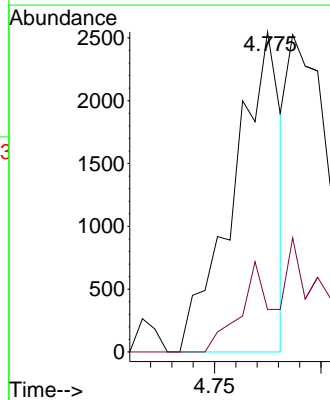
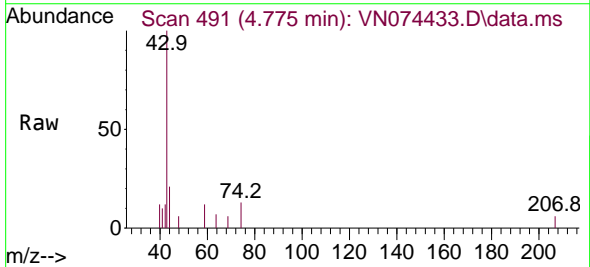
Instrument :
 MSVOA_N
 ClientSampleId :
 CO-1

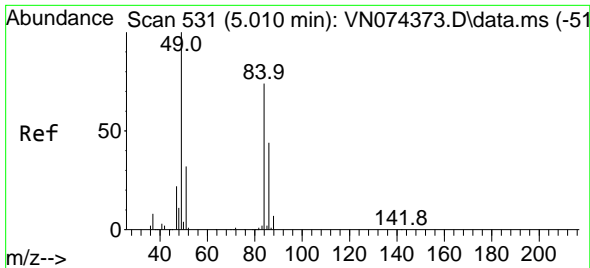
Tgt Ion: 43 Resp: 53834
 Ion Ratio Lower Upper
 43 100
 58 27.1 22.7 34.1



#18
 Methyl Acetate
 Concen: 0.567 ug/l
 RT: 4.775 min Scan# 491
 Delta R.T. 0.006 min
 Lab File: VN074433.D
 Acq: 13 Sep 2022 02:14

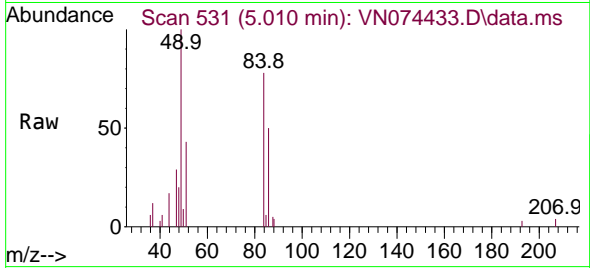
Tgt Ion: 43 Resp: 3891
 Ion Ratio Lower Upper
 43 100
 74 15.7 16.7 25.1#



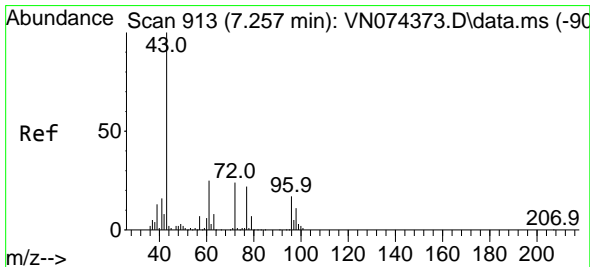
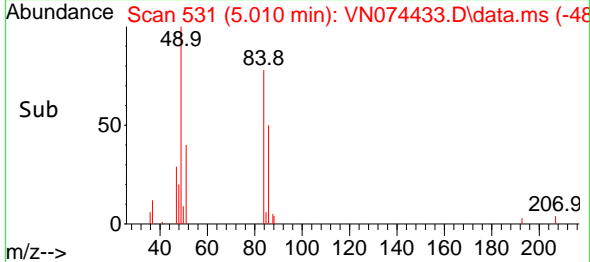
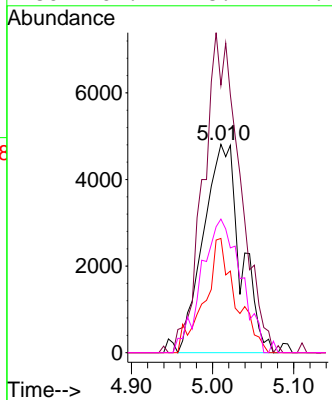


#20
 Methylene Chloride
 Concen: 3.099 ug/l
 RT: 5.010 min Scan# 51
 Delta R.T. 0.000 min
 Lab File: VN074433.D
 Acq: 13 Sep 2022 02:14

Instrument :
 MSVOA_N
 ClientSampleId :
 CO-1

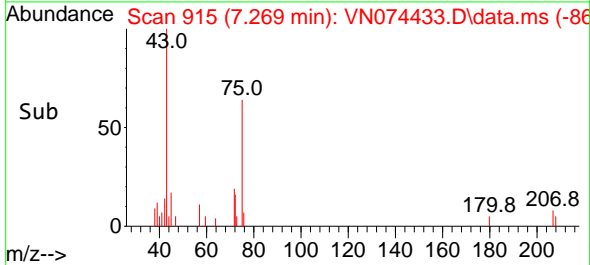
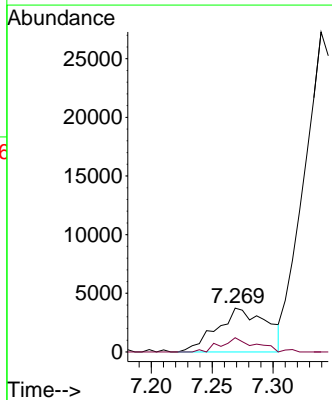
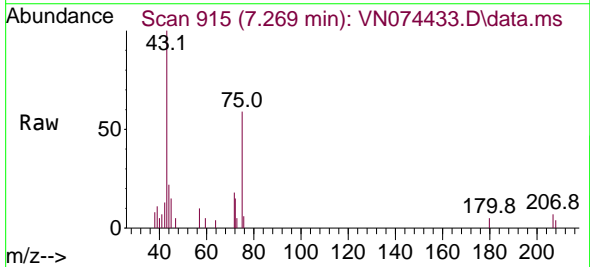


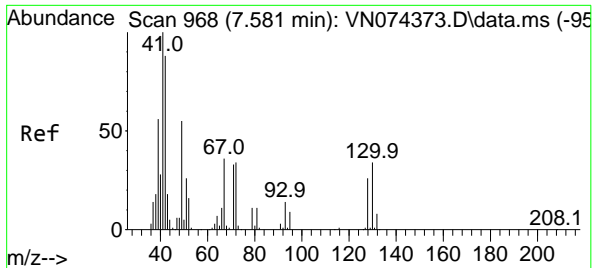
Tgt Ion: 84 Resp: 15412
 Ion Ratio Lower Upper
 84 100
 49 125.1 108.2 162.4
 51 54.9 34.3 51.5#
 86 64.1 48.2 72.2



#25
 2-Butanone
 Concen: 2.729 ug/l
 RT: 7.269 min Scan# 915
 Delta R.T. 0.012 min
 Lab File: VN074433.D
 Acq: 13 Sep 2022 02:14

Tgt Ion: 43 Resp: 10669
 Ion Ratio Lower Upper
 43 100
 72 32.7 18.9 28.3#



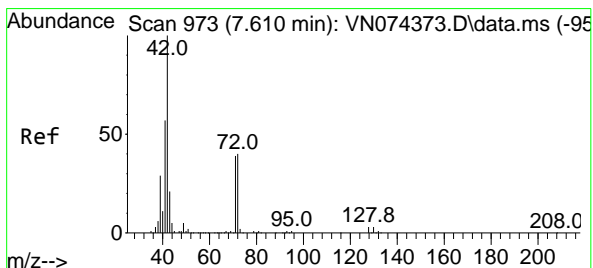
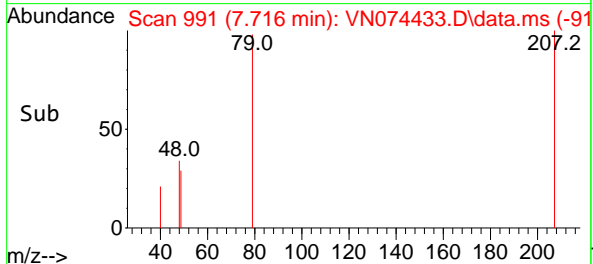
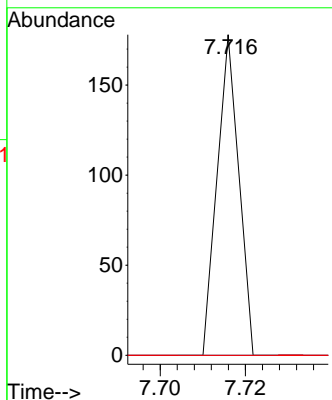
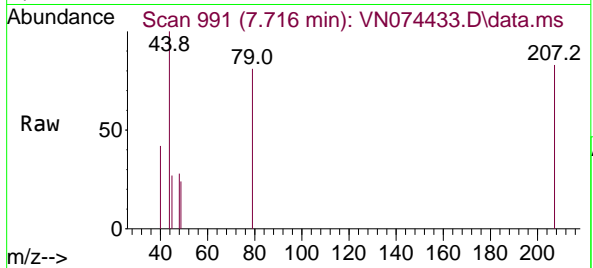


#28
 Bromochloromethane
 Concen: Below Cal
 RT: 7.716 min Scan# 91
 Delta R.T. 0.135 min
 Lab File: VN074433.D
 Acq: 13 Sep 2022 02:14

Instrument :
 MSVOA_N
 ClientSampleId :
 CO-1

Tgt Ion: 49 Resp: 63

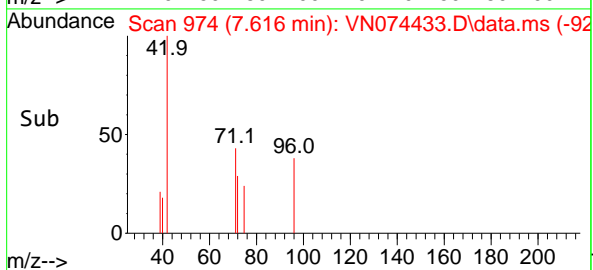
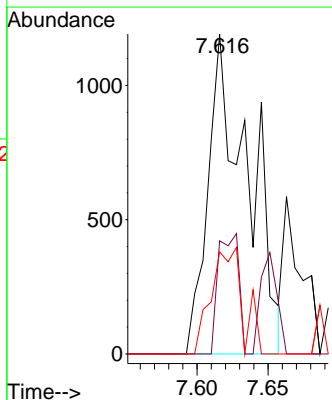
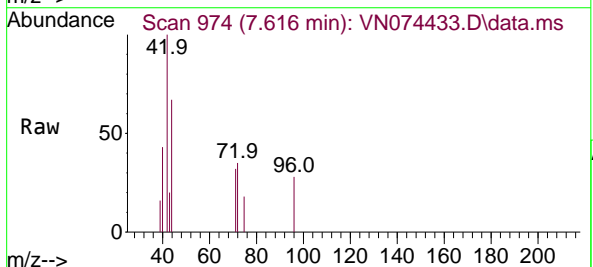
Ion	Ratio	Lower	Upper
49	100		
129	0.0	0.0	2.2
130	0.0	50.0	75.0#

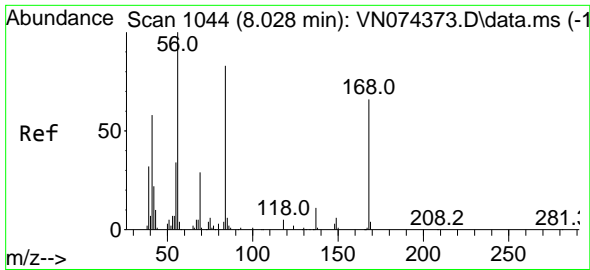


#29
 Tetrahydrofuran
 Concen: 0.900 ug/l
 RT: 7.616 min Scan# 974
 Delta R.T. 0.006 min
 Lab File: VN074433.D
 Acq: 13 Sep 2022 02:14

Tgt Ion: 42 Resp: 2325

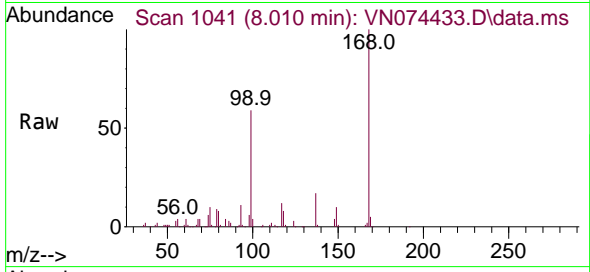
Ion	Ratio	Lower	Upper
42	100		
72	19.3	32.7	49.1#
71	26.1	31.0	46.6#



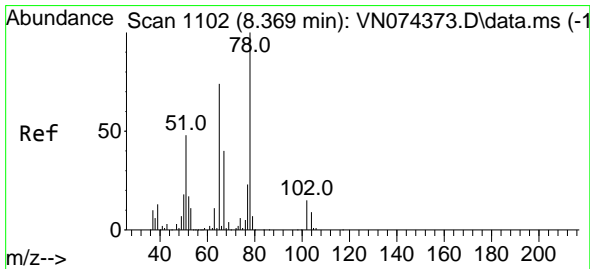
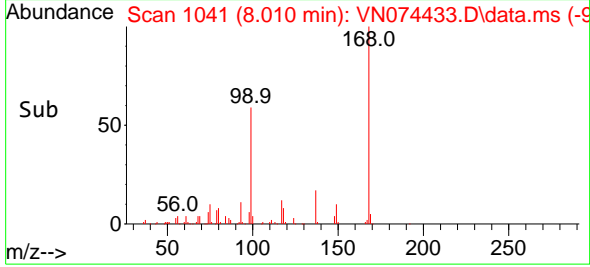
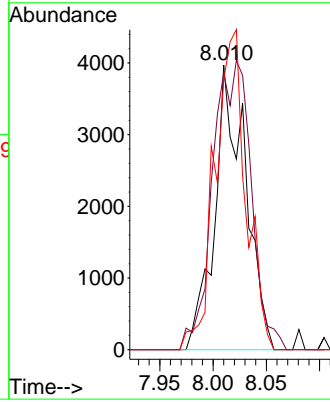


#31
 Cyclohexane
 Concen: 1.167 ug/l
 RT: 8.010 min Scan# 1103
 Delta R.T. -0.018 min
 Lab File: VN074433.D
 Acq: 13 Sep 2022 02:14

Instrument : MSVOA_N
 ClientSampleId : CO-1

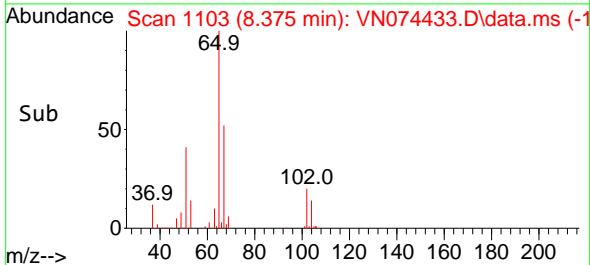
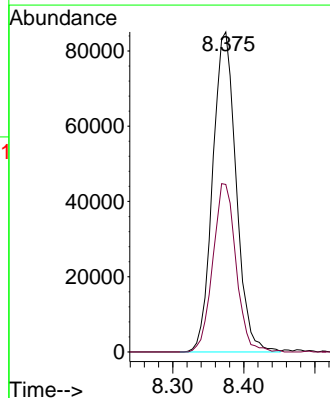
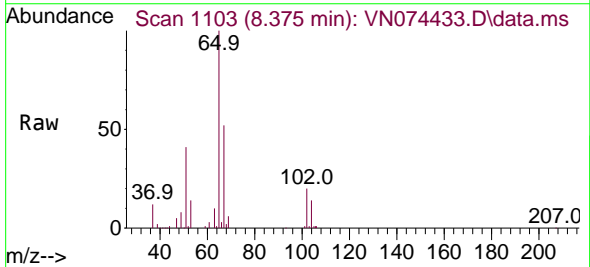


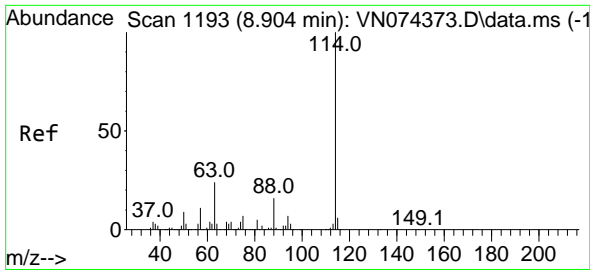
Tgt Ion: 56 Resp: 8006
 Ion Ratio Lower Upper
 56 100
 69 97.2 23.0 34.4#
 84 95.0 66.3 99.5



#33
 1,2-Dichloroethane-d4
 Concen: 45.121 ug/l
 RT: 8.375 min Scan# 1103
 Delta R.T. 0.006 min
 Lab File: VN074433.D
 Acq: 13 Sep 2022 02:14

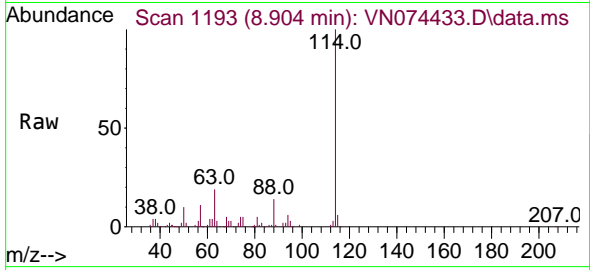
Tgt Ion: 65 Resp: 194647
 Ion Ratio Lower Upper
 65 100
 67 52.0 0.0 102.4



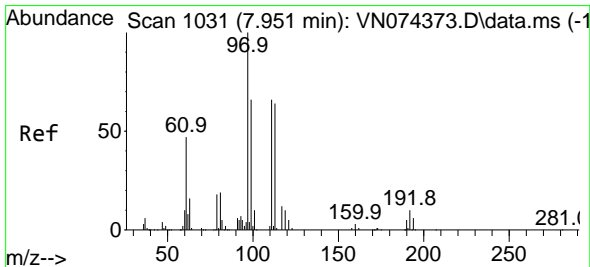
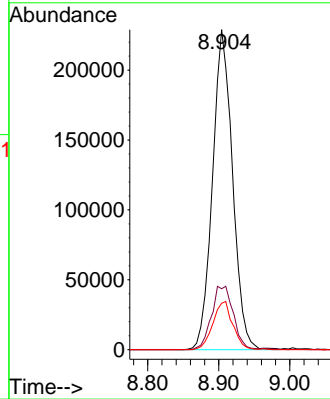
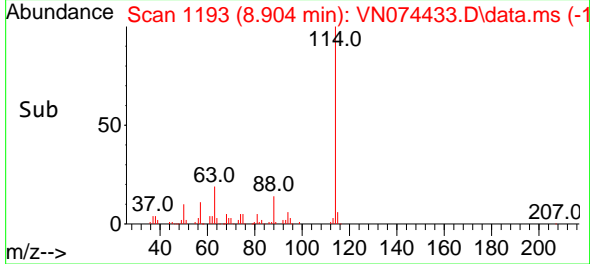


#34
 1,4-Difluorobenzene
 Concen: 50.000 ug/l
 RT: 8.904 min Scan# 1119
 Delta R.T. 0.000 min
 Lab File: VN074433.D
 Acq: 13 Sep 2022 02:14

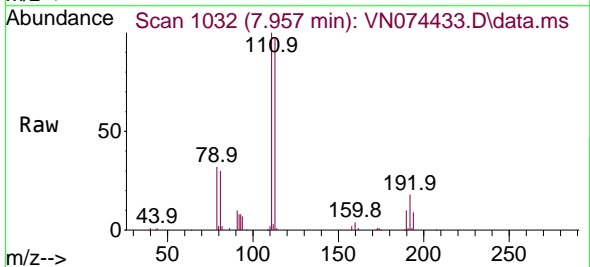
Instrument :
 MSVOA_N
 ClientSampleId :
 CO-1



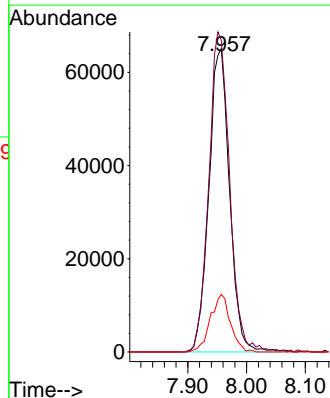
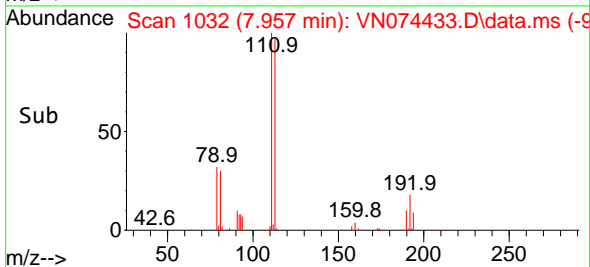
Tgt Ion:114 Resp: 448533
 Ion Ratio Lower Upper
 114 100
 63 19.1 0.0 47.6
 88 14.5 0.0 31.4

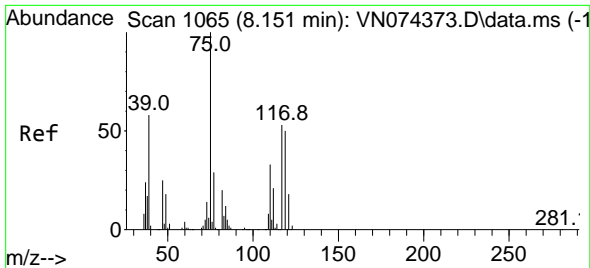


#35
 Dibromofluoromethane
 Concen: 52.626 ug/l
 RT: 7.957 min Scan# 1032
 Delta R.T. 0.006 min
 Lab File: VN074433.D
 Acq: 13 Sep 2022 02:14



Tgt Ion:113 Resp: 159354
 Ion Ratio Lower Upper
 113 100
 111 106.5 83.0 124.4
 192 18.3 13.7 20.5

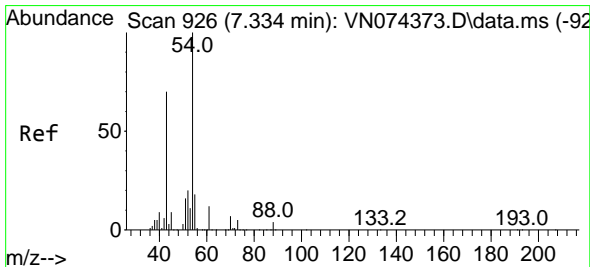
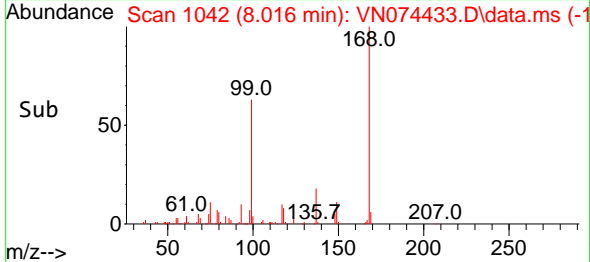
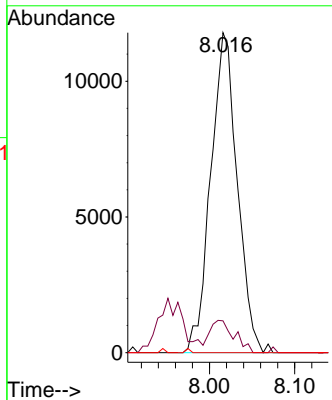
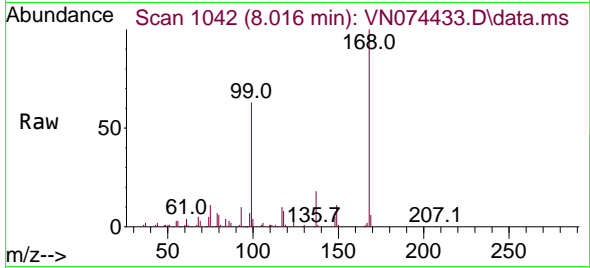




#36
 1,1-Dichloropropene
 Concen: 5.126 ug/l
 RT: 8.016 min Scan# 1065
 Delta R.T. -0.135 min
 Lab File: VN074433.D
 Acq: 13 Sep 2022 02:14

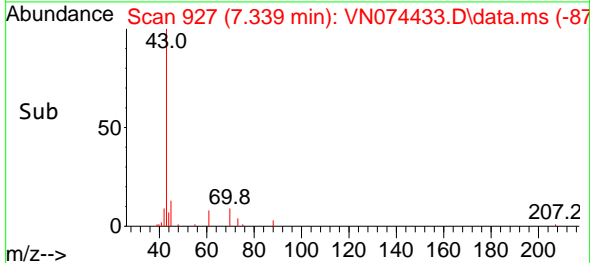
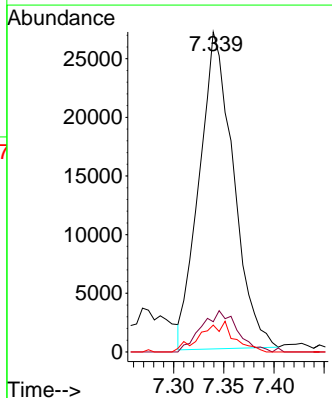
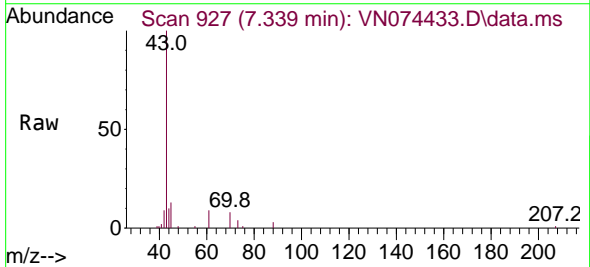
Instrument : MSVOA_N
 ClientSampleId : CO-1

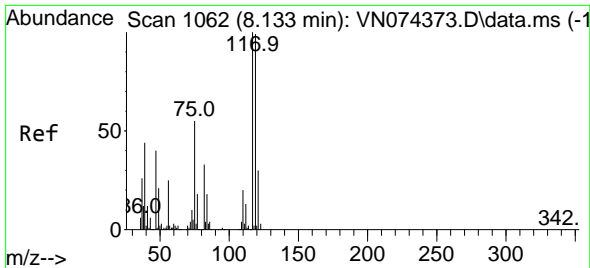
Tgt Ion	Resp	Lower	Upper
75	25572		
110	9.2	16.4	49.1#
77	0.0	25.4	38.2#



#37
 Ethyl Acetate
 Concen: 8.853 ug/l
 RT: 7.339 min Scan# 927
 Delta R.T. 0.006 min
 Lab File: VN074433.D
 Acq: 13 Sep 2022 02:14

Tgt Ion	Resp	Lower	Upper
43	64062		
61	13.7	11.1	16.7
70	9.3	7.2	10.8

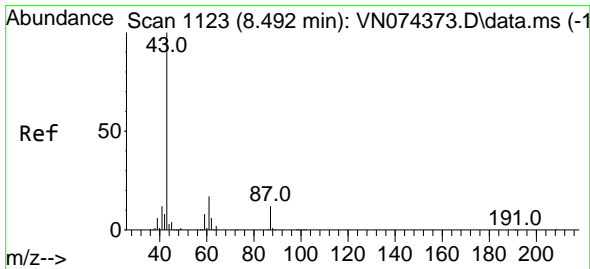
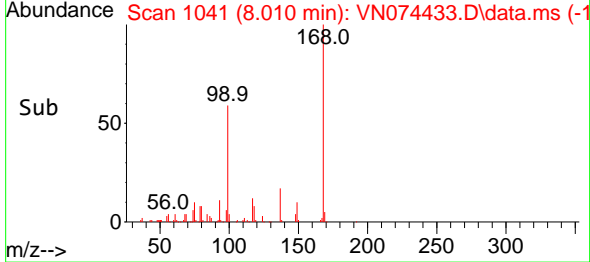
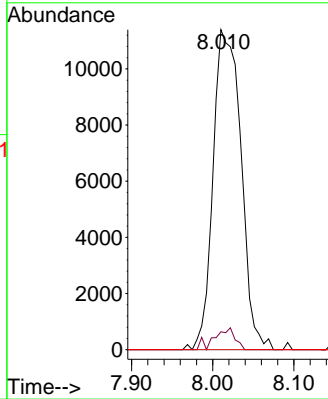
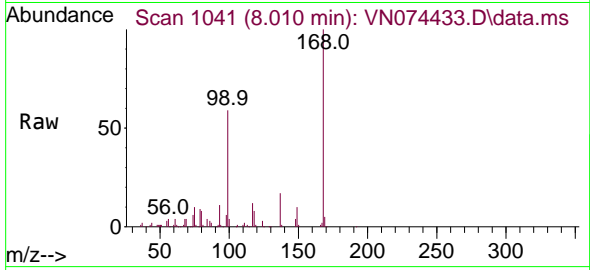




#38
 Carbon Tetrachloride
 Concen: 5.280 ug/l
 RT: 8.010 min Scan# 110
 Delta R.T. -0.123 min
 Lab File: VN074433.D
 Acq: 13 Sep 2022 02:14

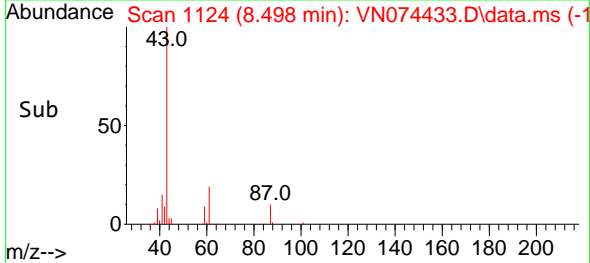
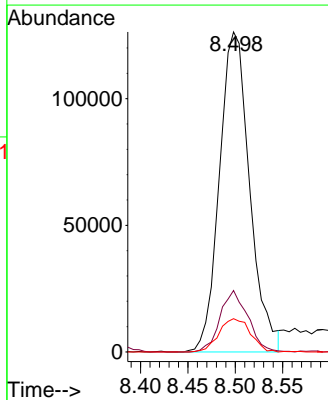
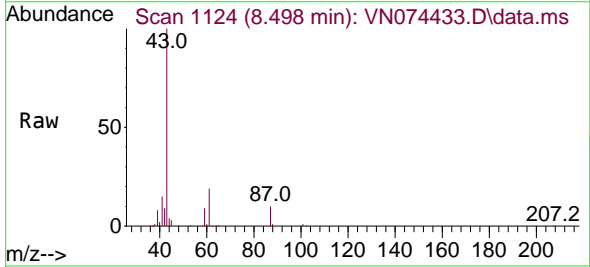
Instrument : MSVOA_N
 ClientSampleId : CO-1

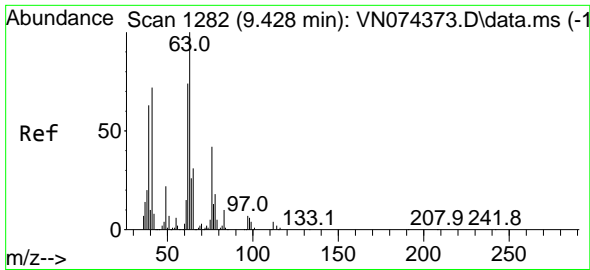
Tgt Ion: 117 Resp: 27194
 Ion Ratio Lower Upper
 117 100
 119 5.6 78.8 118.2#
 121 0.0 24.1 36.1#



#43
 Isopropyl Acetate
 Concen: 23.742 ug/l
 RT: 8.498 min Scan# 1124
 Delta R.T. 0.006 min
 Lab File: VN074433.D
 Acq: 13 Sep 2022 02:14

Tgt Ion: 43 Resp: 280966
 Ion Ratio Lower Upper
 43 100
 61 17.7 18.6 27.8#
 87 10.8 9.4 14.2

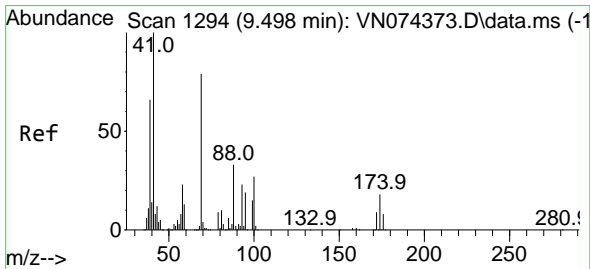
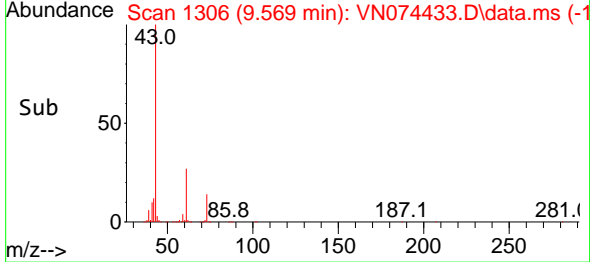
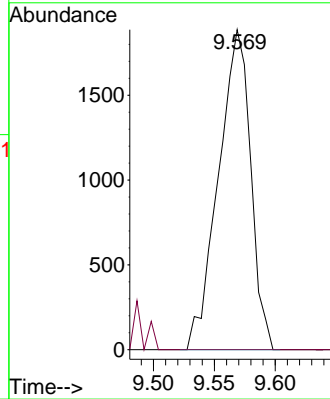
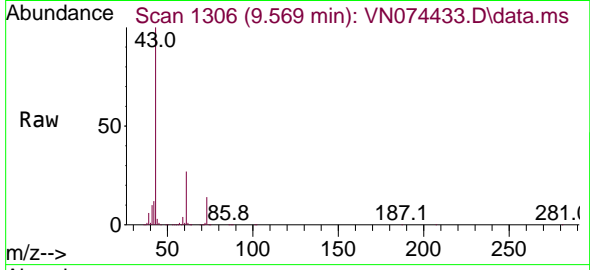




#45
 1,2-Dichloropropane
 Concen: 0.856 ug/l
 RT: 9.569 min Scan# 11
 Delta R.T. 0.141 min
 Lab File: VN074433.D
 Acq: 13 Sep 2022 02:14

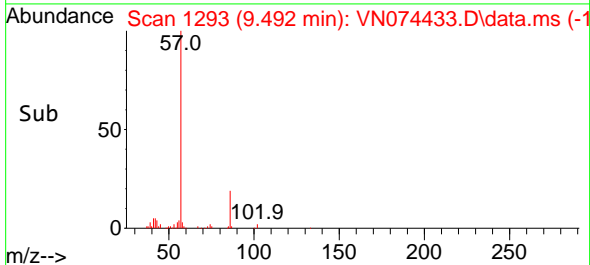
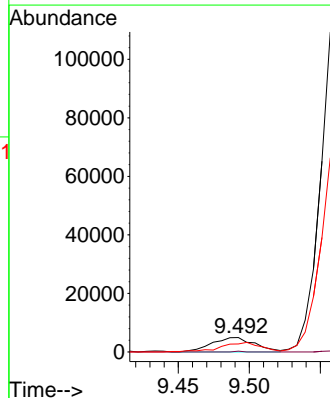
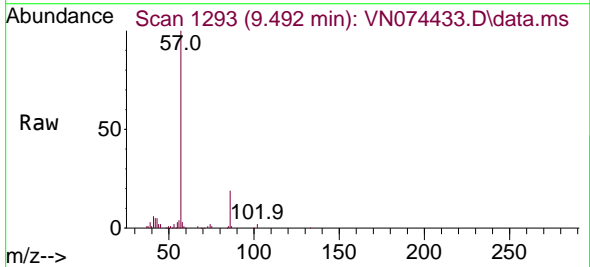
Instrument :
 MSVOA_N
 ClientSampleId :
 CO-1

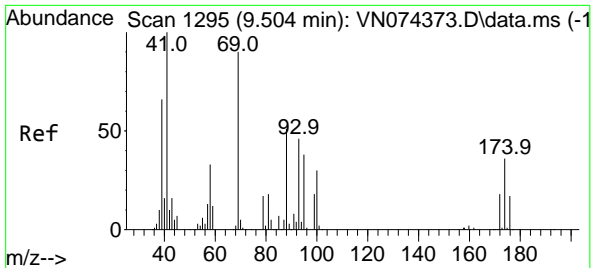
Tgt Ion: 63 Resp: 3470
 Ion Ratio Lower Upper
 63 100
 65 0.0 24.6 36.8#



#48
 Methyl methacrylate
 Concen: 2.013 ug/l
 RT: 9.492 min Scan# 1293
 Delta R.T. -0.006 min
 Lab File: VN074433.D
 Acq: 13 Sep 2022 02:14

Tgt Ion: 41 Resp: 10497
 Ion Ratio Lower Upper
 41 100
 69 0.9 67.6 101.4#
 39 61.6 58.2 87.4

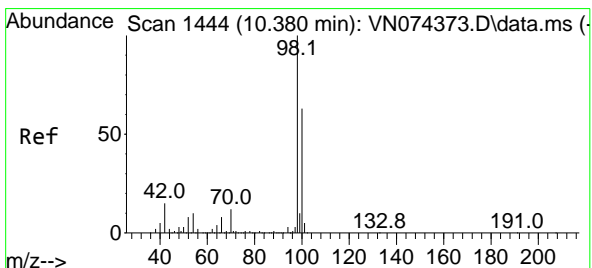
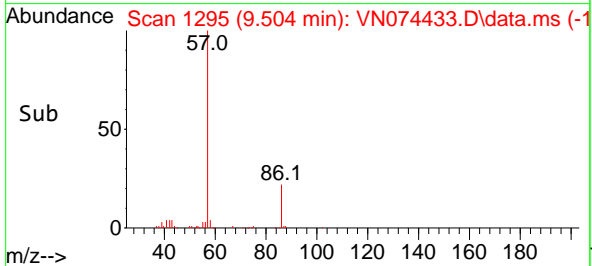
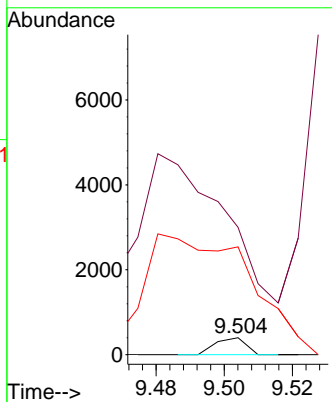
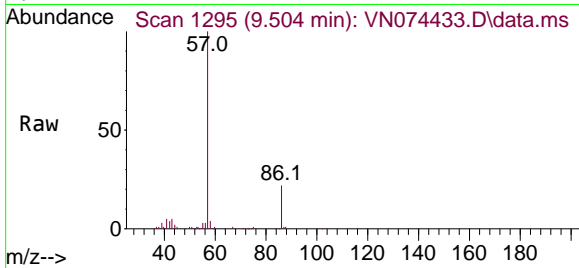




#49
 1,4-Dioxane
 Concen: 2.284 ug/l
 RT: 9.504 min Scan# 11
 Delta R.T. 0.000 min
 Lab File: VN074433.D
 Acq: 13 Sep 2022 02:14

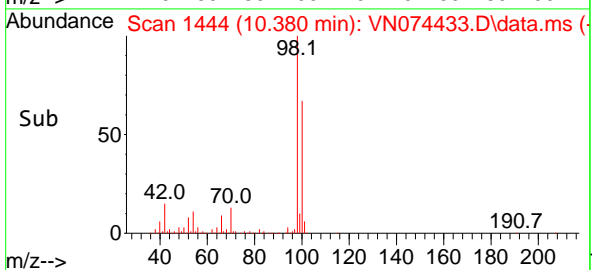
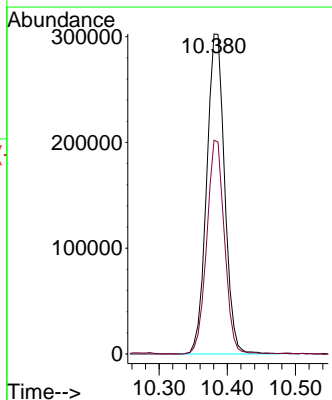
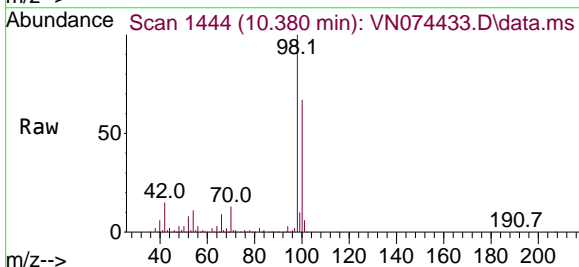
Instrument :
 MSVOA_N
 ClientSampleId :
 CO-1

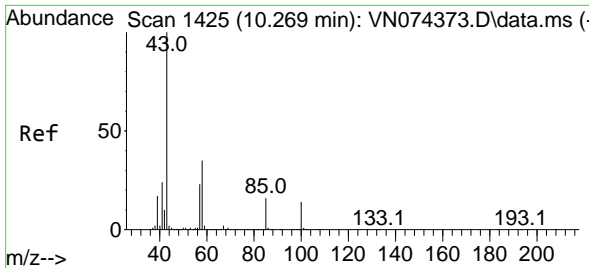
Tgt Ion	Resp	Lower	Upper
88	100		
43	0.0	26.9	40.3#
58	0.0	52.7	79.1#



#50
 Toluene-d8
 Concen: 46.972 ug/l
 RT: 10.380 min Scan# 1444
 Delta R.T. 0.000 min
 Lab File: VN074433.D
 Acq: 13 Sep 2022 02:14

Tgt Ion	Resp	Lower	Upper
98	100		
100	65.8	50.6	76.0

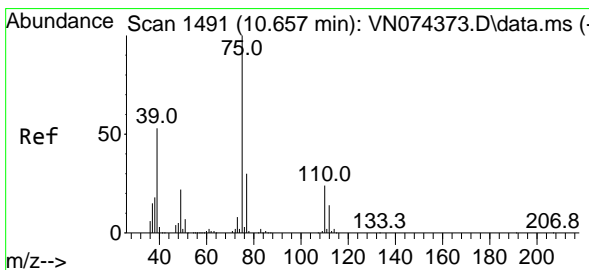
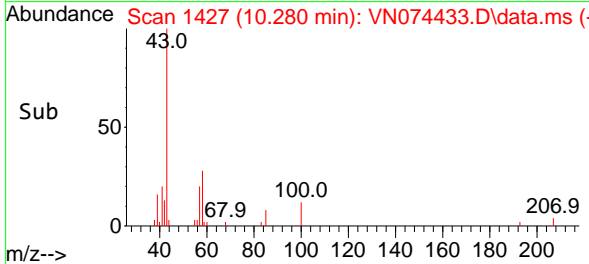
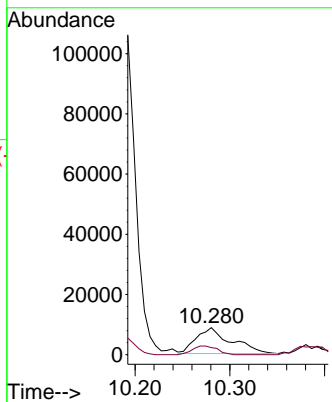
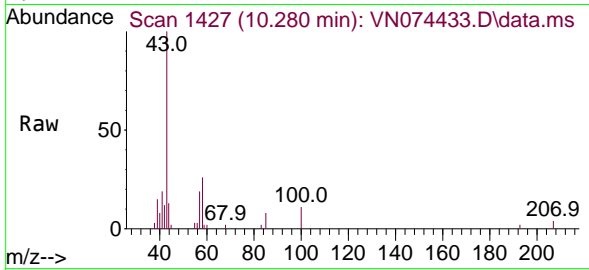




#51
 4-Methyl-2-Pentanone
 Concen: 2.840 ug/l
 RT: 10.280 min Scan# 1425
 Delta R.T. 0.012 min
 Lab File: VN074433.D
 Acq: 13 Sep 2022 02:14

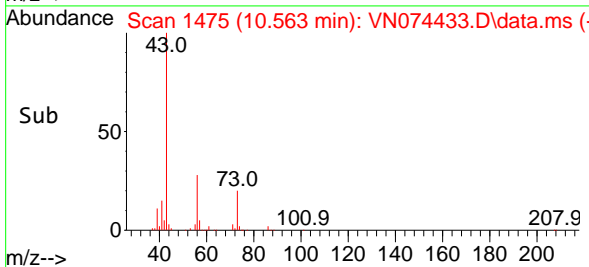
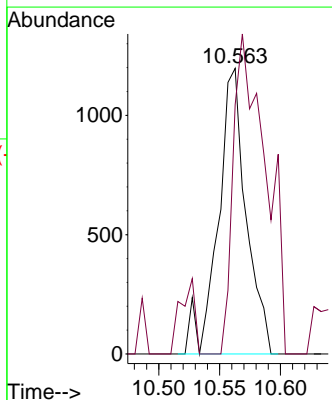
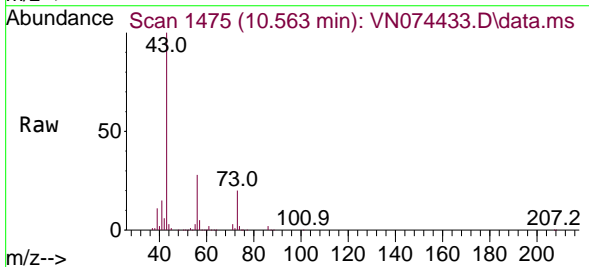
Instrument :
 MSVOA_N
 ClientSampleId :
 CO-1

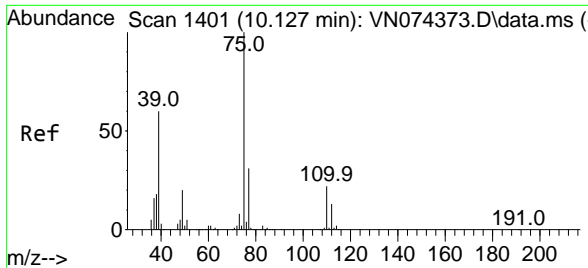
Tgt Ion: 43 Resp: 21978
 Ion Ratio Lower Upper
 43 100
 58 23.8 29.0 43.6#



#53
 t-1,3-Dichloropropene
 Concen: 0.313 ug/l
 RT: 10.563 min Scan# 1475
 Delta R.T. -0.094 min
 Lab File: VN074433.D
 Acq: 13 Sep 2022 02:14

Tgt Ion: 75 Resp: 1913
 Ion Ratio Lower Upper
 75 100
 77 68.8 23.9 35.9#

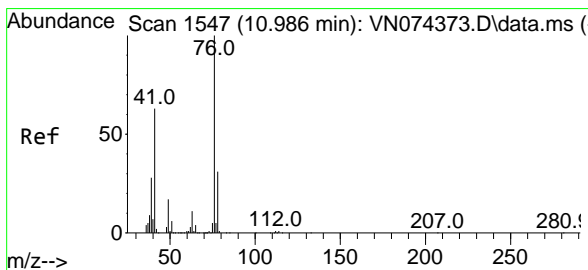
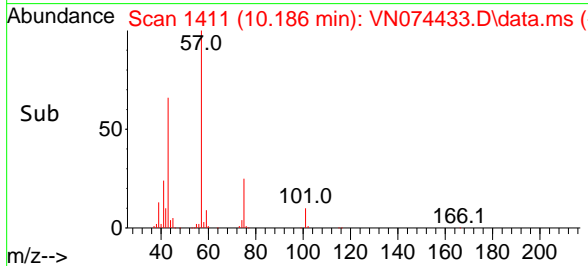
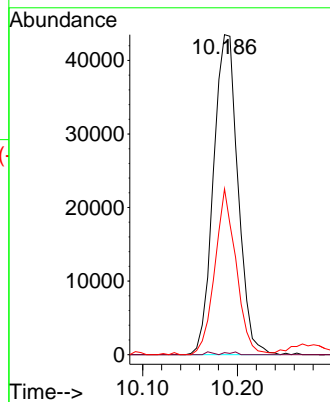
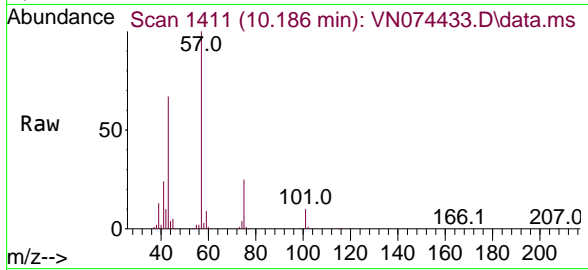




#54
 cis-1,3-Dichloropropene
 Concen: 12.042 ug/l
 RT: 10.186 min Scan# 1401
 Delta R.T. 0.059 min
 Lab File: VN074433.D
 Acq: 13 Sep 2022 02:14

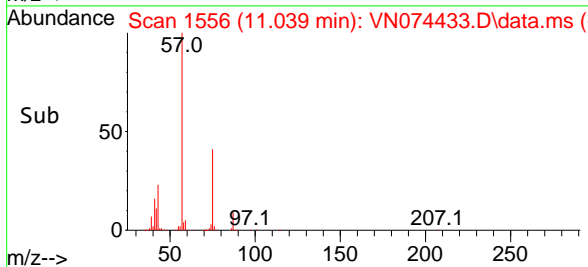
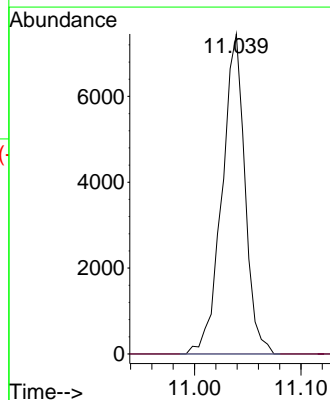
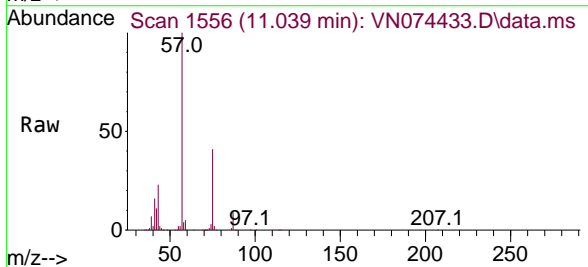
Instrument :
 MSVOA_N
 ClientSampleId :
 CO-1

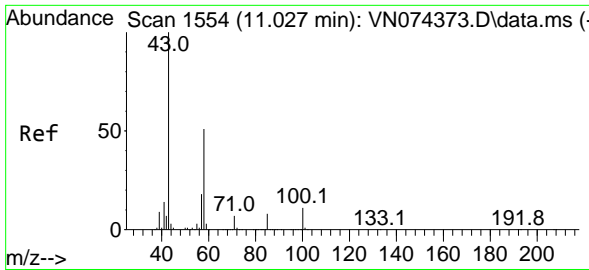
Tgt Ion: 75 Resp: 78365
 Ion Ratio Lower Upper
 75 100
 77 0.6 24.5 36.7#
 39 51.8 48.0 72.0



#57
 1,3-Dichloropropane
 Concen: 1.636 ug/l
 RT: 11.039 min Scan# 1556
 Delta R.T. 0.053 min
 Lab File: VN074433.D
 Acq: 13 Sep 2022 02:14

Tgt Ion: 76 Resp: 11133
 Ion Ratio Lower Upper
 76 100
 78 0.0 25.0 37.4#

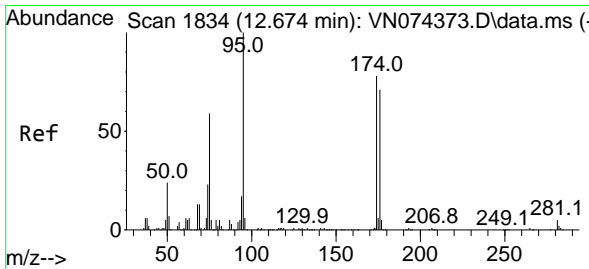
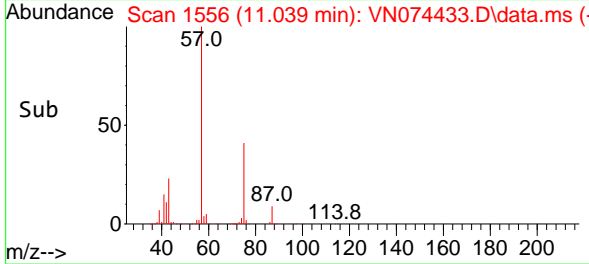
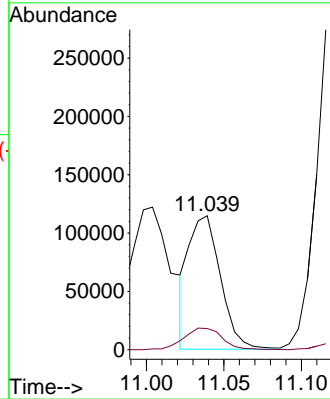
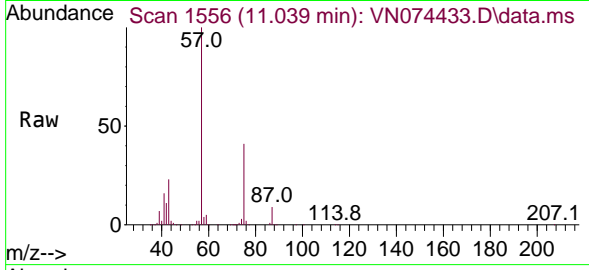




#59
 2-Hexanone
 Concen: 27.315 ug/l
 RT: 11.039 min Scan# 11
 Delta R.T. 0.012 min
 Lab File: VN074433.D
 Acq: 13 Sep 2022 02:14

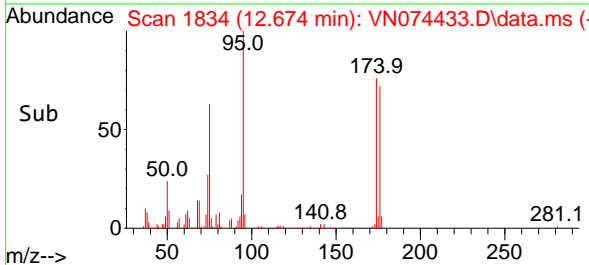
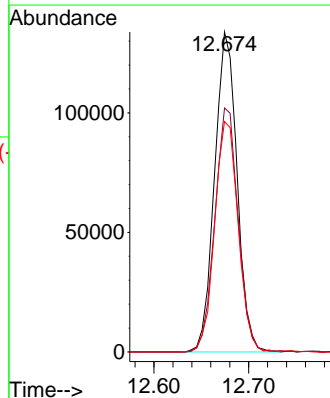
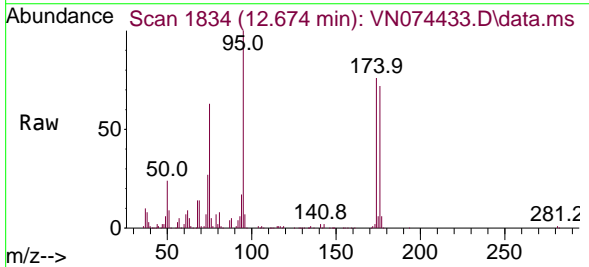
Instrument :
 MSVOA_N
 ClientSampleId :
 CO-1

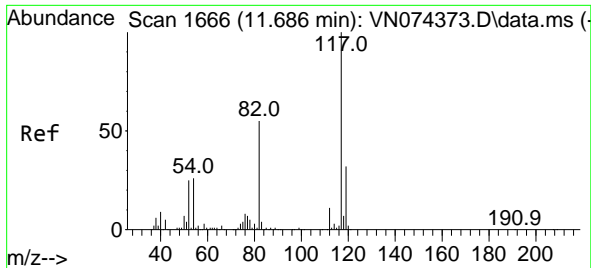
Tgt Ion: 43 Resp: 163133
 Ion Ratio Lower Upper
 43 100
 58 19.6 25.8 77.3#



#62
 4-Bromofluorobenzene
 Concen: 51.303 ug/l
 RT: 12.674 min Scan# 1834
 Delta R.T. 0.000 min
 Lab File: VN074433.D
 Acq: 13 Sep 2022 02:14

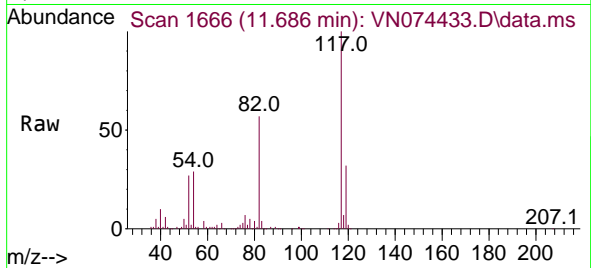
Tgt Ion: 95 Resp: 219766
 Ion Ratio Lower Upper
 95 100
 174 79.7 0.0 150.6
 176 75.6 0.0 143.4



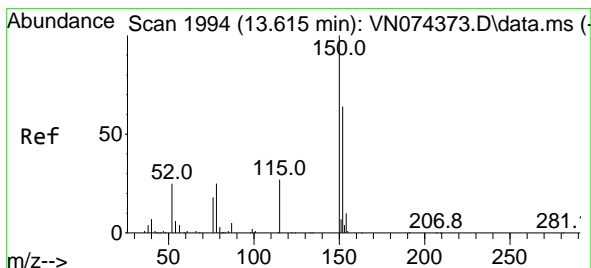
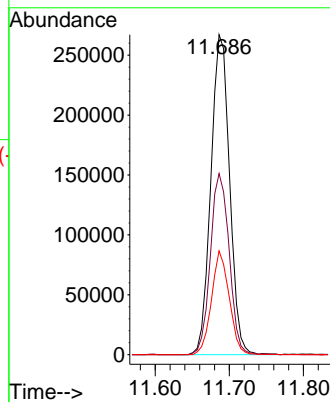
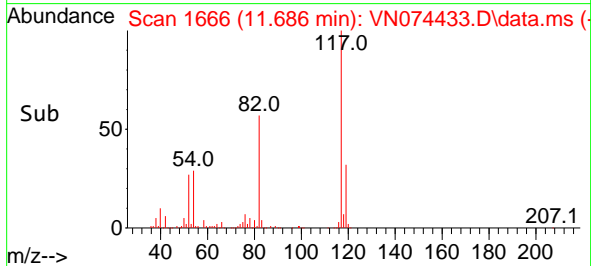


#63
 Chlorobenzene-d5
 Concen: 50.000 ug/l
 RT: 11.686 min Scan# 1170
 Delta R.T. 0.000 min
 Lab File: VN074433.D
 Acq: 13 Sep 2022 02:14

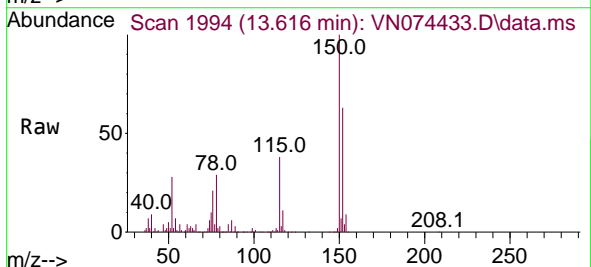
Instrument : MSVOA_N
 ClientSampleId : CO-1



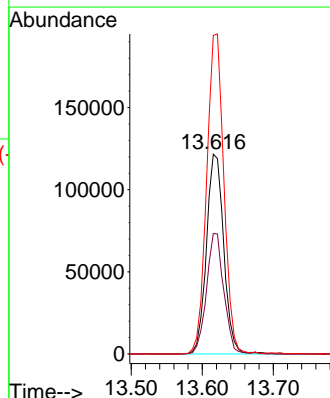
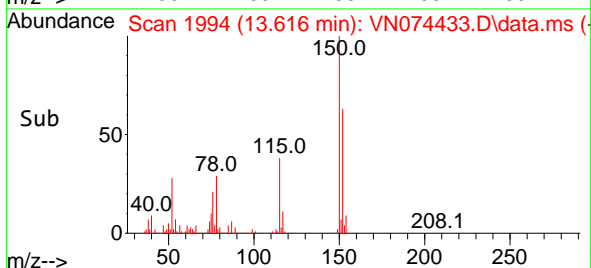
Tgt Ion:117 Resp: 468269
 Ion Ratio Lower Upper
 117 100
 82 56.6 44.3 66.5
 119 32.4 25.5 38.3

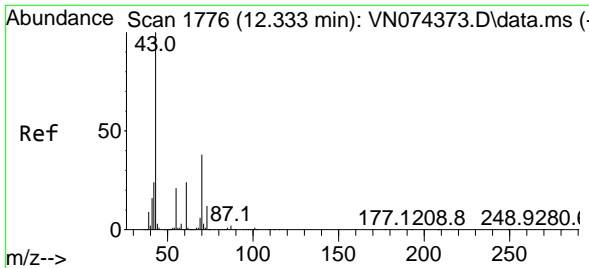


#72
 1,4-Dichlorobenzene-d4
 Concen: 50.000 ug/l
 RT: 13.616 min Scan# 1994
 Delta R.T. 0.001 min
 Lab File: VN074433.D
 Acq: 13 Sep 2022 02:14



Tgt Ion:152 Resp: 206246
 Ion Ratio Lower Upper
 152 100
 115 60.1 32.0 96.0
 150 159.2 0.0 359.6



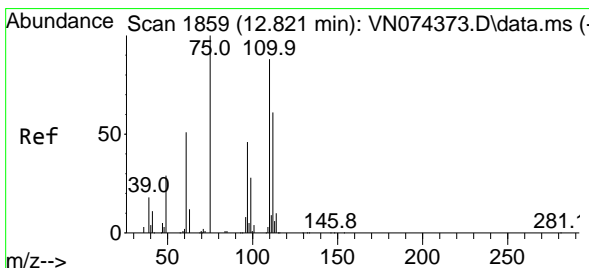
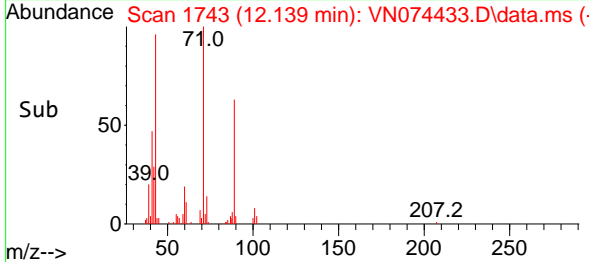
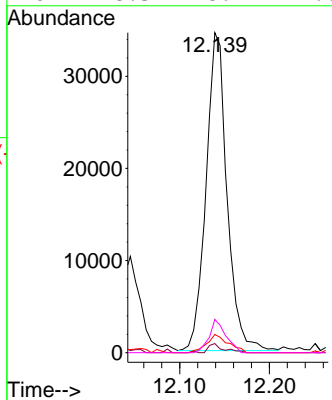
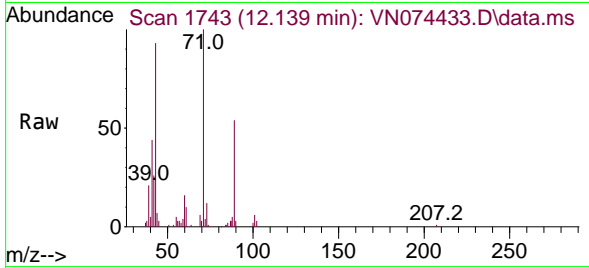


#74
 N-amy1 acetate
 Concen: 4.191 ug/l
 RT: 12.139 min Scan# 11
 Delta R.T. -0.194 min
 Lab File: VN074433.D
 Acq: 13 Sep 2022 02:14

Instrument :
 MSVOA_N
 ClientSampleId :
 CO-1

Tgt Ion: 43 Resp: 56000

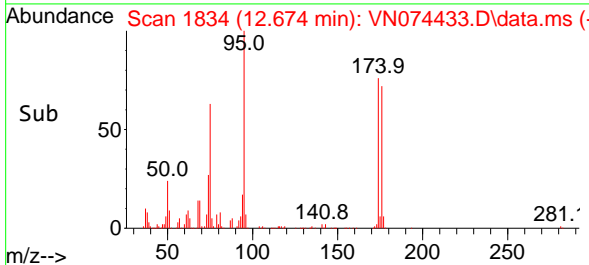
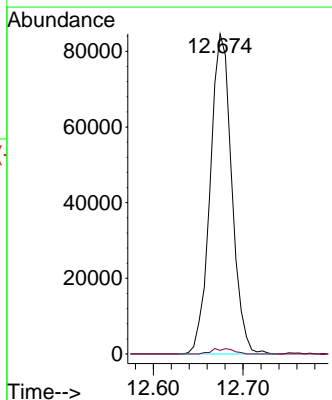
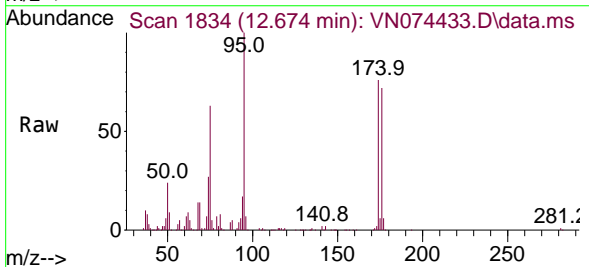
Ion	Ratio	Lower	Upper
43	100		
70	2.1	31.4	47.0#
55	5.9	17.0	25.6#
61	8.3	18.4	27.6#

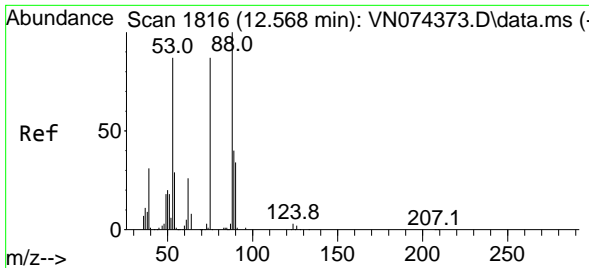


#76
 1,2,3-Trichloropropane
 Concen: 26.143 ug/l
 RT: 12.674 min Scan# 1834
 Delta R.T. -0.147 min
 Lab File: VN074433.D
 Acq: 13 Sep 2022 02:14

Tgt Ion: 75 Resp: 140955

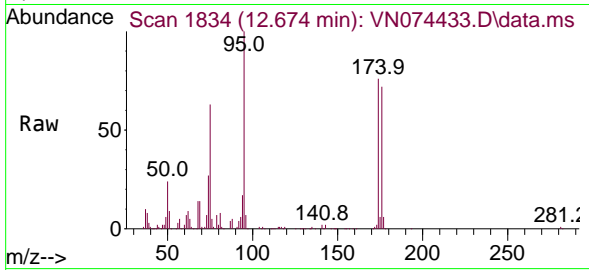
Ion	Ratio	Lower	Upper
75	100		
77	1.7	78.9	236.7#



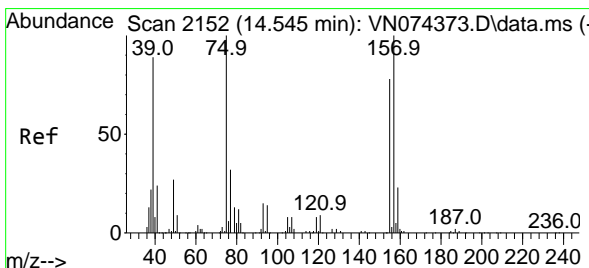
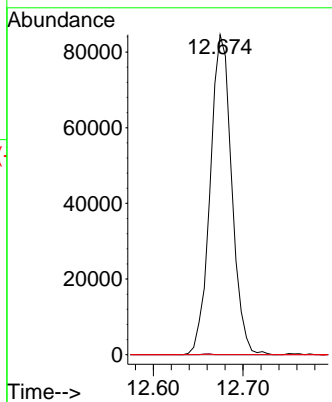
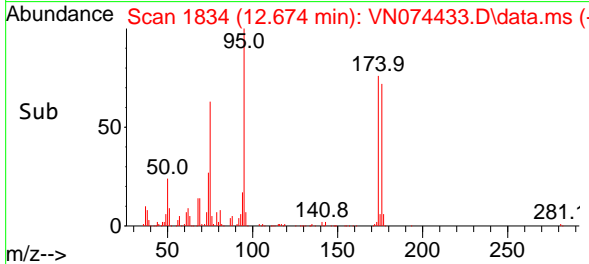


#81
 trans-1,4-Dichloro-2-butene
 Concen: 58.273 ug/l
 RT: 12.674 min Scan# 1834
 Delta R.T. 0.106 min
 Lab File: VN074433.D
 Acq: 13 Sep 2022 02:14

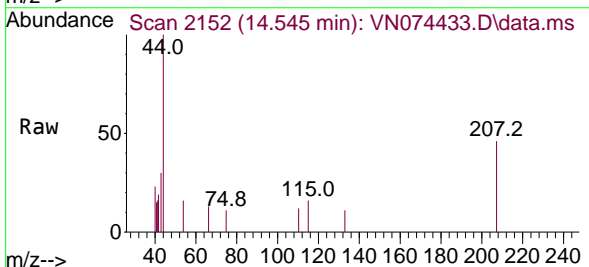
Instrument : MSVOA_N
 ClientSampleId : CO-1



Tgt Ion: 75 Resp: 140955
 Ion Ratio Lower Upper
 75 100
 53 0.1 82.2 123.2#
 89 0.0 37.7 56.5#



#92
 1,2-Dibromo-3-Chloropropane
 Concen: Below Cal
 RT: 14.545 min Scan# 2152
 Delta R.T. -0.000 min
 Lab File: VN074433.D
 Acq: 13 Sep 2022 02:14



Tgt Ion: 75 Resp: 56
 Ion Ratio Lower Upper
 75 100
 155 0.0 36.6 109.9#
 157 0.0 46.2 138.5#

