

Data Path : Z:\voasrv\HPCHEM1\MSVOA\_N\Data\VN091224\  
 Data File : VN083851.D  
 Acq On : 13 Sep 2024 04:13  
 Operator : JC\MD  
 Sample : P3957-03  
 Misc : 5.0mL/MSVOA\_N/WATER  
 ALS Vial : 39 Sample Multiplier: 1

**Instrument :**  
 MSVOA\_N  
**ClientSampleId :**  
 MW203D-20240909

Quant Time: Sep 23 06:08:15 2024  
 Quant Method : Z:\voasrv\HPCHEM1\MSVOA\_N\methods\82N091024W.M  
 Quant Title : SW846 8260  
 QLast Update : Wed Sep 11 15:18:56 2024  
 Response via : Initial Calibration

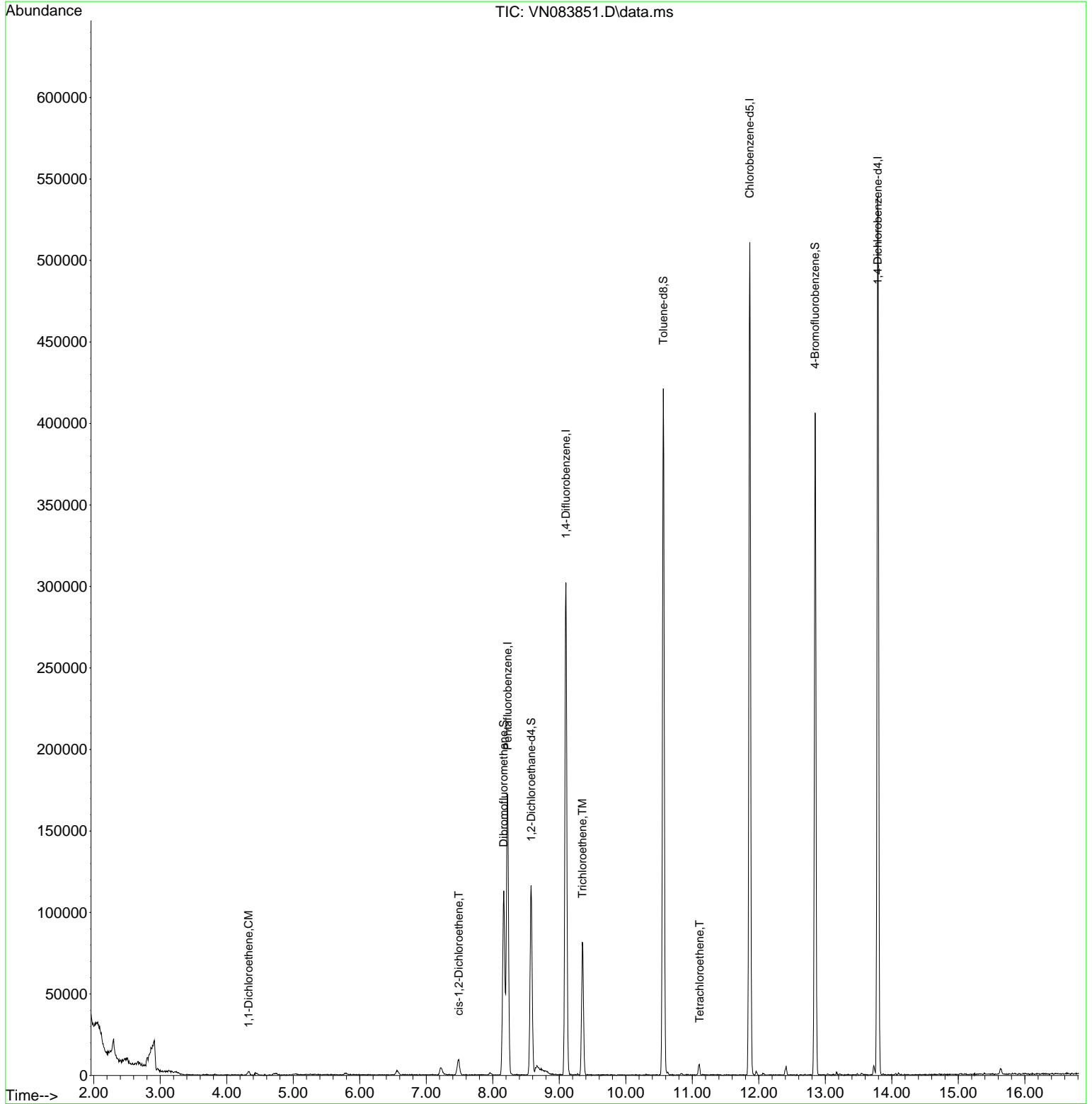
Compound	R. T.	QI on	Response	Conc	Units	Dev(Min)
<b>Internal Standards</b>						
1) Pentafluorobenzene	8.224	168	117445	50.000	ug/l	0.00
34) 1,4-Difluorobenzene	9.100	114	248633	50.000	ug/l	0.00
63) Chlorobenzene-d5	11.865	117	276381	50.000	ug/l	0.00
72) 1,4-Dichlorobenzene-d4	13.788	152	136729	50.000	ug/l	0.00
<b>System Monitoring Compounds</b>						
33) 1,2-Dichloroethane-d4	8.577	65	96976	54.761	ug/l	0.00
Spiked Amount	50.000	Range 74 - 125	Recovery	=	109.520%	
35) Dibromofluoromethane	8.165	113	76158	47.846	ug/l	0.00
Spiked Amount	50.000	Range 75 - 124	Recovery	=	95.700%	
50) Toluene-d8	10.565	98	281013	51.069	ug/l	0.00
Spiked Amount	50.000	Range 86 - 113	Recovery	=	102.140%	
62) 4-Bromofluorobenzene	12.847	95	136415	60.088	ug/l	0.00
Spiked Amount	50.000	Range 77 - 121	Recovery	=	120.180%	
<b>Target Compounds</b>						
12) 1,1-Dichloroethene	4.330	96	1193	0.939	ug/l	85
27) cis-1,2-Dichloroethene	7.489	96	5603	3.467	ug/l	92
44) Trichloroethene	9.347	130	26918	16.120	ug/l	94
64) Tetrachloroethene	11.112	164	1522	0.828	ug/l #	70

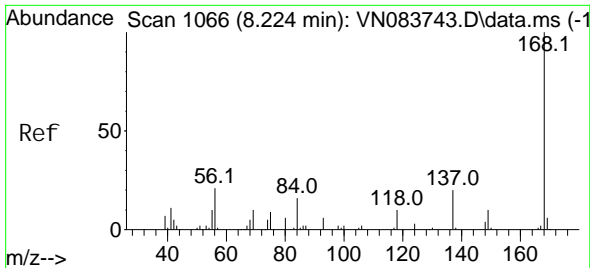
(#) = qualifier out of range (m) = manual integration (+) = signals summed

Data Path : Z:\voasrv\HPCHEM1\MSVOA\_N\Data\VN091224\  
 Data File : VN083851.D  
 Acq On : 13 Sep 2024 04:13  
 Operator : JC\MD  
 Sample : P3957-03  
 Misc : 5.0mL/MSVOA\_N/WATER  
 ALS Vial : 39 Sample Multiplier: 1

**Instrument :**  
 MSVOA\_N  
**ClientSampleId :**  
 MW203D-20240909

Quant Time: Sep 23 06:08:15 2024  
 Quant Method : Z:\voasrv\HPCHEM1\MSVOA\_N\methods\82N091024W.M  
 Quant Title : SW846 8260  
 QLast Update : Wed Sep 11 15:18:56 2024  
 Response via : Initial Calibration

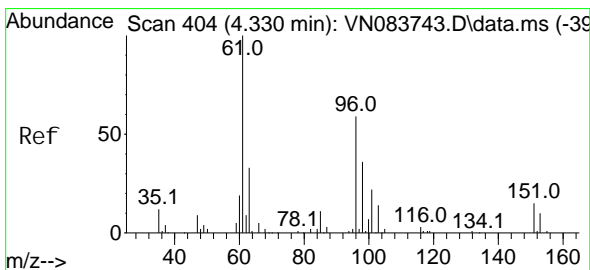
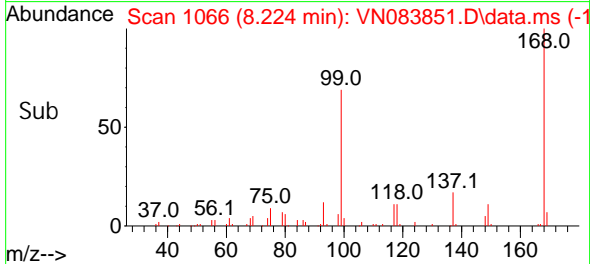
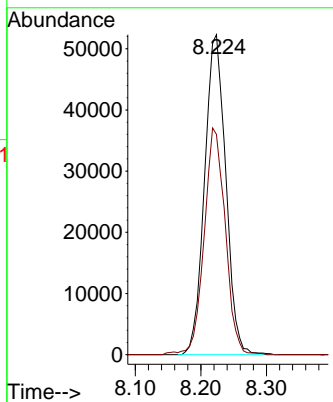
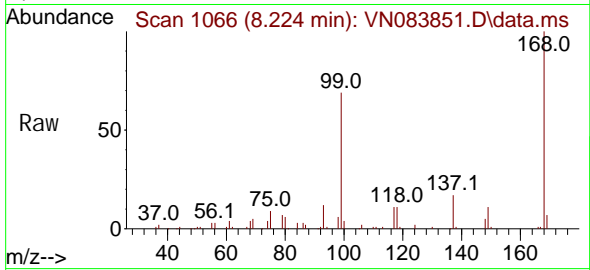




#1  
 Pentafluorobenzene  
 Concen: 50.000 ug/l  
 RT: 8.224 min Scan# 1066  
 Delta R.T. -0.000 min  
 Lab File: VN083851.D  
 Acq: 13 Sep 2024 04:13

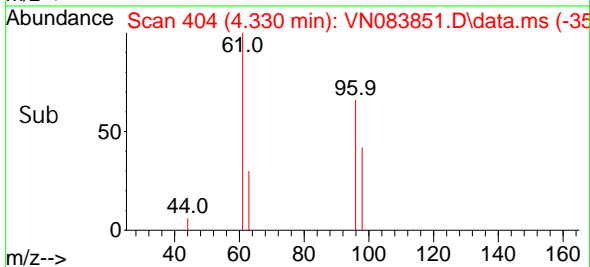
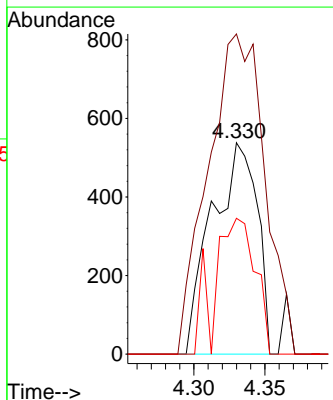
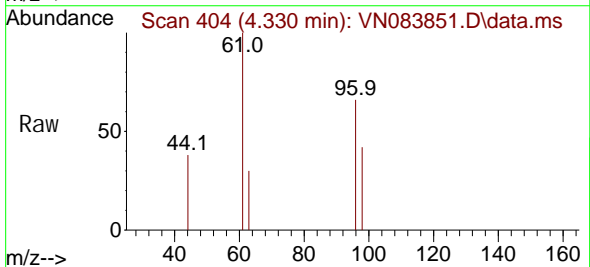
Instrument : MSVOA\_N  
 ClientSampleId : MW203D-20240909

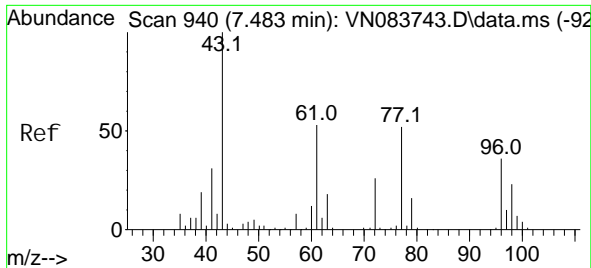
Tgt Ion: 168 Resp: 117445  
 Ion Ratio Lower Upper  
 168 100  
 99 68.9 54.2 81.2



#12  
 1,1-Dichloroethene  
 Concen: 0.939 ug/l  
 RT: 4.330 min Scan# 404  
 Delta R.T. 0.000 min  
 Lab File: VN083851.D  
 Acq: 13 Sep 2024 04:13

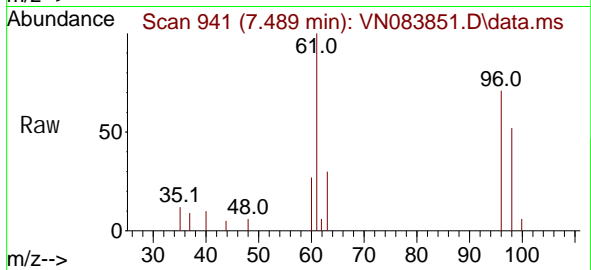
Tgt Ion: 96 Resp: 1193  
 Ion Ratio Lower Upper  
 96 100  
 61 151.5 143.4 215.0  
 98 64.3 52.7 79.1



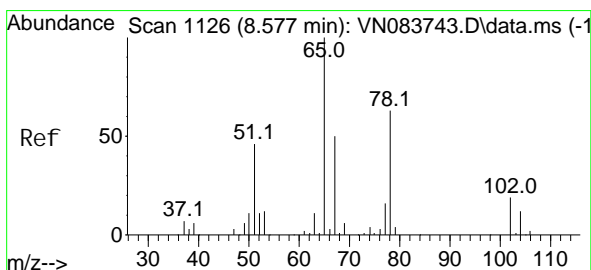
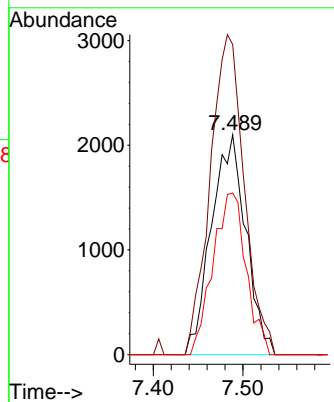
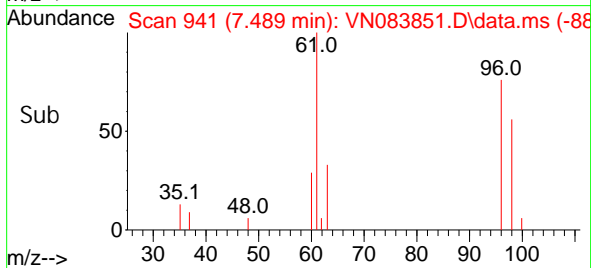


#27  
 cis-1,2-Dichloroethene  
 Concen: 3.467 ug/l  
 RT: 7.489 min Scan# 941  
 Delta R.T. 0.006 min  
 Lab File: VN083851.D  
 Acq: 13 Sep 2024 04:13

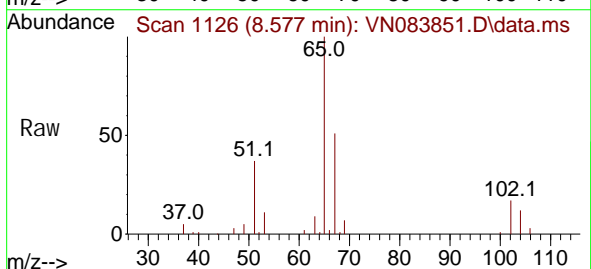
Instrument : MSVOA\_N  
 ClientSampleId : MW203D-20240909



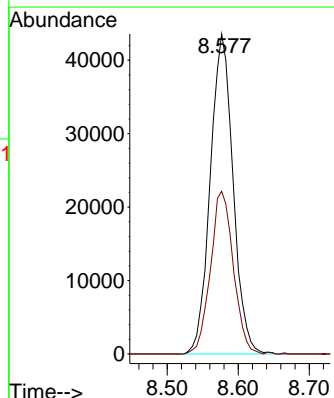
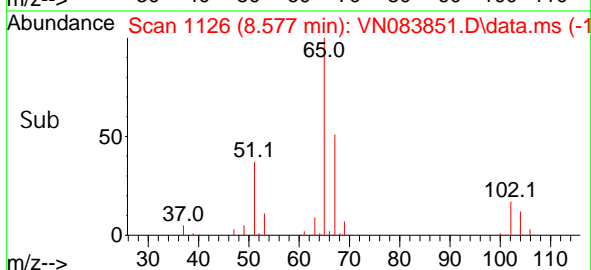
Tgt Ion: 96 Resp: 5603  
 Ion Ratio Lower Upper  
 96 100  
 61 143.9 0.0 306.2  
 98 70.9 0.0 128.6

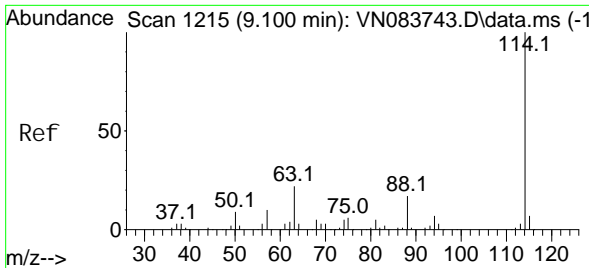


#33  
 1,2-Dichloroethane-d4  
 Concen: 54.761 ug/l  
 RT: 8.577 min Scan# 1126  
 Delta R.T. 0.000 min  
 Lab File: VN083851.D  
 Acq: 13 Sep 2024 04:13



Tgt Ion: 65 Resp: 96976  
 Ion Ratio Lower Upper  
 65 100  
 67 51.0 0.0 100.8

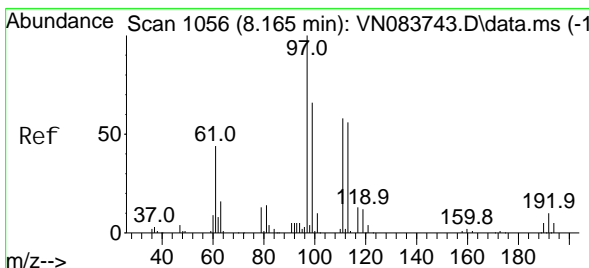
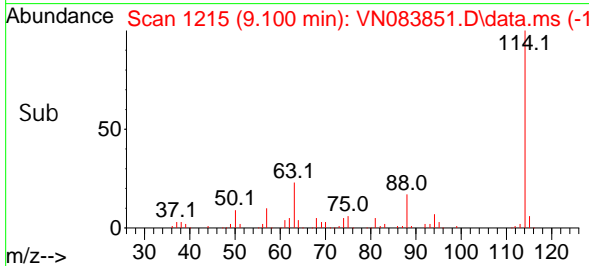
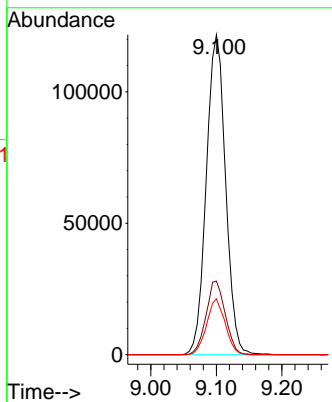
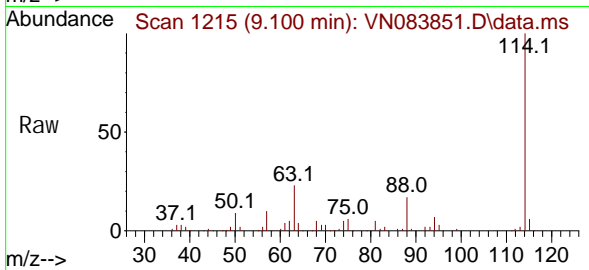




#34  
 1,4-Difluorobenzene  
 Concen: 50.000 ug/l  
 RT: 9.100 min Scan# 111  
 Delta R.T. 0.000 min  
 Lab File: VN083851.D  
 Acq: 13 Sep 2024 04:13

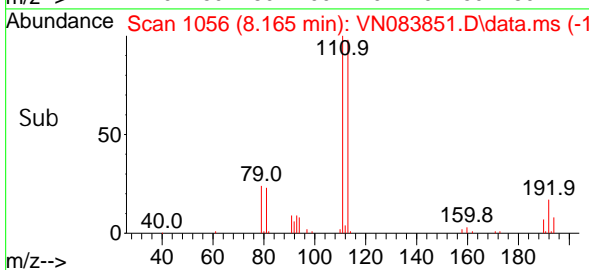
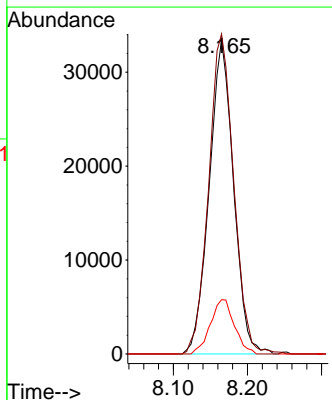
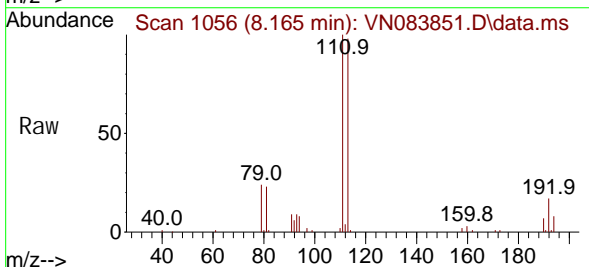
Instrument :  
 MSVOA\_N  
 ClientSampleId :  
 MW203D-20240909

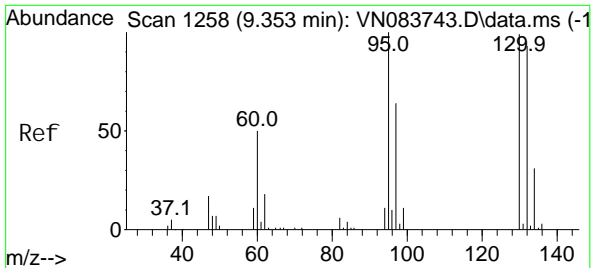
Tgt Ion	Resp	Lower	Upper
114	100		
63	23.0	0.0	43.4
88	17.5	0.0	32.6



#35  
 Dibromofluoromethane  
 Concen: 47.846 ug/l  
 RT: 8.165 min Scan# 1056  
 Delta R.T. 0.000 min  
 Lab File: VN083851.D  
 Acq: 13 Sep 2024 04:13

Tgt Ion	Resp	Lower	Upper
113	100		
111	104.9	82.6	124.0
192	17.1	14.3	21.5

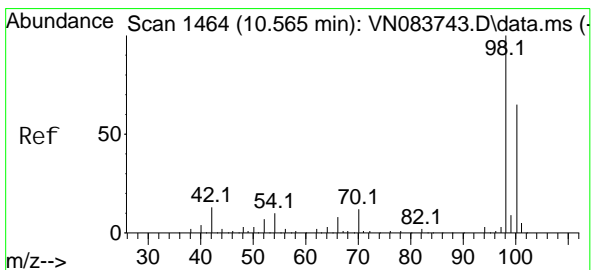
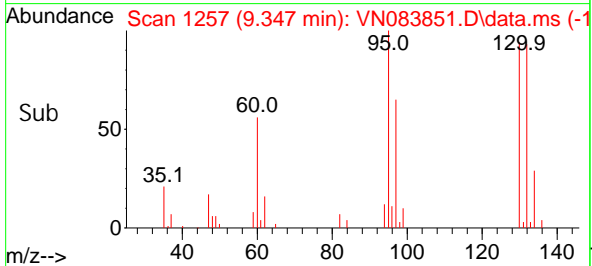
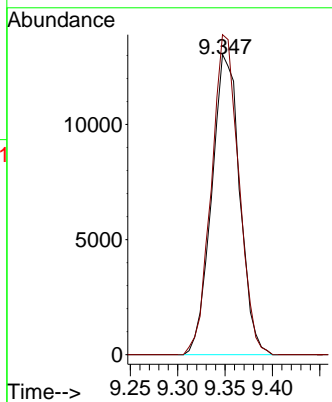
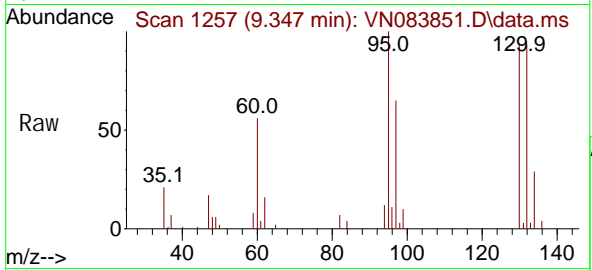




#44  
 Trichloroethene  
 Concen: 16.120 ug/l  
 RT: 9.347 min Scan# 11  
 Delta R.T. -0.006 min  
 Lab File: VN083851.D  
 Acq: 13 Sep 2024 04:13

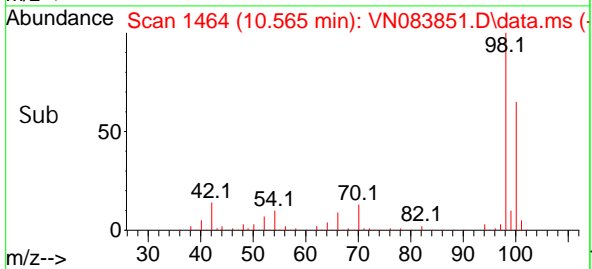
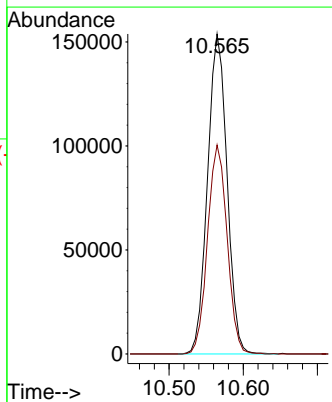
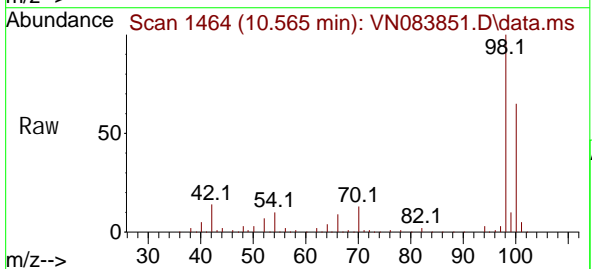
Instrument : MSVOA\_N  
 ClientSampleId : MW203D-20240909

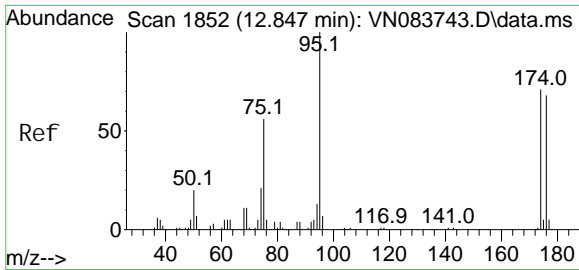
Tgt Ion: 130 Resp: 26918  
 Ion Ratio Lower Upper  
 130 100  
 95 106.5 0.0 200.4



#50  
 Tol uene-d8  
 Concen: 51.069 ug/l  
 RT: 10.565 min Scan# 1464  
 Delta R.T. 0.000 min  
 Lab File: VN083851.D  
 Acq: 13 Sep 2024 04:13

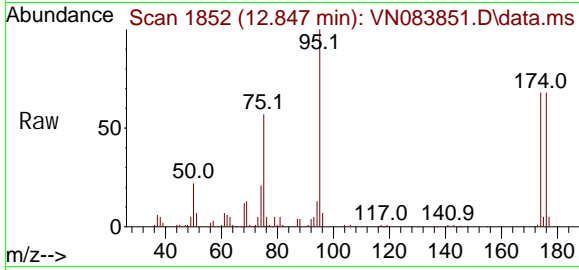
Tgt Ion: 98 Resp: 281013  
 Ion Ratio Lower Upper  
 98 100  
 100 65.6 52.0 78.0



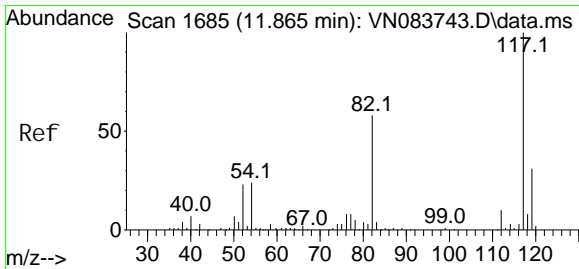
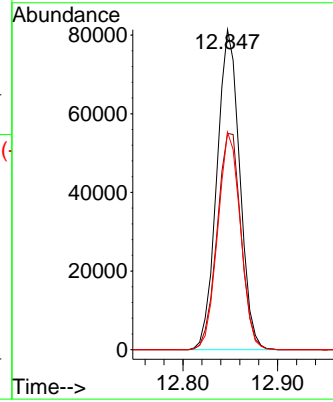
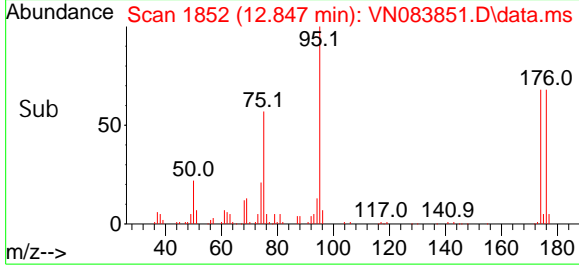


#62  
 4-Bromofluorobenzene  
 Concen: 60.088 ug/l  
 RT: 12.847 min Scan# 1852  
 Delta R.T. 0.000 min  
 Lab File: VN083851.D  
 Acq: 13 Sep 2024 04:13

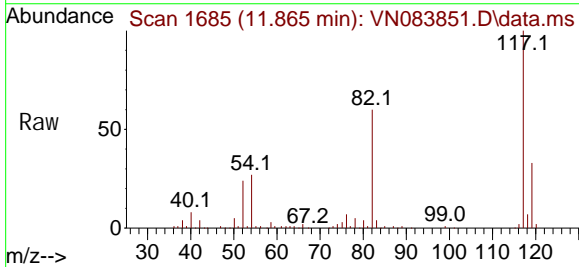
Instrument :  
 MSVOA\_N  
 ClientSampleId :  
 MW203D-20240909



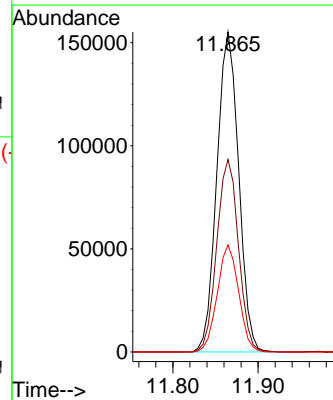
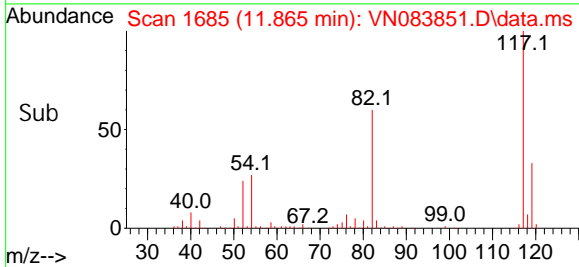
Tgt Ion: 95 Resp: 136415  
 Ion Ratio Lower Upper  
 95 100  
 174 70.6 0.0 139.8  
 176 67.6 0.0 131.4

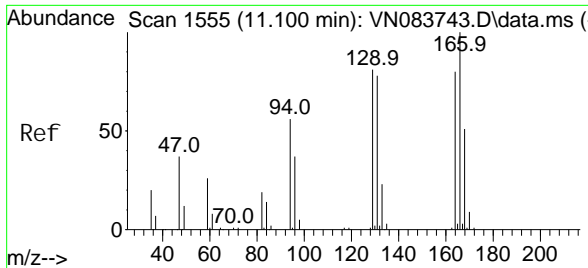


#63  
 Chlorobenzene-d5  
 Concen: 50.000 ug/l  
 RT: 11.865 min Scan# 1685  
 Delta R.T. 0.000 min  
 Lab File: VN083851.D  
 Acq: 13 Sep 2024 04:13



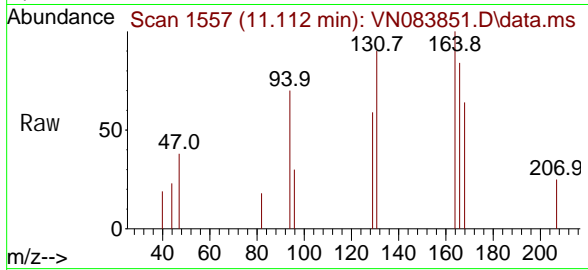
Tgt Ion: 117 Resp: 276381  
 Ion Ratio Lower Upper  
 117 100  
 82 60.2 47.4 71.0  
 119 33.5 26.3 39.5



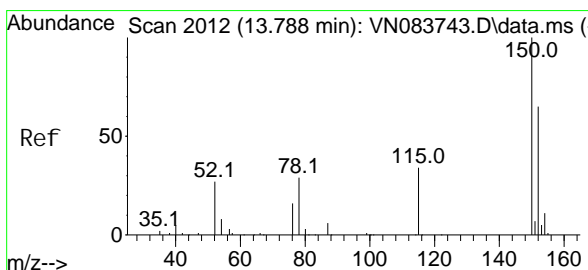
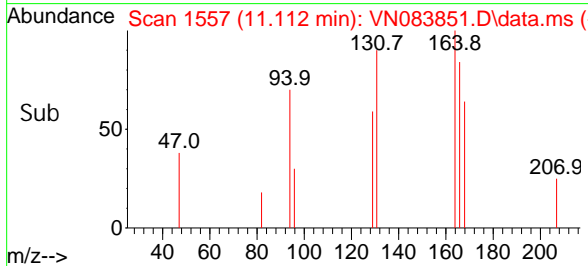
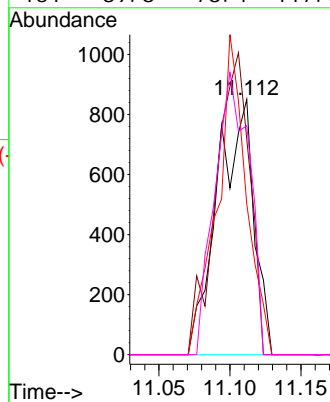


#64  
 Tetrachloroethene  
 Concen: 0.828 ug/l  
 RT: 11.112 min Scan# 11  
 Delta R.T. 0.012 min  
 Lab File: VN083851.D  
 Acq: 13 Sep 2024 04:13

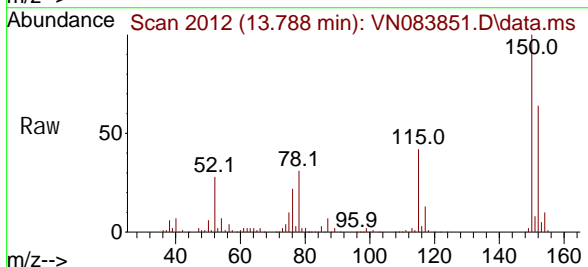
Instrument : MSVOA\_N  
 ClientSampleId : MW203D-20240909



Tgt Ion: 164 Resp: 1522  
 Ion Ratio Lower Upper  
 164 100  
 166 84.5 103.7 155.5#  
 129 59.1 79.9 119.9#  
 131 89.8 78.4 117.6



#72  
 1,4-Dichlorobenzene-d4  
 Concen: 50.000 ug/l  
 RT: 13.788 min Scan# 2012  
 Delta R.T. 0.000 min  
 Lab File: VN083851.D  
 Acq: 13 Sep 2024 04:13



Tgt Ion: 152 Resp: 136729  
 Ion Ratio Lower Upper  
 152 100  
 115 64.4 32.2 96.6  
 150 158.1 0.0 348.6

