

Data Path : Z:\voasrv\HPCHEM1\MSVOA_N\Data\VN091224\
 Data File : VN083860.D
 Acq On : 13 Sep 2024 07:48
 Operator : JC\MD
 Sample : P3957-15
 Misc : 5.0mL/MSVOA_N/WATER
 ALS Vial : 48 Sample Multiplier: 1

Instrument :
 MSVOA_N
 ClientSampleId :
 RE104D2-20240911

Quant Time: Sep 13 08:52:35 2024
 Quant Method : Z:\voasrv\HPCHEM1\MSVOA_N\methods\82N091024W.M
 Quant Title : SW846 8260
 QLast Update : Wed Sep 11 15:18:56 2024
 Response via : Initial Calibration

Compound	R.T.	QIon	Response	Conc	Units	Dev(Min)

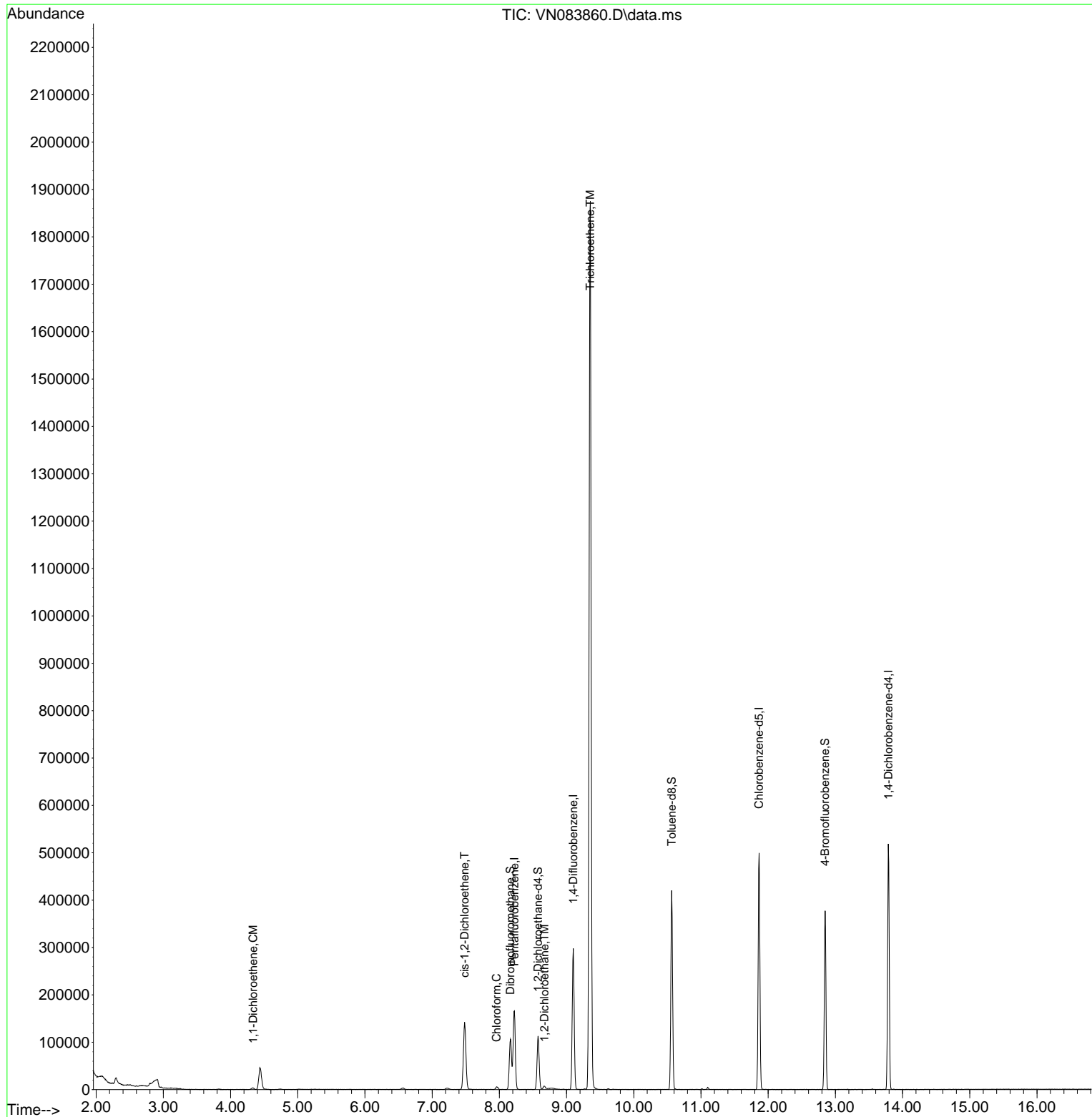
Internal Standards						
1) Pentafluorobenzene	8.224	168	114956	50.000	ug/l	0.00
34) 1,4-Difluorobenzene	9.100	114	240578	50.000	ug/l	0.00
63) Chlorobenzene-d5	11.865	117	273770	50.000	ug/l	0.00
72) 1,4-Dichlorobenzene-d4	13.788	152	130542	50.000	ug/l	0.00
System Monitoring Compounds						
33) 1,2-Dichloroethane-d4	8.577	65	94909	54.754	ug/l	0.00
Spiked Amount	50.000	Range	74 - 125	Recovery	=	109.500%
35) Dibromofluoromethane	8.165	113	74957	48.669	ug/l	0.00
Spiked Amount	50.000	Range	75 - 124	Recovery	=	97.340%
50) Toluene-d8	10.565	98	275567	51.756	ug/l	0.00
Spiked Amount	50.000	Range	86 - 113	Recovery	=	103.520%
62) 4-Bromofluorobenzene	12.847	95	127275	57.939	ug/l	0.00
Spiked Amount	50.000	Range	77 - 121	Recovery	=	115.880%
Target Compounds						
					Qvalue	
12) 1,1-Dichloroethene	4.336	96	2072	1.666	ug/l #	84
27) cis-1,2-Dichloroethene	7.483	96	81086	51.261	ug/l	92
30) Chloroform	7.959	83	5699	2.043	ug/l	90
42) 1,2-Dichloroethane	8.671	62	4907	1.882	ug/l	98
44) Trichloroethene	9.353	130	648776	401.529	ug/l	95

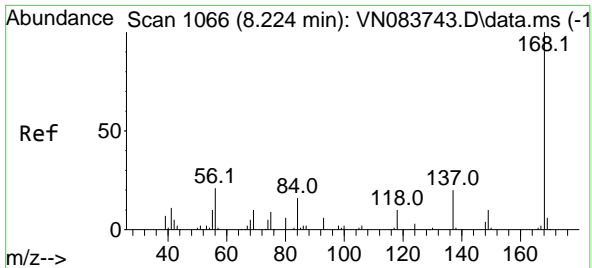
(#) = qualifier out of range (m) = manual integration (+) = signals summed

Data Path : Z:\voasrv\HPCHEM1\MSVOA_N\Data\VN091224\
 Data File : VN083860.D
 Acq On : 13 Sep 2024 07:48
 Operator : JC\MD
 Sample : P3957-15
 Misc : 5.0mL/MSVOA_N/WATER
 ALS Vial : 48 Sample Multiplier: 1

Instrument :
 MSVOA_N
 ClientSampleId :
 RE104D2-20240911

Quant Time: Sep 13 08:52:35 2024
 Quant Method : Z:\voasrv\HPCHEM1\MSVOA_N\methods\82N091024W.M
 Quant Title : SW846 8260
 QLast Update : Wed Sep 11 15:18:56 2024
 Response via : Initial Calibration

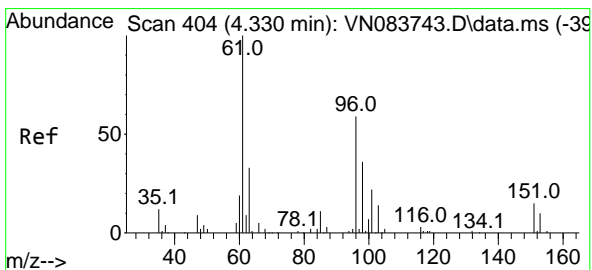
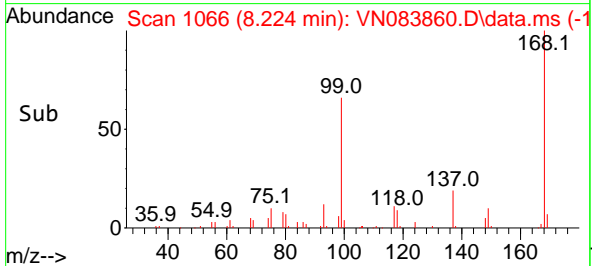
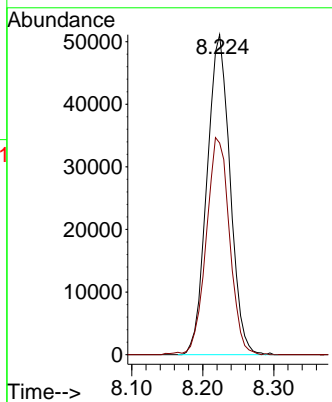
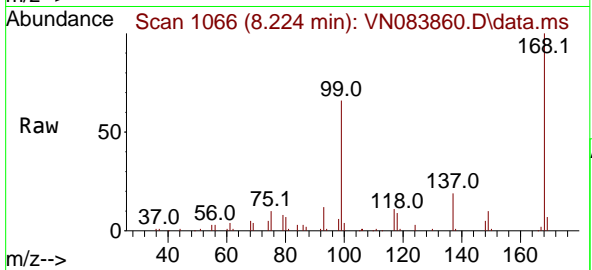




#1
 Pentafluorobenzene
 Concen: 50.000 ug/l
 RT: 8.224 min Scan# 1066
 Delta R.T. -0.000 min
 Lab File: VN083860.D
 Acq: 13 Sep 2024 07:48

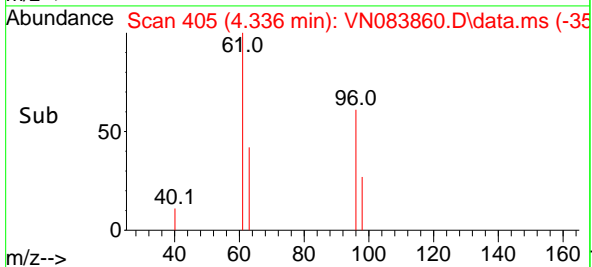
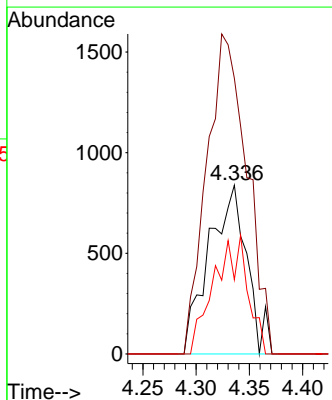
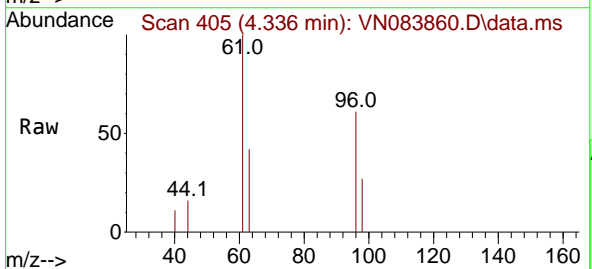
Instrument : MSVOA_N
 ClientSampleId : RE104D2-20240911

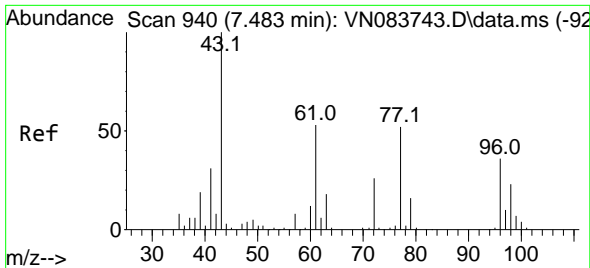
Tgt Ion:168 Resp: 114956
 Ion Ratio Lower Upper
 168 100
 99 66.1 54.2 81.2



#12
 1,1-Dichloroethene
 Concen: 1.666 ug/l
 RT: 4.336 min Scan# 405
 Delta R.T. 0.006 min
 Lab File: VN083860.D
 Acq: 13 Sep 2024 07:48

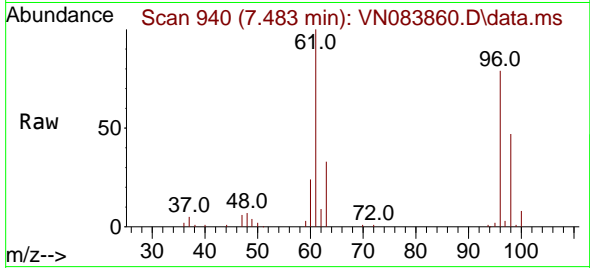
Tgt Ion: 96 Resp: 2072
 Ion Ratio Lower Upper
 96 100
 61 163.3 143.4 215.0
 98 44.0 52.7 79.1#





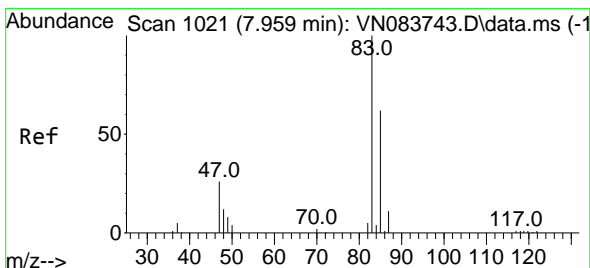
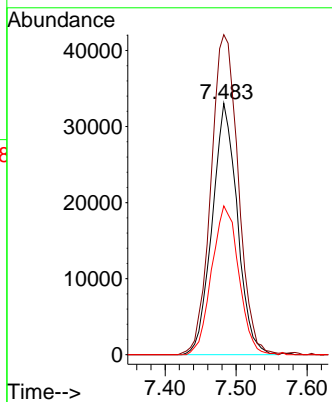
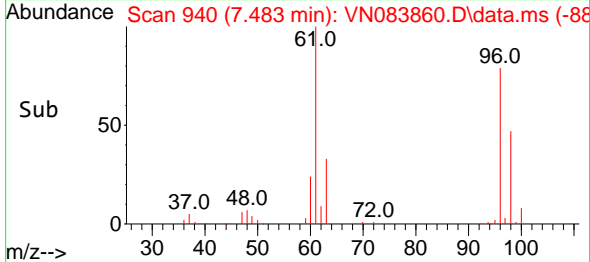
#27
 cis-1,2-Dichloroethene
 Concen: 51.261 ug/l
 RT: 7.483 min Scan# 94
 Delta R.T. 0.000 min
 Lab File: VN083860.D
 Acq: 13 Sep 2024 07:48

Instrument :
 MSVOA_N
 ClientSampleId :
 RE104D2-20240911

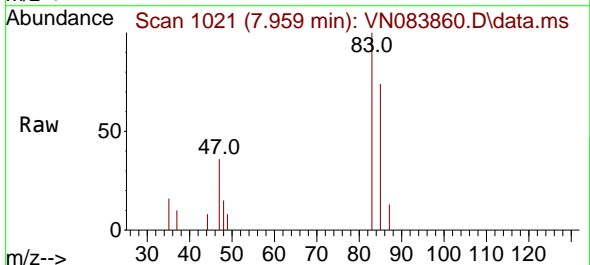


Tgt Ion: 96 Resp: 81086

Ion	Ratio	Lower	Upper
96	100		
61	138.7	0.0	306.2
98	63.7	0.0	128.6

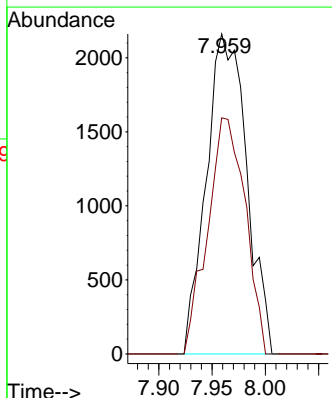
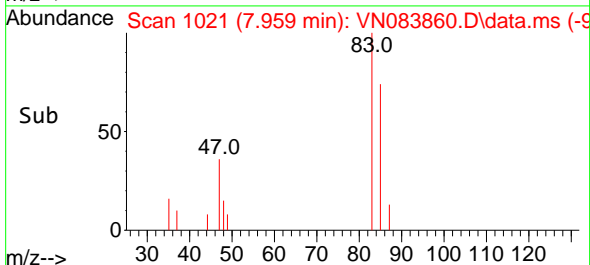


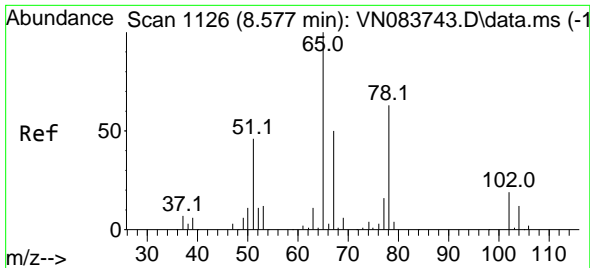
#30
 Chloroform
 Concen: 2.043 ug/l
 RT: 7.959 min Scan# 1021
 Delta R.T. 0.000 min
 Lab File: VN083860.D
 Acq: 13 Sep 2024 07:48



Tgt Ion: 83 Resp: 5699

Ion	Ratio	Lower	Upper
83	100		
85	73.8	52.8	79.2

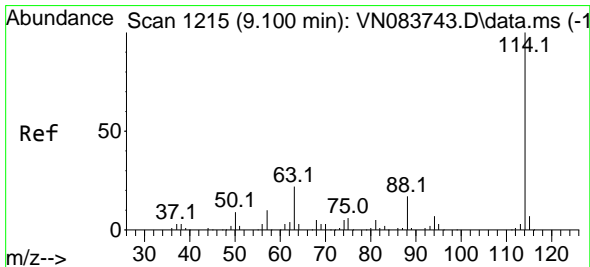
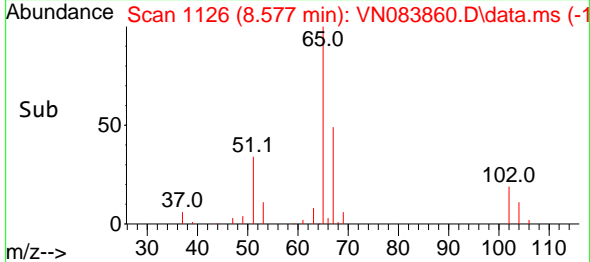
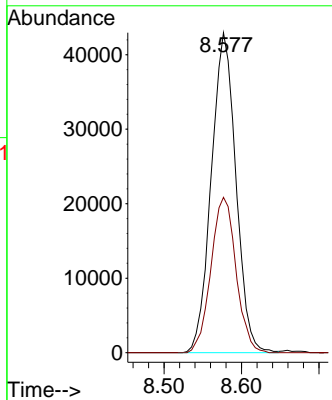
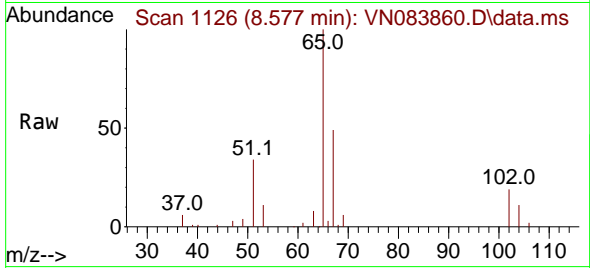




#33
 1,2-Dichloroethane-d4
 Concen: 54.754 ug/l
 RT: 8.577 min Scan# 1126
 Delta R.T. 0.000 min
 Lab File: VN083860.D
 Acq: 13 Sep 2024 07:48

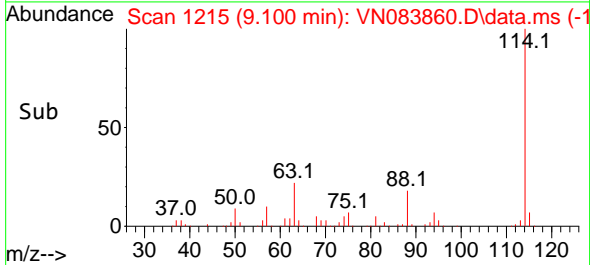
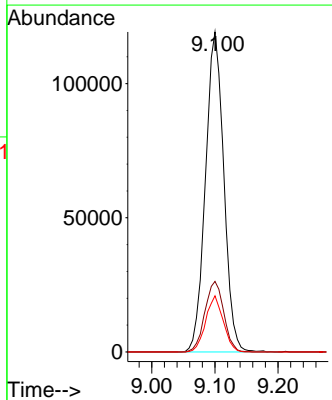
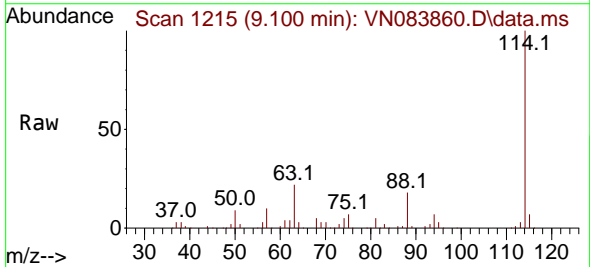
Instrument : MSVOA_N
 ClientSampleId : RE104D2-20240911

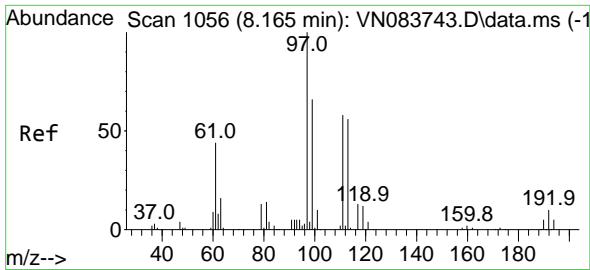
Tgt Ion: 65 Resp: 94909
 Ion Ratio Lower Upper
 65 100
 67 49.4 0.0 100.8



#34
 1,4-Difluorobenzene
 Concen: 50.000 ug/l
 RT: 9.100 min Scan# 1215
 Delta R.T. 0.000 min
 Lab File: VN083860.D
 Acq: 13 Sep 2024 07:48

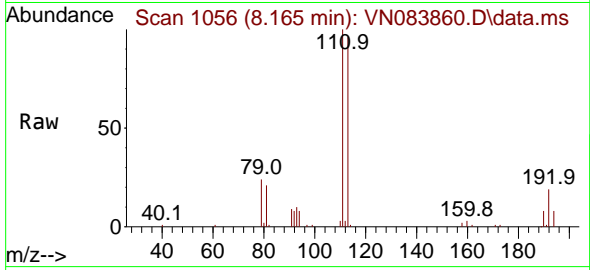
Tgt Ion: 114 Resp: 240578
 Ion Ratio Lower Upper
 114 100
 63 22.1 0.0 43.4
 88 17.5 0.0 32.6



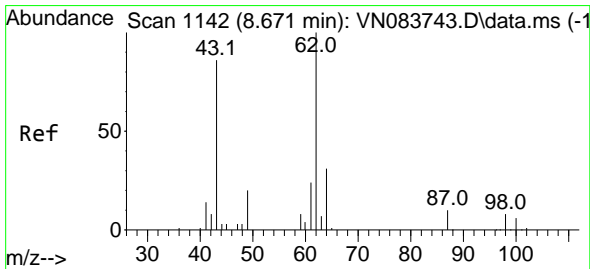
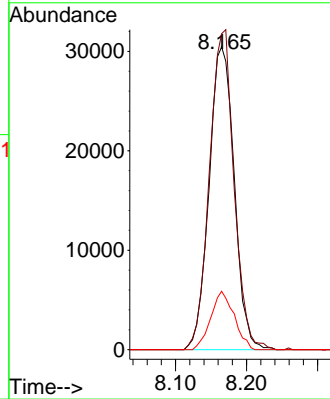
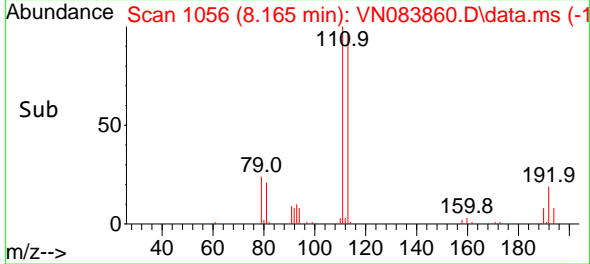


#35
 Dibromofluoromethane
 Concen: 48.669 ug/l
 RT: 8.165 min Scan# 1056
 Delta R.T. 0.000 min
 Lab File: VN083860.D
 Acq: 13 Sep 2024 07:48

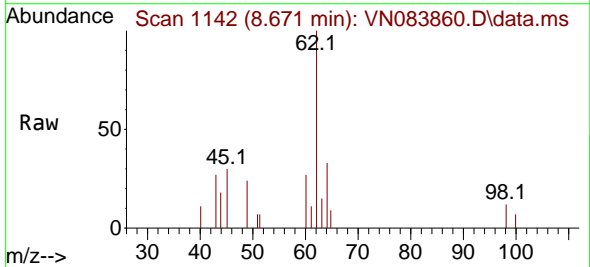
Instrument : MSVOA_N
 ClientSampleId : RE104D2-20240911



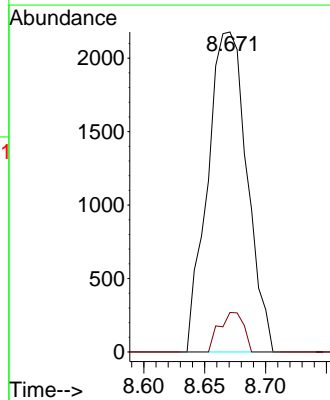
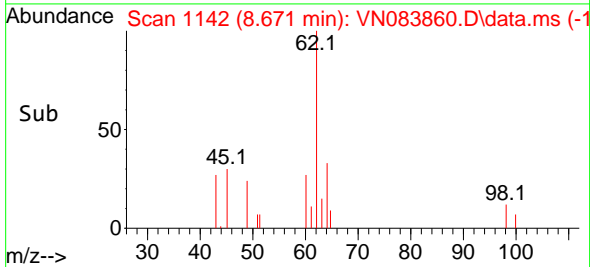
Tgt Ion: 113 Resp: 74957
 Ion Ratio Lower Upper
 113 100
 111 103.0 82.6 124.0
 192 17.9 14.3 21.5

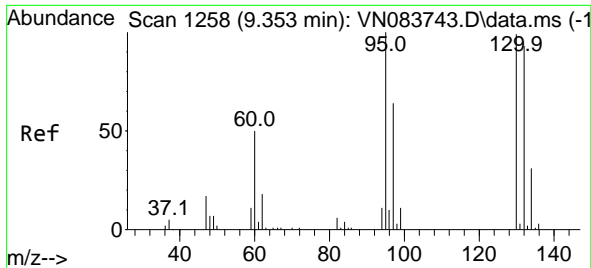


#42
 1,2-Dichloroethane
 Concen: 1.882 ug/l
 RT: 8.671 min Scan# 1142
 Delta R.T. 0.000 min
 Lab File: VN083860.D
 Acq: 13 Sep 2024 07:48



Tgt Ion: 62 Resp: 4907
 Ion Ratio Lower Upper
 62 100
 98 7.6 0.0 16.6

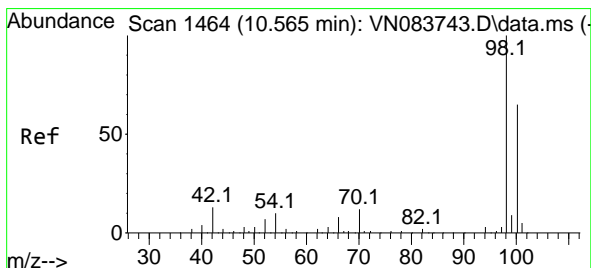
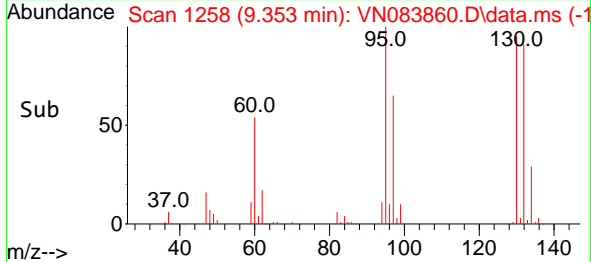
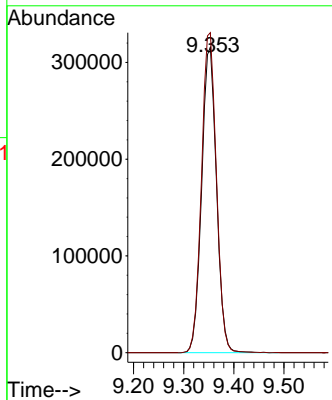
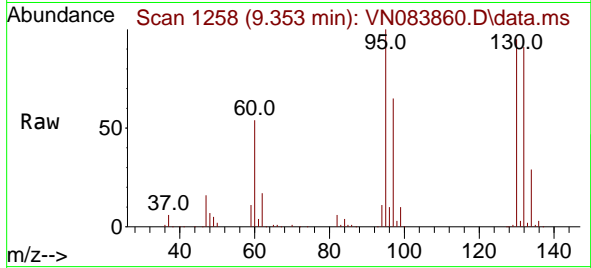




#44
 Trichloroethene
 Concen: 401.529 ug/l
 RT: 9.353 min Scan# 11
 Delta R.T. 0.000 min
 Lab File: VN083860.D
 Acq: 13 Sep 2024 07:48

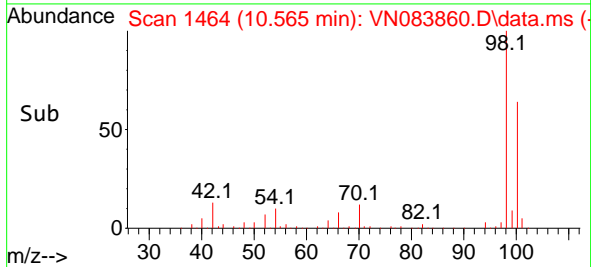
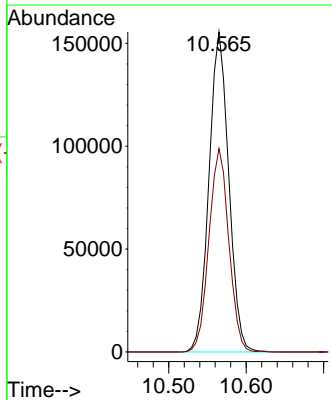
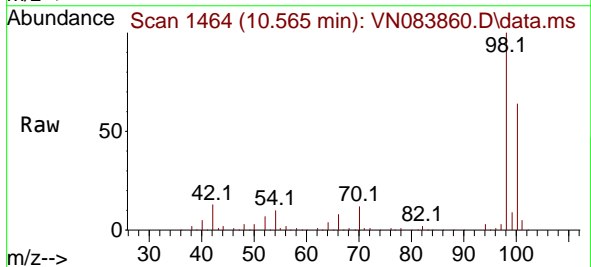
Instrument : MSVOA_N
 ClientSampleId : RE104D2-20240911

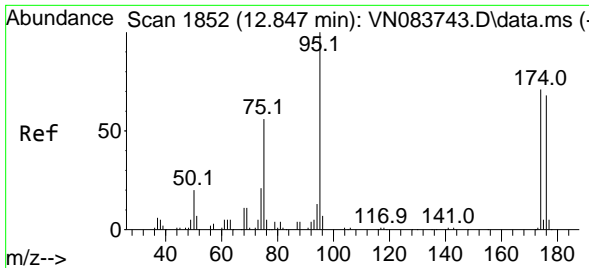
Tgt Ion:130 Resp: 648776
 Ion Ratio Lower Upper
 130 100
 95 104.8 0.0 200.4



#50
 Toluene-d8
 Concen: 51.756 ug/l
 RT: 10.565 min Scan# 1464
 Delta R.T. 0.000 min
 Lab File: VN083860.D
 Acq: 13 Sep 2024 07:48

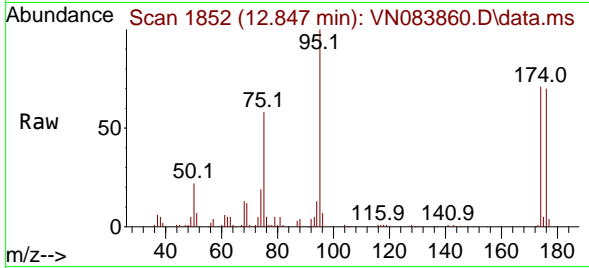
Tgt Ion: 98 Resp: 275567
 Ion Ratio Lower Upper
 98 100
 100 63.9 52.0 78.0



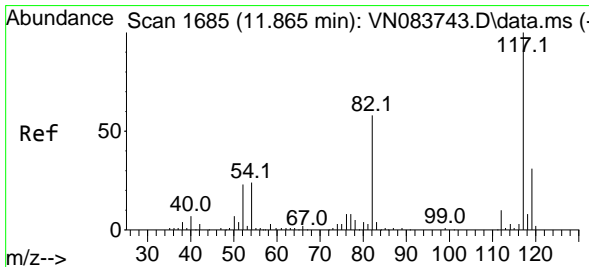
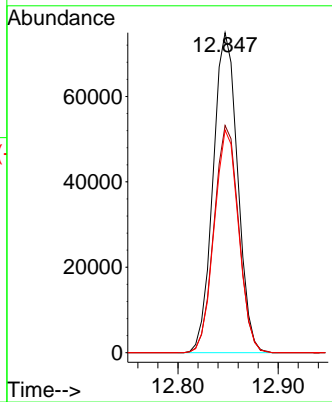
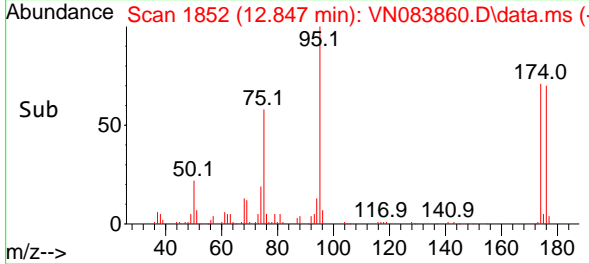


#62
 4-Bromofluorobenzene
 Concen: 57.939 ug/l
 RT: 12.847 min Scan# 1852
 Delta R.T. 0.000 min
 Lab File: VN083860.D
 Acq: 13 Sep 2024 07:48

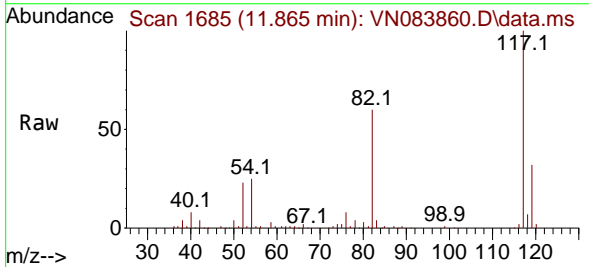
Instrument : MSVOA_N
 ClientSampleId : RE104D2-20240911



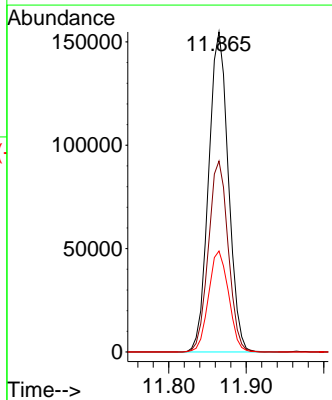
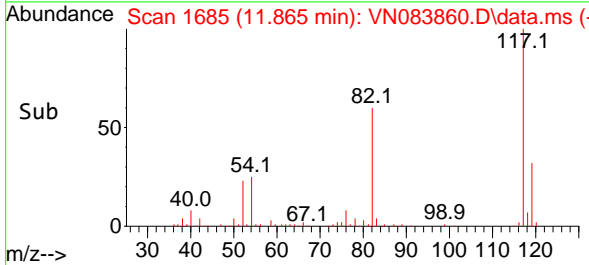
Tgt Ion: 95 Resp: 127275
 Ion Ratio Lower Upper
 95 100
 174 71.6 0.0 139.8
 176 69.5 0.0 131.4

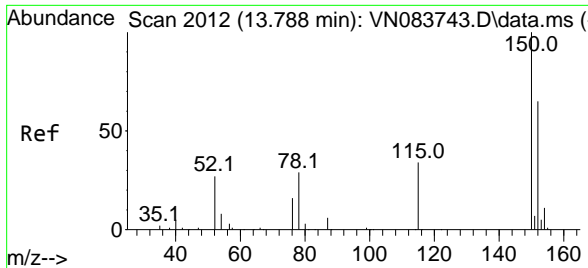


#63
 Chlorobenzene-d5
 Concen: 50.000 ug/l
 RT: 11.865 min Scan# 1685
 Delta R.T. 0.000 min
 Lab File: VN083860.D
 Acq: 13 Sep 2024 07:48



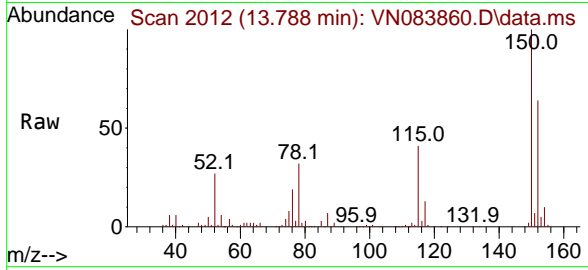
Tgt Ion: 117 Resp: 273770
 Ion Ratio Lower Upper
 117 100
 82 59.7 47.4 71.0
 119 31.6 26.3 39.5





#72
 1,4-Dichlorobenzene-d4
 Concen: 50.000 ug/l
 RT: 13.788 min Scan# 20
 Delta R.T. 0.000 min
 Lab File: VN083860.D
 Acq: 13 Sep 2024 07:48

Instrument : MSVOA_N
 ClientSampleId : RE104D2-20240911



Tgt Ion:152 Resp: 130542

Ion	Ratio	Lower	Upper
152	100		
115	63.5	32.2	96.6
150	156.7	0.0	348.6

