

Data Path : Z:\VOASRV\HPCHEM1\MSVOA N\DATA\VN091318\
 Data File : VN051165.D
 Acq On : 13 Sep 2018 12:18
 Operator : MD\SY
 Sample : PB112798ZHE#03
 Misc : 5.00mL/MSVOA N/WATER
 ALS Vial : 10 Sample Multiplier: 1

Instrument :
 MSVOA_N
 ClientSampleId :
 PB112798ZHE#03

Quant Time: Sep 14 01:06:02 2018
 Quant Method : Z:\VOASRV\HPCHEM1\MSVOA_N\METHODS\82N091018W.M
 Quant Title : SW846 8260
 QLast Update : Tue Sep 11 02:27:09 2018
 Response via : Initial Calibration

Internal Standards	R.T.	QIon	Response	Conc	Units	Dev(Min)
1) Pentafluorobenzene	7.67	168	580547	50.00	ug/l	0.00
34) 1,4-Difluorobenzene	8.59	114	944026	50.00	ug/l	0.00
63) Chlorobenzene-d5	11.41	117	808378	50.00	ug/l	0.00
72) 1,4-Dichlorobenzene-d4	13.35	152	266758	50.00	ug/l	0.00

System Monitoring Compounds

33) 1,2-Dichloroethane-d4	8.03	65	364431	56.41	ug/l	0.00
Spiked Amount	50.000		Recovery	=	112.82%	
35) Dibromofluoromethane	7.59	113	353112	49.78	ug/l	0.00
Spiked Amount	50.000		Recovery	=	99.56%	
50) Toluene-d8	10.09	98	1286425	47.79	ug/l	0.00
Spiked Amount	50.000		Recovery	=	95.58%	
62) 4-Bromofluorobenzene	12.40	95	344433	38.68	ug/l	0.00
Spiked Amount	50.000		Recovery	=	77.36%	

Target Compounds

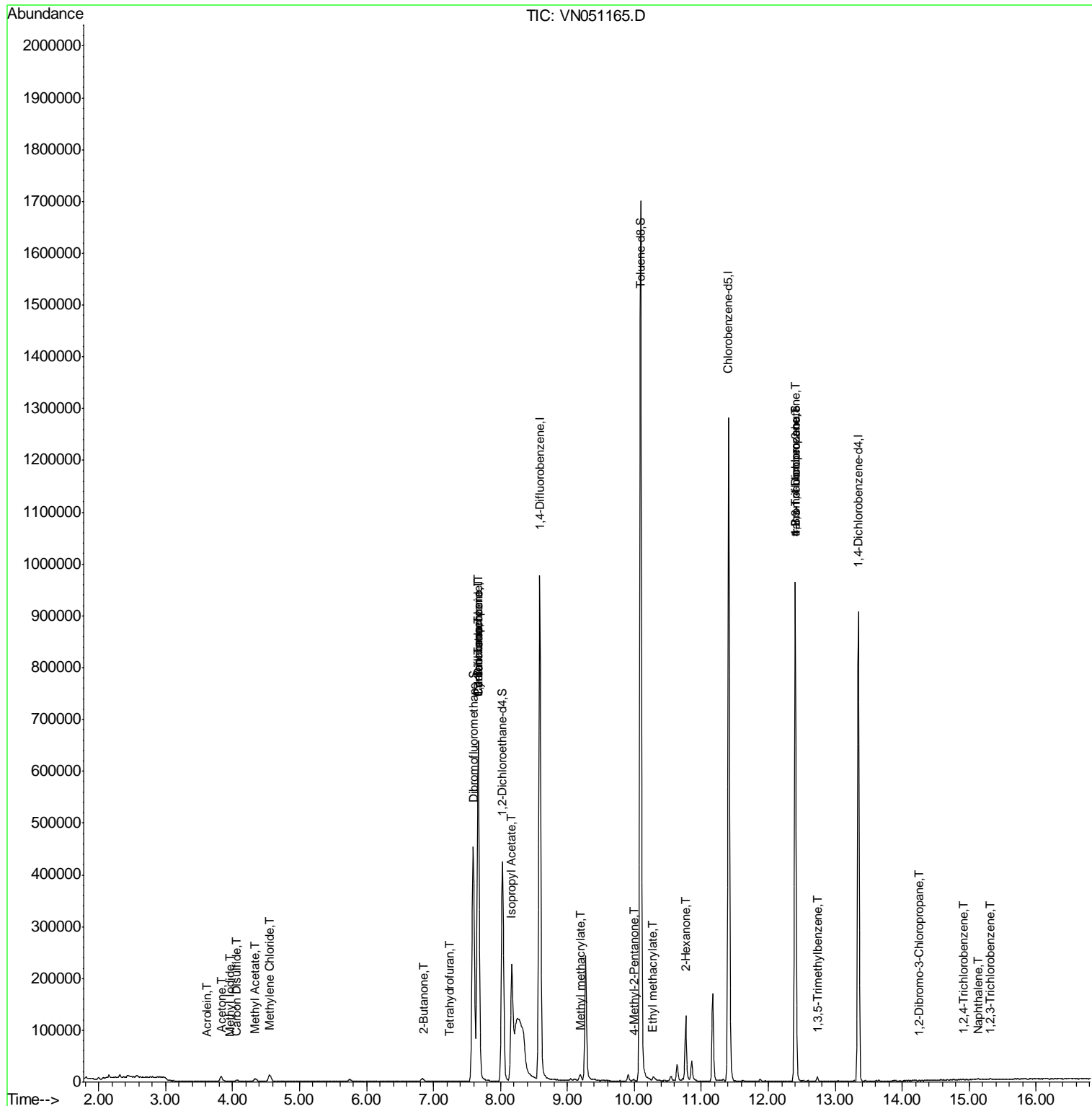
						Qvalue
3) Chloromethane	2.06	50	2324	Below Cal		94
5) Bromomethane	2.57	94	2269	Below Cal		90
10) Methyl Iodide	3.96	142	469	5.70	ug/l #	44
13) Acrolein	3.62	56	60	24.37	ug/l #	13
16) Acetone	3.83	43	16858	4.83	ug/l	97
17) Carbon Disulfide	4.05	76	2455	0.25	ug/l #	76
18) Methyl Acetate	4.34	43	10451	2.02	ug/l #	81
20) Methylene Chloride	4.55	84	10203	1.43	ug/l	96
25) 2-Butanone	6.86	43	1898	0.75	ug/l #	86
29) Tetrahydrofuran	7.22	42	759	0.48	ug/l #	47
31) Cyclohexane	7.67	56	9700	0.69	ug/l #	1
36) 1,1-Dichloropropene	7.67	75	37809	3.65	ug/l #	48
38) Carbon Tetrachloride	7.67	117	49343	4.84	ug/l #	16
43) Isopropyl Acetate	8.17	43	292864	27.65	ug/l #	84
48) Methyl methacrylate	9.18	41	7291	1.41	ug/l #	17
51) 4-Methyl-2-Pentanone	9.98	43	2324	0.40	ug/l	94
56) Ethyl methacrylate	10.27	69	239	2.48	ug/l #	36
59) 2-Hexanone	10.77	43	17067	4.30	ug/l	62
76) 1,2,3-Trichloropropane	12.40	75	156440	37.45	ug/l #	100
80) 1,3,5-Trimethylbenzene	12.73	105	3904	0.22	ug/l	92
81) trans-1,4-Dichloro-2-buten	12.40	75	156440	111.38	ug/l #	15
92) 1,2-Dibromo-3-Chloropropan	14.26	75	128	0.82	ug/l #	1
93) 1,2,4-Trichlorobenzene	14.91	180	375	4.05	ug/l #	51
94) Hexachlorobutadiene	15.01	225	499	Below Cal	#	22
95) Naphthalene	15.14	128	1558	5.48	ug/l #	76
96) 1,2,3-Trichlorobenzene	15.32	180	714	3.09	ug/l #	85

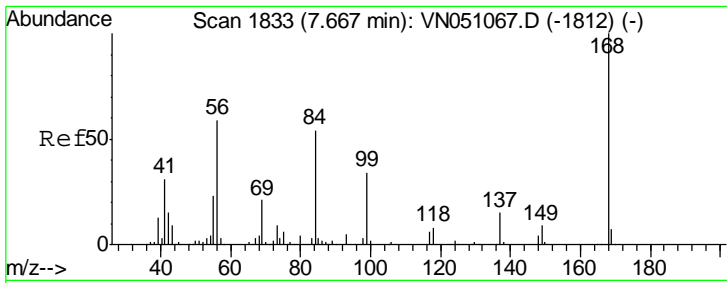
(#) = qualifier out of range (m) = manual integration (+) = signals summed

Data Path : Z:\VOASRV\HPCHEM1\MSVOA N\DATA\VN091318\
 Data File : VN051165.D
 Acq On : 13 Sep 2018 12:18
 Operator : MD\SY
 Sample : PB112798ZHE#03
 Misc : 5.00mL/MSVOA N/WATER
 ALS Vial : 10 Sample Multiplier: 1

Instrument :
 MSVOA_N
 Client Sample Id :
 PB112798ZHE#03

Quant Time: Sep 14 01:06:02 2018
 Quant Method : Z:\VOASRV\HPCHEM1\MSVOA_N\METHODS\82N091018W.M
 Quant Title : SW846 8260
 QLast Update : Tue Sep 11 02:27:09 2018
 Response via : Initial Calibration

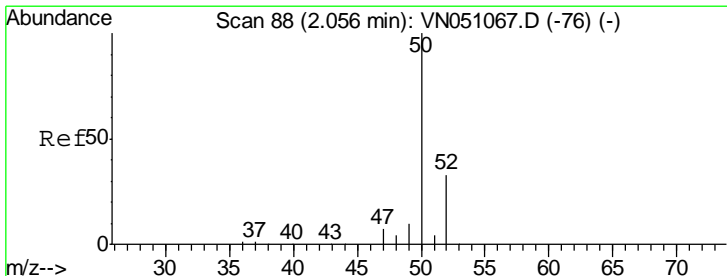
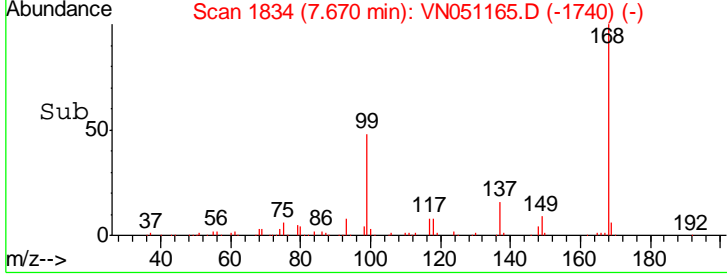
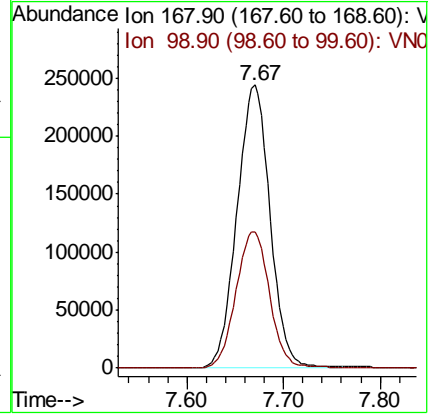
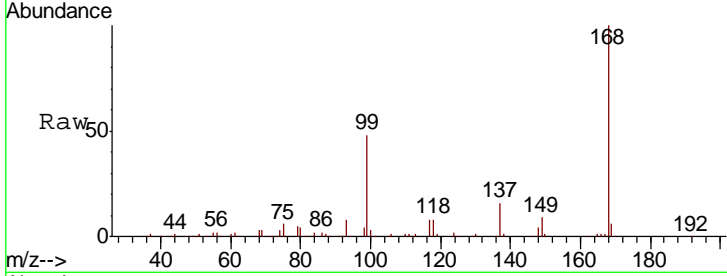




#1
 Pentafluorobenzene
 Concen: 50.00 ug/l
 RT: 7.67 min Scan# 1834
 Delta R.T. 0.00 min
 Lab File: VN051165.D
 Acq: 13 Sep 2018 12:18

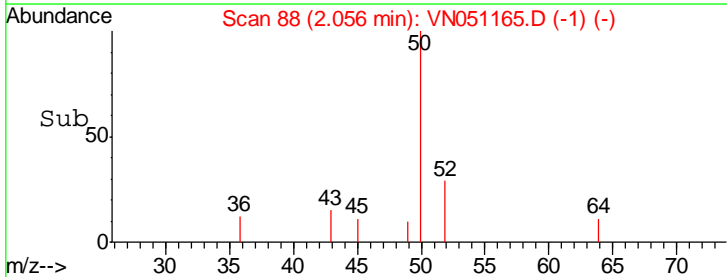
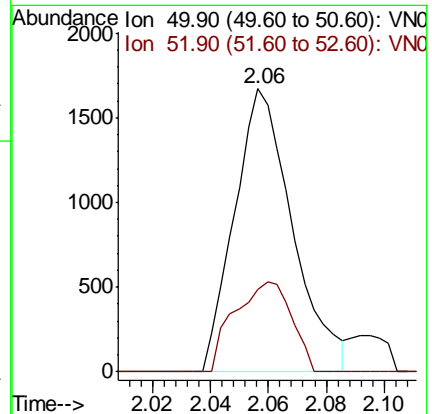
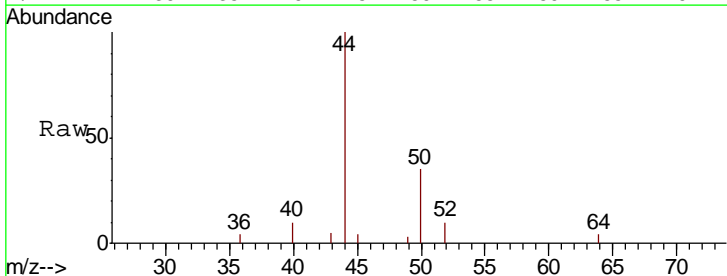
Instrument : MSVOA_N
 ClientSampleID : PB112798ZHE#03

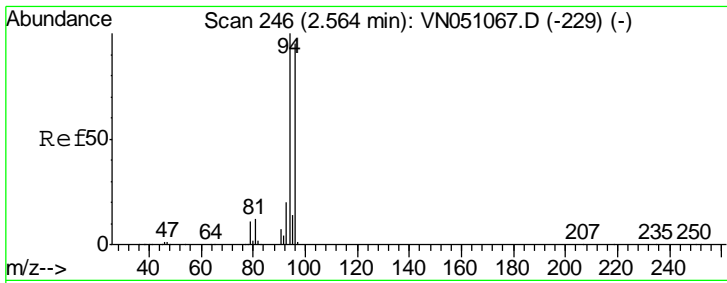
Tot Ion: 168 Resp: 580547
 Ion Ratio Lower Upper
 168 100
 99 48.1 38.3 57.5



#3
 Chloromethane
 Concen: Below Cal
 RT: 2.06 min Scan# 88
 Delta R.T. 0.00 min
 Lab File: VN051165.D
 Acq: 13 Sep 2018 12:18

Tgt Ion: 50 Resp: 2324
 Ion Ratio Lower Upper
 50 100
 52 29.0 26.0 39.0

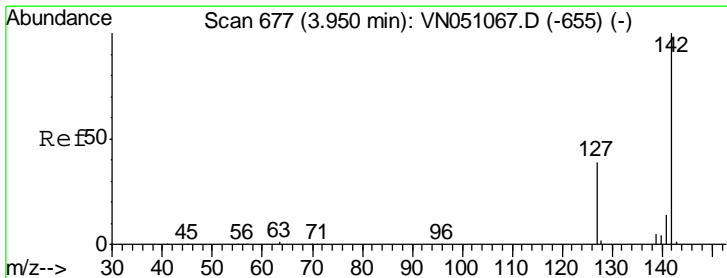
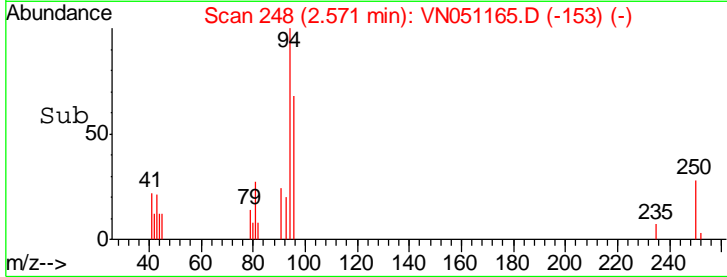
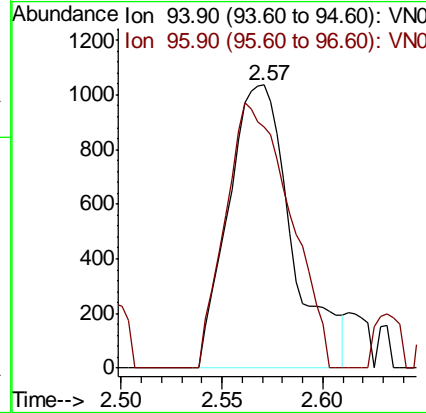
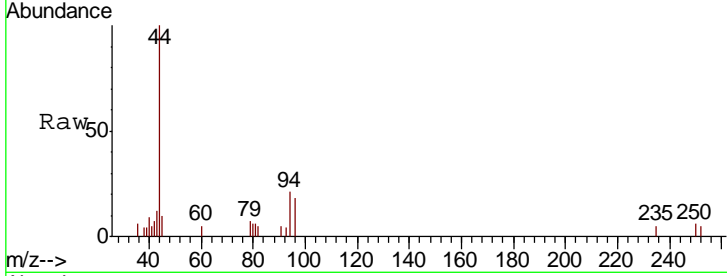




#5
 Bromomethane
 Concen: Below Cal
 RT: 2.57 min Scan# 248
 Delta R.T. 0.01 min
 Lab File: VN051165.D
 Acq: 13 Sep 2018 12:18

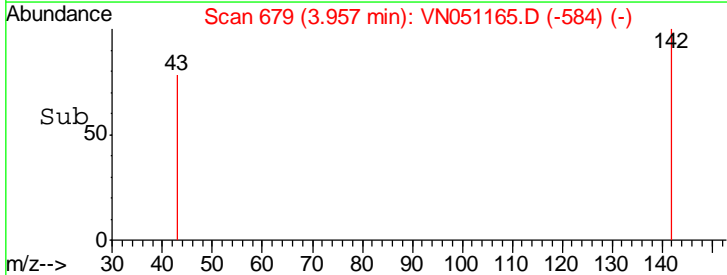
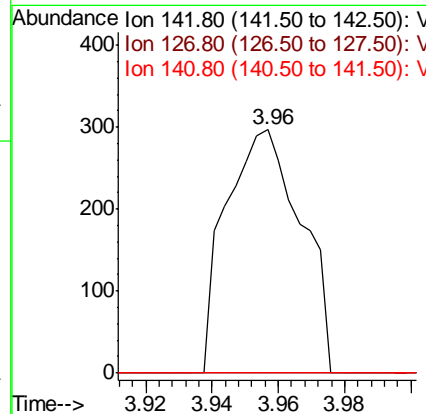
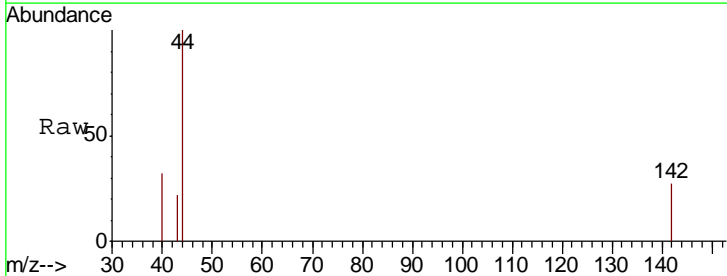
Instrument : MSVOA_N
 ClientSampled : PB112798ZHE#03

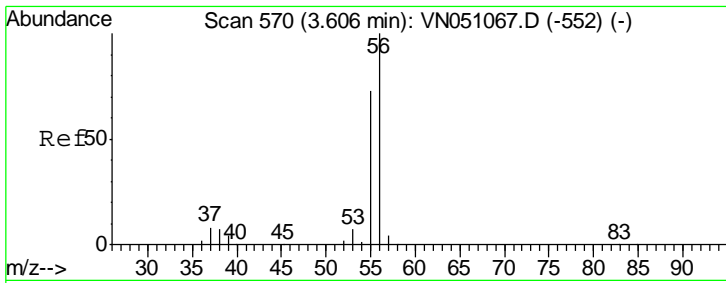
Tgt Ion: 94 Resp: 2269
 Ion Ratio Lower Upper
 94 100
 96 85.1 75.9 113.9



#10
 Methyl Iodide
 Concen: 5.70 ug/l
 RT: 3.96 min Scan# 679
 Delta R.T. 0.01 min
 Lab File: VN051165.D
 Acq: 13 Sep 2018 12:18

Tgt Ion: 142 Resp: 469
 Ion Ratio Lower Upper
 142 100
 127 0.0 31.0 46.4#
 141 0.0 11.3 16.9#

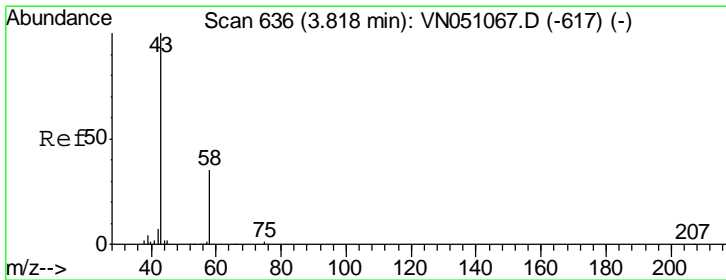
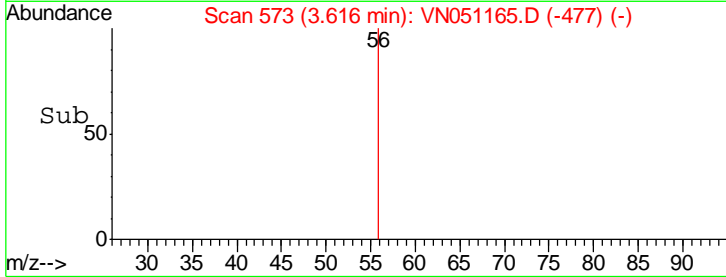
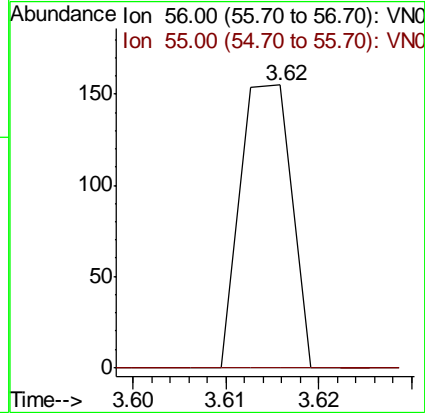
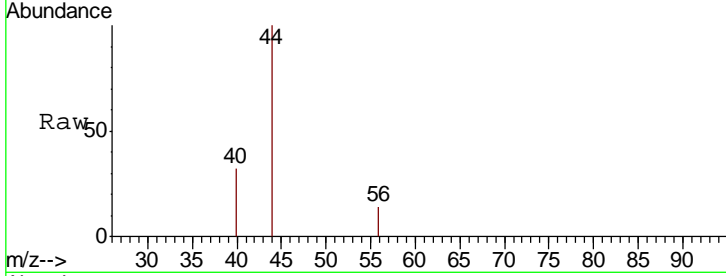




#13
 Acrolein
 Concen: 24.37 ug/l
 RT: 3.62 min Scan# 573
 Delta R.T. 0.01 min
 Lab File: VN051165.D
 Acq: 13 Sep 2018 12:18

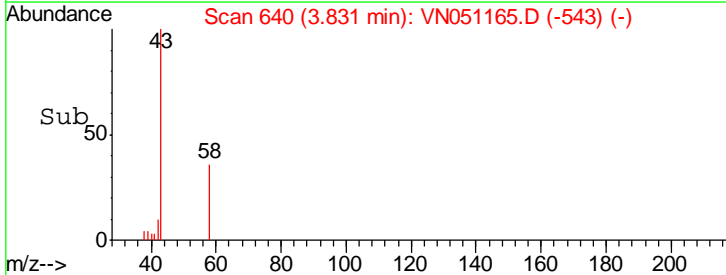
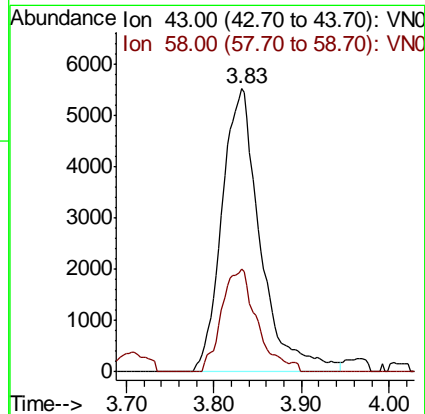
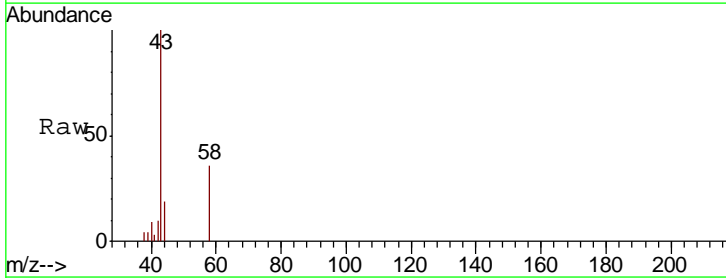
Instrument : MSVOA_N
 ClientSampleID : PB112798ZHE#03

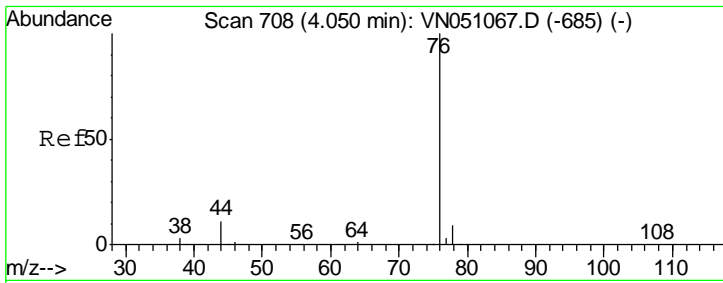
Tgt Ion	Resp	Lower	Upper
56	100		
55	0.0	58.0	87.0#



#16
 Acetone
 Concen: 4.83 ug/l
 RT: 3.83 min Scan# 640
 Delta R.T. 0.01 min
 Lab File: VN051165.D
 Acq: 13 Sep 2018 12:18

Tgt Ion	Resp	Lower	Upper
43	100		
58	36.2	27.8	41.6

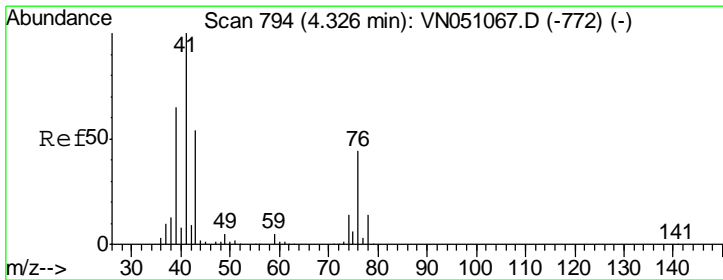
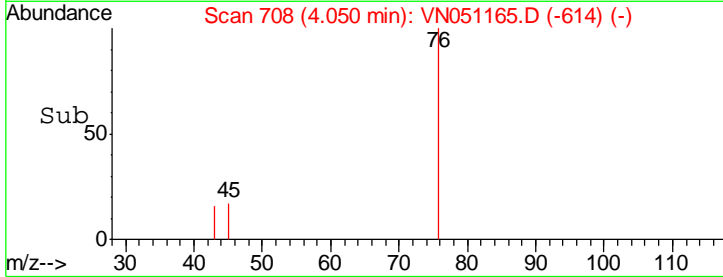
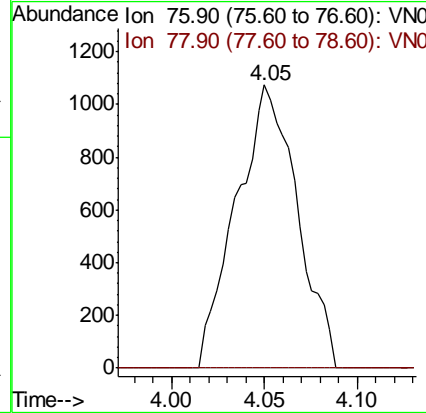
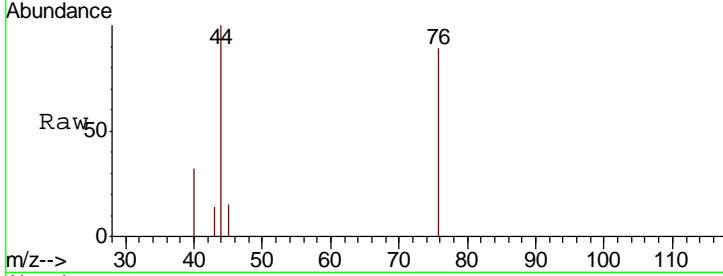




#17
 Carbon Disulfide
 Concen: 0.25 ug/l
 RT: 4.05 min Scan# 708
 Delta R.T. 0.00 min
 Lab File: VN051165.D
 Acq: 13 Sep 2018 12:18

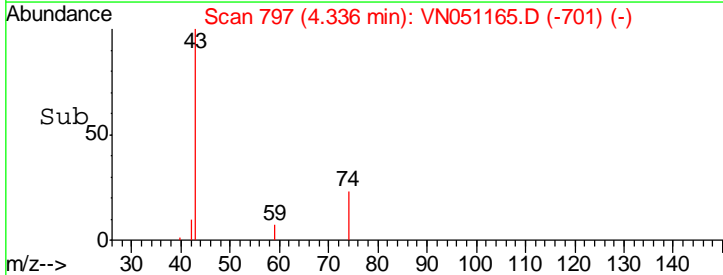
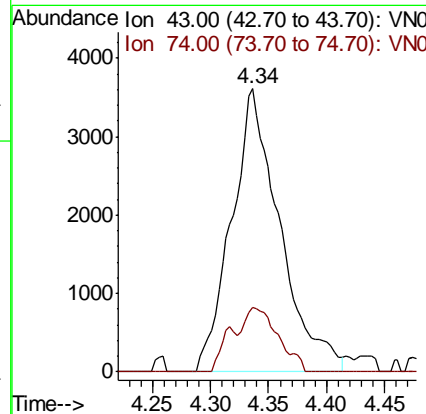
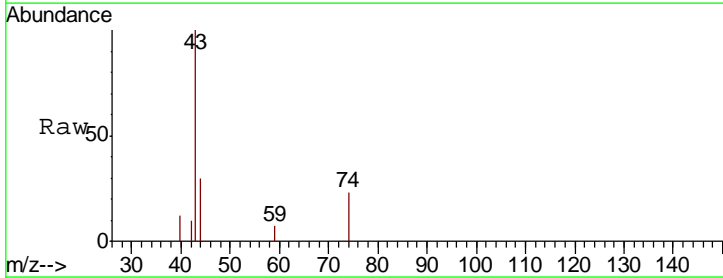
Instrument :
 MSVOA_N
ClientSampled :
 PB112798ZHE#03

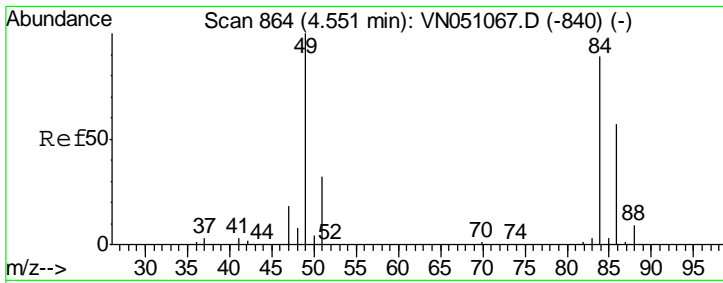
Tgt Ion	Resp	Lower	Upper
76	100		
78	0.0	7.0	10.6#



#18
 Methyl Acetate
 Concen: 2.02 ug/l
 RT: 4.34 min Scan# 797
 Delta R.T. 0.01 min
 Lab File: VN051165.D
 Acq: 13 Sep 2018 12:18

Tgt Ion	Resp	Lower	Upper
43	100		
74	16.3	20.7	31.1#

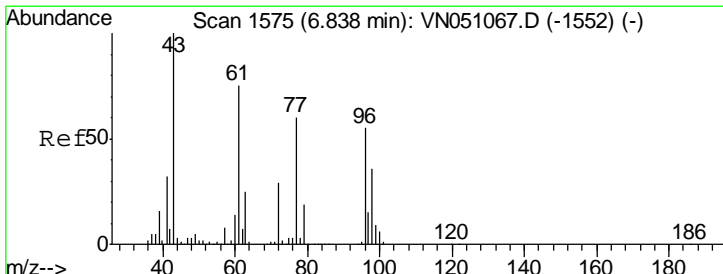
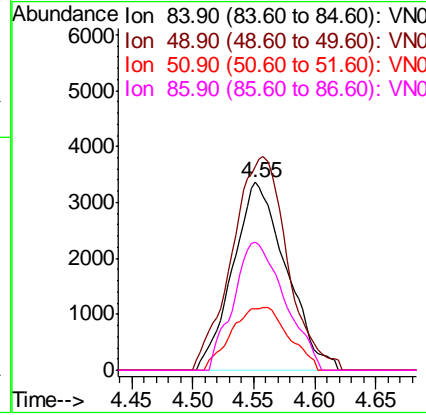
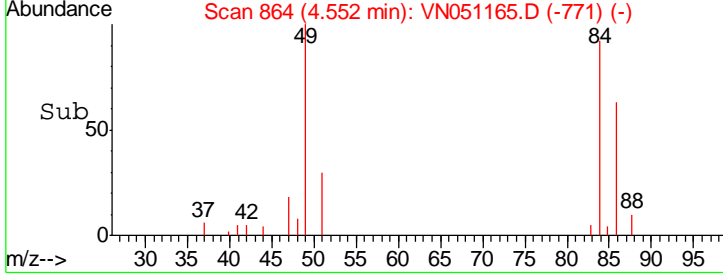
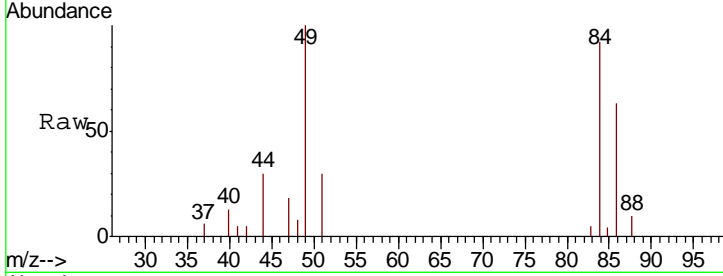




#20
 Methylene Chloride
 Concen: 1.43 ug/l
 RT: 4.55 min Scan# 864
 Delta R.T. 0.00 min
 Lab File: VN051165.D
 Acq: 13 Sep 2018 12:18

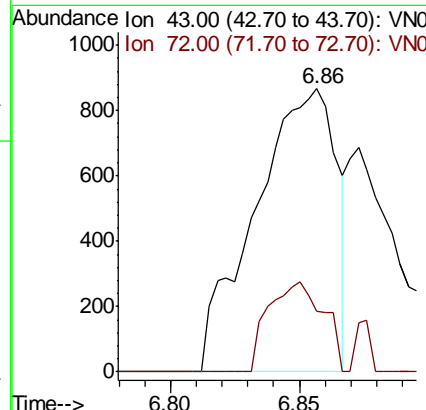
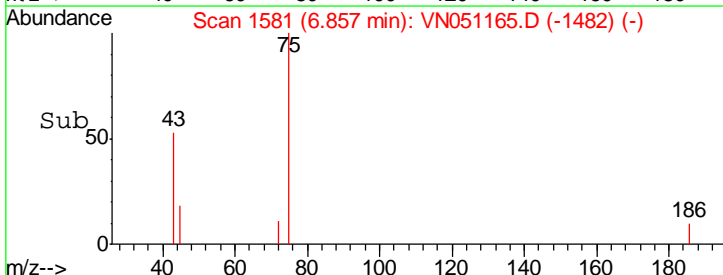
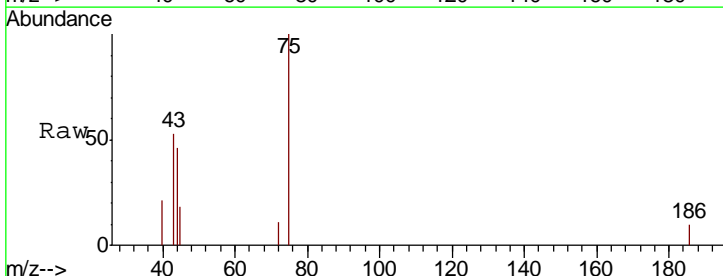
Instrument :
 MSVOA_N
 ClientSampleId :
 PB112798ZHE#03

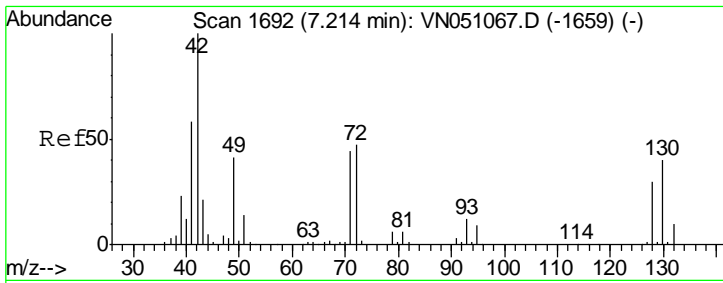
Tgt Ion	Resp	Lower	Upper
84	10203		
49	108.2	90.2	135.2
51	32.7	28.4	42.6
86	68.1	51.8	77.8



#25
 2-Butanone
 Concen: 0.75 ug/l
 RT: 6.86 min Scan# 1581
 Delta R.T. 0.02 min
 Lab File: VN051165.D
 Acq: 13 Sep 2018 12:18

Tgt Ion	Resp	Lower	Upper
43	1898		
72	21.2	23.0	34.6#

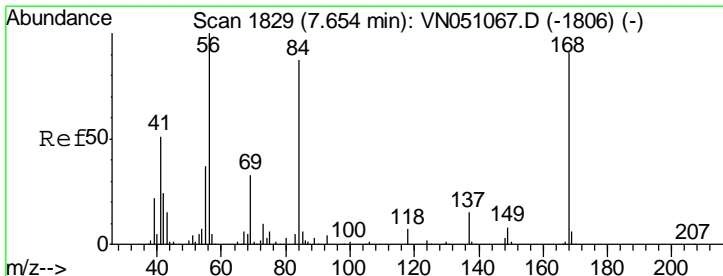
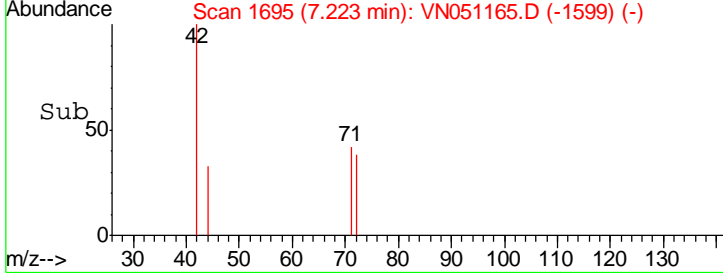
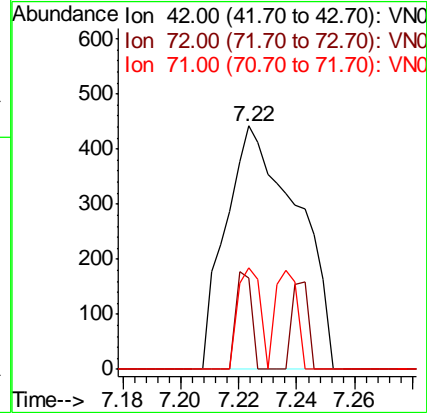
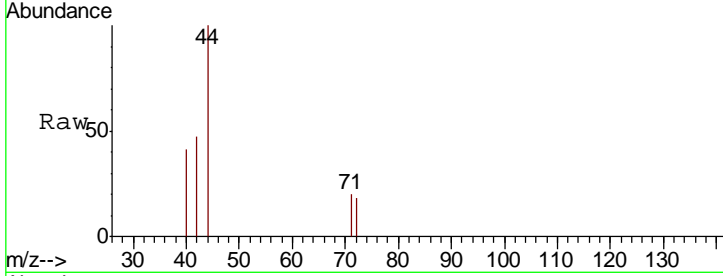




#29
 Tetrahydrofuran
 Concen: 0.48 ug/l
 RT: 7.22 min Scan# 1695
 Delta R.T. 0.01 min
 Lab File: VN051165.D
 Acq: 13 Sep 2018 12:18

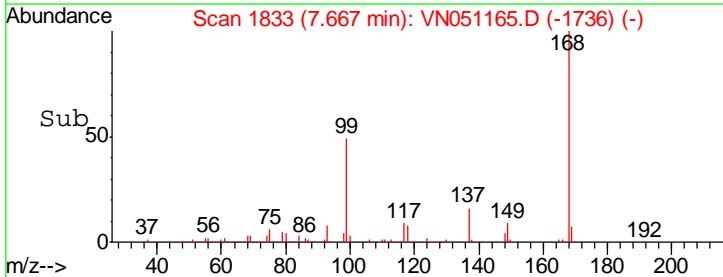
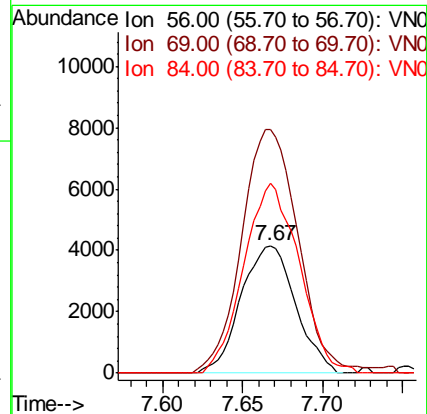
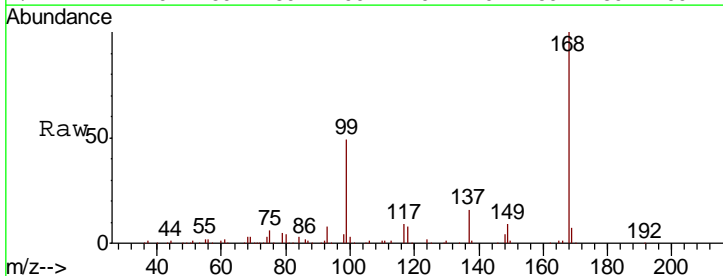
Instrument :
 MSVOA_N
 ClientSampleId :
 PB112798ZHE#03

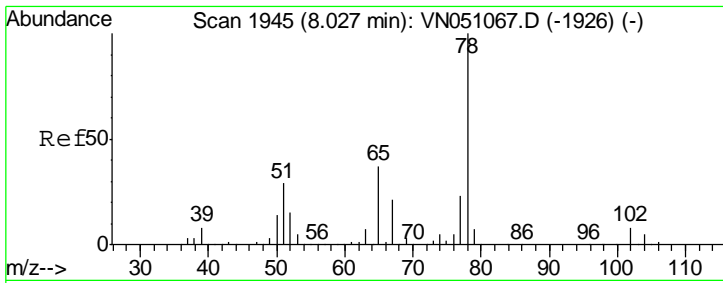
Tgt Ion	Resp	Lower	Upper
42	100		
72	8.7	37.4	56.0#
71	12.8	34.7	52.1#



#31
 Cyclohexane
 Concen: 0.69 ug/l
 RT: 7.67 min Scan# 1833
 Delta R.T. 0.01 min
 Lab File: VN051165.D
 Acq: 13 Sep 2018 12:18

Tgt Ion	Resp	Lower	Upper
56	100		
69	191.5	26.3	39.5#
84	149.8	69.4	104.0#

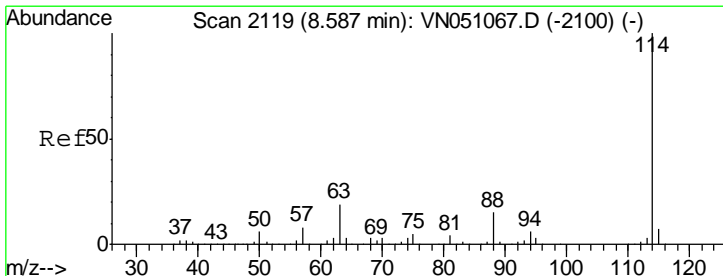
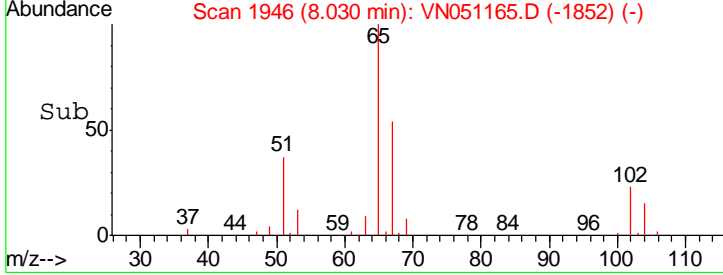
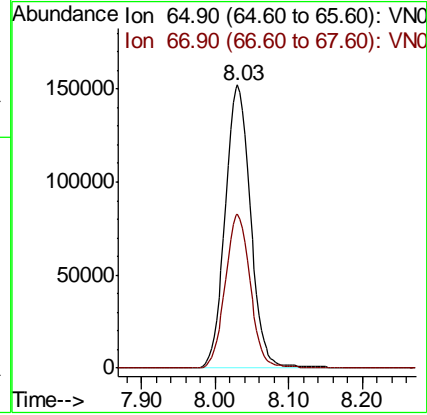
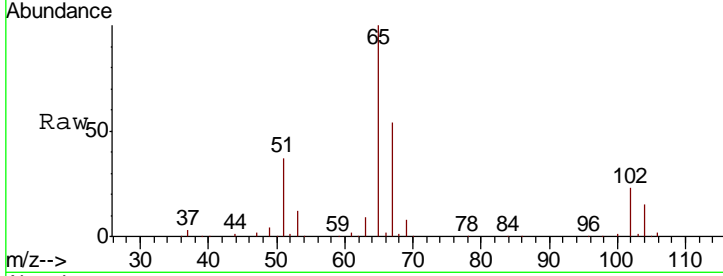




#33
 1,2-Dichloroethane-d4
 Concen: 56.41 ug/l
 RT: 8.03 min Scan# 1946
 Delta R.T. 0.00 min
 Lab File: VN051165.D
 Acq: 13 Sep 2018 12:18

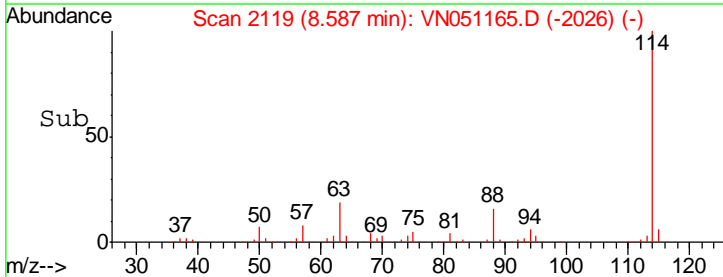
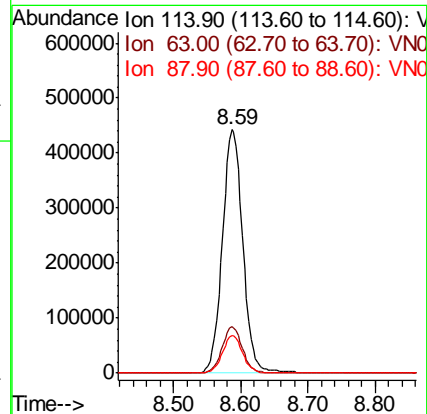
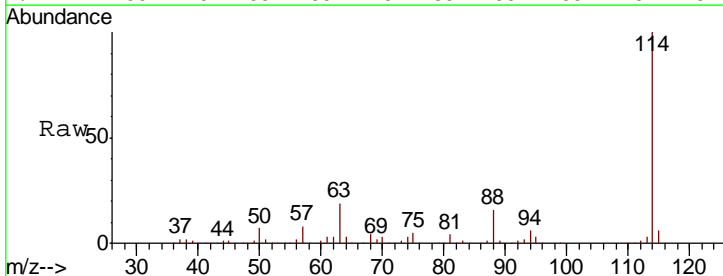
Instrument :
 MSVOA_N
 ClientSampleId :
 PB112798ZHE#03

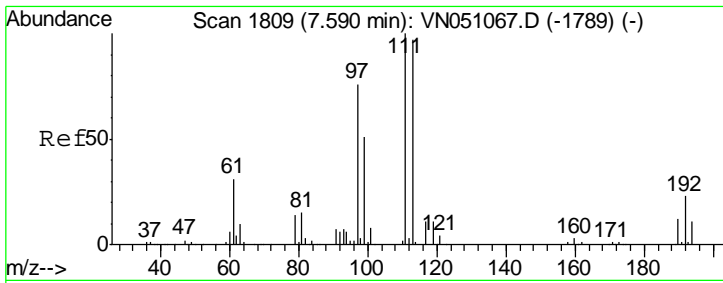
Tgt Ion	Resp	Lower	Upper
65	100		
67	53.7	0.0	112.0



#34
 1,4-Difluorobenzene
 Concen: 50.00 ug/l
 RT: 8.59 min Scan# 2119
 Delta R.T. 0.00 min
 Lab File: VN051165.D
 Acq: 13 Sep 2018 12:18

Tgt Ion	Resp	Lower	Upper
114	100		
63	18.9	0.0	37.8
88	15.6	0.0	30.8

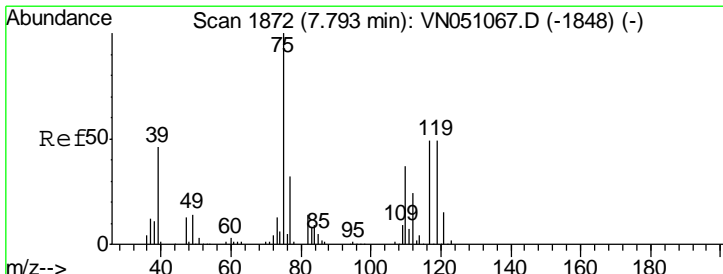
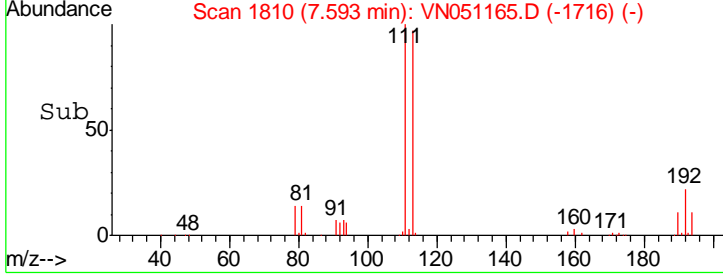
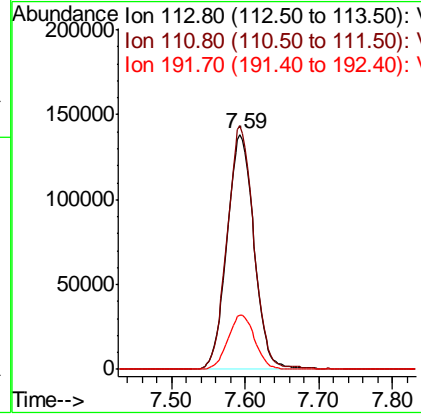
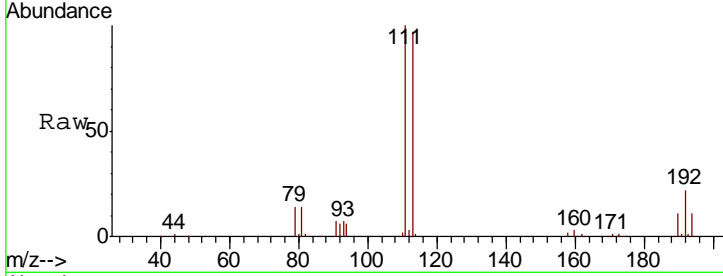




#35
 Dibromofluoromethane
 Concen: 49.78 ug/l
 RT: 7.59 min Scan# 1810
 Delta R.T. 0.00 min
 Lab File: VN051165.D
 Acq: 13 Sep 2018 12:18

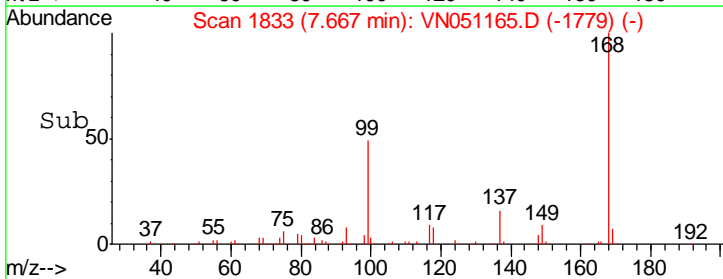
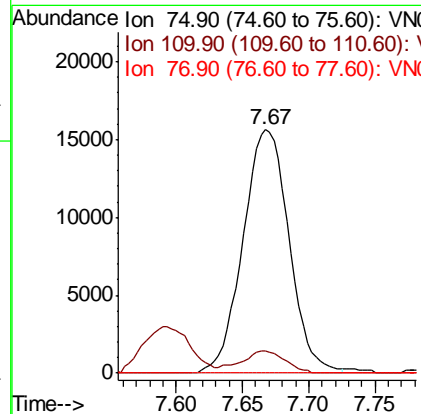
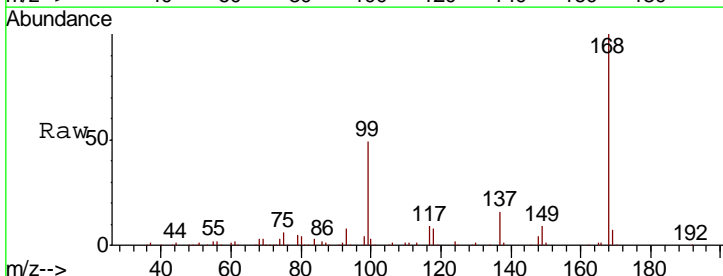
Instrument : MSVOA_N
 ClientSampleID : PB112798ZHE#03

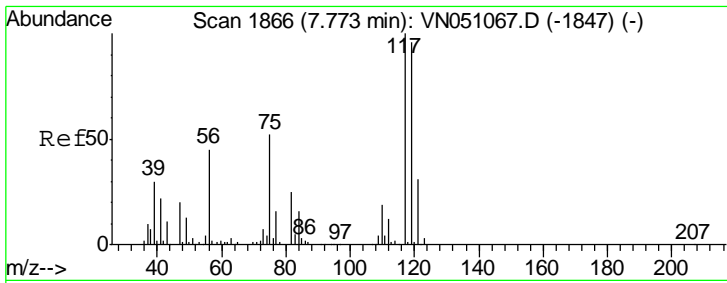
Tgt Ion	Resp	Lower	Upper
113	100		
111	101.0	83.0	124.6
192	23.0	18.7	28.1



#36
 1,1-Dichloropropene
 Concen: 3.65 ug/l
 RT: 7.67 min Scan# 1833
 Delta R.T. -0.13 min
 Lab File: VN051165.D
 Acq: 13 Sep 2018 12:18

Tgt Ion	Resp	Lower	Upper
75	100		
110	8.6	18.6	55.8#
77	0.0	25.2	37.8#

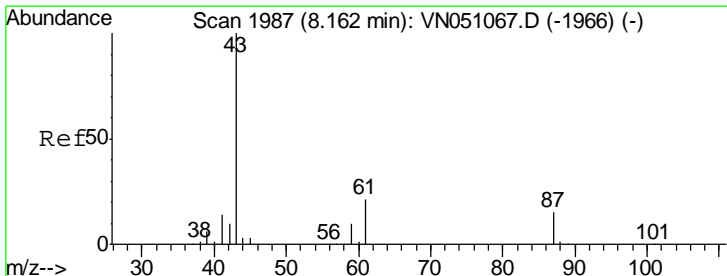
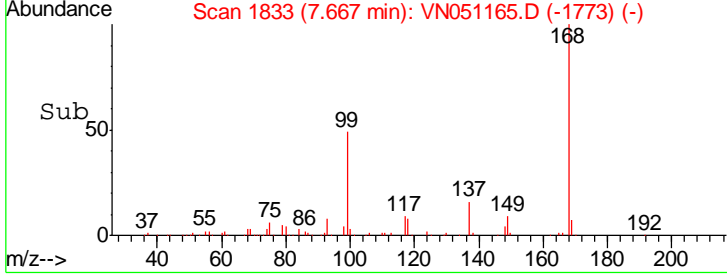
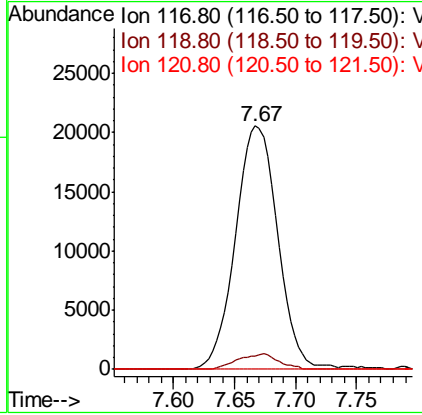
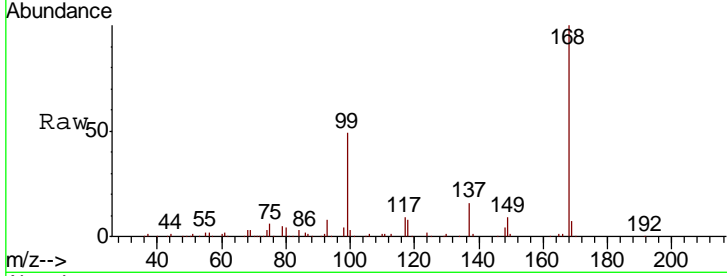




#38
 Carbon Tetrachloride
 Concen: 4.84 ug/l
 RT: 7.67 min Scan# 1833
 Delta R.T. -0.11 min
 Lab File: VN051165.D
 Acq: 13 Sep 2018 12:18

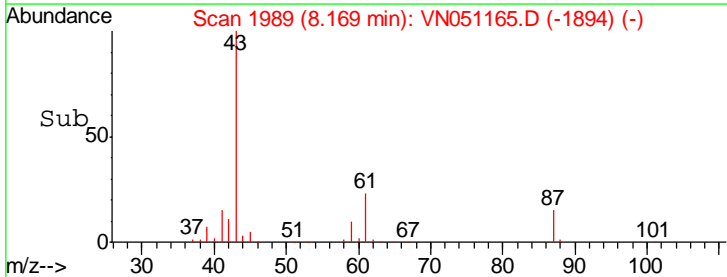
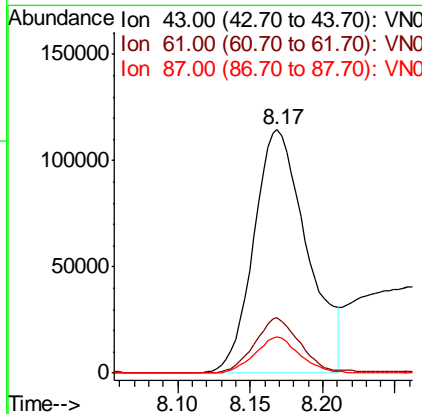
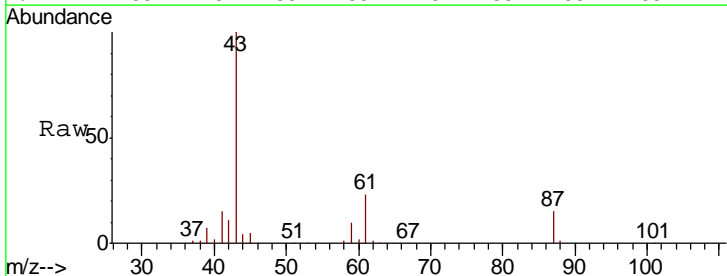
Instrument : MSVOA_N
 ClientSampled : PB112798ZHE#03

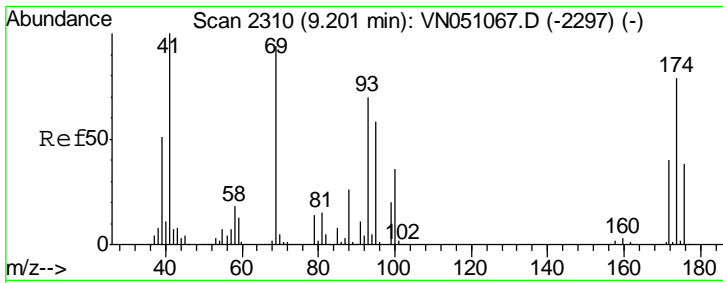
Tgt Ion	Resp	Lower	Upper
117	49343		
119	5.6	76.8	115.2#
121	0.0	24.6	36.8#



#43
 Isopropyl Acetate
 Concen: 27.65 ug/l
 RT: 8.17 min Scan# 1989
 Delta R.T. 0.01 min
 Lab File: VN051165.D
 Acq: 13 Sep 2018 12:18

Tgt Ion	Resp	Lower	Upper
43	292864		
61	19.6	25.0	37.6#
87	12.6	11.8	17.8

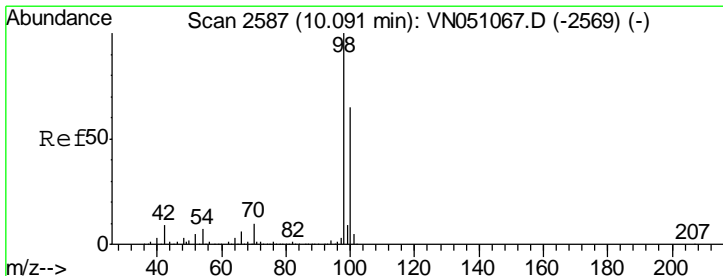
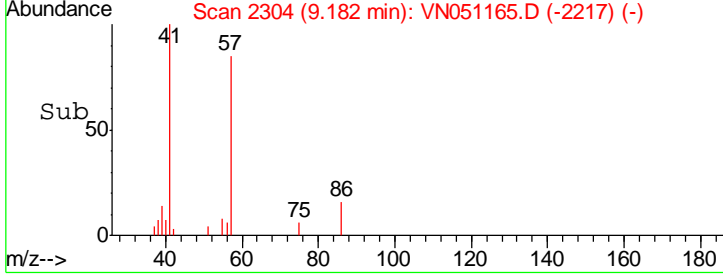
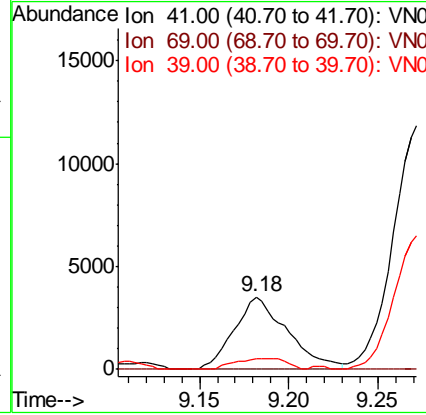
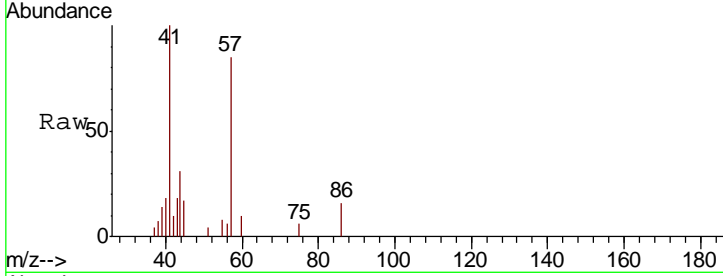




#48
 Methyl methacrylate
 Concen: 1.41 ug/l
 RT: 9.18 min Scan# 2304
 Delta R.T. -0.02 min
 Lab File: VN051165.D
 Acq: 13 Sep 2018 12:18

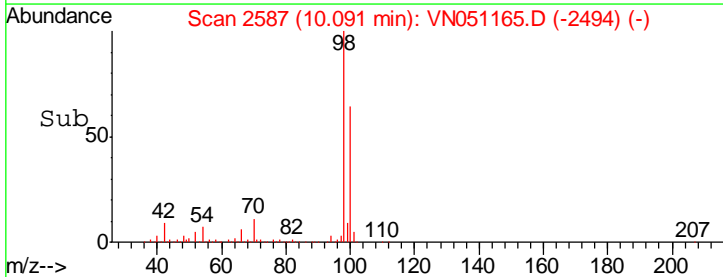
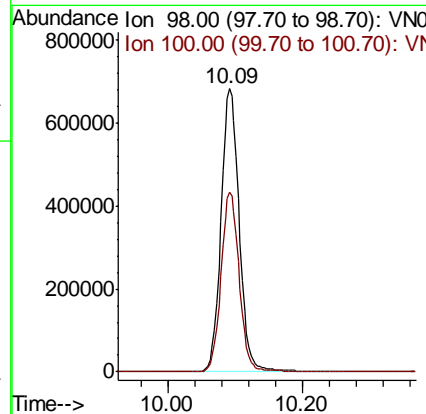
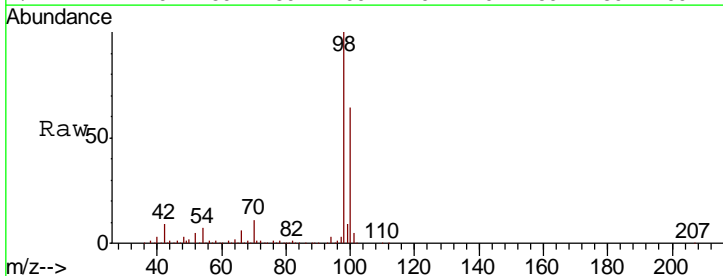
Instrument : MSVOA_N
 ClientSampled : PB112798ZHE#03

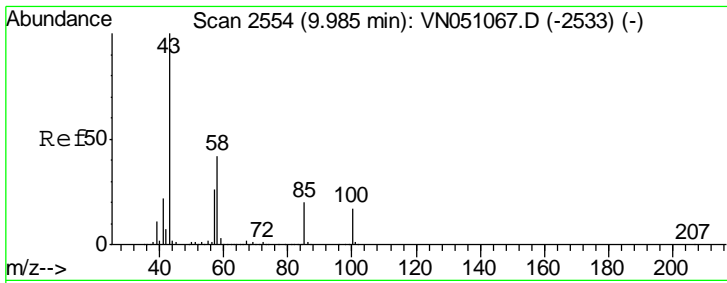
Tgt Ion	Resp	Lower	Upper
41	100		
69	0.0	77.7	116.5#
39	14.1	41.6	62.4#



#50
 Toluene-d8
 Concen: 47.79 ug/l
 RT: 10.09 min Scan# 2587
 Delta R.T. 0.00 min
 Lab File: VN051165.D
 Acq: 13 Sep 2018 12:18

Tgt Ion	Resp	Lower	Upper
98	100		
100	63.6	52.0	78.0

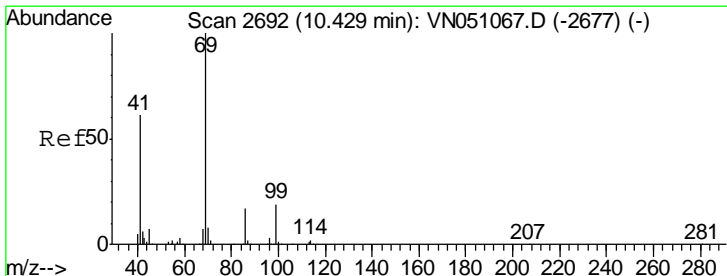
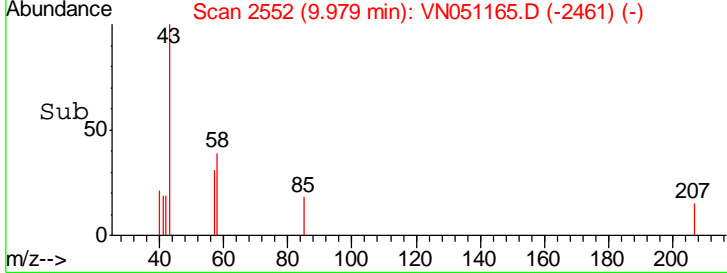
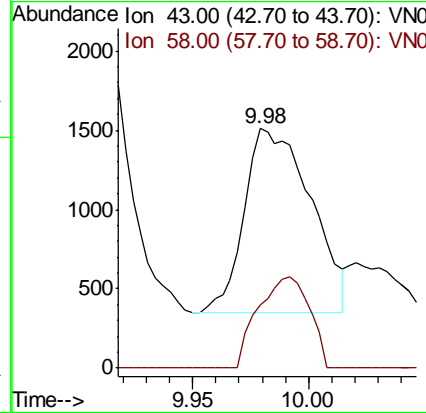
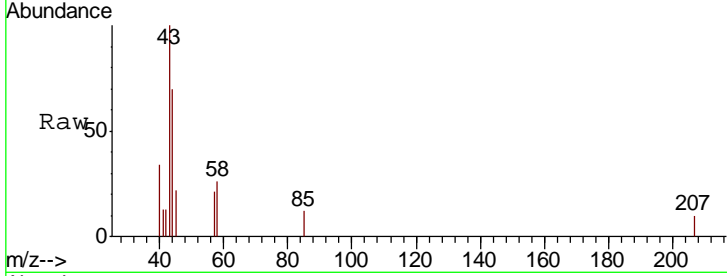




#51
 4-Methyl-2-Pentanone
 Concen: 0.40 ug/l
 RT: 9.98 min Scan# 2552
 Delta R.T. -0.01 min
 Lab File: VN051165.D
 Acq: 13 Sep 2018 12:18

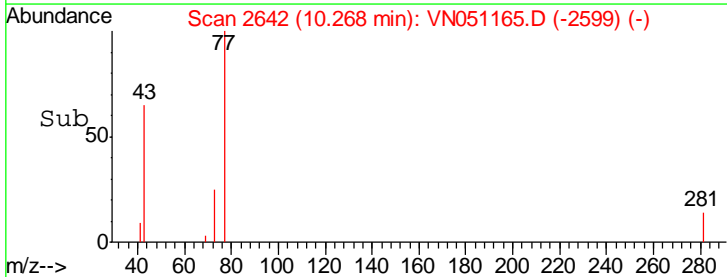
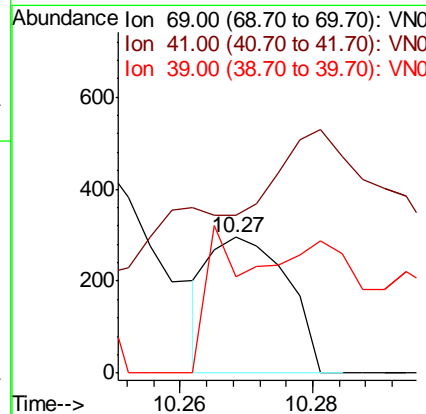
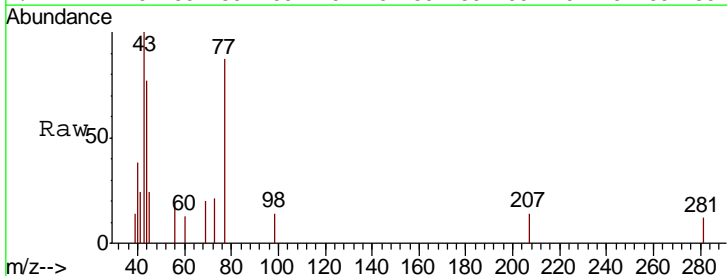
Instrument : MSVOA_N
 ClientSampled : PB112798ZHE#03

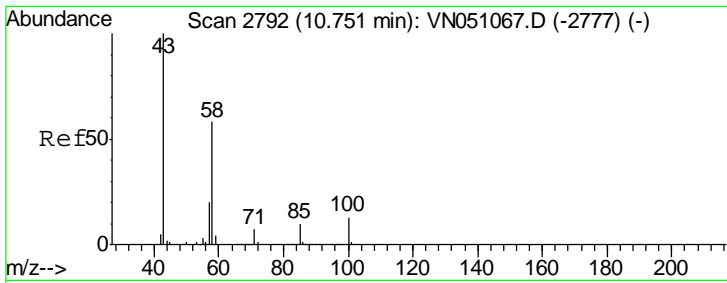
Tgt Ion: 43 Resp: 2324
 Ion Ratio Lower Upper
 43 100
 58 37.8 33.5 50.3



#56
 Ethyl methacrylate
 Concen: 2.48 ug/l
 RT: 10.27 min Scan# 2642
 Delta R.T. -0.16 min
 Lab File: VN051165.D
 Acq: 13 Sep 2018 12:18

Tgt Ion: 69 Resp: 239
 Ion Ratio Lower Upper
 69 100
 41 109.2 47.8 71.8#
 39 61.5 23.0 34.4#

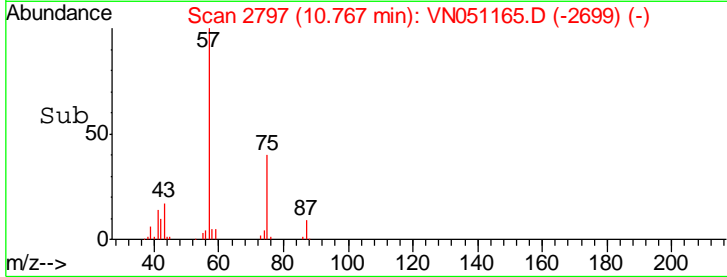
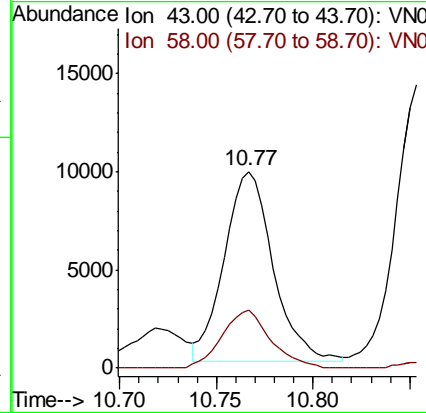
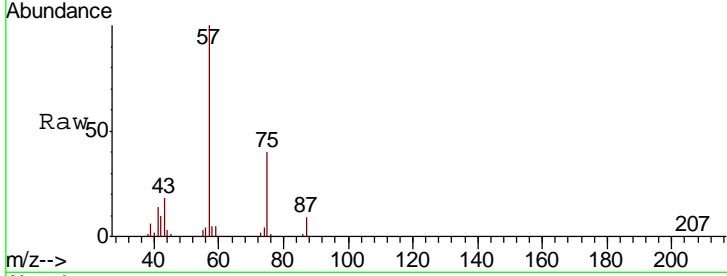




#59
 2-Hexanone
 Concen: 4.30 ug/l
 RT: 10.77 min Scan# 2797
 Delta R.T. 0.02 min
 Lab File: VN051165.D
 Acq: 13 Sep 2018 12:18

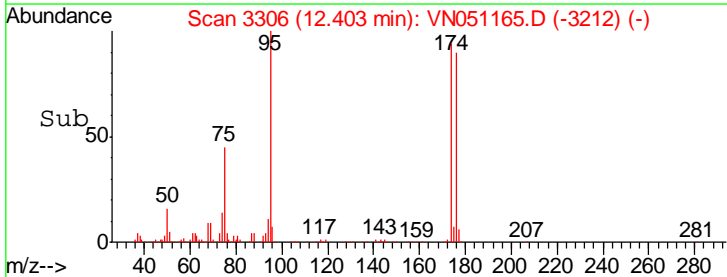
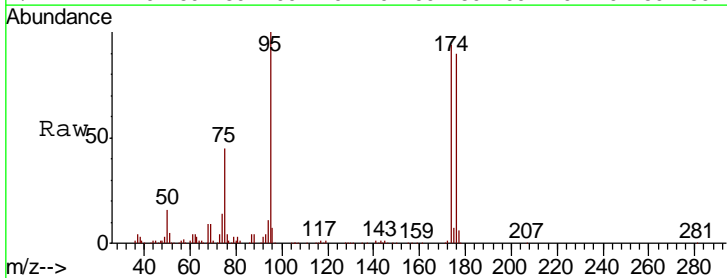
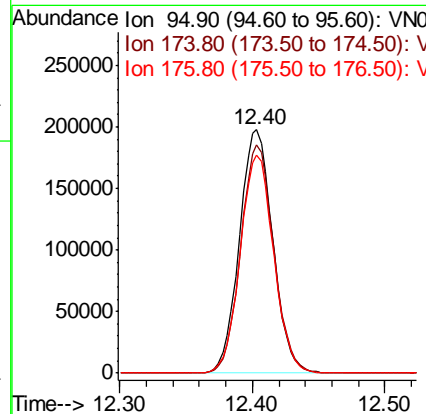
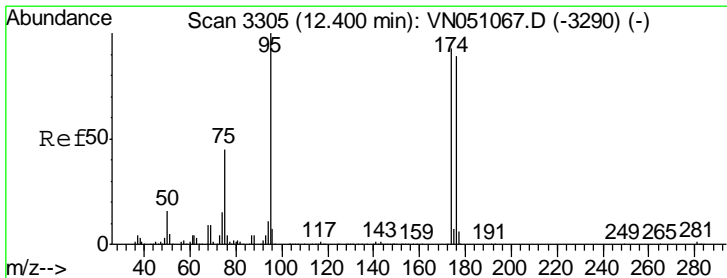
Instrument : MSVOA_N
 ClientSampled : PB112798ZHE#03

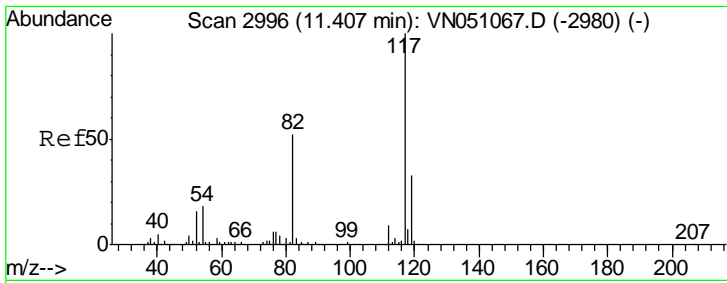
Tgt Ion	Resp	Lower	Upper
43	17067		
58	30.2	29.3	88.0



#62
 4-Bromofluorobenzene
 Concen: 38.68 ug/l
 RT: 12.40 min Scan# 3306
 Delta R.T. 0.00 min
 Lab File: VN051165.D
 Acq: 13 Sep 2018 12:18

Tgt Ion	Resp	Lower	Upper
95	344433		
174	93.1	0.0	184.8
176	89.8	0.0	178.6

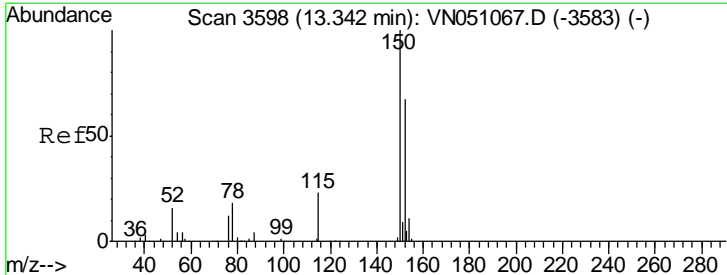
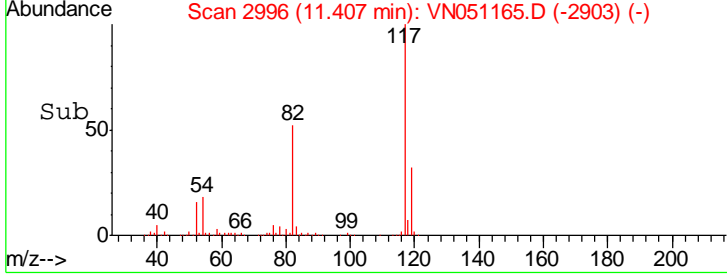
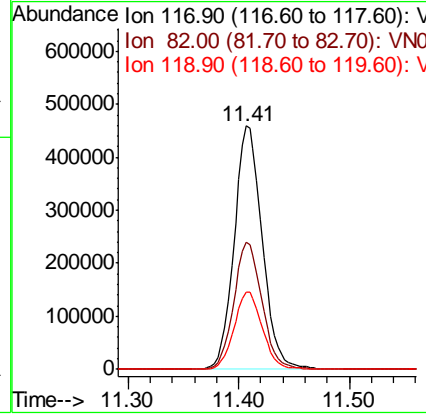
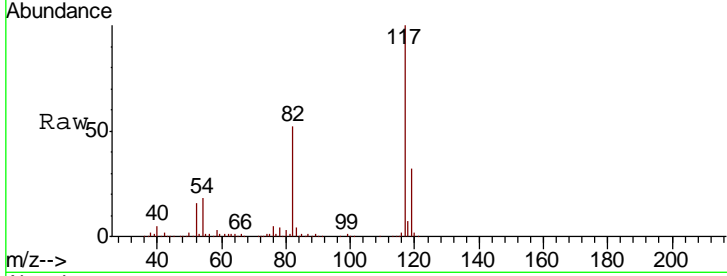




#63
 Chlorobenzene-d5
 Concen: 50.00 ug/l
 RT: 11.41 min Scan# 2996
 Delta R.T. 0.00 min
 Lab File: VN051165.D
 Acq: 13 Sep 2018 12:18

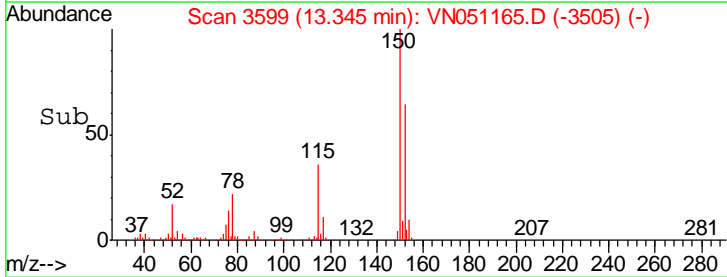
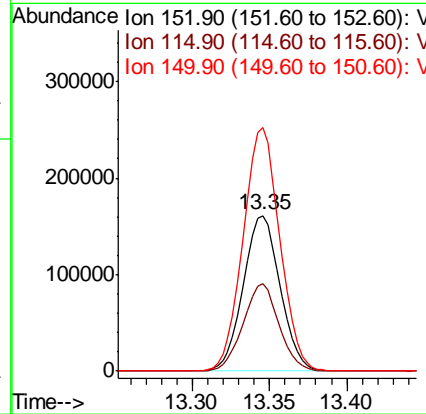
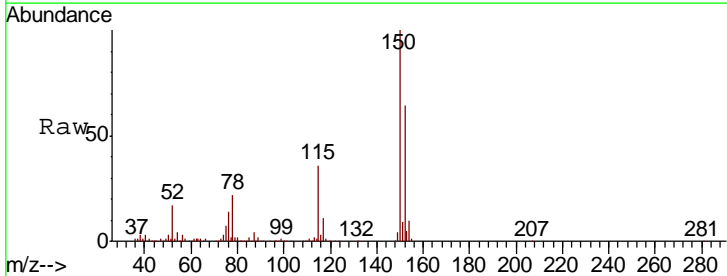
Instrument : MSVOA_N
 ClientSampleId : PB112798ZHE#03

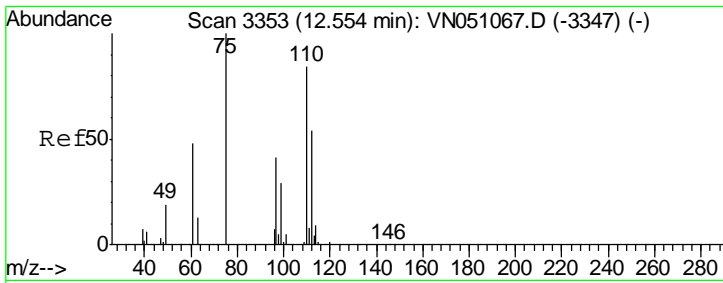
Tgt Ion	Resp	Lower	Upper
117	100		
82	52.2	41.8	62.6
119	31.8	26.2	39.2



#72
 1,4-Dichlorobenzene-d4
 Concen: 50.00 ug/l
 RT: 13.35 min Scan# 3599
 Delta R.T. 0.00 min
 Lab File: VN051165.D
 Acq: 13 Sep 2018 12:18

Tgt Ion	Resp	Lower	Upper
152	100		
115	54.6	28.2	84.7
150	155.9	0.0	349.0

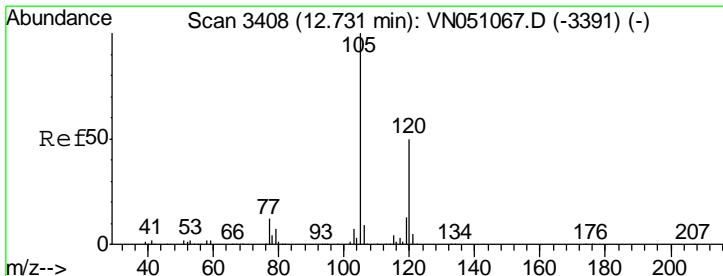
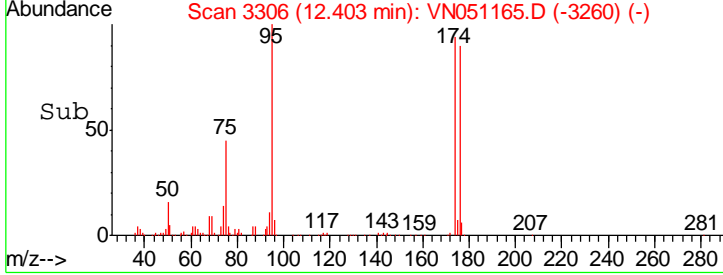
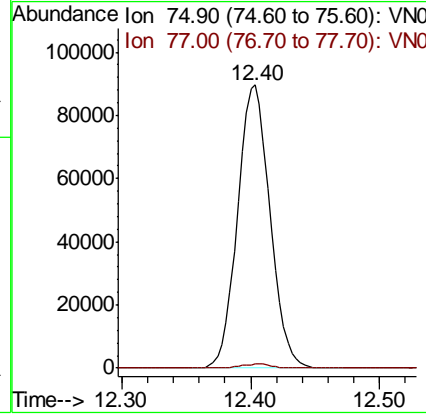
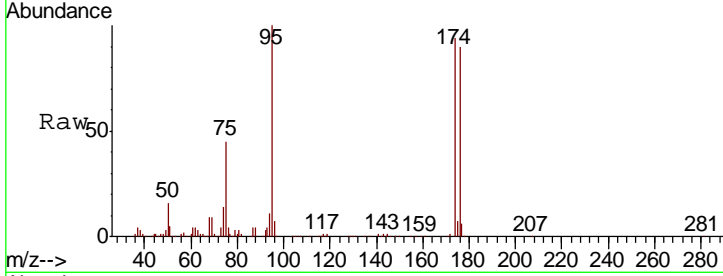




#76
 1,2,3-Trichloropropane
 Concen: 37.45 ug/l
 RT: 12.40 min Scan# 3306
 Delta R.T. -0.15 min
 Lab File: VN051165.D
 Acq: 13 Sep 2018 12:18

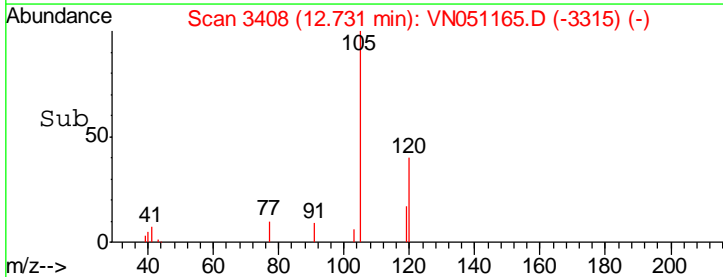
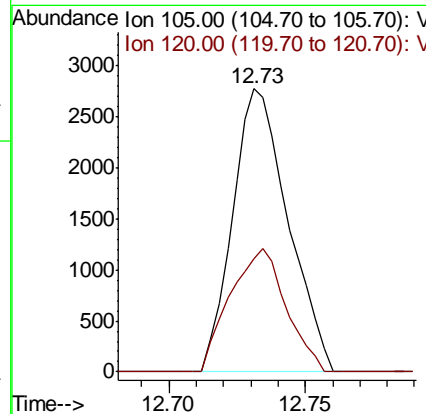
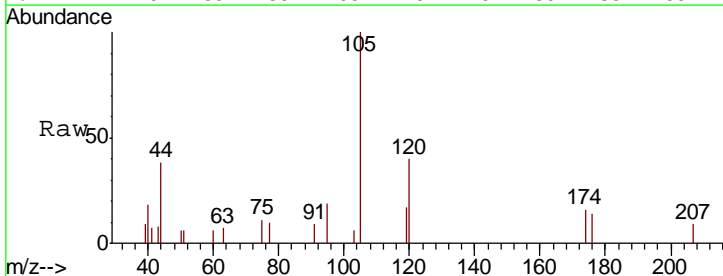
Instrument : MSVOA_N
 ClientSampled : PB112798ZHE#03

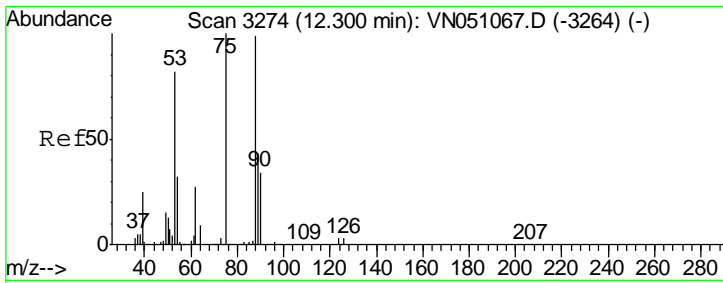
Tgt Ion: 75 Resp: 156440
 Ion Ratio Lower Upper
 75 100
 77 1.4 0.0 0.0#



#80
 1,3,5-Trimethylbenzene
 Concen: 0.22 ug/l
 RT: 12.73 min Scan# 3408
 Delta R.T. 0.00 min
 Lab File: VN051165.D
 Acq: 13 Sep 2018 12:18

Tgt Ion: 105 Resp: 3904
 Ion Ratio Lower Upper
 105 100
 120 44.1 24.9 74.6

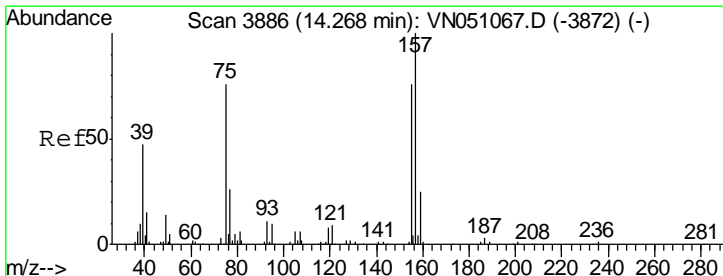
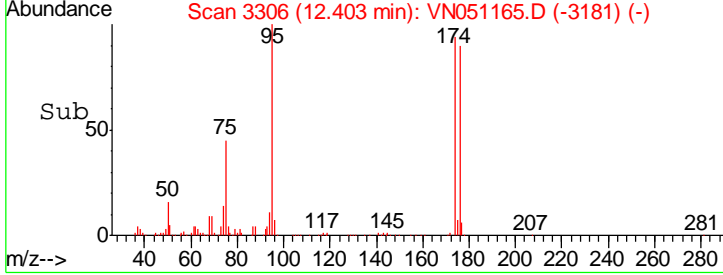
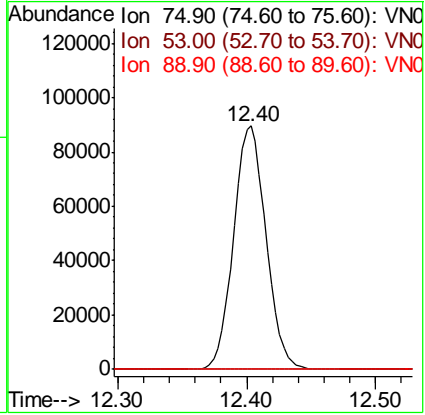
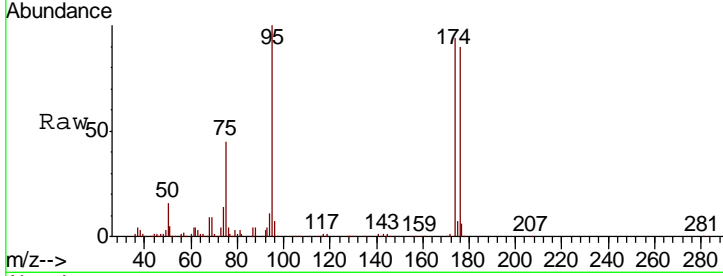




#81
 trans-1,4-Dichloro-2-butene
 Concen: 111.38 ug/l
 RT: 12.40 min Scan# 3306
 Delta R.T. 0.10 min
 Lab File: VN051165.D
 Acq: 13 Sep 2018 12:18

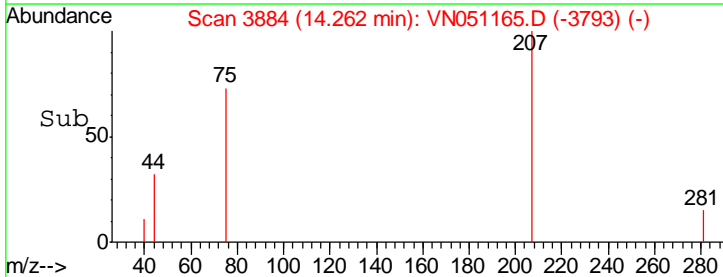
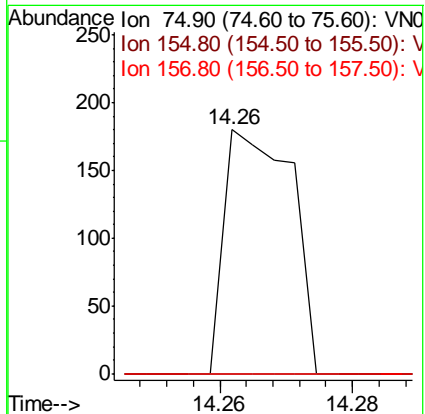
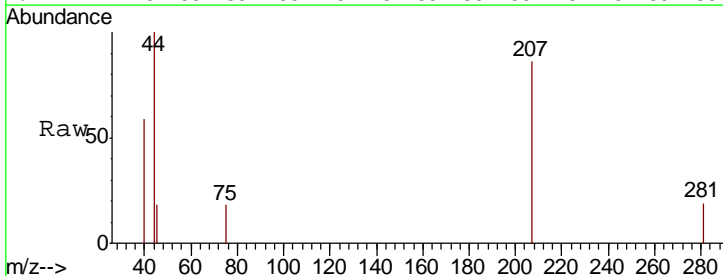
Instrument : MSVOA_N
 ClientSampleId : PB112798ZHE#03

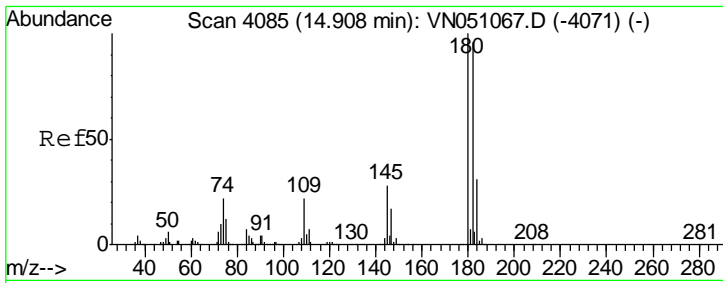
Tgt Ion	Resp	Lower	Upper
75	100		
53	0.1	67.8	101.8#
89	0.0	36.0	54.0#



#92
 1,2-Dibromo-3-Chloropropane
 Concen: 0.82 ug/l
 RT: 14.26 min Scan# 3884
 Delta R.T. -0.01 min
 Lab File: VN051165.D
 Acq: 13 Sep 2018 12:18

Tgt Ion	Resp	Lower	Upper
75	100		
155	0.0	48.7	146.1#
157	0.0	63.6	190.9#

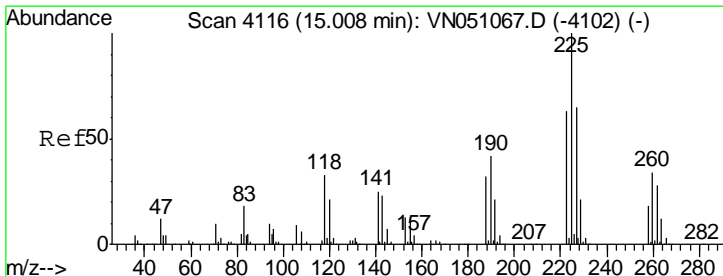
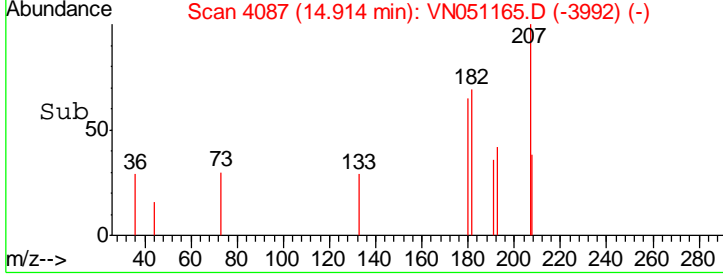
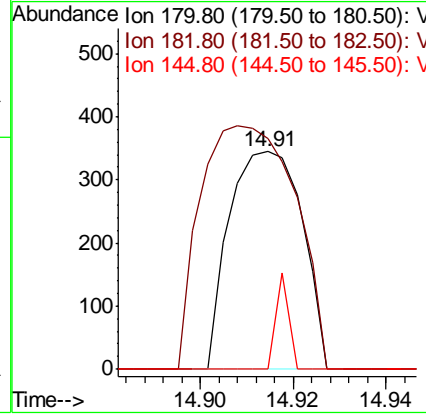
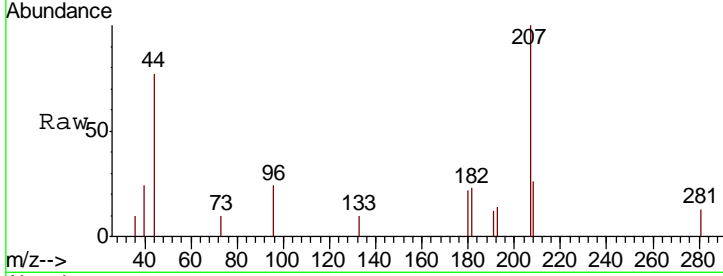




#93
 1,2,4-Trichlorobenzene
 Concen: 4.05 ug/l
 RT: 14.91 min Scan# 4087
 Delta R.T. 0.01 min
 Lab File: VN051165.D
 Acq: 13 Sep 2018 12:18

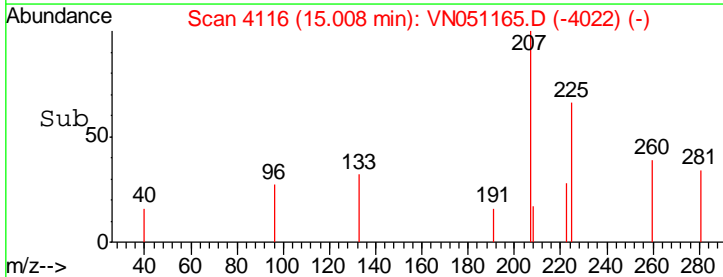
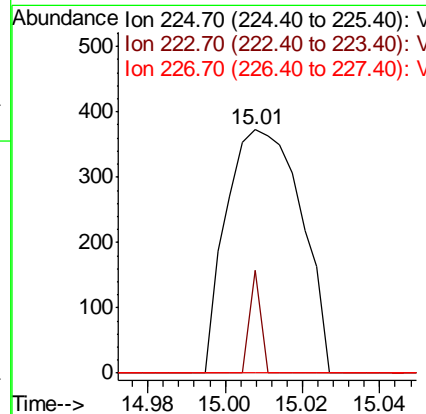
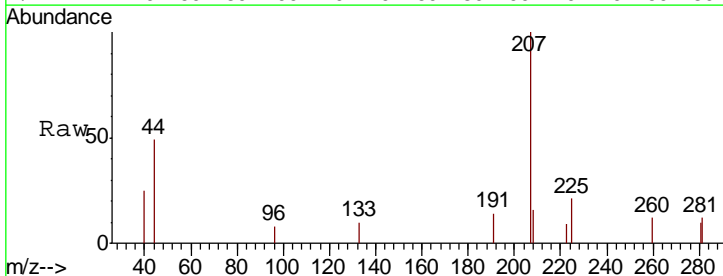
Instrument : MSVOA_N
 ClientSampled : PB112798ZHE#03

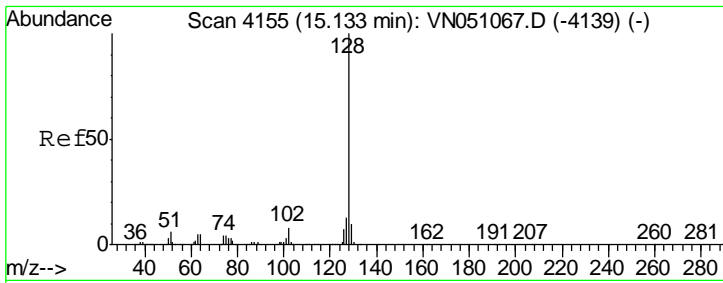
Tgt Ion	Resp	Lower	Upper
180	375		
182	145.3	47.3	141.8#
145	8.0	14.2	42.6#



#94
 Hexachlorobutadiene
 Concen: Below Cal
 RT: 15.01 min Scan# 4116
 Delta R.T. 0.00 min
 Lab File: VN051165.D
 Acq: 13 Sep 2018 12:18

Tgt Ion	Resp	Lower	Upper
225	499		
223	6.0	31.4	94.0#
227	0.0	32.1	96.3#

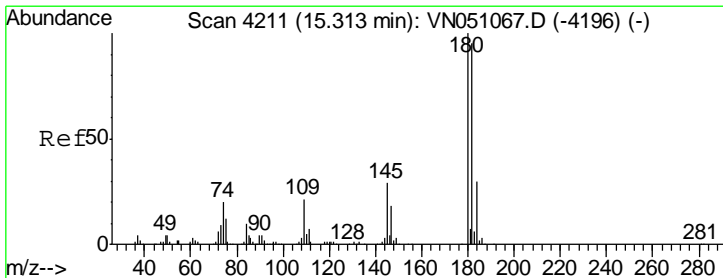
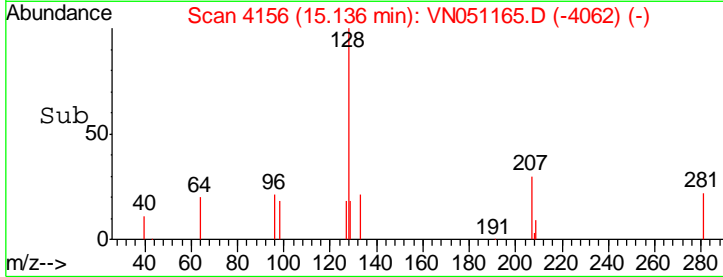
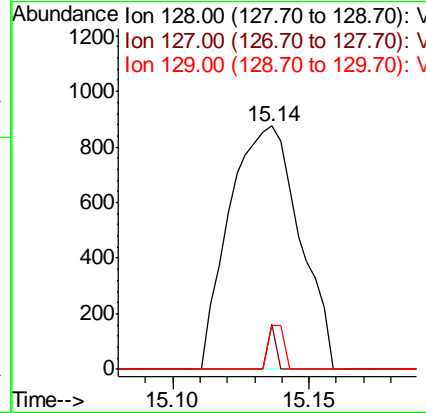
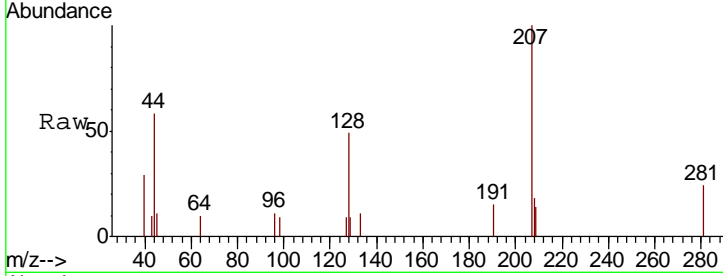




#95
 Naphthalene
 Concen: 5.48 ug/l
 RT: 15.14 min Scan# 4156
 Delta R.T. 0.00 min
 Lab File: VN051165.D
 Acq: 13 Sep 2018 12:18

Instrument :
 MSVOA_N
 ClientSampled :
 PB112798ZHE#03

Tgt Ion	Resp	Lower	Upper
128	1558		
127	2.0	10.6	15.8#
129	3.9	8.6	12.8#



#96
 1,2,3-Trichlorobenzene
 Concen: 3.09 ug/l
 RT: 15.32 min Scan# 4213
 Delta R.T. 0.01 min
 Lab File: VN051165.D
 Acq: 13 Sep 2018 12:18

Tgt Ion	Resp	Lower	Upper
180	714		
182	92.3	47.8	143.3
145	0.0	14.6	43.8#

