

Data Path : Z:\VOASRV\HPCHEM1\MSVOA\_N\DATA\VN091319\  
 Data File : VN057975.D  
 Acq On : 12 Sep 2019 17:52  
 Operator : JC/SP  
 Sample : K4859-01  
 Misc : 5.00mL/MSVOA\_N/WATER  
 ALS Vial : 24 Sample Multiplier: 1

Instrument :  
 MSVOA\_N  
 ClientSampleId :  
 IDW-DECON-WATER-091119

Quant Time: Sep 13 04:47:37 2019  
 Quant Method : Z:\VOASRV\HPCHEM1\MSVOA\_N\METHODS\82N091019W.M  
 Quant Title : SW846 8260  
 QLast Update : Tue Sep 10 03:02:13 2019  
 Response via : Initial Calibration

Internal Standards	R.T.	QIon	Response	Conc	Units	Dev(Min)
1) Pentafluorobenzene	0.00	168	0	0.00	ug/l	-7.65
34) 1,4-Difluorobenzene	8.83	114	392990	50.00	ug/l	0.26
63) Chlorobenzene-d5	11.47	117	309422	50.00	ug/l	0.06
72) 1,4-Dichlorobenzene-d4	13.36	152	161065	50.00	ug/l	0.02

## System Monitoring Compounds

33) 1,2-Dichloroethane-d4	0.00	65	0	0.00	ug/l	
Spiked Amount	50.000					
Recovery						0.00%
35) Dibromofluoromethane	7.98	113	199667	55.05	ug/l	0.41
Spiked Amount	50.000					
Recovery						110.10%
50) Toluene-d8	10.21	98	728846	51.76	ug/l	0.13
Spiked Amount	50.000					
Recovery						103.52%
62) 4-Bromofluorobenzene	12.75	95	400	0.07	ug/l	0.35
Spiked Amount	50.000					
Recovery						0.14%

## Target Compounds

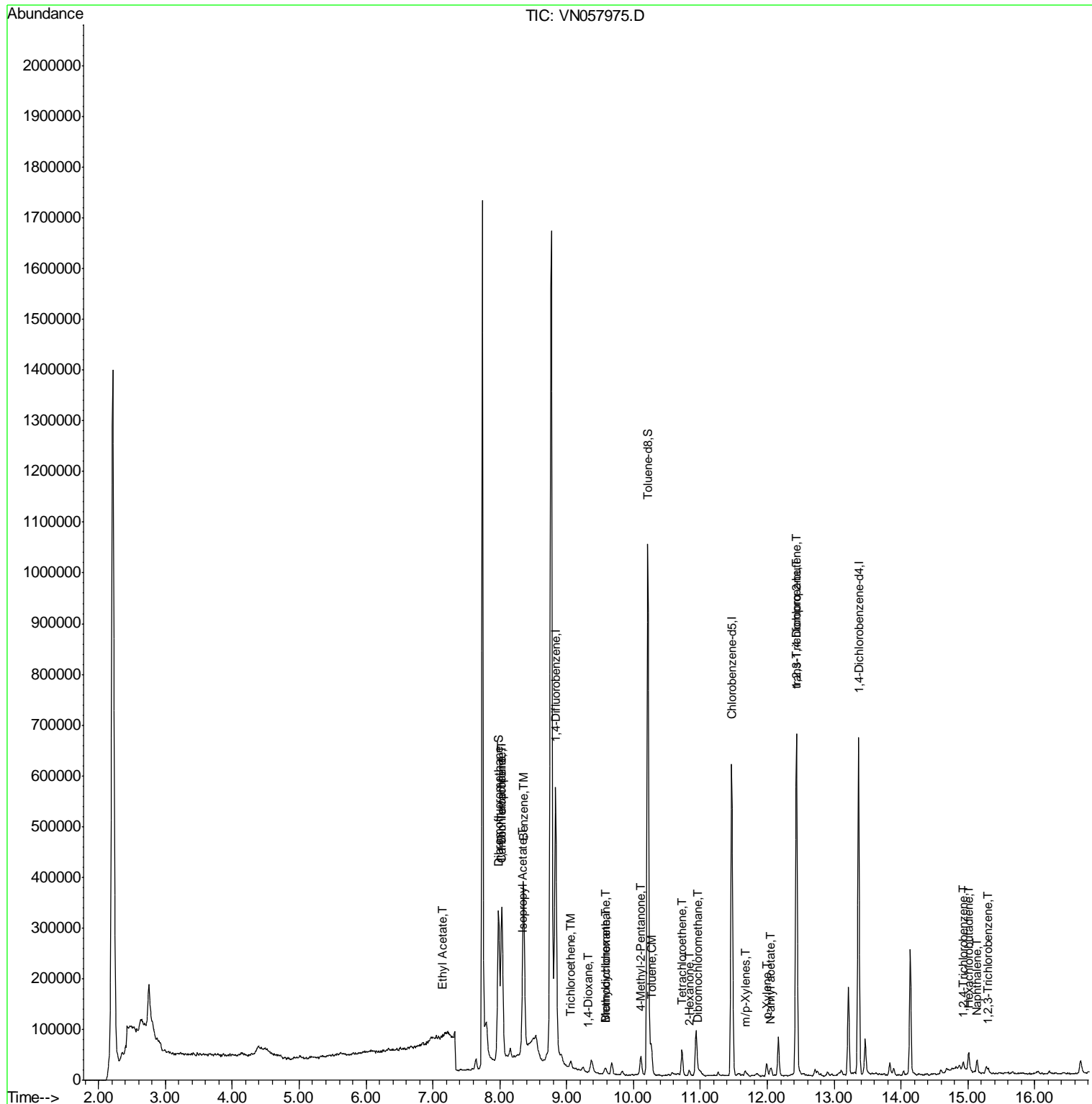
Target Compounds	R.T.	QIon	Response	Conc	Units	Qvalue
36) 1,1-Dichloropropene	8.03	75	20504	4.499	ug/l #	44
37) Ethyl Acetate	7.14	43	1110	0.236	ug/l #	66
38) Carbon Tetrachloride	8.03	117	21600	5.191	ug/l #	17
39) Methylcyclohexane	9.58	83	7361	1.536	ug/l #	24
40) Benzene	8.37	78	3079	0.224	ug/l #	1
43) Isopropyl Acetate	8.33	43	10865	1.372	ug/l #	56
44) Trichloroethene	9.07	130	4155	1.235	ug/l	83
47) Bromodichloromethane	9.58	83	7361	1.528	ug/l	86
49) 1,4-Dioxane	9.31	88	33	0.486	ug/l #	23
51) 4-Methyl-2-Pentanone	10.11	43	29892	6.379	ug/l	96
52) Toluene	10.27	92	8478	0.981	ug/l	100
59) 2-Hexanone	10.84	43	7381	2.101	ug/l	96
60) Dibromochloromethane	10.98	129	881	0.259	ug/l	64
64) Tetrachloroethene	10.72	164	10443	4.571	ug/l	95
68) m/p-Xylenes	11.67	106	2769	0.533	ug/l	84
69) o-Xylene	11.99	106	6148	1.190	ug/l	93
74) N-amyl acetate	12.06	43	8619	1.585	ug/l #	52
76) 1,2,3-Trichloropropane	12.44	75	124828	34.260	ug/l #	100
81) trans-1,4-Dichloro-2-buten	12.44	75	124828	120.561	ug/l #	6
93) 1,2,4-Trichlorobenzene	14.92	180	2255	0.604	ug/l	90
94) Hexachlorobutadiene	15.01	225	333	0.210	ug/l #	43
95) Naphthalene	15.14	128	19003	0.459	ug/l	99
96) 1,2,3-Trichlorobenzene	15.31	180	2836	1.851	ug/l	95

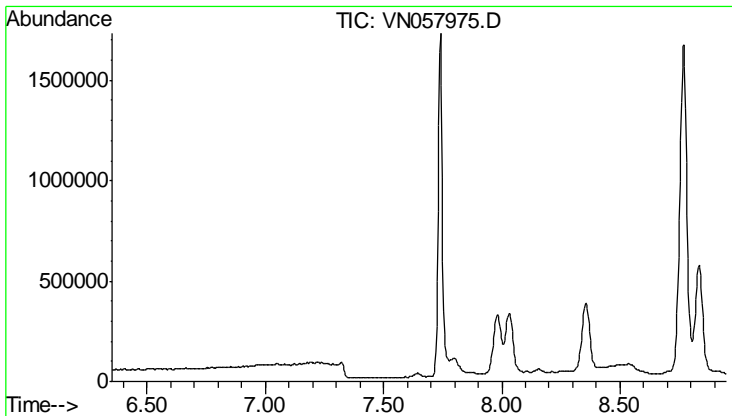
(#) = qualifier out of range (m) = manual integration (+) = signals summed

Data Path : Z:\VOASRV\HPCHEM1\MSVOA\_N\DATA\VN091319\  
 Data File : VN057975.D  
 Acq On : 12 Sep 2019 17:52  
 Operator : JC/SP  
 Sample : K4859-01  
 Misc : 5.00mL/MSVOA\_N/WATER  
 ALS Vial : 24 Sample Multiplier: 1

Instrument :  
 MSVOA\_N  
 Client Sample ID :  
 IDW-DECON-WATER-091119

Quant Time: Sep 13 04:47:37 2019  
 Quant Method : Z:\VOASRV\HPCHEM1\MSVOA\_N\METHODS\82N091019W.M  
 Quant Title : SW846 8260  
 QLast Update : Tue Sep 10 03:02:13 2019  
 Response via : Initial Calibration

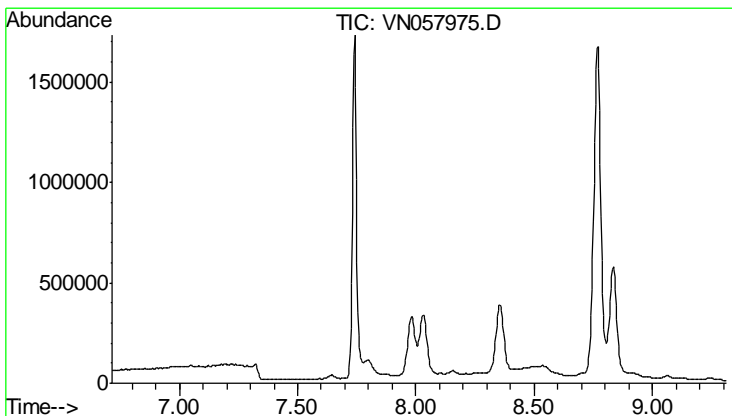
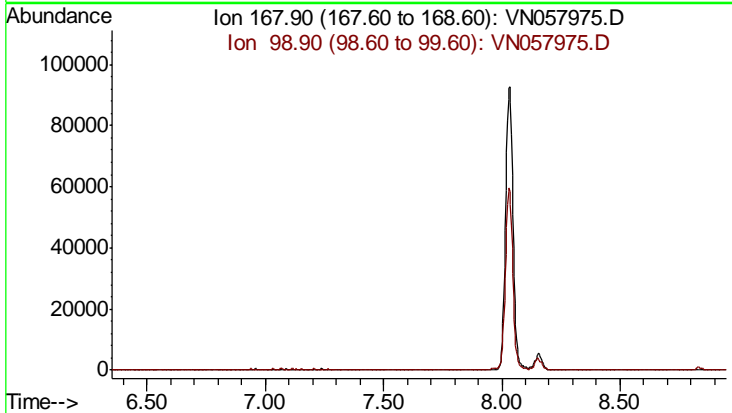




#1  
 Pentafluorobenzene  
 Concen: 0.000 ug/l  
 Expected RT: 7.65 min  
 Lab File: VN057975.D  
 Acq: 12 Sep 2019 17:52

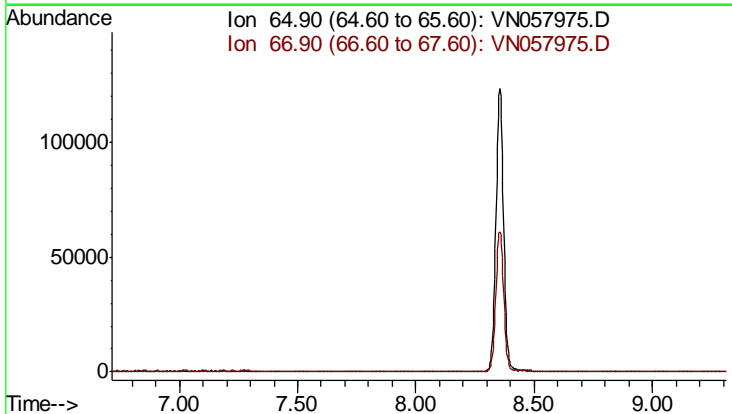
Instrument :  
 MSVOA\_N  
 ClientSampled :  
 IDW-DECON-WATER-091119

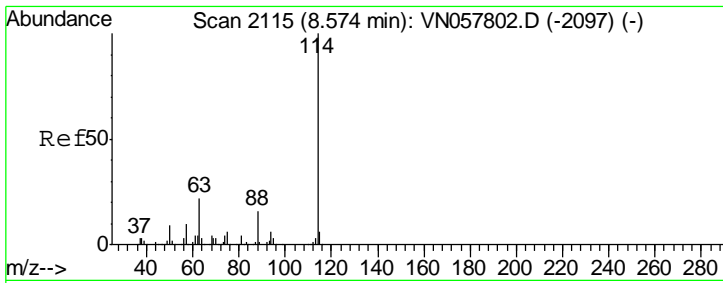
Tgt Ion: 168  
 Sig Exp Ratio  
 168 100  
 99 60.0



#33  
 1,2-Dichloroethane-d4  
 Concen: 0.000 ug/l  
 Expected RT: 8.01 min  
 Lab File: VN057975.D  
 Acq: 12 Sep 2019 17:52

Tgt Ion: 65  
 Sig Exp Ratio  
 65 100  
 67 52.0



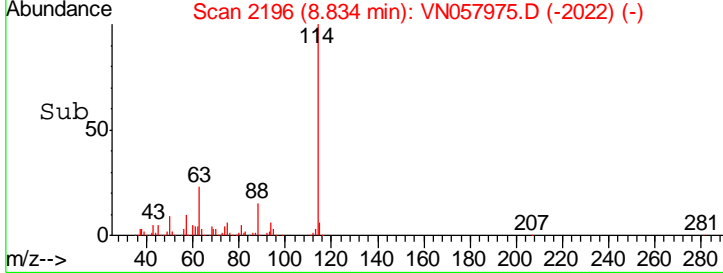
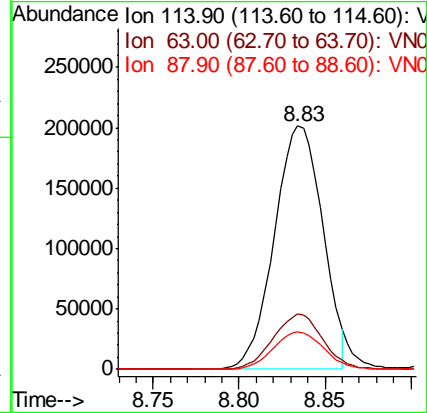
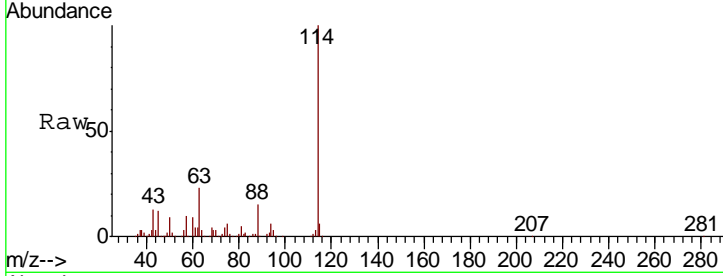


#34  
 1,4-Difluorobenzene  
 Concen: 50.000 ug/l  
 RT: 8.83 min Scan# 2196  
 Delta R.T. 0.26 min  
 Lab File: VN057975.D  
 Acq: 12 Sep 2019 17:52

**Instrument :**  
 MSVOA\_N  
**ClientSampled :**  
 IDW-DECON-WATER-091119

Tgt Ion:114 Resp: 392990

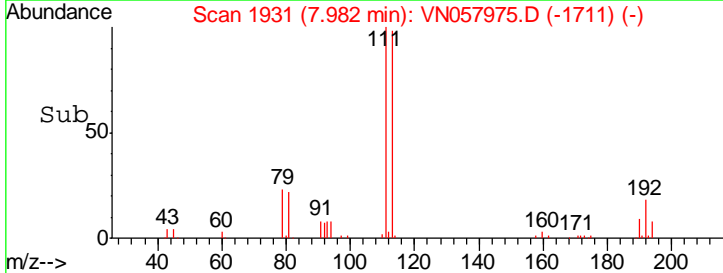
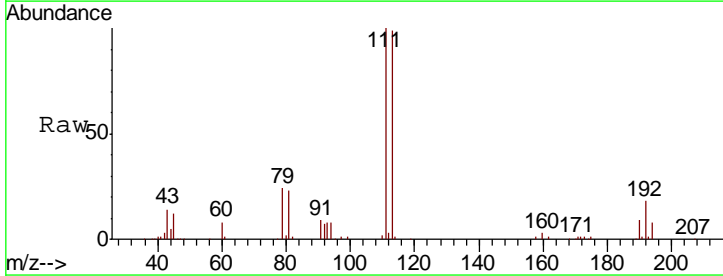
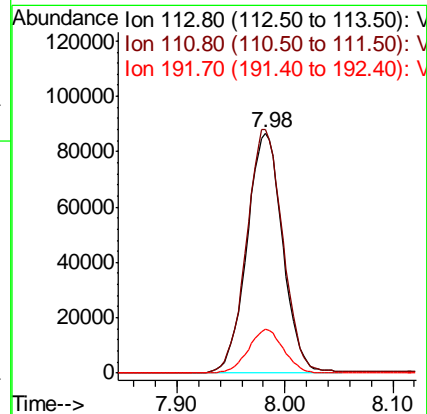
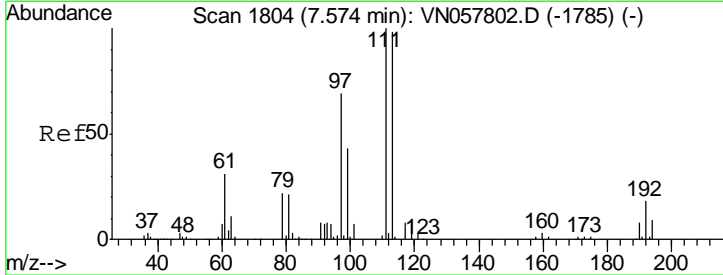
Ion	Ratio	Lower	Upper
114	100		
63	22.5	0.0	44.0
88	15.2	0.0	31.4

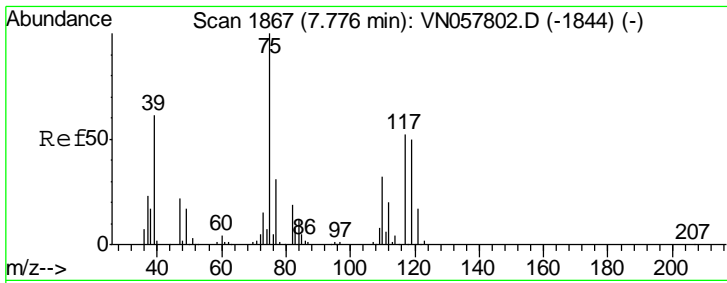


#35  
 Dibromofluoromethane  
 Concen: 55.048 ug/l  
 RT: 7.98 min Scan# 1931  
 Delta R.T. 0.41 min  
 Lab File: VN057975.D  
 Acq: 12 Sep 2019 17:52

Tgt Ion:113 Resp: 199667

Ion	Ratio	Lower	Upper
113	100		
111	102.8	81.3	121.9
192	18.0	14.6	22.0

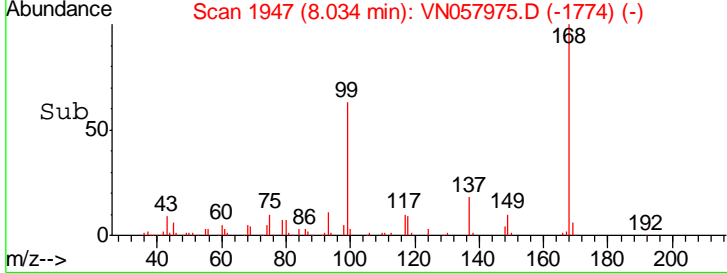
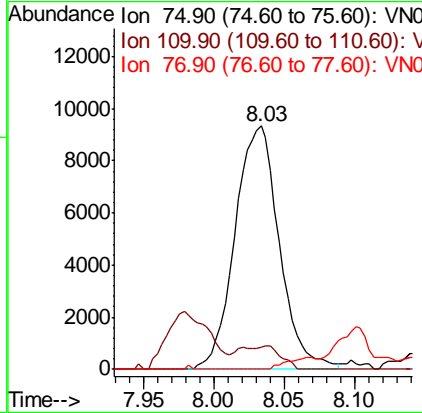
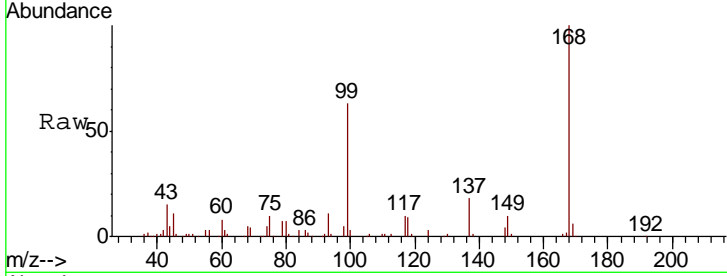




#36  
 1,1-Dichloropropene  
 Concen: 4.499 ug/l  
 RT: 8.03 min Scan# 1947  
 Delta R.T. 0.26 min  
 Lab File: VN057975.D  
 Acq: 12 Sep 2019 17:52

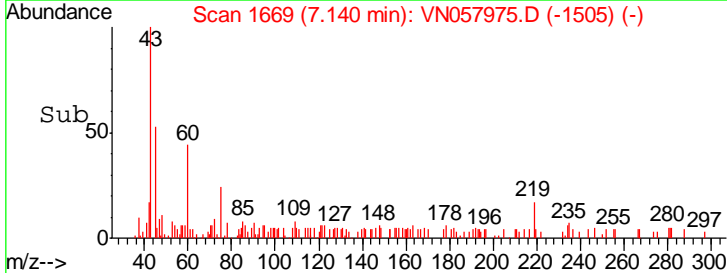
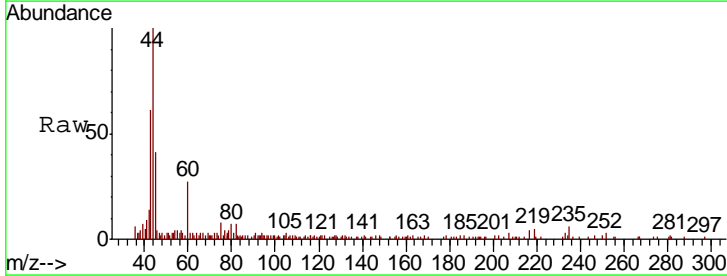
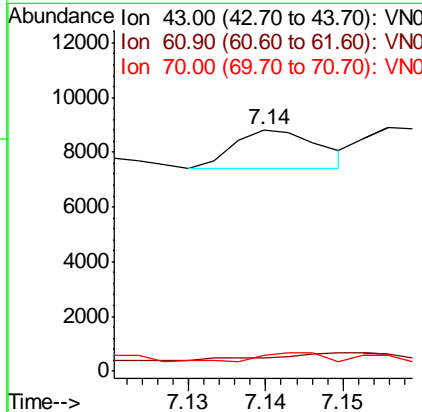
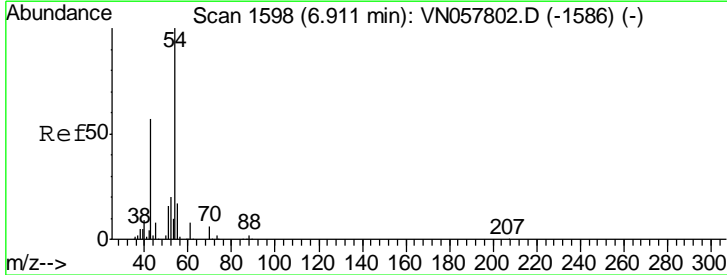
**Instrument :**  
 MSVOA\_N  
**ClientSampled :**  
 IDW-DECON-WATER-091119

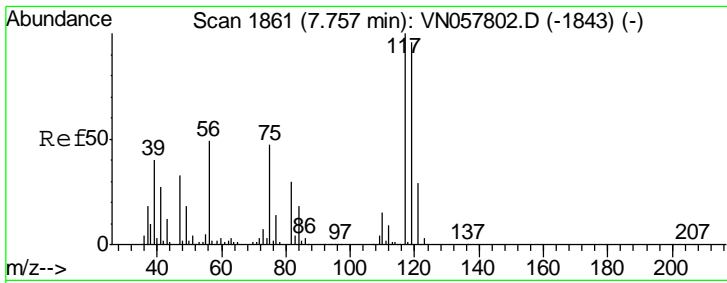
Tgt Ion	Resp	Lower	Upper
75	100		
110	1.1	16.3	48.9#
77	0.0	25.0	37.4#



#37  
 Ethyl Acetate  
 Concen: 0.236 ug/l  
 RT: 7.14 min Scan# 1669  
 Delta R.T. 0.23 min  
 Lab File: VN057975.D  
 Acq: 12 Sep 2019 17:52

Tgt Ion	Resp	Lower	Upper
43	100		
61	28.8	10.5	15.7#
70	18.8	7.4	11.0#

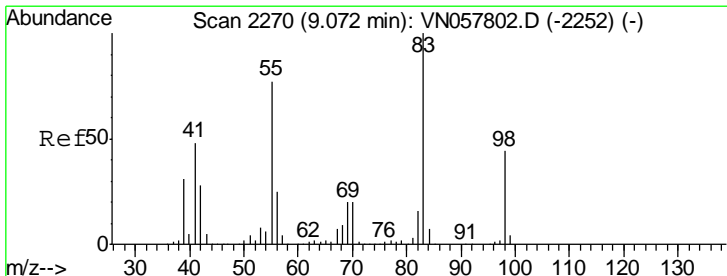
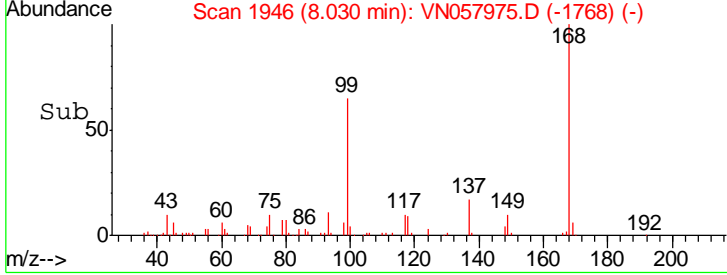
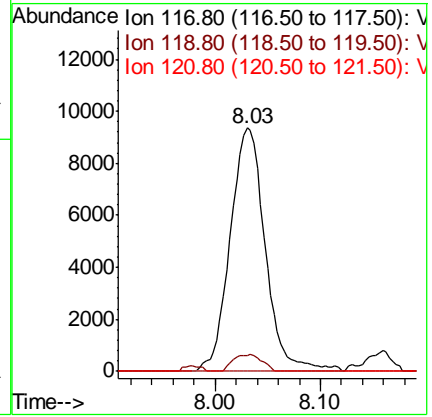
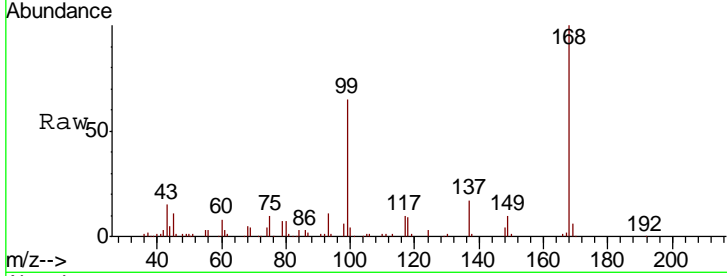




#38  
 Carbon Tetrachloride  
 Concen: 5.191 ug/l  
 RT: 8.03 min Scan# 1946  
 Delta R.T. 0.27 min  
 Lab File: VN057975.D  
 Acq: 12 Sep 2019 17:52

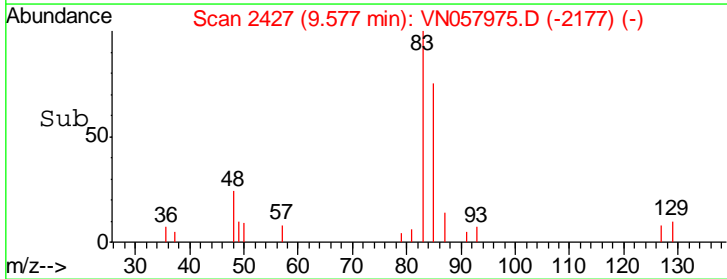
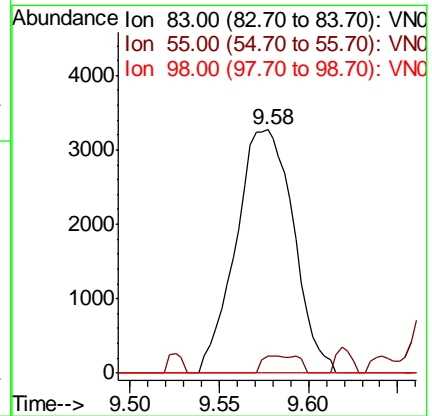
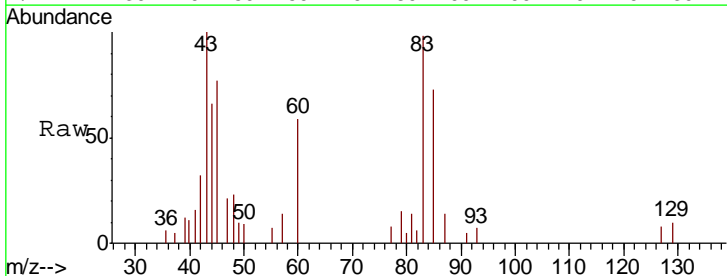
Instrument :  
 MSVOA\_N  
 ClientSampled :  
 IDW-DECON-WATER-091119

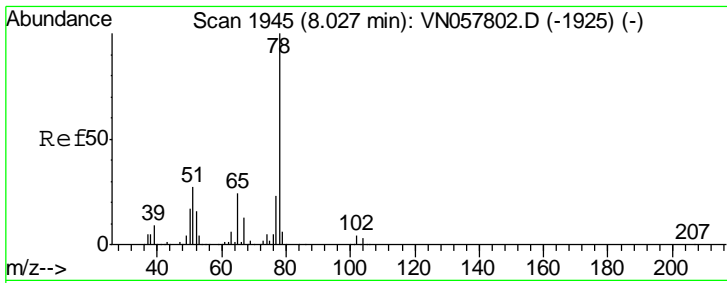
Tgt Ion	Resp	Lower	Upper
117	100		
119	6.6	76.9	115.3#
121	0.0	23.4	35.2#



#39  
 Methylcyclohexane  
 Concen: 1.536 ug/l  
 RT: 9.58 min Scan# 2427  
 Delta R.T. 0.50 min  
 Lab File: VN057975.D  
 Acq: 12 Sep 2019 17:52

Tgt Ion	Resp	Lower	Upper
83	100		
55	6.8	61.6	92.4#
98	0.0	34.9	52.3#

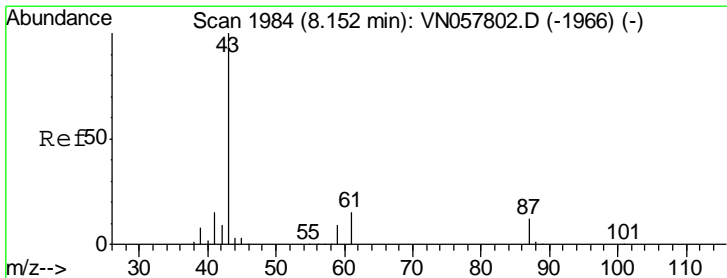
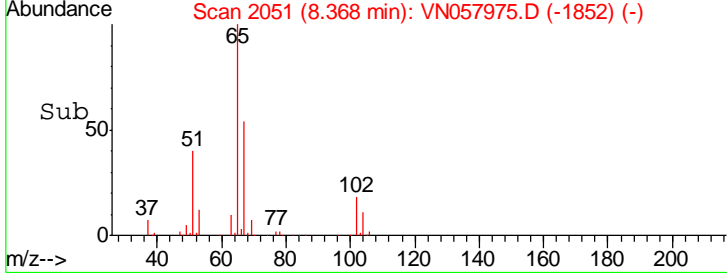
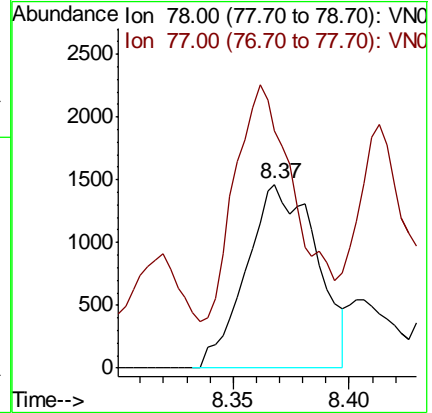
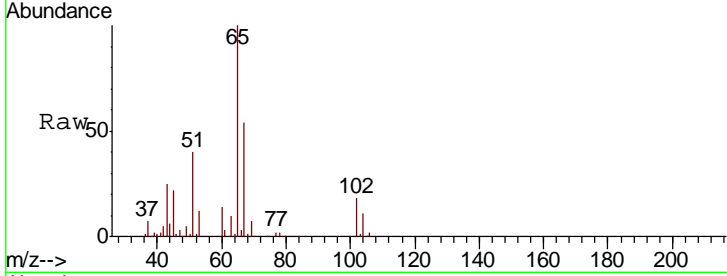




#40  
Benzene  
Concen: 0.224 ug/l  
RT: 8.37 min Scan# 2051  
Delta R.T. 0.34 min  
Lab File: VN057975.D  
Acq: 12 Sep 2019 17:52

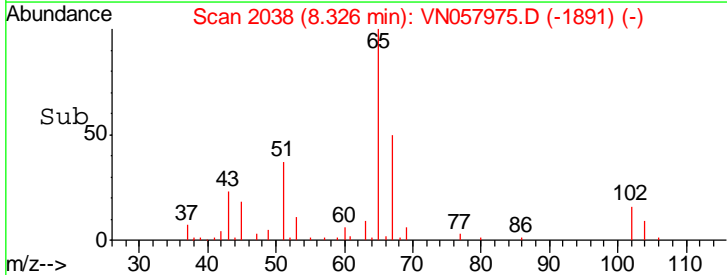
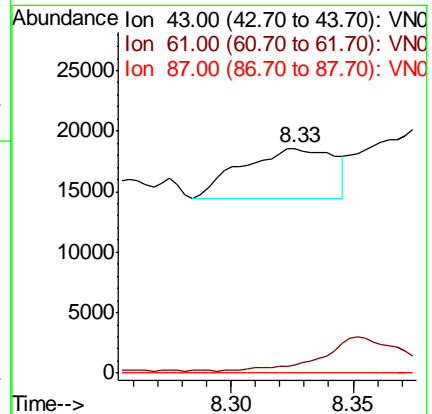
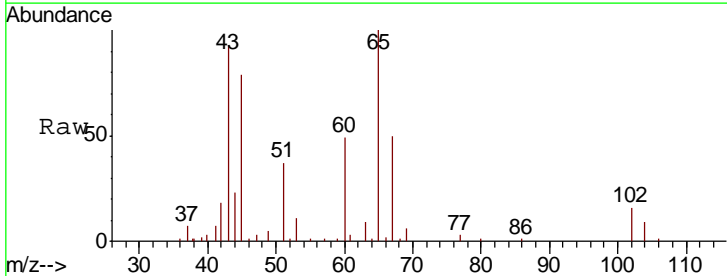
Instrument :  
MSVOA\_N  
ClientSampled :  
IDW-DECON-WATER-091119

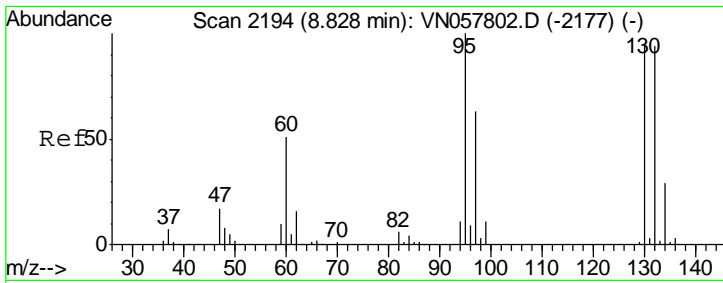
Tgt Ion: 78 Resp: 3079  
Ion Ratio Lower Upper  
78 100  
77 98.8 18.3 27.5#



#43  
Isopropyl Acetate  
Concen: 1.372 ug/l  
RT: 8.33 min Scan# 2038  
Delta R.T. 0.17 min  
Lab File: VN057975.D  
Acq: 12 Sep 2019 17:52

Tgt Ion: 43 Resp: 10865  
Ion Ratio Lower Upper  
43 100  
61 0.0 20.1 30.1#  
87 0.0 9.5 14.3#

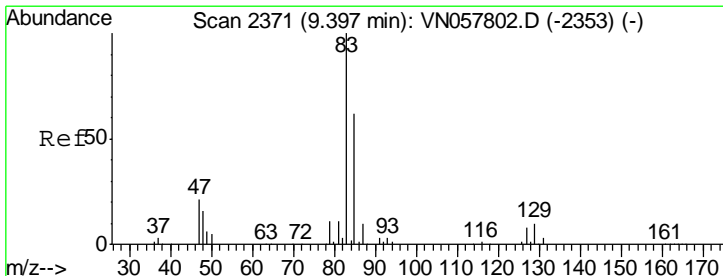
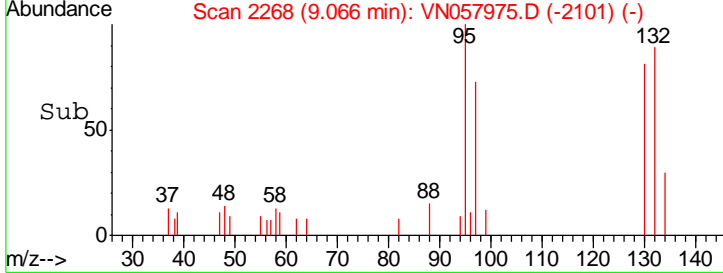
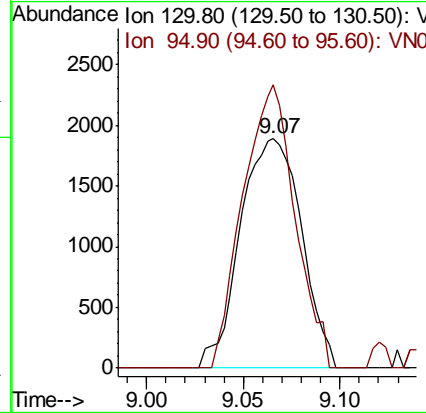
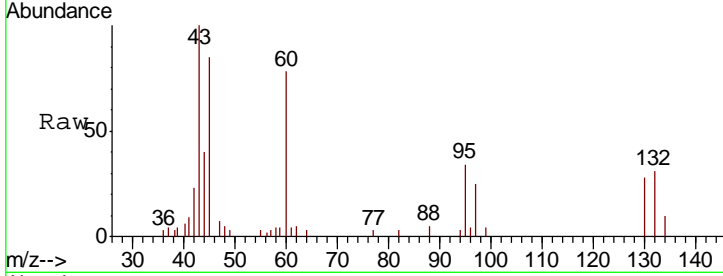




#44  
 Trichloroethene  
 Concen: 1.235 ug/l  
 RT: 9.07 min Scan# 2268  
 Delta R.T. 0.24 min  
 Lab File: VN057975.D  
 Acq: 12 Sep 2019 17:52

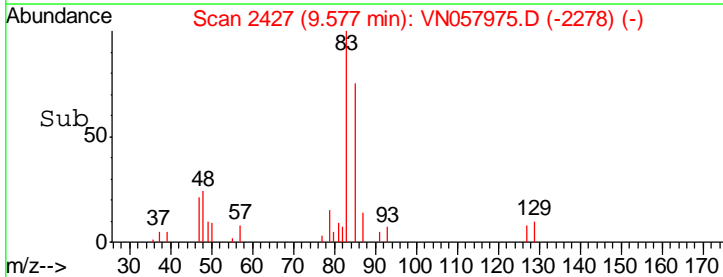
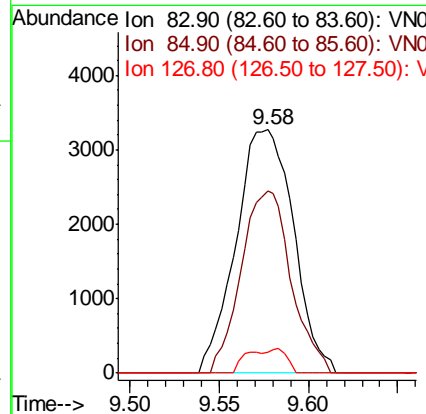
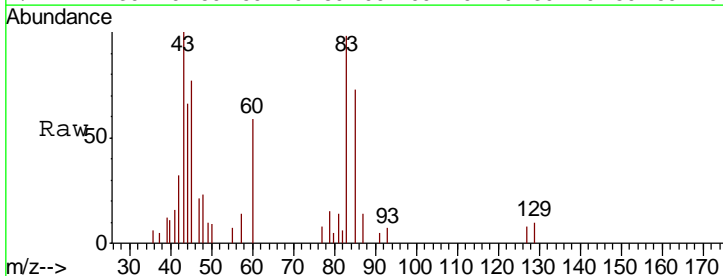
**Instrument :**  
 MSVOA\_N  
**ClientSampled :**  
 IDW-DECON-WATER-091119

Tgt Ion: 130 Resp: 4155  
 Ion Ratio Lower Upper  
 130 100  
 95 123.5 0.0 211.4

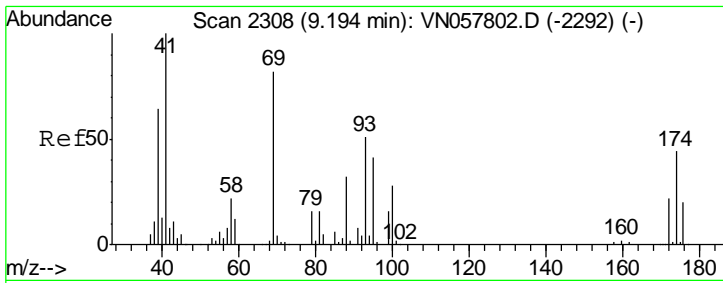


#47  
 Bromodichloromethane  
 Concen: 1.528 ug/l  
 RT: 9.58 min Scan# 2427  
 Delta R.T. 0.18 min  
 Lab File: VN057975.D  
 Acq: 12 Sep 2019 17:52

Tgt Ion: 83 Resp: 7361  
 Ion Ratio Lower Upper  
 83 100  
 85 74.8 49.9 74.9  
 127 8.5 6.5 9.7



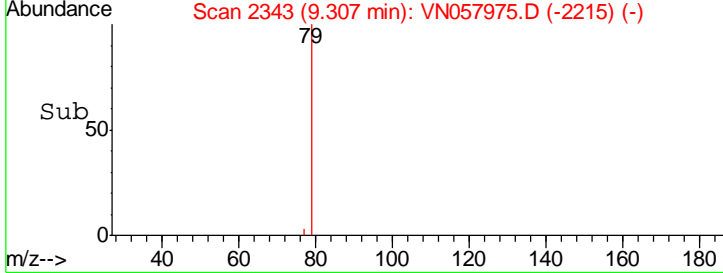
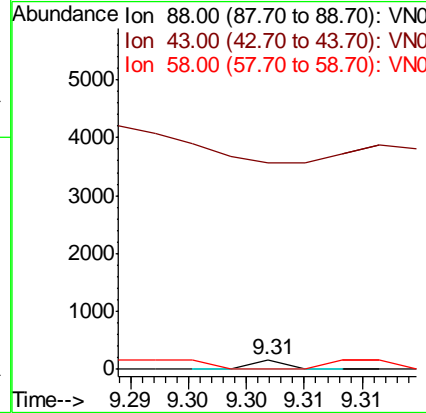
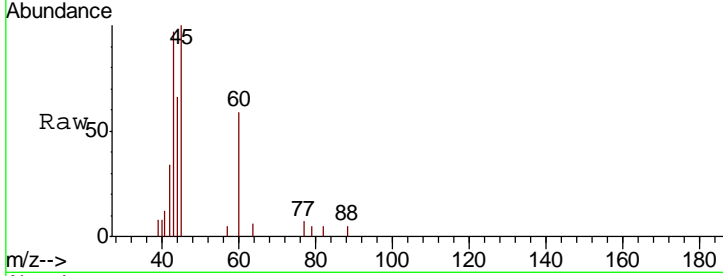




#49  
 1,4-Dioxane  
 Concen: 0.486 ug/l  
 RT: 9.31 min Scan# 2343  
 Delta R.T. 0.11 min  
 Lab File: VN057975.D  
 Acq: 12 Sep 2019 17:52

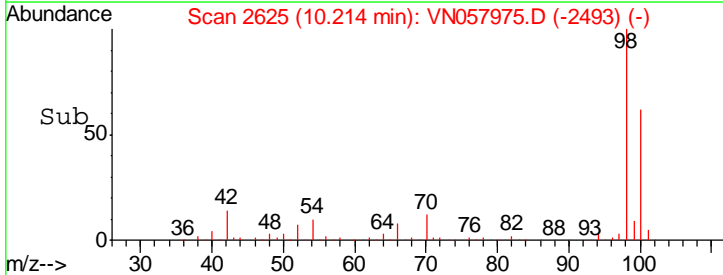
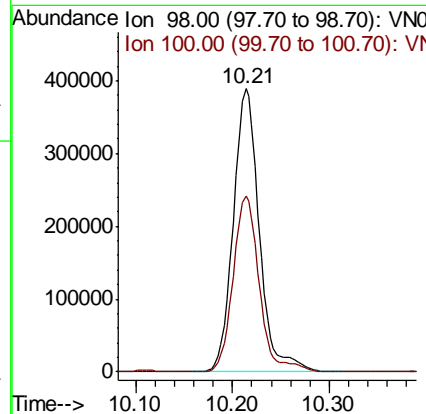
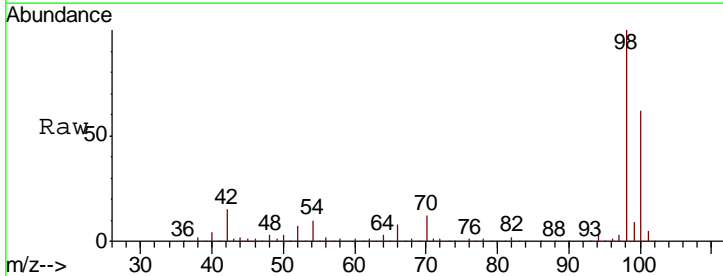
**Instrument :**  
 MSVOA\_N  
**ClientSampled :**  
 IDW-DECON-WATER-091119

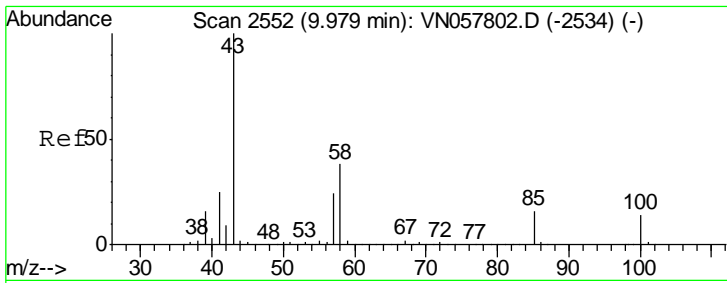
Tgt Ion	Resp	Lower	Upper
88	33		
88	100		
43	0.0	28.5	42.7#
58	0.0	55.8	83.6#



#50  
 Toluene-d8  
 Concen: 51.755 ug/l  
 RT: 10.21 min Scan# 2625  
 Delta R.T. 0.13 min  
 Lab File: VN057975.D  
 Acq: 12 Sep 2019 17:52

Tgt Ion	Resp	Lower	Upper
98	728846		
98	100		
100	62.4	50.3	75.5

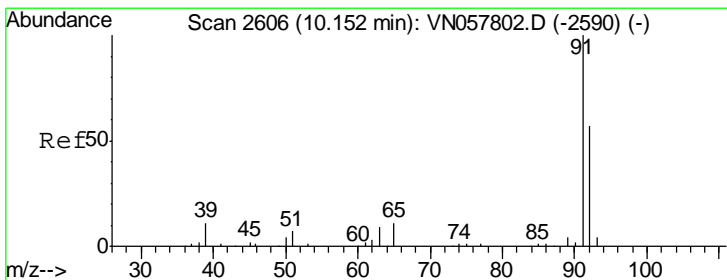
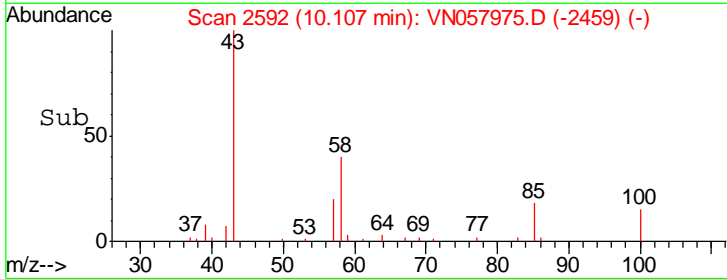
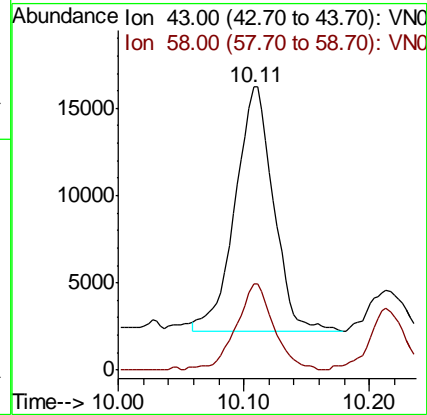
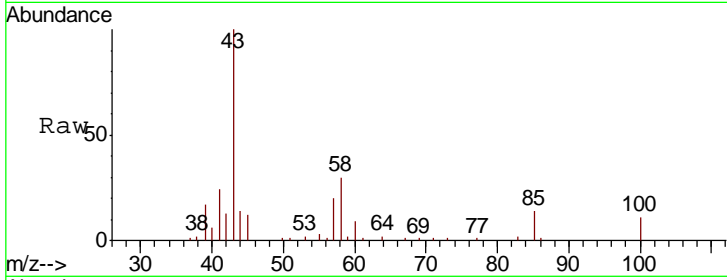




#51  
 4-Methyl-2-Pentanone  
 Concen: 6.379 ug/l  
 RT: 10.11 min Scan# 2592  
 Delta R.T. 0.13 min  
 Lab File: VN057975.D  
 Acq: 12 Sep 2019 17:52

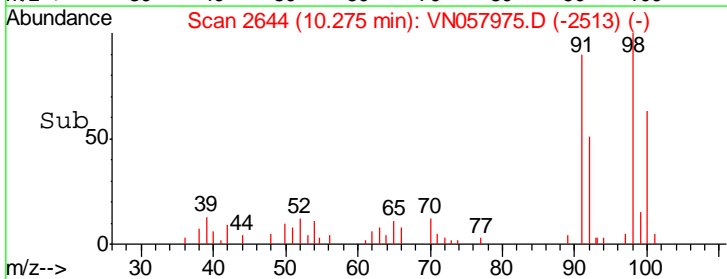
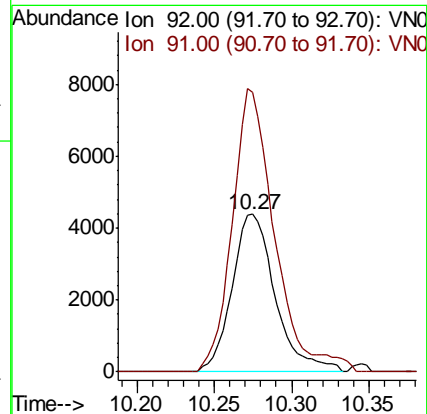
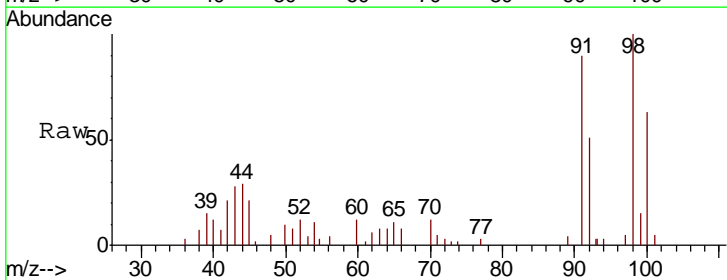
Instrument : MSVOA\_N  
 ClientSampled : IDW-DECON-WATER-091119

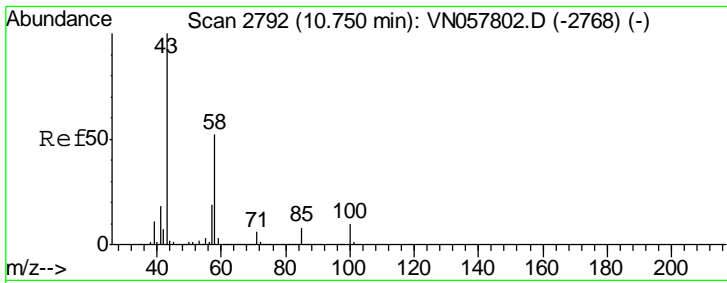
Tgt Ion: 43 Resp: 29892  
 Ion Ratio Lower Upper  
 43 100  
 58 34.6 29.8 44.6



#52  
 Toluene  
 Concen: 0.981 ug/l  
 RT: 10.27 min Scan# 2644  
 Delta R.T. 0.12 min  
 Lab File: VN057975.D  
 Acq: 12 Sep 2019 17:52

Tgt Ion: 92 Resp: 8478  
 Ion Ratio Lower Upper  
 92 100  
 91 176.1 141.0 211.6

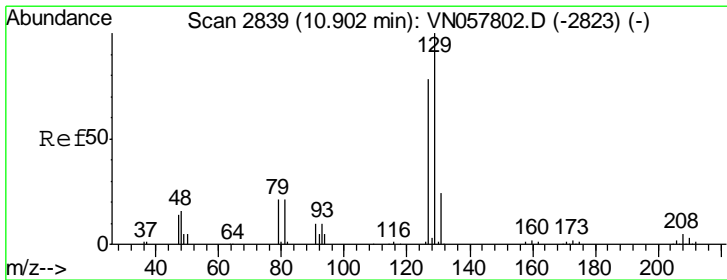
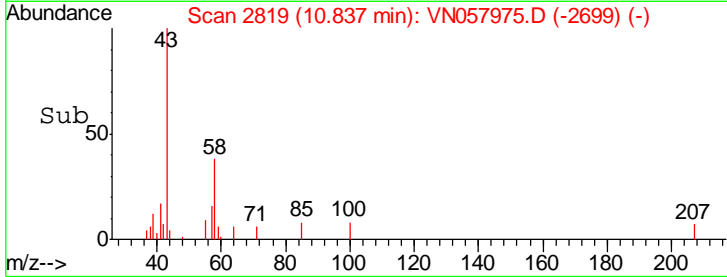
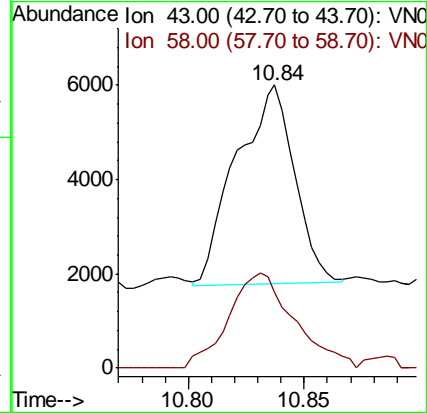
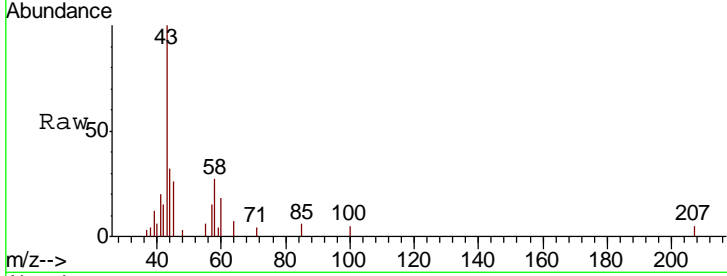




#59  
 2-Hexanone  
 Concen: 2.101 ug/l  
 RT: 10.84 min Scan# 2819  
 Delta R.T. 0.09 min  
 Lab File: VN057975.D  
 Acq: 12 Sep 2019 17:52

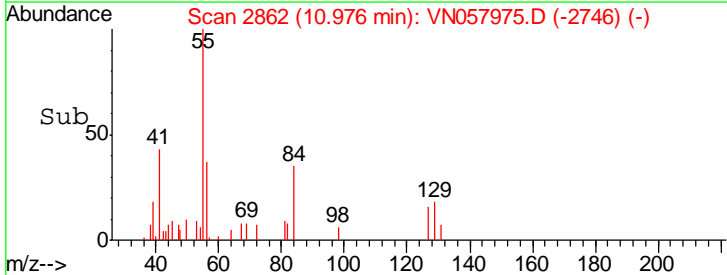
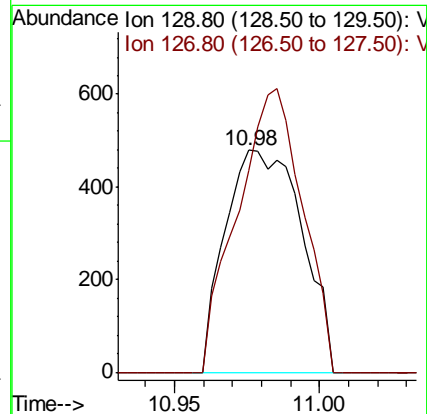
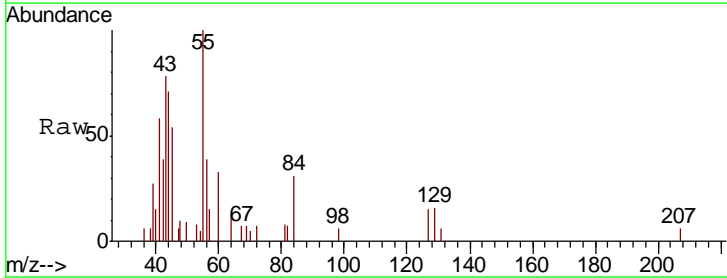
Instrument : MSVOA\_N  
 ClientSampled : IDW-DECON-WATER-091119

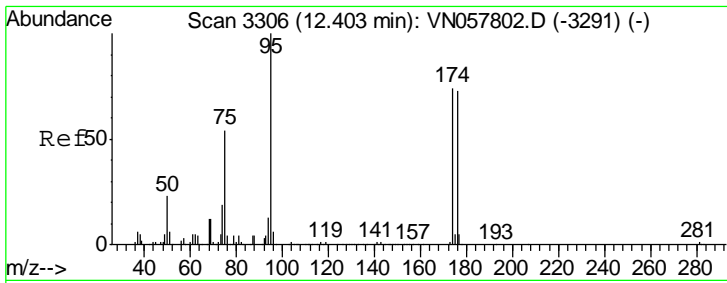
Tgt Ion: 43 Resp: 7381  
 Ion Ratio Lower Upper  
 43 100  
 58 53.7 25.6 76.8



#60  
 Dibromochloromethane  
 Concen: 0.259 ug/l  
 RT: 10.98 min Scan# 2862  
 Delta R.T. 0.07 min  
 Lab File: VN057975.D  
 Acq: 12 Sep 2019 17:52

Tgt Ion: 129 Resp: 881  
 Ion Ratio Lower Upper  
 129 100  
 127 108.6 38.6 116.0

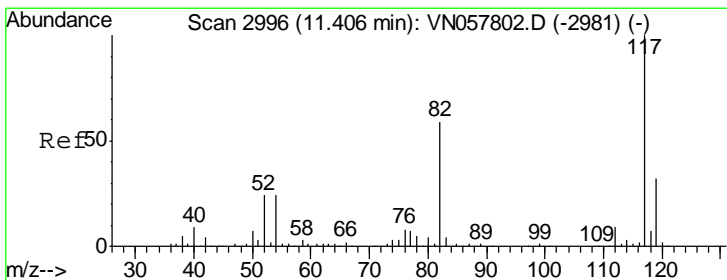
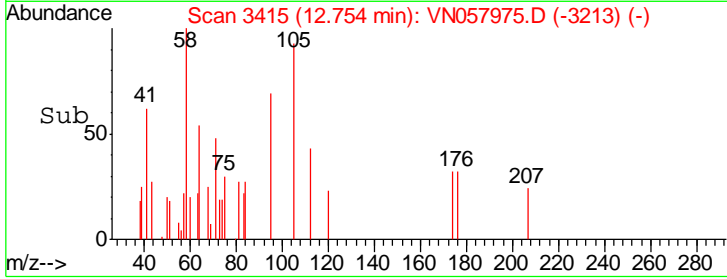
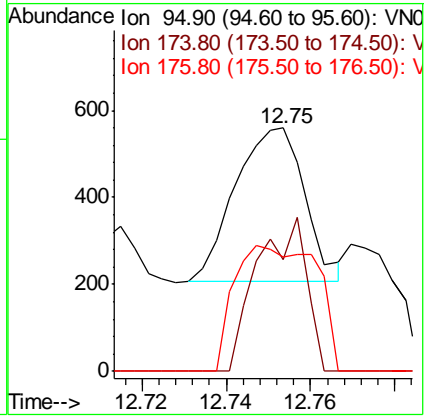
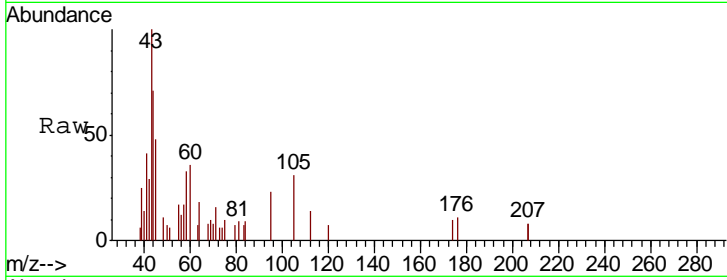




#62  
 4-Bromofluorobenzene  
 Concen: 0.075 ug/l  
 RT: 12.75 min Scan# 3415  
 Delta R.T. 0.35 min  
 Lab File: VN057975.D  
 Acq: 12 Sep 2019 17:52

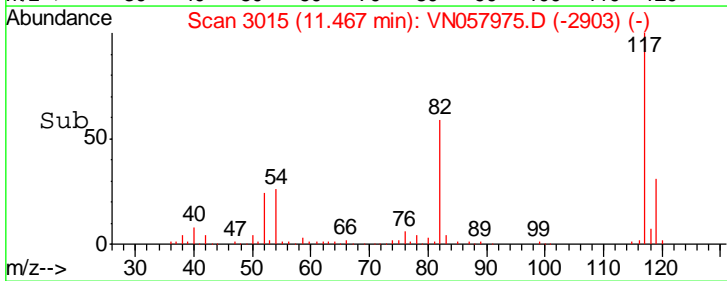
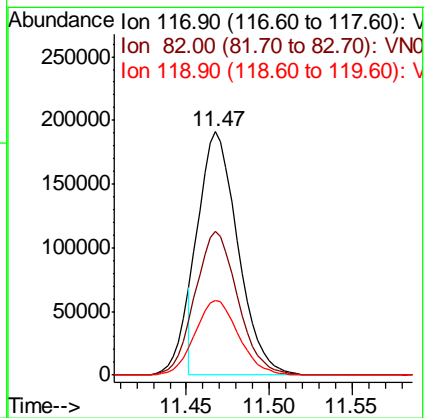
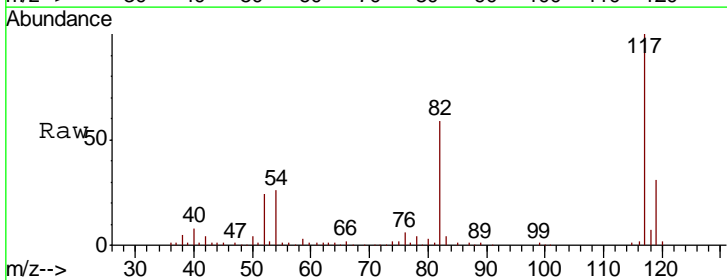
Instrument : MSVOA\_N  
 ClientSampled : IDW-DECON-WATER-091119

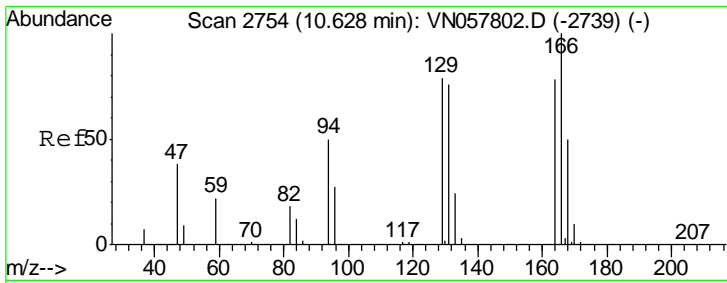
Tgt Ion	Resp	Lower	Upper
95	400		
174	71.3	0.0	150.2
176	97.8	0.0	146.0



#63  
 Chlorobenzene-d5  
 Concen: 50.000 ug/l  
 RT: 11.47 min Scan# 3015  
 Delta R.T. 0.06 min  
 Lab File: VN057975.D  
 Acq: 12 Sep 2019 17:52

Tgt Ion	Resp	Lower	Upper
117	309422		
82	58.9	47.2	70.8
119	30.8	25.3	37.9



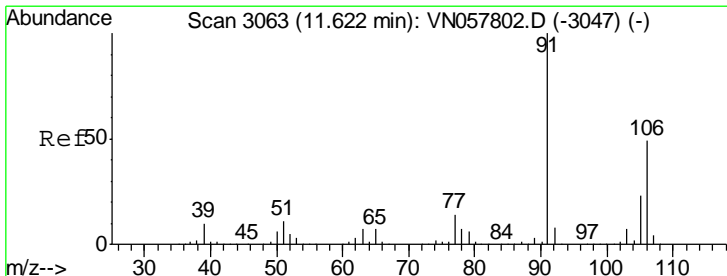
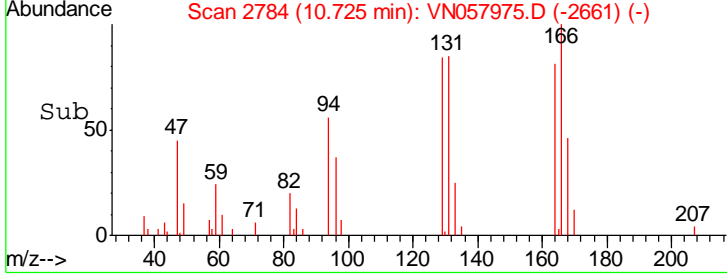
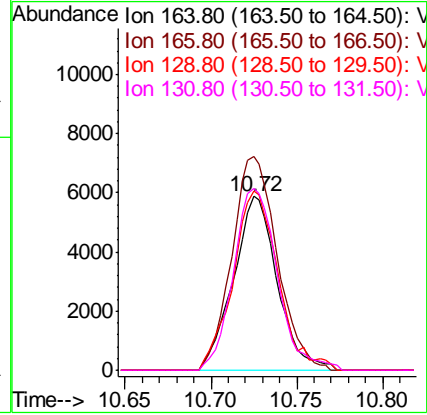
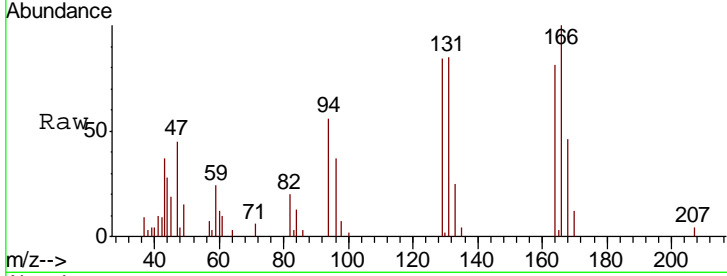


#64  
 Tetrachloroethene  
 Concen: 4.571 ug/l  
 RT: 10.72 min Scan# 2784  
 Delta R.T. 0.10 min  
 Lab File: VN057975.D  
 Acq: 12 Sep 2019 17:52

**Instrument :**  
 MSVOA\_N  
**ClientSampled :**  
 IDW-DECON-WATER-091119

Tgt Ion:164 Resp: 10443

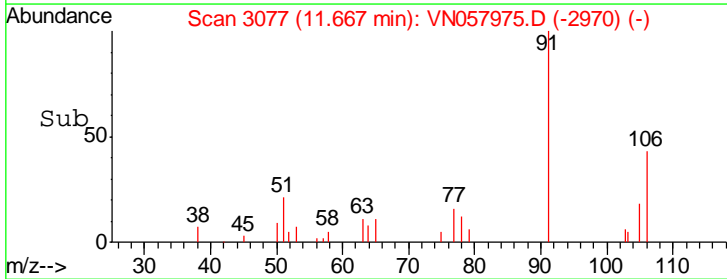
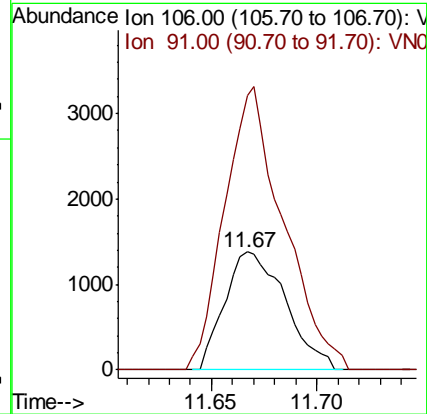
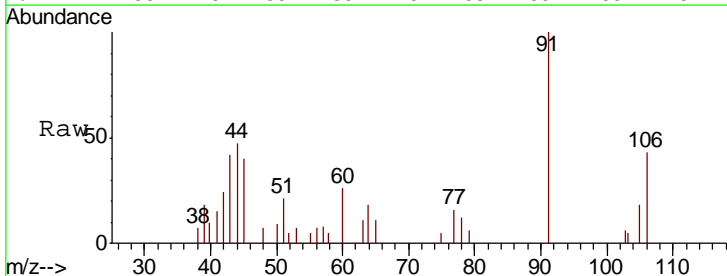
Ion	Ratio	Lower	Upper
164	100		
166	123.0	102.2	153.2
129	103.4	80.8	121.2
131	105.0	77.4	116.2

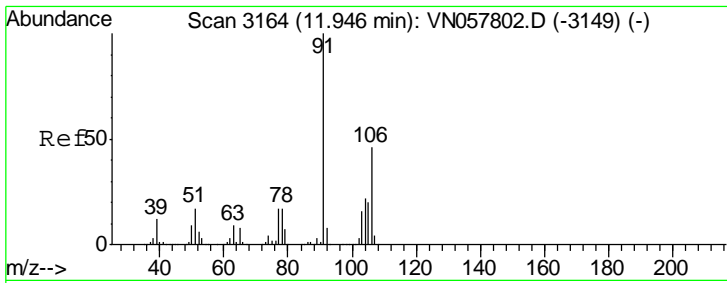


#68  
 m/p-Xylenes  
 Concen: 0.533 ug/l  
 RT: 11.67 min Scan# 3077  
 Delta R.T. 0.05 min  
 Lab File: VN057975.D  
 Acq: 12 Sep 2019 17:52

Tgt Ion:106 Resp: 2769

Ion	Ratio	Lower	Upper
106	100		
91	231.3	165.8	248.6

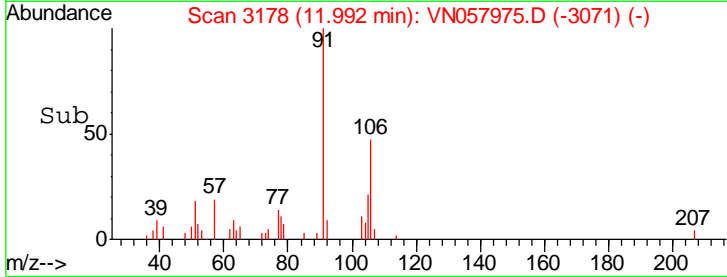
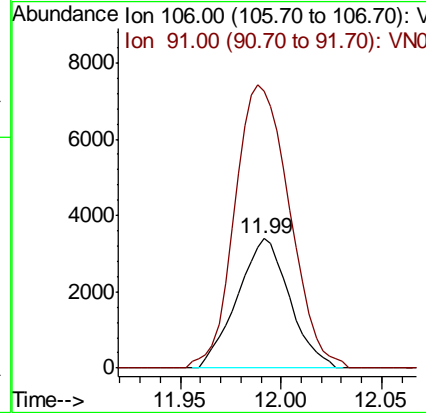
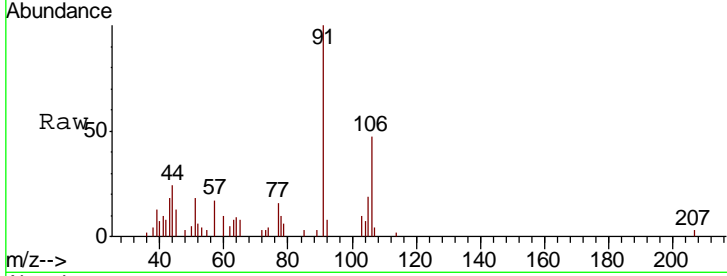




#69  
 o-Xylene  
 Concen: 1.190 ug/l  
 RT: 11.99 min Scan# 3178  
 Delta R.T. 0.05 min  
 Lab File: VN057975.D  
 Acq: 12 Sep 2019 17:52

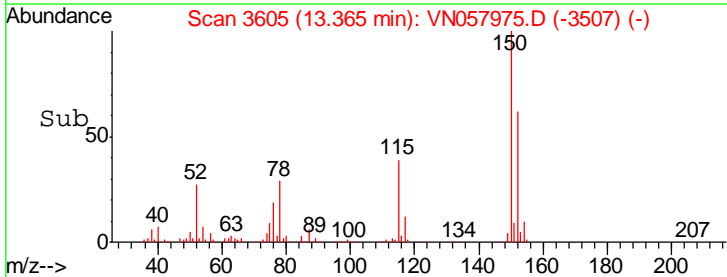
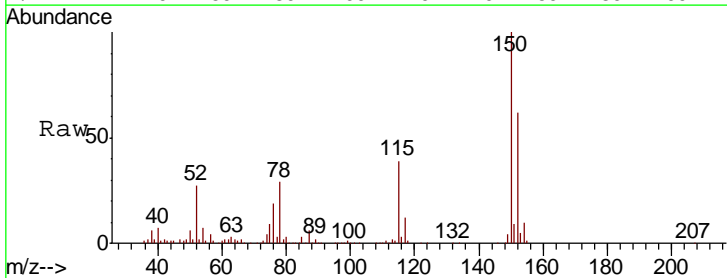
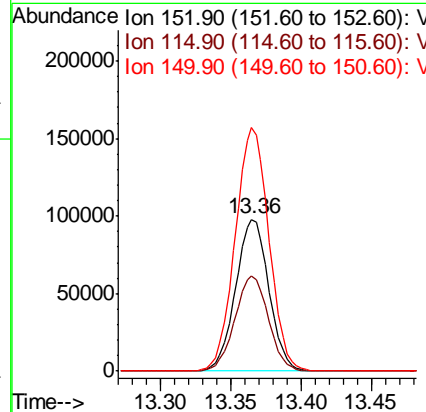
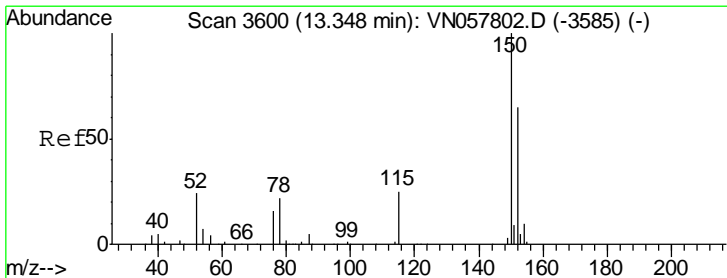
**Instrument :**  
 MSVOA\_N  
**ClientSampled :**  
 IDW-DECON-WATER-091119

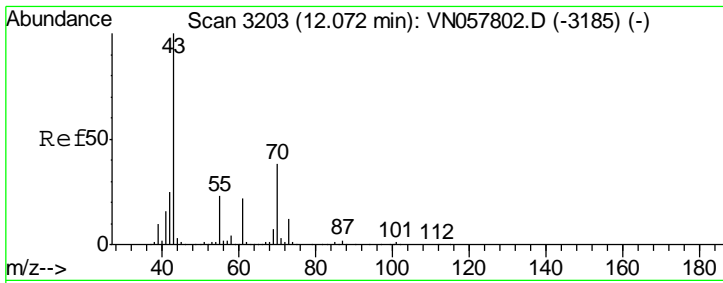
Tgt Ion:106 Resp: 6148  
 Ion Ratio Lower Upper  
 106 100  
 91 229.1 108.7 326.1



#72  
 1,4-Dichlorobenzene-d4  
 Concen: 50.000 ug/l  
 RT: 13.36 min Scan# 3605  
 Delta R.T. 0.02 min  
 Lab File: VN057975.D  
 Acq: 12 Sep 2019 17:52

Tgt Ion:152 Resp: 161065  
 Ion Ratio Lower Upper  
 152 100  
 115 63.1 30.3 91.0  
 150 162.9 0.0 352.4

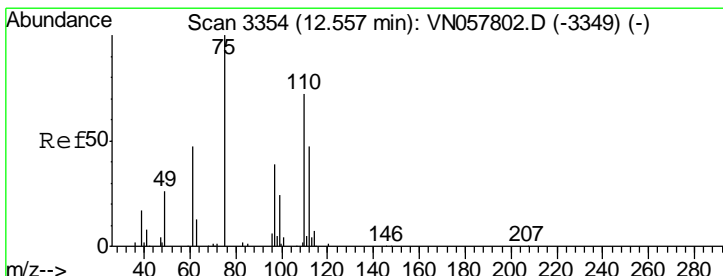
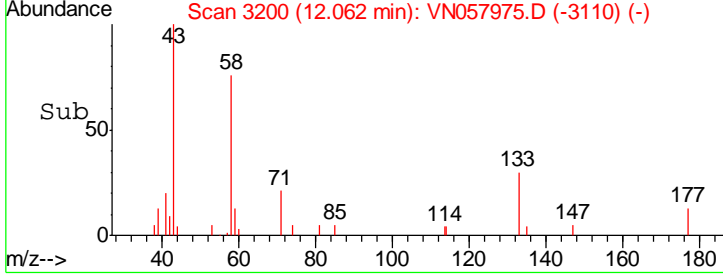
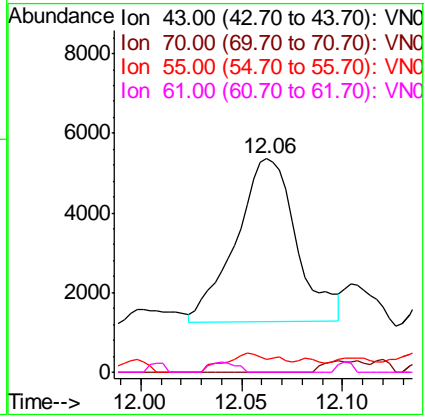
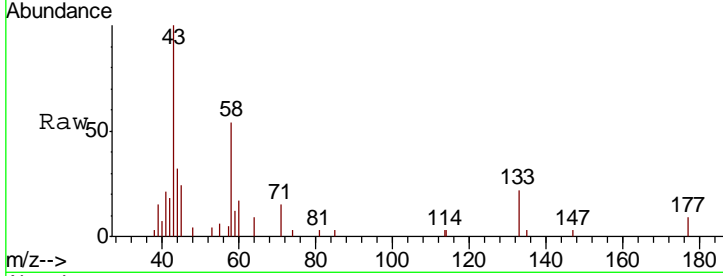




#74  
 N-amyI acetate  
 Concen: 1.585 ug/l  
 RT: 12.06 min Scan# 3200  
 Delta R.T. -0.01 min  
 Lab File: VN057975.D  
 Acq: 12 Sep 2019 17:52

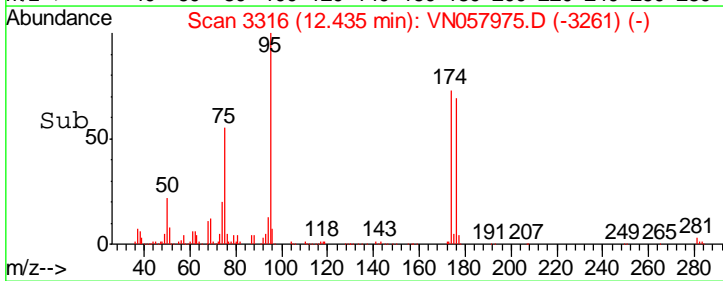
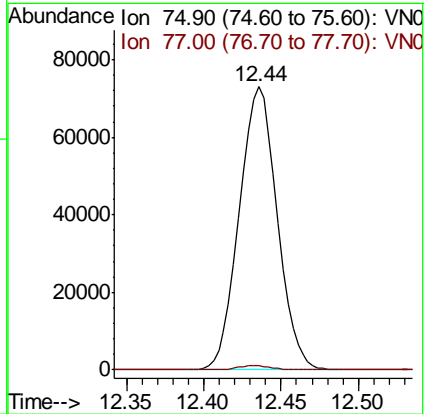
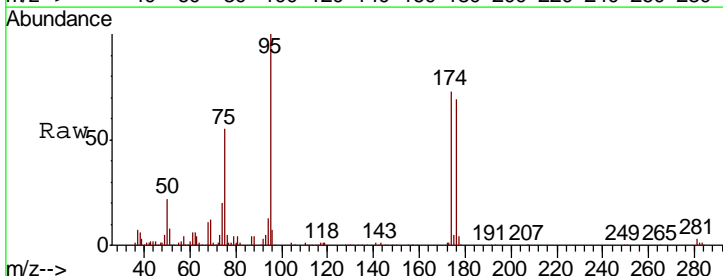
**Instrument :**  
 MSVOA\_N  
**ClientSampled :**  
 IDW-DECON-WATER-091119

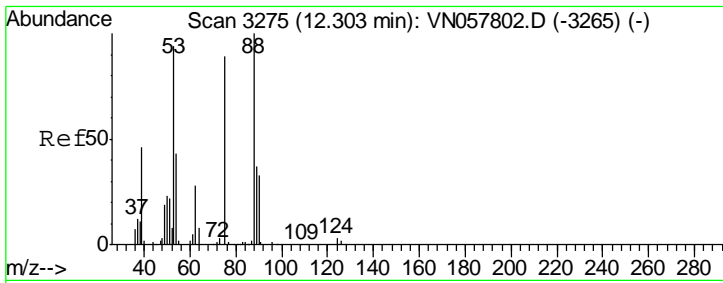
Tgt Ion	Resp	Lower	Upper
43	8619		
70	0.0	30.6	45.8#
55	10.3	18.6	27.8#
61	0.0	17.4	26.2#



#76  
 1,2,3-Trichloropropane  
 Concen: 34.260 ug/l  
 RT: 12.44 min Scan# 3316  
 Delta R.T. -0.12 min  
 Lab File: VN057975.D  
 Acq: 12 Sep 2019 17:52

Tgt Ion	Resp	Lower	Upper
75	124828		
77	1.3	0.0	0.0#

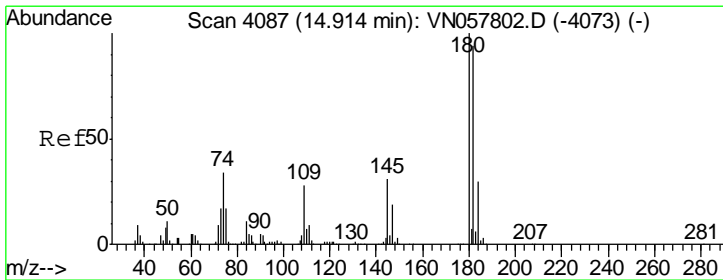
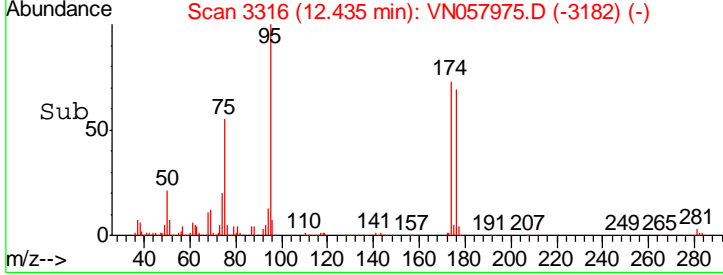
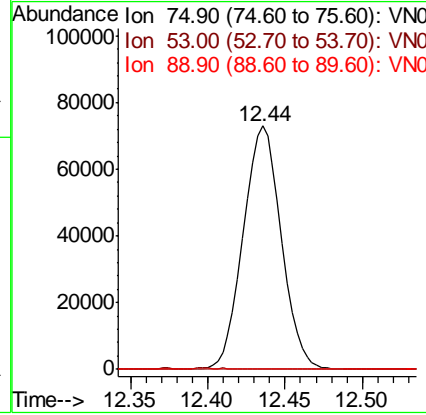
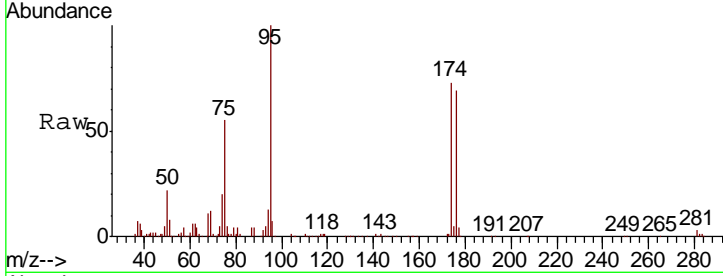




#81  
 trans-1,4-Dichloro-2-butene  
 Concen: 120.561 ug/l  
 RT: 12.44 min Scan# 3316  
 Delta R.T. 0.13 min  
 Lab File: VN057975.D  
 Acq: 12 Sep 2019 17:52

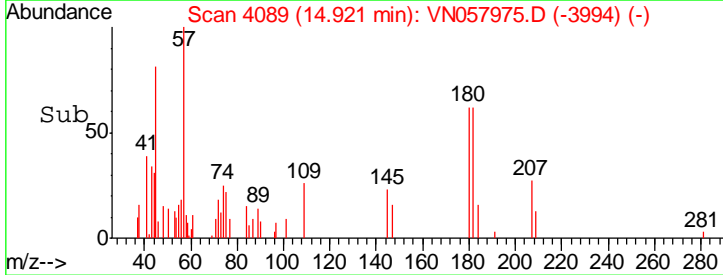
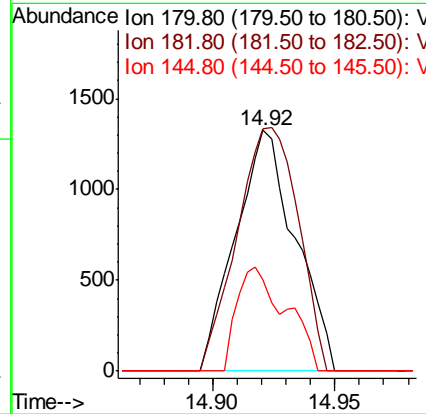
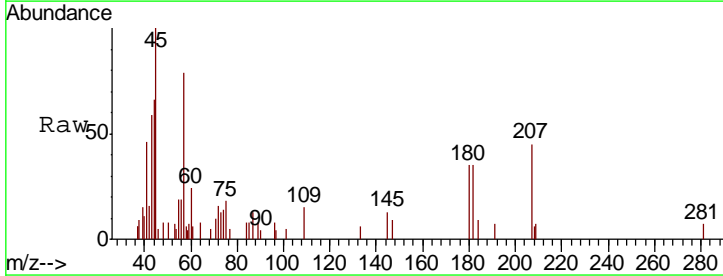
Instrument : MSVOA\_N  
 ClientSampled : IDW-DECON-WATER-091119

Tgt Ion	Resp	Lower	Upper
75	100		
53	0.0	88.4	132.6#
89	0.0	35.3	52.9#

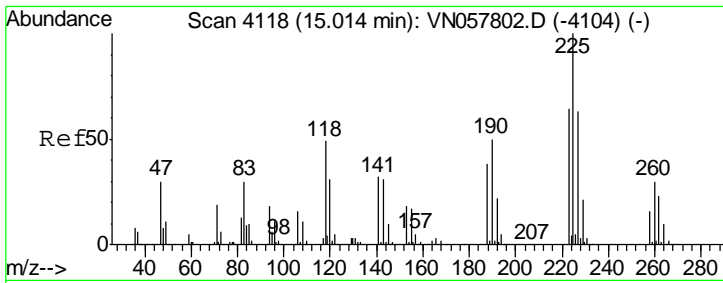


#93  
 1,2,4-Trichlorobenzene  
 Concen: 0.604 ug/l  
 RT: 14.92 min Scan# 4089  
 Delta R.T. 0.01 min  
 Lab File: VN057975.D  
 Acq: 12 Sep 2019 17:52

Tgt Ion	Resp	Lower	Upper
180	100		
182	103.6	46.9	140.8
145	35.4	14.9	44.7



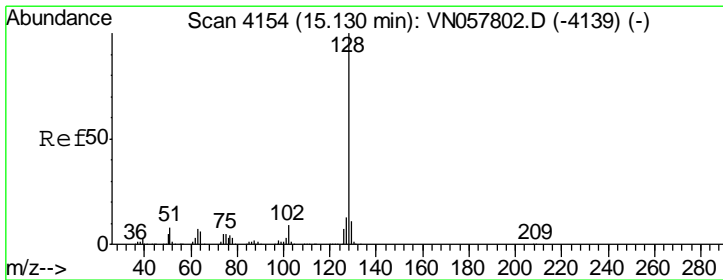
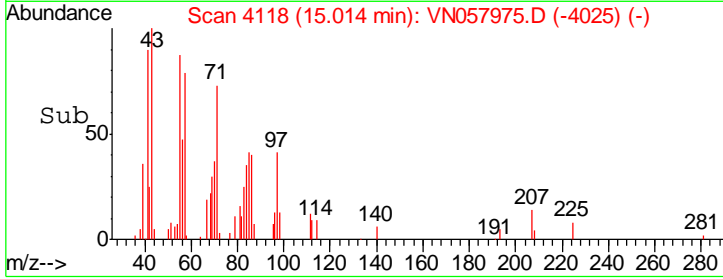
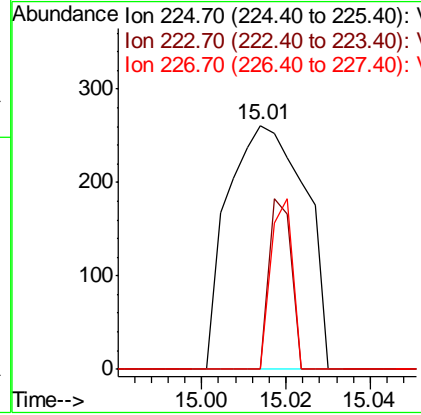
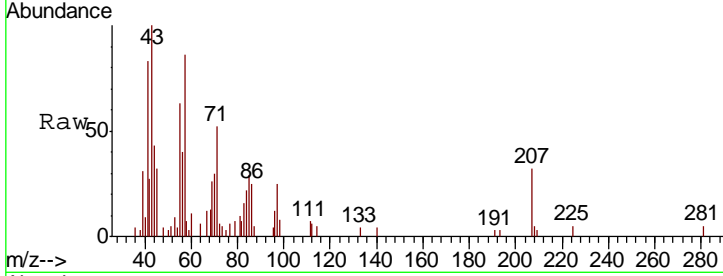




#94  
 Hexachlorobutadiene  
 Concen: 0.210 ug/l  
 RT: 15.01 min Scan# 4118  
 Delta R.T. 0.00 min  
 Lab File: VN057975.D  
 Acq: 12 Sep 2019 17:52

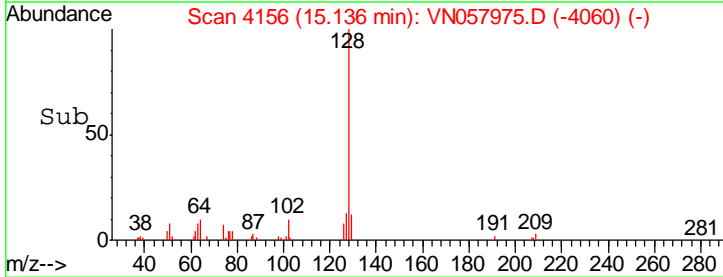
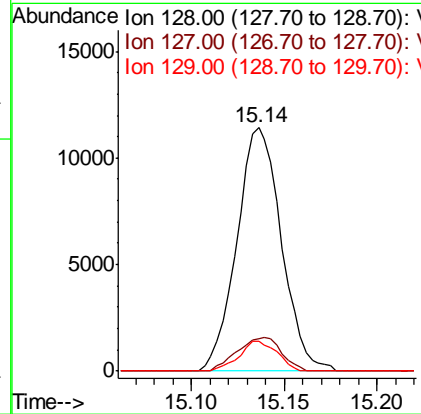
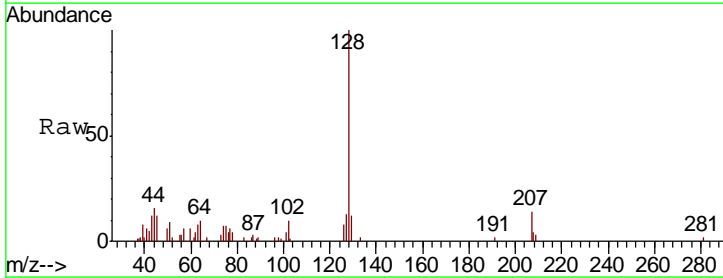
Instrument : MSVOA\_N  
 ClientSampled : IDW-DECON-WATER-091119

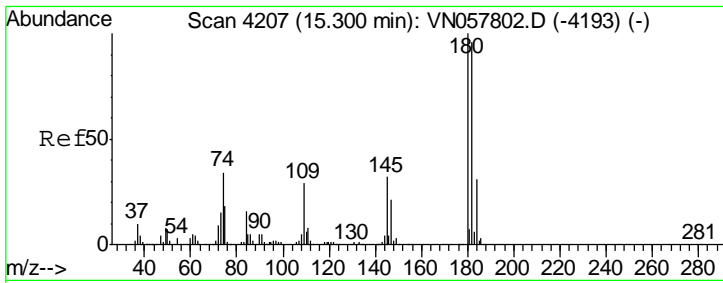
Tgt Ion	Resp	Lower	Upper
225	100		
223	20.1	32.4	97.2#
227	19.5	31.8	95.4#



#95  
 Naphthalene  
 Concen: 0.459 ug/l  
 RT: 15.14 min Scan# 4156  
 Delta R.T. 0.01 min  
 Lab File: VN057975.D  
 Acq: 12 Sep 2019 17:52

Tgt Ion	Resp	Lower	Upper
128	100		
127	13.6	10.3	15.5
129	10.5	8.6	12.8





#96  
 1,2,3-Trichlorobenzene  
 Concen: 1.851 ug/l  
 RT: 15.31 min Scan# 4209  
 Delta R.T. 0.01 min  
 Lab File: VN057975.D  
 Acq: 12 Sep 2019 17:52

**Instrument :**  
 MSVOA\_N  
**ClientSampleId :**  
 IDW-DECON-WATER-091119

Tgt Ion	Resp	Lower	Upper
180	100		
182	95.2	48.3	144.8
145	41.2	16.3	48.8

