

Data Path : Z:\voasrv\HPCHEM1\MSVOA_N\Data\VN091622\
 Data File : VN074509.D
 Acq On : 16 Sep 2022 14:45
 Operator : JC\MD
 Sample : N4626-07
 Misc : 5.0mL/MSVOA_N/WATER
 ALS Vial : 13 Sample Multiplier: 1

Instrument :
 MSVOA_N
 ClientSampleId :
 BP-VPB-RW5-GW-378-380RE

Quant Time: Sep 16 16:15:48 2022
 Quant Method : Z:\voasrv\HPCHEM1\MSVOA_N\methods\82N091522W.M
 Quant Title : SW846 8260
 QLast Update : Thu Sep 15 19:20:33 2022
 Response via : Initial Calibration

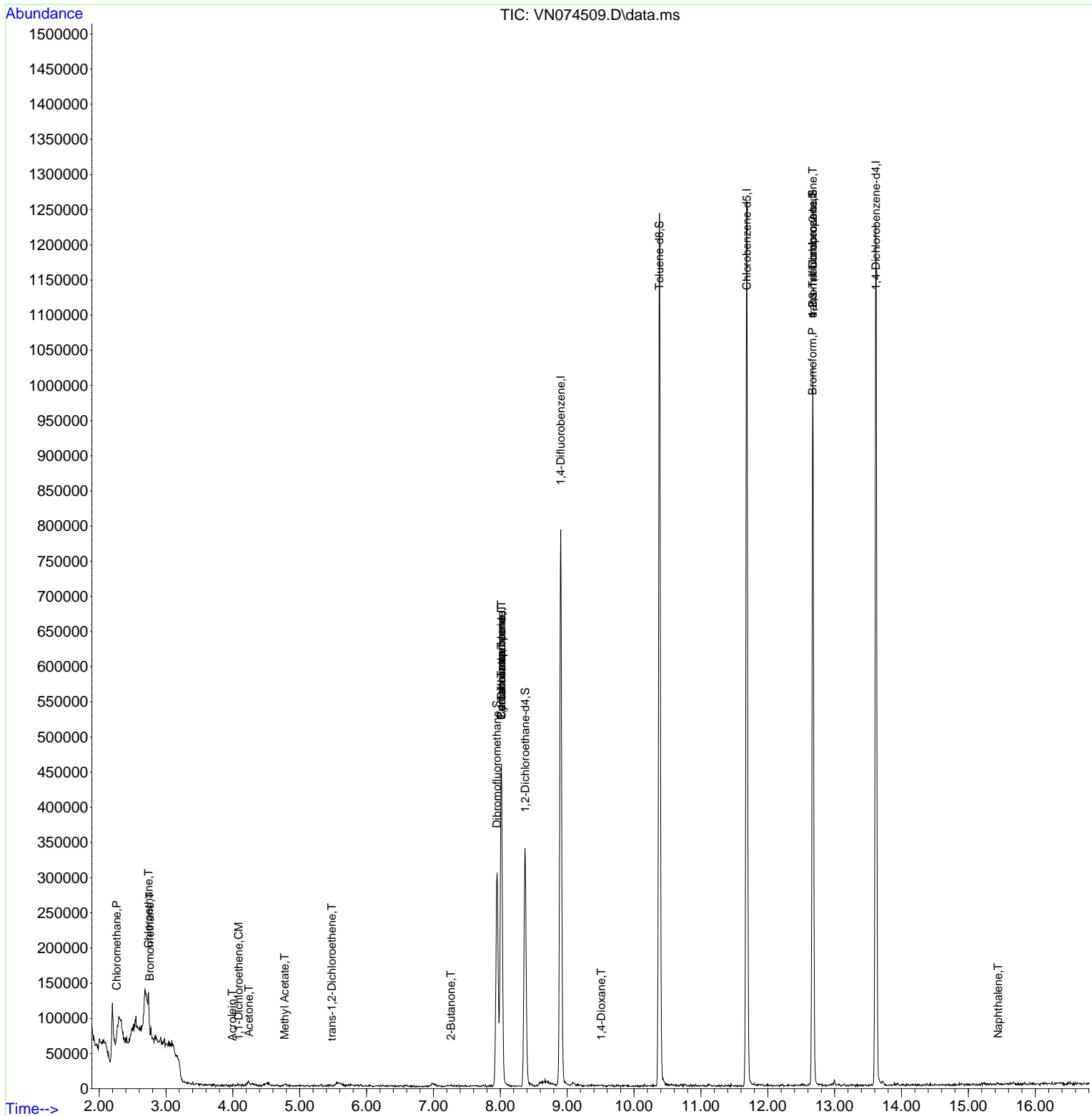
| Compound | R.T. | QIon | Response | Conc | Units | Dev(Min) |
|-------------------------------|--------|-------|----------|----------|--------|----------|
| ----- | | | | | | |
| Internal Standards | | | | | | |
| 1) Pentafluorobenzene | 8.016 | 168 | 317255 | 50.000 | ug/l | 0.00 |
| 34) 1,4-Difluorobenzene | 8.904 | 114 | 638446 | 50.000 | ug/l | 0.00 |
| 63) Chlorobenzene-d5 | 11.686 | 117 | 636473 | 50.000 | ug/l | 0.00 |
| 72) 1,4-Dichlorobenzene-d4 | 13.615 | 152 | 295858 | 50.000 | ug/l | 0.00 |
| System Monitoring Compounds | | | | | | |
| 33) 1,2-Dichloroethane-d4 | 8.375 | 65 | 254198 | 47.222 | ug/l | 0.00 |
| Spiked Amount | 50.000 | Range | 74 - 125 | Recovery | = | 94.440% |
| 35) Dibromofluoromethane | 7.951 | 113 | 213742 | 50.398 | ug/l | 0.00 |
| Spiked Amount | 50.000 | Range | 75 - 124 | Recovery | = | 100.800% |
| 50) Toluene-d8 | 10.380 | 98 | 789095 | 48.110 | ug/l | 0.00 |
| Spiked Amount | 50.000 | Range | 86 - 113 | Recovery | = | 96.220% |
| 62) 4-Bromofluorobenzene | 12.674 | 95 | 313339 | 55.778 | ug/l | 0.00 |
| Spiked Amount | 50.000 | Range | 83 - 123 | Recovery | = | 111.560% |
| Target Compounds | | | | | | |
| | | | | | | Qvalue |
| 3) Chloromethane | 2.263 | 50 | 1258 | 0.474 | ug/l # | 47 |
| 5) Bromomethane | 2.757 | 94 | 770 | 0.235 | ug/l # | 2 |
| 6) Chloroethane | 2.740 | 64 | 9915 | 2.336 | ug/l # | 42 |
| 12) 1,1-Dichloroethene | 4.087 | 96 | 433 | 0.787 | ug/l # | 1 |
| 13) Acrolein | 3.993 | 56 | 196 | 0.306 | ug/l # | 16 |
| 16) Acetone | 4.240 | 43 | 8181 | 2.375 | ug/l # | 82 |
| 18) Methyl Acetate | 4.775 | 43 | 2552 | 0.239 | ug/l # | 83 |
| 21) trans-1,2-Dichloroethene | 5.481 | 96 | 158 | 0.463 | ug/l # | 1 |
| 25) 2-Butanone | 7.263 | 43 | 1687 | 0.295 | ug/l # | 45 |
| 31) Cyclohexane | 8.016 | 56 | 10136 | 1.061 | ug/l # | 55 |
| 36) 1,1-Dichloropropene | 8.016 | 75 | 30854 | 4.110 | ug/l # | 52 |
| 38) Carbon Tetrachloride | 8.016 | 117 | 33892 | 4.890 | ug/l # | 17 |
| 49) 1,4-Dioxane | 9.510 | 88 | 963 | 6.221 | ug/l # | 76 |
| 71) Bromoform | 12.668 | 173 | 1063 | 0.249 | ug/l # | 28 |
| 76) 1,2,3-Trichloropropane | 12.674 | 75 | 186715 | 20.503 | ug/l # | 1 |
| 81) trans-1,4-Dichloro-2-b... | 12.674 | 75 | 186715 | 44.252 | ug/l # | 10 |
| 95) Naphthalene | 15.445 | 128 | 1194 | 1.635 | ug/l # | 69 |
| ----- | | | | | | |

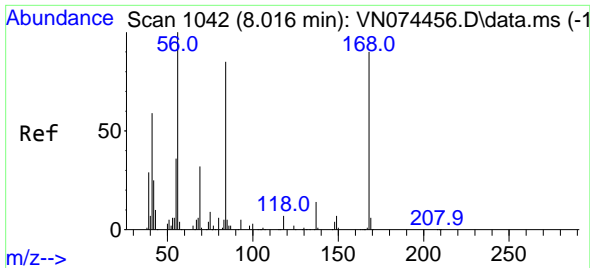
(#) = qualifier out of range (m) = manual integration (+) = signals summed

Data Path : Z:\voasrv\HPCHEM1\MSVOA_N\Data\VN091622\
 Data File : VN074509.D
 Acq On : 16 Sep 2022 14:45
 Operator : JC\MD
 Sample : N4626-07
 Misc : 5.0mL/MSVOA_N/WATER
 ALS Vial : 13 Sample Multiplier: 1

Instrument :
 MSVOA_N
 ClientSampleId :
 BP-VPB-RW5-GW-378-380RE

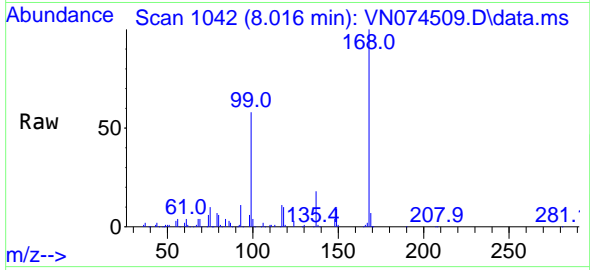
Quant Time: Sep 16 16:15:48 2022
 Quant Method : Z:\voasrv\HPCHEM1\MSVOA_N\methods\82N091522W.M
 Quant Title : SW846 8260
 QLast Update : Thu Sep 15 19:20:33 2022
 Response via : Initial Calibration



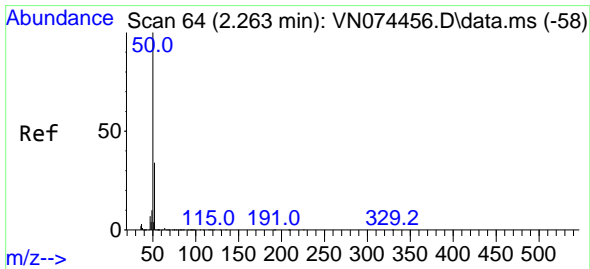
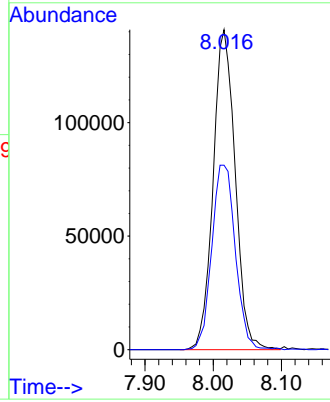
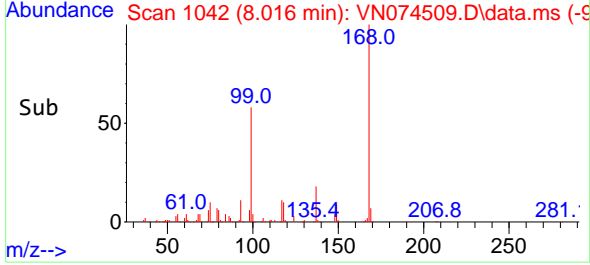


#1
 Pentafluorobenzene
 Concen: 50.000 ug/l
 RT: 8.016 min Scan# 1042
 Delta R.T. -0.000 min
 Lab File: VN074509.D
 Acq: 16 Sep 2022 14:45

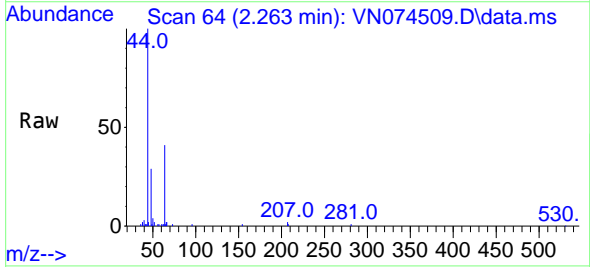
Instrument : MSVOA_N
 ClientSampleId : BP-VPB-RW5-GW-378-380RE



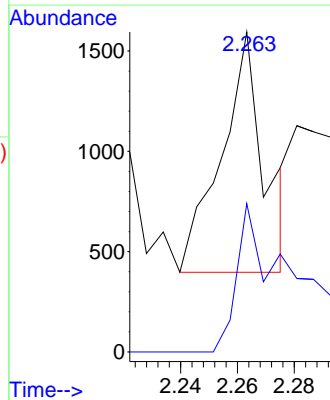
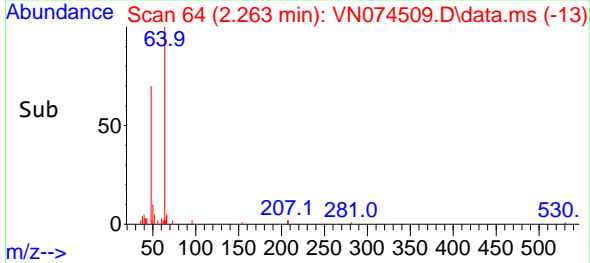
Tgt Ion:168 Resp: 317255
 Ion Ratio Lower Upper
 168 100
 99 57.5 42.3 63.5

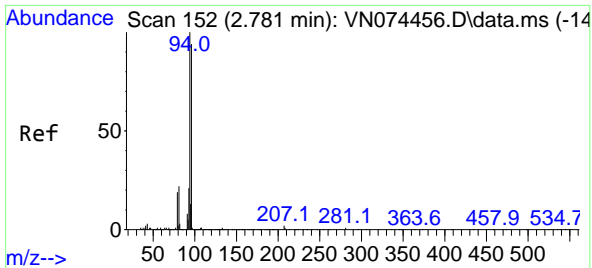


#3
 Chloromethane
 Concen: 0.474 ug/l
 RT: 2.263 min Scan# 64
 Delta R.T. 0.000 min
 Lab File: VN074509.D
 Acq: 16 Sep 2022 14:45



Tgt Ion: 50 Resp: 1258
 Ion Ratio Lower Upper
 50 100
 52 61.7 25.7 38.5#

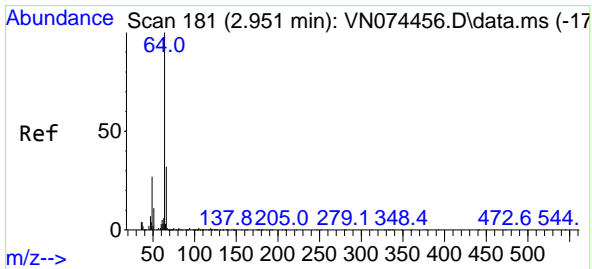
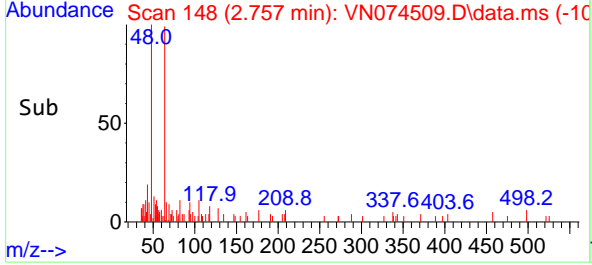
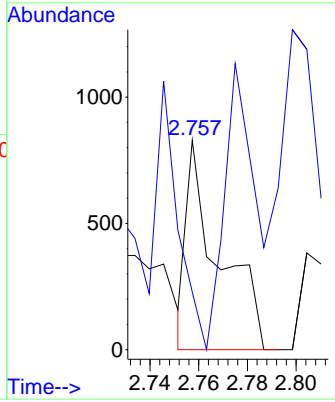
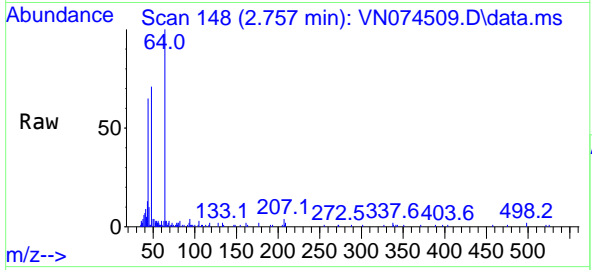




#5
 Bromomethane
 Concen: 0.235 ug/l
 RT: 2.757 min Scan# 145
 Delta R.T. -0.024 min
 Lab File: VN074509.D
 Acq: 16 Sep 2022 14:45

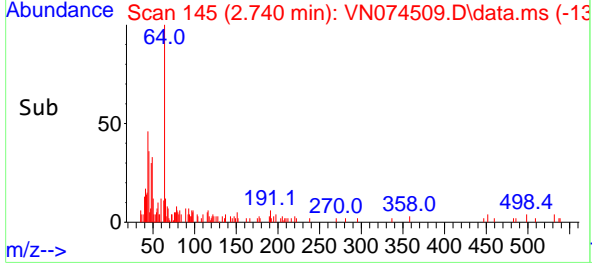
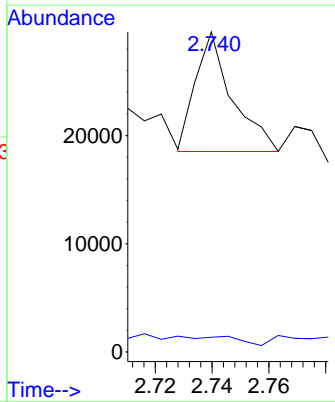
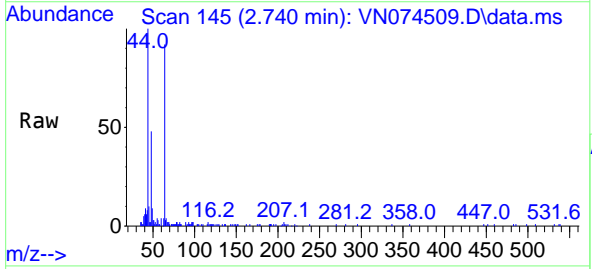
Instrument : MSVOA_N
 ClientSampleId : BP-VPB-RW5-GW-378-380RE

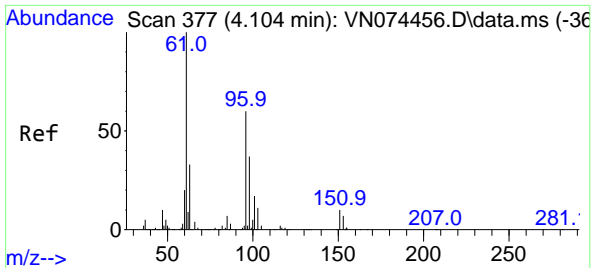
Tgt Ion: 94 Resp: 770
 Ion Ratio Lower Upper
 94 100
 96 0.0 76.0 114.0#



#6
 Chloroethane
 Concen: 2.336 ug/l
 RT: 2.740 min Scan# 145
 Delta R.T. -0.211 min
 Lab File: VN074509.D
 Acq: 16 Sep 2022 14:45

Tgt Ion: 64 Resp: 9915
 Ion Ratio Lower Upper
 64 100
 66 0.0 26.2 39.4#



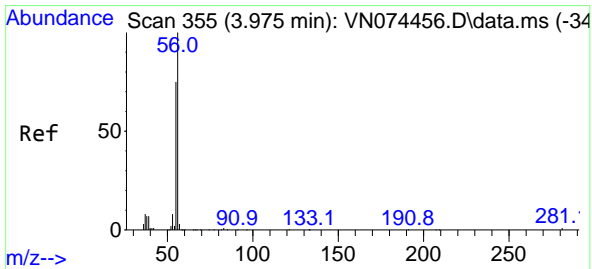
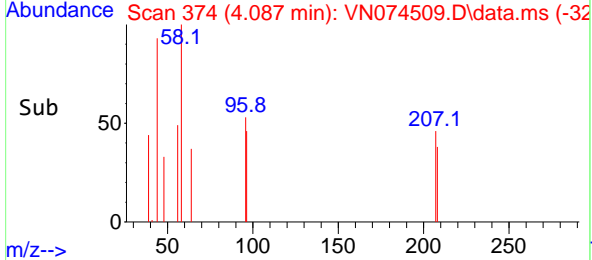
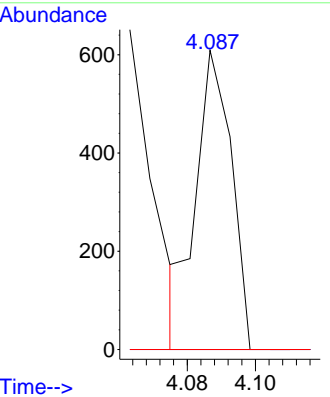
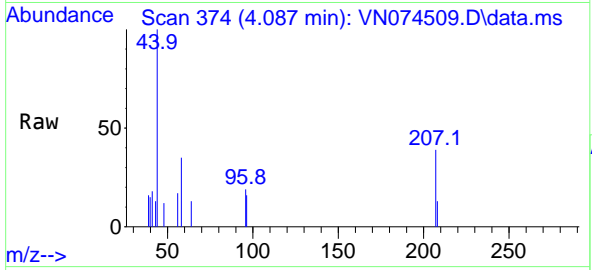


#12
 1,1-Dichloroethene
 Concen: 0.787 ug/l
 RT: 4.087 min Scan# 31
 Delta R.T. -0.017 min
 Lab File: VN074509.D
 Acq: 16 Sep 2022 14:45

Instrument : MSVOA_N
 ClientSampleId : BP-VPB-RW5-GW-378-380RE

Tgt Ion: 96 Resp: 433

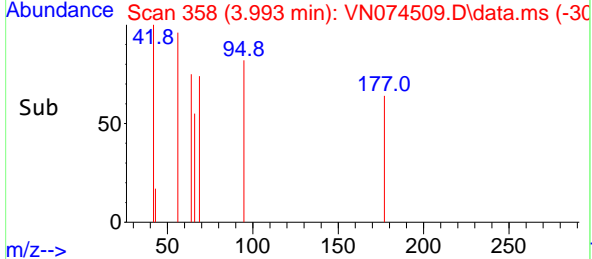
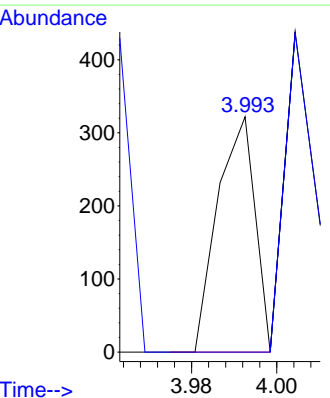
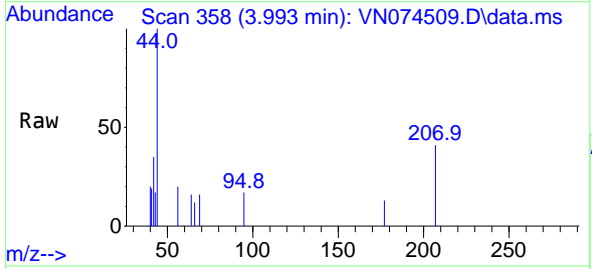
| Ion | Ratio | Lower | Upper |
|-----|-------|-------|--------|
| 96 | 100 | | |
| 61 | 0.0 | 127.6 | 191.4# |
| 98 | 0.0 | 51.2 | 76.8# |

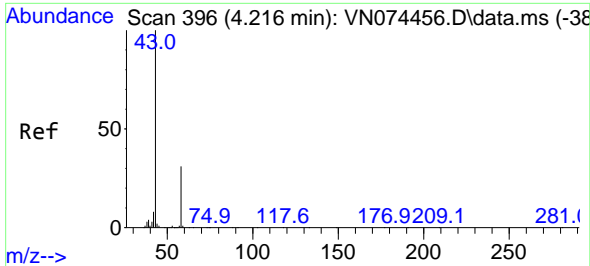


#13
 Acrolein
 Concen: 0.306 ug/l
 RT: 3.993 min Scan# 358
 Delta R.T. 0.018 min
 Lab File: VN074509.D
 Acq: 16 Sep 2022 14:45

Tgt Ion: 56 Resp: 196

| Ion | Ratio | Lower | Upper |
|-----|-------|-------|-------|
| 56 | 100 | | |
| 55 | 0.0 | 54.8 | 82.2# |

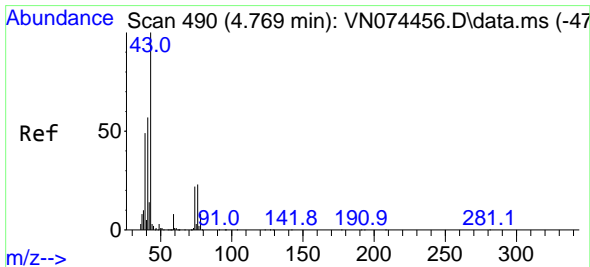
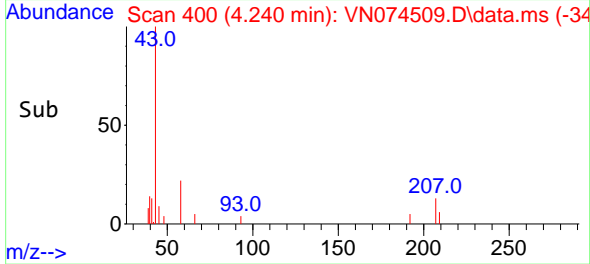
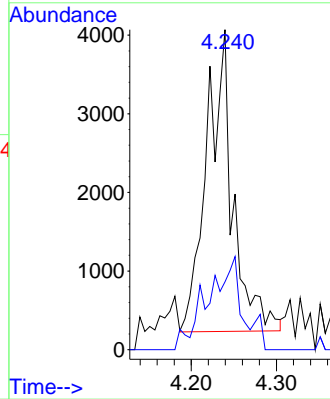
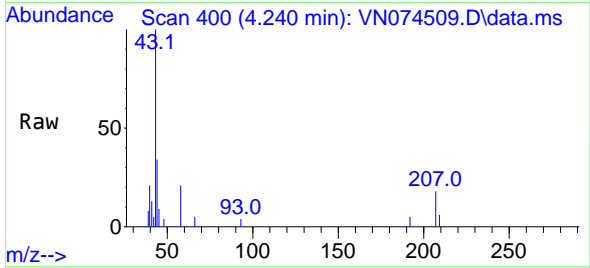




#16
 Acetone
 Concen: 2.375 ug/l
 RT: 4.240 min Scan# 400
 Delta R.T. 0.024 min
 Lab File: VN074509.D
 Acq: 16 Sep 2022 14:45

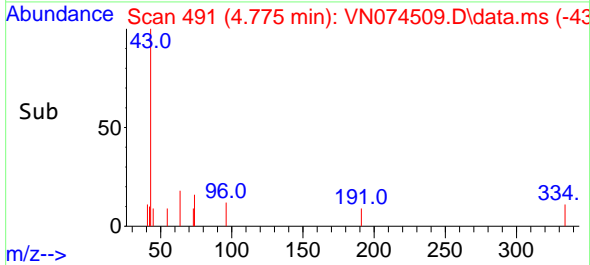
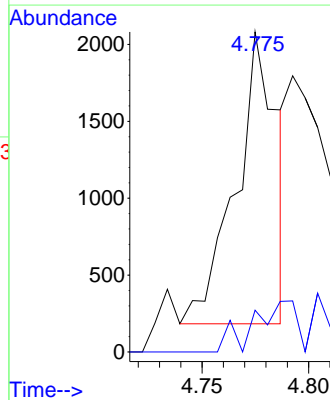
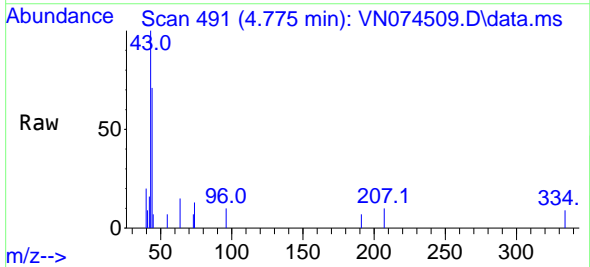
Instrument : MSVOA_N
 Client Sample Id : BP-VPB-RW5-GW-378-380RE

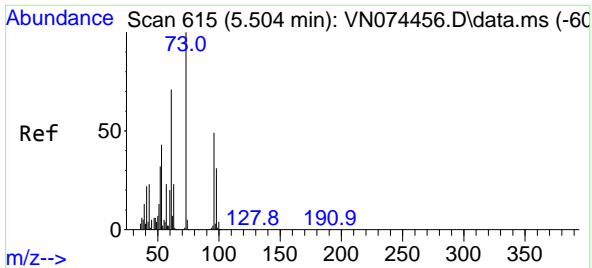
Tgt Ion: 43 Resp: 8181
 Ion Ratio Lower Upper
 43 100
 58 22.5 26.0 39.0#



#18
 Methyl Acetate
 Concen: 0.239 ug/l
 RT: 4.775 min Scan# 491
 Delta R.T. 0.006 min
 Lab File: VN074509.D
 Acq: 16 Sep 2022 14:45

Tgt Ion: 43 Resp: 2552
 Ion Ratio Lower Upper
 43 100
 74 18.2 21.6 32.4#



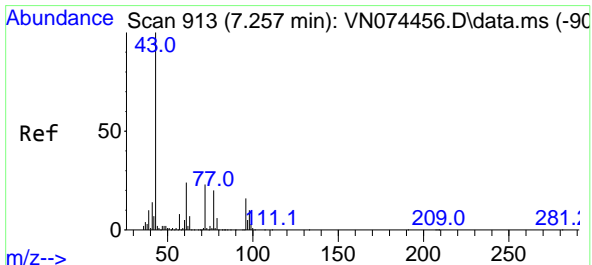
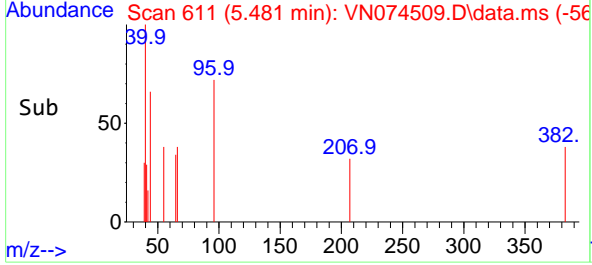
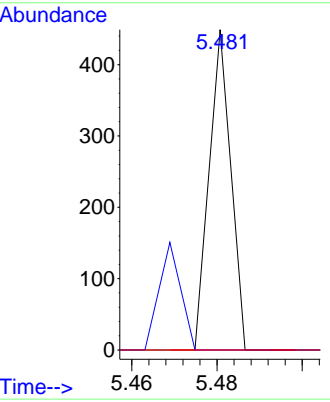
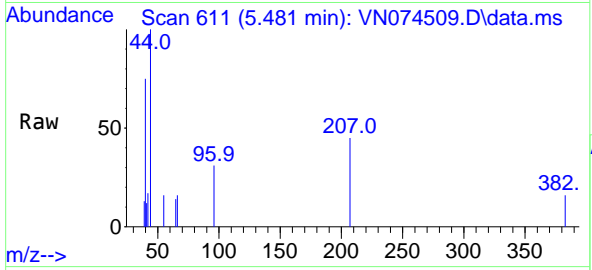


#21
 trans-1,2-Dichloroethene
 Concen: 0.463 ug/l
 RT: 5.481 min Scan# 615
 Delta R.T. -0.023 min
 Lab File: VN074509.D
 Acq: 16 Sep 2022 14:45

Instrument : MSVOA_N
 ClientSampleId : BP-VPB-RW5-GW-378-380RE

Tgt Ion: 96 Resp: 158

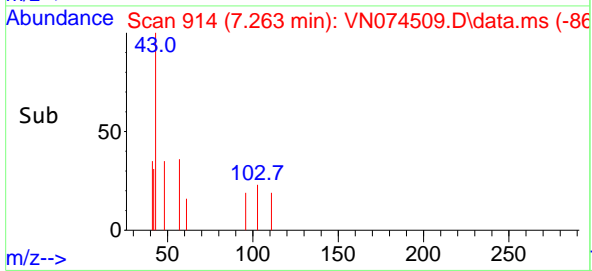
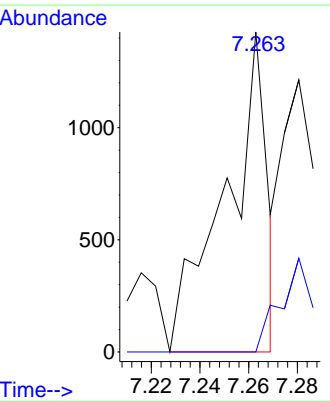
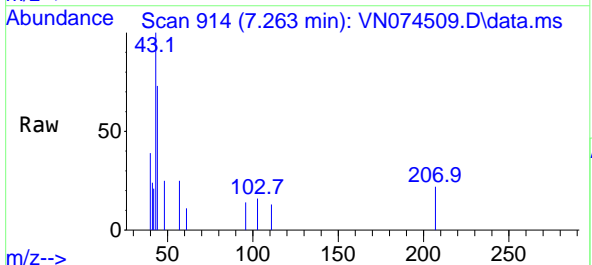
| Ion | Ratio | Lower | Upper |
|-----|-------|-------|--------|
| 96 | 100 | | |
| 61 | 0.0 | 105.8 | 158.8# |
| 98 | 0.0 | 50.3 | 75.5# |

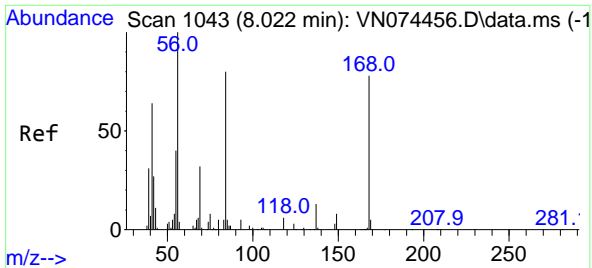


#25
 2-Butanone
 Concen: 0.295 ug/l
 RT: 7.263 min Scan# 914
 Delta R.T. 0.006 min
 Lab File: VN074509.D
 Acq: 16 Sep 2022 14:45

Tgt Ion: 43 Resp: 1687

| Ion | Ratio | Lower | Upper |
|-----|-------|-------|-------|
| 43 | 100 | | |
| 72 | 0.0 | 23.7 | 35.5# |



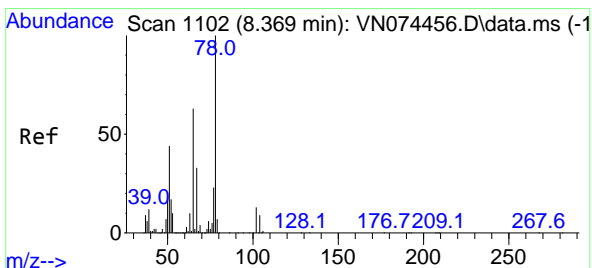
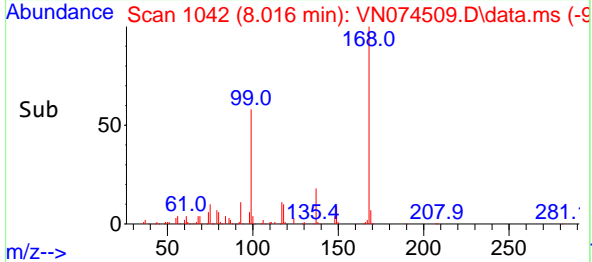
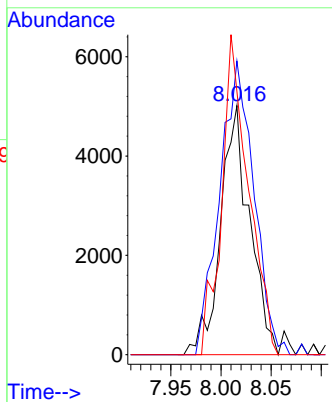
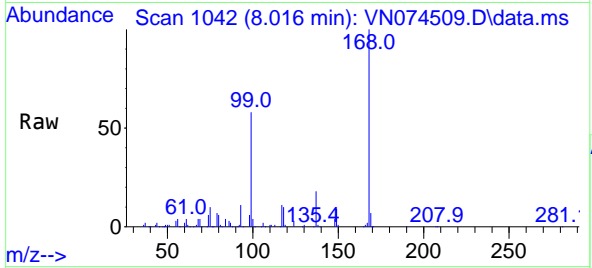


#31
 Cyclohexane
 Concen: 1.061 ug/l
 RT: 8.016 min Scan# 1042
 Delta R.T. -0.006 min
 Lab File: VN074509.D
 Acq: 16 Sep 2022 14:45

Instrument : MSVOA_N
 ClientSampleId : BP-VPB-RW5-GW-378-380RE

Tgt Ion: 56 Resp: 10136

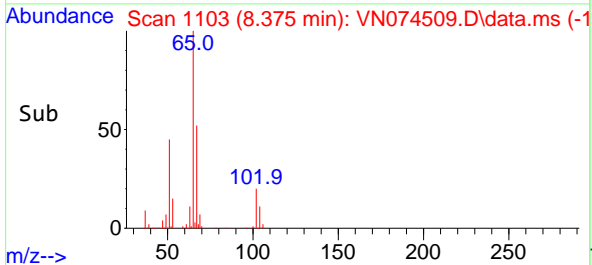
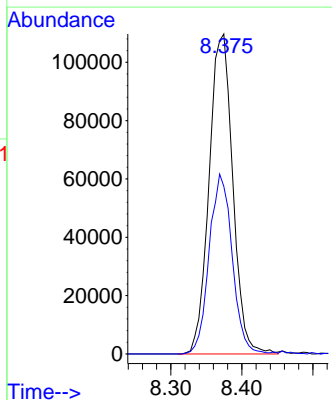
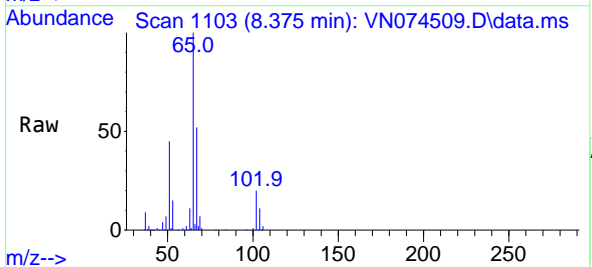
| Ion | Ratio | Lower | Upper |
|-----|-------|-------|-------|
| 56 | 100 | | |
| 69 | 117.8 | 27.8 | 41.8# |
| 84 | 105.6 | 76.9 | 115.3 |

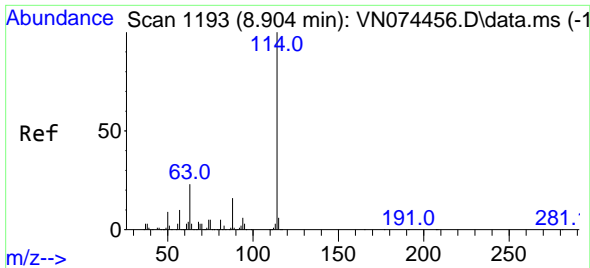


#33
 1,2-Dichloroethane-d4
 Concen: 47.222 ug/l
 RT: 8.375 min Scan# 1103
 Delta R.T. 0.006 min
 Lab File: VN074509.D
 Acq: 16 Sep 2022 14:45

Tgt Ion: 65 Resp: 254198

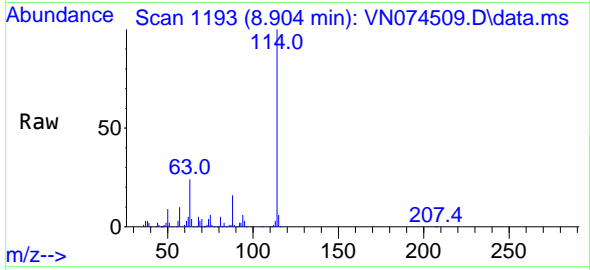
| Ion | Ratio | Lower | Upper |
|-----|-------|-------|-------|
| 65 | 100 | | |
| 67 | 54.5 | 0.0 | 104.8 |





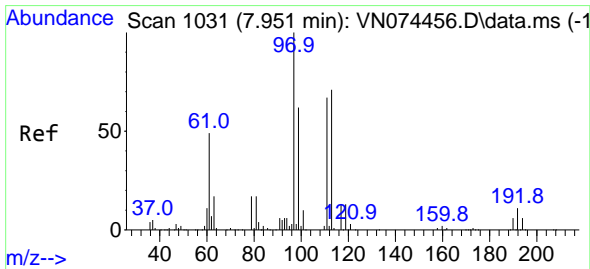
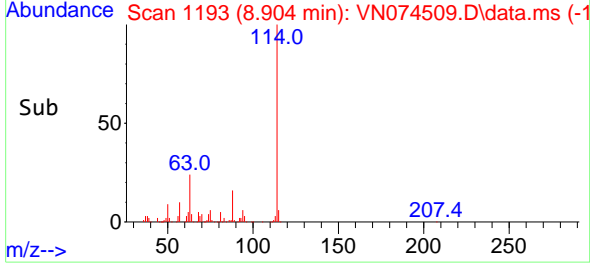
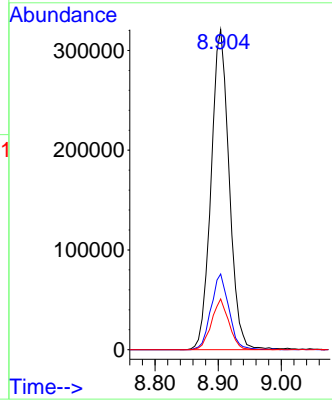
#34
 1,4-Difluorobenzene
 Concen: 50.000 ug/l
 RT: 8.904 min Scan# 1193
 Delta R.T. 0.000 min
 Lab File: VN074509.D
 Acq: 16 Sep 2022 14:45

Instrument : MSVOA_N
 ClientSampleId : BP-VPB-RW5-GW-378-380RE



Tgt Ion:114 Resp: 638446

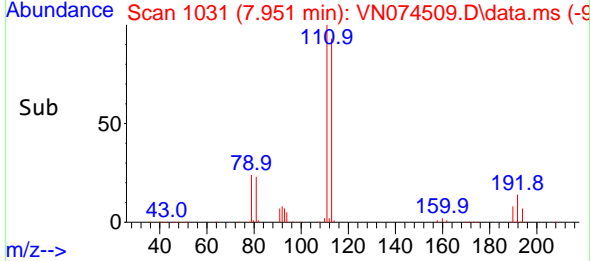
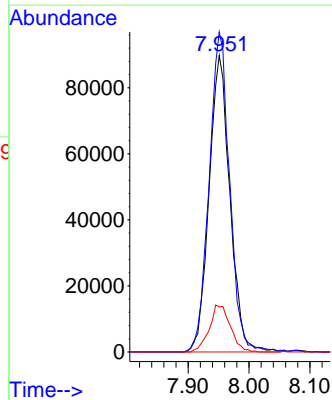
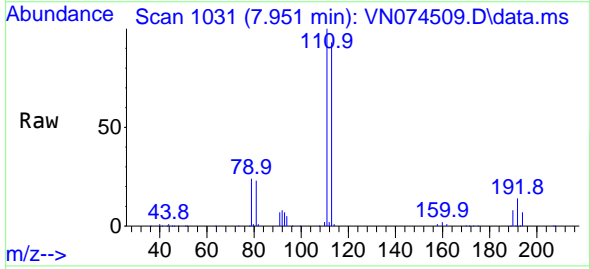
| Ion | Ratio | Lower | Upper |
|-----|-------|-------|-------|
| 114 | 100 | | |
| 63 | 23.6 | 0.0 | 40.0 |
| 88 | 15.8 | 0.0 | 32.6 |

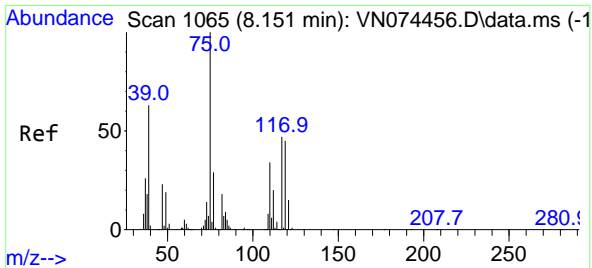


#35
 Dibromofluoromethane
 Concen: 50.398 ug/l
 RT: 7.951 min Scan# 1031
 Delta R.T. 0.000 min
 Lab File: VN074509.D
 Acq: 16 Sep 2022 14:45

Tgt Ion:113 Resp: 213742

| Ion | Ratio | Lower | Upper |
|-----|-------|-------|-------|
| 113 | 100 | | |
| 111 | 106.3 | 81.4 | 122.0 |
| 192 | 16.0 | 17.0 | 25.6 |



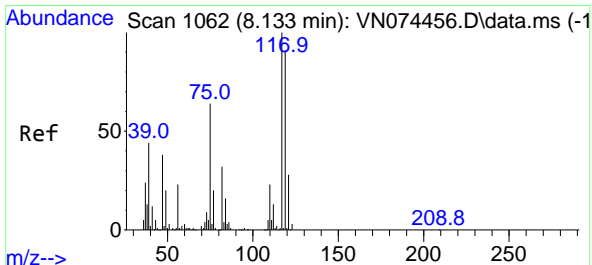
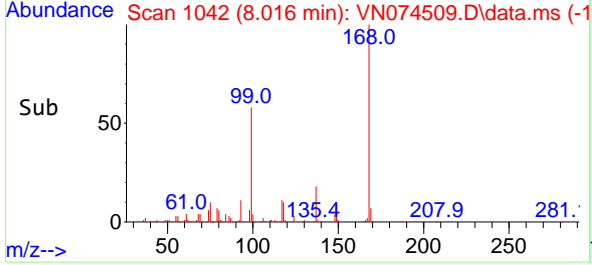
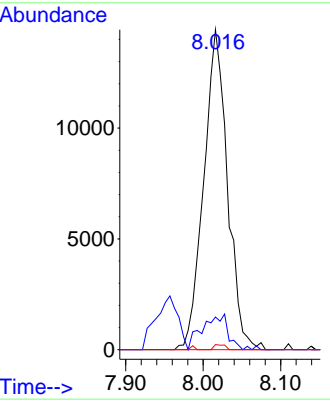
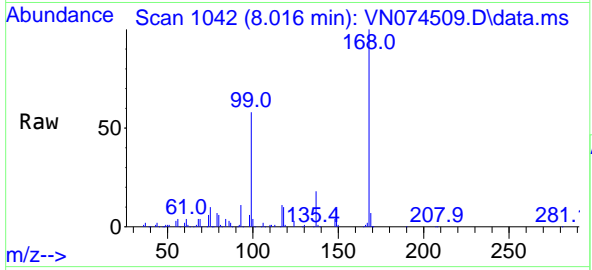


#36
 1,1-Dichloropropene
 Concen: 4.110 ug/l
 RT: 8.016 min Scan# 1042
 Delta R.T. -0.135 min
 Lab File: VN074509.D
 Acq: 16 Sep 2022 14:45

Instrument : MSVOA_N
 ClientSampleId : BP-VPB-RW5-GW-378-380RE

Tgt Ion: 75 Resp: 30854

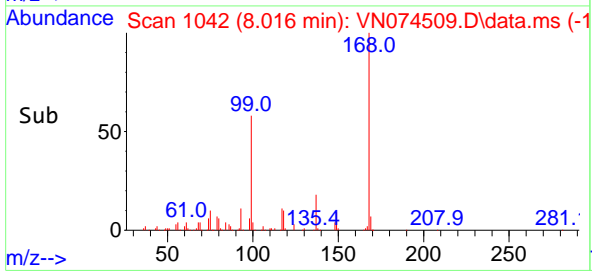
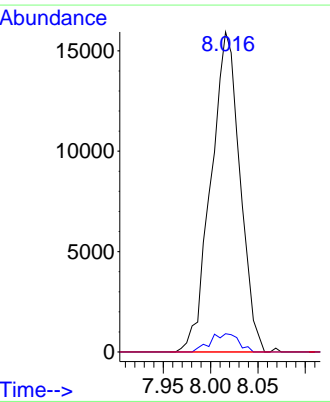
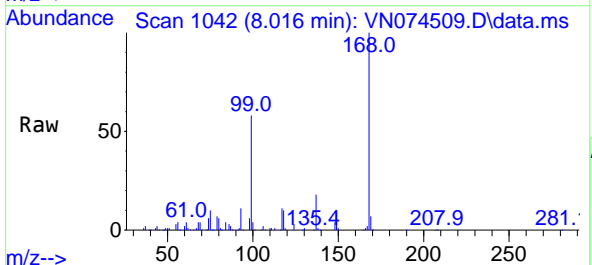
| Ion | Ratio | Lower | Upper |
|-----|-------|-------|-------|
| 75 | 100 | | |
| 110 | 11.8 | 18.3 | 54.8# |
| 77 | 0.7 | 25.1 | 37.7# |

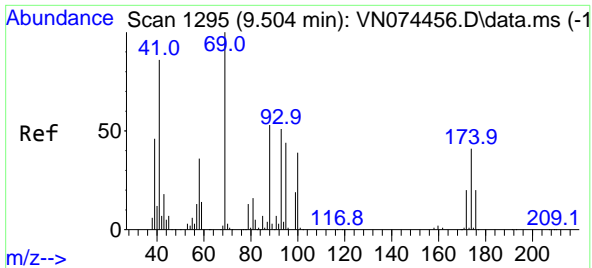


#38
 Carbon Tetrachloride
 Concen: 4.890 ug/l
 RT: 8.016 min Scan# 1042
 Delta R.T. -0.117 min
 Lab File: VN074509.D
 Acq: 16 Sep 2022 14:45

Tgt Ion: 117 Resp: 33892

| Ion | Ratio | Lower | Upper |
|-----|-------|-------|--------|
| 117 | 100 | | |
| 119 | 5.7 | 75.8 | 113.8# |
| 121 | 0.0 | 24.6 | 37.0# |



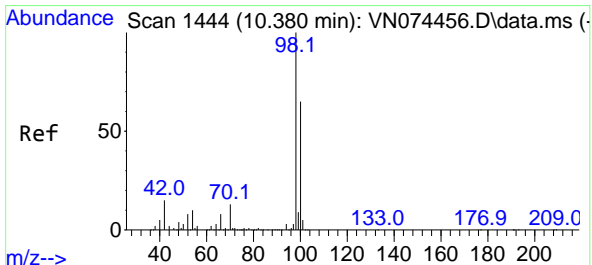
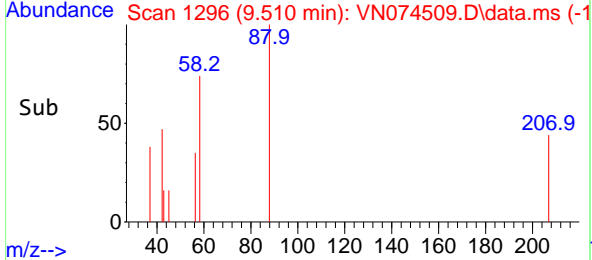
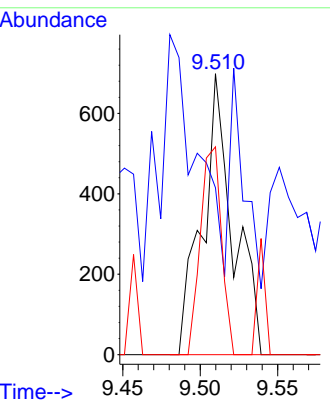
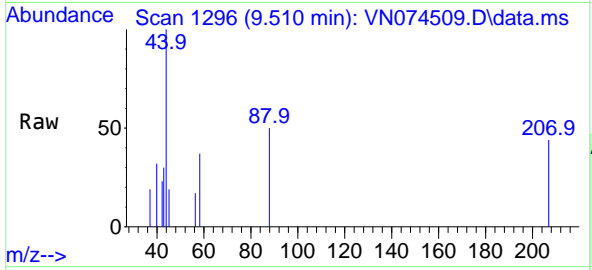


#49
 1,4-Dioxane
 Concen: 6.221 ug/l
 RT: 9.510 min Scan# 11
 Delta R.T. 0.006 min
 Lab File: VN074509.D
 Acq: 16 Sep 2022 14:45

Instrument : MSVOA_N
 ClientSampleId : BP-VPB-RW5-GW-378-380RE

Tgt Ion: 88 Resp: 963

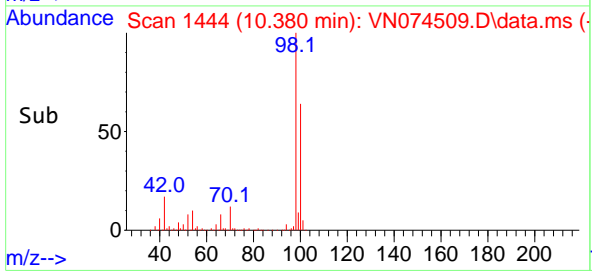
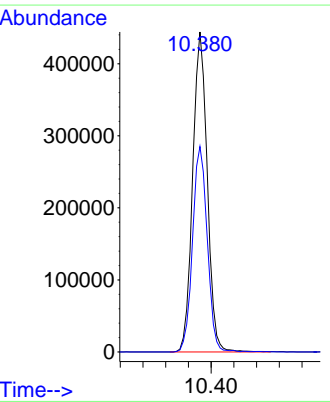
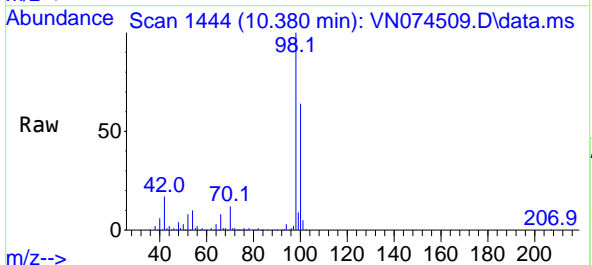
| Ion | Ratio | Lower | Upper |
|-----|-------|-------|-------|
| 88 | 100 | | |
| 43 | 41.7 | 20.2 | 30.4# |
| 58 | 50.9 | 54.2 | 81.4# |

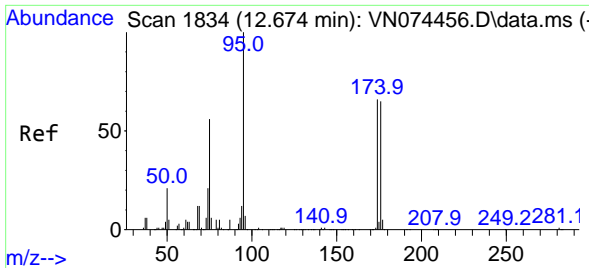


#50
 Toluene-d8
 Concen: 48.110 ug/l
 RT: 10.380 min Scan# 1444
 Delta R.T. 0.000 min
 Lab File: VN074509.D
 Acq: 16 Sep 2022 14:45

Tgt Ion: 98 Resp: 789095

| Ion | Ratio | Lower | Upper |
|-----|-------|-------|-------|
| 98 | 100 | | |
| 100 | 64.7 | 52.6 | 78.8 |

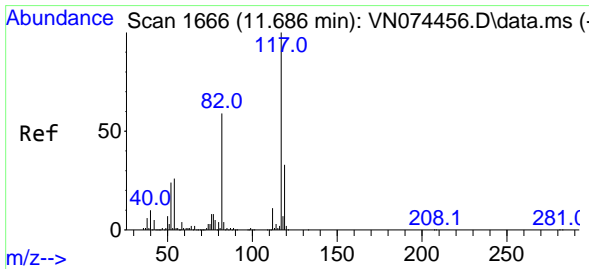
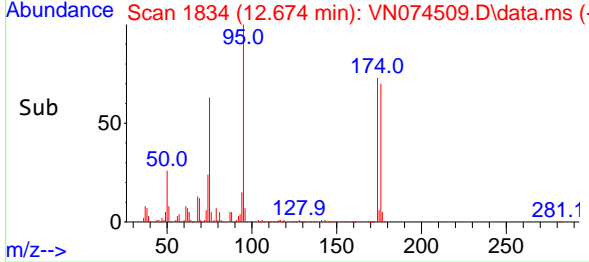
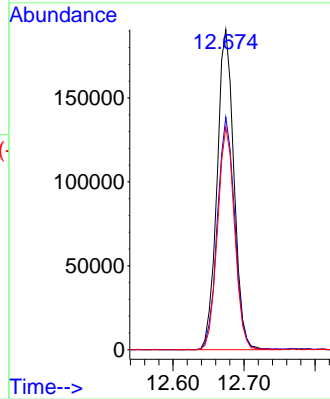
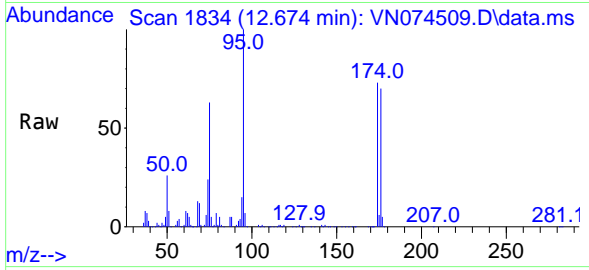




#62
 4-Bromofluorobenzene
 Concen: 55.778 ug/l
 RT: 12.674 min Scan# 1834
 Delta R.T. 0.000 min
 Lab File: VN074509.D
 Acq: 16 Sep 2022 14:45

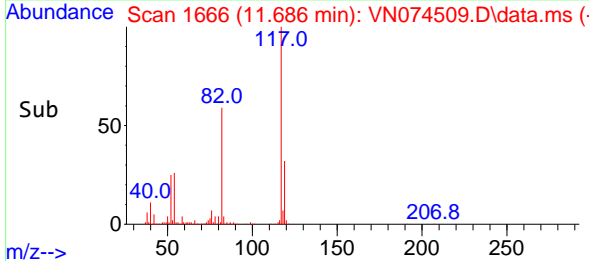
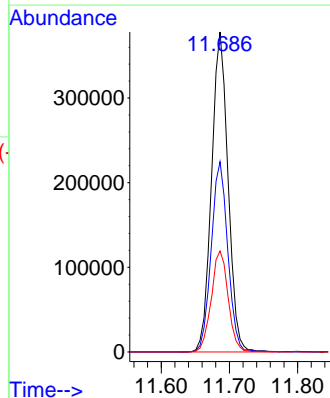
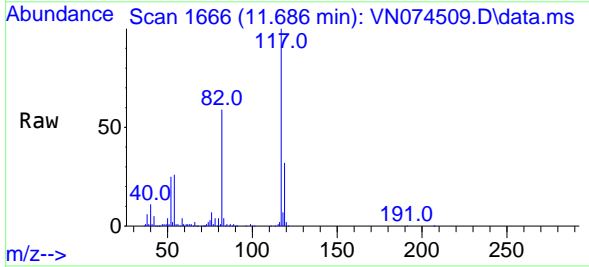
Instrument : MSVOA_N
 ClientSampleId : BP-VPB-RW5-GW-378-380RE

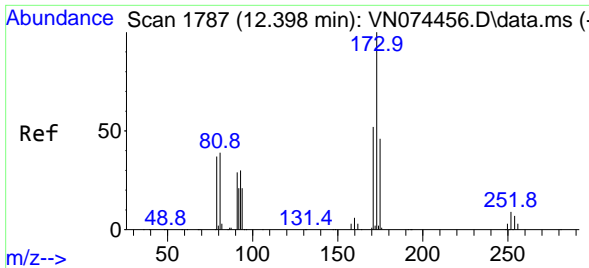
Tgt Ion: 95 Resp: 313339
 Ion Ratio Lower Upper
 95 100
 174 74.6 0.0 167.6
 176 69.8 0.0 163.4



#63
 Chlorobenzene-d5
 Concen: 50.000 ug/l
 RT: 11.686 min Scan# 1666
 Delta R.T. 0.000 min
 Lab File: VN074509.D
 Acq: 16 Sep 2022 14:45

Tgt Ion: 117 Resp: 636473
 Ion Ratio Lower Upper
 117 100
 82 59.5 44.2 66.2
 119 31.5 25.4 38.0



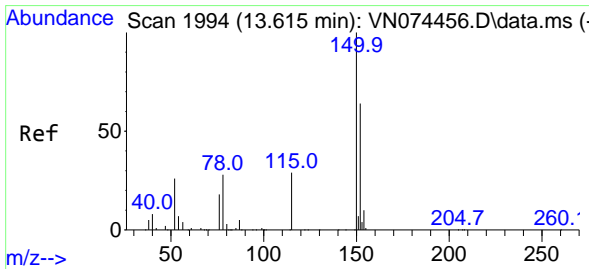
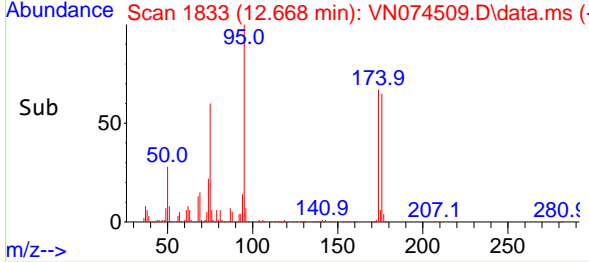
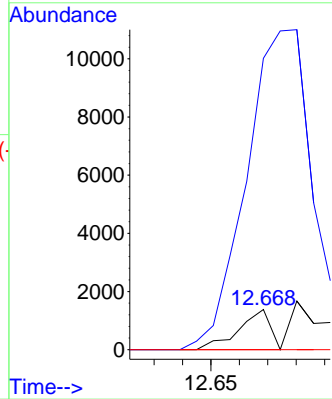
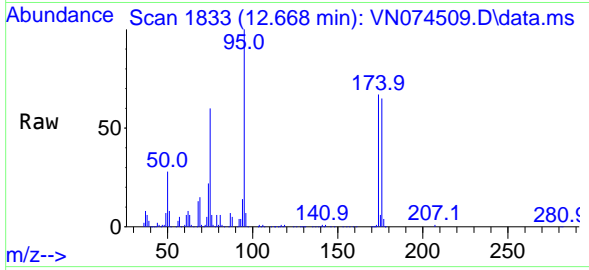


#71
 Bromoform
 Concen: 0.249 ug/l
 RT: 12.668 min Scan# 1833
 Delta R.T. 0.270 min
 Lab File: VN074509.D
 Acq: 16 Sep 2022 14:45

Instrument : MSVOA_N
 ClientSampleId : BP-VPB-RW5-GW-378-380RE

Tgt Ion:173 Resp: 1063

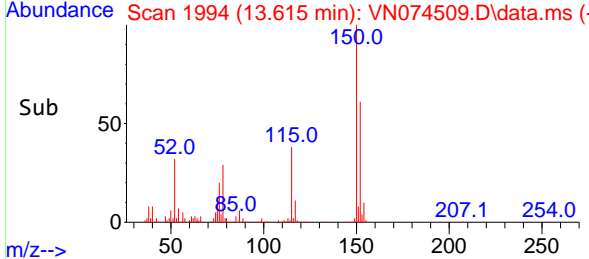
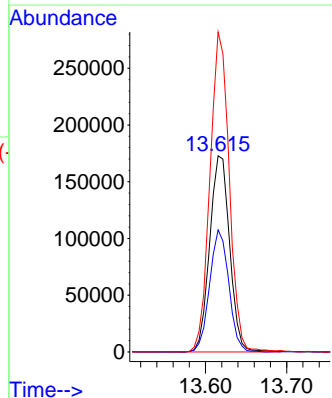
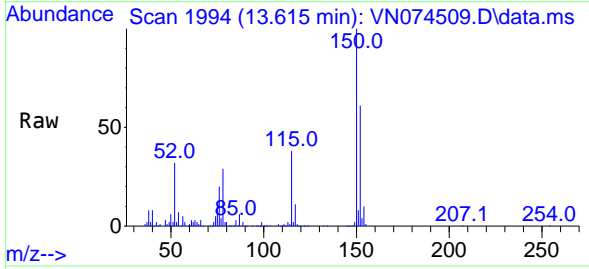
| Ion | Ratio | Lower | Upper |
|-----|-------|-------|-------|
| 173 | 100 | | |
| 175 | 0.0 | 24.6 | 73.6# |
| 254 | 0.0 | 0.1 | 0.1# |

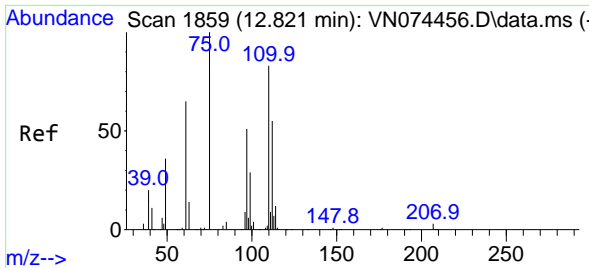


#72
 1,4-Dichlorobenzene-d4
 Concen: 50.000 ug/l
 RT: 13.615 min Scan# 1994
 Delta R.T. 0.000 min
 Lab File: VN074509.D
 Acq: 16 Sep 2022 14:45

Tgt Ion:152 Resp: 295858

| Ion | Ratio | Lower | Upper |
|-----|-------|-------|-------|
| 152 | 100 | | |
| 115 | 59.6 | 28.9 | 86.7 |
| 150 | 157.3 | 0.0 | 356.2 |

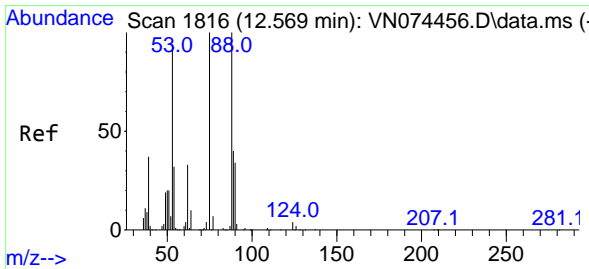
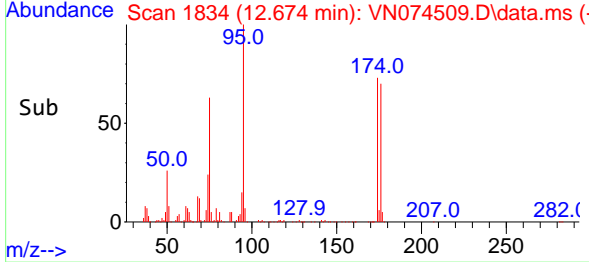
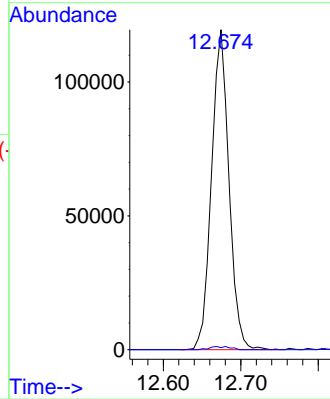
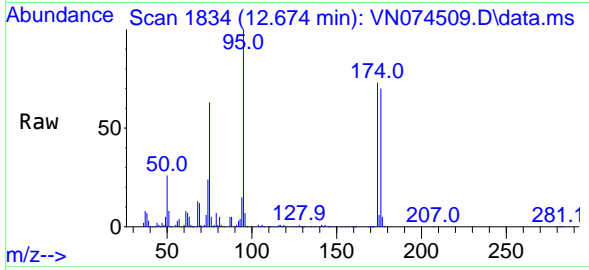




#76
 1,2,3-Trichloropropane
 Concen: 20.503 ug/l
 RT: 12.674 min Scan# 1834
 Delta R.T. -0.147 min
 Lab File: VN074509.D
 Acq: 16 Sep 2022 14:45

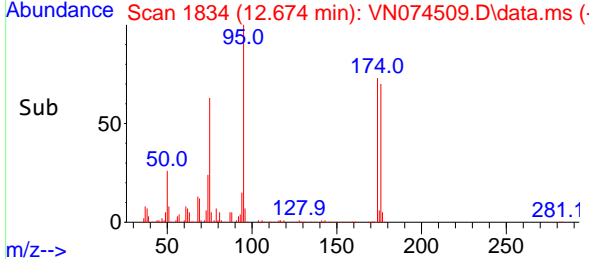
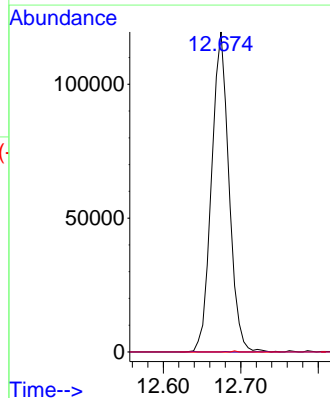
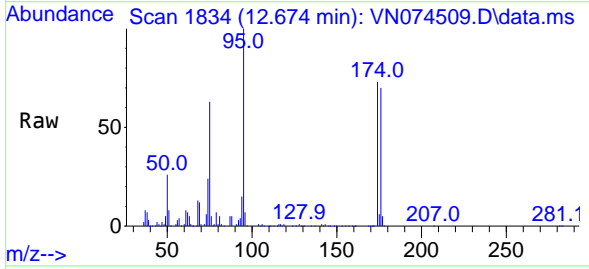
Instrument : MSVOA_N
 ClientSampleId : BP-VPB-RW5-GW-378-380RE

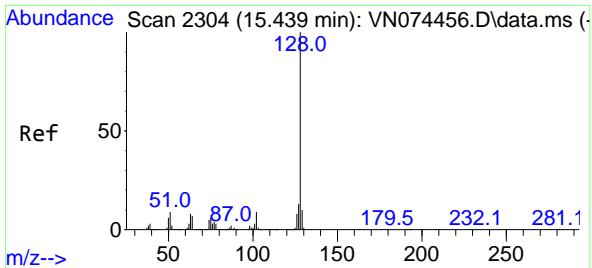
Tgt Ion: 75 Resp: 186715
 Ion Ratio Lower Upper
 75 100
 77 1.1 98.5 295.5#



#81
 trans-1,4-Dichloro-2-butene
 Concen: 44.252 ug/l
 RT: 12.674 min Scan# 1834
 Delta R.T. 0.105 min
 Lab File: VN074509.D
 Acq: 16 Sep 2022 14:45

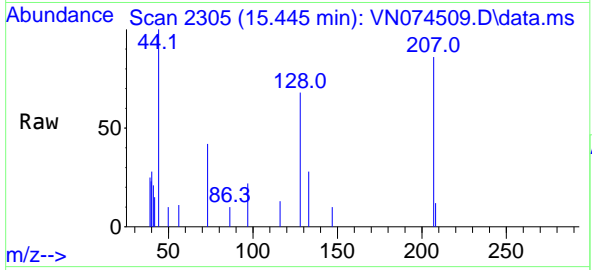
Tgt Ion: 75 Resp: 186715
 Ion Ratio Lower Upper
 75 100
 53 0.0 78.0 117.0#
 89 0.1 37.2 55.8#





#95
 Naphthalene
 Concen: 1.635 ug/l
 RT: 15.445 min Scan# 21
 Delta R.T. 0.006 min
 Lab File: VN074509.D
 Acq: 16 Sep 2022 14:45

Instrument : MSVOA_N
 ClientSampleId : BP-VPB-RW5-GW-378-380RE



Tgt Ion:128 Resp: 1194

| Ion | Ratio | Lower | Upper |
|-----|-------|-------|-------|
| 128 | 100 | | |
| 127 | 0.0 | 10.3 | 15.5# |
| 129 | 0.0 | 8.6 | 13.0# |

