

Data Path : Z:\voasrv\HPCHEM1\MSVOA_N\Data\VN091622\
 Data File : VN074517.D
 Acq On : 16 Sep 2022 18:02
 Operator : JC\MD
 Sample : N4447-03 100X
 Misc : 5.06g/10mL/100uL/5.00mL/MSVOA_N/MEOH
 ALS Vial : 21 Sample Multiplier: 1

Instrument :
 MSVOA_N
 ClientSampleId :
 AUD-1659DL

Quant Time: Sep 16 22:34:46 2022
 Quant Method : Z:\voasrv\HPCHEM1\MSVOA_N\methods\82N091522W.M
 Quant Title : SW846 8260
 QLast Update : Thu Sep 15 19:20:33 2022
 Response via : Initial Calibration

Compound	R.T.	QIon	Response	Conc	Units	Dev(Min)
Internal Standards						
1) Pentafluorobenzene	8.010	168	325024	50.000	ug/l	0.00
34) 1,4-Difluorobenzene	8.904	114	615028	50.000	ug/l	0.00
63) Chlorobenzene-d5	11.686	117	602443	50.000	ug/l	0.00
72) 1,4-Dichlorobenzene-d4	13.616	152	289907	50.000	ug/l	0.00
System Monitoring Compounds						
33) 1,2-Dichloroethane-d4	8.369	65	232123	42.091	ug/l	0.00
Spiked Amount	50.000	Range	74 - 125	Recovery	=	84.180%
35) Dibromofluoromethane	7.951	113	194064	47.500	ug/l	0.00
Spiked Amount	50.000	Range	75 - 124	Recovery	=	95.000%
50) Toluene-d8	10.381	98	740721	46.880	ug/l	0.00
Spiked Amount	50.000	Range	86 - 113	Recovery	=	93.760%
62) 4-Bromofluorobenzene	12.675	95	296254	54.745	ug/l	0.00
Spiked Amount	50.000	Range	83 - 123	Recovery	=	109.500%
Target Compounds						
						Qvalue
3) Chloromethane	2.275	50	1911	0.578	ug/l #	74
5) Bromomethane	2.799	94	1736	0.517	ug/l #	60
6) Chloroethane	2.752	64	11651	2.679	ug/l #	50
11) Tert butyl alcohol	5.228	59	11302	6.291	ug/l #	72
12) 1,1-Dichloroethene	4.122	96	188	0.728	ug/l #	1
16) Acetone	4.228	43	8465	2.399	ug/l	96
18) Methyl Acetate	4.775	43	3314	0.302	ug/l #	86
20) Methylene Chloride	4.999	84	2393	0.475	ug/l	90
21) trans-1,2-Dichloroethene	5.475	96	181	0.467	ug/l #	1
25) 2-Butanone	7.222	43	1186	0.202	ug/l #	45
26) 2,2-Dichloropropane	7.228	77	2638	0.298	ug/l #	58
31) Cyclohexane	8.028	56	31615	3.230	ug/l #	88
36) 1,1-Dichloropropene	8.016	75	31350	4.335	ug/l #	49
38) Carbon Tetrachloride	8.016	117	32970	4.938	ug/l #	16
39) Methylcyclohexane	9.392	83	112002	13.025	ug/l	96
43) Isopropyl Acetate	8.481	43	4901	0.280	ug/l #	53
48) Methyl methacrylate	9.445	41	4930	0.636	ug/l #	10
55) 1,1,2-Trichloroethane	10.816	97	17686	3.184	ug/l #	24
56) Ethyl methacrylate	10.716	69	6813	0.687	ug/l #	1
59) 2-Hexanone	10.992	43	48107	5.517	ug/l #	25
67) Ethyl Benzene	11.786	91	72222	2.601	ug/l #	85
68) m/p-Xylenes	11.886	106	106561	10.380	ug/l	95
73) Isopropylbenzene	12.522	105	33661	1.134	ug/l	93
74) N-amyl acetate	12.310	43	43960	2.369	ug/l #	54
76) 1,2,3-Trichloropropane	12.675	75	175365	19.652	ug/l #	1
78) n-propylbenzene	12.863	91	55481	1.569	ug/l	95
79) 2-Chlorotoluene	12.927	91	18817	0.892	ug/l #	40
80) 1,3,5-Trimethylbenzene	13.004	105	125242	5.176	ug/l	98
81) trans-1,4-Dichloro-2-b...	12.675	75	175365	42.415	ug/l #	11
82) 4-Chlorotoluene	13.004	91	14151	0.705	ug/l #	47
83) tert-Butylbenzene	13.269	119	7519	0.341	ug/l	82
84) 1,2,4-Trimethylbenzene	13.310	105	218755	8.983	ug/l	98
85) sec-Butylbenzene	13.445	105	17751	0.587	ug/l #	24
86) p-Isopropyltoluene	13.557	119	18924	0.803	ug/l	91
89) n-Butylbenzene	13.880	91	12677	0.597	ug/l #	74
90) Hexachloroethane	14.163	117	3834	0.747	ug/l #	9

Data Path : Z:\voasrv\HPCHEM1\MSVOA_N\Data\VN091622\
Data File : VN074517.D
Acq On : 16 Sep 2022 18:02
Operator : JC\MD
Sample : N4447-03 100X
Misc : 5.06g/10mL/100uL/5.00mL/MSVOA_N/MEOH
ALS Vial : 21 Sample Multiplier: 1

Instrument :
MSVOA_N
ClientSampleId :
AUD-1659DL

Quant Time: Sep 16 22:34:46 2022
Quant Method : Z:\voasrv\HPCHEM1\MSVOA_N\methods\82N091522W.M
Quant Title : SW846 8260
QLast Update : Thu Sep 15 19:20:33 2022
Response via : Initial Calibration

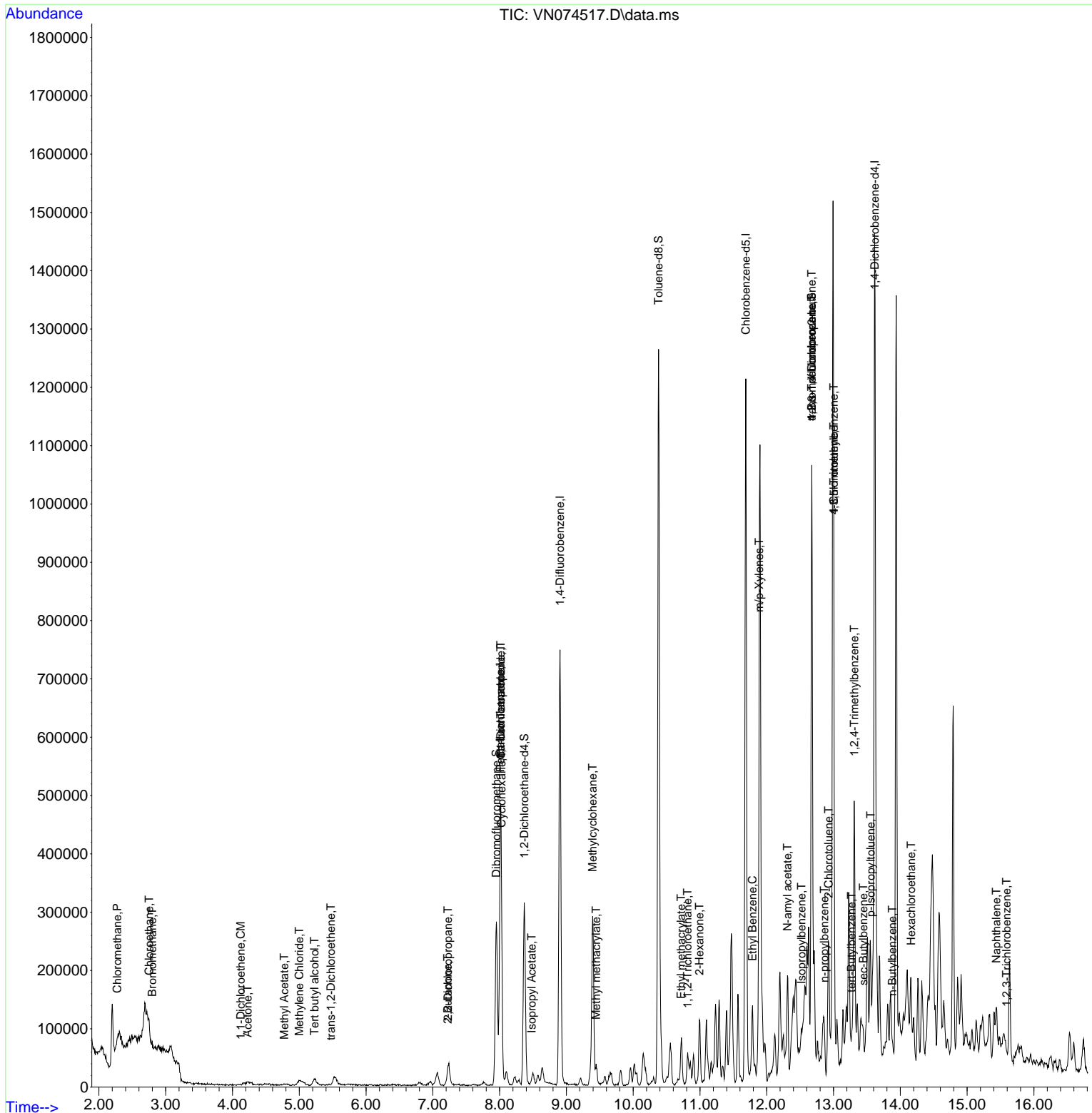
Compound	R.T.	QIon	Response	Conc	Units	Dev(Min)
95) Naphthalene	15.439	128	70068	4.323	ug/l #	93
96) 1,2,3-Trichlorobenzene	15.592	180	517	1.421	ug/l #	1

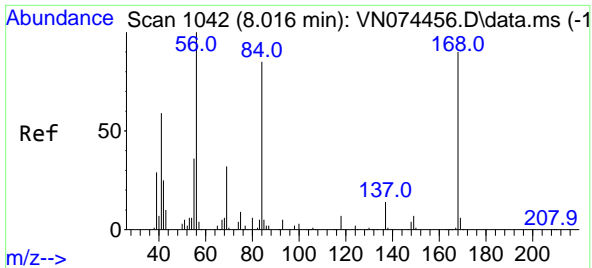
(#) = qualifier out of range (m) = manual integration (+) = signals summed

Data Path : Z:\voasrv\HPCHEM1\MSVOA_N\Data\VN091622\
 Data File : VN074517.D
 Acq On : 16 Sep 2022 18:02
 Operator : JC\MD
 Sample : N4447-03 100X
 Misc : 5.06g/10mL/100uL/5.00mL/MSVOA_N/MEOH
 ALS Vial : 21 Sample Multiplier: 1

Instrument :
 MSVOA_N
 ClientSampleId :
 AUD-1659DL

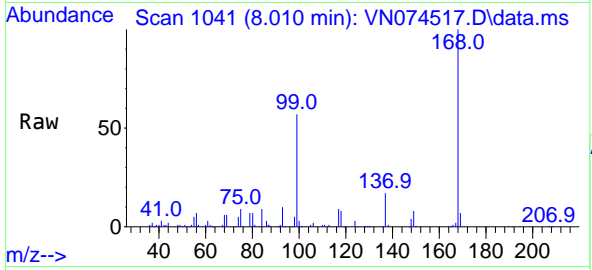
Quant Time: Sep 16 22:34:46 2022
 Quant Method : Z:\voasrv\HPCHEM1\MSVOA_N\methods\82N091522W.M
 Quant Title : SW846 8260
 QLast Update : Thu Sep 15 19:20:33 2022
 Response via : Initial Calibration



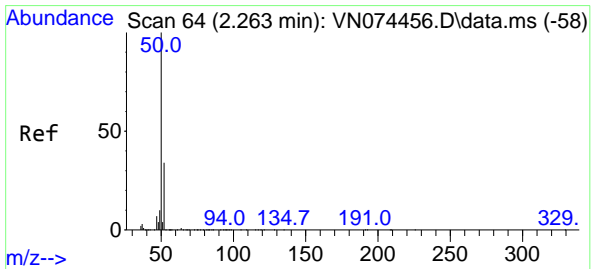
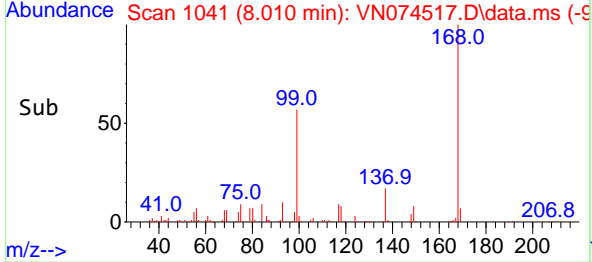
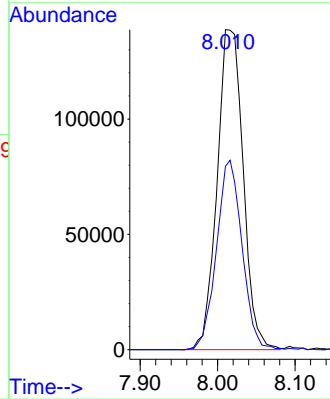


#1
 Pentafluorobenzene
 Concen: 50.000 ug/l
 RT: 8.010 min Scan# 10
 Delta R.T. -0.006 min
 Lab File: VN074517.D
 Acq: 16 Sep 2022 18:02

Instrument :
 MSVOA_N
 ClientSampleId :
 AUD-1659DL

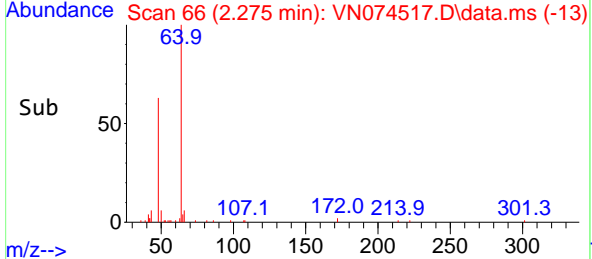
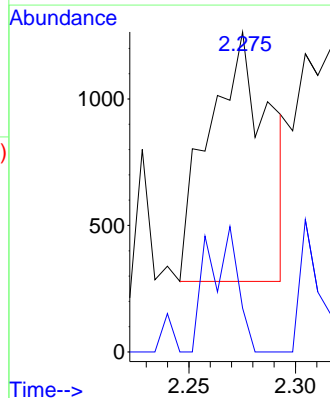
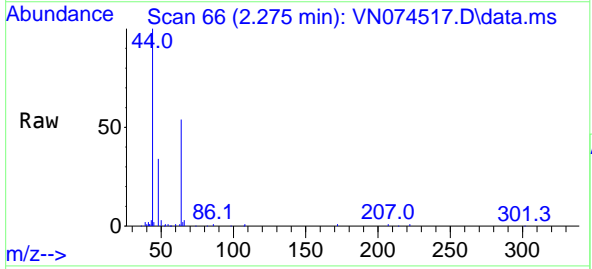


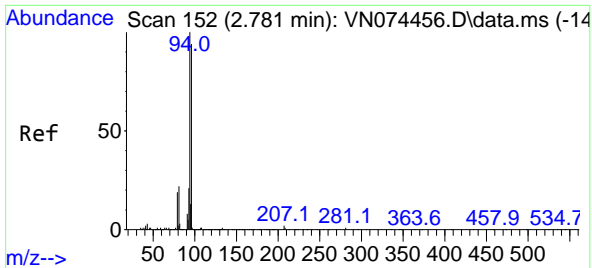
Tgt Ion:168 Resp: 325024
 Ion Ratio Lower Upper
 168 100
 99 57.4 42.3 63.5



#3
 Chloromethane
 Concen: 0.578 ug/l
 RT: 2.275 min Scan# 66
 Delta R.T. 0.012 min
 Lab File: VN074517.D
 Acq: 16 Sep 2022 18:02

Tgt Ion: 50 Resp: 1911
 Ion Ratio Lower Upper
 50 100
 52 17.5 25.7 38.5#

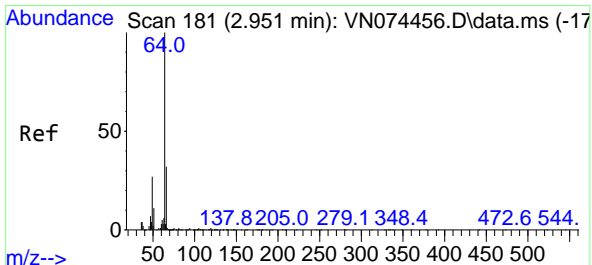
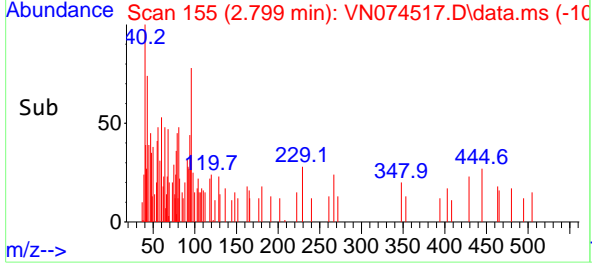
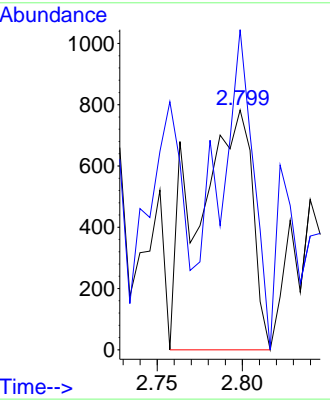
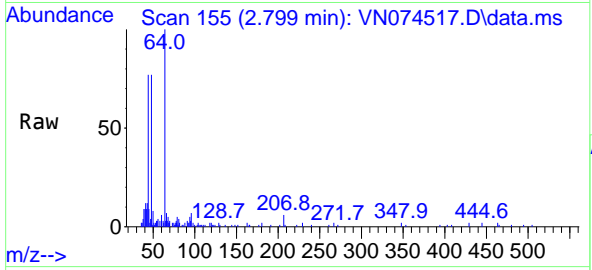




#5
 Bromomethane
 Concen: 0.517 ug/l
 RT: 2.799 min Scan# 11
 Delta R.T. 0.018 min
 Lab File: VN074517.D
 Acq: 16 Sep 2022 18:02

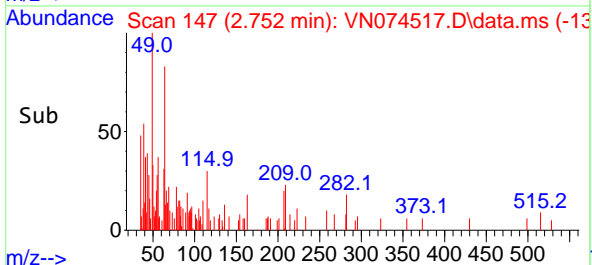
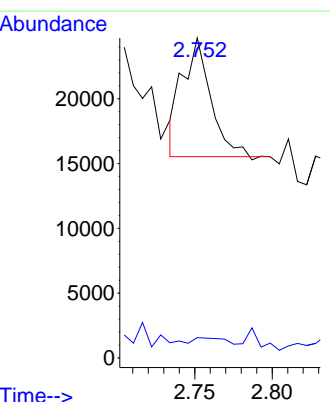
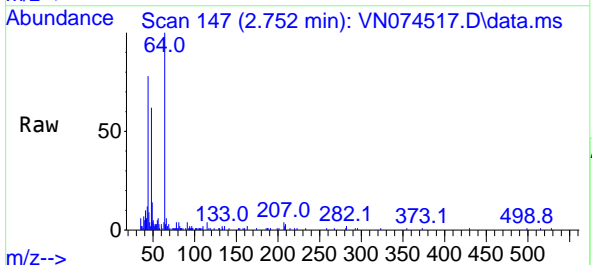
Instrument : MSVOA_N
 ClientSampleId : AUD-1659DL

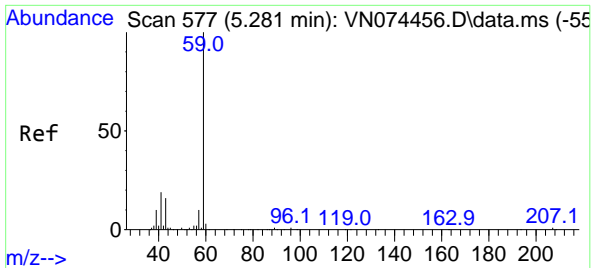
Tgt Ion: 94 Resp: 1736
 Ion Ratio Lower Upper
 94 100
 96 133.5 76.0 114.0#



#6
 Chloroethane
 Concen: 2.679 ug/l
 RT: 2.752 min Scan# 147
 Delta R.T. -0.199 min
 Lab File: VN074517.D
 Acq: 16 Sep 2022 18:02

Tgt Ion: 64 Resp: 11651
 Ion Ratio Lower Upper
 64 100
 66 4.6 26.2 39.4#

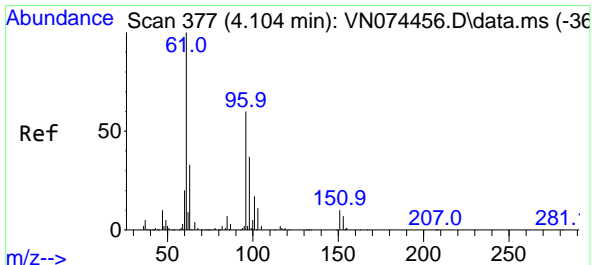
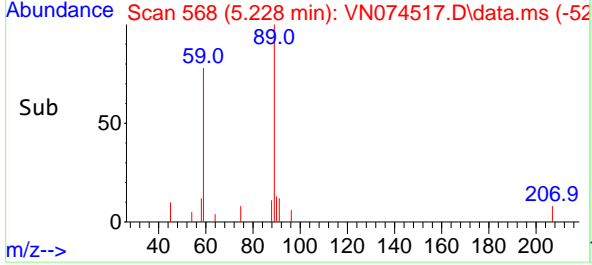
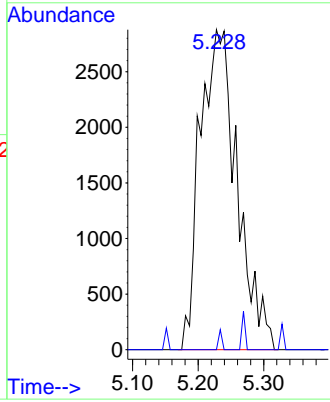
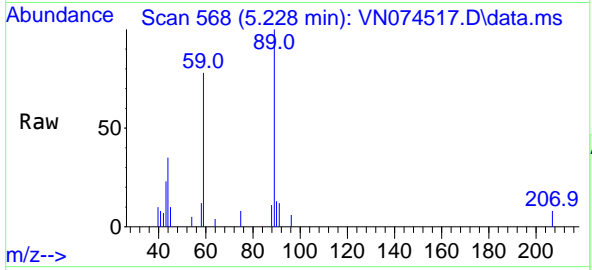




#11
 Tert butyl alcohol
 Concen: 6.291 ug/l
 RT: 5.228 min Scan# 50
 Delta R.T. -0.053 min
 Lab File: VN074517.D
 Acq: 16 Sep 2022 18:02

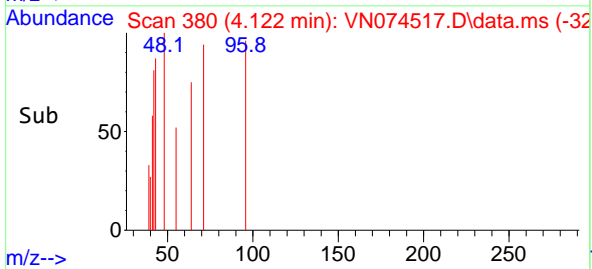
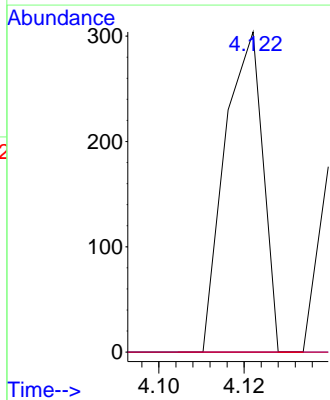
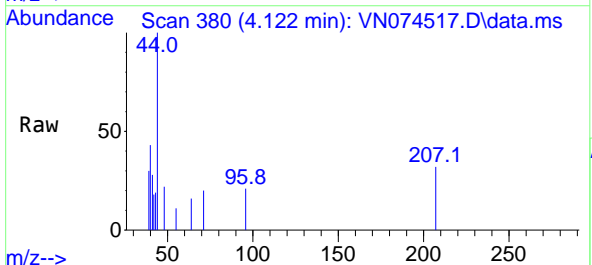
Instrument : MSVOA_N
 ClientSampleId : AUD-1659DL

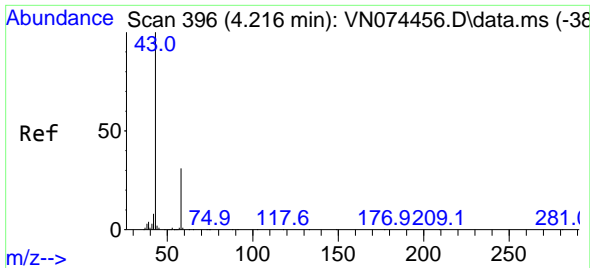
Tgt Ion: 59 Resp: 11302
 Ion Ratio Lower Upper
 59 100
 57 0.0 8.3 12.5#



#12
 1,1-Dichloroethene
 Concen: 0.728 ug/l
 RT: 4.122 min Scan# 380
 Delta R.T. 0.018 min
 Lab File: VN074517.D
 Acq: 16 Sep 2022 18:02

Tgt Ion: 96 Resp: 188
 Ion Ratio Lower Upper
 96 100
 61 0.0 127.6 191.4#
 98 0.0 51.2 76.8#

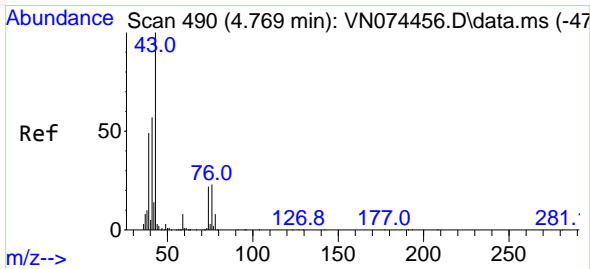
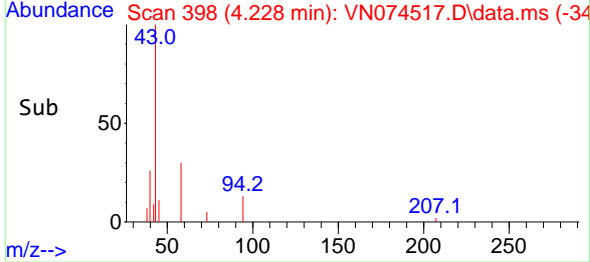
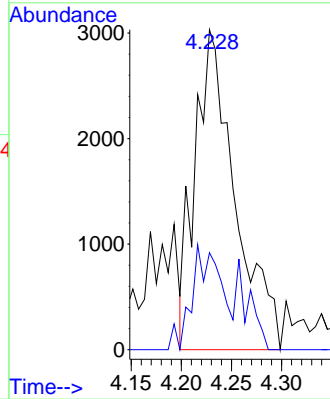
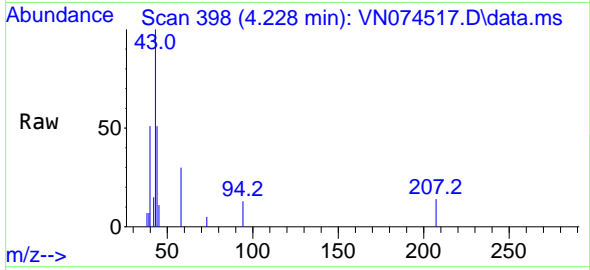




#16
 Acetone
 Concen: 2.399 ug/l
 RT: 4.228 min Scan# 398
 Delta R.T. 0.012 min
 Lab File: VN074517.D
 Acq: 16 Sep 2022 18:02

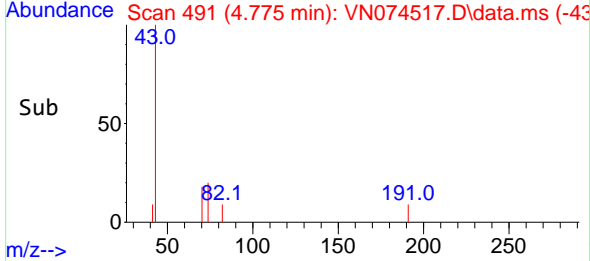
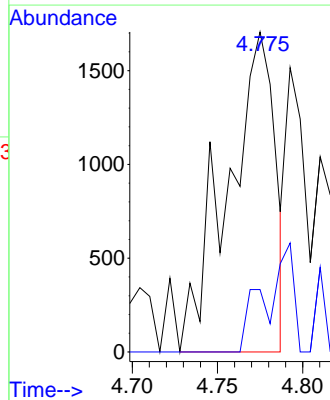
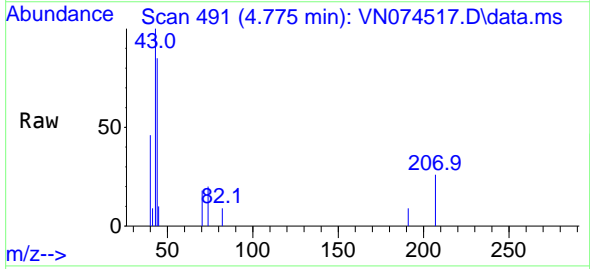
Instrument :
 MSVOA_N
 ClientSampleId :
 AUD-1659DL

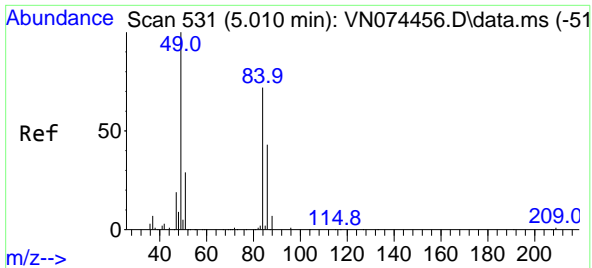
Tgt Ion: 43 Resp: 8465
 Ion Ratio Lower Upper
 43 100
 58 30.3 26.0 39.0



#18
 Methyl Acetate
 Concen: 0.302 ug/l
 RT: 4.775 min Scan# 491
 Delta R.T. 0.006 min
 Lab File: VN074517.D
 Acq: 16 Sep 2022 18:02

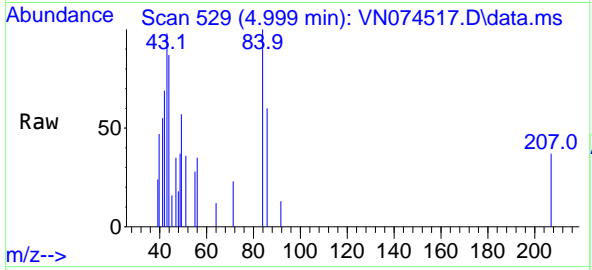
Tgt Ion: 43 Resp: 3314
 Ion Ratio Lower Upper
 43 100
 74 19.9 21.6 32.4#





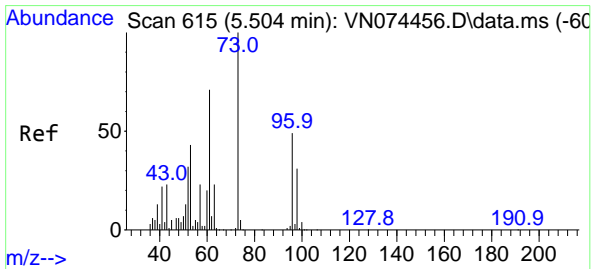
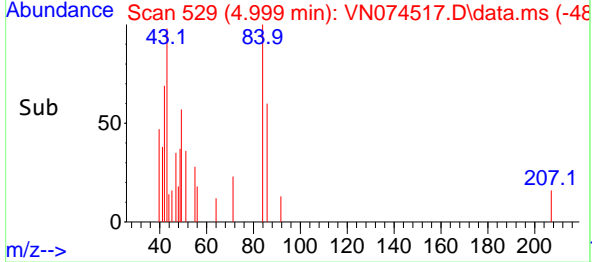
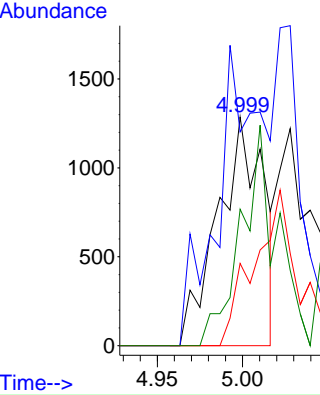
#20
 Methylene Chloride
 Concen: 0.475 ug/l
 RT: 4.999 min Scan# 51
 Delta R.T. -0.011 min
 Lab File: VN074517.D
 Acq: 16 Sep 2022 18:02

Instrument : MSVOA_N
 Client Sample Id : AUD-1659DL

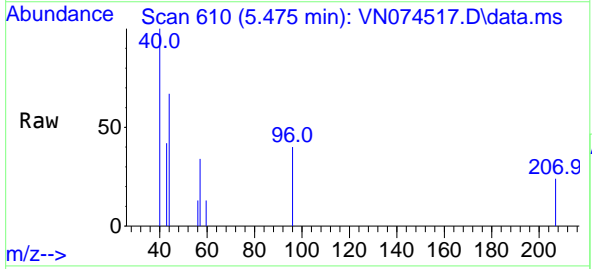


Tgt Ion: 84 Resp: 2393

Ion	Ratio	Lower	Upper
84	100		
49	93.5	88.3	132.5
51	36.0	28.2	42.2
86	59.7	50.6	76.0

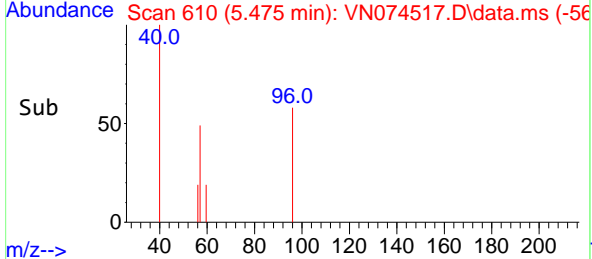
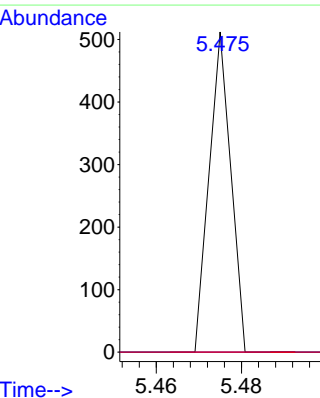


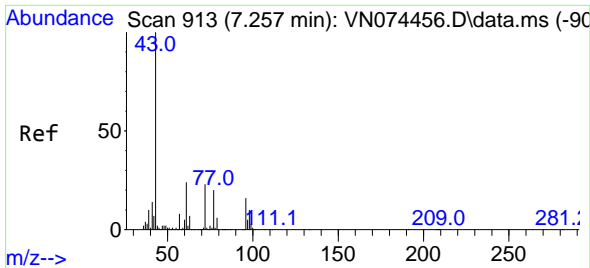
#21
 trans-1,2-Dichloroethene
 Concen: 0.467 ug/l
 RT: 5.475 min Scan# 610
 Delta R.T. -0.029 min
 Lab File: VN074517.D
 Acq: 16 Sep 2022 18:02



Tgt Ion: 96 Resp: 181

Ion	Ratio	Lower	Upper
96	100		
61	0.0	105.8	158.8#
98	0.0	50.3	75.5#

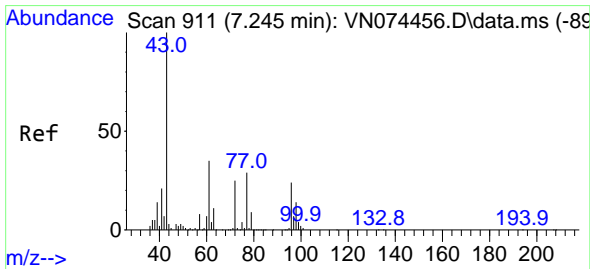
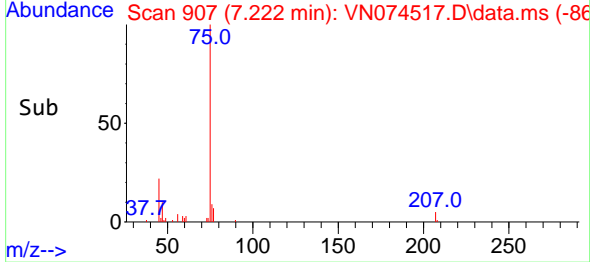
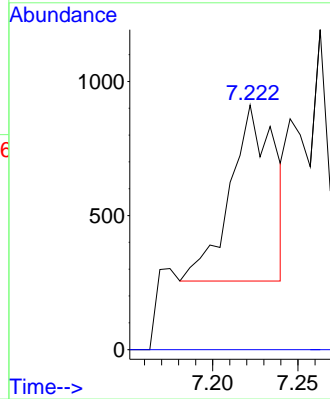
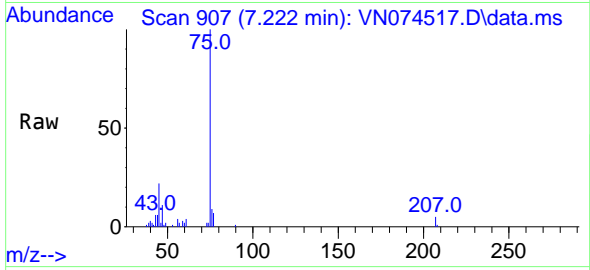




#25
 2-Butanone
 Concen: 0.202 ug/l
 RT: 7.222 min Scan# 907
 Delta R.T. -0.035 min
 Lab File: VN074517.D
 Acq: 16 Sep 2022 18:02

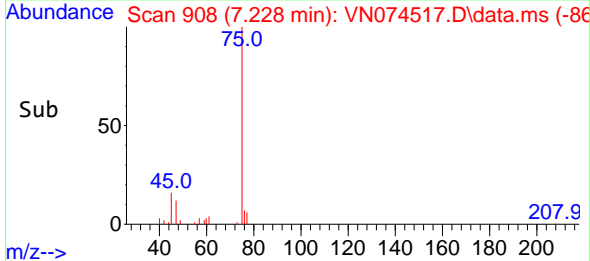
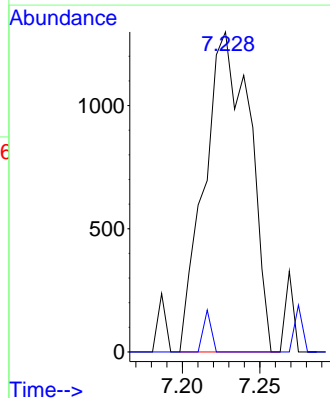
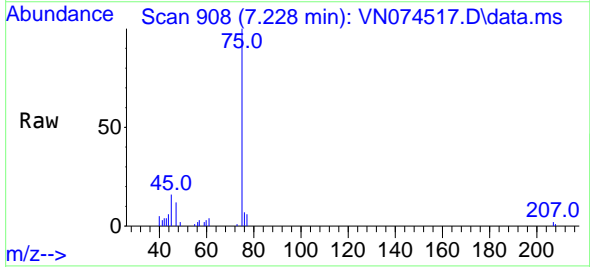
Instrument : MSVOA_N
 ClientSampleId : AUD-1659DL

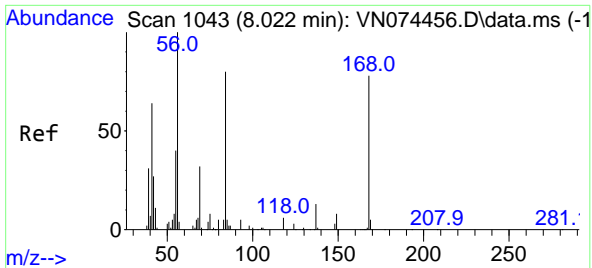
Tgt Ion: 43 Resp: 1186
 Ion Ratio Lower Upper
 43 100
 72 0.0 23.7 35.5#



#26
 2,2-Dichloropropane
 Concen: 0.298 ug/l
 RT: 7.228 min Scan# 908
 Delta R.T. -0.017 min
 Lab File: VN074517.D
 Acq: 16 Sep 2022 18:02

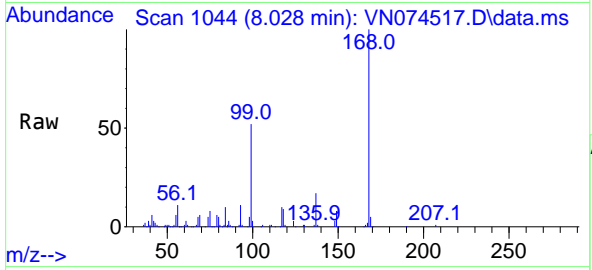
Tgt Ion: 77 Resp: 2638
 Ion Ratio Lower Upper
 77 100
 97 2.3 11.4 34.2#



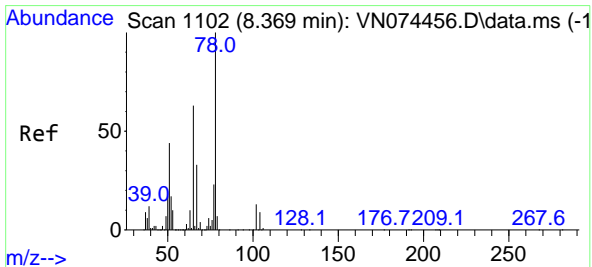
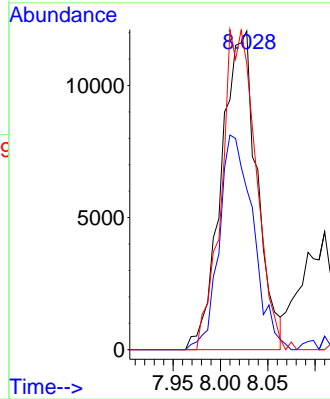
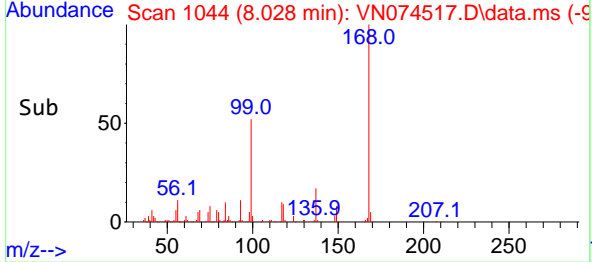


#31
 Cyclohexane
 Concen: 3.230 ug/l
 RT: 8.028 min Scan# 1043
 Delta R.T. 0.006 min
 Lab File: VN074517.D
 Acq: 16 Sep 2022 18:02

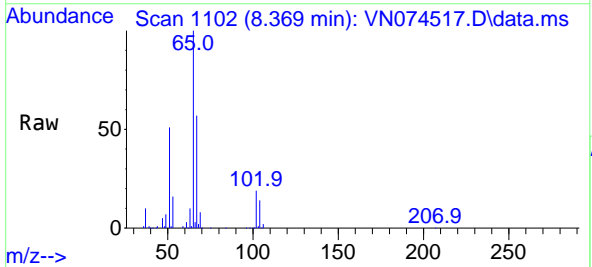
Instrument : MSVOA_N
 ClientSampleId : AUD-1659DL



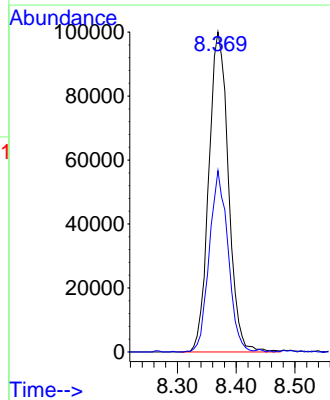
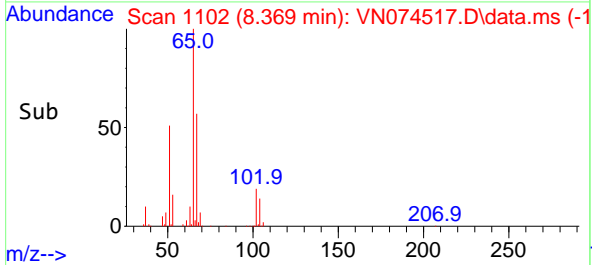
Tgt Ion: 56 Resp: 31615
 Ion Ratio Lower Upper
 56 100
 69 50.3 27.8 41.8#
 84 89.7 76.9 115.3

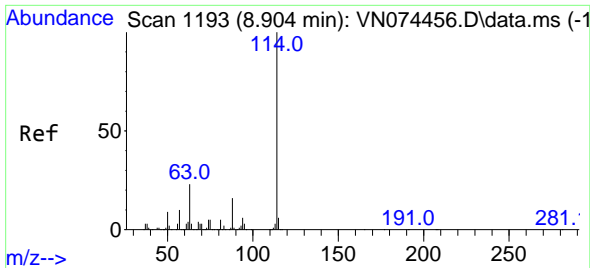


#33
 1,2-Dichloroethane-d4
 Concen: 42.091 ug/l
 RT: 8.369 min Scan# 1102
 Delta R.T. -0.000 min
 Lab File: VN074517.D
 Acq: 16 Sep 2022 18:02



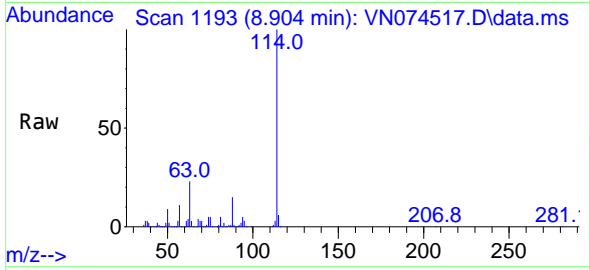
Tgt Ion: 65 Resp: 232123
 Ion Ratio Lower Upper
 65 100
 67 54.2 0.0 104.8



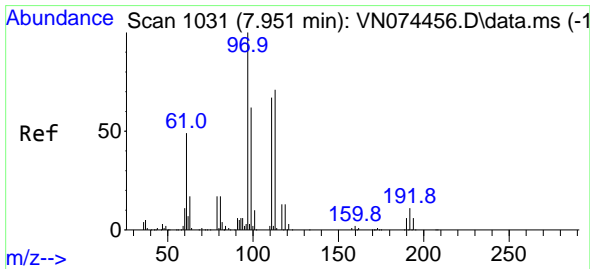
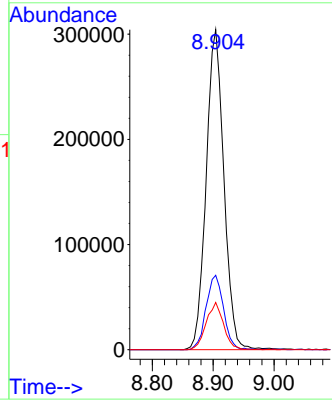
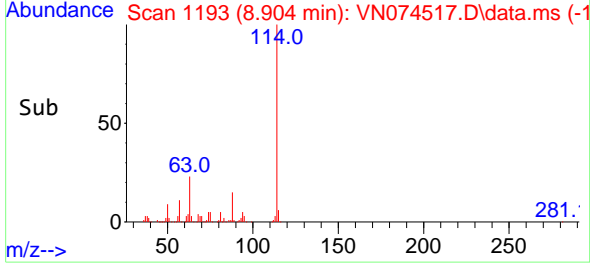


#34
 1,4-Difluorobenzene
 Concen: 50.000 ug/l
 RT: 8.904 min Scan# 1193
 Delta R.T. 0.000 min
 Lab File: VN074517.D
 Acq: 16 Sep 2022 18:02

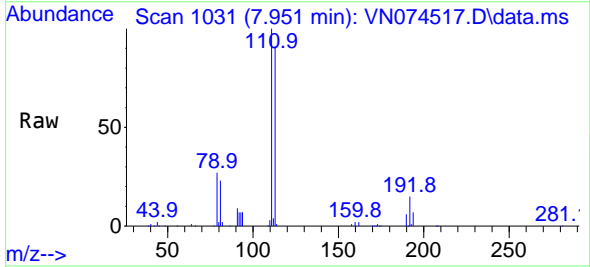
Instrument : MSVOA_N
 ClientSampleId : AUD-1659DL



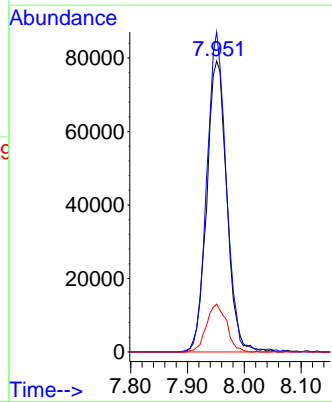
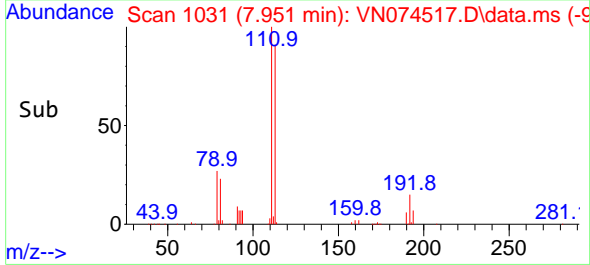
Tgt Ion:114 Resp: 615028
 Ion Ratio Lower Upper
 114 100
 63 23.2 0.0 40.0
 88 14.8 0.0 32.6

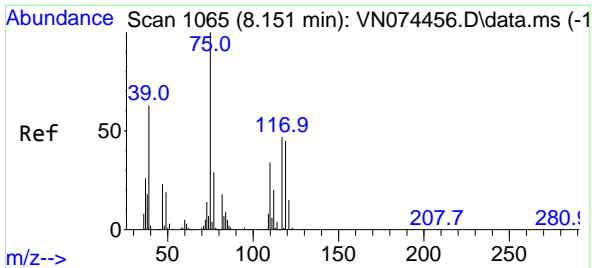


#35
 Dibromofluoromethane
 Concen: 47.500 ug/l
 RT: 7.951 min Scan# 1031
 Delta R.T. 0.000 min
 Lab File: VN074517.D
 Acq: 16 Sep 2022 18:02



Tgt Ion:113 Resp: 194064
 Ion Ratio Lower Upper
 113 100
 111 105.9 81.4 122.0
 192 16.5 17.0 25.6#



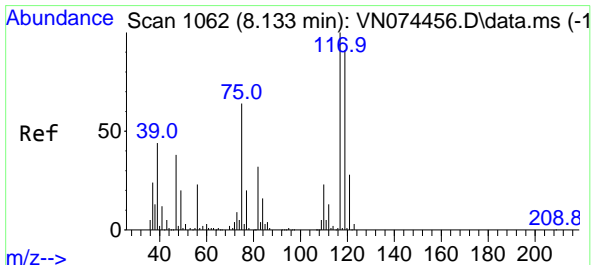
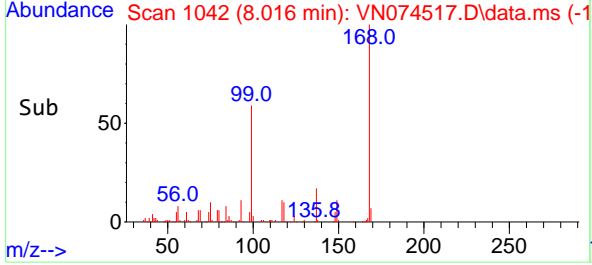
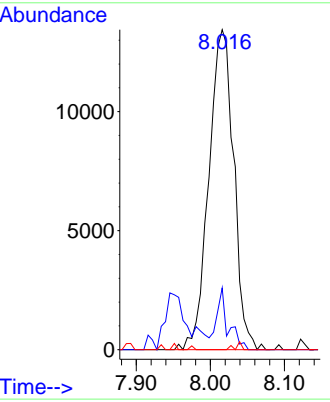
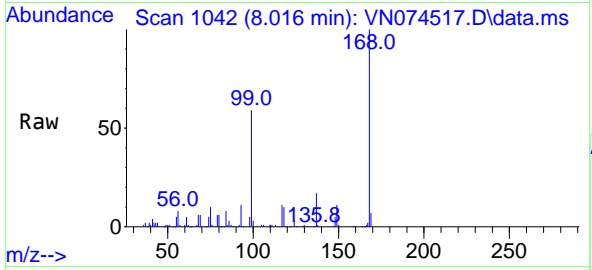


#36
 1,1-Dichloropropene
 Concen: 4.335 ug/l
 RT: 8.016 min Scan# 1042
 Delta R.T. -0.135 min
 Lab File: VN074517.D
 Acq: 16 Sep 2022 18:02

Instrument : MSVOA_N
 ClientSampleId : AUD-1659DL

Tgt Ion: 75 Resp: 31350

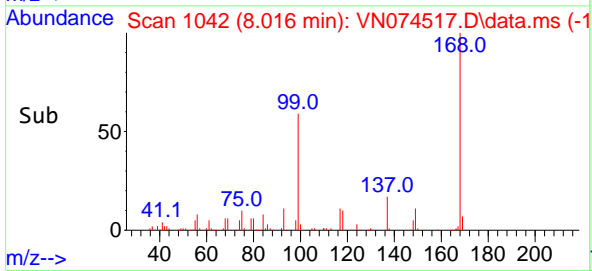
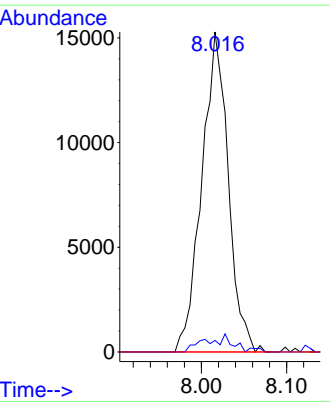
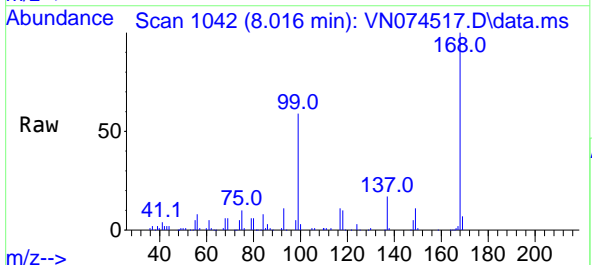
Ion	Ratio	Lower	Upper
75	100		
110	9.0	18.3	54.8#
77	0.0	25.1	37.7#

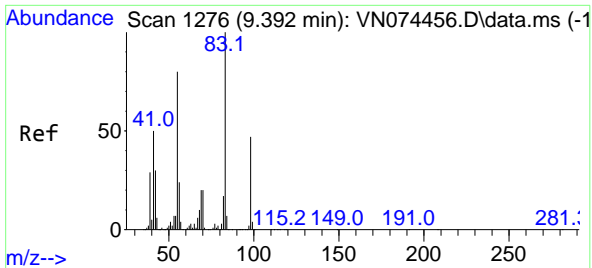


#38
 Carbon Tetrachloride
 Concen: 4.938 ug/l
 RT: 8.016 min Scan# 1042
 Delta R.T. -0.117 min
 Lab File: VN074517.D
 Acq: 16 Sep 2022 18:02

Tgt Ion: 117 Resp: 32970

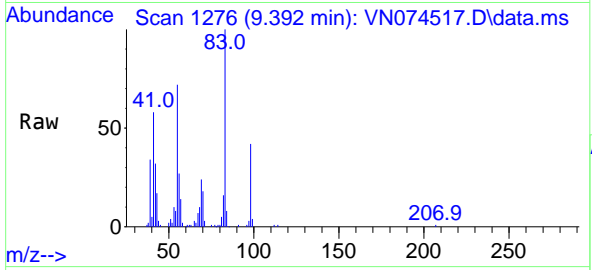
Ion	Ratio	Lower	Upper
117	100		
119	3.6	75.8	113.8#
121	1.6	24.6	37.0#





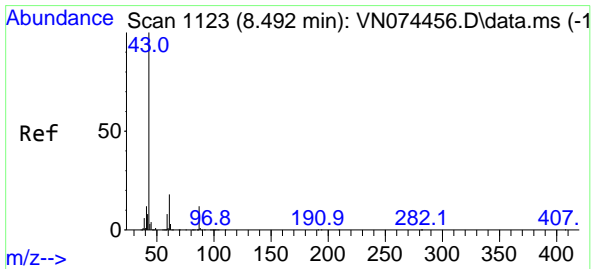
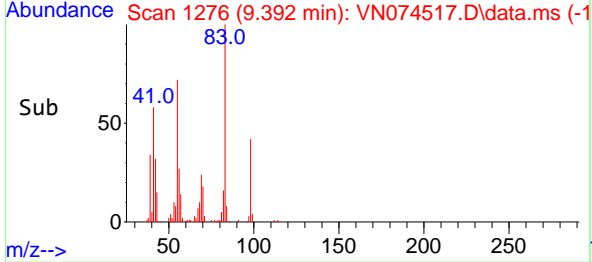
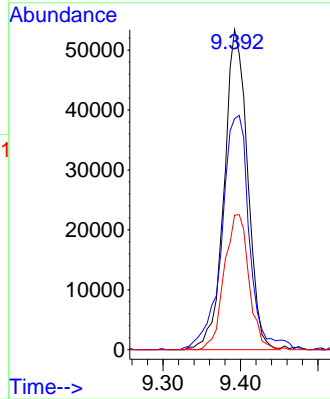
#39
 Methylcyclohexane
 Concen: 13.025 ug/l
 RT: 9.392 min Scan# 112002
 Delta R.T. 0.000 min
 Lab File: VN074517.D
 Acq: 16 Sep 2022 18:02

Instrument :
 MSVOA_N
 ClientSampleId :
 AUD-1659DL

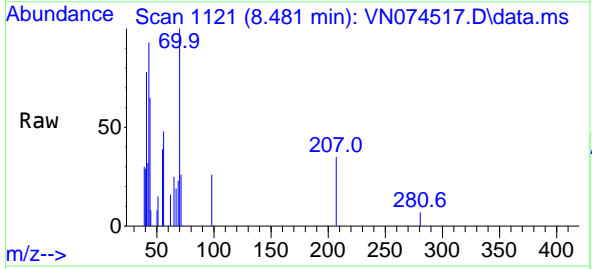


Tgt Ion: 83 Resp: 112002

Ion	Ratio	Lower	Upper
83	100		
55	72.2	57.8	86.8
98	42.0	39.4	59.2

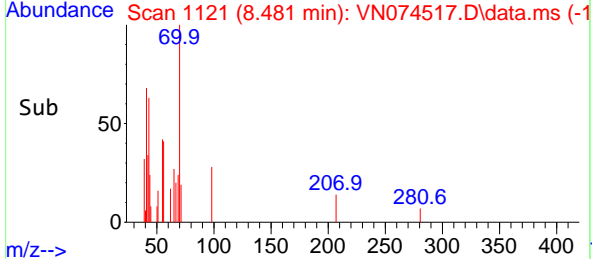
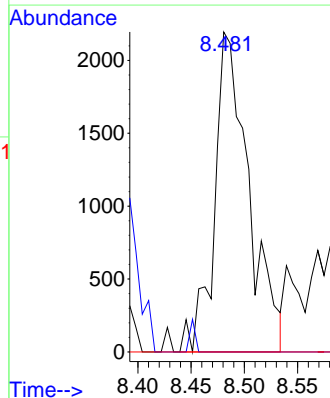


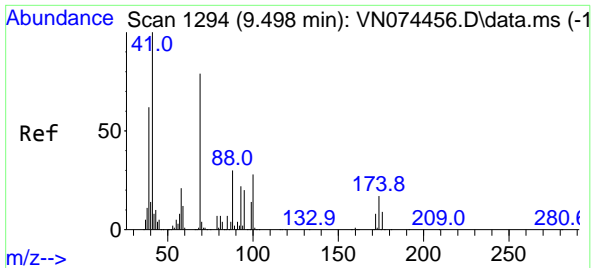
#43
 Isopropyl Acetate
 Concen: 0.280 ug/l
 RT: 8.481 min Scan# 1121
 Delta R.T. -0.011 min
 Lab File: VN074517.D
 Acq: 16 Sep 2022 18:02



Tgt Ion: 43 Resp: 4901

Ion	Ratio	Lower	Upper
43	100		
61	0.0	21.9	32.9#
87	0.0	12.0	18.0#



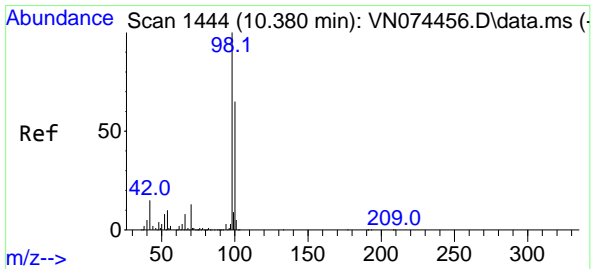
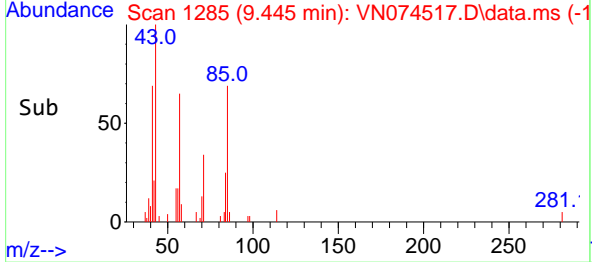
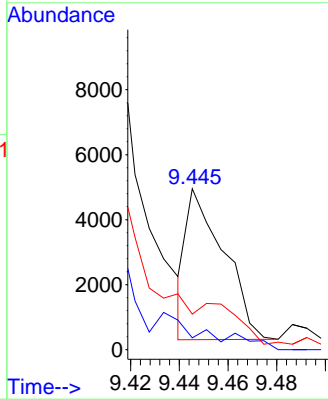
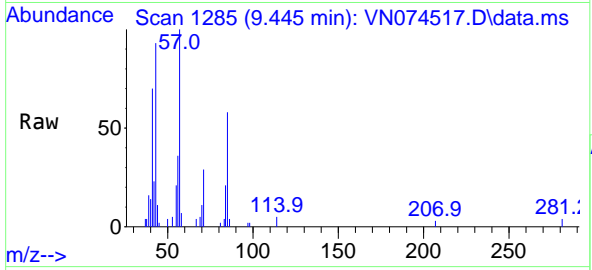


#48
 Methyl methacrylate
 Concen: 0.636 ug/l
 RT: 9.445 min Scan# 11
 Delta R.T. -0.053 min
 Lab File: VN074517.D
 Acq: 16 Sep 2022 18:02

Instrument : MSVOA_N
 ClientSampleId : AUD-1659DL

Tgt Ion: 41 Resp: 4930

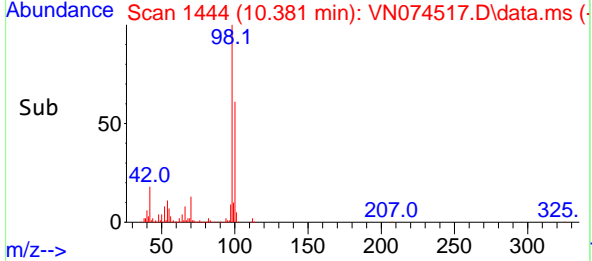
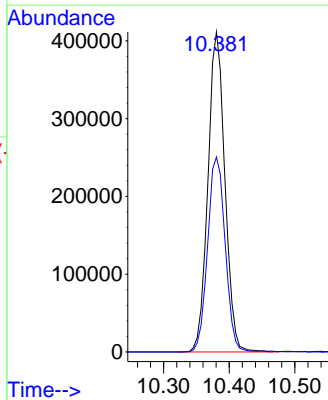
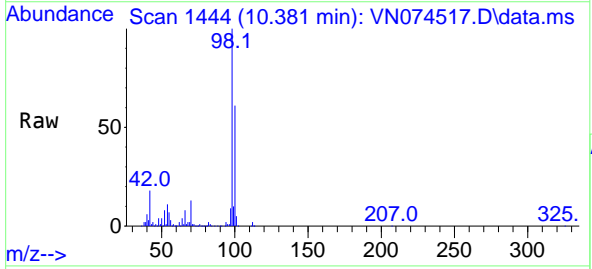
Ion	Ratio	Lower	Upper
41	100		
69	0.0	74.7	112.1#
39	0.0	45.6	68.4#

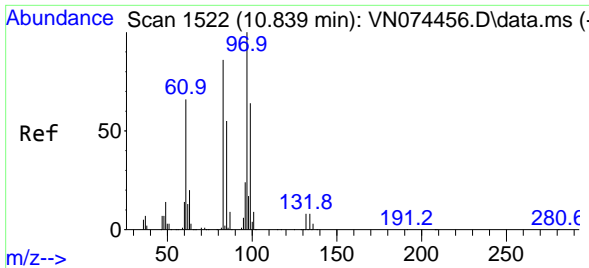


#50
 Toluene-d8
 Concen: 46.880 ug/l
 RT: 10.381 min Scan# 1444
 Delta R.T. 0.001 min
 Lab File: VN074517.D
 Acq: 16 Sep 2022 18:02

Tgt Ion: 98 Resp: 740721

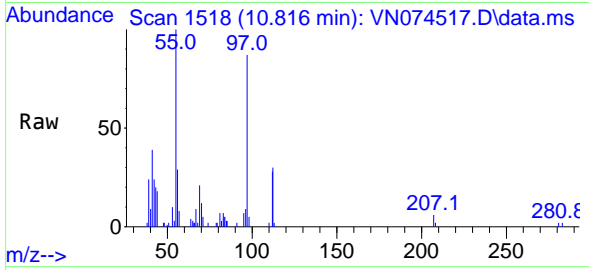
Ion	Ratio	Lower	Upper
98	100		
100	63.1	52.6	78.8





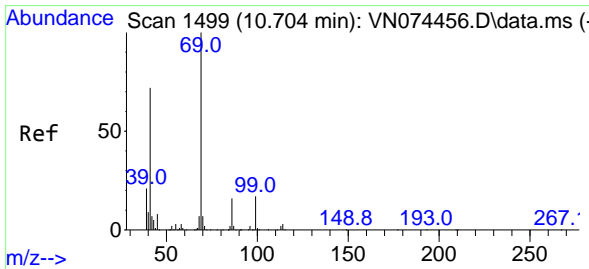
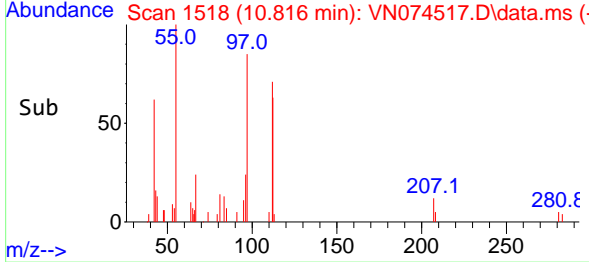
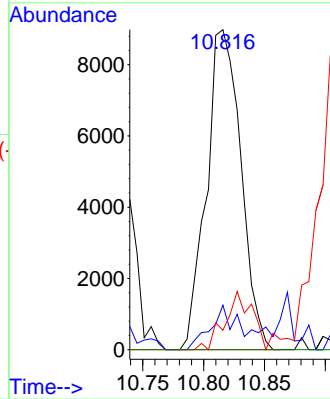
#55
 1,1,2-Trichloroethane
 Concen: 3.184 ug/l
 RT: 10.816 min Scan# 1518
 Delta R.T. -0.023 min
 Lab File: VN074517.D
 Acq: 16 Sep 2022 18:02

Instrument : MSVOA_N
 ClientSampleId : AUD-1659DL

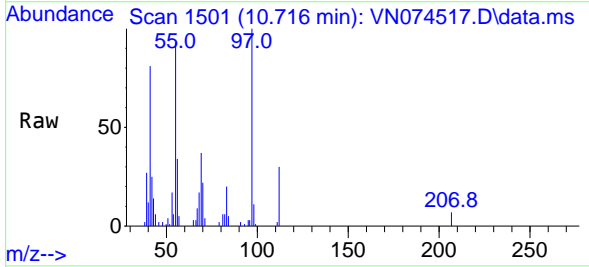


Tgt Ion: 97 Resp: 17686

Ion	Ratio	Lower	Upper
97	100		
83	13.9	66.2	99.4#
85	6.1	43.9	65.9#
99	0.0	50.6	76.0#

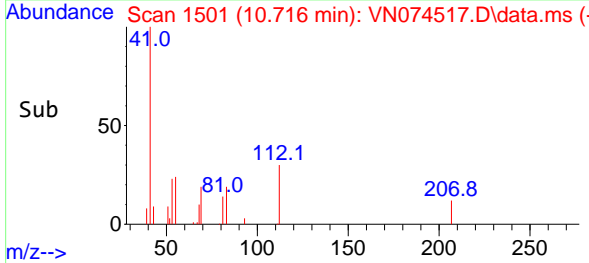
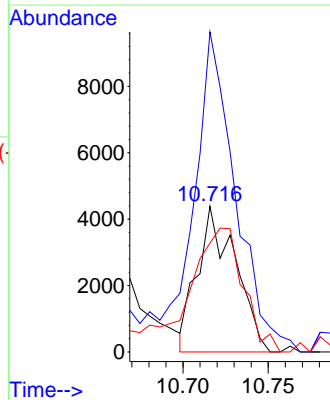


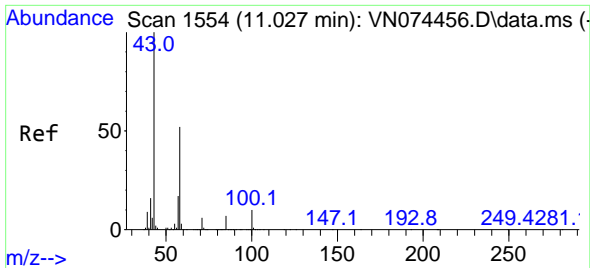
#56
 Ethyl methacrylate
 Concen: 0.687 ug/l
 RT: 10.716 min Scan# 1501
 Delta R.T. 0.012 min
 Lab File: VN074517.D
 Acq: 16 Sep 2022 18:02



Tgt Ion: 69 Resp: 6813

Ion	Ratio	Lower	Upper
69	100		
41	237.3	47.8	71.6#
39	129.0	27.3	40.9#

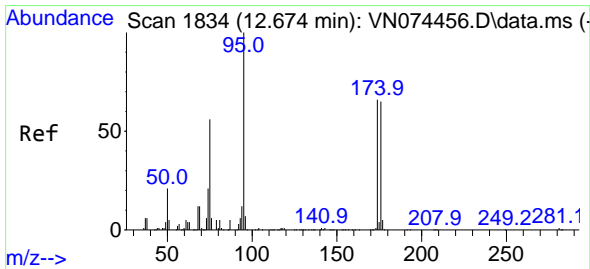
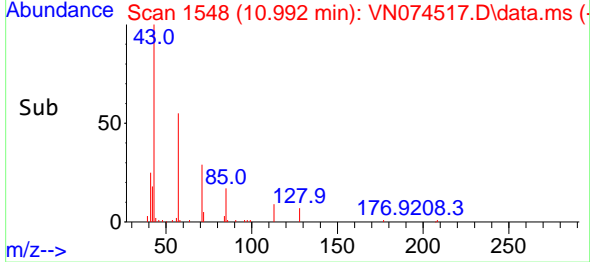
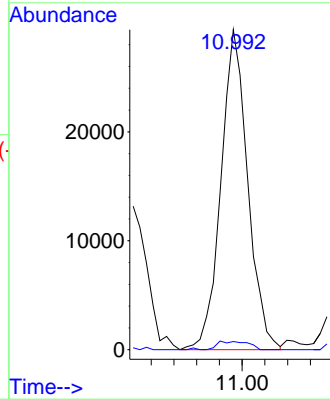
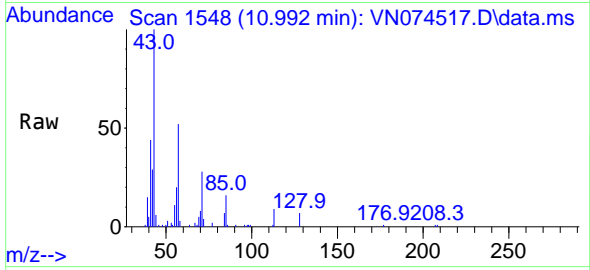




#59
 2-Hexanone
 Concen: 5.517 ug/l
 RT: 10.992 min Scan# 11
 Delta R.T. -0.035 min
 Lab File: VN074517.D
 Acq: 16 Sep 2022 18:02

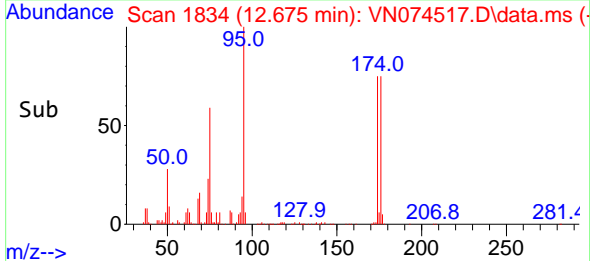
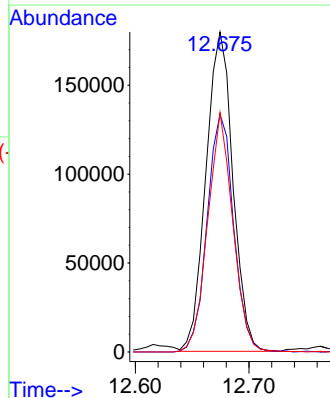
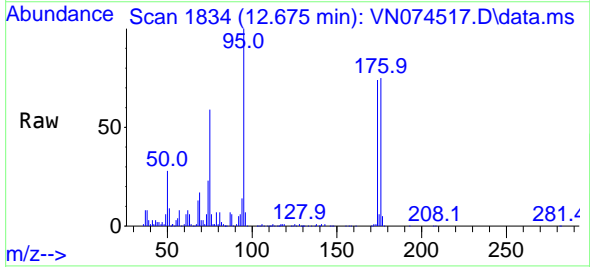
Instrument : MSVOA_N
 ClientSampleId : AUD-1659DL

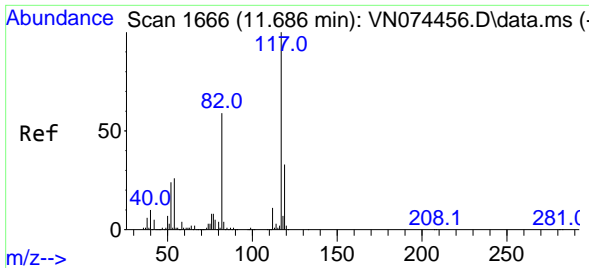
Tgt Ion: 43 Resp: 48107
 Ion Ratio Lower Upper
 43 100
 58 3.0 29.7 89.1#



#62
 4-Bromofluorobenzene
 Concen: 54.745 ug/l
 RT: 12.675 min Scan# 1834
 Delta R.T. 0.001 min
 Lab File: VN074517.D
 Acq: 16 Sep 2022 18:02

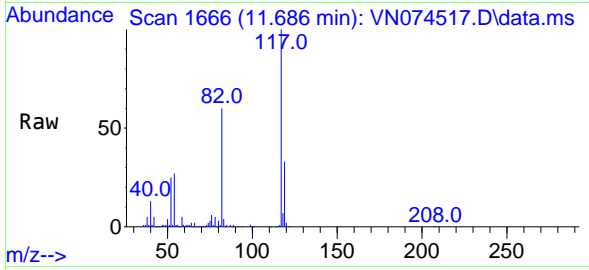
Tgt Ion: 95 Resp: 296254
 Ion Ratio Lower Upper
 95 100
 174 73.3 0.0 167.6
 176 69.8 0.0 163.4





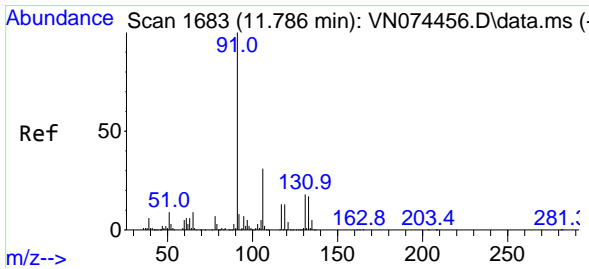
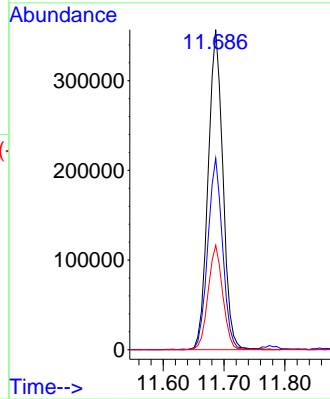
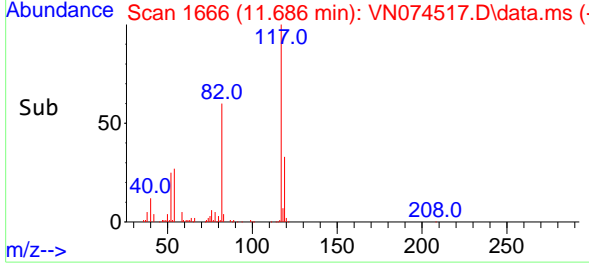
#63
 Chlorobenzene-d5
 Concen: 50.000 ug/l
 RT: 11.686 min Scan# 1666
 Delta R.T. 0.000 min
 Lab File: VN074517.D
 Acq: 16 Sep 2022 18:02

Instrument : MSVOA_N
 ClientSampleId : AUD-1659DL

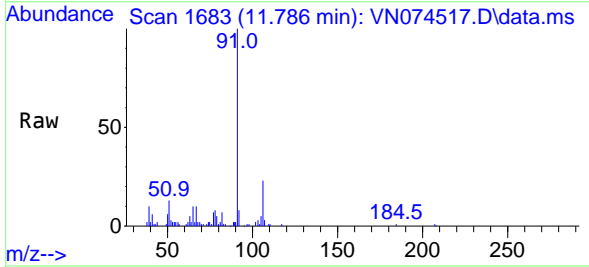


Tgt Ion:117 Resp: 602443

Ion	Ratio	Lower	Upper
117	100		
82	59.7	44.2	66.2
119	32.7	25.4	38.0

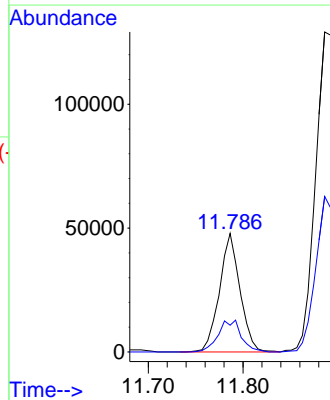
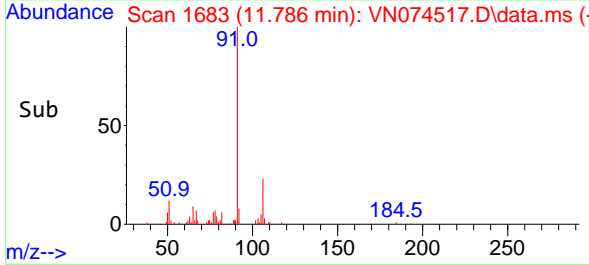


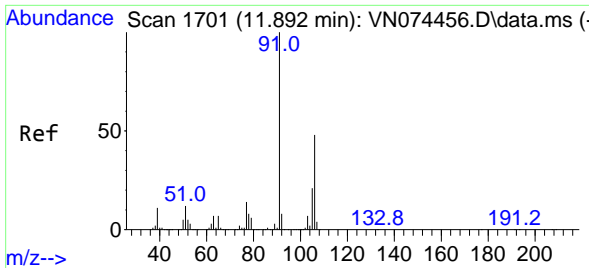
#67
 Ethyl Benzene
 Concen: 2.601 ug/l
 RT: 11.786 min Scan# 1683
 Delta R.T. 0.000 min
 Lab File: VN074517.D
 Acq: 16 Sep 2022 18:02



Tgt Ion: 91 Resp: 72222

Ion	Ratio	Lower	Upper
91	100		
106	22.6	24.9	37.3

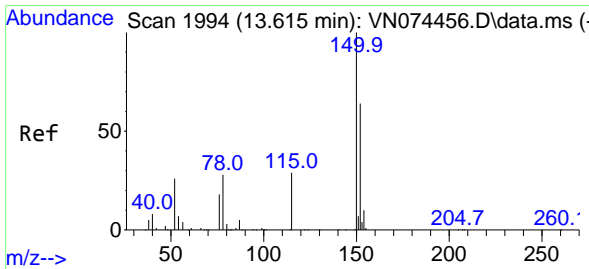
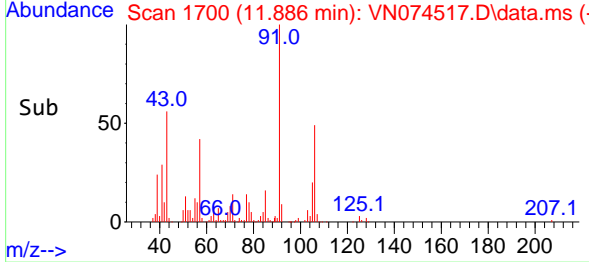
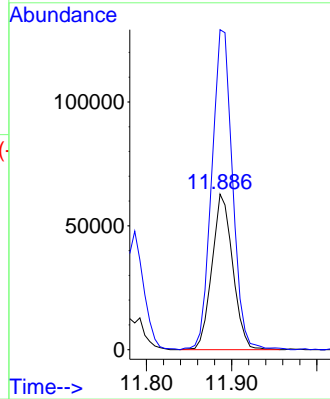
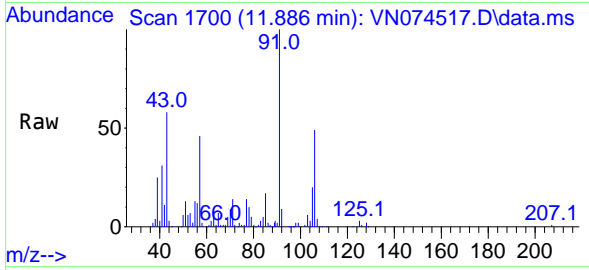




#68
 m/p-Xylenes
 Concen: 10.380 ug/l
 RT: 11.886 min Scan# 11
 Delta R.T. -0.006 min
 Lab File: VN074517.D
 Acq: 16 Sep 2022 18:02

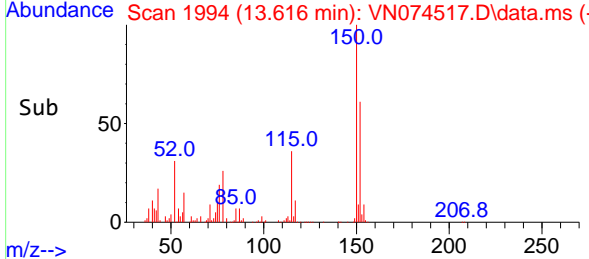
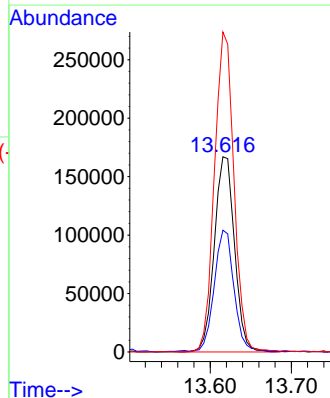
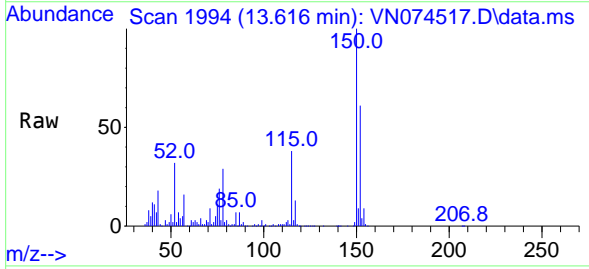
Instrument :
 MSVOA_N
 ClientSampleId :
 AUD-1659DL

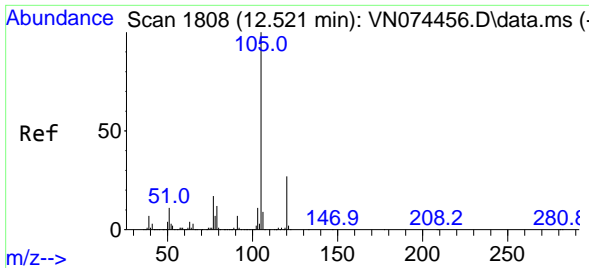
Tgt Ion:106 Resp: 106561
 Ion Ratio Lower Upper
 106 100
 91 205.8 158.9 238.3



#72
 1,4-Dichlorobenzene-d4
 Concen: 50.000 ug/l
 RT: 13.616 min Scan# 1994
 Delta R.T. 0.001 min
 Lab File: VN074517.D
 Acq: 16 Sep 2022 18:02

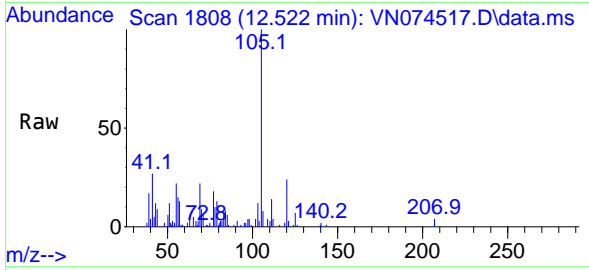
Tgt Ion:152 Resp: 289907
 Ion Ratio Lower Upper
 152 100
 115 61.5 28.9 86.7
 150 158.1 0.0 356.2



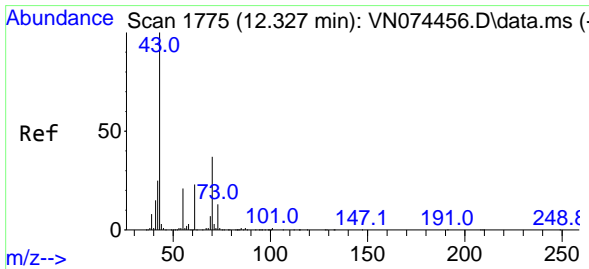
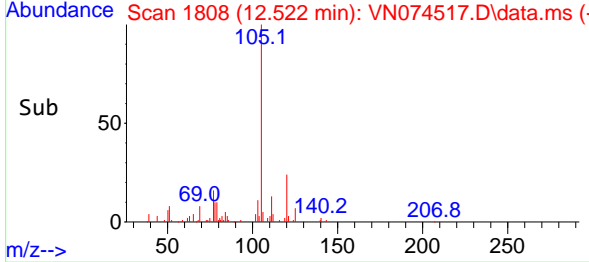
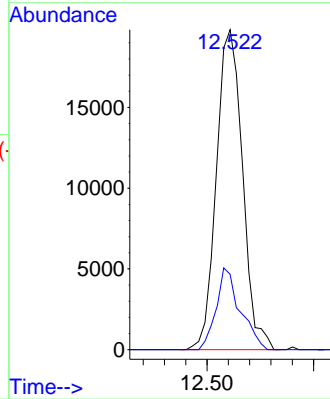


#73
 Isopropylbenzene
 Concen: 1.134 ug/l
 RT: 12.522 min Scan# 1808
 Delta R.T. 0.001 min
 Lab File: VN074517.D
 Acq: 16 Sep 2022 18:02

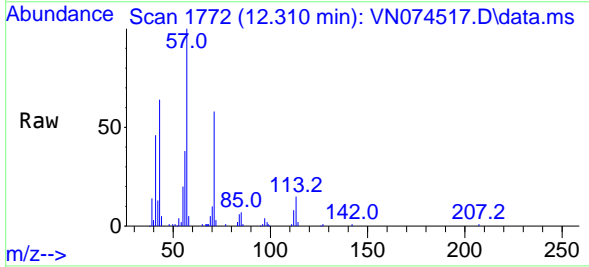
Instrument :
 MSVOA_N
 ClientSampleId :
 AUD-1659DL



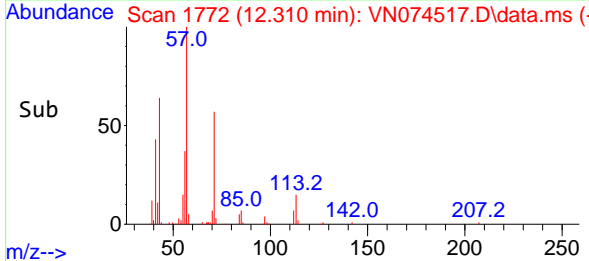
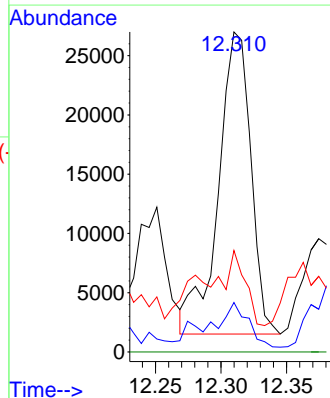
Tgt Ion:105 Resp: 33661
 Ion Ratio Lower Upper
 105 100
 120 23.5 13.5 40.4

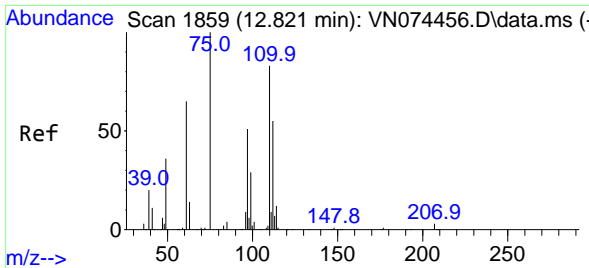


#74
 N-ethyl acetate
 Concen: 2.369 ug/l
 RT: 12.310 min Scan# 1772
 Delta R.T. -0.017 min
 Lab File: VN074517.D
 Acq: 16 Sep 2022 18:02



Tgt Ion: 43 Resp: 43960
 Ion Ratio Lower Upper
 43 100
 70 13.0 39.0 58.4#
 55 11.2 21.1 31.7#
 61 0.0 21.1 31.7#

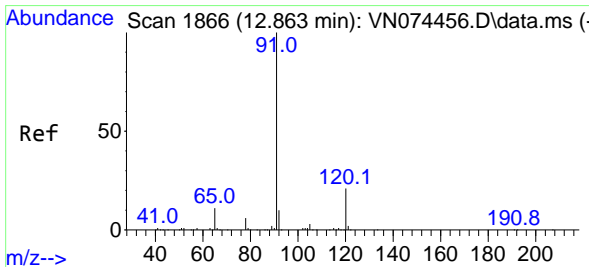
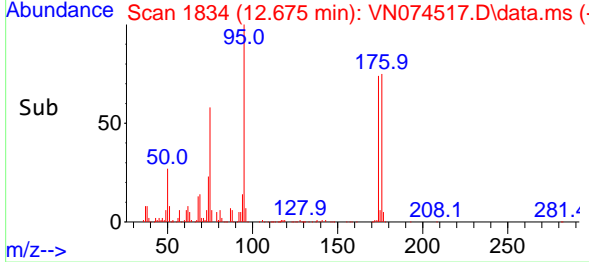
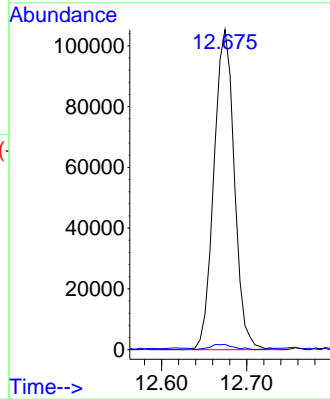
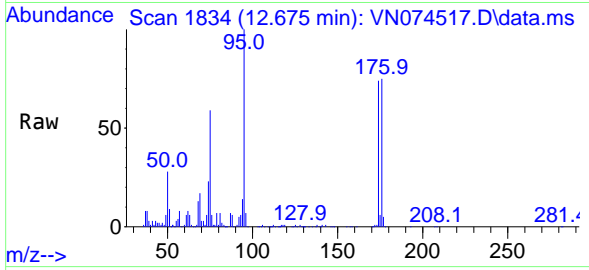




#76
 1,2,3-Trichloropropane
 Concen: 19.652 ug/l
 RT: 12.675 min Scan# 1834
 Delta R.T. -0.146 min
 Lab File: VN074517.D
 Acq: 16 Sep 2022 18:02

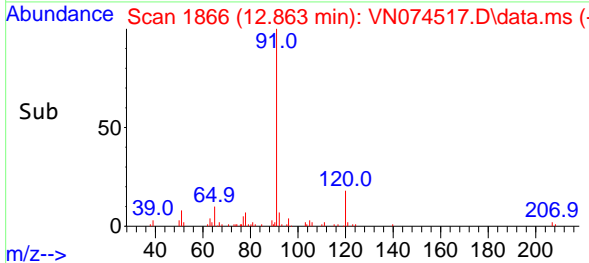
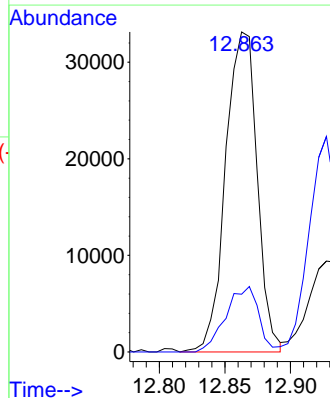
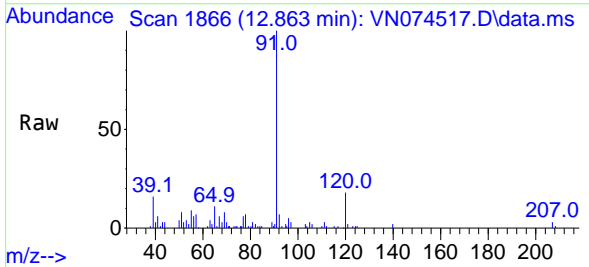
Instrument : MSVOA_N
 ClientSampleId : AUD-1659DL

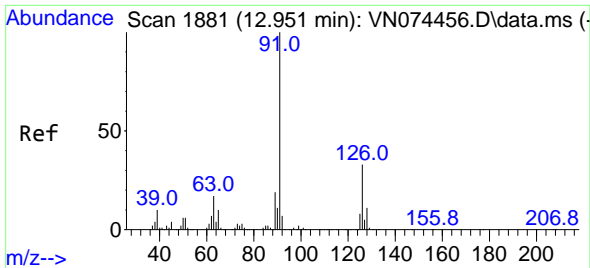
Tgt Ion: 75 Resp: 175365
 Ion Ratio Lower Upper
 75 100
 77 1.9 98.5 295.5#



#78
 n-propylbenzene
 Concen: 1.569 ug/l
 RT: 12.863 min Scan# 1866
 Delta R.T. -0.000 min
 Lab File: VN074517.D
 Acq: 16 Sep 2022 18:02

Tgt Ion: 91 Resp: 55481
 Ion Ratio Lower Upper
 91 100
 120 21.1 11.9 35.5

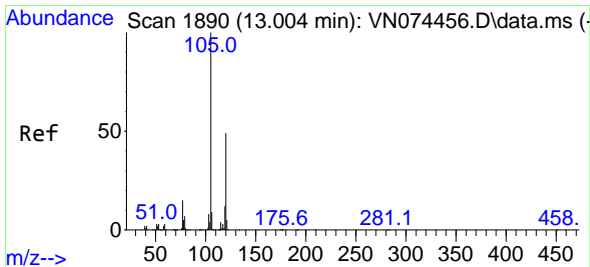
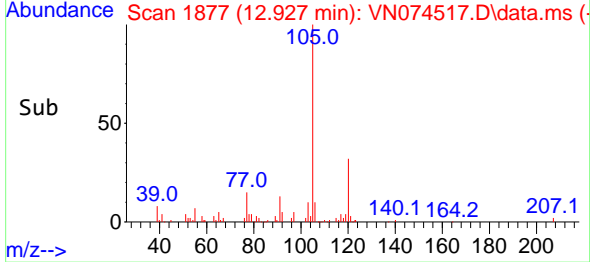
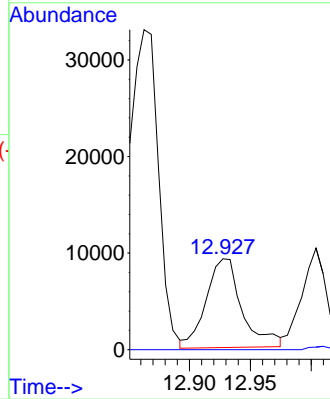
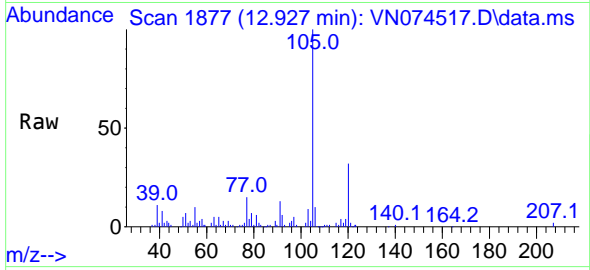




#79
 2-Chlorotoluene
 Concen: 0.892 ug/l
 RT: 12.927 min Scan# 18817
 Delta R.T. -0.024 min
 Lab File: VN074517.D
 Acq: 16 Sep 2022 18:02

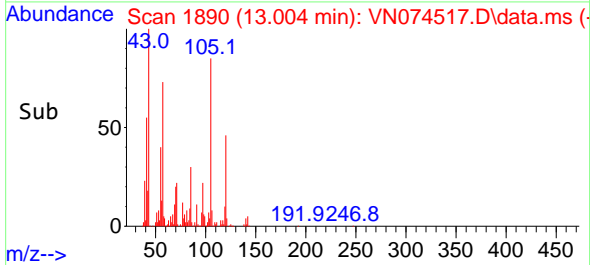
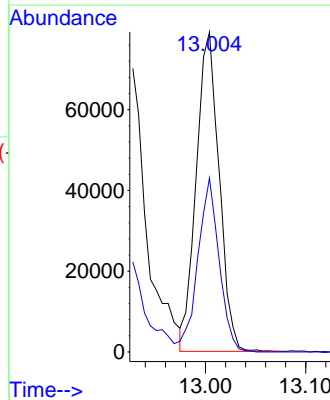
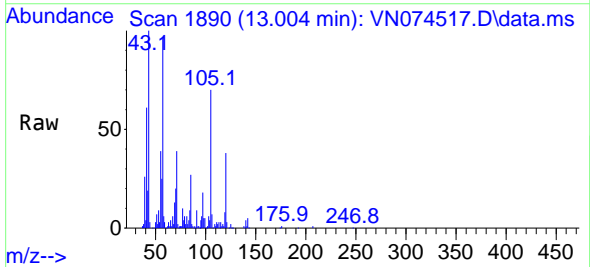
Instrument : MSVOA_N
 ClientSampleId : AUD-1659DL

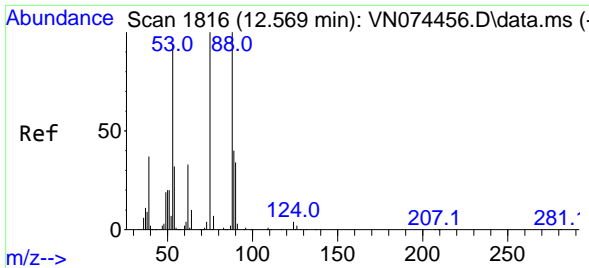
Tgt Ion: 91 Resp: 18817
 Ion Ratio Lower Upper
 91 100
 126 0.0 17.3 51.9#



#80
 1,3,5-Trimethylbenzene
 Concen: 5.176 ug/l
 RT: 13.004 min Scan# 1890
 Delta R.T. -0.000 min
 Lab File: VN074517.D
 Acq: 16 Sep 2022 18:02

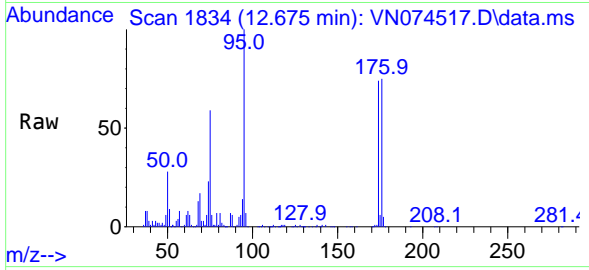
Tgt Ion: 105 Resp: 125242
 Ion Ratio Lower Upper
 105 100
 120 51.1 24.9 74.7



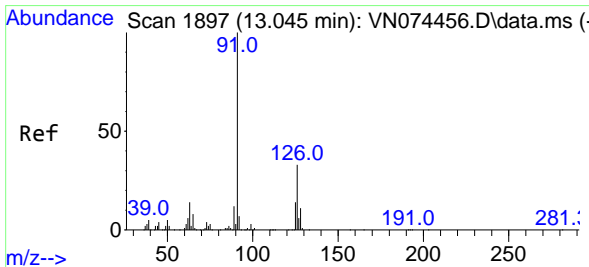
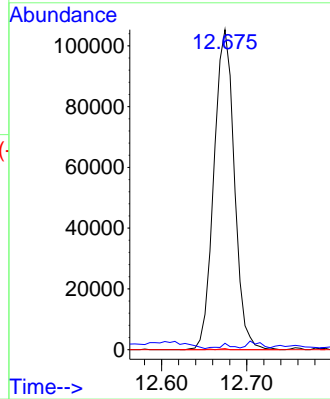
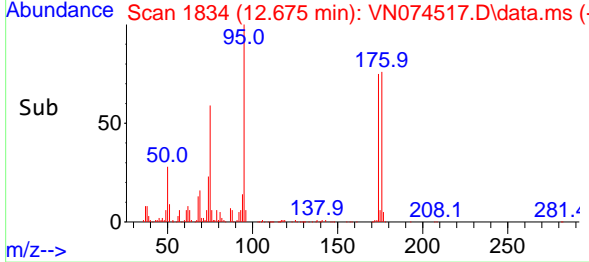


#81
 trans-1,4-Dichloro-2-butene
 Concen: 42.415 ug/l
 RT: 12.675 min Scan# 1834
 Delta R.T. 0.105 min
 Lab File: VN074517.D
 Acq: 16 Sep 2022 18:02

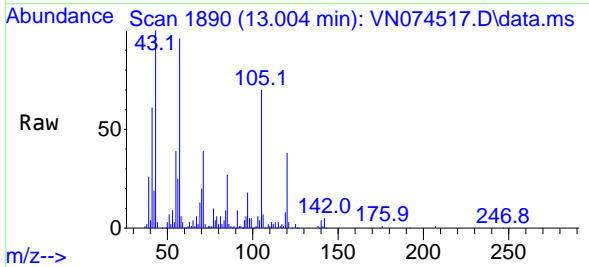
Instrument : MSVOA_N
 ClientSampleId : AUD-1659DL



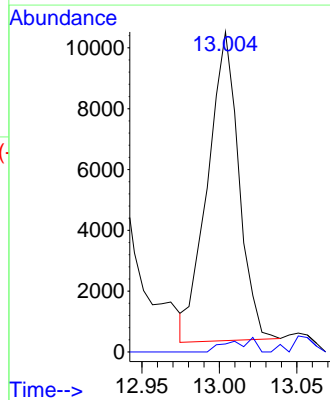
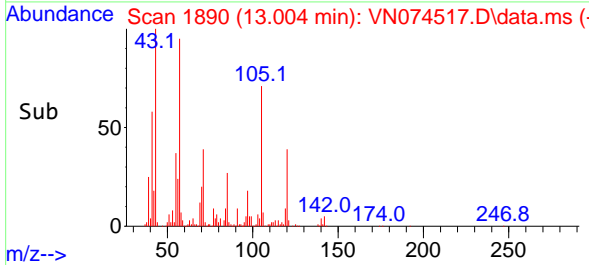
Tgt Ion: 75 Resp: 175365
 Ion Ratio Lower Upper
 75 100
 53 0.9 78.0 117.0#
 89 0.2 37.2 55.8#

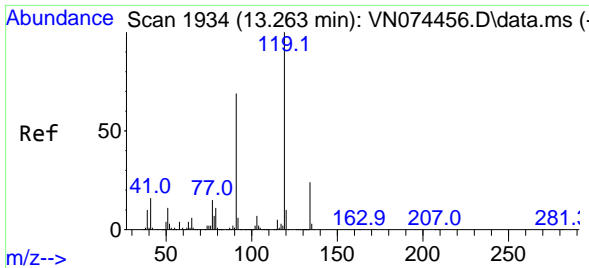


#82
 4-Chlorotoluene
 Concen: 0.705 ug/l
 RT: 13.004 min Scan# 1890
 Delta R.T. -0.041 min
 Lab File: VN074517.D
 Acq: 16 Sep 2022 18:02



Tgt Ion: 91 Resp: 14151
 Ion Ratio Lower Upper
 91 100
 126 3.8 17.2 51.6#



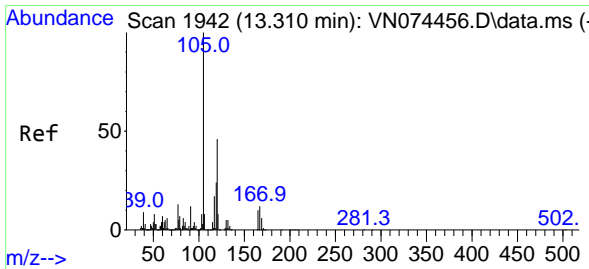
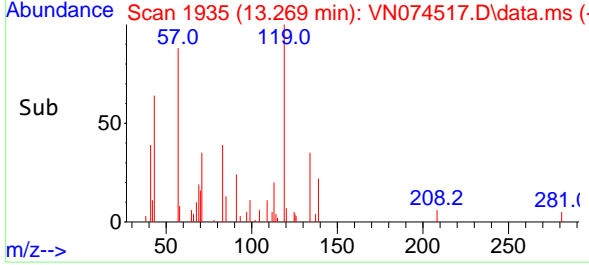
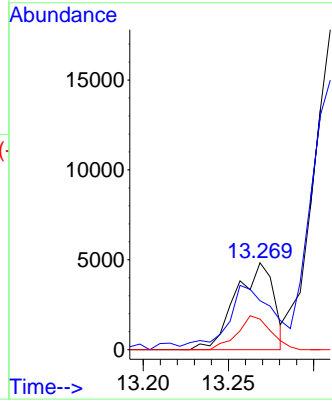
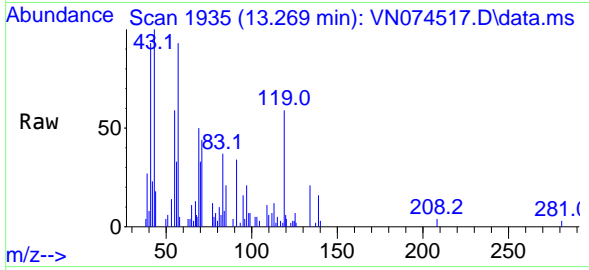


#83
 tert-Butylbenzene
 Concen: 0.341 ug/l
 RT: 13.269 min Scan# 1934
 Delta R.T. 0.006 min
 Lab File: VN074517.D
 Acq: 16 Sep 2022 18:02

Instrument : MSVOA_N
 ClientSampleId : AUD-1659DL

Tgt Ion:119 Resp: 7519

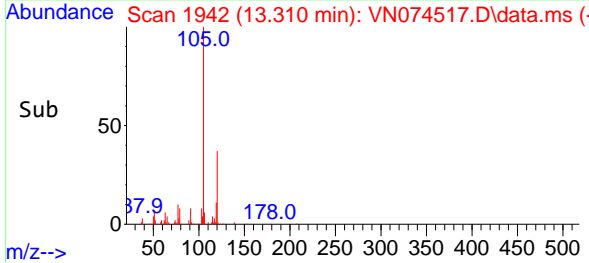
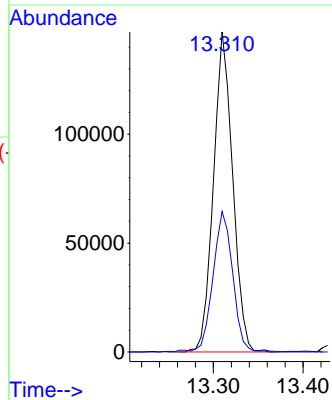
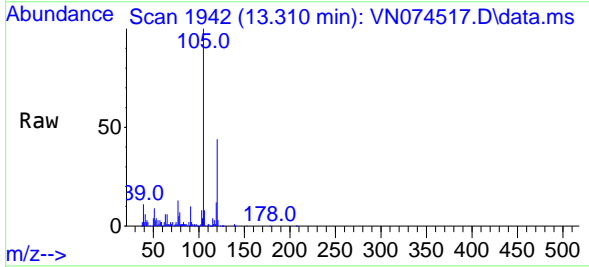
Ion	Ratio	Lower	Upper
119	100		
91	78.9	31.6	94.8
134	33.9	13.7	41.1

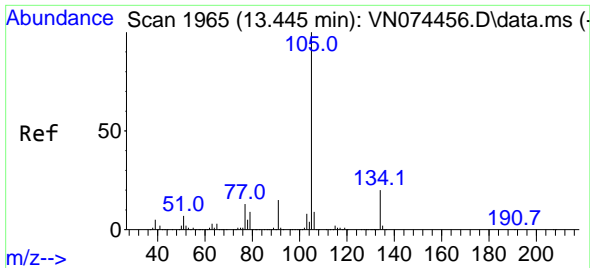


#84
 1,2,4-Trimethylbenzene
 Concen: 8.983 ug/l
 RT: 13.310 min Scan# 1942
 Delta R.T. -0.000 min
 Lab File: VN074517.D
 Acq: 16 Sep 2022 18:02

Tgt Ion:105 Resp: 218755

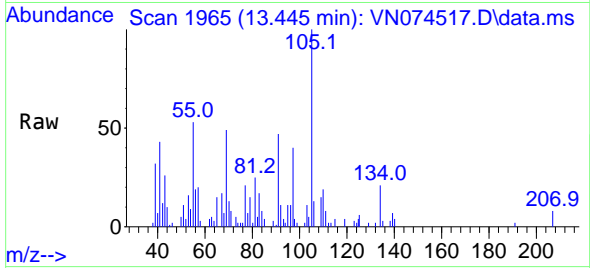
Ion	Ratio	Lower	Upper
105	100		
120	45.1	23.3	69.8



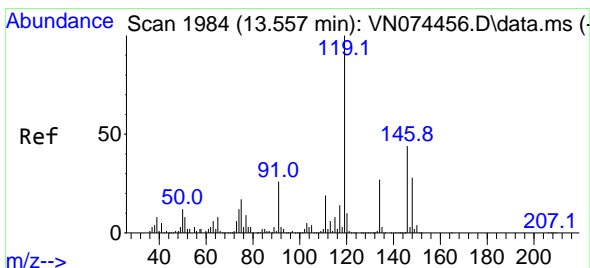
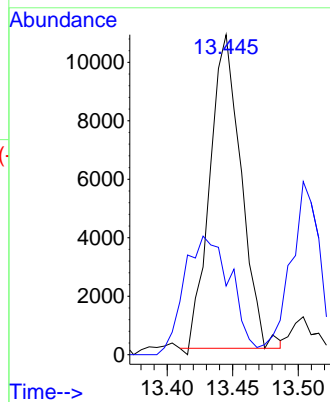
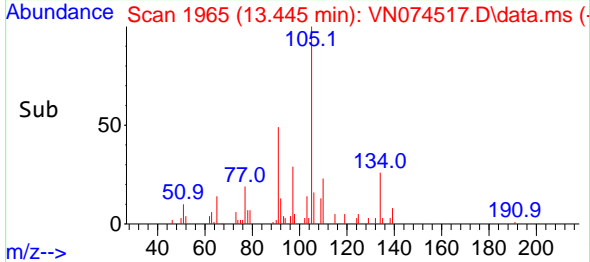


#85
 sec-Butylbenzene
 Concen: 0.587 ug/l
 RT: 13.445 min Scan# 1965
 Delta R.T. 0.000 min
 Lab File: VN074517.D
 Acq: 16 Sep 2022 18:02

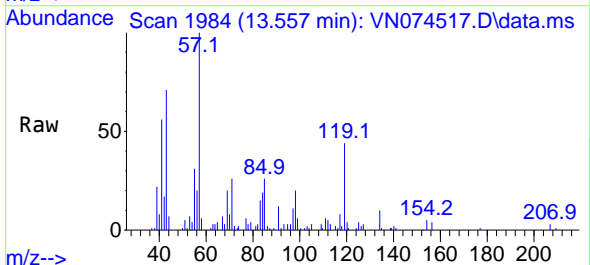
Instrument : MSVOA_N
 ClientSampleId : AUD-1659DL



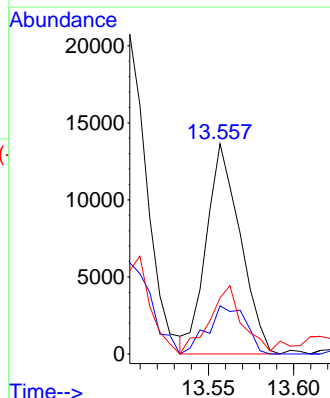
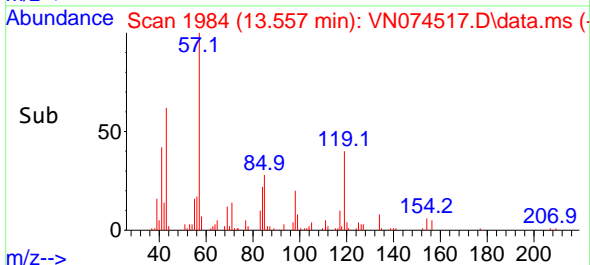
Tgt Ion:105 Resp: 17751
 Ion Ratio Lower Upper
 105 100
 134 56.2 10.4 31.1#

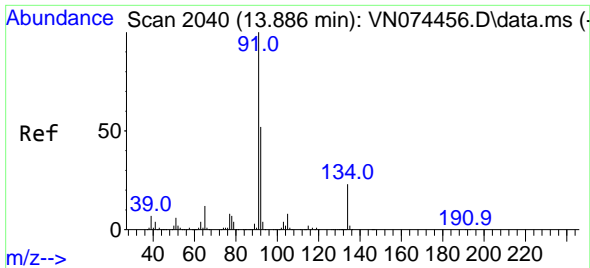


#86
 p-Isopropyltoluene
 Concen: 0.803 ug/l
 RT: 13.557 min Scan# 1984
 Delta R.T. -0.000 min
 Lab File: VN074517.D
 Acq: 16 Sep 2022 18:02



Tgt Ion:119 Resp: 18924
 Ion Ratio Lower Upper
 119 100
 134 25.7 13.3 39.8
 91 31.6 11.3 33.9



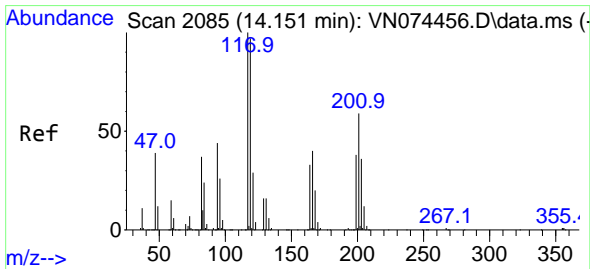
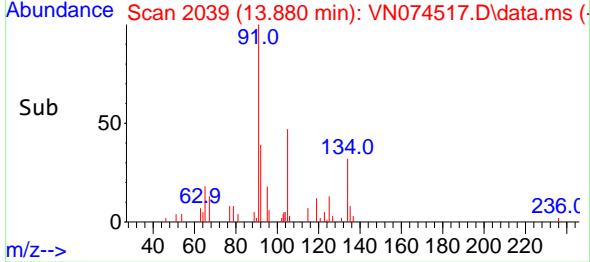
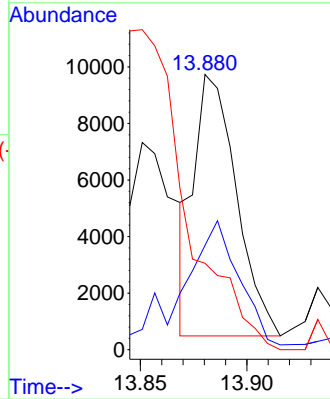
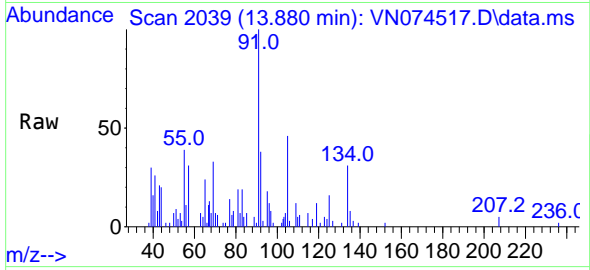


#89
 n-Butylbenzene
 Concen: 0.597 ug/l
 RT: 13.880 min Scan# 2040
 Delta R.T. -0.006 min
 Lab File: VN074517.D
 Acq: 16 Sep 2022 18:02

Instrument : MSVOA_N
 ClientSampleId : AUD-1659DL

Tgt Ion: 91 Resp: 12677

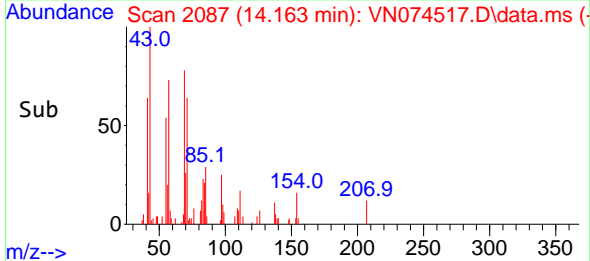
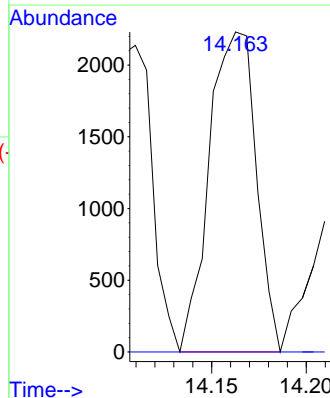
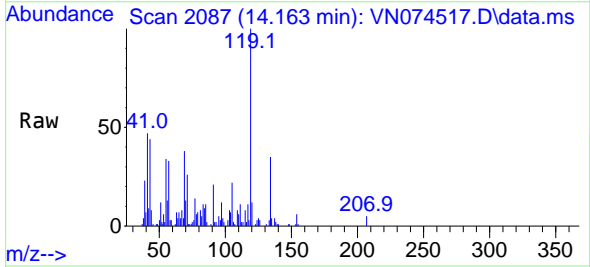
Ion	Ratio	Lower	Upper
91	100		
92	62.8	26.9	80.7
134	0.0	13.6	40.8#

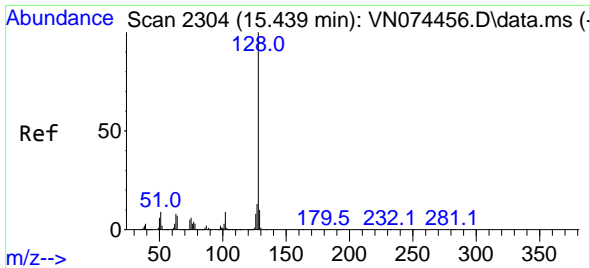


#90
 Hexachloroethane
 Concen: 0.747 ug/l
 RT: 14.163 min Scan# 2087
 Delta R.T. 0.012 min
 Lab File: VN074517.D
 Acq: 16 Sep 2022 18:02

Tgt Ion: 117 Resp: 3834

Ion	Ratio	Lower	Upper
117	100		
201	0.0	40.6	122.0#



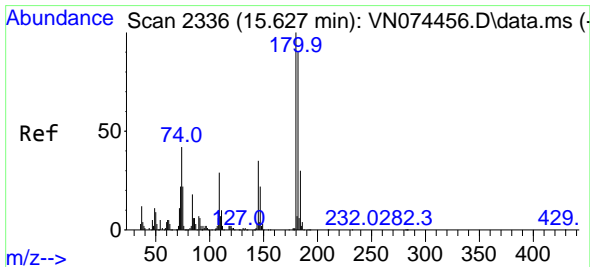
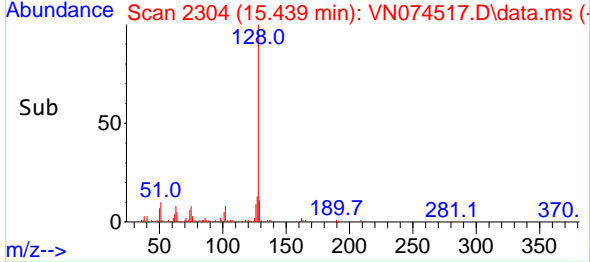
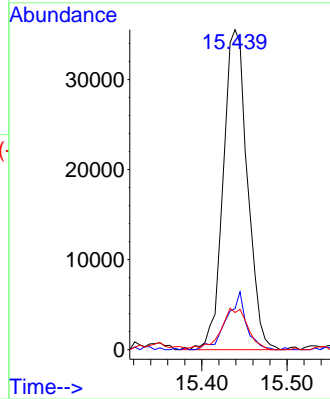
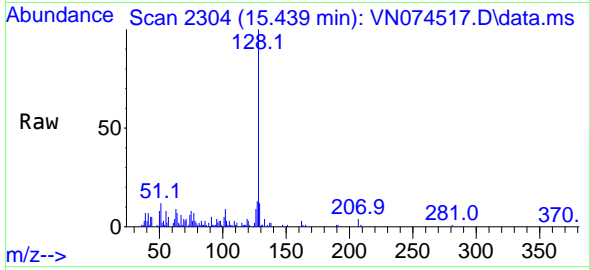


#95
 Naphthalene
 Concen: 4.323 ug/l
 RT: 15.439 min Scan# 21
 Delta R.T. 0.000 min
 Lab File: VN074517.D
 Acq: 16 Sep 2022 18:02

Instrument :
 MSVOA_N
 ClientSampleId :
 AUD-1659DL

Tgt Ion:128 Resp: 70068

Ion	Ratio	Lower	Upper
128	100		
127	14.7	10.3	15.5
129	14.4	8.6	13.0#



#96
 1,2,3-Trichlorobenzene
 Concen: 1.421 ug/l
 RT: 15.592 min Scan# 2330
 Delta R.T. -0.035 min
 Lab File: VN074517.D
 Acq: 16 Sep 2022 18:02

Tgt Ion:180 Resp: 517

Ion	Ratio	Lower	Upper
180	100		
182	73.3	47.8	143.3
145	378.3	15.5	46.5#

